

The term “sight distance triangle” refers to the roadway area visible to the driver. The required length is the distance necessary to allow safe vehicular egress from a street, driveway, or alley to a major street. Mugo Pine or any other landscape plant which requires aggressive maintenance cannot be placed where it will obstruct sight distance. The sight distance triangle is as follows:

- Point A is located on the minor approach 14.4 feet back from the edge of major road travelway with no sidewalk; or 12 feet from edge of back of sidewalk
- Point B<sub>1</sub> is located in the center of lane 1;
- Point B<sub>2</sub> is located in the center of lane 2;
- Point C<sub>1</sub> and C<sub>2</sub> are located based on design speed of the major road and is the distance shown in table 1;
- Point A is connected to points C<sub>1</sub> and C<sub>2</sub> by a straight line.

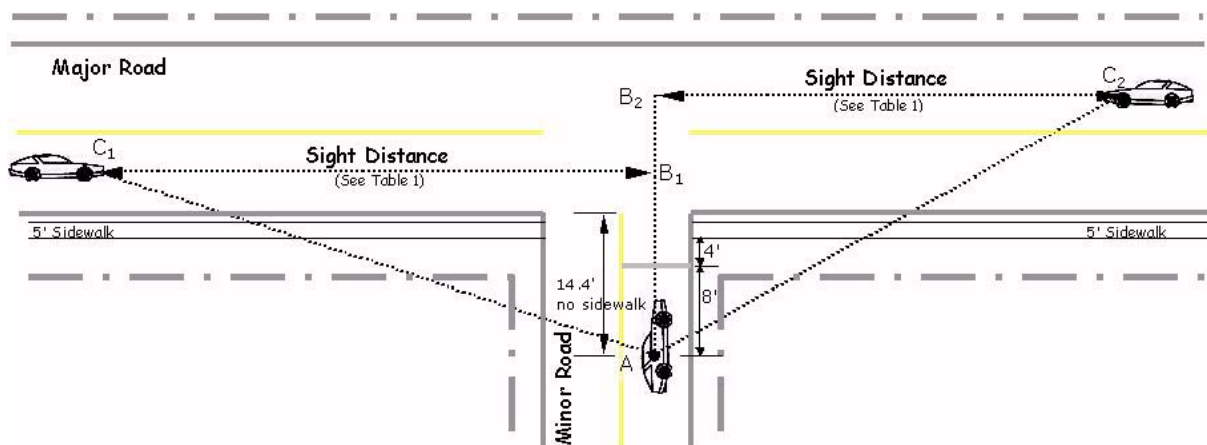


Table 1

| Design Speed | Sight Distance |
|--------------|----------------|
| 65 mph       | 720 ft         |
| 60           | 665            |
| 55           | 610            |
| 50           | 555            |
| 45           | 500            |
| 40           | 445            |
| 35           | 390            |
| 30           | 335            |
| 25           | 280            |
| 20           | 225            |

Note: Measured from height of eye of 3.5' on minor road and height of object of 3.5' on the major road. Trees in the sight triangle are acceptable if trunk is less than 4" in diameter at maturity and branches are trimmed within 2.5' to 8' per AASHTO.