

# Anchorage Students & Schools



**Table of Contents:**

Anchorage School District Elementary School Enrollment, 2006/7-2017/18..... 118

ASD Elementary School Capacity Used, 2011-12 ..... 119

Projected ASD Elementary School Capacity Usage, 2016-17 ..... 120

Student Race/Ethnicity, by Elementary School, ASD, 2011-12..... 121

Non-White Student Population %, ASD Elementary Schools, 2011-12 ..... 122

Standard Based Assessment Levels, Anchorage School District Elementary Schools, 2010-11 ..... 123

% Advanced or Proficient in Reading, ASD Elementary Schools, 2010-11 ..... 124

% Advanced or Proficient in Writing, ASD Elementary Schools, 2010-11 ..... 125

% Advanced or Proficient in Mathematics, ASD Elementary Schools, 2010-11 ..... 126

% Advanced or Proficient in Science, ASD Elementary Schools, 2010-11 ..... 127

Anchorage School District Middle School Enrollment, 2006/7-2017-18..... 128

Student Race/Ethnicity, by Middle School, ASD, 2011-12..... 128

ASD Middle School Capacity Usage, 2011-12 ..... 129

Projected ASD Middle School Capacity Usage, 2016-17..... 130

Non-White Student Population %, ASD Middle Schools, 2011-12..... 131

Standard Based Assessment Levels, Anchorage School District Middle Schools, 2010-11 ..... 132

% Advanced or Proficient in Reading, ASD Middle Schools, 2010-11 ..... 133

% Advanced or Proficient in Writing, ASD Middle Schools, 2010-11 ..... 134

% Advanced or Proficient in Mathematics, ASD Middle Schools, 2010-11 ..... 135

% Advanced or Proficient in Science, ASD Middle Schools, 2010-11 ..... 136

Anchorage School District High School Enrollment, 2006/7-2017-18.....	137
Student Race/Ethnicity, by High School, ASD, 2011-12.....	137
ASD High School Capacity Usage, 2011-12.....	138
Projected ASD High School Capacity Usage, 2016-17.....	139
Non-White Student Population %, ASD High Schools, 2011-12.....	140
Standard Based Assessment Levels, Anchorage School District High Schools, 2010-11.....	141
Dropout & Graduation Rates, Anchorage School District High Schools, 2006/7-2010/11.....	141
% Advanced or Proficient in Reading, ASD High Schools, 2010-11.....	142
% Advanced or Proficient in Writing, ASD High Schools, 2010-11.....	143
% Advanced or Proficient in Mathematics, ASD High Schools, 2010-11.....	144
% Advanced or Proficient in Science, ASD High Schools, 2010-11.....	145
Anchorage School District Alternative & Charter School Enrollment, 2006/7-2017/18.....	146
Student Race/Ethnicity, by Alternate & Charter School, 2011-12.....	146
Standard Based Assessment Levels, ASD Alternative & Charter Schools, 2011-12.....	147
Dropout & Graduation Rates, ASD Alternative & Charter Schools, 2006/7-2010/11.....	147

# Anchorage School District

## Elementary School Enrollment, 2006/7-2017/18

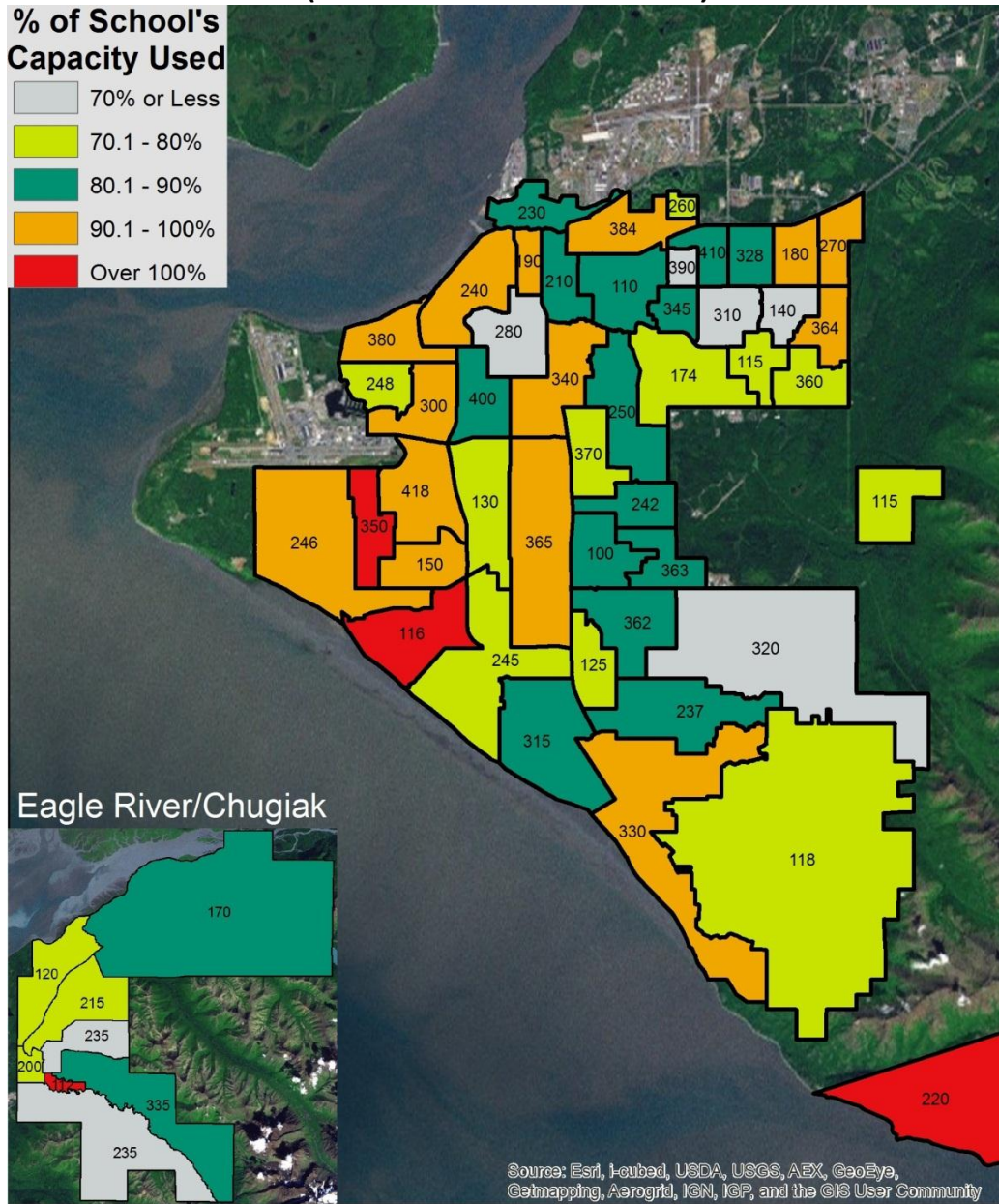
**(Highlighted Numbers Indicate Schools Over Capacity)**

School Name	Student Capacity	Student Enrollment (Historic & Projected)											
		2006-07	2007-08	2008-09	2009-10	2010-11	2011-12	2012-13	2013-14	2014-15	2015-16	2016-17	2017-18
Abbot Loop	442	479	482	447	444	400	371	359	349	350	344	350	353
Airport Heights	338	310	320	320	326	323	304	297	280	288	289	290	295
Alpenglow	537	465	502	549	542	558	548	543	547	557	566	591	597
Aurora	534	371	390	422	394	407	381	388	396	406	412	417	421
Baxter	516	395	370	353	372	377	409	425	434	436	438	453	449
Bayshore	465	561	524	541	519	531	535	532	528	520	525	545	548
Bear Valley	511	455	443	462	433	430	403	399	377	368	369	369	367
Birchwood ABC	407	303	298	283	324	333	323	321	325	341	347	355	360
Bowman	573	448	434	429	440	437	419	416	413	421	428	431	432
Campbell	492	401	397	388	414	391	371	356	354	351	347	358	357
Chester Valley	350	262	222	227	204	202	206	202	213	212	212	215	218
Chinook	534	499	479	496	517	543	525	519	519	548	559	578	603
Chugach Optional	253	257	252	255	257	254	256	251	251	253	252	254	259
Chugiak	534	514	482	472	456	428	443	430	445	452	465	484	479
College Gate	491	352	411	389	397	392	392	408	406	418	429	435	441
Creekside Park	439	394	345	359	380	382	430	442	447	471	474	478	466
Denali Montessori	493	355	385	370	404	403	427	426	427	435	440	446	445
Eagle River	492	341	326	340	368	342	357	363	371	375	369	375	380
Fairview	507	384	358	404	426	465	408	401	404	421	437	445	454
Fire Lake	453	294	304	342	366	346	344	338	354	358	363	374	371
Girdwood K-8	169	145	153	164	161	163	185	194	205	222	238	252	263
Gladys Wood	446	510	451	433	453	439	414	401	394	391	398	401	397
Government Hill	534	464	428	428	470	491	479	480	477	491	504	514	522
Homestead	501	362	329	327	320	314	324	306	306	310	306	304	308
Huffman	461	368	364	369	368	379	376	384	389	406	412	422	416
Inlet View	235	201	192	201	224	226	230	247	258	273	273	282	285
Kasun	512	467	460	457	446	420	455	442	453	450	445	440	453
Kincaid	514	517	464	477	473	507	514	524	543	561	552	549	562
Klatt	505	371	338	343	355	350	365	378	398	404	405	412	423
Lake Hood	489	421	429	407	383	386	360	353	348	342	339	343	345
Lake Otis	464	380	431	418	430	403	413	416	424	438	448	460	468
Mount Spurr	330	295	261	309	301	358	290	279	282	277	278	271	269
Mountain View	436	361	348	393	368	299	343	341	337	355	346	349	357
Muldoon	451	405	417	419	446	454	408	381	367	367	369	376	383
North Star	526	407	434	411	424	390	364	401	392	405	399	402	407
Northern Lights ABC	560	641	629	607	624	617	629	626	636	630	611	600	594
Northwood ABC	376	268	268	301	354	340	361	369	389	404	413	419	425
Nunaka Valley	340	262	252	237	232	235	232	241	250	254	266	259	263
Ocean View	512	512	472	429	424	425	443	456	479	505	518	527	539
O'Malley	485	312	297	308	331	305	303	298	308	327	326	336	347
Orion	492	375	387	406	433	435	419	422	426	431	434	440	447
Ptarmigan	484	420	459	476	423	432	425	409	395	400	390	395	404
Rabbit Creek	415	367	383	415	422	420	399	396	392	400	413	418	427
Ravenwood	469	435	410	381	398	417	416	414	416	435	444	436	431
Rogers Park	537	586	540	524	492	508	526	517	504	533	544	554	550
Russian Jack	452	373	360	381	348	356	362	349	340	344	360	362	363
Sand Lake	675	644	658	671	661	704	684	674	677	670	676	678	703
Scenic Park	514	427	379	359	374	394	402	404	413	423	428	435	441
Spring Hill	438	363	324	324	337	341	358	371	381	393	404	411	418
Susitna	484	569	448	459	461	466	471	469	475	504	508	527	531
Taku	404	444	423	408	391	392	382	382	380	386	387	398	393
Trailside	534	476	478	482	491	476	469	463	454	445	443	451	464
Tudor	466	585	404	358	371	356	344	346	351	350	347	363	366
Turnagain	465	366	384	393	443	458	465	449	464	462	475	486	497
William Tyson	505	415	415	457	487	502	488	493	518	543	572	580	588
Ursa Major	538	371	348	363	452	442	427	439	441	452	464	473	477
Ursa Minor	327	286	283	246	279	311	302	316	320	330	338	338	345
Williwaw	508	367	346	373	359	355	347	349	372	382	389	388	393
Willow Crest	501	399	380	376	379	423	407	396	404	421	427	435	443
Wonder Park	406	377	357	324	279	303	336	352	359	370	381	384	369

Source: Anchorage School District

# ASD Elementary School Capacity Used, 2011-12

(School Boundaries Are Shown)



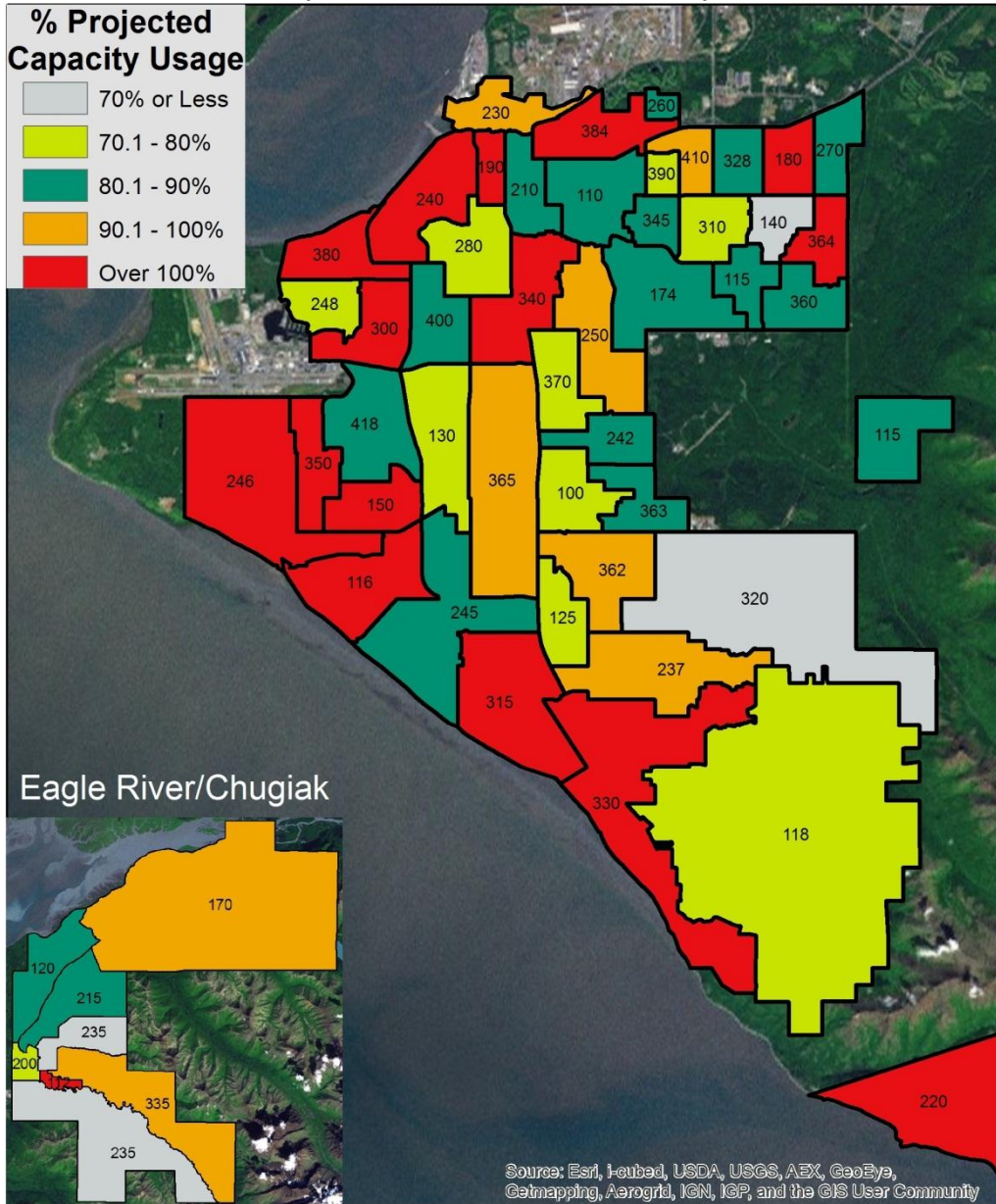
### School Code Guide

100	Abbot Loop	180	Creekside Park	245	Klatt	340	Rogers Park	410	Wonder Park
110	Airport Heights	190	Denali Montessori	248	Lake Hood	345	Russian Jack	Schools Not Shown	
112	Alpenglow	200	Eagle River	250	Lake Otis	350	Sand Lake	Aurora	71%
115	Baxter	210	Fairview	260	Mountain View	360	Scenic Park	Chugach Optional	101%
116	Bayshore	215	Fire Lake	270	Muldoon	362	Spring Hill	Mt. Spurr	88%
118	Bear Valley	220	Girdwood K-8	280	North Star	364	Susitna	Northern Lights ABC	112%
120	Birchwood ABC	418	Gladys Wood	300	Northwood ABC	365	Taku	Orion	85%
125	Bowman	230	Government Hill	310	Nunaka Valley	363	Trailside	Ursa Major	79%
130	Campbell	235	Homestead	315	Ocean View	370	Tudor	Ursa Minor	92%
140	Chester Valley	237	Huffman	320	O'Malley	380	Turnagain		
150	Chinook	240	Inlet View	328	Ptarmigan	384	William Tyson		
170	Chugiak	242	Kasuun	330	Rabbit Creek	390	Williwaw		
174	College Gate	246	Kincaid	335	Ravenwood	400	Willow Crest		

Source: Anchorage School District

# Projected ASD Elementary School Capacity Usage, 2016-17

(School Boundaries Are Shown)



### School Code Guide

100 Abbot Loop	180 Creekside Park	248 Lake Hood	345 Russian Jack	418 Gladys Wood
110 Airport Heights	190 Denali Montessori	250 Lake Otis	350 Sand Lake	
112 Alpenglow	200 Eagle River	260 Mountain View	360 Scenic Park	Schools Not Shown
115 Baxter	210 Fairview	270 Muldoon	362 Spring Hill	Aurora 78%
116 Bayshore	215 Fire Lake	280 North Star	363 Trailside	Chugach Optional 100%
118 Bear Valley	220 Girdwood K-8	300 Northwood ABC	364 Susitna	Mt. Spurr 82%
120 Birchwood ABC	230 Government Hill	310 Nunaka Valley	365 Taku	Northern Lights ABC 107%
125 Bowman	235 Homestead	315 Ocean View	370 Tudor	Orion 89%
130 Campbell	237 Huffman	320 O'Malley	380 Turnagain	Ursa Major 88%
140 Chester Valley	240 Inlet View	328 Ptarmigan	384 William Tyson	Ursa Minor 103%
150 Chinook	242 Kasuun	330 Rabbit Creek	390 Williwaw	
170 Chugiak	245 Klatt	335 Ravenwood	400 Willow Crest	
174 College Gate	246 Kincaid	340 Rogers Park	410 Wonder Park	

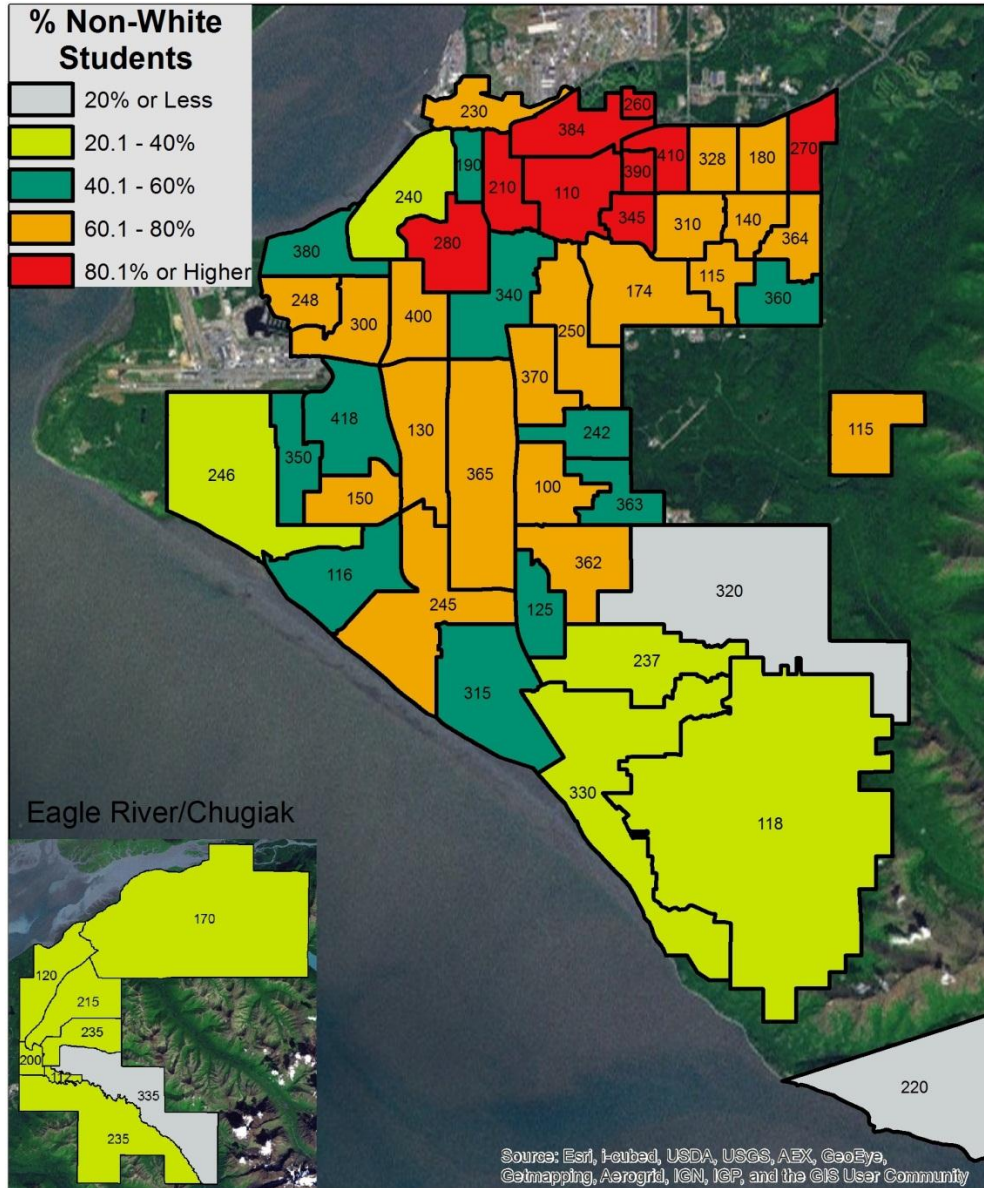
Source: Anchorage School District

## Student Race/Ethnicity, by Elementary School, Anchorage School District, 2011-12

School Name	White	African American or Black	AK Native or American	Asian or Pacific Islander	2 or More Races	Hispanic/ Latino	Total Nonwhite
Abbot Loop	22%	5%	12%	23%	25%	13%	78%
Airport Heights	12%	8%	18%	29%	18%	15%	88%
Alpenglow	72%	4%	2%	2%	8%	11%	28%
Aurora	72%	9%	0%	2%	5%	11%	28%
Baxter	36%	8%	10%	10%	25%	10%	64%
Bayshore	50%	2%	5%	17%	15%	9%	50%
Bear Valley	75%	1%	3%	5%	12%	4%	25%
Birchwood ABC	78%	2%	5%	1%	7%	7%	22%
Bowman	57%	2%	7%	9%	16%	8%	43%
Campbell	35%	3%	10%	18%	20%	14%	65%
Chester Valley	34%	5%	9%	19%	23%	10%	66%
Chinook	31%	4%	17%	22%	16%	10%	69%
Chugach Optional	80%	1%	2%	3%	9%	5%	20%
Chugiak	73%	1%	5%	2%	10%	9%	27%
College Gate	27%	9%	14%	19%	20%	12%	73%
Creekside Park	21%	13%	6%	27%	19%	13%	79%
Denali Montessori	53%	7%	10%	10%	12%	8%	47%
Eagle River	61%	1%	8%	4%	15%	11%	39%
Fairview	9%	28%	10%	32%	11%	9%	91%
Fire Lake	60%	1%	6%	9%	16%	7%	40%
Girdwood K-8	87%	0%	2%	3%	4%	4%	13%
Gladys Wood	41%	6%	11%	16%	17%	11%	59%
Government Hill	21%	4%	4%	13%	9%	49%	79%
Homestead	73%	2%	5%	2%	12%	6%	27%
Huffman	73%	2%	7%	6%	8%	6%	27%
Inlet View	62%	3%	6%	6%	12%	11%	38%
Kasuun	47%	4%	10%	11%	15%	13%	53%
Kincaid	62%	1%	8%	8%	15%	5%	38%
Klatt	32%	1%	10%	24%	14%	20%	68%
Lake Hood	30%	3%	10%	27%	17%	13%	70%
Lake Otis	23%	8%	21%	23%	14%	12%	77%
Mount Spurr	69%	7%	0%	3%	12%	9%	31%
Mountain View	8%	15%	15%	34%	15%	13%	92%
Muldoon	17%	10%	13%	38%	16%	6%	83%
North Star	19%	10%	13%	30%	13%	16%	81%
Northern Lights ABC	46%	3%	3%	24%	16%	8%	54%
Northwood ABC	33%	5%	14%	22%	16%	10%	67%
Nunaka Valley	27%	11%	16%	11%	26%	9%	73%
Ocean View	55%	3%	12%	6%	16%	7%	45%
O'Malley	82%	0%	4%	2%	8%	4%	18%
Orion	64%	9%	0%	3%	7%	15%	36%
Ptarmigan	23%	11%	16%	19%	17%	13%	77%
Rabbit Creek	67%	1%	10%	3%	11%	9%	34%
Ravenwood	80%	0%	3%	3%	6%	7%	20%
Rogers Park	48%	4%	7%	16%	19%	7%	52%
Russian Jack	17%	7%	14%	28%	18%	16%	83%
Sand Lake	49%	2%	8%	16%	18%	7%	51%
Scenic Park	43%	12%	5%	13%	19%	9%	57%
Spring Hill	32%	4%	11%	19%	17%	16%	68%
Susitna	37%	10%	8%	17%	19%	8%	63%
Taku	25%	8%	13%	23%	22%	10%	75%
Trailside	53%	4%	9%	9%	17%	8%	47%
Tudor	31%	5%	12%	14%	18%	19%	69%
Turnagain	56%	4%	9%	10%	17%	4%	44%
William Tyson	8%	14%	11%	40%	16%	11%	92%
Ursa Major	52%	21%	3%	3%	7%	15%	48%
Ursa Minor	54%	19%	1%	4%	6%	15%	46%
Williwaw	9%	11%	9%	47%	16%	8%	91%
Willow Crest	22%	4%	18%	24%	16%	16%	78%
Wonder Park	17%	13%	14%	20%	20%	16%	83%

Source: Anchorage School District

## Non-White Student Population %, ASD Elementary Schools, 2011-12 School Year (School Boundaries Are Shown)



### School Code Guide

100 Abbot Loop	180 Creekside Park	248 Lake Hood	345 Russian Jack	418 Gladys Wood
110 Airport Heights	190 Denali Montessori	250 Lake Otis	350 Sand Lake	
112 Alpenglow	200 Eagle River	260 Mountain View	360 Scenic Park	Schools Not Shown
115 Baxter	210 Fairview	270 Muldoon	362 Spring Hill	Aurora 28%
116 Bayshore	215 Fire Lake	280 North Star	363 Trailside	Chugach Optional 20%
118 Bear Valley	220 Girdwood K-8	300 Northwood ABC	364 Susitna	Mt. Spurr 31%
120 Birchwood ABC	230 Government Hill	310 Nunaka Valley	365 Taku	Northern Lights ABC 54%
125 Bowman	235 Homestead	315 Ocean View	370 Tudor	Orion 36%
130 Campbell	237 Huffman	320 O'Malley	380 Turnagain	Ursa Major 48%
140 Chester Valley	240 Inlet View	328 Ptarmigan	384 William Tyson	Ursa Minor 46%
150 Chinook	242 Kasuun	330 Rabbit Creek	390 Williwaw	
170 Chugiak	245 Klatt	335 Ravenwood	400 Willow Crest	
174 College Gate	246 Kincaid	340 Rogers Park	410 Wonder Park	

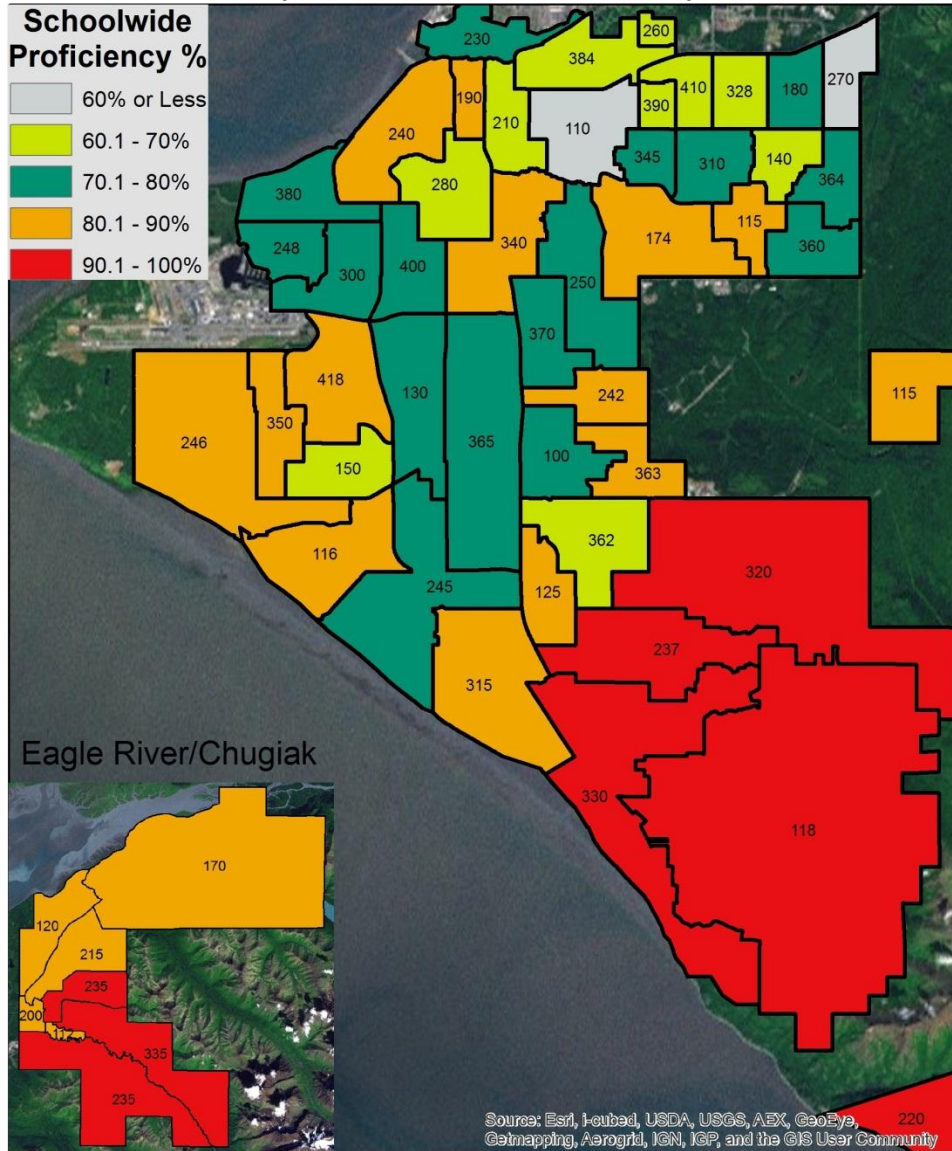
Source: Anchorage School District

# Standard Based Assessment Levels, Anchorage School District Elementary Schools, All Grades, All Students, 2010-11

School Name	Reading, Proficient or Advanced	Reading, Below or Far Below Proficient	Writing, Proficient or Advanced	Writing, Below or Far Below Proficient	Mathmatics, Proficient or Advanced	Mathmatics, Below or Far Below Proficient	Science, Proficient or Advanced	Science, Below or Far Below Proficient	% of Core Academic Classes Taught by Highly Qualified Teachers
Abbot Loop	78.34%	21.66%	75.12%	24.88%	73.85%	26.15%	41.82%	58.19%	100.00%
Airport Heights	56.65%	43.35%	48.56%	51.44%	45.93%	54.07%	11.66%	88.33%	88.00%
Alpenglow	89.25%	10.75%	89.86%	10.15%	84.47%	15.53%	64.28%	35.71%	100.00%
Aurora	90.59%	9.41%	91.09%	8.92%	92.57%	7.43%	76.47%	23.53%	100.00%
Baxter	85.29%	14.70%	84.31%	15.69%	85.30%	14.70%	57.14%	42.86%	100.00%
Baysshore	87.82%	12.18%	87.82%	12.18%	86.90%	13.10%	65.06%	34.94%	93.75%
Bear Valley	91.97%	8.03%	93.75%	6.25%	91.11%	8.89%	75.37%	24.63%	100.00%
Birchwood ABC	88.42%	11.58%	88.42%	11.58%	91.47%	8.53%	77.20%	22.80%	100.00%
Bowman	80.51%	19.49%	79.48%	20.52%	76.92%	23.08%	53.12%	46.88%	86.05%
Campbell	76.97%	23.03%	76.03%	23.97%	76.96%	23.04%	40.38%	59.62%	100.00%
Chester Valley	65.34%	34.66%	57.85%	42.15%	57.84%	42.16%	44.74%	55.26%	95.24%
Chinook	69.05%	30.95%	66.33%	33.67%	62.03%	37.97%	40.25%	59.75%	97.73%
Chugach Optional	100.00%	0.00%	95.10%	4.90%	90.91%	9.09%	82.05%	17.95%	100.00%
Chugiak	86.73%	13.27%	82.46%	17.54%	82.47%	17.53%	62.96%	37.04%	85.00%
College Gate	83.42%	16.58%	79.91%	20.09%	70.95%	29.05%	56.67%	43.33%	89.80%
Creekside Park	73.66%	26.34%	73.12%	26.88%	72.83%	27.17%	39.70%	60.30%	85.71%
Denali Montessori	85.92%	14.08%	83.56%	16.44%	76.52%	23.48%	53.57%	46.43%	96.15%
Eagle River	88.54%	11.46%	87.50%	12.50%	75.91%	24.09%	56.52%	43.48%	86.67%
Fairview	60.47%	39.53%	57.54%	42.46%	52.55%	47.45%	17.81%	82.19%	100.00%
Fire Lake	84.70%	15.30%	81.76%	18.24%	81.77%	18.23%	68.26%	31.74%	100.00%
Girdwood K-8	94.06%	5.94%	95.05%	4.95%	93.13%	6.87%	90.91%	9.09%	100.00%
Gladys Wood	82.23%	17.77%	81.81%	18.19%	73.14%	26.86%	52.63%	47.37%	100.00%
Government Hill	77.55%	22.45%	76.77%	23.23%	68.37%	31.63%	37.50%	62.50%	100.00%
Homestead	91.51%	8.49%	92.17%	7.83%	90.96%	9.04%	73.33%	26.67%	100.00%
Huffman	90.69%	9.31%	87.91%	12.09%	88.38%	11.62%	81.81%	18.19%	100.00%
Inlet View	80.36%	19.64%	81.25%	18.75%	78.57%	21.43%	56.25%	43.75%	85.19%
Kasuun	83.60%	16.40%	82.80%	17.20%	76.90%	23.10%	42.59%	57.41%	95.74%
Kincaid	88.19%	11.81%	88.85%	11.15%	87.81%	12.19%	59.70%	40.30%	95.74%
Klatt	79.10%	20.90%	80.10%	19.90%	76.24%	23.76%	60.98%	39.02%	89.47%
Lake Hood	76.72%	23.28%	79.22%	20.78%	75.96%	24.04%	60.78%	39.22%	95.12%
Lake Otis	77.12%	22.88%	77.50%	22.50%	73.13%	26.87%	26.67%	73.33%	100.00%
Mount Spurr	88.10%	11.90%	89.68%	10.32%	91.27%	8.73%	59.37%	40.63%	100.00%
Mountain View	65.03%	34.97%	60.00%	40.00%	60.00%	40.00%	18.86%	81.14%	81.82%
Muldoon	55.12%	44.88%	59.19%	40.81%	51.33%	48.67%	12.34%	87.66%	100.00%
North Star	68.75%	31.25%	63.02%	36.98%	58.76%	41.24%	36.20%	63.80%	98.44%
Northern Lights ABC	95.84%	4.16%	95.84%	4.16%	95.36%	4.64%	79.66%	20.34%	94.64%
Northwood ABC	70.69%	29.31%	76.30%	23.70%	73.14%	26.86%	37.78%	62.22%	90.70%
Nunaka Valley	79.21%	20.79%	66.34%	33.66%	61.77%	38.23%	38.71%	61.29%	71.43%
Ocean View	84.94%	15.06%	83.33%	16.67%	79.17%	20.83%	58.63%	41.37%	90.48%
O'Malley	90.56%	9.44%	85.56%	14.44%	84.44%	15.56%	76.31%	23.69%	88.24%
Orion	87.56%	12.44%	80.29%	19.71%	83.17%	16.83%	67.86%	32.14%	90.24%
Ptarmigan	65.32%	34.68%	62.63%	37.37%	61.81%	38.19%	27.28%	72.72%	100.00%
Rabbit Creek	91.30%	8.70%	88.23%	11.77%	85.49%	14.51%	68.11%	31.89%	90.48%
Ravenwood	93.28%	6.72%	94.54%	5.46%	91.98%	8.02%	68.12%	31.88%	90.91%
Rogers Park	84.30%	15.70%	78.85%	21.15%	79.23%	20.77%	64.77%	35.23%	93.88%
Russian Jack	76.97%	23.03%	75.52%	24.48%	74.47%	25.53%	41.94%	58.06%	81.63%
Sand Lake	84.87%	15.13%	83.12%	16.88%	80.80%	19.20%	56.67%	43.33%	100.00%
Scenic Park	76.47%	23.53%	79.14%	20.86%	70.43%	29.57%	42.10%	57.90%	100.00%
Spring Hill	67.75%	32.25%	66.67%	33.33%	58.51%	41.49%	28.58%	71.42%	100.00%
Susitna	74.02%	25.98%	70.56%	29.44%	73.16%	26.84%	43.06%	56.94%	100.00%
Taku	73.36%	26.64%	70.35%	29.65%	70.20%	29.80%	36.00%	64.00%	95.12%
Trailside	85.17%	14.83%	88.93%	11.07%	84.38%	15.62%	43.42%	56.58%	100.00%
Tudor	79.08%	20.92%	74.49%	25.51%	67.00%	33.00%	52.63%	47.37%	100.00%
Turnagain	76.51%	23.49%	76.13%	23.87%	76.14%	23.86%	45.16%	54.84%	100.00%
William Tyson	64.83%	35.17%	64.83%	35.17%	60.85%	39.15%	29.27%	70.73%	94.34%
Ursa Major	84.11%	15.89%	82.71%	17.29%	78.97%	21.03%	64.40%	35.60%	91.49%
Ursa Minor	78.29%	21.71%	75.66%	24.34%	71.33%	28.67%	58.53%	41.47%	100.00%
Williwaw	62.86%	37.14%	71.43%	28.57%	70.88%	29.12%	13.80%	86.20%	95.45%
Willow Crest	70.29%	29.71%	59.41%	40.59%	57.20%	42.80%	23.64%	76.36%	100.00%
Wonder Park	61.80%	38.20%	65.74%	34.26%	66.43%	33.57%	29.63%	70.37%	94.12%

Source: State of Alaska, Department of Education & Early Development

## % Advanced or Proficient in Reading, 2010-2011 Standards Based Assessment, ASD Elementary Schools (School Boundaries Are Shown)

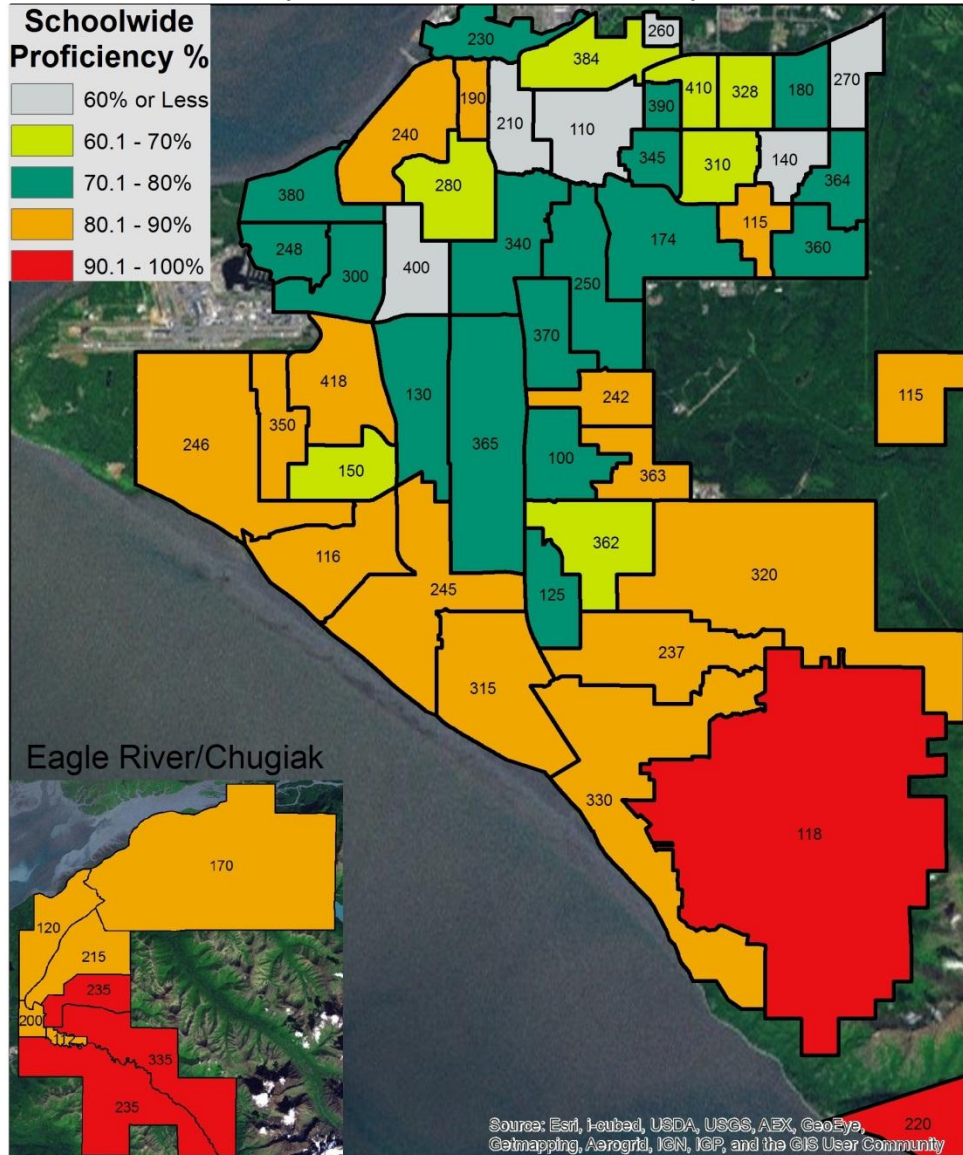


**School Code Guide**

100	Abbot Loop	180	Creekside Park	248	Lake Hood	345	Russian Jack	418	Gladys Wood
110	Airport Heights	190	Denali Montessori	250	Lake Otis	350	Sand Lake		
112	Alpenglow	200	Eagle River	260	Mountain View	360	Scenic Park	Schools Not Shown	
115	Baxter	210	Fairview	270	Muldoon	362	Spring Hill	Aurora	90.59%
116	Bayshore	215	Fire Lake	280	North Star	363	Trailside	Chugach Optional	100%
118	Bear Valley	220	Girdwood K-8	300	Northwood ABC	364	Susitna	Mt. Spurr	88.10%
120	Birchwood ABC	230	Government Hill	310	Nunaka Valley	365	Taku	Northern Lights ABC	95.84%
125	Bowman	235	Homestead	315	Ocean View	370	Tudor	Orion	87.56%
130	Campbell	237	Huffman	320	O'Malley	380	Turnagain	Ursa Major	84.11%
140	Chester Valley	240	Inlet View	328	Ptarmigan	384	William Tyson	Ursa Minor	78.29%
150	Chinook	242	Kasuun	330	Rabbit Creek	390	Williwaw		
170	Chugiak	245	Klatt	335	Ravenwood	400	Willow Crest		
174	College Gate	246	Kincaid	340	Rogers Park	410	Wonder Park		

Source: State of Alaska, Department of Education & Early Development

## % Advanced or Proficient in Writing, 2010-2011 Standards Based Assessment, ASD Elementary Schools (School Boundaries Are Shown)

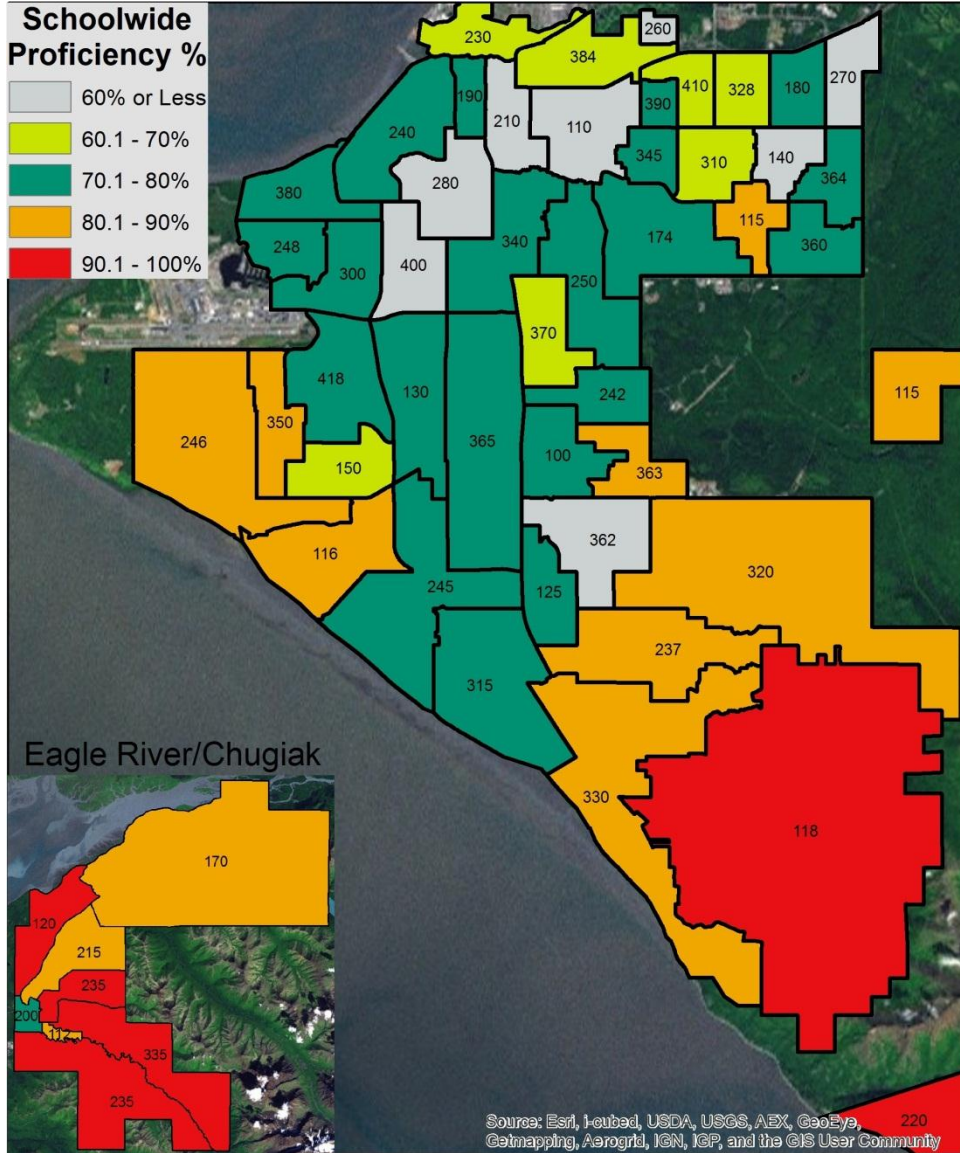


**School Code Guide**

100	Abbot Loop	180	Creekside Park	248	Lake Hood	345	Russian Jack	418	Gladys Wood
110	Airport Heights	190	Denali Montessori	250	Lake Otis	350	Sand Lake		
112	Alpenglow	200	Eagle River	260	Mountain View	360	Scenic Park	Schools Not Shown	
115	Baxter	210	Fairview	270	Muldoon	362	Spring Hill	Aurora	90.59%
116	Bayshore	215	Fire Lake	280	North Star	363	Trailside	Chugach Optional	100%
118	Bear Valley	220	Girdwood K-8	300	Northwood ABC	364	Susitna	Mt. Spurr	88.10%
120	Birchwood ABC	230	Government Hill	310	Nunaka Valley	365	Taku	Northern Lights ABC	95.84%
125	Bowman	235	Homestead	315	Ocean View	370	Tudor	Orion	87.56%
130	Campbell	237	Huffman	320	O'Malley	380	Turnagain	Ursa Major	84.11%
140	Chester Valley	240	Inlet View	328	Ptarmigan	384	William Tyson	Ursa Minor	78.29%
150	Chinook	242	Kasuun	330	Rabbit Creek	390	Williwaw		
170	Chugiak	245	Klatt	335	Ravenwood	400	Willow Crest		
174	College Gate	246	Kincaid	340	Rogers Park	410	Wonder Park		

Source: State of Alaska, Department of Education & Early Development

## % Advanced or Proficient in Mathematics, 2010-2011 Standards Based Assessment, ASD Elementary Schools (School Boundaries Are Shown)

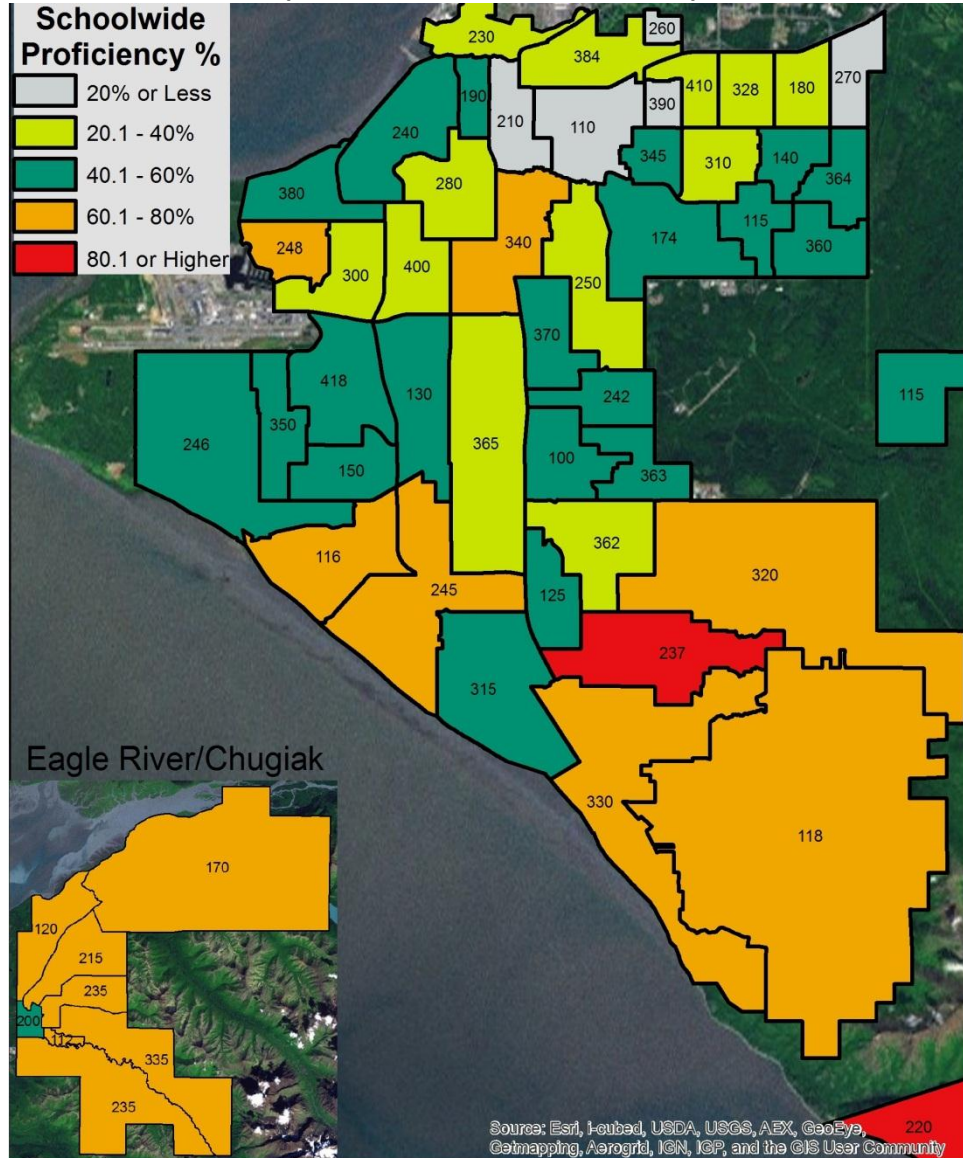


**School Code Guide**

100	Abbot Loop	180	Creekside Park	248	Lake Hood	345	Russian Jack	418	Gladys Wood
110	Airport Heights	190	Denali Montessori	250	Lake Otis	350	Sand Lake		
112	Alpenglow	200	Eagle River	260	Mountain View	360	Scenic Park	Schools Not Shown	
115	Baxter	210	Fairview	270	Muldoon	362	Spring Hill	Aurora	90.59%
116	Bayshore	215	Fire Lake	280	North Star	363	Trailside	Chugach Optional	100%
118	Bear Valley	220	Girdwood K-8	300	Northwood ABC	364	Susitna	Mt. Spurr	88.10%
120	Birchwood ABC	230	Government Hill	310	Nunaka Valley	365	Taku	Northern Lights ABC	95.84%
125	Bowman	235	Homestead	315	Ocean View	370	Tudor	Orion	87.56%
130	Campbell	237	Huffman	320	O'Malley	380	Turnagain	Ursa Major	84.11%
140	Chester Valley	240	Inlet View	328	Ptarmigan	384	William Tyson	Ursa Minor	78.29%
150	Chinook	242	Kasuun	330	Rabbit Creek	390	Williwaw		
170	Chugiak	245	Klatt	335	Ravenwood	400	Willow Crest		
174	College Gate	246	Kincaid	340	Rogers Park	410	Wonder Park		

Source: State of Alaska, Department of Education & Early Development

## % Advanced or Proficient in Science, 2010-2011 Standards Based Assessment, ASD Elementary Schools (School Boundaries Are Shown)



**School Code Guide**

100	Abbot Loop	180	Creekside Park	248	Lake Hood	345	Russian Jack	418	Gladys Wood
110	Airport Heights	190	Denali Montessori	250	Lake Otis	350	Sand Lake		
112	Alpenglow	200	Eagle River	260	Mountain View	360	Scenic Park	Schools Not Shown	
115	Baxter	210	Fairview	270	Muldoon	362	Spring Hill	Aurora	90.59%
116	Bayshore	215	Fire Lake	280	North Star	363	Trailside	Chugach Optional	100%
118	Bear Valley	220	Girdwood K-8	300	Northwood ABC	364	Susitna	Mt. Spurr	88.10%
120	Birchwood ABC	230	Government Hill	310	Nunaka Valley	365	Taku	Northern Lights ABC	95.84%
125	Bowman	235	Homestead	315	Ocean View	370	Tudor	Orion	87.56%
130	Campbell	237	Huffman	320	O'Malley	380	Turnagain	Ursa Major	84.11%
140	Chester Valley	240	Inlet View	328	Ptarmigan	384	William Tyson	Ursa Minor	78.29%
150	Chinook	242	Kasuun	330	Rabbit Creek	390	Williwaw		
170	Chugiak	245	Klatt	335	Ravenwood	400	Willow Crest		
174	College Gate	246	Kincaid	340	Rogers Park	410	Wonder Park		

Source: State of Alaska, Department of Education & Early Development

## Anchorage School District Middle School Enrollment, 2006/7-2017/18 (Highlighted Numbers Indicate Schools Over Capacity)

Student Enrollment, Historic & Projected

School Name	Student Capacity	Student Enrollment, Historic & Projected											
		2006-07	2007-08	2008-09	2009-10	2010-11	2011-2012	2012-13	2013-14	2014-15	2015-16	2016-17	2017-18
Begich	1058	0	1184	1186	996	999	1000	1018	1004	995	988	1002	1027
Central	610	531	645	682	583	587	586	585	588	583	572	577	590
Clark	1058	803	0	0	1032	1094	1133	1160	1142	1131	1121	1138	1168
Girdwood K-8	169	145	153	164	161	163	185	194	205	222	238	252	263
Goldenview	885	889	808	756	768	797	794	797	801	794	779	785	801
Gruening	655	605	595	613	598	569	565	577	576	571	560	564	576
Hanshew	783	907	819	781	791	757	769	779	774	768	754	759	775
Mears	757	1050	922	867	842	803	831	842	835	830	814	819	836
Mirror Lake	915	699	672	665	660	657	678	682	641	651	644	654	671
Romig	828	796	836	793	700	732	758	754	746	740	725	731	747
Wendler	728	837	769	724	566	536	526	519	525	522	512	516	527

Source: Anchorage School District

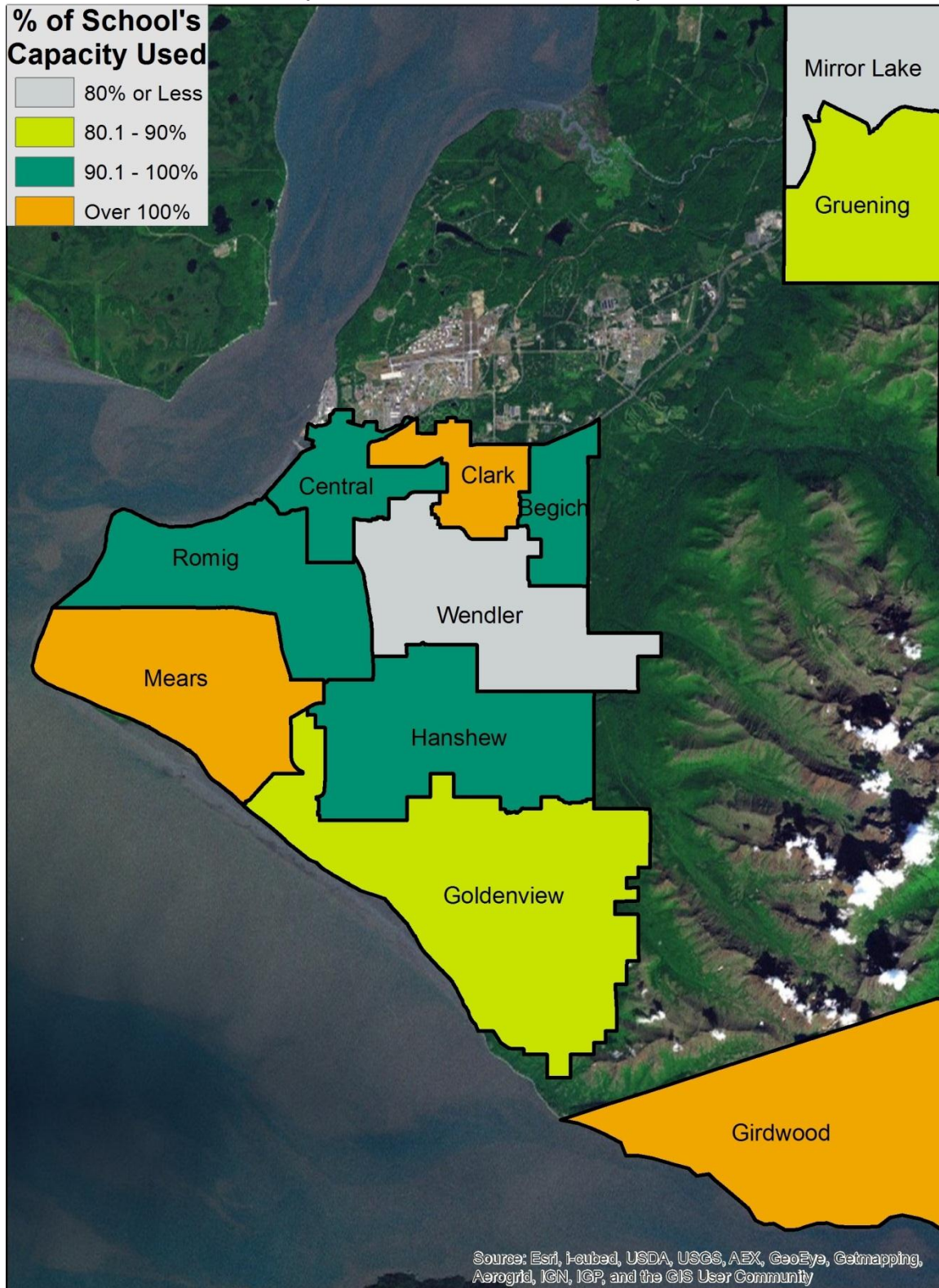
## Student Race/Ethnicity, by Middle School, Anchorage School District, 2011-12

School Name	White	African American	AK Native or	Asian or Pacific	2 or More	Hispanic/	Total
		or Black	American Indian	Islander	Races	Latino	
Begich	29%	10%	12%	22%	16%	11%	71%
Central	43%	9%	8%	20%	9%	12%	57%
Clark	11%	14%	14%	34%	15%	12%	89%
Girdwood K-8	87%	0%	2%	3%	4%	4%	13%
Goldenview	69%	1%	5%	6%	9%	9%	31%
Gruening	65%	10%	4%	2%	7%	12%	35%
Hanshew	43%	5%	10%	15%	15%	13%	57%
Mears	48%	4%	9%	15%	15%	8%	52%
Mirror Lake	73%	2%	5%	4%	9%	7%	27%
Romig	37%	4%	12%	18%	13%	16%	63%
Wendler	29%	7%	14%	20%	16%	14%	71%

Source: Anchorage School District

# ASD Middle School Capacity Used, 2011-12

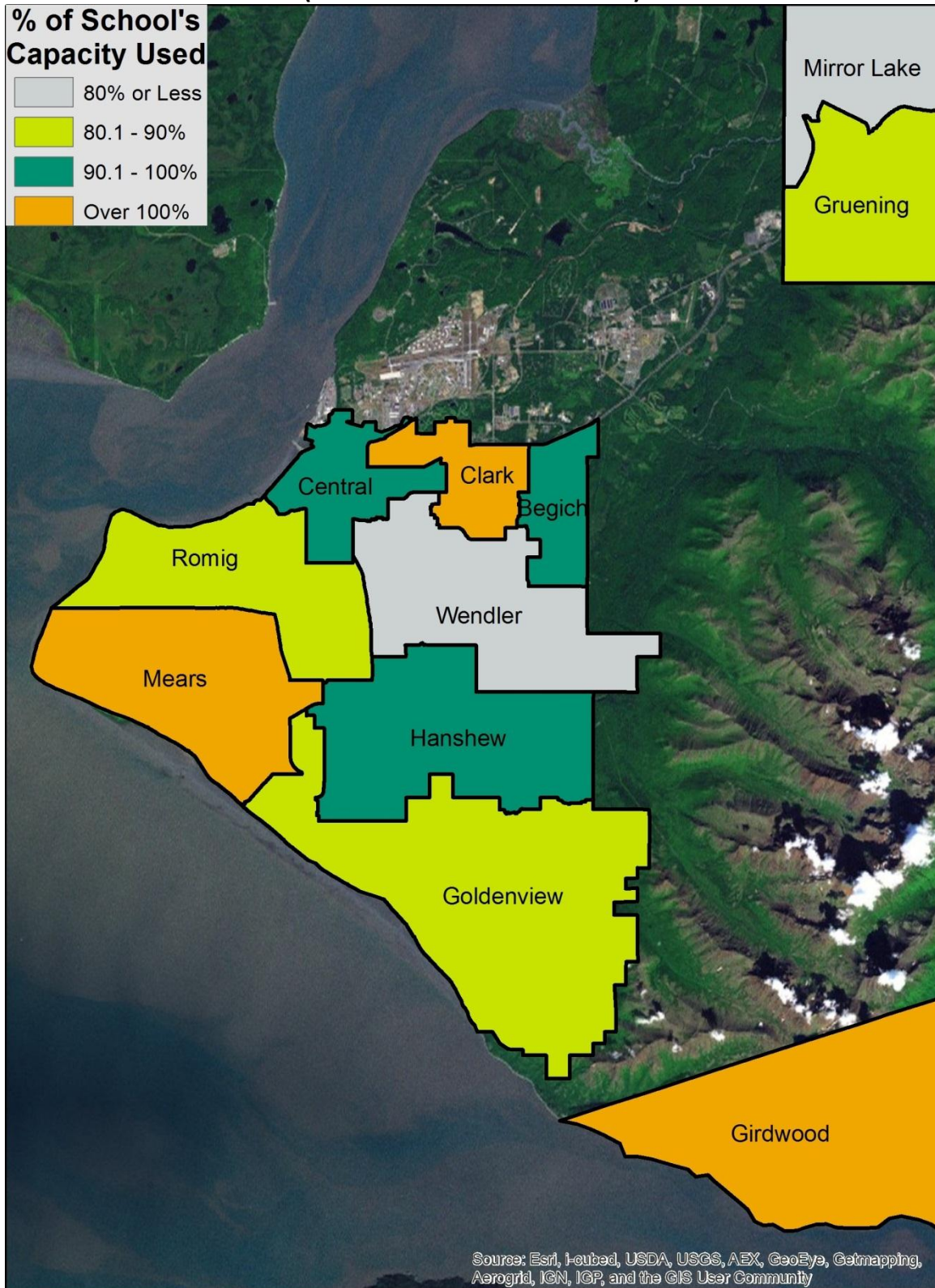
(School Boundaries Are Shown)



Source: Anchorage School District

# Projected ASD Middle School Capacity Usage, 2016-17

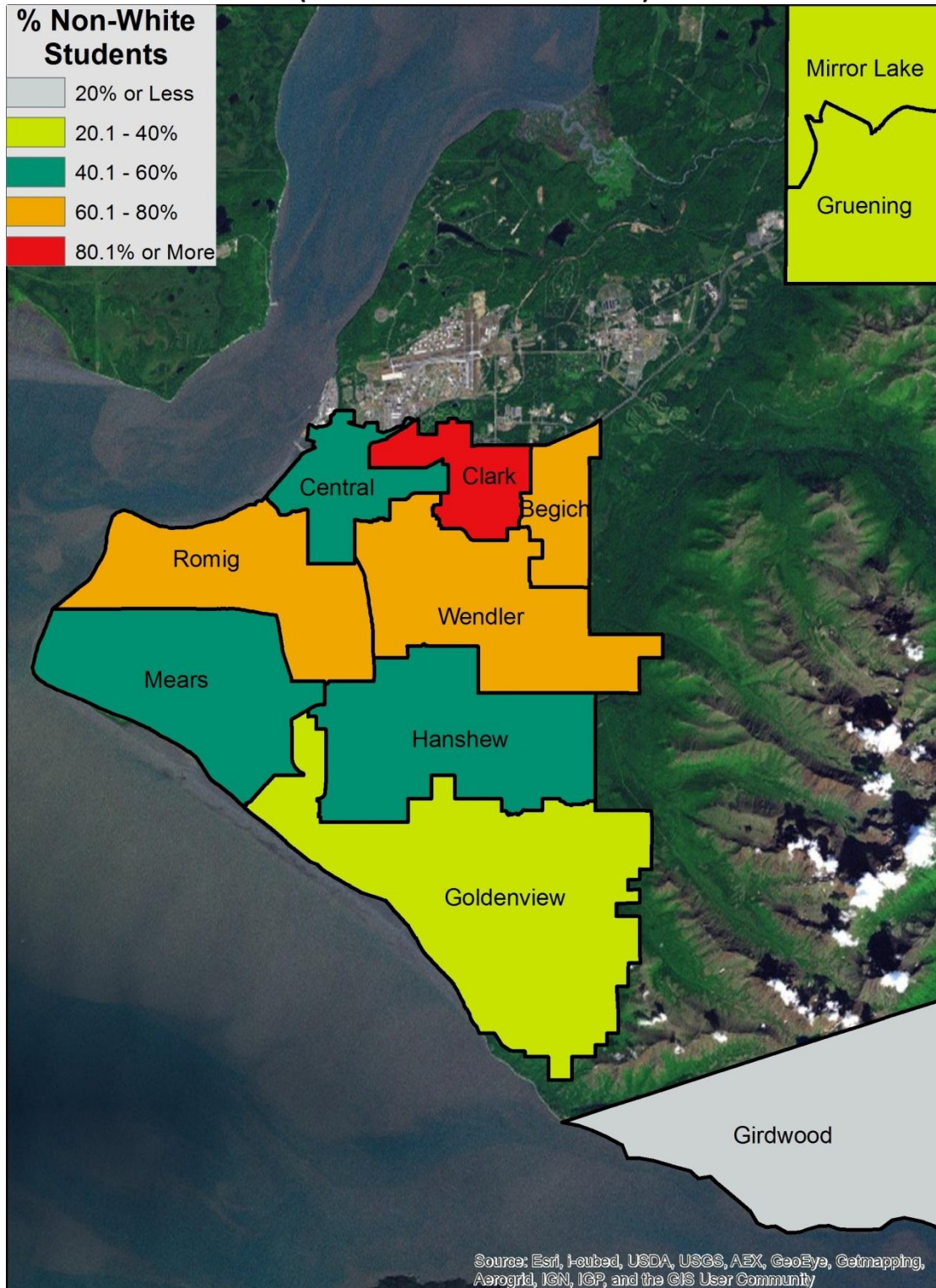
(School Boundaries Are Shown)



Source: Anchorage School District

# Non-White Student Population %, ASD Middle Schools, 2011-12 School Year

(School Boundaries Are Shown)



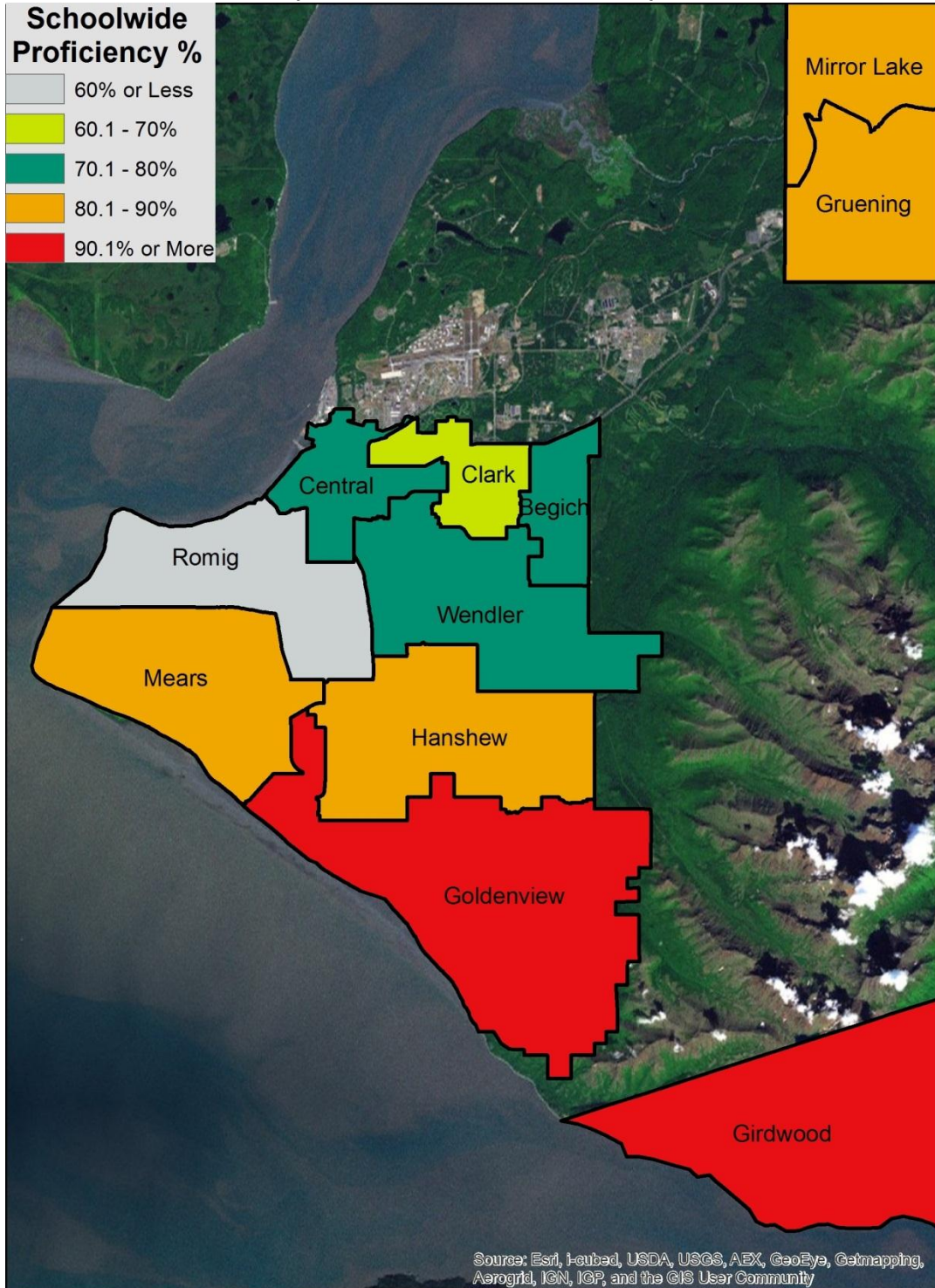
Source: Anchorage School District

## Standard Based Assessment Levels, Anchorage School District Middle Schools, All Grades, All Students, 2010-11

School Name	Reading,		Writing,		Mathmatics,		Science,	
	Reading, Proficient or Advanced	Below or Far Below Proficient	Writing, Proficient or Advanced	Below or Far Below Proficient	Mathmatics, Proficient or Advanced	Below or Far Below Proficient	Science, Proficient or Advanced	Below or Far Below Proficient
Begich	71.51%	28.49%	66.80%	33.20%	56.99%	43.01%	45.25%	54.75%
Central	78.56%	21.44%	72.05%	27.95%	63.65%	36.35%	59.84%	40.16%
Clark	64.91%	35.09%	59.17%	40.83%	53.18%	46.82%	29.76%	70.24%
Girdwood K-8	94.06%	5.94%	95.05%	4.95%	93.13%	6.87%	90.91%	9.09%
Goldenview	90.59%	9.41%	86.71%	13.29%	83.68%	16.32%	83.51%	16.49%
Gruening	87.81%	12.19%	82.02%	17.98%	75.77%	24.23%	71.33%	28.67%
Hanshew	81.16%	18.84%	75.96%	24.04%	69.00%	31.00%	58.56%	41.44%
Mears	83.42%	16.58%	79.47%	20.53%	69.77%	30.23%	59.41%	40.59%
Mirror Lake	85.06%	14.94%	82.26%	17.74%	77.61%	22.39%	77.88%	22.12%
Romig	54.24%	45.76%	75.95%	24.05%	65.94%	34.06%	60.16%	39.84%
Wendler	76.47%	23.53%	69.61%	30.39%	60.67%	39.33%	46.99%	53.01%

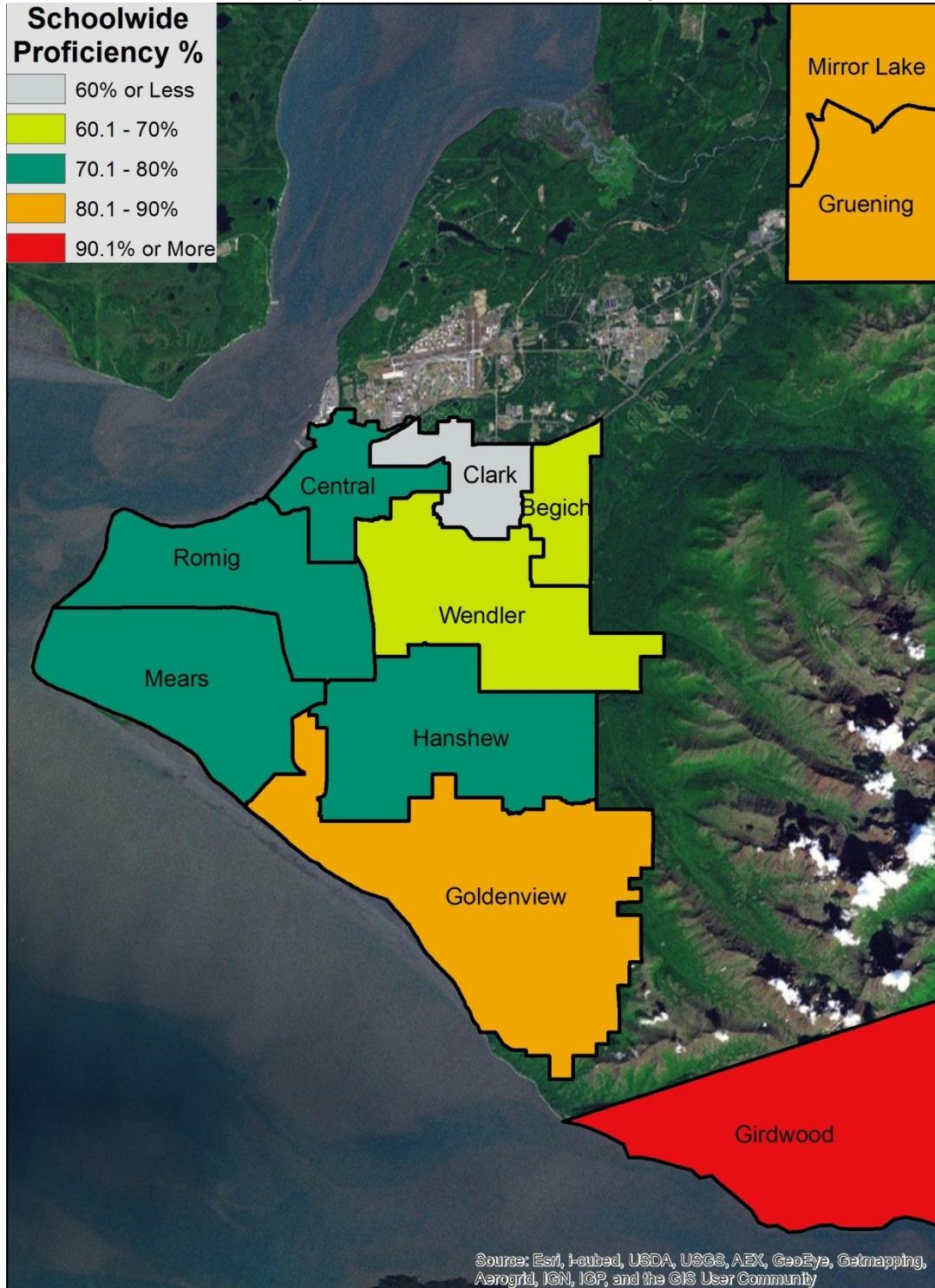
Source: State of Alaska, Department of Education & Early Development

**% Advanced or Proficient in Reading,  
2010-2011 Standards Based Assessment,  
ASD Middle Schools  
(School Boundaries Are Shown)**



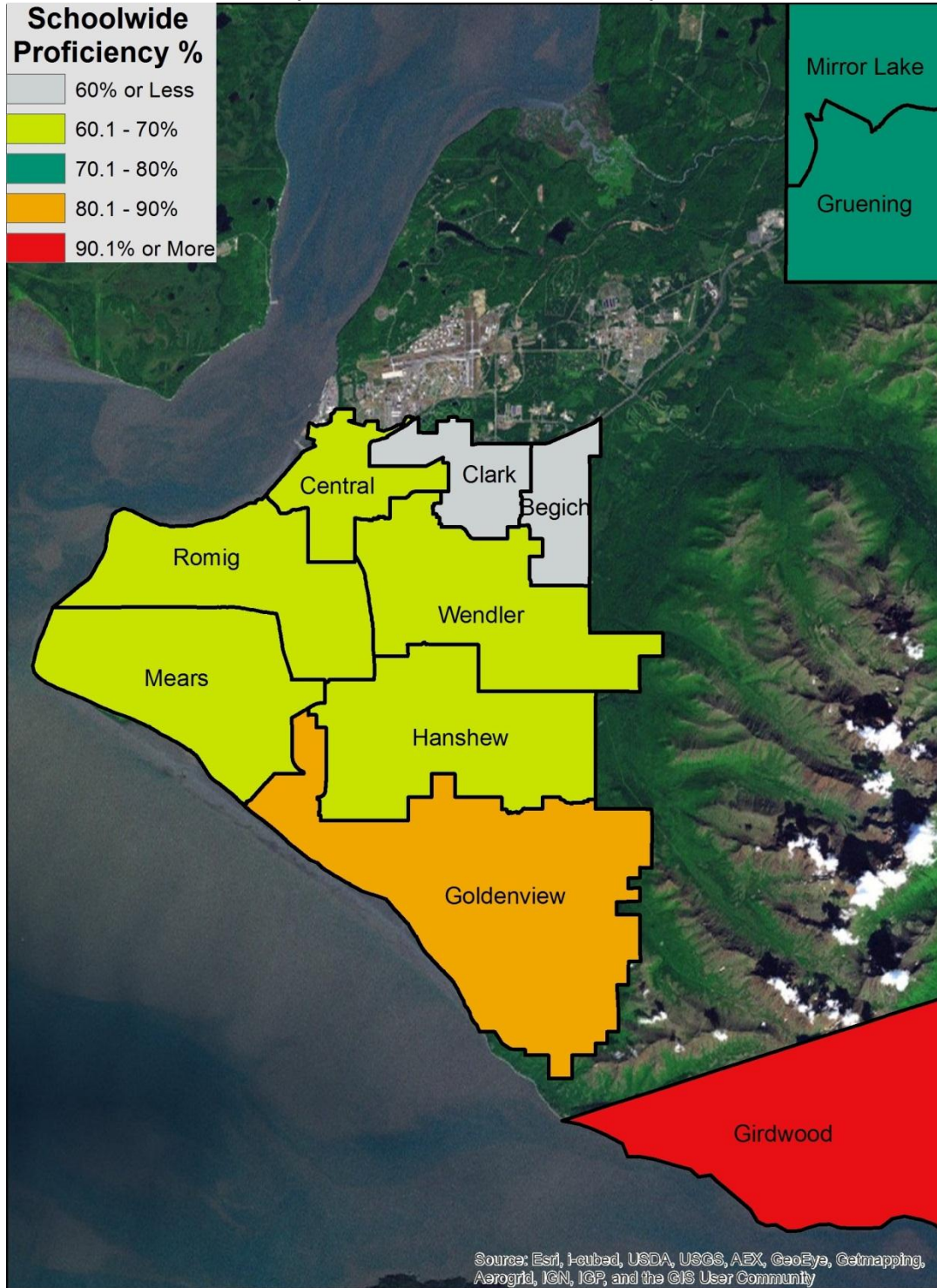
Source: State of Alaska, Department of Education & Early Development

**% Advanced or Proficient in Writing,  
2010-2011 Standards Based Assessment,  
ASD Middle Schools  
(School Boundaries Are Shown)**



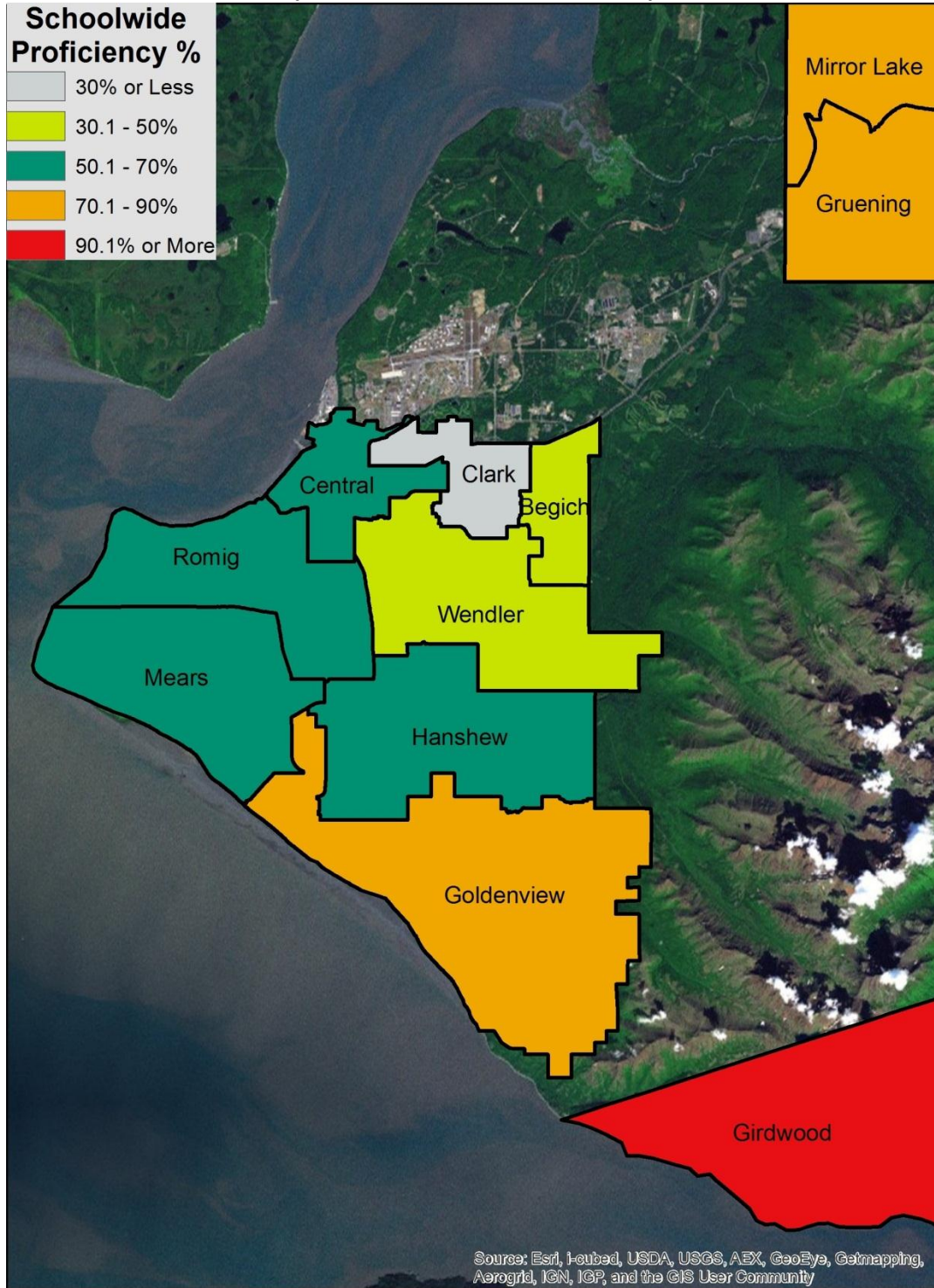
Source: State of Alaska, Department of Education & Early Development

**% Advanced or Proficient in Mathematics,  
2010-2011 Standards Based Assessment,  
ASD Middle Schools  
(School Boundaries Are Shown)**



Source: State of Alaska, Department of Education & Early Development

**% Advanced or Proficient in Science,  
2010-2011 Standards Based Assessment,  
ASD Middle Schools  
(School Boundaries Are Shown)**



Source: State of Alaska, Department of Education & Early Development

## Anchorage School District High School Enrollment, 2006/7-2017/18 (Highlighted Numbers Indicate Schools Over Capacity)

School Name	Student	Student Enrollment, Historic & Projected											
	Capacity	2006-07	2007-08	2008-09	2009-10	2010-11	2011-12	2012-13	2013-14	2014-15	2015-16	2016-17	2017-18
Bartlett	2,007	1,739	1,706	1,696	1,710	1,638	1,614	1,597	1,622	1,624	1,647	1,643	1,624
Chugiak	1,792	1,418	1,362	1,270	1,266	1,229	1,160	1,155	1,173	1,168	1,190	1,188	1,173
Dimond	1,642	1,862	1,818	1,791	1,795	1,785	1,723	1,686	1,688	1,694	1,730	1,729	1,706
Eagle River	908	837	867	844	918	895	835	824	803	825	840	838	828
East	2,300	2,201	2,183	2,188	2,281	2,224	2,197	2,168	2,173	2,185	2,192	2,183	2,161
Service	2,218	1,938	1,886	1,918	1,903	1,800	1,764	1,736	1,737	1,745	1,762	1,762	1,739
South	1,628	1,730	1,780	1,727	1,644	1,528	1,547	1,528	1,555	1,591	1,598	1,598	1,578
West	1,665	1,898	1,843	1,801	1,835	1,839	1,842	1,839	1,855	1,837	1,813	1,811	1,787

Source: Anchorage School District

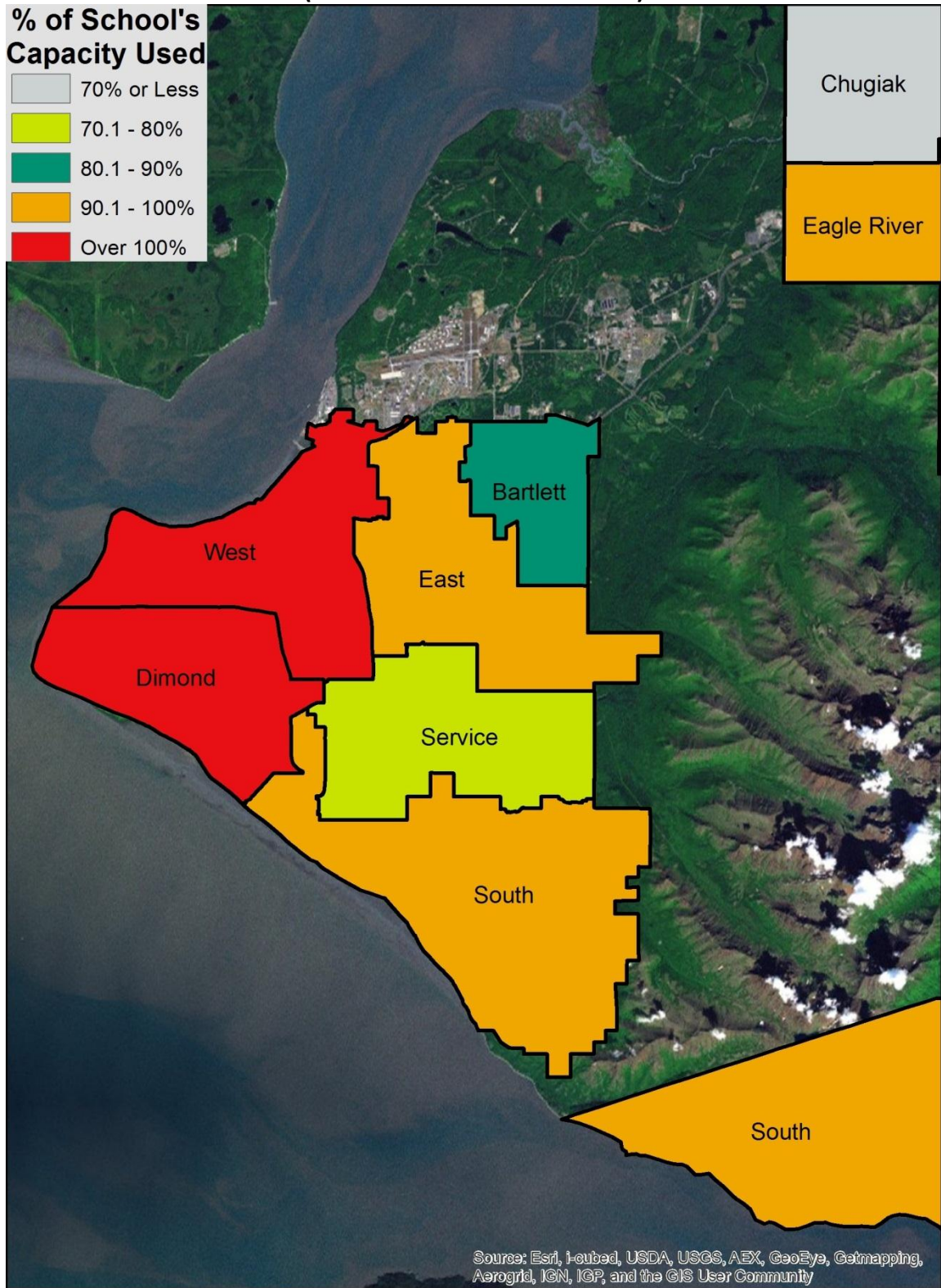
## Student Race/Ethnicity, by High School, Anchorage School District, 2011-12

School Name	African American		AK Native or	Asian or Pacific	2 or More	Hispanic/	Total
	White	or Black	American Indian	Islander	Races	Latino	
Bartlett	33%	12%	9%	21%	15%	10%	67%
Chugiak	77%	2%	5%	3%	7%	5%	23%
Dimond	53%	3%	7%	16%	11%	9%	47%
Eagle River	66%	9%	2%	4%	8%	11%	34%
East	26%	11%	10%	31%	11%	12%	74%
Service	50%	4%	9%	14%	12%	11%	50%
South	73%	2%	4%	8%	5%	7%	27%
West	38%	8%	10%	21%	11%	13%	62%

Source: Anchorage School District

## ASD High School Capacity Used, 2011-12

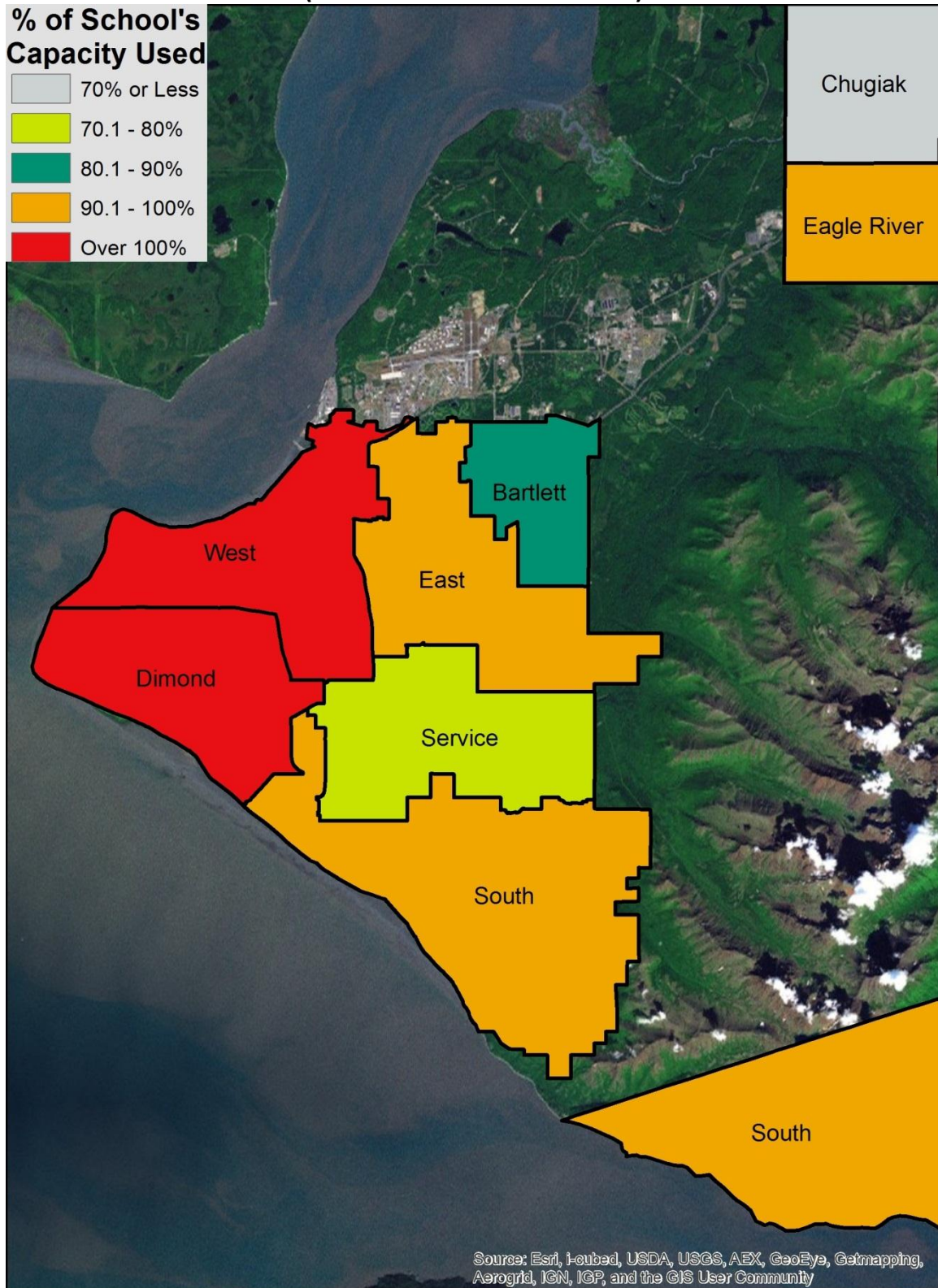
(School Boundaries Are Shown)



Source: Anchorage School District

# Projected ASD High School Capacity Usage, 2016-17

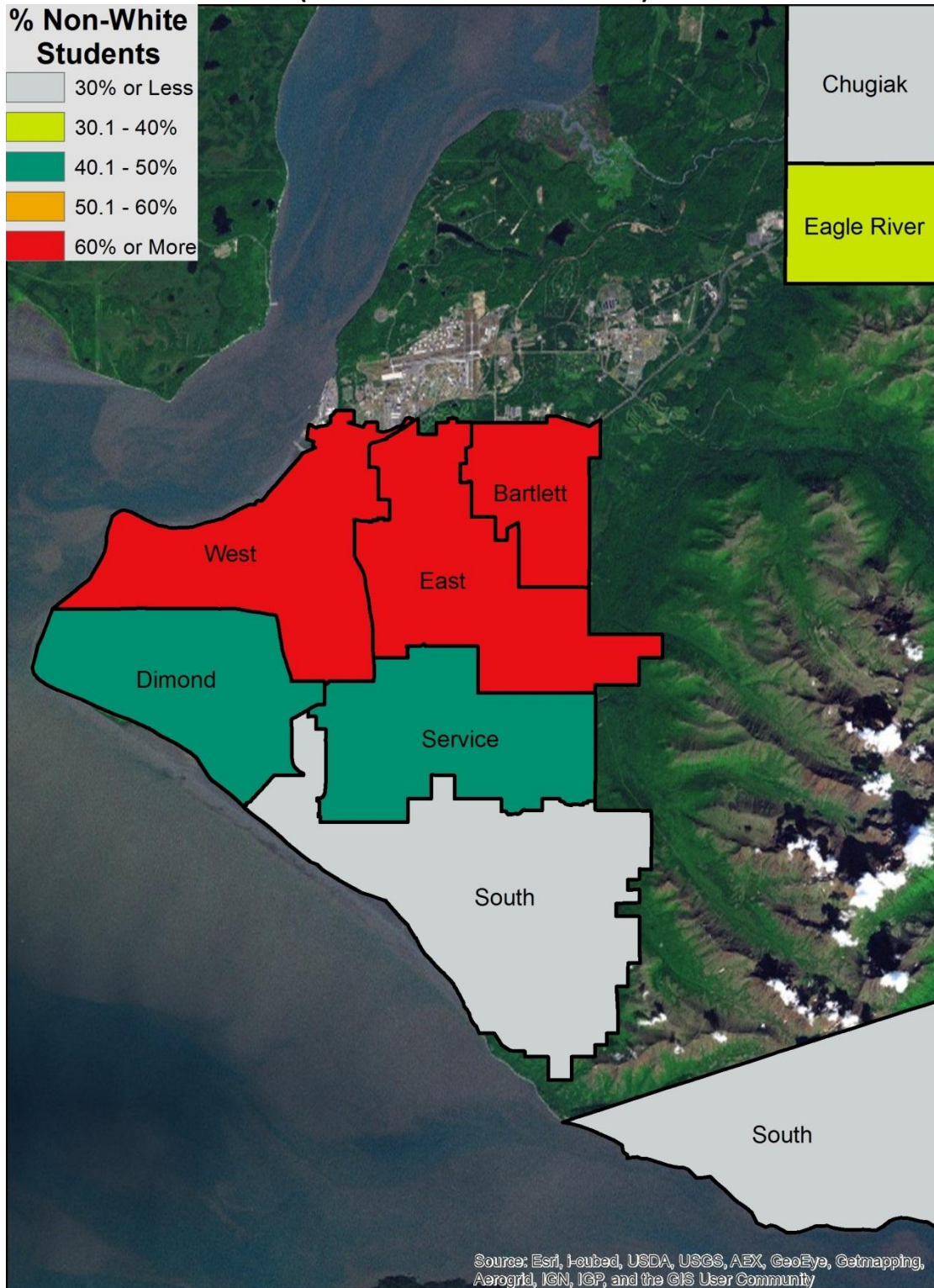
(School Boundaries Are Shown)



Source: Anchorage School District

# Non-White Student Population %, ASD High Schools, 2011-12 School Year

(School Boundaries Are Shown)



Source: Anchorage School District

## Standard Based Assessment Levels, Anchorage School District High Schools, All Grades, All Students, 2010-11

School Name	Reading,		Writing,		Mathematics,		Science,		% of Core Academic Classes Taught by Highly Qualified Teachers
	Proficient or Advanced	Below or Far Below Proficient	Proficient or Advanced	Below or Far Below Proficient	Proficient or Advanced	Below or Far Below Proficient	Proficient or Advanced	Below or Far Below Proficient	
Bartlett	69.52%	30.48%	62.68%	37.32%	49.76%	50.24%	55.68%	44.32%	92.61%
Chugiak	87.76%	12.24%	85.71%	14.29%	76.28%	23.72%	84.79%	15.21%	97.08%
Dimond	83.65%	16.35%	80.47%	19.53%	67.96%	32.04%	77.36%	22.64%	95.66%
Eagle River	87.59%	12.41%	83.81%	16.19%	70.65%	29.35%	77.70%	22.30%	90.87%
East	65.57%	34.43%	64.04%	35.96%	52.83%	47.17%	54.12%	45.88%	96.89%
Service	82.27%	17.73%	79.84%	20.16%	67.45%	32.55%	71.40%	28.60%	90.76%
South	89.41%	10.59%	87.04%	12.96%	78.14%	21.86%	78.90%	21.10%	97.35%
West	72.56%	27.44%	70.42%	29.58%	54.19%	45.81%	61.68%	38.32%	94.59%

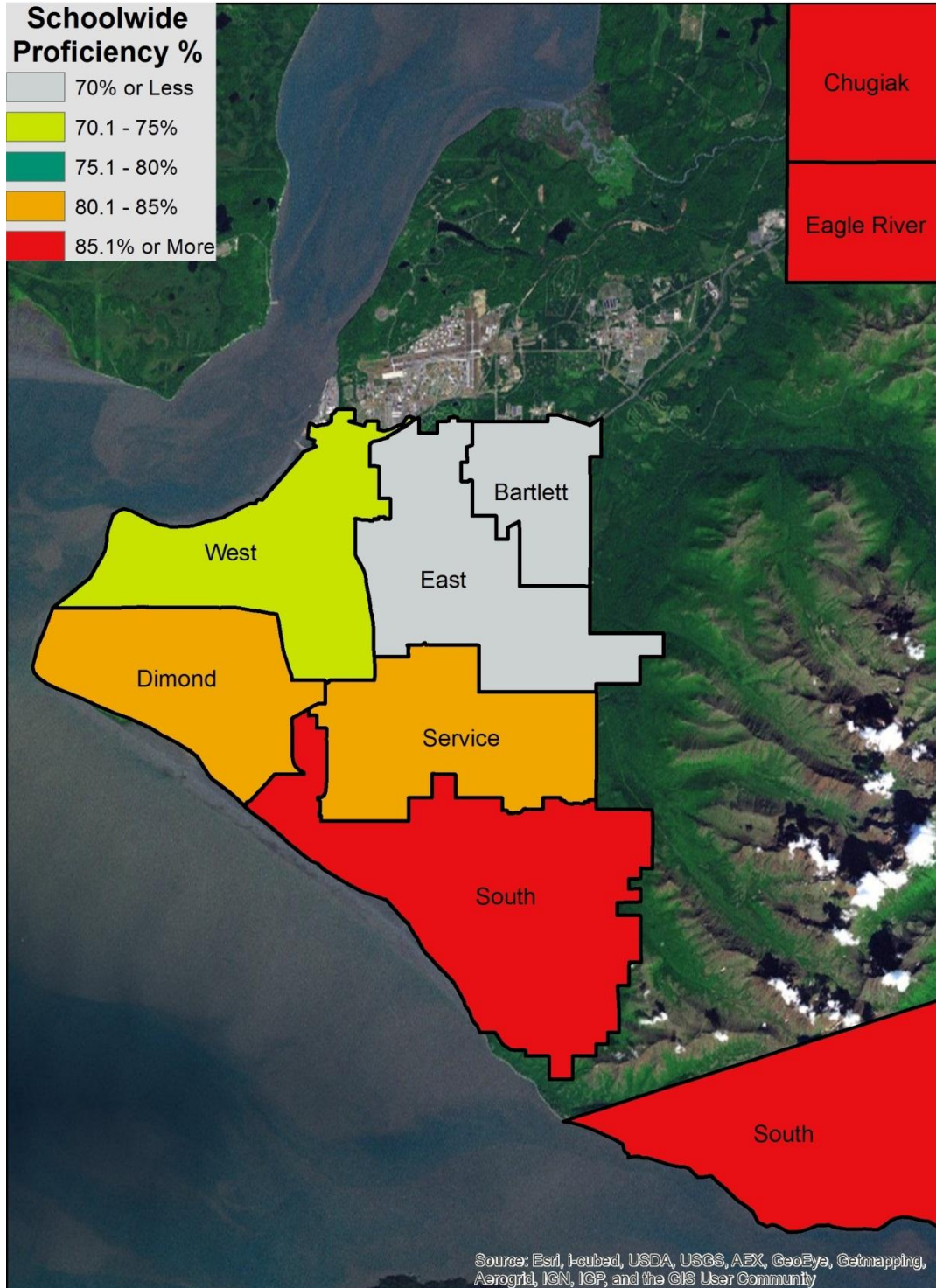
Source: State of Alaska, Department of Education & Early Development

## Dropout & Graduation Rates, Anchorage School District High Schools, 2006/7-2010/11

School Name	Annual Dropout Rate for Grades 7-12					Percent of Graduates, 5 yr. Cohort				
	2006-07	2007-08	2008-09	2009-10	2010-11	2006-07	2007-08	2008-09	2009-10	2010-11
Bartlett	7.63%	6.02%	6.93%	5.96%	9.65%	58.77%	62.58%	66.59%	68.60%	71.21%
Chugiak	2.82%	2.58%	1.10%	2.92%	4.16%	80.93%	81.41%	88.39%	83.87%	82.33%
Dimond	4.03%	0.02%	1.90%	2.33%	2.63%	83.13%	81.99%	87.83%	84.54%	86.12%
Eagle River	3.23%	1.51%	1.42%	0.87%	2.46%	81.70%	85.87%	88.32%	89.81%	81.43%
East	5.60%	6.66%	3.42%	4.88%	4.16%	68.42%	66.67%	72.21%	74.50%	76.44%
Service	4.22%	3.84%	3.80%	4.15%	5.17%	71.60%	75.87%	80.26%	80.82%	83.50%
South	2.59%	1.46%	1.73%	2.13%	1.24%	83.37%	82.79%	86.07%	88.91%	90.26%
West	8.30%	5.66%	5.39%	5.78%	4.90%	56.42%	64.74%	69.41%	66.67%	74.27%

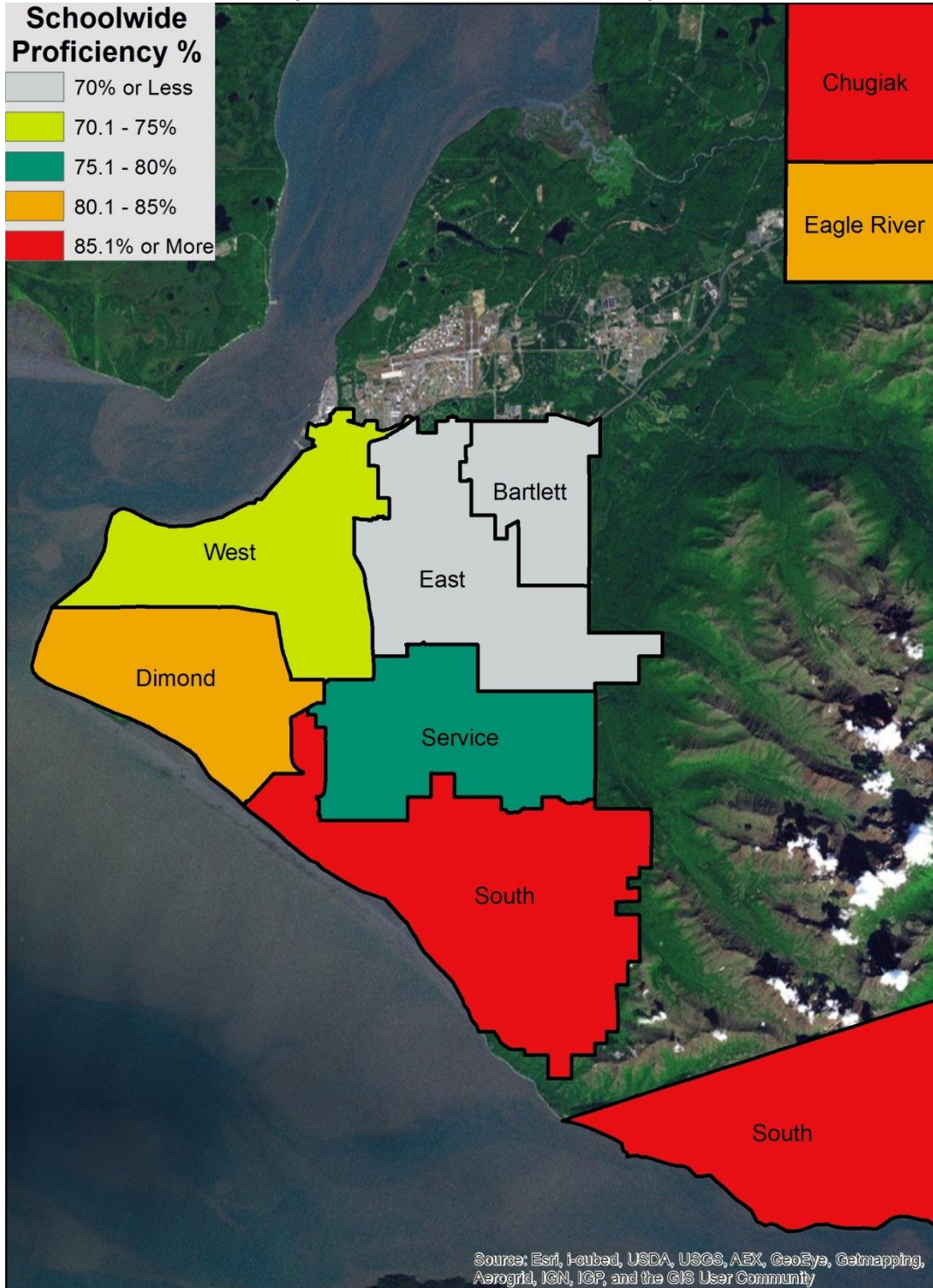
Source: Anchorage School District

**% Advanced or Proficient in Reading,  
2010-2011 Standards Based Assessment,  
ASD High Schools  
(School Boundaries Are Shown)**



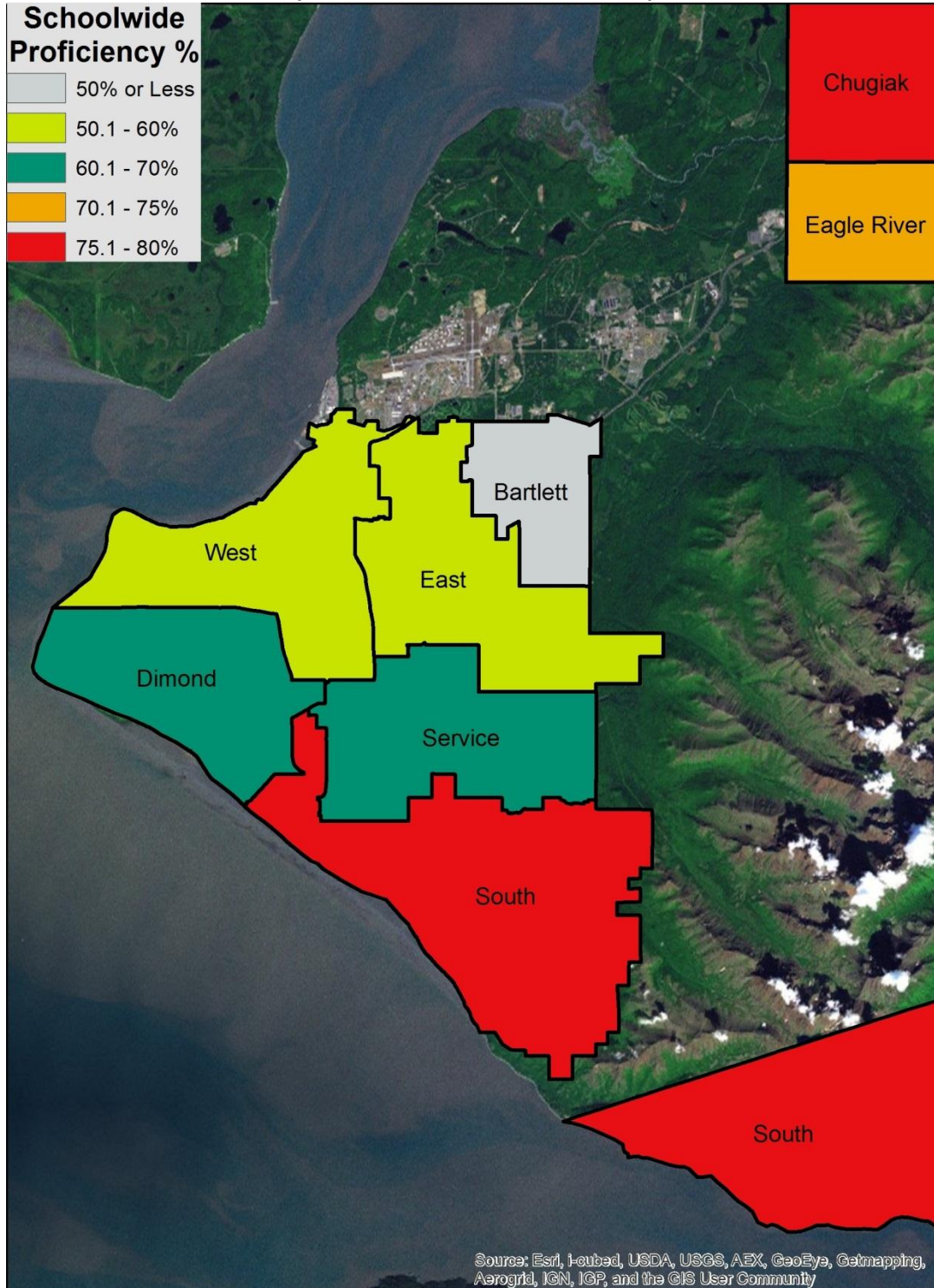
Source: State of Alaska, Department of Education & Early Development

**% Advanced or Proficient in Writing,  
2010-2011 Standards Based Assessment,  
ASD High Schools  
(School Boundaries Are Shown)**



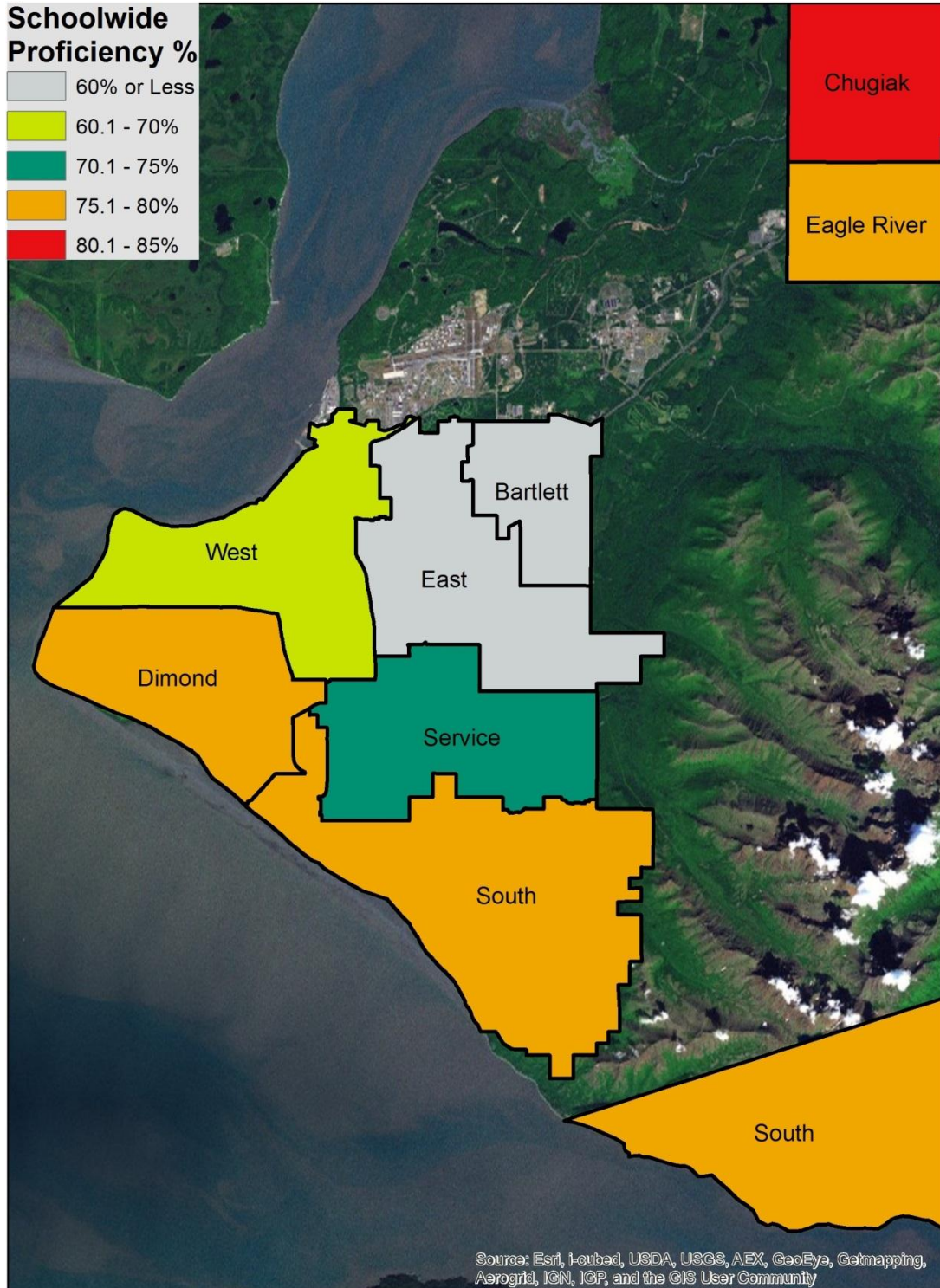
Source: State of Alaska, Department of Education & Early Development

**% Advanced or Proficient in Mathematics,  
2010-2011 Standards Based Assessment,  
ASD High Schools  
(School Boundaries Are Shown)**



Source: State of Alaska, Department of Education & Early Development

**% Advanced or Proficient in Science,  
2010-2011 Standards Based Assessment,  
ASD High Schools  
(School Boundaries Are Shown)**



Source: State of Alaska, Department of Education & Early Development

## Anchorage School District Alternative & Charter School Enrollment, 2006/7-2017/18 (Highlighted Numbers Indicate Schools Over Capacity)

Alternative Schools	Student Enrollment, Historic & Projected											
	2006-07	2007-08	2008-09	2009-10	2010-11	2011-12	2012-13	2013-14	2014-15	2015-16	2016-17	2017-18
AVAIL	42	63	60	59	62	64	61	58	61	61	62	61
Benson SAVE/SEARCH	243	235	232	197	259	276	252	247	244	248	259	248
Continuation	21	20	29	10	19	34	24	25	26	25	24	24
Crossroads	65	56	53	43	44	33	36	35	38	37	37	37
McLaughlin	124	134	100	125	116	99	105	106	107	109	109	106
Polaris K-12	478	472	479	473	479	475	477	492	495	503	504	516
SAVE I	214	259	244	222	220	230	220	209	210	212	222	215
Steller	297	284	294	283	271	274	291	283	284	277	274	274
<b>Charter Schools</b>												
AK Native Cultural	0	0	156	184	191	208	195	199	206	213	228	235
Aquarian	355	354	361	352	370	378	375	373	382	379	381	387
Eagle Academy	163	167	164	163	162	172	166	162	164	166	168	171
Family Partner	487	523	572	590	550	535	545	540	555	576	586	605
Frontier	354	334	310	323	312	321	318	306	284	267	258	246
Highland Tech	262	243	240	238	236	219	230	219	229	231	234	231
Rilke Schule	0	184	218	264	313	345	360	380	389	393	395	403
Winterberry	162	173	186	199	200	213	222	220	226	226	230	223

Source: Anchorage School District

## Student Race/Ethnicity, by Alternative & Charter School, Anchorage School District, 2011-12

Alternative Schools	AK Native or Asian or						Total
	White	African American or Black	American Indian	Pacific Islander	2 or More Races	Hispanic/Latino	
AVAIL	23%	9%	25%	12%	22%	9%	77%
Benson SAVE/SEARCH	35%	9%	12%	16%	15%	13%	65%
Continuation	28%	10%	5%	23%	30%	5%	73%
Crossroads	22%	16%	16%	22%	22%	3%	78%
McLaughlin	23%	15%	33%	5%	16%	8%	77%
Polaris K-12	73%	1%	4%	4%	11%	8%	27%
SAVE I	42%	11%	10%	14%	12%	11%	58%
Steller	73%	3%	4%	8%	7%	5%	27%
<b>Charter Schools</b>							
AK Native Cultural	6%	1%	56%	2%	30%	5%	94%
Aquarian	70%	4%	3%	5%	11%	6%	30%
Eagle Academy	79%	2%	1%	2%	6%	9%	21%
Family Partner	66%	4%	7%	2%	13%	8%	34%
Frontier	69%	4%	13%	1%	6%	6%	31%
Highland Tech	62%	5%	7%	6%	12%	7%	38%
Rilke Schule	81%	0%	2%	3%	9%	5%	19%
Winterberry	73%	2%	4%	1%	11%	9%	27%

Source: Anchorage School District

## Standard Based Assessment Levels, Anchorage School District Alternative & Charter Schools, All Grades, All Students, 2010-11

	Reading,		Writing,		Mathematics,		Science,		% of Core Academic Classes Taught by Highly Qualified Teachers
	Proficient or Advanced	Below or Far Below Proficient	Proficient or Advanced	Below or Far Below Proficient	Proficient or Advanced	Below or Far Below Proficient	Proficient or Advanced	Below or Far Below Proficient	
<b>Alternative Schools</b>									
AVAIL	63.16%	36.84%	50.00%	50.00%	11.11%	88.89%	18.18%	81.82%	100.00%
Benson SAVE/SEARCH	59.19%	40.81%	59.18%	40.82%	28.57%	71.43%	51.51%	48.49%	90.67%
Continuation	58.82%	41.18%	50.00%	50.00%	35.29%	64.71%	46.15%	53.85%	50.00%
Crossroads	77.78%	22.22%	44.44%	55.56%	33.33%	66.67%	-	-	20.00%
McLaughlin	65.79%	34.21%	55.26%	44.74%	28.20%	71.80%	52.17%	47.83%	66.18%
Polaris K-12	95.33%	4.67%	94.33%	5.67%	88.55%	11.45%	81.98%	18.02%	100.00%
SAVE I	-	-	-	-	-	-	-	-	90.87%
Steller	94.94%	5.06%	91.80%	8.20%	83.51%	16.49%	83.13%	16.87%	95.74%
<b>Charter Schools</b>									
AK Native Cultural	64.54%	35.46%	61.26%	38.74%	62.17%	37.83%	42.30%	57.70%	78.57%
Aquarian	90.96%	9.04%	91.49%	8.51%	93.08%	6.92%	81.25%	18.75%	100.00%
Eagle Academy	97.73%	2.27%	96.59%	3.41%	95.45%	4.55%	87.50%	12.50%	100.00%
Family Partner	84.57%	15.43%	80.00%	20.00%	65.91%	34.09%	69.90%	30.10%	90.32%
Frontier	84.39%	15.61%	77.25%	22.75%	62.50%	37.50%	67.35%	32.65%	0.00%
Highland Tech	85.34%	14.66%	74.34%	25.66%	55.63%	44.37%	70.27%	29.73%	76.47%
Rilke Schule	95.41%	4.59%	93.46%	6.54%	90.74%	9.26%	73.34%	26.66%	80.56%
Winterberry	75.22%	24.78%	77.31%	22.69%	66.10%	33.90%	54.29%	45.71%	70.00%

Source: State of Alaska, Department of Education & Early Development

## Dropout & Graduation Rates, Anchorage School District Alternative & Charter Schools, 2006/7-2010/11

Alternative Schools	Annual Dropout Rate for Grades 7-12					Percent of Graduates, 5 yr. Cohort				
	2006-07	2007-08	2008-09	2009-10	2010-11	2006-07	2007-08	2008-09	2009-10	2010-11
AVAIL	51.11%	53.23%	12.90%	33.33%	42.19%	31.03%	22.22%	28.07%	47.54%	51.72%
Benson SAVE/SEARCH	34.75%	19.76%	27.82%	26.47%	23.55%	33.51%	41.21%	38.46%	36.92%	51.47%
Continuation	0.00%	0.00%	50.00%	53.85%	126.32%	n/a	n/a	11.11%	0.00%	0.00%
Crossroads	38.81%	45.61%	10.91%	23.91%	31.11%	42.59%	41.30%	47.22%	46.88%	48.28%
McLaughlin	72.66%	30.16%	17.48%	14.39%	27.43%	13.76%	10.71%	27.03%	21.31%	26.92%
Polaris K-12	0.84%	0.00%	0.00%	0.00%	0.00%	94.12%	93.55%	96.00%	96.30%	89.66%
SAVE I	30.66%	38.22%	22.83%	24.43%	36.36%	30.33%	31.71%	43.32%	44.05%	59.21%
Steller	1.01%	0.00%	1.02%	0.70%	0.74%	97.50%	95.24%	97.30%	97.56%	97.62%
<b>Charter Schools</b>										
AK Native Cultural	-	-	-	-	-	-	-	-	-	-
Aquarian	-	-	-	-	-	-	-	-	-	-
Eagle Academy	-	-	-	-	-	-	-	-	-	-
Family Partner	1.60%	3.41%	5.96%	5.59%	5.48%	61.18%	56.10%	63.55%	61.36%	77.14%
Frontier	5.61%	14.29%	7.29%	6.84%	10.15%	55.74%	29.85%	43.86%	50.85%	69.05%
Highland Tech	2.57%	4.42%	4.10%	3.36%	1.79%	41.94%	40.00%	62.50%	51.85%	36.00%
Rilke Schule	-	0.00%	6.67%	0.00%	0.00%	-	-	-	-	-
Winterberry	-	-	-	-	-	-	-	-	-	-

Source: Anchorage School District