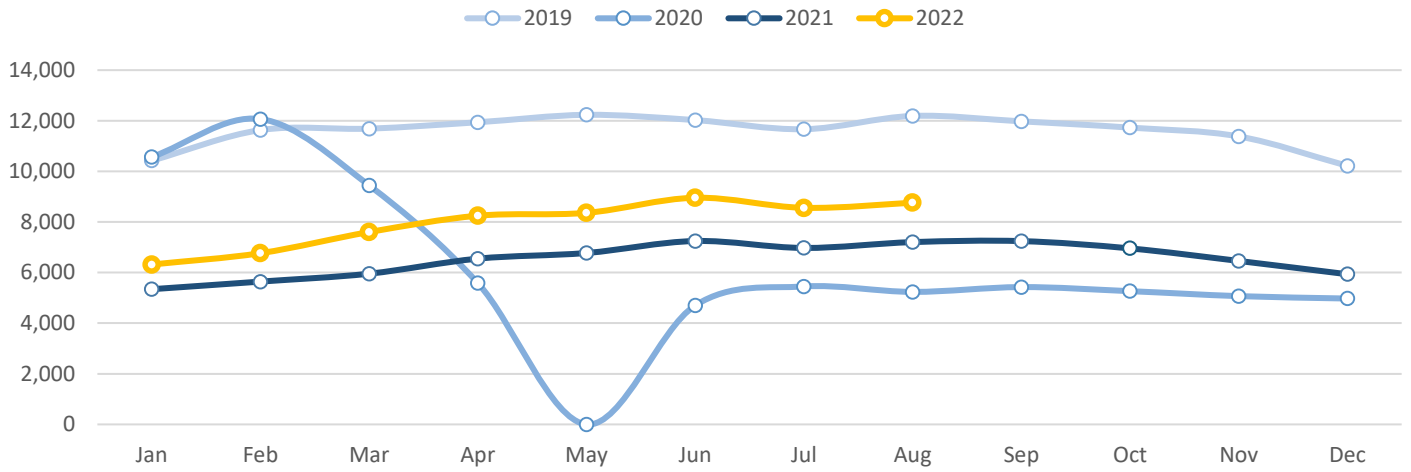


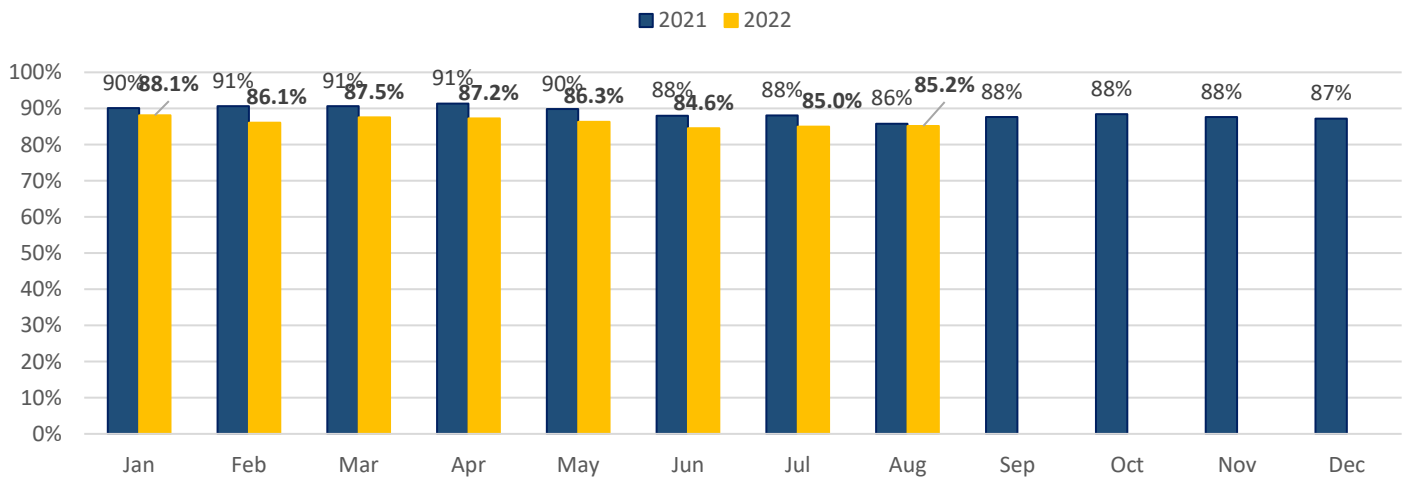
Ridership Report - August 2022



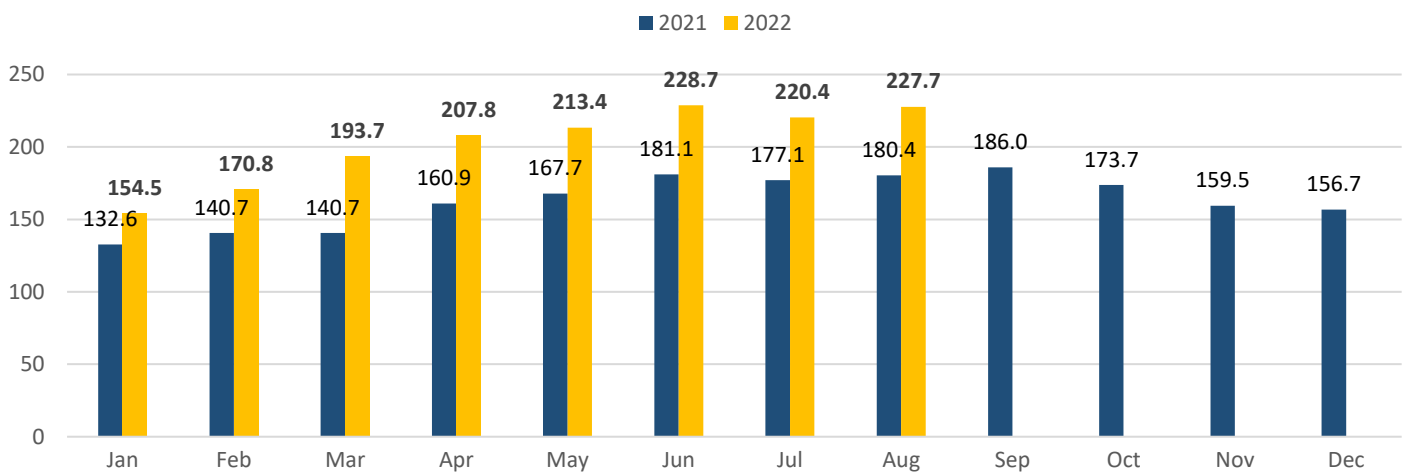
Monthly Weekday Average Ridership History



On-time performance by Month



Total Productivity by Month



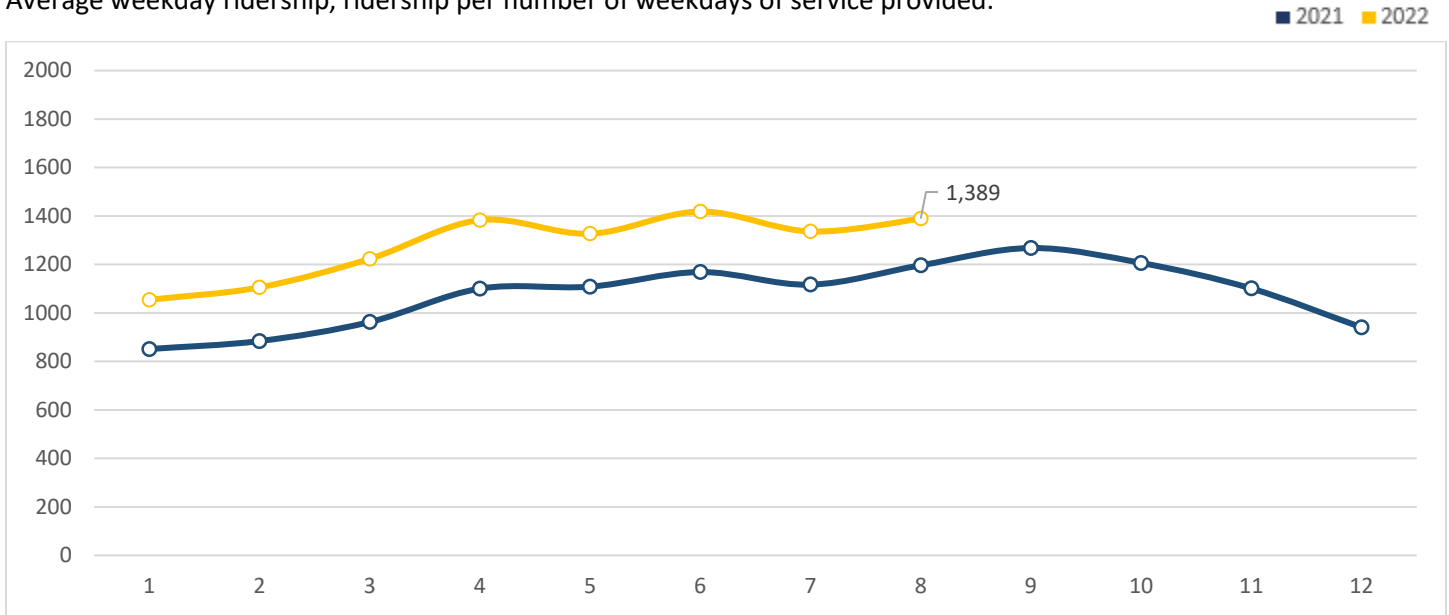
Route Report- August 2022

Frequent Routes, 15 Min Peak Frequency

Route 10

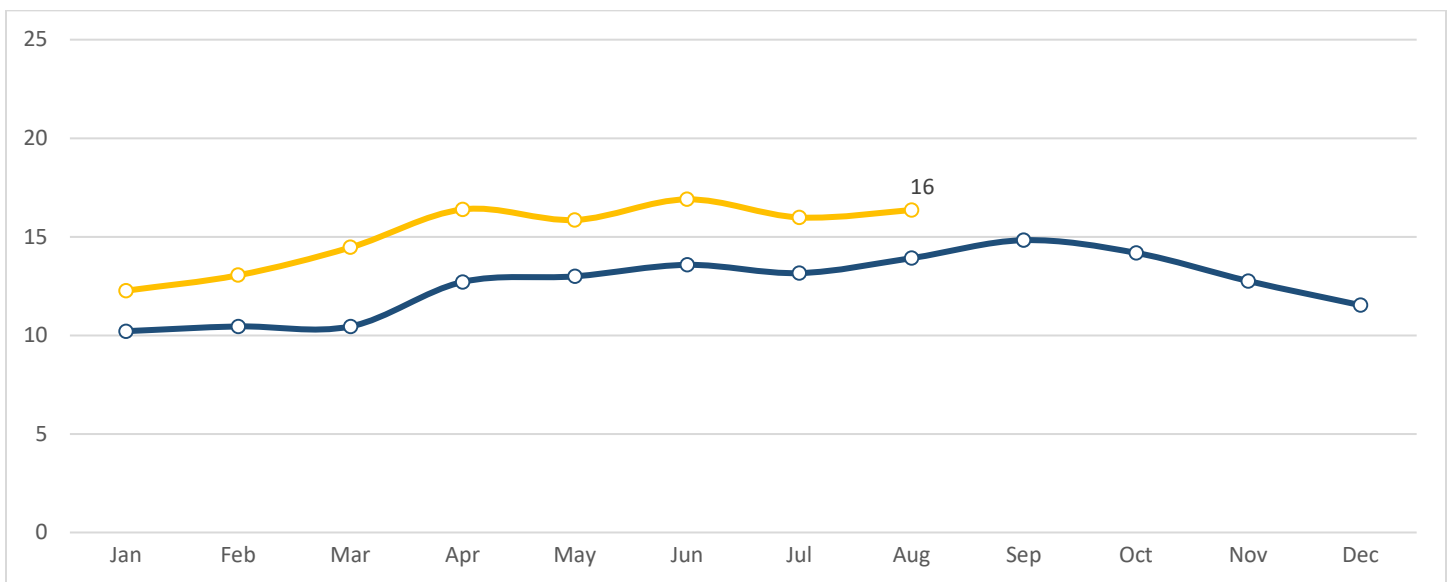
Ridership

Average weekday ridership, ridership per number of weekdays of service provided.



Productivity

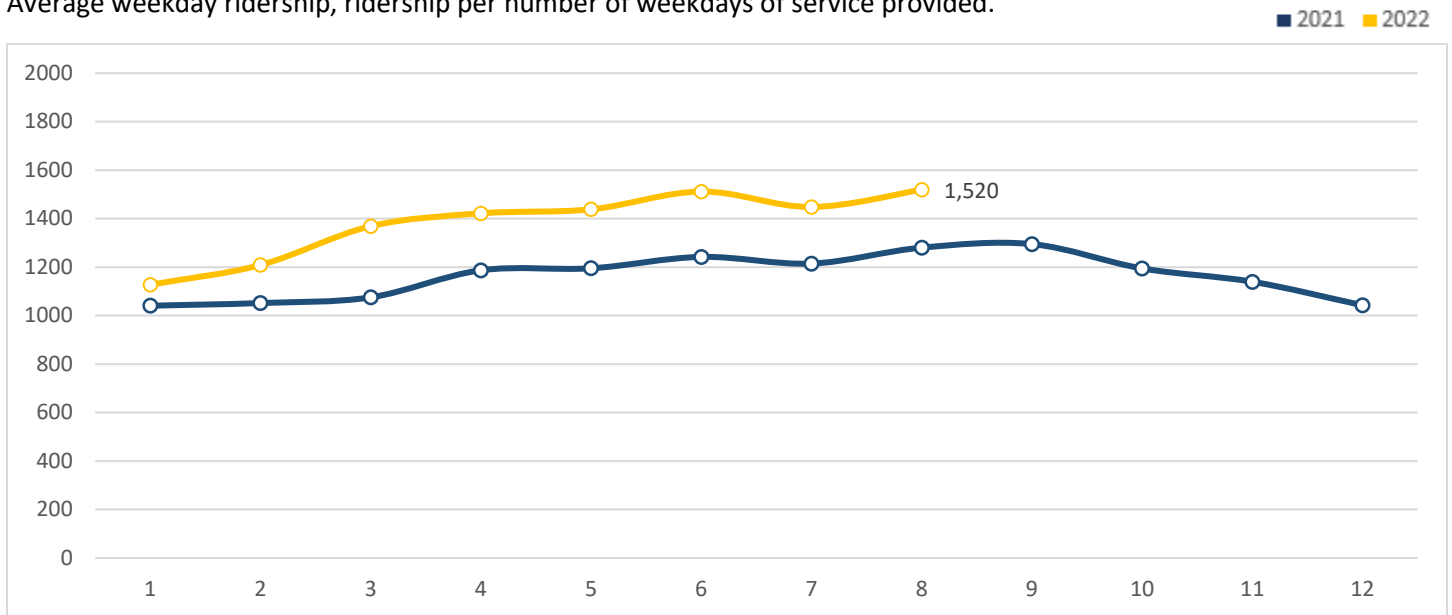
Productivity, boarding's per hour of service provided.



Route 20

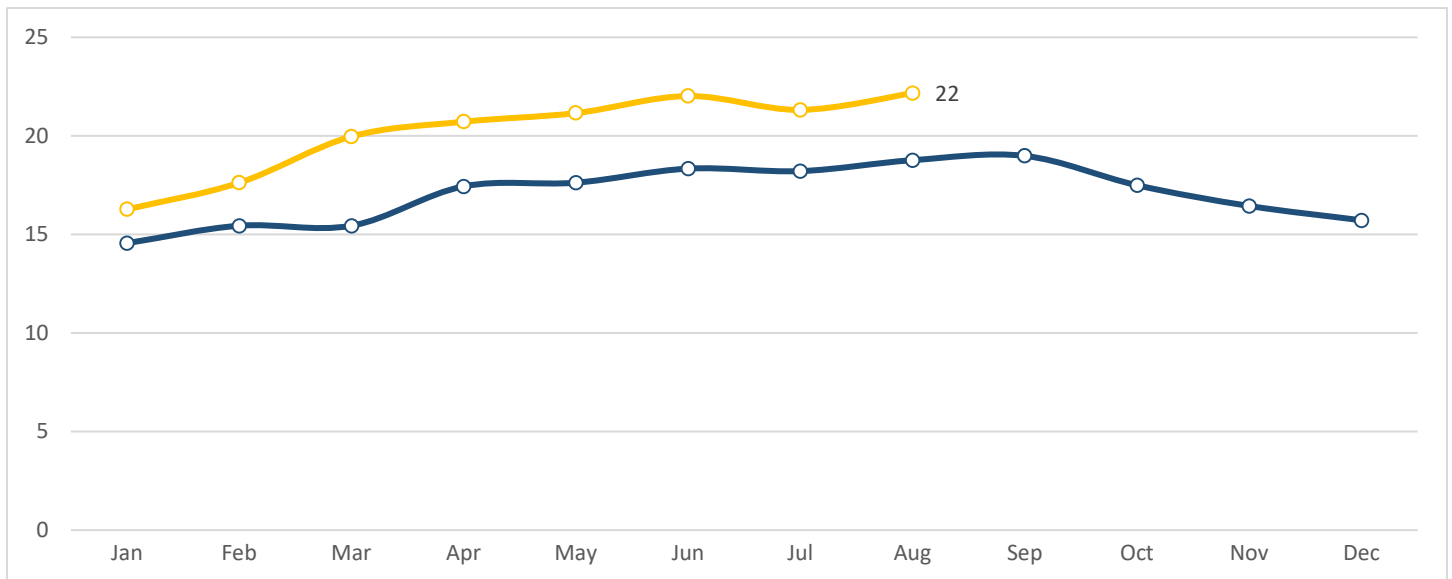
Ridership

Average weekday ridership, ridership per number of weekdays of service provided.



Productivity

Productivity, boarding's per hour of service provided.

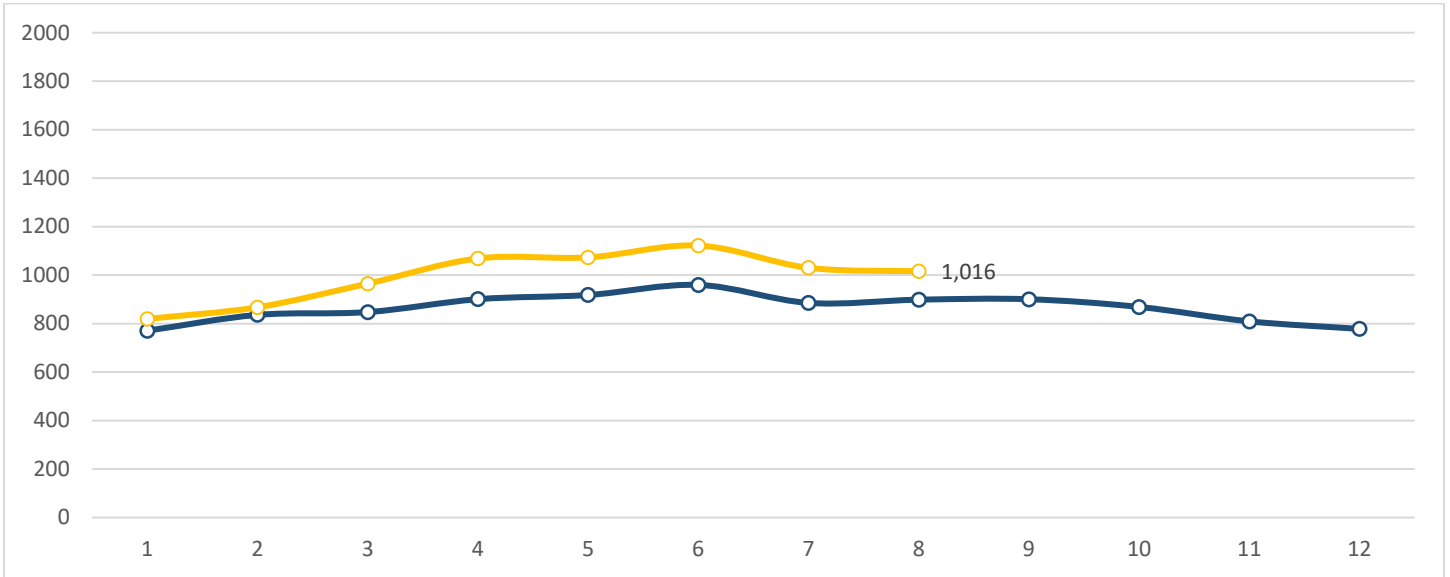


Route 30

Ridership

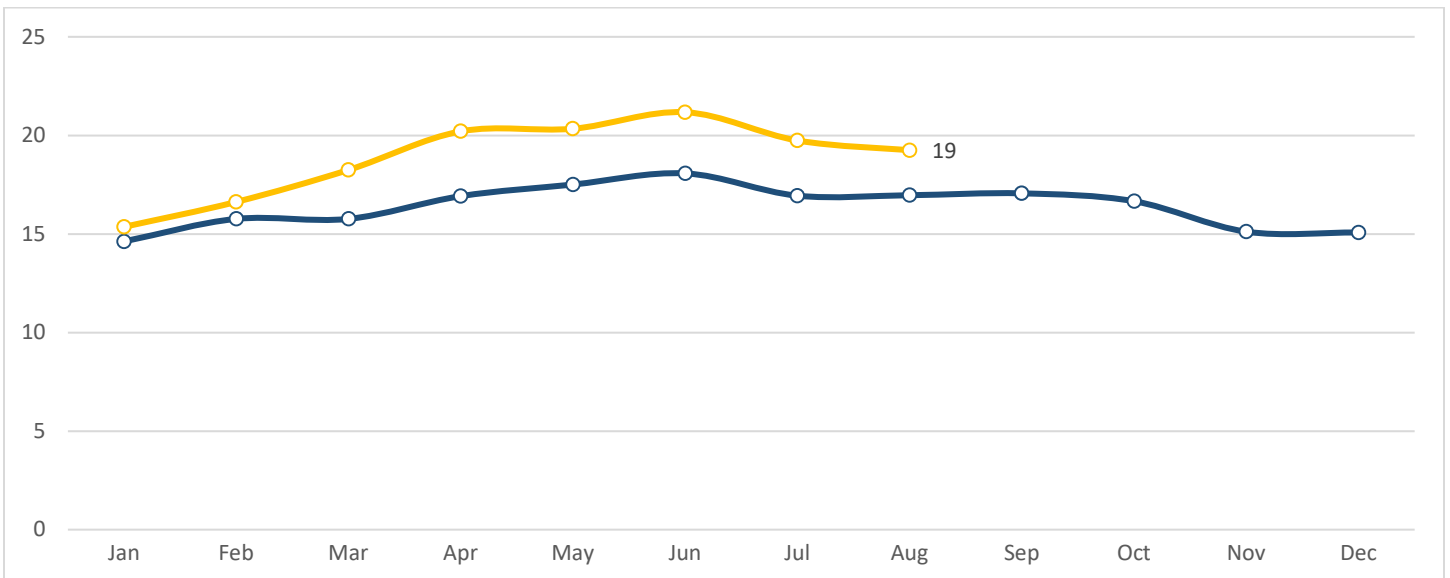
Average weekday ridership, ridership per number of weekdays of service provided.

■ 2021 ■ 2022



Productivity

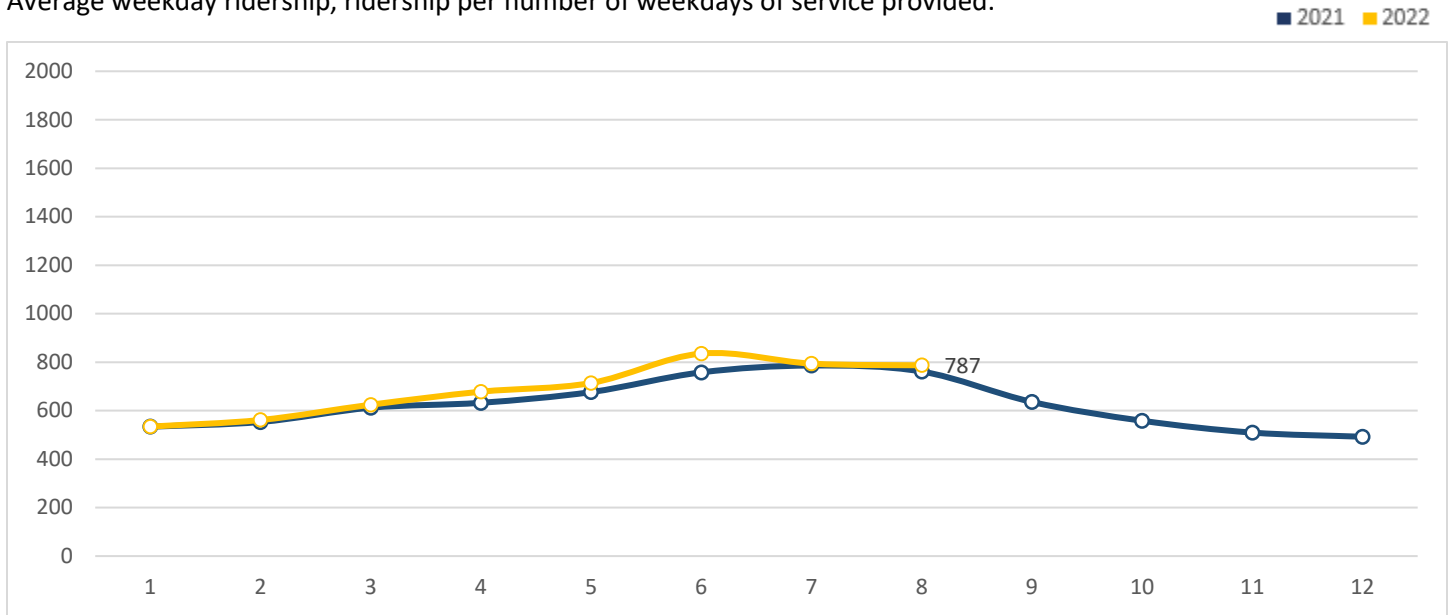
Productivity, boarding's per hour of service provided.



Route 40

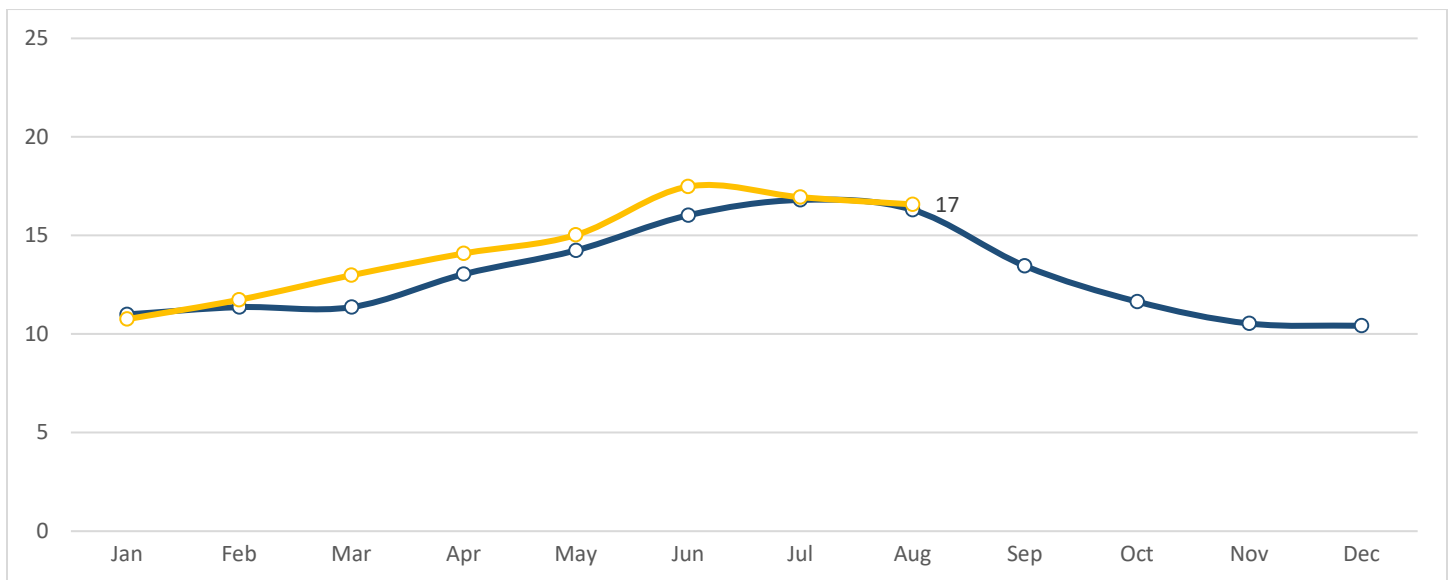
Ridership

Average weekday ridership, ridership per number of weekdays of service provided.



Productivity

Productivity, boarding's per hour of service provided.



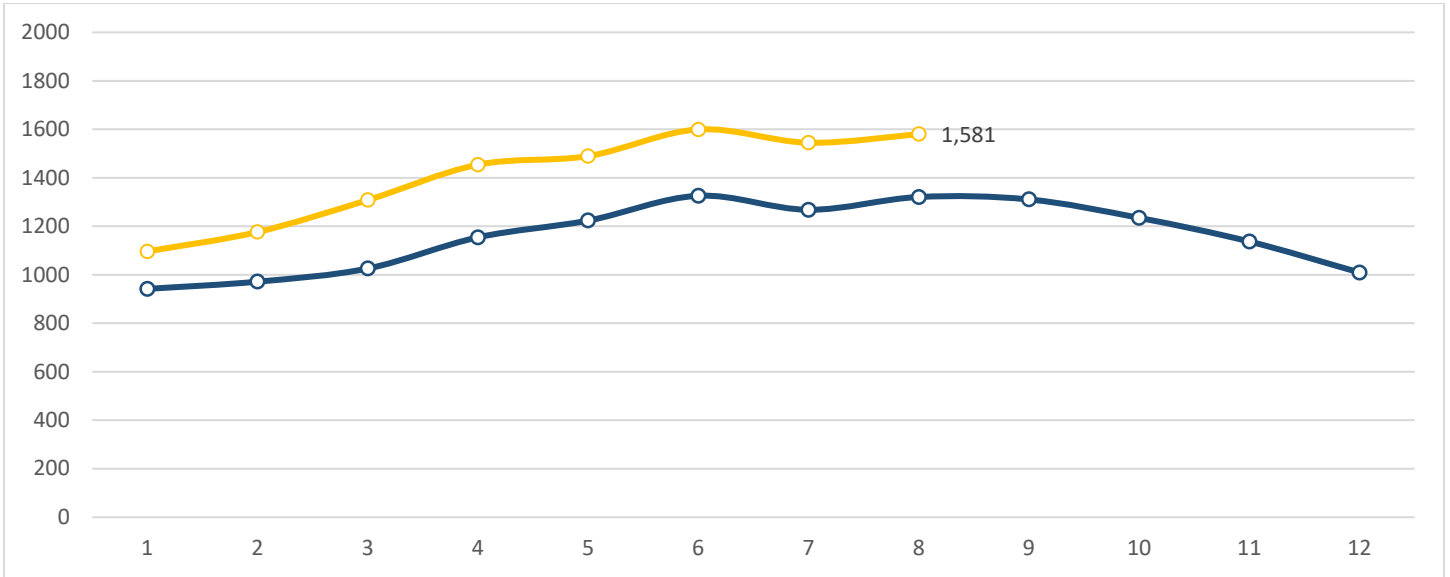
Standard Routes, 15 - 60 Min Peak Frequency

Route 25

Ridership

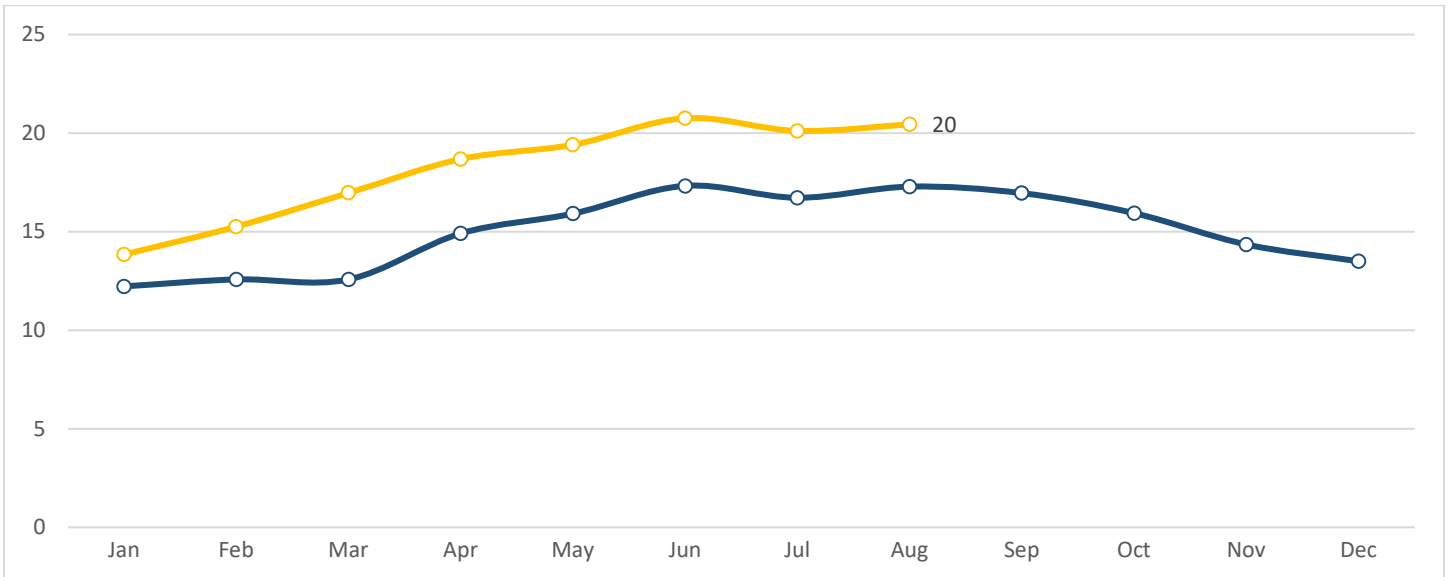
Average weekday ridership, ridership per number of weekdays of service provided.

2021 2022



Productivity

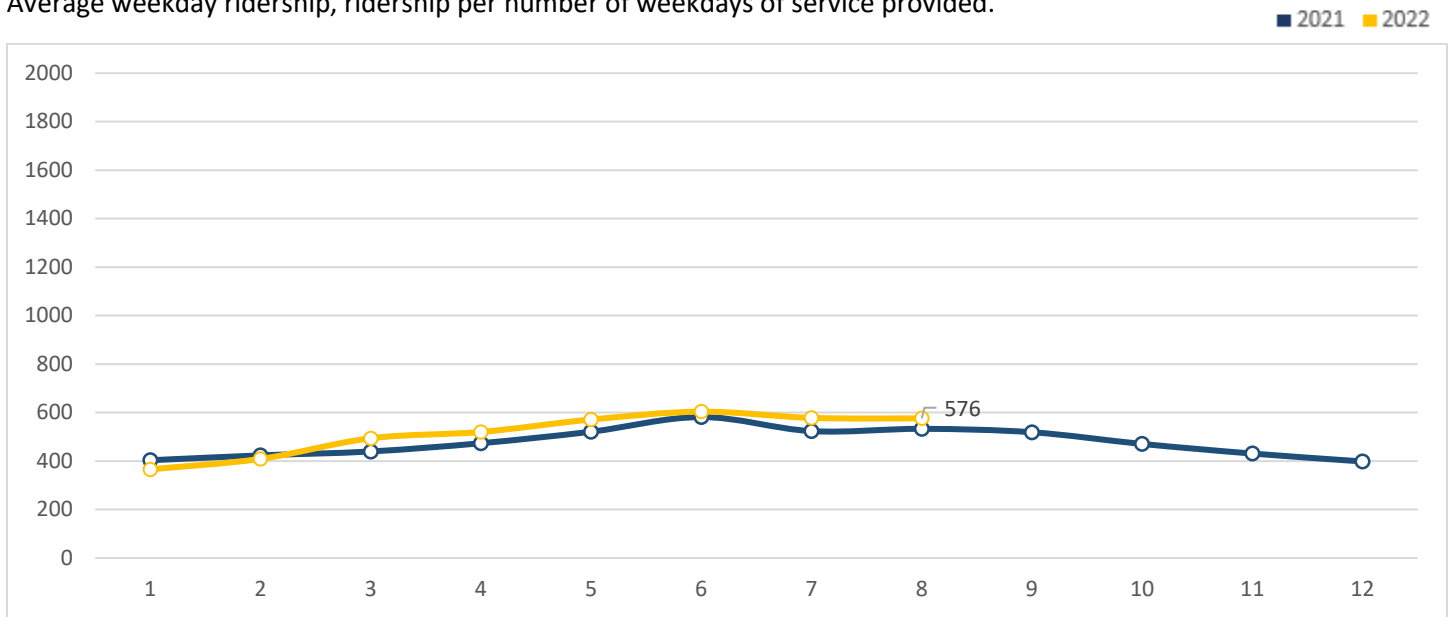
Productivity, boarding's per hour of service provided.



Route 35

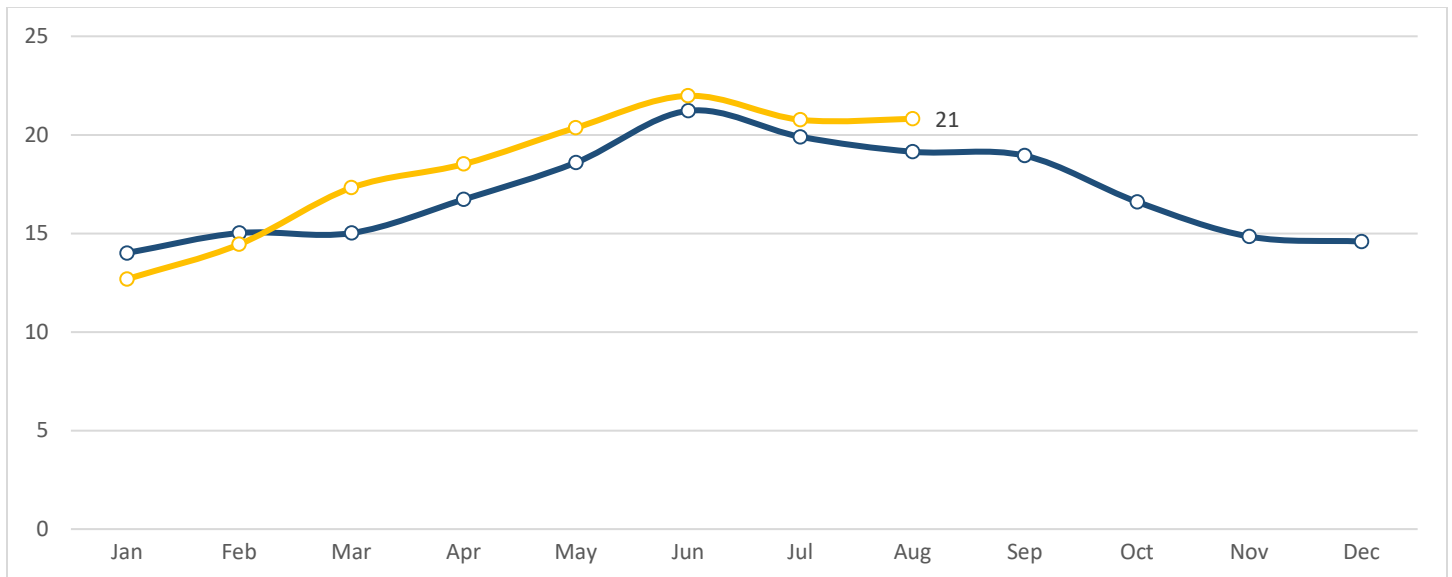
Ridership

Average weekday ridership, ridership per number of weekdays of service provided.



Productivity

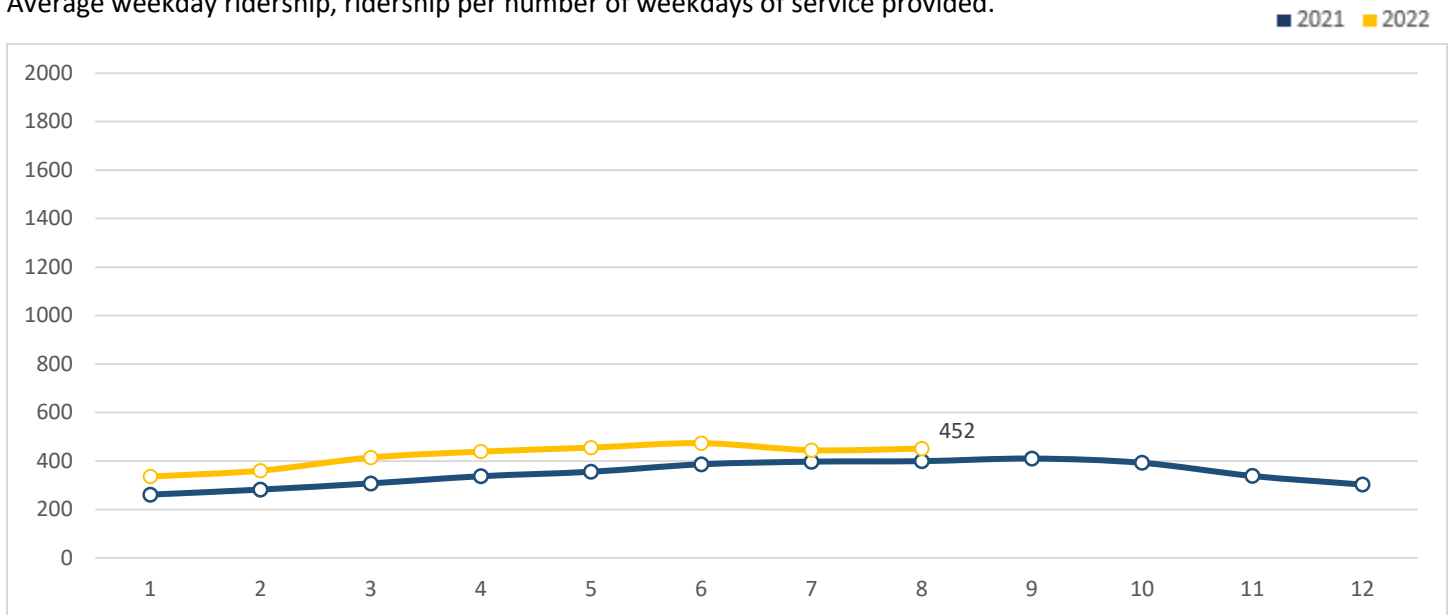
Productivity, boarding's per hour of service provided.



Route 55

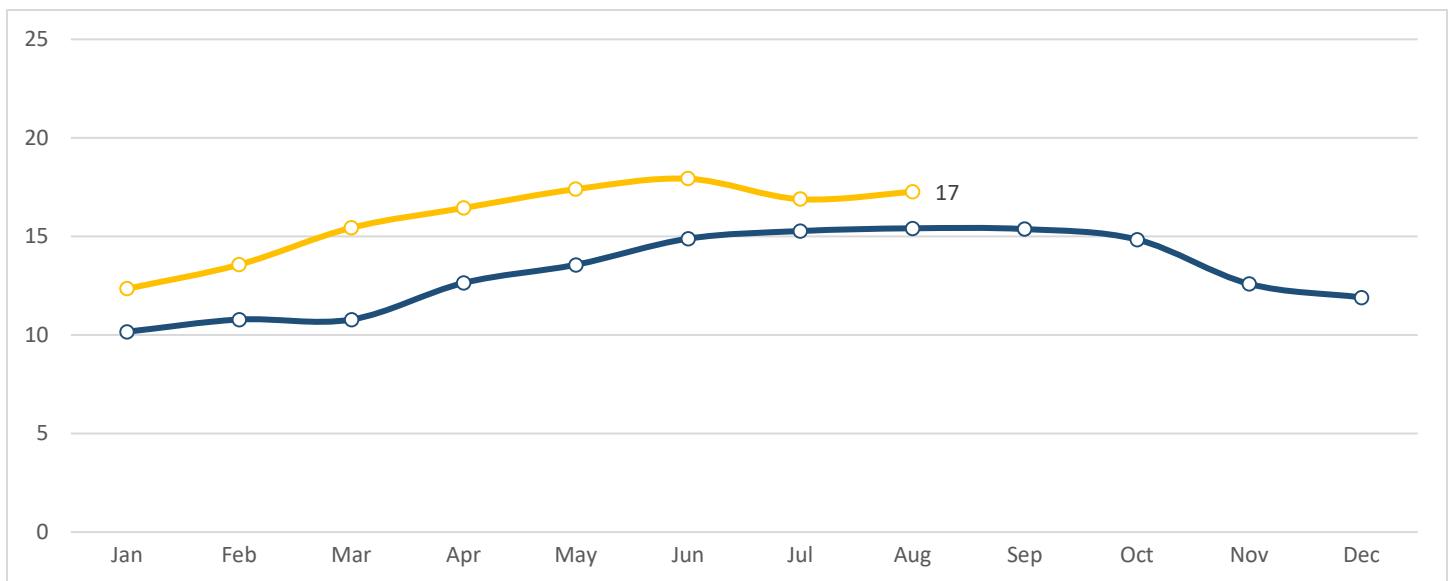
Ridership

Average weekday ridership, ridership per number of weekdays of service provided.



Productivity

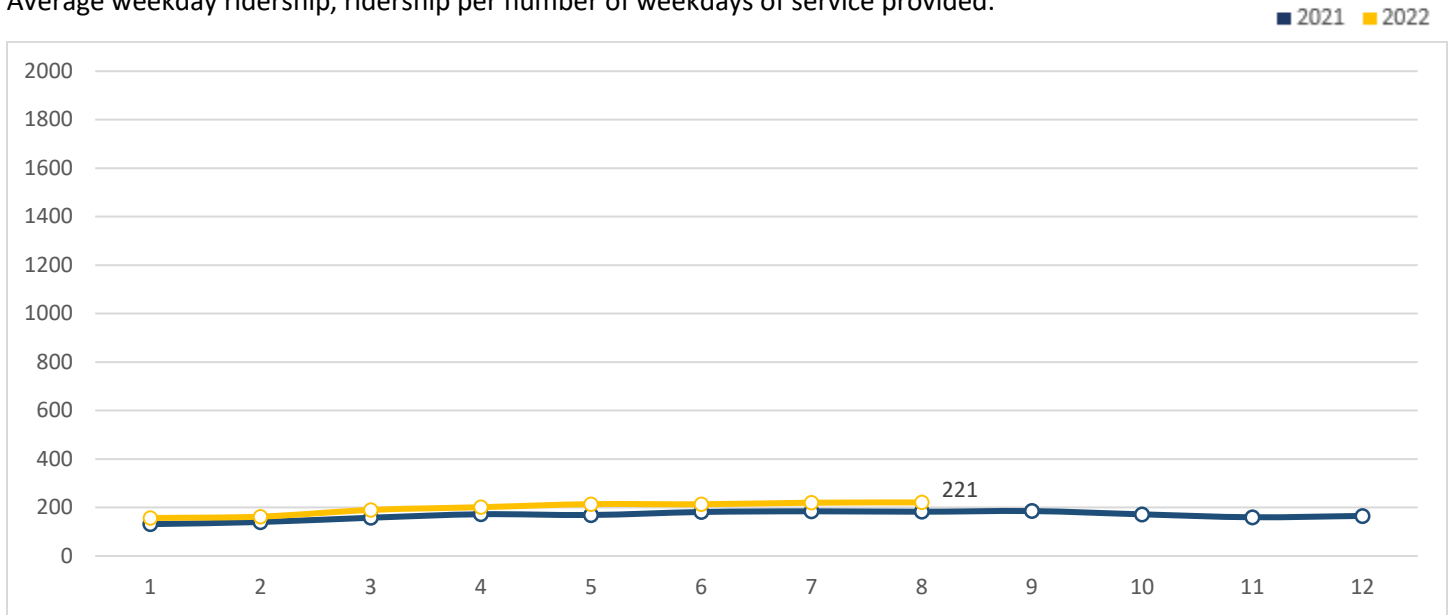
Productivity, boarding's per hour of service provided.



Route 65

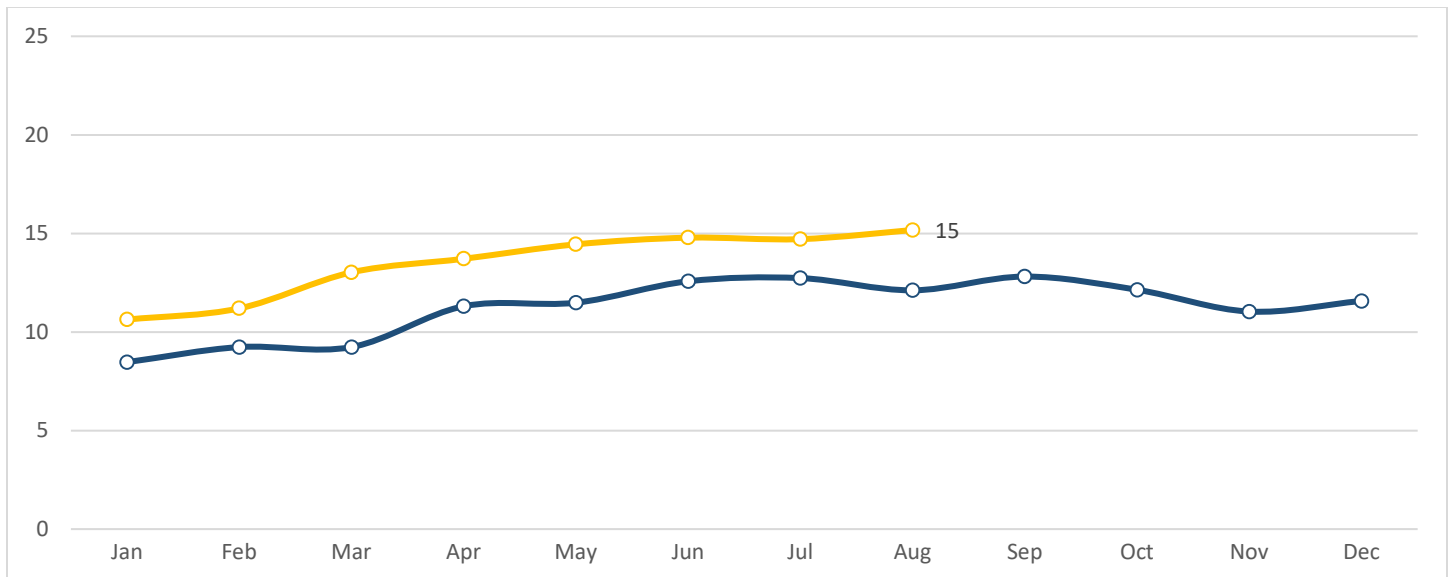
Ridership

Average weekday ridership, ridership per number of weekdays of service provided.



Productivity

Productivity, boarding's per hour of service provided.

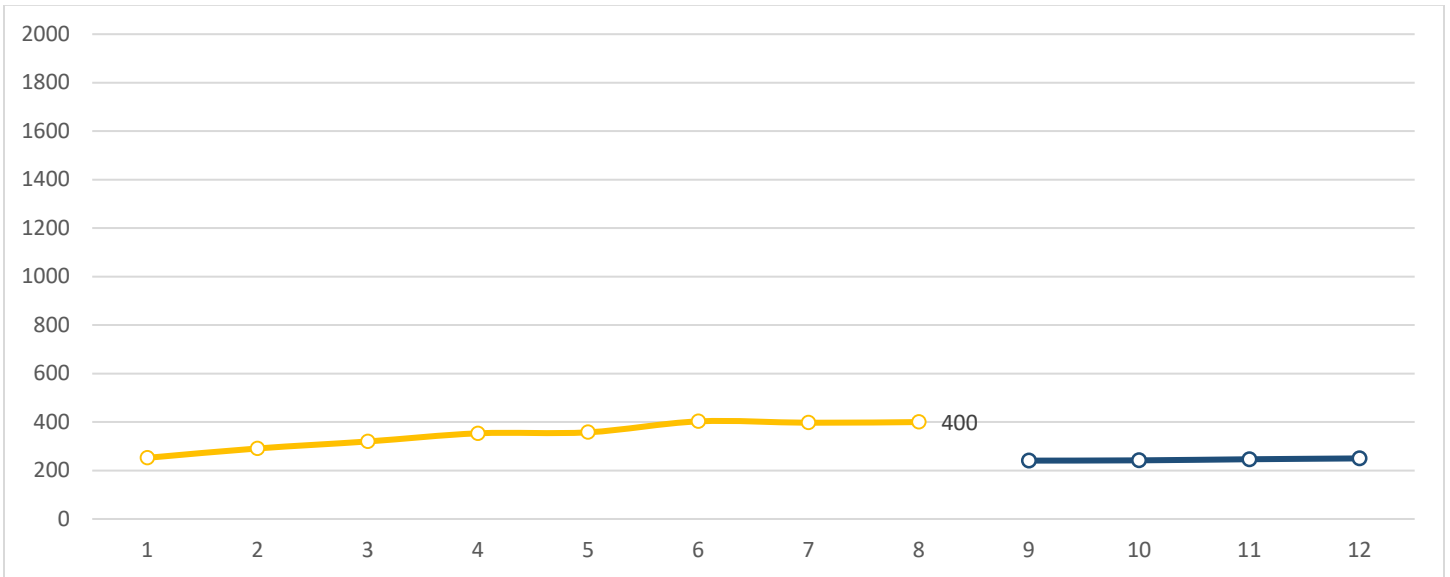


Route 85

Ridership

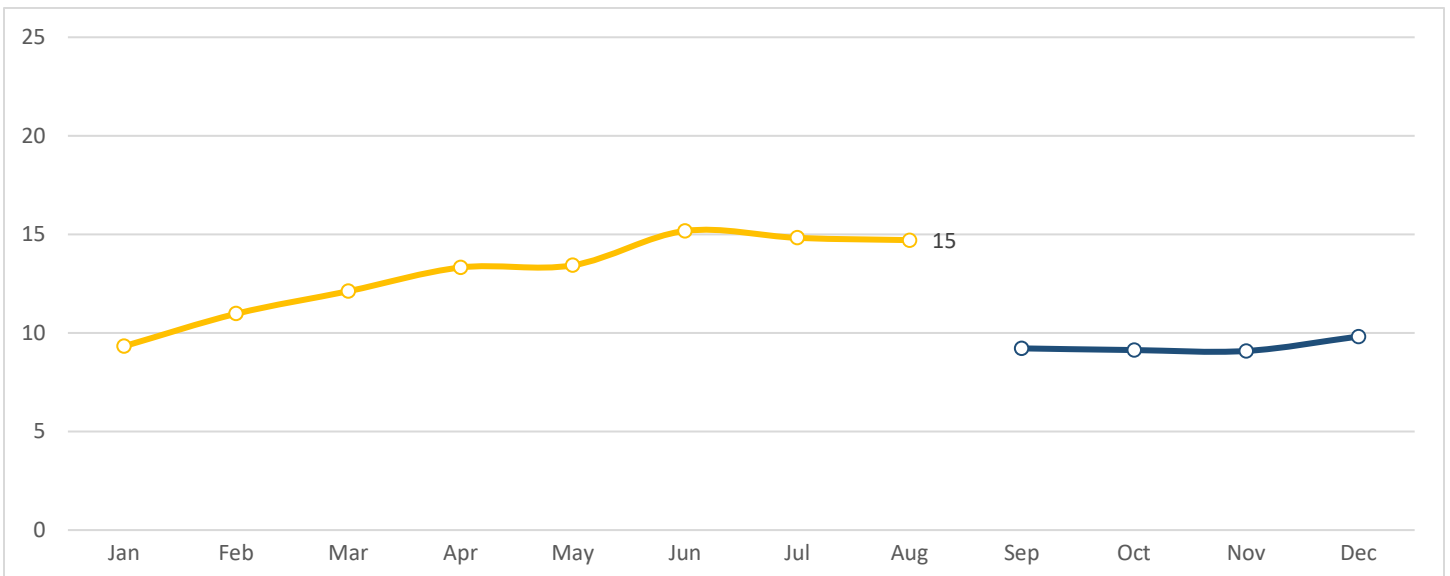
Average weekday ridership, ridership per number of weekdays of service provided.

■ 2021 ■ 2022



Productivity

Productivity, boarding's per hour of service provided.



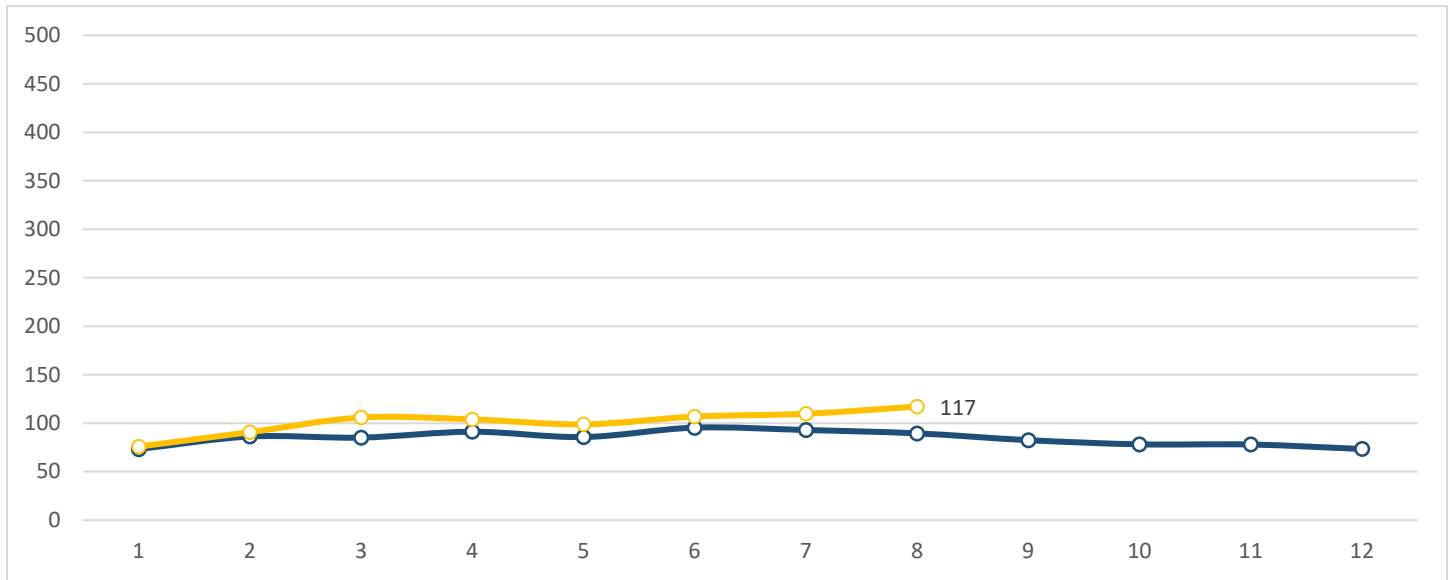
Neighborhood Routes, 30 or 60 Min Peak Frequency

Route 21

Ridership

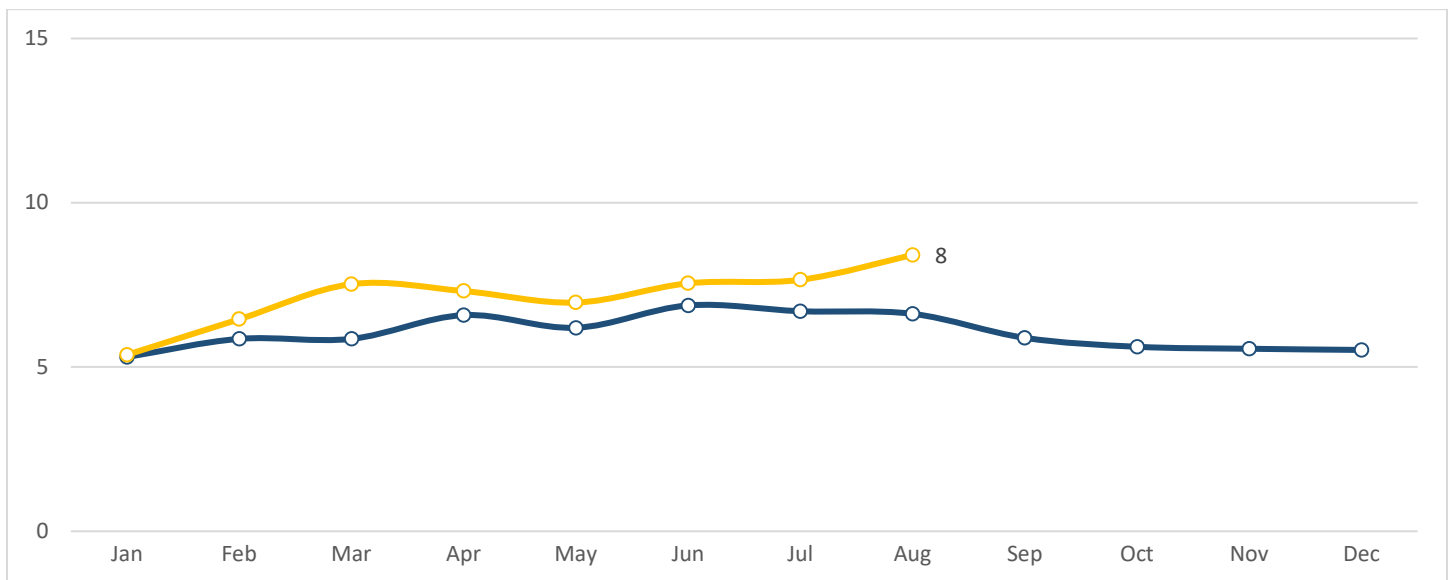
Average weekday ridership, ridership per number of weekdays of service provided.

■ 2021 ■ 2022



Productivity

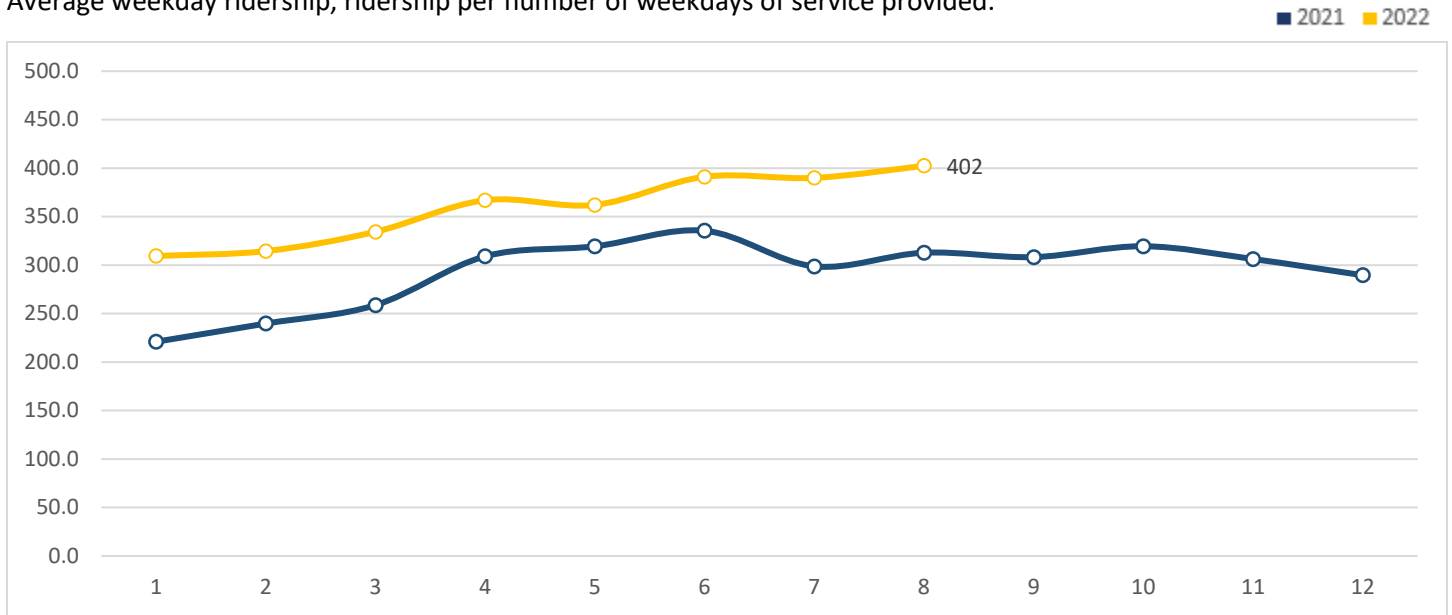
Productivity, boarding's per hour of service provided.



Route 31

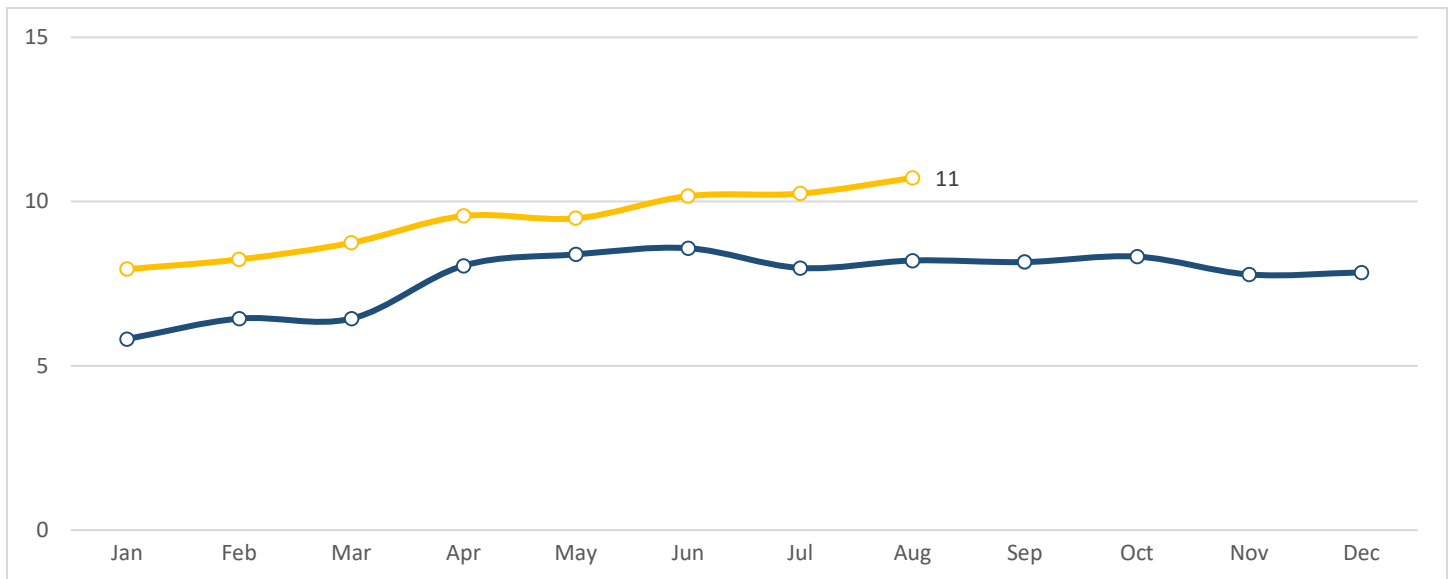
Ridership

Average weekday ridership, ridership per number of weekdays of service provided.



Productivity

Productivity, boarding's per hour of service provided.

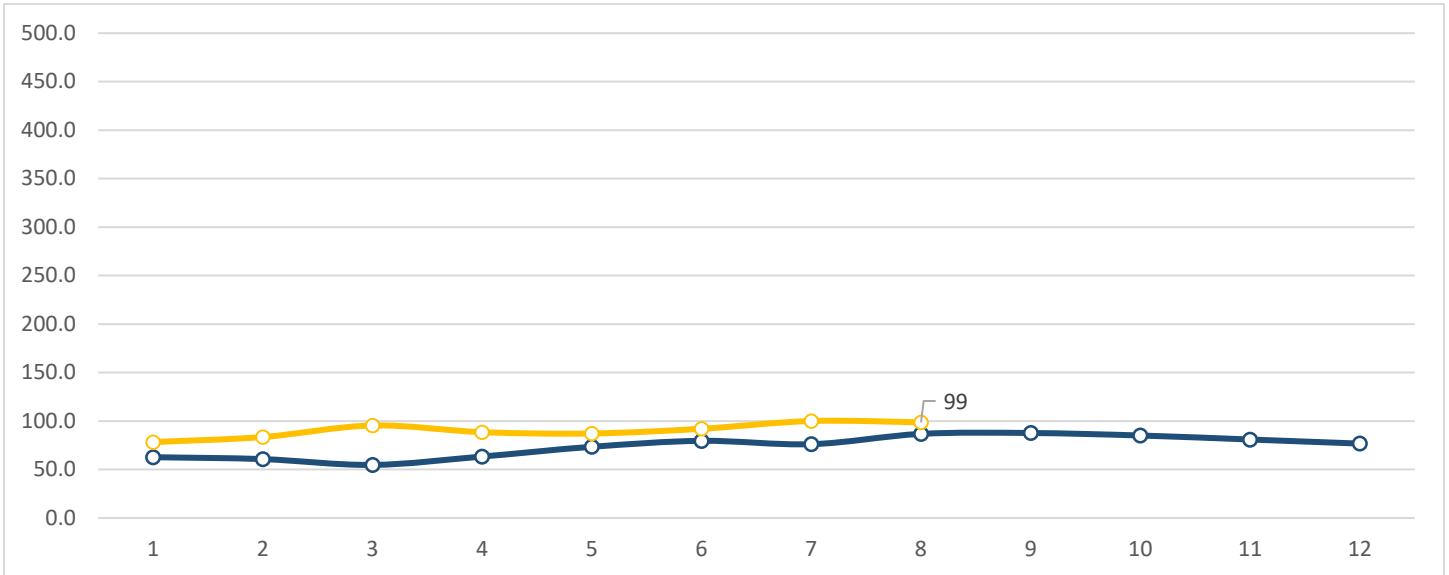


Route 11

Ridership

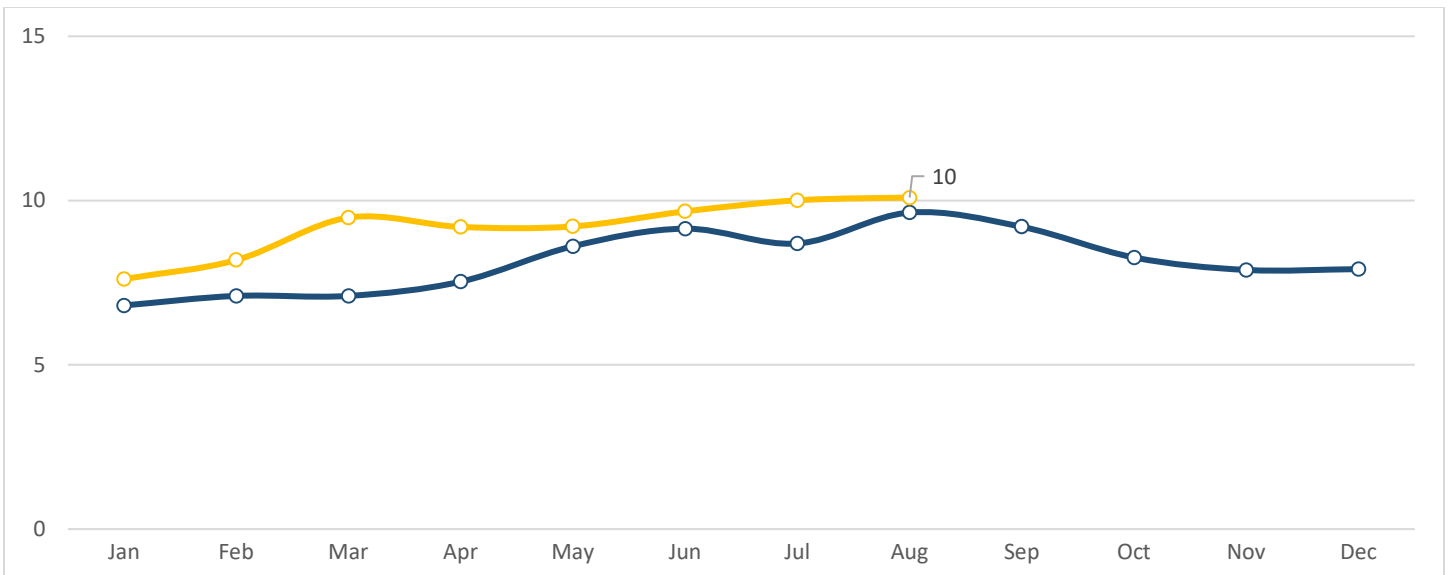
Average weekday ridership, ridership per number of weekdays of service provided.

■ 2021 ■ 2022



Productivity

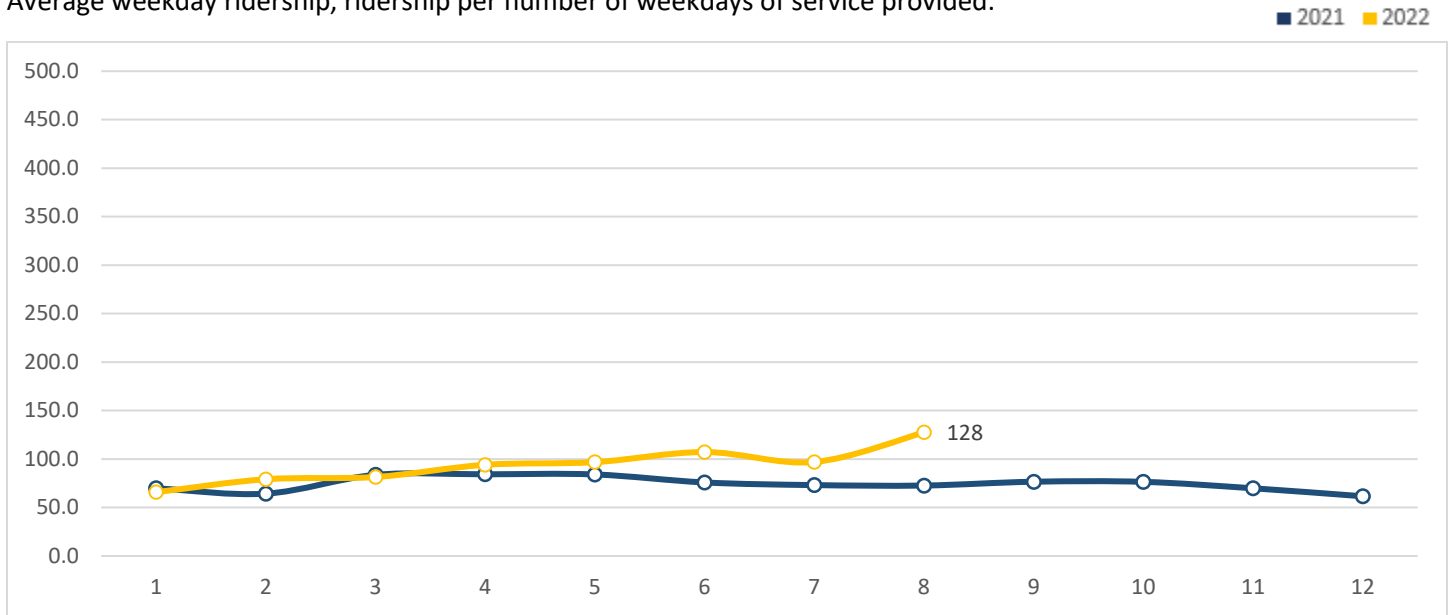
Productivity, boarding's per hour of service provided.



Route 41

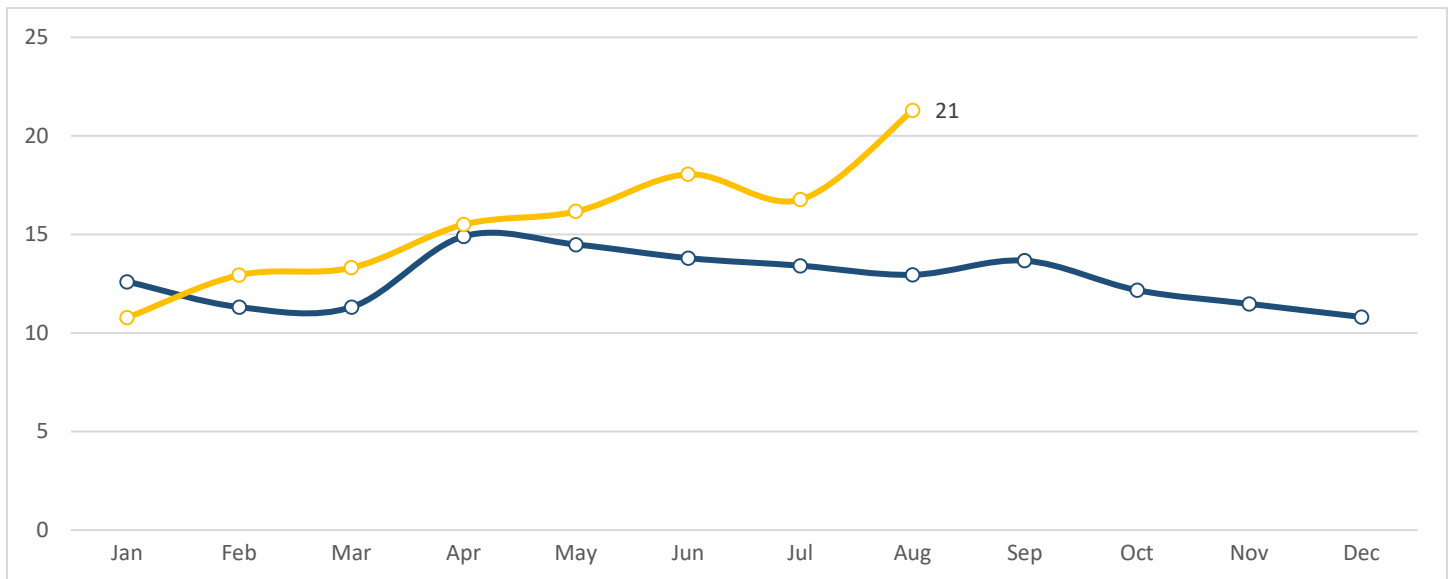
Ridership

Average weekday ridership, ridership per number of weekdays of service provided.



Productivity

Productivity, boarding's per hour of service provided.



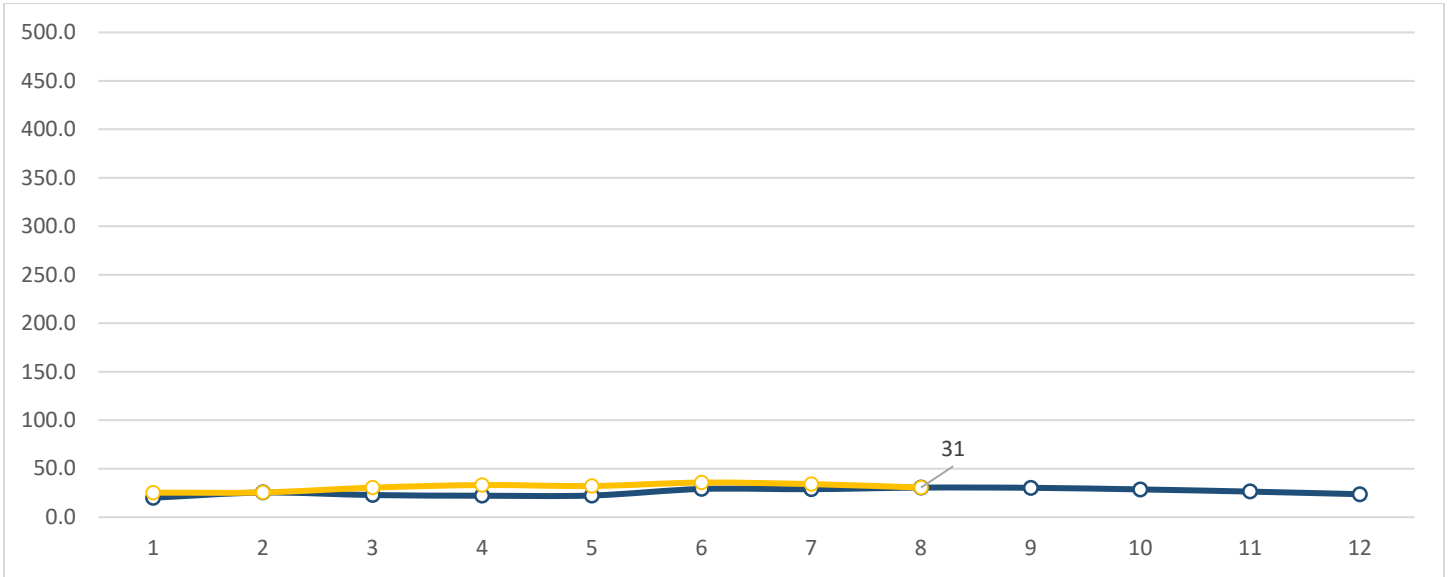
Commuter Routes, Rush Hour Service

Route 91

Ridership

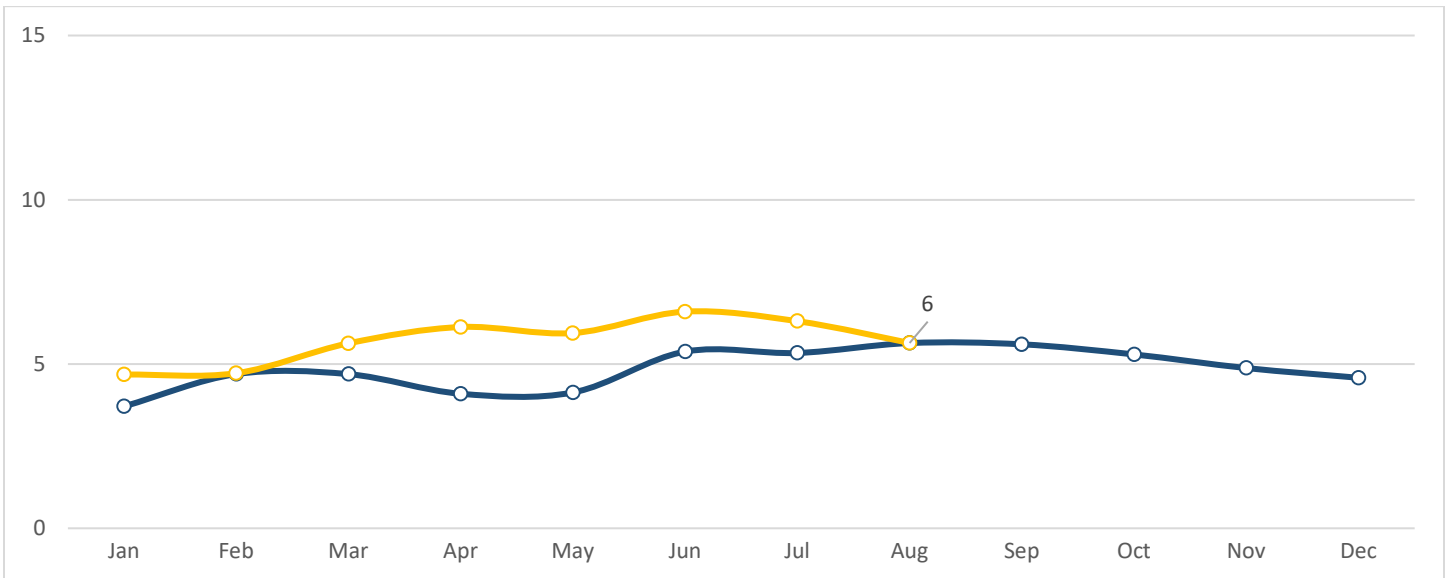
Average weekday ridership, ridership per number of weekdays of service provided.

2021 2022



Productivity

Productivity, boarding's per hour of service provided.

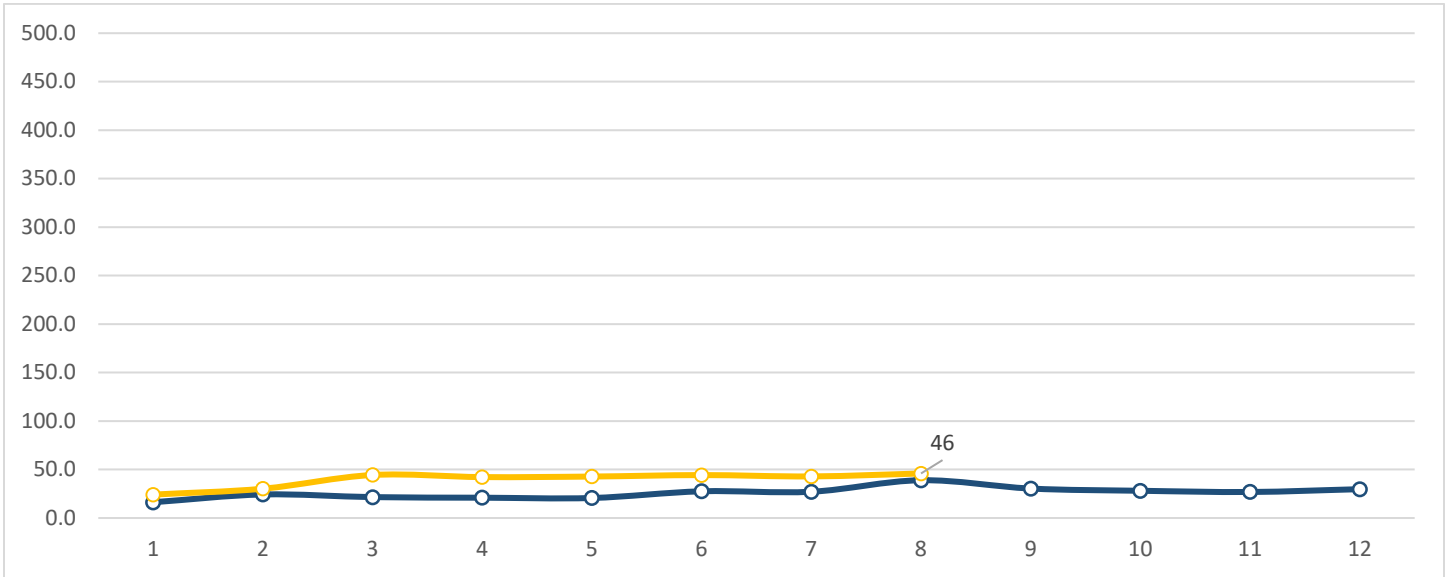


Route 92

Ridership

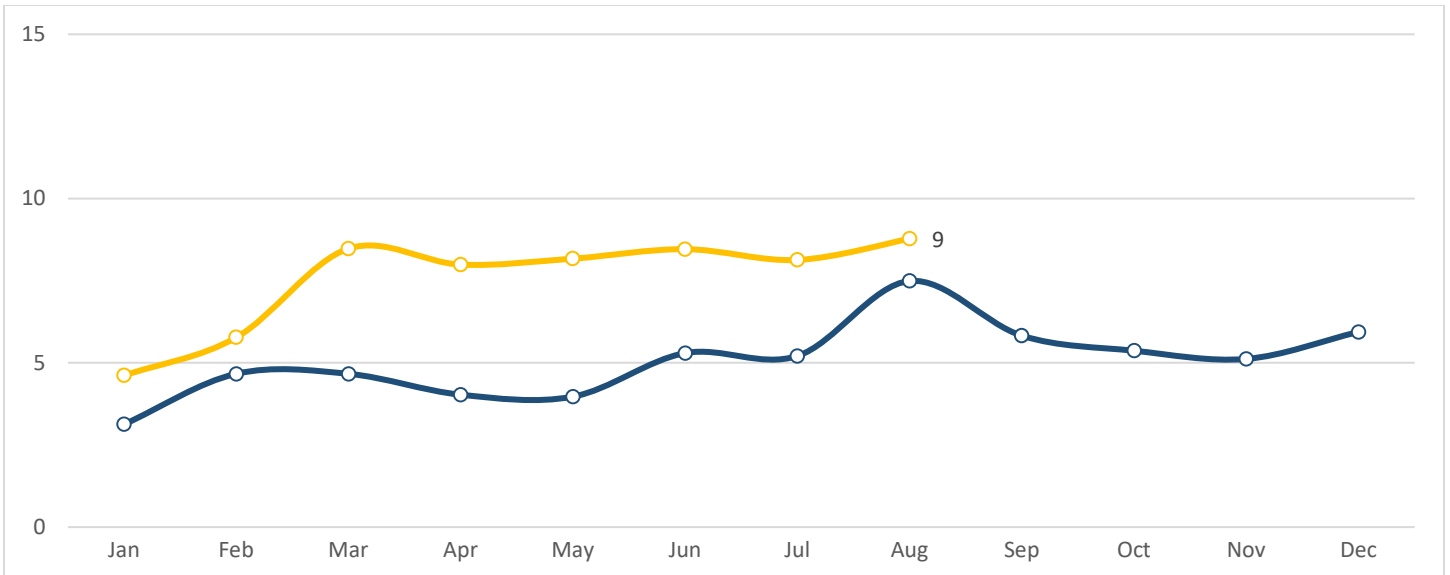
Average weekday ridership, ridership per number of weekdays of service provided.

■ 2021 ■ 2022

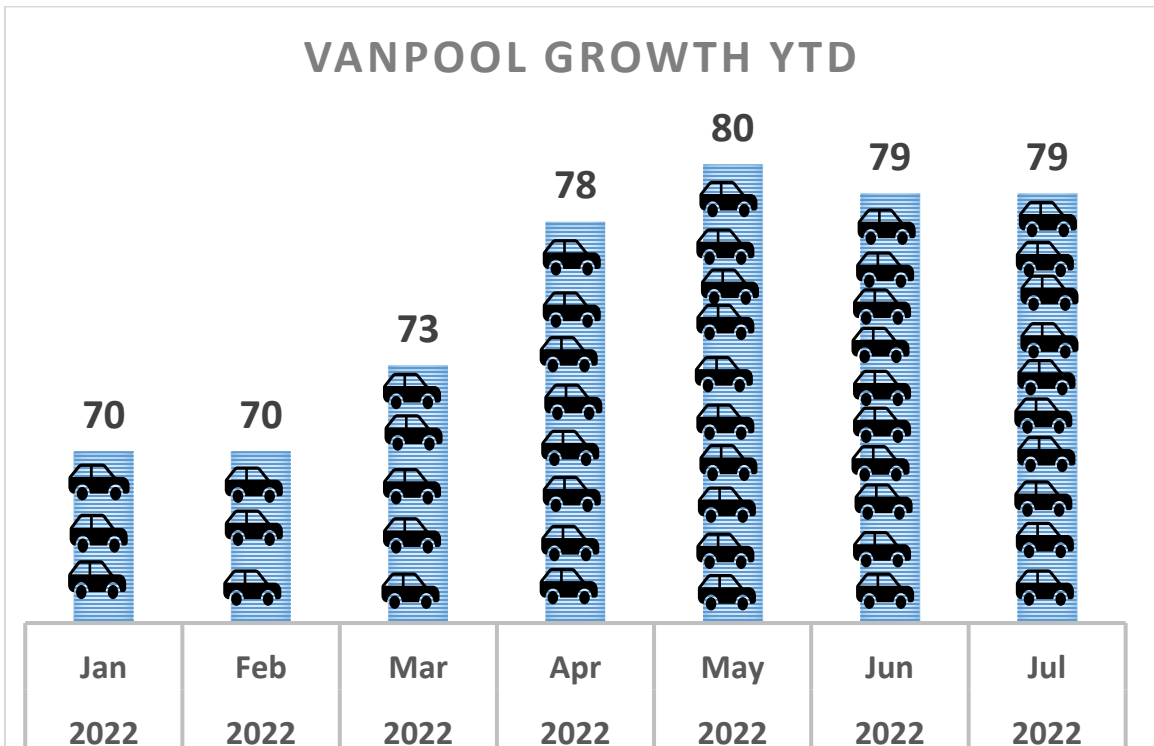


Productivity

Productivity, boarding's per hour of service provided.



September 8 PTAB Meeting RideShare Report





July 2022, about 486,150 (LBS.) CO2 emissions were reduced!