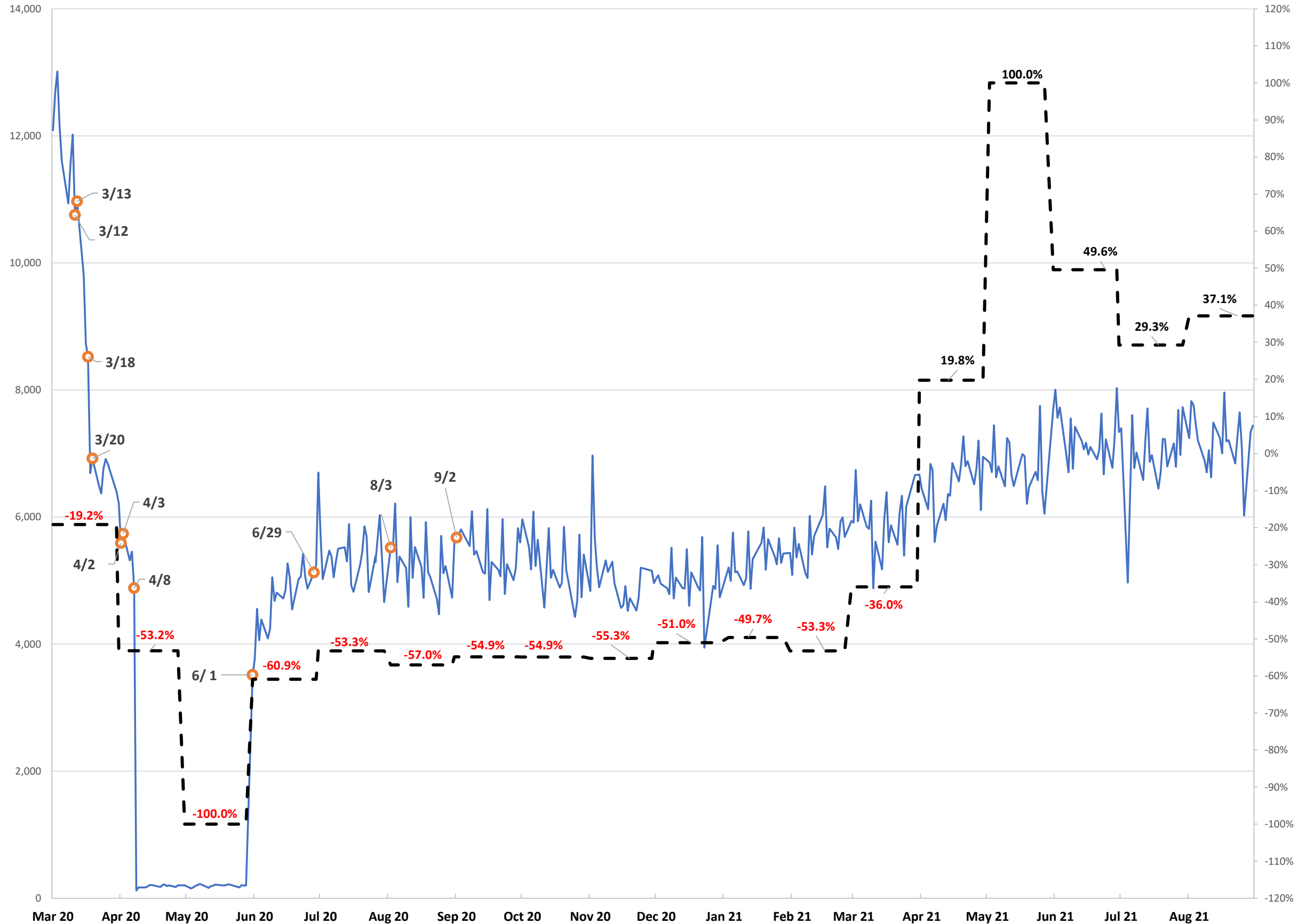




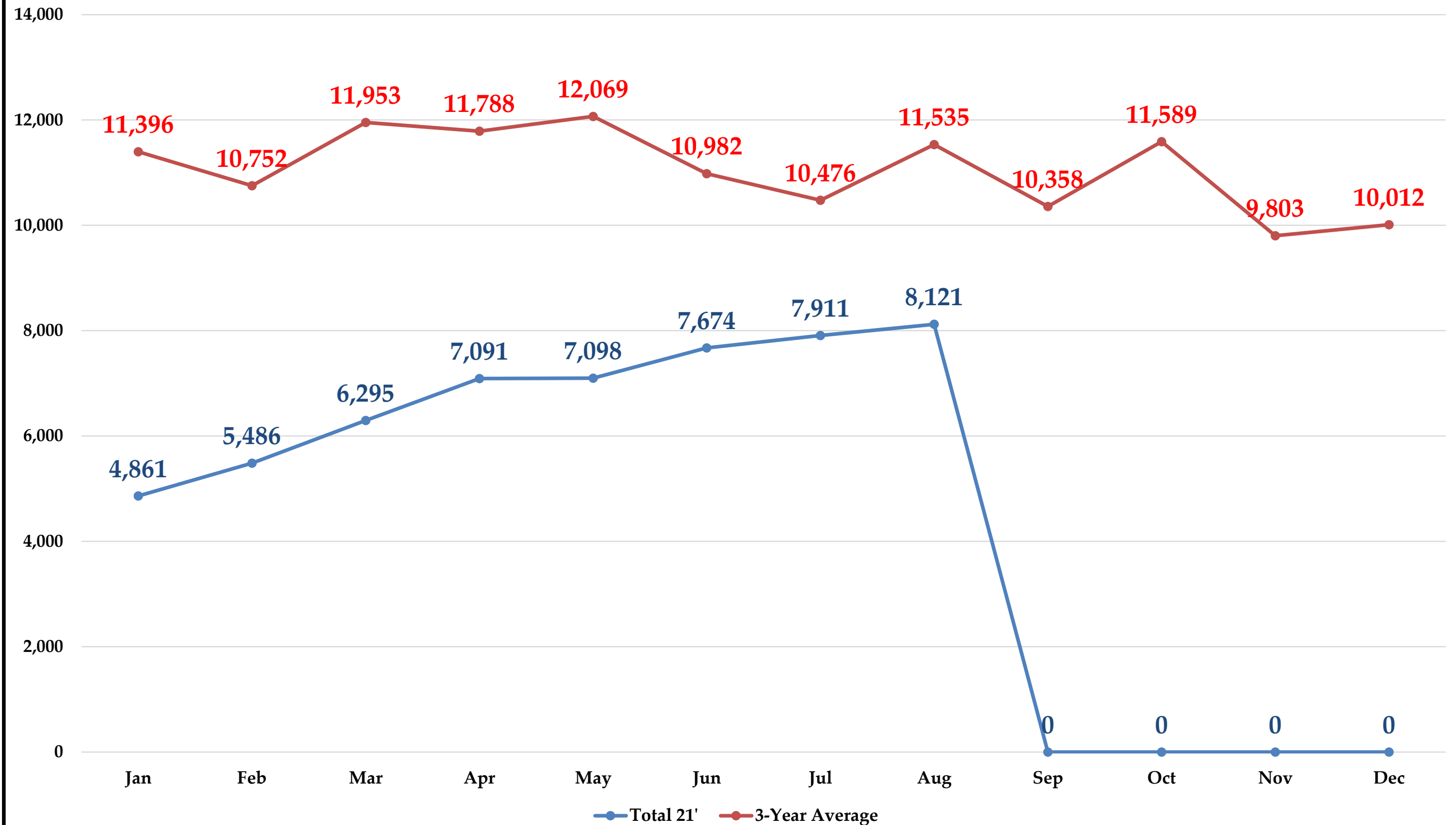
Average Weekday Ridership During COVID-19



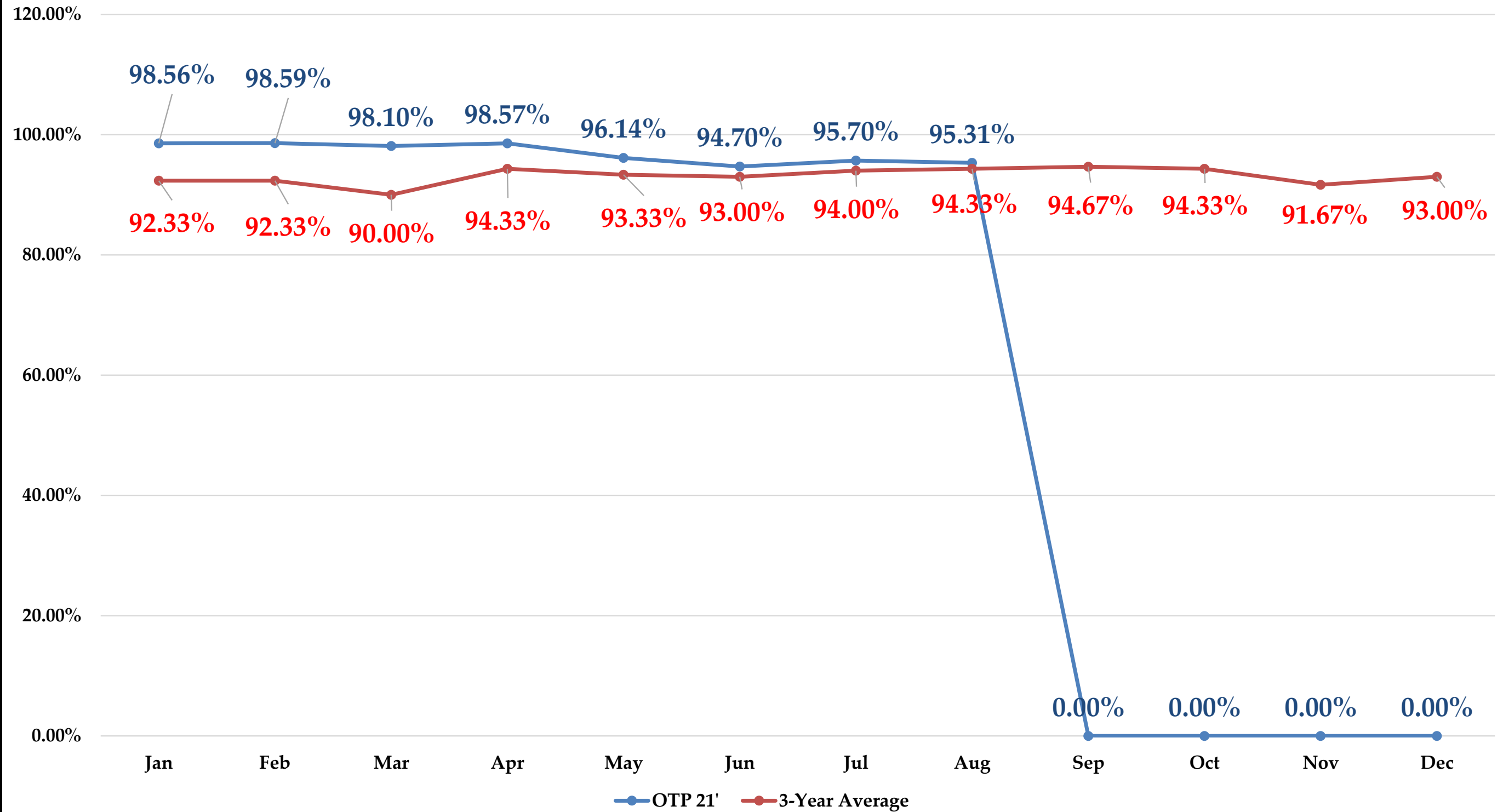
— Total Weekday Ridership ● Event - - - Percent Change from Prior year's weekday average

- 3/12** - Muni declares a civil emergency in response to the COVID-19 outbreak. ASD closes all schools for an extra week.
- 3/13** - National emergency declared. State of Alaska issues Health Mandate 001. Visitation at State Institutes, Non-Contact Student Days at Schools. Muni closes all municipal libraries and civic, cultural, and recreational facilities to the public until March 30.
- 3/18** - At 3 PM People Mover bus capacity limited to nine riders. People Mover and AnchorRIDES provided free of charge. Downtown Transit Center lobby and Customer Service closed.
- 3/20** - Mayor announces Emergency Order to "Hunker Down."
- 4/2** - 4-passenger limit takes effect for Routes 11, 21, 31, 41, & 91 to allow for additional space for social distancing. These routes are operated with a smaller bus compared to the other routes.
- 4/3** - People Mover announces that they will transition to Demand-Based Service transportation on 4/8 at midnight until further notice.
- 4/8** - People Mover transitions to Demand-Based service at midnight.
- 6/1** - People Mover resumes regular bus service, with rider limits in place. 9 riders per 40' bus, and 4 riders per 22' bus. Cloth face masks recommended.
- 6/29** - In accordance with the emergency order EO-13, cloth face masks will be required to ride People Mover starting today. Rider limits are also increased to 18 riders per 40' bus, and 6 riders per 22' bus.
- 8/3** - Per EO-15, current rider limits are set at 14 riders on 40-foot People Mover buses, and 4 riders on the 22-foot buses.
- 9/2** - The rider limit for the 22' bus increases to six riders. The 40' buses remain at a 14 rider limit.

AnchoRIDES 2021 Ridership



2021 AnchorRIDES On-Time Performance 15min +/-





RideShare Update for September 9, 2021 PTAB

