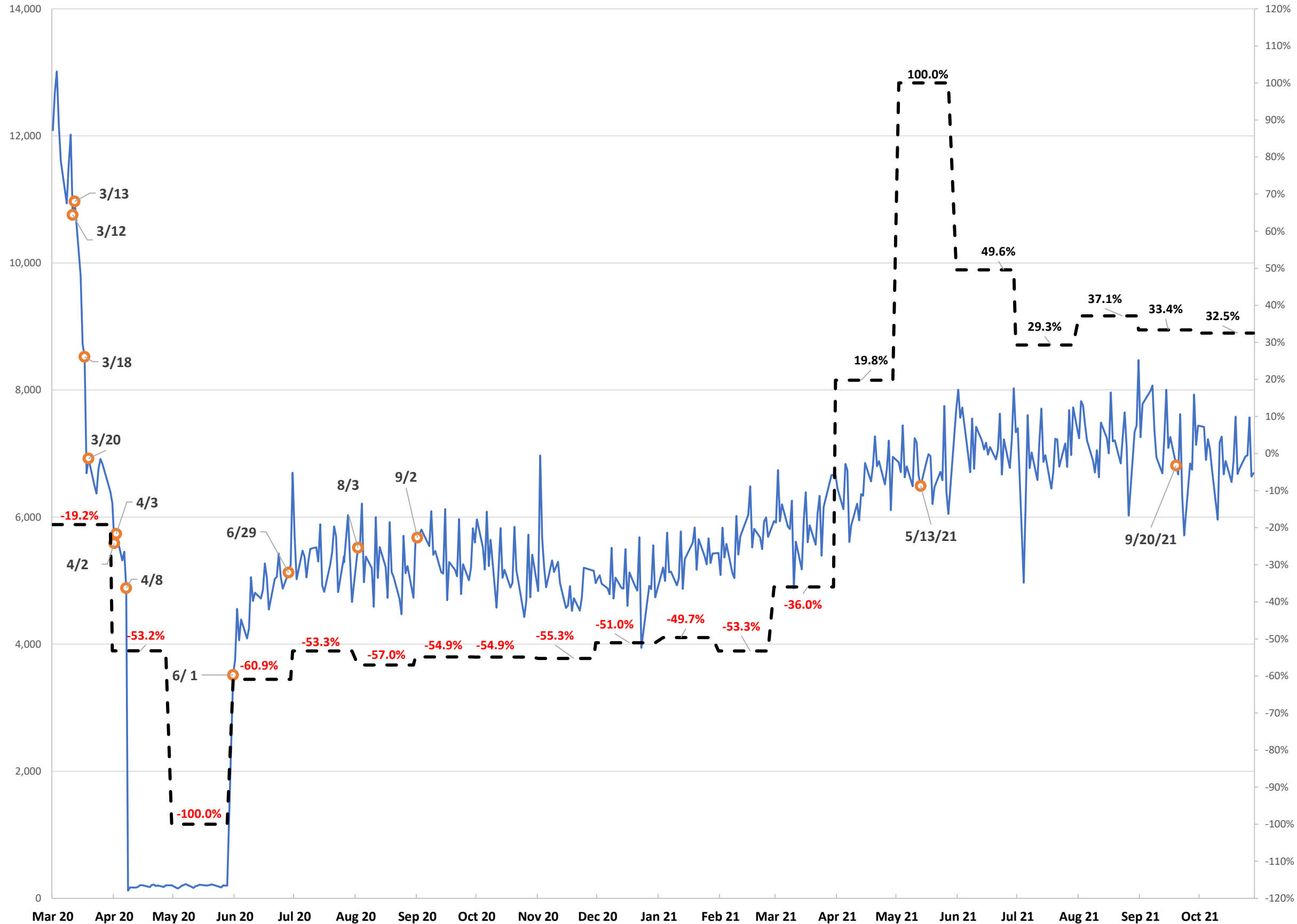




Average Weekday Ridership During COVID-19



— Total Weekday Ridership ● Event - - - Percent Change from Prior year's weekday average

3/12 - Muni declares a civil emergency in response to the COVID-19 outbreak. ASD closes all schools for an extra week.

3/13 - National emergency declared. State of Alaska issues Health Mandate 001. Visitation at State Institutes, Non-Contact Student Days at Schools. Muni closes all municipal libraries and civic, cultural, and recreational facilities to the public until March 30.

3/18 - At 3 PM People Mover bus capacity limited to nine riders. People Mover and AnchorRIDES provided free of charge. Downtown Transit Center lobby and Customer Service closed.

3/20 - Mayor announces Emergency Order to "Hunker Down."

4/2 - 4-passenger limit takes effect for Routes 11, 21, 31, 41, & 91 to allow for additional space for social distancing. These routes are operated with a smaller bus compared to the other routes.

4/3 - People Mover announces that they will transition to Demand-Based Service transportation on 4/8 at midnight until further notice.

4/8 - People Mover transitions to Demand-Based service at midnight.

6/1 - People Mover resumes regular bus service, with rider limits in place. 9 riders per 40' bus, and 4 riders per 22' bus. Cloth face masks recommended.

6/29 - In accordance with the emergency order EO-13, cloth face masks will be required to ride People Mover starting today. Rider limits are also increased to 18 riders per 40' bus, and 6 riders per 22' bus.

8/3 - Per EO-15, current rider limits are set at 14 riders on 40-foot People Mover buses, and 4 riders on the 22-foot buses.

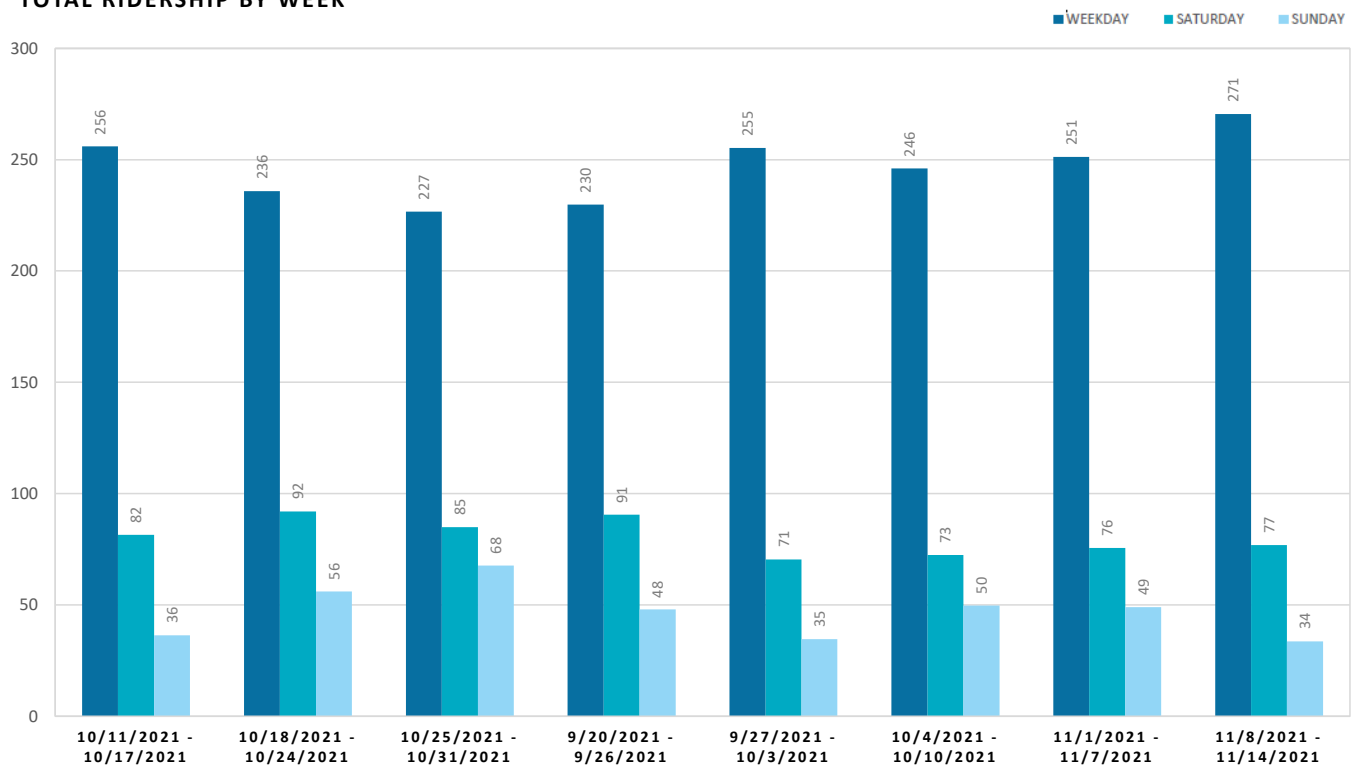
9/2 - The rider limit for the 22' bus increases to six riders. The 40' buses remain at a 14 rider limit.

5/13/21 - Rider limit lifted, buses may operate at full capacity.

9/20/21 - Service Change and implementation of the new Route 85.

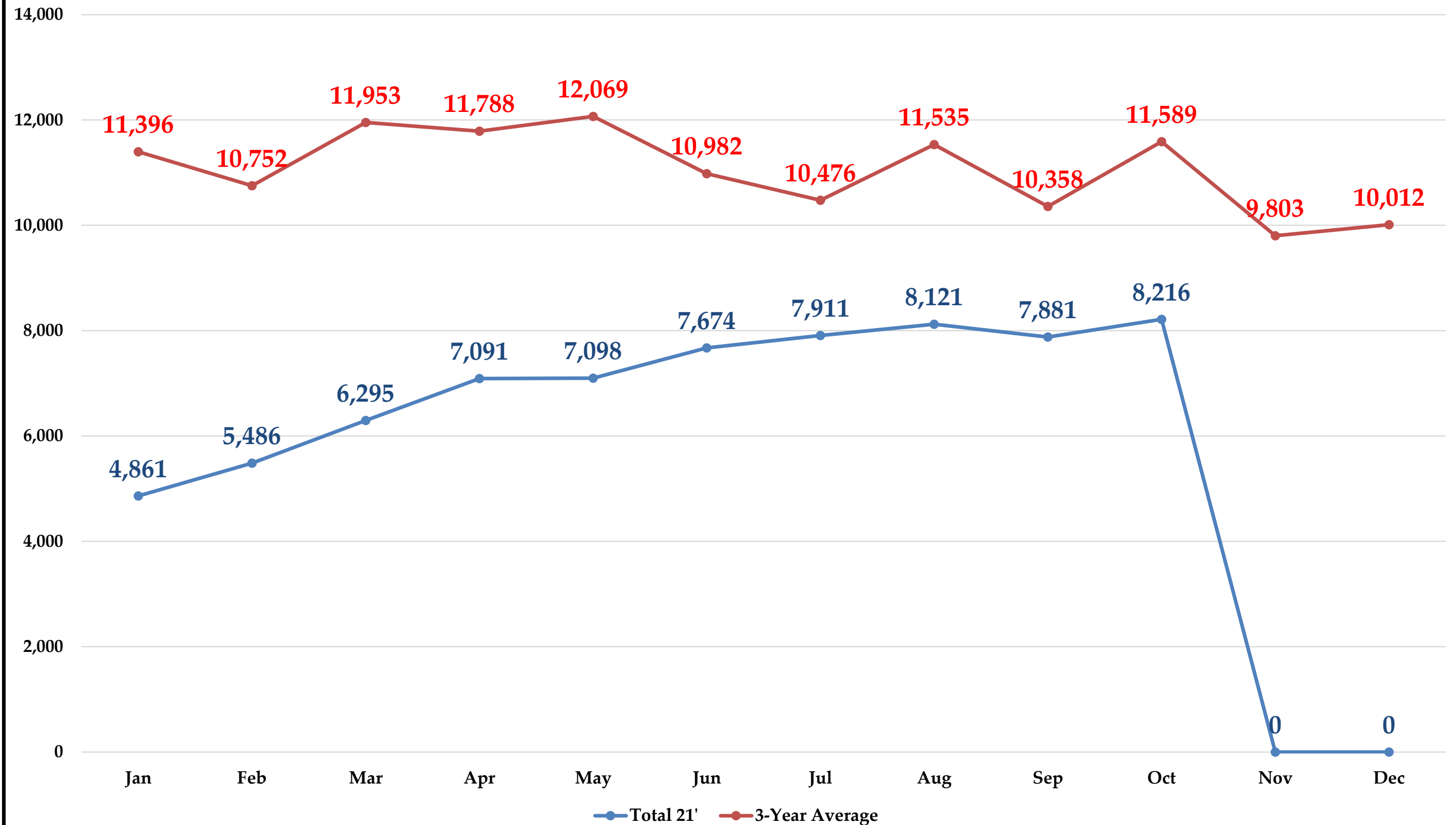
ROUTE 85

TOTAL RIDERSHIP BY WEEK

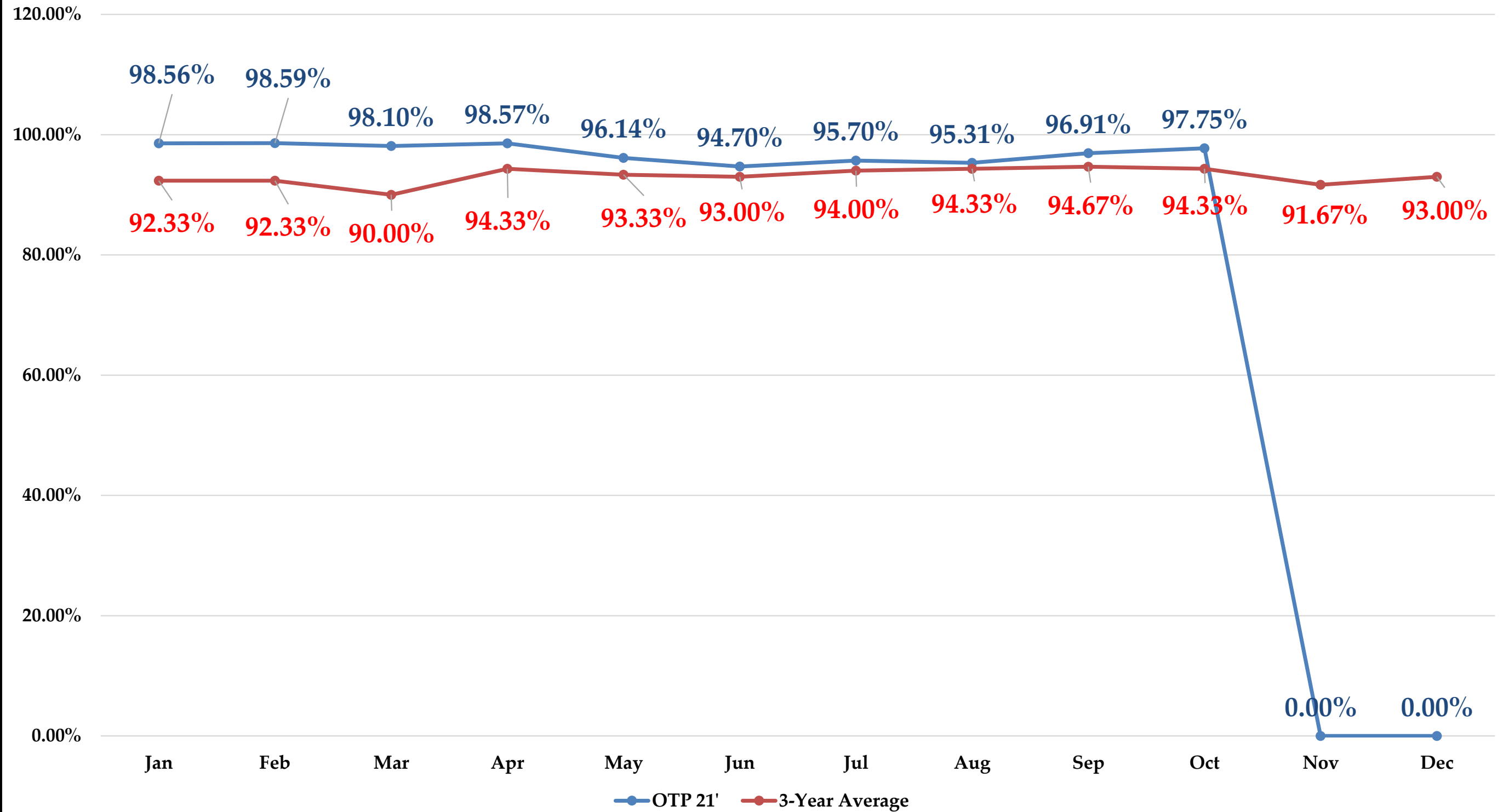


Source: People Mover

AnchoRIDES 2021 Ridership



2021 AnchorRIDES On-Time Performance 15min +/-





RideShare Update for November 18, 2021 PTAB

