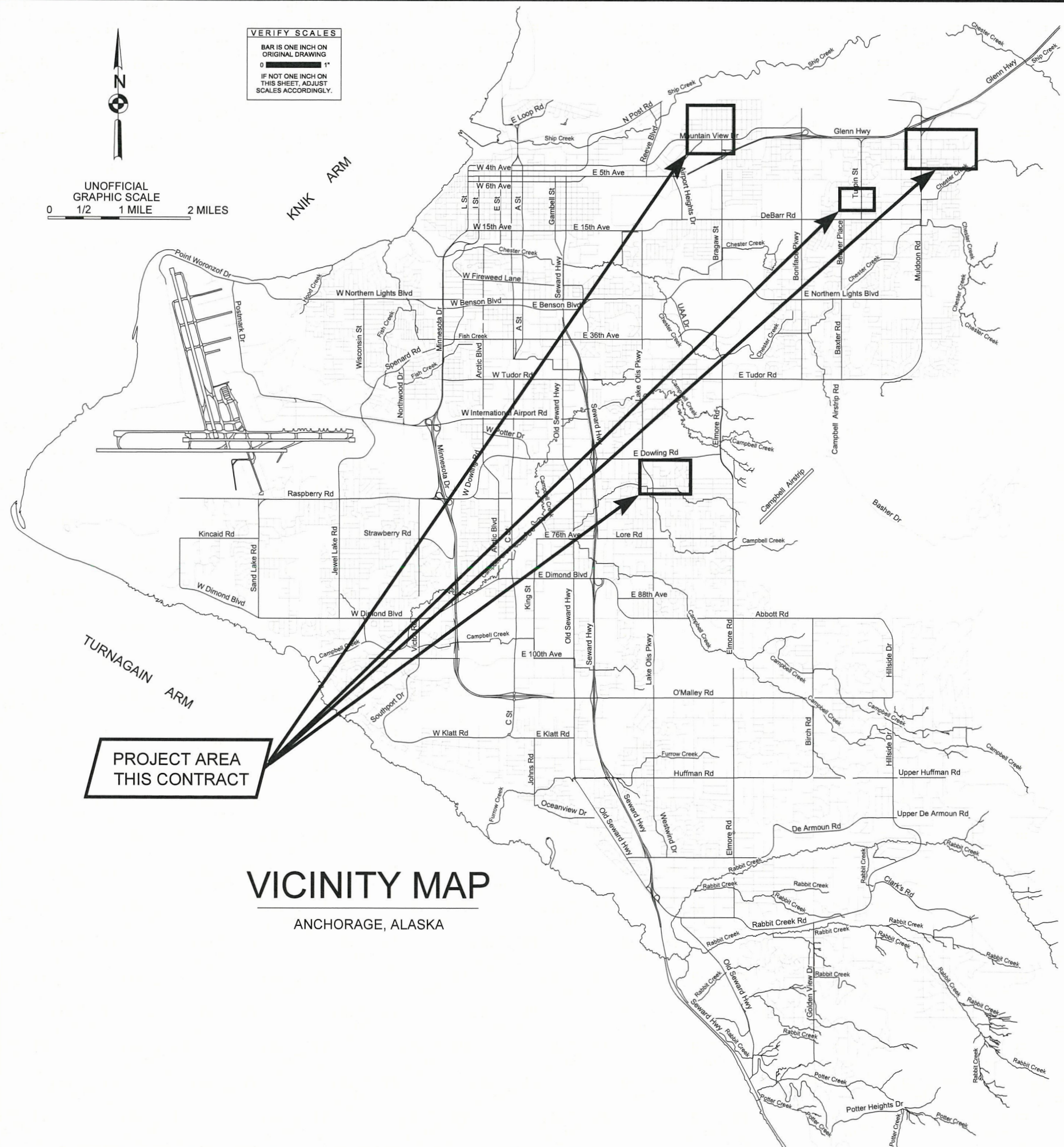


**VERIFY SCALES**  
 BAR IS ONE INCH ON ORIGINAL DRAWING  
 0 1" 1"  
 IF NOT ONE INCH ON THIS SHEET, ADJUST SCALES ACCORDINGLY.



**VICINITY MAP**  
 ANCHORAGE, ALASKA



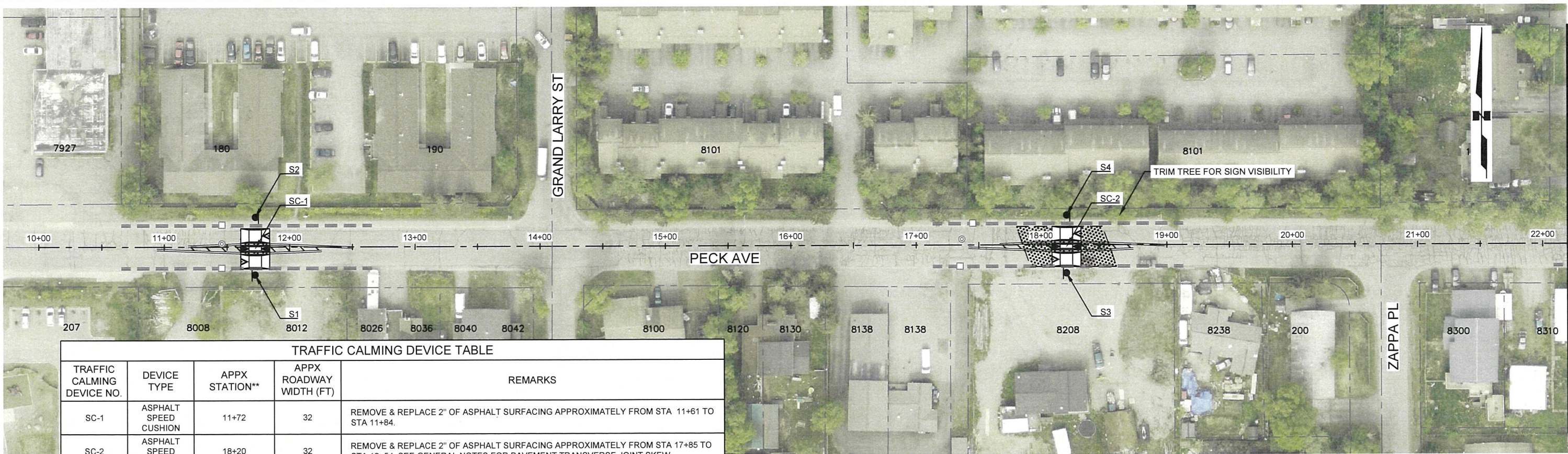
MUNICIPALITY OF ANCHORAGE  
 TRAFFIC ENGINEERING DEPARTMENT

EAST ANCHORAGE AREAWIDE  
 VERTICAL TRAFFIC CALMING

PROJECT NUMBER: 25-09

APPROVED BY:

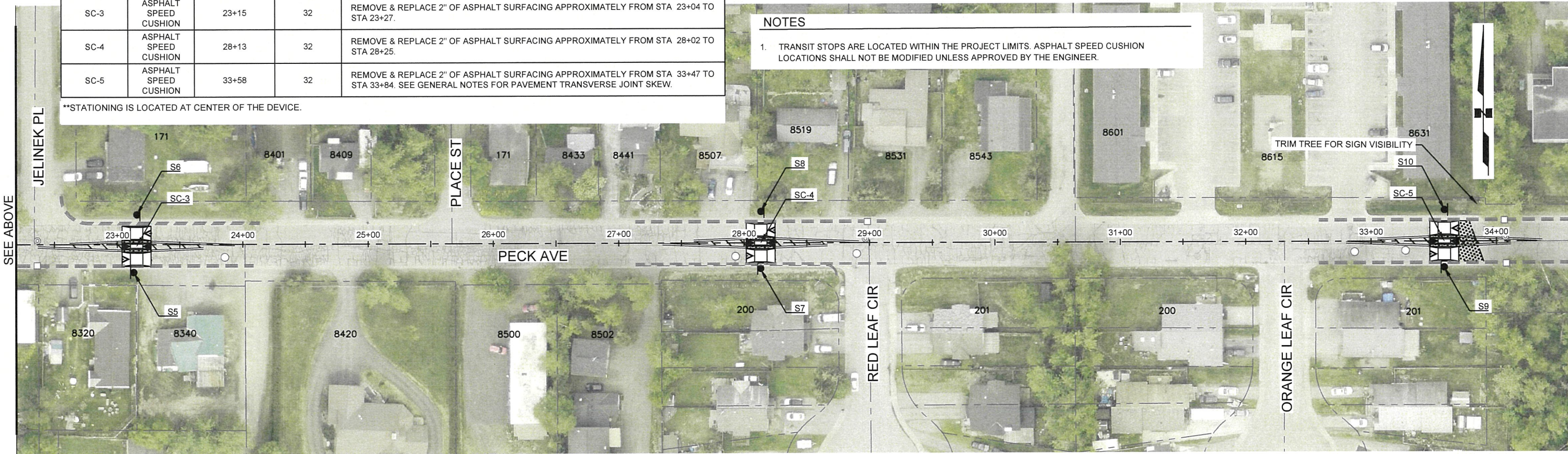
MELINDA T. KOHLHAAS, P.E.  
 MUNICIPAL ENGINEER



TRAFFIC CALMING DEVICE TABLE				
TRAFFIC CALMING DEVICE NO.	DEVICE TYPE	APPX STATION**	APPX ROADWAY WIDTH (FT)	REMARKS
SC-1	ASPHALT SPEED CUSHION	11+72	32	REMOVE & REPLACE 2" OF ASPHALT SURFACING APPROXIMATELY FROM STA 11+61 TO STA 11+84.
SC-2	ASPHALT SPEED CUSHION	18+20	32	REMOVE & REPLACE 2" OF ASPHALT SURFACING APPROXIMATELY FROM STA 17+85 TO STA 18+54. SEE GENERAL NOTES FOR PAVEMENT TRANSVERSE JOINT SKEW.
SC-3	ASPHALT SPEED CUSHION	23+15	32	REMOVE & REPLACE 2" OF ASPHALT SURFACING APPROXIMATELY FROM STA 23+04 TO STA 23+27.
SC-4	ASPHALT SPEED CUSHION	28+13	32	REMOVE & REPLACE 2" OF ASPHALT SURFACING APPROXIMATELY FROM STA 28+02 TO STA 28+25.
SC-5	ASPHALT SPEED CUSHION	33+58	32	REMOVE & REPLACE 2" OF ASPHALT SURFACING APPROXIMATELY FROM STA 33+47 TO STA 33+84. SEE GENERAL NOTES FOR PAVEMENT TRANSVERSE JOINT SKEW.

\*\*STATIONING IS LOCATED AT CENTER OF THE DEVICE.

**NOTES**  
 1. TRANSIT STOPS ARE LOCATED WITHIN THE PROJECT LIMITS. ASPHALT SPEED CUSHION LOCATIONS SHALL NOT BE MODIFIED UNLESS APPROVED BY THE ENGINEER.

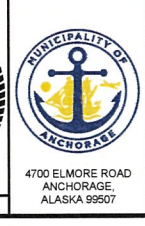
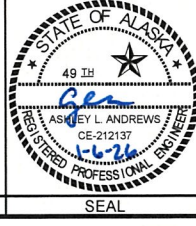


File: H:\Jobs\05-002 MOA Traffic Engineering\Term\08-Northeast Anchorage Area\Wide Vertical Traffic Calming\CAD\Drawings\2502\_08\_R1-R4\_StreetPlan.dwg PLOT DATE: 1/6/2026 11:55:19 AM

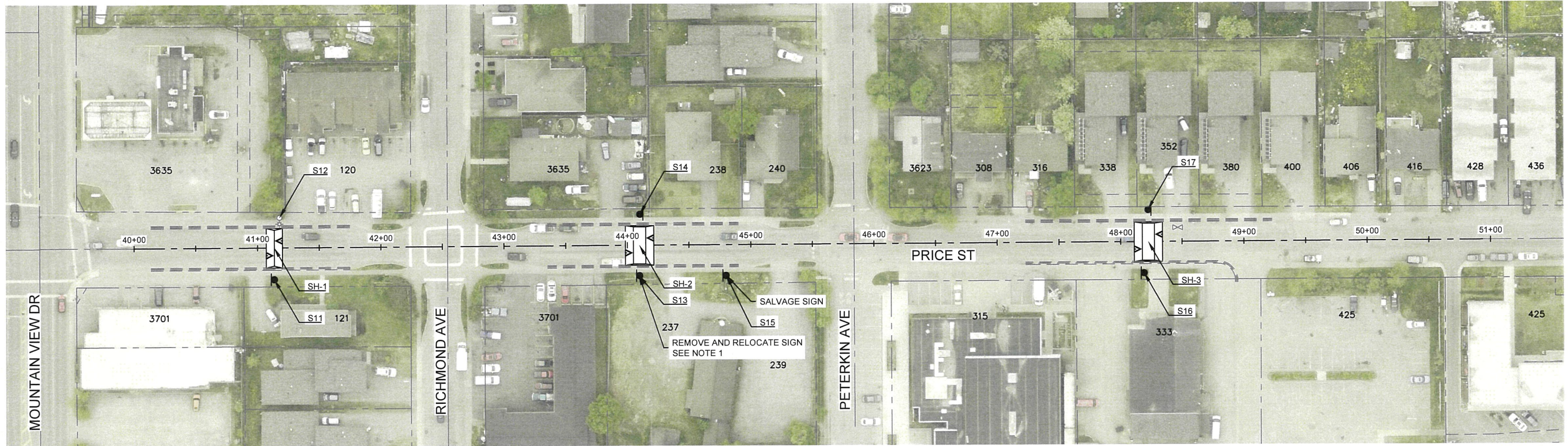
RECORD DRAWING  
 CONTRACTOR: \_\_\_\_\_  
 BY: \_\_\_\_\_  
 TITLE: \_\_\_\_\_  
 DATE: \_\_\_\_\_  
 THIS WILL SERVE TO CERTIFY THAT THESE RECORD DRAWINGS ARE A TRUE AND ACCURATE REPRESENTATION OF THE PROJECT AS CONSTRUCTED.

GRAPHIC SCALE						
FIELD BOOKS	BM NO.	LOCATION	ELEV.	REV.	DATE	DESCRIPTION
MOA BOOK NO	-	-	-	-	-	-
BASIS OF DATUM						
GAAB 1972 ADJUST	-	-	-	-	-	-
VERTICAL DATUM						
REVISIONS						

**HDL ENGINEERING**  
 CONSULTANTS  
 CIVIL ENGINEERING  
 SURVEYING  
 GEOTECHNICAL  
 ENVIRONMENTAL  
 3335 Arctic Blvd., Suite 100  
 Anchorage, AK 99503  
 (907) 564-2120  
 www.HDLalaska.com  
 AECL861



TRAFFIC ENGINEERING DEPARTMENT			
25-09 EAST ANCHORAGE AREA WIDE VERTICAL TRAFFIC CALMING			
<b>STREET PLAN</b>			
PECK AVE			
SCALE: HOR: 1"=40'	DATE: JAN, 2026	STATUS: STATUS	R1
VER: NA	GRID: SW1135, SW1241, SW1339, SW2034	SHEET	of R4



TRAFFIC CALMING DEVICE TABLE				
TRAFFIC CALMING DEVICE NO.	DEVICE TYPE	APPX STATION**	APPX ROADWAY WIDTH (FT)	REMARKS
SH-1	ASPHALT SINUSOIDAL SPEED HUMP	41+13	32	REMOVE & REPLACE 2" OF ASPHALT SURFACING APPROXIMATELY FROM STA 41+07 TO STA 41+20.
SH-2	ASPHALT FLAT TOP SPEED HUMP	44+10	32	REMOVE & REPLACE 2" OF ASPHALT SURFACING APPROXIMATELY FROM STA 43+98 TO STA 44+21.
SH-3	ASPHALT FLAT TOP SPEED HUMP	48+23	32	REMOVE & REPLACE 2" OF ASPHALT SURFACING APPROXIMATELY FROM STA 48+11 TO STA 48+34.

\*\*STATIONING IS LOCATED AT CENTER OF THE DEVICE.

**NOTES**

1. REMOVE AND RELOCATE EXISTING SIGN. SEE SIGN SUMMARY TABLE ON SHEET S3 FOR LOCATION.

File: H:\pds\05-002 MOA Traffic Engineering\Term\08-Northeast Anchorage Area-wide Vertical Traffic Calming\CAD\Drawings\25002\_08\_R1-R4\_Street-Plan.dwg PLOT DATE: 1/5/2026 4:32:27 PM

RECORD DRAWING

CONTRACTOR: \_\_\_\_\_

BY: \_\_\_\_\_

TITLE: \_\_\_\_\_

DATE: \_\_\_\_\_

THIS WILL SERVE TO CERTIFY THAT THESE RECORD DRAWINGS ARE A TRUE AND ACCURATE REPRESENTATION OF THE PROJECT AS CONSTRUCTED.

<p>80 40 0 40 80</p> <p>GRAPHIC SCALE</p>							
FIELD BOOKS	BM NO.	LOCATION	ELEV.	REV	DATE	DESCRIPTION	BY
MOA BOOK NO	-	-	-	-	-	-	-
BASIS OF DATUM							
GAAB 1972 ADJUST							
VERTICAL DATUM							
REVISIONS							

**HDL ENGINEERING**  
Consultants

CIVIL ENGINEERING  
SURVEYING  
GEOTECHNICAL  
ENVIRONMENTAL

3335 Arctic Blvd., Suite 100  
Anchorage, AK 99503  
(907) 564-2120  
www.HDLalaska.com  
AECL861

CONSULTANT

STATE OF ALASKA  
49 TH  
ASHLEY L. ANDREWS  
CE-212137  
1-6-26  
REGISTERED PROFESSIONAL ENGINEER

SEAL

MUNICIPALITY OF ANCHORAGE  
4700 ELMORE ROAD  
ANCHORAGE, ALASKA 99507

TRAFFIC ENGINEERING DEPARTMENT

25-09 EAST ANCHORAGE AREA-WIDE VERTICAL TRAFFIC CALMING

**STREET PLAN**

PRICE ST

SCALE: HOR: 1"=40'	DATE: JAN, 2026	STATUS: STATUS:	R2 of R4
VER: NA	GRID: SW1135, SW1241, SW1339, SW2034		SHEET



TRAFFIC CALMING DEVICE TABLE				
TRAFFIC CALMING DEVICE NO.	DEVICE TYPE	APPX STATION**	APPX ROADWAY WIDTH (FT)	REMARKS
SH-4	ASPHALT SINUSOIDAL SPEED HUMP	60+81	26	REMOVE & REPLACE 2" OF ASPHALT SURFACING APPROXIMATELY FROM STA 60+75 TO STA 60+88.
SH-5	ASPHALT SINUSOIDAL SPEED HUMP	64+26	28	REMOVE & REPLACE 2" OF ASPHALT SURFACING APPROXIMATELY FROM STA 64+19 TO STA 64+32.

\*\*STATIONING IS LOCATED AT CENTER OF THE DEVICE.

File: H:\Jobs\25-002 MOA Traffic Engineering\Term08-Northeast Anchorage Area-wide Vertical Traffic Calming\CAD\Drawings\25002\_08\_R1-R4\_Street-Plan.dwg PLOT DATE: 1/26/2025 3:29:12 PM

RECORD DRAWING

CONTRACTOR: \_\_\_\_\_

BY: \_\_\_\_\_

TITLE: \_\_\_\_\_

DATE: \_\_\_\_\_

THIS WILL SERVE TO CERTIFY THAT THESE RECORD DRAWINGS ARE A TRUE AND ACCURATE REPRESENTATION OF THE PROJECT AS CONSTRUCTED.

GRAPHIC SCALE							
FIELD BOOKS	BM NO.	LOCATION	ELEV.	REV	DATE	DESCRIPTION	BY
MOA BOOK NO	-	-	-	-	-	-	-
BASIS OF DATUM		-	-	-	-	-	-
GAAB 1972 ADJUST		-	-	-	-	-	-
VERTICAL DATUM				REVISIONS			

**HDL ENGINEERING**  
Consultants

CIVIL ENGINEERING  
SURVEYING  
GEOTECHNICAL  
ENVIRONMENTAL

3335 Arctic Blvd., Suite 100  
Anchorage, AK 99503  
(907) 564-2120  
www.HDLalaska.com  
AECL861

CONSULTANT

SEAL

4700 ELMORE ROAD  
ANCHORAGE,  
ALASKA 99507

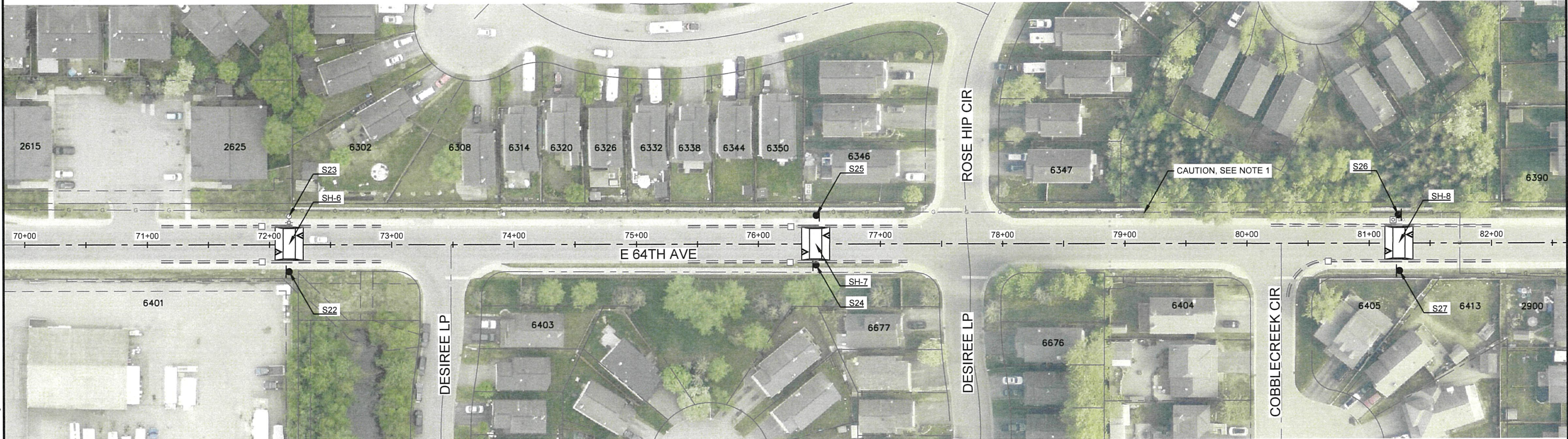
TRAFFIC ENGINEERING DEPARTMENT

25-09 EAST ANCHORAGE AREA-WIDE VERTICAL TRAFFIC CALMING

**STREET PLAN**

E 10TH AVE

SCALE: HOR: 1"=40' VER: N/A	DATE: JAN, 2025	STATUS: STATUS:	R3 SHEET 01 R4
GRID: SW1135, SW1241, SW1339, SW2034			



TRAFFIC CALMING DEVICE TABLE				
TRAFFIC CALMING DEVICE NO.	DEVICE TYPE	APPX STATION**	APPX ROADWAY WIDTH (FT)	REMARKS
SH-6	ASPHALT FLAT TOP SPEED HUMP	72+16	27	REMOVE & REPLACE 2" OF ASPHALT SURFACING APPROXIMATELY FROM STA 72+05 TO STA 72+28.
SH-7	ASPHALT FLAT TOP SPEED HUMP	76+47	27	REMOVE & REPLACE 2" OF ASPHALT SURFACING APPROXIMATELY FROM STA 76+36 TO STA 76+59.
SH-8	ASPHALT FLAT TOP SPEED HUMP	81+24	27	REMOVE & REPLACE 2" OF ASPHALT SURFACING APPROXIMATELY FROM STA 81+13 TO STA 81+36.

\*\*STATIONING IS LOCATED AT CENTER OF THE DEVICE.

**NOTES**

- HIGH PRESSURE 12-INCH GAS TRANSMISSION PIPELINE IS LOCATED WITHIN THE PROJECT LIMITS. STANDBY IS REQUIRED WHEN WORKING WITHIN 10 FEET OF THE PIPELINE. CONTRACTOR SHALL CONTACT UTILITY PRIOR TO WORK

File: H:\p03\05-002 MOA Traffic Engineering\Term\08-Northeast Anchorage Area\wide Vertical Traffic Calming\CAD\Drawings\25002\_08\_R1-R4\_Street-Plan.dwg PLOT DATE: 1/6/2026 10:57:48 AM

RECORD DRAWING

CONTRACTOR: \_\_\_\_\_

BY: \_\_\_\_\_

TITLE: \_\_\_\_\_

DATE: \_\_\_\_\_

THIS WILL SERVE TO CERTIFY THAT THESE RECORD DRAWINGS ARE A TRUE AND ACCURATE REPRESENTATION OF THE PROJECT AS CONSTRUCTED.

GRAPHIC SCALE						
FIELD BOOKS	BM NO.	LOCATION	ELEV.	REV.	DATE	DESCRIPTION
MOA BOOK NO	-	-	-	-	-	-
BASIS OF DATUM						
GAAB 1972 ADJUST	-	-	-	-	-	-
VERTICAL DATUM			REVISIONS			

**HDL ENGINEERING**  
Consultants

CIVIL ENGINEERING  
SURVEYING  
GEOTECHNICAL  
ENVIRONMENTAL

3335 Arctic Blvd., Suite 100  
Anchorage, AK 99503  
(907) 564-2120  
www.HDLalaska.com  
AECL861

CONSULTANT

ASHLEY L. ANDREWS  
CE-212137  
REGISTERED PROFESSIONAL ENGINEER

SEAL

MUNICIPALITY OF ANCHORAGE

4700 ELMORE ROAD  
ANCHORAGE,  
ALASKA 99507

TRAFFIC ENGINEERING DEPARTMENT

25-09 EAST ANCHORAGE AREA WIDE VERTICAL TRAFFIC CALMING

**STREET PLAN**

E 64TH AVE

SCALE: HOR: 1"=40' VER: N/A	DATE: JAN, 2026	STATUS: STATUS:	R4 of R4
GRID: SW1135, SW1241, SW1339, SW2034			SHEET