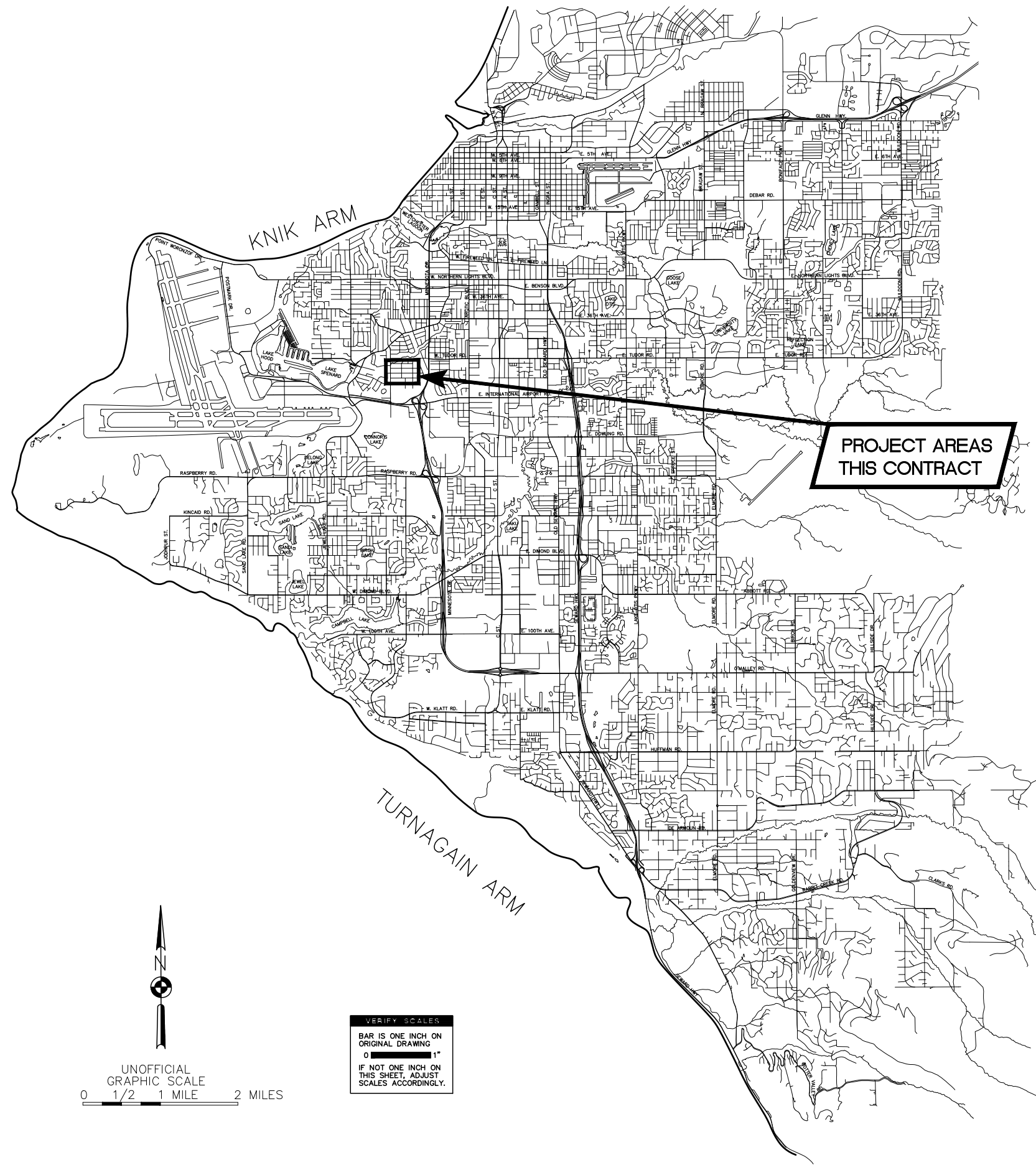


H:\jobs\21-014 MOA Traffic Eng Term II\51-Spenard Community Council Vertical Traffic Calming Improvements\CAD Drawings\21014_51_01_Cover.dwg, 1:2, 2/18/26 at 16:05 by JCOOPER

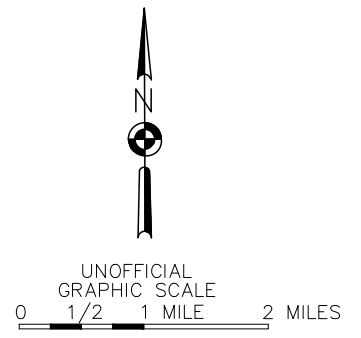


**MUNICIPALITY OF ANCHORAGE
TRAFFIC ENGINEERING DEPARTMENT**

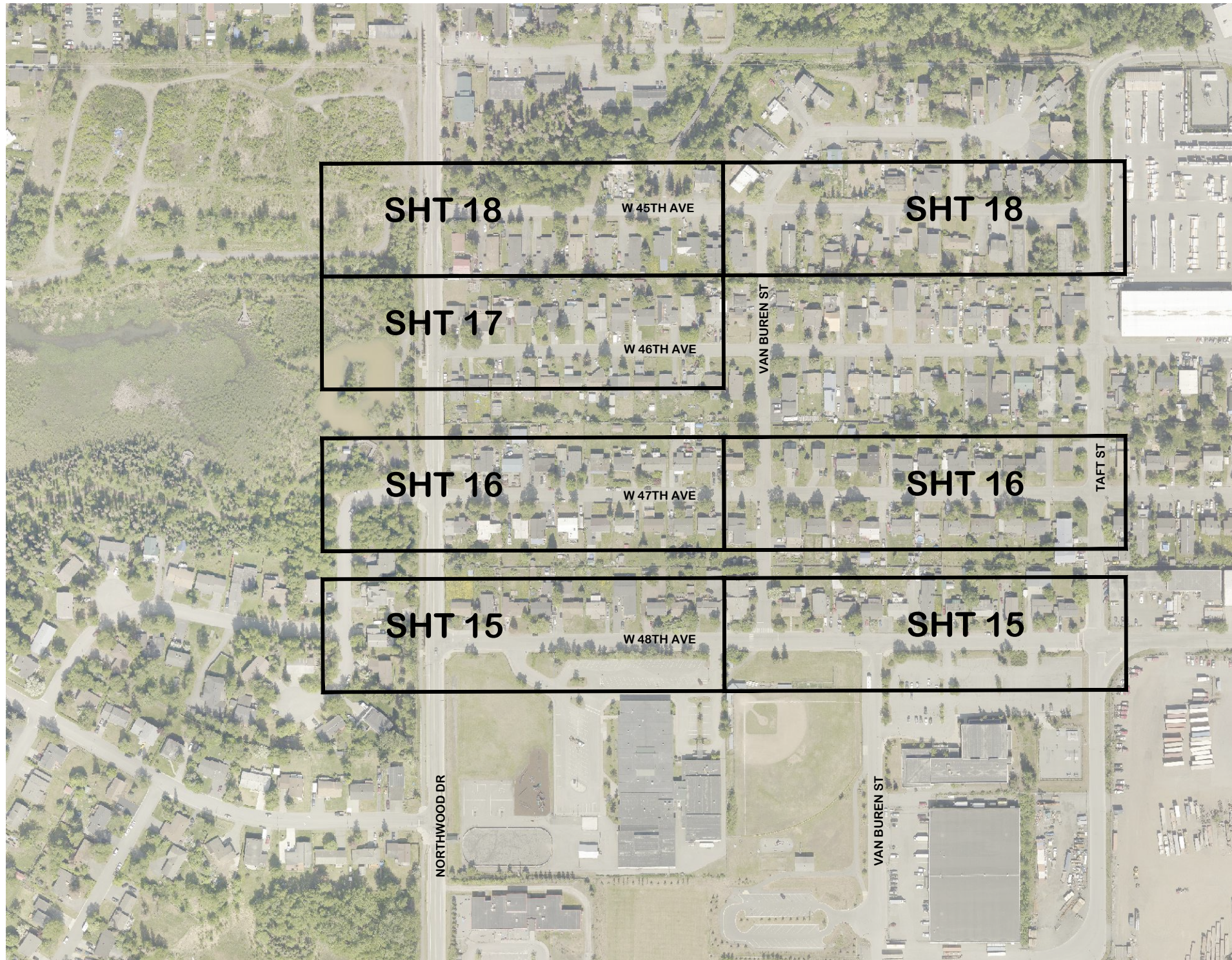
**NORTHWOOD AREA TRAFFIC CALMING
PROJECT 24-03**

APPROVED BY:

MELINDA T. KOHLHAAS, P.E.,
MUNICIPAL ENGINEER



VERIFY SCALES
BAR IS ONE INCH ON ORIGINAL DRAWING
0 1"
IF NOT ONE INCH ON THIS SHEET, ADJUST SCALES ACCORDINGLY.



DRAWING INDEX

SHEET NO.	DRAWING
1	TITLE SHEET
2	LEGEND, GENERAL NOTES, AND ABBREVIATIONS
3	SITE MAP, INDEX, AND DEVICE INFORMATION
4	SURVEY CONTROL
5	TEMPORARY EASEMENT & PERMIT MAP
6	TYPICAL SECTIONS
7-11	DETAILS
12	DEMOLITION PLAN
13	LAYOUT PLAN
14	LAYOUT POINT TABLES
15-18	STREET PLAN
19	STORM DRAIN LAYOUT
20	SIGNING AND STRIPING PLAN
21-22	SIGN SUMMARY AND SALVAGE
23	SCHEDULES, LEGEND AND ABBREVIATIONS
24	ILLUMINATION AND SCHEDULES

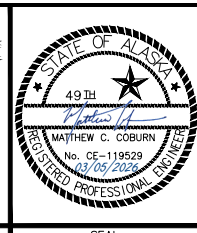


STREET NAME	ASPHALT SPEED CUSHION	ASPHALT FLAT TOP SPEED HUMP	SINUSOIDAL SPEED HUMP	SHEET NUMBER
W 48TH AVE	2			15
W 47TH AVE	2			16
W 46TH AVE			1	17
W 45TH AVE		2		18

RECORD DRAWING
 1. DATA PROVIDED BY: _____ TITLE: _____
 THIS WILL SERVE TO CERTIFY THAT THESE RECORD DRAWINGS ARE A TRUE AND ACCURATE REPRESENTATION OF THE PROJECT AS CONSTRUCTED.
 CONTRACTOR: _____ TITLE: _____ DATE: _____
 BY: _____
 2. DATA TRANSFERRED BY: _____ TITLE: _____
 COMPANY: _____ DATE: _____
 3. BASED ON PERIODIC FIELD OBSERVATIONS BY THE ENGINEER (OR AN INDIVIDUAL UNDER HIS/HER DIRECT SUPERVISION), THE CONTRACTOR-PROVIDED DATA APPEARS TO REPRESENT THE PROJECT AS CONSTRUCTED.
 DATA TRANSFER CHECKED BY: _____ TITLE: _____
 COMPANY: _____ DATE: _____
 BY: _____

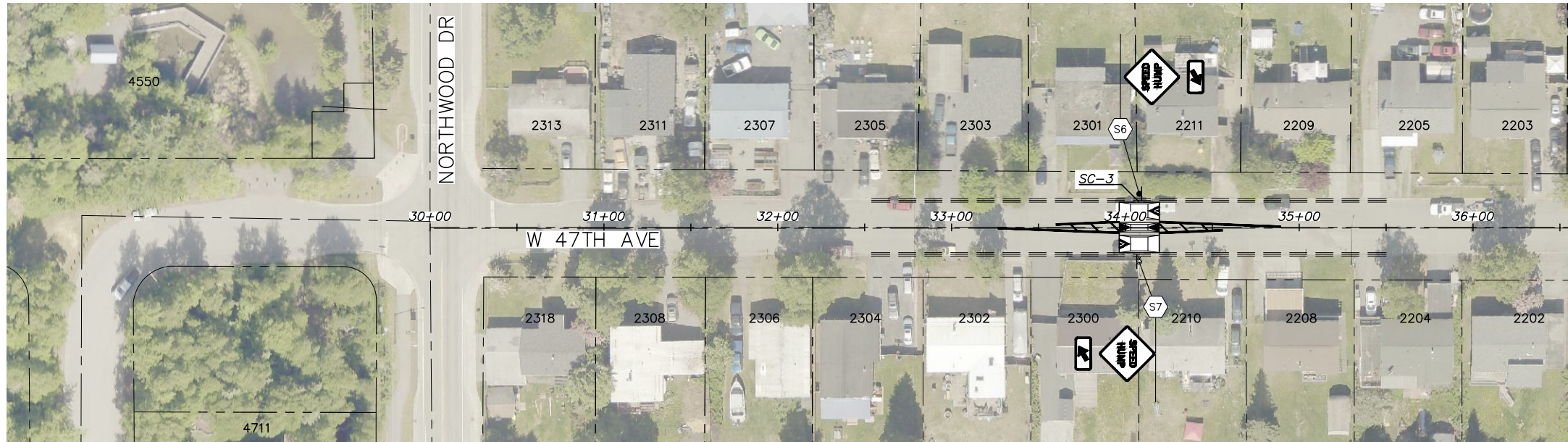
DATA	DRAWN BY	CHECKED BY	FIELD BOOKS	TBM NO.	LOCATION	ELEV.	REV.	DATE	DESCRIPTION	BY
BASE TOPOGRAPHY										
PROFILE										
STORM SEWER										
WATER/SANITARY SEWER										
GAS										
TELEPHONE										
ELECTRIC										
DESIGN										
QUANTITIES										
PRELIMINARY/FINAL										
MUNICIPAL/STATE										

HDL ENGINEERING
 CONSULTANTS
 • CIVIL ENGINEERING
 • SURVEYING
 • GEOTECHNICAL
 • ENVIRONMENTAL
 3335 Arctic Blvd., Suite 100
 Anchorage, AK 99503
 (907) 564-2120
 www.HDLalaska.com
 AECL861

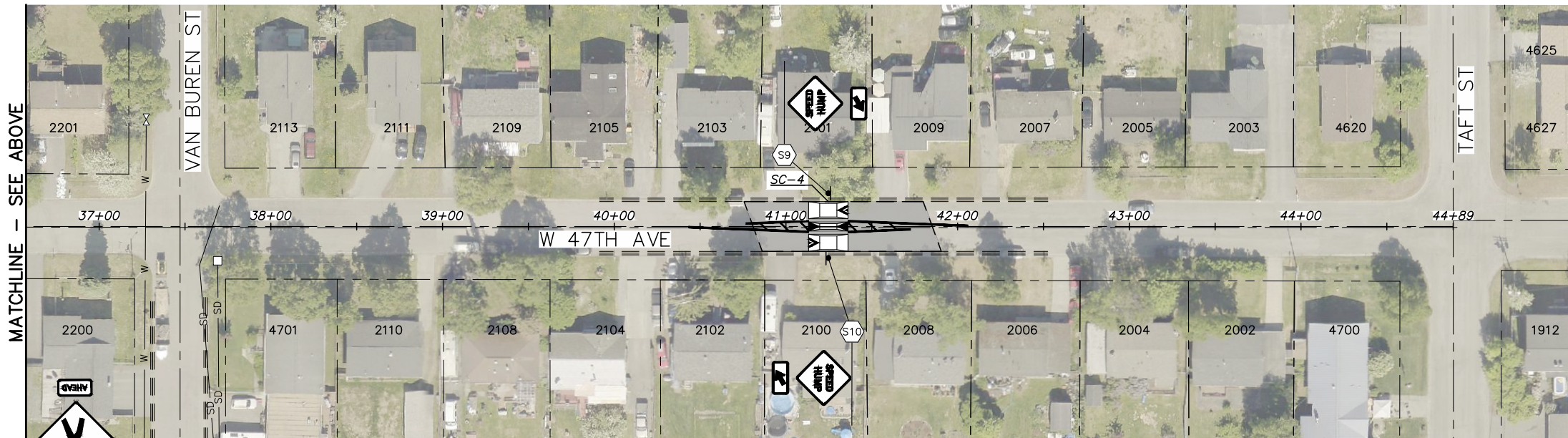


TRAFFIC ENGINEERING DEPARTMENT	
24-03	NORTHWOOD AREA TRAFFIC CALMING
SITE MAP, INDEX, AND DEVICE INFORMATION	
SCALE HOR. NTS VER. NTS	GRID SW1828 DATE MARCH 2026 STATUS
3 of 24 SHEET	

FILE NO. -



MATCHLINE - SEE BELOW



MATCHLINE - SEE ABOVE

TRAFFIC CALMING DEVICE TABLE				
TRAFFIC CALMING DEVICE NO.	DEVICE TYPE	APPX STATION**	APPX ROADWAY WIDTH (FT)	REMARKS
SC-3	ASPHALT SPEED CUSHION	34+08	29	REMOVE & REPLACE 2" OF ASPHALT SURFACING APPROXIMATELY FROM STA 33+96 TO STA 34+19. SEE SHEET 7 FOR ASPHALT SPEED CUSHION AND STRIPING LAYOUT DETAILS.
SC-4	ASPHALT SPEED CUSHION	41+25	29	REMOVE & REPLACE 2" OF ASPHALT SURFACING APPROXIMATELY FROM STA 40+76 TO STA 41+91. SEE SHEET 7 FOR ASPHALT SPEED CUSHION AND STRIPING LAYOUT DETAILS.

**STATIONING IS LOCATED AT CENTER OF THE ASPHALT SPEED CUSHION.

H:\Projects\2024\MOA Traffic Eng Term (VOC-Vertical Traffic Calming)\Drawings\2024_10_04-09_Layout_1.mxd, 04-12-24 at 09:02 by ALA
 View: 000 - 2024_10_04_09_Layout_1.dwg
 User: ALA
 XREF: 2024_10_04_09_Layout_1.dwg, 2024_10_04_09_Layout_1.dwg, 2024_10_04_09_Layout_1.dwg, 2024_10_04_09_Layout_1.dwg, 2024_10_04_09_Layout_1.dwg

RECORD DRAWING

1. DATA PROVIDED BY: _____ TITLE: _____

THIS WILL SERVE TO CERTIFY THAT THESE RECORD DRAWINGS ARE A TRUE AND ACCURATE REPRESENTATION OF THE PROJECT AS CONSTRUCTED.

CONTRACTOR: _____ TITLE: _____ DATE: _____

BY: _____

2. DATA TRANSFERRED BY: _____ TITLE: _____

COMPANY: _____ DATE: _____

3. BASED ON PERIODIC FIELD OBSERVATIONS BY THE ENGINEER (OR AN INDIVIDUAL UNDER HIS/HER DIRECT SUPERVISION), THE CONTRACTOR-PROVIDED DATA APPEARS TO REPRESENT THE PROJECT AS CONSTRUCTED.

DATA TRANSFER CHECKED BY: _____ TITLE: _____

COMPANY: _____ DATE: _____

BY: _____

DATA	DRAWN BY	CHECKED BY
BASE		
TOPOGRAPHY		
PROFILE		
STORM SEWER		
WATER/SANITARY SEWER		
GAS		
TELEPHONE		
ELECTRIC		
DESIGN		
QUANTITIES		
PRELIMINARY/FINAL		
MUNICIPAL/STATE		

GRAPHIC SCALE						
FIELD BOOKS	TBM NO.	LOCATION	ELEV.	REV	DATE	DESCRIPTION
DESIGN						
STAKING						
ASBUILT						
CONTRACTOR						
INSPECTOR						
BASIS OF THIS DATUM						

HDL ENGINEERING

• CIVIL ENGINEERING
 • SURVEYING
 • GEOTECHNICAL
 • ENVIRONMENTAL

3335 Arctic Blvd., Suite 100
 Anchorage, AK 99503
 (907) 564-2120
 www.HDLalaska.com
 AECL861

STATE OF ALASKA

49th

Matthew C. Coburn

03/05/2024

REGISTERED PROFESSIONAL ENGINEER

ROYALTY OF ANCHORAGE

TRAFFIC ENGINEERING DEPARTMENT

24-03 NORTHWOOD AREA TRAFFIC CALMING

STREET PLAN

W 47TH AVE

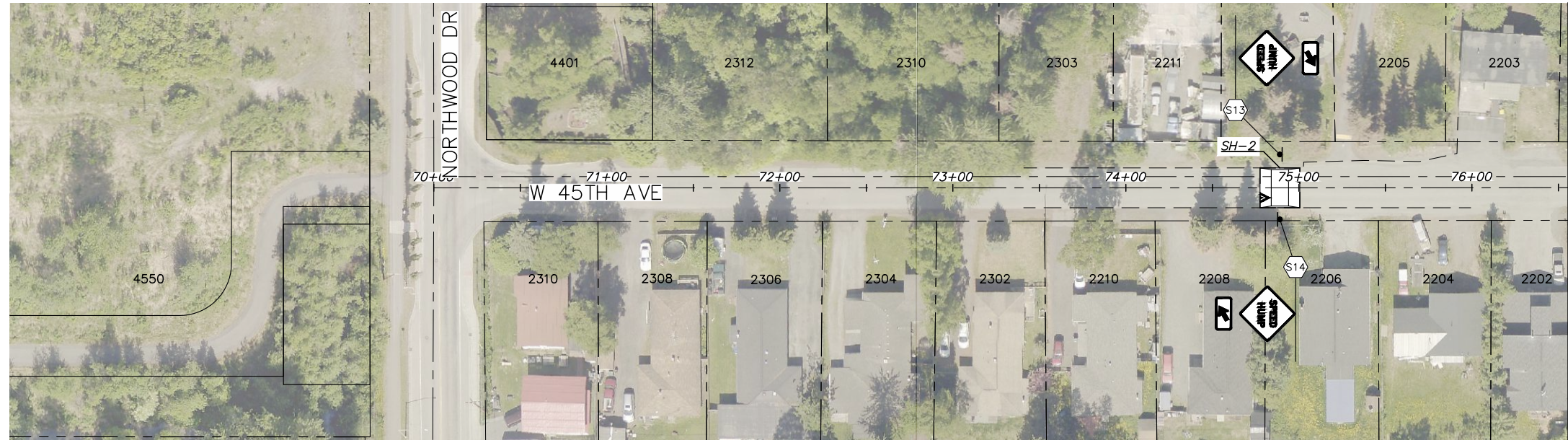
SCALE: HOR. 1"=40'
 VER. N/A

GRID: SW1828

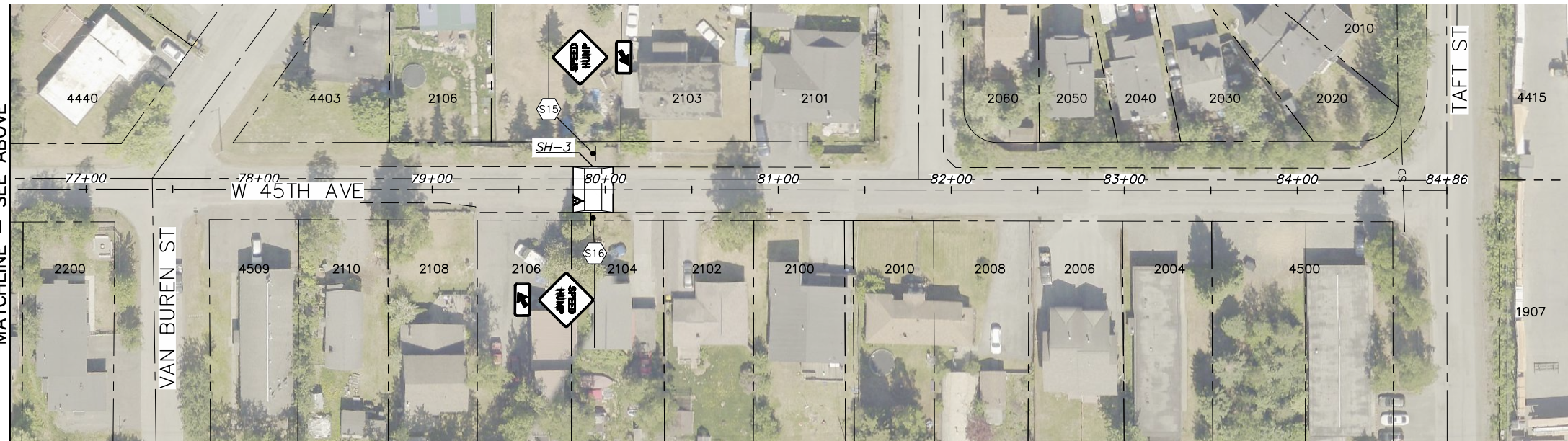
DATE: MARCH 2024 STATUS: _____

16 of 24 SHEET

FILE NO. -



MATCHLINE - SEE BELOW



MATCHLINE - SEE ABOVE

TRAFFIC CALMING DEVICE TABLE

TRAFFIC CALMING DEVICE NO.	DEVICE TYPE	APPX STATION**	APPX ROADWAY WIDTH (FT)	REMARKS
SH-2	ASPHALT FLAT TOP SPEED HUMP	74+89	23	REMOVE & REPLACE 2" OF ASPHALT SURFACING APPROXIMATELY FROM STA 74+78 TO STA 75+01. SEE SHEET 8 FOR ASPHALT FLAT TOP SPEED HUMP AND STRIPING LAYOUT DETAILS.
SH-3	ASPHALT FLAT TOP SPEED HUMP	79+93	26.5	REMOVE & REPLACE 2" OF ASPHALT SURFACING APPROXIMATELY FROM STA 79+81 TO STA 80+04. SEE SHEET 8 FOR ASPHALT FLAT TOP SPEED HUMP AND STRIPING LAYOUT DETAILS.

**STATIONING IS LOCATED AT CENTER OF THE ASPHALT FLAT TOP SPEED HUMP.

H:\Projects\2024\MOA Traffic Eng Term (10-Vertical Traffic Calming)\Drawings\2104_10_04-09_Layout_1.mxd, 04-12-24 at 09:02 by ALA
 XREF: 2104_10_04-09_01.dwg
 XREF: 2104_10_04-09_02.dwg
 XREF: 2104_10_04-09_03.dwg
 XREF: 2104_10_04-09_04.dwg
 XREF: 2104_10_04-09_05.dwg
 XREF: 2104_10_04-09_06.dwg
 XREF: 2104_10_04-09_07.dwg
 XREF: 2104_10_04-09_08.dwg
 XREF: 2104_10_04-09_09.dwg
 XREF: 2104_10_04-09_10.dwg
 XREF: 2104_10_04-09_11.dwg
 XREF: 2104_10_04-09_12.dwg
 XREF: 2104_10_04-09_13.dwg
 XREF: 2104_10_04-09_14.dwg
 XREF: 2104_10_04-09_15.dwg
 XREF: 2104_10_04-09_16.dwg
 XREF: 2104_10_04-09_17.dwg
 XREF: 2104_10_04-09_18.dwg
 XREF: 2104_10_04-09_19.dwg
 XREF: 2104_10_04-09_20.dwg
 XREF: 2104_10_04-09_21.dwg
 XREF: 2104_10_04-09_22.dwg
 XREF: 2104_10_04-09_23.dwg
 XREF: 2104_10_04-09_24.dwg
 XREF: 2104_10_04-09_25.dwg
 XREF: 2104_10_04-09_26.dwg
 XREF: 2104_10_04-09_27.dwg
 XREF: 2104_10_04-09_28.dwg
 XREF: 2104_10_04-09_29.dwg
 XREF: 2104_10_04-09_30.dwg
 XREF: 2104_10_04-09_31.dwg
 XREF: 2104_10_04-09_32.dwg
 XREF: 2104_10_04-09_33.dwg
 XREF: 2104_10_04-09_34.dwg
 XREF: 2104_10_04-09_35.dwg
 XREF: 2104_10_04-09_36.dwg
 XREF: 2104_10_04-09_37.dwg
 XREF: 2104_10_04-09_38.dwg
 XREF: 2104_10_04-09_39.dwg
 XREF: 2104_10_04-09_40.dwg
 XREF: 2104_10_04-09_41.dwg
 XREF: 2104_10_04-09_42.dwg
 XREF: 2104_10_04-09_43.dwg
 XREF: 2104_10_04-09_44.dwg
 XREF: 2104_10_04-09_45.dwg
 XREF: 2104_10_04-09_46.dwg
 XREF: 2104_10_04-09_47.dwg
 XREF: 2104_10_04-09_48.dwg
 XREF: 2104_10_04-09_49.dwg
 XREF: 2104_10_04-09_50.dwg
 XREF: 2104_10_04-09_51.dwg
 XREF: 2104_10_04-09_52.dwg
 XREF: 2104_10_04-09_53.dwg
 XREF: 2104_10_04-09_54.dwg
 XREF: 2104_10_04-09_55.dwg
 XREF: 2104_10_04-09_56.dwg
 XREF: 2104_10_04-09_57.dwg
 XREF: 2104_10_04-09_58.dwg
 XREF: 2104_10_04-09_59.dwg
 XREF: 2104_10_04-09_60.dwg
 XREF: 2104_10_04-09_61.dwg
 XREF: 2104_10_04-09_62.dwg
 XREF: 2104_10_04-09_63.dwg
 XREF: 2104_10_04-09_64.dwg
 XREF: 2104_10_04-09_65.dwg
 XREF: 2104_10_04-09_66.dwg
 XREF: 2104_10_04-09_67.dwg
 XREF: 2104_10_04-09_68.dwg
 XREF: 2104_10_04-09_69.dwg
 XREF: 2104_10_04-09_70.dwg
 XREF: 2104_10_04-09_71.dwg
 XREF: 2104_10_04-09_72.dwg
 XREF: 2104_10_04-09_73.dwg
 XREF: 2104_10_04-09_74.dwg
 XREF: 2104_10_04-09_75.dwg
 XREF: 2104_10_04-09_76.dwg
 XREF: 2104_10_04-09_77.dwg
 XREF: 2104_10_04-09_78.dwg
 XREF: 2104_10_04-09_79.dwg
 XREF: 2104_10_04-09_80.dwg
 XREF: 2104_10_04-09_81.dwg
 XREF: 2104_10_04-09_82.dwg
 XREF: 2104_10_04-09_83.dwg
 XREF: 2104_10_04-09_84.dwg
 XREF: 2104_10_04-09_85.dwg
 XREF: 2104_10_04-09_86.dwg
 XREF: 2104_10_04-09_87.dwg
 XREF: 2104_10_04-09_88.dwg
 XREF: 2104_10_04-09_89.dwg
 XREF: 2104_10_04-09_90.dwg
 XREF: 2104_10_04-09_91.dwg
 XREF: 2104_10_04-09_92.dwg
 XREF: 2104_10_04-09_93.dwg
 XREF: 2104_10_04-09_94.dwg
 XREF: 2104_10_04-09_95.dwg
 XREF: 2104_10_04-09_96.dwg
 XREF: 2104_10_04-09_97.dwg
 XREF: 2104_10_04-09_98.dwg
 XREF: 2104_10_04-09_99.dwg
 XREF: 2104_10_04-09_100.dwg

RECORD DRAWING

1. DATA PROVIDED BY: _____ TITLE: _____

THIS WILL SERVE TO CERTIFY THAT THESE RECORD DRAWINGS ARE A TRUE AND ACCURATE REPRESENTATION OF THE PROJECT AS CONSTRUCTED.

CONTRACTOR: _____ TITLE: _____ DATE: _____

2. DATA TRANSFERRED BY: _____ TITLE: _____

COMPANY: _____ DATE: _____

3. BASED ON PERIODIC FIELD OBSERVATIONS BY THE ENGINEER (OR AN INDIVIDUAL UNDER HIS/HER DIRECT SUPERVISION), THE CONTRACTOR-PROVIDED DATA APPEARS TO REPRESENT THE PROJECT AS CONSTRUCTED.

DATA TRANSFER CHECKED BY: _____ TITLE: _____

COMPANY: _____ DATE: _____

BY: _____

DATA	DRAWN BY	CHECKED BY
BASE		
TOPOGRAPHY		
PROFILE		
STORM SEWER		
WATER/SANITARY SEWER		
GAS		
TELEPHONE		
ELECTRIC		
DESIGN		
QUANTITIES		
PRELIMINARY/FINAL		
MUNICIPAL/STATE		

GRAPHIC SCALE: 40 0 40 80 120

FIELD BOOKS	TBM NO.	LOCATION	ELEV.	REV	DATE	DESCRIPTION	BY
DESIGN							
STAKING							
ASBUILT							
CONTRACTOR							
INSPECTOR							

PLAN CHECK CONSTRUCTION RECORD VERTICAL DATUM REVISIONS CONSULTANT SEAL

HDL ENGINEERING
CIVIL ENGINEERING
SURVEYING
GEOTECHNICAL
ENVIRONMENTAL

3335 Arctic Blvd., Suite 100
Anchorage, AK 99503
(907) 564-2120
www.HDLalaska.com
AECL861

STATE OF ALASKA
49th
Matthew C. Coburn
03/05/2026
REGISTERED PROFESSIONAL ENGINEER

THE UNIVERSITY OF ALASKA
SEAL

TRAFFIC ENGINEERING DEPARTMENT

24-03 NORTHWOOD AREA TRAFFIC CALMING

STREET PLAN

W 45TH AVE

SCALE: HOR. 1"=40' VER. N/A
GRID: SW1828
DATE: MARCH 2026 STATUS: _____

18 of 24 SHEET

FILE NO. -