

Anchorage Neighborhood Greenways Program

The MOA Traffic Engineering Department launched the Anchorage Neighborhood Greenways Program in 2025. The program designates key neighborhood streets as “Neighborhood Greenways” that are designed to prioritize walking biking and rolling using a variety of traffic calming and place-making treatments. These streets function as connectors and low stress options in Anchorage’s non-motorized network and link neighborhoods to parks, greenbelt trails, schools, and other local destinations.

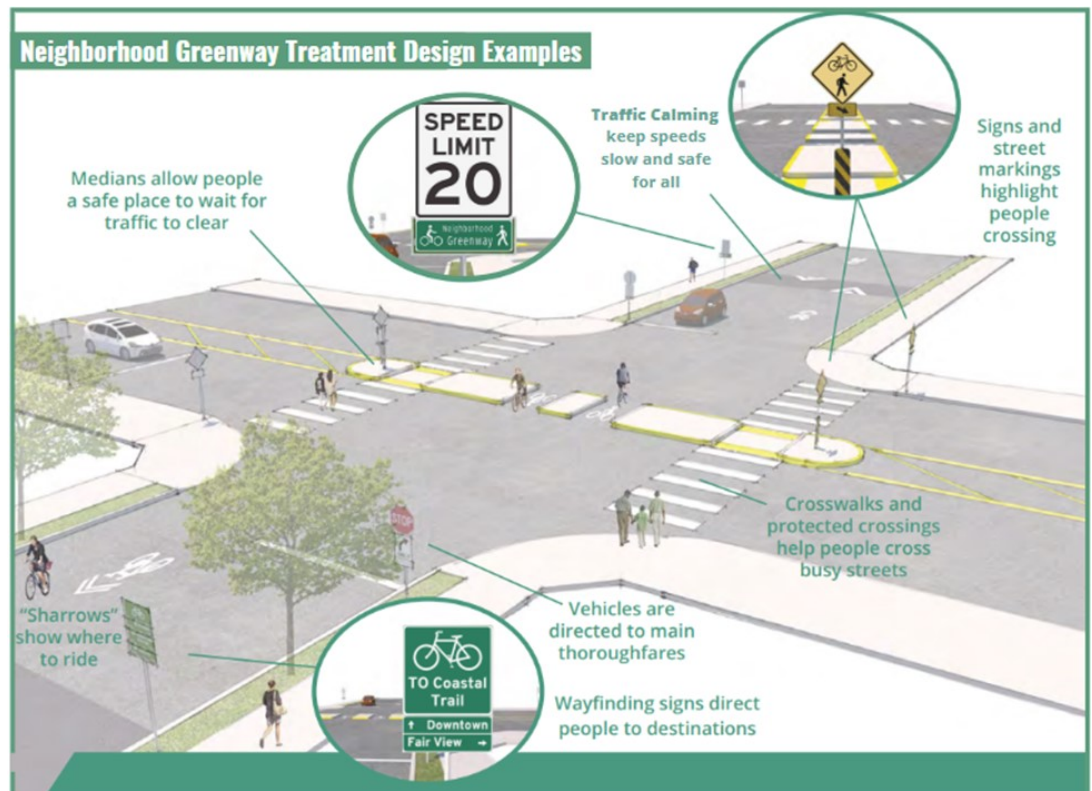
Public input is open for proposed 2026 Neighborhood Greenway routes, including several downtown enhanced shared streets. See map on reverse side for contact information and website QR code. Comments are due by January 5th, 2026.



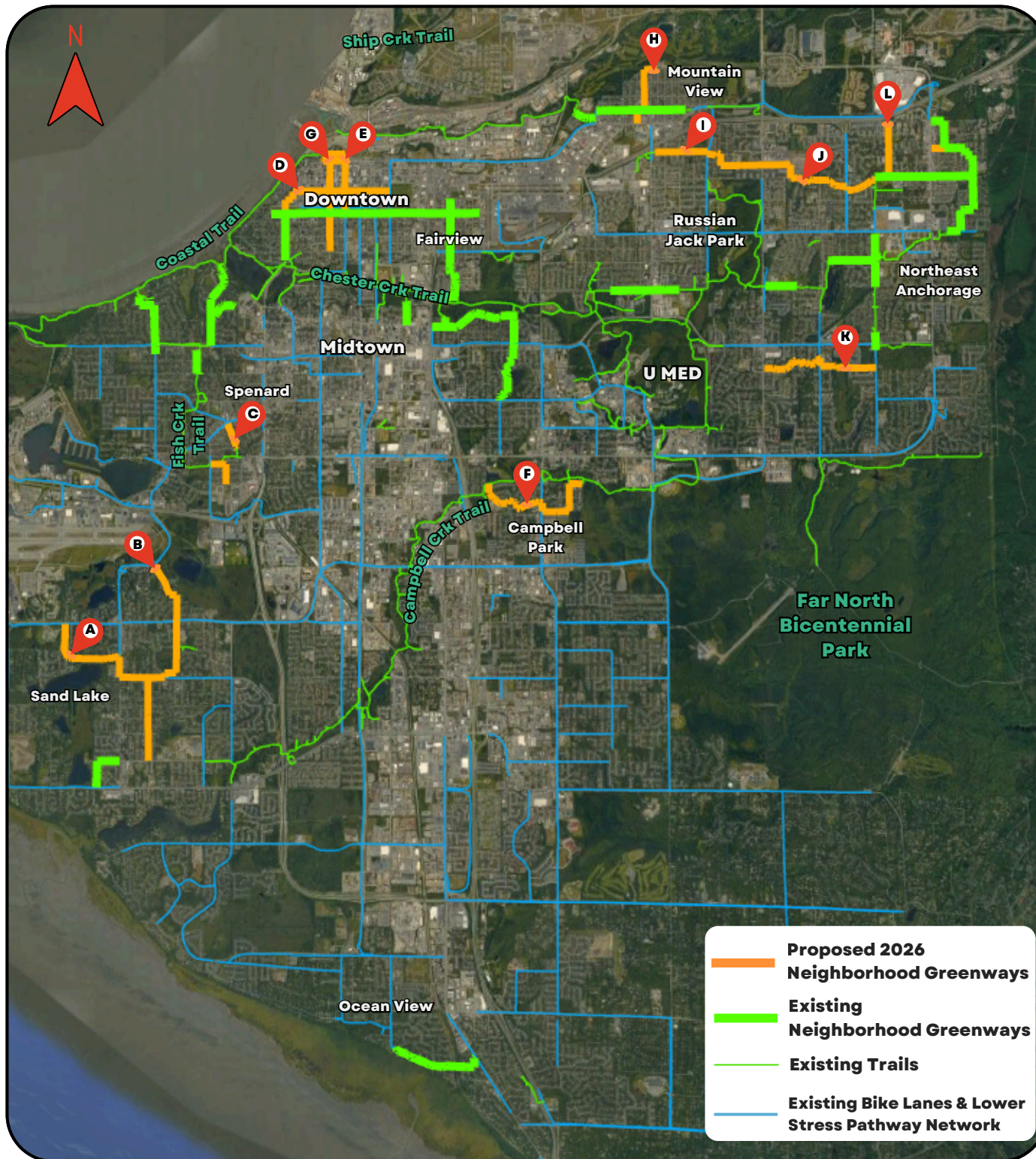
Patterson Street Neighborhood Greenway

Neighborhood Greenway Treatments include:

- “Sharrow” street markings.
- Wayfinding signage.
- 20-mph speed limit signs with accompanying “Neighborhood Greenway” plaques.
- Reoriented stop signs or new All-Way Stops at intersections based on engineering evaluation.



In future years or as part of current capital improvement projects, these streets will be assessed for traffic calming treatments, traffic diverters, and protected crossings at busy streets.



2026 Anchorage Neighborhood Greenways Network

PROPOSED SUMMER 2026 ROUTES

- | | |
|---|---|
| A Caravelle Dr
Raspberry to Jewel Lake Rd | G G St
W 3rd Ave to W 15th St |
| B Blackberry & Collins Way
88th Ave to Jewel Lake Rd | H Price & Irwin St
Mountain View to McPhee Ave |
| C S. Fish Creek Connections
Van Buren Rd, W 45th Ave, and Taft St | I E 3rd Ave
Bragaw Ped Tunnel to Pine St |
| D W 7th Ave
N St to Cordova St | J E 4th and 6th Ave
Pine to Patterson St |
| E E St
W 10th Ave to W 3rd Ave | K Kenney Hill & Tamir
Boniface Rd to Patterson St |
| F Waldron Tunnel
Folker st to Cache Dr | L Oklahoma St
E 6th Ave to Boundary Rd |

**FOR MORE INFO AND
INTERACTIVE SURVEY MAP VISIT**

WWW.MUNI.ORG/DEPARTMENTS/TRAFFIC/PAGES/GREENWAYS.ASPX



WEBSITE LINK