



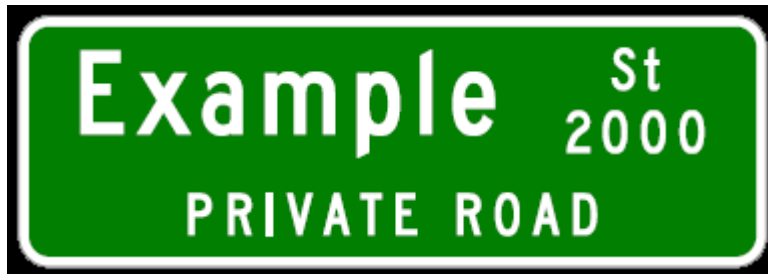
SIGN INSTALLATION POLICY

Private Street Signs

The Municipality of Anchorage Traffic Department has established the following guidelines for the production and installation of a 'private' street sign (D3-1P). The lower portion of the sign should follow the standard 8" D3-101 guidelines as set forth in the Alaska Department of Transportation and Public Facilities Alaska Sign Design Specifications – see attached.

Effective 1 June 2015, the "arch" Private Street Sign is no longer approved for new installations.

All streets and roadways designated as 'private' must adhere to the following guidelines.



Where the sign is being used to identify the addresses located off of a joint driveway, the name of the addressing street shall be used, and, instead of the 'St.' designator, the low and high range of street addresses shall be used. For example, a series of addresses located off of a Municipal street, in the range of 24151 to 24347, should read:



NOTES:

1. All signs should be installed on Telspar posts in accordance with the attached mounting and installation details.
2. All street names shall be done as Upper/Lower case alphabets. See following image from the Alaska Sign Design Supplement
3. All street names shall be done as Upper/Lower case alphabets, except for the “PRIVATE DRIVEWAY” and “PRIVATE ROAD” messages which will be done in Upper Case, only, with a 2” character height
4. The use of a directional arrow pointing in the direction of the joint driveways MAY be used, but is not required.

See Appendix “A”, following.

Questions?

Dan Boots
Engineering Technician IV
Municipality Of Anchorage
BootsDL@muni.org or 907 343-8406

Charmalee Howard
Paint and Sign Leadman
Municipality Of Anchorage
HowardCG@muni.org or 907 343-4384

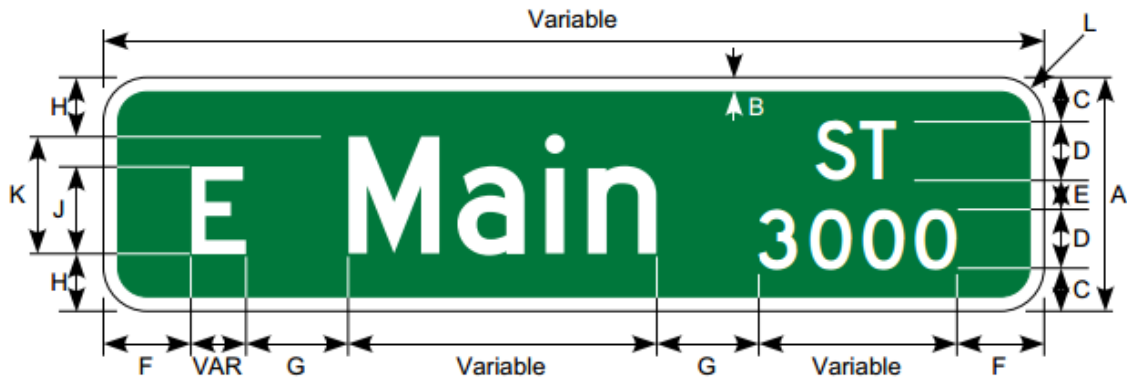
Ralph Blanchard
Paint and Sign Shop Foreman
Municipality Of Anchorage
BlanchardRL@muni.org or 907 343-4384

Stephanie Mormilo, P.E.
Municipal Traffic Engineer

APPENDIX "A"

SIGN DESIGN AND INSTALLATION DETAILS

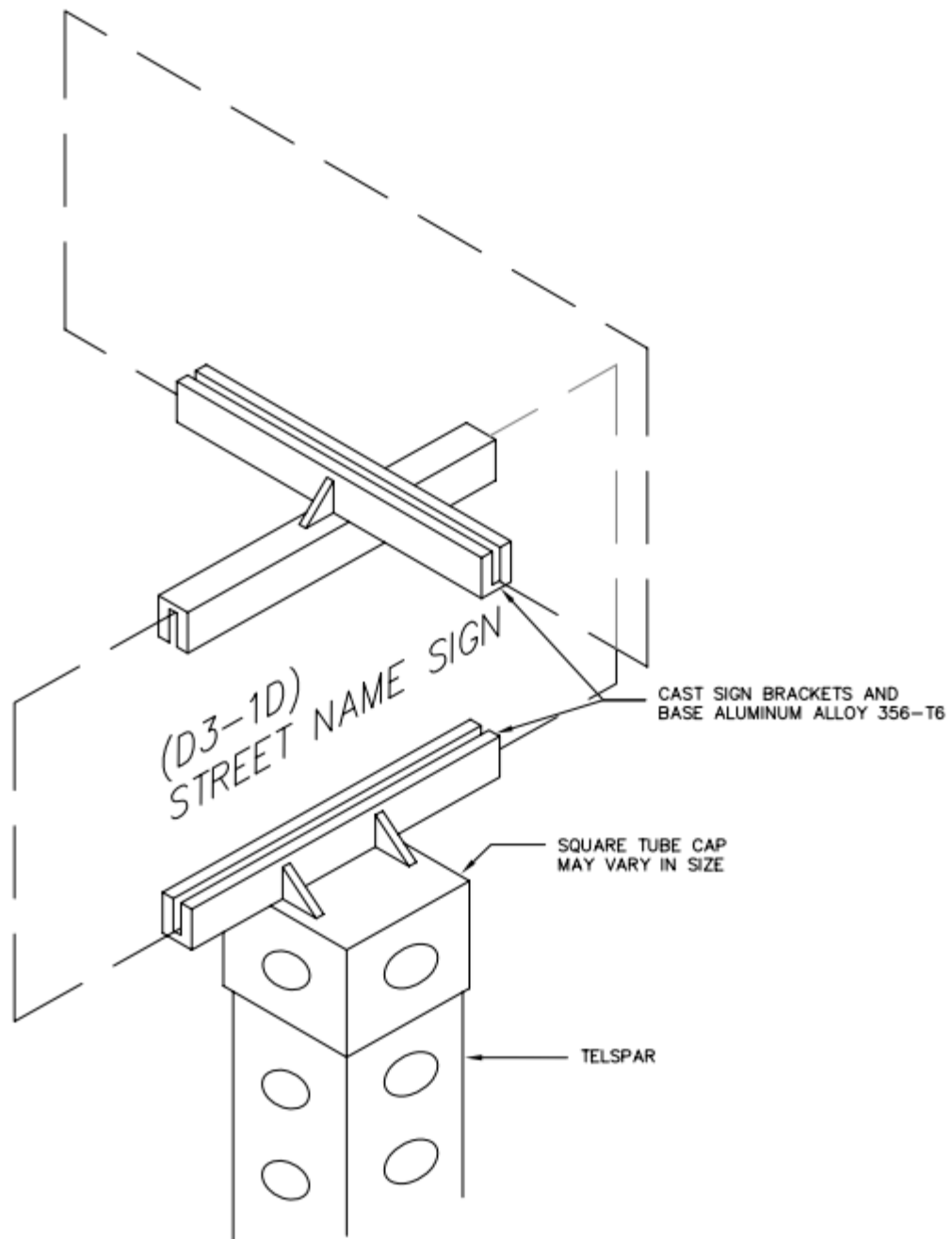
D3-101



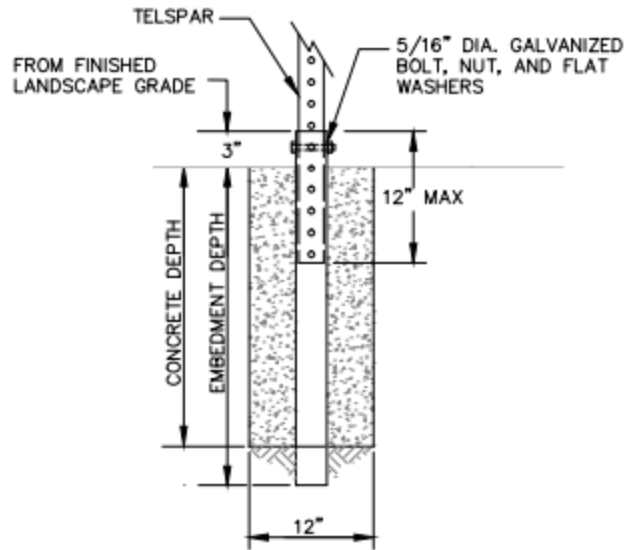
Border and Legend: White
Background: Green

* Letters may be series B, C, or D.
For Overhead Mounting Only

Road Class	Dimensions (inches)										
	A	B	C	D	E	F	G	H	J	K	L
Rds w Spd Limits <= 25MPH or Stop Condition	8	0.50	1.5	2*	1.0	3±	3.5	2.0	3*	4*	1.5
All Other Roads	12	0.50	2.0	3*	2.0	4.5±	5.0	3.0	4*	6*	1.5



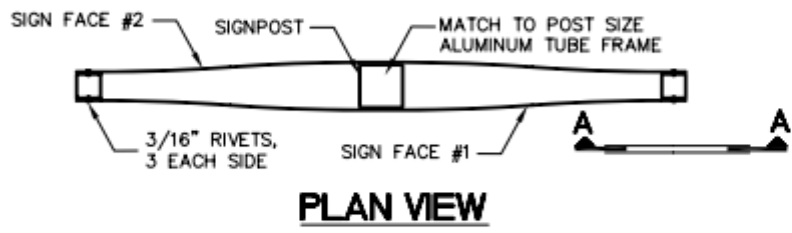
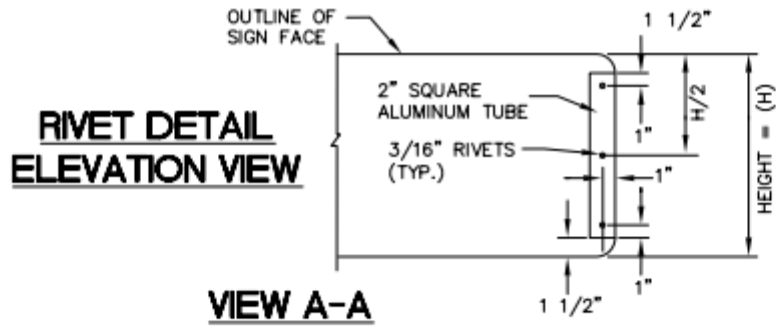
SEE M.A.S.S. SECTION 70.11 and STD DETAIL 70-28



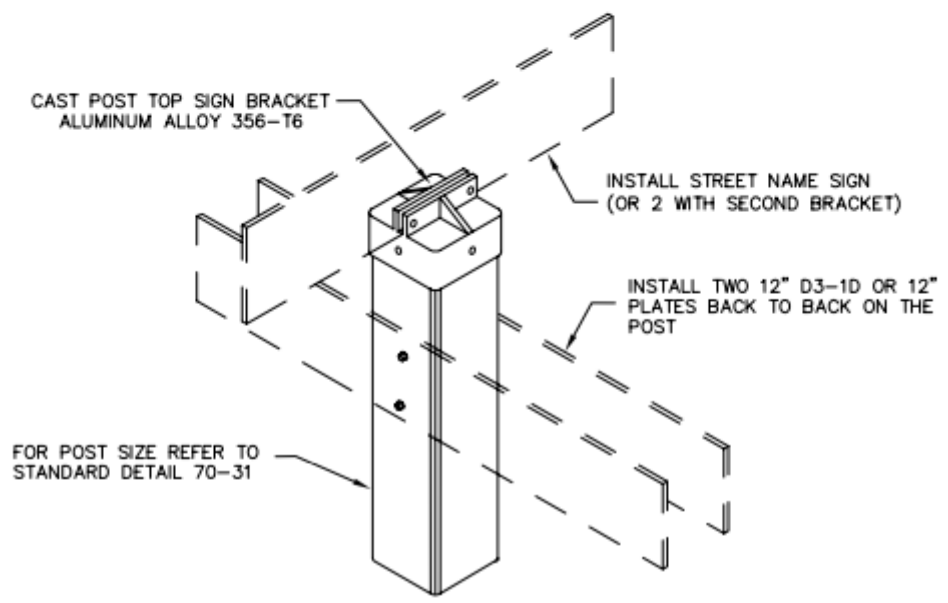
**CONCRETE FOUNDATION
FOR SIGN POST**

PERFORATED STEEL TUBES (P.S.T.) (12ga. - .105" Wall Thickness)			
SIGN SURFACE AREA SQ. FT.	POST SIZE	EMBEDMENT DEPTH	CONCRETE DEPTH
7' OR LESS	2" X 2"	27"	24"
GREATER THAN 7'	2 ½" X 2 ½"	33"	30"

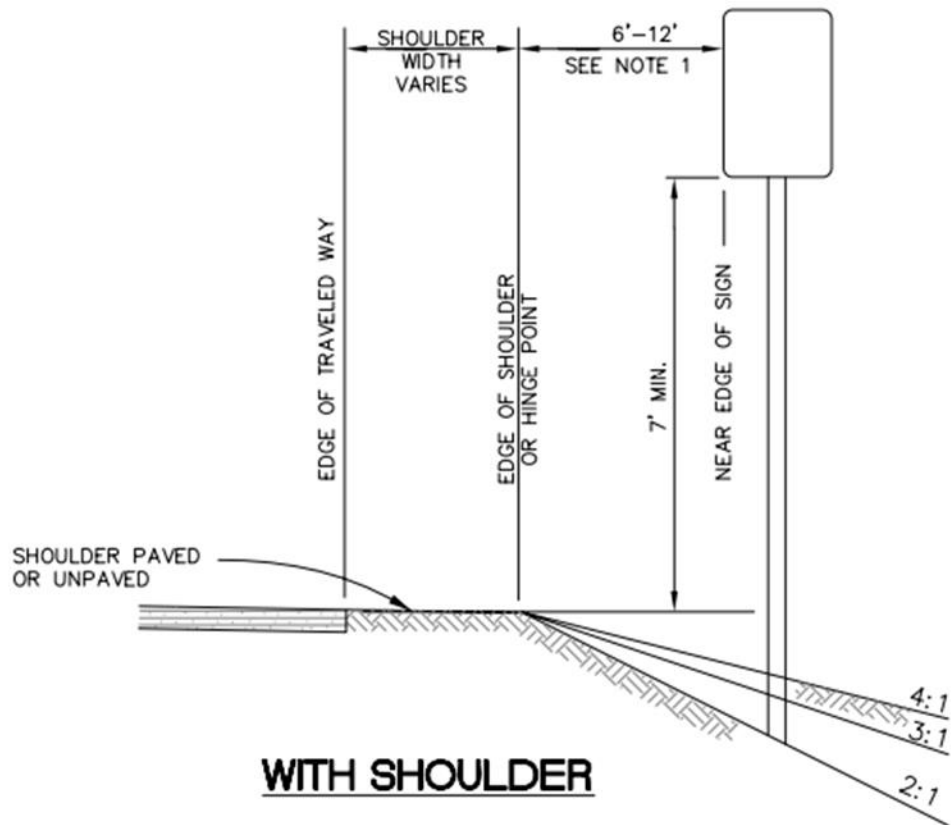
SEE M.A.S.S. SECTION 70.11 and STD DETAIL 70-31



12" SIGNS/PLATES 36" OR GREATER IN LENGTH BRACING DETAIL



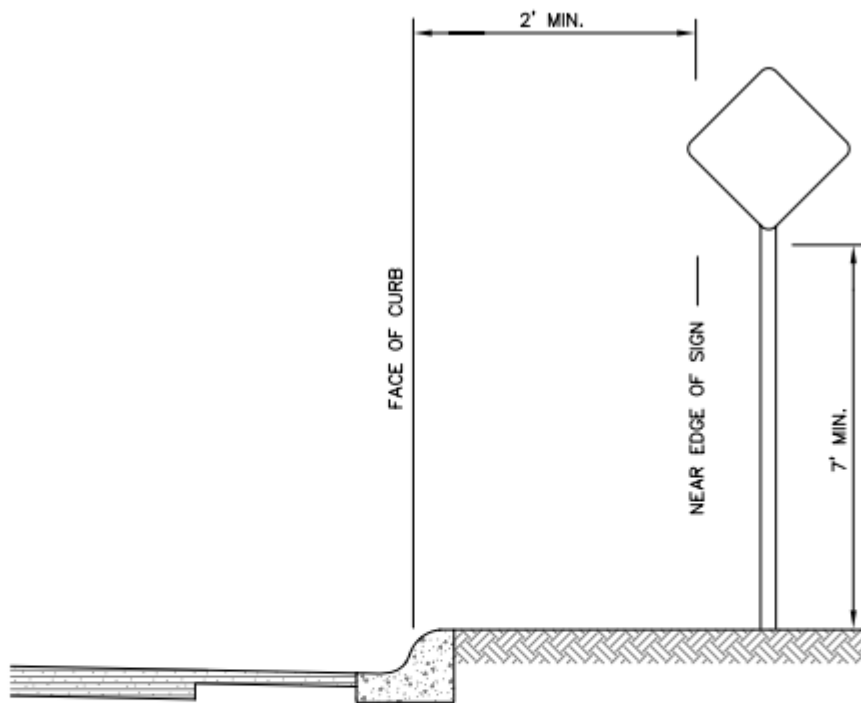
SEE M.A.S.S. SECTION 70.11 and STD DETAIL 70-32



NOTES:

1. UNLESS SHOWN OTHERWISE ON THE DRAWINGS, THE STANDARD SIGN OFFSET IS 12'. THE MINIMUM IS 6'.
2. IF SIGNS EXTEND OVER SIDEWALKS, THE MINIMUM VERTICAL CLEARANCE IS 7'-0".
3. ADD 6" TO MOUNTING HEIGHT ON UNPAVED ROADS.
4. IF SIGNS EXTEND OVER BIKE PATHS, THE MINIMUM VERTICAL CLEARANCE IS 8'-0".
5. PAINT ALL SIGN MOUNTING FASTENERS ON SIGN FACE A COLOR MATCHING THE SIGN FACE.
6. ATTACH ALL SIGNS ZEES AND BRACES MOUNTED TO THE POSTS WITH 5/16" BOLTS WITH SELF-LOCKING NUTS.

SEE M.A.S.S. SECTION 70.11 and STD DETAIL 70-20

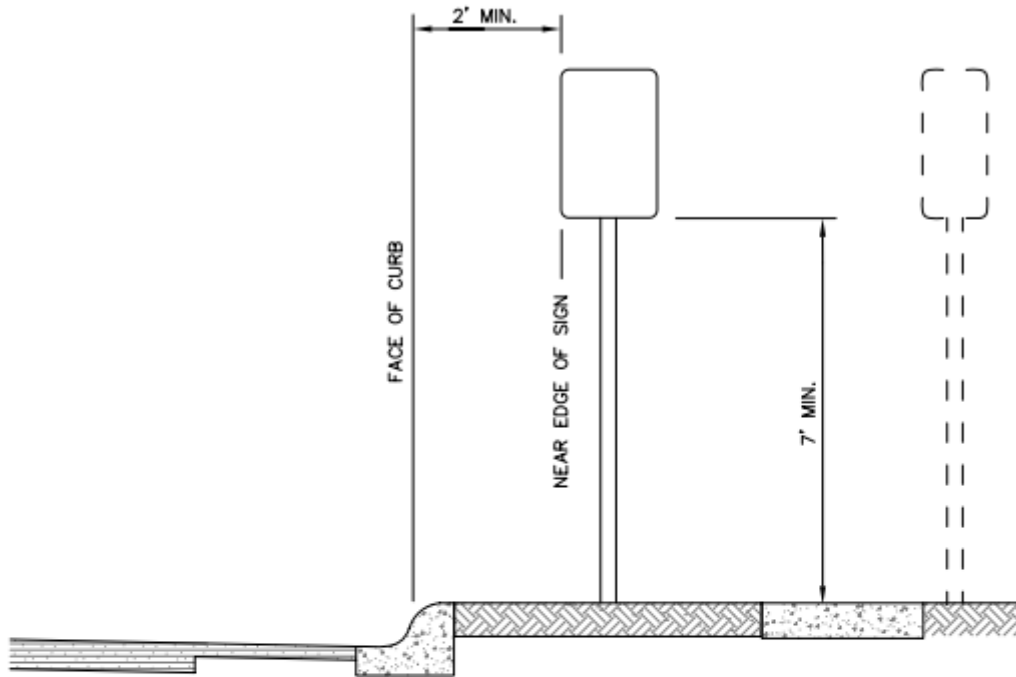


CURB WITHOUT SIDEWALK

NOTES:

1. PAINT ALL SIGN MOUNTING FASTENERS ON SIGN FACE A COLOR MATCHING THE SIGN FACE.
2. ATTACH ALL SIGNS ZEES AND BRACES MOUNTED TO THE POSTS WITH 5/16" BOLTS WITH SELF-LOCKING NUTS.

SEE M.A.S.S. SECTION 70.11 and STD DETAIL 70-23

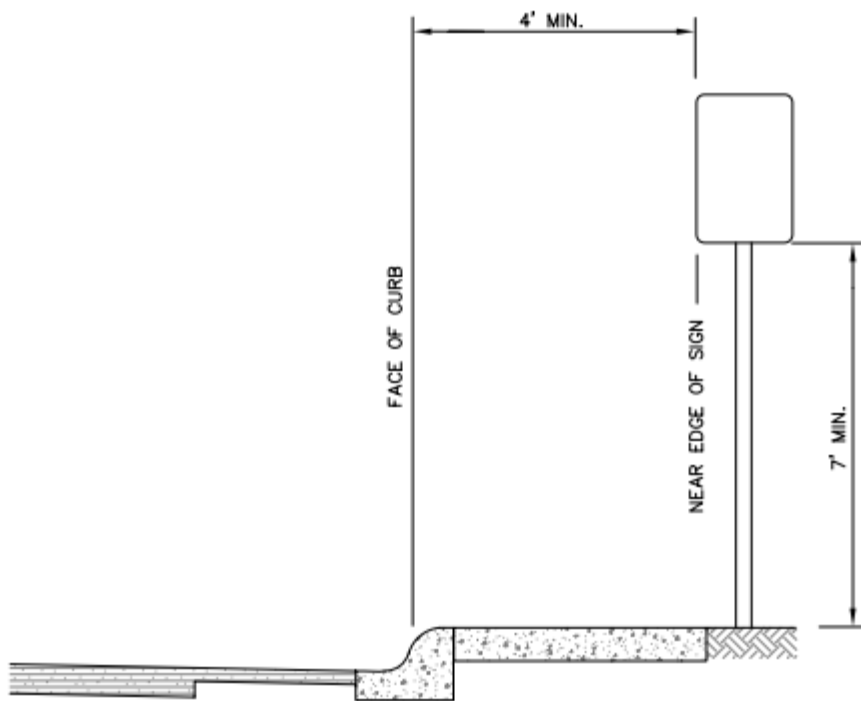


CURB WITH PARKWAY AND SIDEWALK

NOTES:

1. IF PARKWAY IS LESS THAN 5', SIGNS SHOULD BE PLACED BEHIND SIDEWALK.
2. IF SIGNS EXTEND OVER SIDEWALKS, THE MINIMUM VERTICAL CLEARANCE IS 7'-0".
3. IF SIGNS EXTEND OVER BIKE PATHS, THE MINIMUM VERTICAL CLEARANCE IS 8'-0".
4. PAINT ALL SIGN MOUNTING FASTENERS ON SIGN FACE A COLOR MATCHING THE SIGN FACE.
5. ATTACH ALL SIGNS ZEES AND BRACES MOUNTED TO THE POSTS WITH 5/16" BOLTS WITH SELF-LOCKING NUTS.

SEE M.A.S.S. SECTION 70.11 and STD DETAIL 70-24

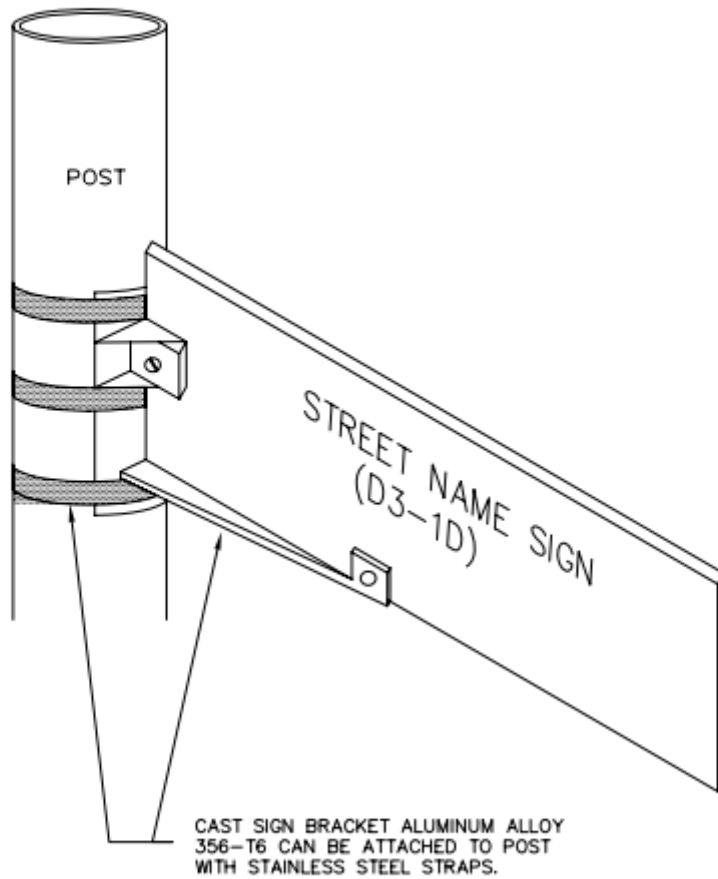


CURB WITH ATTACHED SIDEWALK

NOTE:

1. SIGN FACE SHALL BE PLACED OUTSIDE SIDEWALK EXCEPT WHEN ROW LIMITATIONS EXIST; FOR EXAMPLE IN THE CENTRAL BUSINESS DISTRICT OR OTHER SIMILAR DISTRICTS.

SEE M.A.S.S. SECTION 70.11 and STD DETAIL 70-25



SEE M.A.S.S. SECTION 70.11 and STD DETAIL 70-30