

Appendix L3
Anchorage 2000 Land Cover Maps

Eagle River Impervious Surfaces

Legend

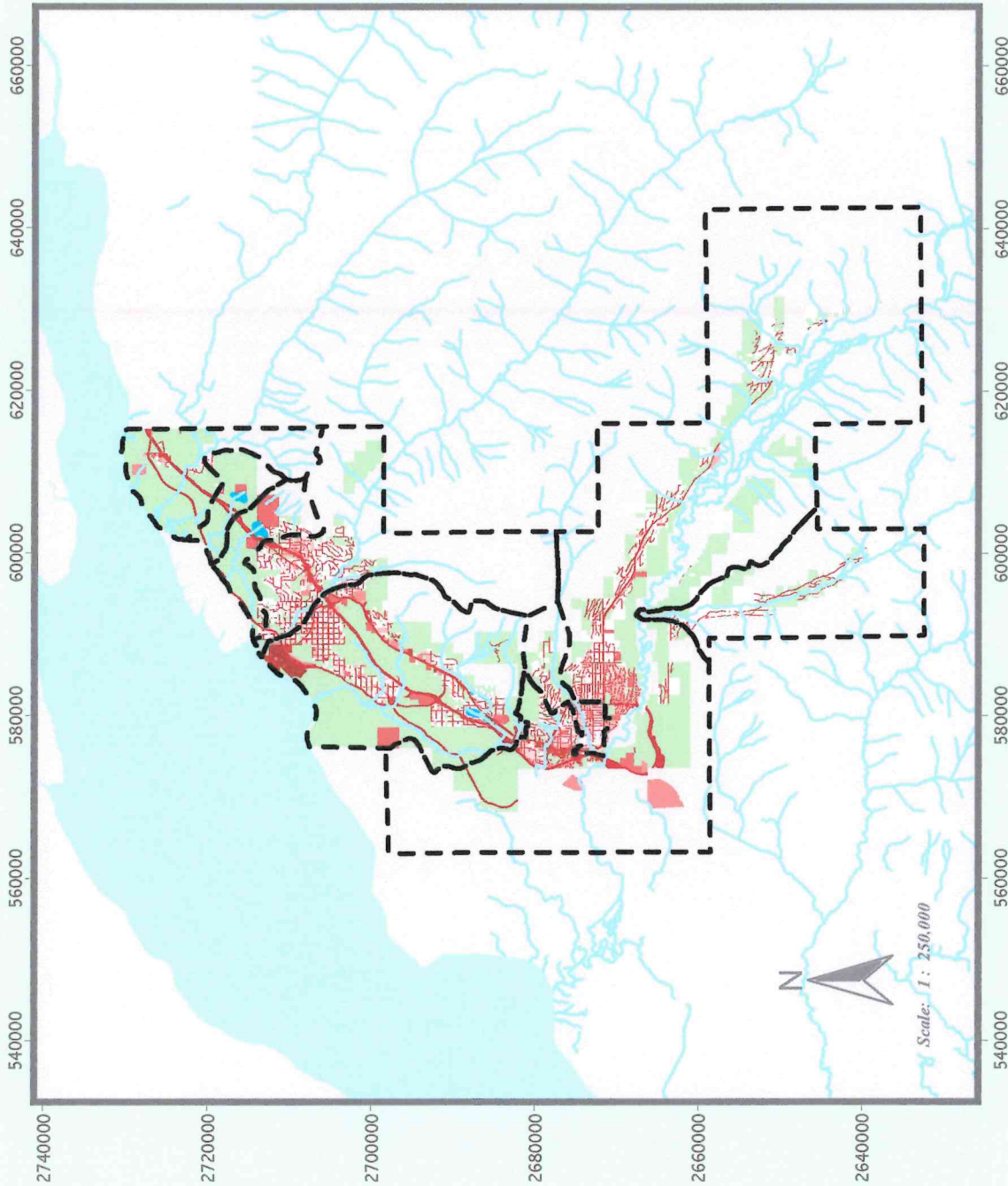
Watershed Management Units

Streams

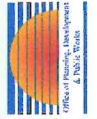
Lakes

Impervious Values

0 %
10 %
30 %
45 %
60 %
75 %
90 %
95 %
100 %



This map is designed to meet the business needs of the Municipality's NPDES storm water permit and may not be suitable for other applications. For current source land use data, refer to the Municipal corporate database (Municipal Planning Dept.)



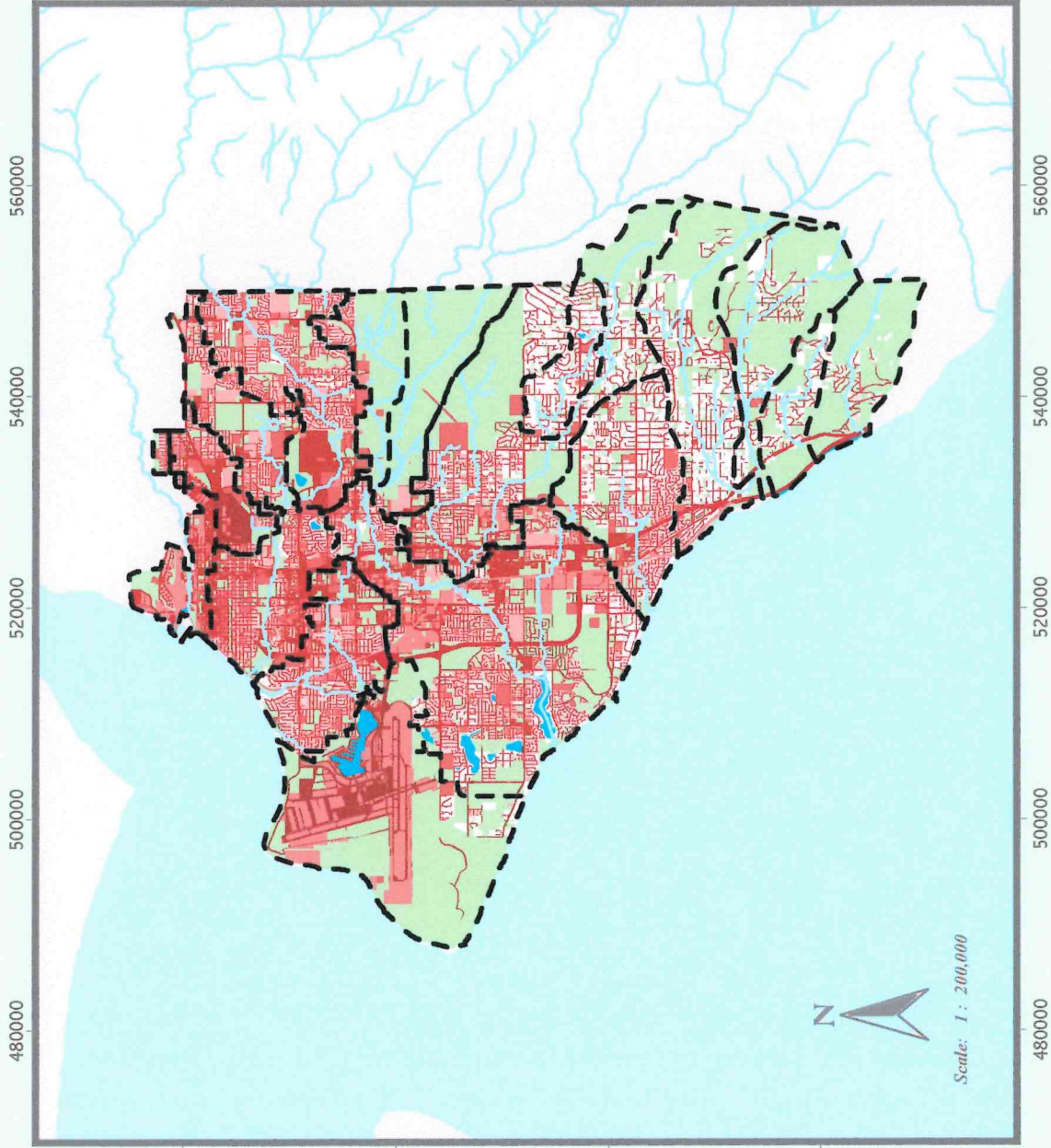
Anchorage Impervious Surfaces

Legend

- Watershed Management Units
- Streams
- Lakes

Impervious Values

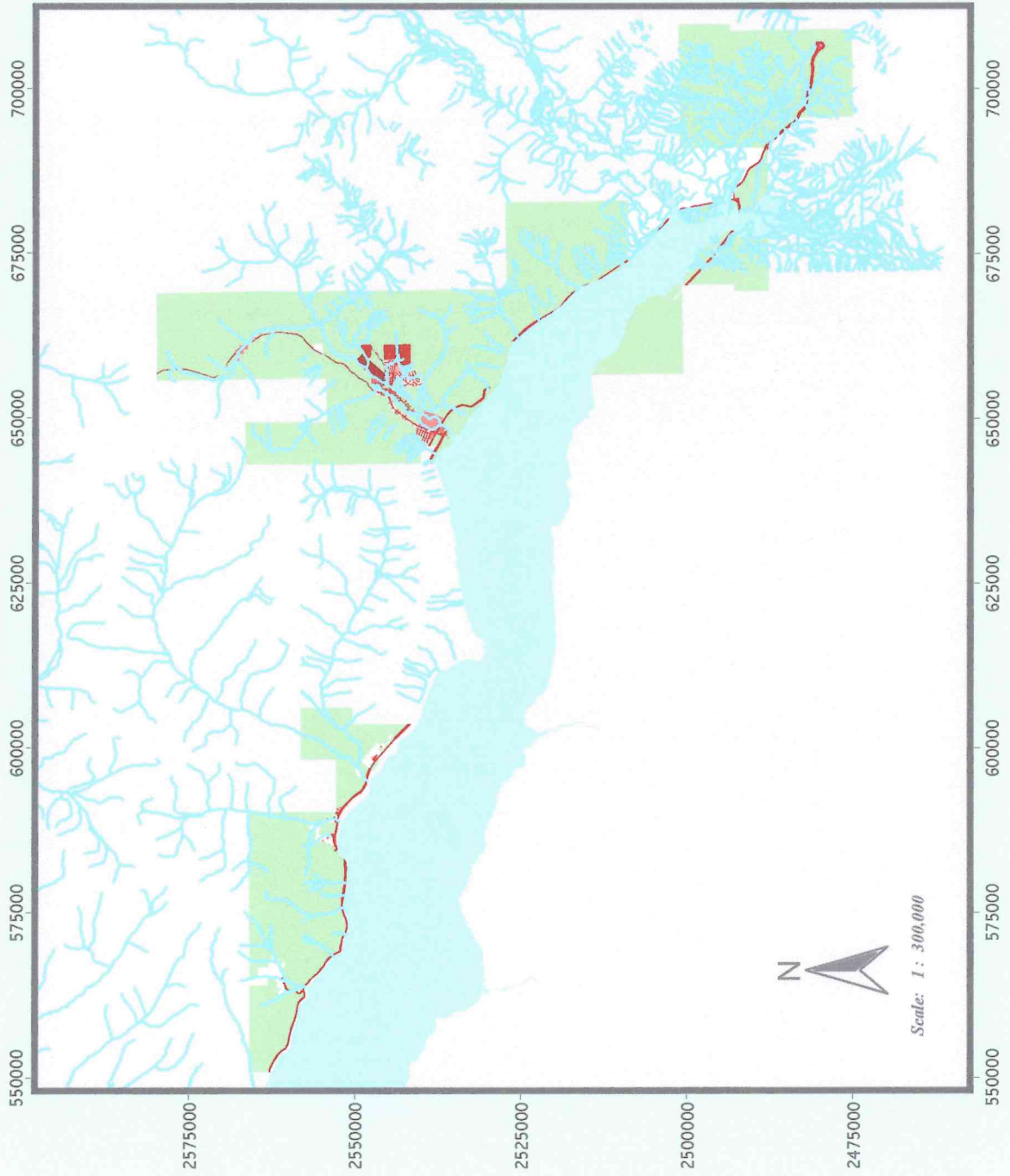
0 %
10 %
30 %
45 %
60 %
75 %
90 %
95 %
100 %



This map is designed to meet the business needs of the Municipality's NPDES storm water permit and may not be suitable for other applications. For current source land use data, refer to the Municipal corporate database (Municipal Planning Dept)



Turnagain Impervious Surfaces



Legend

Streams

Impervious Values

- 0 %
- 10 %
- 30 %
- 45 %
- 60 %
- 75 %
- 90 %
- 95 %
- 100 %

This map is designed to meet the business needs of the Municipality's NPDES storm water permit and may not be suitable for other applications. For current source land use data, refer to the Municipal corporate database (Municipal Planning Dept.)

