

Anchorage MS4 Street Sweeping Report for 2012

WMS Document No. CPr13001

MUNICIPALITY OF ANCHORAGE
WATERSHED MANAGEMENT PROGRAM

December 2012

Anchorage MS4 Street Sweeping Report for 2012

Document No. WMP CPr13001
WMS Project No. 95003

December 2012

Prepared for: Anchorage MS4 Co-Permittees:
Alaska Department of Transportation and Public Facilities
Municipality of Anchorage

Prepared by: Watershed Management Section
Public Works Department
Project Management & Engineering

ANCHORAGE MS4 STREET SWEEPING REPORT FOR 2012

TABLE OF CONTENTS

1.	PURPOSE.....	1
2.	STREETS AND PARKING LOTS DESIGNATED FOR SWEEPING.....	2
2.1.	TECHNICAL FEASIBILITY FOR SWEEPING.....	2
2.2.	DESIGNATED STREETS FOR 2012 SWEEPING	3
2.3.	DESIGNATED LARGE PUBLIC PARKING LOTS	4
3.	2012 SWEEPING PERFORMANCE REPORTS.....	7
3.1.	STREET SWEEPING PERFORMANCE REPORTS FOR 2012.....	7
3.2.	PARKING LOT SWEEPING PERFORMANCE REPORT FOR 2012.....	10
3.3.	PARTICLE SIZE DISTRIBUTIONS FOR SWEPT MATERIALS.....	11
4.	2012 SWEEPING PERFORMANCE ASSESSMENT	13
4.1.	SUMMARY OF FINDINGS FROM PREVIOUS SWEEPING ASSESSMENTS	13
4.2.	UNIT LOAD COMPARISON 2010-2012	17
4.3.	SWEEPING EFFECTIVENESS ASSESSMENT FOR 2012	18
5.	2012 MAPS AND DATA TABLES.....	20
5.1.	DESIGNATED STREETS AND GENERAL LOCATION MAPS	20
5.2.	ANCHORAGE MS4 DETAILED SWEEPING RECORDS FOR 2012.....	29
5.2.1.	<i>DOT 2012 Detailed Sweeping Reports.....</i>	<i>30</i>
5.2.2.	<i>CBERRRSA 2012 Detailed Sweeping Reports.....</i>	<i>33</i>
5.2.3.	<i>ARDSA 2012 Detailed Sweeping Reports.....</i>	<i>36</i>
5.2.4.	<i>ASD 2012 Detailed Sweeping Reports.....</i>	<i>60</i>
5.2.5.	<i>2012 Changes to Sweeping and Basis for Changes.....</i>	<i>62</i>

LISTS OF FIGURES AND TABLES

FIGURES:

FIGURE 3-1 REPRESENTATIVE PSD OF SWEEPED MATERIALS	11
FIGURE 4-1 ANCHORAGE STREET SEDIMENT LOADING DATA: 1996.....	13
FIGURE 5-1 ANCHORAGE MS4 SWEEPING ‘GENERAL LOCATIONS’	21
FIGURE 5-2 MOA_ARDSA, SOUTH—2012 DESIGNATED SWEEPED STREETS	22
FIGURE 5-3 MOA_ARDSA, NORTH—2012 DESIGNATED SWEEPED STREETS.....	23
FIGURE 5-4 CBERRRSA, NORTH—2012 DESIGNATED SWEEPED STREETS.....	24
FIGURE 5-5 CBERRRSA SOUTH—2012 DESIGNATED SWEEPED STREETS	25
FIGURE 5-6 AKDOT AREA A—2012 DESIGNATED SWEEPED STREETS.....	26
FIGURE 5-7 AKDOT AREA B—2012 DESIGNATED SWEEPED STREETS.....	27
FIGURE 5-8 AKDOT AREA C—2012 DESIGNATED SWEEPED STREETS.....	28

TABLES:

TABLE 2-1 LARGE PUBLIC PARKING LOTS (MOA).....	5
TABLE 3-1 ANCHORAGE MS4 SWEEPING SUMMARY, 2012.....	9
TABLE 4-1 2011 STREET SEDIMENT LOADING SAMPLING RESULTS	16
TABLE 4-2 2010-2012 UNIT LOAD COMPARISON	17
TABLE 5-1 DOT SPRING 2012 SWEEPING REPORT	30
TABLE 5-2 DOT SUMMER 2012 SWEEPING REPORT.....	31
TABLE 5-3 DOT FALL 2012 SWEEPING REPORT.....	32
TABLE 5-4 CBERRRSA SPRING 2012 SWEEPING REPORT.....	33
TABLE 5-5 CBERRRSA SUMMER 2012 SWEEPING REPORT	34
TABLE 5-6 CBERRRSA FALL 2012 SWEEPING REPORT	35
TABLE 5-7 ARDSA SPRING 2012 SWEEPING REPORT	36
TABLE 5-8 ARDSA SUMMER 2012 SWEEPING REPORT	44
TABLE 5-9 ARDSA FALL 2012 SWEEPING REPORT	52
TABLE 5-10 ASD 2012 SWEEPING REPORT	60
TABLE 5-11 CBERRRSA 2012 CHANGES TO SWEEPED STREETS	62
TABLE 5-12 DOT 2012 CHANGES TO SWEEPED STREETS	64

Anchorage MS4 Street Sweeping Report for 2012

1. Purpose

Alaska Pollutant Discharge Elimination System (APDES) Permit No. AKS-052558, Article II, Part B, Section 4.d(ii)-(v) requires the permittees, the Municipality of Anchorage (MOA) and the State of Alaska Department of Transportation and Public Facilities (DOT), to inventory and designate arterial and residential streets and large parking lots within the Anchorage Municipal Separate Storm Sewer System (MS4) for sweeping maintenance; to record and report sweeping performed along these systems on an annual basis; and to annually assess these sweeping practices relative to minimization of pollutant discharges from these systems into receiving waters. Specifically, permittees are required to submit:

- Sweeping maps: each year permittees must submit maps of the streets and parking lots that have been designated for sweeping that year and their proposed sweeping frequency relative to the frequencies specified in this permit. Permittees must also designate those streets that they deem 'technically infeasible' for sweeping.
- Sweeping records: permittees must submit annual records of the sweeping practices used, and the curb miles and volumes of materials swept for street and parking lots organized by sweeping event, general location, and sweeping frequency class. Analyses of particle size distributions for samples representative of swept materials must also be submitted.
- Sweeping assessment: permittees must annually prepare an assessment on the basis of submitted sweeping records of the effectiveness of MS4 sweeping completed that year in minimizing pollutant discharges to storm drains and receiving waters.

The permittees have completed and compiled these inventories, records and assessments and submit summaries of these data and findings in this report in compliance with this permit part. The report is organized into five major sections. Section 1.0 summarizes the purpose of this report. Section 2.0 identifies 2012 swept streets as well as those streets designated infeasible for sweeping. Section 3.0 summarizes sweeping records for 2012. Section 4.0 summarizes an assessment of the permittees' sweeping effectiveness for this year. Section 5.0 includes maps and additional summary tables described in Sections 2.0 through 4.0.

2. Streets and Parking Lots Designated for Sweeping

Permit Part II.B.4.d(i) requires permittees to map all streets and large public parking lots to be swept in the coming year and designate their assigned sweeping frequency relative to permit requirements. Further, Part II.B.4.d(iv) requires that permittees designate streets that are technically infeasible for sweeping and specify why. Finally Part II.B.4.d(v) requires that permittees annually ‘..identify any significant changes..’ in mapping of ‘..residential, arterial, and public parking lots..’ subject to regular sweeping under the permit and ‘..the basis for those changes.’ The following section summarizes this information. Section 2.1 identifies types of streets deemed technically infeasible for sweeping by the permittees. Section 2.2 identifies streets designated for sweeping within each of the permittees’ jurisdictions, and the sweeping management areas (‘general locations’) that the permittees’ use to organize sweeping efforts. Section 2.3 identifies the public parking lots designated as large and swept by the permittees. Any changes in swept features and the basis for those changes are also summarized in Section 2.2 and 2.3.

2.1. *Technical Feasibility for Sweeping*

Permittees must document areas where street sweeping is technically infeasible and why (Part II.B.4.d(iv)). The permittees specify the technical infeasibility of regularly sweeping a street based on two factors: surface type and cases where the combined character of speed, access and drainage type make regular sweeping unnecessary, disruptive and/or dangerous.

Unpaved road surfaces are not technically feasible for sweeping. Such surfaces of course will include dirt and gravel roadways but include as well those whose surfaces have been treated with applications of chemicals or asphaltic or other mixtures to create a smooth and temporarily hardened surface. Treatment typically results in only a short-term hardening of the road surface with a primary intent of smoothing the road surface for traffic over the summer season. However, the treatment also serves to temporarily bind particles to reduce dust and erosion. Sweeping can speed deterioration of these surfaces and increase mobilization of fines during runoff. Therefore, these roads are not swept but may be periodically re-graded or re-treated to reduce erosion and dust generation.

High-speed, high-traffic roadways (freeways and expressways), where access is limited and drainage is provided by open channels on both sides of the road, are also not regularly swept. Regular sweeping along these street segments is considered both technically infeasible and unnecessary. Regular sweeping is technically infeasible along these roadway segments because of the speed and volume of the traffic. Regular sweeping activity along these segments would present unpredictable danger to traffic as a slow-speed obstruction. It would also obviously limit for prolonged periods of time the utility of these roadways as high-speed thoroughways. From a more practical standpoint, regular sweeping along these segments is also generally unnecessary. Winter traction sand applications along these segments is less frequently done, significantly reducing sediment loading on the roadway. The sediment that does accumulate is rapidly removed

Anchorage MS4 Street Sweeping Report for 2012

by high-speed traffic along these segments. Wind and wheel energy generated by traffic very effectively move particulates off the paved surface and onto vegetated shoulder and median areas where these materials are collected on a seasonal or as-needed basis during shoulder maintenance.

2.2. Designated Streets for 2012 Sweeping

Permittees are required to identify and map all streets designated for sweeping and provide maps of streets swept in an annual report of these activities (II.B.4.d)(i) and (v)). Any changes in swept features and the basis for those changes must also be summarized. Sweeping for different parts of the Anchorage MS4 are performed by different operators, based on the jurisdictions of the MS4 owners (DOT and MOA) and the maintenance authorities assigned to different operators by the owners. Initial maps of Anchorage MS4 streets and public parking were compiled and submitted in the permittees' document 'Street Sweeping Management Plan: Anchorage MS4, November 2011', Appendix A (hereinafter, MS4 Sweeping Plan).

Through various means the owners, MOA and DOT, assign maintenance administrative authorities for the Anchorage MS4 to different agencies. Each maintenance administrative agency is assigned a specific geographic area covering different portions of the Anchorage MS4 and public parking facilities. DOT assigns maintenance authority for its entire Anchorage MS4 jurisdiction to its Maintenance & Operations Division, Central Region (DOT). MOA assigns maintenance authorities for various portions of its MS4 jurisdiction to different roads and drainage 'service areas', or to particular segments of streets and roads, through Municipal administrative and Assembly-codified authorizations. The primary maintenance administrative authorities (maintenance operators) for the Anchorage MS4 facilities regulated under II.B.4.d) include:

- The MOA Public Works Maintenance & Operations Division (ARDSA)
- The MOA Chugiak Eagle River Rural Road Service Area (CBERRRSA)
- The MOA Public Works Administration Division (PWA)
- The MOA Anchorage School District (ASD)
- The MOA Parks and Recreation Department (Parks).

Individual maintenance administrative authorities may further divide their assigned regions into smaller operational areas, which are roughly equivalent to the 'general locations' as specified in the permit at II.B.4.d.(v). These operational areas are used in this document as the basis for permit-required sweeping reporting. Each maintenance authority also designates streets within its region for sweeping (based on guidelines provided by the MS4 owners and as required by the MS4 storm water permit). Operational areas ('general locations') are shown in Figure 5-1 and streets that were designated for sweeping in 2012 are shown in Figures 5-2 through 5-8 in Section 5.1 for each of the primary maintenance administrative agencies for the Anchorage MS4.

Changes in mapping of streets designated for sweeping have been made during the 2012 reporting period reflecting both changes in features swept as well as in criteria used to classify a designated street to a particular EPA street sweeping frequency category (i.e.,

Anchorage MS4 Street Sweeping Report for 2012

arterial or residential). Changes in streets swept are tabulated in Tables 5-11 and 5-12 in Section 5.2.5 and are summarized below.

ARDSA reported no changes in management practices or streets designated for sweeping from its 2011 reporting period.

In 2012 CBERRRSA added 11 new street segments to its sweeping list (Table 5-11) as a result in changes in sweeping feasibility (road surfacing changes and new road construction), and jurisdictional agreements with DOT. It corrected its records by removing 6 segments that had been double entered in its 2011 list (resulting in no change in actual sweeping activities). It removed 3 street segments from its sweeping list as gravel road surfaces made them technically infeasible for sweeping, and removed 1 other street segment from the list because it had been converted to a pedestrian walkway and was no longer an active roadway. It reported 109 street segments had a change in sweep practice in 2012, swept using kick brooms in 2011 and swept using mechanical sweepers and tandem vacuum trucks in 2012 (and in future years), in order to increase overall sweeping efficiency. Additionally, CBERRRSA changed the operational area designation of 12 street segments to improve the efficiency of sweeping routes (resulting in no change in the amount of street segments swept).

In 2012 DOT reports it added 6 new street segments to its inventory of streets it is responsible for sweeping (Table 5-12), and all were swept according to their frequency class in 2012. It removed 7 street segments from its sweeping list deemed technically infeasible for sweeping as “road segments [are] part of open channel, high speed throughway route and [were] removed from regular sweeping (see Section 2.1)”. Additionally, 1 street segment was removed from the sweeping list as sweeping jurisdiction for the segment was transferred to CBERRRSA in 2012 (and in future years). Otherwise, DOT reported no changes in swept streets or management practices from its 2011 reporting period.

2.3. Designated Large Public Parking Lots

Section II.B. 4.d specifies that permittees must identify and designate those large parking lots for sweeping that serve schools, cultural facilities, plazas, sports and event venues and similar facilities. The permittees have interpreted a large public parking lot to be any such lot that has a total exposed parking footprint within a single parcel or a complex of closely associated parcels of 2 acres or larger (see the Anchorage MS4 Sweeping Plan, p4).

DOT identified no DOT-owned public parking lots that met these criteria. MOA identified 62 large public lots meeting these criteria. Maps showing location of these lots are included as Appendix C in the MS4 Sweeping Plan. The designated MOA large public parking lots serve 51 schools, 9 parks, one cultural facility and one events venue. The median size of all 62 designated MOA large public parking lots is 2.5 acres. The largest lot is approximately 13.3 acres in size with only four lots 10 acres or larger in

Anchorage MS4 Street Sweeping Report for 2012

size. Four of the designated lots are between 5 and 10 acres in size, 15 lots are 3 to 5 acres in size, and 39 lots are 2 to 3 acres in size. No changes were made to the large parking lot sweeping list for 2012. Table 2-1 below lists all large public parking lots currently identified by the permittees.

Table 2-1 Large Public Parking Lots (MOA)

Name	Type	Area, ft ²
Hilltop Ski Area	Park	88000
Ravenwood Elementary	School	89075
Girdwood K-8 School	School	89969
Davis Park	Park	90000
Muldoon Elementary	School	92049
Turnagain Elementary	School	93900
Susitna Elementary	School	94200
Harry J. McDonald Memorial Center	Park	95000
Mountain View Elementary	School	95101
Huffman Elementary	School	95228
Ruth Arcand Park	Park	96000
Rogers Park Elementary	School	96305
Polaris K-12 School	School	97293
Wonder Park Elementary	School	97567
Williwaw Elementary	School	97956
O'Malley Elementary	School	98189
Bear Valley Elementary	School	98474
Rabbit Creek Elementary	School	99865
Far North Bicentennial/ Hillside Park	Park	100500
Mears Middle School	School	102000
Alpenglow Elementary	School	102825
Trailside Elementary	School	103834
Campbell Elementary	School	104000
Eagle River Lion's Club	Park	104000
Gladys Wood Elementary	School	104344
Bowman Elementary	School	106000
Spring Hill Elementary	School	106000
Lake Otis Elementary	School	106173
North Star Elementary	School	106780
Bayshore Elementary	School	106792
Northern Lights ABC School	School	108974
Albrecht Field	Park	113300
Lake Hood Elementary	School	114600
Central Middle School/Chugach Optional Elementary	School	116792
Northwood ABC Elementary	School	118491
Birchwood ABC Elementary	School	119236
Kasuun Elementary	School	119441
Tyson Elementary	School	120690
Willow Crest Elementary	School	124285
Russian Jack Elementary	School	128685
South Anchorage Sports Park	Park	140000

Anchorage MS4 Street Sweeping Report for 2012

Name	Type	Area, ft ²
Chugiak Elementary	School	140875
Loussac Library	Cultural	141000
King Career Center	School	144663
Kincaid Park	Park	145000
Gruening Middle School	School	150000
Kincaid Elementary	School	152789
Clark Middle School	School	168224
Hanshew Middle School	School	169175
Romig Middle/ West High Schools	School	176826
Begich Middle School	School	177442
Wendler Middle School	School	193293
Goldenview Middle School	School	201993
Mirror Lake Middle School	School	203260
Eagle River High School	School	275595
Chugiak High School	School	325000
South High School	School	340669
Bartlett High School	School	412961
Sullivan/Boeke Arenas	Events	457000
East High School	School	459000
Service High School	School	473795
Dimond High School/Chinook Elementary	School	580883

3. 2012 Sweeping Performance Reports

Permit Part II.B.4.d)(v) requires permittees to report sweeping performance annually in terms of specific factors and to assess sweeping effectiveness in minimizing discharge of pollutants to storm drains and creeks based on those factors. Sweeping performance reports must at minimum identify and map the actual streets and parking lots that were swept in the reporting year. In addition, permittees must compile and report specific sweeping performance factors including:

- Sweeping practices used,
- Swept ‘curb miles’,
- Volume or weight of swept materials, and
- Particle size distributions of representative swept materials.

The permit specifies that sweeping performance information is to be organized and reported, in some respect, by date, general location, and sweeping ‘frequency category’ (defined in the permit as Arterial or Residential streets, and Parking). However, whatever the exact organizational structure elected by the permittees for the performance report information, all these factors are specifically to be used in assessing the effectiveness of MS4 sweeping on limiting discharge of pollutants to the MS4 and receiving waters. This section summarizes sweeping performance records sorted by maintenance agency for both streets (Subsection 3.1) and parking (Subsection 3.2). Subsection 3.3 describes particle size distribution measures for street materials swept by each of the operating agencies. In Section 4, we use these performance records, along with other information, to assess effectiveness of the 2012 MS4 sweeping programs.

3.1. Street Sweeping Performance Reports for 2012

The permittees have organized their sweeping performance data to reflect both significant differences in drainage types across the MS4 and variations in street sediment loading between those drainage types. As described in their MS4 Sweeping Plan, the permittees use different sweeping practices for streets having curb and gutter (CG) drainage as opposed to those having open channel (OC) or ditch drainage. For streets with curb and gutter drainages, sediments are concentrated along the gutter pan and readily available for mobilization in washoff events. For these streets, swept materials are always collected during sweeping, and the removed volumes can be readily inventoried. Conversely, sediments from streets with open channel drainages tend to become concentrated onto the adjacent vegetated shoulders where runoff events are much less likely to mobilize them. Along these streets the most common sweeping practices are ones that ‘kick’ the sediments left on the street pavement onto the same vegetated shoulder (to be removed during later shoulder maintenance and ditch ‘dressing’). As a result, inventories of the volumes of sediment swept from open channel streets are usually not available, at least not as part of sweeping performance records.

Given these practices, reporting sweeping information for curb miles alone, as the permit specifies, is problematic. Reporting only those streets having ‘curb miles’ (i.e., curb and gutter type streets) as specified in the permit would obviously bias measurement of total Anchorage MS4 sweeping performance. Similarly, using total street miles when

Anchorage MS4 Street Sweeping Report for 2012

assessing the total volume of swept materials will bias loading and efficiency estimates when the only swept sediment volumes recorded are for curb and gutter streets but open channel street miles are included in the analysis. Finally, potential for biasing analysis is even further compounded considering differences in sediment loading between drainage types (and sweeping frequency categories).

To control for these sweeping practices and characteristics, sweeping performance information for Anchorage MS4 streets is collected and sorted by a number of factors. These include sweeping frequency type and drainage type, the MS4 maintenance operator, the sweeping event (measured by the sweeping completion date range, spring, summer, fall), and the operational area ('general location'). Sweeping frequency types include 'arterial' and 'residential' categories as already described in the permittees MS4 Sweeping Plan.

Sweeping performance information reported for the Anchorage MS4 includes total swept volumes (in cubic yards) referenced to operational areas ('general locations' in the permit language) and to 'Street Miles', 'Curb Miles', and 'PickUp Miles'. 'Street Miles' for all designated swept streets are included in this performance report and are calculated as the total centerline lengths of swept street segments. Where a 'kick' type of sweeping practice is used along open channel roads (i.e., swept sediments are not collected), total swept volume will not be known and Street Miles is the only sweeping information reported. Any estimate of swept volumes for these streets must be calculated using the swept mileage and an estimate of street sediment loading present at the time of the sweeping event for the particular sweeping frequency category (arterial or residential). In instances where practices are used along open channel roads that do collect swept materials (i.e., swept volumes are inventoried), 'PickUp Miles' are reported in this inventory. PickUp Miles, similar to Curb Miles defined below, optimally represent the total actual length of road shoulder swept. Where this is not known, PickUp Miles are estimated as twice the length of the swept streets along which the sediments are collected. Finally, 'Curb Miles' in this performance report optimally represent the total actual lengths of curbed drainage swept. Where swept Curb Miles for a designated street are not known, they are estimated, similar to PickUp Miles, as twice the measured street miles. Where possible, the Anchorage MS4 sweeping performance report also includes an estimate of the unit swept volume (cubic yards per Curb Mile or per PickUp Mile) for each combination of frequency type and drainage type.

2012 sweeping performance records for the principle Anchorage MS4 street maintenance operators (DOT, ARDSA, and CBERRRSA) are summarized for all three sweeping events in Table 3-1 below. Note that the two tandem sweeps required for arterial frequency category streets are summarized under the single spring event shown. Operational areas ('general locations') for these maintenance operators are as described in Section 2.2. More detailed sweeping summary tables for each of the maintenance operators are included in Section 5.2, including all required permit reporting elements.

In general in 2012 all Anchorage MS4 operators completed sweeping of designated streets in accordance with permit requirements using the various practices as described in

Anchorage MS4 Street Sweeping Report for 2012

the previously published MS4 Sweeping Management Plan. Sweeping completeness for designated streets overall was high though this varied somewhat from operator to operator (see detailed records for each operator in Section 5.2).

Table 3-1 Anchorage MS4 Sweeping Summary, 2012

Spring 2012						
	EPA Category	Drainage Type	Street Miles	Curb/PickUp Miles	Total Volume* (cyds)	Unit Volume* (cyds/mile)
DOT	Arterial	OC	8.3	10.7	130.0	12.1
		CG	36.8	98.1	3476.0	35.4
		Mixed	43.2	118.1	2964.0	25.1
	Residential	OC	53.3	106.6	736.0	6.9
		CG	4.1	12.0	282.0	23.6
		Mixed	30.3	62.9	766.0	12.2
ARDSA	Arterial	OC	0.0			
		CG	40.8	131.8	2688.1	20.4
		Mixed			113.8	
	Residential	OC	112.5		43.3	
		CG	464.7	837.7	1227.5	15.4 ¹
		Mixed			9367.8	
CBERRRSA	Residential	OC	166.0	98.9	576	5.8
		CG	26.7	53.4	567	10.6
		Mixed	8.3	16.6	42	2.5
Summer 2012						
	EPA Category	Drainage Type	Street Miles	Curb/PickUp Miles	Total Volume* (cyds)	Unit Volume* (cyds/mile)
DOT	Arterial	OC	8.3	10.7	37.0	3.5
		CG	36.8	98.1	462.0	4.7
		Mixed	43.2	118.1	358.0	3.0
	Residential	OC	53.3	106.6	262.0	2.5
		CG	4.1	12.0	52.0	4.3
		Mixed	30.3	62.9	196.0	3.1
ARDSA	Arterial	OC	0.0			
		CG	40.8	131.8	533.8	4.1
		Mixed			16.3	
	Residential	OC	112.5		0.5	
		CG	464.7	837.7	208.0	2.6 ¹
		Mixed			1884.4	
CBERRRSA	Residential	OC	156.1	77.9	117	1.5
		CG	22.2	44.3	144	3.3
		Mixed	22.6	45.2	36	0.8

Anchorage MS4 Street Sweeping Report for 2012

Fall 2012						
	EPA Category	Drainage Type	Street Miles	Curb/PickUp Miles	Total Volume* (cyds)	Unit Volume* (cyds/mile)
DOT	Arterial	OC	8.3	10.7	37	3.5
		CG	36.8	98.1	668	6.8
		Mixed	43.2	118.1	618	5.2
	Residential	OC	53.3	106.6	367	3.4
		CG	4.1	12.0	51	4.3
		Mixed	30.3	62.9	246	3.9
ARDSA	Arterial	OC	0.0			
		CG	40.8	131.8	371.9	2.8
		Mixed			13.0	
	Residential	OC	112.5		1.9	
		CG	464.7	837.7	569.3	7.2 ¹
		Mixed			2407.7	
CBERRRSA	Residential	OC	153.3	74.3	60	0.8
		CG	19.5	39.1	78	2.0
		Mixed	26.5	53.0	42	0.8

1..inferred results: All ARDSA data reported in mixed drainage format. <10% data suitable for drainage type inference and analysis.

* Volumes represent only swept materials collected along reported/estimated Curb/PickUp Miles
Estimated volumes will sum to less than reported 'mixed' volume

CBERRRSA achieved 100% completeness with no reported road segments or operational areas falling below permit sweep frequency requirements. DOT reported 100% completeness for all road segments and operational areas for the spring and summer sweep periods. DOT did report that operational area C did not receive its second spring sweep until 6/12/12 (12 days beyond the prescribed spring sweeping period of 4/15-6/1), resulting in 50% completeness for area C for the spring sweep period (though all DOT roads did receive the required number of sweeps for the 2012 reporting period). ARDSA reported a sweeping completeness of 100% for designated streets within its administrative authority for the spring and summer sweep periods, but fell short of completing its fall sweep due to catastrophic wind storms that uprooted trees onto roads and greenbelts causing numerous public safety hazards. ARDSA crews worked exclusively to open rights of ways and eliminate hazards throughout the remainder of the fall sweep period into freezeup, eliminating any further sweeping opportunities. For the fall sweep, ARDSA reported swept volume totals for residential streets in 47 of 60 operational areas, and for arterial streets in 59 of 60 operational areas.

3.2. **Parking Lot Sweeping Performance Report for 2012**

Sweeping performance was reported by the Anchorage School District for all 51 public schools on the large public parking lot list as designated in Section 2.3, for a completion of 100%. No basis for changes in number of swept school parking lots was otherwise submitted. Exact sweeping dates were not reported, though separate volumes of swept

Anchorage MS4 Street Sweeping Report for 2012

material were reported for two sweeping periods, spring and fall, indicating that each of the 51 school lots were swept twice in 2012. Reported total swept volumes for individual parking lots ranged from 5 to 59 cubic yards per lot. Detailed sweeping reports for the large school parking lots are included in Section 5.2. No other reports were submitted for sweeping performed in 2012 for the other large public parking lots as listed in Table 2-1.

3.3. Particle Size Distributions for Swept Materials

Permit requirements at II.B.4.d)(v) require that particle size distribution be evaluated for a representative sample of swept materials. Representative samples of swept street materials (no samples were available from parking lots) were collected by subsampling temporary sweeping storage piles built up by each MS4 operator and the composited samples were then submitted to a certified laboratory for analysis. Particle size distributions representative of samples collected during 2011 sweeping events are included in Figure 3-1 below.

Figure 3-1 Representative PSD of Swept Materials

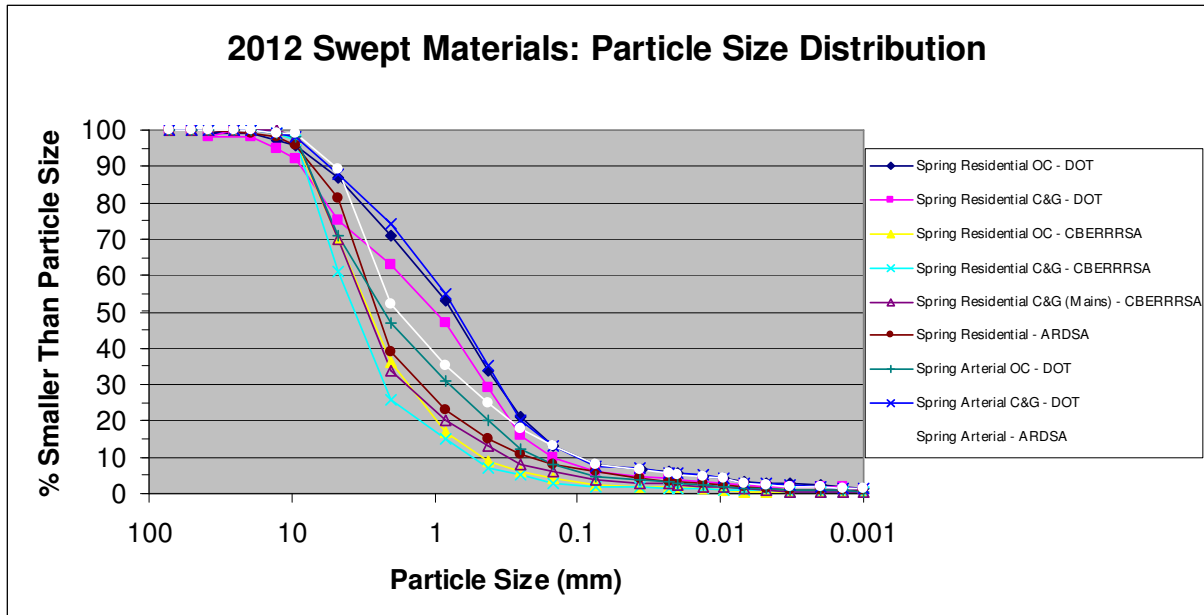


Figure 3-1 includes particle size distributions (PSDs) of samples collected from temporary storage piles generated from street sweeping. In 2010 and 2011, samples were collected from street surfaces before and after each sweeping event, in order to compare pre- and post-sweep street conditions. Analysis of data suggests reduced sweeping practices efficiency in removing the mid-range fine particles—from about 75 to 1000 micron. Available data are inconclusive for estimation of sweeping efficiencies for very fine particles (finer than 75 micron) but do suggest that current sweeping practices may have limited competency at removing particles smaller than 75 micron. Assessment of removal rates for these fine particles would require more resolute sampling for street-collected samples (use of vacuum sampling techniques).

Particle size distributions for 2012 swept materials, collected from street sweeping temporary storage piles, show similar data ranges, but appear to be grouped somewhat by

Anchorage MS4 Street Sweeping Report for 2012

operator. Dirt from CBERRRSA's piles appears to have the highest proportion of coarse grained materials, followed by ARDSA, with DOT having the highest proportion of fined grained materials. This is likely due to differences in original purchase specifications for winter traction sand and to the differences in road speeds typical of each operator's jurisdiction.

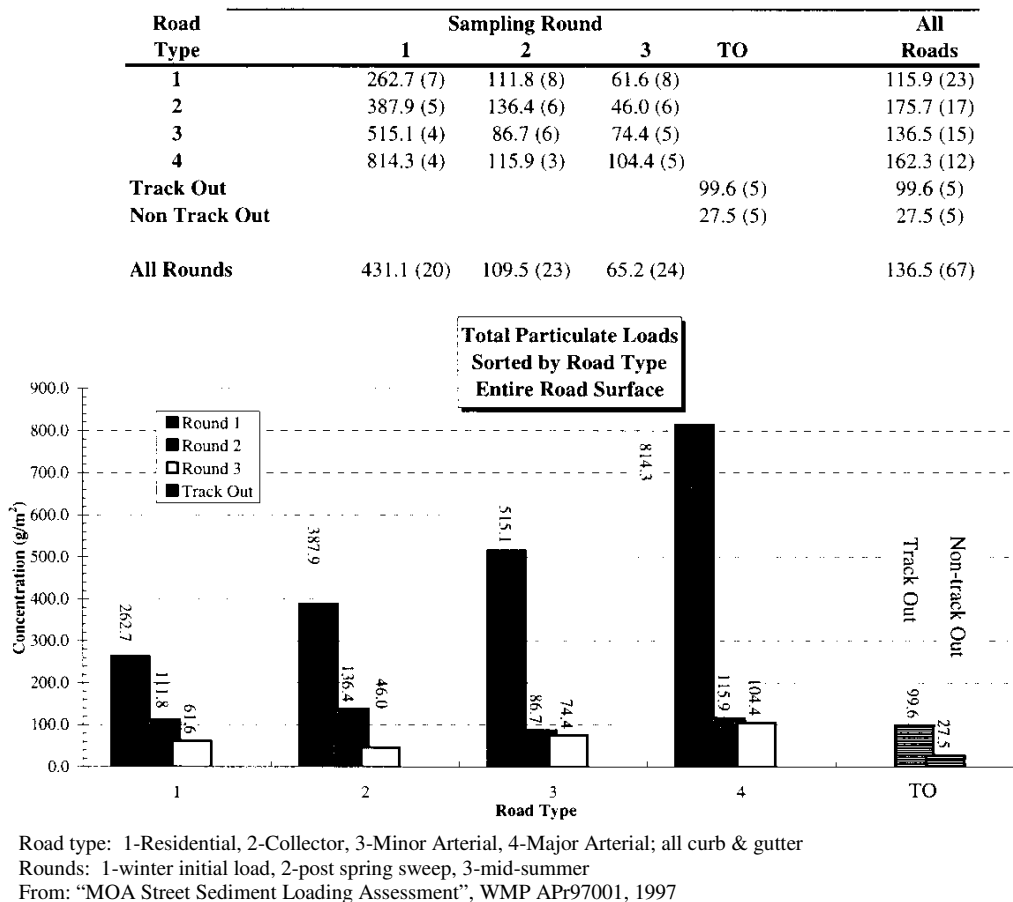
4. 2012 Sweeping Performance Assessment

Part II.B.4.d)(v) requires the permittees to ‘perform annual assessments of street sweeping effectiveness to minimize pollutant discharges to storm drains and creeks’ on the basis of the performance factors required to be reported under the permit. To help in this assessment the permittees completed additional sampling of street sweeping activities in 2010 and 2011 and reviewed sampling efforts and studies performed under earlier Anchorage MS4 permit terms and in other areas nationwide. Section 4.1 summarizes these additional efforts relative to the permittee’s 2011 street sweeping performance. Section 4.2 provides a comparison of unit loads (cubic yards per curb mile and pounds per curb mile) for swept dirt for the years 2010-2012. Based on both this additional information and current performance reports, Section 4.3 summarizes the effectiveness of the permittees’ 2012 sweeping program as required under Part II.B.4.d)(v).

4.1. Summary of Findings from Previous Sweeping Assessments

Street sediment loading data collected in 2011 and in previous Anchorage permit terms were used to support assessment of sweeping effectiveness in 2011 for the Anchorage MS4. These additional data are briefly summarized in this section.

Figure 4-1 Anchorage Street Sediment Loading Data: 1996



Anchorage MS4 Street Sweeping Report for 2012

The permittees have collected significant data characterizing street sediment loading (at similar street strata) and street sweeping performance (at the resolution of overall local practices). Significant street sediment sampling efforts were conducted in 1996 (WMS document WMP APr97001, “MOA Street Sediment Loading Assessment”) and again in 2000 (WMS document WMP APr00003, “Street Sediments and Adsorbed Pollutants”) during the permittees’ first permit term. Later analyses of these data by the permittees specifically addressed street sediment buildup rates (Wheaton et al., op. cit.) and effectiveness of Anchorage street sweeping performance (WMS document WMP APr02002, 2002, “Anchorage OGS and Street Sweeping as Storm Water Controls”). Sampling in all earlier studies was performed only along curb and gutter type drainages and no data was collected for open channel roads. Nevertheless, data for curb and gutter drainage types was thorough and no significant changes have been made in application rates or practices for street sanding since these studies were completed. The sediment loading results reported in the 1996 study is summarized in Figure 4-1. Street sediment loading values in pounds per curb mile can be approximated by multiplying the gm/m² values in Figure 4-1 by 51.2 for residential and collector streets and 77.7 for arterial streets.

The Watershed Management Services section of the Municipality performed additional sampling during 2010 and 2011 to supplement the earlier street sediment loading data and to complement the detailed sweeping performance data collected by the MS4 maintenance operators. Sampling program goals were to approximately quantify sweeping efficiencies and sediment buildup rates between scheduled sweeping events. The sampling strategy applied was to characterize the initial street sediment loading conditions prior to any seasonal sweeping and then estimate sediment loads remaining after each of the seasonal sweeps (relative to each of the major road and drainage type categories).

To achieve this, during the 2010 and 2011 sweeping season WMS sampled transects across select MS4 streets at a total of 118 stations. The stations were selected to broadly represent street frequency category and drainage types (arterial open channel, arterial curb & gutter, collector open channel, collector curb & gutter, residential open channel and residential curb & gutter) from the jurisdictions of all the Anchorage MS4 maintenance operators.

At each station, WMS swept transects 1.5 feet wide across the paved road and gutter surfaces from centerline, or median curb, to outside curb (i.e., one-half of the full curb-to-curb road width at the station) and collected and bagged the materials for later analysis. A systematic photographic record was also made of conditions at each site. Sampling was scheduled at each station immediately prior to initial spring sweeping (to capture the entire winter sediment load remaining on the street after breakup), and then shortly after each of the spring, summer and fall sweep events to measure the sediment load remaining on the street surfaces after sweeping had been completed (based on volumetric analysis of mineral and organic content).

Anchorage MS4 Street Sweeping Report for 2012

All sampling was performed under dry conditions to minimize water content of the collected transect samples. Street sediment samples collected from each swept transect were analyzed by transferring the sample to a graduated cylinder, consolidating the sample by lightly tapping the cylinder, and measuring the total sample volume, in milliliters. After the initial volumetric measurement was made, samples were gently shaken in the cylinder to promote gravimetric separation of any fibrous organics from mineral constituents. Measurements were then made of the volumes of separated fractions of organic and mineral materials. Select samples and composited samples of collected street sediments were also submitted for laboratory testing for coarse- and fine-grain particle size distribution and organic content (by ignition). All results were tabulated and digitally archived.

Quality control review of all data suggests a reasonably comparable, complete, and representative data set was obtained. However, sample populations were small for some street categories, weakening inferences drawn from analyses of a fraction of the collected data. Specifically, small sample populations for some street and drainage categories resulted from a variation in sample collection protocols for these streets. As a result, some of the total sample counts ('n') were significantly reduced for some event/categories (Table 4-1). Specifically, the arterial curb and gutter category for all events is represented by a very small sample population count of 7. As a result of the low sample counts, the arterial curb and gutter data may not be adequate to resolve the normal character of street sediment for this street category. Otherwise, sample populations for all other sweeping event/street categories are considered adequate to provide reasonably representative information at the exploratory level of this investigation.

Summary statistics of the sampling results are tabulated in Table 4-1 below. Original WMS street dirt sampling data is in units of milliliters per 1.5 foot transect sample collected across one-half the curb-to-curb road width at the sample station. However, for ease of comparison to the permittees' street sweeping performance statistics (Section 3) these measurements have been normalized to a 'unit load' in the table in terms of pounds per curb mile. Normalization was done by assuming a porosity for the samples of 0.26 and a specific gravity for the solid materials of 2.67, and then adjusting for the sampled transect area using the following formulas:

$$(\text{mL sample}/1.5' \text{ transect})(0.74)(2.67\text{gm}/\text{cm}^3)(\text{cm}^3/\text{ml})(1\text{lb}/454\text{gm}) = \text{lbs sample}/1.5' \text{ transect}$$

$$\Rightarrow (\text{lbs sample}/1.5' \text{ transect})(2 \text{ transects}/\text{curb-to-curb})(5280' \text{ curb-to-curb}/\text{curb mile}) \cong \text{lbs}/\text{curb mile}$$

Similarly, cubic yards/curb mile (or pick-up mile) as reported in the performance summary in the preceding section can be approximately converted to pounds per curb mile, correcting for voids and neglecting the weight of any water content, as follows:

$$(\text{cyd}/\text{curb mile})(27\text{ft}^3/1\text{cyd})(2.67)(0.74)(62.4\text{lbs}/\text{ft}^3) = \text{lbs}/\text{curb mile}.$$

Anchorage MS4 Street Sweeping Report for 2012

Table 4-1 2011 Street Sediment Loading Sampling Results

		Spring	Spring	Summer	Fall	
		<u>Pre-Sweep</u>	<u>Post-Sweep</u>	<u>Post-Sweep</u>	<u>Post-Sweep</u>	
Unit Load		<i>Lbs/curb mile</i>	<i>Lbs/curb mile</i>	<i>Lbs/curb mile</i>	<i>Lbs/curb mile</i>	
ARTERIAL	OC	<i>Min</i>	704	168	0	0
		<i>Max</i>	37531	5361	1348	2420
		<i>Median</i>	13021	2022	352	827
		<i>n</i>	23	23	19	23
	C&G	<i>Min</i>	2052	337	459	337
		<i>Max</i>	51900	6280	7812	7353
		<i>Median</i>	8885	995	1470	1876
		<i>n</i>	7	8	8	8
COLLECTOR	OC	<i>Min</i>	612	0	0	0
		<i>Max</i>	15012	827	1011	1271
		<i>Median</i>	7582	444	260	321
		<i>n</i>	16	16	16	16
	C&G	<i>Min</i>	2757	367	0	0
		<i>Max</i>	24510	2634	2144	1041
		<i>Median</i>	9421	1087	467	390
		<i>n</i>	18	24	24	24
RESIDENTIAL	OC	<i>Min</i>	0	0	0	0
		<i>Max</i>	17463	2022	2236	1654
		<i>Median</i>	2451	781	643	474
		<i>n</i>	24	24	24	24
	C&G	<i>Min</i>	2068	0	0	122
		<i>Max</i>	16544	3768	3829	1960
		<i>Median</i>	5821	1041	919	643
		<i>n</i>	21	21	21	21

Sampling units – ml sediment/(1.5' wide transect)(½ width curb-to-curb); Unit load – pounds/curb mile; n – sample count

Note that the sediment load per curb miles presented here is generally as described earlier, representing the total sediment present along a road segment, relative to the total length of curb present along that road segment. For our sampling we make the assumption that the total length of curb along our sampled roads is twice the length of the road (i.e., only two curbs are present along the road). Also note that the term ‘curb mile’ in our sampling is used as a generic term to refer to both Curb Miles and Pickup Miles defined earlier for curb and gutter and open channel drainage types, respectively. Finally note that we have not controlled for pavement width (for example, the number of trafficking lanes, parking lanes, turn-out lanes, median lanes, etc.) except for that that is inherent in the sweeping frequency categories used (arterial, collector, residential). However, at the scale of this analysis (areawide and at two levels of traffic load), we believe these data to be usefully representative.

Anchorage MS4 Street Sweeping Report for 2012

4.2. Unit Load Comparison 2010-2012

Swept volume data, collected over the past three years, have been analyzed and where possible have been converted to unit load values (cyds/curb or pick up mile), to give a measure of what volume of dirt is being swept up per curb mile for each different operator and sweep frequency category. Cubic yards per curb mile can then be converted to pounds per curb mile using the formula described in Section 4.1. Table 4.2 shows unit load in both cubic yards per curb mile and pounds per curb mile for the summer and fall sweep periods for 2010, 2011, and 2012.

Table 2-2 2010-2012 Unit Load Comparison

Year: 2012			Summer 2012	Summer 2012	Fall 2012	Fall 2012
Operator	EPACategory	DrainageType	UnitVolume(cyds/mile)	UnitWeight(lbs/mile)	UnitVolume(cyds/mile)	UnitWeight(lbs/mile)
DOT	Arterial	OC	3.5	11650.90	3.5	11650.90
		C&G	4.7	15645.49	6.8	22636.03
		Mixed	3	9986.48	5.2	17309.90
	Residential	OC	2.5	8322.07	3.4	11318.01
		C&G	4.3	14313.96	4.3	14313.96
		Mixed	3.1	10319.37	3.9	12982.43
ARDSA	Arterial	C&G	4.1	13648.19	2.8	9320.72
	Residential	C&G	2.6	8654.95	7.2	23967.56
CBERRRSA	Residential	OC	1.5	4993.24	0.8	2663.06
		C&G	3.3	10985.13	2	6657.66
		Mixed	0.8	2663.06	0.8	2663.06

Year: 2011			Summer 2011	Summer 2011	Fall 2011	Fall 2011
Operator	EPACategory	DrainageType	UnitVolume(cyds/mile)	UnitWeight(lbs/mile)	UnitVolume(cyds/mile)	UnitWeight(lbs/mile)
DOT	Arterial	OC	3.8	12649.55	2.7	8987.84
		C&G	3	9986.48	3.8	12649.55
		Mixed	3.6	11983.78	2.1	6990.54
	Residential	OC	2.3	7656.30	1.4	4660.36
		C&G	3.9	12982.43	3.7	12316.66
		Mixed	3.6	11983.78	1.6	5326.12
ARDSA	Arterial	C&G	6	19972.97	1.9	6324.77
	Residential	C&G	3	9986.48	2.9	9653.60
CBERRRSA	Residential	OC	0.1	332.88	0.3	998.65
		C&G	0.7	2330.18	0.3	998.65
		Mixed	0.2	665.77	0.2	665.77

Year: 2010			Summer 2010	Summer 2010	Fall 2010	Fall 2010
Operator	EPACategory	DrainageType	UnitVolume(cyds/mile)	UnitWeight(lbs/mile)	UnitVolume(cyds/mile)	UnitWeight(lbs/mile)
DOT	Arterial	OC	4.5	14979.73	2.7	8987.84
		C&G	3.6	11983.78	5.6	18641.44
		Mixed	-			
	Residential	OC	1.5	4993.24	1.9	6324.77
		C&G	1.1	3661.71	2.6	8654.95
		Mixed	-			
ARDSA	Arterial	C&G	3.5	11650.90	2.9	9653.60
	Residential	C&G	2.9	9653.60	3.3	10985.13
CBERRRSA	Residential	OC	0.4	1331.53	0.4	1331.53
		C&G	0.4	1331.53	1	3328.83
		Mixed	-			

There is some variability within operator and sweep frequency categories from year to year, but overall, the unit load values suggest a fairly consistent range of dirt loading over the past three years.

4.3. Sweeping Effectiveness Assessment for 2012

Sweeping effectiveness can be related to potential for receiving water impact by a number of relationships illustrated by this data and other data presented in this report. The spatial relationship of street drainage to receiving waters and to the total sediment load present on those streets is an important factor. Performance records summarized in Section 3.1 along with operation maps included in Section 5 provide insight to the potential for street sediment loads to washoff into Anchorage storm drains and receiving waters based on these spatial relationships. Of the three reporting MS4 operators, ARDSA sweeps the most street miles at 618 miles (about 577 miles of residential streets and 41 miles of arterial streets), with CBERRRSA second at 201 street miles (all residential), and DOT third with about 176 street miles (88 arterial and 88 residential). Distribution of these contributing surfaces varies even more significantly between the operators. DOT and CBERRRSA streets are spread across large geographic areas. For DOT jurisdiction, streets extend across the entire Municipality and most of its watersheds. Despite its relatively small streets inventory, CBERRRSA's operational areas also cross a large number of watersheds. However ARDSA's operational area, although including the largest street inventory, is significantly more compact, with the result that ARDSA streets drain across a much smaller number of watersheds than either of the other two primary Anchorage MS4 operators.

Overall, sweeping efficiencies are high for the spring sweep period. These high efficiencies are believed to be due to the high sediment loadings on the street surfaces. This is particularly notable for the spring sweeps when initial loads are the highest, representing traction sanding loads accumulated over the entire winter. As a result spring sweeping efficiencies historically exceed 90 percent.

Sweeping efficiencies for later events are somewhat reduced but include sweeping removal rates that still reflect relatively large sediment loads varying from approximately 9,000 to 22,000 pounds per curb mile for arterial streets and 2,600 to 14,000 pounds per curb mile for residential/collector streets. Differences in swept loads between different operators are evident, but not as pronounced as in past years. CBERRRSA streets tend to have the lightest concentration of sediment on them, producing unit load numbers that are lower than those of ARDSA and DOT for almost all sweep frequency categories and sweep periods. This may be due to differences in the street patterns of the areas maintained by these two street maintenance groups. The primary residential area served by CBERRRSA lies in a relatively flat, newer subdivision area served by lollipop and looped streets linked by a single collector, with adjacent yards having few trees. As a result fewer intersections are present and the need for winter sanding may be significantly reduced. On the other hand, ARDSA and DOT serve much older and highly urbanized Anchorage areas where streets are laid out on a grid block basis, requiring many more collectors and a larger number of controlled intersections where more sanding may be needed to maintain safe winter trafficking. These older neighborhoods are also well-treed, which may lead to the higher fall street particulate load observed.

Finally, past data suggests that some factor during fall sweeps in residential areas is reducing sweeping efficiency. Particulate loads remaining on residential streets after

Anchorage MS4 Street Sweeping Report for 2012

completion of fall sweeping appear to be significantly larger in magnitude than those for the other sweeping events. This may be due to reduced street sweeping coverage because of parked cars, exacerbated by leaf fall. On the other hand, because the post-sweeping samples collected from the gutters of these streets in 2010 and 2011 often contained a significant coarse organic fraction (locally as much as 2/3rds of swept volume), the mass of sediment remaining on the street calculated using the simple algorithm described earlier may have upwardly-biased the volumetrically-based sampling results. Laboratory testing of street dirt also suggests these organics may become highly comminuted and form a significant fraction of the dirt load. Specifically testing of street dirt from 2010 and 2011 revealed an organic content of spring and fall samples on the order of 2 to 3% by weight.

Dirt loads remaining on street surfaces after sweeping are higher than national norms, and potential reasons for this are currently being investigated. These issues will be addressed in upcoming assessments in 2013 and 2014.

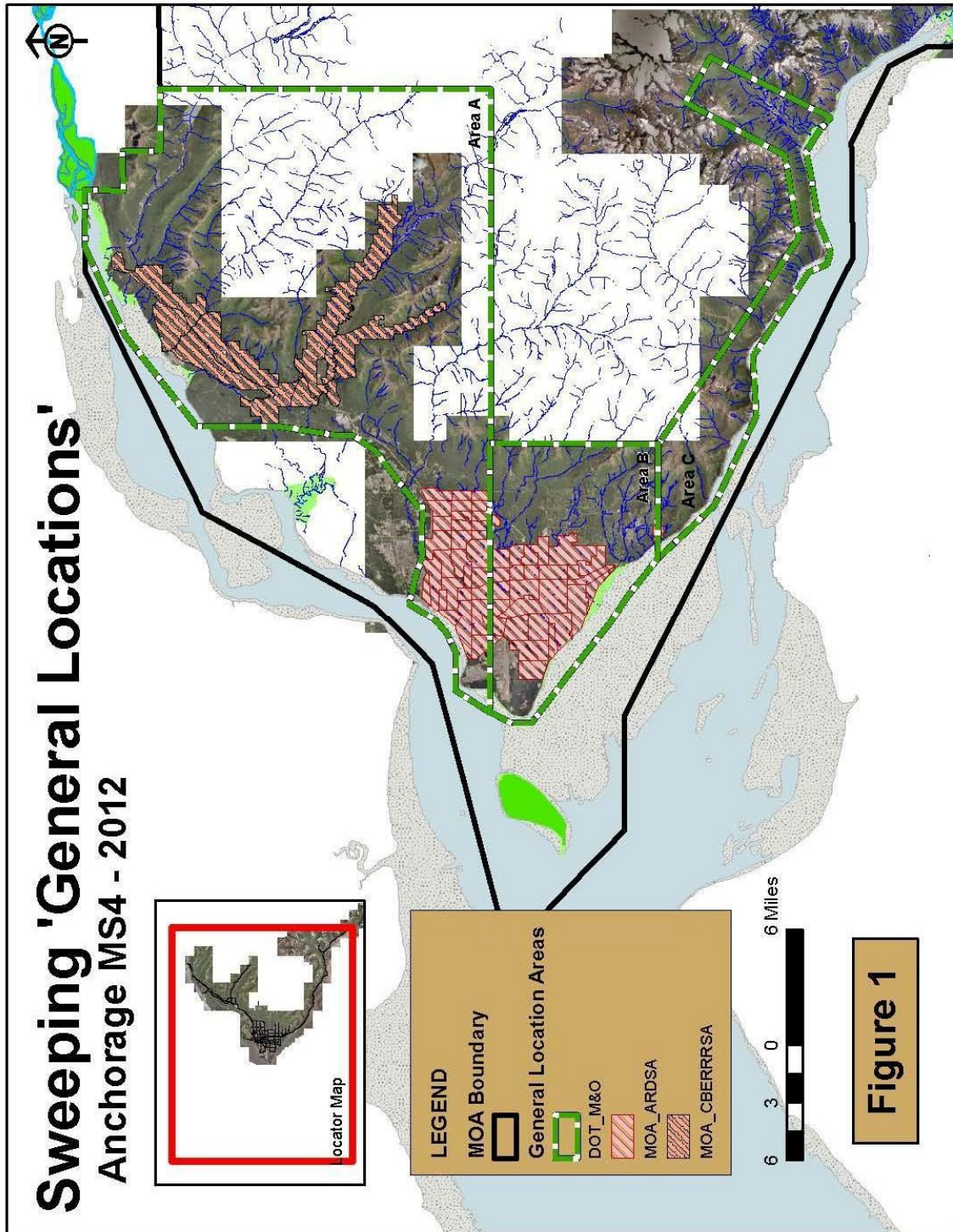
5. 2012 Maps and Data Tables

Section 5 contains maps and detailed data tables supporting summary information and the sweeping assessment presented in Section 2 through 4 above. Section 5.1 contains maps of swept streets and operational areas. Section 5.2 contains detailed sweeping performance records for each of the Anchorage MS4 operators.

5.1. *Designated Streets and General Location Maps*

This section contains maps of Anchorage MS4 streets designated for sweeping by each of the principle street maintenance operators listed in Section 2.0. The maps also locate sweeping operational areas ('general locations') that each operator has used to structure compilation and reporting of 2012 sweeping performance records. The first map in this section, Figure 5-1, provides an overview of all operational areas for all operators. More detailed maps of individual operator's areas and designated streets are presented in the following figures.

Figure 5-1 Anchorage MS4 Sweeping 'General Locations'



Anchorage MS4 Street Sweeping Report for 2012

Figure 5-2 MOA_ARDSA, South—2012 Designated Swept Streets

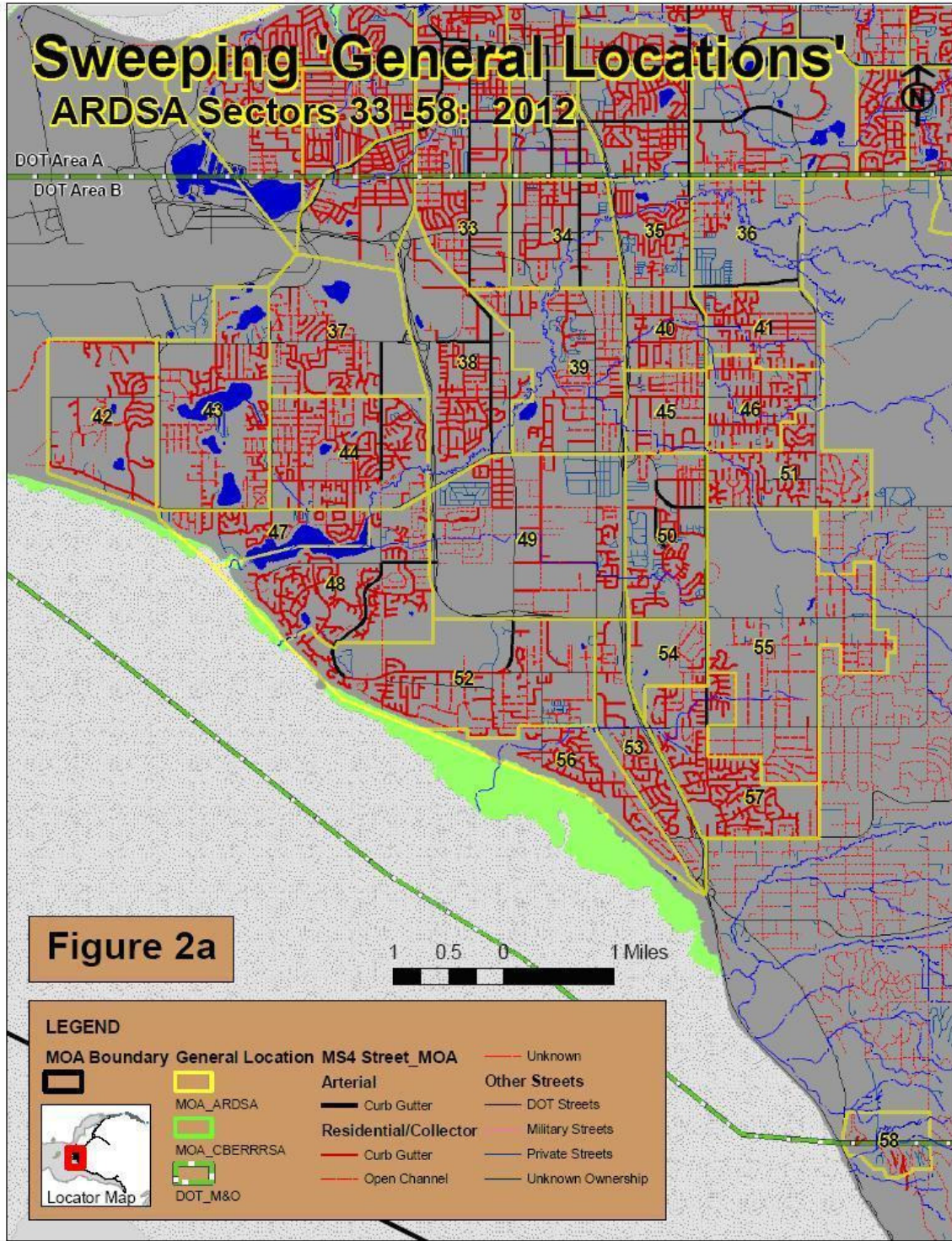
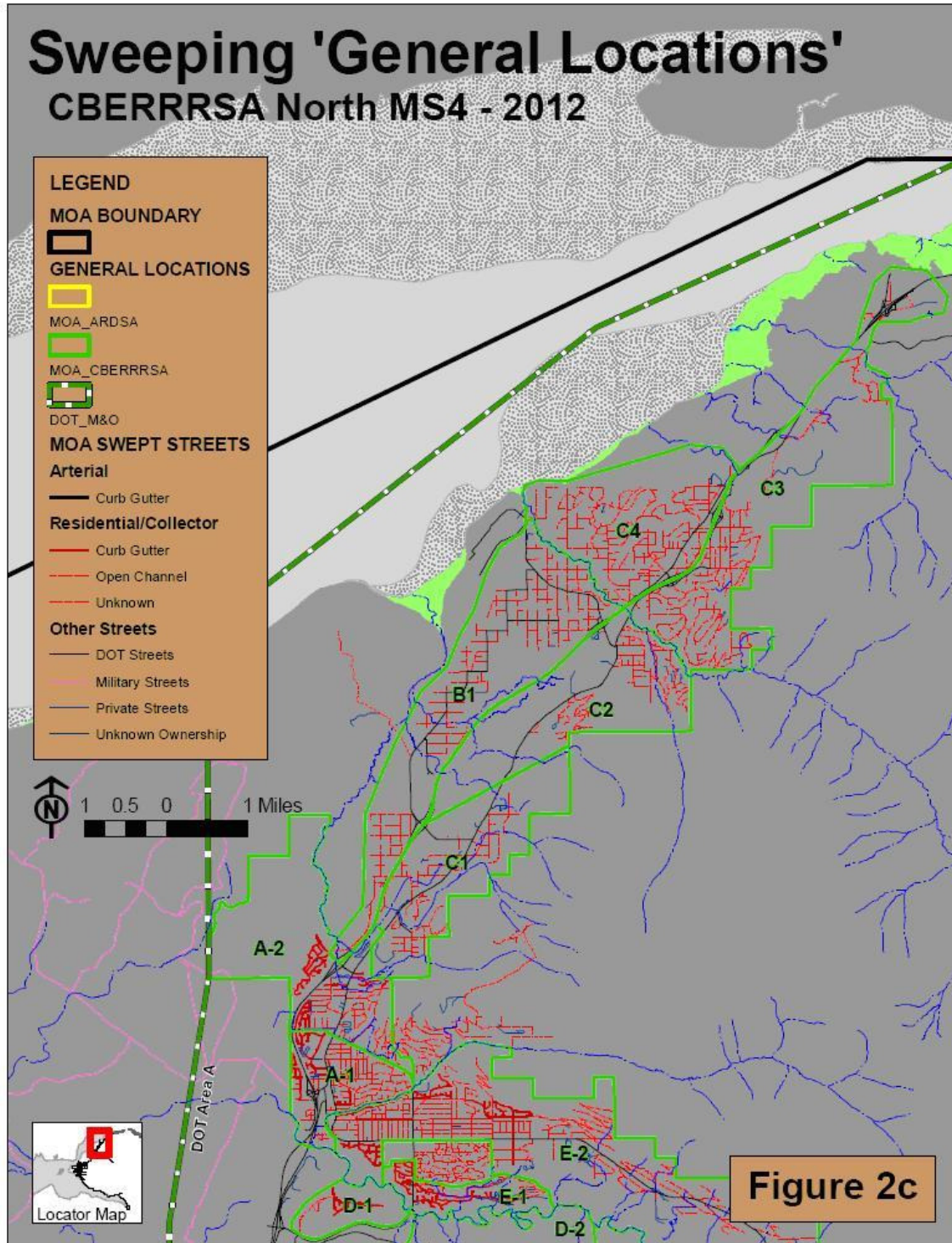


Figure 5-4 CBERRRSA, North—2012 Designated Swept Streets



Anchorage MS4 Street Sweeping Report for 2012

Figure 5-5 CBERRRSA South—2012 Designated Swept Streets

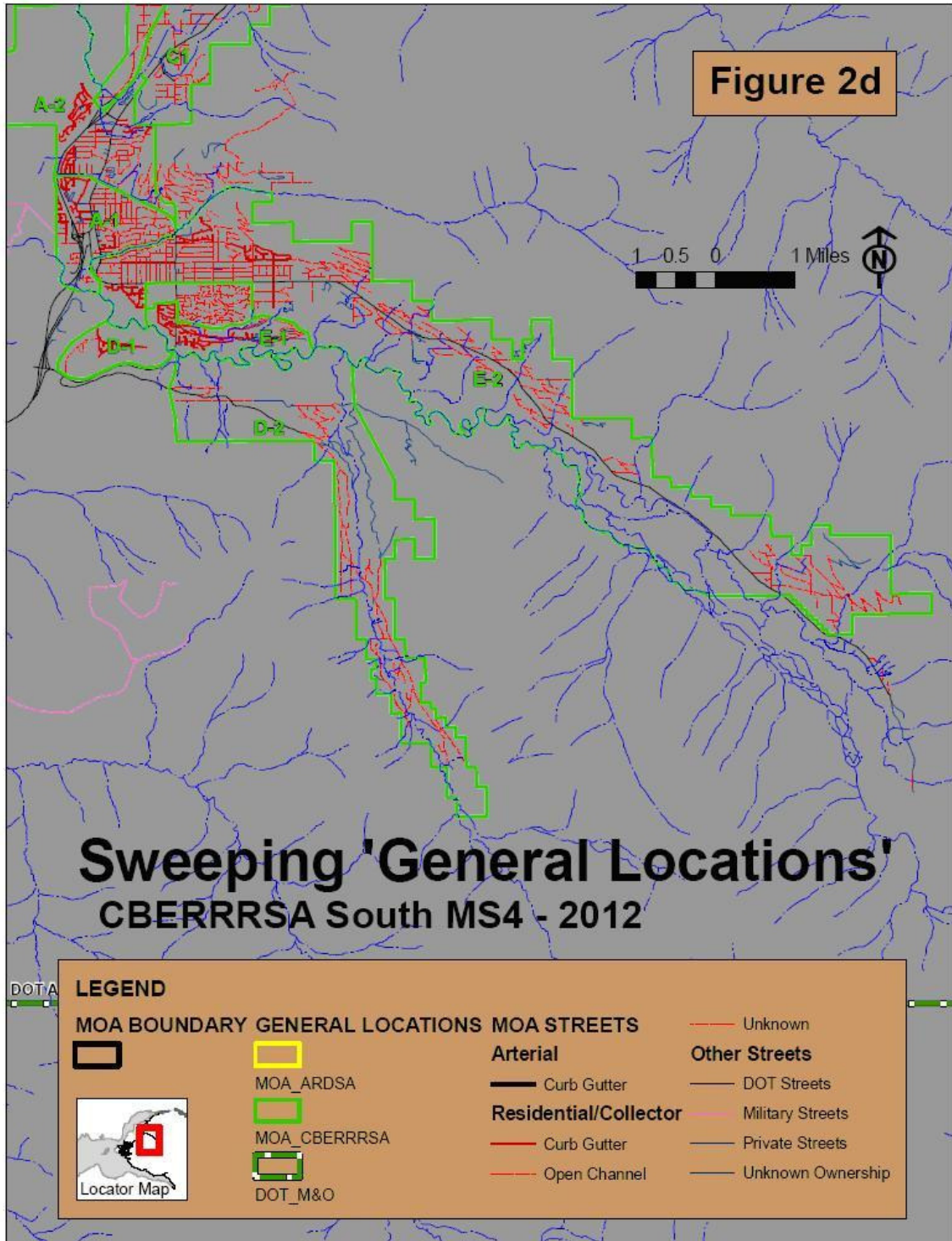


Figure 5-6 AkDOT Area A—2012 Designated Swept Streets

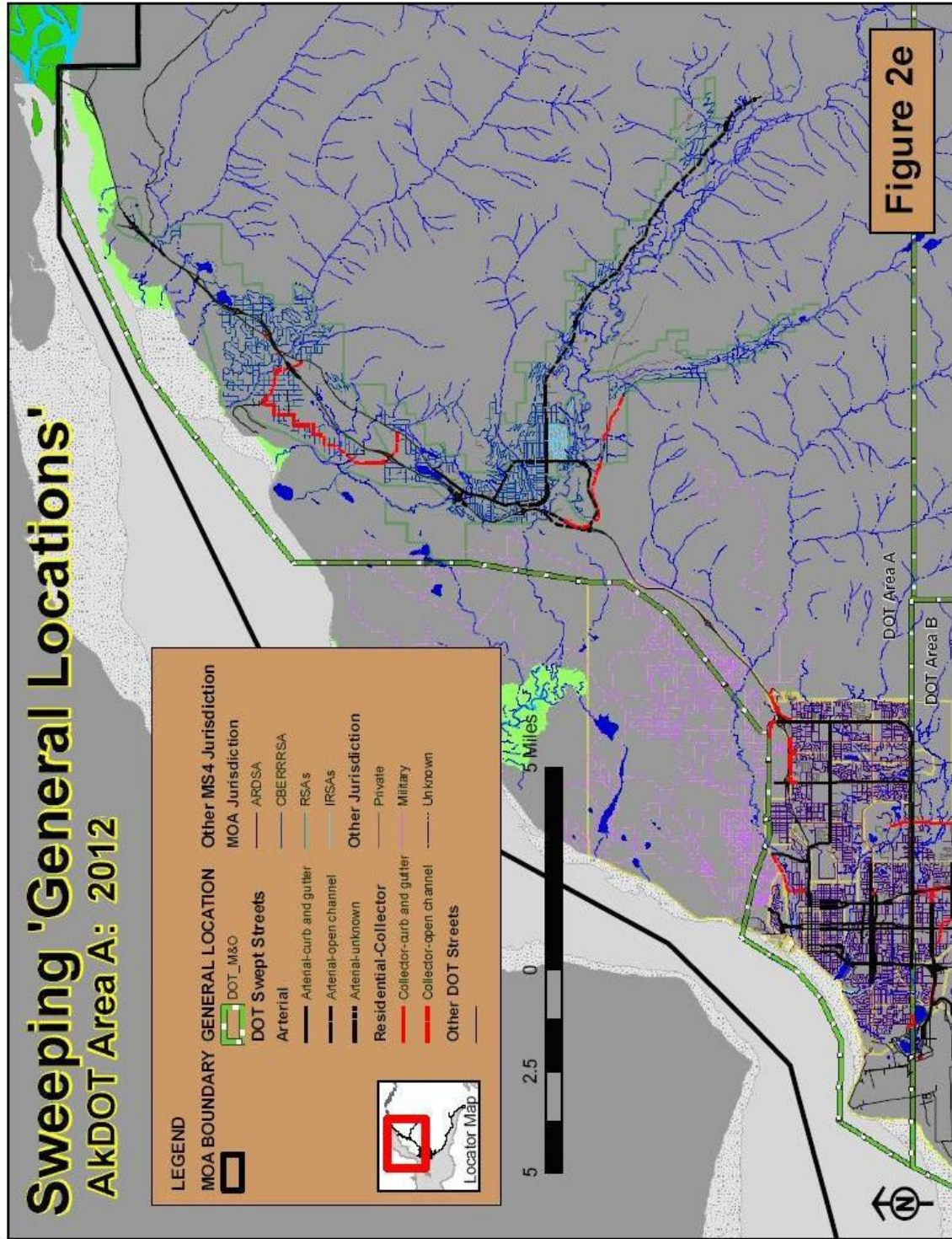


Figure 5-7 AkDOT Area B—2012 Designated Swept Streets

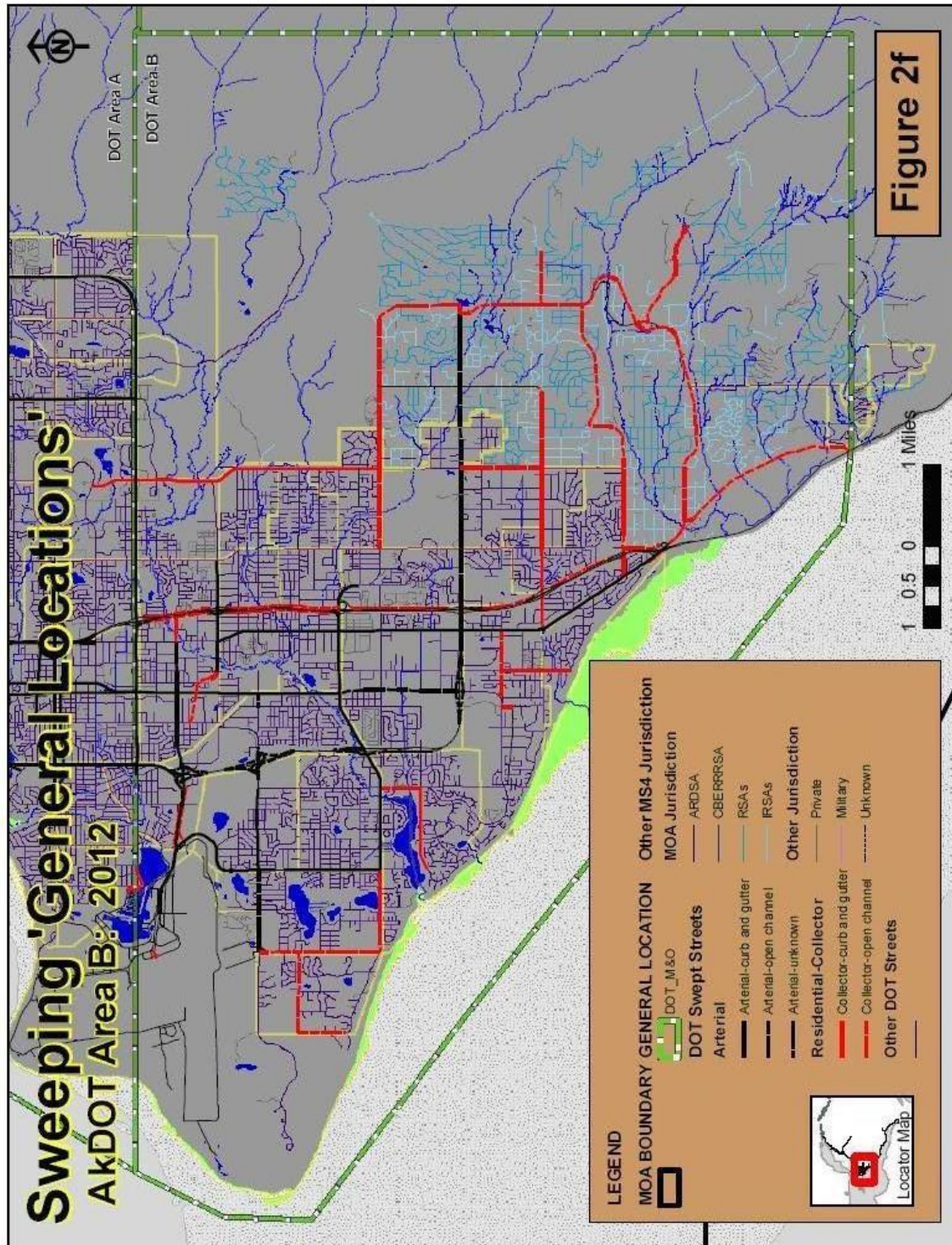
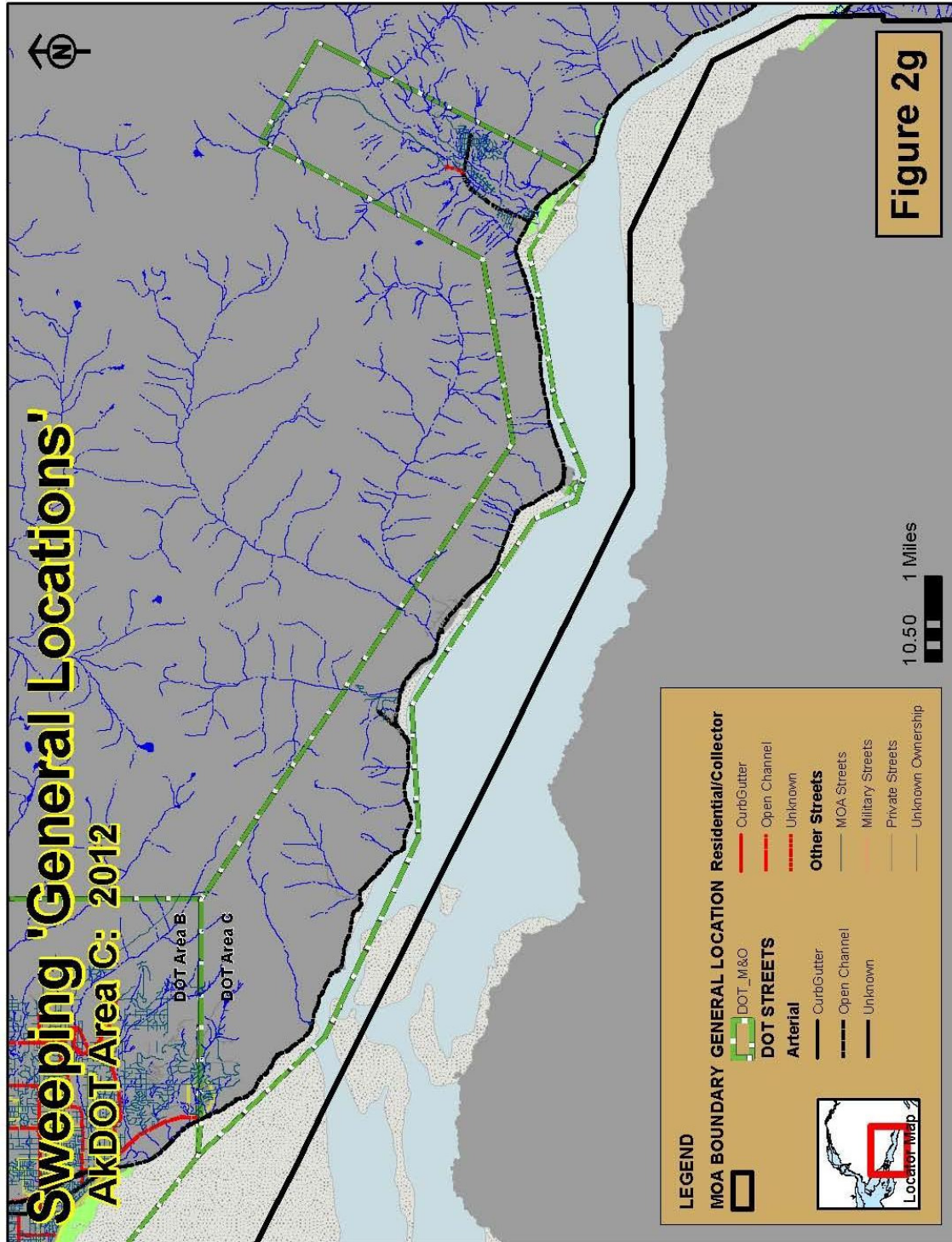


Figure 8 AkDOT Area C—2012 Designated Swept Streets



Anchorage MS4 Street Sweeping Report for 2012

5.2. Anchorage MS4 Detailed Sweeping Records for 2012

Section 5.2 contains detailed sweeping records for 2012 for each of the principle Anchorage MS4 maintenance agencies. Records for each agency are summarized in a separate subsection, with records organized first by sweeping event and then by the operational areas ('general locations') of that operator.

Anchorage MS4 Street Sweeping Report for 2012

5.2.1. DOT 2012 Detailed Sweeping Reports

Table 5-1 DOT Spring 2012 Sweeping Report

2012 Spring DOT							
Completion Range: 4/15/2012 - 5/30/2012							
Area A	EPA Category	Drainage	Street_Miles	Curb/Pickup Miles	Total Pick up (Cubic Yards)	Unit Pick up (cyds/PU Mile)	Completeness (%)
	Arterial	OC	2.7	5.4	100	18.4	100
		CG	27.4	64.7	2466	38.1	100
		Mixed	14.2	43.2	1188	27.5	100
	Residential	OC	22.0	43.9	524	11.9	100
		CG	1.1	3.4	124	36.9	100
		Mixed	11.2	23.0	482	21.0	100
Totals			78.7	183.6	4884.0		100
Area B	EPA Category	Drainage	Street_Miles	Curb/Pickup Miles	Total Pick up (Cubic Yards)	Unit Pick up (cyds/PU Mile)	Completeness (%)
	Arterial	OC	2.6	5.3	30	5.7	100
		CG	9.4	33.4	1010	30.2	100
		Mixed	29.0	74.9	1776	23.7	100
	Residential	OC	31.3	62.7	212	3.4	100
		CG	3.0	8.6	158	18.4	100
		Mixed	19.0	39.9	284	7.1	100
Totals			94.3	224.8	2405		100
Area C*	EPA Category	Drainage	Street_Miles	Curb/Pickup Miles	Total Pick up (Cubic Yards)	Unit Pick up (cyds/PU Mile)	Completeness (%)
	Arterial	OC	2.9	0.0	0	0.0	50
Totals			2.9	0.0	0		50
*Due to miscommunication, 1st Area C Spring sweep was completed on 5/16/2012 and 2nd Area C Spring sweep was completed on 6/12/2012.							

Anchorage MS4 Street Sweeping Report for 2012

Table 5-2 DOT Summer 2012 Sweeping Report

2012 Summer DOT							
Completion Range: 6/15/2012 - 7/20/2012							
Area A	EPA Category	Drainage	Street_Miles	Curb/Pickup Miles	Total Pick up (Cubic Yards)	Unit Pick up (cyds/PU Mile)	Completeness (%)
	Arterial	OC	2.7	5.4	32	5.9	100
		CG	27.4	64.7	302	4.7	100
		Mixed	14.2	43.2	180	4.2	100
	Residential	OC	22.0	43.9	232	5.3	100
		CG	1.1	3.4	18	5.4	100
		Mixed	11.2	23.0	142	6.2	100
Totals			78.7	183.6	906.0		100
Area B	EPA Category	Drainage	Street_Miles	Curb/Pickup Miles	Total Pick up (Cubic Yards)	Unit Pick up (cyds/PU Mile)	Completeness (%)
	Arterial	OC	2.6	5.3	5	0.9	100
		CG	9.4	33.4	160	4.8	100
		Mixed	29.0	74.9	178	2.4	100
	Residential	OC	31.3	62.7	30	0.5	100
		CG	3.0	8.6	34	4.0	100
		Mixed	19.0	39.9	54	1.4	100
Totals			94.3	224.8	461.0		100
Area C	EPA Category	Drainage	Street_Miles	Curb/Pickup Miles	Total Pick up (Cubic Yards)	Unit Pick up (cyds/PU Mile)	Completeness (%)
	Arterial	OC	2.9	0.0	0	0.0	100
Totals			2.9	0.0	0		100

Anchorage MS4 Street Sweeping Report for 2012

Table 5-3 DOT Fall 2012 Sweeping Report

2012 Fall DOT							
Completion Range: 9/1/2012 - 10/2/2012							
Area A	EPA Category	Drainage	Street_Miles	Curb/Pickup Miles	Total Pick up (Cubic Yards)	Unit Pick up (cyds/PU Mile)	Completeness (%)
	Arterial	OC	2.7	5.4	22	4.0	100
		CG	27.4	64.7	424	6.5	100
		Mixed	14.2	43.2	208	4.8	100
	Residential	OC	22.0	43.9	298	6.8	100
		CG	1.1	3.4	26	7.7	100
		Mixed	11.2	23.0	186	8.1	100
Totals			78.7	183.6	1164.0		100
Area B	EPA Category	Drainage	Street_Miles	Curb/Pickup Miles	Total Pick up (Cubic Yards)	Unit Pick up (cyds/PU Mile)	Completeness (%)
	Arterial	OC	2.6	5.3	15	2.8	100
		CG	9.4	33.4	244	7.3	100
		Mixed	29.0	74.9	410	5.5	100
	Residential	OC	31.3	62.7	69	1.1	100
		CG	3.0	8.6	25	2.9	100
		Mixed	19.0	39.9	60	1.5	100
Totals			94.3	224.8	823.0		100
Area C	EPA Category	Drainage	Street_Miles	Curb/Pickup Miles	Total Pick up (Cubic Yards)	Unit Pick up (cyds/PU Mile)	Completeness (%)
	Arterial	OC	2.9	0.0	0	0.0	100
Totals			2.9	0.0	0		100

Anchorage MS4 Street Sweeping Report for 2012

5.2.2. CBERRRSA 2012 Detailed Sweeping Reports

Table 5-4 CBERRRSA Spring 2012 Sweeping Report

2012 Spring CBERRRSA							
Completion Range 5/4/2012 - 5/26/2012							
Area A	EPA Category*	Drainage	Street Miles	Curb/Pickup Miles	Total Pick up (Cubic Yards)	Unit Pick up (Cubic Yds /Mile)	Completeness (%)
	Residential	OC	21.2	37.9	252.0	6.6	100.0
		CG	12.8	25.6	237.0	9.2	100.0
		Mixed	3.3	6.5	18.0	2.8	100.0
Totals			37.3	70.1	507.0		100.0
Area B	EPA Category	Drainage	Street Miles	Curb/Pickup Miles	Total Pick up (Cubic Yards)	Unit Pick up (Cubic Yds /Mile)	Completeness (%)
	Residential	OC	18.7	0.0			100.0
		CG	0.0	0.0			
Totals			18.7	0.0	0.0		100.0
Area C	EPA Category	Drainage	Street Miles	Curb/Pickup Miles	Total Pick up (Cubic Yards)	Unit Pick up (Cubic Yds /Mile)	Completeness (%)
	Residential	OC	66.4	38.4	228.0	5.9	100.0
		CG	0.4	0.7	3.0	4.1	100.0
		Mixed	0.5	0.9	3.0	3.3	100.0
Totals			67.2	40.0	234.0		100.0
Area D	EPA Category	Drainage	Street Miles	Curb/Pickup Miles	Total Pick up (Cubic Yards)	Unit Pick up (Cubic Yds /Mile)	Completeness (%)
	Residential	OC	18.4	0.0			100.0
		CG	1.7	3.4	27.0	7.9	100.0
Totals			20.1	3.4	27.0		100.0
Area E	EPA Category	Drainage	Street Miles	Curb/Pickup Miles	Total Pick up (Cubic Yards)	Unit Pick up (Cubic Yds /Mile)	Completeness (%)
	Residential	OC	41.4	22.7	96.0	4.2	100.0
		CG	11.8	23.6	300.0	12.7	100.0
		Mixed	4.6	9.2	21.0	2.3	100.0
Totals			57.8	55.4	417.0		100.0

*Note: CBERRRSA Operational area Contains no Arterial Street Segments

Anchorage MS4 Street Sweeping Report for 2012

Table 5-5 CBERRRSA Summer 2012 Sweeping Report

2012 Summer CBERRRSA							
Completion Range 6/18/2012 - 6/29/2012							
Area A	EPA Category*	Drainage	Street Miles	Curb/Pickup Miles	Total Pick up (Cubic Yards)	Unit Pick up (Cubic Yds /Mile)	Completeness (%)
	Residential	OC	18.1	31.8	60.0	1.9	100.0
		CG	12.0	24.0	99.0	4.1	100.0
		Mixed	7.2	14.3	21.0	1.5	100.0
Totals			37.3	70.0	180.0		100.0
Area B	EPA Category	Drainage	Street Miles	Curb/Pickup Miles	Total Pick up (Cubic Yards)	Unit Pick up (Cubic Yds /Mile)	Completeness (%)
	Residential	OC	18.4	0.0			100.0
		CG	0.0	0.0			
Totals			18.4	0.0	0.0		100.0
Area C	EPA Category	Drainage	Street Miles	Curb/Pickup Miles	Total Pick up (Cubic Yards)	Unit Pick up (Cubic Yds /Mile)	Completeness (%)
	Residential	OC	66.0	36.5	45.0	1.2	100.0
		CG	0.4	0.7	0.0	0.0	100.0
		Mixed	0.5	0.9	0.0	0.0	100.0
Totals			66.8	38.2	45.0		100.0
Area D	EPA Category	Drainage	Street Miles	Curb/Pickup Miles	Total Pick up (Cubic Yards)	Unit Pick up (Cubic Yds /Mile)	Completeness (%)
	Residential	OC	18.8	0.0			100.0
		CG	1.7	3.4	3.0	0.9	100.0
Totals			20.5	3.4	3.0		100.0
Area E	EPA Category	Drainage	Street Miles	Curb/Pickup Miles	Total Pick up (Cubic Yards)	Unit Pick up (Cubic Yds /Mile)	Completeness (%)
	Residential	OC	34.9	9.6	12.0	1.3	100.0
		CG	8.1	16.2	42.0	2.6	100.0
		Mixed	15.0	30.0	15.0	0.5	100.0
Totals			57.9	55.7	69.0		100.0

*Note: CBERRRSA Operational area Contains no Arterial Street Segments

Anchorage MS4 Street Sweeping Report for 2012

Table 5-6 CBERRRSA Fall 2012 Sweeping Report

2012 Fall CBERRRSA							
Completion Range 9/4/2012 - 9/19/2012							
Area A	EPA Category*	Drainage	Street Miles	Curb/Pickup Miles	Total Pick up (Cubic Yards)	Unit Pick up (Cubic Yds /Mile)	Completeness (%)
	Residential	OC	14.0	23.6	24.0	1.0	100.0
		CG	8.8	17.6	36.0	2.1	100.0
		Mixed	13.0	25.9	21.0	0.8	100.0
Totals			35.8	67.0	81.0		100.0
Area B	EPA Category	Drainage	Street Miles	Curb/Pickup Miles	Total Pick up (Cubic Yards)	Unit Pick up (Cubic Yds /Mile)	Completeness (%)
	Residential	OC	18.4	0.0			100.0
		CG	0.0	0.0			
Totals			18.4	0.0	0.0		100.0
Area C	EPA Category	Drainage	Street Miles	Curb/Pickup Miles	Total Pick up (Cubic Yards)	Unit Pick up (Cubic Yds /Mile)	Completeness (%)
	Residential	OC	65.5	35.6	27.0	0.8	100.0
		CG	0.4	0.7	0.0	0.0	100.0
		Mixed	0.5	0.9	3.0	3.3	100.0
Totals			66.3	37.2	30.0		100.0
Area D	EPA Category	Drainage	Street Miles	Curb/Pickup Miles	Total Pick up (Cubic Yards)	Unit Pick up (Cubic Yds /Mile)	Completeness (%)
	Residential	OC	17.8	0.0			100.0
		CG	1.7	3.4	9.0	2.6	100.0
Totals			19.5	3.4	9.0		100.0
Area E	EPA Category	Drainage	Street Miles	Curb/Pickup Miles	Total Pick up (Cubic Yards)	Unit Pick up (Cubic Yds /Mile)	Completeness (%)
	Residential	OC	37.6	15.1	9.0	0.6	100.0
		CG	5.3	10.6	18.0	1.7	100.0
		Mixed	10.4	20.8	12.0	0.6	100.0
Totals			53.3	46.5	39.0		100.0
Area A&E Mixed	EPA Category	Drainage	Street Miles	Curb/Pickup Miles	Total Pick up (Cubic Yards)	Unit Pick up (Cubic Yds /Mile)	Completeness (%)
	Residential	CG	3.4	6.8	15.0	2.2	100.0
		Mixed	2.7	5.4	6.0	1.1	100.0
Totals			6.1	12.2	21.0		100.0

*Note: CBERRRSA Operational area Contains no Arterial Street Segments

Anchorage MS4 Street Sweeping Report for 2012

5.2.3. ARDSA 2012 Detailed Sweeping Reports

Table 5-7 ARDSA Spring 2012 Sweeping Report

2012 Spring ARDSA

Completion Range 4/12/2012 - 6/1/2012

Sector 1	EPA Category	Drainage	Street Miles	Curb/Pickup Miles	Total Pick up (Cubic Yards)	Unit Pick up (Cubic Yds/Mile)	Completeness (%)
	Residential	OC					
		CG		10.68			
		Mixed			No data reported		0
Totals					0		0

Sector 2	EPA Category	Drainage	Street Miles	Curb/Pickup Miles	Total Pick up (Cubic Yards)	Unit Pick up (Cubic Yds/Mile)	Completeness (%)
	Arterial	OC		0.00			
		CG		7.01	166.13	23.7	100
	Residential	OC					
		CG		10.49			
		Mixed			326.4		100
Totals					492.53		100

Sector 3	EPA Category	Drainage	Street Miles	Curb/Pickup Miles	Total Pick up (Cubic Yards)	Unit Pick up (Cubic Yds/Mile)	Completeness (%)
	Arterial	OC		0.00			
		CG		0.56	5.25	9.38	100
	Residential	OC					
		CG		13.44			
		Mixed			154		100
Totals					159.25		100

Sector 4	EPA Category	Drainage	Street Miles	Curb/Pickup Miles	Total Pick up (Cubic Yards)	Unit Pick up (Cubic Yds/Mile)	Completeness (%)
	Arterial	OC		0.00			
		CG		8.57	260.38	30.38	100
	Residential	OC					
		CG		12.89			
		Mixed			51.5		100
Totals					311.88		100

Sector 5	EPA Category	Drainage	Street Miles	Curb/Pickup Miles	Total Pick up (Cubic Yards)	Unit Pick up (Cubic Yds/Mile)	Completeness (%)
	Arterial	OC		0.00			
		CG		6.59	192.78	29.24	100
	Residential	OC					
		CG		34.24			
		Mixed			559		100
Totals					751.78		100

Sector 6	EPA Category	Drainage	Street Miles	Curb/Pickup Miles	Total Pick up (Cubic Yards)	Unit Pick up (Cubic Yds/Mile)	Completeness (%)
	Arterial	OC		0.00			
		CG		0.00			
	Residential	OC					
		CG		3.03			
		Mixed			49.89		100
Totals					49.89		100

Sector 7	EPA Category	Drainage	Street Miles	Curb/Pickup Miles	Total Pick up (Cubic Yards)	Unit Pick up (Cubic Yds/Mile)	Completeness (%)
	Arterial	OC		0.00			
		CG		1.95	51.73	26.47	100
	Residential	OC					
		CG		46.35			
		Mixed			349.73		100
Totals					401.46		100

Anchorage MS4 Street Sweeping Report for 2012

Sector 8	EPA Category	Drainage	Street Miles	Curb/Pickup Miles	Total Pick up (Cubic Yards)	Unit Pick up (Cubic Yds/Mile)	Completeness (%)
	Arterial	OC		0.00			
		CG		0.00			
	Residential	OC					
		CG		12.13			
		Mixed			170.86		100
Totals					170.86		100

Sector 9	EPA Category	Drainage	Street Miles	Curb/Pickup Miles	Total Pick up (Cubic Yards)	Unit Pick up (Cubic Yds/Mile)	Completeness (%)
	Arterial	OC		0.00			
		CG		0.00			
	Residential	OC					
		CG		12.04			
		Mixed			354.2		100
Totals					354.2		100

Sector 10	EPA Category	Drainage	Street Miles	Curb/Pickup Miles	Total Pick up (Cubic Yards)	Unit Pick up (Cubic Yds/Mile)	Completeness (%)
	Arterial	OC		0.00			
		CG		0.00			
	Residential	OC					
		CG		11.19			
		Mixed			125.91		100
Totals					125.91		100

Sector 11	EPA Category	Drainage	Street Miles	Curb/Pickup Miles	Total Pick up (Cubic Yards)	Unit Pick up (Cubic Yds/Mile)	Completeness (%)
	Arterial	OC					
		CG		1.16			
		Mixed				71.63	100
	Residential	OC					
		CG		20.57			
		Mixed				203.25	100
Totals					274.88		100

Sector 12	EPA Category	Drainage	Street Miles	Curb/Pickup Miles	Total Pick up (Cubic Yards)	Unit Pick up (Cubic Yds/Mile)	Completeness (%)
	Arterial	OC		0.00			
		CG		2.38	73.47	30.90	100
	Residential	OC					
		CG		14.06			
		Mixed			167.44		100
Totals					240.91		100

Sector 13	EPA Category	Drainage	Street Miles	Curb/Pickup Miles	Total Pick up (Cubic Yards)	Unit Pick up (Cubic Yds/Mile)	Completeness (%)
	Arterial	OC		0.00			
		CG		0.36	26.65	74.03	100
	Residential	OC					
		CG		5.84			
		Mixed			78.5		100
Totals					105.15		100

Sector 14	EPA Category	Drainage	Street Miles	Curb/Pickup Miles	Total Pick up (Cubic Yards)	Unit Pick up (Cubic Yds/Mile)	Completeness (%)
	Arterial	OC		0.00			
		CG		3.53	93.38	26.45	100
	Residential	OC		0.00			
		CG		11.91	193.64	16.26	100
Totals				15.44	287.02	18.59	100

Sector 15	EPA Category	Drainage	Street Miles	Curb/Pickup Miles	Total Pick up (Cubic Yards)	Unit Pick up (Cubic Yds/Mile)	Completeness (%)
	Arterial	OC		0.00			
		CG		6.22	205.15	32.99	100
	Residential	OC		0.00			
		CG		23.57	282.05	11.97	100
Totals				29.79	487.2	16.35	100

Anchorage MS4 Street Sweeping Report for 2012

Sector 16	EPA Category	Drainage	Street Miles	Curb/Pickup Miles	Total Pick up (Cubic Yards)	Unit Pick up (Cubic Yds/Mile)	Completeness (%)
	Arterial	OC		0.00			
		CG		7.08	101.13	14.29	100
	Residential	OC					
		CG		8.23			
		Mixed			99.23		100
Totals					200.36		100

Sector 17	EPA Category	Drainage	Street Miles	Curb/Pickup Miles	Total Pick up (Cubic Yards)	Unit Pick up (Cubic Yds/Mile)	Completeness (%)
	Arterial	OC		0.00			
		CG		1.53	49	32.03	100
	Residential	OC					
		CG		15.49			
		Mixed			84.5		100
Totals					133.5		100

Sector 18	EPA Category	Drainage	Street Miles	Curb/Pickup Miles	Total Pick up (Cubic Yards)	Unit Pick up (Cubic Yds/Mile)	Completeness (%)
	Arterial	OC		0.00			
		CG		2.00	43.63	21.82	100
	Residential	OC		0.00			
		CG		12.33	92.97	7.54	100
Totals				14.33	136.6	9.53	100

Sector 19	EPA Category	Drainage	Street Miles	Curb/Pickup Miles	Total Pick up (Cubic Yards)	Unit Pick up (Cubic Yds/Mile)	Completeness (%)
	Arterial	OC		0.00			
		CG		2.00	40.25	20.13	100
	Residential	OC		0.00			
		CG		12.09	178.81	14.79	100
Totals				14.09	219.06	15.55	100

Sector 20	EPA Category	Drainage	Street Miles	Curb/Pickup Miles	Total Pick up (Cubic Yards)	Unit Pick up (Cubic Yds/Mile)	Completeness (%)
	Arterial	OC		0.00			
		CG		0.00			
	Residential	OC					
		CG		7.41			
		Mixed			53.5		100
Totals					53.5		100

Sector 21	EPA Category	Drainage	Street Miles	Curb/Pickup Miles	Total Pick up (Cubic Yards)	Unit Pick up (Cubic Yds/Mile)	Completeness (%)
	Arterial	OC		0.00			
		CG		0.00			
	Residential	OC					
		CG		18.57			
		Mixed			207.21		100
Totals					207.21		100

Sector 22	EPA Category	Drainage	Street Miles	Curb/Pickup Miles	Total Pick up (Cubic Yards)	Unit Pick up (Cubic Yds/Mile)	Completeness (%)
	Arterial	OC		0.00			
		CG		0.00			
	Residential	OC					
		CG		24.77			
		Mixed			239.93		100
Totals					239.93		100

Sector 23	EPA Category	Drainage	Street Miles	Curb/Pickup Miles	Total Pick up (Cubic Yards)	Unit Pick up (Cubic Yds/Mile)	Completeness (%)
	Arterial	OC		0.00			
		CG		3.91	99.75	25.49	100
	Residential	OC					
		CG		17.67			
		Mixed			116.78		100
Totals					216.53		100

Anchorage MS4 Street Sweeping Report for 2012

Sector 24	EPA Category	Drainage	Street Miles	Curb/Pickup Miles	Total Pick up (Cubic Yards)	Unit Pick up (Cubic Yds/Mile)	Completeness (%)
	Arterial	OC		0.00			
		CG		7.53	93.53	12.43	100
	Residential	OC					
		CG		16.95			
		Mixed			234.68		100
Totals					328.21		100

Sector 25	EPA Category	Drainage	Street Miles	Curb/Pickup Miles	Total Pick up (Cubic Yards)	Unit Pick up (Cubic Yds/Mile)	Completeness (%)
	Arterial	OC		0.00			
		CG		5.37	138.22	25.73	100
	Residential	OC		0.00			
		CG		5.23	118.28	22.62	100
Totals				10.60	256.5	24.20	100

Sector 26	EPA Category	Drainage	Street Miles	Curb/Pickup Miles	Total Pick up (Cubic Yards)	Unit Pick up (Cubic Yds/Mile)	Completeness (%)
	Arterial	OC		0.00			
		CG		8.01	123.65	15.44	100
	Residential	OC					
		CG		24.29			
		Mixed			207.18		100
Totals					330.83		100

Sector 27	EPA Category	Drainage	Street Miles	Curb/Pickup Miles	Total Pick up (Cubic Yards)	Unit Pick up (Cubic Yds/Mile)	Completeness (%)
	Arterial	OC		0.00			
		CG		4.10	62.53	15.25	100
	Residential	OC					
		CG		4.83			
		Mixed			221.28		100
Totals					283.81		100

Sector 28	EPA Category	Drainage	Street Miles	Curb/Pickup Miles	Total Pick up (Cubic Yards)	Unit Pick up (Cubic Yds/Mile)	Completeness (%)
	Arterial	OC		0.00			
		CG		0.00			
	Residential	OC					
		CG		16.26			
		Mixed			124.1		100
Totals					124.1		100

Sector 29	EPA Category	Drainage	Street Miles	Curb/Pickup Miles	Total Pick up (Cubic Yards)	Unit Pick up (Cubic Yds/Mile)	Completeness (%)
	Arterial	OC		0.00			
		CG		0.00			
	Residential	OC					
		CG		10.25			
		Mixed			73.8		100
Totals					73.8		100

Sector 30	EPA Category	Drainage	Street Miles	Curb/Pickup Miles	Total Pick up (Cubic Yards)	Unit Pick up (Cubic Yds/Mile)	Completeness (%)
	Arterial	OC		0.00			
		CG		0.00			
	Residential	OC		0.00			
		CG		12.89	251.32	19.50	100
Totals				12.89	251.32	19.50	100

Sector 31	EPA Category	Drainage	Street Miles	Curb/Pickup Miles	Total Pick up (Cubic Yards)	Unit Pick up (Cubic Yds/Mile)	Completeness (%)
	Arterial	OC		0.00			
		CG		0.00			
	Residential	OC					
		CG		9.92			
		Mixed			101.42		100
Totals					101.42		100

Anchorage MS4 Street Sweeping Report for 2012

Sector 32	EPA Category	Drainage	Street Miles	Curb/Pickup Miles	Total Pick up (Cubic Yards)	Unit Pick up (Cubic Yds/Mile)	Completeness (%)
	Arterial	OC		0.00			
		CG		0.00			
	Residential	OC					
		CG			13.78		
		Mixed			136.07		100
Totals					136.07		100

Sector 33	EPA Category	Drainage	Street Miles	Curb/Pickup Miles	Total Pick up (Cubic Yards)	Unit Pick up (Cubic Yds/Mile)	Completeness (%)
	Arterial	OC		0.00			
		CG		3.44	53.5	15.55	100
	Residential	OC					
		CG			10.79		
		Mixed			163.63		100
Totals					217.13		100

Sector 34	EPA Category	Drainage	Street Miles	Curb/Pickup Miles	Total Pick up (Cubic Yards)	Unit Pick up (Cubic Yds/Mile)	Completeness (%)
	Arterial	OC		0.00			
		CG		4.98	120.92	24.27	100
	Residential	OC					
		CG			13.09		
		Mixed			318.5		100
Totals					439.42		100

Sector 35	EPA Category	Drainage	Street Miles	Curb/Pickup Miles	Total Pick up (Cubic Yards)	Unit Pick up (Cubic Yds/Mile)	Completeness (%)
	Arterial	OC		0.00			
		CG		4.00	56.5	14.13	100
	Residential	OC					
		CG			12.82		
		Mixed			139.7		100
Totals					196.2		100

Sector 36	EPA Category	Drainage	Street Miles	Curb/Pickup Miles	Total Pick up (Cubic Yards)	Unit Pick up (Cubic Yds/Mile)	Completeness (%)
	Arterial	OC		0.00			
		CG		3.90	74.25	19.04	100
	Residential	OC					
		CG			3.30		
		Mixed			28.7		100
Totals					102.95		100

Sector 37	EPA Category	Drainage	Street Miles	Curb/Pickup Miles	Total Pick up (Cubic Yards)	Unit Pick up (Cubic Yds/Mile)	Completeness (%)
	Arterial	OC		0.00			
		CG		0.99	36.75	37.12	100
	Residential	OC					
		CG			16.07		
		Mixed			183.75		100
Totals					220.5		100

Sector 38	EPA Category	Drainage	Street Miles	Curb/Pickup Miles	Total Pick up (Cubic Yards)	Unit Pick up (Cubic Yds/Mile)	Completeness (%)
	Arterial	OC		0.00			
		CG		3.79	90.18	23.79	100
	Residential	OC					
		CG			21.37		
		Mixed			295.8		100
Totals					385.98		100

Sector 39	EPA Category	Drainage	Street Miles	Curb/Pickup Miles	Total Pick up (Cubic Yards)	Unit Pick up (Cubic Yds/Mile)	Completeness (%)
	Arterial	OC		0.00			
		CG			0.00		
	Residential	OC					
		CG			12.82		
		Mixed			487.93		100
Totals					487.93		100

Anchorage MS4 Street Sweeping Report for 2012

Sector 40	EPA Category	Drainage	Street Miles	Curb/Pickup Miles	Total Pick up (Cubic Yards)	Unit Pick up (Cubic Yds/Mile)	Completeness (%)
	Arterial	OC		0.00			
		CG		3.00	10.25	3.42	100
	Residential	OC					
		CG			10.06		
		Mixed			200.02		100
Totals					210.27		100

Sector 41	EPA Category	Drainage	Street Miles	Curb/Pickup Miles	Total Pick up (Cubic Yards)	Unit Pick up (Cubic Yds/Mile)	Completeness (%)
	Arterial	OC		0.00			
		CG			0.00		
	Residential	OC					
		CG			15.38		
		Mixed			164.57		100
Totals					164.57		100

Sector 42	EPA Category	Drainage	Street Miles	Curb/Pickup Miles	Total Pick up (Cubic Yards)	Unit Pick up (Cubic Yds/Mile)	Completeness (%)
	Arterial	OC		0.00			
		CG			0.00		
	Residential	OC					
		CG			13.15		
		Mixed			74.5		100
Totals					74.5		100

Sector 43	EPA Category	Drainage	Street Miles	Curb/Pickup Miles	Total Pick up (Cubic Yards)	Unit Pick up (Cubic Yds/Mile)	Completeness (%)
	Arterial	OC		0.00			
		CG			0.00		
	Residential	OC					
		CG			12.82		
		Mixed			205.25		100
Totals					205.25		100

Sector 44	EPA Category	Drainage	Street Miles	Curb/Pickup Miles	Total Pick up (Cubic Yards)	Unit Pick up (Cubic Yds/Mile)	Completeness (%)
	Arterial	OC		0.00			
		CG			1.41	No data reported	
	Residential	OC					
		CG			27.28		
		Mixed			333.15		100
Totals					333.15		100

Sector 45	EPA Category	Drainage	Street Miles	Curb/Pickup Miles	Total Pick up (Cubic Yards)	Unit Pick up (Cubic Yds/Mile)	Completeness (%)
	Arterial	OC		0.00			
		CG			3.00	10.25	3.42
	Residential	OC					
		CG			6.67		
		Mixed			141.05		100
Totals					151.3		100

Sector 46	EPA Category	Drainage	Street Miles	Curb/Pickup Miles	Total Pick up (Cubic Yards)	Unit Pick up (Cubic Yds/Mile)	Completeness (%)
	Arterial	OC		0.00			
		CG			0.00		
	Residential	OC					
		CG			15.33		
		Mixed			166.07		100
Totals				15.33	166.07		100

Sector 47	EPA Category	Drainage	Street Miles	Curb/Pickup Miles	Total Pick up (Cubic Yards)	Unit Pick up (Cubic Yds/Mile)	Completeness (%)
	Arterial	OC		0.00			
		CG			0.00		
	Residential	OC					
		CG			12.89		
		Mixed			136		100
Totals					136		100

Anchorage MS4 Street Sweeping Report for 2012

Sector 48	EPA Category	Drainage	Street Miles	Curb/Pickup Miles	Total Pick up (Cubic Yards)	Unit Pick up (Cubic Yds/Mile)	Completeness (%)
	Arterial	OC		0.00			
		CG		5.11	87.38	17.11	100
	Residential	OC					
		CG			30.45		
		Mixed			401.79		100
Totals					489.17		100

Sector 49	EPA Category	Drainage	Street Miles	Curb/Pickup Miles	Total Pick up (Cubic Yards)	Unit Pick up (Cubic Yds/Mile)	Completeness (%)
	Arterial	OC		0.00			
		CG			0.00		
	Residential	OC					
		CG			14.91		
		Mixed			255.05		100
Totals					255.05		100

Sector 50	EPA Category	Drainage	Street Miles	Curb/Pickup Miles	Total Pick up (Cubic Yards)	Unit Pick up (Cubic Yds/Mile)	Completeness (%)
	Arterial	OC		0.00			
		CG			12.47	88.68	7.11
	Residential	OC					
		CG			17.10		
		Mixed			242.55		100
Totals					331.23		100

Sector 51	EPA Category	Drainage	Street Miles	Curb/Pickup Miles	Total Pick up (Cubic Yards)	Unit Pick up (Cubic Yds/Mile)	Completeness (%)
	Arterial	OC		0.00			
		CG			0.00		
	Residential	OC					
		CG			14.71		
		Mixed			199.35		100
Totals					199.35		100

Sector 52	EPA Category	Drainage	Street Miles	Curb/Pickup Miles	Total Pick up (Cubic Yards)	Unit Pick up (Cubic Yds/Mile)	Completeness (%)
	Arterial	OC		0.00			
		CG			1.85	88.98	48.05
	Residential	OC					
		CG			20.26		
		Mixed			139.31		100
Totals					228.29		100

Sector 53	EPA Category	Drainage	Street Miles	Curb/Pickup Miles	Total Pick up (Cubic Yards)	Unit Pick up (Cubic Yds/Mile)	Completeness (%)
	Arterial	OC		0.00			
		CG			0.00		
	Residential	OC					
		CG			12.25		
		Mixed			90.7		100
Totals					90.7		100

Sector 54	EPA Category	Drainage	Street Miles	Curb/Pickup Miles	Total Pick up (Cubic Yards)	Unit Pick up (Cubic Yds/Mile)	Completeness (%)
	Arterial	OC		0.00			
		CG			2.50	11.38	4.55
	Residential	OC					
		CG			0.74		
		Mixed			39.5		100
Totals					50.88		100

Sector 55	EPA Category	Drainage	Street Miles	Curb/Pickup Miles	Total Pick up (Cubic Yards)	Unit Pick up (Cubic Yds/Mile)	Completeness (%)
	Arterial	OC		0.00			
		CG			0.00		
	Residential	OC					
		CG			2.32		
		Mixed			136.88		100
Totals					136.88		100

Anchorage MS4 Street Sweeping Report for 2012

Sector 56	EPA Category	Drainage	Street Miles	Curb/Pickup Miles	Total Pick up (Cubic Yards)	Unit Pick up (Cubic Yds/Mile)	Completeness (%)
	Arterial	OC		0.00			
		CG		0.00			
	Residential	OC					
		CG			14.21		
		Mixed			162.5		100
Totals					162.5		100

Sector 57	EPA Category	Drainage	Street Miles	Curb/Pickup Miles	Total Pick up (Cubic Yards)	Unit Pick up (Cubic Yds/Mile)	Completeness (%)
	Arterial	OC		0.00			
		CG		1.48	60.88	41.14	100
	Residential	OC					
		CG			32.15		
		Mixed			171.2		100
Totals					232.08		100

Sector 58	EPA Category	Drainage	Street Miles	Curb/Pickup Miles	Total Pick up (Cubic Yards)	Unit Pick up (Cubic Yds/Mile)	Completeness (%)
	Arterial	OC		0.00			
		CG			0.00		
	Residential	OC		0.00			
		CG			1.32	110.38	83.37
		Mixed					100
Totals				1.32	110.38	83.62	100

Sector 59	EPA Category	Drainage	Street Miles	Curb/Pickup Miles	Total Pick up (Cubic Yards)	Unit Pick up (Cubic Yds/Mile)	Completeness (%)
	Arterial	OC		0.00			
		CG			0.00		
	Residential	OC			43.27		100
		CG			0.00		
		Mixed					
Totals					43.27		100

Sector 60	EPA Category	Drainage	Street Miles	Curb/Pickup Miles	Total Pick up (Cubic Yards)	Unit Pick up (Cubic Yds/Mile)	Completeness (%)
	Arterial	OC					
		CG					
		Mixed				113.75	
	Other	OC					
		CG					
		Mixed					
Totals					113.75		

Anchorage MS4 Street Sweeping Report for 2012

Table 5-8 ARDSA Summer 2012 Sweeping Report

2012 Summer ARDSA

Completion Range 6/15/2012 - 8/1/2012

Sector 1	EPA Category	Drainage	Street Miles	Curb/Pickup Miles	Total Pick up (Cubic Yards)	Unit Pick up (Cubic Yds/Mile)	Completeness (%)
	Residential	OC					
		CG		10.68			
		Mixed			17		100
Totals					17		100

Sector 2	EPA Category	Drainage	Street Miles	Curb/Pickup Miles	Total Pick up (Cubic Yards)	Unit Pick up (Cubic Yds/Mile)	Completeness (%)
	Arterial	OC		0.00			
		CG		7.01	55.3	7.89	100
	Residential	OC					
		CG		10.49			
		Mixed			79		100
Totals					134.3		100

Sector 3	EPA Category	Drainage	Street Miles	Curb/Pickup Miles	Total Pick up (Cubic Yards)	Unit Pick up (Cubic Yds/Mile)	Completeness (%)
	Arterial	OC		0.00			
		CG		0.56	2.9	5.16	100
	Residential	OC					
		CG		13.44			
		Mixed			24.5		100
Totals					27.4		100

Sector 4	EPA Category	Drainage	Street Miles	Curb/Pickup Miles	Total Pick up (Cubic Yards)	Unit Pick up (Cubic Yds/Mile)	Completeness (%)
	Arterial	OC		0.00			
		CG		8.57	62.75	7.32	100
	Residential	OC					
		CG		12.89			
		Mixed			No data reported		0
Totals					62.75		

Sector 5	EPA Category	Drainage	Street Miles	Curb/Pickup Miles	Total Pick up (Cubic Yards)	Unit Pick up (Cubic Yds/Mile)	Completeness (%)
	Arterial	OC		0.00			
		CG		6.59	35.5	5.39	100
	Residential	OC					
		CG		34.24			
		Mixed			91.05		100
Totals					126.55		100

Sector 6	EPA Category	Drainage	Street Miles	Curb/Pickup Miles	Total Pick up (Cubic Yards)	Unit Pick up (Cubic Yds/Mile)	Completeness (%)
	Arterial	OC		0.00			
		CG		0.00			
	Residential	OC					
		CG		3.03			
		Mixed			17.7		100
Totals					17.7		100

Sector 7	EPA Category	Drainage	Street Miles	Curb/Pickup Miles	Total Pick up (Cubic Yards)	Unit Pick up (Cubic Yds/Mile)	Completeness (%)
	Arterial	OC		0.00			
		CG		1.95	28.1	14.38	100
	Residential	OC					
		CG		46.35			
		Mixed			92.8		100
Totals					120.9		100

Anchorage MS4 Street Sweeping Report for 2012

Sector 8	EPA Category	Drainage	Street Miles	Curb/Pickup Miles	Total Pick up (Cubic Yards)	Unit Pick up (Cubic Yds/Mile)	Completeness (%)
	Arterial	OC		0.00			
		CG		0.00			
	Residential	OC					
		CG			12.13		
		Mixed			20.4		100
Totals					20.4		100

Sector 9	EPA Category	Drainage	Street Miles	Curb/Pickup Miles	Total Pick up (Cubic Yards)	Unit Pick up (Cubic Yds/Mile)	Completeness (%)
	Arterial	OC		0.00			
		CG		0.00			
	Residential	OC					
		CG			12.04		
		Mixed			19.6		100
Totals					19.6		100

Sector 10	EPA Category	Drainage	Street Miles	Curb/Pickup Miles	Total Pick up (Cubic Yards)	Unit Pick up (Cubic Yds/Mile)	Completeness (%)
	Arterial	OC		0.00			
		CG		0.00			
	Residential	OC					
		CG			11.19		
		Mixed			18		100
Totals					18		100

Sector 11	EPA Category	Drainage	Street Miles	Curb/Pickup Miles	Total Pick up (Cubic Yards)	Unit Pick up (Cubic Yds/Mile)	Completeness (%)
	Arterial	OC					
		CG		1.16			
		Mixed				No data reported	0
	Residential	OC					
		CG			20.57		
		Mixed			66.65		100
Totals					66.65		100

Sector 12	EPA Category	Drainage	Street Miles	Curb/Pickup Miles	Total Pick up (Cubic Yards)	Unit Pick up (Cubic Yds/Mile)	Completeness (%)
	Arterial	OC		0.00			
		CG		2.38	29.84	12.55	100
	Residential	OC					
		CG			14.06		
		Mixed			48.45		100
Totals					78.29		100

Sector 13	EPA Category	Drainage	Street Miles	Curb/Pickup Miles	Total Pick up (Cubic Yards)	Unit Pick up (Cubic Yds/Mile)	Completeness (%)
	Arterial	OC		0.00			
		CG		0.36	No data reported		0
	Residential	OC					
		CG			5.84		
		Mixed			15.3		100
Totals					15.3		100

Sector 14	EPA Category	Drainage	Street Miles	Curb/Pickup Miles	Total Pick up (Cubic Yards)	Unit Pick up (Cubic Yds/Mile)	Completeness (%)
	Arterial	OC		0.00			
		CG		3.53	13.7	3.88	100
	Residential	OC		0.00			
		CG			11.91	2.58	100
Totals				15.44	44.45	2.88	100

Sector 15	EPA Category	Drainage	Street Miles	Curb/Pickup Miles	Total Pick up (Cubic Yards)	Unit Pick up (Cubic Yds/Mile)	Completeness (%)
	Arterial	OC		0.00			
		CG		6.22	34.7	5.58	100
	Residential	OC		0.00			
		CG			23.57	1.97	100
Totals				29.79	81.2	2.73	100

Anchorage MS4 Street Sweeping Report for 2012

Sector 16	EPA Category	Drainage	Street Miles	Curb/Pickup Miles	Total Pick up (Cubic Yards)	Unit Pick up (Cubic Yds/Mile)	Completeness (%)
	Arterial	OC		0.00			
		CG		7.08	25.8	3.65	100
	Residential	OC		8.23			
		CG			24		100
Totals					49.8		100

Sector 17	EPA Category	Drainage	Street Miles	Curb/Pickup Miles	Total Pick up (Cubic Yards)	Unit Pick up (Cubic Yds/Mile)	Completeness (%)
	Arterial	OC		0.00			
		CG		1.53	6.5	4.25	100
	Residential	OC					
		CG		15.49			
		Mixed			18		100
Totals					24.5		100

Sector 18	EPA Category	Drainage	Street Miles	Curb/Pickup Miles	Total Pick up (Cubic Yards)	Unit Pick up (Cubic Yds/Mile)	Completeness (%)
	Arterial	OC		0.00			
		CG		2.00	6.5	3.25	100
	Residential	OC		0.00			
		CG		12.33	22	1.78	100
Totals				14.33	28.5	1.99	100

Sector 19	EPA Category	Drainage	Street Miles	Curb/Pickup Miles	Total Pick up (Cubic Yards)	Unit Pick up (Cubic Yds/Mile)	Completeness (%)
	Arterial	OC		0.00			
		CG		2.00	4.55	2.28	100
	Residential	OC		0.00			
		CG		12.09	29	2.40	100
Totals				14.09	33.55	2.38	100

Sector 20	EPA Category	Drainage	Street Miles	Curb/Pickup Miles	Total Pick up (Cubic Yards)	Unit Pick up (Cubic Yds/Mile)	Completeness (%)
	Arterial	OC		0.00			
		CG		0.00			
	Residential	OC					
		CG		7.41			
		Mixed			12		100
Totals					12		100

Sector 21	EPA Category	Drainage	Street Miles	Curb/Pickup Miles	Total Pick up (Cubic Yards)	Unit Pick up (Cubic Yds/Mile)	Completeness (%)
	Arterial	OC		0.00			
		CG		0.00			
	Residential	OC					
		CG		18.57			
		Mixed			55.5		100
Totals					55.5		100

Sector 22	EPA Category	Drainage	Street Miles	Curb/Pickup Miles	Total Pick up (Cubic Yards)	Unit Pick up (Cubic Yds/Mile)	Completeness (%)
	Arterial	OC		0.00			
		CG		0.00			
	Residential	OC					
		CG		24.77			
		Mixed			51.8		100
Totals					51.8		100

Sector 23	EPA Category	Drainage	Street Miles	Curb/Pickup Miles	Total Pick up (Cubic Yards)	Unit Pick up (Cubic Yds/Mile)	Completeness (%)
	Arterial	OC		0.00			
		CG		3.91	12.25	3.13	100
	Residential	OC					
		CG		17.67			
		Mixed			43.26		100
Totals					55.51		100

Anchorage MS4 Street Sweeping Report for 2012

Sector 24	EPA Category	Drainage	Street Miles	Curb/Pickup Miles	Total Pick up (Cubic Yards)	Unit Pick up (Cubic Yds/Mile)	Completeness (%)
	Arterial	OC		0.00			
		CG		7.53	21.29	2.83	100
	Residential	OC					
		CG			16.95		
		Mixed			55.38		100
Totals					76.67		100

Sector 25	EPA Category	Drainage	Street Miles	Curb/Pickup Miles	Total Pick up (Cubic Yards)	Unit Pick up (Cubic Yds/Mile)	Completeness (%)
	Arterial	OC		0.00			
		CG			5.37	16.95	3.16
	Residential	OC		0.00			
		CG			5.23	24.48	4.68
Totals				10.60	41.43	3.91	100

Sector 26	EPA Category	Drainage	Street Miles	Curb/Pickup Miles	Total Pick up (Cubic Yards)	Unit Pick up (Cubic Yds/Mile)	Completeness (%)
	Arterial	OC		0.00			
		CG			8.01	12.4	1.55
	Residential	OC					
		CG			24.29		
		Mixed			49.51		100
Totals					61.91		100

Sector 27	EPA Category	Drainage	Street Miles	Curb/Pickup Miles	Total Pick up (Cubic Yards)	Unit Pick up (Cubic Yds/Mile)	Completeness (%)
	Arterial	OC		0.00			
		CG			4.10	No data reported	
	Residential	OC					
		CG			4.83		
		Mixed			18		100
Totals					18		100

Sector 28	EPA Category	Drainage	Street Miles	Curb/Pickup Miles	Total Pick up (Cubic Yards)	Unit Pick up (Cubic Yds/Mile)	Completeness (%)
	Arterial	OC		0.00			
		CG			0.00		
	Residential	OC					
		CG			16.26		
		Mixed			18		100
Totals					18		100

Sector 29	EPA Category	Drainage	Street Miles	Curb/Pickup Miles	Total Pick up (Cubic Yards)	Unit Pick up (Cubic Yds/Mile)	Completeness (%)
	Arterial	OC		0.00			
		CG			0.00		
	Residential	OC					
		CG			10.25		
		Mixed			18		100
Totals					18		100

Sector 30	EPA Category	Drainage	Street Miles	Curb/Pickup Miles	Total Pick up (Cubic Yards)	Unit Pick up (Cubic Yds/Mile)	Completeness (%)
	Arterial	OC		0.00			
		CG			0.00		
	Residential	OC		0.00			
		CG			12.89	24.4	1.89
Totals				12.89	24.4	1.89	100

Sector 31	EPA Category	Drainage	Street Miles	Curb/Pickup Miles	Total Pick up (Cubic Yards)	Unit Pick up (Cubic Yds/Mile)	Completeness (%)
	Arterial	OC		0.00			
		CG			0.00		
	Residential	OC					
		CG			9.92		
		Mixed			19.6		100
Totals					19.6		100

Anchorage MS4 Street Sweeping Report for 2012

Sector 32	EPA Category	Drainage	Street Miles	Curb/Pickup Miles	Total Pick up (Cubic Yards)	Unit Pick up (Cubic Yds/Mile)	Completeness (%)
	Arterial	OC		0.00			
		CG		0.00			
	Residential	OC					
		CG			13.78		
		Mixed			25.6		100
Totals					25.6		100

Sector 33	EPA Category	Drainage	Street Miles	Curb/Pickup Miles	Total Pick up (Cubic Yards)	Unit Pick up (Cubic Yds/Mile)	Completeness (%)
	Arterial	OC		0.00			
		CG		3.44	16.84	4.90	100
	Residential	OC					
		CG			10.79		
		Mixed			44.88		100
Totals					61.72		100

Sector 34	EPA Category	Drainage	Street Miles	Curb/Pickup Miles	Total Pick up (Cubic Yards)	Unit Pick up (Cubic Yds/Mile)	Completeness (%)
	Arterial	OC		0.00			
		CG		4.98	17.75	3.56	100
	Residential	OC					
		CG			13.09		
		Mixed			35.75		100
Totals					53.5		100

Sector 35	EPA Category	Drainage	Street Miles	Curb/Pickup Miles	Total Pick up (Cubic Yards)	Unit Pick up (Cubic Yds/Mile)	Completeness (%)
	Arterial	OC		0.00			
		CG		4.00	7.2	1.80	100
	Residential	OC					
		CG			12.82		
		Mixed			18		100
Totals					25.2		100

Sector 36	EPA Category	Drainage	Street Miles	Curb/Pickup Miles	Total Pick up (Cubic Yards)	Unit Pick up (Cubic Yds/Mile)	Completeness (%)
	Arterial	OC		0.00			
		CG		3.90	6.5	1.67	100
	Residential	OC					
		CG			3.30		
		Mixed			6		100
Totals					12.5		100

Sector 37	EPA Category	Drainage	Street Miles	Curb/Pickup Miles	Total Pick up (Cubic Yards)	Unit Pick up (Cubic Yds/Mile)	Completeness (%)
	Arterial	OC		0.00			
		CG		0.99	6	6.06	100
	Residential	OC					
		CG			16.07		
		Mixed			52.75		100
Totals					58.75		100

Sector 38	EPA Category	Drainage	Street Miles	Curb/Pickup Miles	Total Pick up (Cubic Yards)	Unit Pick up (Cubic Yds/Mile)	Completeness (%)
	Arterial	OC		0.00			
		CG		3.79	21	5.54	100
	Residential	OC					
		CG			21.37		
		Mixed			62.5		100
Totals					83.5		100

Sector 39	EPA Category	Drainage	Street Miles	Curb/Pickup Miles	Total Pick up (Cubic Yards)	Unit Pick up (Cubic Yds/Mile)	Completeness (%)
	Arterial	OC		0.00			
		CG		0.00			
	Residential	OC					
		CG			12.82		
		Mixed			68.25		100
Totals					68.25		100

Anchorage MS4 Street Sweeping Report for 2012

Sector 40	EPA Category	Drainage	Street Miles	Curb/Pickup Miles	Total Pick up (Cubic Yards)	Unit Pick up (Cubic Yds/Mile)	Completeness (%)
	Arterial	OC		0.00			
		CG		3.00	9.4	3.13	100
	Residential	OC					
		CG			10.06		
		Mixed			27.32		100
Totals					36.72		100

Sector 41	EPA Category	Drainage	Street Miles	Curb/Pickup Miles	Total Pick up (Cubic Yards)	Unit Pick up (Cubic Yds/Mile)	Completeness (%)
	Arterial	OC		0.00			
		CG			0.00		
	Residential	OC					
		CG			15.38		
		Mixed			3.57		100
Totals					3.57		100

Sector 42	EPA Category	Drainage	Street Miles	Curb/Pickup Miles	Total Pick up (Cubic Yards)	Unit Pick up (Cubic Yds/Mile)	Completeness (%)
	Arterial	OC		0.00			
		CG			0.00		
	Residential	OC					
		CG			13.15		
		Mixed			8.5		100
Totals					8.5		100

Sector 43	EPA Category	Drainage	Street Miles	Curb/Pickup Miles	Total Pick up (Cubic Yards)	Unit Pick up (Cubic Yds/Mile)	Completeness (%)
	Arterial	OC		0.00			
		CG			0.00		
	Residential	OC					
		CG			12.82		
		Mixed			31		100
Totals					31		100

Sector 44	EPA Category	Drainage	Street Miles	Curb/Pickup Miles	Total Pick up (Cubic Yards)	Unit Pick up (Cubic Yds/Mile)	Completeness (%)
	Arterial	OC		0.00			
		CG			1.41	No data reported	
	Residential	OC					
		CG			27.28		
		Mixed			57.75		100
Totals					57.75		100

Sector 45	EPA Category	Drainage	Street Miles	Curb/Pickup Miles	Total Pick up (Cubic Yards)	Unit Pick up (Cubic Yds/Mile)	Completeness (%)
	Arterial	OC		0.00			
		CG			3.00	9.4	3.13
	Residential	OC					
		CG			6.67		
		Mixed			21.57		100
Totals					30.97		100

Sector 46	EPA Category	Drainage	Street Miles	Curb/Pickup Miles	Total Pick up (Cubic Yards)	Unit Pick up (Cubic Yds/Mile)	Completeness (%)
	Arterial	OC		0.00			
		CG			0.00		
	Residential	OC					
		CG			15.33		
		Mixed			16.45		100
Totals					16.45		100

Sector 47	EPA Category	Drainage	Street Miles	Curb/Pickup Miles	Total Pick up (Cubic Yards)	Unit Pick up (Cubic Yds/Mile)	Completeness (%)
	Arterial	OC		0.00			
		CG			0.00		
	Residential	OC					
		CG			12.89		
		Mixed			37.5		100
Totals					37.5		100

Anchorage MS4 Street Sweeping Report for 2012

Sector 48	EPA Category	Drainage	Street Miles	Curb/Pickup Miles	Total Pick up (Cubic Yards)	Unit Pick up (Cubic Yds/Mile)	Completeness (%)
	Arterial	OC		0.00			
		CG		5.11	10	1.96	100
	Residential	OC					
		CG		30.45			
		Mixed			37.25		100
Totals					47.25		100

Sector 49	EPA Category	Drainage	Street Miles	Curb/Pickup Miles	Total Pick up (Cubic Yards)	Unit Pick up (Cubic Yds/Mile)	Completeness (%)
	Arterial	OC		0.00			
		CG		0.00			
	Residential	OC					
		CG		14.91			
		Mixed			45.63		100
Totals					45.63		100

Sector 50	EPA Category	Drainage	Street Miles	Curb/Pickup Miles	Total Pick up (Cubic Yards)	Unit Pick up (Cubic Yds/Mile)	Completeness (%)
	Arterial	OC		0.00			
		CG		12.47	24.9	2.00	100
	Residential	OC					
		CG		17.10			
		Mixed			65.57		100
Totals					90.47		100

Sector 51	EPA Category	Drainage	Street Miles	Curb/Pickup Miles	Total Pick up (Cubic Yards)	Unit Pick up (Cubic Yds/Mile)	Completeness (%)
	Arterial	OC		0.00			
		CG		0.00			
	Residential	OC					
		CG		14.71			
		Mixed			7.13		100
Totals					7.13		100

Sector 52	EPA Category	Drainage	Street Miles	Curb/Pickup Miles	Total Pick up (Cubic Yards)	Unit Pick up (Cubic Yds/Mile)	Completeness (%)
	Arterial	OC		0.00			
		CG		1.85	17	9.18	100
	Residential	OC					
		CG		20.26			
		Mixed			90.38		100
Totals					107.38		100

Sector 53	EPA Category	Drainage	Street Miles	Curb/Pickup Miles	Total Pick up (Cubic Yards)	Unit Pick up (Cubic Yds/Mile)	Completeness (%)
	Arterial	OC		0.00			
		CG		0.00			
	Residential	OC					
		CG		12.25			
		Mixed			36.25		100
Totals					36.25		100

Sector 54	EPA Category	Drainage	Street Miles	Curb/Pickup Miles	Total Pick up (Cubic Yards)	Unit Pick up (Cubic Yds/Mile)	Completeness (%)
	Arterial	OC		0.00			
		CG		2.50	12.6	5.04	100
	Residential	OC					
		CG		0.74			
		Mixed			14		100
Totals					26.6		100

Sector 55	EPA Category	Drainage	Street Miles	Curb/Pickup Miles	Total Pick up (Cubic Yards)	Unit Pick up (Cubic Yds/Mile)	Completeness (%)
	Arterial	OC		0.00			
		CG		0.00			
	Residential	OC					
		CG		2.32			
		Mixed			46		100
Totals					46		100

Anchorage MS4 Street Sweeping Report for 2012

Sector 56	EPA Category	Drainage	Street Miles	Curb/Pickup Miles	Total Pick up (Cubic Yards)	Unit Pick up (Cubic Yds/Mile)	Completeness (%)
	Arterial	OC		0.00			
		CG		0.00			
	Residential	OC					
		CG			14.21		
		Mixed			82.25		100
Totals					82.25		100

Sector 57	EPA Category	Drainage	Street Miles	Curb/Pickup Miles	Total Pick up (Cubic Yards)	Unit Pick up (Cubic Yds/Mile)	Completeness (%)
	Arterial	OC		0.00			
		CG		1.48	6.2	4.19	100
	Residential	OC					
		CG			32.15		
		Mixed			49		100
Totals					55.2		100

Sector 58	EPA Category	Drainage	Street Miles	Curb/Pickup Miles	Total Pick up (Cubic Yards)	Unit Pick up (Cubic Yds/Mile)	Completeness (%)
	Arterial	OC		0.00			
		CG			0.00		
	Residential	OC		0.00			
		CG			1.32	30.85	23.37
		Mixed					100
Totals				1.32	30.85	23.37	100

Sector 59	EPA Category	Drainage	Street Miles	Curb/Pickup Miles	Total Pick up (Cubic Yards)	Unit Pick up (Cubic Yds/Mile)	Completeness (%)
	Arterial	OC		0.00			
		CG			0.00		
	Residential	OC			0.5		100
		CG			0.00		
		Mixed					
Totals					0.5		100

Sector 60	EPA Category	Drainage	Street Miles	Curb/Pickup Miles	Total Pick up (Cubic Yards)	Unit Pick up (Cubic Yds/Mile)	Completeness (%)
	Arterial	OC					
		CG					
		Mixed			16.25		
	Other	OC					
		CG					
		Mixed					
Totals					16.25		

Anchorage MS4 Street Sweeping Report for 2012

Table 5-9 ARDSA Fall 2012 Sweeping Report

2012 Fall ARDSA

Completion Range 9/1/2012 - 10/12/2012

Sector 1	EPA Category	Drainage	Street Miles	Curb/Pickup Miles	Total Pick up (Cubic Yards)	Unit Pick up (Cubic Yds/Mile)	Completeness (%)
	Residential	OC					
		CG		10.68			
		Mixed			27		100
Totals					27		100
Sector 2	EPA Category	Drainage	Street Miles	Curb/Pickup Miles	Total Pick up (Cubic Yards)	Unit Pick up (Cubic Yds/Mile)	Completeness (%)
	Arterial	OC		0.00			
		CG		7.01	28.33	4.04	100
	Residential	OC					
		CG		10.49			
		Mixed			No data reported		0
Totals					28.33		
Sector 3	EPA Category	Drainage	Street Miles	Curb/Pickup Miles	Total Pick up (Cubic Yards)	Unit Pick up (Cubic Yds/Mile)	Completeness (%)
	Arterial	OC		0.00			
		CG		0.56	6.5	11.57	100
	Residential	OC					
		CG		13.44			
		Mixed			76.5		100
Totals					83		100
Sector 4	EPA Category	Drainage	Street Miles	Curb/Pickup Miles	Total Pick up (Cubic Yards)	Unit Pick up (Cubic Yds/Mile)	Completeness (%)
	Arterial	OC		0.00			
		CG		8.57	27.5	3.21	100
	Residential	OC					
		CG		12.89			
		Mixed			No data reported		0
Totals					27.5		
Sector 5	EPA Category	Drainage	Street Miles	Curb/Pickup Miles	Total Pick up (Cubic Yards)	Unit Pick up (Cubic Yds/Mile)	Completeness (%)
	Arterial	OC		0.00			
		CG		6.59	20.45	3.10	100
	Residential	OC					
		CG		34.24			
		Mixed			151		100
Totals					171.45		100
Sector 6	EPA Category	Drainage	Street Miles	Curb/Pickup Miles	Total Pick up (Cubic Yards)	Unit Pick up (Cubic Yds/Mile)	Completeness (%)
	Arterial	OC		0.00			
		CG		0.00			
	Residential	OC					
		CG		3.03			
		Mixed			10.75		100
Totals					10.75		100
Sector 7	EPA Category	Drainage	Street Miles	Curb/Pickup Miles	Total Pick up (Cubic Yards)	Unit Pick up (Cubic Yds/Mile)	Completeness (%)
	Arterial	OC		0.00			
		CG		1.95	10.13	5.18	100
	Residential	OC					
		CG		46.35			
		Mixed			295.38		100
Totals					305.51		100

Anchorage MS4 Street Sweeping Report for 2012

Sector 8	EPA Category	Drainage	Street Miles	Curb/Pickup Miles	Total Pick up (Cubic Yards)	Unit Pick up (Cubic Yds/Mile)	Completeness (%)
	Arterial	OC		0.00			
		CG		0.00			
	Residential	OC					
		CG			12.13		
		Mixed			36.5		100
Totals					36.5		100

Sector 9	EPA Category	Drainage	Street Miles	Curb/Pickup Miles	Total Pick up (Cubic Yards)	Unit Pick up (Cubic Yds/Mile)	Completeness (%)
	Arterial	OC		0.00			
		CG		0.00			
	Residential	OC					
		CG			12.04		
		Mixed			173.93		100
Totals					173.93		100

Sector 10	EPA Category	Drainage	Street Miles	Curb/Pickup Miles	Total Pick up (Cubic Yards)	Unit Pick up (Cubic Yds/Mile)	Completeness (%)
	Arterial	OC		0.00			
		CG		0.00			
	Residential	OC					
		CG			11.19		
		Mixed			169.5		100
Totals					169.5		100

Sector 11	EPA Category	Drainage	Street Miles	Curb/Pickup Miles	Total Pick up (Cubic Yards)	Unit Pick up (Cubic Yds/Mile)	Completeness (%)
	Arterial	OC					
		CG		1.16			
		Mixed				10.75	100
	Residential	OC					
		CG			20.57		
		Mixed			180.8		100
Totals					191.55		100

Sector 12	EPA Category	Drainage	Street Miles	Curb/Pickup Miles	Total Pick up (Cubic Yards)	Unit Pick up (Cubic Yds/Mile)	Completeness (%)
	Arterial	OC		0.00			
		CG		2.38	11.03	4.64	100
	Residential	OC					
		CG			14.06		
		Mixed			69.3		100
Totals					80.33		100

Sector 13	EPA Category	Drainage	Street Miles	Curb/Pickup Miles	Total Pick up (Cubic Yards)	Unit Pick up (Cubic Yds/Mile)	Completeness (%)
	Arterial	OC		0.00			
		CG		0.36	4.25	11.74	100
	Residential	OC					
		CG			5.84		
		Mixed			43		100
Totals					47.25		100

Sector 14	EPA Category	Drainage	Street Miles	Curb/Pickup Miles	Total Pick up (Cubic Yards)	Unit Pick up (Cubic Yds/Mile)	Completeness (%)
	Arterial	OC		0.00			
		CG		3.53	15.5	4.39	100
	Residential	OC		0.00			
		CG			11.91	107.38	9.02
		Mixed			7.96		100
Totals				15.44	122.88	7.96	100

Sector 15	EPA Category	Drainage	Street Miles	Curb/Pickup Miles	Total Pick up (Cubic Yards)	Unit Pick up (Cubic Yds/Mile)	Completeness (%)
	Arterial	OC		0.00			
		CG		6.22	27.93	4.49	100
	Residential	OC		0.00			
		CG			23.57	143	6.07
		Mixed			5.74		100
Totals				29.79	170.93	5.74	100

Anchorage MS4 Street Sweeping Report for 2012

Sector 16	EPA Category	Drainage	Street Miles	Curb/Pickup Miles	Total Pick up (Cubic Yards)	Unit Pick up (Cubic Yds/Mile)	Completeness (%)
	Arterial	OC		0.00			
		CG		7.08	10.25	1.45	100
	Residential	OC					
		CG			8.23		
		Mixed			80		100
Totals					90.25		100

Sector 17	EPA Category	Drainage	Street Miles	Curb/Pickup Miles	Total Pick up (Cubic Yards)	Unit Pick up (Cubic Yds/Mile)	Completeness (%)
	Arterial	OC		0.00			
		CG		1.53	6.5	4.25	100
	Residential	OC					
		CG			15.49		
		Mixed			162.5		100
Totals					169		100

Sector 18	EPA Category	Drainage	Street Miles	Curb/Pickup Miles	Total Pick up (Cubic Yards)	Unit Pick up (Cubic Yds/Mile)	Completeness (%)
	Arterial	OC		0.00			
		CG		2.00	6.5	3.25	100
	Residential	OC		0.00			
		CG			12.33	10.95	100
Totals				14.33	141.5	9.87	100

Sector 19	EPA Category	Drainage	Street Miles	Curb/Pickup Miles	Total Pick up (Cubic Yards)	Unit Pick up (Cubic Yds/Mile)	Completeness (%)
	Arterial	OC		0.00			
		CG		2.00	6.5	3.25	100
	Residential	OC		0.00			
		CG			12.09	7.93	0.66
Totals				14.09	14.43	1.02	100

Sector 20	EPA Category	Drainage	Street Miles	Curb/Pickup Miles	Total Pick up (Cubic Yards)	Unit Pick up (Cubic Yds/Mile)	Completeness (%)
	Arterial	OC		0.00			
		CG		0.00			
	Residential	OC					
		CG			7.41		
		Mixed			71		100
Totals					71		100

Sector 21	EPA Category	Drainage	Street Miles	Curb/Pickup Miles	Total Pick up (Cubic Yards)	Unit Pick up (Cubic Yds/Mile)	Completeness (%)
	Arterial	OC		0.00			
		CG		0.00			
	Residential	OC					
		CG			18.57		
		Mixed			55.85		100
Totals					55.85		100

Sector 22	EPA Category	Drainage	Street Miles	Curb/Pickup Miles	Total Pick up (Cubic Yards)	Unit Pick up (Cubic Yds/Mile)	Completeness (%)
	Arterial	OC		0.00			
		CG		0.00			
	Residential	OC					
		CG			24.77		
		Mixed			9.8		100
Totals					9.8		100

Sector 23	EPA Category	Drainage	Street Miles	Curb/Pickup Miles	Total Pick up (Cubic Yards)	Unit Pick up (Cubic Yds/Mile)	Completeness (%)
	Arterial	OC		0.00			
		CG		3.91	13.25	3.39	100
	Residential	OC					
		CG			17.67		
		Mixed			No data reported		0
Totals					13.25		

Anchorage MS4 Street Sweeping Report for 2012

Sector 24	EPA Category	Drainage	Street Miles	Curb/Pickup Miles	Total Pick up (Cubic Yards)	Unit Pick up (Cubic Yds/Mile)	Completeness (%)
	Arterial	OC		0.00			
		CG		7.53	15.75	2.09	100
	Residential	OC					
		CG			16.95		
		Mixed			1.25		100
Totals					17		100

Sector 25	EPA Category	Drainage	Street Miles	Curb/Pickup Miles	Total Pick up (Cubic Yards)	Unit Pick up (Cubic Yds/Mile)	Completeness (%)
	Arterial	OC		0.00			
		CG			5.37	23.38	4.35
	Residential	OC		0.00			
		CG			5.23	4.38	0.84
Totals				10.60	27.76	2.62	100

Sector 26	EPA Category	Drainage	Street Miles	Curb/Pickup Miles	Total Pick up (Cubic Yards)	Unit Pick up (Cubic Yds/Mile)	Completeness (%)
	Arterial	OC		0.00			
		CG			8.01	13.5	1.69
	Residential	OC					
		CG			24.29		
		Mixed			22		100
Totals					35.5		100

Sector 27	EPA Category	Drainage	Street Miles	Curb/Pickup Miles	Total Pick up (Cubic Yards)	Unit Pick up (Cubic Yds/Mile)	Completeness (%)
	Arterial	OC		0.00			
		CG			4.10	15.5	3.78
	Residential	OC					
		CG			4.83		
		Mixed			24.63		100
Totals					40.13		100

Sector 28	EPA Category	Drainage	Street Miles	Curb/Pickup Miles	Total Pick up (Cubic Yards)	Unit Pick up (Cubic Yds/Mile)	Completeness (%)
	Arterial	OC		0.00			
		CG			0.00		
	Residential	OC					
		CG			16.26		0
		Mixed			No data reported		0
Totals					0		0

Sector 29	EPA Category	Drainage	Street Miles	Curb/Pickup Miles	Total Pick up (Cubic Yards)	Unit Pick up (Cubic Yds/Mile)	Completeness (%)
	Arterial	OC		0.00			
		CG			0.00		
	Residential	OC					
		CG			10.25		
		Mixed			60.5		100
Totals					60.5		100

Sector 30	EPA Category	Drainage	Street Miles	Curb/Pickup Miles	Total Pick up (Cubic Yards)	Unit Pick up (Cubic Yds/Mile)	Completeness (%)
	Arterial	OC		0.00			
		CG			0.00		
	Residential	OC		0.00			
		CG			12.89	156	12.10
Totals				12.89	156	12.10	100

Sector 31	EPA Category	Drainage	Street Miles	Curb/Pickup Miles	Total Pick up (Cubic Yards)	Unit Pick up (Cubic Yds/Mile)	Completeness (%)
	Arterial	OC		0.00			
		CG			0.00		
	Residential	OC					
		CG			9.92		
		Mixed			20.13		100
Totals					20.13		100

Anchorage MS4 Street Sweeping Report for 2012

Sector 32	EPA Category	Drainage	Street Miles	Curb/Pickup Miles	Total Pick up (Cubic Yards)	Unit Pick up (Cubic Yds/Mile)	Completeness (%)
	Arterial	OC		0.00			
		CG		0.00			
	Residential	OC					
		CG			13.78		
		Mixed			151.38		100
Totals					151.38		100

Sector 33	EPA Category	Drainage	Street Miles	Curb/Pickup Miles	Total Pick up (Cubic Yards)	Unit Pick up (Cubic Yds/Mile)	Completeness (%)
	Arterial	OC		0.00			
		CG			3.44	3.38	0.98
	Residential	OC					
		CG			10.79		
		Mixed			80		100
Totals					83.38		100

Sector 34	EPA Category	Drainage	Street Miles	Curb/Pickup Miles	Total Pick up (Cubic Yards)	Unit Pick up (Cubic Yds/Mile)	Completeness (%)
	Arterial	OC		0.00			
		CG			4.98	15.75	3.16
	Residential	OC					
		CG			13.09		
		Mixed			No data reported		0
Totals					15.75		

Sector 35	EPA Category	Drainage	Street Miles	Curb/Pickup Miles	Total Pick up (Cubic Yards)	Unit Pick up (Cubic Yds/Mile)	Completeness (%)
	Arterial	OC		0.00			
		CG			4.00	7.88	1.97
	Residential	OC					
		CG			12.82		
		Mixed			No data reported		0
Totals					7.88		

Sector 36	EPA Category	Drainage	Street Miles	Curb/Pickup Miles	Total Pick up (Cubic Yards)	Unit Pick up (Cubic Yds/Mile)	Completeness (%)
	Arterial	OC		0.00			
		CG			3.90	3.05	0.78
	Residential	OC					
		CG			3.30		
		Mixed			26		100
Totals					29.05		100

Sector 37	EPA Category	Drainage	Street Miles	Curb/Pickup Miles	Total Pick up (Cubic Yards)	Unit Pick up (Cubic Yds/Mile)	Completeness (%)
	Arterial	OC		0.00			
		CG			0.99	4.5	4.55
	Residential	OC					
		CG			16.07		
		Mixed			130		100
Totals					134.5		100

Sector 38	EPA Category	Drainage	Street Miles	Curb/Pickup Miles	Total Pick up (Cubic Yards)	Unit Pick up (Cubic Yds/Mile)	Completeness (%)
	Arterial	OC		0.00			
		CG			3.79	7.88	2.08
	Residential	OC					
		CG			21.37		
		Mixed			No data reported		0
Totals					7.88		

Sector 39	EPA Category	Drainage	Street Miles	Curb/Pickup Miles	Total Pick up (Cubic Yards)	Unit Pick up (Cubic Yds/Mile)	Completeness (%)
	Arterial	OC		0.00			
		CG			0.00		
	Residential	OC					
		CG			12.82		
		Mixed			15		100
Totals					15		100

Anchorage MS4 Street Sweeping Report for 2012

Sector 40	EPA Category	Drainage	Street Miles	Curb/Pickup Miles	Total Pick up (Cubic Yards)	Unit Pick up (Cubic Yds/Mile)	Completeness (%)
	Arterial	OC		0.00			
		CG		3.00	9	3.00	100
	Residential	OC					
		CG			10.06		
		Mixed			98		100
Totals					107		100

Sector 41	EPA Category	Drainage	Street Miles	Curb/Pickup Miles	Total Pick up (Cubic Yards)	Unit Pick up (Cubic Yds/Mile)	Completeness (%)
	Arterial	OC		0.00			
		CG			0.00		
	Residential	OC					
		CG			15.38		
		Mixed			26.5		100
Totals					26.5		100

Sector 42	EPA Category	Drainage	Street Miles	Curb/Pickup Miles	Total Pick up (Cubic Yards)	Unit Pick up (Cubic Yds/Mile)	Completeness (%)
	Arterial	OC		0.00			
		CG			0.00		
	Residential	OC					
		CG			13.15		
		Mixed			No data reported		0
Totals					No data reported		0

Sector 43	EPA Category	Drainage	Street Miles	Curb/Pickup Miles	Total Pick up (Cubic Yards)	Unit Pick up (Cubic Yds/Mile)	Completeness (%)
	Arterial	OC		0.00			
		CG			0.00		
	Residential	OC					
		CG			12.82		
		Mixed			No data reported		0
Totals					No data reported		0

Sector 44	EPA Category	Drainage	Street Miles	Curb/Pickup Miles	Total Pick up (Cubic Yards)	Unit Pick up (Cubic Yds/Mile)	Completeness (%)
	Arterial	OC		0.00			
		CG			1.41	No data reported	
	Residential	OC					
		CG			27.28		
		Mixed			28.25		100
Totals					28.25		100

Sector 45	EPA Category	Drainage	Street Miles	Curb/Pickup Miles	Total Pick up (Cubic Yards)	Unit Pick up (Cubic Yds/Mile)	Completeness (%)
	Arterial	OC		0.00			
		CG			3.00	4.55	1.52
	Residential	OC					100
		CG			6.67		
		Mixed			8.5		100
Totals					13.05		100

Sector 46	EPA Category	Drainage	Street Miles	Curb/Pickup Miles	Total Pick up (Cubic Yards)	Unit Pick up (Cubic Yds/Mile)	Completeness (%)
	Arterial	OC		0.00			
		CG			0.00		
	Residential	OC					
		CG			15.33		
		Mixed			28.8		100
Totals				15.33	28.8		100

Sector 47	EPA Category	Drainage	Street Miles	Curb/Pickup Miles	Total Pick up (Cubic Yards)	Unit Pick up (Cubic Yds/Mile)	Completeness (%)
	Arterial	OC		0.00			
		CG			0.00		
	Residential	OC					
		CG			12.89		
		Mixed			No data reported		0
Totals					No data reported		0

Anchorage MS4 Street Sweeping Report for 2012

Sector 48	EPA Category	Drainage	Street Miles	Curb/Pickup Miles	Total Pick up (Cubic Yards)	Unit Pick up (Cubic Yds/Mile)	Completeness (%)
	Arterial	OC		0.00			
		CG		5.11	4.5	0.88	100
	Residential	OC					
		CG			30.45		
		Mixed			12.13		100
Totals					16.63		100

Sector 49	EPA Category	Drainage	Street Miles	Curb/Pickup Miles	Total Pick up (Cubic Yards)	Unit Pick up (Cubic Yds/Mile)	Completeness (%)
	Arterial	OC		0.00			
		CG			0.00		
	Residential	OC					
		CG			14.91		
		Mixed			19		100
Totals					19		100

Sector 50	EPA Category	Drainage	Street Miles	Curb/Pickup Miles	Total Pick up (Cubic Yards)	Unit Pick up (Cubic Yds/Mile)	Completeness (%)
	Arterial	OC		0.00			
		CG			12.47	10.85	0.87
	Residential	OC					
		CG			17.10		
		Mixed			16.05		100
Totals					26.9		100

Sector 51	EPA Category	Drainage	Street Miles	Curb/Pickup Miles	Total Pick up (Cubic Yards)	Unit Pick up (Cubic Yds/Mile)	Completeness (%)
	Arterial	OC		0.00			
		CG			0.00		
	Residential	OC					
		CG			14.71		
		Mixed			10.6		100
Totals					10.6		100

Sector 52	EPA Category	Drainage	Street Miles	Curb/Pickup Miles	Total Pick up (Cubic Yards)	Unit Pick up (Cubic Yds/Mile)	Completeness (%)
	Arterial	OC		0.00			
		CG			1.85	18	9.72
	Residential	OC					
		CG			20.26		
		Mixed			3.13		100
Totals					21.13		100

Sector 53	EPA Category	Drainage	Street Miles	Curb/Pickup Miles	Total Pick up (Cubic Yards)	Unit Pick up (Cubic Yds/Mile)	Completeness (%)
	Arterial	OC		0.00			
		CG			0.00		
	Residential	OC					
		CG			12.25		
		Mixed			No data reported		0
Totals					No data reported		0

Sector 54	EPA Category	Drainage	Street Miles	Curb/Pickup Miles	Total Pick up (Cubic Yards)	Unit Pick up (Cubic Yds/Mile)	Completeness (%)
	Arterial	OC		0.00			
		CG			2.50	4.55	1.82
	Residential	OC					
		CG			0.74		
		Mixed			No data reported		0
Totals					4.55		

Sector 55	EPA Category	Drainage	Street Miles	Curb/Pickup Miles	Total Pick up (Cubic Yards)	Unit Pick up (Cubic Yds/Mile)	Completeness (%)
	Arterial	OC		0.00			
		CG			0.00		
	Residential	OC					
		CG			2.32		100
		Mixed			6.5		
Totals					6.5		100

Anchorage MS4 Street Sweeping Report for 2012

Sector 56	EPA Category	Drainage	Street Miles	Curb/Pickup Miles	Total Pick up (Cubic Yards)	Unit Pick up (Cubic Yds/Mile)	Completeness (%)
	Arterial	OC		0.00			
		CG		0.00			
	Residential	OC					
		CG			14.21		
		Mixed			No data reported		0
Totals					No data reported		0

Sector 57	EPA Category	Drainage	Street Miles	Curb/Pickup Miles	Total Pick up (Cubic Yards)	Unit Pick up (Cubic Yds/Mile)	Completeness (%)
	Arterial	OC		0.00			
		CG		1.48	4.55	3.07	100
	Residential	OC					
		CG			32.15		
		Mixed			6.5		100
Totals					11.05		100

Sector 58	EPA Category	Drainage	Street Miles	Curb/Pickup Miles	Total Pick up (Cubic Yards)	Unit Pick up (Cubic Yds/Mile)	Completeness (%)
	Arterial	OC		0.00			
		CG			0.00		
	Residential	OC		0.00			
		CG			1.32	15.63	11.81
		Mixed					
Totals				1.32	15.63	11.84	100

Sector 59	EPA Category	Drainage	Street Miles	Curb/Pickup Miles	Total Pick up (Cubic Yards)	Unit Pick up (Cubic Yds/Mile)	Completeness (%)
	Arterial	OC		0.00			
		CG			0.00		
	Residential	OC			1.93		100
		CG			0.00		
		Mixed					
Totals					1.93		100

Sector 60	EPA Category	Drainage	Street Miles	Curb/Pickup Miles	Total Pick up (Cubic Yards)	Unit Pick up (Cubic Yds/Mile)	Completeness (%)
	Arterial	OC					
		CG					
		Mixed			13		
	Other	OC					
		CG					
		Mixed					
Totals					13		

Anchorage MS4 Street Sweeping Report for 2012

5.2.4. ASD 2012 Detailed Sweeping Reports

Table 5-10 ASD 2012 Sweeping Report

ASD Parking Lot Sweep Summary 2012				
			2012 Sweeps	
ASD SiteCode	Site	Area (sqft)		Swept Total Qty (cyds)
335	Ravenwood Elementary School	89,075		18
220	Girdwood K-8 School	89,969		12
270	Muldoon Elementary School	92,049		14
380	Turnagain Elementary School	93,900		9
364	Susitna Elementary School	94,200		14
260	Mountain View Elementary School	95,101		16
237	Huffman Elementary School	95,228		17
340	Rogers Park Elementary School	96,305		16
450	Polaris K-12 School	97,293		11
410	Wonder Park Elementary School	97,567		6
390	Williwaw Elementary School	97,956		16
320	O'Malley Elementary School	98,189		9
118	Bear Valley Elementary School	98,474		9
330	Rabbit Creek Elementary School	99,865		13
112	Alpenglow Elementary School	102,825		10
363	Trailside Elementary School	103,834		13
130	Campbell Elementary School	104,000		9
418	Gladys Wood Elementary School	104,344		13
125	Bowman Elementary School	106,000		7
362	Spring Hill Elementary School	106,000		9
250	Lake Otis Elementary School	106,173		12
280	North Star Elementary School	106,780		9
116	Bayshore Elementary School	106,792		8
290	Northern Lights ABC School	108,974		7
248	Lake Hood Elementary School	114,600		17
300	Northwood ABC Elementary School	118,491		13
120	Birchwood ABC Elementary School	119,236		10
242	Kasuun Elementary School	119,441		7
384	Tyson Elementary School	120,690		20
400	Willow Crest Elementary School	124,285		9
345	Russian Jack Elementary School	128,685		22
170	Chugiak Elementary School	140,875		6
760, 850	West High/ Romig Middle School	176,826		34

Anchorage MS4 Street Sweeping Report for 2012

ASD Parking Lot Sweep Summary 2012				
			2012 Sweeps	
ASD SiteCode	Site	Area (sqft)		Swept Total Qty (cyds)
805	King Career Center	144,663		13
730	Gruening Middle School	150,000		24
246	Kincaid Elementary School	152,789		5
750	Mears Middle School	156,806		20
710	Clark Middle School	168,224		16
740	Hanshew Middle School	169,175		5
785	Begich Middle School	177,442		16
770	Wendler Middle School	193,293		25
780	Goldenview Middle School	201,993		17
755	Mirror Lake Middle School	203,260		20
865	Eagle River High School	275,595		16
810	Chugiak High School	325,000		28
860	South High School	340,669		26
800	Bartlett High School	412,961		28
820, 150	Dimond High/ Chinook Elementary	580,883		30
830	East High School	459,000		59
840	Service High School	473,795		34
700, 160	Central Middle/ Chugach Elementary	116,792		12
	Total	8,256,362		809
	Unit Pick Up (cyds/acre)			4.3

Anchorage MS4 Street Sweeping Report for 2012

5.2.5. 2012 Changes to Sweeping and Basis for Changes

Table 5-11 CBERRRSA 2012 Changes to Swept Streets

2012 CBERRRSA Sweep Changes										
OpArea	Change Type	NAME_ID	Street From	Street To	Sweep_ID	EPACatgry	DrngeType	St Miles	PU Miles	SweepPrac
A	1	ABERDEEN CIRCLE	MONTE ROAD	CUL DE SAC END	5854	Residential	C&G	0.05	0.10	Tan_Vac
A	1	HIDDEN HAVEN DRIVE	V.F.W. DRIVE	ALEDEN LANE	5855	Residential	OpChnlnl	0.10	0.20	Tan_Vac
A	1	LEE	EAGLE RIVER ROAD	BARONOFF AVENUE	5856	Residential	OpChnlnl	0.25	0.50	Tan_Vac
E	1	SITKA ROSE CIRCLE	ROSEBERRY PARK DRIVE	CUL DE SAC END	5852	Residential	OpChnlnl	0.10	0.00	Kick
E	1	JESSIE MAE CIRCLE	ROSEBERRY PARK DRIVE	CUL DE SAC END	5853	Residential	OpChnlnl	0.11	0.00	Kick
E	1	ICEFALL DRIVE	MT. VISTA	DRIFTWOOD BAY DRIVE	5857	Residential	C&G	0.25	0.50	Tan_Vac
E	1	MT. VISTA DRIVE	EAGLE RIVER LANE	ICE FALL DRIVE	5858	Residential	C&G	0.17	0.34	Tan_Vac
E	1	EAGLE RIVER LANE	HIGHLAND RIDGE DRIVE	MT. VISTA	5859	Residential	C&G	0.45	0.90	Tan_Vac
E	1	EAGLE RIVER LANE	PTARMIGAN BOULEVARD	EAGLE RIVER ROAD	5860	Residential	OpChnlnl	0.26	0.52	Tan_Vac
E	1	SUN EAGLE CIRCLE	WAR ADMIRAL ROAD	CUL DE SAC END	5230	Residential	C&G	0.05	0.10	Tan_Vac
E	1	MELODY	RAVEN DRIVE	EAGLE RIVER ROAD	5861	Residential	OpChnlnl	0.12	0.24	Tan_Vac
B	2	SEE SAW AVENUE	HUSKY STREET	END OF BLM LOT 141	5410	Residential	OpChnlnl	0.06	0.12	Kick
D	2	BERNARD DRIVE	ELENORA LANE	19386 & 19381	5676	Residential	OpChnlnl	0.16	0.33	Kick
E	2	BLYTHE WAY	MARIAH DRIVE	4444 BLYTHE WAY	5721	Residential	OpChnlnl	0.06	0.12	Kick
C	3	EKLUTNA BRIDGE			5502	Residential	OpChnlnl	0.01	0.02	Kick
A	4	ARTILLERY ROAD 2	STORAGE BIN FRONTAGE	MAUSEL STREET	5267	Residential	C&G	0.12	0.24	Tan_Vac
A	4	BRIDGER CIRCLE	BRIDGER PLACE	END OF CUL DE SAC	5020	Residential	C&G	0.02	0.04	Tan_Vac
A	4	ARTILLERY ROAD 1	CROSS DRIVE	CHUGIAK DRIVE	5266	Residential	OpChnlnl	0.05	0.10	Tan_Vac
A	4	CHUGIAK DRIVE 1	ARTILLERY ROAD	BROOKS ROAD	5280	Residential	OpChnlnl	0.13	0.25	Tan_Vac
A	4	BROOKS ROAD	OLD GLENN HIGHWAY	CHUGIAK DRIVE	5273	Residential	OpChnlnl	0.17	0.34	Tan_Vac
A	4	CROSS DRIVE	ARTILLERY ROAD	BROOKS ROAD	5282	Residential	OpChnlnl	0.12	0.24	Tan_Vac
A	4	LAKE STREET	FARM AVENUE	M.O.A. PARK	5309	Residential	OpChnlnl	0.10	0.20	Tan_Vac
A	4	CENTER STREET	FARM AVENUE	M.O.A. PARK	5277	Residential	OpChnlnl	0.12	0.24	Tan_Vac
A	4	END STREET	FARM AVENUE	M.O.A. PARK	5292	Residential	OpChnlnl	0.12	0.24	Tan_Vac
A	4	SCHROEDER DRIVE	OLD GLENN HIGHWAY	IRIS WAY	5332	Residential	OpChnlnl	0.20	0.40	Tan_Vac
A	4	IRIS WAY	DAVIS STREET	RIDDELL CIRCLE	5303	Residential	OpChnlnl	0.44	0.88	Tan_Vac
A	4	ELEONORA STREET	OLD GLENN HIGHWAY	16416 ELEONORA STREET	5291	Residential	OpChnlnl	0.40	0.80	Tan_Vac
A	4	MERCY DRIVE	OLD GLENN HIGHWAY	LOT 21, BLK 3, DEBORA #2	5317	Residential	OpChnlnl	0.35	0.70	Tan_Vac
A	4	MARCUS STREET	IRIS WAY	END STREET	5313	Residential	OpChnlnl	0.24	0.48	Tan_Vac
A	4	CARLA STREET	IRIS WAY	END STREET	5275	Residential	OpChnlnl	0.19	0.38	Tan_Vac
A	4	DAVIS STREET	IRIS WAY	END STREET	5284	Residential	OpChnlnl	0.18	0.36	Tan_Vac
A	4	TANDY PLACE (FORMERLY END STREET)	DAVIS STREET	MARCUS STREET	5343	Residential	OpChnlnl	0.17	0.34	Tan_Vac
A	4	BOWEN CIRCLE	OLD GLENN HIGHWAY	END OF CUL DE SAC	5271	Residential	OpChnlnl	0.13	0.27	Tan_Vac
A	4	HORSESHOE DRIVE	N. EAGLE RIVER LOOP	N. EAGLE RIVER LOOP	5300	Residential	OpChnlnl	0.21	0.42	Tan_Vac
A	4	SPRING BROOK DRIVE	N. EAGLE RIVER LOOP	S. JUANITA LOOP	5337	Residential	OpChnlnl	0.75	1.50	Tan_Vac
A	4	FATH CIRCLE	SPRINGBROOK DRIVE	END OF CUL DE SAC	5293	Residential	OpChnlnl	0.03	0.06	Tan_Vac
A	4	JUANITA LOOP SOUTH	OLD GLENN HIGHWAY	JUANITA LOOP NORTH	5306	Residential	OpChnlnl	0.44	0.88	Tan_Vac
A	4	JUANITA LOOP NORTH	OLD GLENN HIGHWAY	BEAUJOLAIS DRIVE	5305	Residential	OpChnlnl	0.50	1.00	Tan_Vac
A	4	ALICE LOOP	SANTA MARIA DRIVE	SANTA MARIA DRIVE	5265	Residential	OpChnlnl	0.26	0.52	Tan_Vac
A	4	SANTA MARIA DRIVE	OLD GLENN HIGHWAY	SPRINGBROOK DRIVE	5331	Residential	OpChnlnl	0.45	0.90	Tan_Vac
A	4	PRINCE OF PEACE DRIVE W.	SANTA MARIA DRIVE	PRINCE OF PEACE DRIVE E.	5326	Residential	OpChnlnl	0.22	0.44	Tan_Vac
A	4	CHARITY CIRCLE	W. PRINCE OF PEACE DRIVE	END OF CUL DE SAC	5278	Residential	OpChnlnl	0.05	0.10	Tan_Vac
A	4	CURTIS CIRCLE	E & W PRINCE OF PEACE DR.	END OF CUL DE SAC	5283	Residential	OpChnlnl	0.02	0.04	Tan_Vac
A	4	PRINCE OF PEACE DRIVE E.	SANTA MARIA DRIVE	PRINCE OF PEACE DRIVE W.	5325	Residential	OpChnlnl	0.31	0.62	Tan_Vac
A	4	CHARITY LANE	W. PRINCE OF PEACE DRIVE	E. PRINCE OF PEACE DRIVE	5279	Residential	OpChnlnl	0.12	0.24	Tan_Vac
A	4	HOPE CIRCLE	SANTA MARIA DRIVE	END OF CUL DE SAC	5299	Residential	OpChnlnl	0.05	0.10	Tan_Vac
A	4	TERRACE HILLS DRIVE	N. EAGLE RIVER LOOP	SANCTUARY DRIVE	5346	Residential	OpChnlnl	0.20	0.40	Tan_Vac
A	4	TEDROW DRIVE	FIREBALL STREET	N. EAGLE RIVER LOOP	5345	Residential	OpChnlnl	0.43	0.86	Tan_Vac
A	4	TEDROW CIRCLE	TEDROW DRIVE	END OF CUL DE SAC	5344	Residential	OpChnlnl	0.04	0.08	Tan_Vac
A	4	LACEY DRIVE	FIREBALL STREET	TERRACE HILLS DRIVE	5308	Residential	OpChnlnl	0.27	0.54	Tan_Vac
A	4	FIREBALL STREET	KATIUM DRIVE	LACEY DRIVE	5295	Residential	OpChnlnl	0.26	0.52	Tan_Vac
A	4	FIRE HOUSE LANE	EAGLE RIVER ROAD	OLD EAGLE RIVER ROAD	5294	Residential	OpChnlnl	0.11	0.22	Tan_Vac
A	4	SEABOLT PLACE	FIRE HOUSE LANE	16801 SEABOLT LANE	5333	Residential	OpChnlnl	0.08	0.16	Tan_Vac
A	4	LAZY LANE	CORONADO ROAD	N. EAGLE RIVER LOOP	5311	Residential	OpChnlnl	-	0.48	Tan_Vac
A	4	HANSON DRIVE	OLD GLENN HIGHWAY	AURORA STREET	5297	Residential	OpChnlnl	-	0.52	Tan_Vac
A	4	EASY STREET	OLD GLENN HIGHWAY	AURORA STREET	5289	Residential	OpChnlnl	-	0.58	Tan_Vac
A	4	PARK PLACE STREET	OLD GLENN HIGHWAY	AURORA ROAD	5323	Residential	OpChnlnl	-	0.62	Tan_Vac
A	4	CORONADO ROAD	OLD GLENN HIGHWAY	ECHO STREET	5281	Residential	OpChnlnl	-	1.00	Tan_Vac
A	4	SUNNY CIRCLE, LOWER	CORONADO ROAD	UPPER SUNNY CIRCLE	5340	Residential	OpChnlnl	0.25	0.50	Tan_Vac
A	4	SUNNY CIRCLE, UPPER	CORONADO ROAD	MONTE ROAD	5341	Residential	OpChnlnl	0.26	0.52	Tan_Vac
A	4	AURORA STREET	MONTE ROAD	N. EAGLE RIVER LOOP	5268	Residential	OpChnlnl	0.43	0.86	Tan_Vac
A	4	BOREALIS STREET	MONTE ROAD	CORONADO ROAD	5270	Residential	OpChnlnl	0.24	0.48	Tan_Vac
A	4	CELESTIAL STREET	MONTE ROAD	N. EAGLE RIVER LOOP	5276	Residential	OpChnlnl	0.39	0.78	Tan_Vac
A	4	ADAMS LANE	CELESTIAL STREET	FIREBALL STREET	5263	Residential	OpChnlnl	0.17	0.34	Tan_Vac
A	4	ECHO STREET	MONTE ROAD	CORONADO ROAD	5290	Residential	OpChnlnl	0.24	0.48	Tan_Vac
A	4	EAGLE RIVER LOOP SPUR	CORONADO ROAD	N. EAGLE RIVER LOOP	5288	Residential	OpChnlnl	0.08	0.16	Tan_Vac
A	4	DAWN STREET	ADAMS LANE	N. EAGLE RIVER LOOP	5285	Residential	OpChnlnl	0.40	0.80	Tan_Vac
A	4	V.F.W. ROAD	EAGLE RIVER ROAD	HIDDEN HAVEN	5350	Residential	C&G	0.45	0.90	Tan_Vac
A	4	ALEDEN LANE	HIDDEN HAVEN DRIVE	END	5264	Residential	OpChnlnl	0.09	0.18	Tan_Vac
A	4	GENORA STREET	EAGLE RIVER ROAD	BARONOFF AVENUE	5755	Residential	OpChnlnl	0.25	0.50	Tan_Vac
A	4	BIG HORN CIRCLE	GENORA STREET	CUL DE SAC END	5718	Residential	OpChnlnl	0.04	0.08	Tan_Vac
A	4	FOOTHILL AVENUE	OLD EAGLE RIVER ROAD	GENORA STREET	5754	Residential	OpChnlnl	0.31	0.62	Tan_Vac
A	4	WILLIS DRIVE	FOOTHILL AVENUE	10320 WILLIS DRIVE	5837	Residential	OpChnlnl	0.08	0.17	Tan_Vac
A	4	YOUNG DRIVE	OLD EAGLE RIVER ROAD	END	5840	Residential	OpChnlnl	0.03	0.06	Tan_Vac
A	4	BARONOFF AVENUE 2	OLD EAGLE RIVER ROAD	CUL DE SAC END	5714	Residential	OpChnlnl	0.09	0.18	Tan_Vac
A	4	BEAR PAW CIRCLE	GENORA STREET	CUL DE SAC END	5715	Residential	OpChnlnl	0.04	0.08	Tan_Vac

Anchorage MS4 Street Sweeping Report for 2012

A	4	BAFFIN STREET	EAGLE RIVER ROAD	BARONOFF AVENUE	5713	Residential	OpnChnml	0.25	0.50	Tan_Vac
A	4	CHAIN OF ROCK STREET 2	EAGLE RIVER ROAD	BARONOFF AVENUE	5725	Residential	OpnChnml	0.25	0.50	Tan_Vac
A	4	WILDWOOD STREET	EAGLE RIVER ROAD	BARONOFF AVENUE	5836	Residential	OpnChnml	0.25	0.50	Tan_Vac
A	4	CARIBOU STREET	EAGLE RIVER ROAD	BARONOFF AVENUE	5723	Residential	OpnChnml	0.29	0.58	Tan_Vac
A	4	CHANDALAR STREET	EAGLE RIVER ROAD	BARONOFF AVENUE	5727	Residential	OpnChnml	0.25	0.50	Tan_Vac
A	4	COLVILLE STREET 2	EAGLE RIVER ROAD	MEADOW CREEK DRIVE	5739	Residential	OpnChnml	0.50	1.00	Tan_Vac
A	4	CHICKALOON STREET	EAGLE RIVER ROAD	BARONOFF AVENUE	5729	Residential	OpnChnml	0.25	0.50	Tan_Vac
C	4	REESE ROAD	SAMPSON DRIVE	MILLER ROAD	5622	Residential	OpnChnml	0.45	0.90	Tan_Vac
C	4	SUNNYSIDE DRIVE	LAKE HILL DRIVE	SAMPSON DRIVE	5654	Residential	OpnChnml	0.30	0.60	Tan_Vac
C	4	OBBERG ROAD	OLD GLENN HIGHWAY	DEER PARK DRIVE	5596	Residential	OpnChnml	1.10	2.20	Tan_Vac
C	4	VOYLES BOULEVARD	OLD GLENN HIGHWAY	SHELTERING SPRUCE AVENUE	5667	Residential	OpnChnml	0.85	1.70	Tan_Vac
C	4	FOUR WHEEL DRIVE	OLD GLENN HIGHWAY	HOMESTEAD ROAD	5512	Residential	OpnChnml	0.22	0.44	Tan_Vac
C	4	HOMESTEAD RD 2 (@ OBERG W.	OBERG ROAD	LOT 24, BETH HEIGHTS SUB.	5541	Residential	OpnChnml	0.05	0.10	Tan_Vac
C	4	OLD GLENN HIGHWAY 1	FOUR WHEEL DRIVE	NORTHSHORE DRIVE (NOW CHAMBERS LANE TO DARN DRIVE	5597	Residential	C&G	0.37	0.74	Tan_Vac
C	4	EASTSIDE DRIVE 1	SKI ROAD	HOMESTEAD ROAD	5499	Residential	OpnChnml	0.42	0.84	Tan_Vac
C	4	HOMESTEAD ROAD 4	EASTSIDE DRIVE	SCHAFF DRIVE	5543	Residential	OpnChnml	1.41	2.82	Tan_Vac
C	4	MOUNT EKLUINA DRIVE 2	ANTHEM PLACE	SCHAFF DRIVE		Residential	OpnChnml	0.08	0.16	Tan_Vac
C	4	SCHAFF DRIVE	HOMESTEAD ROAD	MOUNT EKLUINA DRIVE	5631	Residential	Mixed	0.45	0.90	Tan_Vac
C	4	JESSE LEE COURT	MONRON DRIVE	SCHAFF DRIVE	5551	Residential	OpnChnml	0.13	0.26	Tan_Vac
C	4	MONRON STREET 1	CHUGIAK STREET	JESSE LEE COURT	5583	Residential	OpnChnml	0.06	0.12	Tan_Vac
C	4	CHUGIAK DRIVE 2	SETTLERS DRIVE	MONRON DRIVE	5472	Residential	OpnChnml	0.30	0.60	Tan_Vac
C	4	SETTLERS DRIVE	HOMESTEAD ROAD	LOT 9A	5633	Residential	OpnChnml	0.41	0.82	Tan_Vac
C	4	OLD GLENN HWY	T-BIRD FALLS OFF RAMP	EKLUTNA OVERPASS		Residential	OpnChnml	0.90	1.80	Tan_Vac
E	4	PTARIGAN BLVD	EAGLE RIVER LANE	RAVEN DRIVE		Residential	OpnChnml	0.21	0.41	Tan_Vac
E	4	RAVEN DRIVE	PTARIGAN	EAGLE RIVER LANE		Residential	OpnChnml	0.26	0.53	Tan_Vac
E	4	SUN BEAU DRIVE	EAGLE RIVER LOOP SOUTH	WAR ADMIRAL ROAD	5817	Residential	OpnChnml	0.24	0.48	Tan_Vac
E	4	STEEPLE DRIVE	EAGLE RIVER LANE	TR 6A HIGHLAND TERRACE #4	5816	Residential	OpnChnml	1.10	2.20	Tan_Vac
E	4	TWENTY GRAND ROAD	SUN BEAU DRIVE	CRESTVIEW LANE	5825	Residential	OpnChnml	0.44	0.88	Tan_Vac
E	4	WHIRLAWAY ROAD	SUN BEAU DRIVE	CRESTVIEW LANE	5833	Residential	OpnChnml	0.44	0.88	Tan_Vac
E	4	MAN O WAR ROAD	E. EAGLE RIVER LOOP	CRESTVIEW LANE	5782	Residential	OpnChnml	0.70	1.40	Tan_Vac
E	4	CORRIE WAY	WAR ADMIRAL ROAD	CUL DE SAC END	5740	Residential	OpnChnml	0.25	0.50	Tan_Vac
E	4	CICUTTA WAY	CORRIE WAY	CUL DE SAC END	5732	Residential	OpnChnml	0.14	0.28	Tan_Vac
E	4	HIGH BLUFF DRIVE	CITATION ROAD	19545 HIGH BLUFF DRIVE	5760	Residential	OpnChnml	0.72	1.44	Tan_Vac
E	4	CITATION ROAD	E. EAGLE RIVER LOOP	EAGLE RIVER LANE	5733	Residential	OpnChnml	0.96	1.92	Tan_Vac
E	4	LEDOUX LANE	EAGLE RIVER ROAD	CITATION ROAD	5770	Residential	OpnChnml	0.25	0.50	Tan_Vac
E	4	SECOND STREET	EAGLE RIVER LOOP SOUTH	EAGLE RIVER LANE	5813	Residential	OpnChnml	0.97	1.94	Tan_Vac
E	4	ALLEY (CHURCH)	E. EAGLE RIVER LOOP	LEDOUX LANE	5710	Residential	OpnChnml	0.08	0.16	Tan_Vac
E	4	FIRST STREET	LEDOUX LANE	EAGLE RIVER LANE	5753	Residential	OpnChnml	0.86	1.72	Tan_Vac
E	4	BIRCH LANE 2	EAGLE RIVER ROAD	CITATION ROAD	5719	Residential	OpnChnml	0.18	0.36	Tan_Vac
E	4	HILLCREST LANE	EAGLE RIVER ROAD	THIRD STREET	5761	Residential	OpnChnml	0.22	0.43	Tan_Vac
E	4	DAVID AVENUE	EAGLE RIVER LANE	PREUSS LANE	5743	Residential	OpnChnml	0.45	0.90	Tan_Vac
E	4	PREUSS LANE	EAGLE RIVER ROAD	LUCAS AVENUE	5801	Residential	OpnChnml	0.21	0.42	Tan_Vac
E	4	LUCAS AVENUE	EAGLE RIVER LANE	LOT 10 BLK 11 PREUSS SUB.	5779	Residential	OpnChnml	0.48	0.96	Tan_Vac
E	4	GEORGE PLACE	DAVID AVENUE	LUCAS AVENUE	5756	Residential	OpnChnml	0.12	0.24	Tan_Vac
E	4	LOUIS PLACE	DAVID AVENUE	LUCAS AVENUE	5775	Residential	OpnChnml	0.12	0.24	Tan_Vac
E	4	RONALD PLACE	DAVID AVENUE	LUCAS AVENUE	5808	Residential	OpnChnml	0.12	0.24	Tan_Vac
E	4	DONALD PLACE	DAVID AVENUE	LUCAS AVENUE	5747	Residential	OpnChnml	0.12	0.24	Tan_Vac
E	4	THIRD STREET	LEDOUX LANE	EAGLE RIVER LANE	5822	Residential	OpnChnml	0.88	1.76	Tan_Vac
A	5	MARKET STREET	CORONADO ROAD	OLD GLENN HIGHWAY	5040	Residential	OpnChnml	0.13	0.25	Tan_Vac
D	5	YELLOWSTONE DRIVE/CIRCLE	YELLOWSTONE CIRCLE	SHASTA CIRCLE	5161	Residential	OpnChnml	0.67	1.33	Tan_Vac
D	5	ACADIA DRIVE	YELLOWSTONE DRIVE	LASSEN STREET	5162	Residential	OpnChnml	0.17	0.33	Tan_Vac
D	5	CARMEL CIRCLE	ACADIA DRIVE	CUL DE SAC END	5163	Residential	OpnChnml	0.04	0.09	Tan_Vac
D	5	LASSEN CIRCLE	ACADIA DRIVE	YELLOWSTONE	5164	Residential	OpnChnml	0.06	0.12	Tan_Vac
D	5	LASSEN STREET	YELLOWSTONE DRIVE	CUL DE SAC END	5165	Residential	OpnChnml	0.25	0.50	Tan_Vac
D	5	INYO CIRCLE	YELLOWSTONE DRIVE	CUL DE SAC END	5166	Residential	OpnChnml	0.07	0.13	Tan_Vac
D	5	SONORA CIRCLE	YELLOWSTONE DRIVE	CUL DE SAC END	5167	Residential	OpnChnml	0.07	0.13	Tan_Vac
D	5	COLUSA CIRCLE	YELLOWSTONE DRIVE	CUL DE SAC END	5168	Residential	OpnChnml	0.05	0.10	Tan_Vac
D	5	MENDOCINO CIRCLE	YELLOWSTONE DRIVE	CUL DE SAC END	5169	Residential	OpnChnml	0.04	0.08	Tan_Vac
D	5	PLUMAS CIRCLE	YELLOWSTONE DRIVE	CUL DE SAC END	5170	Residential	OpnChnml	0.04	0.08	Tan_Vac
D	5	SHASTA CIRCLE	YELLOWSTONE DRIVE	CUL DE SAC END	5171	Residential	OpnChnml	0.25	0.50	Tan_Vac
B	6	TENADA AVENUE 3	UPPER BOWERY LANE	EAST BLM LOT 142	5425	Residential	OpnChnml	0.06	0.12	Kick
B	6	TENADA AVENUE 4	SCENIC DRIVE	WEST BLM LOT 189	5426	Residential	OpnChnml	0.06	0.13	Kick
B	6	CYRUS STREET 1	MCKINLEY VIEW AVENUE	END OF BLM LOT 103	5373	Residential	OpnChnml	0.05	0.10	Kick
C	6	NORTHWOODS DRIVE	OBERG ROAD	NORTHWOODS CIRCLE	5125	Residential	OpnChnml	0.48	0.95	Tan_Vac
C	6	DEER PARK DRIVE	BLACKTAIL CIRCLE	SAMBAR	5410	Residential	OpnChnml	0.12	0.24	Kick
D	6	WEST RIVER DRIVE 2	LOT 10, BLK 4	NORTH END	5706	Residential	OpnChnml	0.77	1.55	Kick

Change Type Key

- 1=Road segment added to 2012 sweep list, swept according to EPA category during 2012.
- 2=Road segments have a gravel surface type and are infeasible for sweeping (see Section 2.1)
- 3=Road segments are now a pedestrian walkway and no longer open to traffic
- 4=Road segments added to the Pick Up Broom sweep list (removed from the Kick Broom list)
- 5=Road segments have been changed to a different Operational Area for 2012 (new OpArea listed on table)
- 6=Road segments deleted from sweep list for 2012 (suspected duplicate segment already accounted for)

Anchorage MS4 Street Sweeping Report for 2012

Table 5-12 DOT 2012 Changes to Swept Streets

2012 DOT Sweep Changes										
Sector	Change Type	NAME_ID	Street From	Street To	Sweep_ID	EPACatgry	DrngeType	St Miles	PU Miles	SweepPrac
A	1	Birchtree Street	Birchwood Loop	Birchwood Elementary School	7039	Residential	OpnChnnl	0.49	0.98	Tan_Vac
A	1	Birchwood Spur Road	Birchwood Loop	Stoltze Drive	7004	Residential	OpnChnnl	6.09	12.18	Tan_Vac
A	1	East 36th Avenue	Patterson Street	Muldoon Road	1668	Residential	OpnChnnl	0.51	1.01	Tan_Vac
A	1	Old Seward Highway	36th Avenue	33rd Avenue	1396	Arterial	Mixed	0.19	0.38	Tan_Vac
B	1	Birch Road	Huffman Road	Abbott Road	7041	Residential	OpnChnnl	1.95	3.90	Kick_Vac
B	1	Old Rabbit Creek Road	Rabbit Creek Road	Rabbit Creek Road	7043	Residential	OpnChnnl	1.03	2.05	Kick_Vac
A	2	Glenn Hwy Ramps and Eklutna Village Road	Indian Chief Court Chugiak	Old Glenn Highway Chugiak	NA	NA				
A	2	Glenn Hwy Ramps and Lake Hill Drive	Old Glenn Highway Chugiak	Settlers Drive Chugiak	NA	NA				
A	2	Glenn Hwy Ramps and Old Glenn Highway	Glenn NB off Mirror Lake Ramp Chugiak	Glenn NB on Paradis Ramp Chugiak	NA	NA				
A	2	Glenn Hwy Ramps and Paradis Lane	Glenn SB off Paradis Ramp Chugiak	Old Glenn Highway Chugiak	NA	NA				
A	2	Glenn Hwy Ramps at South Birchwood	All	All	NA	NA				
A	2	Glenn Hwy Ramps at Thunderbird Chugiak	All	All	NA	NA				
A	2	Glenn Hwy Ramps and Voyles Blvd	Bill Stephens Drive Chugiak	Old Glenn Highway Chugiak	NA	NA				
A	3	Old Glenn Highway Chugiak	Glenn NB off Thunderbird Ramp Chugiak	Eklutna Village Road Chugiak	5842	Residential				
B	4	Dowling Road	Old Seward Highway	Franklin Drive	4055	Residential	Mixed	0.42	0.84	Tan_Vac
B	4	Brayton Drive	Tudor Road	Dowling Road	4048	Residential	OpnChnnl	0.99	1.98	Tan_Vac
B	4	Homer Drive	Tudor Road	Dowling Road	4061	Residential	OpnChnnl	1.00	2.00	Tan_Vac
B	4	Victor Road	West 100th Ave	Diamond Blvd	4091	Residential	Mixed	0.51	1.02	Tan_Vac

Change Type Key

- 1=Road segment added to 2012 sweep list, swept according to EPA category during 2012.
- 2=Road segment part of open channel, high speed thruway route and removed from regular sweeping (see Section 2.1).
- 3=Road segment swept by CBERRSA und
- 4=Road segment under construction, street sweeping performed under separate construction permit.