



MUNICIPALITY OF ANCHORAGE
PARKS AND RECREATION COMMISSION



**MINUTES OF THE
REGULAR MEETING**

May 12, 2016

I. Call to Order

The May 12, 2016 regular meeting of the Anchorage Parks and Recreation Commission was called to order by Chair Jon Dyson at 6:00 p.m., at Spenard Recreation Center.

II. Roll Call

Roll call was taken by Josh Durand, Park Superintendent.

Commissioners present:

Commissioner Jon Dyson
Commissioner Michael McCambridge
Commissioner Richard Mystrom
Commissioner James Winchester
Commissioner Alison Smith

Commissioners absent/excused:

Commissioner James Balamaci
Commissioner Peter Murphy
Commissioner Harlow Robinson
Commissioner Levi Robinson

A quorum was present.

Staff present:

Josh Durand
Tom Korosei
Maeve Nevins
Diana Cramer

III. Consent Agenda

A. Agenda

Josh Durand, Park Superintendent, requested that action items on the Agenda be reordered to move Item D, PRC 16-17 Bike Anchorage Totem Counter before Item C, PRC 16-16 Anchorage Trails Wayfinding. Mr. Durand also stated that the Information Item, PRC 16-18 Delaney Park Tennis Courts, is being postponed to a later meeting and requested it be removed from the Agenda.

A motion to amend the Agenda was duly made by Commissioner Richard Mystrom, seconded by Commissioner Michael McCambridge, and unanimously approved.

Upon motion duly made by Commissioner Alison Smith and seconded by Commissioner Richard Mystrom, the amended Agenda for the May 12, 2016 meeting of the Parks and Recreation Commission was unanimously approved.

B. Minutes of Previous Meeting

Upon motion duly made by Commissioner Alison Smith and seconded by Commissioner Richard Mystrom, the Minutes of the April 14, 2016 meeting of the Parks and Recreation Commission were unanimously approved.

IV. Director's Comments

Josh Durand spoke on behalf of Director Rodda, stating that the Mayor's Office is looking closely at commission and board attendance at meetings and Mr. Rodda wished that to be brought to the commissioners' attention.

V. Appearance Requests

There were no appearance requests for non-agenda items.

VI. Anchorage Park Foundation

Beth Nordlund reported on the activities of the Anchorage Park Foundation.

There is a Schools on Trails event on Friday, May 13, which is a ribbon cutting for the new trail at Earthquake Park at 1:30 with some third graders from Turnagain Elementary. There are new signs installed which are about the history of the 1964 earthquake.

There is an Arbor Day event on May 16th, with Denali Elementary School students, at the Delaney Park Strip from 10:00-11:30 a.m., at 10th & M.

A fundraiser for the Anchorage Park Foundation will be held on June 16 at former Governor Bill Sheffield's home. More information will be provided to you soon.

VII. Action Items

A. PRC 16-14 GCI Tower at Kincaid Park

(PRC Resolution 2016-12)

Presented by: Tom Korosei, Park Planner
Cindy Coughlin and Travis Drake, GCI
Trygve Erickson, MOA Communications Officer

Presentation

GCI has applied for permission to install a tower that will use approximately 1600 square feet of park land for cellular communications equipment at Kincaid Park, in order to provide improved wireless communication service in the park. A "mono-pine" tower will be installed about 600 feet south of the Kincaid Chalet and 110 feet east of the south soccer stadium seating area. The elevation of land at the base of the tower is about 300 feet, which is 80 feet above the elevation of the Kincaid Chalet. GCI provided information that included photo-simulations of the tower configuration, fencing and site plan with proposed ground equipment and landscaping. Maps were provided to compare the difference in the range of cellular service with and without the tower. GCI has been working with Parks and Recreation and other Municipal departments including Real Estate Department, Public Works/Communications & Electronics, and the Municipal Attorney's Office on this project. At this time it is expected that GCI will be permitted under a one-year, revocable permit, with easements granted for portions of the underground utilities where they are outside of existing easements or rights-of-way. The proposed tower will replace existing antennas and temporary "cell on wheels" located in the Park.

The Sand Lake Community councils supports this project. GCI also held a public meeting at Kincaid Outdoor Center on May 11 to obtain additional public comment, which was very supportive.

Parks and Recreation Recommendation

Parks and Recreation supports service upgrades that will improve emergency communications and believes the proposed structures and activities will not significantly interfere with park activities. The selected design of the tower is intended to be the least visually intrusive of the options proposed and the location of the tower prominent enough to provide the best coverage. The tower and equipment will be screened by fencing. Originally trees and shrubs were to be required, but as no irrigation exists at

that location, that requirement has been removed. Indigenous trees and plants will be planted at a later date.

Parks and Recreation requests that the Commission approve the proposed resolution, subject to the following conditions:

1. The Permittee shall minimize cutting of trees and other site disturbance, and shall install additional planting and/or other screening to mitigate visual and site impacts if determined appropriate and approved by the Parks and Recreation Department.

2. The Permittee shall use the least obtrusive tower design, or an aesthetically pleasing design to complement the park environment. The Parks Dept. believes that the least obtrusive tower design as presented would be the simulated "pine tree."

3. The Permittee shall agree to remove equipment upon reasonable notice and restore the site to the Department's satisfaction, and shall agree to other reasonable terms in the interest of the Municipality.

4. The Permittee shall pay appropriate fees, including administrative costs, fair market value, use fee and/or other compensation on basis determined by the Municipality.

5. The Permittee shall be responsible for obtaining any and all other required federal, state, and local permits and approvals for the proposed project.

Public Appearance Requests

There was one public appearance request.

Cathy Gleason, speaking for herself, generally supports this project. However, she feels that tree and shrub planting should be required to be done by GCI in addition to the fencing to provide a more aesthetically pleasing appearance; that lack of water onsite is just an excuse. She is also concerned that 1600 square feet is too large a footprint for this structure.

Josh Durand, Park Superintendent, responded to Ms. Gleason's concerns stating that he believes that landscaping can be done after the installation has been in place in order to make create a more thoughtful landscaping design that could include indigenous birch and spruce trees, and native grasses.

Trygve Anderson, MOA Communications Officer, also responded to Ms. Gleason on behalf of the Municipal Administration, stating that if trees are planted, the Municipality is required to provide water or irrigation for it. He also stated that the 1600 square foot

area is necessary in order to accommodate the equipment for three separate cellular service providers.

Discussion and Resolution

Questions by the Commissioners were answered by Parks and Recreation staff, GCI employees, and Trygve Anderson, with discussion centering on the construction process, installation of the fiber optic cables, tree planting, and the details of the lease agreement.

Commissioner Alison Smith expressed her concerns about the temporary nature of the lease agreement, stating that GCI is making a huge investment on something that can be cancelled in one year with no promise of renewal. She believes the city is at risk for a lawsuit if it chooses not to renew the lease. She is also not convinced that the lease allows the city to have enough control on the site.

Upon motion duly made by Commissioner Richard Mystrom and seconded by Commissioner Michael McCambridge, Resolution 2016-12, Request for Revocable Use Permit for Cellular Communications Tower, Auxiliary Equipment, and Utility Related Easements at Kincaid Park, was approved as set out below. The vote was 4 in favor, with 1 abstaining (see voting record set out after resolution text).

RESOLUTION NO. 2016-12

Request for Revocable Use Permit for Cellular Communications Tower, Auxiliary Equipment, and Utility Related Easements at Kincaid Park

WHEREAS, the Anchorage Parks and Recreation Commission serves in an advisory capacity to both the Mayor and the Assembly; and

WHEREAS, the Anchorage Parks and Recreation Commission has the responsibility and duty to provide for the long-term vision of our park system by ensuring that a balance of parks, natural resources, and recreation facilities provides for the health, welfare, and safety of all residents of the Anchorage Bowl; and

WHEREAS, GCI Communications Corp. has requested permission to install cellular communications equipment including tower up to 50 feet in height above ground, and related facilities , to accommodate up to three service providers and underground utility connections that may require easements, at Kincaid Park; and

WHEREAS, the proposed equipment is intended to improve emergency service communication as well as other telecommunication capability; and

WHEREAS, the Parks and Recreation Department desires to improve safety and security for park and trail users by means which include improved telecommunications capability for first responders as well as other members of the public; and

WHEREAS, Kincaid Park is a large park offering developed recreation facilities as well as significant areas of undeveloped natural character, and additions to the park should respect the environment of the park and complement rather than diminish the visual character of the park; therefore,

BE IT RESOLVED, that the Anchorage Parks and Recreation Commission concurs with issuance of an annual, temporary, revocable permit for the proposed tower, antennas, and related equipment for up to three carriers, as well as authorizing utility easements as necessary to operate the equipment, to improve communications at Kincaid Park, in particular for emergency response, subject to the following conditions:

1. The Permittee shall minimize cutting of trees and other site disturbance, and shall install additional planting and/or other screening to mitigate visual and site impacts if determined appropriate and approved by the Parks and Recreation Department.

2. The Permittee shall use the least obtrusive tower design, or an aesthetically pleasing design approved by staff to complement the park environment. The Parks Dept. believes that the least obtrusive tower design as presented would be the simulated "pine tree."

3. The Permittee shall agree to remove equipment upon reasonable notice and restore the site to the Department's satisfaction, and shall agree to other reasonable terms in the interest of the Municipality.

4. The Permittee shall pay appropriate fees, including administrative costs, fair market value, use fee and/or other compensation on basis determined by the Municipality.

5. The Permittee shall be responsible for obtaining any and all other required federal, state, and local permits and approvals for the proposed project.

PASSED AND APPROVED by the Anchorage Parks and Recreation Commission this 12th day of May, 2016.

Voting Record Resolution 2016-12, Request for Revocable Use Permit for Cellular Communications Tower, Auxiliary Equipment, and Utility Related Easements at Kincaid Park:

In favor	Commissioner Jon Dyson Commissioner Michael McCambridge Commissioner Richard Mystrom Commissioner Jim Winchester
Opposed	None
Abstained	Commissioner Alison Smith
Absent	Commissioner Jim Balamaci Commissioner Peter Murphy Commissioner Harlow Robinson Commissioner Levi Robinson

B. PRC 16-15 CEA Easement in Marston Park

(PRC Resolution 2016-13)

Presented by: Tom Korosei, Park Planner

Presentation

Chugach Electric Association, Inc. (CEA) has requested the partial relocation of an old above-ground right-of-way easement for electric and telephone lines to a 15-ft. wide underground easement in Marston Park, along Marston Drive frontage. The underground line would be installed by excavating a trench and burying a conduit. The easement will not impact a roadway, CEA will provide restoration landscaping and revegetation of disturbed areas, and Parks and Recreation believes the easement will not significantly diminish potential use of Marston Park nor impact the appearance of the park. Maintenance of the underground utility is expected to cause less disturbance of the park in the future as compared to maintenance of above-ground utilities.

Turnagain Community Council has expressed its general support, but recommends "restoration of trees removed with similar species." Mr. Korosei stated that cottonwood trees will be replaced with birch or spruce, rather than more cottonwood.

Parks and Recreation Recommendation

The Department has no objection to granting the request for a relocated, underground utility easement in Marston Park to CEA, and recommends that the Commission support the proposed resolution, subject to the following conditions:

1. Chugach Electric Association, Inc., shall pay to the Municipality applicable fees in addition to fair market value and associated administrative costs.

2. Chugach Electric Association, Inc., shall obtain all other required permits and approvals for the proposed project.

3. Chugach Electric Association, Inc., shall relinquish the existing easement and all new facilities shall be underground unless otherwise approved in writing by Parks and Recreation.

4. Chugach Electric Association, Inc., shall provide landscaping including restoration and revegetation of disturbed areas using appropriate materials as directed by Parks and Recreation.

5. Chugach Electric Association, Inc., shall incorporate changes recommended by Parks and Recreation in consideration of comments of the Turnagain Community Council.

Public Appearance Requests

There was one public appearance request.

Cathy Gleason, Vice President of Turnagain Community Council, spoke on behalf of the Council. The council general supports the easement but would like CEA to mark trees it intends to remove and afford the Council an opportunity to approve the removal before clearing begins. She requests that this language be included in the resolution.

Discussion and Resolution

Commissioners discussed adding language to the proposed resolution that would ensure that CEA notifies the Turnagain Community Council of which trees it intends to remove prior to clearing. Mr. Korosei said Parks and Recreation would coordinate with CEA to approve removal of trees. Upon motion duly made by Commissioner Jim Winchester and seconded by Commissioner Michael McCambridge, it was unanimously resolved that Resolution No. 2016-13 be amended to include the following language:

“CEA shall mark trees that it proposes to remove in Marston Park to allow the MOA to approve prior to removal.”

Upon motion duly made by Commissioner Jim Winchester and seconded by Commissioner Alison Smith, Resolution No. 2016-13, Request for Relocation of Utility Easement at Marston Park for Underground Electrical Utility Line, as amended, was unanimously approved as follows:

RESOLUTION NO. 2016-13
**Request for Relocation of Utility Easement at Marston Park for Underground
Electrical Utility Line**

WHEREAS, the Anchorage Parks and Recreation Commission serves in an advisory capacity to both the Mayor and the Assembly; and

WHEREAS, the Anchorage Parks and Recreation Commission has the responsibility and duty to provide for the long term vision of our park system by ensuring that a balance of parks, natural resources, and recreation facilities provides for the health, welfare, and safety of all residents of the Anchorage Bowl; and

WHEREAS, Chugach Electric Association desires to partially relocate an above ground utility easement to install underground electric utility service through Marston Park to serve adjoining properties; and

WHEREAS, placing the line underground would minimize the visual intrusiveness of the utility equipment and help preserve the natural character of the park; and

WHEREAS, the requested relocated easement along the perimeter of the park both would coincide in part with areas affected by other utilities; and

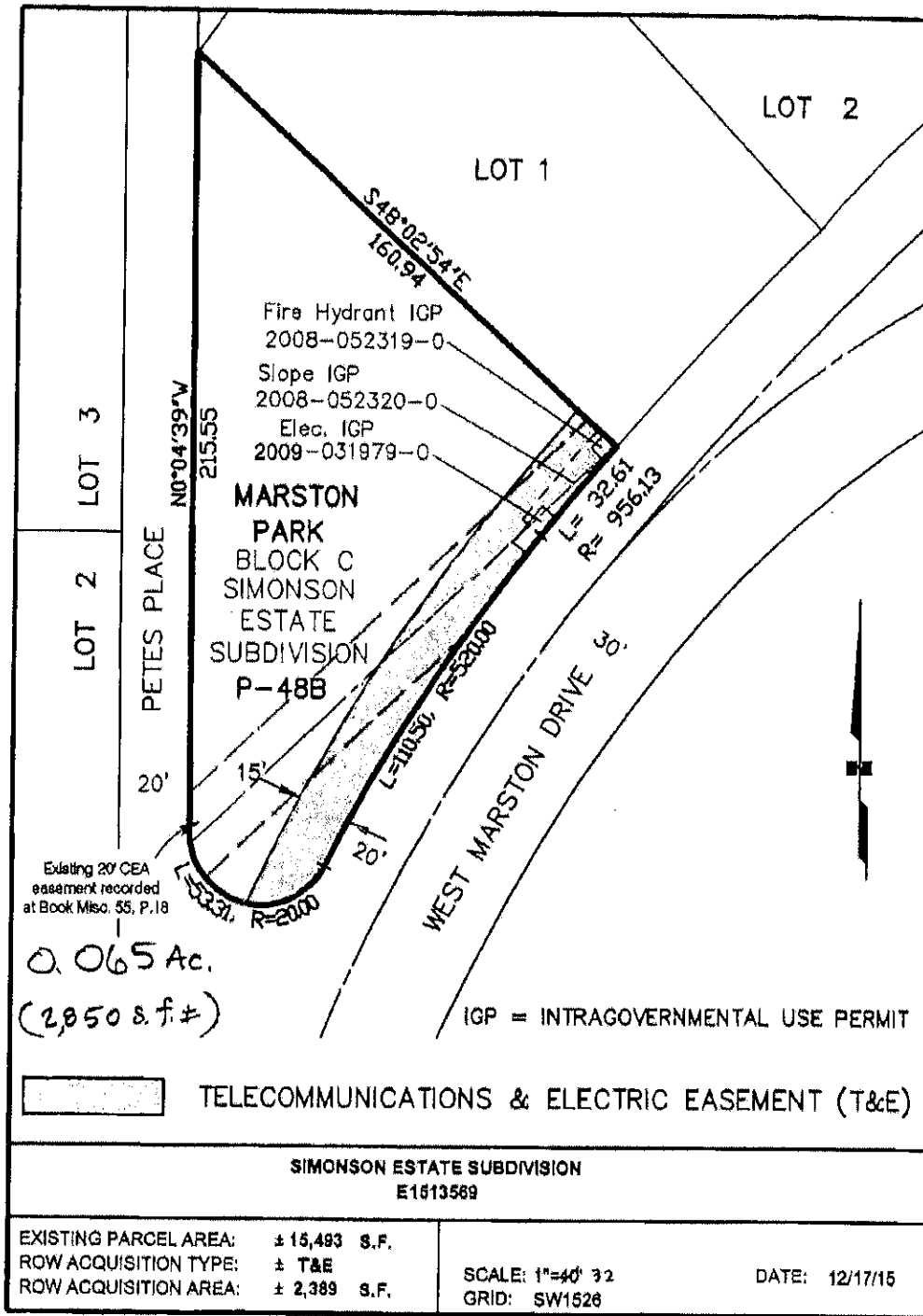
WHEREAS, the installation and maintenance of the underground line is not expected to significantly impair current or potential future development and public use of the park; now, therefore,

BE IT RESOLVED, that the Anchorage Parks and Recreation Commission recommends that the current above ground easement be relocated in part and that a 15-foot-wide non-exclusive easement along a portion of the boundary of Marston Park be granted to Chugach Electric Association, general as shown on the attached diagram, for the purpose of placement of an underground electrical utility line.

CEA shall mark trees that it proposes to remove in Marston Park to allow MOA to approve prior to removal.

PASSED AND APPROVED by the Anchorage Parks and Recreation Commission this 12th day of May 2016.

Attachment to Resolution 2016-13:



Voting Record Resolution 2016-13, Request for Relocation of Utility Easement at Marston Park for Underground Electrical Utility Line, as amended:

Motion to Amend:

In favor	Commissioner Jon Dyson Commissioner Michael McCambridge Commissioner Richard Mystrom Commissioner Alison Smith Commissioner Jim Winchester
Opposed	None
Abstained	None
Absent	Commissioner Jim Balamaci Commissioner Peter Murphy Commissioner Harlow Robinson Commissioner Levi Robinson

Amended Motion:

In favor	Commissioner Jon Dyson Commissioner Michael McCambridge Commissioner Richard Mystrom Commissioner Alison Smith Commissioner Jim Winchester
Opposed	None
Abstained	None
Absent	Commissioner Jim Balamaci Commissioner Peter Murphy Commissioner Harlow Robinson Commissioner Levi Robinson

C. PRC 16-17 Bike Anchorage Totem Counter

(PRC Resolution 2016-15)

Presented by: Maeve Nevins, Park Planner
Lindsey Hajduk, President, Bike Anchorage

Presentation

Bike Anchorage, is a local non-profit organization formed to make Anchorage a more bicycle friendly city. Bike Anchorage advocates on behalf of bicycle commuters and is focused on improving bicycle transportation for everyone in Anchorage. Anchorage currently has a strong bicycle community. Detailed data trail use by bike riders is needed to improve public support for trail projects and promote public awareness.

The totem counter will be installed at the intersection of the Lanie Fleisher Chester Creek Trail and the Tony Knowles Coastal Trail at the Westchester Lagoon. This is one

of the busiest multi-use trail intersections in Anchorage. Two sets of counter cables will be installed along both trails to capture the most amount of users, asphalt replacement (part of the greenbelt trail repair project) is scheduled in 2016 and can be combined with this project, the site currently does not have a counter and has been identified by the Municipal Traffic Department as an ideal location for a counter, and an electrical power source is located close by. Bike Anchorage will collect and organize the data for the Municipality and other public uses.

The project is supported by the South Addition Community Council, by the Anchorage Trails Initiative, and the Anchorage Park Foundation. Bike Anchorage has an Anchorage Park Foundation Challenge Grant of \$30,000 cash and \$30,000 of in-kind match. Parks and Recreation will pay for the asphalt repair as part of the greenbelt trail repairs. The Traffic Department will install the cables and provide technical support.

Parks and Recreation Recommendation

The Parks and Recreation Department believes this project will improve public support of trail projects and build community through education and awareness. The public process has been undertaken to identify the location and support is documented. The Department recommends that the Commission pass the proposed resolution in support of this project.

Public Appearances

Dan Gleason spoke in support of the project but was concerned that the numbers could be falsified by people running around the counter in circles or that the display equipment is at risk of being vandalized.

Ms. Nevins responded that the counter cannot be seen and the cable is underground, therefore it would be unlike that the numbers could be falsified, and that Department believes it unlikely that the display will be vandalized or stolen. The Department will be responsible to repair or replace the display and is willing to take that risk as it believes the benefits outweigh the risk.

Discussion and Resolution

Upon motion duly made by Commissioner Alison Smith and seconded by Commissioner James Winchester, Resolution No. 2016-15, Bike Anchorage Totem Counter, was unanimously approved as follows:

RESOLUTION NO. 2016-15
Bike Anchorage Totem Counter

WHEREAS, the Anchorage Parks and Recreation Commission serves in an advisory capacity to both the Mayor and the Assembly; and

WHEREAS, the Anchorage Parks and Recreation Commission has the responsibility and duty to provide for the long term vision of our park system by ensuring that a balance of parks, natural resources, and recreation facilities provides for the health, welfare, and safety of all residents of the Anchorage Bowl; and

WHEREAS, encouraging the public to ride bikes has health, safety, many other positive benefits; and

WHEREAS, Bike Anchorage strives to make Anchorage bicycle-friendly by creating a vibrant, livable and healthy city where it is safe and practical to go by bike; advocate for safe routes through the city for children, recreational riders, bike commuters and many others; educate children, motorists, and bicyclists to make Anchorage a safer place for everyone; encourage people to go by bike, especially those that are either new to biking or only occasionally go by bike; and

WHEREAS, Bike Anchorage was granted \$30,000 in matching Challenge Grant funds through the Anchorage Park Foundation to install a totem counter on a greenbelt trail; and

WHEREAS, the intersection of the Lanie Fleisher Chester Creek Trail and Tony Knowles Coastal Trail at Westchester Lagoon is one of the busiest multi-use trail intersections in Anchorage; and

WHEREAS, the proposed location is supported by the Park and Recreation Department, the Traffic Department, the Anchorage Park Foundation, the South Addition Community Council, the Trails Initiative and Bike Anchorage members, whom have all assisted in locating the totem counter site and selecting a preferred concept design; and

WHEREAS, the totem project will encourage Anchorage residents to go by bike more often and experience the Lanie Fleisher Chester Creek and Tony Knowles Coastal Trails; and

WHEREAS, the totem will activate families, neighbors, visitors and commuters near Westchester Lagoon with the need for improved safety in, extended ownership of, and responsibility for, bike safety in Anchorage; and

NOW THEREFORE BE IT RESOLVED that the Anchorage Parks and Recreation Commission approves the proposed design for the Bike Anchorage Totem Counter.

PASSED AND APPROVED by the Anchorage Parks and Recreation Commission this 12th day of May, 2016.

Voting Record Resolution 2016-15, Bike Anchorage Totem Counter:

In favor	Commissioner Jon Dyson Commissioner Michael McCambridge Commissioner Richard Mystrom Commissioner Alison Smith Commissioner Jim Winchester
Opposed	None
Abstained	None
Absent	Commissioner Jim Balamaci Commissioner Peter Murphy Commissioner Harlow Robinson Commissioner Levi Robinson

D. PRC 16-18 Anchorage Trails Wayfinding

(PRC Resolution 2016-14)

Presented by: Josh Durand, Park Superintendent
Dwayne Adams, Consultant

Presentation

This project being presented to the Commission is a wayfinding project currently proposed for the Anchorage trail system. The project is funded through the Anchorage Park Foundation, and is a part of the Anchorage Trails Initiative component of Anchorage Economic Development Corporation's Live.Work.Play campaign. Wayfinding enables people to orient themselves and navigate from place to place with ease. It includes place names, landmarks, maps and media. Trails help boost economic development by attracting tourists and new residents. Well designed trails that are easy to navigate promote a health community. The goals of this plan are to create consistent signage and wayfinding across Anchorage; promote Anchorage's identity as the number one place to live, work and play; develop identity signature for the trails, neighborhoods, and parks; establish a strong sense of community pride; create a system that focuses on directing people to parks, trails, landmarks, and other key locations in the community; create a plan that improves connections between parks, districts, neighborhoods, trails and other locations; and develop a system that meets user needs, discourages vandalism, and simplifies maintenance.

The Anchorage Park Foundation hired professionals who create a brand for the Anchorage Trail System which include a primary logo, a guide for acceptable colors and

fonts and directions on how to use the logo, neighborhood icons, and finally trail use icons. Next they developed a physical wayfinding system to create consistency throughout the trail system. An architect was hired to develop standard signage. The consultants developed three options for consideration by the public which provided a range of ideas using a combination of wood, metal, color and other components for specific signage types: gateways, kiosks with maps and user information, roadway wayfinding signage, trail wayfinding signage, mileage markers, and interpretive signage. The options were presented in public meetings and in a poll. Input from these sources determined the following: surfaces should be graffiti and vandalism resistant and easy to clean; emphasis should be on wayfinding not structures; steel should be used only where necessary and not as a dominant design element; "Anchorage Trails" logo should be a minor part of the signage; cultural themes are important; wood was a preferred construction material; and color is important but used only to ensure that users can identify the wayfinding elements and to stand out from the forest background. Concern about vandalism and ease of maintenance were key considerations. Consistency between current park standards and wayfinding signage was a concern.

Preferred Alternative

The preferred alternative, Option 4, provides the following elements:

Gateway: Concrete base with metal primary panel. Inclusion of trail name with reference to Dena'ina word for the creek/location. Wood uprights with Anchorage Trails Logo. Municipality of Anchorage Parks and Recreation represented on concrete base. Trail color as a design element.

Neighborhood Gateways: Wood post and panel arrangement that depicts neighborhood logos and has trail color incorporated. Also includes a sleeve of Native art patterns.

Kiosk: Offset roof sections with "mountain" structure reference. Map and user information on graphic surface. Trail color represented in text on sign.

Roadway direction signage: Meets Manual of Uniform Traffic Control Devices requirements that govern roadways. Anchorage Trails Logo with direction information in color. Upright is Telespar or wood.

Trail direction signage: Two types, 1-post and panel, and 2-totem. Post and panel has more verbiage and is appropriate for major trail intersections. Upright is wood and matches Neighborhood gateway design. Totem is for simpler applications and uses logos and smaller panels for messages.

Mile markers: Simple wood post that could be either supported by metal footing or imbedded directly in the ground. Includes both the trail name and trail color, with mile/kilometer marker and emergency locator information.

All applications would use emergency locator plaques to denote location for first responders.

The pilot project is proposed to connect the northernmost point of the Coastal Trail (downtown) to the Ship Creek Trail, through Mountain View and connecting both to the Glenn Highway Trail and to Russian Jack Springs Park. The pilot project is funded by the Anchorage Community Land Trust. Mr. Durand emphasized that this pilot project is being conducted in an area that is highly subject to vandalism and graffiti. Problems, flaws and faults in the design found in this pilot project will be remedied and the new information brought back to the Commission for review and approval before continuing with other phases of the project.

It is anticipated that the design documents will be completed by June 15, and the pilot project will commence on July 1 and finish in October 2016.

Parks and Recreation Recommendation

The Department of Parks and Recreation believes that the preferred alternative, Option 4, as presented represents a combination of community input, maintenance concerns, and design aesthetics appropriate for Anchorage trails, and recommends approval by the Parks and Recreation Commission.

Public Appearances

There were 5 public appearance requests.

Jeffrey Schmitz, Taku Campbell Community Council. Mr. Schmitz supports the wayfinding project as presented. He requests that the milepost markers installed on Campbell Creek Trail by the Eagle Scouts be left in place. He noted that the scout markers are the same color as the color chosen for the Campbell Creek Trail. He also would like to see more stakeholder involvement, as many people who use the trails and volunteer their time to cleaning up the trails, have not heard of this project. Overall, they really like the project and believe it is very important to the community.

Cathy Gleason, Turnagain Community Council. Ms. Gleason feels the project has a lot of merit but took no position on the actual design elements. The Council does request that the icon chosen for any trails or parks falling within Turnagain Community Council boundaries be presented to the Turnagain Community Council for approval rather than just decided by Parks and Recreation or its contractors, and believes discussion with the community councils should be ongoing before any more decisions

are made. Ms. Gleason personally would like to see the exact criteria that is going to be followed when making decisions on the signage, feels there are too many different sign designs and there we will end up with sign clutter, does not like the "sideways" design of the gateway signs, and would like the signs to integrate more closely with what is already present in the parks.

Gloria Manni stated that she likes nature not signs. She supports the concept of the project but noted that she thinks signage should be simple and not "busy" and this project has too many signs. She likes simplicity on the trails. Also of concern to her is that what Parks and Recreation thinks the Dena'ina language signs say may not what the people who speak the language really want to say. Ms. Manni specifically wants the resolution amended to require continued community involvement for all decisions made about the signs.

Barbara Karl, Airport Heights Community Council, says the council supports the project but does not like the icons that have been chosen; however, the project staff continue to work with the Council on that. She believes the signs and placement of standardized location markers on the trails will help promote public safety by providing emergency responders with location information.

Beth Nordlund, Anchorage Park Foundation, stated that the Foundation likes the colors that are already in use, but believes the color chosen for the Fish Creek Trail should be changed. It's too close to another color already in use. A decision to change the color should be made before resurfacing of the trail takes place in 2017 and before trail maps are printed.

Discussion and Resolution

Josh Durand responded to some of the concerns expressed by those providing public testimony. Guidelines (criteria) for placement of the signs is being developed, but those guidelines will be used in a subjective manner for each location in order to reflect what the community wants. Community involvement will continue to play a large part in the remaining phases of the wayfinding project.

Dwayne Adams stated that within the next month a sign manual is being developed which will provide very general guidelines on how to use those, as well as the material types, the sizes, the intricacies of how to apply this. With regard to the "sideways" signs Ms. Gleason commented on, he feels it isn't appropriate to suggest that people are not going to be able to read that "sideways" sign as it is pretty straightforward. Furthermore, at this time there is only one of those signs, at Ship Creek Trail gateway, being used in the pilot project, the rest are horizontal signs.

Discussion among the Commissioners centered around community concerns regarding future decisions on the remaining phases of the project being made without community

input, and felt that each portion or phase of the program should be brought back to the Commission for approval, and that language should be added to the resolution.

Upon motion duly made by Commissioner Michael McCambridge and seconded by Commissioner Richard Mystrom, it was unanimously approved to amend Resolution No. 2016-14 to add the following paragraph:

“Plans for specific portions or phases of the project shall be brought back to the Parks and Recreation Commission for review and approval prior to implementation.”

Upon motion duly made by Commissioner Richard Mystrom and seconded by Michael McCambridge, PRC Resolution No. 2016-14 A Resolution of the Anchorage Parks and Recreation Commission Addressing Wayfinding for the Anchorage Trails System, as amended, was unanimously approved as follows:

PRC RESOLUTION NO. 2016-14

A Resolution of the Anchorage Parks and Recreation Commission
Addressing Wayfinding for the Anchorage Trails System

WHEREAS, the Anchorage Parks and Recreation Commission serves in an advisory capacity to both the Mayor and the Assembly; and

WHEREAS, the Anchorage Parks and Recreation Commission has the responsibility and duty to provide for the long-term vision of our park system by ensuring that a balance of parks, natural resources, and recreation facilities provides for the health, welfare, and safety of all residents of the Anchorage Bowl; and

WHEREAS, Anchorage has a very large visitor population that has become aware of the expansive nature of the Anchorage trail system and that population is in need of wayfinding that directs them to locations of interest and prevents them from becoming lost; and

WHEREAS, public surveys indicate that numbers of Anchorage residents are confused within the Anchorage trail system and are not familiar with where Anchorage trails are located; and

WHEREAS, numbers of Anchorage residents indicate that they would use trails more often if they knew where Anchorage trails were and where they took trail users; and

WHEREAS, many people feel unsafe on the trails because they fear becoming lost;

WHEREAS, on May 12, representatives of the Parks and Recreation Department provided a presentation of the Draft standards for the Anchorage trail system wayfinding that would address Anchorage's needs to address safety and wayfinding needs; and

WHEREAS, the representatives summarized the public process that included public meetings, stakeholder meetings, and a public opinion poll; and

WHEREAS, the public provided review of three options with comments concerning these options; and

WHEREAS, staff and consultants developed an Option 4 to address community input and Anchorage Parks operations concerns; and

WHEREAS, staff's presentation presented an aesthetic and logical solution to providing a wayfinding system that would address wayfinding, maintenance, and safety concerns;

NOW, THEREFORE, ANCHORAGE PARKS AND RECREATION COMMISSION RESOLVES:

The ANCHORAGE PARKS AND RECREATION COMMISSION approves staff's recommendation for Option 4 as a preferred option for Anchorage's trails wayfinding system.

Plans for specific portions or phases of the project shall be brought back to the Parks and Recreation Commission for review and approval prior to implementation.

PASSED AND APPROVED by the Anchorage Parks and Recreation Commission this 12th day of May, 2016.

Voting Record Resolution 2016-14, A Resolution of the Anchorage Parks and Recreation Commission Addressing Wayfinding for the Anchorage Trails System:

Motion to Amend Resolution:

In favor	Commissioner Jon Dyson Commissioner Michael McCambridge Commissioner Richard Mystrom Commissioner Alison Smith Commissioner Jim Winchester
Opposed	None
Abstained	None
Absent	Commissioner Jim Balamaci Commissioner Peter Murphy Commissioner Harlow Robinson Commissioner Levi Robinson

Amended Resolution:

In favor	Commissioner Jon Dyson Commissioner Michael McCambridge Commissioner Richard Mystrom Commissioner Alison Smith Commissioner Jim Winchester
Opposed	None
Abstained	None
Absent	Commissioner Jim Balamaci Commissioner Peter Murphy Commissioner Harlow Robinson Commissioner Levi Robinson

VIII. Information Item

PRC 16-18 Delaney Park Tennis Courts

This item was removed from the Agenda and will be presented at a future Parks and Recreation Commission meeting.

IX. Commissioner Comments

Commissioner Richard Mystrom commented that he saw the bike repair station being used at Westchester Lagoon and that it was a nice thing to have in place on the trail.

X. Upcoming Meetings

The next regular meeting of the Anchorage Parks and Recreation Commission is scheduled for 6:00 p.m., Thursday, June 9, 2016, at Spenard Recreation Center.

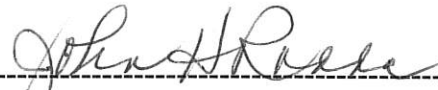
XI. Adjournment

Upon motion duly made by Commissioner Richard Mystrom and seconded by Commissioner Jim Winchester, the motion to adjourn was unanimously approved.

MINUTES APPROVED this 9th day of JUNE, 2016.



Chair
Parks & Recreation Commission



Director
Parks & Recreation