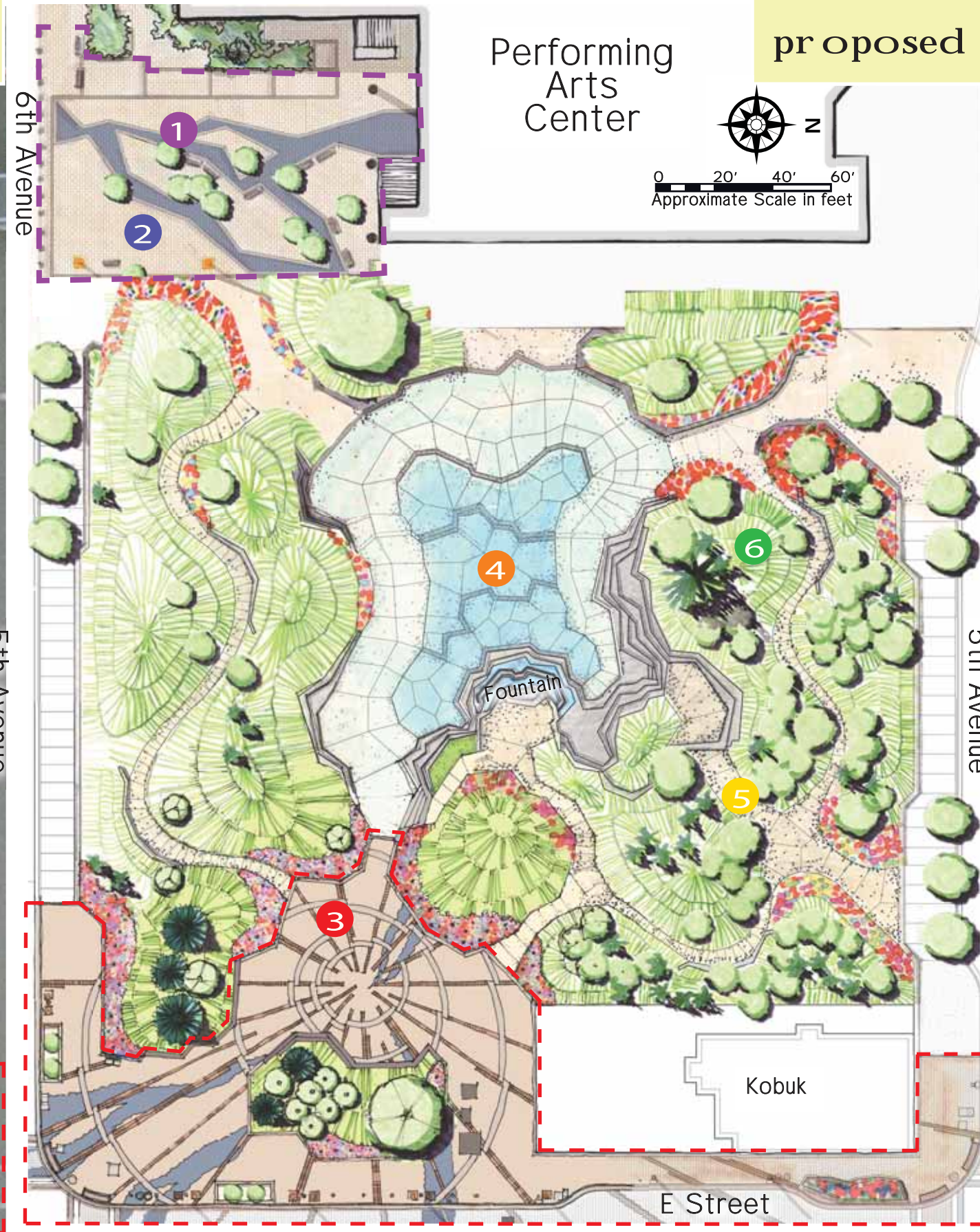




We want to know what you think of proposed changes to

TOWN SQUARE PARK



key to proposed changes

- 1** Pedestrian Improvements: pavers, seating, and planters.
**F Street/Convention Center Project funding
- 2** Shifting subsurface & brick repair
**F Street/Convention Center Project funding
- 3** Open plaza, added seating walls, electrical upgrade, lighting, and informational kiosk
**E Street Pedestrian Project funding
- 4** Summer Fountain ~ Winter Skate Area
**Park Bond funding
- 5** New paved "garden" path and stairs
**Park Bond funding
- 6** Irrigation of trees, turf & annual flower beds. *Park Bond funding



1 Pedestrian Improvements: seating, planters, and covered walkway
**F Street/Convention Center Project funding

The "F Street Connectivity" project design creates a highly urban pedestrian environment to enhance year around connectivity among the F Street corridor's 4 significant public facilities:

- New Dena'ina Civic and Convention Center
- Performing Arts Center (PAC)
- Town Square Park; and
- The Egan Center

Major project goals are to create a pedestrian scale physical connection between these facilities, and improve vehicular traffic functionality on F Street and 6th Avenue.

The proposed improvements within Town Square Park are all located south of the PAC and provide a gateway into the park from the 6th Avenue and F Street intersection. They are part



Model of proposed "F Street" pedestrian amenities - The view is looking South from the Performing Arts Center toward the Convention Center to the intersection of 6th Ave. and F Street.

of a larger, several block project with a cohesive design drawing from the glacier/tectonic theme of the original Town Square Plan and the current park as it is built today.

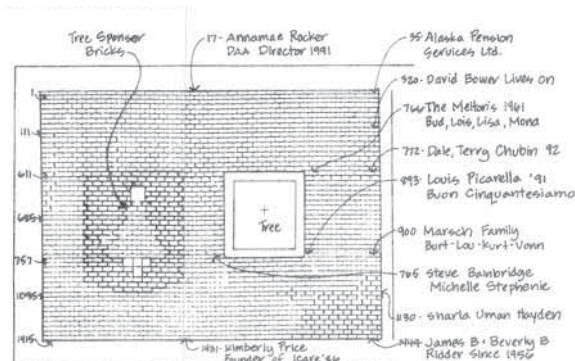
The F Street project is designed with ice free connections using a snowmelt system (e.g., sidewalks heated to just a few degrees above freezing), and durable pavers with a simple but strong "fissure" pattern featured in the surfacing. This feature deliberately draws pedestrians into the park.

The design also takes into account the need to soften the tactile environment by using friendlier wood surfaces on benches, litter receptacles and tree planters. Vertical elements aid wayfinding (tree planters and pedestrian lights on a defined grid) and help reduce visual clutter. The wayfinding will also be enhanced at night by the structured and consistent layout of the pedestrian scale street lights.

2 Shifting subsurface & brick repair
**F Street/Convention Center Project funding

Town Square's bricks were originally set in a sand foundation intended for foot traffic. Over the years, winter freezing and thawing and heavy maintenance vehicles have caused bricks to "pop-up" and break. As part of the F Street Connectivity project, funds have been earmarked to improve the subsurface and install much larger and stronger pavers. About 10% of the original bricks (300 s.f.) would be relocated as a result. Given the importance of these bricks to donors and community members a variety of options will be considered:

- Relocate bricks somewhere else in the park (e.g., on a pathway, vertical face, etc.)
- Remove entirely and recognize donors using a plaque or another design feature



Town Square's bricks and personalized dedications (as seen on the "official brick map" above) are a physical testament to the many individuals who invested in making the park a reality.



6th & E St - Town Square's eastern edge, is proposed as a pedestrian friendly zone

3 Plaza, seating walls, electrical upgrade, lighting, & informational kiosk
**E Street Pedestrian Project funding

The "E Street Pedestrian Project" is a multi-block improvement project spanning north-south from 9th Avenue and the Park Strip to the Eisenhower Memorial on 2nd Avenue. It is intended to make downtown more walkable year round and link a number of public facilities and parks, including Town Square as the "Heart of downtown".

During the development of the E Street design, community members attending open houses and workshops expressed a strong desire to evolve the adjacent edge of Town Square to better meet current Town Square uses. As a result, the project proposes and has funding for the following improvements:

- 1) A new plaza on the eastern edge intended to:
 - Better serve existing Town Square Park venues by providing more usable space
 - Help make the center of the park more visible to improve safety and security
 - Invite pedestrians into the park with a seamless connection between plaza and sidewalk. This can be further extended during special events by closing E Street.

The "plaza" area is created by removing a portion of the berms and associated landscaping along E Street and 5th Ave that block visibility into the park and that were identified as pedestrian safety concern by community members. A raised planting area will remain around the existing Mayday tree. The new paving impacts about 300 sf of original bricks.

2) New infrastructure and amenities

- At grade tree planters as well as hanging flower baskets and large planters will be installed at the sidewalk edge.
- Electrical upgrade with outlets strategically located along the plaza perimeter

- Improved lighting
- E Street sidewalk and roadway changes to make it more pedestrian friendly (reduce vehicular speeds, install curb bulbs, unique pavers, pedestrian scale lighting with hanging flower baskets and banners along the sidewalk.
- Seating is an integral component of the retaining walls that surround the plaza and provide opportunities for citizens to enjoy activities occurring in the plaza.

3) Wayfinding & urban art

- Coordinated pavement pattern that serves as a wayfinding mechanism to pedestrians.
- Informational Kiosk providing a central location for information.
- Athabascan based art and design concepts: Research conducted by the Anchorage Downtown Partnership determined that there is a very strong desire by the community to incorporate native art and history in downtown. A group of well-regarded native Alaskan artists developed ideas and concepts for incorporating art and Athabascan culture into the E Street urban design. The "E Stream" concept was conceived to signify its role as a major route through downtown and to highlight its connection with the "headwaters" at Town Square Park. The following features form the basis of the art concept:

- Stream: Special paving inlays are used to represent streams flowing out of the park's plaza into the surrounding streets. These "streams" will function as wayfinding elements drawing pedestrians into the park and well as provide a link to the native history and culture.
- Fish trap: Fish basket traps used by Athabascans to harvest salmon from the rivers serve as a central unifying element in the E Stream concept. Traps are represented in a 2-dimensional form in the plaza paving pattern and 3-dimensionally in the wayfinding kiosks.



Town Square Improvements are proposed to expand across the sidewalk and E Street



Foreground - new stage concept; background - summer pond / winter skating

Park Bond Projects - In 2007, Anchorage voters approved bonds including funds for improving Town Square. Currently a number of ideas for using this funding are under consideration by a mayor appointed Citizens Advisory Group. Ideas include:

4 Permanent Civic & Performance Stage
**Park Bond Funding

Adjacent to the E Street Plaza, a stage is proposed to be constructed behind the fountain to serve as a focal point for existing venues.

5 Summer Fountain - Winter Skate Area
**Park Bond funding

The original Town Square design incorporated year-round water. This proposed improvement will replace the poorly growing grass with pavers and create an area that can be flooded and drained as desired as a year-round water feature.



A "Garden Path" is proposed to formalize an existing dirt footpath

6 New paved "garden" path and stairs
**Park Bond funding

Many pedestrians cross the park at an angle. This idea is to pave the dirt path and add concrete stairs making this route more accessible.

7 Irrigation of trees, turf & annual flower beds
**Park Bond funding

Town Square is a lush green space in the heart of our city and could use an irrigation system to reduce ongoing maintenance costs.