



Municipality of Anchorage, Alaska
Parks & Recreation Department

632 W. 6th Avenue, Suite 630

P.O. Box 196650

Anchorage, AK 99519

Tel 907-343-4355

URL www.muni.org/departments/parks



MEMORANDUM

Date: March 3, 2017

To: Parks & Recreation Commission

Cc: Josh Durand, Parks Superintendent

From: Tom Korosei, Park Planner

Project: **PRC 2017-14** Improvements to Hostetler Park

PROJECT OVERVIEW

The Parks and Recreation Commission is requested to approve proposed improvements to Hostetler Park. An overview of the project was presented to the Commission at its February 9, 2017, meeting.

The Parks and Recreation Department agrees that the park would benefit by such improvements.

Staff understands that the project was initiated by "Victims for Justice," an organization whose mission is to champion the rights of victims of violent crimes. The organization also helps promote the memory of victims of homicide through programs that include ceremonies and a monument at Hostetler Park, first installed in the early 1990s.

Additional information about the project is attached.

It is noted that Hostetler Park is named in honor of Chester Hostetler, for his dedicated service to the people of Anchorage. A commemorative plaque will remain and is incorporated into the proposed plan.

The designer indicates that the proposal was approved by the Downtown Area Community Council and will provide minutes or resolution of support.

The Parks and Recreation Department staff will work with designer and sponsors to refine and finalize plans, and it is expected that the sponsor(s) will obtain all additional approvals and permits that may be required.

STAFF RECOMMENDATION

The Parks and Recreation Department requests that the Parks and Recreation Commission approve the attached resolution of support for the proposed improvements to Hostetler Park.

Cc: Peter Briggs, Corvus Design



Municipality of Anchorage, Alaska
Parks & Recreation Commission

632 W. 6th Avenue, Suite 630
P.O. Box 196650
Anchorage, AK 99519



Resolution No. 2017-06

Request for Approval of Proposed Improvements to Hostetler Park

WHEREAS, the Anchorage Parks and Recreation Commission serves in an advisory capacity to both the Mayor and the Assembly; and

WHEREAS, the Anchorage Parks and Recreation Commission has the responsibility and duty to provide for the long term vision of our park system by ensuring that a balance of parks, natural resources, and recreation facilities provides for the health, welfare, and safety of all residents of the Anchorage Bowl; and

WHEREAS, Hostetler Park is a small park in Downtown Anchorage, dedicated in 1966; and

WHEREAS, Hostetler Park provides a venue for the "Victims for Justice" memorial to victims of violent crimes; and

WHEREAS, Hostetler Park merits effort and investment to improve its appearance and function to serve the identified community purposes; and

WHEREAS, the Anchorage Downtown Rotary Club has offered to sponsor such park improvements; and

WHEREAS, the Parks and Recreation Department staff understands that the Downtown Area Community Council has reviewed and is in support of the proposed plans; and

WHEREAS, the Parks and Recreation Department generally supports the proposed park improvements; now, therefore,

BE IT RESOLVED, that the Anchorage Parks and Recreation Commission supports in principle the proposed improvements to Hostetler Park to incorporate features to continue memorials to "Victims for Justice" as well as Chester Hostetler, and to improve Hostetler Park as a neighborhood park for the enjoyment of Anchorage citizens and visitors; provided, the sponsor(s) and designers will work with Parks and Recreation Department staff to refine and finalize plans, and the sponsor(s) shall obtain all additional approvals and permits that may be required.

PASSED AND APPROVED by the Anchorage Parks and Recreation Commission this 9th day of March, 2017.

Chair
Parks and Recreation Commission

ATTEST:

John H. Rodda, Director
Parks & Recreation Department

January 25, 2017

Anchorage Community Parks

Dear Committee,

We are reaching out to introduce our plan to rejuvenate Hostettler Park. Located at the park, is the Victims for Justice memorial.

History of Organization: Victims for Justice (VFJ) is a local nonprofit organization founded in 1985 by Janice Lienhart and Sharon Nahomey after their family members were brutally murdered. Court hearings regarding the case were closed to the public, denying family members the right to be heard. Lienhart and Nahomey have been instrumental in the victims' rights movement in Alaska, creating a place where victims of violent crime can get professional assistance while also coping with their grief and trauma.

Mission: Victims for Justice provides vital assistance for victims of violent crimes. By championing victims' rights, we help those affected to heal from trauma and grief, while advocating for change within the community justice system.

Remembrance Ceremony: Each year, typically in July, Victims for Justice and several community leaders come together to conduct a ceremony to remember victims of homicide. Hosted at Hostettler Park, the 2016 ceremony included the reading of over 300 names and was attended by better than 100 people. Having attended this past year, we can share the positive impact that continued support can have on the rippling effect of violence.



2016 Remembrance Ceremony



Victims Memorial in the winter

Project Details: At the direction of President Lynne Seville, Anchorage Downtown Rotary has adopted this project as part of their annual community outreach. Their efforts, supplemented by guidance by the Anchorage Parks Foundation and several private sector supporters should prove to be sufficiently funded with an abundance of input. Our goal is to beautify the area for Anchorage visitors, provide a peaceful place to memorialize loved ones, and enhance the accessibility and safety so that families can visit the memorial year-round.

Respectfully,


Chaplain Diane Peterson & Paula Bradison





Not to scale

HOSTETLER PARK

Aerial Photo of Existing Conditions

REV: 01/25/2017



View from across 3rd Avenue & L Street corner (facing southeast)



View north along parking on east side of site



View into southeast corner of site



View east along parking on south side of site

HOSTETLER PARK

Existing Conditions



View west to Hostetler plaque



View south toward Hostetler plaque



Hostetler plaque



View south to Alaska Victims Memorial



Alaska Victims Memorial



Alaska Victims Memorial

HOSTETTLER PARK

Existing Conditions

REV: 01/25/2017

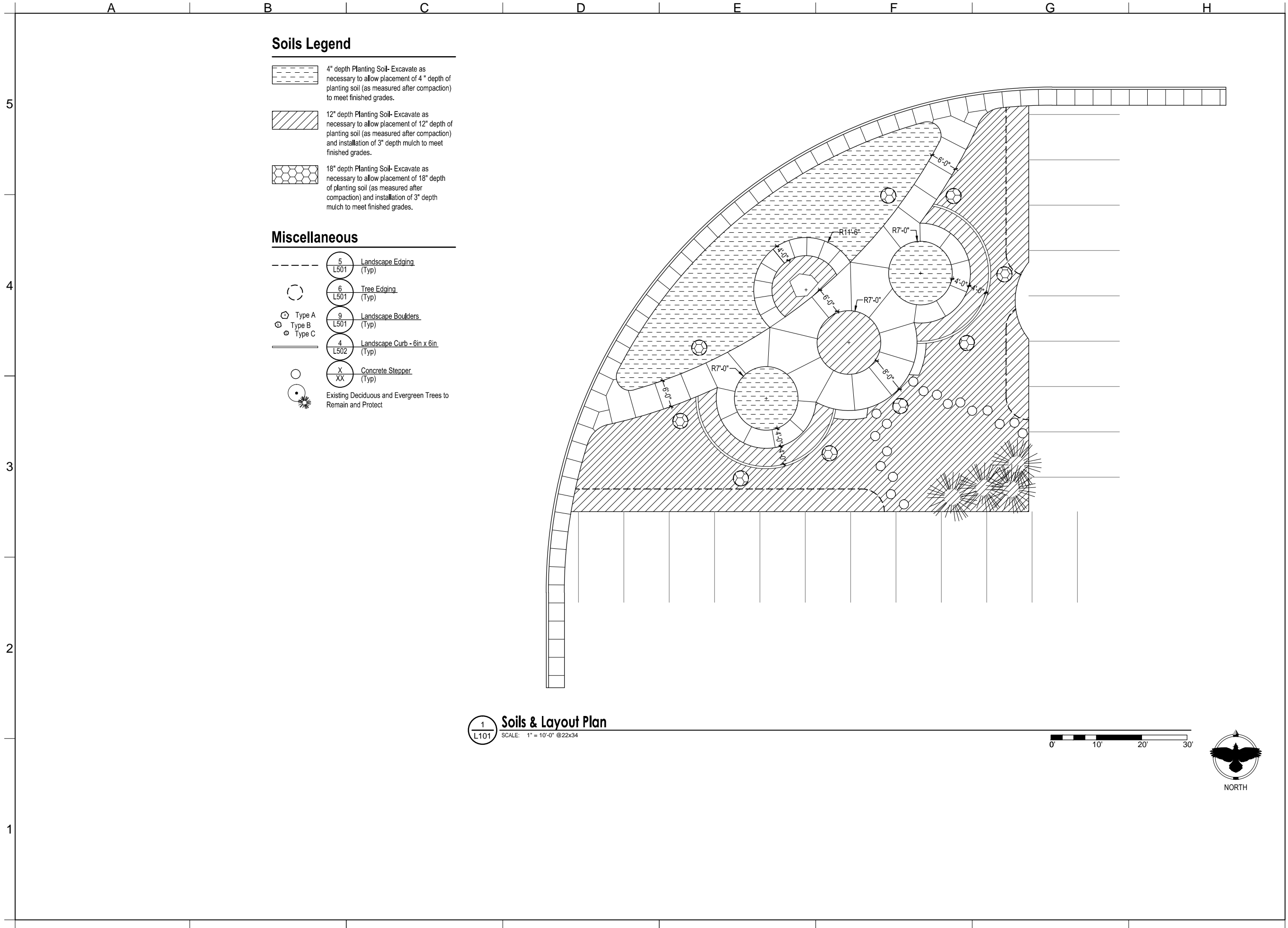


HOSTETLER PARK

Schematic Design

REV: 01/25/2017

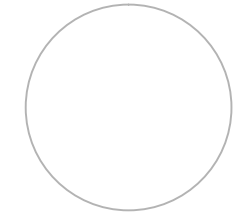
Drawing j:\pro--16--04 hostetler park\2 - CAD\Corvus--Sheets Hostetler Park.dwg last saved on 2/24/2017 10:26 AM was plotted by Erik Jones on 2/24/2017 12:28 PM



Landscape Architecture
www.corvus-design.com

Anchorage - 907.222.2859
2506-B Fairbanks St. 99503
Juneau - 907.988.9000
119 Seward St. 99801

SEAL:



Hostetler Memorial Park

Schematic Design

Anchorage, Alaska

1" ACTUAL

If the above dimension does not measure one inch (1") exactly, this drawing will have been enlarged or reduced, affecting all labeled scales.

DATE: 2017-02-01
JOB NUMBER: PRO-16-04
DRAWN BY: EJ
CHECKED BY: PB

Soils & Layout Plan
SHEET #:

L101

© CORVUS DESIGN. ALL RIGHTS RESERVED

Drawing: j:\pro-16-04 hostetler park\2 - CAD\Corvus-Sheets Hostetler Park.dwg last saved on 2/24/2017 10:26 AM was plotted by Erik Jones on 2/24/2017 12:28 PM

Planting Schedule

Evergreen Trees- See Detail:

Qty.	Symbol	Label	Latin Name	Common Name	Size	Furnished	Notes
XX		PG	Picea glauca	White Spruce	6' HT	B&B	

Deciduous Trees- See Detail:

Qty.	Symbol	Label	Latin Name	Common Name	Size	Furnished	Notes
8		BPG	Betula papyrifera	Cutleaf Weeping Birch	2" CAL	B&B	Single stem
1		MS	Malus 'X'	'X' Crabapple	1-1/2" CAL	B&B	Single stem

Shrubs - See Detail:

Qty.	Symbol	Label	Latin Name	Common Name	Size	Furnished	Notes
31		PS	Philadelphus 'Snowbelle'	Mock Orange	#2 18" MIN	CG	
50		SP	Spiraea prunifolia	Bridal Wreath Spirea	#2 18" MIN	CG	

Groundcovers- See Detail:

Qty.	Symbol	Label	Latin Name	Common Name	Size	Furnished	Notes
XX		CM	Convallaria majalis	Lily of the valley	#1	CG	12" OC Triangular spacing.
XX		NS	Narcissus 'xxx'	White Daffodil	#1	Bulb	12" OC Triangular spacing.










Miscellaneous

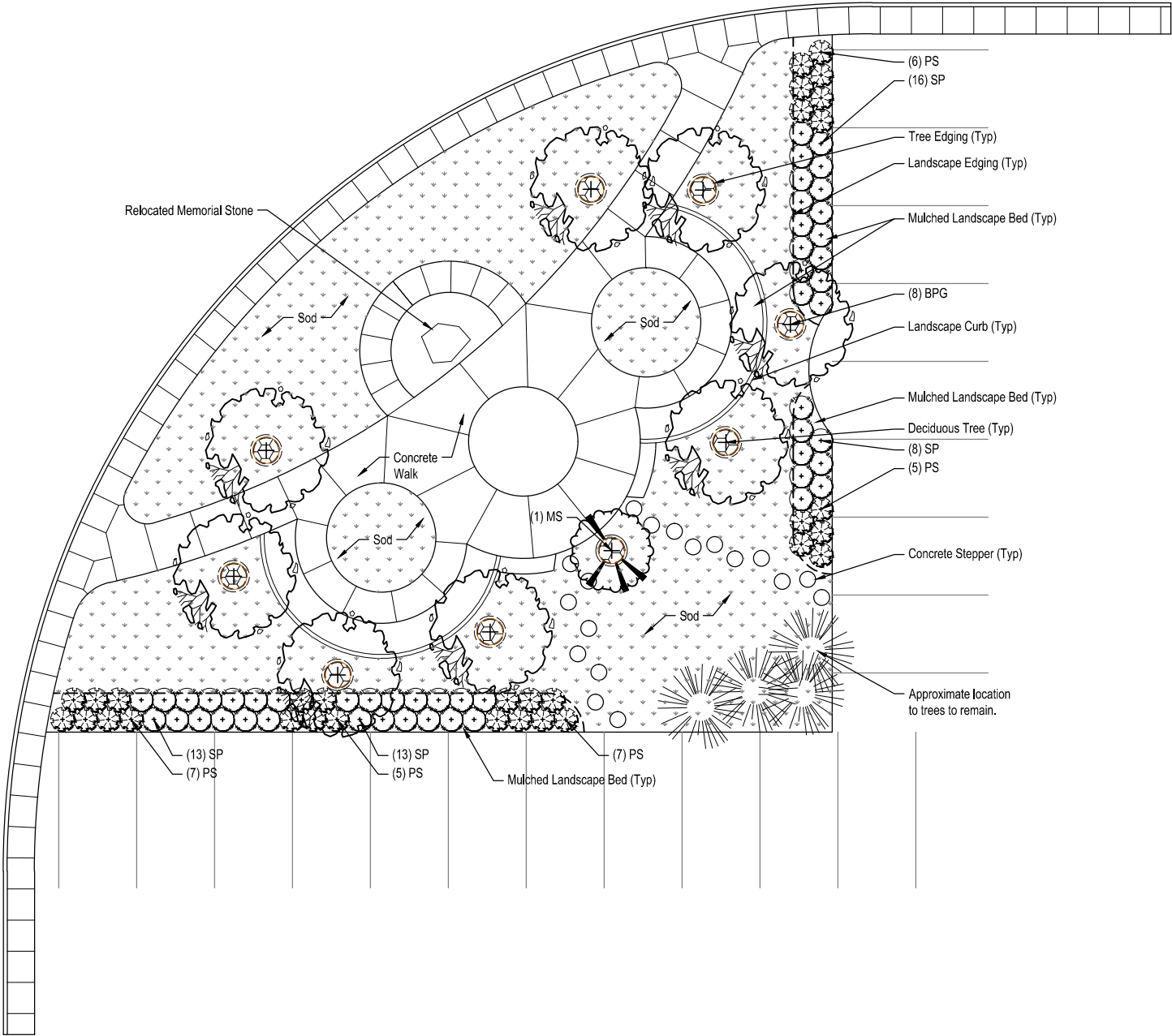
	Sod	xx		Boulder Type A		Landscape Boulders (Typ)
		xx		Boulder Type B		
		xx		Boulder Type C		
		---		Landscape Edging (Typ)		

General Notes:

- All plants shall be nursery grown to ANSI Z60.1 or native transplants to ANSI Z60.1.
- Install XX inches of planting soil (as measured after compaction) and seed with mix as indicated on planting plans. (Remove this note, if including soils plan.)
- All disturbed areas not indicated on plans are to receive 4" depth planting soil and seed.
- All deciduous trees to receive moose protection fence. Refer to detail X/L50X.
- SPECIFICATION SECTIONS 02920, 02930, 02940 AND 02945 ARE A COMPONENT OF THE LANDSCAPE CONSTRUCTION DOCUMENTS. ALL LANDSCAPE WORK SHALL BE BASED ON THESE DRAWINGS IN COMBINATION WITH THE ABOVE REFERENCED SPECIFICATION SECTIONS. IF YOU DO NOT HAVE THESE SPECIFICATIONS, REQUEST THEM. SUBMITTAL OF BID SHALL BE RECOGNITION THAT SPECIFICATIONS HAVE BEEN RECEIVED.

Miscellaneous

	<div>5</div> <div>L501</div>	<u>Landscape Edging</u> (Typ)
	<div>6</div> <div>L501</div>	<u>Tree Edging</u> (Typ)
<div> Type A</div> <div> Type B</div> <div> Type C</div>	<div>9</div> <div>L501</div>	<u>Landscape Boulders</u> (Typ)
	<div>4</div> <div>L502</div>	<u>Landscape Curb - 6in x 6in</u> (Typ)
<div>  </div>	<div>X</div> <div>XX</div>	<u>Concrete Stepper</u> (Typ)
Existing Deciduous and Evergreen Trees to Remain and Protect		



1 Landscape Plan
SCALE: 1" = 10'-0" @22x34

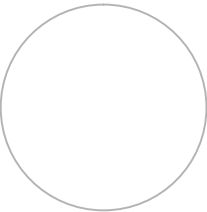
0' 10' 20' 30'



Landscape Architecture
www.corvus-design.com

Anchorage - 907.222.2859
2506-B Fairbanks St. 99503
Juneau - 907.988.9000
119 Seward St. 99801

SEAL:



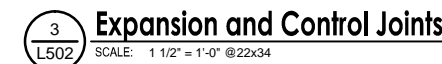
Hostetler Memorial Park
Schematic Design
Anchorage, Alaska

DATE: 2017-02-01
JOB NUMBER: PRO-16-04
DRAWN BY: EJ
CHECKED BY: PB

Landscape Plan
SHEET #:

L102



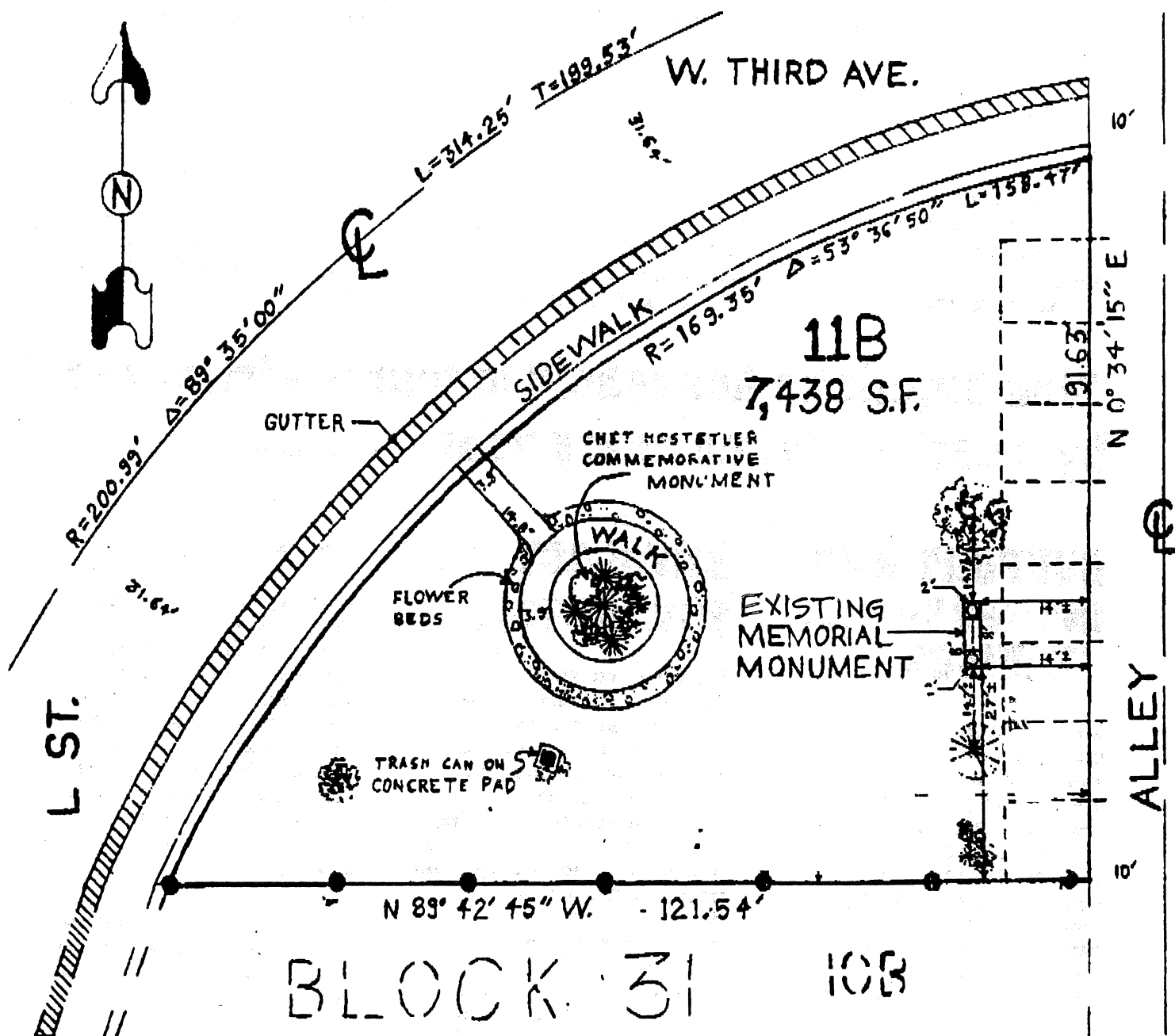




HOSTETLER PARK

Birds-Eye View Rendering

REV: 02/24/2017



LEGEND:

- 6" x 4' CONCRETE POST
- ✱ CONNIFEROUS TREE
- ✿ DECIDUOUS TREE
- ▨ GUTTER

NOTES:

1. ALL INFORMATIONAL CALLS ARE RECORD INFORMATION TAKEN FROM A PLAT OF THE L ST. SLIDE REPLAT, PLAT RECORDING NO. 67-30.

PRELIMINAY PLOT PLAN
OF
LOT 11B, BLOCK 31,
ANCHORAGE TOWNSITE
7,438 SQ. FT. MORE OR LESS

PREPARED BY:

K. BROTHERTON

SCALE:

1" = 20'

WORK ORDER #:

V4J-1-98

DATE DRAWN:

FIELD BOOK: