



## MUNICIPALITY OF ANCHORAGE, ALASKA

### PARKS & RECREATION DEPARTMENT

632 W. 6<sup>th</sup> Avenue, Suite 630

P.O. Box 196650

Anchorage, AK 99519

Tel 907-343-4355

URL [www.muni.org/departments/parks](http://www.muni.org/departments/parks)



## MEMORANDUM

Date: May 10, 2018

To: Parks & Recreation Commission

Cc: Josh Durand, Parks Superintendent

From: Steve Rafuse, Park Planner

Project: PRC 18-15: Taku Lake Park Master Plan

### OVERVIEW

Taku Lake Park is a 63.19 acre park located along the Campbell Creek Greenbelt in the Taku/Campbell neighborhood of Anchorage. The park is classified as a community use park and is comprised of six individual parcels, all owned by the Municipality of Anchorage and managed by the Parks and Recreation Department. Taku Lake Park features both developed facilities and natural areas providing visitors with a variety of recreational experiences.

The most recent master plan was completed in 1997 and upgrades are needed to address current issues and meet the demand for recreational facilities. The *Taku Lake Park Master Plan* provides a guiding vision for the management, maintenance and development of Taku Lake Park by aiming to balance recreational uses with the preservation of important natural resources.

This master plan identifies current and future needs, address issues and concerns, and establishes a framework for future management, maintenance and development consistent with the 20-year vision for the park.

### GOALS OF THE MASTER PLAN

- Understand community recreation needs as it relates to Taku Lake Park
- Identify and prioritize future improvements consistent with the community vision for the park
- Balance the development of new facilities with the preservation of existing natural areas
- Provide much needed investment and upgrades at the park
- Improve access, connections, and circulation to address areas of congestion and minimize conflicts between park and trail users
- Address community safety concerns such as homeless camps, vandalism, and petty crime
- Identify and develop strategic partnerships with public and private organizations to better manage, maintain, program, and invest in Taku Lake Park
- Create a tool for future fundraising

## BACKGROUND

Taku Lake was originally formed as the result of gravel extraction in the area throughout the 1960s. In 1976, the Municipality acquired the property and in 1978 two tennis courts were constructed off of Rainy Place. During the 1980s, development of the park began with the addition of two new parking lots, an adult fitness area, picnic areas, shoreline improvements, trails and open space. In 1989, the Anchorage Kiwanis Club donated a floating dock with ADA access. This dock was later removed after a 2002 incident in which a man drowned.

In the 1990s, Taku Lake Park saw further development with the addition of a picnic shelter and the construction of the Campbell Creek Trail. In 1997, the Taku-Campbell Community Council and the Parks and Recreation Commission approved a master plan identifying further upgrades to the park.

In 2003, a playground was built but was later destroyed in 2014 by arson. In 2004, a small skatepark was built and later upgraded with funding from the Anchorage Park Foundation in 2011. Also in 2004, a bridge across Campbell Creek was constructed connecting the park with C Street at 76th Ave. In 2016, Anchorage Parks and Recreation began working with community members and park users to update the master plan for Taku Lake Park.

## PLANNING AND PUBLIC INVOLVEMENT

Public involvement in park planning is essential to ensuring that the management and development of Taku Lake Park is consistent with the desires of the community. The public involvement process was led by the Anchorage Parks and Recreation Department with support from local planning and design firms R&M and Bettisworth North. The planning team facilitated a public involvement process that included outreach and social media, three (3) advisory group meetings, two (2) public workshops, an online survey, and an agency coordination meeting.

## COMMUNITY PRIORITIES

Public input during the planning process was used to identify priorities and inform the development of the *Taku Lake Park Master Plan*. These priorities range from improving maintenance and restoring damaged natural areas to investments in new facilities and safety improvements. The following community priorities were expressed during the planning process.

**New Amenities:** Community members identified new amenities such as benches, trash cans, mutt mitt stations, bike racks, interpretive information, and restrooms to make the park more welcoming.

**Lighting and Safety Improvements:** Public safety improvements such as lighting and better visibility in parking lots and along trails were identified as a high community priority.

**Replacement of the Playground:** Since the playground was destroyed by arson in 2014, community members have advocated for a new playground at Taku Lake Park.

**Upgrades to Facilities:** Upgrades to existing facilities and investments in new facilities to support existing uses were identified as a community priority.

**Restoration of Natural Areas:** Management of natural resources including the restoration of damaged riparian areas, eroded streambanks, and the removal of invasive species were identified as a high priority.

**Access to Taku Lake and Campbell Creek:** Community members wish to maintain access to Taku Lake and Campbell Creek but in a manner that does not damage or negatively impact habitat.

**Continued Maintenance and Trail Improvements:** The community strongly supports trails at Taku Lake Park and wishes to see continued investments in trail upgrades and maintenance to support year-round recreation.

**More Opportunities for Winter Recreation:** Community members would like to use Taku Lake Park more in the winter and have identified the possibility of the lake being used for ice skating.

**Address Conflicts between Trail and Park Users:** Many community members identified areas of congestion and conflict on the Campbell Creek Trail in Taku Lake Park, particularly when dogs are off leash, and wish to find solutions to improve overall safety.

## THE MASTER PLAN

The *Taku Lake Park Master Plan* provides a 20-year vision for the management, maintenance and development of the park. The plan is the product of extensive public engagement and collaboration with local stakeholders. **It embodies the community's vision to provide active and healthy year-round recreational opportunities while preserving important natural resources for future generations.**

***Community Vision:** "Taku Lake Park is a safe, outdoor recreation destination that balances its natural green space and accessible waterways with a variety of unique, year-round activities for people of all ages and abilities, providing the community a natural oasis within the context of residential, commercial and industrial development."*

## CORE VALUES

The planning process revealed a number of themes in which there was general agreement among members of the public regarding the qualities that make Taku Lake Park special. These qualities or core values guide the development of this master plan, providing a foundation by which recommendations are formulated.

- Celebrate Taku Lake and Campbell Creek
- A Park for All Ages and Abilities to Participate in Recreation Together
- Maintain Taku Lake Park as a "Natural Oasis"
- Improve Access, Visibility And Connections into the Park
- Maintain a Balance of Developed Facilities and Natural Areas
- A Safe, Clean and Well Maintained Park
- Invest in Taku Lake Park for the Future







## RECOMMENDATIONS

The *Taku Lake Park Master Plan* includes recommendations that provide a framework for the future management and development of the park. These recommendations utilize best practices to resolve issues and concerns, and are intended to accomplish the long-term community vision for the Taku Lake Park. Recommendations are organized by the following four (4) Use Areas: North Gateway, South Gateway, Campbell Creek Stream Corridor, and the Core Area.

### The North Gateway

The North Gateway is a welcoming, year-round destination with convenient access to developed facilities, natural amenities, and the trail system. The area supports recreation along Campbell Creek and Taku Lake, provides a hub for activities and community events, and serves as a jumping off point for the Campbell Creek Trail. The North Gateway should invite, orient, and encourage visitors to explore further into the park and provide easily accessible activities to engage visitors of all abilities.



**North Gateway**

#### *North Gateway Access and Circulation*

- Consider circulation patterns and types of uses in defining pathways to minimize user conflicts
- Construct trails to support use of developed facilities and natural areas within the North Gateway area
- Install directional signage and wayfinding to direct park users to facilities and points of interest
- Provide lighting to improve safety and user experience

#### *North Gateway Parking Lot*

- Expand parking by approximately 20 spaces and improve internal circulation
- Provide lighting and landscaping as per Title 21 requirements
- Maintain clear lines of sight in and around the parking lot to deter negative/illegal activity
- Utilize existing raingarden to manage stormwater runoff
- Maintain access gates for utility corridor, park maintenance, and emergency vehicle access

#### *Raingarden*

- Monitor and manage vegetation and sediment deposits in the raingarden to maintain stormwater runoff treatment capacity
- Evaluate existing capacity and develop additional LID improvements to accommodate stormwater from future development
- Maintain and upgrade interpretive and educational elements describing the function, design and importance of LID stormwater management practices

#### *North Gateway Pavilion and Restroom Facility*

- Construct a new pavilion with lighting to support community use and events
- Develop a permanent restroom facility, or portable toilet facilities with a decorative screen fence, if a permanent facility is not feasible
- Provide access to electrical outlets to support community events
- Provide amenities such as picnic tables, benches, trash cans, grills and hot coal bins to support use
- Provide ADA accessible pathways and access
- Incorporate area lighting and maintain clear lines of sight to discourage misuse and vandalism

#### *Taku Lake ADA Fishing Access Steps and Launch*

- Provide a gradual, hardened lake shore ADA access point at the north end of Taku Lake to support recreation and maintenance

- Provide a year-round shoreline destination that is easily accessible from the parking lot
- Design and incorporate shoreline hardening that appears and feels natural, and is characteristic of natural/local materials
- Present varying levels of access for users of all ages and abilities by incorporating a series of gradual steps or similar approach into the water
- Consider circulation and other area uses in the design process to minimize user conflicts

#### *Taku Lake Overlook Deck*

- Provide an elevated all-seasons overlook deck to support a variety of uses and minimize erosion
- Maintain and expand ADA accessible pedestrian connections to overlook deck
- Provide opportunities for elevated and ADA accessible fishing points
- Provide amenities to support use such as benches, trash cans, signage, and wayfinding
- Rehabilitate damaged shoreline areas utilizing Best Management Practices (BMPs)
- Consider hand rail or barrier design solutions that allow for maximum visibility and deter future erosion from exploration beyond the deck edge
- Incorporate designs or art features to provide visual interest that are cohesive with the natural aesthetic of the park

#### **Campbell Creek Stream Corridor**

The Campbell Creek Stream Corridor is an important recreation destination and natural area offering a quiet and intimate experience in nature that changes with the seasons. The undeveloped portions of the corridor are desired to remain a highly naturalized environment, with very limited development. The master plan recommends limited development to support current and anticipated uses such as boating, fishing, and wildlife viewing. No development is recommended to occur north or west of the stream.

#### *Campbell Creek Access and Circulation*

- Develop a soft surface trail within the Campbell Creek stream corridor to facilitate access to recreation and natural resources
- Provide an ADA accessible path to the elevated light-penetrating platform on Campbell Creek
- Install directional signage and wayfinding to direct trail users to destinations, minimizing the creation of social trails and potential for future trampling
- Install interpretive information to increase public awareness of important natural resources including local fish and wildlife

- Monitor and manage public use of the natural areas to minimize any potential negative impacts to fish and wildlife habitat

#### *Campbell Creek Primitive Fishing Access and Launch*

- Work with stakeholders and partner organizations such as ADF&G to identify an appropriate location for primitive fishing access and launch
- Provide a formal soft surface path to the designated access point
- Install regulatory and interpretive information to increase public awareness of important natural resources and local fish and wildlife
- Re-vegetate social trails and rehabilitate streambanks to enhance riparian habitat and improve water quality
- Monitor and manage public use of the natural areas to minimize the potential impacts to stream banks, riparian areas, and important fish and wildlife habitat

#### *Habitat and Natural Resource Management*

- Conserve and manage the Campbell Creek stream corridor as a valuable riparian stream corridor
- Partner with agencies and organizations to implement streambank habitat restoration projects to improve the overall health of Campbell Creek
- Utilize the latest BMPs for design and construction along streambanks and within the stream corridor
- Re-vegetate social trails within the stream corridor to enhance riparian habitat and water quality
- Re-vegetate eroded shoreline areas to enhance water quality and fish habitat
- Monitor and manage public access and use within the stream corridor to mitigate any negative impacts to fish and wildlife habitat
- Provide educational and interpretive features to engage users and highlight the value of the Campbell Creek stream corridor
- Remove invasive species such as European Bird Cherry (*Prunus padus*) to support native forest health

#### *Campbell Creek ADA Fish Platform*

- Install an ADA accessible elevated light penetrating platform along Campbell Creek to facilitate wildlife viewing and fishing
- Utilize best management practices and partner organization knowledge to identify an appropriate location for the fish platform
- Install interpretive information to increase public awareness of important natural resources and local fish and wildlife
- Monitor and manage public use of the platform area to minimize any potential negative impacts to fish and wildlife habitat



## Core Area

The Core Area is the heart of Taku Lake Park and includes a variety of trail experiences and opportunities for recreation. The Core Area is defined by Taku Lake and the Campbell Creek Trail and includes the popular lake loop trail. The master plan does not propose any major changes to the Core Area as public input strongly supports maintenance and management of existing facilities and natural areas. The master plan does propose upgrades to trails and the reconstruction of a lakeside fishing platform.

### *Core Area Access and Circulation*

- Widen the Campbell Creek Trail through the park to minimize congestion and better accommodate multiple modes of travel
- Consider developing soft surface shoulders along the Campbell Creek Trail to separate fast and slow moving traffic, and provide a surface for jogging
- Extend the Lake Loop Trail to the west to provide a continuous walking loop separate from the Campbell Creek Trail
- Provide directional signage and wayfinding at key trail intersections to help visitors safely navigate the park
- Selectively thin vegetation along the trails to improve visibility and safety
- Provide additional lighting in high-use areas and intersections for added visibility and safety

### *Campbell Creek Trail*

- Widen the Campbell Creek Trail through the park to minimize congestion and better accommodate multiple modes of travel
- Consider developing soft surface shoulders along the Campbell Creek Trail to separate slower moving traffic and provide added recreational benefit
- Modify trail alignments at sharp bends to minimize cut-through and to improve safety at trail intersections and in areas with limited visibility
- Provide additional lighting in high-use areas and intersections for added visibility and safety
- Provide signage and wayfinding at key trail intersections to help visitors safely navigate the park
- Improve grading and drainage to increase the long-term durability of the trail
- Monitor changing trends in trail use to better understand user needs and better serve the public
- Maintain the trail as a year-round recreation asset
- Consider AWWU access and P&R maintenance needs in the planning and development of future improvements within the trail corridor

#### *Lake Loop Trail*

- Maintain the trail surface to ADA accessibility standards to the greatest extent feasible
- Extend the Lake Loop Trail to the west to provide a continuous walking loop separate from the Campbell Creek Trail
- Provide directional signage and wayfinding at key trail intersections to help visitors safely navigate the park
- Selectively thin vegetation along the trail to improve visibility and safety
- Consider pedestrian level lighting on the eastern section of the Lake Loop to support year-round recreation

#### *Pavilion and Open Lawn*

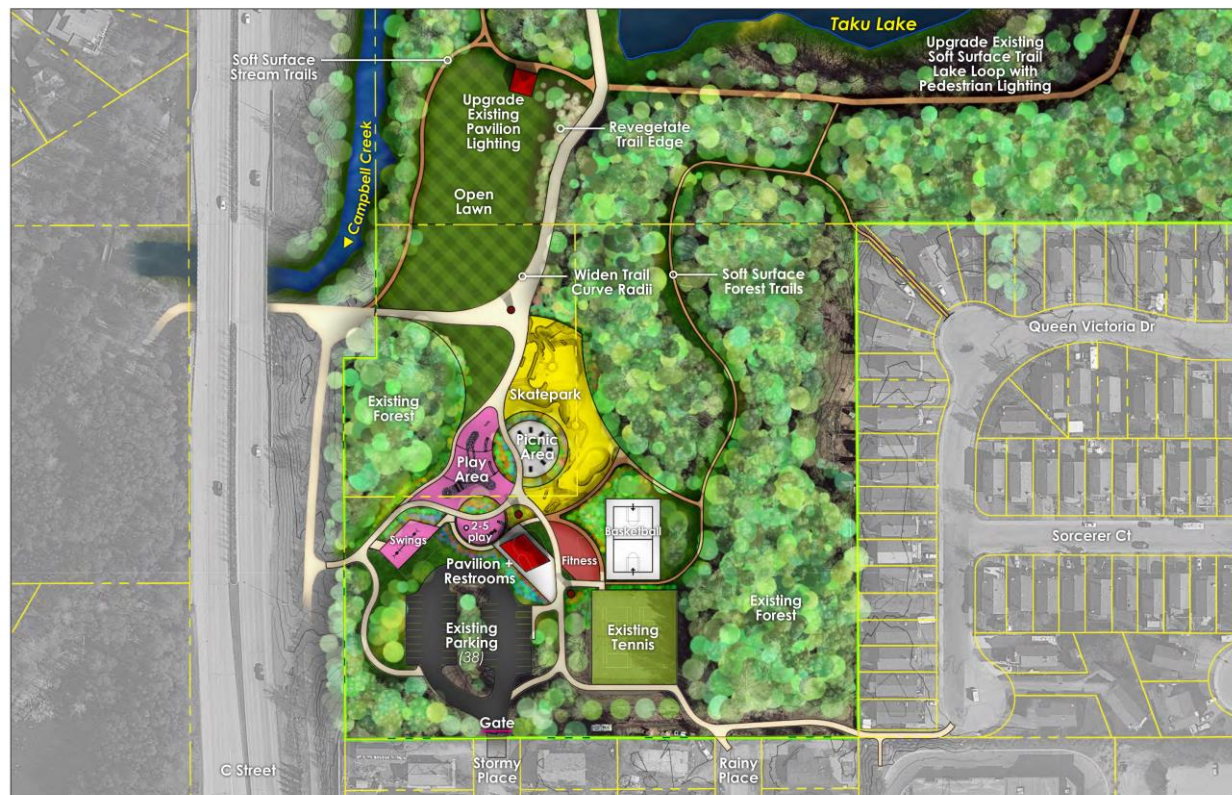
- Repair and paint worn, damaged and vandalized surfaces and features of the pavilion
- Install additional amenities such as picnic tables, trash cans, and hot coal bins to improve user experience
- Install LED vandal-resistant lighting to improve security and visibility during dark periods
- Selectively thin nearby vegetation to improve visibility
- Expand the open lawn to the south of the Campbell Creek Trail to strengthen the connection between developed facilities and invite visitors further into the park
- Add landscaping to areas along the Campbell Creek Trail to eliminate cut-through traffic and better define the open lawn and pavilion as a unique destination

#### *Taku Lake Fishing Platform*

- Work with agency and organizational partners to install an ADA accessible elevated light-penetrating fishing platform
- Revegetate heavily disturbed shoreline areas surrounding the platform to discourage shoreline water access and to improve water quality
- Provide regulatory signage and interpretive information to educate and inform the public about water quality, habitat, fish and wildlife, and recreation on Taku Lake
- Monitor public use of the lake and platform and adjust management strategies to address issues as they arise

## South Gateway

The South Gateway provides an active year-round recreation destination for individuals and families to gather, recreate, and socialize. The area extends from the parking lot to the south shore of Taku Lake and includes developed facilities, forested natural areas, open lawn and trails. The South Gateway is intended to be a gathering point, offering a range of highly desirable recreation for all ages and abilities in one easily accessible location. The area also serves to introduce visitors to a wider slate of potential recreational interests. The South Gateway area should welcome, orient, and encourage visitors to explore further into the park and provide a safe, natural and exciting place to gather and enjoy their favorite activities.



**South Gateway**

### *South Gateway Access and Circulation*

- Develop paved trails in concert with construction of new facilities to accommodate safe circulation
- Consider circulation patterns and types of uses in defining pathways to minimize user conflicts
- Resurface existing paved trails to eliminate heaves, splits and other damage
- Install directional signage and wayfinding to direct park users to facilities and use areas
- Provide additional lighting to improve safety and user experience

- Consider modifications to the inside radius of the Campbell Creek Trail-South Gateway spur trail intersection to provide better visibility and a safer intersection for bicyclists and pedestrians
- Resurface neighborhood-park trail access from Rainy Place, Stormy Place and Queen Victoria Drive

#### *South Gateway Parking Lot*

- Perform routine maintenance to the asphalt and adjacent areas and resurface as needed
- Continue to manage the existing parking lot as a year-round facility
- Install an access control gate to minimize after-hours activity in the park
- Incorporate area lighting improvements as electrical systems are updated and expanded to accommodate nearby site development

#### *South Gateway Pavilion and Restroom Facility*

- Construct a lighted pavilion with unique architectural features and fitting within the natural aesthetic of the park, that is visible and easily accessible from the parking area
- Develop a permanent restroom facility, or portable toilet facilities with a decorative screen fence, if a permanent facility is not feasible
- Provide electrical outlets to support community events
- Provide amenities such as picnic tables, benches, trash cans, grills and hot coal bins to support use Provide ADA accessible pathways and access
- Incorporate area lighting and maintain clear lines of sight from adjacent areas to discourage misuse and vandalism
- Install signage and wayfinding to help visitors navigate the park

#### *Play Area*

- Develop an inclusive play area in close proximity to complementary uses such as the central picnic area, pavilion and restroom, and parking area; and nearby other active recreation facilities such as tennis courts, skatepark and basketball court
- Utilize unitary surfacing that meets or exceeds ADA guidelines
- Maintain clear lines of sight into and through the play area to minimize hiding spaces, discourage vandalism, and allow for easy supervision and monitoring
- Install perimeter controls, such as fencing and/or landscaping, to improve child safety and supervision as well as prevent conflicts with other more active uses
- Work with partner organizations to identify, fund, and incorporate inclusive play features for all ages and abilities
- Incorporate public art or artful features to provide visual interest, increase ownership and offer playful expression within a public setting



### Skatepark

- Construct a permanent skatepark that is suitable for hosting small to medium sized events and can support a variety of skill levels
- Provide a mix of features for all levels of the skate community, organized to invite beginners and encourage skills development for more advanced riders
- Clearly define the skatepark area, considering spatial relationships to other use areas, to discourage users from expanding the skatepark beyond the intended use area
- Provide lighting, fencing, spectator areas, and amenities to encourage safe use and discourage negative activity
- Consider design features that may be covered or protected in the future to extend use during inclement weather
- Consider skate-able art by incorporating art features into the skatepark where possible to expand the function, interest, ownership and aesthetic of the skatepark
- Partner with businesses, organizations, and individual enthusiasts to fund, design, manage, program, and maintain the skatepark

### Central Picnic Area

- Provide a hardscaped picnic area with amenities to support use of area recreation facilities by individuals, families and groups
- Develop picnic area to provide a physical separation and transition between the skatepark and other recreation facilities to provide a safe buffer between various uses
- Incorporate lighting and clear lines of sight between the picnic area and nearby uses to encourage active supervision, discourage negative behavior, and improve safety
- Incorporate and include edible and ornamental landscape vegetation and/or public art features to provide a natural and aesthetically pleasing experience

### Fitness Area

- Update signage, repair damaged or worn features, and replace obsolete or unsafe equipment
- Provide additional equipment or selectively replace equipment to increase durability and usability
- Improve visibility and circulation within and around the fitness area to provide better access and awareness of its location and features
- Upgrade surfacing and remove vertical curbs to improve ADA accessibility within and around equipment
- Partner with businesses, organizations, and individual enthusiasts to modernize, program, and maintain the fitness area

#### *Basketball Court*

- Construct a single, full size basketball court with asphalt pavement and official striping
- Provide basic amenities such as seating and trash cans to support active and continuous use
- Install containment fencing, as appropriate, to reduce conflicts with adjacent uses and prevent rolling of basketballs into areas where retrieval is difficult
- Provide seasonal maintenance of the court to remove debris and seal asphalt periodically to ensure long-term use

#### *Tennis Courts*

- Perform routine and seasonal maintenance to ensure long-term viability of the tennis courts
- Resurface and re-stripe the tennis courts when routine maintenance no longer supports quality play
- Partner with the organizations such as the Alaska Tennis Association to conduct outreach, increase programming, and fund and execute minor improvements of the tennis courts

#### *Nature Trail*

- Develop a new soft-surface nature trail in the forested area south of Taku Lake and east of the South Gateway facilities to provide additional opportunities for recreation

### **General Park Considerations**

#### *Trails*

- Upgrade existing paved multi-use trails to support new development and improve overall circulation
- Develop new soft surface trails to improve circulation, link facilities, and provide new opportunities for recreation while reducing trampling, erosion, and damage to sensitive habitat areas
- Develop trails in accordance with stream protection setbacks as required by Anchorage Municipal Code Title 21 Land Use Code
- Construct soft surface trails to meet accessibility requirements to the greatest extent practicable
- Re-vegetate existing social trails within the Campbell Creek Stream Corridor once soft surface trails are formalized to minimize further trampling and erosion
- Maintain existing mature vegetation along trails to the extent practicable while selectively pruning and thinning to improve safety and visibility
- Engage community partners and volunteers to fundraise and build soft surface trails

- Provide wayfinding throughout the park to improve safety, orient visitors, and encourage further explorations into the park

#### *Signage and Wayfinding*

- Implement a wayfinding signage program with consistent themes, identity and sign hierarchy to help park and trail users locate activity areas and points of interest
- Install distance markers along secondary trails to support the wayfinding program, encourage healthy exercise and physical training, and provide a point of reference in case of emergency
- Provide interpretive information to increase public awareness of important natural resources and local fish and wildlife
- Install kiosks with park rules signs at access points and locations where specific uses require additional rules or regulations

#### *Amenities*

- Add the following amenities should be provided at appropriate locations within Taku Lake Park:
  - Benches and seating
  - Picnic tables
  - Bear-proof trash cans
  - Dog waste stations
  - Rules and regulatory signage
  - Wayfinding and information kiosks
  - Interpretive information
  - Bicycle racks
  - Monofilament fishing line and lure waste receptacles

#### *Landscaping and Vegetation Management*

- Prioritize the preservation and enhancement of existing native vegetation through best management practices to improve forest health
- Remove invasive species such as *Prunus padus* (European Bird Cherry or Mayday trees) to support native forest health
- Manage vegetation and thin brush along the periphery of activity areas and trail corridors to maintain clear lines of sight, improve safety and supervision, and prevent user or wildlife conflicts
- Maintain the vegetative buffer along the boundaries of the park to retain the character and attraction of the park
- Install landscape plantings compatible with adjacent uses; such as play areas, trails, streambanks and shorelines
- Design landscape areas to be easily maintained by volunteers and the Parks and Recreation Department

#### Public Art

- Identify and engage local, state, and national agencies and organizations as partners to initiate public art projects, identify funding opportunities, and provide technical support
- Encourage local and multi-cultural artist participation in public art projects within the park
- Consider educational, interpretive, or environmental art features to engage and educate users about natural resources and wildlife within the park
- Develop criteria for evaluating public art projects and outline the process for public involvement and approvals

#### Utilities

- Expand trail lighting consistent with MOA standards for fixtures and poles at heights appropriate in scale and character for intended use
- Upgrade and install LED lighting fixtures to minimize long-term maintenance and operations costs
- Utilize lighting that minimizes light pollution into adjacent residential areas
- Consider lighting for use in design features or for specific uses on site, such as the skatepark, pavilions, or play area
- Consider providing power with protected, lockable and weatherproof covers in high use areas of the park such as the skatepark and pavilions to support events
- Coordinate sanitary sewer and water service tie-in locations and installation with AWWU



### *Stormwater Management*

- Partner with MOA Watershed Management to identify, prioritize and fund Green Infrastructure projects to treat stormwater runoff from new development
- Maintain interpretive and educational signage at the existing raingarden describing the benefits of Green
- Infrastructure and watershed health
- Monitor and evaluate stormwater management systems to proactively address stormwater runoff challenges or system failures

## STAFF RECOMMENDATION

The Anchorage Parks and Recreation Department recommends approval of the *Taku Lake Park Master Plan*. The Master Plan is the product of extensive public outreach and engagement and with stakeholders and is supported by the Taku-Campbell Community Council.

The Department recommends that the Anchorage Parks and Recreation Commission pass the proposed resolution in support of the *Taku Lake Park Master Plan*.



**Municipality of Anchorage, Alaska**  
**Parks & Recreation Commission**

632 W. 6<sup>th</sup> Avenue, Suite 630  
P.O. Box 196650  
Anchorage, AK 99519  
**Tel** 907-343-4355

**URL** [www.muni.org/departments/parks](http://www.muni.org/departments/parks)



**PRC RES NO. 2018-09**  
**TAKU LAKE PARK MASTER PLAN**

WHEREAS, the Anchorage Parks and Recreation Commission serves in an advisory capacity to both the Mayor and the Assembly; and

WHEREAS, the Anchorage Parks and Recreation Commission has the responsibility and duty to provide for the long term vision of our park system by ensuring that a balance of parks, natural resources, and recreation facilities provides for the health, welfare, and safety of all residents of the Anchorage Bowl; and

WHEREAS, the most recent master plan for Taku Lake Park was completed in 1997 and upgrades are needed to address current issues and meet the demand for recreational facilities; and

WHEREAS, the proposed Taku Lake Park Master Plan provides a guiding vision for the management, maintenance and development of Taku Lake Park by aiming to balance recreational uses with the preservation of important natural resources; and

WHEREAS, the Anchorage Parks and Recreation Department worked with local stakeholders throughout the planning process to identify and prioritize improvements and to develop a 20-year vision for Taku Lake Park; and

WHEREAS, the Taku Lake Park Master Plan embodies the community's vision to provide active and healthy year-round recreational opportunities while preserving important natural resources for future generations; and

WHEREAS, the recommendations proposed in the Taku Lake Park Master Plan attempt to balance the diverse wants and needs of park users and are informed by best practices in recreation and natural resource management; and

WHEREAS, the Taku Lake Park Master Plan is supported by the Taku-Campbell Community Council; and

NOW, THEREFORE, BE IT RESOLVED that the Anchorage Parks and Recreation Commission approves the Taku Lake Park Master Plan as submitted by the Parks and Recreation Department.

PASSED AND APPROVED by the Anchorage Parks and Recreation Commission this 10th day of May, 2018.

---

Chair  
Parks and Recreation Commission

ATTEST:

---

John Rodda, Director  
Parks & Recreation Department