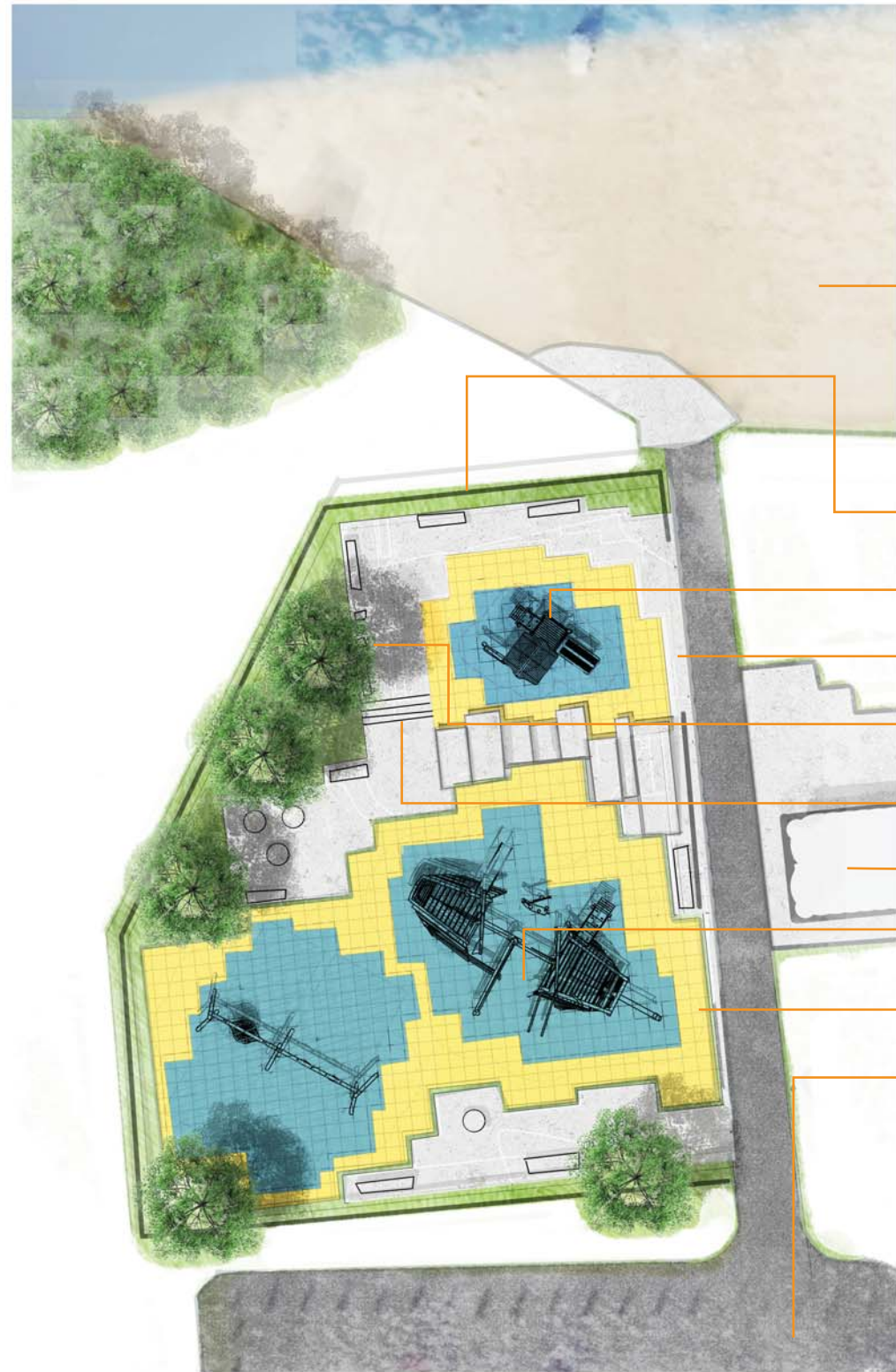
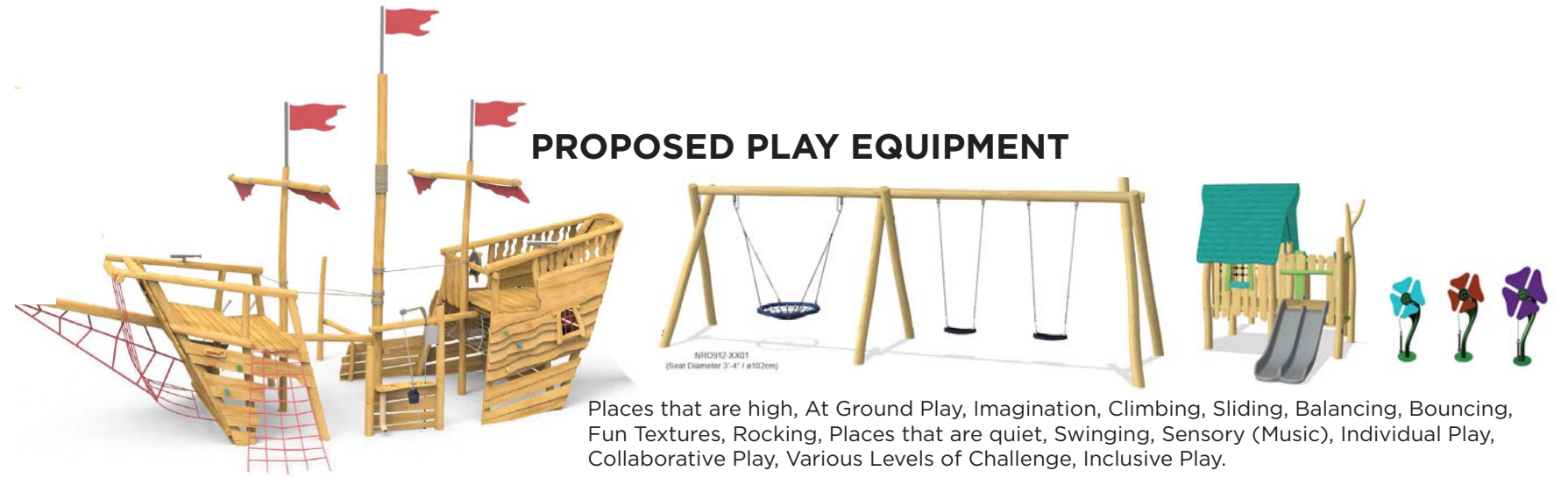


# PROPOSED SITE PLAN



- BEACH
- FENCE
- TOT LOT
- ENTRY TWO
- MUSICAL ELEMENT
- STAIRS
- PAVILION
- SCHOOL AGE
- ENTRY ONE
- PARKING LOT



## PROPOSED PLAY EQUIPMENT

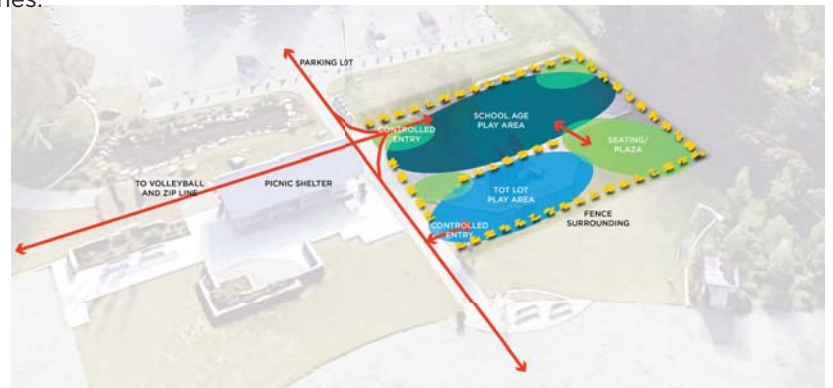
Places that are high, At Ground Play, Imagination, Climbing, Sliding, Balancing, Bouncing, Fun Textures, Rocking, Places that are quiet, Swinging, Sensory (Music), Individual Play, Collaborative Play, Various Levels of Challenge, Inclusive Play.



Youth Employment in Parks Soft Surface Trail Project. Would like to include interpretive signage that includes educational themes.



Rubber Tile/ Unitary surfacing.



Preferred Concept as discussed during Community Advisory Group Meeting Two.

