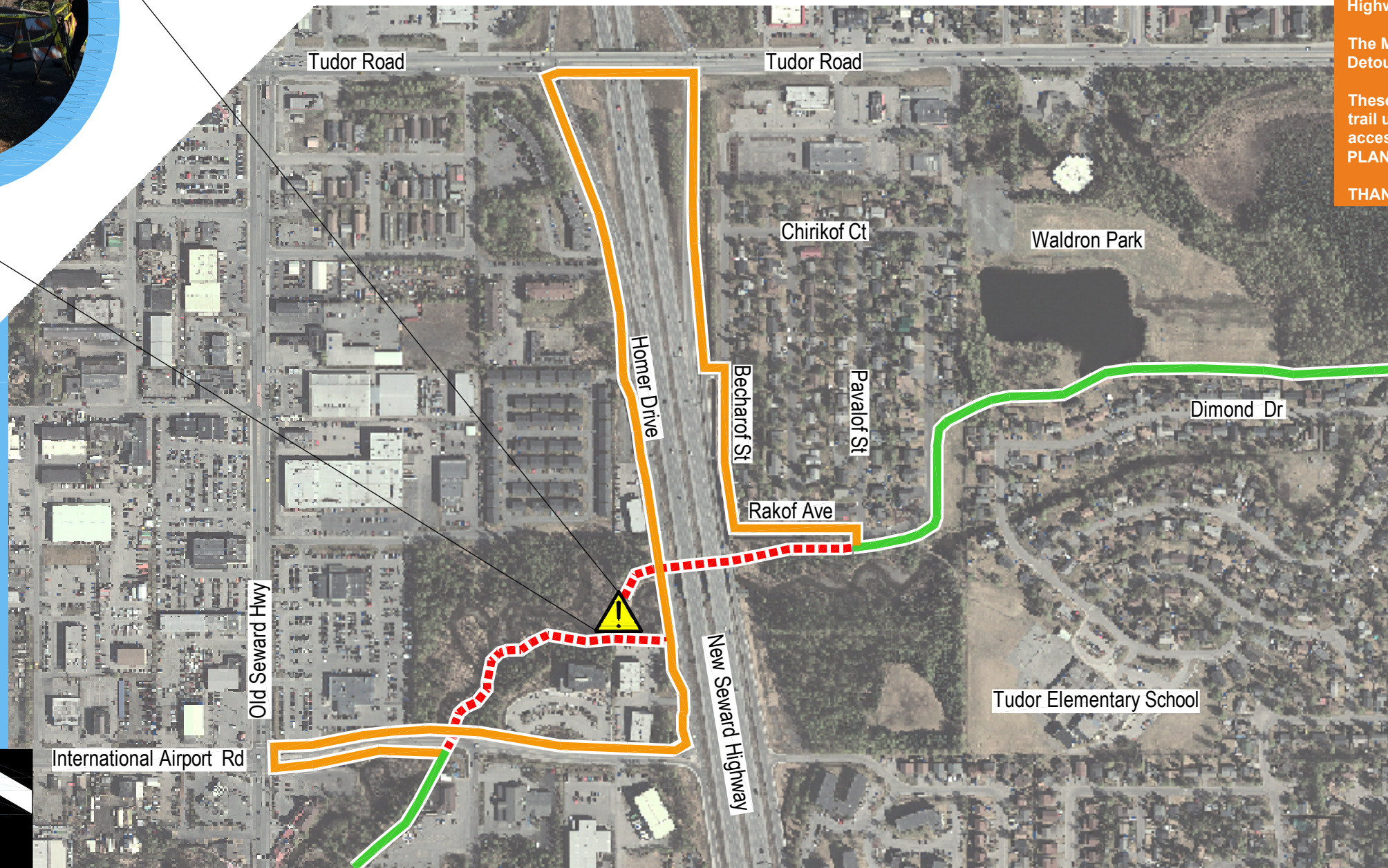


DETOUR INFORMATION



The Campbell Creek Trail is closed west of the New Seward Highway until the Trail Bridge is Replaced.




The Municipality Of Anchorage is working to replace this bridge. Detour route provided along Homer Dr. (Frontage Rd). SEE MAP.

These closures require variable detours. Message signs will direct trail users to suggested detour route for Campbell Creek Trail access.

PLAN YOUR TRIP ACCORDINGLY, TRAVEL TIME MAY INCREASE.

THANK YOU FOR YOUR PATIENCE!

LEGEND

-  CAMPBELL CREEK TRAIL
-  TRAIL CLOSURE
-  TRAIL DETOUR



CAMPBELL CREEK TRAIL BRIDGE CLOSURE

Contact the Municipality of Anchorage Parks & Recreation Department for questions: (907)-343-4355; Project Website and MAP LINKS:
<http://www.muni.org/Departments/parks/Pages/CampbellCreekTrailBridges.aspx>