

## Frontierland Park Community Advisory Group Meeting #3 Minutes

---

Location: Coffman Annex Building, 519 W. 8<sup>th</sup> Ave

Date: Tuesday, December 11<sup>th</sup>, 5:30-7pm

The third meeting of the Frontierland Park Community Advisory Group (CAG) was held at the Coffman Annex Building in downtown Anchorage on December 11<sup>th</sup>. The goal of the meeting was to summarize elements discussed in CAG meeting #1 and present park design, review play equipment and continue prioritizing improvements at the park. Parks and Recreation works with a CAG to ensure that future improvements align with the desires of the community.

### IN ATTENDANCE

- |                                    |  |
|------------------------------------|--|
| 1. Kurt Marsch (SACC)              | 4. Josh Durand (Parks and Recreation)        |
| 2. Cindy Edlund (SACC)             |  |
| 3. Ed Leonetti (Coffman Engineers) | 5. Michelle Fehribach (Parks and Recreation) |

### MEETING OVERVIEW

The meeting began with those in attendance introducing themselves and their connection to the project/neighborhood. Josh Durand provided a summary of the project to date, CAG meetings #1 and #2, and the outline of the agenda. This review included information on the role of the CAG, a project timeline, available funding, and project goals. Josh Durand explained that the delay in receiving the playground equipment and subsequent moving of construction until 2019 provided an opportunity to revisit the park design and hone it even further. Josh Durand also explained that after further engineering cost estimates, it does not save costs to keep the current playground footprint. This allows more flexibility in the park's design and circulation.

### CONCEPTUAL SITE DESIGN REVIEW AND DISCUSSION

The following section summarizes discussion points from the meeting. Generally, the CAG committee remains supportive of a new playground and upgrading existing amenities. The main points of discussion are categorized by amenity and/or topic. These include: Access points, theme, landscaping, fencing, play areas, lighting, seating & plaza.

#### **Access Points (*these points remain consistent from CAG #2*)**

- Discussion about four pedestrian access points

- Like South East access
- Lots of underground electrical on south side of substation
- The group would like to keep the parallel parking on the south side of W. 10<sup>th</sup> Ave, as they have observed parents watching their children play from their parked cars

**Theme (*these points remain consistent from CAG #2*)**

- Play Structures
  - Den'aina focused is a great idea.
  - Like the spruce tree/beluga example shown.
- Avoid "Teepee" design.
- Focus on local Den'ina cultural when integrating culture.

**Playground/Play Eqpt.**

- Concern about proximity of location of neighborhood to the west and the new playground
  - Prefer to keep the "louder" play equipment further away from the neighbors on the west.
- The engineering cost estimate determined it is not advantageous to keep the original footprint of the existing playground; therefore,
  - A new footprint will be created, and equipment will be more spaced out
  - The swings will move to their own separate play space on the eastern side of the park
  - Separating the swings from play equipment will reduce potential user conflicts
  - The 2-5 year old equipment and 5-12 year old equipment are still adjacent to each other, allowing parents to easily watch children of varying ages
- Lighting
  - Directional lighting to the north is preferred if needed
  - Light if necessary for safety
    - One at the sledding hill
    - One at the play area
  - Be cautious about over spray of light into neighborhood
- Benches – arm rest preferred as well as back benches
  - Idea is to prevent sleeping on benches and advocate for sitting
- Prefer turf for safety surface rather than other impact attenuating surfaces

- The sledding hill design has been simplified to leave the hill mostly as is and just add a path around the eastern side that leads to the slide at the top of the hill

#### Landscaping *(these points remain consistent from CAG #2)*

- Maintain/keep existing trees in South West corner of site along property line
- Grove of trees is a good buffer to adjacent street
- Levels of foliage add to character
- Like idea about grass intergraded into planting bed with trees

#### Seating & Plaza *(these points remain consistent from CAG #2)*

- Seat walls on North side of park adjacent to the play areas was a big hit. Lawn sloping from top of wall to sidewalk at 10<sup>th</sup> Ave. with trees to filter the edge of the park.
- Simplistic and open fencing to help contain playground users to the park
- Plaza with tables chairs as the central area was preferred.

#### Other

- Add Mutt Mitt stations to encourage good habits
- Upgrade benches and picnic tables
- Parks and Recreation maintenance clearing paths
- Parks and Recreation horticulture training birch trees

## RESOURCES

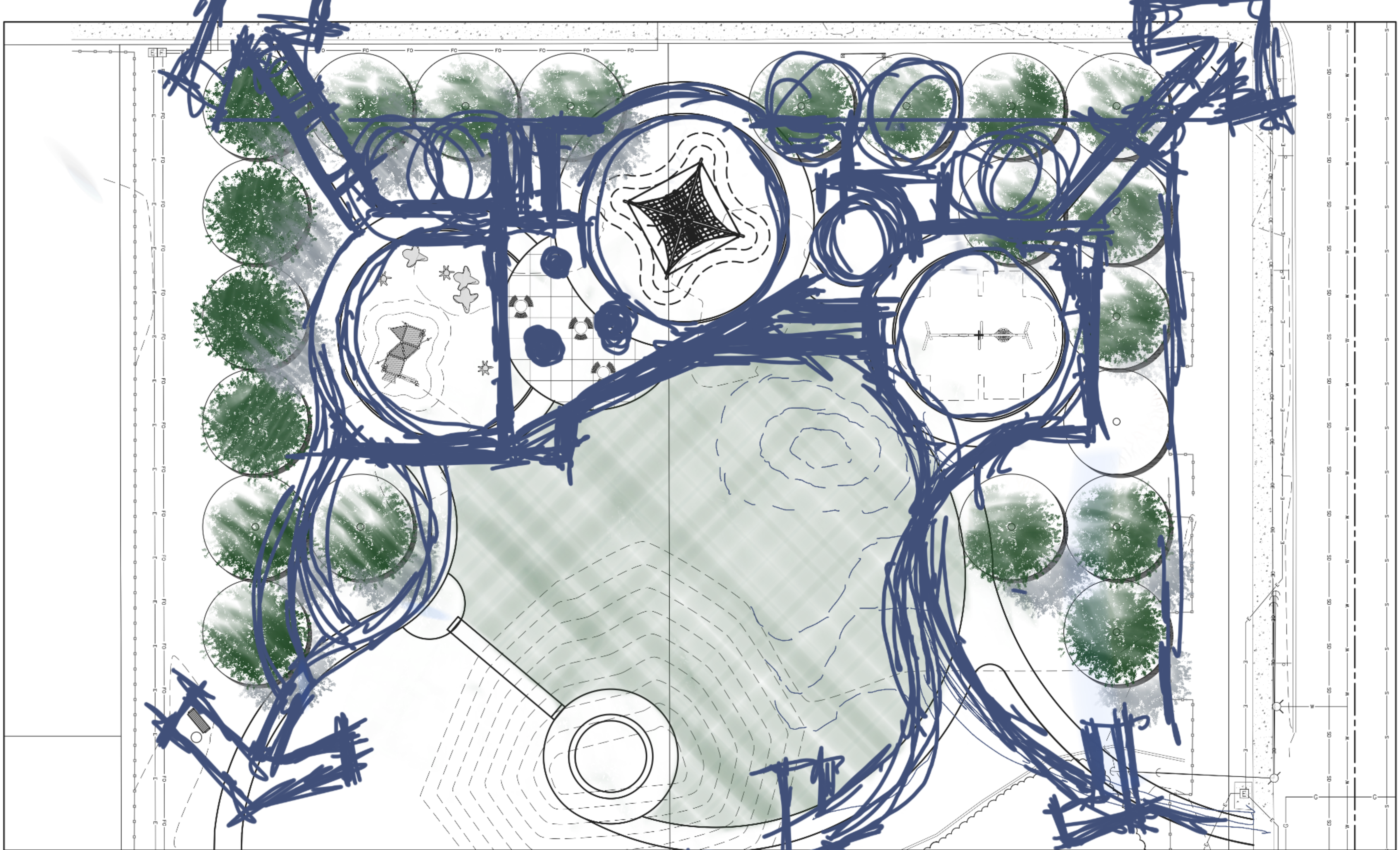
[Berliner](#)

[Kompan](#)

[Goric](#)

[Landscape Structures Inc](#)





# FrontierLand Park 2019 Improvements - Conceptual Plan

Anchorage Alaska 10.19.2018

