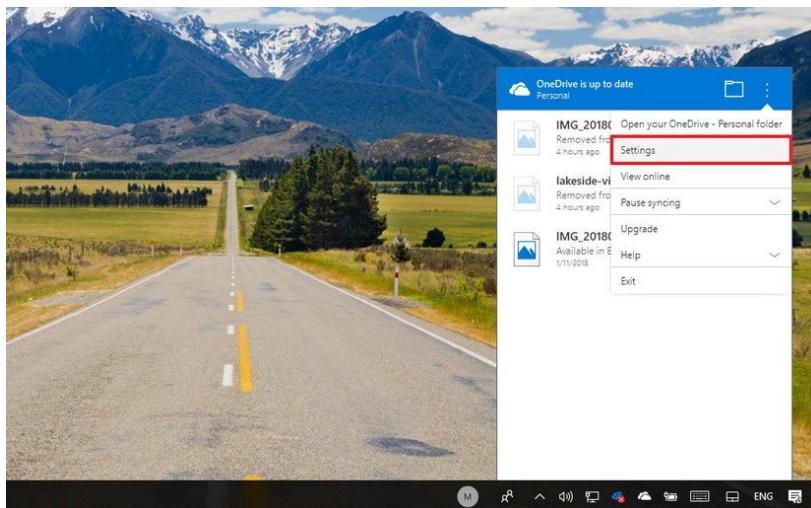


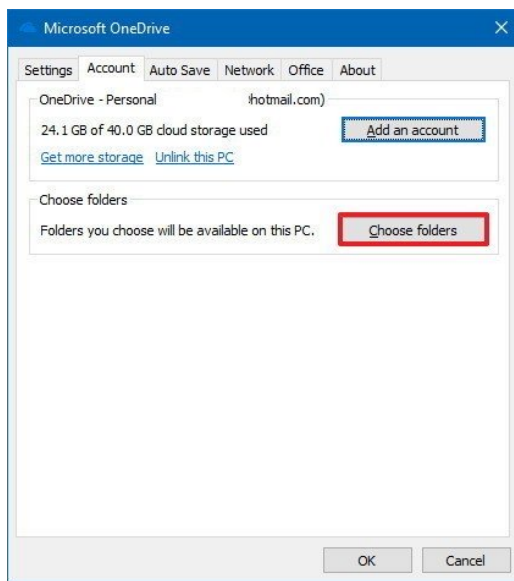
# How to choose which folders to sync from OneDrive

If you want to specify which folders stored in the cloud should be accessible from your computer, do the following:

1. Click the **cloud icon** in the notification area.
2. Click the **three-dotted** menu button in the top-right corner.
3. Click **Settings**.

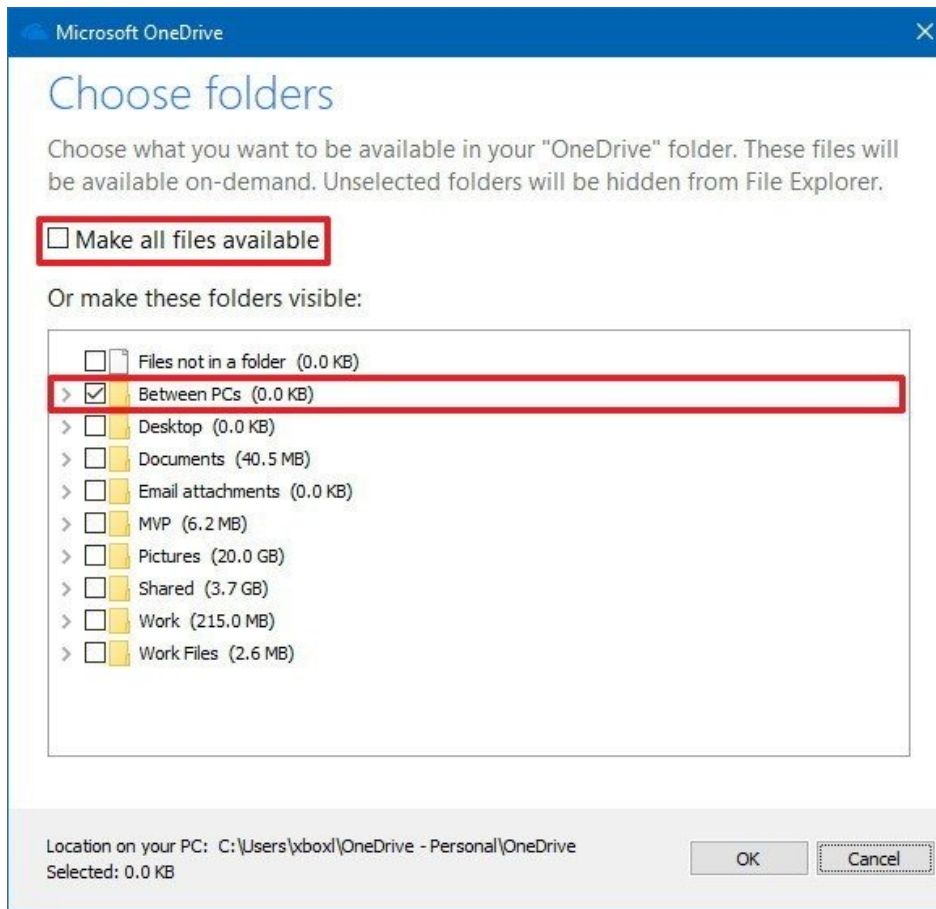


4. In the "Account" tab, click the **Choose folders** button.



5. Clear the **Make all files available** option.

6. Check the folders you want to make visible.
7. Click **OK**.



8. Click **OK** again.

Once you complete these steps, only the files and folders you specified will be visible from your device. However, you'll be able to [access](#) the content you didn't specify using the OneDrive experience on the web. And you can use the same instructions to add or remove content as needed.