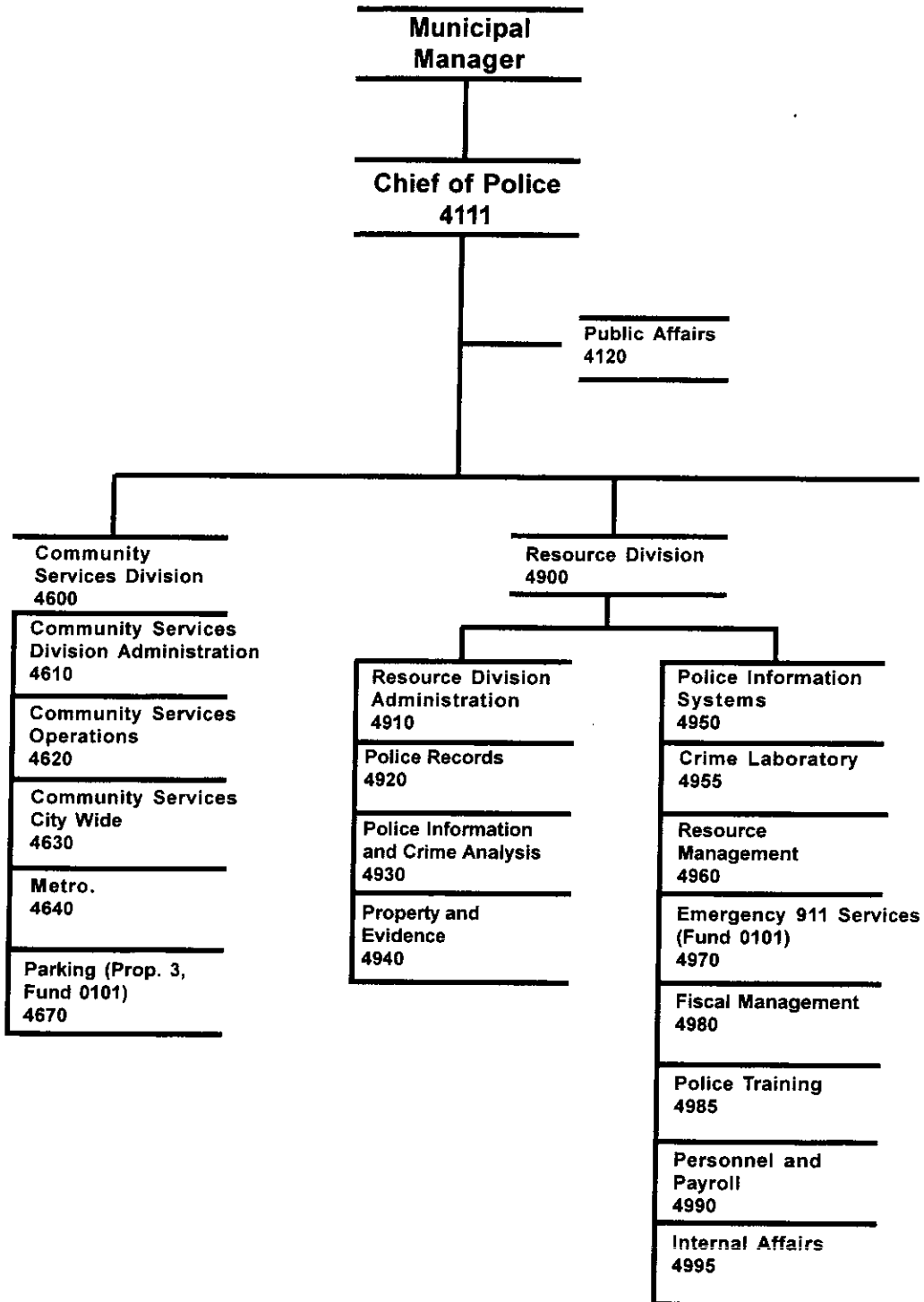




POLICE

POLICE



DEPARTMENT SUMMARY

Department POLICE

Mission

To deliver police services in the most effective, responsive, and professional manner possible; to protect lives and property; to prevent crime and maintain order; and, to enforce the law impartially with due regard for the constitutional rights of all citizens.

Major Program Highlights

- Maintain the downward trend in serious crime by combining traditional enforcement with proactive methods and innovative problem solving through Community Based Policing.
- Increase the authorized strength for sworn officers to 370 (15 new positions) and include the appropriate support staff.
- Employ new technologies to extract additional potential from existing resources.
- Direct the focus of new resources toward quality of life issues.
- Continue the program of integrating the patrol and detective functions on a geographic basis and improve recent efforts to base priorities and strategies on district-specific issues.
- Enhance bike patrols, agency partnerships, and crime prevention activities.
- Improve media relations and communication.
- Maintain a working alliance with Federal and State agencies in order to target major drug suppliers and users.
- Further the development of Crime Analysis to support officers in their efforts to eliminate the causes of crime in each neighborhood, and to help more effectively manage resources.

RESOURCES

	1999	2000
Direct Costs	\$ 47,450,720	\$ 45,903,900
Program Revenues	\$ 5,802,700	\$ 6,730,200
Personnel	523FT	529FT
Grant Budget	\$ 1,184,589	\$ 1,314,231
Grant Personnel	6FT	15FT

2000 RESOURCE PLAN

DEPARTMENT: POLICE

DIVISION	FINANCIAL SUMMARY		PERSONNEL SUMMARY			
	1999 REVISED	2000 BUDGET	1999 REVISED		2000 BUDGET	
			FT	PT	T	TOTAL
CHIEF OF POLICE	888,940	989,780	11			11
COMMUNITY SERVICES DIV	29,030,860	28,204,960	344			344
RESOURCE DIVISION	16,641,170	15,792,130	174			174
COMMUNITY SVCS DIV-101	281,180	281,180				
OPERATING COST	46,842,150	45,268,050	529*			529*
ADD DEBT SERVICE	608,570	635,850				
DIRECT ORGANIZATION COST	47,450,720	45,903,900				
ADD INTRAGOVERNMENTAL CHARGES FROM OTHERS	14,468,680	13,991,630				
TOTAL DEPARTMENT COST	61,919,400	59,895,530				
LESS INTRAGOVERNMENTAL CHARGES TO OTHERS	2,628,970	2,667,190				
FUNCTION COST	59,290,430	57,228,340				
LESS PROGRAM REVENUES	5,802,700	6,730,200				
NET PROGRAM COST	53,487,730	50,498,140				

	1999	2000
Operating Budget	523	529
Grants	6	15
Total	529	544

2000 RESOURCES BY CATEGORY OF EXPENSE

DIVISION	PERSONAL SERVICES	SUPPLIES	OTHER SERVICES	CAPITAL OUTLAY	TOTAL DIRECT COST
CHIEF OF POLICE	863,940	35,400	85,640	4,800	989,780
COMMUNITY SERVICES DIV	28,377,680	126,250	549,550 **	73,370	29,126,850
RESOURCE DIVISION	10,696,060	503,700	4,550,960	124,820	15,875,540
COMMUNITY SVCS DIV-101			281,180		281,180
DEPT. TOTAL WITHOUT DEBT SERVICE	39,937,680	665,350	5,467,330	202,990	46,273,350
LESS VACANCY FACTOR	1,005,300				1,005,300
ADD DEBT SERVICE					635,850
TOTAL DIRECT ORGANIZATION COST	38,932,380	665,350	5,467,330	202,990	45,903,900

** Includes \$137,140 as a match to a federal grant for 15 new police officers to be added in November, 2000 and related support costs.

RECONCILIATION FROM 1999 REVISED BUDGET TO 2000 MAYOR'S BUDGET

DEPARTMENT: POLICE

	DIRECT COSTS	POSITIONS		
		FT	PT	T
1999 REVISED BUDGET:	\$ 47,450,720	529	*	
1999 ONE-TIME REQUIREMENTS:				
- Legal Services for Gallion case	(18,900)			
AMOUNT REQUIRED TO CONTINUE EXISTING PROGRAMS IN 2000:				
- Salaries and benefits adjustment	422,810			
TRANSFERS TO/FROM OTHER DEPARTMENTS:				
- To MISD for new/increased communication service	(2,080)			
- From Public Works for impound towing contract	35,000			
MISCELLANEOUS INCREASES/(DECREASES):				
- Increase in voter approved debt service	27,310			
- Funding returned to capital for MDT's due to Federal supplanting issue	(1,000,000)			
- 15 new officer positions and support costs, including 15 vehicles, based on preliminary budget development plan to start police academy in December 1999/January 2000. See Budget Reductions and New/Expanded Service Levels sections below for final Mayor's Budget plan.	1,564,140	15		
- Police/Fire retiree medical contribution decrease	(402,390)			
1999 CONTINUATION LEVEL:	48,076,610	544 FT	0 PT	0 T
BUDGET REDUCTIONS:				
- <i>General reductions from staffing efficiencies and decreases in travel and contractual services</i>	(651,250)			
- <i>Direct cost increase for pre-Academy Parking Enforcement program. (will increase parking fines revenues by \$369,000)</i>	43,290			
- <i>15 new officer positions and support costs, including 15 vehicles, based on preliminary budget development plan to start police academy in December 1999/January 2000. See New/Expanded Service Levels sections below for final Mayor's Budget plan.</i>	(1,564,140)	(15)		
- <i>Termination of PLIMS computer system costs</i>	(137,750)			

(continued on next page)

RECONCILIATION FROM 1999 REVISED BUDGET TO 2000 MAYOR'S BUDGET

DEPARTMENT: POLICE

	<u>DIRECT COSTS</u>	<u>POSITIONS</u>		
		FT	PT	T
NEW/EXPANDED SERVICE LEVELS:				
- 15 new police officers partially funded by a new Federal COPS Hiring Grant with a Police Academy starting in November 2000. Existing state grant funds will be used to purchase the 15 police vehicles.	137,140	15	**	
2000 MAYOR'S BUDGET:	<u>\$ 45,903,900</u>	<u>544 FT **</u>	<u>0 PT</u>	<u>0 T</u>

* Includes 6 partially federally funded grant positions; does not include 15 new positions for which funding was subsequently deleted due to Federal grant supplanting issues.

** Includes 15 partially federally funded grant positions.

2000 P R O G R A M P L A N

DEPARTMENT: POLICE
PROGRAM: Police Administration

DIVISION: CHIEF OF POLICE

PURPOSE:

To deliver police services in the most effective, responsive, professional manner possible; to protect lives and property; to prevent crime and maintain order; and to enforce the law impartially with due regard for all citizens' constitutional rights.

1999 PERFORMANCES:

- Supported the downward trend in measurable serious crime through continued traditional enforcement efforts.
- Supplemented traditional reactive measures with proactive, innovative problem-solving operations aimed at reducing fear of crime (in addition to actual crime.)
- Employed technology and innovation to extract additional potential from existing authorized strength, and to then direct newly derived resources toward quality-of-life crimes and issues.
- Assigned an integrated patrol and detective structure to geographic subsections of Anchorage, and then based police priorities and strategies largely on district specific issues.
- Continued bike patrols, agency partnerships, and crime prevention activities similar to those in 1998.

2000 PERFORMANCE OBJECTIVES:

- Support the downward trend in measurable serious crime through continued traditional enforcement efforts.
- Supplement traditional reactive measures with proactive, innovative problem-solving operations aimed at reducing fear of crime and actual crime.
- Employ technology and innovation to extract additional potential from existing authorized strength, and to then direct newly derived resources toward quality-of-life crimes and issues.
- Assign an integrated patrol and detective structure to geographic subsections of Anchorage, and then base police priorities and strategies largely on district specific issues.
- Continue bike patrols, agency partnerships, and crime prevention focus.

2000 P R O G R A M P L A N

DEPARTMENT: POLICE
 PROGRAM: Police Administration
 RESOURCES:

DIVISION: CHIEF OF POLICE

	1998 REVISED			1999 REVISED			2000 BUDGET		
	FT	PT	T	FT	PT	T	FT	PT	T
PERSONNEL:	4	0	0	6	0	0	6	0	0
PERSONAL SERVICES	\$	314,700		\$	423,560		\$	514,220	
SUPPLIES		23,420			23,420			23,430	
OTHER SERVICES		7,700			7,700			7,720	
CAPITAL OUTLAY		1,400			1,400			1,400	
TOTAL DIRECT COST:	\$	347,220		\$	456,080		\$	546,770	
WORK MEASURES:									
- Increase proactive police time (in %)		12			20			20	
- Department-wide filled staffing level (in %)		97			99			99	
- Department-wide long-term sick/injured/light duty rate (in %)		4			3			3	

89 SERVICE LEVELS ARE FUNDED FOR THE DEPARTMENT. THIS PROGRAM HAS LEVELS:
 1, 62

2000 P R O G R A M P L A N

DEPARTMENT: POLICE
PROGRAM: Crime Prevention

DIVISION: CHIEF OF POLICE

PURPOSE:

To prevent crime through public awareness and education, to provide the news media with specific facts pertaining to crimes and police operations and with general information on the workings of the department, and to actively promote the image of the police department through proactive means.

1999 PERFORMANCES:

- Supported the implementation of Community Oriented Policing by preparing informative public presentations for delivery by the Chief of Police.
- Improved the public image of the department utilizing principles of marketing.
- Enhanced the success of Chief of Police and his policies by fostering better and more frequent communication with the media.

2000 PERFORMANCE OBJECTIVES:

- Support the implementation of Community Oriented Policing by preparing informative public presentations for delivery by the Chief of Police.
- Improve the public image of the department utilizing principles of marketing.
- Enhance the success of Chief of Police and his policies by fostering better and more frequent communication with the media.

RESOURCES:

	1998 REVISED			1999 REVISED			2000 BUDGET		
PERSONNEL:	FT	PT	T	FT	PT	T	FT	PT	T
	4	0	0	5	0	0	5	0	0
PERSONAL SERVICES	\$	353,910		\$	339,610		\$	349,720	
SUPPLIES		11,950			11,950			11,970	
OTHER SERVICES		77,900			77,900			77,920	
CAPITAL OUTLAY		3,400			3,400			3,400	
TOTAL DIRECT COST:	\$	447,160		\$	432,860		\$	443,010	

WORK MEASURES:

- | | | | |
|---|---|-----|-----|
| - Create new releases on a monthly basis | 0 | 144 | 144 |
| - Respond to demands from local media | 0 | 50 | 50 |
| - Quarterly meetings with Community Policing groups | 0 | 12 | 12 |
| - Public presentations on public safety issues | 0 | 110 | 110 |
| - Effective hotline tips received by the Crime Stopper's phone line | 0 | 25 | 25 |

89 SERVICE LEVELS ARE FUNDED FOR THE DEPARTMENT. THIS PROGRAM HAS LEVELS: 72, 73, 80

2000 P R O G R A M P L A N

DEPARTMENT: POLICE
PROGRAM: Metro

DIVISION: COMMUNITY SERVICES DIV

PURPOSE:

To plan and organize the investigation of crimes against persons and property and the trafficking of illicit drugs in order to apprehend and successfully prosecute criminal offenders. To provide investigative support to other enforcement sections of the Department.

1999 PERFORMANCES:

- Initiated 95% of all illegal drug sale investigations.
- Initiated 95% of all vice related investigations.
- Seized 1.3 million dollars worth of illegal drugs (street value).
- Coordinated drug investigations within APD and with Federal and State agencies.
- Provided assistance on at least 400 problems worked by other sections.
- Actively pursued State and/or Federal Grants to provide funding for special projects.
- Provided investigation for asset seizure cases.
- Coordinated with district commanders to identify and resolve illicit drug related problems on a district level.

2000 PERFORMANCE OBJECTIVES:

- Initiate 95% of all illegal drug sale investigations.
- Initiate 95% of all vice related investigations.
- Seize 1.3 million dollars worth of illegal drugs (street value).
- Coordinate drug investigations within APD and with Federal and State agencies.
- Provide assistance on at least 400 problems worked by other sections.
- Actively pursue State and/or Federal Grants to provide funding for special projects.
- Provide investigation for asset seizure cases.
- Coordinate with district commanders to identify and resolve illicit drug related problems on a district level.

2000 P R O G R A M P L A N

DEPARTMENT: POLICE
 PROGRAM: Metro
 RESOURCES:

DIVISION: COMMUNITY SERVICES DIV

	1998 REVISED			1999 REVISED			2000 BUDGET		
	FT	PT	T	FT	PT	T	FT	PT	T
PERSONNEL:	11	0	0	10	0	0	10	0	0
PERSONAL SERVICES				\$ 1,105,110			\$ 1,798,790		\$ 946,150
SUPPLIES				8,000			8,000		8,020
OTHER SERVICES				159,090			159,090		158,070
TOTAL DIRECT COST:				\$ 1,272,200			\$ 1,965,880		\$ 1,112,240
PROGRAM REVENUES:				\$ 125,500			\$ 125,500		\$ 125,500
WORK MEASURES:									
- Narcotics cases assigned			300			280			280
- Total drug charges			350			840			840
- Value of drug assets seized			20,000			20,010			20,010
- Value of drugs seized			900,000			1,300,000			1,300,000
- Total number of people arrested for drug-related offenses			200			420			420
- Total number of assists for other investigative sections			0			400			400

89 SERVICE LEVELS ARE FUNDED FOR THE DEPARTMENT. THIS PROGRAM HAS LEVELS:
 20, 21, 22, 23

2000 P R O G R A M P L A N

DEPARTMENT: POLICE
PROGRAM: Citywide Services

DIVISION: COMMUNITY SERVICES DIV

PURPOSE:

To plan and organize the investigation of crimes against persons and property in order to apprehend and successfully prosecute criminal offenders, to transport prisoners, to serve court paperwork and coordinate domestic violence cases.

1999 PERFORMANCES:

- Screened all homicide cases and actively investigated 100%.
- Screened 100% of all other deaths for possible criminal culpability.
- Screened all adult and child sexual assault cases and actively investigated 70%.
- Screened 100% of cases involving pawned items and actively investigated 35% of these cases in tandem with property crime investigators.
- Screened 100% of crimes against children cases and assigned to area commanders as appropriate.
- Screened and coordinated investigations of 90% of domestic violence cases
- Screened and actively investigated 100% of all fatal accidents.

2000 PERFORMANCE OBJECTIVES:

- Screen all homicide cases and actively investigate 100%.
- Screen 100% of all other deaths for possible criminal culpability.
- Screen all adult and child sexual assault cases and actively investigate 70%.
- Screen 100% of cases involving pawned items and actively investigate 35% of these cases in tandem with property crime investigators.
- Screen 100% of crimes against children cases and assign to area commanders as appropriate.
- Screen and coordinate investigations of 90% of domestic violence cases.
- Screen and actively investigate 100% of all fatal accidents.

2000 PROGRAM PLAN

DEPARTMENT: POLICE
 PROGRAM: Citywide Services
 RESOURCES:

DIVISION: COMMUNITY SERVICES DIV

	1998 REVISED			1999 REVISED			2000 BUDGET		
	FT	PT	T	FT	PT	T	FT	PT	T
PERSONNEL:	65	0	0	64	0	0	64	0	0
PERSONAL SERVICES	\$ 5,376,870			\$ 2,658,090			\$ 5,606,360		
SUPPLIES	12,600			12,600			12,620		
OTHER SERVICES	80,580			80,580			77,570		
DEBT SERVICE	12,290			0			0		
CAPITAL OUTLAY	23,370			23,370			23,370		
TOTAL DIRECT COST:	\$ 5,505,710			\$ 2,774,640			\$ 5,719,920		
PROGRAM REVENUES:	\$ 5,000			\$ 5,000			\$ 5,000		
WORK MEASURES:									
- Homicide cases assigned	26			27			27		
- Sexual assault cases assigned (adult and child)	700			770			770		
- Fatality accidents investigated	19			20			20		
- Prisoner Transports	8,618			9,048			9,048		
- Domestic violence protective orders served	1,072			527			527		
- Other court summons and paperwork served	2,087			2,191			2,191		
- Arrest warrants served	774			812			812		
- Collect, review, verify and correct pawn shop transaction reports	170,195			182,108			182,108		
- Identify individual items of stolen property in the pawn system.	992			1,061			1,061		
- Review and coordinate investigation of domestic violence reports	796			836			836		

89 SERVICE LEVELS ARE FUNDED FOR THE DEPARTMENT. THIS PROGRAM HAS LEVELS:
 8, 10, 11, 12, 13

2000 PROGRAM PLAN

DEPARTMENT: POLICE
PROGRAM: Community Services

DIVISION: COMMUNITY SERVICES DIV

PURPOSE:

To plan and implement strategies for the effective deployment of sworn officers to deliver both the traditional police services (keep the peace, protect people and property, ensure the orderly flow of traffic, and enforce the law) and the community-based, problem-oriented policing services.

1999 PERFORMANCES:

- Completed transition to full department reorganization.
- Began institutionalizing community-based and problem-oriented policing within the Community Services Division.
- Managed the Motorcycle Enforcement Program effectively.
- Efficiently responded to citizens' calls for service.
- Enforced various laws through preventative measures and making arrests.
- Effectively investigated traffic accidents, and ensured compliance with traffic laws through the issuance of violation citations.
- Continued to aid in the free flow of traffic by enforcing parking laws through education, signage, and citations.
- Managed the Crisis Resolution Unit & Crisis Intervention Response Team.
- Managed the Canine Unit and the Bicycle Patrol.
- Managed the Explosive Ordinance Disposal Unit.
- Managed the Traffic Callout Team, provide security for special events/VIPs
- Enforced various Court Orders (subpoenas, warrants, summons, and DV Writs)
- Managed the Reserve Officer Program.

2000 PERFORMANCE OBJECTIVES:

- Complete transition to full department reorganization.
- Begin institutionalizing community-based and problem-oriented policing within the Community Services Division.
- Manage the Motorcycle Enforcement Program effectively.
- Efficiently respond to citizens' calls for service.
- Enforce various laws through preventative measures and making arrests.
- Effectively investigate traffic accidents, and ensure compliance with traffic laws through the issuance of violation citations.
- Continue to aid in the free flow of traffic by enforcing parking laws through education, signage, and citations.
- Manage the Crisis Resolution Unit & Crisis Intervention Response Team.
- Manage the Canine Unit and the Bicycle Patrol.
- Manage the Explosive Ordinance Disposal Unit.
- Manage the Traffic Callout Team, provide security for special events/VIPs
- Enforce various Court Orders (subpoenas, warrants, summons, and DV Writs)
- Manage the Reserve Officer Program.

2000 PROGRAM PLAN

DEPARTMENT: POLICE
 PROGRAM: Community Services
 RESOURCES:

DIVISION: COMMUNITY SERVICES DIV

	1998 REVISED			1999 REVISED			2000 BUDGET			
	FT	PT	T	FT	PT	T	FT	PT	T	
PERSONNEL:	270	0	0	270	0	0	270	0	0	
PERSONAL SERVICES				\$20,550,020			\$22,947,440			\$20,903,280
SUPPLIES				92,260			92,260			105,610
OTHER SERVICES				462,920			1,481,820 *			595,090
CAPITAL OUTLAY				50,000			50,000			50,000
TOTAL DIRECT COST:				\$21,155,200			\$24,571,520			\$21,653,980
PROGRAM REVENUES:				\$ 3,658,800			\$ 4,252,800			\$ 5,121,800
WORK MEASURES:										
- Total UCR arrests (adults)				11,500			11,700			11,700
- Total UCR arrests (juvenile)				2,700			2,800			2,800
- Total traffic accidents				8,900			9,100			9,100
- Total fatal traffic accidents				18			20			20
- Total hate crimes				10			10			10
- Total calls for services				250,000			250,000			250,000
- Parking tickets issued				41,400			42,150			64,800

89 SERVICE LEVELS ARE FUNDED FOR THE DEPARTMENT. THIS PROGRAM HAS LEVELS:
 6, 7, 9, 14, 15, 16, 17, 18, 19, 57, 66, 81, 84, 86, 88,
 89

* Includes \$137,140 as a match to a federal grant for 15 new police officers to be added in November, 2000 and related support costs

2000 P R O G R A M P L A N

DEPARTMENT: POLICE
PROGRAM: Resource Division

DIVISION: RESOURCE DIVISION

PURPOSE:

The Resource Division is responsible to provide direct support and service support to the operational work units of the Anchorage Police Department.

1999 PERFORMANCES:

- Operated/Dispatched E911/Calls for Service, 24 hour operation of the Emergency Operations Center, supported uniformed field services, investigations and technical services.
- Investigated staff complaints, lawsuits; perform background investigations
- Planned, organized, developed and coordinated training for APD employees.
- Provided forensic and photographic services to APD and support agencies.
- Received, bar coded, warehoused and disposed of property and evidence; monitored impound vehicles.
- Supported Crime Analysis and Police Information Systems.
- Maintained and stored all police reports and related documents.
- Provided financial/budget support for APD, process payments and purchases.
- Provided prudent use and oversight of APD's contracts, grants, vehicle inventories, facility and supplies.
- Performed personnel and payroll support functions for APD, including recruitment for all vacant positions.

2000 PERFORMANCE OBJECTIVES:

- Operate/Dispatch E911/Calls for Service, 24 hour operation of the Emergency Operations Center, support uniformed field services, investigations and technical services.
- Investigate staff complaints, lawsuits; perform background investigations
- Plan, organize, develop and coordinate training for APD employees.
- Provide forensic and photographic services to APD and supporting agencies
- Receive, bar code, warehouse and dispose of property and evidence; monitor impound vehicles.
- Support Crime Analysis and Police Information Systems.
- Maintain and store all police reports and related documents.
- Provide financial/budget support for APD, process payments and purchases.
- Provide prudent use and oversight of APD's contracts, grants, vehicle inventories, facility and supplies.
- Perform personnel and payroll support functions for APD, including recruitment for all vacant positions.

2000 PROGRAM PLAN

DEPARTMENT: POLICE
 PROGRAM: Resource Division
 RESOURCES:

DIVISION: RESOURCE DIVISION

	1998 REVISED			1999 REVISED			2000 BUDGET		
	FT	PT	T	FT	PT	T	FT	PT	T
PERSONNEL:	152	0	0	174	0	0	174	0	0
PERSONAL SERVICES	\$ 9,143,360			\$10,393,030			\$10,612,650		
SUPPLIES	547,160			547,120			503,700		
OTHER SERVICES	6,176,743			5,554,220			4,550,960		
DEBT SERVICE	621,430			608,570			635,850		
CAPITAL OUTLAY	146,800			146,800			124,820		
TOTAL DIRECT COST:	\$16,635,493			\$17,249,740			\$16,427,980		
PROGRAM REVENUES:	\$ 1,369,400			\$ 1,419,400			\$ 1,477,900		
WORK MEASURES:									
- Calls for police officer	294,080			252,000			252,000		
- APSIN/NCIC audits, entries, inquiries	81,152			92,000			92,000		
- Computer systems supported	250			280			280		
- Evidence incoming and outgoing - pieces	105,000			110,000			110,000		
- Number of police reports input into PLIMS/Tiburon 1998,1999	70,000			75,000			75,000		
- Public inquiries for Evidence Auction info.	115,000			120,000			120,000		
- 911 Emergency calls	128,000			132,000			132,000		
- Accounting documents processed	8,000			8,000			8,000		
- Number of grant applications prepared	5			6			6		
- Brady Bill background checks	3,000			0			0		
- Crime scene photographs development and processing	119,302			120,000			120,000		
- Latent prints, crime cards and ID's made, evidence examined.	28,692			29,000			29,000		
- Number of hours sworn and non-sworn employees received training	25,200			25,000			25,000		
- Applications processed (sworn and non-sworn)	3,300			3,300			3,300		
- Investigate complaints	50			50			50		

89 SERVICE LEVELS ARE FUNDED FOR THE DEPARTMENT. THIS PROGRAM HAS LEVELS:

2, 3, 4, 5, 24, 25, 26, 27, 28, 29, 30, 31, 32, 33, 34,
 35, 36, 37, 38, 39, 40, 41, 42, 43, 44, 45, 46, 47, 48, 49,
 50, 51, 52, 53, 54, 55, 56, 58, 59, 60, 61, 63, 64, 65, 67,
 68, 69, 70, 71, 74, 75, 76, 77, 78, 79, 82, 83, 85, 87

**ANCHORAGE
POLICE
DEPARTMENT**

OPERATING GRANT FUNDED PROGRAMS

<u>GRANT PROGRAM</u>	<u>FY99 Amount</u>	<u>FY99</u>	<u>FT</u>	<u>PT</u>	<u>T</u>	<u>FY2000 Amount</u>	<u>FY2000</u>	<u>FT</u>	<u>PT</u>	<u>T</u>	<u>GRANT PERIOD</u>
GRANT FUNDING	\$ 1,184,589		6	0	0	\$ 1,314,231		15	0	0	
POLICE DEPARTMENT GENERAL GOVERNMENT OPERATING BUDGET	\$ 47,450,720		529	0	0	\$ 45,903,900		544			
	\$ 48,635,309		535	0	0	\$ 47,218,131		559	0	0	
GRANT FUNDING REPRESENTED	2.5%	OF THE DEPARTMENT'S REVISED 1999 DIRECT COST OPERATING BUDGET.									
GRANT FUNDING SHOULD ADD	2.9%	TO DEPARTMENT'S DIRECT COST IN THE MAYOR'S 2000 OPERATING BUDGET.									
SPECIAL INVESTIGATION FUND	\$ 240,940 (Estimate)					\$ 225,000 (Estimate)					Upon completion
- Special fund to receive money seized or confiscated in the course of criminal investigations. These monies are received through court disposition.											
LOCAL LAW ENFORCEMENT BLOCK GRANT	\$ 600,412					\$ 584,319 (Estimate)					2 years
- Provide funds to underwrite projects to reduce crime and improve public safety.											
COPS UNIVERSAL HIRING 1996	\$ 30,000		6			n/a					3 years from award
- Provide additional police officers as part of an overall plan to address crime and related problems through Community Policing (Total grant \$450,000)											
COPS UNIVERSAL HIRING 1999	n/a					\$ 150,000 (Estimate for 2000)	15				3 years from date of award
- Provide additional police officers as part of an overall plan to address crime and related problems through Community Policing (Total grant requested \$1,125,000)											
STREET LEVEL DRUG CRIMES	\$ 91,467					\$ 50,250					7/1/99 - 6/30/2000
- Provide funding to enhance enforcement of drug abuse laws and to reduce drug use, sales and associated violent crimes.											
TEA 21 HIGHWAY SAFETY GRANT: SPEED & SEATBELT ENFORCEMENT	\$ 70,000					\$ 240,000 (Requested)					10/1/99-9/30/2000
- Provide for enhanced enforcement of unsafe driving acts such as excess speed, failure to wear seatbelts and running red lights.											

**ANCHORAGE
POLICE
DEPARTMENT**

OPERATING GRANT FUNDED PROGRAMS

<u>GRANT PROGRAM</u>	<u>FY99 Amount</u>	<u>FY99</u>			<u>FY2000 Amount</u>	<u>FY2000</u>			<u>GRANT PERIOD</u>
		<u>FT</u>	<u>PT</u>	<u>T</u>		<u>FT</u>	<u>PT</u>	<u>T</u>	
MOTOR CARRIER SAFETY ENFORCEMENT	\$ 35,000				\$ 15,000 (Estimate)				7/1/99-6/30/2000
- Provide for officer training in and enhanced enforcement of safe vehicles and drivers of commercial carriers.									
TOBACCO SALES TO MINORS	\$ 116,770				\$ n/a				Through 6/30/2000
- Provide funds to enhance investigation of sales of tobacco products to minors and education about the dangers of tobacco use by minors.									
UNDERAGE DRINKING ENFORCEMENT	\$ n/a				\$ 49,662				7/1/99-6/30/2000
- Provide funds to assist in the enforcement of underage drinking laws and perform compliance checks.									
Total	\$ 1,184,589	6	0	0	\$ 1,314,231	15	0	0	

BPAB010R
09/10/99
102126

M U N I C I P A L I T Y O F A N C H O R A G E
2000 DEPARTMENT RANKING

DEPT: 24 -POLICE
DEPT BUDGET UNIT/
RANK PROGRAM

SL SVC
CODE LVL

1 4111-CHIEF OF POLICE CB 1 Plan, organize, control, and lead the
0781-Police Administration OF Anchorage Police Department in deliver-
SOURCE OF FUNDS, THIS SVC LEVEL: 2 ing police services to the Anchorage
TAX SUPPORT Metropolitan Police Service Area.
(New budget unit, was 4110)

PERSONNEL			PERSONAL	SUPPLIES	OTHER	DEBT	CAPITAL	TOTAL
FT	PT	T	SERVICE		SERVICES	SERVICE	OUTLAY	
3	0	0	263,730	7,010	4,320	0	1,400	276,460

2 4970-EMERGENCY 911 SERVICE CB 1 Emergency 911 service revenue.
0446-Resource Division OF
SOURCE OF FUNDS, THIS SVC LEVEL: 1

PROGRAM REVENUES 983,500

PERSONNEL			PERSONAL	SUPPLIES	OTHER	DEBT	CAPITAL	TOTAL
FT	PT	T	SERVICE		SERVICES	SERVICE	OUTLAY	
0	0	0	0	0	0	0	0	0

3 4990-PERSONNEL & PAYROLL CB 1 Payroll clerk processes timecards for
0446-Resource Division OF APD personnel and tracks overtime and
SOURCE OF FUNDS, THIS SVC LEVEL: 3 leave requests. Troubleshoots payroll
TAX SUPPORT records and pay discrepancies.
Researches payroll problems, and per-
forms payroll audits.

PERSONNEL			PERSONAL	SUPPLIES	OTHER	DEBT	CAPITAL	TOTAL
FT	PT	T	SERVICE		SERVICES	SERVICE	OUTLAY	
1	0	0	56,620	7,400	45,510	0	0	109,530

4 4985-POLICE TRAINING CB 1 Coordinate minimum training to qualify
0446-Resource Division OF employees to meet the performance
SOURCE OF FUNDS, THIS SVC LEVEL: 4 standards of his/her position.
TAX SUPPORT (New budget unit, was 4330.)

PERSONNEL			PERSONAL	SUPPLIES	OTHER	DEBT	CAPITAL	TOTAL
FT	PT	T	SERVICE		SERVICES	SERVICE	OUTLAY	
2	0	0	171,690	53,350	25,270	0	75,000	325,310

BPAB010R
09/10/99
102126

M U N I C I P A L I T Y O F A N C H O R A G E
2000 DEPARTMENT RANKING

DEPT: 24 -POLICE
DEPT BUDGET UNIT/
RANK PROGRAM

SL SVC
CODE LVL

5 4910-RESOURCE DIVISION ADMIN CB 1 Direct the sections responsible for
0446-Resource Division OF the operational support functions of the
SOURCE OF FUNDS, THIS SVC LEVEL: 5 department: Resource and Fiscal
TAX SUPPORT Management, Dispatch, Crime Analysis and
Information Systems, Property and
Evidence, Forensics Lab, Training,
Personnel, Records and Internal Affairs.
(Added 2 Lieutenants as part of
reorganization.)

PERSONNEL			PERSONAL	SUPPLIES	OTHER	DEBT	CAPITAL	TOTAL
FT	PT	T	SERVICE					
1	0	0	114,940	1,020	49,740	0	0	165,700

6 4610-COMMUNITY SVCS DIV ADMIN CB 1 Plan and direct the deployment of police
0300-Community Services OF officers for 24-hour coverage of patrol
SOURCE OF FUNDS, THIS SVC LEVEL: 3 areas to protect persons and property,
TAX SUPPORT keep the peace, assist in the orderly
flow of traffic, respond quickly to
emergency calls for police assistance,
and engage in various community-based
and problem-oriented policing
activities. (Added function of Community
Service Patrol & Messenger, 6 positions)

PERSONNEL			PERSONAL	SUPPLIES	OTHER	DEBT	CAPITAL	TOTAL
FT	PT	T	SERVICE					
2	0	0	209,690	2,020	4,630	0	0	216,340

7 4620-COMMUNITY SERVICES OPS CB 1 Deploy Police Patrol units to patrol
0300-Community Services OF 24 hours 7 days per week. Respond only
SOURCE OF FUNDS, THIS SVC LEVEL: 12 to emergency, life threatening situa-
TAX SUPPORT tions and serious criminal activities
IGC SUPPORT dependant upon immediate Police Officer
PROGRAM REVENUES 4,052,800 response, and to provide a minimum
effort in community-based/problem
oriented policing tactics. (Added func-
tions. Combined Budget Units 4620, 4630,
4640,4650,4660, & added detectives-4700)

PERSONNEL			PERSONAL	SUPPLIES	OTHER	DEBT	CAPITAL	TOTAL
FT	PT	T	SERVICE					
198	0	0	15,354,110	64,100	124,720	0	28,000	15,570,930

BPAB010R
09/10/99
102126

M U N I C I P A L I T Y O F A N C H O R A G E
2000 DEPARTMENT RANKING

DEPT: 24 -POLICE

DEPT BUDGET UNIT/
RANK PROGRAM

SL SVC
CODE LVL

8 4630-COMMUNITY SVCS CITY WIDE
0786-Citywide Services
SOURCE OF FUNDS, THIS SVC LEVEL:
TAX SUPPORT

CB 1 Investigate crimes against persons re-
OF sulting in prosecution of offenders, to
6 include: homicide, kidnapping, domestic
violence, and sexual assaults of adults
and children. Transport prisoners and
serve court paperwork. Investigate
fatal traffic accidents. Conduct pawn
shop compliance. (Combined unit-
different people, combined budgets
4710,4720,4730,4750, and 4760)

PROGRAM REVENUES 5,000

PERSONNEL			PERSONAL	SUPPLIES	OTHER	DEBT	CAPITAL	TOTAL
FT	PT	T	SERVICE		SERVICES	SERVICE	OUTLAY	
56	0	0	4,889,820	11,120	64,410	0	23,370	4,988,720

9 4670-PARKING
0300-Community Services
SOURCE OF FUNDS, THIS SVC LEVEL:
TAX SUPPORT

CO 1 This service exists to receive
OF intragovernmental charges for costs
3 associated with enforcement of parking
violations.
(Was Budget Unit 4971)

PROGRAM REVENUES 700,000

PERSONNEL			PERSONAL	SUPPLIES	OTHER	DEBT	CAPITAL	TOTAL
FT	PT	T	SERVICE		SERVICES	SERVICE	OUTLAY	
0	0	0	0	0	0	0	0	0

10 4630-COMMUNITY SVCS CITY WIDE
0786-Citywide Services
SOURCE OF FUNDS, THIS SVC LEVEL:
TAX SUPPORT

CO 2 Two additional personnel would be added
OF at this level, one for fatal accident
6 investigation and one for warrants unit.

PROGRAM REVENUES 0

PERSONNEL			PERSONAL	SUPPLIES	OTHER	DEBT	CAPITAL	TOTAL
FT	PT	T	SERVICE		SERVICES	SERVICE	OUTLAY	
2	0	0	184,150	500	9,910	0	0	194,560

11 4630-COMMUNITY SVCS CITY WIDE
0786-Citywide Services
SOURCE OF FUNDS, THIS SVC LEVEL:
TAX SUPPORT

CO 3 Two additional personnel would be added
OF at this level. One for the warrant sec-
6 tion and the other would be a second
Sergeant to supervise the major crime
unit.

BPAB010R
09/10/99
102126

M U N I C I P A L I T Y O F A N C H O R A G E
2000 DEPARTMENT RANKING

DEPT: 24 -POLICE
DEPT BUDGET UNIT/
RANK PROGRAM

SL SVC
CODE LVL

PERSONNEL			PERSONAL	SUPPLIES	OTHER	DEBT	CAPITAL	TOTAL
FT	PT	T	SERVICE					
2	0	0	190,580	500	2,740	0	0	193,820

12 4630-COMMUNITY SVCS CITY WIDE CO 4 Two additional personnel would be added
0786-Citywide Services OF at this level, one for major crimes,
SOURCE OF FUNDS, THIS SVC LEVEL: 6 increasing assignable cases. The
TAX SUPPORT other position would be the command
officer for major crimes and warrants.

PERSONNEL			PERSONAL	SUPPLIES	OTHER	DEBT	CAPITAL	TOTAL
FT	PT	T	SERVICE					
2	0	0	184,490	500	510	0	0	185,500

13 4630-COMMUNITY SVCS CITY WIDE CO 5 An additional person will be added to
0786-Citywide Services OF the Major Crime Unit. A domestic
SOURCE OF FUNDS, THIS SVC LEVEL: 6 violence investigator will be added to
TAX SUPPORT the Warrants Unit.

PERSONNEL			PERSONAL	SUPPLIES	OTHER	DEBT	CAPITAL	TOTAL
FT	PT	T	SERVICE					
2	0	0	157,320	0	0	0	0	157,320

14 4620-COMMUNITY SERVICES OPS CO 2 Respond to criminal situations that
0300-Community Services OF require a police officer. This includes
SOURCE OF FUNDS, THIS SVC LEVEL: 12 reports of crimes after the fact,
TAX SUPPORT domestic disputes, threat of bodily
harm, burglaries, thefts, and numerous
varied requests for assistance, plus
lesser events requiring police attention
but not of a time-sensitive nature.

PERSONNEL			PERSONAL	SUPPLIES	OTHER	DEBT	CAPITAL	TOTAL
FT	PT	T	SERVICE					
13	0	0	1,038,300	3,280	6,600	0	0	1,048,180

BPAB010R
09/10/99
102126

M U N I C I P A L I T Y O F A N C H O R A G E
2000 DEPARTMENT RANKING

DEPT: 24 -POLICE

DEPT BUDGET UNIT/
RANK PROGRAM

SL SVC
CODE LVL

15 4620-COMMUNITY SERVICES OPS CO 3 Respond to criminal situations that are
0300-Community Services OF appropriate for community-based/problem
SOURCE OF FUNDS, THIS SVC LEVEL: 12 oriented police methods
TAX SUPPORT (partnershiping).

PERSONNEL			PERSONAL	SUPPLIES	OTHER	DEBT	CAPITAL	TOTAL
FT	PT	T	SERVICE		SERVICES	SERVICE	OUTLAY	
14	0	0	1,210,950	5,800	5,560	0	0	1,222,310

16 4620-COMMUNITY SERVICES OPS CO 4 Enhance all police services, but most
0300-Community Services OF notably the community-based/problem
SOURCE OF FUNDS, THIS SVC LEVEL: 12 oriented aspects, by the addition of the
TAX SUPPORT specialized services of canine, traffic
enforcement, and misdemeanor follow-up
units.

PERSONNEL			PERSONAL	SUPPLIES	OTHER	DEBT	CAPITAL	TOTAL
FT	PT	T	SERVICE		SERVICES	SERVICE	OUTLAY	
13	0	0	1,045,410	500	8,000	0	0	1,053,910

17 4620-COMMUNITY SERVICES OPS CO 5 Provide adequate supplies and equipment
0300-Community Services OF to discharge duties described in funding
SOURCE OF FUNDS, THIS SVC LEVEL: 12 levels 1,2 & 3. This represents
TAX SUPPORT supplies for the Crisis Resolution Unit,
the Critical Incident Response Team, the
Explosive Ordinance Unit, the Canine
Unit, and various specialty patrols like
motorcycle and bicycle.

PERSONNEL			PERSONAL	SUPPLIES	OTHER	DEBT	CAPITAL	TOTAL
FT	PT	T	SERVICE		SERVICES	SERVICE	OUTLAY	
9	0	0	754,540	7,160	2,260	0	0	763,960

18 4620-COMMUNITY SERVICES OPS CO 6 Officers would be utilized to augment
0300-Community Services OF bicycle, foot, and park patrol. In
SOURCE OF FUNDS, THIS SVC LEVEL: 12 addition, they would be utilized
TAX SUPPORT wherever needed to reduce response
times and increase service.

BPAB010R
09/10/99
102126

M U N I C I P A L I T Y O F A N C H O R A G E
2000 DEPARTMENT RANKING

DEPT: 24 -POLICE
DEPT BUDGET UNIT/
RANK PROGRAM

SL SVC
CODE LVL

PERSONNEL			PERSONAL	SUPPLIES	OTHER	DEBT	CAPITAL	TOTAL
FT	PT	T	SERVICE		SERVICES	SERVICE	OUTLAY	
14	0	0	1,113,840	0	0	0	0	1,113,840

19 4620-COMMUNITY SERVICES OPS CO 7 As a result of the 1997 voter approval
0300-Community Services OF of Proposition 3, the Anchorage Police
SOURCE OF FUNDS, THIS SVC LEVEL: 12 Department is now responsible for the
enforcement of the Municipal Code as it
IGC SUPPORT relates to parking enforcement. Sworn
police officers are now delegated to
enforce this code. This service level
funds the added overtime of sworn
police officers.

PERSONNEL			PERSONAL	SUPPLIES	OTHER	DEBT	CAPITAL	TOTAL
FT	PT	T	SERVICE		SERVICES	SERVICE	OUTLAY	
0	0	0	42,700	0	0	0	22,000	64,700

20 4640-COMMUNITY SVCS METRO CB 1 Investigate mid-level drug crimes. In-
0787-Metro OF vestigate street level drug and vice
SOURCE OF FUNDS, THIS SVC LEVEL: 5 crime. Provide personnel for special
TAX SUPPORT assignment directed at area-specific
crimes. Provide for supervision of
PROGRAM REVENUES 125,500 personnel.
(New functions. Old org was 4740.)

PERSONNEL			PERSONAL	SUPPLIES	OTHER	DEBT	CAPITAL	TOTAL
FT	PT	T	SERVICE		SERVICES	SERVICE	OUTLAY	
4	0	0	472,160	6,020	158,070	0	0	636,250

21 4640-COMMUNITY SVCS METRO CO 2 Investigate mid-level drug crimes.
0787-Metro OF Investigate street level drug and vice
SOURCE OF FUNDS, THIS SVC LEVEL: 5 crime. Provide personnel for special
TAX SUPPORT assignment directed at area-specific
crimes. Provide for supervision of
personnel.

PERSONNEL			PERSONAL	SUPPLIES	OTHER	DEBT	CAPITAL	TOTAL
FT	PT	T	SERVICE		SERVICES	SERVICE	OUTLAY	
2	0	0	153,260	1,000	0	0	0	154,260

BPAB010R
09/10/99
102126

M U N I C I P A L I T Y O F A N C H O R A G E
2000 DEPARTMENT RANKING

DEPT: 24 -POLICE
DEPT BUDGET UNIT/
RANK PROGRAM

SL SVC
CODE LVL

22 4640-COMMUNITY SVCS METRO CO 3 Provide command oversight for all
0787-Metro OF operations. Provide for street level
SOURCE OF FUNDS, THIS SVC LEVEL: 5 drug and vice investigations and
TAX SUPPORT support to district commanders for
area problems.

PERSONNEL			PERSONAL	SUPPLIES	OTHER	DEBT	CAPITAL	TOTAL
FT	PT	T	SERVICE					
3	0	0	244,290	1,000	0	0	0	245,290

23 4640-COMMUNITY SVCS METRO CO 4 Investigate mid-level drug crimes. In-
0787-Metro OF vestigate street level drug and vice
SOURCE OF FUNDS, THIS SVC LEVEL: 5 crime. Provide personnel for special
TAX SUPPORT assignment directed at area-specific
crimes.

PERSONNEL			PERSONAL	SUPPLIES	OTHER	DEBT	CAPITAL	TOTAL
FT	PT	T	SERVICE					
1	0	0	76,440	0	0	0	0	76,440

24 4940-PROPERTY & EVIDENCE CB 1 Receive, process, bar code, and data
0446-Resource Division OF entry of new inventory into Tiburon.
SOURCE OF FUNDS, THIS SVC LEVEL: 6 Maintain chain of custody, preserve
TAX SUPPORT evidence and dual control over sensitive
items. Prepare warehoused evidence for
PROGRAM REVENUES 22,000 release to officers for investigation
and court. Monitor safekeep, evidence
and impounded vehicles. (Added
functions and 2 positions transferred
from 4610.)

PERSONNEL			PERSONAL	SUPPLIES	OTHER	DEBT	CAPITAL	TOTAL
FT	PT	T	SERVICE					
10	0	0	542,220	13,810	19,150	0	0	575,180

25 4940-PROPERTY & EVIDENCE CO 2 Receive, process, bar code, and data
0446-Resource Division OF entry of new inventory into Tiburon.
SOURCE OF FUNDS, THIS SVC LEVEL: 6 Maintain chain of custody, preserve
TAX SUPPORT evidence and dual control over sensitive
items securely and maintain records.
Determine ownership and return found
property. Monitor safekeep, evidence
and DWI impounded vehicles.

BPAB010R
09/10/99
102126

M U N I C I P A L I T Y O F A N C H O R A G E
2000 DEPARTMENT RANKING

DEPT: 24 -POLICE
DEPT BUDGET UNIT/
RANK PROGRAM

SL SVC
CODE LVL

PERSONNEL			PERSONAL	SUPPLIES	OTHER	DEBT	CAPITAL	TOTAL
FT	PT	T	SERVICE		SERVICES	SERVICE	OUTLAY	
5	0	0	261,460	0	0	0	0	261,460

26	4940-PROPERTY & EVIDENCE				CO	3	Answer public inquiries for evidence, found property, bicycle and auction information. Data entry inquiries in Tiburon to determine retention of warehoused property and evidence. Schedule property release appointments.
	0446-Resource Division					6	
	SOURCE OF FUNDS, THIS SVC LEVEL:						
	TAX SUPPORT						

PERSONNEL			PERSONAL	SUPPLIES	OTHER	DEBT	CAPITAL	TOTAL
FT	PT	T	SERVICE		SERVICES	SERVICE	OUTLAY	
1	0	0	50,150	0	0	0	0	50,150

27	4940-PROPERTY & EVIDENCE				CO	4	Oversee the daily operation of the Property and Evidence Section, supervise evidence and impound technicians, clerks and assure compliance with Municipal audit requirements, disposal and destruction timetables. Conduct monthly random checks to assure established procedures and applicable Municipal, State and federal laws are being followed.
	0446-Resource Division					6	
	SOURCE OF FUNDS, THIS SVC LEVEL:						
	TAX SUPPORT						

PERSONNEL			PERSONAL	SUPPLIES	OTHER	DEBT	CAPITAL	TOTAL
FT	PT	T	SERVICE		SERVICES	SERVICE	OUTLAY	
1	0	0	91,160	0	0	0	1,700	92,860

28	4950-POLICE INFO SYSTEMS				CB	1	Expediently dispatch a police officer to emergency calls-for-service.
	0446-Resource Division					9	Maintain constant communications with police officers. Transfer emergency calls to AST/AFD. Based on this level of staffing, overtime premium pay would be high to provide this service. Maintain the E911 system.
	SOURCE OF FUNDS, THIS SVC LEVEL:						
	TAX SUPPORT						
	IGC SUPPORT						

BPAB010R
09/10/99
102126

M U N I C I P A L I T Y O F A N C H O R A G E
2000 DEPARTMENT RANKING

DEPT: 24 -POLICE
DEPT BUDGET UNIT/
RANK PROGRAM

SL SVC
CODE LVL

PERSONNEL			PERSONAL	SUPPLIES	OTHER	DEBT	CAPITAL	TOTAL
FT	PT	T	SERVICE					
31	0	0	2,239,970	4,000	329,360	0	0	2,573,330

29 4950-POLICE INFO SYSTEMS CO 2 Answer calls-for-service that are
0446-Resource Division OF of a non-emergency nature. Transfer
SOURCE OF FUNDS, THIS SVC LEVEL: 9 call-for-service from call-takers
TAX SUPPORT system. Provide only minimum information
needed to officers responding to
calls-for-service.

PERSONNEL			PERSONAL	SUPPLIES	OTHER	DEBT	CAPITAL	TOTAL
FT	PT	T	SERVICE					
11	0	0	702,630	2,000	0	0	0	704,630

30 4950-POLICE INFO SYSTEMS CO 3 Answer calls-for-service that are both
0446-Resource Division OF emergency and non-emergency in nature.
SOURCE OF FUNDS, THIS SVC LEVEL: 9 Provide adequate information
TAX SUPPORT to the officers responding to calls.
Provide information requested by
officers, such as warrant checks,
wreckers, etc. Most calls-for-service
would be entered into the PLIMS computer
system.

PERSONNEL			PERSONAL	SUPPLIES	OTHER	DEBT	CAPITAL	TOTAL
FT	PT	T	SERVICE					
4	0	0	234,020	1,000	0	0	0	235,020

31 4950-POLICE INFO SYSTEMS CO 4 Plan and organize 24-hour operation
0446-Resource Division OF of the Police Emergency Communications
SOURCE OF FUNDS, THIS SVC LEVEL: 9 Center. Coordinate the Communications
TAX SUPPORT Section so that it dovetails with
the needs of other sections within the
department. Handle personnel issues
that evolve from the employees assigned
to the Section.

BPAB010R
09/10/99
102126

M U N I C I P A L I T Y O F A N C H O R A G E
2000 DEPARTMENT RANKING

DEPT: 24 -POLICE
DEPT BUDGET UNIT/
RANK PROGRAM

SL SVC
CODE LVL

PERSONNEL			PERSONAL	SUPPLIES	OTHER	DEBT	CAPITAL	TOTAL
FT	PT	T	SERVICE		SERVICES	SERVICE	OUTLAY	
3	0	0	211,580	1,000	990	0	0	213,570

32 4950-POLICE INFO SYSTEMS CO 5 Provide information in a timely manner
0446-Resource Division OF to officers handling calls-for-service.
SOURCE OF FUNDS, THIS SVC LEVEL: 9 Examples would be warrant checks,
TAX SUPPORT wreckers at accident scenes,
citizen requests received in the field.
All calls would be entered into the
departments PLIMS computer system.

PERSONNEL			PERSONAL	SUPPLIES	OTHER	DEBT	CAPITAL	TOTAL
FT	PT	T	SERVICE		SERVICES	SERVICE	OUTLAY	
4	0	0	243,150	0	0	0	0	243,150

33 4950-POLICE INFO SYSTEMS CO 6 Enhance supervision and provide training
0446-Resource Division OF of Dispatch personnel. Respond to
SOURCE OF FUNDS, THIS SVC LEVEL: 9 Prosecutor's and officers' requests for
TAX SUPPORT copies of 911 tapes. Support expanded
police service area and increased patrol
officers.

PERSONNEL			PERSONAL	SUPPLIES	OTHER	DEBT	CAPITAL	TOTAL
FT	PT	T	SERVICE		SERVICES	SERVICE	OUTLAY	
3	0	0	188,490	0	0	0	0	188,490

34 4950-POLICE INFO SYSTEMS CO 7 Repair and maintenance of the E-911
0446-Resource Division OF Emergency Communications System.
SOURCE OF FUNDS, THIS SVC LEVEL: 9
TAX SUPPORT

PERSONNEL			PERSONAL	SUPPLIES	OTHER	DEBT	CAPITAL	TOTAL
FT	PT	T	SERVICE		SERVICES	SERVICE	OUTLAY	
0	0	0	0	0	90,000	0	0	90,000

BPAB010R
09/10/99
102126

M U N I C I P A L I T Y O F A N C H O R A G E
2000 DEPARTMENT RANKING

DEPT: 24 -POLICE
DEPT BUDGET UNIT/
RANK PROGRAM

SL SVC
CODE LVL

35 4920-POLICE RECORDS
0446-Resource Division
SOURCE OF FUNDS, THIS SVC LEVEL:
TAX SUPPORT

PROGRAM REVENUES 191,500

CB 1 Perform criminal history checks, enter
OF traffic citations and serialized stolen
12 property, prepare mandatory State re-
quired monthly audit reports. Enter all
pertinent information gathered on
police reports into Tiburon computer.
(Added clerical duties from 1998's de-
tective division. Transferred 16
clerical positions to create typing
pool.)

PERSONNEL			PERSONAL	SUPPLIES	OTHER	DEBT	CAPITAL	TOTAL
FT	PT	T	SERVICE		SERVICES	SERVICE	OUTLAY	
34	0	0	1,731,100	6,960	5,630	0	5,600	1,749,290

36 4920-POLICE RECORDS
0446-Resource Division
SOURCE OF FUNDS, THIS SVC LEVEL:
TAX SUPPORT

CB 2 Enter citation information into APSIN
OF System and input and update these files.
12 Conduct audits, entries and inquiries
in APSIN/NCIC.

PERSONNEL			PERSONAL	SUPPLIES	OTHER	DEBT	CAPITAL	TOTAL
FT	PT	T	SERVICE		SERVICES	SERVICE	OUTLAY	
5	0	0	270,330	1,200	0	0	0	271,530

37 4920-POLICE RECORDS
0446-Resource Division
SOURCE OF FUNDS, THIS SVC LEVEL:
TAX SUPPORT

CO 3 Perform criminal history check, enter
OF traffic citations and serialized stolen
12 property. Prepare mandatory State re-
quired monthly audit reports. Enter all
pertinent information gathered on police
reports into Tiburon computer system.
Respond to requests for reports from
insurance companies, citizens, MDA
agencies, attorneys, other law enforce-
ment agencies, and federal agencies.

PERSONNEL			PERSONAL	SUPPLIES	OTHER	DEBT	CAPITAL	TOTAL
FT	PT	T	SERVICE		SERVICES	SERVICE	OUTLAY	
7	0	0	356,220	2,500	0	0	0	358,720

BPAB010R
 09/10/99
 102126

M U N I C I P A L I T Y O F A N C H O R A G E
 2000 DEPARTMENT RANKING

DEPT: 24 -POLICE
 DEPT BUDGET UNIT/
 RANK PROGRAM

SL SVC
 CODE LVL

38 4920-POLICE RECORDS CO 4 Perform criminal history checks, enter
 0446-Resource Division OF traffic citations and serialized stolen
 SOURCE OF FUNDS, THIS SVC LEVEL: 12 property. Prepare mandatory State re-
 TAX SUPPORT required monthly audit reports. Enter all
 pertinent information gathered on police
 reports into Tiburon computer system.
 Transcribe and type police reports.
 Receive, file, computerize & distribute
 all historical police reports and asso-
 ciated documents.

PERSONNEL			PERSONAL	SUPPLIES	OTHER	DEBT	CAPITAL	TOTAL
FT	PT	T	SERVICE		SERVICES	SERVICE	OUTLAY	
7	0	0	368,390	0	0	0	0	368,390

39 4920-POLICE RECORDS CO 5 Three positions to assist in the
 0446-Resource Division OF transcription and typing of police
 SOURCE OF FUNDS, THIS SVC LEVEL: 12 reports.
 TAX SUPPORT

PERSONNEL			PERSONAL	SUPPLIES	OTHER	DEBT	CAPITAL	TOTAL
FT	PT	T	SERVICE		SERVICES	SERVICE	OUTLAY	
3	0	0	158,970	0	0	0	0	158,970

40 4920-POLICE RECORDS CO 6 Two positions to assist in the tran-
 0446-Resource Division OF scription and typing of police reports.
 SOURCE OF FUNDS, THIS SVC LEVEL: 12
 TAX SUPPORT

PERSONNEL			PERSONAL	SUPPLIES	OTHER	DEBT	CAPITAL	TOTAL
FT	PT	T	SERVICE		SERVICES	SERVICE	OUTLAY	
2	0	0	87,610	0	0	0	0	87,610

BPAB010R
09/10/99
102126

M U N I C I P A L I T Y O F A N C H O R A G E
2000 DEPARTMENT RANKING

DEPT: 24 -POLICE

DEPT BUDGET UNIT/
RANK PROGRAM

SL SVC
CODE LVL

41 4920-POLICE RECORDS CO 7 Perform criminal history checks, enter
0446-Resource Division OF traffic citations and serialized stolen
SOURCE OF FUNDS, THIS SVC LEVEL: 12 property. Prepare mandatory State re-
TAX SUPPORT required monthly audit reports. Enter all
pertinent information gathered on police
reports into Tiburon computer system.

PERSONNEL			PERSONAL	SUPPLIES	OTHER	DEBT	CAPITAL	TOTAL
FT	PT	T	SERVICE		SERVICES	SERVICE	OUTLAY	
3	0	0	152,020	0	0	0	0	152,020

42 4920-POLICE RECORDS CO 8 One position that assists in the tran-
0446-Resource Division OF scription of typing of police reports.
SOURCE OF FUNDS, THIS SVC LEVEL: 12
TAX SUPPORT

PERSONNEL			PERSONAL	SUPPLIES	OTHER	DEBT	CAPITAL	TOTAL
FT	PT	T	SERVICE		SERVICES	SERVICE	OUTLAY	
1	0	0	52,250	0	0	0	0	52,250

43 4920-POLICE RECORDS CO 9 This service level supports the
0446-Resource Division OF personnel responsible for entering
SOURCE OF FUNDS, THIS SVC LEVEL: 12 data from police reports into the
TAX SUPPORT Tiburon system. Also assists in the
transcription and typing of police
reports.

PERSONNEL			PERSONAL	SUPPLIES	OTHER	DEBT	CAPITAL	TOTAL
FT	PT	T	SERVICE		SERVICES	SERVICE	OUTLAY	
2	0	0	88,110	0	0	0	0	88,110

BPAB010R
09/10/99
102126

M U N I C I P A L I T Y O F A N C H O R A G E
2000 DEPARTMENT RANKING

DEPT: 24 -POLICE

DEPT BUDGET UNIT/
RANK PROGRAM

SL SVC
CODE LVL

44 4920-POLICE RECORDS CO 10 Increase in the number of filled sworn
0446-Resource Division OF positions necessitate additional clerks
SOURCE OF FUNDS, THIS SVC LEVEL: 12 for typing and other clerical support.
TAX SUPPORT

PERSONNEL			PERSONAL	SUPPLIES	OTHER	DEBT	CAPITAL	TOTAL
FT	PT	T	SERVICE		SERVICES	SERVICE	OUTLAY	
4	0	0	180,450	0	0	0	0	180,450

45 4980-FISCAL MANAGEMENT CB 1 Provide financial accounting and budget-
0446-Resource Division OF ing services to the department, prepare
SOURCE OF FUNDS, THIS SVC LEVEL: 8 financial reports for police commanders,
TAX SUPPORT conduct financial analyses, project
revenues, prepare contract documents,
prepare Assembly Memorandums and
Resolutions, act as department's contact
with OMB, Finance, and Purchasing.
Provide supervision of the Accounting
Clerk position.

PERSONNEL			PERSONAL	SUPPLIES	OTHER	DEBT	CAPITAL	TOTAL
FT	PT	T	SERVICE		SERVICES	SERVICE	OUTLAY	
1	0	0	57,820	3,060	120	0	5,000	66,000

46 4980-FISCAL MANAGEMENT CO 2 Process all procurement documents,
0446-Resource Division OF reconcile all billings and invoices to
SOURCE OF FUNDS, THIS SVC LEVEL: 8 orders, process payment documents,
TAX SUPPORT reconcile in-house records to
Municipal financial statements. Run
weekly financial status reports for
Police commanders.

PERSONNEL			PERSONAL	SUPPLIES	OTHER	DEBT	CAPITAL	TOTAL
FT	PT	T	SERVICE		SERVICES	SERVICE	OUTLAY	
1	0	0	54,120	1,800	120	0	0	56,040

BPAB010R
09/10/99
102126

M U N I C I P A L I T Y O F A N C H O R A G E
2000 DEPARTMENT RANKING

DEPT: 24 -POLICE
DEPT BUDGET UNIT/
RANK PROGRAM

SL SVC
CODE LVL

47 4980-FISCAL MANAGEMENT CO 3 Principal and interest of G.O. Bonds.
0446-Resource Division OF
SOURCE OF FUNDS, THIS SVC LEVEL: 8
TAX SUPPORT

PERSONNEL			PERSONAL	SUPPLIES	OTHER	DEBT	CAPITAL	TOTAL
FT	PT	T	SERVICE		SERVICES	SERVICE	OUTLAY	
0	0	0	0	0	0	635,850	0	635,850

48 4980-FISCAL MANAGEMENT CO 4 Provide matching funds required by
0446-Resource Division OF grants awarded by the State of Alaska
SOURCE OF FUNDS, THIS SVC LEVEL: 8 and the Federal Government.
TAX SUPPORT

PERSONNEL			PERSONAL	SUPPLIES	OTHER	DEBT	CAPITAL	TOTAL
FT	PT	T	SERVICE		SERVICES	SERVICE	OUTLAY	
0	0	0	0	0	74,590	0	0	74,590

49 4980-FISCAL MANAGEMENT CO 5 The coordination of department-wide
0446-Resource Division OF maintenance and repair contracts for
SOURCE OF FUNDS, THIS SVC LEVEL: 8 machinery and equipment.
TAX SUPPORT

PERSONNEL			PERSONAL	SUPPLIES	OTHER	DEBT	CAPITAL	TOTAL
FT	PT	T	SERVICE		SERVICES	SERVICE	OUTLAY	
0	0	0	0	0	81,080	0	0	81,080

50 4980-FISCAL MANAGEMENT CO 6 Police retiree medical insurance for
0446-Resource Division OF retired and active police officers.
SOURCE OF FUNDS, THIS SVC LEVEL: 8
TAX SUPPORT

PERSONNEL			PERSONAL	SUPPLIES	OTHER	DEBT	CAPITAL	TOTAL
FT	PT	T	SERVICE		SERVICES	SERVICE	OUTLAY	
0	0	0	0	0	1,832,210	0	0	1,832,210

BPAB010R
09/10/99
102126

M U N I C I P A L I T Y O F A N C H O R A G E
2000 DEPARTMENT RANKING

DEPT: 24 -POLICE
DEPT BUDGET UNIT/
RANK PROGRAM

SL SVC
CODE LVL

51 4980-FISCAL MANAGEMENT CO 7 APD department operational travel costs.
0446-Resource Division OF
SOURCE OF FUNDS, THIS SVC LEVEL: 8
TAX SUPPORT

PERSONNEL			PERSONAL	SUPPLIES	OTHER	DEBT	CAPITAL	TOTAL
FT	PT	T	SERVICE					
0	0	0	0	0	31,610	0	0	31,610

52 4930-POLICE INFO/CRIME ANAL CO 5 UPS (Uninterruptable Power Supply)
0446-Resource Division OF maintenance for three systems.
SOURCE OF FUNDS, THIS SVC LEVEL: 7
TAX SUPPORT

PERSONNEL			PERSONAL	SUPPLIES	OTHER	DEBT	CAPITAL	TOTAL
FT	PT	T	SERVICE					
0	0	0	0	0	4,950	0	0	4,950

53 4930-POLICE INFO/CRIME ANAL CB 1 Enhance the efficiency and
0446-Resource Division OF effectiveness of the Department by
SOURCE OF FUNDS, THIS SVC LEVEL: 7 procuring, developing, operating and
TAX SUPPORT maintaining automated information
systems and crime analysis information.

PERSONNEL			PERSONAL	SUPPLIES	OTHER	DEBT	CAPITAL	TOTAL
FT	PT	T	SERVICE					
7	0	0	504,740	0	143,650	0	16,970	665,360

BPAB010R
09/10/99
102126

M U N I C I P A L I T Y O F A N C H O R A G E
2000 DEPARTMENT RANKING

DEPT: 24 -POLICE
DEPT BUDGET UNIT/
RANK PROGRAM

SL SVC
CODE LVL

54 4930-POLICE INFO/CRIME ANAL CO 2 Provide operations support and training
0446-Resource Division OF for the APD network, E-mail and police
SOURCE OF FUNDS, THIS SVC LEVEL: 7 dispatch workstations. Fifteen work-
TAX SUPPORT stations and 550 "E-mail" users are
supported by this level.

PERSONNEL			PERSONAL	SUPPLIES	OTHER	DEBT	CAPITAL	TOTAL
FT	PT	T	SERVICE		SERVICES	SERVICE	OUTLAY	
2	0	0	109,950	0	5,800	0	0	115,750

55 4930-POLICE INFO/CRIME ANAL ND 3 Maintenance and Licensing Fees for the
0446-Resource Division OF Tiburon System.
SOURCE OF FUNDS, THIS SVC LEVEL: 7
TAX SUPPORT

PERSONNEL			PERSONAL	SUPPLIES	OTHER	DEBT	CAPITAL	TOTAL
FT	PT	T	SERVICE		SERVICES	SERVICE	OUTLAY	
0	0	0	0	0	102,360	0	0	102,360

56 4930-POLICE INFO/CRIME ANAL CO 4 Provide hardware and software support
0446-Resource Division OF for the Anchorage Police Department.
SOURCE OF FUNDS, THIS SVC LEVEL: 7 Provide operations and training support
TAX SUPPORT for the police RMS data entry and
FileMaker database systems. Sixty-five
different databases are supported at
this level.

PERSONNEL			PERSONAL	SUPPLIES	OTHER	DEBT	CAPITAL	TOTAL
FT	PT	T	SERVICE		SERVICES	SERVICE	OUTLAY	
1	0	0	57,850	0	0	0	0	57,850

BPAB010R
09/10/99
102126

M U N I C I P A L I T Y O F A N C H O R A G E
2000 DEPARTMENT RANKING

DEPT: 24 -POLICE
DEPT BUDGET UNIT/
RANK PROGRAM

SL SVC
CODE LVL

57 4670-PARKING
0300-Community Services
SOURCE OF FUNDS, THIS SVC LEVEL:
TAX SUPPORT

CO 2 Contract with the Anchorage Parking
OF Authority to collect and process fine
3 revenue.

PERSONNEL			PERSONAL	SUPPLIES	OTHER	DEBT	CAPITAL	TOTAL
FT	PT	T	SERVICE					
0	0	0	0	0	281,180	0	0	281,180

58 4960-RESOURCE MANAGEMENT
0446-Resource Division
SOURCE OF FUNDS, THIS SVC LEVEL:
TAX SUPPORT

CB 1 Resource Management provides operational
OF administration for the Police Department
5 in the areas of contract administration,
grant writing and development, facility
management and security, APD's inventory
and supervision of department equipment
and supplies.

PERSONNEL			PERSONAL	SUPPLIES	OTHER	DEBT	CAPITAL	TOTAL
FT	PT	T	SERVICE					
1	0	0	71,050	46,540	47,000	0	2,000	166,590

59 4960-RESOURCE MANAGEMENT
0446-Resource Division
SOURCE OF FUNDS, THIS SVC LEVEL:

PROGRAM REVENUES 195,400

CO 2 Provide a centralized distribution and
OF procurement point for the Police Depart-
5 ment for uniforms, leather gear, brass,
body armor, parkas and other equipment;
order and stock all office supplies and
forms; oversee receipt and distribution
of bio-hazard equipment supplies; and
shipping/receiving mail.

PERSONNEL			PERSONAL	SUPPLIES	OTHER	DEBT	CAPITAL	TOTAL
FT	PT	T	SERVICE					
1	0	0	56,720	40,000	7,800	0	0	104,520

60 4960-RESOURCE MANAGEMENT
0446-Resource Division
SOURCE OF FUNDS, THIS SVC LEVEL:
TAX SUPPORT

CO 3 The development, negotiation, and admin-
OF istration of the uniform contract to
5 meet department needs, APD's contractual
obligation for prisoner services, as
well as contracted facility repairs.

BPAB010R
09/10/99
102126

M U N I C I P A L I T Y O F A N C H O R A G E
2000 DEPARTMENT RANKING

DEPT: 24 -POLICE
DEPT BUDGET UNIT/
RANK PROGRAM

SL SVC
CODE LVL

PERSONNEL			PERSONAL	SUPPLIES	OTHER	DEBT	CAPITAL	TOTAL
FT	PT	T	SERVICE		SERVICES	SERVICE	OUTLAY	
0	0	0	0	171,620	1,404,000	0	0	1,575,620

61 4960-RESOURCE MANAGEMENT
0446-Resource Division
SOURCE OF FUNDS, THIS SVC LEVEL:
TAX SUPPORT

CO 4 The development, negotiation, and admin-
OF istration of the uniform cleaning
5 contract to meet the department needs in
accordance with the collective
bargaining agreement between the
Municipality of Anchorage and the
Anchorage Police Department Employees
Association.

PERSONNEL			PERSONAL	SUPPLIES	OTHER	DEBT	CAPITAL	TOTAL
FT	PT	T	SERVICE		SERVICES	SERVICE	OUTLAY	
0	0	0	0	0	130,000	0	0	130,000

62 4111-CHIEF OF POLICE
0781-Police Administration
SOURCE OF FUNDS, THIS SVC LEVEL:
TAX SUPPORT

CB 2 Plan and organize the deployment of
OF police personnel and equipment; direct
2 daily operations; establish policies,
procedures & standards of performance;
and when the Chief is absent, assume the
duties of the office. The Deputy Chief
also provides staff support for the Pub-
lic Safety Advisory Commission & the
Staff Inspections Unit, supplies relief
for the Chief's Jr. Admin Officer.

PERSONNEL			PERSONAL	SUPPLIES	OTHER	DEBT	CAPITAL	TOTAL
FT	PT	T	SERVICE		SERVICES	SERVICE	OUTLAY	
3	0	0	250,490	16,420	3,400	0	0	270,310

63 4985-POLICE TRAINING
0446-Resource Division
SOURCE OF FUNDS, THIS SVC LEVEL:
TAX SUPPORT

CB 2 Coordinate minimum firearms training to
OF qualify sworn employees with firearms.
4 Establish firearms equipment standards
and provide safety inspections of
firearms.

PERSONNEL			PERSONAL	SUPPLIES	OTHER	DEBT	CAPITAL	TOTAL
FT	PT	T	SERVICE		SERVICES	SERVICE	OUTLAY	
1	0	0	87,030	55,000	0	0	0	142,030

BPAB010R
09/10/99
102126

M U N I C I P A L I T Y O F A N C H O R A G E
2000 DEPARTMENT RANKING

DEPT: 24 -POLICE
DEPT BUDGET UNIT/
RANK PROGRAM

SL SVC
CODE LVL

64 4985-POLICE TRAINING
0446-Resource Division
SOURCE OF FUNDS, THIS SVC LEVEL:
TAX SUPPORT

CO 3 Coordinate minimum training on mandated
OF topics, such as first aid, and the use
4 of force for sworn personnel.

PERSONNEL			PERSONAL	SUPPLIES	OTHER	DEBT	CAPITAL	TOTAL
FT	PT	T	SERVICE		SERVICES	SERVICE	OUTLAY	
2	0	0	192,110	28,300	5,000	0	0	225,410

65 4985-POLICE TRAINING
0446-Resource Division
SOURCE OF FUNDS, THIS SVC LEVEL:
TAX SUPPORT

CO 4 Improve the skills of APD non-sworn
OF personnel by coordinating all department
4 training, both inservice internal
training and training offered by other
agencies.

PERSONNEL			PERSONAL	SUPPLIES	OTHER	DEBT	CAPITAL	TOTAL
FT	PT	T	SERVICE		SERVICES	SERVICE	OUTLAY	
1	0	0	95,060	2,990	1,170	0	0	99,220

66 4610-COMMUNITY SVCS DIV ADMIN
0300-Community Services
SOURCE OF FUNDS, THIS SVC LEVEL:
TAX SUPPORT

CB 2 Supply the Patrol administrative
OF office with adequate operational
3 supplies and equipment.

PERSONNEL			PERSONAL	SUPPLIES	OTHER	DEBT	CAPITAL	TOTAL
FT	PT	T	SERVICE		SERVICES	SERVICE	OUTLAY	
1	0	0	89,860	22,750	24,500	0	0	137,110

67 4995-INTERNAL AFFAIRS
0446-Resource Division
SOURCE OF FUNDS, THIS SVC LEVEL:
TAX SUPPORT

CO 3 The background investigator is responsi-
OF ble for the recruitment and pre-hire of
3 qualified applicants.

PERSONNEL			PERSONAL	SUPPLIES	OTHER	DEBT	CAPITAL	TOTAL
FT	PT	T	SERVICE		SERVICES	SERVICE	OUTLAY	
1	0	0	87,770	30	2,700	0	0	90,500

BPAB010R
09/10/99
102126

M U N I C I P A L I T Y O F A N C H O R A G E
2000 DEPARTMENT RANKING

DEPT: 24 -POLICE
DEPT BUDGET UNIT/
RANK PROGRAM

SL SVC
CODE LVL

68 4995-INTERNAL AFFAIRS CB 1 Criminal and non-criminal complaints are
0446-Resource Division OF investigated by the Internal Affairs
SOURCE OF FUNDS, THIS SVC LEVEL: 3 Investigator. The Internal Affairs
TAX SUPPORT Investigator also supervises the Back-
ground Unit. The primary background
investigator is responsible for schedul-
ing professional services and the re-
cruitment and pre-hire testing of quali-
fied applicants.

PERSONNEL			PERSONAL	SUPPLIES	OTHER	DEBT	CAPITAL	TOTAL
FT	PT	T	SERVICE		SERVICES	SERVICE	OUTLAY	
2	0	0	177,530	1,640	19,330	0	2,050	200,550

69 4995-INTERNAL AFFAIRS CO 2 The background investigator is responsi-
0446-Resource Division OF ble for the recruitment and pre-hire
SOURCE OF FUNDS, THIS SVC LEVEL: 3 testing of qualified applicants.
TAX SUPPORT

PERSONNEL			PERSONAL	SUPPLIES	OTHER	DEBT	CAPITAL	TOTAL
FT	PT	T	SERVICE		SERVICES	SERVICE	OUTLAY	
1	0	0	82,230	30	38,700	0	5,000	125,960

70 4910-RESOURCE DIVISION ADMIN CO 3 This service level is responsible for
0446-Resource Division OF the direct operational supervision of
SOURCE OF FUNDS, THIS SVC LEVEL: 5 three sections in the division:
TAX SUPPORT Training, Personnel and Internal
Affairs.
PROGRAM REVENUES 22,000

PERSONNEL			PERSONAL	SUPPLIES	OTHER	DEBT	CAPITAL	TOTAL
FT	PT	T	SERVICE		SERVICES	SERVICE	OUTLAY	
0	0	0	900	500	430	0	0	1,830

BPAB010R
09/10/99
102126

M U N I C I P A L I T Y O F A N C H O R A G E
2000 DEPARTMENT RANKING

DEPT: 24 -POLICE

DEPT BUDGET UNIT/
RANK PROGRAM

SL SVC
CODE LVL

71 4910-RESOURCE DIVISION ADMIN CO 2 Responsible for the overall operational
0446-Resource Division OF direction of the Technical Services
SOURCE OF FUNDS, THIS SVC LEVEL: 5 sections of the division.
TAX SUPPORT

PERSONNEL			PERSONAL	SUPPLIES	OTHER	DEBT	CAPITAL	TOTAL
FT	PT	T	SERVICE					
1	0	0	86,830	500	430	0	0	87,760

72 4120-PUBLIC AFFAIRS CB 1 Responds to the demands of local televi-
0791-Crime Prevention OF sion, radio and newspaper reporters.
SOURCE OF FUNDS, THIS SVC LEVEL: 3 Creates presentations to inform the
TAX SUPPORT community of the responses and activi-
ties of the department, its policies,
and personnel. Responds to concerns of
citizens. Maintains a number of inter-
nal products designed to inform depart-
ment personnel about activities and
procedures. (New budget unit, was 4340)

PERSONNEL			PERSONAL	SUPPLIES	OTHER	DEBT	CAPITAL	TOTAL
FT	PT	T	SERVICE					
2	0	0	133,100	8,270	77,020	0	3,400	221,790

73 4120-PUBLIC AFFAIRS CB 2 Presents information to community groups
0791-Crime Prevention OF designed to enhance the image of the de-
SOURCE OF FUNDS, THIS SVC LEVEL: 3 partment, improve relations with citi-
TAX SUPPORT zens, and prevent crime. Maintains and
operates the department's Crime Stop-
per's hotline for citizens to phone in
tips about current crimes. Orchestrates
special projects at the behest of the
Chief of Police which increase public
understanding & improve dept. morale.

PERSONNEL			PERSONAL	SUPPLIES	OTHER	DEBT	CAPITAL	TOTAL
FT	PT	T	SERVICE					
2	0	0	140,380	3,700	900	0	0	144,980

BPAB010R
09/10/99
102126

M U N I C I P A L I T Y O F A N C H O R A G E
2000 DEPARTMENT RANKING

DEPT: 24 -POLICE
DEPT BUDGET UNIT/
RANK PROGRAM

SL SVC
CODE LVL

74 4990-PERSONNEL & PAYROLL CO 2 Personnel clerk maintains confidential
0446-Resource Division OF & sensitive files on all APD employees,
SOURCE OF FUNDS, THIS SVC LEVEL: 3 tracks personnel actions such as
TAX SUPPORT evaluations, tuition assistance and
disciplinary actions. Performs needed
research on personnel issues. Meets
with judges on subpoenaed files.

PERSONNEL			PERSONAL	SUPPLIES	OTHER	DEBT	CAPITAL	TOTAL
FT	PT	T	SERVICE		SERVICES	SERVICE	OUTLAY	
2	0	0	109,550	0	400	0	0	109,950

75 4990-PERSONNEL & PAYROLL CO 3 Plan, organize, control payroll and
0446-Resource Division OF personnel functions. Provide records
SOURCE OF FUNDS, THIS SVC LEVEL: 3 management personnel with payroll
information. Comply with and administer
federal, state and Municipal labor laws.
Recruit personnel, process promotion,
demotion, termination and transfers.
Answer labor problems, respond to
grievances, EEO complaints.

PERSONNEL			PERSONAL	SUPPLIES	OTHER	DEBT	CAPITAL	TOTAL
FT	PT	T	SERVICE		SERVICES	SERVICE	OUTLAY	
1	0	0	78,600	0	0	0	0	78,600

76 4955-CRIME LABORATORY CB 1 Aid in solving crimes by: 1) fingerprint
0446-Resource Division OF identification of suspects and other
SOURCE OF FUNDS, THIS SVC LEVEL: 4 individuals involved in police investi-
TAX SUPPORT gations, 2) offering expert court testi-
mony on lab findings, 3) photo-document
crime scenes and evidence 4) preparing
crime scene photos for presentation to
court, and 5) working homicide and
major felony crime scenes.
(new budget unit, was 4770)

PERSONNEL			PERSONAL	SUPPLIES	OTHER	DEBT	CAPITAL	TOTAL
FT	PT	T	SERVICE		SERVICES	SERVICE	OUTLAY	
1	0	0	86,930	35,050	5,700	0	0	127,680

BPAB010R
09/10/99
102126

M U N I C I P A L I T Y O F A N C H O R A G E
2000 DEPARTMENT RANKING

DEPT: 24 -POLICE
DEPT BUDGET UNIT/
RANK PROGRAM

SL SVC
CODE LVL

77 4955-CRIME LABORATORY CB 2 Photo-document crime scenes and evidence
0446-Resource Division OF for presentation to court for homicide
SOURCE OF FUNDS, THIS SVC LEVEL: 4 and major felony cases. Examine items
TAX SUPPORT for latent prints. Compare and identify
inked and latent prints. Testify in
court regarding examinations.

PERSONNEL			PERSONAL	SUPPLIES	OTHER	DEBT	CAPITAL	TOTAL
FT	PT	T	SERVICE		SERVICES	SERVICE	OUTLAY	
1	0	0	69,810	14,400	810	0	11,500	96,520

78 4955-CRIME LABORATORY CO 3 Aid in solving crimes by producing crime
0446-Resource Division OF scene photos and other evidentiary
SOURCE OF FUNDS, THIS SVC LEVEL: 4 identifying photographs.
TAX SUPPORT

PERSONNEL			PERSONAL	SUPPLIES	OTHER	DEBT	CAPITAL	TOTAL
FT	PT	T	SERVICE		SERVICES	SERVICE	OUTLAY	
1	0	0	50,550	8,000	2,000	0	0	60,550

79 4955-CRIME LABORATORY CO 4 This service level is necessary to main-
0446-Resource Division OF tain the fingerprint system (AFIS)
SOURCE OF FUNDS, THIS SVC LEVEL: 4
TAX SUPPORT

PERSONNEL			PERSONAL	SUPPLIES	OTHER	DEBT	CAPITAL	TOTAL
FT	PT	T	SERVICE		SERVICES	SERVICE	OUTLAY	
0	0	0	0	0	8,350	0	0	8,350

80 4120-PUBLIC AFFAIRS CO 3 Serves on a rotating basis as the sworn
0791-Crime Prevention OF representative of the department whose
SOURCE OF FUNDS, THIS SVC LEVEL: 3 primary responsibility is to inform the
TAX SUPPORT public of department activities. Trains
to respond to media queries. Creates
department policies concerning public
information and trains department
personnel in these policies.

PERSONNEL			PERSONAL	SUPPLIES	OTHER	DEBT	CAPITAL	TOTAL
FT	PT	T	SERVICE		SERVICES	SERVICE	OUTLAY	
1	0	0	76,240	0	0	0	0	76,240

BPAB010R
09/10/99
102126

M U N I C I P A L I T Y O F A N C H O R A G E
2000 DEPARTMENT RANKING

DEPT: 24 -POLICE
DEPT BUDGET UNIT/
RANK PROGRAM

SL SVC
CODE LVL

81 4620-COMMUNITY SERVICES OPS CV 9 Increase vacancy factor based on
0300-Community Services OF recent experience.
SOURCE OF FUNDS, THIS SVC LEVEL: 12
TAX SUPPORT

PERSONNEL			PERSONAL	SUPPLIES	OTHER	DEBT	CAPITAL	TOTAL
FT	PT	T	SERVICE		SERVICES	SERVICE	OUTLAY	
0	0	0	421,210-	0	0	0	0	421,210-

82 4920-POLICE RECORDS CV 11 Increase vacancy factor in light of
0446-Resource Division OF recent experience.
SOURCE OF FUNDS, THIS SVC LEVEL: 12
TAX SUPPORT

PERSONNEL			PERSONAL	SUPPLIES	OTHER	DEBT	CAPITAL	TOTAL
FT	PT	T	SERVICE		SERVICES	SERVICE	OUTLAY	
0	0	0	25,850-	0	0	0	0	25,850-

83 4950-POLICE INFO SYSTEMS CV 8 Increase vacancy factor based on recent
0446-Resource Division OF experience.
SOURCE OF FUNDS, THIS SVC LEVEL: 9
TAX SUPPORT

PERSONNEL			PERSONAL	SUPPLIES	OTHER	DEBT	CAPITAL	TOTAL
FT	PT	T	SERVICE		SERVICES	SERVICE	OUTLAY	
0	0	0	32,180-	0	0	0	0	32,180-

84 4610-COMMUNITY SVCS DIV ADMIN CO 3 Maintain the records and other admini-
0300-Community Services OF strative documents involving the manage-
SOURCE OF FUNDS, THIS SVC LEVEL: 3 ment and control of deploying large
TAX SUPPORT numbers of police officers and K-9
officers. Coordinate court appearances
between department staff and the court
system.

BPAB010R
09/10/99
102126

M U N I C I P A L I T Y O F A N C H O R A G E
2000 DEPARTMENT RANKING

DEPT: 24 -POLICE
DEPT BUDGET UNIT/
RANK PROGRAM

SL SVC
CODE LVL

PERSONNEL			PERSONAL	SUPPLIES	OTHER	DEBT	CAPITAL	TOTAL
FT	PT	T	SERVICE		SERVICES	SERVICE	OUTLAY	
6	0	0	421,800	0	500	0	0	422,300

85 4940-PROPERTY & EVIDENCE CT 5 Funds transferred from Public Works
0446-Resource Division OF Department since Anchorage Police
SOURCE OF FUNDS, THIS SVC LEVEL: 6 Department will administer and monitor
TAX SUPPORT the contract for towing of vehicles in
rights-of-way.

PERSONNEL			PERSONAL	SUPPLIES	OTHER	DEBT	CAPITAL	TOTAL
FT	PT	T	SERVICE		SERVICES	SERVICE	OUTLAY	
0	0	0	0	0	35,000	0	0	35,000

86 4620-COMMUNITY SERVICES OPS NA 8 Add funding to cover the Municipal costs
0300-Community Services OF to hire 15 additional police officers
SOURCE OF FUNDS, THIS SVC LEVEL: 12 and the costs in support of greater
TAX SUPPORT police activity. A COPS Universal Hiring
Grant has been applied for to assist in
funding partial salaries and benefits
costs of the 15 new officers.

PERSONNEL			PERSONAL	SUPPLIES	OTHER	DEBT	CAPITAL	TOTAL
FT	PT	T	SERVICE		SERVICES	SERVICE	OUTLAY	
0	0	0	0	0	137,140	0	0	137,140

87 4910-RESOURCE DIVISION ADMIN CR 4 Increase the fine for false alarms from
0446-Resource Division OF \$35 to \$100 based on increased cost of
SOURCE OF FUNDS, THIS SVC LEVEL: 5 response and comparison to other
communities.

PROGRAM REVENUES 58,500

PERSONNEL			PERSONAL	SUPPLIES	OTHER	DEBT	CAPITAL	TOTAL
FT	PT	T	SERVICE		SERVICES	SERVICE	OUTLAY	
0	0	0	0	0	0	0	0	0

BPAB010R
09/10/99
102126

M U N I C I P A L I T Y O F A N C H O R A G E
2000 DEPARTMENT RANKING

DEPT: 24 -POLICE
DEPT BUDGET UNIT/
RANK PROGRAM

SL SVC
CODE LVL

88 4670-PARKING CR 3 Increase parking enforcement revenues
0300-Community Services OF by increase enforcement using pre-
SOURCE OF FUNDS, THIS SVC LEVEL: 3 academy officers.

PROGRAM REVENUES 369,000

PERSONNEL			PERSONAL	SUPPLIES	OTHER	DEBT	CAPITAL	TOTAL
FT	PT	T	SERVICE		SERVICES	SERVICE	OUTLAY	
0	0	0	0	0	0	0	0	0

89 4620-COMMUNITY SERVICES OPS CR 10 Budget for the increased personnel
0300-Community Services OF costs incurred to hire qualified
SOURCE OF FUNDS, THIS SVC LEVEL: 12 officers prior to the start of an
Academy so that they can enhance parking
enforcement activities.

PROGRAM REVENUES 0

The costs in this service level will be funded from increased revenues budgeted in the Parking Budget Unit, Fund 101-4670.

PERSONNEL			PERSONAL	SUPPLIES	OTHER	DEBT	CAPITAL	TOTAL
FT	PT	T	SERVICE		SERVICES	SERVICE	OUTLAY	
0	0	0	43,290	0	0	0	0	43,290

SUBTOTAL OF FUNDED SERVICE LEVELS, POLICE

PERSONNEL			PERSONAL	SUPPLIES	OTHER	DEBT	CAPITAL	TOTAL
FT	PT	T	SERVICE		SERVICES	SERVICE	OUTLAY	
529	0	0	38,932,380	665,350	5,467,330	635,850	202,990	45,903,900

----- DEPARTMENT OF POLICE

FUNDING LINE -----

45,903,900

90 4620-COMMUNITY SERVICES OPS CR 11 Reduce expenditures for tuition and
0300-Community Services OF training due to increasing education
SOURCE OF FUNDS, THIS SVC LEVEL: 12 levels of employees.
TAX SUPPORT

PERSONNEL			PERSONAL	SUPPLIES	OTHER	DEBT	CAPITAL	TOTAL
FT	PT	T	SERVICE		SERVICES	SERVICE	OUTLAY	
0	0	0	0	0	5,000	0	0	5,000

BPAB010R
09/10/99
102126

M U N I C I P A L I T Y O F A N C H O R A G E
2000 DEPARTMENT RANKING

DEPT: 24 -POLICE

DEPT BUDGET UNIT/
RANK PROGRAM

SL SVC
CODE LVL

91 4630-COMMUNITY SVCS CITY WIDE CR 6 Reduce costs for tuition and training
0786-Citywide Services OF fees due to increasing level of
SOURCE OF FUNDS, THIS SVC LEVEL: 6 education of employees.
TAX SUPPORT

PERSONNEL			PERSONAL	SUPPLIES	OTHER	DEBT	CAPITAL	TOTAL
FT	PT	T	SERVICE					
0	0	0	0	0	3,020	0	0	3,020

92 4640-COMMUNITY SVCS METRO CR 5 Reduce tuition and training costs due to
0787-Metro OF increasing level of education of
SOURCE OF FUNDS, THIS SVC LEVEL: 5 employees.
TAX SUPPORT

PERSONNEL			PERSONAL	SUPPLIES	OTHER	DEBT	CAPITAL	TOTAL
FT	PT	T	SERVICE					
0	0	0	0	0	1,040	0	0	1,040

93 4910-RESOURCE DIVISION ADMIN CR 5 2000 general budget reductions through
0446-Resource Division OF decrease in expenditures for
SOURCE OF FUNDS, THIS SVC LEVEL: 5 miscellaneous legal costs.
TAX SUPPORT

PERSONNEL			PERSONAL	SUPPLIES	OTHER	DEBT	CAPITAL	TOTAL
FT	PT	T	SERVICE					
0	0	0	0	0	20,000	0	0	20,000

94 4920-POLICE RECORDS CR 12 2000 general budget reductions of
0446-Resource Division OF supplies expense.
SOURCE OF FUNDS, THIS SVC LEVEL: 12
TAX SUPPORT

PERSONNEL			PERSONAL	SUPPLIES	OTHER	DEBT	CAPITAL	TOTAL
FT	PT	T	SERVICE					
0	0	0	0	5,000	0	0	0	5,000

BPAB010R
09/10/99
102126

M U N I C I P A L I T Y O F A N C H O R A G E
2000 DEPARTMENT RANKING

DEPT: 24 -POLICE
DEPT BUDGET UNIT/
RANK PROGRAM

SL SVC
CODE LVL

95 4930-POLICE INFO/CRIME ANAL CR 7 2000 general budget reductions through
0446-Resource Division OF reduction of hardware purchased.
SOURCE OF FUNDS, THIS SVC LEVEL: 7
TAX SUPPORT

PERSONNEL			PERSONAL	SUPPLIES	OTHER	DEBT	CAPITAL	TOTAL
FT	PT	T	SERVICE		SERVICES	SERVICE	OUTLAY	
0	0	0	0	0	0	0	16,980	16,980

96 4950-POLICE INFO SYSTEMS CR 9 2000 general budget reduction through
0446-Resource Division OF decrease in communications expenses.
SOURCE OF FUNDS, THIS SVC LEVEL: 9
TAX SUPPORT

PERSONNEL			PERSONAL	SUPPLIES	OTHER	DEBT	CAPITAL	TOTAL
FT	PT	T	SERVICE		SERVICES	SERVICE	OUTLAY	
0	0	0	0	0	10,000	0	0	10,000

97 4960-RESOURCE MANAGEMENT CR 5 2000 general budget reductions through
0446-Resource Division OF more effective utilization of supplies
SOURCE OF FUNDS, THIS SVC LEVEL: 5 and contractual resources.
TAX SUPPORT

PERSONNEL			PERSONAL	SUPPLIES	OTHER	DEBT	CAPITAL	TOTAL
FT	PT	T	SERVICE		SERVICES	SERVICE	OUTLAY	
0	0	0	0	15,000	30,000	0	0	45,000

98 4940-PROPERTY & EVIDENCE CR 6 2000 general budget reductions in
0446-Resource Division OF supplies and advertising.
SOURCE OF FUNDS, THIS SVC LEVEL: 6
TAX SUPPORT

PERSONNEL			PERSONAL	SUPPLIES	OTHER	DEBT	CAPITAL	TOTAL
FT	PT	T	SERVICE		SERVICES	SERVICE	OUTLAY	
0	0	0	0	10,000	10,000	0	0	20,000

BPAB010R
09/20/99
083340

MUNICIPALITY OF ANCHORAGE
2000 DEPARTMENT RANKING

DEPT: 24 -POLICE
DEPT BUDGET UNIT/
RANK PROGRAM

SL SVC
CODE LVL

99 4980-FISCAL MANAGEMENT CR 8 2000 general budget reductions achieved
0446-Resource Division OF by delaying purchase of equipment and
SOURCE OF FUNDS, THIS SVC LEVEL: 8 contributions.
TAX SUPPORT

PERSONNEL			PERSONAL	SUPPLIES	OTHER	DEBT	CAPITAL	TOTAL
FT	PT	T	SERVICE		SERVICES	SERVICE	OUTLAY	
0	0	0	0	0	40,970	0	5,000	45,970

100 4620-COMMUNITY SERVICES OPS CR 12 Eliminate funds, due to budget
0300-Community Services OF reductions, for 15 new patrol officer
SOURCE OF FUNDS, THIS SVC LEVEL: 12 positions.
TAX SUPPORT

PERSONNEL			PERSONAL	SUPPLIES	OTHER	DEBT	CAPITAL	TOTAL
FT	PT	T	SERVICE		SERVICES	SERVICE	OUTLAY	
0	0	0	0	0	1,564,140	0	0	1,564,140

101 4930-POLICE INFO/CRIME ANAL CR 6 The new Police Records System, Tiburon,
0446-Resource Division OF is now in place and has been tested and
SOURCE OF FUNDS, THIS SVC LEVEL: 7 the former system, PLIMS, can be elim-
TAX SUPPORT inated.

PERSONNEL			PERSONAL	SUPPLIES	OTHER	DEBT	CAPITAL	TOTAL
FT	PT	T	SERVICE		SERVICES	SERVICE	OUTLAY	
0	0	0	0	0	137,750	0	0	137,750

TOTALS FOR DEPARTMENT OF POLICE

, FUNDED AND UNFUNDED

PERSONNEL			PERSONAL	SUPPLIES	OTHER	DEBT	CAPITAL	TOTAL
FT	PT	T	SERVICE		SERVICES	SERVICE	OUTLAY	
529	0	0	38,932,380	695,350	7,289,250	635,850	224,970	47,777,800