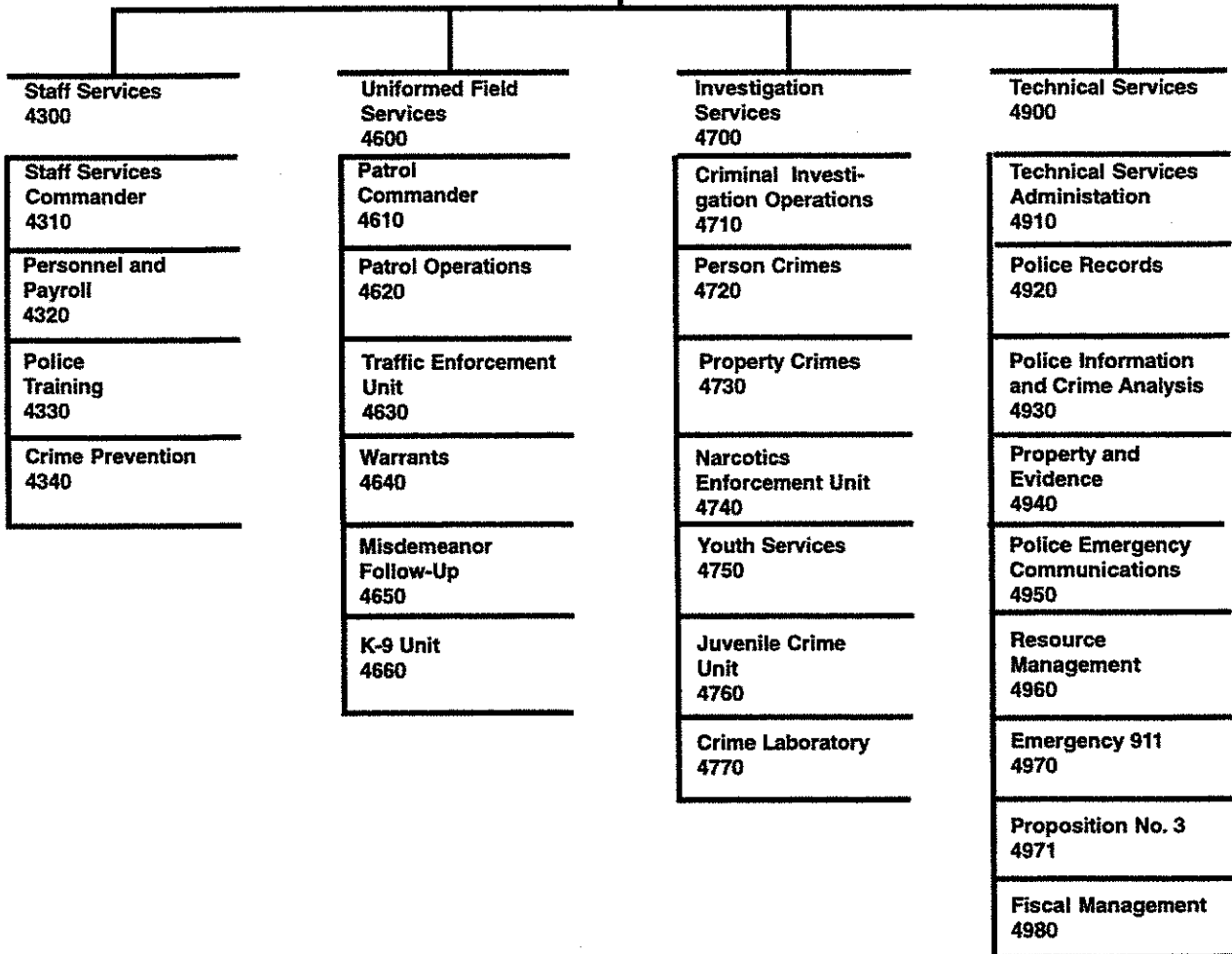


**POLICE**

# POLICE

Operations  
Manager

Chief of Police  
4110



## DEPARTMENT SUMMARY

**Department** POLICE

### Mission

It is the mission of the Anchorage Police Department to deliver police services in the most effective, responsive, and professional manner possible; to protect lives and property; to prevent crime and maintain order; and, to enforce the law impartially with due regard for the constitutional rights of all citizens.

### Major Program Highlights

- Provide a safe environment for our City's residents and visitors.
- Ensure the department is properly staffed and scheduled to ensure the continued reduction in the occurrence of violent crime in Anchorage.
- Implement Community Policing throughout the Municipality.
- Manage and direct parking enforcement with special emphasis in the downtown area.
- Continue the assignment of police officers to foot and bike patrols in the Downtown Central Business district, Muldoon, Fairview, Spenard, paths, and bike paths.
- Increase on-street presence of officers, dramatically impacting the areas of domestic violence, DWI arrests and juvenile crime.
- Continue to address crime and related problems through innovative crime prevention.
- Maintain sub-stations to keep officers within their assigned patrol areas to the maximum extent possible and open a new sub-station to serve the Hillside.
- Continue aggressive traffic enforcement, especially red light running and speeding.
- Administer the Department's grants, and pursue new grant fund opportunities.
- Provide assistance to the Mayor's Crime Task Force.
- Develop and maintain programs addressing juvenile issues.
- Coordinate crime prevention activities; provide the public and media with information.
- Continue operation of both the old Police Local Information Management System (PLIMS) and the new Tiburon Information Management System to ensure access to historical data.
- Assume full funding of the 15 sworn officers hired in 1995 under the federal 1995 COPS grant.
- Provide grant matching funds for 6 sworn officers hired in 1997 under the 1997 COPS grant.

### RESOURCES

	1997	1998
Direct Costs	\$ 45,793,940	\$ 44,985,680
Program Revenues	\$ 3,781,700	\$ 4,483,700
Personnel	505FT	505FT
Grant Budget	\$ 1,814,365	\$ 1,212,141
Grant Personnel	21FT	21FT

1998 RESOURCE PLAN

DEPARTMENT: POLICE

DIVISION	FINANCIAL SUMMARY		PERSONNEL SUMMARY									
	1997 REVISED	1998 BUDGET	1997 REVISED				1998 BUDGET					
			FT	PT	T	TOTAL	FT	PT	T	TOTAL		
POLICE ADMINISTRATION	347,960	347,220	4			4		4				
STAFF SERVICES	2,169,610	2,003,110	18			18		19				19
PATROL DIVISION	20,641,850	20,874,020	267			267		266				266
INVESTIGATION SERVICES	6,988,410	7,045,060	81			81		81				81
TECHNICAL SERVICES	14,379,610	14,082,550	135			135		135				135
OPERATING COST	44,527,440	44,351,960	505			505		505				505 *
ADD DEBT SERVICE	1,266,500	633,720										
DIRECT ORGANIZATION COST	45,793,940	44,985,680	* Does not include 21 partially federally funded sworn positions.									
ADD INTRAGOVERNMENTAL CHARGES FROM OTHERS	11,557,050	12,398,560										
TOTAL DEPARTMENT COST	57,350,990	57,384,240										
LESS INTRAGOVERNMENTAL CHARGES TO OTHERS	2,479,260	2,620,490										
FUNCTION COST	54,871,730	54,763,750										
LESS PROGRAM REVENUES	3,781,700	4,483,700										
NET PROGRAM COST	51,090,030	50,280,050										

1998 RESOURCES BY CATEGORY OF EXPENSE

DIVISION	PERSONAL SERVICES	SUPPLIES	OTHER SERVICES	CAPITAL OUTLAY	TOTAL DIRECT COST
POLICE ADMINISTRATION	314,700	24,820	7,700		347,220
STAFF SERVICES	1,512,390	161,990	328,730		2,003,110
PATROL DIVISION	20,987,100	92,260	181,740	50,000	21,311,100
INVESTIGATION SERVICES	6,675,620	78,050	256,520	34,870	7,045,060
TECHNICAL SERVICES	7,816,620	340,970	5,932,740	17,600	14,107,930
DEPT. TOTAL WITHOUT DEBT SERVICE	37,306,430	698,090	6,707,430	102,470	44,814,420
LESS VACANCY FACTOR	462,460				462,460
ADD DEBT SERVICE					633,720
TOTAL DIRECT ORGANIZATION COST	36,843,970	698,090	6,707,430	102,470	44,985,680

**RECONCILIATION FROM 1997 REVISED BUDGET TO 1998 BUDGET**

**DEPARTMENT: POLICE**

	<b>DIRECT COSTS</b>	<b>POSITIONS</b>		
		FT	PT	T
<b>1997 REVISED BUDGET:</b>	\$ 45,793,940	505 *		
<b>1997 ONE-TIME REQUIREMENTS:</b>				
- Mobile Data Terminals	(462,670)			
- Digital 911 Recording Review Station	(22,000)			
- Personal Equipment/Computers for Added Officers	(111,500)			
- Recruitment and Training for Added Officers	(140,300)			
- Vehicle Purchase for Added Officers	(514,500)			
- Smart Purchases	(31,400)			
<b>AMOUNT REQUIRED TO CONTINUE EXISTING PROGRAMS IN 1998:</b>				
- Salaries and Benefits Adjustment	11,180			
- Non-Personal Services Inflation Adjustment	(13,700)			
- Full Year Additional Cost of Expanded Police	387,030			
- Full Year Additional Cost of Prop. 3 (Parking Violation Enforcement)	200,000			
- Reduction in Budgeted Costs of Programs and Services	(246,880)			
<b>TRANSFERS TO/FROM OTHER DEPARTMENTS:</b>				
- Lease Cost for Sub-Station Transferred to Property & Facility Management	(10,000)			
<b>MISCELLANEOUS INCREASES (DECREASES):</b>				
- Increase in Voter Approved Debt Service	137,000			
- Reduction in Debt Service Resulting From Use of "One-Time" Safe Communities Funding	(757,510)			
- Increase Police/Fire Retiree Medical Costs	50,190			
<b>1997 CONTINUATION LEVEL:</b>	\$ 44,268,880	505 *	0	0
<b>FUNDED NEW/EXPANDED SERVICE LEVELS:</b>				
- <i>Grant Match to Hire Six New Sworn Officers. The 1997 Grant Match Was Provided During Grant Appropriation, Approved July 1, 1997</i>	\$ 281,940			
- <i>Full Municipal Funding of the 1995 COPS Grant Due to Expire 9/30/98</i>	261,660			

(Continued on next page)

**RECONCILIATION FROM 1997 REVISED BUDGET TO 1998 BUDGET**

**DEPARTMENT: POLICE**

<u>DIRECT COSTS</u>	<u>POSITIONS</u>		
	<u>FT</u>	<u>PT</u>	<u>T</u>

**FUNDED NEW/EXPANDED SERVICE LEVELS: (Continued)**

- <i>Additional Licensing Fees and Maintenance Costs Associated With Operating Both the Old Police Local Information Management System (PLIMS) and the New Tiburon Information Management Systems. Operating Dual Systems Will Last Approximately Two Years</i>	173,200	✓		
-----------------------------------------------------------------------------------------------------------------------------------------------------------------------------------------------------------------------------------------------------------------	---------	---	--	--

**UNFUNDED CURRENT SERVICE LEVELS:**

- None

**1998 BUDGET:**

<u>\$ 44,985,680</u>	<u>505 FT*</u>	<u>0 PT</u>	<u>0 T</u>
----------------------	----------------	-------------	------------

\* Does not include 21 partially federally funded sworn positions.

1998 P R O G R A M P L A N

DEPARTMENT: POLICE  
PROGRAM: Police Administration

DIVISION: POLICE ADMINISTRATION

**PURPOSE:**

It is the mission of the Anchorage Police Department to deliver police services in the most effective, responsive, and professional manner possible; to protect lives and property; to prevent crime and maintain order; and to enforce the law impartially.

**1997 PERFORMANCES:**

- Maintained service levels consistent with the community needs through hiring and training additional police personnel.
- Continued to address crime and related problems through increased community policing and innovative crime prevention.
- Developed and maintained prevention, intervention and enforcement strategies to achieve the goals of the Mayor's Community Action Plan on Crime (CAP Crime) project.
- Continued to enhance the community policing effort through the assignment of additional police officers to foot and bike patrols in the Downtown Central Business district, paths, bike paths, Muldoon, Fairview, and Spenard areas.
- Developed and maintained programs addressing juvenile issues including alcohol consumption and graffiti by working with other Municipal departments and the Anchorage School District as outlined in the "CAP Crime" project.

**1998 PERFORMANCE OBJECTIVES:**

- Maintain service levels consistent with the community needs through hiring and training additional police personnel.
- Continue to address crime and related problems through increased community policing and innovative crime prevention.
- Develop and maintain prevention, intervention and enforcement strategies to achieve the goals of the Mayor's Community Action Plan on Crime (CAP Crime) project.
- Continue to enhance the community policing effort through the assignment of police officers to foot and bike patrols in the Downtown Central Business district, paths, bike paths, Muldoon, Fairview, and Spenard areas.
- Develop and maintain programs addressing juvenile issues including alcohol consumption and graffiti by working with other Municipal departments and the Anchorage School District as outlined in the "CAP Crime" project.

**RESOURCES:**

	1996 REVISED			1997 REVISED			1998 BUDGET		
	FT	PT	T	FT	PT	T	FT	PT	T
PERSONNEL:	4	0	0	4	0	0	4	0	0
PERSONAL SERVICES	\$	328,520		\$	311,990		\$	314,700	
SUPPLIES		29,890			27,270			24,820	
OTHER SERVICES		13,930			8,700			7,700	
TOTAL DIRECT COST:	\$	372,340		\$	347,960		\$	347,220	

131 SERVICE LEVELS ARE FUNDED FOR THE DEPARTMENT. THIS PROGRAM HAS LEVELS:  
1, 26, 60, 79,107

## 1998 PROGRAM PLAN

DEPARTMENT: POLICE  
PROGRAM: Staff Services

DIVISION: STAFF SERVICES

### PURPOSE:

To plan and organize management of Police personnel resources. Provide, develop and coordinate training for development of police skills.  
Promote public safety through public education and informational programs.

### 1997 PERFORMANCES:

- Upgraded the automated payroll system.
- Continued to expand and develop departmental unit procedures.
- Continued to administer the Planning Committee activities and implement recommendations.
- Continued to promote public safety through public education and informational programs.
- Continued to develop and coordinate training techniques for the development of police skills.
- Continued to research, develop and implement efficiency programs.
- Continued to expand the recruitment process of seeking qualified women and minorities.
- Planned, organized and delivered training to both sworn and non-sworn employees.
- Coordinated crime prevention activities, provided the public and media with information, and background checks for Safe Homes.

### 1998 PERFORMANCE OBJECTIVES:

- Continue to expand and develop departmental unit procedures.
- Continue to administer the Planning Committee activities and implement recommendations.
- Continue to promote public safety through public education and informational programs.
- Continue to develop and coordinate training techniques for the development of police skills.
- Continue to research, develop and implement efficiency programs.
- Continue to expand the recruitment process of seeking qualified women and minorities.
- Plan, organize and deliver training to both sworn and non-sworn employees.
- Coordinate crime prevention activities, provide the public and media with information, and background checks for Safe Homes.



1998 P R O G R A M P L A N

DEPARTMENT: POLICE  
 PROGRAM: Staff Services  
 RESOURCES:

DIVISION: STAFF SERVICES

	1996 REVISED			1997 REVISED			1998 BUDGET		
	FT	PT	T	FT	PT	T	FT	PT	T
PERSONNEL:	17	0	0	18	0	0	19	0	0
PERSONAL SERVICES			\$ 1,335,010			\$ 1,473,410			\$ 1,512,390
SUPPLIES			162,190			197,640			161,990
OTHER SERVICES			476,470			391,160			328,730
CAPITAL OUTLAY			0			107,400			0
TOTAL DIRECT COST:			\$ 1,973,670			\$ 2,169,610			\$ 2,003,110
WORK MEASURES:									
- Applications processed (non-sworn)			75			150			150
- Applications processed (sworn)			1,800			1,300			1,500
- Personnel actions			2,000			2,000			2,000
- Safe Home background checks			35			35			35
- Investigate complaints			50			50			50
- Polygraphs			100			100			100
- Number of hours sworn and non-sworn employees received training			25,200			25,200			25,200
- Staff inspections to assist in litigations			50			50			50
- Provide information and education on public safety programs			50			50			50

131 SERVICE LEVELS ARE FUNDED FOR THE DEPARTMENT. THIS PROGRAM HAS LEVELS:  
 3, 4, 5, 23, 27, 33, 34, 56, 61, 65, 72, 78, 92, 94, 101,  
 104, 124

## 1998 PROGRAM PLAN

DEPARTMENT: POLICE  
PROGRAM: Patrol Division

DIVISION: PATROL DIVISION

### PURPOSE:

To plan and deploy uniformed police officers for 24 hour patrol in 18 areas to keep the peace, protect persons and property, assist in the orderly flow of traffic, respond quickly to emergency calls, and enforce the laws within the New Anchorage Police Service Area.

### 1997 PERFORMANCES:

- Managed and employed the Motorcycle Enforcement Program.
- Responded to citizen calls for service.
- Ensured compliance with the laws and ordinances by making felony and misdemeanor arrests in an effort to protect the public.
- Investigated fatal and serious injury traffic accidents.
- Reduced traffic accidents by issuing moving traffic citations and maintaining the arrest rate of DWI offenders.
- Directed the Impound Section, Crises Resolution unit, and Traffic unit.
- Directed K-9 unit, Explosive Ordinance Disposal, and Warrant Sections.
- Ensured compliance to orders from the court in the form of domestic violence writs, summons, subpoenas and warrants.
- Investigated and referred for domestic prosecution charges of domestic violence violations.
- Managed deployment of additional protection to special details/events.
- Managed and directed parking enforcement with special emphasis in the downtown area.

### 1998 PERFORMANCE OBJECTIVES:

- Manage and employ the Motorcycle Enforcement Program.
- Respond to citizen calls for service.
- Ensure compliance with the laws and ordinances by making felony and misdemeanor arrests in an effort to protect the public.
- Investigate fatal and serious injury traffic accidents.
- Reduce traffic accidents by issuing moving traffic citations and maintaining the arrest rate of DWI offenders.
- Direct the Impound Section, Crises Resolution unit, and Patrol Followup.
- Direct the K-9 unit, Explosive Ordinance Disposal, and Warrant Sections.
- Ensure compliance to orders from the court in the form of domestic violence writs, summons, subpoenas and warrants.
- Investigate and refer for domestic prosecution charges of domestic violence violations.
- Manage deployment of additional protection to special details/events.
- Manage and direct parking enforcement with special emphasis in the downtown area.

1998 P R O G R A M P L A N

DEPARTMENT: POLICE  
 PROGRAM: Patrol Division  
 RESOURCES:

DIVISION: PATROL DIVISION

	1996 REVISED			1997 REVISED			1998 BUDGET		
	FT	PT	T	FT	PT	T	FT	PT	T
PERSONNEL:	251	0	0	267	0	0	266	0	0
PERSONAL SERVICES	\$18,858,150			\$20,339,850			\$20,550,020		
SUPPLIES	89,290			90,260			92,260		
OTHER SERVICES	135,400			185,740			181,740		
CAPITAL OUTLAY	42,310			26,000			50,000		
TOTAL DIRECT COST:	\$19,125,150			\$20,641,850			\$20,874,020		
PROGRAM REVENUES:	\$ 2,074,800			\$ 2,281,800			\$ 2,983,800		
WORK MEASURES:									
- Average emergency patrol response time (seconds)	200			200			200		
- Drunk driver arrests	2,370			2,537			2,537		
- Moving traffic citations	34,400			35,260			35,260		
- Traffic accidents investigated	8,749			14,914			14,914		
- Fatality and serious injury traffic accident investigated	1,000			1,259			1,259		
- Alcohol related traffic fatalities investigated	12			12			12		
- Warrants, writs, summons and subpoenas served	24,000			24,000			24,000		
- Calls for police officers	240,000			247,000			247,000		
- Traffic arrests	2,524			3,029			3,029		
- K-9 business security checks	8,000			8,000			8,000		
- K-9 searches: buildings area searches, tracking	1,400			1,400			1,400		
- K-9 arrests: felonies and misdemeanors	650			650			650		
- Prisoner transports	10,500			10,500			10,500		
- Parking tickets issued	0			24,045			41,220		

131 SERVICE LEVELS ARE FUNDED FOR THE DEPARTMENT. THIS PROGRAM HAS LEVELS:  
 6, 7, 8, 9, 11, 28, 36, 37, 38, 39, 50, 53, 54, 63, 66,  
 67, 76, 77, 83, 85, 88, 93, 97, 102, 103, 111, 112, 119, 120, 122,  
 126, 128, 130

## 1998 P R O G R A M P L A N

DEPARTMENT: POLICE  
PROGRAM: Detective Services

DIVISION: INVESTIGATION SERVICES

### PURPOSE:

To plan and organize the investigations of crimes against persons and property and the trafficking of illicit drugs in order to apprehend and successfully prosecute criminal offenders.

### 1997 PERFORMANCES:

- Answered over 55,000 phone calls and typed over 34,000 pages of reports.
- Continued the effective operation of the Forensic Lab in the areas of fingerprint identification, crime scene photos and court testimony.
- Prepared & presented 60% of burglary/felony fraud & theft charges to DA.
- Screened all felony property crime cases to include burglary, fraud and theft and actively investigated 15% of these cases.
- Screened all missing person reports and runaway reports.
- Initiated 90% of all vice-related investigations relating to prostitution, gambling and liquor violations.
- Maximized to the greatest extent possible the seizure of illegal drugs.
- Initiated virtually 100% of all illegal drug sale investigations.
- Investigated 90% of felony juvenile crime; prepared/presented 50% to MYC.
- Prepared and presented 50% of the felony violent crime charges to the DA.
- Screened all felony violent crime cases and actively investigated 50% of them, to include: homicide, sexual assault and felony assault, robbery, and crimes against children.

### 1998 PERFORMANCE OBJECTIVES:

- Answer over 55,000 phone calls and type over 34,000 pages of reports.
- Continue the effective operation of the Forensic Lab.
- Prepare and present 60% of burglary/felony fraud and theft charges to DA.
- Screen all felony property crime cases and actively investigate 15% of these cases.
- Screen all missing person reports and runaway reports.
- Initiate 90% of all vice-related investigations.
- Maximize to the greatest extent possible the seizure of illegal drugs.
- Initiate virtually 100% of all illegal drug sale investigations.
- Investigate 90% of felony juvenile crime; prepare & present 50% to MYC.
- Prepare and present 50% of the felony violent crime charges to the DA.
- Screen all felony violent crime cases and actively investigate 50% of them, to include; homicide, sexual assault and felony assault, robbery, and crimes against children.
- Assign a detective to each of the school district's geographical boundaries to work with the schools located within the area.

1998 P R O G R A M P L A N

DEPARTMENT: POLICE  
 PROGRAM: Detective Services  
 RESOURCES:

DIVISION: INVESTIGATION SERVICES

	1996 REVISED			1997 REVISED			1998 BUDGET		
	FT	PT	T	FT	PT	T	FT	PT	T
PERSONNEL:	76	0	0	81	0	0	81	0	0
PERSONAL SERVICES	\$ 6,130,080			\$ 6,612,300			\$ 6,675,620		
SUPPLIES		94,470			80,150			78,050	
OTHER SERVICES		280,140			254,590			256,520	
DEBT SERVICE		24,560			24,560			12,290	
CAPITAL OUTLAY		21,000			41,370			34,870	
TOTAL DIRECT COST:	\$ 6,550,250			\$ 7,012,970			\$ 7,057,350		
PROGRAM REVENUES:	\$ 15,000			\$ 135,500			\$ 135,500		
WORK MEASURES:									
- Narcotics cases assigned		600			600			600	
- Value of drugs seized (\$)	4,000,000			4,000,000			4,000,000		
- Value of drug assets seized (\$)	100,000			100,000			100,000		
- Total drug charges		501			501			501	
- Person crimes cases assigned		1,487			2,520			2,520	
- Property crimes cases assigned		1,965			2,000			2,000	
- Crimes against children assigned		526			997			997	
- Latent prints, crime cards and ID's made, evidence examined		19,175			20,250			20,250	
- Crime scene photographs development and processing		97,320			98,175			98,175	
- Total vice and other related charges		366			300			300	

131 SERVICE LEVELS ARE FUNDED FOR THE DEPARTMENT. THIS PROGRAM HAS LEVELS:  
 10, 12, 13, 14, 15, 16, 29, 30, 31, 40, 41, 48, 49, 55, 59,  
 62, 68, 71, 73, 74, 80, 81, 82, 90, 98, 100, 110, 113, 114, 116,  
 127

## 1998 P R O G R A M P L A N

DEPARTMENT: POLICE  
PROGRAM: Technical Services

DIVISION: TECHNICAL SERVICES

### PURPOSE:

Enhance the effectiveness of the Anchorage Police Department through the management of resources, information, communication and property.

### 1997 PERFORMANCES:

- Implemented Tiburon Computer Aided Dispatch (CAD) and Records Management System (RMS).
- Implemented Imaging System to support Tiburon system.
- Provided support for the Emergency 911 system.
- Resolved all emergency and non-emergency requests for police service.
- Coordinated budget development and enhanced revenue sources.
- Planned, remodeled and modernized the emergency command center.

### 1998 PERFORMANCE OBJECTIVES:

- Provide support for the Emergency 911 system.
- Resolve all emergency and non-emergency requests for police service.
- Coordinate budget development and enhance revenue sources.
- Implement crime analysis pin mapping.
- Assume full funding of the 15 sworn officers hired in 1995 under the federal 1995 COPS grant.
- Provide grant matching funds for the 6 new sworn officers hired under the 1997 COPS grant.
- Continue operation of both the old Police Local Information Management System (PLIMS) and the new Tiburon Information Management System to ensure access to historical data.

1998 P R O G R A M P L A N

DEPARTMENT: POLICE  
 PROGRAM: Technical Services  
 RESOURCES:

DIVISION: TECHNICAL SERVICES

	1996 REVISED			1997 REVISED			1998 BUDGET		
	FT	PT	T	FT	PT	T	FT	PT	T
PERSONNEL:	129	0	0	135	0	0	135	0	0
PERSONAL SERVICES				\$ 6,808,300			\$ 7,534,660		
SUPPLIES				381,030			388,450		340,970
OTHER SERVICES				5,579,180			6,206,510		5,932,740
DEBT SERVICE				1,215,010			1,241,940		621,430
CAPITAL OUTLAY				205,300			249,990		17,600
TOTAL DIRECT COST:				\$14,188,820			\$15,621,550		\$14,703,980
PROGRAM REVENUES:				\$ 1,053,400			\$ 1,364,400		\$ 1,364,400
WORK MEASURES:									
- Calls for police officer				245,521			247,000		252,000
- APSIN/NCIC audits, entries, inquiries				68,870			73,652		73,652
- Computer systems supported				180			250		250
- Evidence incoming and outgoing - pieces				60,000			83,000		83,000
- Number of police reports input into PLIMS				120,344			124,036		124,036
- Public inquiries for Evidence Auction info.				20,000			33,000		33,000
- 911 Emergency calls				127,611			130,000		132,000
- Accounting documents processed				6,000			6,000		6,000
- Number of grant applications prepared				3			3		3
- Brady Bill background checks				8,525			8,525		8,525

131 SERVICE LEVELS ARE FUNDED FOR THE DEPARTMENT. THIS PROGRAM HAS LEVELS:  
 2, 17, 18, 19, 20, 21, 22, 24, 25, 32, 35, 42, 43, 44, 45,  
 46, 47, 51, 52, 57, 58, 64, 69, 70, 75, 84, 86, 87, 89, 91,  
 95, 96, 99, 105, 106, 108, 109, 115, 117, 118, 121, 123, 125, 129, 131

**POLICE  
DEPARTMENT**

**OPERATING GRANT FUNDED PROGRAMS**

<u>GRANT PROGRAM</u>	<u>FY97 Amount</u>	<u>FY97 FT PT T</u>	<u>FY98 Amount</u>	<u>FY98 FT PT T</u>	<u>GRANT PERIOD</u>
GRANT FUNDING	\$ 1,814,365	21	\$ 1,212,141	21	
POLICE DEPARTMENT GENERAL GOVERNMENT OPERATING BUDGET	45,793,940	505	44,985,680	505	
	<u>\$ 47,608,305</u>	<u>526</u>	<u>\$ 46,197,821</u>	<u>526</u>	
GRANT FUNDING REPRESENTED 3.8% OF THE DEPARTMENTS 1997 DIRECT COST BUDGET.					
GRANT FUNDING REPRESENTS 2.6% OF THE DEPARTMENTS PROPOSED 1998 DIRECT COST BUDGET.					
SPECIAL INVESTIGATION FUND	\$ 77,000		\$ 60,000 (Estimate)		Upon Completion
- Special fund to receive money seized or confiscated in the course of criminal investigations. These monies are received thru court disposition.					
LOCAL LAW ENFORCEMENT BLOCK GRANT	\$ 560,187		\$ 561,354		2 Yrs
- Provides units of local government with funds to underwrite projects to reduce crime and improve public safety.					
COPS - MORE	\$ 225,000		\$ n/a		
- Enable contracting of prisoner transport and subpoena service.					
COPS - UNIVERSAL HIRING	\$ 300,000	6FT	\$ 120,000	6FT	3 Yrs
- Provides additional Police Officers as part of an overall plan to address crime and related problems through Community Policing (Total grant \$450,000)					
SAFE AND SOBER STREETS	\$ 80,000		\$ n/a		
- Provides for overtime dedicated to the detection and apprehension of intoxicated drivers and serious traffic offenders.					
STREET LEVEL DRUG CRIMES	\$ 59,850		\$ 86,850		7/1/97 - 6/30/98
- Provides for overtime to reduce street level drug sales and violent crimes associated with street drugs.					
COPS - PHASE I	\$ 512,328	15FT	\$ 383,937	15FT	3 Yrs
- Provides additional Police Officers to address crime and related problems through Community Oriented Policing Services (Total grant \$1,534,864).					
Total \$	<u>1,814,365</u>	<u>21FT</u>	<u>\$ 1,212,141</u>	<u>21FT</u>	



BPAB010R  
 07/16/97  
 3557

M U N I C I P A L I T Y O F A N C H O R A G E  
 1998 DEPARTMENT RANKING

DEPT: 24 -POLICE

DEPT RANK	BUDGET UNIT/ PROGRAM	SL CODE	SVC LVL	
1	4110-POLICE ADMINISTRATION 0296-Police Administration SOURCE OF FUNDS, THIS SVC LEVEL: TAX SUPPORT	CB	1	Plan, organize, control and lead the Anchorage Police Department in delivering police services to the Anchorage Metropolitan Police Service Area.

PERSONNEL			PERSONAL SERVICE	SUPPLIES	OTHER SERVICES	DEBT SERVICE	CAPITAL OUTLAY	TOTAL
FT	PT	T						
1	0	0	108,980	7,000	4,300	0	0	120,280

2	4970-EMERGENCY 911 SERVICE 0446-Technical Services SOURCE OF FUNDS, THIS SVC LEVEL:	CB	1	Emergency 911 service revenue.
			OF	
			1	

PROGRAM REVENUES 983,500

PERSONNEL			PERSONAL SERVICE	SUPPLIES	OTHER SERVICES	DEBT SERVICE	CAPITAL OUTLAY	TOTAL
FT	PT	T						
0	0	0	0	0	0	0	0	0

3	4320-PERSONNEL/PAYROLL 0298-Staff Services SOURCE OF FUNDS, THIS SVC LEVEL: TAX SUPPORT	CB	1	Plan, organize, control payroll and personnel functions. Provide records management personnel with payroll information. Comply with and administer federal, state, & Municipal labor laws. Recruit personnel, process promotion, demotion, termination and transfers. Answer labor problems, respond to grievances, EEO complaints.
			OF	
			5	

PERSONNEL			PERSONAL SERVICE	SUPPLIES	OTHER SERVICES	DEBT SERVICE	CAPITAL OUTLAY	TOTAL
FT	PT	T						
1	0	0	77,130	5,100	90,160	0	0	172,390

4	4330-POLICE TRAINING 0298-Staff Services SOURCE OF FUNDS, THIS SVC LEVEL: TAX SUPPORT	CB	1	Coordinate minimum training to qualify employees to meet the performance standards of his/her position.
			OF	
			5	

BPAB010R  
09/16/97  
163557

M U N I C I P A L I T Y O F A N C H O R A G E  
1998 DEPARTMENT RANKING

DEPT: 24 -POLICE  
DEPT BUDGET UNIT/  
RANK PROGRAM

SL SVC  
CODE LVL

PERSONNEL			PERSONAL	SUPPLIES	OTHER	DEBT	CAPITAL	TOTAL
FT	PT	T	SERVICE		SERVICES	SERVICE	OUTLAY	
2	0	0	148,610	53,350	25,270	0	0	227,230

5 4310-COMMANDER STAFF SERVICES CB 1 Plan and direct APD resource programs  
0298-Staff Services OF to include: adherence to Alaska Police  
SOURCE OF FUNDS, THIS SVC LEVEL: 3 Standards Council Act in recruitment,  
TAX SUPPORT selection, promotion, transfer, career  
pathing, retirement, police skills  
training; physical, psychological, and  
polygraph testing, background checks;  
personnel records and time accounting  
for payroll; internal affairs; & crime  
prevention. (SL reduced \$1880)

PERSONNEL			PERSONAL	SUPPLIES	OTHER	DEBT	CAPITAL	TOTAL
FT	PT	T	SERVICE		SERVICES	SERVICE	OUTLAY	
1	0	0	101,760	700	61,200	0	0	163,660

6 4610-PATROL COMMANDER CB 1 Plan and direct the deployment of  
0300-Patrol Division OF uniformed police officers for 24-hour  
SOURCE OF FUNDS, THIS SVC LEVEL: 4 coverage of 18 neighborhood patrol areas  
TAX SUPPORT providing police presence to protect  
persons and property, keep the peace,  
assist in the orderly flow of traffic,  
and respond quickly to emergency calls  
for police assistance. (SL reduced \$200)

PERSONNEL			PERSONAL	SUPPLIES	OTHER	DEBT	CAPITAL	TOTAL
FT	PT	T	SERVICE		SERVICES	SERVICE	OUTLAY	
1	0	0	102,710	2,000	4,630	0	0	109,340

7 4620-PATROL OPERATIONS CB 1 Deploy Police Patrol units to patrol  
0300-Patrol Division OF 18 neighborhood areas 24 hours 7 days  
SOURCE OF FUNDS, THIS SVC LEVEL: 9 per week. Respond only to emergency,  
TAX SUPPORT life threatening situations and serious  
IGC SUPPORT criminal activities dependent upon  
PROGRAM REVENUES 95,000 immediate Police Officer response.  
(SL reduced \$70,690).

BPAB010R  
 10/16/97  
 3557

M U N I C I P A L I T Y O F A N C H O R A G E  
 1998 DEPARTMENT RANKING

DEPT: 24 -POLICE  
 DEPT BUDGET UNIT/  
 RANK PROGRAM

SL SVC  
 CODE LVL

PERSONNEL			PERSONAL	SUPPLIES	OTHER	DEBT	CAPITAL	TOTAL
FT	PT	T	SERVICE					
151	0	0	11,660,860	12,880	26,850	0	0	11,700,590

8 4660-K-9 UNIT  
 0300-Patrol Division  
 SOURCE OF FUNDS, THIS SVC LEVEL:  
 TAX SUPPORT

CB 1 Provide K-9 Teams to respond to  
 OF requests for building searches, suspect  
 3 tracking, lost children tracking, busi-  
 ness security checks, armed suspects,  
 officer safety and assistance to other  
 law enforcement agencies.  
 (SL reduced \$520).

PERSONNEL			PERSONAL	SUPPLIES	OTHER	DEBT	CAPITAL	TOTAL
T	PT	T	SERVICE					
4	0	0	386,650	7,160	10,260	0	0	404,070

9 4630-TRAFFIC ENFORCEMENT UNIT  
 0300-Patrol Division  
 SOURCE OF FUNDS, THIS SVC LEVEL:  
 TAX SUPPORT  
  
 PROGRAM REVENUES 2,186,800

CB 1 Reduce the total number of traffic  
 OF accidents, especially alcohol related,  
 9 injury and fatal accidents, through  
 enforcement of traffic laws for DWI and  
 other hazardous moving violations.  
 Investigate and follow-up only those  
 accidents which result in fatalities,  
 critical injuries or leaving the  
 scene of an accident.

PERSONNEL			PERSONAL	SUPPLIES	OTHER	DEBT	CAPITAL	TOTAL
FT	PT	T	SERVICE					
9	0	0	672,920	3,280	54,740	0	0	730,940

10 4720-PERSON CRIMES  
 0301-Detective Services  
 SOURCE OF FUNDS, THIS SVC LEVEL:  
 TAX SUPPORT

CB 1 Investigate crimes against persons  
 OF resulting in prosecution of offenders,  
 7 to include: homicide, assault, kid-  
 napping, domestic violence, robbery,  
 sexual assault, missing persons,  
 run-away juveniles, obscene/threatening/  
 harassing phone calls, & misc offenses.  
 This level will allow investigation of  
 75% of assignable homicide, assault,  
 and sexual assault.

BPAB010R  
09/16/97  
163557

M U N I C I P A L I T Y O F A N C H O R A G E  
1998 DEPARTMENT RANKING

DEPT: 24 -POLICE  
DEPT BUDGET UNIT/  
RANK PROGRAM

SL SVC  
CODE LVL

PERSONNEL			PERSONAL SERVICE	SUPPLIES	OTHER SERVICES	DEBT SERVICE	CAPITAL OUTLAY	TOTAL
FT	PT	T						
12	0	0	1,105,440	6,620	38,840	0	0	1,150,900

11 4640-WARRANTS CB 1 Central office for all court documents  
0300-Patrol Division OF involving MOA traffic violations and  
SOURCE OF FUNDS, THIS SVC LEVEL: 6 misdemeanors; receives, sorts,  
TAX SUPPORT catalogs, enters court information into  
State network; locates/serves persons  
with arrest warrants, subpoena, summons  
and domestic violence writs; transports  
and guards prisoners to/from jail/court,  
and guards prisoners at Night Court.

PERSONNEL			PERSONAL SERVICE	SUPPLIES	OTHER SERVICES	DEBT SERVICE	CAPITAL OUTLAY	TOTAL
FT	PT	T						
3	0	0	272,320	4,800	4,540	0	4,000	285,660

12 4710-CRIMINAL INVESTIGATION OP CB 1 Plan and organize the Detective  
0301-Detective Services OF Divison resources to solve crimes  
SOURCE OF FUNDS, THIS SVC LEVEL: 3 against persons and property, and  
TAX SUPPORT apprehend and prosecute criminal  
offenders.  
PROGRAM REVENUES 5,000

PERSONNEL			PERSONAL SERVICE	SUPPLIES	OTHER SERVICES	DEBT SERVICE	CAPITAL OUTLAY	TOTAL
FT	PT	T						
1	0	0	114,580	2,500	9,320	12,290	23,370	162,060

13 4770-CRIME LABORATORY CB 1 Aid in solving crimes by: 1)  
0301-Detective Services OF fingerprint identification of suspects  
SOURCE OF FUNDS, THIS SVC LEVEL: 4 and other individuals involved in police  
TAX SUPPORT investigations, 2) offering expert  
court testimony on lab findings, 3)  
PROGRAM REVENUES 0 photo-document crime scenes and evidence  
4) preparing crime scene photos for  
presentation to court, and 5) working  
homicide and major felony crime scenes.  
(SL reduced \$3170).

BPAB010R  
 10/16/97  
 3557

MUNICIPALITY OF ANCHORAGE  
 1998 DEPARTMENT RANKING

DEPT: 24 -POLICE  
 DEPT BUDGET UNIT/  
 RANK PROGRAM

SL SVC  
 CODE LVL

PERSONNEL			PERSONAL	SUPPLIES	OTHER	DEBT	CAPITAL	TOTAL
FT	PT	T	SERVICE		SERVICES	SERVICE	OUTLAY	
1	0	0	85,430	35,050	3,480	0	0	123,960

14 4750-CRIMES AGAINST CHILDREN CB 1 Investigate felony cases in which  
 0301-Detective Services OF children are the victims of abuse,  
 SOURCE OF FUNDS, THIS SVC LEVEL: 3 neglect, sexual assault & exploitation.  
 TAX SUPPORT This level will allow the investigation  
 of 72% of the assignable crimes against  
 children cases.

PERSONNEL			PERSONAL	SUPPLIES	OTHER	DEBT	CAPITAL	TOTAL
FT	PT	T	SERVICE		SERVICES	SERVICE	OUTLAY	
7	0	0	596,790	500	3,890	0	0	601,180

15 4730-PROPERTY CRIMES CB 1 Reduce property loss through  
 0301-Detective Services OF identification, apprehension/filing  
 SOURCE OF FUNDS, THIS SVC LEVEL: 7 of criminal charges against offenders  
 TAX SUPPORT who commit felony theft, auto theft,  
 theft from vehicles & burglary. Would  
 allow investigation of 80% of burglary,  
 theft, robbery and fraud cases with  
 a loss exceeding \$5000. Provide clerical  
 support and supervision for the Theft &  
 Burglary units.

PERSONNEL			PERSONAL	SUPPLIES	OTHER	DEBT	CAPITAL	TOTAL
FT	PT	T	SERVICE		SERVICES	SERVICE	OUTLAY	
18	0	0	1,316,770	1,080	7,530	0	0	1,325,380

16 4740-NARCOTICS ENFORCEMENT CB 1 Investigate street level drug and  
 0301-Detective Services OF vice crime and provide 40% of the  
 SOURCE OF FUNDS, THIS SVC LEVEL: 6 current enforcement response to  
 TAX SUPPORT narcotics and vice related activities.  
 Focus enforcement efforts primarily on  
 crime in the neighborhoods. This level  
 will provide supervision & clerical  
 support. (Sl reduced \$1,090).

PROGRAM REVENUES 125,500

BPAB010R  
09/16/97  
163557

M U N I C I P A L I T Y O F A N C H O R A G E  
1998 DEPARTMENT RANKING

DEPT: 24 -POLICE  
DEPT BUDGET UNIT/  
RANK PROGRAM

SL SVC  
CODE LVL

PERSONNEL			PERSONAL	SUPPLIES	OTHER	DEBT	CAPITAL	TOTAL
FT	PT	T	SERVICE					
8	0	0	755,660	6,000	30,340	0	0	792,000

17 4940-PROPERTY & EVIDENCE CB 1 Receive, document and check out  
0446-Technical Services OF evidence for investigation officers  
SOURCE OF FUNDS, THIS SVC LEVEL: 6 and the court. Determine ownership  
TAX SUPPORT and return found property. Return  
PROGRAM REVENUES 22,000 safekeeping property to rightful  
owners. Prepare criminal evidence for  
the courts and prosecution.

PERSONNEL			PERSONAL	SUPPLIES	OTHER	DEBT	CAPITAL	TOTAL
FT	PT	T	SERVICE					
5	0	0	261,360	9,140	10,850	0	0	281,350

18 4950-POLICE INFO SYSTEMS CB 1 Expeditiously dispatch a police  
0446-Technical Services OF officer to emergency calls-for-service.  
SOURCE OF FUNDS, THIS SVC LEVEL: 7 Maintain constant communications with  
TAX SUPPORT police officers. Transfer emergency  
IGC SUPPORT calls to AST/AFD. Based on this level of  
staffing, overtime premium pay would be  
high to provide this service. Maintain  
the E911 system.

PERSONNEL			PERSONAL	SUPPLIES	OTHER	DEBT	CAPITAL	TOTAL
FT	PT	T	SERVICE					
31	0	0	2,090,680	4,000	340,890	0	0	2,435,570

19 4920-POLICE RECORDS CB 1 Receive, file, computerize & distribute  
0446-Technical Services OF all historical police reports and  
SOURCE OF FUNDS, THIS SVC LEVEL: 10 associated documents for police officers  
TAX SUPPORT court personnel, prosecutors and other  
PROGRAM REVENUES 191,500 law enforcement officials. Prepare  
court documents daily including police  
reports, criminal intake forms and  
citations. Respond to requests for  
service from public and other agencies.  
(SL reduced \$17,590).

BPAB010R  
 2/16/97  
 3557

M U N I C I P A L I T Y O F A N C H O R A G E  
 1998 DEPARTMENT RANKING

DEPT: 24 -POLICE  
 DEPT BUDGET UNIT/  
 RANK PROGRAM

SL SVC  
 CODE LVL

PERSONNEL			PERSONAL	SUPPLIES	OTHER	DEBT	CAPITAL	TOTAL
FT	PT	T	SERVICE		SERVICES	SERVICE	OUTLAY	
22	0	0	1,163,890	11,940	5,600	0	5,600	1,187,030

20	4980-FISCAL MANAGEMENT 0446-Technical Services SOURCE OF FUNDS, THIS SVC LEVEL: TAX SUPPORT	CB	1 OF 10	Provide financial accounting and budgeting services to the department, prepare financial reports for police commanders, conduct financial analyses, project revenues, prepare contract documents, prepare Assembly Memorandums and Resolutions, act as department's contact with OMB, Finance, and Purchasing.
----	------------------------------------------------------------------------------------------------------	----	---------------	----------------------------------------------------------------------------------------------------------------------------------------------------------------------------------------------------------------------------------------------------------------------------------------------------------------

PERSONNEL			PERSONAL	SUPPLIES	OTHER	DEBT	CAPITAL	TOTAL
T	PT	T	SERVICE		SERVICES	SERVICE	OUTLAY	
1	0	0	65,350	3,060	120	0	0	68,530

21	4930-POLICE INFO/CRIME ANAL 0446-Technical Services SOURCE OF FUNDS, THIS SVC LEVEL: TAX SUPPORT	CB	1 OF 5	Enhance the efficiency and effectiveness of the Department by procuring, developing, operating and maintaining automated information systems. (SL reduced \$129,470).
----	-----------------------------------------------------------------------------------------------------------	----	--------------	-----------------------------------------------------------------------------------------------------------------------------------------------------------------------

PERSONNEL			PERSONAL	SUPPLIES	OTHER	DEBT	CAPITAL	TOTAL
FT	PT	T	SERVICE		SERVICES	SERVICE	OUTLAY	
7	0	0	504,550	13,500	211,950	0	0	730,000

22	4910-TECH SERVICES ADMIN 0446-Technical Services SOURCE OF FUNDS, THIS SVC LEVEL: TAX SUPPORT	CB	1 OF 2	Direct the sections responsible for the operational support functions of the department: Resource and Fiscal Management, Facilities Operations, Police Records and Data Entry, Police Information Systems, Property and Evidence, and Police Communications. (SL reduced \$1370).
----	--------------------------------------------------------------------------------------------------------	----	--------------	-----------------------------------------------------------------------------------------------------------------------------------------------------------------------------------------------------------------------------------------------------------------------------------

BPAB010R  
09/16/97  
163557

M U N I C I P A L I T Y O F A N C H O R A G E  
1998 DEPARTMENT RANKING

DEPT: 24 -POLICE  
DEPT BUDGET UNIT/  
RANK PROGRAM

SL SVC  
CODE LVL

PERSONNEL			PERSONAL SERVICE	SUPPLIES	OTHER SERVICES	DEBT SERVICE	CAPITAL OUTLAY	TOTAL
FT	PT	T						
1	0	0	100,710	1,500	1,140	0	0	103,350

---

23 4340-PUBLIC RELATIONS CB 1 Plan and organize the Anchorage  
0298-Staff Services OF Police Department's general Crime  
SOURCE OF FUNDS, THIS SVC LEVEL: 4 Prevention activities. Establish the  
TAX SUPPORT curriculum and schedules. Coordinate  
all activities with other agencies,  
school committees, teachers, parents,  
and other Crime Prevention groups.

PERSONNEL			PERSONAL SERVICE	SUPPLIES	OTHER SERVICES	DEBT SERVICE	CAPITAL OUTLAY	TOTAL
FT	PT	T						
2	0	0	150,270	7,840	5,000	0	0	163,110

---

24 4960-RESOURCE MANAGEMENT CB 1 Resource Management provides the day-  
0446-Technical Services OF to-day operational administration for  
SOURCE OF FUNDS, THIS SVC LEVEL: 4 the Anchorage Police Department. Areas  
TAX SUPPORT of responsibility are: Contract  
Administration, Grant Development/  
Writing, Facility Management, Facility  
Security, department vehicle allocation/  
procurement, and supervision of depart-  
ment supplies.

PERSONNEL			PERSONAL SERVICE	SUPPLIES	OTHER SERVICES	DEBT SERVICE	CAPITAL OUTLAY	TOTAL
FT	PT	T						
1	0	0	65,800	46,540	47,000	0	2,000	161,340

---

25 4960-RESOURCE MANAGEMENT CB 2 Provide a centralized distribution/  
0446-Technical Services OF procurement point for the Anchorage  
SOURCE OF FUNDS, THIS SVC LEVEL: 4 Police Department regarding uniforms,  
TAX SUPPORT leather gear, brass, body armor, parkas  
and equipment; order and stock all  
Department office supplies, and police  
forms, medical and bio-hazard equipment  
supplies; ship and receive mail and  
freight.  
PROGRAM REVENUES 145,400



BPAB010R  
 /16/97  
 3557

M U N I C I P A L I T Y O F A N C H O R A G E  
 1998 DEPARTMENT RANKING

DEPT: 24 -POLICE

DEPT BUDGET UNIT/  
 RANK PROGRAM

SL SVC  
 CODE LVL

PERSONNEL			PERSONAL	SUPPLIES	OTHER	DEBT	CAPITAL	TOTAL
FT	PT	T	SERVICE		SERVICES	SERVICE	OUTLAY	
1	0	0	54,830	50,000	7,800	0	0	112,630

26 4110-POLICE ADMINISTRATION CB 2 Plan and organize the deployment of  
 0296-Police Administration OF police personnel and equipment, direct  
 SOURCE OF FUNDS, THIS SVC LEVEL: 5 daily operations, establish policies,  
 TAX SUPPORT procedures and standards of performance,  
 and in the absence of the Chief assume  
 the duties of the Chief. The Deputy  
 Chief of Police is also the staff  
 support for the Public Safety Advisory  
 Commission.

PERSONNEL			PERSONAL	SUPPLIES	OTHER	DEBT	CAPITAL	TOTAL
T	PT	T	SERVICE		SERVICES	SERVICE	OUTLAY	
1	0	0	110,050	1,000	3,000	0	0	114,050

27 4310-COMMANDER STAFF SERVICES CB 2 Investigate only major allegations of  
 0298-Staff Services OF misconduct by police employees, citizen  
 SOURCE OF FUNDS, THIS SVC LEVEL: 3 complaints against police employees,  
 TAX SUPPORT review supervisor disciplinary action  
 reports; assist in preparing defense in  
 litigation against the department;  
 conduct inspections of police programs  
 to insure operational compliance  
 with police policies.

PERSONNEL			PERSONAL	SUPPLIES	OTHER	DEBT	CAPITAL	TOTAL
FT	PT	T	SERVICE		SERVICES	SERVICE	OUTLAY	
1	0	0	93,450	200	11,530	0	0	105,180

28 4610-PATROL COMMANDER CB 2 Supply the Patrol administrative  
 0300-Patrol Division OF office with adequate operational  
 SOURCE OF FUNDS, THIS SVC LEVEL: 4 supplies and equipment.  
 TAX SUPPORT

BPAB010R  
09/16/97  
163557

M U N I C I P A L I T Y O F A N C H O R A G E  
1998 DEPARTMENT RANKING

DEPT: 24 -POLICE  
DEPT BUDGET UNIT/  
RANK PROGRAM

SL SVC  
CODE LVL

PERSONNEL			PERSONAL SERVICE	SUPPLIES	OTHER SERVICES	DEBT SERVICE	CAPITAL OUTLAY	TOTAL
FT	PT	T						
0	0	0	0	22,750	0	0	0	22,750

29 4720-PERSON CRIMES CB 2 This level will allow investigation of  
0301-Detective Services OF 8% of assignable homicide, assault  
SOURCE OF FUNDS, THIS SVC LEVEL: 7 cases and sexual assault cases.  
TAX SUPPORT It will provide supervision for  
the Person Crimes section and would  
allow investigation of some missing  
person cases.

PERSONNEL			PERSONAL SERVICE	SUPPLIES	OTHER SERVICES	DEBT SERVICE	CAPITAL OUTLAY	TOTAL
FT	PT	T						
1	0	0	92,560	300	3,000	0	0	95,860

30 4770-CRIME LABORATORY CB 2 Photo-document crime scenes and evidence  
0301-Detective Services OF for presentation to court for homicide  
SOURCE OF FUNDS, THIS SVC LEVEL: 4 and major felony cases. Examine items  
TAX SUPPORT for latent prints. Compare and identify  
inked and latent prints. Testify in  
court regarding examinations.

PERSONNEL			PERSONAL SERVICE	SUPPLIES	OTHER SERVICES	DEBT SERVICE	CAPITAL OUTLAY	TOTAL
FT	PT	T						
1	0	0	62,740	14,400	3,020	0	11,500	91,660

31 4730-PROPERTY CRIMES CB 2 Provide supervision for Property Crimes  
0301-Detective Services OF Section. Handle citizens calls  
SOURCE OF FUNDS, THIS SVC LEVEL: 7 regarding cases. Provide clerical  
TAX SUPPORT supervision for typists, operators  
and pawn clerk.

PERSONNEL			PERSONAL SERVICE	SUPPLIES	OTHER SERVICES	DEBT SERVICE	CAPITAL OUTLAY	TOTAL
FT	PT	T						
2	0	0	172,000	200	1,500	0	0	173,700

BPAB010R  
 7/16/97  
 3557

M U N I C I P A L I T Y O F A N C H O R A G E  
 1998 DEPARTMENT RANKING

DEPT: 24 -POLICE

DEPT BUDGET UNIT/  
 RANK PROGRAM

SL SVC  
 CODE LVL

32 4980-FISCAL MANAGEMENT CB 2 Process all procurement documents,  
 0446-Technical Services OF reconcile all billings and invoices to  
 SOURCE OF FUNDS, THIS SVC LEVEL: 10 orders, process payment documents,  
 TAX SUPPORT reconcile in-house records to  
 Municipal financial statements. Run  
 weekly financial status reports for  
 Police commanders.

PERSONNEL			PERSONAL	SUPPLIES	OTHER	DEBT	CAPITAL	TOTAL
FT	PT	T	SERVICE		SERVICES	SERVICE	OUTLAY	
1	0	0	52,290	1,800	120	0	0	54,210

33 4320-PERSONNEL/PAYROLL CB 2 Personnel clerk maintains confidential  
 0298-Staff Services OF & sensitive files on all APD employees.  
 SOURCE OF FUNDS, THIS SVC LEVEL: 5 Tracks personnel actions such as  
 TAX SUPPORT evaluations, tuition assistance and  
 disciplinary actions. Performs needed  
 research on personnel issues. Meets  
 with judges on subpoenaed files.

PERSONNEL			PERSONAL	SUPPLIES	OTHER	DEBT	CAPITAL	TOTAL
FT	PT	T	SERVICE		SERVICES	SERVICE	OUTLAY	
1	0	0	54,790	500	400	0	0	55,690

34 4330-POLICE TRAINING CB 2 Coordinate minimum firearms training to  
 0298-Staff Services OF qualify sworn employees with firearms.  
 SOURCE OF FUNDS, THIS SVC LEVEL: 5 Establish firearms equipment standards  
 TAX SUPPORT and provide safety inspections of  
 firearms.  
 (SL reduced \$2020).

PERSONNEL			PERSONAL	SUPPLIES	OTHER	DEBT	CAPITAL	TOTAL
FT	PT	T	SERVICE		SERVICES	SERVICE	OUTLAY	
1	0	0	84,530	55,000	0	0	0	139,530

BPAB010R  
09/16/97  
163557

MUNICIPALITY OF ANCHORAGE  
1998 DEPARTMENT RANKING

DEPT: 24 -POLICE

DEPT	BUDGET UNIT/	SL	SVC
RANK	PROGRAM	CODE	LVL

35	4920-POLICE RECORDS	CB	2	Collect traffic fines at the front
	0446-Technical Services			OF counter and through the mail, request
	SOURCE OF FUNDS, THIS SVC LEVEL:		10	warrants for unpaid citations. Enter
	TAX SUPPORT			citation information into APSIN
				System and input and update these
				files. Conduct audits, entries and
				inquiries in APSIN/NCIC.

PERSONNEL			PERSONAL	SUPPLIES	OTHER	DEBT	CAPITAL	
FT	PT	T	SERVICE		SERVICES	SERVICE	OUTLAY	TOTAL
4	0	0	204,460	1,200	0	0	0	205,660

36	4640-WARRANTS	CB	2	Provide Night Court support to
	0300-Patrol Division			include: 1) police officer to guard
	SOURCE OF FUNDS, THIS SVC LEVEL:		6	Night Court, and serve some Domestic
	TAX SUPPORT			Violence Writs (DVW) during swing
				shift hours, and 2) an officer to input
				the backlog of traffic warrants and
				DVW into ASPIN.

PERSONNEL			PERSONAL	SUPPLIES	OTHER	DEBT	CAPITAL	
FT	PT	T	SERVICE		SERVICES	SERVICE	OUTLAY	TOTAL
2	0	0	193,720	1,000	1,500	0	0	196,220

37	4620-PATROL OPERATIONS	CO	7	Seventeen (17) officers to patrol the
	0300-Patrol Division			expanded Police Service Area (Hillside).
	SOURCE OF FUNDS, THIS SVC LEVEL:		9	
	TAX SUPPORT			

PERSONNEL			PERSONAL	SUPPLIES	OTHER	DEBT	CAPITAL	
FT	PT	T	SERVICE		SERVICES	SERVICE	OUTLAY	TOTAL
17	0	0	1,055,880	0	0	0	0	1,055,880

BPAB010R  
 07/16/97  
 3557

M U N I C I P A L I T Y O F A N C H O R A G E  
 1998 DEPARTMENT RANKING

DEPT: 24 -POLICE

DEPT	BUDGET UNIT/	SL	SVC
RANK	PROGRAM	CODE	LVL

38 4620-PATROL OPERATIONS  
 0300-Patrol Division  
 SOURCE OF FUNDS, THIS SVC LEVEL:  
 IGC SUPPORT

CO 9 As a result of the 1997 voter approval  
 OF of Propostion 3, the Anchorage Police  
 9 Department is now responsible for the  
 enforcement of the Municipal Code as it  
 relates to parking enforcement. Sworn  
 police officers are now delegated to  
 enforce this code. This service level  
 funds the added overtime of sworn  
 police officers.

PERSONNEL			PERSONAL	SUPPLIES	OTHER	DEBT	CAPITAL	TOTAL
FT	PT	T	SERVICE		SERVICES	SERVICE	OUTLAY	
0	0	0	200,000	0	0	0	0	200,000

39 4630-TRAFFIC ENFORCEMENT UNIT  
 0300-Patrol Division  
 SOURCE OF FUNDS, THIS SVC LEVEL:  
 TAX SUPPORT  
 PROGRAM REVENUES 102,000

CO 9 As a result of the 1997 approval of  
 OF Proposition 3, APD DWI hearings must  
 9 now be heard by the District Court  
 System rather than a hearing officer.  
 This service level collects the \$60 fee  
 that covers the additional admini-  
 strative costs.

PERSONNEL			PERSONAL	SUPPLIES	OTHER	DEBT	CAPITAL	TOTAL
FT	PT	T	SERVICE		SERVICES	SERVICE	OUTLAY	
0	0	0	0	0	0	0	0	0

40 4720-PERSON CRIMES  
 0301-Detective Services  
 SOURCE OF FUNDS, THIS SVC LEVEL:  
 TAX SUPPORT

CO 7 This level provides additional staff  
 OF resources to conduct criminal  
 7 investigations.

PERSONNEL			PERSONAL	SUPPLIES	OTHER	DEBT	CAPITAL	TOTAL
FT	PT	T	SERVICE		SERVICES	SERVICE	OUTLAY	
2	0	0	137,360	0	0	0	0	137,360

41 4730-PROPERTY CRIMES  
 0301-Detective Services  
 SOURCE OF FUNDS, THIS SVC LEVEL:  
 TAX SUPPORT

CO 7 This service level provides additional  
 OF staff resources to investigate  
 7 assignable property crime cases.

BPAB010R  
09/16/97  
163557

M U N I C I P A L I T Y O F A N C H O R A G E  
1998 DEPARTMENT RANKING

DEPT: 24 -POLICE  
DEPT BUDGET UNIT/  
RANK PROGRAM

SL SVC  
CODE LVL

PERSONNEL			PERSONAL SERVICE	SUPPLIES	OTHER SERVICES	DEBT SERVICE	CAPITAL OUTLAY	TOTAL
FT	PT	T						
3	0	0	186,560	0	0	0	0	186,560

42 4920-POLICE RECORDS CO 10 Increase of sworn officers  
0446-Technical Services OF necessitate additional clerks  
SOURCE OF FUNDS, THIS SVC LEVEL: 10 for typing and other clerical support.  
TAX SUPPORT

PERSONNEL			PERSONAL SERVICE	SUPPLIES	OTHER SERVICES	DEBT SERVICE	CAPITAL OUTLAY	TOTAL
FT	PT	T						
4	0	0	167,790	0	0	0	0	167,790

43 4980-FISCAL MANAGEMENT CO 10 Principal and interest of G.O. Bonds.  
0446-Technical Services OF  
SOURCE OF FUNDS, THIS SVC LEVEL: 10  
TAX SUPPORT

PERSONNEL			PERSONAL SERVICE	SUPPLIES	OTHER SERVICES	DEBT SERVICE	CAPITAL OUTLAY	TOTAL
FT	PT	T						
0	0	0	0	0	0	137,000	0	137,000

44 4980-FISCAL MANAGEMENT NA 9 Provide match funds required by the  
0446-Technical Services OF New COPS grant. Six new officers will  
SOURCE OF FUNDS, THIS SVC LEVEL: 10 be hired and trained as a result of  
TAX SUPPORT this funding.

PERSONNEL			PERSONAL SERVICE	SUPPLIES	OTHER SERVICES	DEBT SERVICE	CAPITAL OUTLAY	TOTAL
FT	PT	T						
0	0	0	0	0	281,940	0	0	281,940

BPAB010R  
 12/16/97  
 3557

MUNICIPALITY OF ANCHORAGE  
 1998 DEPARTMENT RANKING

DEPT: 24 -POLICE

DEPT RANK	BUDGET UNIT/ PROGRAM	SL CODE	SVC LVL	
45	4980-FISCAL MANAGEMENT 0446-Technical Services SOURCE OF FUNDS, THIS SVC LEVEL: TAX SUPPORT	NA	8 10	Provide funds required for personnel OF costs due to the expiration of the COPS 1995 Grant.

PERSONNEL			PERSONAL SERVICE	SUPPLIES	OTHER SERVICES	DEBT SERVICE	CAPITAL OUTLAY	TOTAL
FT	PT	T						
0	0	0	0	0	261,660	0	0	261,660

46	4910-TECH SERVICES ADMIN 0446-Technical Services SOURCE OF FUNDS, THIS SVC LEVEL: TAX SUPPORT	CO	2 2	Technical Services Division clerk is OF responsible for: processing bar files, alarms, responding to public inquiry, research projects & compiling data for special reports, coordinating meetings/ calendar for the division, maintain tickler files on grants, clerical support to Resource Mgt & Dispatch, preparing agenda & minutes for Domestic Violence & other committees.
	PROGRAM REVENUES		22,000	

PERSONNEL			PERSONAL SERVICE	SUPPLIES	OTHER SERVICES	DEBT SERVICE	CAPITAL OUTLAY	TOTAL
FT	PT	T						
1	0	0	52,500	500	860	0	0	53,860

47	4930-POLICE INFO/CRIME ANAL 0446-Technical Services SOURCE OF FUNDS, THIS SVC LEVEL: TAX SUPPORT	CO	2 5	Provide maintenance support for the APD OF report dial-in network. (SL reduced \$13,050).
----	-----------------------------------------------------------------------------------------------------------	----	--------	-------------------------------------------------------------------------------------------------

PERSONNEL			PERSONAL SERVICE	SUPPLIES	OTHER SERVICES	DEBT SERVICE	CAPITAL OUTLAY	TOTAL
FT	PT	T						
1	0	0	52,290	0	7,250	0	0	59,540

BPAB010R  
09/16/97  
163557

M U N I C I P A L I T Y O F A N C H O R A G E  
1998 DEPARTMENT RANKING

DEPT: 24 -POLICE

DEPT	BUDGET UNIT/	SL	SVC
RANK	PROGRAM	CODE	LVL

48	4710-CRIMINAL INVESTIGATION OP 0301-Detective Services	CO	2	Messenger to provide support to
	SOURCE OF FUNDS, THIS SVC LEVEL:		OF	Detectives and Patrol Divisions
	TAX SUPPORT		3	by transporting documents to Court, Prosecutor, District Attorney and the Alaska State Troopers. Pick up photo line-ups and pick up emergency supplies and equipment.

PERSONNEL			PERSONAL		OTHER	DEBT	CAPITAL	
FT	PT	T	SERVICE	SUPPLIES	SERVICES	SERVICE	OUTLAY	TOTAL
1	0	0	46,630	0	0	0	0	46,630

49	4750-CRIMES AGAINST CHILDREN 0301-Detective Services	CO	2	This level will allow the investigation
	SOURCE OF FUNDS, THIS SVC LEVEL:		OF	of 14% of assignable crimes against
	TAX SUPPORT		3	children cases.

PERSONNEL			PERSONAL		OTHER	DEBT	CAPITAL	
FT	PT	T	SERVICE	SUPPLIES	SERVICES	SERVICE	OUTLAY	TOTAL
1	0	0	96,850	0	0	0	0	96,850

50	4620-PATROL OPERATIONS 0300-Patrol Division	CO	2	Respond to criminal situations that
	SOURCE OF FUNDS, THIS SVC LEVEL:		OF	require a police officer. This includes
	TAX SUPPORT		9	reports of crimes after the fact, domestic disputes, threat of bodily harm, burglaries, thefts, and numerous varied requests for assistance.

PERSONNEL			PERSONAL		OTHER	DEBT	CAPITAL	
FT	PT	T	SERVICE	SUPPLIES	SERVICES	SERVICE	OUTLAY	TOTAL
13	0	0	1,146,920	0	12,500	0	0	1,159,420



BPAB010R  
 1/16/97  
 3557

M U N I C I P A L I T Y O F A N C H O R A G E  
 1998 DEPARTMENT RANKING

DEPT: 24 -POLICE

DEPT	BUDGET UNIT/	SL	SVC
RANK	PROGRAM	CODE	LVL

51	4940-PROPERTY & EVIDENCE 0446-Technical Services SOURCE OF FUNDS, THIS SVC LEVEL: TAX SUPPORT	CO	2 OF 6	Control the property and evidence inventory by maintaining records and distributing the existing evidence to investigations and the public.
----	--------------------------------------------------------------------------------------------------------	----	--------------	---------------------------------------------------------------------------------------------------------------------------------------------

PERSONNEL			PERSONAL	SUPPLIES	OTHER	DEBT	CAPITAL	TOTAL
FT	PT	T	SERVICE		SERVICES	SERVICE	OUTLAY	
7	0	0	354,680	5,850	3,000	0	0	363,530

---

52	4950-POLICE INFO SYSTEMS 0446-Technical Services SOURCE OF FUNDS, THIS SVC LEVEL: TAX SUPPORT	CO	2 OF 7	Answer calls-for-service that are of a non-emergency nature. Transfer call-for-service from call-takers to dispatchers thru the PLIMS computer system. Provide only minimum information needed to officers responding to calls-for-service.
----	--------------------------------------------------------------------------------------------------------	----	--------------	---------------------------------------------------------------------------------------------------------------------------------------------------------------------------------------------------------------------------------------------

PERSONNEL			PERSONAL	SUPPLIES	OTHER	DEBT	CAPITAL	TOTAL
FT	PT	T	SERVICE		SERVICES	SERVICE	OUTLAY	
12	0	0	681,750	2,000	0	0	0	683,750

---

53	4630-TRAFFIC ENFORCEMENT UNIT 0300-Patrol Division SOURCE OF FUNDS, THIS SVC LEVEL: TAX SUPPORT	CO	2 OF 9	Conduct Community Service Officer program. Assign non-emergency field tasks relating to: parking problems, lost, stolen/found property. Assist with traffic control, confidential courier to/from courts, and assist other sections through temporary duty assignments.
----	----------------------------------------------------------------------------------------------------------	----	--------------	-------------------------------------------------------------------------------------------------------------------------------------------------------------------------------------------------------------------------------------------------------------------------

PERSONNEL			PERSONAL	SUPPLIES	OTHER	DEBT	CAPITAL	TOTAL
T	PT	T	SERVICE		SERVICES	SERVICE	OUTLAY	
1	0	0	81,780	0	310	0	0	82,090

---

BPAB010R  
 09/16/97  
 163557

M U N I C I P A L I T Y O F A N C H O R A G E  
 1998 DEPARTMENT RANKING

DEPT: 24 -POLICE

DEPT BUDGET UNIT/  
 RANK PROGRAM

SL SVC  
 CODE LVL

54 4660-K-9 UNIT CO 2 Provide additional K-9 teams for  
 0300-Patrol Division OF building searches and suspect tracking.  
 SOURCE OF FUNDS, THIS SVC LEVEL: 3  
 TAX SUPPORT

PERSONNEL			PERSONAL	SUPPLIES	OTHER	DEBT	CAPITAL	TOTAL
FT	PT	T	SERVICE		SERVICES	SERVICE	OUTLAY	
2	0	0	152,740	0	0	0	0	152,740

55 4740-NARCOTICS ENFORCEMENT CO 2 Seize an additional 5% of drugs and  
 0301-Detective Services OF drug assets. To increase the  
 SOURCE OF FUNDS, THIS SVC LEVEL: 6 enforcement productivity directed at  
 TAX SUPPORT drug related offenses.

PERSONNEL			PERSONAL	SUPPLIES	OTHER	DEBT	CAPITAL	TOTAL
FT	PT	T	SERVICE		SERVICES	SERVICE	OUTLAY	
1	0	0	92,010	1,000	1,050	0	0	94,060

56 4340-PUBLIC RELATIONS CO 2 Educate and inform the public about  
 0298-Staff Services OF preventing crimes or falling victim to  
 SOURCE OF FUNDS, THIS SVC LEVEL: 4 crimes, how to report crimes to the  
 TAX SUPPORT police, and to inform the news media on  
 public safety matters. Programs include:  
 Crime Stoppers, Neighborhood Watch, Drug  
 Abuse, Safety Programs, Public Service  
 Announcements, Aircraft Watch.

PERSONNEL			PERSONAL	SUPPLIES	OTHER	DEBT	CAPITAL	TOTAL
FT	PT	T	SERVICE		SERVICES	SERVICE	OUTLAY	
1	0	0	71,810	5,000	2,000	0	0	78,810

BPAB010R  
 7/16/97  
 3557

M U N I C I P A L I T Y O F A N C H O R A G E  
 1998 DEPARTMENT RANKING

DEPT: 24 -POLICE

DEPT RANK	BUDGET UNIT/ PROGRAM	SL CODE	SVC LVL	
57	4980-FISCAL MANAGEMENT 0446-Technical Services	CO	3	Payment of 1998 Debt Service of G.O.
	SOURCE OF FUNDS, THIS SVC LEVEL:		OF	Bonds.
	TAX SUPPORT		10	

PERSONNEL			PERSONAL SERVICE	SUPPLIES	OTHER SERVICES	DEBT SERVICE	CAPITAL OUTLAY	TOTAL
FT	PT	T						
0	0	0	0	0	0	484,430	0	484,430

58	4980-FISCAL MANAGEMENT 0446-Technical Services	CO	7	APD department operational travel costs.
	SOURCE OF FUNDS, THIS SVC LEVEL:		OF	
	TAX SUPPORT		10	

PERSONNEL			PERSONAL SERVICE	SUPPLIES	OTHER SERVICES	DEBT SERVICE	CAPITAL OUTLAY	TOTAL
FT	PT	T						
0	0	0	0	0	31,620	0	0	31,620

59	4720-PERSON CRIMES 0301-Detective Services	CO	3	This level will provide individual
	SOURCE OF FUNDS, THIS SVC LEVEL:		OF	command of the Homicide/Assault, Crimes
	TAX SUPPORT		7	Against Children, and Sexual Assault
				units.

PERSONNEL			PERSONAL SERVICE	SUPPLIES	OTHER SERVICES	DEBT SERVICE	CAPITAL OUTLAY	TOTAL
FT	PT	T						
1	0	0	112,800	200	1,000	0	0	114,000

60	4110-POLICE ADMINISTRATION 0296-Police Administration	CO	3	Maintain the administrative documents
	SOURCE OF FUNDS, THIS SVC LEVEL:		OF	and the scheduling of the Chief of
	TAX SUPPORT		5	Police. This position is the first
				contact person for public and
				outside agencies with the Administrative
				staff.

PERSONNEL			PERSONAL SERVICE	SUPPLIES	OTHER SERVICES	DEBT SERVICE	CAPITAL OUTLAY	TOTAL
FT	PT	T						
1	0	0	40,750	0	200	0	0	40,950

BPAB010R  
09/16/97  
163557

M U N I C I P A L I T Y O F A N C H O R A G E  
1998 DEPARTMENT RANKING

DEPT: 24 -POLICE

DEPT RANK	BUDGET UNIT/ PROGRAM	SL CODE	SVC LVL	
61	4330-POLICE TRAINING 0298-Staff Services SOURCE OF FUNDS, THIS SVC LEVEL: TAX SUPPORT	CO	3 OF 5	Coordinate minimum training on mandated topics, such as first aid, and the use of force for sworn personnel. (SL reduced \$1000).

PERSONNEL			PERSONAL SERVICE	SUPPLIES	OTHER SERVICES	DEBT SERVICE	CAPITAL OUTLAY	TOTAL
FT	PT	T						
1	0	0	89,250	28,300	5,000	0	0	122,550

---

62	4710-CRIMINAL INVESTIGATION OP 0301-Detective Services SOURCE OF FUNDS, THIS SVC LEVEL: TAX SUPPORT	CO	3 OF 3	Monies needed to aid in on-going investigations, paying informants, other emergency investigation expenses, and additional communications costs.
----	--------------------------------------------------------------------------------------------------------------	----	--------------	--------------------------------------------------------------------------------------------------------------------------------------------------

PERSONNEL			PERSONAL SERVICE	SUPPLIES	OTHER SERVICES	DEBT SERVICE	CAPITAL OUTLAY	TOTAL
FT	PT	T						
0	0	0	0	0	8,000	0	0	8,000

---

63	4640-WARRANTS 0300-Patrol Division SOURCE OF FUNDS, THIS SVC LEVEL: TAX SUPPORT	CO	3 OF 6	Serve outstanding criminal and serious traffic warrants for arrest.
----	------------------------------------------------------------------------------------------	----	--------------	---------------------------------------------------------------------

PERSONNEL			PERSONAL SERVICE	SUPPLIES	OTHER SERVICES	DEBT SERVICE	CAPITAL OUTLAY	TOTAL
FT	PT	T						
2	0	0	149,940	0	850	0	0	150,790

---

64	4950-POLICE INFO SYSTEMS 0446-Technical Services SOURCE OF FUNDS, THIS SVC LEVEL: TAX SUPPORT	CO	3 OF 7	Answer calls-for-service that are both emergency and non-emergency nature. Provide adequate information to the officers responding to calls. Provide information requested by officers, such as warrant checks, wreckers, etc. Most calls-for-service would be entered into the PLIMS computer system.
----	--------------------------------------------------------------------------------------------------------	----	--------------	--------------------------------------------------------------------------------------------------------------------------------------------------------------------------------------------------------------------------------------------------------------------------------------------------------

BPAB010R  
 7/16/97  
 3557

M U N I C I P A L I T Y O F A N C H O R A G E  
 1998 DEPARTMENT RANKING

DEPT: 24 -POLICE  
 DEPT BUDGET UNIT/  
 RANK PROGRAM

SL SVC  
 CODE LVL

PERSONNEL			PERSONAL	SUPPLIES	OTHER	DEBT	CAPITAL	TOTAL
FT	PT	T	SERVICE		SERVICES	SERVICE	OUTLAY	
4	0	0	187,650	1,000	0	0	0	188,650

65	4320-PERSONNEL/PAYROLL 0298-Staff Services SOURCE OF FUNDS, THIS SVC LEVEL: TAX SUPPORT				CO	3	OF	Payroll clerk processes timecards for APD personnel and tracks overtime and leave requests. Troubleshoots payroll records and pay discrepancies. Researches payroll problems, and performs payroll audits.
----	--------------------------------------------------------------------------------------------------	--	--	--	----	---	----	------------------------------------------------------------------------------------------------------------------------------------------------------------------------------------------------------------

PERSONNEL			PERSONAL	SUPPLIES	OTHER	DEBT	CAPITAL	TOTAL
FT	PT	T	SERVICE		SERVICES	SERVICE	OUTLAY	
1	0	0	54,790	300	400	0	0	55,490

66	4620-PATROL OPERATIONS 0300-Patrol Division SOURCE OF FUNDS, THIS SVC LEVEL: TAX SUPPORT				CO	3	OF	Respond to additional criminal situations that require a Police Officer to include prowlers, trespassers public disturbances, drunkenness, vandalism, and suspicious persons. Organize and deploy the resources of the Reserve Officers.
----	---------------------------------------------------------------------------------------------------	--	--	--	----	---	----	------------------------------------------------------------------------------------------------------------------------------------------------------------------------------------------------------------------------------------------

PERSONNEL			PERSONAL	SUPPLIES	OTHER	DEBT	CAPITAL	TOTAL
FT	PT	T	SERVICE		SERVICES	SERVICE	OUTLAY	
12	0	0	1,006,130	0	12,500	0	0	1,018,630

67	4610-PATROL COMMANDER 0300-Patrol Division SOURCE OF FUNDS, THIS SVC LEVEL: TAX SUPPORT				CO	3	OF	Maintain the records for the Police Reserve Program and other administrative documents involving the management and control of deploying large numbers of police officers, warrant officers, and K-9 officers. Coordinate court appearances between department staff and the court system.
----	--------------------------------------------------------------------------------------------------	--	--	--	----	---	----	--------------------------------------------------------------------------------------------------------------------------------------------------------------------------------------------------------------------------------------------------------------------------------------------

PERSONNEL			PERSONAL	SUPPLIES	OTHER	DEBT	CAPITAL	TOTAL
FT	PT	T	SERVICE		SERVICES	SERVICE	OUTLAY	
2	0	0	135,450	0	500	0	0	135,950

BPAB010R  
 09/16/97  
 163557

M U N I C I P A L I T Y O F A N C H O R A G E  
 1998 DEPARTMENT RANKING

DEPT: 24 -POLICE

DEPT	BUDGET UNIT/	SL	SVC
RANK	PROGRAM	CODE	LVL

68	4750-CRIMES AGAINST CHILDREN	CO	3	This level will allow investigation of 14% of the assignable crimes against children cases.
	0301-Detective Services		OF	
	SOURCE OF FUNDS, THIS SVC LEVEL: TAX SUPPORT		3	

PERSONNEL			PERSONAL	SUPPLIES	OTHER	DEBT	CAPITAL	TOTAL
FT	PT	T	SERVICE		SERVICES	SERVICE	OUTLAY	
1	0	0	86,190	0	0	0	0	86,190

69	4920-POLICE RECORDS	CO	3	Respond to requests for reports from insurance companies, citizens, Municipal agencies, other law enforcement agencies attorneys, and federal agencies.
	0446-Technical Services		OF	
	SOURCE OF FUNDS, THIS SVC LEVEL: TAX SUPPORT		10	

PERSONNEL			PERSONAL	SUPPLIES	OTHER	DEBT	CAPITAL	TOTAL
FT	PT	T	SERVICE		SERVICES	SERVICE	OUTLAY	
6	0	0	292,650	2,500	0	0	0	295,150

70	4940-PROPERTY & EVIDENCE	CO	3	Enter criminal evidence and property data into PLIMS in order to maintain an accurate inventory and status. Mail out notices to the public for return of property. Answer all incoming phone inquiries and schedule appointments to release property to the public and other outside agencies.
	0446-Technical Services		OF	
	SOURCE OF FUNDS, THIS SVC LEVEL: TAX SUPPORT		6	

PERSONNEL			PERSONAL	SUPPLIES	OTHER	DEBT	CAPITAL	TOTAL
FT	PT	T	SERVICE		SERVICES	SERVICE	OUTLAY	
1	0	0	42,610	0	1,000	0	0	43,610

BPAB010R  
 7/16/97  
 3557

M U N I C I P A L I T Y O F A N C H O R A G E  
 1998 DEPARTMENT RANKING

DEPT: 24 -POLICE

DEPT BUDGET UNIT/  
 RANK PROGRAM

SL SVC  
 CODE LVL

71 4740-NARCOTICS ENFORCEMENT CO 3 Provide command supervision for the  
 0301-Detective Services OF Narcotics Section.  
 SOURCE OF FUNDS, THIS SVC LEVEL: 6  
 TAX SUPPORT

PERSONNEL			PERSONAL	SUPPLIES	OTHER	DEBT	CAPITAL	TOTAL
FT	PT	T	SERVICE					
1	0	0	116,700	1,000	1,050	0	0	118,750

72 4310-COMMANDER STAFF SERVICES CO 3 Investigate allegations of inappropriate  
 0298-Staff Services OF conduct of police employees, citizen  
 SOURCE OF FUNDS, THIS SVC LEVEL: 3 complaints against employees, review  
 TAX SUPPORT supervisor disciplinary action reports,  
 assist in defense in litigation cases  
 against the department, and conduct  
 inspections of police programs to en-  
 sure operational compliance with police  
 policies. Conduct all investigations  
 and reviews.

PERSONNEL			PERSONAL	SUPPLIES	OTHER	DEBT	CAPITAL	TOTAL
FT	PT	T	SERVICE					
1	0	0	81,800	200	600	0	0	82,600

73 4770-CRIME LABORATORY CO 3 Aid in solving crimes by producing  
 0301-Detective Services OF crime scene photos and other  
 SOURCE OF FUNDS, THIS SVC LEVEL: 4 evidentiary identifying photographs.  
 TAX SUPPORT

PERSONNEL			PERSONAL	SUPPLIES	OTHER	DEBT	CAPITAL	TOTAL
FT	PT	T	SERVICE					
1	0	0	45,470	8,000	2,000	0	0	55,470

BPAB010R  
09/16/97  
163557

M U N I C I P A L I T Y O F A N C H O R A G E  
1998 DEPARTMENT RANKING

DEPT: 24 -POLICE

DEPT BUDGET UNIT/  
RANK PROGRAM

SL SVC  
CODE LVL

74 4730-PROPERTY CRIMES CO 3 This level would allow the investigation  
0301-Detective Services OF of 10% of assignable property crime  
SOURCE OF FUNDS, THIS SVC LEVEL: 7 cases and clerical support.  
TAX SUPPORT

PERSONNEL			PERSONAL	SUPPLIES	OTHER	DEBT	CAPITAL	TOTAL
FT	PT	T	SERVICE		SERVICES	SERVICE	OUTLAY	
2	0	0	141,460	0	1,500	0	0	142,960

75 4930-POLICE INFO/CRIME ANAL CO 3 UPS (Uninterruptable Power Supply)  
0446-Technical Services OF maintenance.  
SOURCE OF FUNDS, THIS SVC LEVEL: 5  
TAX SUPPORT

PERSONNEL			PERSONAL	SUPPLIES	OTHER	DEBT	CAPITAL	TOTAL
FT	PT	T	SERVICE		SERVICES	SERVICE	OUTLAY	
0	0	0	0	0	5,000	0	0	5,000

76 4630-TRAFFIC ENFORCEMENT UNIT CO 3 Conduct Community Service Officer  
0300-Patrol Division OF program. Assign non-emergency field  
SOURCE OF FUNDS, THIS SVC LEVEL: 9 tasks relating to: lost, stolen or  
TAX SUPPORT found property, assist with traffic  
control, confidential courier to/from  
courts, and assist other sections  
through temporary duty assignments.

PERSONNEL			PERSONAL	SUPPLIES	OTHER	DEBT	CAPITAL	TOTAL
FT	PT	T	SERVICE		SERVICES	SERVICE	OUTLAY	
1	0	0	66,290	0	310	0	0	66,600



BPAB010R  
 7/16/97  
 3557

M U N I C I P A L I T Y O F A N C H O R A G E  
 1998 DEPARTMENT RANKING

DEPT: 24 -POLICE

DEPT	BUDGET UNIT/	SL	SVC
RANK	PROGRAM	CODE	LVL

77	4660-K-9 UNIT	CO	3	Provide additional K-9 officers to
	0300-Patrol Division		OF	maintain current year level of service.
	SOURCE OF FUNDS, THIS SVC LEVEL:		3	
	TAX SUPPORT			

PERSONNEL			PERSONAL		OTHER	DEBT	CAPITAL	
FT	PT	T	SERVICE	SUPPLIES	SERVICES	SERVICE	OUTLAY	TOTAL
1	0	0	81,060	0	0	0	0	81,060

78	4340-PUBLIC RELATIONS	CO	4	Plan, organize, coordinate and train
	0298-Staff Services		OF	Neighborhood Crime Watch groups in
	SOURCE OF FUNDS, THIS SVC LEVEL:		4	various neighborhoods. Facilitate crime
	TAX SUPPORT			reduction activities between the
				Neighborhood Watch groups and public
				safety agencies. Coordinate and
				release information to the public on
				behalf of the department. Liaison
				between APD and the media.
				(SL reduced \$2190).

PERSONNEL			PERSONAL		OTHER	DEBT	CAPITAL	
FT	PT	T	SERVICE	SUPPLIES	SERVICES	SERVICE	OUTLAY	TOTAL
1	0	0	61,020	0	73,000	0	0	134,020

79	4110-POLICE ADMINISTRATION	CO	4	Support for the Staff Inspec-
	0296-Police Administration		OF	tions unit and backup for the Chief's
	SOURCE OF FUNDS, THIS SVC LEVEL:		5	secretary.
	TAX SUPPORT			

PERSONNEL			PERSONAL		OTHER	DEBT	CAPITAL	
FT	PT	T	SERVICE	SUPPLIES	SERVICES	SERVICE	OUTLAY	TOTAL
1	0	0	54,920	0	200	0	0	55,120

BPAB010R  
09/16/97  
163557

M U N I C I P A L I T Y O F A N C H O R A G E  
1998 DEPARTMENT RANKING

DEPT: 24 -POLICE

DEPT BUDGET UNIT/  
RANK PROGRAM

SL SVC  
CODE LVL

80 4720-PERSON CRIMES CO 4 This level would allow investigation of  
0301-Detective Services OF 8% of assignable person crime cases.  
SOURCE OF FUNDS, THIS SVC LEVEL: 7  
TAX SUPPORT

PERSONNEL			PERSONAL	SUPPLIES	OTHER	DEBT	CAPITAL	TOTAL
FT	PT	T	SERVICE					
1	0	0	92,560	200	0	0	0	92,760

81 4730-PROPERTY CRIMES CO 4 This level will provide independent  
0301-Detective Services OF supervision of the Burglary Unit.  
SOURCE OF FUNDS, THIS SVC LEVEL: 7  
TAX SUPPORT

PERSONNEL			PERSONAL	SUPPLIES	OTHER	DEBT	CAPITAL	TOTAL
FT	PT	T	SERVICE					
1	0	0	102,000	0	1,000	0	0	103,000

82 4740-NARCOTICS ENFORCEMENT CO 4 Broaden the scope of enforcement  
0301-Detective Services OF activities to include investigation of  
SOURCE OF FUNDS, THIS SVC LEVEL: 6 mid-level drug dealers and conduct  
TAX SUPPORT subsequent prosecutions at the State  
level. Seize an additional 5% of  
drugs and drug assets. Increase by  
10% the enforcement efforts aimed at  
vice related offenses.

PERSONNEL			PERSONAL	SUPPLIES	OTHER	DEBT	CAPITAL	TOTAL
FT	PT	T	SERVICE					
1	0	0	51,400	0	1,050	0	0	52,450

BPAB010R  
 7/16/97  
 3557

M U N I C I P A L I T Y O F A N C H O R A G E  
 1998 DEPARTMENT RANKING

DEPT: 24 -POLICE

DEPT	BUDGET UNIT/	SL	SVC
RANK	PROGRAM	CODE	LVL

83	4640-WARRANTS 0300-Patrol Division	CO	4	Reduce backlog of outstanding
	SOURCE OF FUNDS, THIS SVC LEVEL:		OF	criminal and serious traffic warrants
	TAX SUPPORT		6	for arrest.

PERSONNEL			PERSONAL	SUPPLIES	OTHER	DEBT	CAPITAL	TOTAL
FT	PT	T	SERVICE		SERVICES	SERVICE	OUTLAY	
2	0	0	111,990	0	850	0	0	112,840

84	4950-POLICE INFO SYSTEMS 0446-Technical Services	CO	4	Plan and organize 24-hour operation
	SOURCE OF FUNDS, THIS SVC LEVEL:		OF	of the Police Emergency Communications
	TAX SUPPORT		7	Center. Coordinate the Communications
				Section so that it dovetails with
				the needs of other sections within the
				department. Handle personnel issues
				that evolve from the employees assigned
				to the Section.

PERSONNEL			PERSONAL	SUPPLIES	OTHER	DEBT	CAPITAL	TOTAL
FT	PT	T	SERVICE		SERVICES	SERVICE	OUTLAY	
3	0	0	217,320	1,000	1,000	0	0	219,320

85	4610-PATROL COMMANDER 0300-Patrol Division	CO	4	Manage the inventory of vehicles
	SOURCE OF FUNDS, THIS SVC LEVEL:		OF	impounded for DWI offenses.
	TAX SUPPORT		4	Coordinates with the Municipal
				Prosecutor those vehicles that are to
				be forfeited. Oversee and coordinate
				the towing contract. (SL reduced \$740).

PERSONNEL			PERSONAL	SUPPLIES	OTHER	DEBT	CAPITAL	TOTAL
FT	PT	T	SERVICE		SERVICES	SERVICE	OUTLAY	
2	0	0	99,660	0	24,500	0	0	124,160

BPAB010R  
09/16/97  
163557

M U N I C I P A L I T Y O F A N C H O R A G E  
1998 DEPARTMENT RANKING

DEPT: 24 -POLICE

DEPT BUDGET UNIT/  
RANK PROGRAM

SL SVC  
CODE LVL

86 4920-POLICE RECORDS  
0446-Technical Services  
SOURCE OF FUNDS, THIS SVC LEVEL:  
TAX SUPPORT

CO 4 Transcribe and type police reports  
OF and reduce the current typing backlog  
10 of tapes. Investigators cannot work  
on cases until the tapes are transcribed  
and forwarded to the investigating  
units. Tapes and reports must be  
completed and available for prosecutors  
and the courts within 1 to 10 days  
from date of arrest.

PERSONNEL			PERSONAL	SUPPLIES	OTHER	DEBT	CAPITAL	TOTAL
FT	PT	T	SERVICE		SERVICES	SERVICE	OUTLAY	
5	0	0	246,910	0	0	0	0	246,910

87 4940-PROPERTY & EVIDENCE  
0446-Technical Services  
SOURCE OF FUNDS, THIS SVC LEVEL:  
TAX SUPPORT

CO 4 Reduce the backlog of disposable  
OF property in order to operate the storage  
6 program within the existing allocated  
space.

PERSONNEL			PERSONAL	SUPPLIES	OTHER	DEBT	CAPITAL	TOTAL
FT	PT	T	SERVICE		SERVICES	SERVICE	OUTLAY	
0	0	0	0	0	0	0	0	0

88 4620-PATROL OPERATIONS  
0300-Patrol Division  
SOURCE OF FUNDS, THIS SVC LEVEL:  
TAX SUPPORT

CO 4 Respond to additional criminal  
OF situations involving drug related  
9 street crimes that occur in a  
neighborhood setting.  
(SL reduced \$380).

PERSONNEL			PERSONAL	SUPPLIES	OTHER	DEBT	CAPITAL	TOTAL
FT	PT	T	SERVICE		SERVICES	SERVICE	OUTLAY	
8	0	0	595,270	0	12,500	0	0	607,770

89 4960-RESOURCE MANAGEMENT  
0446-Technical Services  
SOURCE OF FUNDS, THIS SVC LEVEL:  
TAX SUPPORT

CO 3 The development, negotiation, and  
OF administration of contracts necessary  
4 to meet the requirements of the  
department for support service, i.e.,  
DWI blood testing, laundry/sanitation,  
towing, facility custodial services,  
and prisoner services.

BPAB010R  
 7/16/97  
 3557

M U N I C I P A L I T Y O F A N C H O R A G E  
 1998 DEPARTMENT RANKING

DEPT: 24 -POLICE  
 DEPT BUDGET UNIT/  
 RANK PROGRAM

SL SVC  
 CODE LVL

PERSONNEL			PERSONAL	SUPPLIES	OTHER	DEBT	CAPITAL	TOTAL
FT	PT	T	SERVICE		SERVICES	SERVICE	OUTLAY	
0	0	0	0	176,620	1,509,000	0	0	1,685,620

90 4770-CRIME LABORATORY  
 0301-Detective Services  
 SOURCE OF FUNDS, THIS SVC LEVEL:  
 TAX SUPPORT

CO 4 This service level necessary to maintain  
 OF the fingerprint system (AFIS)  
 4 (SL reduced \$250).

PERSONNEL			PERSONAL	SUPPLIES	OTHER	DEBT	CAPITAL	TOTAL
FT	PT	T	SERVICE		SERVICES	SERVICE	OUTLAY	
0	0	0	0	0	8,350	0	0	8,350

91 4980-FISCAL MANAGEMENT  
 0446-Technical Services  
 SOURCE OF FUNDS, THIS SVC LEVEL:  
 TAX SUPPORT

CO 4 Provide for match required by grants.  
 OF  
 10

PERSONNEL			PERSONAL	SUPPLIES	OTHER	DEBT	CAPITAL	TOTAL
FT	PT	T	SERVICE		SERVICES	SERVICE	OUTLAY	
0	0	0	0	0	627,270	0	0	627,270

92 4320-PERSONNEL/PAYROLL  
 0298-Staff Services  
 SOURCE OF FUNDS, THIS SVC LEVEL:  
 TAX SUPPORT

CO 4 Perform background investigations for  
 OF police applicants, administer applicant  
 5 testing procedures and recruit  
 qualified minority and women applicants.

PERSONNEL			PERSONAL	SUPPLIES	OTHER	DEBT	CAPITAL	TOTAL
FT	PT	T	SERVICE		SERVICES	SERVICE	OUTLAY	
2	0	0	169,760	1,500	0	0	0	171,260

BPAB010R  
09/16/97  
163557

M U N I C I P A L I T Y O F A N C H O R A G E  
1998 DEPARTMENT RANKING

DEPT: 24 -POLICE

DEPT BUDGET UNIT/  
RANK PROGRAM

SL SVC  
CODE LVL

93 4630-TRAFFIC ENFORCEMENT UNIT CO 4 Community Service Officer program  
0300-Patrol Division OF assigns non-emergency field tasks  
SOURCE OF FUNDS, THIS SVC LEVEL: 9 relating to lost, stolen or found  
TAX SUPPORT property. Assists traffic control.  
Provides personnel to perform  
confidential courier to and from the  
courts. Assists other sections in need  
of temporary duty personnel.

PERSONNEL			PERSONAL	SUPPLIES	OTHER	DEBT	CAPITAL	TOTAL
FT	PT	T	SERVICE		SERVICES	SERVICE	OUTLAY	
1	0	0	66,290	0	310	0	0	66,600

94 4330-POLICE TRAINING CO 4 Improve the skills of APD non sworn  
0298-Staff Services OF personnel by coordinating all department  
SOURCE OF FUNDS, THIS SVC LEVEL: 5 training, both inservice internal  
TAX SUPPORT training and training offered by  
other agencies.

PERSONNEL			PERSONAL	SUPPLIES	OTHER	DEBT	CAPITAL	TOTAL
FT	PT	T	SERVICE		SERVICES	SERVICE	OUTLAY	
1	0	0	79,530	2,990	1,170	0	0	83,690

95 4920-POLICE RECORDS CO 5 Two positions to assist in the  
0446-Technical Services OF transcription and typing of police  
SOURCE OF FUNDS, THIS SVC LEVEL: 10 reports.  
TAX SUPPORT

PERSONNEL			PERSONAL	SUPPLIES	OTHER	DEBT	CAPITAL	TOTAL
FT	PT	T	SERVICE		SERVICES	SERVICE	OUTLAY	
2	0	0	101,900	0	0	0	0	101,900

BPAB010R  
 7/16/97  
 3557

M U N I C I P A L I T Y O F A N C H O R A G E  
 1998 DEPARTMENT RANKING

DEPT: 24 -POLICE

DEPT RANK	BUDGET UNIT/ PROGRAM	SL CODE	SVC LVL	
96	4950-POLICE INFO SYSTEMS 0446-Technical Services SOURCE OF FUNDS, THIS SVC LEVEL: TAX SUPPORT	CO	5	Provide information in a timely manner to officers handling calls-for-service.
			7	Examples would be warrant checks, wreckers at accident scenes, citizen requests received in the field. All calls would be entered into the departments PLIMS computer system.

PERSONNEL			PERSONAL SERVICE	SUPPLIES	OTHER SERVICES	DEBT SERVICE	CAPITAL OUTLAY	TOTAL
FT	PT	T						
4	0	0	221,250	0	0	0	0	221,250

97	4640-WARRANTS 0300-Patrol Division SOURCE OF FUNDS, THIS SVC LEVEL: TAX SUPPORT	CO	5	Return the unit to the current level of service by reducing the backlog in outstanding criminal and serious traffic warrants.
			6	

PERSONNEL			PERSONAL SERVICE	SUPPLIES	OTHER SERVICES	DEBT SERVICE	CAPITAL OUTLAY	TOTAL
FT	PT	T						
1	0	0	47,950	0	850	0	0	48,800

98	4720-PERSON CRIMES 0301-Detective Services SOURCE OF FUNDS, THIS SVC LEVEL: TAX SUPPORT	CO	5	Individual supervision of the Sexual Assault unit would be provided.
			7	

PERSONNEL			PERSONAL SERVICE	SUPPLIES	OTHER SERVICES	DEBT SERVICE	CAPITAL OUTLAY	TOTAL
FT	PT	T						
1	0	0	95,840	0	1,000	0	0	96,840

BPAB010R  
09/16/97  
163557

MUNICIPALITY OF ANCHORAGE  
1998 DEPARTMENT RANKING

DEPT: 24 -POLICE

DEPT RANK	BUDGET UNIT/ PROGRAM	SL CODE	SVC LVL	
99	4980-FISCAL MANAGEMENT 0446-Technical Services SOURCE OF FUNDS, THIS SVC LEVEL: TAX SUPPORT	CO	5 OF 10	Repair and maintenance contracts for the entire Department. (Non-building)

PERSONNEL			PERSONAL SERVICE	SUPPLIES	OTHER SERVICES	DEBT SERVICE	CAPITAL OUTLAY	TOTAL
FT	PT	T						
0	0	0	0	0	81,080	0	10,000	91,080

100	4740-NARCOTICS ENFORCEMENT 0301-Detective Services SOURCE OF FUNDS, THIS SVC LEVEL: TAX SUPPORT	CO	5 OF 6	Provide direct supervision of the General Investigations Unit and the street level enforcement function of the Narcotics section.
-----	----------------------------------------------------------------------------------------------------------	----	--------------	-----------------------------------------------------------------------------------------------------------------------------------

PERSONNEL			PERSONAL SERVICE	SUPPLIES	OTHER SERVICES	DEBT SERVICE	CAPITAL OUTLAY	TOTAL
FT	PT	T						
1	0	0	89,340	0	0	0	0	89,340

101	4320-PERSONNEL/PAYROLL 0298-Staff Services SOURCE OF FUNDS, THIS SVC LEVEL: TAX SUPPORT	CO	5 OF 5	Cost of processing applicants for hire as police officers for a 1997 academy. This level covers cost for an academy to replace retired and resigned sworn personnel. Performs background investigations for police applicants, administers applicant testing procedures and recruits qualified applicants. (SL reduced \$870).
-----	--------------------------------------------------------------------------------------------------	----	--------------	--------------------------------------------------------------------------------------------------------------------------------------------------------------------------------------------------------------------------------------------------------------------------------------------------------------------------------

PERSONNEL			PERSONAL SERVICE	SUPPLIES	OTHER SERVICES	DEBT SERVICE	CAPITAL OUTLAY	TOTAL
FT	PT	T						
0	0	0	0	600	53,000	0	0	53,600

102	4630-TRAFFIC ENFORCEMENT UNIT 0300-Patrol Division SOURCE OF FUNDS, THIS SVC LEVEL: TAX SUPPORT	CO	5 OF 9	Conduct Community Service Officer program. Assign non-emergency field tasks relating to lost, stolen or found property; assist traffic control, prepare suspect photo lineups, shuttle police vehicles for repair; and assist other sections in need of temporary duty personnel.
-----	----------------------------------------------------------------------------------------------------------	----	--------------	-----------------------------------------------------------------------------------------------------------------------------------------------------------------------------------------------------------------------------------------------------------------------------------



BPAB010R  
 08/16/97  
 3557

M U N I C I P A L I T Y O F A N C H O R A G E  
 1998 DEPARTMENT RANKING

DEPT: 24 -POLICE  
 DEPT BUDGET UNIT/  
 RANK PROGRAM

SL SVC  
 CODE LVL

PERSONNEL			PERSONAL SERVICE	SUPPLIES	OTHER SERVICES	DEBT SERVICE	CAPITAL OUTLAY	TOTAL
FT	PT	T						
1	0	0	60,930	0	310	0	0	61,240

103 4620-PATROL OPERATIONS CO 5 Respond to additional criminal  
 0300-Patrol Division OF situations involving drug related  
 SOURCE OF FUNDS, THIS SVC LEVEL: 9 street crimes that occur in a  
 TAX SUPPORT neighborhood setting. (SL reduced \$370).

PERSONNEL			PERSONAL SERVICE	SUPPLIES	OTHER SERVICES	DEBT SERVICE	CAPITAL OUTLAY	TOTAL
FT	PT	T						
8	0	0	654,060	0	12,310	0	0	666,370

104 4330-POLICE TRAINING CO 5 Develop, evaluate, and implement new  
 0298-Staff Services OF operational policies and procedures for  
 SOURCE OF FUNDS, THIS SVC LEVEL: 5 the Department. Plan, organize, and  
 TAX SUPPORT coordinate delivery of training for  
 employee career advancement.

PERSONNEL			PERSONAL SERVICE	SUPPLIES	OTHER SERVICES	DEBT SERVICE	CAPITAL OUTLAY	TOTAL
FT	PT	T						
1	0	0	123,080	0	0	0	0	123,080

105 4940-PROPERTY & EVIDENCE CO 5 Supervise the Techs and Clerks.  
 0446-Technical Services OF Oversee destruction timetables and  
 SOURCE OF FUNDS, THIS SVC LEVEL: 6 compliance with Municipal, state and  
 TAX SUPPORT federal law. Conduct weekly and monthly  
 random checks to assure all procedures  
 are being followed.

PERSONNEL			PERSONAL SERVICE	SUPPLIES	OTHER SERVICES	DEBT SERVICE	CAPITAL OUTLAY	TOTAL
FT	PT	T						
1	0	0	69,070	0	0	0	0	69,070

BPAB010R  
09/16/97  
163557

M U N I C I P A L I T Y O F A N C H O R A G E  
1998 DEPARTMENT RANKING

DEPT: 24 -POLICE

DEPT BUDGET UNIT/  
RANK PROGRAM

SL SVC  
CODE LVL

106 4960-RESOURCE MANAGEMENT CO 4 Work with Bering Street Maintenance to  
0446-Technical Services OF procure and manage the Anchorage  
SOURCE OF FUNDS, THIS SVC LEVEL: 4 Police Department vehicle fleet.  
TAX SUPPORT

PERSONNEL			PERSONAL	SUPPLIES	OTHER	DEBT	CAPITAL	TOTAL
FT	PT	T	SERVICE					
0	0	0	0	0	130,000	0	0	130,000

107 4110-POLICE ADMINISTRATION CO 5 Purchase and administration of Hepatitis  
0296-Police Administration OF A & B vaccine for high risk APD  
SOURCE OF FUNDS, THIS SVC LEVEL: 5 personnel.  
TAX SUPPORT

PERSONNEL			PERSONAL	SUPPLIES	OTHER	DEBT	CAPITAL	TOTAL
FT	PT	T	SERVICE					
0	0	0	0	16,820	0	0	0	16,820

108 4950-POLICE INFO SYSTEMS CO 6 Enhance supervision and provide training  
0446-Technical Services OF of Dispatch personnel. Respond to  
SOURCE OF FUNDS, THIS SVC LEVEL: 7 Prosecutor's and officers' requests for  
TAX SUPPORT copies of 911 tapes. Support expanded  
police service area and increased patrol  
officers.

PERSONNEL			PERSONAL	SUPPLIES	OTHER	DEBT	CAPITAL	TOTAL
FT	PT	T	SERVICE					
3	0	0	175,580	0	0	0	0	175,580

109 4920-POLICE RECORDS CO 6 One position to assist in the tran-  
0446-Technical Services OF scription and typing of police reports.  
SOURCE OF FUNDS, THIS SVC LEVEL: 10  
TAX SUPPORT

BPAB010R  
 12/16/97  
 3557

MUNICIPALITY OF ANCHORAGE  
 1998 DEPARTMENT RANKING

DEPT: 24 -POLICE  
 DEPT BUDGET UNIT/  
 RANK PROGRAM

SL SVC  
 CODE LVL

PERSONNEL			PERSONAL	SUPPLIES	OTHER	DEBT	CAPITAL	TOTAL
FT	PT	T	SERVICE					
1	0	0	57,130	0	0	0	0	57,130

110 4730-PROPERTY CRIMES CO 5 This level would allow investigation  
 0301-Detective Services OF of 10% of assignable property crime  
 SOURCE OF FUNDS, THIS SVC LEVEL: 7 cases. (SL reduced \$30).  
 TAX SUPPORT

PERSONNEL			PERSONAL	SUPPLIES	OTHER	DEBT	CAPITAL	TOTAL
T	PT	T	SERVICE					
2	0	0	151,140	0	1,000	0	0	152,140

111 4640-WARRANTS CO 6 Serve outstanding criminal and  
 0300-Patrol Division OF serious traffic warrants for arrests.  
 SOURCE OF FUNDS, THIS SVC LEVEL: 6  
 TAX SUPPORT

PERSONNEL			PERSONAL	SUPPLIES	OTHER	DEBT	CAPITAL	TOTAL
FT	PT	T	SERVICE					
1	0	0	87,160	0	0	0	0	87,160

112 4630-TRAFFIC ENFORCEMENT UNIT CO 6 Conduct Community Service Officer  
 0300-Patrol Division OF program. Assign non-emergency field  
 SOURCE OF FUNDS, THIS SVC LEVEL: 9 tasks relating to lost, stolen or found  
 TAX SUPPORT property. Assist traffic control, pre-  
 pare suspect photo lineups, shuttle  
 police vehicles for repair, and assist  
 other sections in need of temporary duty  
 personnel.

PERSONNEL			PERSONAL	SUPPLIES	OTHER	DEBT	CAPITAL	TOTAL
FT	PT	T	SERVICE					
1	0	0	66,290	0	310	0	0	66,600

BPAB010R  
09/16/97  
163557

M U N I C I P A L I T Y O F A N C H O R A G E  
1998 DEPARTMENT RANKING

DEPT: 24 -POLICE

DEPT RANK	BUDGET UNIT/ PROGRAM	SL CODE	SVC LVL	
113	4730-PROPERTY CRIMES 0301-Detective Services SOURCE OF FUNDS, THIS SVC LEVEL: TAX SUPPORT	CO	6 OF 7	Provide administrative services for the department Detective personnel.

PERSONNEL			PERSONAL SERVICE	SUPPLIES	OTHER SERVICES	DEBT SERVICE	CAPITAL OUTLAY	TOTAL
FT	PT	T						
1	0	0	46,780	0	0	0	0	46,780

---

114	4720-PERSON CRIMES 0301-Detective Services SOURCE OF FUNDS, THIS SVC LEVEL: TAX SUPPORT	CO	6 OF 7	This level provides additional staff resources to conduct criminal investigations of felony crime and allow for the investigation of an additional 9% of assignable cases.
-----	--------------------------------------------------------------------------------------------------	----	--------------	----------------------------------------------------------------------------------------------------------------------------------------------------------------------------

PERSONNEL			PERSONAL SERVICE	SUPPLIES	OTHER SERVICES	DEBT SERVICE	CAPITAL OUTLAY	TOTAL
FT	PT	T						
1	0	0	89,120	0	500	0	0	89,620

---

115	4980-FISCAL MANAGEMENT 0446-Technical Services SOURCE OF FUNDS, THIS SVC LEVEL: TAX SUPPORT	CO	6 OF 10	Police retiree medical insurance for retired and active police officers.
-----	------------------------------------------------------------------------------------------------------	----	---------------	--------------------------------------------------------------------------

PERSONNEL			PERSONAL SERVICE	SUPPLIES	OTHER SERVICES	DEBT SERVICE	CAPITAL OUTLAY	TOTAL
FT	PT	T						
0	0	0	0	0	2,087,390	0	0	2,087,390

---

116	4740-NARCOTICS ENFORCEMENT 0301-Detective Services SOURCE OF FUNDS, THIS SVC LEVEL: TAX SUPPORT	CO	6 OF 6	Funding previously provided by State Troopers and from drug asset forfeitures is required to fund undercover drug operations and provide storage for under-cover vehicles and equipment. Funding this level is expected to account for approximately 50% of all drug enforcement and vice control productivity for the department.
-----	----------------------------------------------------------------------------------------------------------	----	--------------	------------------------------------------------------------------------------------------------------------------------------------------------------------------------------------------------------------------------------------------------------------------------------------------------------------------------------------

BPAB010R  
 12/16/97  
 3557

M U N I C I P A L I T Y O F A N C H O R A G E  
 1998 DEPARTMENT RANKING

DEPT: 24 -POLICE  
 DEPT BUDGET UNIT/  
 RANK PROGRAM

SL SVC  
 CODE LVL

PERSONNEL			PERSONAL SERVICE	SUPPLIES	OTHER SERVICES	DEBT SERVICE	CAPITAL OUTLAY	TOTAL
FT	PT	T						
0	0	0	0	0	125,600	0	0	125,600

117 4920-POLICE RECORDS CO 7 Transcribe and type police reports  
 0446-Technical Services OF and reduce the current typing backlog  
 SOURCE OF FUNDS, THIS SVC LEVEL: 10 of tapes. Investigators cannot work on  
 TAX SUPPORT cases until the tapes are transcribed  
 and forwarded to the investigating  
 units. Tapes and reports must be  
 completed and available for prosecutors  
 and the courts within 1 to 10 days  
 from date of arrest. Perform background  
 checks for "Brady Bill."

PERSONNEL			PERSONAL SERVICE	SUPPLIES	OTHER SERVICES	DEBT SERVICE	CAPITAL OUTLAY	TOTAL
T	PT	T						
2	0	0	105,320	0	0	0	0	105,320

118 4950-POLICE INFO SYSTEMS CO 7 Repair and maintenance of the E-911  
 0446-Technical Services OF Emergency Communications System.  
 SOURCE OF FUNDS, THIS SVC LEVEL: 7  
 TAX SUPPORT

PERSONNEL			PERSONAL SERVICE	SUPPLIES	OTHER SERVICES	DEBT SERVICE	CAPITAL OUTLAY	TOTAL
FT	PT	T						
0	0	0	0	0	90,000	0	0	90,000

119 4630-TRAFFIC ENFORCEMENT UNIT CO 7 Traffic Officer for enforcement of the  
 0300-Patrol Division OF DWI ordinance and other law enforcement  
 SOURCE OF FUNDS, THIS SVC LEVEL: 9 activities directed at those offenses  
 TAX SUPPORT which have been identified as causing  
 accidents.

PERSONNEL			PERSONAL SERVICE	SUPPLIES	OTHER SERVICES	DEBT SERVICE	CAPITAL OUTLAY	TOTAL
FT	PT	T						
1	0	0	79,910	0	310	0	0	80,220

BPAB010R  
09/16/97  
163557

M U N I C I P A L I T Y O F A N C H O R A G E  
1998 DEPARTMENT RANKING

DEPT: 24 -POLICE

DEPT BUDGET UNIT/  
RANK PROGRAM

SL SVC  
CODE LVL

120 4620-PATROL OPERATIONS CO 6 Provide the Patrol section with  
0300-Patrol Division OF adequate supplies and equipment to  
SOURCE OF FUNDS, THIS SVC LEVEL: 9 protect persons and property in the  
TAX SUPPORT Anchorage Police Service Area. This  
represents supplies for the Police  
Reserves, Crises Resolution unit, the  
Critical Incident Response Team, and  
the Explosive Ordinance Disposal unit.

PERSONNEL			PERSONAL	SUPPLIES	OTHER	DEBT	CAPITAL	TOTAL
FT	PT	T	SERVICE		SERVICES	SERVICE	OUTLAY	
0	0	0	0	37,890	0	0	22,000	59,890

121 4920-POLICE RECORDS CO 8 One position that assists in the tran-  
0446-Technical Services OF scription of typing of police reports.  
SOURCE OF FUNDS, THIS SVC LEVEL: 10  
TAX SUPPORT

PERSONNEL			PERSONAL	SUPPLIES	OTHER	DEBT	CAPITAL	TOTAL
FT	PT	T	SERVICE		SERVICES	SERVICE	OUTLAY	
1	0	0	50,500	0	0	0	0	50,500

122 4630-TRAFFIC ENFORCEMENT UNIT CO 8 Reduce the total number of traffic  
0300-Patrol Division OF accidents, especially alcohol related,  
SOURCE OF FUNDS, THIS SVC LEVEL: 9 with injury and fatal accidents through  
TAX SUPPORT enforcement of traffic laws for DWI and  
other hazardous moving violations.

PERSONNEL			PERSONAL	SUPPLIES	OTHER	DEBT	CAPITAL	TOTAL
FT	PT	T	SERVICE		SERVICES	SERVICE	OUTLAY	
4	0	0	272,650	0	0	0	0	272,650

BPAB010R  
 /16/97  
 3557

M U N I C I P A L I T Y O F A N C H O R A G E  
 1998 DEPARTMENT RANKING

DEPT: 24 -POLICE

DEPT	BUDGET UNIT/	SL	SVC
RANK	PROGRAM	CODE	LVL

123	4920-POLICE RECORDS 0446-Technical Services	CO	9	This service level supports the personnel responsible for entering data from police reports into the PLIMS computer. Also assists in the transcriptions and typing of police reports.
	SOURCE OF FUNDS, THIS SVC LEVEL:		OF	
	TAX SUPPORT		10	

PERSONNEL			PERSONAL	SUPPLIES	OTHER	DEBT	CAPITAL	TOTAL
FT	PT	T	SERVICE		SERVICES	SERVICE	OUTLAY	
2	0	0	94,520	0	0	0	0	94,520

124	4340-PUBLIC RELATIONS 0298-Staff Services	CO	3	Educate and inform the public about preventing crimes or falling victim to crimes, how to report crimes to the police, and to inform the news media on public safety matters. Programs include: Crime Stoppers, Neighborhood Watch, Drug Abuse, Safety Programs, Public Service Announcements.
	SOURCE OF FUNDS, THIS SVC LEVEL:		OF	
	TAX SUPPORT		4	

PERSONNEL			PERSONAL	SUPPLIES	OTHER	DEBT	CAPITAL	TOTAL
FT	PT	T	SERVICE		SERVICES	SERVICE	OUTLAY	
1	0	0	70,810	410	0	0	0	71,220

125	4930-POLICE INFO/CRIME ANAL 0446-Technical Services	CO	4	Provide hardware and software support for the Anchorage Police Department.
	SOURCE OF FUNDS, THIS SVC LEVEL:		OF	
	TAX SUPPORT		5	

PERSONNEL			PERSONAL	SUPPLIES	OTHER	DEBT	CAPITAL	TOTAL
FT	PT	T	SERVICE		SERVICES	SERVICE	OUTLAY	
1	0	0	55,900	0	0	0	0	55,900

BPAB010R  
09/16/97  
163557

M U N I C I P A L I T Y O F A N C H O R A G E  
1998 DEPARTMENT RANKING

DEPT: 24 -POLICE

DEPT BUDGET UNIT/  
RANK PROGRAM

SL SVC  
CODE LVL

126 4650-Misdemeanor Follow-Up  
0300-Patrol Division  
SOURCE OF FUNDS, THIS SVC LEVEL:  
TAX SUPPORT

CO 1 The Misdemeanor Follow-up Unit  
OF investigates thefts, assaults and other  
1 misdemeanor crimes.

PERSONNEL			PERSONAL	SUPPLIES	OTHER	DEBT	CAPITAL	TOTAL
FT	PT	T	SERVICE		SERVICES	SERVICE	OUTLAY	
7	0	0	535,780	500	0	0	24,000	560,280

127 4760-Juvenile Crime Unit  
0301-Detective Services  
SOURCE OF FUNDS, THIS SVC LEVEL:  
TAX SUPPORT

CO 1 Work with kids, parents and schools in  
OF preventing kids from engaging in  
1 unlawful behavior. A team of  
investigators familiar with kids and the  
juvenile justice system will ensure  
that there is accountability for their  
actions.

PERSONNEL			PERSONAL	SUPPLIES	OTHER	DEBT	CAPITAL	TOTAL
FT	PT	T	SERVICE		SERVICES	SERVICE	OUTLAY	
7	0	0	593,440	1,000	2,500	0	0	596,940

128 4620-PATROL OPERATIONS  
0300-Patrol Division  
SOURCE OF FUNDS, THIS SVC LEVEL:  
TAX SUPPORT

CO 8 Eight officers would be utilized to  
OF augment bicycle, foot, and park patrol.  
9 In addition, they would be utilized  
wherever needed to reduce response  
times and increase service.

PERSONNEL			PERSONAL	SUPPLIES	OTHER	DEBT	CAPITAL	TOTAL
FT	PT	T	SERVICE		SERVICES	SERVICE	OUTLAY	
8	0	0	506,710	0	0	0	0	506,710

129 4940-PROPERTY & EVIDENCE  
0446-Technical Services  
SOURCE OF FUNDS, THIS SVC LEVEL:  
TAX SUPPORT

CO 6 Property and Evidence room supplies and  
OF costs of public notification of  
6 property to be disposed to allow  
compliance with new policy and  
procedure.

PERSONNEL			PERSONAL	SUPPLIES	OTHER	DEBT	CAPITAL	TOTAL
FT	PT	T	SERVICE		SERVICES	SERVICE	OUTLAY	
0	0	0	0	8,820	16,000	0	0	24,820



BPAB010R  
 /16/97  
 3557

MUNICIPALITY OF ANCHORAGE  
 1998 DEPARTMENT RANKING

DEPT: 24 -POLICE

DEPT BUDGET UNIT/ SL SVC  
 RANK PROGRAM CODE LVL

130 4971-PROP 3 CO 1 This service exists to receive  
 0300-Patrol Division OF intragovernmental charges for costs  
 SOURCE OF FUNDS, THIS SVC LEVEL: I associated with enforcement of parking  
 TAX SUPPORT violations.

PROGRAM REVENUES 600,000

PERSONNEL			PERSONAL	SUPPLIES	OTHER	DEBT	CAPITAL	TOTAL
FT	PT	T	SERVICE		SERVICES	SERVICE	OUTLAY	
0	0	0	0	0	0	0	0	0

131 4930-POLICE INFO/CRIME ANAL ND 5 Maintenance and Licensing Fees for the  
 0446-Technical Services OF Tiburon System.  
 SOURCE OF FUNDS, THIS SVC LEVEL: 5  
 TAX SUPPORT

PERSONNEL			PERSONAL	SUPPLIES	OTHER	DEBT	CAPITAL	TOTAL
FT	PT	T	SERVICE		SERVICES	SERVICE	OUTLAY	
0	0	0	0	0	173,200	0	0	173,200

SUBTOTAL OF FUNDED SERVICE LEVELS, POLICE . . . . .

PERSONNEL			PERSONAL	SUPPLIES	OTHER	DEBT	CAPITAL	TOTAL
FT	PT	T	SERVICE		SERVICES	SERVICE	OUTLAY	
505	0	0	36,843,970	698,090	6,707,430	633,720	102,470	44,985,680

----- DEPARTMENT OF POLICE FUNDING LINE -----  
 . . . . . 44,985,680

TOTALS FOR DEPARTMENT OF POLICE , FUNDED AND UNFUNDED . . . . .

PERSONNEL			PERSONAL	SUPPLIES	OTHER	DEBT	CAPITAL	TOTAL
FT	PT	T	SERVICE		SERVICES	SERVICE	OUTLAY	
505	0	0	36,843,970	698,090	6,707,430	633,720	102,470	44,985,680