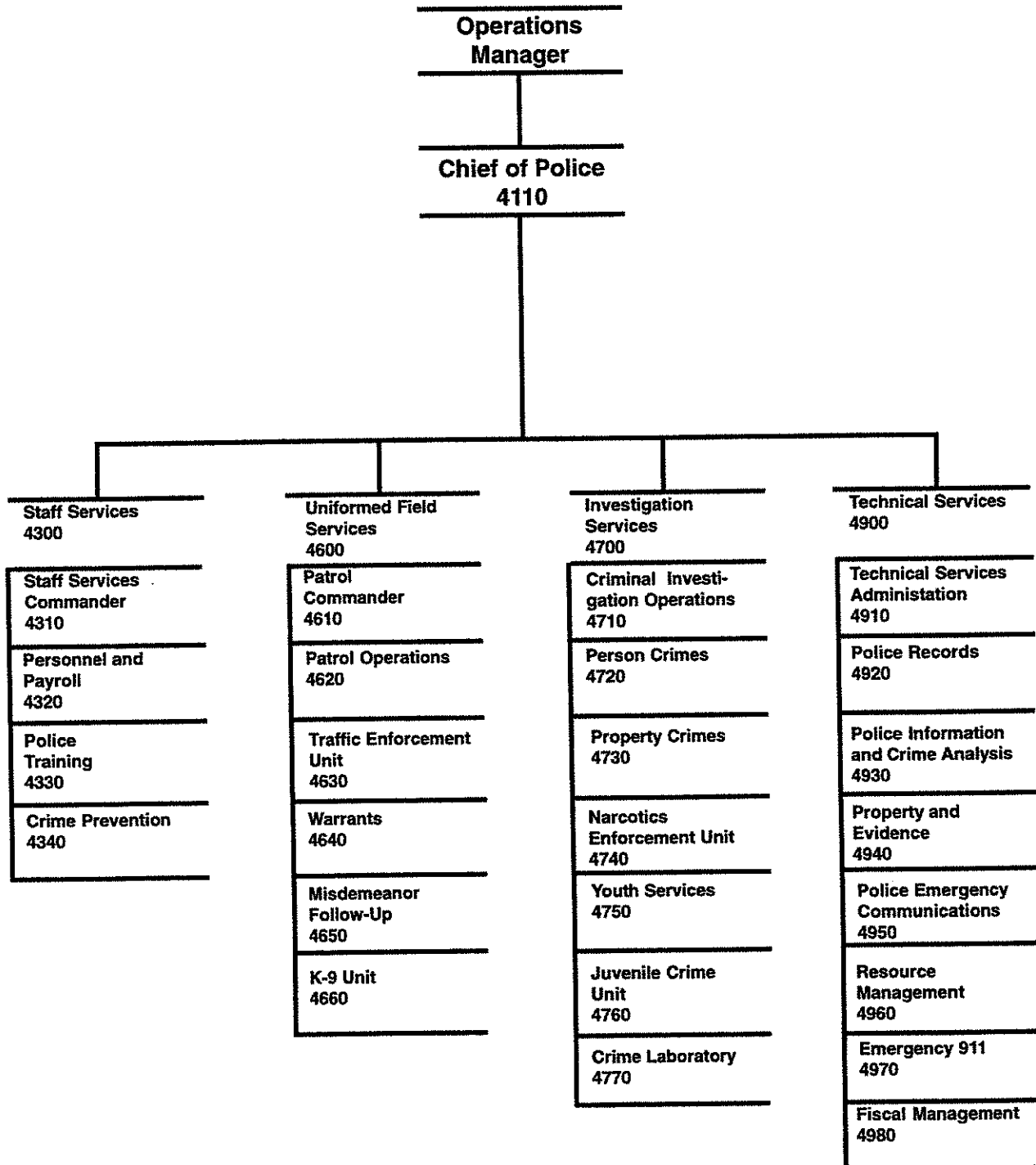


POLICE

POLICE



DEPARTMENT SUMMARY

Department

POLICE

Mission

It is the mission of the Anchorage Police Department to deliver police services in the most effective, responsive, and professional manner possible; to protect lives and property; to prevent crime and maintain order; and to enforce the law impartially.

Major Program Highlights

- Provide a safe environment for our City's residents and visitors.
- Ensure the department is properly staffed and scheduled to reduce the occurrence of violent crime in Anchorage.
- Provide foot patrol in the downtown Central Business District to serve businesses, tourists and citizens.
- Increase on-street presence of officers.
- Establish a Misdemeanor Follow-Up Unit to more thoroughly investigate thefts, assaults, and other serious misdemeanor crimes.
- Establish a Juvenile Crime Unit to work with kids, parents and schools in helping to prevent kids from engaging in unlawful behavior.
- Extend police services to the new police service area.
- Continue Community Based Policing effort in Mountain View and look at the implementation of similar programs in other neighborhoods.
- Begin implementation of the Sexual Assault Response Team program.
- Increase on-street presence of officers.
- Continue to implement a new computerized records management system to enhance officer productivity and reduce time officers spend doing written paperwork.
- Pursue Grant funding opportunities available for hiring officers, specialized enforcement efforts, and crime prevention programs.
- Implement a property Laser Bar Code Identification System.
- Maintain sub-stations to keep officers within their assigned patrol areas to the maximum extent possible.
- Provide assistance to the Mayor's Crime Task Force
- Administer the COPS Phase I Grant with Community Based Policing in the Mountain View Area.
- Hire, equip, train and graduate at least two new Police Officer Academies in 1997.

RESOURCES

| | 1996 | 1997 |
|------------------|---------------|---------------|
| Direct Costs | \$ 42,210,230 | \$ 44,727,950 |
| Program Revenues | 3,143,200 | 3,143,200 |
| Personnel | 477FT | 504FT |
| Grant Budget | \$ 1,495,053 | \$ 739,578 |
| Grant Personnel | 15FT | 15FT |

1997 RESOURCE PLAN

DEPARTMENT: POLICE

| DIVISION | FINANCIAL SUMMARY | | PERSONNEL SUMMARY | | | | | | | |
|---|-------------------|-------------|-------------------|----|---|-------|-------------|----|---|-------|
| | 1996 REVISED | 1997 BUDGET | 1996 REVISED | | | | 1997 BUDGET | | | |
| | | | FT | PT | T | TOTAL | FT | PT | T | TOTAL |
| POLICE ADMINISTRATION | 372,340 | 346,540 | 4 | | | 4 | 4 | | | 4 |
| STAFF SERVICES | 1,973,670 | 2,133,150 | 17 | | | 17 | 18 | | | 18 |
| PATROL DIVISION | 19,125,150 | 20,647,140 | 251 | | | 251 | 267 | | | 267 |
| INVESTIGATION SERVICES | 6,525,690 | 6,958,010 | 76 | | | 76 | 80 | | | 80 |
| TECHNICAL SERVICES | 12,973,810 | 13,376,610 | 129 | | | 129 | 135 | | | 135 |
| OPERATING COST | 40,970,660 | 43,461,450 | 477 | | | 477 * | 504 | | | 504 * |
| ADD DEBT SERVICE | 1,239,570 | 1,266,500 | | | | | | | | |
| DIRECT ORGANIZATION COST | 42,210,230 | 44,727,950 | | | | | | | | |
| ADD INTRAGOVERNMENTAL CHARGES FROM OTHERS | 10,822,550 | 11,810,970 | | | | | | | | |
| TOTAL DEPARTMENT COST | 53,032,780 | 56,538,920 | | | | | | | | |
| LESS INTRAGOVERNMENTAL CHARGES TO OTHERS | 2,488,700 | 2,468,520 | | | | | | | | |
| FUNCTION COST | 50,544,080 | 54,070,400 | | | | | | | | |
| LESS PROGRAM REVENUES | 3,143,200 | 3,143,200 | | | | | | | | |
| NET PROGRAM COST | 47,400,880 | 50,927,200 | | | | | | | | |

* Does not include 15 partially federally funded sworn positions.

1997 RESOURCES BY CATEGORY OF EXPENSE

| DIVISION | PERSONAL SERVICES | SUPPLIES | OTHER SERVICES | CAPITAL OUTLAY | TOTAL DIRECT COST |
|----------------------------------|-------------------|----------|----------------|----------------|-------------------|
| POLICE ADMINISTRATION | 310,570 | 27,270 | 8,700 | | 346,540 |
| STAFF SERVICES | 1,466,950 | 201,640 | 391,160 | 73,400 | 2,133,150 |
| PATROL DIVISION | 20,723,660 | 92,260 | 146,740 | 50,000 | 21,012,660 |
| INVESTIGATION SERVICES | 6,583,900 | 78,150 | 254,590 | 41,370 | 6,958,010 |
| TECHNICAL SERVICES | 7,512,020 | 388,450 | 5,304,930 | 196,590 | 13,401,990 |
| DEPT. TOTAL WITHOUT DEBT SERVICE | 36,597,100 | 787,770 | 6,106,120 | 361,360 | 43,852,350 |
| LESS VACANCY FACTOR | 390,900 | | | | 390,900 |
| ADD DEBT SERVICE | | | | | 1,266,500 |
| TOTAL DIRECT ORGANIZATION COST | 36,206,200 | 787,770 | 6,106,120 | 361,360 | 44,727,950 |

RECONCILIATION FROM 1996 REVISED BUDGET TO 1997 BUDGET

DEPARTMENT: POLICE

| | DIRECT COSTS | POSITIONS | | |
|---|---------------------|------------------|-----------|----------|
| | | FT | PT | T |
| 1996 REVISED BUDGET: | \$ 42,210,230 | 477 | | |
| 1996 ONE-TIME REQUIREMENTS: | | | | |
| - Vehicle Purchases | (228,000) | | | |
| - Arctic Winter Games | (12,000) | | | |
| - Personal Equipment/Computers for Added Officers | (121,000) | | | |
| - Recruitment and Training for Added Officers | (140,300) | | | |
| AMOUNT REQUIRED TO CONTINUE EXISTING PROGRAMS IN 1997: | | | | |
| - Salary and Benefit Adjustment | 869,810 | | | |
| - Non-Personal Services Inflation | 148,670 | | | |
| - Police Full Year Additional Cost | 274,250 | | | |
| - Full Year Cost of Property/Evidence Positions Added in CY 1996 | 178,120 | | | |
| TRANSFERS TO/FROM OTHER DEPARTMENTS: | | | | |
| - None | | | | |
| 1996 CONTINUATION LEVEL: | \$ 43,179,780 | 477 | 0 | 0 |
| FUNDED NEW/EXPANDED SERVICE LEVELS: | | | | |
| - Add Additional 21 Sworn Officers, 4 Clerks and 2 Dispatchers Required by the New Police SA | 1,644,610 | 27 | | |
| - Increased Debt Service | 26,740 | | | |
| - Increase in Property and Evidence Room Supply and Advertising | 24,820 | | | |
| - Purchase of a Digital 911 Recording Review Station | 22,000 | | | |
| UNFUNDED CURRENT SERVICE LEVELS: | | | | |
| - Delete Airtime Costs of a Secure Cellular Telephone System. System Would Have Been too Costly and Management is Looking for Less Expensive Alternative | (170,000) | | | |
| MISCELLANEOUS INCREASES (DECREASES) | | | | |
| - None | | | | |
| 1997 BUDGET REQUEST: | \$ 44,727,950 | 504 FT* | 0 PT | 0 T |

* Does not include 15 partially federally funded sworn positions.

1997 P R O G R A M P L A N

DEPARTMENT: POLICE
PROGRAM: Police Administration

DIVISION: POLICE ADMINISTRATION

PURPOSE:

It is the mission of the Anchorage Police Department to deliver police services in the most effective, responsive, and professional manner possible; to protect lives and property; to prevent crime and maintain order; and to enforce the law impartially.

1996 PERFORMANCES:

- Maintained service levels consistent with the community needs through hiring and training additional police personnel.
- Continued to address crime and related problems through increased community policing and innovative crime prevention.
- Developed and maintained prevention, intervention and enforcement strategies to achieve the goals of the Mayor's Community Action Plan on Crime project.
- Enhanced the community policing effort through the assignment of additional police officers to foot and bike patrols in the Downtown Central Business District (CBD), paths, and bike paths.
- Developed and maintained programs addressing juvenile issues including alcohol consumption and graffiti by working with other Municipal departments and the Anchorage School District as outlined in the "CAP Crime" project.

1997 PERFORMANCE OBJECTIVES:

- Maintain service levels consistent with the community needs through hiring and training additional police personnel.
- Continue to address crime and related problems through increased community policing and innovative crime prevention.
- Develop and maintain prevention, intervention and enforcement strategies to achieve the goals of the Mayor's Community Action Plan on Crime (CAP Crime) project.
- Continue to enhance the community policing effort through the assignment of additional police officers to foot and bike patrols in the Downtown Central Business district, paths, bike paths, Muldoon, Fairview, and Spenard areas.
- Develop and maintain programs addressing juvenile issues including alcohol consumption and graffiti by working with other Municipal departments and the Anchorage School District as outlined in the "CAP Crime" project.

RESOURCES:

| | 1995 REVISED | | | 1996 REVISED | | | 1997 BUDGET | | |
|--------------------|--------------|---------|---|--------------|---------|---|-------------|---------|---|
| | FT | PT | T | FT | PT | T | FT | PT | T |
| PERSONNEL: | 4 | 0 | 0 | 4 | 0 | 0 | 4 | 0 | 0 |
| PERSONAL SERVICES | \$ | 326,060 | | \$ | 328,520 | | \$ | 310,570 | |
| SUPPLIES | | 27,200 | | | 29,890 | | | 27,270 | |
| OTHER SERVICES | | 7,540 | | | 13,930 | | | 8,700 | |
| TOTAL DIRECT COST: | \$ | 360,800 | | \$ | 372,340 | | \$ | 346,540 | |

132 SERVICE LEVELS ARE FUNDED FOR THE DEPARTMENT. THIS PROGRAM HAS LEVELS:
1, 26, 60, 79,108

1997 P R O G R A M P L A N

DEPARTMENT: POLICE
PROGRAM: Staff Services

DIVISION: STAFF SERVICES

PURPOSE:

To plan and organize management of Police personnel resources. Provide, develop and coordinate training for development of police skills.
Promote public safety through public education and informational programs.

1996 PERFORMANCES:

- Researched and designed new payroll system.
- Continued to expand and develop departmental unit procedures.
- Continued to administer the Planning Committee activities and implement recommendations.
- Continued to promote public safety through public education and informational programs.
- Continued to develop and coordinate training techniques for the development of police skills.
- Continued to research, develop and implement efficiency programs.
- Continued to expand the recruitment process of seeking qualified women and minorities.
- Planned, organized and delivered training to both sworn and non sworn employees.
- Coordinated crime prevention activities, provided the public and media with information, and background checks for Safe Homes.

1997 PERFORMANCE OBJECTIVES:

- Upgrade the automated payroll system.
- Continue to expand and develop departmental unit procedures.
- Continue to administer the Planning Committee activities and implement recommendations.
- Continue to promote public safety through public education and informational programs.
- Continue to develop and coordinate training techniques for the development of police skills.
- Continue to research, develop and implement efficiency programs.
- Continue to expand the recruitment process of seeking qualified women and minorities.
- Plan, organize and deliver training to both sworn and non sworn employees.
- Coordinate crime prevention activities, provide the public and media with information, and background checks for Safe Homes.

1997 P R O G R A M P L A N

DEPARTMENT: POLICE
 PROGRAM: Staff Services
 RESOURCES:

DIVISION: STAFF SERVICES

| | 1995 REVISED | | | 1996 REVISED | | | 1997 BUDGET | | |
|---|--------------|----|---|--------------|----|---|--------------|----|---|
| | FT | PT | T | FT | PT | T | FT | PT | T |
| PERSONNEL: | 17 | 0 | 0 | 17 | 0 | 0 | 18 | 0 | 0 |
| PERSONAL SERVICES | \$ 1,376,220 | | | \$ 1,335,010 | | | \$ 1,466,950 | | |
| SUPPLIES | 161,760 | | | 162,190 | | | 201,640 | | |
| OTHER SERVICES | 336,580 | | | 476,470 | | | 391,160 | | |
| CAPITAL OUTLAY | 24,600 | | | 0 | | | 73,400 | | |
| TOTAL DIRECT COST: | \$ 1,899,160 | | | \$ 1,973,670 | | | \$ 2,133,150 | | |
| WORK MEASURES: | | | | | | | | | |
| - Applications processed (non-sworn) | 50 | | | 75 | | | 150 | | |
| - Applications processed (sworn) | 1,300 | | | 1,800 | | | 1,300 | | |
| - Personnel actions | 1,900 | | | 2,000 | | | 2,000 | | |
| - Safe Home background checks | 33 | | | 35 | | | 35 | | |
| - Investigate complaints | 50 | | | 50 | | | 50 | | |
| - Polygraphs | 100 | | | 100 | | | 100 | | |
| - Number of hours sworn and non sworn employees received training | 35,700 | | | 25,200 | | | 25,200 | | |
| - Staff inspections to assist in litigations | 50 | | | 50 | | | 50 | | |
| - Provide information and education on public safety programs | 42 | | | 50 | | | 50 | | |

132 SERVICE LEVELS ARE FUNDED FOR THE DEPARTMENT. THIS PROGRAM HAS LEVELS:
 3, 4, 5, 23, 27, 33, 34, 38, 39, 56, 61, 65, 72, 78, 88,
 93, 95, 102, 105, 125

1997 PROGRAM PLAN

DEPARTMENT: POLICE
PROGRAM: Patrol Division

DIVISION: PATROL DIVISION

PURPOSE:

To plan and deploy uniformed police officers for 24 hour patrol in 18 areas to keep the peace, protect persons and property, assist in the orderly flow of traffic, respond quickly to emergency calls, and enforce the laws within the Anchorage Police Service Area.

1996 PERFORMANCES:

- Managed and employed the Motorcycle Enforcement Program.
- Responded to citizen calls for service.
- Ensured compliance with the laws and ordinances by making felony and misdemeanor arrests in an effort to protect the public.
- Investigated fatal and serious injury traffic accidents.
- Reduced traffic accidents by issuing moving traffic citations and maintaining the arrest rate of DWI offenders.
- Directed the Impound Section, Crises Resolution unit, and Traffic unit.
- Directed the K-9 unit, Explosive Ordinance Disposal, & Warrant Sections.
- Ensured compliance to orders from the court in the form of domestic violence writs, summons, subpoenas and warrants.
- Investigated and referred for domestic prosecution, charges of Domestic Violence Writ violations.
- Managed deployment of additional protection to special details/events.
- Established a Misdemeanor Follow-up Unit to thoroughly investigate thefts and other serious misdemeanor crimes.

1997 PERFORMANCE OBJECTIVES:

- Manage and employ the Motorcycle Enforcement Program.
- Respond to citizen calls for service.
- Ensure compliance with the laws and ordinances by making felony and misdemeanor arrests in an effort to protect the public.
- Investigate fatal and serious injury traffic accidents.
- Reduce traffic accidents by issuing moving traffic citations and maintaining the arrest rate of DWI offenders.
- Direct the Impound Section, Crises Resolution unit, and Traffic unit.
- Direct the K-9 unit, Explosive Ordinance Disposal, and Warrant Sections.
- Ensure compliance to orders from the court in the form of domestic violence writs, summons, subpoenas and warrants.
- Investigate and refer for domestic prosecution charges of Domestic Violence violations.
- Manage deployment of additional protection to special details/events.

1997 P R O G R A M P L A N

DEPARTMENT: POLICE
 PROGRAM: Patrol Division
 RESOURCES:

DIVISION: PATROL DIVISION

| | 1995 REVISED | | | 1996 REVISED | | | 1997 BUDGET | | |
|---|--------------|----|---|--------------|----|---|--------------|----|---|
| | FT | PT | T | FT | PT | T | FT | PT | T |
| PERSONNEL: | 236 | 0 | 0 | 251 | 0 | 0 | 267 | 0 | 0 |
| PERSONAL SERVICES | \$17,497,110 | | | \$18,858,150 | | | \$20,358,140 | | |
| SUPPLIES | 66,400 | | | 89,290 | | | 92,260 | | |
| OTHER SERVICES | 731,300 | | | 135,400 | | | 146,740 | | |
| DEBT SERVICE | 41,400 | | | 0 | | | 0 | | |
| CAPITAL OUTLAY | 153,430 | | | 42,310 | | | 50,000 | | |
| TOTAL DIRECT COST: | \$18,489,640 | | | \$19,125,150 | | | \$20,647,140 | | |
| PROGRAM REVENUES: | \$ 2,137,200 | | | \$ 2,074,800 | | | \$ 2,074,800 | | |
| WORK MEASURES: | | | | | | | | | |
| - Average emergency patrol response time (seconds) | 200 | | | 200 | | | 200 | | |
| - Drunk driver arrests | 2,200 | | | 2,370 | | | 2,537 | | |
| - Moving traffic citations | 33,500 | | | 34,400 | | | 35,260 | | |
| - Traffic accidents investigated | 8,489 | | | 8,749 | | | 14,914 | | |
| - Fatality and serious injury traffic accident investigated | 1,000 | | | 1,000 | | | 1,259 | | |
| - Alcohol related traffic fatalities investigated | 12 | | | 12 | | | 12 | | |
| - Warrants, writs, summons and subpoenas served | 19,000 | | | 24,000 | | | 24,000 | | |
| - Calls for police officers | 233,000 | | | 240,000 | | | 247,000 | | |
| - Traffic arrests | 2,249 | | | 2,524 | | | 3,029 | | |
| - K-9 business security checks | 7,000 | | | 8,000 | | | 8,000 | | |
| - K-9 searches: buildings area searches, tracking | 1,000 | | | 1,400 | | | 1,400 | | |
| - K-9 arrests: felonies and misdemeanors | 600 | | | 650 | | | 650 | | |
| - Prisoner transports | 10,000 | | | 10,500 | | | 10,500 | | |

132 SERVICE LEVELS ARE FUNDED FOR THE DEPARTMENT. THIS PROGRAM HAS LEVELS:
 6, 7, 8, 9, 11, 28, 36, 37, 50, 53, 54, 63, 66, 67, 76,
 77, 83, 85, 89, 94, 98, 103, 104, 112, 113, 120, 121, 123, 127, 129

1997 PROGRAM PLAN

DEPARTMENT: POLICE
PROGRAM: Detective Services

DIVISION: INVESTIGATION SERVICES

PURPOSE:

To plan and organize the investigations of crimes against persons and property and the trafficking of illicit drugs in order to apprehend and successfully prosecute criminal offenders.

1996 PERFORMANCES:

- Answered over 50,000 phone calls and typed over 30,000 pages of reports.
- Continued the effective operation of the Forensic Lab in the areas of fingerprint identification, crime scene photos and court testimony.
- Prepared & presented 60% of burglary/felony fraud & theft charges to DA.
- Screened all felony property crime cases to include burglary, fraud and theft and actively investigated 15% of these cases.
- Screened all missing person reports.
- Initiated 90% of all vice-related investigations relating to prostitution, gambling and liquor violations.
- Maximized to the greatest extent possible the seizure of illegal drugs.
- Initiated virtually 100% of all illegal drug sale investigations.
- Established a Juvenile Crime Unit.
- Prepared and presented 50% of the felony violent crime charges to the DA.
- Screened all felony violent crime cases and actively investigated 50% of them, to include: homicide, sexual assault and felony assault, domestic violence and crimes against children.

1997 PERFORMANCE OBJECTIVES:

- Answer over 55,000 phone calls and type over 34,000 pages of reports.
- Continue the effective operation of the Forensic Lab in the areas of fingerprint identification, crime scene photos and court testimony.
- Prepare and present 60% of burglary/felony fraud and theft charges to DA.
- Screen all felony property crime cases to include burglary, fraud and theft and actively investigate 15% of these cases.
- Screen all missing person reports and runaway reports.
- Initiate 90% of all vice-related investigations relating to prostitution, gambling and liquor violations.
- Maximize to the greatest extent possible the seizure of illegal drugs.
- Initiate virtually 100% of all illegal drug sale investigations.
- Investigate 90% of felony juvenile crime; prepare & present 50% to MYC.
- Prepare and present 50% of the felony violent crime charges to the DA.
- Screen all felony violent crime cases and actively investigate 50% of them, to include: homicide, sexual assault and felony assault, robbery, and crimes against children.

1997 P R O G R A M P L A N

DEPARTMENT: POLICE
 PROGRAM: Detective Services
 RESOURCES:

DIVISION: INVESTIGATION SERVICES

| | 1995 REVISED | | | 1996 REVISED | | | 1997 BUDGET | | |
|---|--------------|---------|---|--------------|---------|---|--------------|---------|---|
| | FT | PT | T | FT | PT | T | FT | PT | T |
| PERSONNEL: | 69 | 0 | 0 | 76 | 0 | 0 | 80 | 0 | 0 |
| PERSONAL SERVICES | \$ 5,623,940 | | | \$ 6,130,080 | | | \$ 6,583,900 | | |
| SUPPLIES | | 70,790 | | | 94,470 | | | 78,150 | |
| OTHER SERVICES | | 115,120 | | | 280,140 | | | 254,590 | |
| DEBT SERVICE | | 12,300 | | | 24,560 | | | 24,560 | |
| CAPITAL OUTLAY | | 33,000 | | | 21,000 | | | 41,370 | |
| TOTAL DIRECT COST: | \$ 5,855,150 | | | \$ 6,550,250 | | | \$ 6,982,570 | | |
| PROGRAM REVENUES: | \$ 15,000 | | | \$ 15,000 | | | \$ 32,000 | | |
| WORK MEASURES: | | | | | | | | | |
| - Narcotics cases assigned | | 345 | | | 600 | | | 600 | |
| - Value of drugs seized (\$) | 3,000,000 | | | 4,000,000 | | | 4,000,000 | | |
| - Value of drug assets seized (\$) | 100,000 | | | 100,000 | | | 100,000 | | |
| - Total drug charges | | 350 | | | 501 | | | 501 | |
| - Person crimes cases assigned | | 1,189 | | | 1,371 | | | 2,520 | |
| - Property crimes cases assigned | | 1,839 | | | 1,920 | | | 2,000 | |
| - Crimes against children assigned | | 449 | | | 482 | | | 997 | |
| - Latent prints, crime cards and ID's made, evidence examined | | 18,443 | | | 19,175 | | | 20,250 | |
| - Crime scene photographs development and processing | | 94,931 | | | 97,320 | | | 98,175 | |
| - Total vice and other related charges | | 150 | | | 300 | | | 300 | |

132 SERVICE LEVELS ARE FUNDED FOR THE DEPARTMENT. THIS PROGRAM HAS LEVELS:
 10, 12, 13, 14, 15, 16, 29, 30, 31, 40, 41, 48, 49, 55, 59,
 62, 68, 71, 73, 74, 80, 81, 82, 91, 99, 101, 111, 114, 115, 117,
 128

1997 PROGRAM PLAN

DEPARTMENT: POLICE
PROGRAM: Technical Services

DIVISION: TECHNICAL SERVICES

PURPOSE:

Enhance the effectiveness of the Anchorage Police Department through the management of resources, information, communication and property.

1996 PERFORMANCES:

- Designed Property Laser Bar Code System.
- Provided support for the Emergency 911 system.
- Designed upgrade for the Records Management System.
- Implemented Computer Aided Dispatch (CAD).
- Resolved all emergency and non-emergency requests for police service.
- Coordinated budget development and enhanced revenue sources.
- Researched and evaluated consolidation of Police and Fire Dispatch.

1997 PERFORMANCE OBJECTIVES:

- Implement Tiburon Computer Aided Dispatch (CAD) and Records Management System(RMS) systems.
- Implement Imaging system to support Tiburon system.
- Provide support for the Emergency 911 system.
- Resolve all emergency and non-emergency requests for police service.
- Coordinate budget development and enhance revenue sources.

1997 P R O G R A M P L A N

DEPARTMENT: POLICE
 PROGRAM: Technical Services
 RESOURCES:

DIVISION: TECHNICAL SERVICES

| | 1995 REVISED | | | 1996 REVISED | | | 1997 BUDGET | | |
|---|--------------|----|--------------|--------------|----|--------------|-------------|----|--------------|
| | FT | PT | T | FT | PT | T | FT | PT | T |
| PERSONNEL: | 119 | 0 | 0 | 129 | 0 | 0 | 135 | 0 | 0 |
| PERSONAL SERVICES | | | \$ 6,604,100 | | | \$ 6,808,300 | | | \$ 7,486,640 |
| SUPPLIES | | | 344,800 | | | 381,030 | | | 388,450 |
| OTHER SERVICES | | | 4,758,960 | | | 5,579,180 | | | 5,304,930 |
| DEBT SERVICE | | | 682,420 | | | 1,215,010 | | | 1,241,940 |
| CAPITAL OUTLAY | | | 74,800 | | | 205,300 | | | 196,590 |
| TOTAL DIRECT COST: | | | \$12,465,080 | | | \$14,188,820 | | | \$14,618,550 |
| PROGRAM REVENUES: | | | \$ 991,000 | | | \$ 1,053,400 | | | \$ 1,036,400 |
| WORK MEASURES: | | | | | | | | | |
| - Calls for police officer | | | 233,000 | | | 240,000 | | | 247,000 |
| - APSIN/NCIC audits, entries, inquiries | | | 65,592 | | | 68,870 | | | 73,652 |
| - Computer systems supported | | | 135 | | | 180 | | | 250 |
| - Evidence incoming and outgoing - pieces | | | 44,800 | | | 60,000 | | | 83,000 |
| - Number of police reports input into PLIMS | | | 94,136 | | | 120,344 | | | 124,036 |
| - Public inquiries for Evidence Auction info. | | | 15,180 | | | 20,000 | | | 33,000 |
| - 911 Emergency calls | | | 130,000 | | | 136,000 | | | 143,000 |
| - Accounting documents processed | | | 6,000 | | | 6,000 | | | 6,000 |
| - Number of grant applications prepared | | | 3 | | | 3 | | | 3 |
| - Brady Bill background checks | | | 8,500 | | | 8,525 | | | 8,525 |

132 SERVICE LEVELS ARE FUNDED FOR THE DEPARTMENT. THIS PROGRAM HAS LEVELS:
 2, 17, 18, 19, 20, 21, 22, 24, 25, 32, 35, 42, 43, 44, 45,
 46, 47, 51, 52, 57, 58, 64, 69, 70, 75, 84, 86, 87, 90, 92,
 96, 97, 100, 106, 107, 109, 110, 116, 118, 119, 122, 124, 126, 130, 131,
 132

**POLICE
DEPARTMENT**

OPERATING GRANT FUNDED PROGRAMS

| <u>GRANT PROGRAM</u> | <u>FY96 GRANT YR</u> | <u>FY96 POS. FT PT T</u> | <u>FY97 GRANT YR</u> | <u>FY97 POS. FT PT T</u> | <u>GRANT PERIOD</u> |
|--|------------------------------|----------------------------------|------------------------------|----------------------------------|---------------------|
| GRANT FUNDING | \$ 1,495,053 | 15 | \$ 739,578 | 15 | |
| POLICE DEPARTMENT GENERAL GOVERNMENT OPERATING BUDGET | 42,210,230 | 477 | 44,727,950 | 504 | |
| | <u>\$ 43,705,283</u> | <u>492</u> | <u>\$ 45,467,528</u> | <u>519</u> | |
| GRANT FUNDING REPRESENTED 3.4% OF THE DEPARTMENTS 1996 DIRECT COST BUDGET. | | | | | |
| GRANT FUNDING REPRESENTS 1.6% OF THE DEPARTMENTS PROPOSED 1997 DIRECT COST BUDGET. | | | | | |
| SPECIAL INVESTIGATION FUND | \$ 96,500 (Estimate) | | \$ 96,500 (Estimate) | | Upon Completion |
| - Special fund to receive money seized or confiscated in the course of criminal investigations. These monies are received thru court disposition. | | | | | |
| LOCAL LAW ENFORCEMENT BLOCK GRANT | \$ 560,187 (Estimate) | | \$ 0 | | |
| - Provides units of local government with funds to underwrite projects to reduce crime and improve public safety. | | | | | |
| NATIONAL CRIMINAL HISTORY IMPROVEMENT PROGRAM (NCHIP) | \$ 155,000 | | \$ 20,900 (Estimate) | | 1/1/97 - 6/30/97 |
| SAFE AND SOBER STREETS | \$ 131,040 | | \$ 50,000 (Estimate) | | 10/1/96 - 9/30/97 |
| - Provides for overtime dedicated to the detection detection and apprehension of intoxicated drivers and serious traffic offenders. | | | | | |
| STREET LEVEL DRUG CRIMES | \$ 49,476 | | \$ 59,850 (Estimate) | | 7/1/96 - 6/30/97 |
| - Provides for overtime to reduce street level drug sales and violent crimes associated with street drugs. | | | | | |
| COPS - PHASE I | \$ 502,850 | 15FT | \$ 512,328 | 15FT | 3 Yrs |
| - Provides additional Police Officers to address crime and related problems through Community Oriented Policing Services. | | | | | |
| TOTAL \$ | <u>1,495,053</u> | <u>15FT</u> | <u>\$ 739,578</u> | <u>15FT</u> | |

BPAB010R
09/06/96
165627

M U N I C I P A L I T Y O F A N C H O R A G E
1997 DEPARTMENT RANKING

DEPT: 24 -POLICE

| | | | |
|------|--------------|------|-----|
| DEPT | BUDGET UNIT/ | SL | SVC |
| RANK | PROGRAM | CODE | LVL |

| | | | | |
|---|----------------------------------|----|----|--|
| 1 | 4110-POLICE ADMINISTRATION | CB | 1 | To plan, organize, control and lead th |
| | 0296-Police Administration | | OF | Anchorage Police Department in |
| | SOURCE OF FUNDS, THIS SVC LEVEL: | | 5 | delivering police services to the |
| | TAX SUPPORT | | | Anchorage Police Service Area. (Chief) |

| PERSONNEL | | | PERSONAL | SUPPLIES | OTHER | DEBT | CAPITAL | TOTAL |
|-----------|----|---|----------|----------|----------|---------|---------|---------|
| FT | PT | T | SERVICE | | SERVICES | SERVICE | OUTLAY | |
| 1 | 0 | 0 | 113,030 | 8,070 | 5,300 | 0 | 0 | 126,400 |

| | | | | |
|---|----------------------------------|----|----|--------------------------------|
| 2 | 4970-EMERGENCY 911 SERVICE | CB | 1 | Emergency 911 service revenue. |
| | 0446-Technical Services | | OF | |
| | SOURCE OF FUNDS, THIS SVC LEVEL: | | 1 | |

PROGRAM REVENUES 883,500

| PERSONNEL | | | PERSONAL | SUPPLIES | OTHER | DEBT | CAPITAL | TOTAL |
|-----------|----|---|----------|----------|----------|---------|---------|-------|
| FT | PT | T | SERVICE | | SERVICES | SERVICE | OUTLAY | |
| 0 | 0 | 0 | 0 | 0 | 0 | 0 | 0 | 0 |

| | | | | |
|---|----------------------------------|----|----|---|
| 3 | 4320-PERSONNEL/PAYROLL | CB | 1 | To plan, organize, control payroll and |
| | 0298-Staff Services | | OF | personnel functions. Provide records |
| | SOURCE OF FUNDS, THIS SVC LEVEL: | | 6 | management personnel with payroll |
| | TAX SUPPORT | | | information. Comply with and administer |
| | | | | federal, state, & Municipal labor laws. |
| | | | | Recruit personnel, process promotion, |
| | | | | demotion, termination and transfers. |
| | | | | Answer labor problems, respond |
| | | | | to grievances, EEO complaints, and |
| | | | | other personnel issues. (Admin Off) |

| PERSONNEL | | | PERSONAL | SUPPLIES | OTHER | DEBT | CAPITAL | TOTAL |
|-----------|----|---|----------|----------|----------|---------|---------|---------|
| FT | PT | T | SERVICE | | SERVICES | SERVICE | OUTLAY | |
| 1 | 0 | 0 | 78,700 | 5,100 | 90,160 | 0 | 0 | 173,960 |

| | | | | |
|---|----------------------------------|----|----|--|
| 4 | 4330-POLICE TRAINING | CB | 1 | Coordinate minimum training to qualify |
| | 0298-Staff Services | | OF | employees to meet the performance |
| | SOURCE OF FUNDS, THIS SVC LEVEL: | | 6 | standards of his/her position. |
| | TAX SUPPORT | | | (1 Sgt; 1 C1k) |

BPAB010R
09/06/96
165627

M U N I C I P A L I T Y O F A N C H O R A G E
1997 DEPARTMENT RANKING

DEPT: 24 -POLICE
DEPT BUDGET UNIT/
RANK PROGRAM

SL SVC
CODE LVL

| PERSONNEL | | | PERSONAL | SUPPLIES | OTHER | DEBT | CAPITAL | TOTAL |
|-----------|----|---|----------|----------|----------|---------|---------|---------|
| FT | PT | T | SERVICE | | SERVICES | SERVICE | OUTLAY | |
| 2 | 0 | 0 | 146,910 | 53,350 | 25,270 | 0 | 0 | 225,530 |

| | | | | |
|---|----------------------------------|----|----|---|
| 5 | 4310-COMMANDER STAFF SERVICES | CB | 1 | To plan and direct Police Personnel |
| | 0298-Staff Services | | OF | resource programs to include: adherence |
| | SOURCE OF FUNDS, THIS SVC LEVEL: | | 4 | to Alaska Police Standards Council Act |
| | TAX SUPPORT | | | in recruitment, selection, promotion, |
| | | | | transfer, career pathing, retirement, |
| | | | | police skills training; physical, |
| | | | | psychological, and polygraph testing, |
| | | | | background checks; personnel records |
| | | | | and time accounting for payroll; internal |
| | | | | affairs; & crime prevention. (1Capt) |

| PERSONNEL | | | PERSONAL | SUPPLIES | OTHER | DEBT | CAPITAL | TOTAL |
|-----------|----|---|----------|----------|----------|---------|---------|---------|
| FT | PT | T | SERVICE | | SERVICES | SERVICE | OUTLAY | |
| 1 | 0 | 0 | 96,390 | 700 | 61,220 | 0 | 0 | 158,310 |

| | | | | |
|---|----------------------------------|----|----|--|
| 6 | 4610-PATROL COMMANDER | CB | 1 | To plan and direct the deployment of |
| | 0300-Patrol Division | | OF | uniformed police officers for 24-hour |
| | SOURCE OF FUNDS, THIS SVC LEVEL: | | 4 | coverage of 18 neighborhood patrol areas |
| | TAX SUPPORT | | | providing police presence to protect |
| | | | | persons and property, keep the peace, |
| | | | | assist in the orderly flow of traffic, |
| | | | | and respond quickly to emergency calls |
| | | | | for police assistance (1 Capt) |

| PERSONNEL | | | PERSONAL | SUPPLIES | OTHER | DEBT | CAPITAL | TOTAL |
|-----------|----|---|----------|----------|----------|---------|---------|---------|
| FT | PT | T | SERVICE | | SERVICES | SERVICE | OUTLAY | |
| 1 | 0 | 0 | 98,390 | 2,000 | 4,630 | 0 | 0 | 105,020 |

| | | | | |
|---|----------------------------------|----|----|---|
| 7 | 4620-PATROL OPERATIONS | CB | 1 | To deploy Police Patrol units to patrol |
| | 0300-Patrol Division | | OF | 18 neighborhood areas 24 hours 7 days |
| | SOURCE OF FUNDS, THIS SVC LEVEL: | | 8 | per week. Respond only to emergency, |
| | TAX SUPPORT | | | life threatening situations and serious |
| | IGC SUPPORT | | | criminal activities dependent upon |
| | PROGRAM REVENUES | | | immediate Police Officer response. |
| | 30,000 | | | (2 Lt; 16 Sgt; 133 Off) |

BPAB010R
09/06/96
165627

MUNICIPALITY OF ANCHORAGE
1997 DEPARTMENT RANKING

DEPT: 24 -POLICE
DEPT BUDGET UNIT/
RANK PROGRAM

SL SVC
CODE LVL

| PERSONNEL | | | PERSONAL | SUPPLIES | OTHER | DEBT | CAPITAL | TOTAL |
|-----------|----|---|------------|----------|----------|---------|---------|------------|
| FT | PT | T | SERVICE | | SERVICES | SERVICE | OUTLAY | |
| 151 | 0 | 0 | 11,834,350 | 12,880 | 26,850 | 0 | 0 | 11,874,080 |

| | | | | | | | |
|---|----------------------------------|--|--|--|----|----|---|
| 8 | 4660-K-9 UNIT | | | | CB | 1 | To provide K-9 Teams to respond to |
| | 0300-Patrol Division | | | | | OF | requests for building searches, suspec |
| | SOURCE OF FUNDS, THIS SVC LEVEL: | | | | | 3 | tracking, lost children tracking, busi- |
| | TAX SUPPORT | | | | | | ness security checks, armed suspects, |
| | | | | | | | officer safety and assistance to other |
| | | | | | | | law enforcement agencies. (1 Sgt, 4 Of |

| PERSONNEL | | | PERSONAL | SUPPLIES | OTHER | DEBT | CAPITAL | TOTAL |
|-----------|----|---|----------|----------|----------|---------|---------|---------|
| FT | PT | T | SERVICE | | SERVICES | SERVICE | OUTLAY | |
| 5 | 0 | 0 | 445,200 | 7,160 | 10,260 | 0 | 0 | 462,620 |

| | | | | | | | |
|---|----------------------------------|--|--|--|----|----|---|
| 9 | 4630-TRAFFIC ENFORCEMENT UNIT | | | | CB | 1 | To reduce the total number of traffic |
| | 0300-Patrol Division | | | | | OF | accidents, especially alcohol related, |
| | SOURCE OF FUNDS, THIS SVC LEVEL: | | | | | 8 | injury and fatal accidents, through |
| | TAX SUPPORT | | | | | | enforcement of traffic laws for DWI and |
| | | | | | | | other hazardous moving violations. |
| | PROGRAM REVENUES 2,044,800 | | | | | | Investigate and follow-up only those |
| | | | | | | | accidents which result in fatalities, |
| | | | | | | | critical injuries or leaving the |
| | | | | | | | scene of an accident. (1 Sgt; 7 Off; |
| | | | | | | | 1 CLK) |

| PERSONNEL | | | PERSONAL | SUPPLIES | OTHER | DEBT | CAPITAL | TOTAL |
|-----------|----|---|----------|----------|----------|---------|---------|---------|
| FT | PT | T | SERVICE | | SERVICES | SERVICE | OUTLAY | |
| 9 | 0 | 0 | 673,550 | 3,280 | 19,740 | 0 | 0 | 696,570 |

| | | | | | | | |
|----|----------------------------------|--|--|--|----|----|---|
| 10 | 4720-PERSON CRIMES | | | | CB | 1 | To investigate crimes against persons |
| | 0301-Detective Services | | | | | OF | resulting in prosecution of offenders, |
| | SOURCE OF FUNDS, THIS SVC LEVEL: | | | | | 7 | to include: homicide, assault, kid- |
| | TAX SUPPORT | | | | | | napping, domestic violence, robbery, |
| | | | | | | | sexual assault, missing persons, |
| | | | | | | | run-away juveniles, obscene/threatening |
| | | | | | | | harassing phone calls, & misc offenses. |
| | | | | | | | This level will allow investigation of |
| | | | | | | | 75% of assignable homicide, assault, |
| | | | | | | | and sexual assault. (11 Det; 1 Sgt) |

BPAB010R
09/06/96
165627

MUNICIPALITY OF ANCHORAGE
1997 DEPARTMENT RANKING

DEPT: 24 -POLICE
DEPT BUDGET UNIT/
RANK PROGRAM

SL SVC
CODE LVL

| PERSONNEL | | | PERSONAL | SUPPLIES | OTHER | DEBT | CAPITAL | TOTAL |
|-----------|----|---|-----------|----------|----------|---------|---------|-----------|
| FT | PT | T | SERVICE | | SERVICES | SERVICE | OUTLAY | |
| 12 | 0 | 0 | 1,103,360 | 6,620 | 36,990 | 0 | 0 | 1,146,970 |

| | | | | | | | |
|----|----------------------------------|--|--|--|----|----|--|
| 11 | 4640-WARRANTS | | | | CB | 1 | Central office for all court documents involving MOA traffic violations and misdemeanors; receives, sorts, catalogs, enters court information into State network; locates/serves persons with arrest warrants, subpoena, summons and domestic violence writs; transports and guards prisoners to/from jail/court, and guards prisoners at Night Court. (1 Sgt 2 Off) |
| | 0300-Patrol Division | | | | | OF | |
| | SOURCE OF FUNDS, THIS SVC LEVEL: | | | | | 6 | |
| | TAX SUPPORT | | | | | | |

| PERSONNEL | | | PERSONAL | SUPPLIES | OTHER | DEBT | CAPITAL | TOTAL |
|-----------|----|---|----------|----------|----------|---------|---------|---------|
| FT | PT | T | SERVICE | | SERVICES | SERVICE | OUTLAY | |
| 3 | 0 | 0 | 257,070 | 4,800 | 4,540 | 0 | 4,000 | 270,410 |

| | | | | | | | |
|----|----------------------------------|--|--|-------|----|----|---|
| 12 | 4710-CRIMINAL INVESTIGATION OP | | | | CB | 1 | To plan and organize the Detective Divison resources to solve crimes against persons and property, and apprehend and prosecute criminal offenders. (1 Capt) |
| | 0301-Detective Services | | | | | OF | |
| | SOURCE OF FUNDS, THIS SVC LEVEL: | | | | | 3 | |
| | TAX SUPPORT | | | | | | |
| | PROGRAM REVENUES | | | 5,000 | | | |

| PERSONNEL | | | PERSONAL | SUPPLIES | OTHER | DEBT | CAPITAL | TOTAL |
|-----------|----|---|----------|----------|----------|---------|---------|---------|
| FT | PT | T | SERVICE | | SERVICES | SERVICE | OUTLAY | |
| 1 | 0 | 0 | 109,000 | 2,500 | 9,320 | 24,560 | 27,370 | 172,750 |

| | | | | | | | |
|----|----------------------------------|--|--|-------|----|----|--|
| 13 | 4770-CRIME LABORATORY | | | | CB | 1 | To aid in solving crimes by: 1) fingerprint identification of suspects and other individuals involved in police investigations, 2) offering expert court testimony on lab findings, 3) photo-document crime scenes and evidence 4) preparing crime scene photos for presentation to court, and 5) working homicide and major felony crime scenes. Train ID & photo techniques (1 For. Sup) |
| | 0301-Detective Services | | | | | OF | |
| | SOURCE OF FUNDS, THIS SVC LEVEL: | | | | | 4 | |
| | TAX SUPPORT | | | | | | |
| | PROGRAM REVENUES | | | 5,000 | | | |

BPAB010R
09/06/96
165627

M U N I C I P A L I T Y O F A N C H O R A G E
1997 DEPARTMENT RANKING

DEPT: 24 -POLICE
DEPT BUDGET UNIT/
RANK PROGRAM

SL SVC
CODE LVL

| PERSONNEL | | | PERSONAL | SUPPLIES | OTHER | DEBT | CAPITAL | TOTAL |
|-----------|----|---|----------|----------|----------|---------|---------|---------|
| FT | PT | T | SERVICE | | SERVICES | SERVICE | OUTLAY | |
| 1 | 0 | 0 | 84,430 | 35,050 | 3,440 | 0 | 0 | 122,920 |

14 4750-CRIMES AGAINST CHILDREN CB 1 To investigate felony cases in which
0301-Detective Services OF children are the victims of abuse,
SOURCE OF FUNDS, THIS SVC LEVEL: 3 neglect, sexual assault & exploitation
TAX SUPPORT This level will allow the investigation
of 72% of the assignable crimes against
children cases. (6 Det; 1 Sgt)

| PERSONNEL | | | PERSONAL | SUPPLIES | OTHER | DEBT | CAPITAL | TOTAL |
|-----------|----|---|----------|----------|----------|---------|---------|---------|
| FT | PT | T | SERVICE | | SERVICES | SERVICE | OUTLAY | |
| 7 | 0 | 0 | 624,810 | 500 | 3,890 | 0 | 0 | 629,200 |

15 4730-PROPERTY CRIMES CB 1 To reduce property loss through
0301-Detective Services OF identification, apprehension/filing
SOURCE OF FUNDS, THIS SVC LEVEL: 7 of criminal charges against offenders
TAX SUPPORT who commit felony theft, auto theft,
theft from vehicles & burglary. Would
allow investigation of 80% of burglary,
theft, robbery and fraud cases with
a loss exceeding \$5000. Provide clerical
support and supervision for the Theft &
Burglary units. (2 Sgt; 10 Det; 6 Clks)

| PERSONNEL | | | PERSONAL | SUPPLIES | OTHER | DEBT | CAPITAL | TOTAL |
|-----------|----|---|-----------|----------|----------|---------|---------|-----------|
| FT | PT | T | SERVICE | | SERVICES | SERVICE | OUTLAY | |
| 18 | 0 | 0 | 1,345,310 | 1,080 | 7,530 | 0 | 0 | 1,353,920 |

16 4740-NARCOTICS ENFORCEMENT CB 1 To investigate street level drug and
0301-Detective Services OF vice crime and provide 40% of the
SOURCE OF FUNDS, THIS SVC LEVEL: 6 current enforcement response to
TAX SUPPORT narcotics and vice related activities.
Focus enforcement efforts primarily on
crime in the neighborhoods. This level
will provide supervision & clerical
support. (6 Det; 1 Sgt; 1 Clk)

PROGRAM REVENUES 22,000

BPAB010R
09/06/96
165627

MUNICIPALITY OF ANCHORAGE
1997 DEPARTMENT RANKING

DEPT: 24 -POLICE
DEPT BUDGET UNIT/
RANK PROGRAM

SL SVC
CODE LVL

| PERSONNEL | | | PERSONAL SERVICE | SUPPLIES | OTHER SERVICES | DEBT SERVICE | CAPITAL OUTLAY | TOTAL |
|-----------|----|---|------------------|----------|----------------|--------------|----------------|---------|
| FT | PT | T | | | | | | |
| 8 | 0 | 0 | 759,710 | 6,000 | 30,340 | 0 | 0 | 796,050 |

| | | | | | | | |
|----|----------------------------------|--|--------|--|----|----|--|
| 17 | 4940-PROPERTY & EVIDENCE | | | | CB | 1 | To receive, document and check out evidence for investigation officers and the court. Determine ownership and return found property. Return safekeeping property to rightful owners. Prepare criminal evidence for the courts and prosecution. (4 Techs) |
| | 0446-Technical Services | | | | | OF | |
| | SOURCE OF FUNDS, THIS SVC LEVEL: | | | | | 6 | |
| | TAX SUPPORT | | | | | | |
| | PROGRAM REVENUES | | 22,000 | | | | |

| PERSONNEL | | | PERSONAL SERVICE | SUPPLIES | OTHER SERVICES | DEBT SERVICE | CAPITAL OUTLAY | TOTAL |
|-----------|----|---|------------------|----------|----------------|--------------|----------------|---------|
| FT | PT | T | | | | | | |
| 4 | 0 | 0 | 206,370 | 9,140 | 9,720 | 0 | 0 | 225,230 |

| | | | | | | | |
|----|----------------------------------|--|--|--|----|----|--|
| 18 | 4950-POLICE INFO SYSTEMS | | | | CB | 1 | To expeditiously dispatch a police officer to emergency calls-for-service. |
| | 0446-Technical Services | | | | | OF | |
| | SOURCE OF FUNDS, THIS SVC LEVEL: | | | | | 9 | Maintain constant communications with police officers. Transfer emergency calls to AST/AFD. Based on this level of staffing, overtime premium pay would be high to provide this service. Maintain the E911 system. (3 Com Clk III; 29 Com Clks II) |
| | TAX SUPPORT | | | | | | |
| | IGC SUPPORT | | | | | | |

| PERSONNEL | | | PERSONAL SERVICE | SUPPLIES | OTHER SERVICES | DEBT SERVICE | CAPITAL OUTLAY | TOTAL |
|-----------|----|---|------------------|----------|----------------|--------------|----------------|-----------|
| FT | PT | T | | | | | | |
| 32 | 0 | 0 | 2,092,760 | 11,080 | 312,980 | 152,020 | 0 | 2,568,840 |

| | | | | | | | |
|----|----------------------------------|--|--------|--|----|----|--|
| 19 | 4920-POLICE RECORDS | | | | CB | 1 | Receive, file, computerize & distribute all historical police reports and associated documents for police officers court personnel, prosecutors and other law enforcement officials. Prepare court documents daily including police reports, criminal intake forms and citations. Respond to requests for service from public and other agencies. (21 Clks; 1 Sup) |
| | 0446-Technical Services | | | | | OF | |
| | SOURCE OF FUNDS, THIS SVC LEVEL: | | | | | 10 | |
| | TAX SUPPORT | | | | | | |
| | PROGRAM REVENUES | | 46,500 | | | | |

BPAB010R
09/06/96
165627

M U N I C I P A L I T Y O F A N C H O R A G E
1997 DEPARTMENT RANKING

DEPT: 24 -POLICE
DEPT BUDGET UNIT/
RANK PROGRAM

SL SVC
CODE LVL

| PERSONNEL | | | PERSONAL | SUPPLIES | OTHER | DEBT | CAPITAL | TOTAL |
|-----------|----|---|-----------|----------|----------|---------|---------|-----------|
| FT | PT | T | SERVICE | | SERVICES | SERVICE | OUTLAY | |
| 22 | 0 | 0 | 1,153,500 | 11,940 | 4,600 | 0 | 5,000 | 1,175,040 |

| | | | | | | | |
|----|----------------------------------|--|--|--|----|----|---|
| 20 | 4980-FISCAL MANAGEMENT | | | | CB | 1 | To provide financial accounting and budgeting, process all payments, prepare periodic financial reports for police commanders, conduct financial analyses, project revenues, prepare contract documents and the department's contact with OMB, Finance, and Purchasing. Prepares the annual budget. (1 Sr Acct Clk) |
| | 0446-Technical Services | | | | | OF | |
| | SOURCE OF FUNDS, THIS SVC LEVEL: | | | | | 8 | |
| | TAX SUPPORT | | | | | | |

| PERSONNEL | | | PERSONAL | SUPPLIES | OTHER | DEBT | CAPITAL | TOTAL |
|-----------|----|---|----------|----------|----------|---------|---------|--------|
| FT | PT | T | SERVICE | | SERVICES | SERVICE | OUTLAY | |
| 1 | 0 | 0 | 71,970 | 1,800 | 710 | 0 | 0 | 74,480 |

| | | | | | | | |
|----|----------------------------------|--|--|--|----|----|--|
| 21 | 4930-POLICE INFO/CRIME ANAL | | | | CB | 1 | To enhance the efficiency and effectiveness of the Department by procuring, developing, operating and maintaining automated information systems. (3 Data Spec; 2 Sup; 1 Mgr) |
| | 0446-Technical Services | | | | | OF | |
| | SOURCE OF FUNDS, THIS SVC LEVEL: | | | | | 5 | |
| | TAX SUPPORT | | | | | | |

| PERSONNEL | | | PERSONAL | SUPPLIES | OTHER | DEBT | CAPITAL | TOTAL |
|-----------|----|---|----------|----------|----------|---------|---------|---------|
| FT | PT | T | SERVICE | | SERVICES | SERVICE | OUTLAY | |
| 6 | 0 | 0 | 448,650 | 11,640 | 206,350 | 0 | 126,590 | 793,230 |

| | | | | | | | |
|----|----------------------------------|--|--|--|----|----|--|
| 22 | 4910-TECH SERVICES ADMIN | | | | CB | 1 | To direct the sections responsible for the operational support functions of the department: Resource and Fiscal Management, Facilities Operations, Police Records and Data Entry, Police Information Systems, Property and Evidence, and Police Communications. (1 Capt) |
| | 0446-Technical Services | | | | | OF | |
| | SOURCE OF FUNDS, THIS SVC LEVEL: | | | | | 2 | |
| | TAX SUPPORT | | | | | | |

BPAB010R
09/06/96
165627

M U N I C I P A L I T Y O F A N C H O R A G E
1997 DEPARTMENT RANKING

DEPT: 24 -POLICE
DEPT BUDGET UNIT/
RANK PROGRAM

SL SVC
CODE LVL

| PERSONNEL | | | PERSONAL | SUPPLIES | OTHER | DEBT | CAPITAL | TOTAL |
|-----------|----|---|----------|----------|----------|---------|---------|---------|
| FT | PT | T | SERVICE | | SERVICES | SERVICE | OUTLAY | |
| 1 | 0 | 0 | 96,390 | 2,100 | 1,790 | 0 | 0 | 100,280 |

| | | | | |
|----|----------------------------------|----|----|---------------------------------------|
| 23 | 4340-PUBLIC RELATIONS | CB | 1 | To plan and organize the Anchorage |
| | 0298-Staff Services | | OF | Police Department's general Crime |
| | SOURCE OF FUNDS, THIS SVC LEVEL: | | 4 | Prevention activities. Establish the |
| | TAX SUPPORT | | | curriculum and schedules. Coordinate |
| | | | | all activities with other agencies, |
| | | | | school committees, teachers, parents, |
| | | | | and other Crime Prevention groups. |
| | | | | (1 Sgt 1 Clerk) |

| PERSONNEL | | | PERSONAL | SUPPLIES | OTHER | DEBT | CAPITAL | TOTAL |
|-----------|----|---|----------|----------|----------|---------|---------|---------|
| FT | PT | T | SERVICE | | SERVICES | SERVICE | OUTLAY | |
| 2 | 0 | 0 | 149,560 | 7,840 | 5,000 | 0 | 0 | 162,400 |

| | | | | |
|----|----------------------------------|----|----|--|
| 24 | 4960-RESOURCE MANAGEMENT | CB | 1 | Central supply for issuance of uniforms, |
| | 0446-Technical Services | | OF | leather gear, brass, body armor, parkas |
| | SOURCE OF FUNDS, THIS SVC LEVEL: | | 5 | and equipment; ordering and stocking all |
| | TAX SUPPORT | | | department office supplies and police |
| | | | | forms; shipping and receiving mail and |
| | | | | freight. Medical & bio-hazard supplies, |
| | | | | custodial and building maintenance |
| | | | | supplies for police buildings. (1 Sr |
| | | | | Clk) |

| PERSONNEL | | | PERSONAL | SUPPLIES | OTHER | DEBT | CAPITAL | TOTAL |
|-----------|----|---|----------|----------|----------|---------|---------|---------|
| FT | PT | T | SERVICE | | SERVICES | SERVICE | OUTLAY | |
| 1 | 0 | 0 | 52,900 | 224,600 | 145,310 | 0 | 2,000 | 424,810 |

| | | | | |
|----|----------------------------------|----|----|--|
| 25 | 4960-RESOURCE MANAGEMENT | CB | 2 | Cost of housing Municipal prisoners by |
| | 0446-Technical Services | | OF | the Department of Corrections. |
| | SOURCE OF FUNDS, THIS SVC LEVEL: | | 5 | |
| | TAX SUPPORT | | | |

PROGRAM REVENUES 62,400

| PERSONNEL | | | PERSONAL | SUPPLIES | OTHER | DEBT | CAPITAL | TOTAL |
|-----------|----|---|----------|----------|-----------|---------|---------|-----------|
| FT | PT | T | SERVICE | | SERVICES | SERVICE | OUTLAY | |
| 0 | 0 | 0 | 0 | 0 | 1,500,000 | 0 | 0 | 1,500,000 |

BPAB010R
 09/06/96
 165627

M U N I C I P A L I T Y O F A N C H O R A G E
 1997 DEPARTMENT RANKING

DEPT: 24 -POLICE
 DEPT BUDGET UNIT/
 RANK PROGRAM

SL SVC
 CODE LVL

26 4110-POLICE ADMINISTRATION CB 2 To plan and organize the deployment of
 0296-Police Administration OF police personnel and equipment, direct
 SOURCE OF FUNDS, THIS SVC LEVEL: 5 daily operations, establish policies,
 TAX SUPPORT procedures and standards of performance
 and in the absence of the Chief assume
 the duties of the Chief. The Deputy
 Chief of Police is also the staff
 support for the Public Safety Advisory
 Commission. (Deputy Chief)

| PERSONNEL | | | PERSONAL | SUPPLIES | OTHER | DEBT | CAPITAL | TOTAL |
|-----------|----|---|----------|----------|----------|---------|---------|---------|
| FT | PT | T | SERVICE | | SERVICES | SERVICE | OUTLAY | |
| 1 | 0 | 0 | 104,510 | 1,200 | 3,000 | 0 | 0 | 108,710 |

27 4310-COMMANDER STAFF SERVICES CB 2 To investigate only major allegations of
 0298-Staff Services OF misconduct by police employees, citizen
 SOURCE OF FUNDS, THIS SVC LEVEL: 4 complaints against police employees,
 TAX SUPPORT review supervisor disciplinary action
 reports; assist in preparing defense in
 litigation against the department;
 conduct inspections of police programs
 to insure operational compliance
 with police policies.
 (1 Sgt)

| PERSONNEL | | | PERSONAL | SUPPLIES | OTHER | DEBT | CAPITAL | TOTAL |
|-----------|----|---|----------|----------|----------|---------|---------|---------|
| FT | PT | T | SERVICE | | SERVICES | SERVICE | OUTLAY | |
| 1 | 0 | 0 | 89,310 | 200 | 11,530 | 0 | 0 | 101,040 |

28 4610-PATROL COMMANDER CB 2 To supply the Patrol administrative
 0300-Patrol Division OF office with adequate operational
 SOURCE OF FUNDS, THIS SVC LEVEL: 4 supplies and equipment.
 TAX SUPPORT

| PERSONNEL | | | PERSONAL | SUPPLIES | OTHER | DEBT | CAPITAL | TOTAL |
|-----------|----|---|----------|----------|----------|---------|---------|--------|
| FT | PT | T | SERVICE | | SERVICES | SERVICE | OUTLAY | |
| 0 | 0 | 0 | 0 | 22,750 | 0 | 0 | 0 | 22,750 |

BPAB010R
09/06/96
165627

MUNICIPALITY OF ANCHORAGE
1997 DEPARTMENT RANKING

DEPT: 24 -POLICE
DEPT BUDGET UNIT/
RANK PROGRAM

SL SVC
CODE LVL

29 4720-PERSON CRIMES CB 2 This level will allow investigation of
0301-Detective Services OF 8% of assignable homicide, assault
SOURCE OF FUNDS, THIS SVC LEVEL: 7 cases and sexual assault cases.
TAX SUPPORT It will provide supervision for
the Person Crimes section and would
allow investigation of some missing
person cases. (1 Det)

| PERSONNEL | | | PERSONAL | SUPPLIES | OTHER | DEBT | CAPITAL | TOTAL |
|-----------|----|---|----------|----------|----------|---------|---------|--------|
| FT | PT | T | SERVICE | | SERVICES | SERVICE | OUTLAY | |
| 1 | 0 | 0 | 91,700 | 300 | 3,000 | 0 | 0 | 95,000 |

30 4770-CRIME LABORATORY CB 2 Photo-document crime scenes and evidence
0301-Detective Services OF for presentation to court for homicide
SOURCE OF FUNDS, THIS SVC LEVEL: 4 and major felony cases. Examine items
TAX SUPPORT for latent prints. Compare and identify
inked and latent prints. Testify in
court regarding examinations. (1 ID Tec)

| PERSONNEL | | | PERSONAL | SUPPLIES | OTHER | DEBT | CAPITAL | TOTAL |
|-----------|----|---|----------|----------|----------|---------|---------|--------|
| FT | PT | T | SERVICE | | SERVICES | SERVICE | OUTLAY | |
| 1 | 0 | 0 | 64,800 | 14,500 | 2,980 | 0 | 0 | 82,280 |

31 4730-PROPERTY CRIMES CB 2 Provide supervision for Property Crimes
0301-Detective Services OF Section. Handle citizens calls
SOURCE OF FUNDS, THIS SVC LEVEL: 7 regarding cases. Provide clerical
TAX SUPPORT supervision for typists, operators
and pawn clerk. (1 Lt; 1 Clk III)

| PERSONNEL | | | PERSONAL | SUPPLIES | OTHER | DEBT | CAPITAL | TOTAL |
|-----------|----|---|----------|----------|----------|---------|---------|---------|
| FT | PT | T | SERVICE | | SERVICES | SERVICE | OUTLAY | |
| 2 | 0 | 0 | 161,020 | 200 | 1,500 | 0 | 0 | 162,720 |

32 4980-FISCAL MANAGEMENT CB 2 To process all procurement documents,
0446-Technical Services OF reconcile all billings and invoices to
SOURCE OF FUNDS, THIS SVC LEVEL: 8 orders, process payment documents,
TAX SUPPORT reconcile in-house records to
Municipal financial statements. Run
weekly financial status reports for
Police commanders. (1 Spec clk)

BPAB010R
09/06/96
165627

M U N I C I P A L I T Y O F A N C H O R A G E
1997 DEPARTMENT RANKING

DEPT: 24 -POLICE
DEPT BUDGET UNIT/
RANK PROGRAM

SL SVC
CODE LVL

| PERSONNEL | | | PERSONAL | SUPPLIES | OTHER | DEBT | CAPITAL | TOTAL |
|-----------|----|---|----------|----------|----------|---------|---------|--------|
| FT | PT | T | SERVICE | | SERVICES | SERVICE | OUTLAY | |
| 1 | 0 | 0 | 51,460 | 3,060 | 120 | 0 | 0 | 54,640 |

33 4320-PERSONNEL/PAYROLL CB 2 Personnel clerk maintains confidential
0298-Staff Services OF & sensitive files on all APD employees
SOURCE OF FUNDS, THIS SVC LEVEL: 6 Tracks personnel actions such as
TAX SUPPORT evaluations, tuition assistance and
disciplinary actions. Performs needed
research on personnel issues. Meets
with judges on subpoenaed files. (1clerk)

| PERSONNEL | | | PERSONAL | SUPPLIES | OTHER | DEBT | CAPITAL | TOTAL |
|-----------|----|---|----------|----------|----------|---------|---------|--------|
| FT | PT | T | SERVICE | | SERVICES | SERVICE | OUTLAY | |
| 1 | 0 | 0 | 53,960 | 500 | 400 | 0 | 0 | 54,860 |

34 4330-POLICE TRAINING CB 2 Coordinate minimum firearms training to
0298-Staff Services OF qualify sworn employees with firearms.
SOURCE OF FUNDS, THIS SVC LEVEL: 6 Establish firearms equipment standards
TAX SUPPORT and provide safety inspections of
firearms. (1 Sr Pat Off)

| PERSONNEL | | | PERSONAL | SUPPLIES | OTHER | DEBT | CAPITAL | TOTAL |
|-----------|----|---|----------|----------|----------|---------|---------|---------|
| FT | PT | T | SERVICE | | SERVICES | SERVICE | OUTLAY | |
| 1 | 0 | 0 | 83,660 | 55,000 | 360 | 0 | 0 | 139,020 |

35 4920-POLICE RECORDS CB 2 To collect traffic fines at the front
0446-Technical Services OF counter and through the mail, request
SOURCE OF FUNDS, THIS SVC LEVEL: 10 warrants for unpaid citations. Enter
TAX SUPPORT citation information into APSIN
System and input and update these
files. Conduct audits, entries and
inquiries in APSIN/NCIC. (4 Clks)

| PERSONNEL | | | PERSONAL | SUPPLIES | OTHER | DEBT | CAPITAL | TOTAL |
|-----------|----|---|----------|----------|----------|---------|---------|---------|
| FT | PT | T | SERVICE | | SERVICES | SERVICE | OUTLAY | |
| 4 | 0 | 0 | 201,270 | 1,200 | 0 | 0 | 0 | 202,470 |

BPAB010R
09/06/96
165627

MUNICIPALITY OF ANCHORAGE
1997 DEPARTMENT RANKING

DEPT: 24 -POLICE
DEPT BUDGET UNIT/
RANK PROGRAM

SL SVC
CODE LVL

36 4640-WARRANTS CB 2 To provide Night Court support to
0300-Patrol Division OF include: 1) police officer to guard
SOURCE OF FUNDS, THIS SVC LEVEL: 6 Night Court, and serve some Domestic
TAX SUPPORT Violence Writs (DVW) during swing
shift hours, and 2) an officer to input
the backlog of traffic warrants and
DVW into ASPIN. (2 Off)

| PERSONNEL | | | PERSONAL | SUPPLIES | OTHER | DEBT | CAPITAL | TOTAL |
|-----------|----|---|----------|----------|----------|---------|---------|---------|
| FT | PT | T | SERVICE | | SERVICES | SERVICE | OUTLAY | |
| 2 | 0 | 0 | 191,980 | 1,000 | 1,500 | 0 | 0 | 194,480 |

37 4620-PATROL OPERATIONS NM 7 During April 1996 election the voters
0300-Patrol Division OF of Anchorage voted to abolish the
SOURCE OF FUNDS, THIS SVC LEVEL: 8 current Police Service Area and create
TAX SUPPORT a new Police Service Area that included
the area north of McHugh Creek which
previously was outside the service area.

| PERSONNEL | | | PERSONAL | SUPPLIES | OTHER | DEBT | CAPITAL | TOTAL |
|-----------|----|---|----------|----------|----------|---------|---------|---------|
| FT | PT | T | SERVICE | | SERVICES | SERVICE | OUTLAY | |
| 17 | 0 | 0 | 939,930 | 0 | 0 | 0 | 0 | 939,930 |

38 4330-POLICE TRAINING NM 6 Training costs of an additional police
0298-Staff Services OF academy to handle the 21 additional
SOURCE OF FUNDS, THIS SVC LEVEL: 6 sworn officers due to the new police
TAX SUPPORT service area.

| PERSONNEL | | | PERSONAL | SUPPLIES | OTHER | DEBT | CAPITAL | TOTAL |
|-----------|----|---|----------|----------|----------|---------|---------|---------|
| FT | PT | T | SERVICE | | SERVICES | SERVICE | OUTLAY | |
| 0 | 0 | 0 | 0 | 39,450 | 0 | 0 | 73,400 | 112,850 |

39 4320-PERSONNEL/PAYROLL NM 6 Recruitment costs associated with the
0298-Staff Services OF training of officers for the new voter
SOURCE OF FUNDS, THIS SVC LEVEL: 6 approved Police Service Area.
TAX SUPPORT

BPAB010R
09/06/96
165627

M U N I C I P A L I T Y O F A N C H O R A G E
1997 DEPARTMENT RANKING

DEPT: 24 -POLICE
DEPT BUDGET UNIT/
RANK PROGRAM

SL SVC
CODE LVL

| PERSONNEL | | | PERSONAL | SUPPLIES | OTHER | DEBT | CAPITAL | TOTAL |
|-----------|----|---|----------|----------|----------|---------|---------|--------|
| FT | PT | T | SERVICE | | SERVICES | SERVICE | OUTLAY | |
| 0 | 0 | 0 | 0 | 0 | 61,450 | 0 | 0 | 61,450 |

40 4720-PERSON CRIMES NM 7 During April 1996 election the voters
0301-Detective Services OF of Anchorage voted to abolish the
SOURCE OF FUNDS, THIS SVC LEVEL: 7 current Police Service Area and create
TAX SUPPORT a new Police Service Area that includes
the area north of McHugh Creek that was
previously outside the service area.

| PERSONNEL | | | PERSONAL | SUPPLIES | OTHER | DEBT | CAPITAL | TOTAL |
|-----------|----|---|----------|----------|----------|---------|---------|---------|
| FT | PT | T | SERVICE | | SERVICES | SERVICE | OUTLAY | |
| 2 | 0 | 0 | 166,480 | 0 | 0 | 0 | 7,000 | 173,480 |

41 4730-PROPERTY CRIMES NM 7 During April 1996 election the voters
0301-Detective Services OF of Anchorage voted to abolish the
SOURCE OF FUNDS, THIS SVC LEVEL: 7 current Police Service Area and create
TAX SUPPORT a new Police Service Area that includes
the area north of McHugh Creek that was
previously outside the service area.

| PERSONNEL | | | PERSONAL | SUPPLIES | OTHER | DEBT | CAPITAL | TOTAL |
|-----------|----|---|----------|----------|----------|---------|---------|---------|
| FT | PT | T | SERVICE | | SERVICES | SERVICE | OUTLAY | |
| 2 | 0 | 0 | 166,480 | 0 | 0 | 0 | 7,000 | 173,480 |

42 4920-POLICE RECORDS NM 10 Increase of sworn officers
0446-Technical Services OF necessitate additional clerks
SOURCE OF FUNDS, THIS SVC LEVEL: 10 for typing and other clerical support.
TAX SUPPORT Positions effective July 18, 1997.
(3 Clks)

| PERSONNEL | | | PERSONAL | SUPPLIES | OTHER | DEBT | CAPITAL | TOTAL |
|-----------|----|---|----------|----------|----------|---------|---------|--------|
| FT | PT | T | SERVICE | | SERVICES | SERVICE | OUTLAY | |
| 3 | 0 | 0 | 50,670 | 0 | 0 | 0 | 10,500 | 61,170 |

BPAB010R
09/06/96
165627

MUNICIPALITY OF ANCHORAGE
1997 DEPARTMENT RANKING

DEPT: 24 -POLICE

DEPT BUDGET UNIT/
RANK PROGRAM

SL SVC
CODE LVL

43 4930-POLICE INFO/CRIME ANAL NM 5 Increase of sworn officers
0446-Technical Services OF necessitate additional clerks
SOURCE OF FUNDS, THIS SVC LEVEL: 5 for typing and other clerical support.
TAX SUPPORT Positions effective July 18, 1997.
(1 Clk)

| PERSONNEL | | | PERSONAL | SUPPLIES | OTHER | DEBT | CAPITAL | TOTAL |
|-----------|----|---|----------|----------|----------|---------|---------|--------|
| FT | PT | T | SERVICE | | SERVICES | SERVICE | OUTLAY | |
| 1 | 0 | 0 | 16,890 | 0 | 0 | 0 | 3,500 | 20,390 |

44 4950-POLICE INFO SYSTEMS NM 8 Increase of sworn officers
0446-Technical Services OF necessitate additional dispatchers.
SOURCE OF FUNDS, THIS SVC LEVEL: 9 Positions effective July 18, 1997.
TAX SUPPORT (2 Comm Clks)

| PERSONNEL | | | PERSONAL | SUPPLIES | OTHER | DEBT | CAPITAL | TOTAL |
|-----------|----|---|----------|----------|----------|---------|---------|--------|
| FT | PT | T | SERVICE | | SERVICES | SERVICE | OUTLAY | |
| 2 | 0 | 0 | 42,360 | 0 | 0 | 0 | 7,000 | 49,360 |

45 4960-RESOURCE MANAGEMENT NM 5 Uniform and uniform equipment issue for
0446-Technical Services OF the 21 new sworn officers to be hired
SOURCE OF FUNDS, THIS SVC LEVEL: 5 as a result of the new police service
TAX SUPPORT area. This level also includes the cost
of a new sub-station.

| PERSONNEL | | | PERSONAL | SUPPLIES | OTHER | DEBT | CAPITAL | TOTAL |
|-----------|----|---|----------|----------|----------|---------|---------|--------|
| FT | PT | T | SERVICE | | SERVICES | SERVICE | OUTLAY | |
| 0 | 0 | 0 | 0 | 42,500 | 10,000 | 0 | 0 | 52,500 |

46 4910-TECH SERVICES ADMIN CO 2 Technical Services Division clerk is
0446-Technical Services OF responsible for: processing bar files,
SOURCE OF FUNDS, THIS SVC LEVEL: 2 alarms, responding to public inquiry,
TAX SUPPORT research projects & compiling data for
special reports, coordinating meetings/
PROGRAM REVENUES 22,000 calendaring for the division, maintain
tickler files on grants, clerical
support to Resource Mgt & Dispatch,
preparing agenda & minutes for Domestic
Violence & other committees. (1 clerk)

BPAB010R
09/06/96
165627

M U N I C I P A L I T Y O F A N C H O R A G E
1997 DEPARTMENT RANKING

DEPT: 24 -POLICE
DEPT BUDGET UNIT/
RANK PROGRAM

SL SVC
CODE LVL

| PERSONNEL | | | PERSONAL | SUPPLIES | OTHER | DEBT | CAPITAL | TOTAL |
|-----------|----|---|----------|----------|----------|---------|---------|--------|
| FT | PT | T | SERVICE | | SERVICES | SERVICE | OUTLAY | |
| 1 | 0 | 0 | 51,670 | 400 | 860 | 0 | 0 | 52,930 |

47 4930-POLICE INFO/CRIME ANAL CO 2 Provide hardware maintenance and software
0446-Technical Services OF support for APSIN and PLIMS terminals
SOURCE OF FUNDS, THIS SVC LEVEL: 5 and adhoc inquiry software.
TAX SUPPORT (1 Data Spec)

| PERSONNEL | | | PERSONAL | SUPPLIES | OTHER | DEBT | CAPITAL | TOTAL |
|-----------|----|---|----------|----------|----------|---------|---------|--------|
| FT | PT | T | SERVICE | | SERVICES | SERVICE | OUTLAY | |
| 1 | 0 | 0 | 49,500 | 1,860 | 17,850 | 0 | 0 | 69,210 |

48 4710-CRIMINAL INVESTIGATION OP CO 2 Messenger to provide support to
0301-Detective Services OF Detectives and Patrol Divisions
SOURCE OF FUNDS, THIS SVC LEVEL: 3 by transporting documents to Court,
TAX SUPPORT Prosecutor, District Attorney and the
Alaska State Troopers. Pick up photo
line-ups and pick up emergency
supplies and equipment. (1 Mesgr)

| PERSONNEL | | | PERSONAL | SUPPLIES | OTHER | DEBT | CAPITAL | TOTAL |
|-----------|----|---|----------|----------|----------|---------|---------|--------|
| FT | PT | T | SERVICE | | SERVICES | SERVICE | OUTLAY | |
| 1 | 0 | 0 | 46,790 | 0 | 0 | 0 | 0 | 46,790 |

49 4750-CRIMES AGAINST CHILDREN CO 2 This level will allow the investigator
0301-Detective Services OF of 14% of assignable crimes against
SOURCE OF FUNDS, THIS SVC LEVEL: 3 children cases. (1 Det)
TAX SUPPORT

| PERSONNEL | | | PERSONAL | SUPPLIES | OTHER | DEBT | CAPITAL | TOTAL |
|-----------|----|---|----------|----------|----------|---------|---------|--------|
| FT | PT | T | SERVICE | | SERVICES | SERVICE | OUTLAY | |
| 1 | 0 | 0 | 92,870 | 0 | 0 | 0 | 0 | 92,870 |

BPAB010R
09/06/96
165627

M U N I C I P A L I T Y O F A N C H O R A G E
1997 DEPARTMENT RANKING

DEPT: 24 -POLICE
DEPT BUDGET UNIT/
RANK PROGRAM

SL SVC
CODE LVL

50 4620-PATROL OPERATIONS CO 2 Respond to criminal situations that
0300-Patrol Division OF require a police officer. This includes
SOURCE OF FUNDS, THIS SVC LEVEL: 8 reports of crimes after the fact,
TAX SUPPORT domestic disputes, threat of bodily
harm, burglaries, thefts, and numerous
varied requests for assistance.
(3 Lt; 2 Sgt; 8 Off)

| PERSONNEL | | | PERSONAL | SUPPLIES | OTHER | DEBT | CAPITAL | TOTAL |
|-----------|----|---|-----------|----------|----------|---------|---------|-----------|
| FT | PT | T | SERVICE | | SERVICES | SERVICE | OUTLAY | |
| 13 | 0 | 0 | 1,146,590 | 0 | 12,500 | 0 | 0 | 1,159,090 |

51 4940-PROPERTY & EVIDENCE CO 2 To control the property and evidence
0446-Technical Services OF inventory by maintaining records and
SOURCE OF FUNDS, THIS SVC LEVEL: 6 distributing the existing evidence
TAX SUPPORT to investigations and the public.
(6 Techs)

| PERSONNEL | | | PERSONAL | SUPPLIES | OTHER | DEBT | CAPITAL | TOTAL |
|-----------|----|---|----------|----------|----------|---------|---------|---------|
| FT | PT | T | SERVICE | | SERVICES | SERVICE | OUTLAY | |
| 6 | 0 | 0 | 283,130 | 5,850 | 1,000 | 0 | 0 | 289,980 |

52 4950-POLICE INFO SYSTEMS CO 2 Answer calls-for-service that are
0446-Technical Services OF of a non-emergency nature. Transfer
SOURCE OF FUNDS, THIS SVC LEVEL: 9 call-for-service from call-takers
TAX SUPPORT to dispatchers thru the PLIMS computer
system. Provide only minimum information
needed to officers responding to
calls-for-service.(2 Com Clks III;
6 Com Clks II; 4 Pol Clks)

| PERSONNEL | | | PERSONAL | SUPPLIES | OTHER | DEBT | CAPITAL | TOTAL |
|-----------|----|---|----------|----------|----------|---------|---------|---------|
| FT | PT | T | SERVICE | | SERVICES | SERVICE | OUTLAY | |
| 12 | 0 | 0 | 685,260 | 1,400 | 1,230 | 0 | 0 | 687,890 |

BPAB010R
09/06/96
165627

M U N I C I P A L I T Y O F A N C H O R A G E
1997 DEPARTMENT RANKING

DEPT: 24 -POLICE

DEPT BUDGET UNIT/
RANK PROGRAM

SL SVC
CODE LVL

53 4630-TRAFFIC ENFORCEMENT UNIT CO 2 To conduct Community Service Officer
0300-Patrol Division OF program, plan and organize abandoned
SOURCE OF FUNDS, THIS SVC LEVEL: 8 junk and "over 24 hour" vehicle parkin
TAX SUPPORT enforcement. Assign non-emergency
field tasks relating to: parking
problems, lost, stolen/found property.
Assist with traffic control,
confidential courier to/from courts,
and assist other sections through
temporary duty assignments. (1 CSO)

| PERSONNEL | | | PERSONAL | SUPPLIES | OTHER | DEBT | CAPITAL | TOTAL |
|-----------|----|---|----------|----------|----------|---------|---------|--------|
| FT | PT | T | SERVICE | | SERVICES | SERVICE | OUTLAY | |
| 1 | 0 | 0 | 79,630 | 0 | 310 | 0 | 0 | 79,940 |

54 4660-K-9 UNIT CO 2 To provide additional K-9 teams for
0300-Patrol Division OF building searches and suspect tracking.
SOURCE OF FUNDS, THIS SVC LEVEL: 3 (2 Off)

| PERSONNEL | | | PERSONAL | SUPPLIES | OTHER | DEBT | CAPITAL | TOTAL |
|-----------|----|---|----------|----------|----------|---------|---------|---------|
| FT | PT | T | SERVICE | | SERVICES | SERVICE | OUTLAY | |
| 2 | 0 | 0 | 150,600 | 0 | 0 | 0 | 0 | 150,600 |

55 4740-NARCOTICS ENFORCEMENT CO 2 To seize an additional 5% of drugs and
0301-Detective Services OF drug assets. To increase the
SOURCE OF FUNDS, THIS SVC LEVEL: 6 enforcement productivity directed at
TAX SUPPORT drug related offenses. (1 DET)

| PERSONNEL | | | PERSONAL | SUPPLIES | OTHER | DEBT | CAPITAL | TOTAL |
|-----------|----|---|----------|----------|----------|---------|---------|--------|
| FT | PT | T | SERVICE | | SERVICES | SERVICE | OUTLAY | |
| 1 | 0 | 0 | 77,800 | 1,000 | 1,050 | 0 | 0 | 79,850 |

BPAB010R
09/06/96
165627

MUNICIPALITY OF ANCHORAGE
1997 DEPARTMENT RANKING

DEPT: 24 -POLICE
DEPT BUDGET UNIT/
RANK PROGRAM

SL SVC
CODE LVL

56 4340-PUBLIC RELATIONS CO 2 To educate and inform the public about
0298-Staff Services OF preventing crimes or falling victim to
SOURCE OF FUNDS, THIS SVC LEVEL: 4 crimes, how to report crimes to the
TAX SUPPORT police, and to inform the news media on
public safety matters. Programs include:
Crime Stoppers, Neighborhood Watch, Drug
Abuse, Safety Programs, Public Service
Announcements, Aircraft Watch.
(1 Cr Prev Spec)

| PERSONNEL | | | PERSONAL | SUPPLIES | OTHER | DEBT | CAPITAL | TOTAL |
|-----------|----|---|----------|----------|----------|---------|---------|--------|
| FT | PT | T | SERVICE | | SERVICES | SERVICE | OUTLAY | |
| 1 | 0 | 0 | 70,960 | 5,000 | 2,000 | 0 | 0 | 77,960 |

57 4980-FISCAL MANAGEMENT CO 3 Payment of 1997 Debt Service of G.O.
0446-Technical Services OF Bonds.
SOURCE OF FUNDS, THIS SVC LEVEL: 8
TAX SUPPORT

| PERSONNEL | | | PERSONAL | SUPPLIES | OTHER | DEBT | CAPITAL | TOTAL |
|-----------|----|---|----------|----------|----------|-----------|---------|-----------|
| FT | PT | T | SERVICE | | SERVICES | SERVICE | OUTLAY | |
| 0 | 0 | 0 | 0 | 0 | 0 | 1,062,980 | 0 | 1,062,980 |

58 4980-FISCAL MANAGEMENT CO 7 APD department operational travel costs.
0446-Technical Services OF
SOURCE OF FUNDS, THIS SVC LEVEL: 8
TAX SUPPORT

| PERSONNEL | | | PERSONAL | SUPPLIES | OTHER | DEBT | CAPITAL | TOTAL |
|-----------|----|---|----------|----------|----------|---------|---------|--------|
| FT | PT | T | SERVICE | | SERVICES | SERVICE | OUTLAY | |
| 0 | 0 | 0 | 0 | 0 | 14,640 | 0 | 0 | 14,640 |

59 4720-PERSON CRIMES CO 3 This level will provide individual
0301-Detective Services OF command of the Homicide/Assault, Crimes
SOURCE OF FUNDS, THIS SVC LEVEL: 7 Against Children, and Sexual Assault
TAX SUPPORT units. (1 Lt)

BPAB010R
09/06/96
165627

M U N I C I P A L I T Y O F A N C H O R A G E
1997 DEPARTMENT RANKING

DEPT: 24 -POLICE
DEPT BUDGET UNIT/
RANK PROGRAM

SL SVC
CODE LVL

| PERSONNEL | | | PERSONAL | SUPPLIES | OTHER | DEBT | CAPITAL | TOTAL |
|-----------|----|---|----------|----------|----------|---------|---------|---------|
| FT | PT | T | SERVICE | | SERVICES | SERVICE | OUTLAY | |
| 1 | 0 | 0 | 105,400 | 200 | 1,000 | 0 | 0 | 106,600 |

60 4110-POLICE ADMINISTRATION CO 3 To maintain the administrative document
0296-Police Administration OF and the scheduling of the Chief of
SOURCE OF FUNDS, THIS SVC LEVEL: 5 Police. This position is the first
TAX SUPPORT staff. (Sr Office Associate)

| PERSONNEL | | | PERSONAL | SUPPLIES | OTHER | DEBT | CAPITAL | TOTAL |
|-----------|----|---|----------|----------|----------|---------|---------|--------|
| FT | PT | T | SERVICE | | SERVICES | SERVICE | OUTLAY | |
| 1 | 0 | 0 | 38,930 | 0 | 200 | 0 | 0 | 39,130 |

61 4330-POLICE TRAINING CO 3 Coordinate minimum training on mandated
0298-Staff Services OF topics, such as first aid, and the use
SOURCE OF FUNDS, THIS SVC LEVEL: 6 of force for sworn personnel.
TAX SUPPORT (1 Sr. Pat Off)

| PERSONNEL | | | PERSONAL | SUPPLIES | OTHER | DEBT | CAPITAL | TOTAL |
|-----------|----|---|----------|----------|----------|---------|---------|---------|
| FT | PT | T | SERVICE | | SERVICES | SERVICE | OUTLAY | |
| 1 | 0 | 0 | 88,380 | 28,300 | 5,000 | 0 | 0 | 121,680 |

62 4710-CRIMINAL INVESTIGATION OP CO 3 Monies needed to aid in on-going
0301-Detective Services OF investigations, paying informants,
SOURCE OF FUNDS, THIS SVC LEVEL: 3 other emergency investigation expenses,
TAX SUPPORT and additional communications costs.

| PERSONNEL | | | PERSONAL | SUPPLIES | OTHER | DEBT | CAPITAL | TOTAL |
|-----------|----|---|----------|----------|----------|---------|---------|-------|
| FT | PT | T | SERVICE | | SERVICES | SERVICE | OUTLAY | |
| 0 | 0 | 0 | 0 | 0 | 8,000 | 0 | 0 | 8,000 |

BPAB010R
09/06/96
165627

MUNICIPALITY OF ANCHORAGE
1997 DEPARTMENT RANKING

DEPT: 24 -POLICE

DEPT BUDGET UNIT/
RANK PROGRAM

SL SVC
CODE LVL

63 4640-WARRANTS CO 3 To serve outstanding criminal and
0300-Patrol Division OF serious traffic warrants for arrest.
SOURCE OF FUNDS, THIS SVC LEVEL: 6 (2 Off)
TAX SUPPORT

| PERSONNEL | | | PERSONAL | SUPPLIES | OTHER | DEBT | CAPITAL | TOTAL |
|-----------|----|---|----------|----------|----------|---------|---------|---------|
| FT | PT | T | SERVICE | | SERVICES | SERVICE | OUTLAY | |
| 2 | 0 | 0 | 167,240 | 0 | 850 | 0 | 0 | 168,090 |

64 4950-POLICE INFO SYSTEMS CO 3 Answer calls-for-service that are both
0446-Technical Services OF emergency and non-emergency nature.
SOURCE OF FUNDS, THIS SVC LEVEL: 9 Provide adequate information
TAX SUPPORT to the officers responding to calls.
Provide information requested by
officers, such as warrant checks,
wreckers, etc. Most calls-for-service
would be entered into the PLIMS computer
system. (6 Pol Clks)

| PERSONNEL | | | PERSONAL | SUPPLIES | OTHER | DEBT | CAPITAL | TOTAL |
|-----------|----|---|----------|----------|----------|---------|---------|---------|
| FT | PT | T | SERVICE | | SERVICES | SERVICE | OUTLAY | |
| 6 | 0 | 0 | 276,660 | 0 | 0 | 0 | 0 | 276,660 |

65 4320-PERSONNEL/PAYROLL CO 3 Payroll clerk processes timecards for
0298-Staff Services OF APD personnel and tracks overtime and
SOURCE OF FUNDS, THIS SVC LEVEL: 6 leave requests. Troubleshoots payroll
TAX SUPPORT records and pay discrepancies. Research
payroll problems, and performs payroll
audits. (1 clerk)

| PERSONNEL | | | PERSONAL | SUPPLIES | OTHER | DEBT | CAPITAL | TOTAL |
|-----------|----|---|----------|----------|----------|---------|---------|--------|
| FT | PT | T | SERVICE | | SERVICES | SERVICE | OUTLAY | |
| 1 | 0 | 0 | 53,960 | 300 | 400 | 0 | 0 | 54,660 |

66 4620-PATROL OPERATIONS CO 3 Respond to additional criminal
0300-Patrol Division OF situations that require a Police
SOURCE OF FUNDS, THIS SVC LEVEL: 8 Officer to include prowlers, trespassers
TAX SUPPORT public disturbances, drunkenness,
vandalism, and suspicious persons.
Organize and deploy the resources
of the Reserve Officers.
(1 Lt; 1 Sgt; 10 Off)

BPAB010R
09/06/96
165627

M U N I C I P A L I T Y O F A N C H O R A G E
1997 DEPARTMENT RANKING

DEPT: 24 -POLICE
DEPT BUDGET UNIT/
RANK PROGRAM

SL SVC
CODE LVL

| PERSONNEL | | | PERSONAL | SUPPLIES | OTHER | DEBT | CAPITAL | TOTAL |
|-----------|----|---|----------|----------|----------|---------|---------|---------|
| FT | PT | T | SERVICE | | SERVICES | SERVICE | OUTLAY | |
| 12 | 0 | 0 | 983,260 | 0 | 12,500 | 0 | 0 | 995,760 |

| | | | | | | | | |
|----|----------------------------------|--|--|--|----|----|--|--|
| 67 | 4610-PATROL COMMANDER | | | | CO | 3 | To maintain the records for the Police | |
| | 0300-Patrol Division | | | | | OF | Reserve Program and other administrati | |
| | SOURCE OF FUNDS, THIS SVC LEVEL: | | | | | 4 | documents involving the management and | |
| | TAX SUPPORT | | | | | | control of deploying large numbers of | |
| | | | | | | | police officers, warrant officers, and | |
| | | | | | | | K-9 officers. Coordinates court | |
| | | | | | | | appearances between department staff | |
| | | | | | | | and the court system. | |
| | | | | | | | (1 clerk; 1 Warrant Off) | |

| PERSONNEL | | | PERSONAL | SUPPLIES | OTHER | DEBT | CAPITAL | TOTAL |
|-----------|----|---|----------|----------|----------|---------|---------|---------|
| FT | PT | T | SERVICE | | SERVICES | SERVICE | OUTLAY | |
| 2 | 0 | 0 | 132,470 | 0 | 500 | 0 | 0 | 132,970 |

| | | | | | | | | |
|----|----------------------------------|--|--|--|----|----|--|--|
| 68 | 4750-CRIMES AGAINST CHILDREN | | | | CO | 3 | This level will allow investigation of | |
| | 0301-Detective Services | | | | | OF | 14% of the assignable crimes against | |
| | SOURCE OF FUNDS, THIS SVC LEVEL: | | | | | 3 | children cases. (1 Det) | |
| | TAX SUPPORT | | | | | | | |

| PERSONNEL | | | PERSONAL | SUPPLIES | OTHER | DEBT | CAPITAL | TOTAL |
|-----------|----|---|----------|----------|----------|---------|---------|--------|
| FT | PT | T | SERVICE | | SERVICES | SERVICE | OUTLAY | |
| 1 | 0 | 0 | 85,320 | 0 | 0 | 0 | 0 | 85,320 |

| | | | | | | | | |
|----|----------------------------------|--|--|--|----|----|---|--|
| 69 | 4920-POLICE RECORDS | | | | CO | 3 | To respond to requests for reports from | |
| | 0446-Technical Services | | | | | OF | insurance companies, citizens, Municipa | |
| | SOURCE OF FUNDS, THIS SVC LEVEL: | | | | | 10 | agencies, other law enforcement agencie | |
| | TAX SUPPORT | | | | | | attorneys, and federal agencies. | |
| | | | | | | | Provide uniforms and equipment to | |
| | | | | | | | police officers and staff. Maintain an | |
| | | | | | | | adequate inventory of police forms | |
| | | | | | | | and citations, pens, copy and computer | |
| | | | | | | | paper, misc. office supplies. | |
| | | | | | | | Distributes the incoming mail. (6 Clks) | |

BPAB010R
09/06/96
165627

M U N I C I P A L I T Y O F A N C H O R A G E
1997 DEPARTMENT RANKING

DEPT: 24 -POLICE
DEPT BUDGET UNIT/
RANK PROGRAM

SL SVC
CODE LVL

| PERSONNEL | | | PERSONAL | SUPPLIES | OTHER | DEBT | CAPITAL | TOTAL |
|-----------|----|---|----------|----------|----------|---------|---------|---------|
| FT | PT | T | SERVICE | | SERVICES | SERVICE | OUTLAY | |
| 6 | 0 | 0 | 290,550 | 2,500 | 0 | 0 | 0 | 293,050 |

| | | | | | | | |
|----|----------------------------------|--|--|--|----|----|---|
| 70 | 4940-PROPERTY & EVIDENCE | | | | CO | 3 | To enter criminal evidence and property data into PLIMS in order to maintain an accurate inventory and status. Mail out notices to the public for return of property. Answer all incoming phone inquiries and schedule appointments to release property to the public and other outside agencies. (1 Clk) |
| | 0446-Technical Services | | | | | OF | |
| | SOURCE OF FUNDS, THIS SVC LEVEL: | | | | | 6 | |
| | TAX SUPPORT | | | | | | |

| PERSONNEL | | | PERSONAL | SUPPLIES | OTHER | DEBT | CAPITAL | TOTAL |
|-----------|----|---|----------|----------|----------|---------|---------|--------|
| FT | PT | T | SERVICE | | SERVICES | SERVICE | OUTLAY | |
| 1 | 0 | 0 | 50,170 | 0 | 0 | 0 | 0 | 50,170 |

| | | | | | | | |
|----|----------------------------------|--|--|--|----|----|---|
| 71 | 4740-NARCOTICS ENFORCEMENT | | | | CO | 3 | Provide command supervision for the Narcotics Section. (1 Lt) |
| | 0301-Detective Services | | | | | OF | |
| | SOURCE OF FUNDS, THIS SVC LEVEL: | | | | | 6 | |
| | TAX SUPPORT | | | | | | |

| PERSONNEL | | | PERSONAL | SUPPLIES | OTHER | DEBT | CAPITAL | TOTAL |
|-----------|----|---|----------|----------|----------|---------|---------|---------|
| FT | PT | T | SERVICE | | SERVICES | SERVICE | OUTLAY | |
| 1 | 0 | 0 | 114,870 | 1,000 | 1,050 | 0 | 0 | 116,920 |

| | | | | | | | |
|----|----------------------------------|--|--|--|----|----|--|
| 72 | 4310-COMMANDER STAFF SERVICES | | | | CO | 3 | Investigate allegations of inappropriate conduct of police employees, citizen complaints against employees, review supervisor disciplinary action reports, assist in defense in litigation cases against the department, and conduct inspections of police programs to ensure operational compliance with police policies. All investigations and reviews would be conducted. (1 Srgt) |
| | 0298-Staff Services | | | | | OF | |
| | SOURCE OF FUNDS, THIS SVC LEVEL: | | | | | 4 | |
| | TAX SUPPORT | | | | | | |

BPAB010R
09/06/96
165627

M U N I C I P A L I T Y O F A N C H O R A G E
1997 DEPARTMENT RANKING

DEPT: 24 -POLICE
DEPT BUDGET UNIT/
RANK PROGRAM

SL SVC
CODE LVL

| PERSONNEL | | | PERSONAL | SUPPLIES | OTHER | DEBT | CAPITAL | TOTAL |
|-----------|----|---|----------|----------|----------|---------|---------|--------|
| FT | PT | T | SERVICE | | SERVICES | SERVICE | OUTLAY | |
| 1 | 0 | 0 | 94,800 | 200 | 600 | 0 | 0 | 95,600 |

73 4770-CRIME LABORATORY CO 3 To aid in solving crimes by producing
0301-Detective Services OF crime scene photos and other
SOURCE OF FUNDS, THIS SVC LEVEL: 4 evidentiary identifying photographs.
TAX SUPPORT (1 Asst ID Spec)

| PERSONNEL | | | PERSONAL | SUPPLIES | OTHER | DEBT | CAPITAL | TOTAL |
|-----------|----|---|----------|----------|----------|---------|---------|--------|
| FT | PT | T | SERVICE | | SERVICES | SERVICE | OUTLAY | |
| 1 | 0 | 0 | 46,630 | 8,000 | 2,000 | 0 | 0 | 56,630 |

74 4730-PROPERTY CRIMES CO 3 This level would allow the investigati
0301-Detective Services OF of 10% of assignable property crime
SOURCE OF FUNDS, THIS SVC LEVEL: 7 cases and clerical support.
TAX SUPPORT (1 Det; 1 Clk)

| PERSONNEL | | | PERSONAL | SUPPLIES | OTHER | DEBT | CAPITAL | TOTAL |
|-----------|----|---|----------|----------|----------|---------|---------|---------|
| FT | PT | T | SERVICE | | SERVICES | SERVICE | OUTLAY | |
| 2 | 0 | 0 | 138,660 | 0 | 1,500 | 0 | 0 | 140,160 |

75 4930-POLICE INFO/CRIME ANAL CO 3 UPS (Uninterruptable Power Supply)
0446-Technical Services OF maintenance.
SOURCE OF FUNDS, THIS SVC LEVEL: 5
TAX SUPPORT

| PERSONNEL | | | PERSONAL | SUPPLIES | OTHER | DEBT | CAPITAL | TOTAL |
|-----------|----|---|----------|----------|----------|---------|---------|-------|
| FT | PT | T | SERVICE | | SERVICES | SERVICE | OUTLAY | |
| 0 | 0 | 0 | 0 | 0 | 5,000 | 0 | 0 | 5,000 |

BPAB010R
09/06/96
165627

MUNICIPALITY OF ANCHORAGE
1997 DEPARTMENT RANKING

DEPT: 24 -POLICE
DEPT BUDGET UNIT/
RANK PROGRAM

SL SVC
CODE LVL

76 4630-TRAFFIC ENFORCEMENT UNIT CO 3 To conduct Community Service Officer
0300-Patrol Division OF program. Plan and organize abandoned,
SOURCE OF FUNDS, THIS SVC LEVEL: 8 junk, & "over 24 hour" vehicle parking
TAX SUPPORT enforcement; assign non-emergency
field tasks relating to: parking
problems, lost, stolen or found
property, assist with traffic control,
confidential courier to/from courts,
and assisting other sections through
temporary duty assignments. (1 CSO)

| PERSONNEL | | | PERSONAL | SUPPLIES | OTHER | DEBT | CAPITAL | TOTAL |
|-----------|----|---|----------|----------|----------|---------|---------|--------|
| FT | PT | T | SERVICE | | SERVICES | SERVICE | OUTLAY | |
| 1 | 0 | 0 | 65,450 | 0 | 310 | 0 | 0 | 65,760 |

77 4660-K-9 UNIT CO 3 To provide additional K-9 officers to
0300-Patrol Division OF maintain current year level of service.
SOURCE OF FUNDS, THIS SVC LEVEL: 3 (1 Off)
TAX SUPPORT

| PERSONNEL | | | PERSONAL | SUPPLIES | OTHER | DEBT | CAPITAL | TOTAL |
|-----------|----|---|----------|----------|----------|---------|---------|--------|
| FT | PT | T | SERVICE | | SERVICES | SERVICE | OUTLAY | |
| 1 | 0 | 0 | 80,200 | 0 | 0 | 0 | 0 | 80,200 |

78 4340-PUBLIC RELATIONS CO 4 To plan, organize, coordinate and train
0298-Staff Services OF Neighborhood Crime Watch groups in
SOURCE OF FUNDS, THIS SVC LEVEL: 4 various neighborhoods. Facilitate crime
TAX SUPPORT reduction activities between the
Neighborhood Watch groups and public
safety agencies.

| PERSONNEL | | | PERSONAL | SUPPLIES | OTHER | DEBT | CAPITAL | TOTAL |
|-----------|----|---|----------|----------|----------|---------|---------|--------|
| FT | PT | T | SERVICE | | SERVICES | SERVICE | OUTLAY | |
| 0 | 0 | 0 | 0 | 0 | 73,000 | 0 | 0 | 73,000 |

BPAB010R
 09/06/96
 165627

M U N I C I P A L I T Y O F A N C H O R A G E
 1997 DEPARTMENT RANKING

DEPT: 24 -POLICE

DEPT BUDGET UNIT/ SL SVC
 RANK PROGRAM CODE LVL

79 4110-POLICE ADMINISTRATION CO 4 This is the exclusive support for the
 0296-Police Administration OF Staff Inspections unit and backup for
 SOURCE OF FUNDS, THIS SVC LEVEL: 5 the Chief's secretary. (Sr Police Clerl
 TAX SUPPORT

| PERSONNEL | | | PERSONAL | SUPPLIES | OTHER | DEBT | CAPITAL | TOTAL |
|-----------|----|---|----------|----------|----------|---------|---------|--------|
| FT | PT | T | SERVICE | | SERVICES | SERVICE | OUTLAY | |
| 1 | 0 | 0 | 54,100 | 0 | 200 | 0 | 0 | 54,300 |

80 4720-PERSON CRIMES CO 4 This level would allow investigation of
 0301-Detective Services OF 8% of assignable person crime cases.
 SOURCE OF FUNDS, THIS SVC LEVEL: 7 (1 Det)
 TAX SUPPORT

| PERSONNEL | | | PERSONAL | SUPPLIES | OTHER | DEBT | CAPITAL | TOTAL |
|-----------|----|---|----------|----------|----------|---------|---------|--------|
| FT | PT | T | SERVICE | | SERVICES | SERVICE | OUTLAY | |
| 1 | 0 | 0 | 91,700 | 200 | 0 | 0 | 0 | 91,900 |

81 4730-PROPERTY CRIMES CO 4 This level will provide independent
 0301-Detective Services OF supervision of the Burglary Unit.
 SOURCE OF FUNDS, THIS SVC LEVEL: 7 (1 Sgt)
 TAX SUPPORT

| PERSONNEL | | | PERSONAL | SUPPLIES | OTHER | DEBT | CAPITAL | TOTAL |
|-----------|----|---|----------|----------|----------|---------|---------|---------|
| FT | PT | T | SERVICE | | SERVICES | SERVICE | OUTLAY | |
| 1 | 0 | 0 | 101,110 | 0 | 1,000 | 0 | 0 | 102,110 |

82 4740-NARCOTICS ENFORCEMENT CO 4 To broaden the scope of enforcement
 0301-Detective Services OF activities to include investigation of
 SOURCE OF FUNDS, THIS SVC LEVEL: 6 mid-level drug dealers and conduct
 TAX SUPPORT subsequent prosecutions at the State
 level. To seize an additional 5% of
 drugs and drug assets. To increase by
 10% the enforcement efforts aimed at
 vice related offenses. (1 Det)

BPAB010R
09/06/96
165627

MUNICIPALITY OF ANCHORAGE
1997 DEPARTMENT RANKING

DEPT: 24 -POLICE
DEPT BUDGET UNIT/
RANK PROGRAM

SL SVC
CODE LVL

| PERSONNEL | | | PERSONAL | SUPPLIES | OTHER | DEBT | CAPITAL | TOTAL |
|-----------|----|---|----------|----------|----------|---------|---------|--------|
| FT | PT | T | SERVICE | | SERVICES | SERVICE | OUTLAY | |
| 1 | 0 | 0 | 50,570 | 0 | 1,050 | 0 | 0 | 51,620 |

83 4640-WARRANTS CO 4 To reduce backlog of outstanding
0300-Patrol Division OF criminal and serious traffic warrants
SOURCE OF FUNDS, THIS SVC LEVEL: 6 for arrest. (2 Clerk)
TAX SUPPORT

| PERSONNEL | | | PERSONAL | SUPPLIES | OTHER | DEBT | CAPITAL | TOTAL |
|-----------|----|---|----------|----------|----------|---------|---------|---------|
| FT | PT | T | SERVICE | | SERVICES | SERVICE | OUTLAY | |
| 2 | 0 | 0 | 110,330 | 0 | 850 | 0 | 0 | 111,180 |

84 4950-POLICE INFO SYSTEMS CO 4 To plan and organize 24-hour operation
0446-Technical Services OF of the Police Emergency Communications
SOURCE OF FUNDS, THIS SVC LEVEL: 9 Center. Coordinate the Communications
TAX SUPPORT Section so that it dovetails with
the needs of other sections within the
department. Handle personnel issues
that evolve from the employees assigned
to the Section. (1 Sgt; 1 Clk III)

| PERSONNEL | | | PERSONAL | SUPPLIES | OTHER | DEBT | CAPITAL | TOTAL |
|-----------|----|---|----------|----------|----------|---------|---------|---------|
| FT | PT | T | SERVICE | | SERVICES | SERVICE | OUTLAY | |
| 2 | 0 | 0 | 152,440 | 0 | 0 | 0 | 0 | 152,440 |

85 4610-PATROL COMMANDER CO 4 To manage the inventory of vehicles
0300-Patrol Division OF impounded for DWI offenses.
SOURCE OF FUNDS, THIS SVC LEVEL: 4 Coordinates with the Municipal
TAX SUPPORT Prosecutor those vehicles that are to
be forfeited. Oversee and coordinate
the towing contract.
(2 Techs)

| PERSONNEL | | | PERSONAL | SUPPLIES | OTHER | DEBT | CAPITAL | TOTAL |
|-----------|----|---|----------|----------|----------|---------|---------|---------|
| FT | PT | T | SERVICE | | SERVICES | SERVICE | OUTLAY | |
| 2 | 0 | 0 | 97,090 | 0 | 24,500 | 0 | 0 | 121,590 |

BPAB010R
09/06/96
165627

M U N I C I P A L I T Y O F A N C H O R A G E
1997 DEPARTMENT RANKING

DEPT: 24 -POLICE

DEPT BUDGET UNIT/
RANK PROGRAM

SL SVC
CODE LVL

86 4920-POLICE RECORDS CO 4 To transcribe and type police reports
0446-Technical Services OF and to reduce the current typing backlog
SOURCE OF FUNDS, THIS SVC LEVEL: 10 of tapes. Investigators cannot work
TAX SUPPORT on cases until the tapes are transcribed
and forwarded to the investigating
units. Tapes and reports must be
completed and available for prosecutors
and the courts within 1 to 10 days
from date of arrest. (5 Clks)

| PERSONNEL | | | PERSONAL | SUPPLIES | OTHER | DEBT | CAPITAL | TOTAL |
|-----------|----|---|----------|----------|----------|---------|---------|---------|
| FT | PT | T | SERVICE | | SERVICES | SERVICE | OUTLAY | |
| 5 | 0 | 0 | 238,470 | 0 | 0 | 0 | 0 | 238,470 |

87 4940-PROPERTY & EVIDENCE CO 4 To reduce the backlog of disposable
0446-Technical Services OF property in order to operate the storage
SOURCE OF FUNDS, THIS SVC LEVEL: 6 program within the existing allocated
TAX SUPPORT space. (2 Clks)

| PERSONNEL | | | PERSONAL | SUPPLIES | OTHER | DEBT | CAPITAL | TOTAL |
|-----------|----|---|----------|----------|----------|---------|---------|---------|
| FT | PT | T | SERVICE | | SERVICES | SERVICE | OUTLAY | |
| 2 | 0 | 0 | 107,390 | 0 | 0 | 0 | 0 | 107,390 |

88 4310-COMMANDER STAFF SERVICES CO 4 To provide managerial support to the
0298-Staff Services OF Training and Crime Prevention units.
SOURCE OF FUNDS, THIS SVC LEVEL: 4 (1 Lt)
TAX SUPPORT

| PERSONNEL | | | PERSONAL | SUPPLIES | OTHER | DEBT | CAPITAL | TOTAL |
|-----------|----|---|----------|----------|----------|---------|---------|---------|
| FT | PT | T | SERVICE | | SERVICES | SERVICE | OUTLAY | |
| 1 | 0 | 0 | 107,630 | 200 | 600 | 0 | 0 | 108,430 |

89 4620-PATROL OPERATIONS CO 4 Respond to additional criminal
0300-Patrol Division OF situations involving drug related
SOURCE OF FUNDS, THIS SVC LEVEL: 8 street crimes that occur in a
TAX SUPPORT neighborhood setting. (8 Off)

BPAB010R
 09/06/96
 165627

M U N I C I P A L I T Y O F A N C H O R A G E
 1997 DEPARTMENT RANKING

DEPT: 24 -POLICE
 DEPT BUDGET UNIT/
 RANK PROGRAM

SL SVC
 CODE LVL

| PERSONNEL | | | PERSONAL SERVICE | SUPPLIES | OTHER SERVICES | DEBT SERVICE | CAPITAL OUTLAY | TOTAL |
|-----------|----|---|------------------|----------|----------------|--------------|----------------|---------|
| FT | PT | T | | | | | | |
| 8 | 0 | 0 | 615,590 | 0 | 12,500 | 0 | 0 | 628,090 |

90 4960-RESOURCE MANAGEMENT CO 3 Uniform and uniform equipment issue for
 0446-Technical Services OF the first police academy of 1997.
 SOURCE OF FUNDS, THIS SVC LEVEL: 5
 TAX SUPPORT

| PERSONNEL | | | PERSONAL SERVICE | SUPPLIES | OTHER SERVICES | DEBT SERVICE | CAPITAL OUTLAY | TOTAL |
|-----------|----|---|------------------|----------|----------------|--------------|----------------|--------|
| FT | PT | T | | | | | | |
| 0 | 0 | 0 | 0 | 43,560 | 0 | 0 | 0 | 43,560 |

91 4770-CRIME LABORATORY CO 4 This service level necessary to maintain
 0301-Detective Services OF the fingerprint system (AFIS)
 SOURCE OF FUNDS, THIS SVC LEVEL: 4
 TAX SUPPORT

| PERSONNEL | | | PERSONAL SERVICE | SUPPLIES | OTHER SERVICES | DEBT SERVICE | CAPITAL OUTLAY | TOTAL |
|-----------|----|---|------------------|----------|----------------|--------------|----------------|-------|
| FT | PT | T | | | | | | |
| 0 | 0 | 0 | 0 | 0 | 8,350 | 0 | 0 | 8,350 |

92 4980-FISCAL MANAGEMENT CO 4 To cover the APD contribution required
 0446-Technical Services OF by the grants.
 SOURCE OF FUNDS, THIS SVC LEVEL: 8
 TAX SUPPORT

| PERSONNEL | | | PERSONAL SERVICE | SUPPLIES | OTHER SERVICES | DEBT SERVICE | CAPITAL OUTLAY | TOTAL |
|-----------|----|---|------------------|----------|----------------|--------------|----------------|---------|
| FT | PT | T | | | | | | |
| 0 | 0 | 0 | 0 | 0 | 714,140 | 0 | 0 | 714,140 |

BPAB010R
 09/06/96
 165627

M U N I C I P A L I T Y O F A N C H O R A G E
 1997 DEPARTMENT RANKING

DEPT: 24 -POLICE
 DEPT BUDGET UNIT/
 RANK PROGRAM

SL SVC
 CODE LVL

93 4320-PERSONNEL/PAYROLL
 0298-Staff Services
 SOURCE OF FUNDS, THIS SVC LEVEL:
 TAX SUPPORT

CO 4 Performs background investigations for
 OF police applicants, administers applica
 6 testing procedures and recruits
 qualified minority and women applicants
 (Sr Pat Off)

| PERSONNEL | | | PERSONAL | SUPPLIES | OTHER | DEBT | CAPITAL | TOTAL |
|-----------|----|---|----------|----------|----------|---------|---------|--------|
| FT | PT | T | SERVICE | | SERVICES | SERVICE | OUTLAY | |
| 1 | 0 | 0 | 89,180 | 1,500 | 0 | 0 | 0 | 90,680 |

94 4630-TRAFFIC ENFORCEMENT UNIT
 0300-Patrol Division
 SOURCE OF FUNDS, THIS SVC LEVEL:
 TAX SUPPORT

CO 4 Community Service Officer program to
 OF plan and organize abandoned, junk and
 8 "over 24 hour" vehicle parking
 enforcement; assign non-emergency field
 tasks relating to parking problems;
 lost, stolen or found property; assist
 traffic control; confidential courier
 to and from courts, and assisting other
 sections in need of temporary duty
 personnel. (1 CSO)

| PERSONNEL | | | PERSONAL | SUPPLIES | OTHER | DEBT | CAPITAL | TOTAL |
|-----------|----|---|----------|----------|----------|---------|---------|--------|
| FT | PT | T | SERVICE | | SERVICES | SERVICE | OUTLAY | |
| 1 | 0 | 0 | 65,450 | 0 | 310 | 0 | 0 | 65,760 |

95 4330-POLICE TRAINING
 0298-Staff Services
 SOURCE OF FUNDS, THIS SVC LEVEL:
 TAX SUPPORT

CO 4 To improve the skills of APD non sworn
 OF personnel by coordinating all departmen
 6 training, both inservice internal
 training and training offered by
 other agencies. (1 Sr Patrol Off)

| PERSONNEL | | | PERSONAL | SUPPLIES | OTHER | DEBT | CAPITAL | TOTAL |
|-----------|----|---|----------|----------|----------|---------|---------|--------|
| FT | PT | T | SERVICE | | SERVICES | SERVICE | OUTLAY | |
| 1 | 0 | 0 | 78,660 | 2,990 | 1,170 | 0 | 0 | 82,820 |

BPAB010R
09/06/96
165627

MUNICIPALITY OF ANCHORAGE
1997 DEPARTMENT RANKING

DEPT: 24 -POLICE

DEPT BUDGET UNIT/
RANK PROGRAM

SL SVC
CODE LVL

96 4920-POLICE RECORDS CO 5 To transcribe and type police reports,
0446-Technical Services OF and to reduce the typing backlog.
SOURCE OF FUNDS, THIS SVC LEVEL: 10 (2 Clks)
TAX SUPPORT

| PERSONNEL | | | PERSONAL | SUPPLIES | OTHER | DEBT | CAPITAL | TOTAL |
|-----------|----|---|----------|----------|-------|------|---------|--------|
| FT | PT | T | SERVICE | | | | | |
| 2 | 0 | 0 | 98,100 | 0 | 0 | 0 | 0 | 98,100 |

97 4950-POLICE INFO SYSTEMS CO 5 Provide information in a timely manner
0446-Technical Services OF to officers handling calls-for-service.
SOURCE OF FUNDS, THIS SVC LEVEL: 9 Examples would be warrant checks,
TAX SUPPORT wreckers at accident scenes,
citizen requests received in the field.
All calls would be entered into the
departments PLIMS computer system.
(1 Com Clk; 3 Clks)

| PERSONNEL | | | PERSONAL | SUPPLIES | OTHER | DEBT | CAPITAL | TOTAL |
|-----------|----|---|----------|----------|-------|------|---------|---------|
| FT | PT | T | SERVICE | | | | | |
| 4 | 0 | 0 | 217,930 | 0 | 0 | 0 | 0 | 217,930 |

98 4640-WARRANTS CO 5 To return the unit to the current level
0300-Patrol Division OF of service by reducing the backlog in
SOURCE OF FUNDS, THIS SVC LEVEL: 6 outstanding criminal and serious traffic
TAX SUPPORT warrants. (1 clerk)

| PERSONNEL | | | PERSONAL | SUPPLIES | OTHER | DEBT | CAPITAL | TOTAL |
|-----------|----|---|----------|----------|-------|------|---------|--------|
| FT | PT | T | SERVICE | | | | | |
| 1 | 0 | 0 | 51,800 | 0 | 850 | 0 | 0 | 52,650 |

99 4720-PERSON CRIMES CO 5 Individual supervision of the Sexual
0301-Detective Services OF Assault unit would be provided.
SOURCE OF FUNDS, THIS SVC LEVEL: 7 (1 Sgt)
TAX SUPPORT

BPAB010R
 09/06/96
 165627

M U N I C I P A L I T Y O F A N C H O R A G E
 1997 DEPARTMENT RANKING

DEPT: 24 -POLICE
 DEPT BUDGET UNIT/
 RANK PROGRAM

SL SVC
 CODE LVL

| PERSONNEL | | | PERSONAL | SUPPLIES | OTHER | DEBT | CAPITAL | TOTAL |
|-----------|----|---|----------|----------|----------|---------|---------|--------|
| FT | PT | T | SERVICE | | SERVICES | SERVICE | OUTLAY | |
| 1 | 0 | 0 | 94,950 | 0 | 1,000 | 0 | 0 | 95,950 |

100 4980-FISCAL MANAGEMENT CO 5 Repair and maintenance contracts for t
 0446-Technical Services OF entire Department. (Non-building)
 SOURCE OF FUNDS, THIS SVC LEVEL: 8
 TAX SUPPORT

| PERSONNEL | | | PERSONAL | SUPPLIES | OTHER | DEBT | CAPITAL | TOTAL |
|-----------|----|---|----------|----------|----------|---------|---------|---------|
| FT | PT | T | SERVICE | | SERVICES | SERVICE | OUTLAY | |
| 0 | 0 | 0 | 0 | 0 | 97,580 | 0 | 20,000 | 117,580 |

101 4740-NARCOTICS ENFORCEMENT CO 5 This level will provide direct
 0301-Detective Services OF supervision of the General
 SOURCE OF FUNDS, THIS SVC LEVEL: 6 Investigations Unit and the street lev
 TAX SUPPORT enforcement function of the Narcotics
 section. (1 Sgt)

| PERSONNEL | | | PERSONAL | SUPPLIES | OTHER | DEBT | CAPITAL | TOTAL |
|-----------|----|---|----------|----------|----------|---------|---------|--------|
| FT | PT | T | SERVICE | | SERVICES | SERVICE | OUTLAY | |
| 1 | 0 | 0 | 88,450 | 0 | 0 | 0 | 0 | 88,450 |

102 4320-PERSONNEL/PAYROLL CO 5 Cost of processing applicants for hire
 0298-Staff Services OF as police officers for a 1997 academy.
 SOURCE OF FUNDS, THIS SVC LEVEL: 6 This level covers cost for an academy
 TAX SUPPORT to replace retired and resigned sworn
 personnel.

| PERSONNEL | | | PERSONAL | SUPPLIES | OTHER | DEBT | CAPITAL | TOTAL |
|-----------|----|---|----------|----------|----------|---------|---------|--------|
| FT | PT | T | SERVICE | | SERVICES | SERVICE | OUTLAY | |
| 0 | 0 | 0 | 0 | 600 | 53,000 | 0 | 0 | 53,600 |

BPAB010R
09/06/96
165627

MUNICIPALITY OF ANCHORAGE
1997 DEPARTMENT RANKING

DEPT: 24 -POLICE
DEPT BUDGET UNIT/
RANK PROGRAM

SL SVC
CODE LVL

103 4630-TRAFFIC ENFORCEMENT UNIT CO 5 To conduct Community Service Officer
0300-Patrol Division OF program. Plan and organize abandoned
SOURCE OF FUNDS, THIS SVC LEVEL: 8 junk & "over 24 hour" vehicle parking
TAX SUPPORT enforcement; assign non-emergency
field tasks relating to lost, stolen or
found property; assist traffic control,
preparing suspect photo lineups;
shuttling police vehicles for repair;
and assisting other sections in need of
temporary duty personnel. (1 CS0)

| PERSONNEL | | | PERSONAL | SUPPLIES | OTHER | DEBT | CAPITAL | TOTAL |
|-----------|----|---|----------|----------|----------|---------|---------|--------|
| FT | PT | T | SERVICE | | SERVICES | SERVICE | OUTLAY | |
| 1 | 0 | 0 | 60,100 | 0 | 310 | 0 | 0 | 60,410 |

104 4620-PATROL OPERATIONS CO 5 To respond to additional criminal
0300-Patrol Division OF situations involving drug related
SOURCE OF FUNDS, THIS SVC LEVEL: 8 street crimes that occur in a
TAX SUPPORT neighborhood setting. (8 Officers)

| PERSONNEL | | | PERSONAL | SUPPLIES | OTHER | DEBT | CAPITAL | TOTAL |
|-----------|----|---|----------|----------|----------|---------|---------|---------|
| FT | PT | T | SERVICE | | SERVICES | SERVICE | OUTLAY | |
| 8 | 0 | 0 | 645,770 | 0 | 12,310 | 0 | 0 | 658,080 |

105 4330-POLICE TRAINING CO 5 Develop, evaluate, and implement new
0298-Staff Services OF operational policies and procedures for
SOURCE OF FUNDS, THIS SVC LEVEL: 6 the Department. Plan, organize, and
TAX SUPPORT coordinate delivery of training for
employee career advancement. (1 Lt)

| PERSONNEL | | | PERSONAL | SUPPLIES | OTHER | DEBT | CAPITAL | TOTAL |
|-----------|----|---|----------|----------|----------|---------|---------|---------|
| FT | PT | T | SERVICE | | SERVICES | SERVICE | OUTLAY | |
| 1 | 0 | 0 | 119,220 | 0 | 0 | 0 | 0 | 119,220 |

BPAB010R
 09/06/96
 165627

M U N I C I P A L I T Y O F A N C H O R A G E
 1997 DEPARTMENT RANKING

DEPT: 24 -POLICE
 DEPT BUDGET UNIT/
 RANK PROGRAM

SL SVC
 CODE LVL

106 4940-PROPERTY & EVIDENCE
 0446-Technical Services
 SOURCE OF FUNDS, THIS SVC LEVEL:
 TAX SUPPORT

CO 5 To supervise the Techs and Clerks. Will
 OF oversee destruction timetables and
 6 compliance with Municipal, state and
 federal law. Conduct weekly and monthly
 random checks to assure all procedures
 are being followed. (1 Sup)

| PERSONNEL | | | PERSONAL | SUPPLIES | OTHER | DEBT | CAPITAL | TOTAL |
|-----------|----|---|----------|----------|-------|------|---------|--------|
| FT | PT | T | SERVICE | | | | | |
| 1 | 0 | 0 | 69,430 | 0 | 0 | 0 | 0 | 69,430 |

107 4960-RESOURCE MANAGEMENT
 0446-Technical Services
 SOURCE OF FUNDS, THIS SVC LEVEL:
 TAX SUPPORT

CO 4 Provide special equipment and uniforms
 OF for police special teams including CIR
 5 body armor, bomb team accessories,
 night vision equipment, special
 non-standard clothing and uniforms.

| PERSONNEL | | | PERSONAL | SUPPLIES | OTHER | DEBT | CAPITAL | TOTAL |
|-----------|----|---|----------|----------|-------|------|---------|-------|
| FT | PT | T | SERVICE | | | | | |
| 0 | 0 | 0 | 0 | 5,000 | 0 | 0 | 0 | 5,000 |

108 4110-POLICE ADMINISTRATION
 0296-Police Administration
 SOURCE OF FUNDS, THIS SVC LEVEL:
 TAX SUPPORT

CO 5 Purchase and administration of Hepatiti
 OF B vaccine for high risk APD personnel
 5

| PERSONNEL | | | PERSONAL | SUPPLIES | OTHER | DEBT | CAPITAL | TOTAL |
|-----------|----|---|----------|----------|-------|------|---------|--------|
| FT | PT | T | SERVICE | | | | | |
| 0 | 0 | 0 | 0 | 18,000 | 0 | 0 | 0 | 18,000 |

109 4950-POLICE INFO SYSTEMS
 0446-Technical Services
 SOURCE OF FUNDS, THIS SVC LEVEL:
 TAX SUPPORT

CO 6 Enhance supervision and provide training
 OF of Dispatch personnel. Respond to
 9 Prosecutor's and officers' requests for
 copies of 911 tapes. (1 Clk III)

| PERSONNEL | | | PERSONAL | SUPPLIES | OTHER | DEBT | CAPITAL | TOTAL |
|-----------|----|---|----------|----------|-------|------|---------|--------|
| FT | PT | T | SERVICE | | | | | |
| 1 | 0 | 0 | 72,140 | 0 | 0 | 0 | 0 | 72,140 |

BPAB010R
 09/06/96
 165627

MUNICIPALITY OF ANCHORAGE
 1997 DEPARTMENT RANKING

DEPT: 24 -POLICE
 DEPT BUDGET UNIT/
 RANK PROGRAM

SL SVC
 CODE LVL

110 4920-POLICE RECORDS CO 6 To transcribe and type police reports
 0446-Technical Services OF and reduce the typing backlog.
 SOURCE OF FUNDS, THIS SVC LEVEL: 10 (1 Clk)
 TAX SUPPORT

| PERSONNEL | | | PERSONAL | SUPPLIES | OTHER | DEBT | CAPITAL | TOTAL |
|-----------|----|---|----------|----------|-------|------|---------|--------|
| FT | PT | T | SERVICE | | | | | |
| 1 | 0 | 0 | 52,610 | 0 | 0 | 0 | 0 | 52,610 |

111 4730-PROPERTY CRIMES CO 5 This level would allow investigation
 0301-Detective Services OF of 10% of assignable property crime
 SOURCE OF FUNDS, THIS SVC LEVEL: 7 cases. (2 Det)
 TAX SUPPORT

| PERSONNEL | | | PERSONAL | SUPPLIES | OTHER | DEBT | CAPITAL | TOTAL |
|-----------|----|---|----------|----------|-------|------|---------|---------|
| FT | PT | T | SERVICE | | | | | |
| 2 | 0 | 0 | 168,440 | 0 | 1,000 | 0 | 0 | 169,440 |

112 4640-WARRANTS CO 6 To serve outstanding criminal and
 0300-Patrol Division OF serious traffic warrants for arrests.
 SOURCE OF FUNDS, THIS SVC LEVEL: 6 (1 Off)
 TAX SUPPORT

| PERSONNEL | | | PERSONAL | SUPPLIES | OTHER | DEBT | CAPITAL | TOTAL |
|-----------|----|---|----------|----------|-------|------|---------|--------|
| FT | PT | T | SERVICE | | | | | |
| 1 | 0 | 0 | 73,660 | 0 | 0 | 0 | 0 | 73,660 |

BPAB010R
 09/06/96
 165627

M U N I C I P A L I T Y O F A N C H O R A G E
 1997 DEPARTMENT RANKING

DEPT: 24 -POLICE

DEPT BUDGET UNIT/ SL SVC
 RANK PROGRAM CODE LVL

113 4630-TRAFFIC ENFORCEMENT UNIT CO 6 To conduct Community Service Officer
 0300-Patrol Division OF program. Plan and organize abandoned
 SOURCE OF FUNDS, THIS SVC LEVEL: 8 junk, and "over 24 hour" vehicle parking
 TAX SUPPORT enforcement. Assign non-emergency field
 tasks relating to lost, stolen or found
 property. Assist traffic control,
 preparing suspect photo lineups,
 shuttling police vehicles for repair,
 and assisting other sections in need of
 temporary duty personnel. (1 CSO)

| PERSONNEL | | | PERSONAL | SUPPLIES | OTHER | DEBT | CAPITAL | TOTAL |
|-----------|----|---|----------|----------|----------|---------|---------|--------|
| FT | PT | T | SERVICE | | SERVICES | SERVICE | OUTLAY | |
| 1 | 0 | 0 | 65,450 | 0 | 310 | 0 | 0 | 65,760 |

114 4730-PROPERTY CRIMES CO 6 Provide administrative services for the
 0301-Detective Services OF Department Detective personnel.
 SOURCE OF FUNDS, THIS SVC LEVEL: 7 (1 NCIC Clerk)
 TAX SUPPORT

| PERSONNEL | | | PERSONAL | SUPPLIES | OTHER | DEBT | CAPITAL | TOTAL |
|-----------|----|---|----------|----------|----------|---------|---------|--------|
| FT | PT | T | SERVICE | | SERVICES | SERVICE | OUTLAY | |
| 1 | 0 | 0 | 46,680 | 0 | 0 | 0 | 0 | 46,680 |

115 4720-PERSON CRIMES CO 6 This level provides additional staff
 0301-Detective Services OF resources to conduct criminal
 SOURCE OF FUNDS, THIS SVC LEVEL: 7 investigations of felony crime
 TAX SUPPORT and allow for the investigation of
 an additional 9% of assignable cases.
 (1 Det)

| PERSONNEL | | | PERSONAL | SUPPLIES | OTHER | DEBT | CAPITAL | TOTAL |
|-----------|----|---|----------|----------|----------|---------|---------|--------|
| FT | PT | T | SERVICE | | SERVICES | SERVICE | OUTLAY | |
| 1 | 0 | 0 | 85,140 | 0 | 500 | 0 | 0 | 85,640 |

BPAB010R
09/06/96
165627

M U N I C I P A L I T Y O F A N C H O R A G E
1997 DEPARTMENT RANKING

DEPT: 24 -POLICE

DEPT BUDGET UNIT/
RANK PROGRAM

SL SVC
CODE LVL

116 4980-FISCAL MANAGEMENT CO 6 Police retiree medical insurance for
0446-Technical Services OF retired and active police officers.
SOURCE OF FUNDS, THIS SVC LEVEL: 8
TAX SUPPORT

| PERSONNEL | | | PERSONAL | SUPPLIES | OTHER | DEBT | CAPITAL | TOTAL |
|-----------|----|---|----------|----------|-----------|---------|---------|-----------|
| FT | PT | T | SERVICE | | SERVICES | SERVICE | OUTLAY | |
| 0 | 0 | 0 | 0 | 0 | 2,159,290 | 0 | 0 | 2,159,290 |

117 4740-NARCOTICS ENFORCEMENT CO 6 Funding previously provided by State
0301-Detective Services OF Troopers and from drug asset forfeitures
SOURCE OF FUNDS, THIS SVC LEVEL: 6 is required to fund undercover drug
TAX SUPPORT operations and provide storage for
under-cover vehicles and equipment.
Funding this level is expected to
account for approximately 50% of all
drug enforcement and vice control
productivity for the department.

| PERSONNEL | | | PERSONAL | SUPPLIES | OTHER | DEBT | CAPITAL | TOTAL |
|-----------|----|---|----------|----------|----------|---------|---------|---------|
| FT | PT | T | SERVICE | | SERVICES | SERVICE | OUTLAY | |
| 0 | 0 | 0 | 0 | 0 | 125,600 | 0 | 0 | 125,600 |

118 4920-POLICE RECORDS CO 7 To transcribe and type police reports
0446-Technical Services OF and reduce the current typing backlog
SOURCE OF FUNDS, THIS SVC LEVEL: 10 of tapes. Investigators cannot work on
TAX SUPPORT cases until the tapes are transcribed
and forwarded to the investigating
units. Tapes and reports must be
completed and available for prosecutors
and the courts within 1 to 10 days
from date of arrest. Perform background
checks for "Brady Bill." (2 Clks)

| PERSONNEL | | | PERSONAL | SUPPLIES | OTHER | DEBT | CAPITAL | TOTAL |
|-----------|----|---|----------|----------|----------|---------|---------|---------|
| FT | PT | T | SERVICE | | SERVICES | SERVICE | OUTLAY | |
| 2 | 0 | 0 | 103,670 | 0 | 0 | 0 | 0 | 103,670 |

BPAB010R
09/06/96
165627

M U N I C I P A L I T Y O F A N C H O R A G E
1997 DEPARTMENT RANKING

DEPT: 24 -POLICE

DEPT BUDGET UNIT/
RANK PROGRAM

SL SVC
CODE LVL

119 4950-POLICE INFO SYSTEMS CO 7 Repair and maintenance of the E-911
0446-Technical Services OF Emergency Communications System.
SOURCE OF FUNDS, THIS SVC LEVEL: 9
TAX SUPPORT

| PERSONNEL | | | PERSONAL | SUPPLIES | OTHER | DEBT | CAPITAL | TOTAL |
|-----------|----|---|----------|----------|----------|---------|---------|--------|
| FT | PT | T | SERVICE | | SERVICES | SERVICE | OUTLAY | |
| 0 | 0 | 0 | 0 | 0 | 85,760 | 0 | 0 | 85,760 |

120 4630-TRAFFIC ENFORCEMENT UNIT CO 7 Traffic Officer for enforcement of the
0300-Patrol Division OF DWI ordinance and other law enforcement
SOURCE OF FUNDS, THIS SVC LEVEL: 8 activities directed at those offenses
TAX SUPPORT which have been identified as causing
accidents. (1 Off)

| PERSONNEL | | | PERSONAL | SUPPLIES | OTHER | DEBT | CAPITAL | TOTAL |
|-----------|----|---|----------|----------|----------|---------|---------|--------|
| FT | PT | T | SERVICE | | SERVICES | SERVICE | OUTLAY | |
| 1 | 0 | 0 | 79,030 | 0 | 310 | 0 | 0 | 79,340 |

121 4620-PATROL OPERATIONS CO 6 To provide the Patrol section with
0300-Patrol Division OF adequate supplies and equipment to
SOURCE OF FUNDS, THIS SVC LEVEL: 8 protect persons and property in the
TAX SUPPORT Anchorage Police Service Area. This
represents supplies for the Police
Reserves, Crises Resolution unit, the
Critical Incident Response Team, and
the Explosive Ordinance Disposal unit.

| PERSONNEL | | | PERSONAL | SUPPLIES | OTHER | DEBT | CAPITAL | TOTAL |
|-----------|----|---|----------|----------|----------|---------|---------|--------|
| FT | PT | T | SERVICE | | SERVICES | SERVICE | OUTLAY | |
| 0 | 0 | 0 | 0 | 37,890 | 0 | 0 | 22,000 | 59,890 |

122 4920-POLICE RECORDS CO 8 To transcribe and type police reports &
0446-Technical Services OF to reduce the typing backlog.
SOURCE OF FUNDS, THIS SVC LEVEL: 10 (1 Clk)
TAX SUPPORT

BPAB010R
09/06/96
165627

MUNICIPALITY OF ANCHORAGE
1997 DEPARTMENT RANKING

DEPT: 24 -POLICE
DEPT BUDGET UNIT/
RANK PROGRAM

SL SVC
CODE LVL

| PERSONNEL | | | PERSONAL | | OTHER | DEBT | CAPITAL | |
|-----------|----|---|----------|----------|----------|---------|---------|--------|
| FT | PT | T | SERVICE | SUPPLIES | SERVICES | SERVICE | OUTLAY | TOTAL |
| 1 | 0 | 0 | 49,670 | 0 | 0 | 0 | 0 | 49,670 |

123 4630-TRAFFIC ENFORCEMENT UNIT CO 8 To reduce the total number of traffic
0300-Patrol Division OF accidents, especially alcohol related,
SOURCE OF FUNDS, THIS SVC LEVEL: 8 with injury and fatal accidents through
TAX SUPPORT enforcement of traffic laws for DWI and
other hazardous moving violations.
(4 Officers)

| PERSONNEL | | | PERSONAL | | OTHER | DEBT | CAPITAL | |
|-----------|----|---|----------|----------|----------|---------|---------|---------|
| FT | PT | T | SERVICE | SUPPLIES | SERVICES | SERVICE | OUTLAY | TOTAL |
| 4 | 0 | 0 | 267,180 | 0 | 0 | 0 | 0 | 267,180 |

124 4920-POLICE RECORDS CO 9 To enter data from police reports in the
0446-Technical Services OF PLIMS computer and reduce typing
SOURCE OF FUNDS, THIS SVC LEVEL: 10 backlog. (2 Clks)
TAX SUPPORT

| PERSONNEL | | | PERSONAL | | OTHER | DEBT | CAPITAL | |
|-----------|----|---|----------|----------|----------|---------|---------|--------|
| FT | PT | T | SERVICE | SUPPLIES | SERVICES | SERVICE | OUTLAY | TOTAL |
| 2 | 0 | 0 | 98,690 | 0 | 0 | 0 | 0 | 98,690 |

125 4340-PUBLIC RELATIONS CO 3 To educate and inform the public about
0298-Staff Services OF preventing crimes or falling victim to
SOURCE OF FUNDS, THIS SVC LEVEL: 4 crimes, how to report crimes to the
TAX SUPPORT police, and to inform the news media on
public safety matters. Programs include:
Crime Stoppers, Neighborhood Watch, Drug
Abuse, Safety Programs, Public Service
Announcements. (1 Cr Prev Spec)

| PERSONNEL | | | PERSONAL | | OTHER | DEBT | CAPITAL | |
|-----------|----|---|----------|----------|----------|---------|---------|--------|
| FT | PT | T | SERVICE | SUPPLIES | SERVICES | SERVICE | OUTLAY | TOTAL |
| 1 | 0 | 0 | 65,670 | 410 | 0 | 0 | 0 | 66,080 |

BPAB010R
 09/06/96
 165627

M U N I C I P A L I T Y O F A N C H O R A G E
 1997 DEPARTMENT RANKING

DEPT: 24 -POLICE

DEPT BUDGET UNIT/ SL SVC
 RANK PROGRAM CODE LVL

126 4930-POLICE INFO/CRIME ANAL CO 4 Provides ad hoc requests support for
 0446-Technical Services OF various requests for police informatio
 SOURCE OF FUNDS, THIS SVC LEVEL: 5 User support & assistance on Microsoft
 TAX SUPPORT Provides PLIMS network, and Excel and
 Word support. New application
 development and training.

| PERSONNEL | | | PERSONAL | SUPPLIES | OTHER | DEBT | CAPITAL | TOTAL |
|-----------|----|---|----------|----------|----------|---------|---------|--------|
| FT | PT | T | SERVICE | | SERVICES | SERVICE | OUTLAY | |
| 1 | 0 | 0 | 53,970 | 0 | 0 | 0 | 0 | 53,970 |

127 4650-Misdemeanor Follow-Up CO 1 The Misdemeanor Follow-up Unit investi-
 0300-Patrol Division OF gates thefts, assaults and other mis-
 SOURCE OF FUNDS, THIS SVC LEVEL: 1 demeanor crimes.
 TAX SUPPORT

| PERSONNEL | | | PERSONAL | SUPPLIES | OTHER | DEBT | CAPITAL | TOTAL |
|-----------|----|---|----------|----------|----------|---------|---------|---------|
| FT | PT | T | SERVICE | | SERVICES | SERVICE | OUTLAY | |
| 7 | 0 | 0 | 455,210 | 500 | 0 | 0 | 24,000 | 479,710 |

128 4760-Juvenile Crime Unit CO 1 Work with kids, parents and schools in
 0301-Detective Services OF preventing kids from engaging in
 SOURCE OF FUNDS, THIS SVC LEVEL: 1 unlawful behavior. A team of
 TAX SUPPORT investigators familiar with kids and th
 juvenile justice system will ensure
 that there is accountability for their
 actions.

| PERSONNEL | | | PERSONAL | SUPPLIES | OTHER | DEBT | CAPITAL | TOTAL |
|-----------|----|---|----------|----------|----------|---------|---------|---------|
| FT | PT | T | SERVICE | | SERVICES | SERVICE | OUTLAY | |
| 7 | 0 | 0 | 471,420 | 1,000 | 2,500 | 0 | 0 | 474,920 |

BPAB010R
09/06/96
165627

M U N I C I P A L I T Y O F A N C H O R A G E
1997 DEPARTMENT RANKING

DEPT: 24 -POLICE

DEPT BUDGET UNIT/
RANK PROGRAM

SL SVC
CODE LVL

129 4620-PATROL OPERATIONS CO 8 Eight officers would be utilized to
0300-Patrol Division OF augment bicycle, foot, and park patrol.
SOURCE OF FUNDS, THIS SVC LEVEL: 8 In addition, they would be utilized
TAX SUPPORT wherever needed to reduce response
times and increase service.
(8 Off)

| PERSONNEL | | | PERSONAL | SUPPLIES | OTHER | DEBT | CAPITAL | TOTAL |
|-----------|----|---|----------|----------|----------|---------|---------|---------|
| FT | PT | T | SERVICE | | SERVICES | SERVICE | OUTLAY | |
| 8 | 0 | 0 | 525,570 | 0 | 0 | 0 | 0 | 525,570 |

130 4980-FISCAL MANAGEMENT CO 8 Principal and interest on G.O. Bonds
0446-Technical Services OF approved by the voters.
SOURCE OF FUNDS, THIS SVC LEVEL: 8
TAX SUPPORT

| PERSONNEL | | | PERSONAL | SUPPLIES | OTHER | DEBT | CAPITAL | TOTAL |
|-----------|----|---|----------|----------|----------|---------|---------|--------|
| FT | PT | T | SERVICE | | SERVICES | SERVICE | OUTLAY | |
| 0 | 0 | 0 | 0 | 0 | 0 | 26,940 | 0 | 26,940 |

131 4940-PROPERTY & EVIDENCE ND 6 Property and Evidence room supplies and
0446-Technical Services OF costs of public notification of
SOURCE OF FUNDS, THIS SVC LEVEL: 6 property to be disposed to allow
TAX SUPPORT compliance with new policy and
procedure.

| PERSONNEL | | | PERSONAL | SUPPLIES | OTHER | DEBT | CAPITAL | TOTAL |
|-----------|----|---|----------|----------|----------|---------|---------|--------|
| FT | PT | T | SERVICE | | SERVICES | SERVICE | OUTLAY | |
| 0 | 0 | 0 | 0 | 8,820 | 16,000 | 0 | 0 | 24,820 |

132 4950-POLICE INFO SYSTEMS ND 9 Digital 911 recording review station.
0446-Technical Services OF This remote digital listening station
SOURCE OF FUNDS, THIS SVC LEVEL: 9 would make information available direct-
TAX SUPPORT ly to some of the requesting agencies,
would eliminate overtime research
details, and would stop the necessity of
copying material which the requestor
later deems to be of no value.

| PERSONNEL | | | PERSONAL | SUPPLIES | OTHER | DEBT | CAPITAL | TOTAL |
|-----------|----|---|----------|----------|----------|---------|---------|--------|
| FT | PT | T | SERVICE | | SERVICES | SERVICE | OUTLAY | |
| 0 | 0 | 0 | 0 | 0 | 0 | 0 | 22,000 | 22,000 |

BPAB010R
 09/06/96
 165627

M U N I C I P A L I T Y O F A N C H O R A G E
 1997 DEPARTMENT RANKING

DEPT: 24 -POLICE

| | | | |
|------|--------------|------|-----|
| DEPT | BUDGET UNIT/ | SL | SVC |
| RANK | PROGRAM | CODE | LVL |

SUBTOTAL OF FUNDED SERVICE LEVELS, POLICE

| PERSONNEL | | | PERSONAL | | OTHER | DEBT | CAPITAL | |
|-----------|----|---|------------|----------|-----------|-----------|---------|------------|
| FT | PT | T | SERVICE | SUPPLIES | SERVICES | SERVICE | OUTLAY | TOTAL |
| 504 | 0 | 0 | 36,206,200 | 787,770 | 6,106,120 | 1,266,500 | 361,360 | 44,727,950 |

----- DEPARTMENT OF POLICE FUNDING LINE -----
 44,727,950

TOTALS FOR DEPARTMENT OF POLICE , FUNDED AND UNFUNDED

| PERSONNEL | | | PERSONAL | | OTHER | DEBT | CAPITAL | |
|-----------|----|---|------------|----------|-----------|-----------|---------|------------|
| FT | PT | T | SERVICE | SUPPLIES | SERVICES | SERVICE | OUTLAY | TOTAL |
| 504 | 0 | 0 | 36,206,200 | 787,770 | 6,106,120 | 1,266,500 | 361,360 | 44,727,950 |