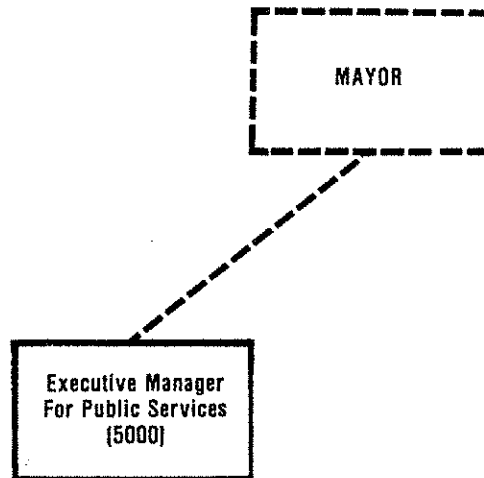


# ORGANIZATION CHART EXECUTIVE MANAGER FOR PUBLIC SERVICES



EXECUTIVE MANAGER FOR PUBLIC SERVICES

The Executive Manager for Public Services is responsible for the overall coordination and supervision of the following departments and agencies which provide public services to the residents of the Municipality of Anchorage:

- o Library
- o Museum
- o Department of Parks and Recreation
- o Department of Public Works
- o Department of Social Services
- o Department of Public Transit

## DEPARTMENT

## Office of Public Services

| ACCOUNT<br>NUMBER | DIVISIONS/SECTIONS             | 1981    | 1982    | 1983     |         |
|-------------------|--------------------------------|---------|---------|----------|---------|
|                   |                                | ACTUAL  | REVISED | PROPOSED | ADOPTED |
| 5000              | Office of Public Services      | 120,370 | 194,740 | 229,160  | 226,190 |
|                   | Direct Organizational Cost     | 120,370 | 194,740 | 229,160  | 226,190 |
|                   | Add Intragovernmental Charges  | 27,210  | 31,780  | 34,350   | 43,820  |
|                   | Total Department Cost          | 147,580 | 226,520 | 263,510  | 270,010 |
|                   | Less Intragovernmental Charges | 147,580 | 90,190  | 263,510  | 270,010 |
|                   | Function Cost                  | -0-     | 136,330 | -0-      | -0-     |
|                   | Less Operational Revenues      | -0-     | -0-     | -0-      | -0-     |
|                   | Net Program Cost               | -0-     | 136,330 | -0-      | -0-     |

|  |                  |                 |                |          |                 |
|--|------------------|-----------------|----------------|----------|-----------------|
| Dept.<br>Office of<br>Public Services    | Unit No.<br>5000 | Div.            | Unit No.       | Section  | Unit No.<br>489 |
| FINANCIAL RESOURCES                      |                  | 1981            | 1982           | 1983     |                 |
|  |                  | ACTUAL          | REVISED        | PROPOSED | ADOPTED         |
| EXPENDITURES:                            |                  |                 |                |          |                 |
| Personal Services                        |                  | 115,290         | 170,260        | 211,180  | 208,210         |
| Supplies                                 |                  | 630             | 2,200          | 2,200    | 2,200           |
| Other Services & Charges                 |                  | 4,250           | 21,990         | 15,100   | 15,100          |
| Debt Service                             |                  | -0-             | -0-            | -0-      | -0-             |
| Capital Outlay                           |                  | 200             | 290            | 680      | 680             |
| DIRECT ORGANIZATIONAL COST               |                  | 120,370         | 194,740        | 229,160  | 226,190         |
| Intragovernmentals from Others           |                  | 27,210          | 31,780         | 34,350   | 43,820          |
| BUDGET UNIT COST                         |                  | 147,580         | 226,520        | 263,510  | 270,010         |
| Intragovernmentals to Others             |                  | 147,580         | 90,190         | 263,510  | 270,010         |
| FUNCTION COST                            |                  | -0-             | 136,330        | -0-      | -0-             |
| LESS OPERATIONAL REVENUES:               |                  |                 |                |          |                 |
| Licenses and Permits                     |                  | -0-             | -0-            | -0-      | -0-             |
| Fines and Forfeitures                    |                  | -0-             | -0-            | -0-      | -0-             |
| Charges for Service                      |                  | -0-             | -0-            | -0-      | -0-             |
| Other Operational Revenues               |                  | -0-             | -0-            | -0-      | -0-             |
| TOTAL OPERATIONAL REVENUES               |                  | -0-             | -0-            | -0-      | -0-             |
| NET PROGRAM COST                         |                  | -0-             | 136,330        | -0-      | -0-             |
| PERSONNEL RESOURCES                      |                  | RANGE &<br>STEP | 1982<br>BUDGET | 1983     |                 |
|  |                  |                 |                | PROPOSED | ADOPTED         |
| Executive Manager for<br>Public Services |                  | 23E             | 1              | 1        | 1               |
| Executive Assistant                      |                  | 21E             | 1              | 1        | 1               |
| Principal Office Associate               |                  | 12N F           | 1              | 1        | 1               |
| TOTAL                                    |                  |                 | 3              | 3        | 3               |