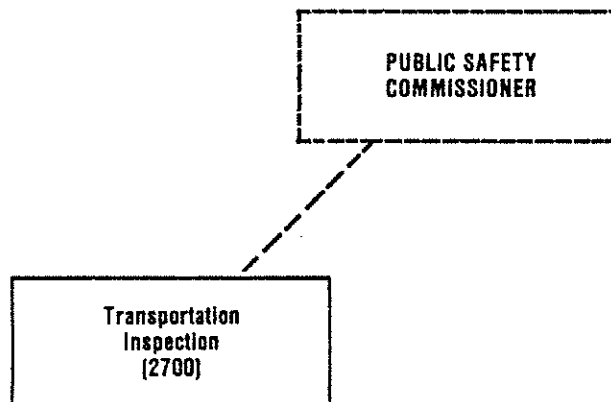


ORGANIZATION CHART TRANSPORTATION INSPECTION AGENCY



Department		MAJOR OBJECTIVES FOR 1982	MAJOR OBJECTIVES FOR 1983	MAJOR PROGRAM CHANGES FOR 1983
Transportation Inspection				
CODE	BUDGET UNIT			
2700	Transportation Inspection	<p>-Up-grade vehicle inspection program to insure compliance with Municipal Codes</p> <p>-Improve computer data information system on Taxicab permits and chauffeur records</p>	<p>-To put more emphasis on enforcement of all laws and regulations under Title 11 pertaining to Taxicabs, Limousines, Chauffeurs, Dispatch Companies</p>	<p>-Increase office efficiency and productivity with emphasis on 24 hour enforcement program utilizing an additional investigator for back up support</p>

DEPARTMENT

Transportation Inspection

ACCOUNT NUMBER	DIVISIONS/SECTIONS	1981	1982	1983	
		ACTUAL	REVISED	PROPOSED	ADOPTED
2700	Transportation Inspection	82,450	91,760	149,550	147,010
	Direct Organizational Cost	82,450	91,760	149,550	147,010
	Add Intragovernmental Charges	32,300	40,500	50,670	50,410
	Total Department Cost	114,750	132,260	200,220	197,420
	Less Intragovernmental Charges	8,200	2,400	3,000	3,000
	Function Cost	106,550	129,860	197,220	194,420
	Less Operational Revenues	58,270	62,900	102,000	122,500
	Net Program Cost	48,280	66,960	95,220	71,920

1983 WORK PROGRAM

PAGE 392

DEPT. Transportation Inspection	UNIT NO. 2700	DIV.	UNIT NO.	SEC.	UNIT NO.
---------------------------------------	------------------	------	----------	------	----------

MISSION

To provide effective management and administrative enforcement of all Municipal laws and regulations pertaining to the licensing of Chauffeurs, Taxicabs, Limousines, and Dispatch Companies.

SUMMARY DESCRIPTION OF 1983 LEVEL OF SERVICE

The Transportation Inspector (Agency Manager), and Assistant Investigator will provide management and 24 hour enforcement of all Municipal laws pertaining to the licensing of Taxicabs, Limousines, Chauffeurs and Dispatch Companies. A Senior Office Associate processes, files and maintains all records and issues permits and licenses.

WORKLOAD

- 1,000 chauffeur licenses
- 156 taxicabs and limousines permits
- 2 dispatch companies
- 400 semi-annual inspections
- 400 on street inspections
- 200 change of vehicle inspections
- 380 taximeter inspections
- 300 citations issued court testimony
- 200 public complaints
- 100 law enforcement agency inquiries

WORK ACTIVITIES

- Documents, processes, issues, maintains and monitors all records pertaining to Taxicabs, Limousines, Chauffeurs, and Dispatch Companies
- Enforcement of legal required semi-annual inspections and on street inspections of both vehicles and meters to insure public safety requirements
- Issue 300 citations for various violations under Title 11
- Investigate and respond to 200 public complaints involving taxicabs, limousines, chauffeurs and dispatch companies
- Respond to 100 law enforcement agencies inquires for information

CHANGES FROM CURRENT LEVEL

One additional investigator has been added to increase office efficiency and productivity and put emphasis on a 24 hour enforcement program of all Municipal laws and regulations pertaining to Taxicabs, Limousines, Chauffeurs, and Dispatch Companies.

PERFORMANCE MEASURES FOR THIS LEVEL OF SERVICE

DESCRIPTION	1982 BUDGETED	1983 PLANNED
Chauffeur license issued	1050	1000
Vehicle inspections	400	800
Taximeter inspections	Not Available	380
Citations issued	150	300
Public Complaints investigated	Not Available	200
Law enforcement inquiries answered	Not Available	100

Dept.	Unit No.	Div.	Unit No.	Section	Unit No.
Transportation Inspection	2700				
FINANCIAL RESOURCES		1981	1982	1983	
		ACTUAL	REVISED	PROPOSED	ADOPTED
EXPENDITURES:					
Personal Services		68,150	80,530	135,860	133,910
Supplies		440	1,750	2,870	2,870
Other Services & Charges		12,560	8,900	10,090	9,500
Debt Service		-0-	-0-	-0-	-0-
Capital Outlay		1,300	580	730	730
DIRECT ORGANIZATIONAL COST		82,450	91,760	149,550	147,010
Intragovernmentals from Others		32,300	40,500	50,670	50,410
BUDGET UNIT COST		114,750	132,260	200,220	197,420
Intragovernmentals to Others		8,200	2,400	3,000	3,000
FUNCTION COST		106,550	129,860	197,220	194,420
LESS OPERATIONAL REVENUES:					
Licenses and Permits		58,270	62,900	102,000	120,750
Fines and Forfeitures		-0-	-0-	-0-	-0-
Charges for Service		-0-	-0-	-0-	-0-
Other Operational Revenues		-0-	-0-	-0-	1,750
TOTAL OPERATIONAL REVENUES		58,270	62,900	102,000	122,500
NET PROGRAM COST		48,280	66,960	95,220	71,920
PERSONNEL RESOURCES		RANGE & STEP	1982 BUDGET	1983	
				PROPOSED	ADOPTED
Transportation Inspection Manager		21E	1	1	1
Administrative Officer		14N A-B	-0-	1	1
Senior Office Associate		10 D-E	1	1	1
TOTAL			2	3	3