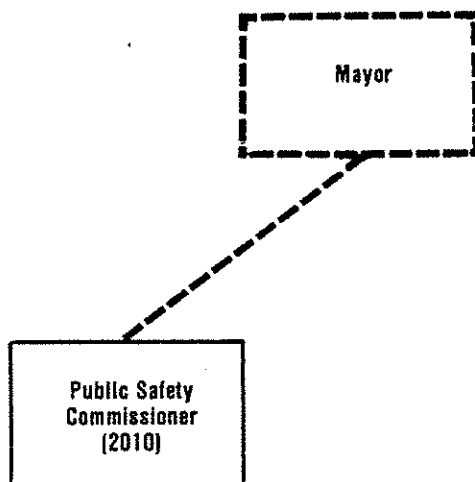


ORGANIZATION CHART PUBLIC SAFETY COMMISSIONER.



EXECUTIVE MANAGER OF PUBLIC SAFETY

The Executive Manager of Public Safety is responsible for the overall supervision of the Public Safety operations of the Municipality, as conducted through the following department and agencies:

- o Transportation Inspection
- o Department of Health and
Environmental Protection
- o Department of Fire
- o Department of Police

The Office of Public Safety also hears and renders decisions on chauffeur license appeals.

DEPARTMENT

Office of Public Safety

ACCOUNT NUMBER	DIVISIONS/SECTIONS	1981	1982	1983	
		ACTUAL	REVISED	PROPOSED	ADOPTED
2010	Office of Public Safety	-0-	115,690	222,650	341,660
	Direct Organizational Cost	-0-	115,690	222,650	341,660
	Add Intragovernmental Charges	-0-	-0-	20,640	50,110
	Total Department Cost	-0-	115,690	243,290	391,770
	Less Intragovernmental Charges	-0-	115,690	243,290	391,770
	Function Cost	-0-	-0-	-0-	-0-
	Less Operational Revenues	-0-	-0-	-0-	-0-
	Net Program Cost	-0-	-0-	-0-	-0-

Dept.	Unit No.	Div.	Unit No.	Section	Unit No.
Office of Public Safety	2010				
FINANCIAL RESOURCES	1981	1982	1983		
	ACTUAL	REVISED	PROPOSED	ADOPTED	
EXPENDITURES:					
Personal Services	New Budget	101,620	187,820	185,140	
Supplies	Unit in	1,200	2,100	2,100	
Other Services & Charges	1982	6,210	8,570	130,260	
Debt Service		-0-	-0-	-0-	
Capital Outlay		6,660	24,160	24,160	
DIRECT ORGANIZATIONAL COST		115,690	222,650	341,660	
Intragovernmentals from Others		-0-	20,640	50,110	
BUDGET UNIT COST		115,690	243,290	391,770	
Intragovernmentals to Others		115,690	243,290	391,770	
FUNCTION COST		-0-	-0-	-0-	
LESS OPERATIONAL REVENUES:					
Licenses and Permits		-0-	-0-	-0-	
Fines and Forfeitures		-0-	-0-	-0-	
Charges for Service		-0-	-0-	-0-	
Other Operational Revenues		-0-	-0-	-0-	
TOTAL OPERATIONAL REVENUES		-0-	-0-	-0-	
NET PROGRAM COST		-0-	-0-	-0-	
PERSONNEL RESOURCES	RANGE & STEP	1982 BUDGET	1983		
			PROPOSED	ADOPTED	
Commissioner of Public Safety	23E	1	1	1	
Executive Assistant	21E	1	1	1	
Principal Office Associate	12N B-C	-0-	1	1	
TOTAL		2	3	3	