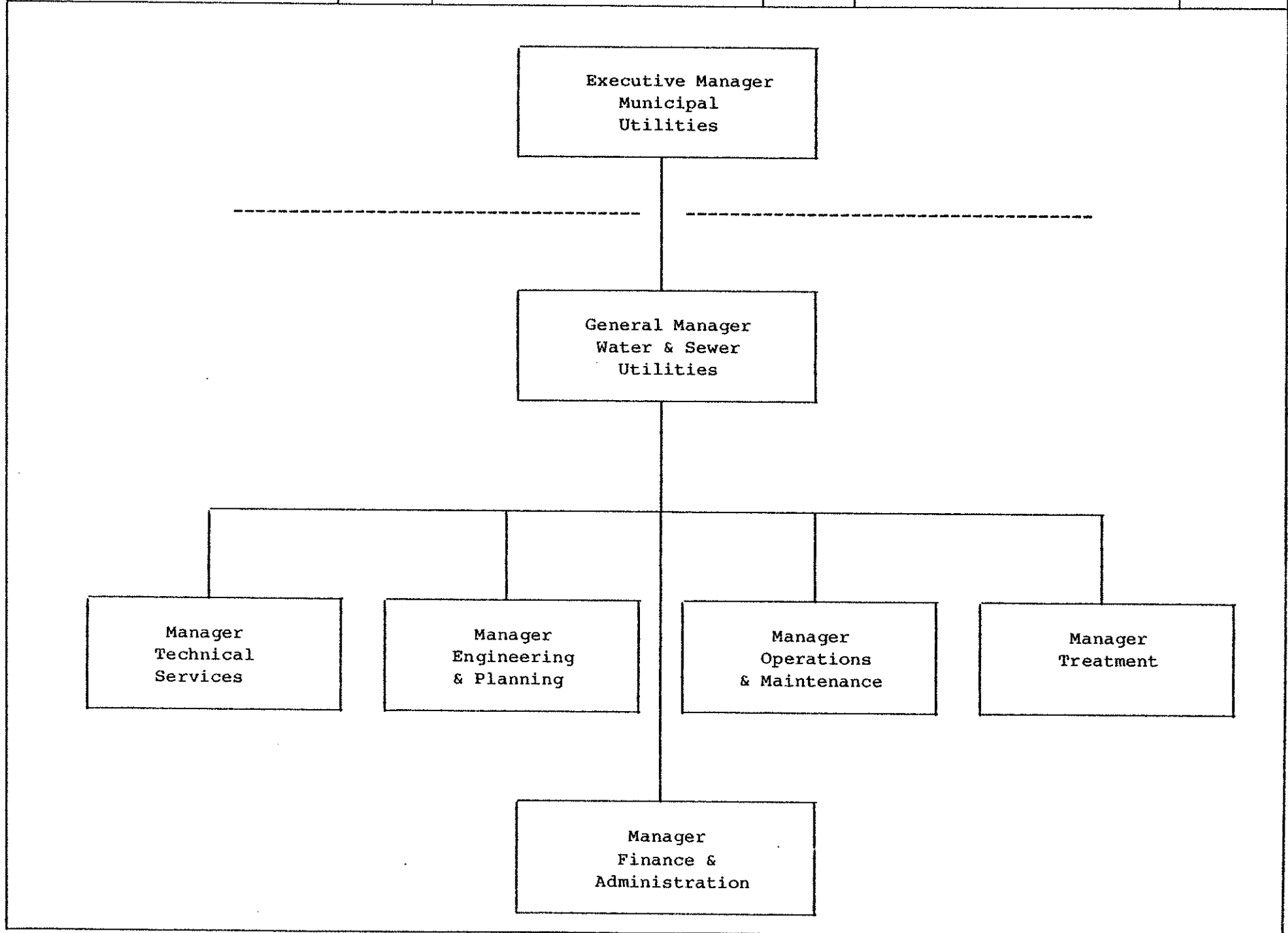


Department	Unit No.	Division	Unit No.	Section	Unit No.
Municipal Utilities		Anchorage Water & Sewer Utilities			



Department	Unit No.	Division	Unit No.	Section	Unit No.
Municipal Utilities		Anchorage Water Utility			

The original water system for Anchorage was installed by the Alaska Railroad in 1917. In 1921, the City purchased the water system and associated water rights from the Alaska Engineering Commission. As the City expanded by annexation, the water system was extended into new areas and independent water systems previously serving the annexed areas were acquired by the City. Since December, 1970, the Anchorage Water Utility has been regulated by the Alaska Public Utilities Commission. The entire service area is now governed by the Municipality of Anchorage as a result of unification of the City of Anchorage and the Greater Anchorage Area Borough on September 15, 1975. At the present time, the Anchorage Water Utility has over 18,000 connections and serves an area of 30 square miles with an approximate population of 118,000.

During 1981 the Water Utility proposes a limited construction program that will emphasize expanding sources of water supply and storage and maximizing accountability and efficiency of the existing system and resources. To accomplish this objective, the Water Utility proposes initiating design of the Water Treatment Plant expansion and the construction of an additional well, treated water storage, and optimum use of existing operational resources and activities by computerized mechanization of routine work functions. With Assembly approval of the Metropolitan Anchorage Urban Study, the Water Utility will also strive for implementation of a Municipal Water Development Agency to coordinate use and development of all Anchorage water resources.

Department	Unit No.	Division	Unit No.	Section	Unit No.
Municipal Utilities		Anchorage Sewer Utility			

Sewers were first installed in Anchorage during 1916 along the lower bluff from the Alaska Railroad Depot, west to the inlet by the Alaska Engineering Commission. As Anchorage grew, construction of sewers continued and, by the end of World War II, sewers were available to most of the area between Ship Creek and Chester Creek to the west of Cordova Street. The Greater Anchorage Area Borough was created in 1964, and soon after was granted area wide sewer powers. The last major private sewer utility was acquired by the GAAB in 1972. Since 1971, the Anchorage Sewer Utility has been regulated by the Alaska Public Utilities Commission and holds a Certificate of Convenience and Necessity for serving the Anchorage Bowl, Eagle River, and Girdwood. The Utility is now governed by the Municipality of Anchorage as a result of unification of the City of Anchorage and the Greater Anchorage Area Borough on September 15, 1975.

The 1981 construction program will emphasize expansion into those areas where development has generated a public need and provide funding to extend public sewers by means of lateral improvement districts to presently developed areas where on-site disposal systems are no longer feasible. Construction of the 78" West Interceptor and Southeast Interceptor will provide downstream capacity for the expansion of the lateral system in the east, northwest, and south sections of the Anchorage Bowl Service Area. Upgrade of the Pt. Woronzof Treatment Plant will enable the Utility to meet the more stringent discharge requirements of the EPA and prevent the imminent overload situation.

Completion of the Eagle River Treatment Plant expansion, and expansion of the Interceptor and Trunk collection system will provide for the normal and planned development of sewers in the Eagle River Service Area.

With the completion of the Girdwood/Alyeska Treatment Plant, Interceptors and collection system, extension of public sewers by means of lateral improvement districts will proceed as requested by property owners in developed areas.

Department	Unit No.	Division	Unit No.	Section	Unit No.	
Municipal Utilities		Anchorage Water & Sewer Utilities				
PERSONNEL RESOURCES		RANGE & STEP	1980 BUDGET	1981		
				REQUESTED	RECOMMENDED	APPROVED
<u>GENERAL MANAGER</u>						
General Manager		E-2	1	1	1	1
Utility Management Assistant		17N	1	1	1	1
Senior Office Associate		10N	2	2	2	2
			4	4	4	4
<u>TECHNICAL SERVICES</u>						
Utility Management Assistant		17N	1	1	1	1
Principal Administrative Officer		16N	1	1	1	1
Engineering Technician IV		16A	2	2	2	2
Senior Administrative Officer		15N	1	1	1	1
Office Associate		9N	1	1	1	1
Senior Office Associate		8A	1	1	1	1
			7	7	7	7
<u>ENGINEERING & PLANNING ADMINISTRATION</u>						
Manager		E-1	1	1	1	1
Office Associate		9A	1	1	1	1
Senior Office Assistant		8A	1	1	1	1
			3	3	3	3
<u>ENGINEERING</u>						
Civil Engineer III		17N	1	1	1	1
Civil Engineer II		16A	3	3	3	3
Engineering Technician IV		16A	2	2	2	2
Engineering Technician III		14A	9	9	9	9
			15	15	15	15

MUNICIPALITY OF ANCHORAGE

COMMENTARY

Department	Unit No.	Division	Unit No.	Section	Unit No.	
Municipal Utilities		Anchorage Water & Sewer Utilities				
PERSONNEL RESOURCES		RANGE & STEP	1980 BUDGET	1981		
				REQUESTED	RECOMMENDED	APPROVED
<u>PLANNING</u>						
Civil Engineer III		17N	2	2	2	2
Engineering Technician IV		16A	1	1	1	1
Administrative Officer		14A	1	1	1	1
Junior Administrative Officer		12A	1	1	1	1
			5	5	5	5
<u>OPERATIONS & MAINTENANCE ADMINISTRATION</u>						
Manager		E-1	1	1	1	1
Office Associate		9A	2	2	2	2
			3	3	3	3
<u>MAINTENANCE</u>						
Superintendent		17N	1	1	1	1
General Foreman		16N	3	3	3	3
Maintenance Foreman		24-JCC	6	6	6	6
Utility Inspector		22-JCC	1	1	1	1
Heavy Equipment Operator Journeyman		21-JCC	2	2	2	2
Warehouseman Journeyman		21-JCC	1	1	1	1
Journeyman Utilityman		21-JCC	27	27	27	27
Utilityman III		20-JCC	7	7	7	7
Utilityman II		15-JCC	3	3	3	3
Assistant Parts Warehouseman		15-JCC	1	1	1	1
Building Superintendent		7-JCC	1	1	1	1
Utilityman III-Part Time		20-JCC	1	1	1	1
Utilityman II -Part Time		15-JCC	1	1	1	1
			55	55	55	55
<u>VEHICLES</u>						
General Foreman		16N	1	1	1	1
Mechanic		21-JCC	2	2	2	2
Expeditor		22-JCC	1	1	1	1
			4	4	4	4

Department	Unit No.	Division	Unit No.	Section	Unit No.
Municipal Utilities		Anchorage Water & Sewer Utilities			
PERSONNEL RESOURCES	RANGE & STEP	1980 BUDGET	1981		
			REQUESTED	RECOMMENDED	APPROVED
<u>CUSTOMER & FIELD SERVICE</u>					
Principal Administrative Officer	16N	1	1	1	1
General Foreman	16N	1	1	1	1
Field Service Foreman	24-JCC	1	1	1	1
Field Service Journeyman	21-JCC	3	3	3	3
Meter Installer Repairman	21-JCC	2	2	2	2
Utilityman III	20-JCC	1	1	1	1
Field Serviceman I	18-JCC	3	3	3	3
Meter Reader	16-JCC	2	2	2	2
Utilityman II	15-JCC	1	1	1	1
Junior Administrative Officer	12A	1	1	1	1
Office Associate	9A	1	1	1	1
Senior Office Assistant	8A	7	7	7	7
		24	24	24	24
<u>TREATMENT ADMINISTRATION</u>					
Manager	E-1	1	1	1	1
Expeditor	22-JCC	1	1	1	1
Warehouseman Journeyman	21-JCC	1	1	1	1
Office Associate	9A	1	1	1	1
Senior Office Assistant	8A	1	1	1	1
		5	5	5	5
<u>WASTEWATER TREATMENT ANCHORAGE</u>					
Superintendent	17N	1	1	1	1
General Foreman	16N	1	1	1	1
Maintenance Foreman	24-JCC	1	1	1	1
Senior Treatment Plant Operator	22-JCC	5	5	5	5
Operator II	21-JCC	10	10	10	10
Operator I	18-JCC	5	5	5	5
		23	23	23	23

Department	Unit No.	Division	Unit No.	Section	Unit No.
Municipal Utilities		Anchorage Water & Sewer Utilities			
PERSONNEL RESOURCES		RANGE & STEP	1980 BUDGET	1981	
				REQUESTED	APPROVED
				RECOMMENDED	
<u>WASTEWATER TREATMENT EAGLE RIVER</u>					
General Foreman		16N	1	1	1
Senior Treatment Plant Operator		22-JCC	2	2	2
Operator II		21-JCC	1	1	1
			4	4	4
<u>WASTEWATER TREATMENT GIRDWOOD</u>					
General Foreman		16N	1	1	1
Senior Treatment Plant Operator		22-JCC	2	2	2
Operator II		21-JCC	1	1	1
			4	4	4
<u>TREATMENT-REPAIR SERVICE & PUMP STATION</u>					
General Foreman		16N	1	1	1
Maintenance Foreman		24-JCC	3	4*	4
Electrician Journeyman		21-JCC	3	3	3
Instrument Technician		21-JCC	1	1	1
Mechanic Machinist		22-JCC	1	1	1
Mechanic Welder		22-JCC	1	1	1
Mechanic Leadman		22-JCC	1	1	1
Mechanic		21-JCC	1	1	1
Journeyman Craftsman		21-JCC	1	1	1
Utilityman II		15-JCC	2	2	2
Equipment Serviceman II		15-JCC	1	1	1
Equipment Serviceman I		14-JCC	1	1	1
Building Superintendent		7-JCC	1	1	1
			18	19	19
* New Position					

Department	Unit No.	Division	Unit No.	Section	Unit No.	
Municipal Utilities		Anchorage Water & Sewer Utilities				
PERSONNEL RESOURCES		RANGE & STEP	1980 BUDGET	1981 REQUESTED	1981 RECOMMENDED	1981 APPROVED
<u>LABORATORY</u>						
Laboratory Analyst Supervisor		14N	1	1	1	1
Laboratory Analyst		12A	1	1	1	1
Water Quality Technician II		11A	2	2	2	2
Laboratory Assistant		9A	1	1	1	1
			5	5	5	5
<u>WATER TREATMENT</u>						
Superintendent		17N	1	1	1	1
General Foreman		16N	1	1	1	1
Senior Treatment Plant Operator		22-JCC	6	6	6	6
Operator II		21-JCC	2	2	2	2
			10	10	10	10
<u>FINANCE & ADMINISTRATION</u>						
<u>ADMINISTRATION</u>						
Manager		E-1	1	1	1	1
Office Associate		9A	1	1	1	1
Senior Office Assistant		8A	1	1	1	1
			3	3	3	3
<u>ACCOUNTING</u>						
Principal Accountant		16N	1	1	1	1
Senior Administrative Officer		15N	1	1	1	1
Senior Administrative Officer		15A	1	1	1	1
Senior Accountant		14N	1	1	1	1
Senior Accountant		14A	1	1	1	1
Senior Office Assistant		8A	1	1	1	1
			6	6	6	6

Department	Unit No.	Division	Unit No.	Section	Unit No.	
Municipal Utilities		Anchorage Water & Sewer Utilities				
PERSONNEL RESOURCES		RANGE & STEP	1980 BUDGET	1981		
				REQUESTED	RECOMMENDED	APPROVED
<u>FINANCIAL PLANNING</u>						
Principal Accountant		16N	1	1	1	1
Senior Administrative Officer		15A	1	1	1	1
			2	2	2	2
<u>MANAGEMENT INFORMATION SYSTEMS</u>						
Manager		16N	1	1	1	1
			1	1	1	1
TOTAL:			201	202	202	202