

Department	Unit No.	Division	Unit No.	Division	Unit No.			
Municipal Utilities	9000	General Administration	9300					
CLASSIFICATION	RANGE & STEP	POSITIONS 1979 BUDGET	1980					
			REQUESTED	RECOMMENDED	APPROVED			
General Manager	E-2	1	1	46,150	1	46,150	1	46,150
Utility Management Assistant (1)	17D-N	0	1	40,710	1	40,710	1	40,710
Principal Administrative Officer (1)	16E-N	1	0	-0-	0	-0-	0	-0-
Junior Administrative Officer	12C-N	1	1	23,960	0	-0-	0	-0-
Senior Office Associate	10F-N	0	0	-0-	1	21,900	1	21,900
Senior Office Associate (2)	10B-N	0	1	15,980	0	-0-	0	-0-
Senior Office Associate (3)	10F-N	0	0	-0-	1	20,970	1	20,970
Office Associate (2)	AMEA	1	0	-0-	1	14,680	1	14,680
Subtotal		4	4	126,800	5	144,410	5	144,410

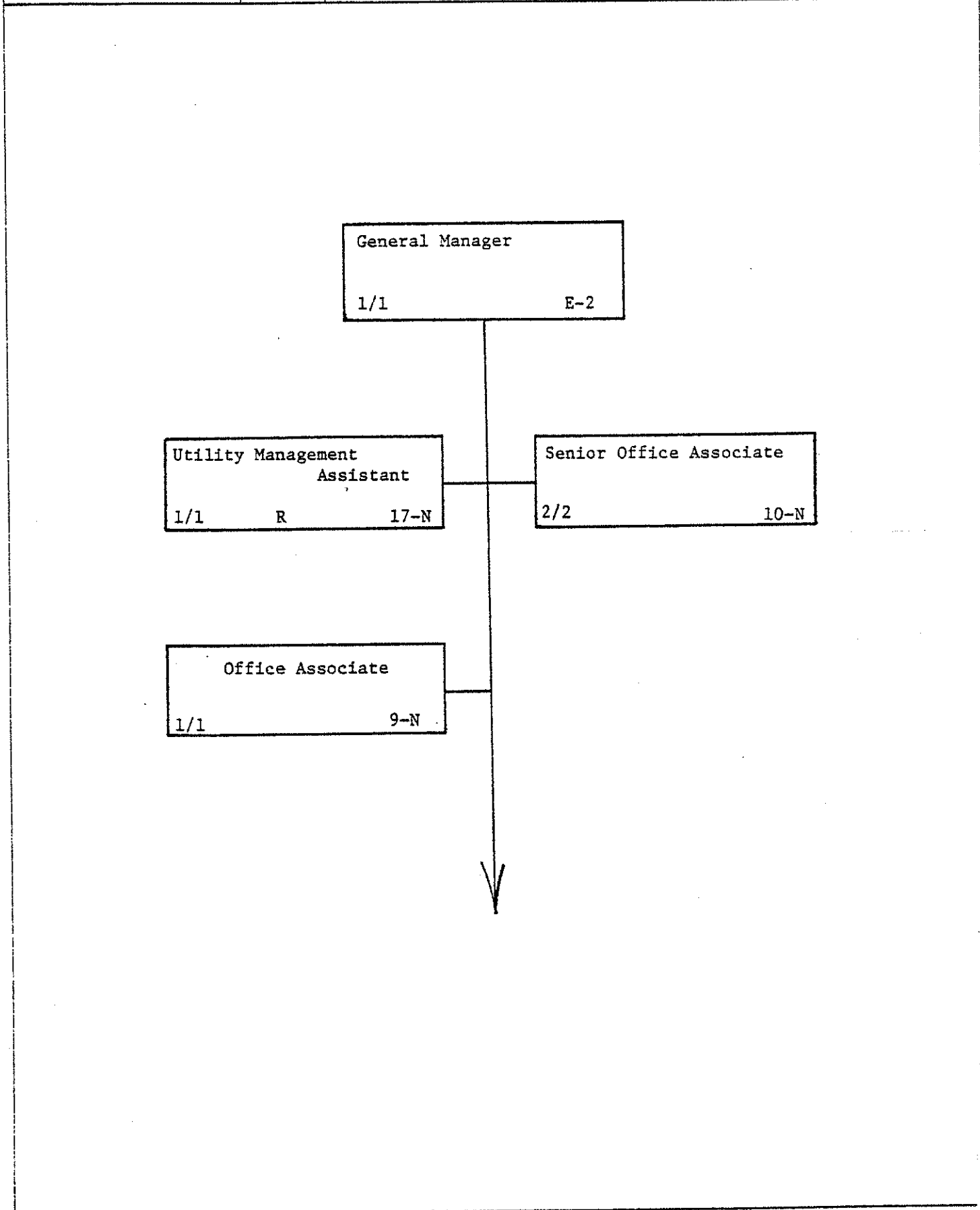
*THESE COLUMNS USED FOR THE NUMBER OF POSITIONS IN EACH CLASSIFICATION.

COMMENTARY:

- (1) Utility Management Assistant reclassified from Principal Administrative Officer.
- (2) Senior Office Associate reclassified from Office Associate.
- (3) Senior Office Associate transferred from Division 9210.

OTHER PERSONAL SERVICES COMMENTARY		Estimated Hours	1980		
ACCT. No.	EXPLANATION		REQUESTED	RECOMMENDED	APPROVED
	Contingency		830	1,640	(890)
	Sub-Total:		127,630	146,050	143,520
	Personnel Benefits		39,380	44,480	43,720
	Other		7,260	4,430	4,430
	Overtime				
	Sub-total:		174,270	194,960	191,670
	Operational Budget	100%	174,270	194,960	191,670
	Capital Improvement Budget				
	Total:	100%	174,270	194,960	191,670

Department	Unit No.	Division	Unit No.	Section	Unit No.
Municipal Utilities	9000	General Manager	9300		



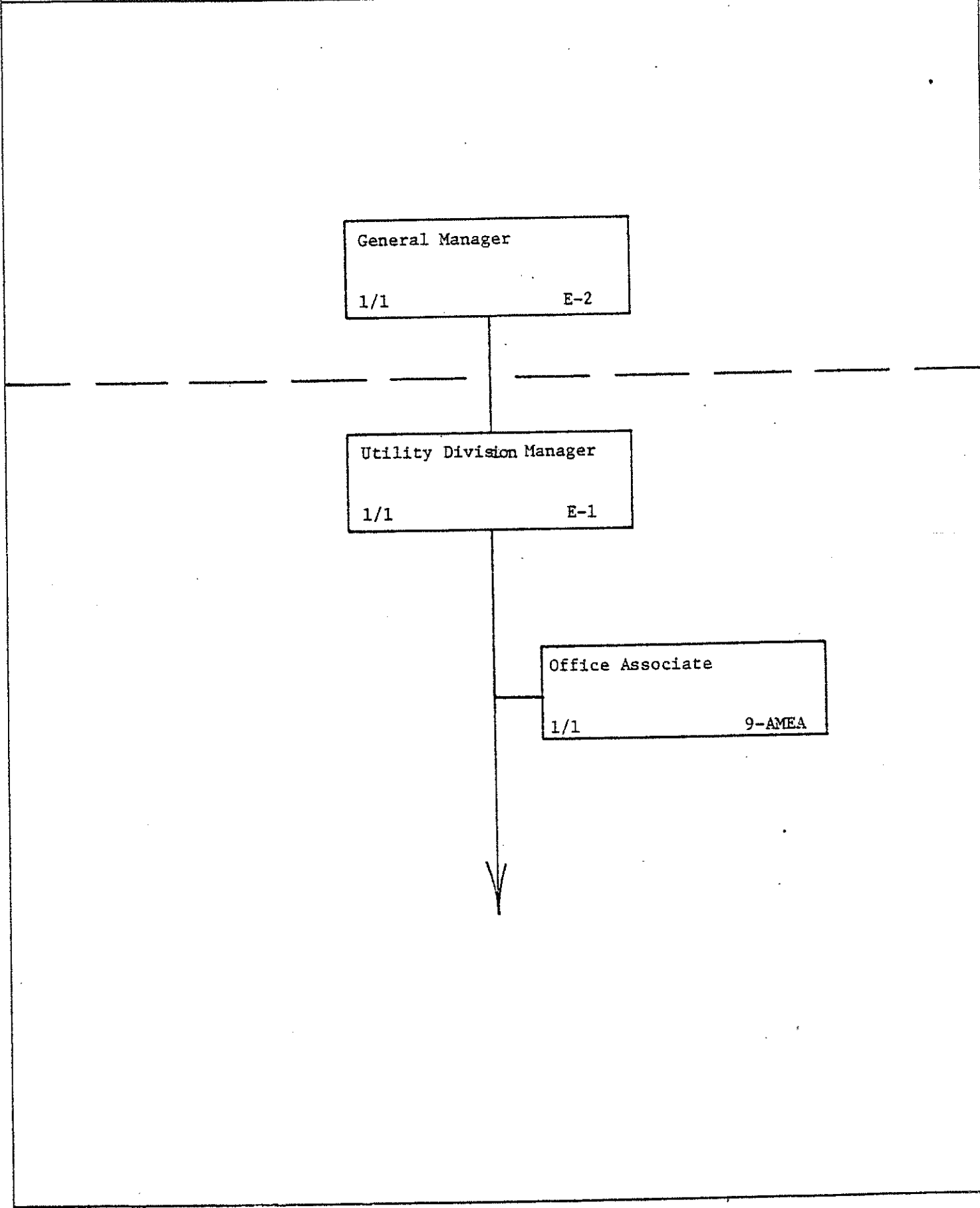
Department	Unit No.	Division	Unit No.	Division	Unit No.	
Municipal Utilities	9000	Finance & Administration	9600	Administration	9610	
CLASSIFICATION	RANGE & STEP	POSITIONS 1979 BUDGET	1980			
			REQUESTED	RECOMMENDED	APPROVED	
Utility Division Manager	E-1	1	1	41,670	1	41,670
Senior Office Associate (2)	10F-N	1	1	20,970	0	-0-
Office Associate	AMEA	1	1	15,810	1	15,810
Engineer Technician III (1)	AMEA	1	0	-0-	0	-0-
		4	3			
Sub-Total		4	3	78,450	2	57,480

*THESE COLUMNS USED FOR THE NUMBER OF POSITIONS IN EACH CLASSIFICATION.

COMMENTARY: This Division was previously 9200.
 (1) Engineer Technician III is transferred to Division 9440.
 (2) Senior Office Associate transferred to Div. 9100.

OTHER PERSONAL SERVICES COMMENTARY ACCT. No.	EXPLANATION	Estimated Hours	1980		
			REQUESTED	RECOMMENDED	APPROVED
	Contingency		3,000	930	(160)
	Sub-Total:		81,450	58,410	57,320
	Personnel Benefits		24,560	17,640	17,320
	Other		790	790	790
	Overtime				
	Sub-total:		106,800	76,840	75,430
	Operational Budget	100%	106,800	76,840	75,430
	Capital Improvement Budget				
	Total:	100%	106,800	76,840	75,430

Department	Unit No.	Division	Unit No.	Section	Unit No.
Municipal Utilities	9000	Finance & Administration	9600	Administration	9610



Department	Unit No.	Division	Unit No.	Division	Unit No.			
Municipal Utilities	9000	Finance & Administration	9600	Financial Management	9620			
CLASSIFICATION	RANGE & STEP	POSITIONS 1979 BUDGET	1980					
			REQUESTED	RECOMMENDED	APPROVED			
Financial Management Specialist (1)	17E-N	0	1	41,420	0	-0-	0	-0-
Principal Accountant (2)	16A-FN	1	2	60,190	2	67,180	2	67,180
Senior Administrative Officer	15B-N	1	1	25,990	1	25,990	1	25,990
Senior Accountant (2)	14E-N	1	0	-0-	1	30,020	1	30,020
Senior Accountant	AMEA	1	1	25,400	1	25,400	1	25,400
Senior Office Assistant (3)	AMEA	0	1	13,330	1	13,330	1	13,330
Subtotal		4	6	166,330	6	161,920	6	161,920

*THESE COLUMNS USED FOR THE NUMBER OF POSITIONS IN EACH CLASSIFICATION.

COMMENTARY: This Division was previously 9210.

- (1) Financial Management Specialist reclassified from Principal Accountant.
- (2) Principal Accountant reclassified from Senior Accountant.
- (2) Principal Accountant reclassified from Engineer Technician III Division 9320.
- (3) Senior Office Assistant reclassified from Engineer Technician III Division 9320.

OTHER PERSONAL SERVICES COMMENTARY ACCT. No.	EXPLANATION	Estimated Hours	1980		
			REQUESTED	RECOMMENDED	APPROVED
	Contingency Sub-Total:		(8,140)	-0-	(2,320)
	Personnel Benefits		49,860	50,720	50,020
	Other		16,020	14,270	14,270
	Overtime				
	Sub-total:		224,070	226,910	223,890
	Operational Budget	100%	224,070	226,910	223,890
	Capital Improvement Budget				
	Total:	100%	224,070	226,910	223,890

Department	Unit No.	Division	Unit No.	Section	Unit No.
Municipal Utilities	9000	Finance & Administration	9600	Financial Management	9620

Utility Division Manager
1/1 E-1

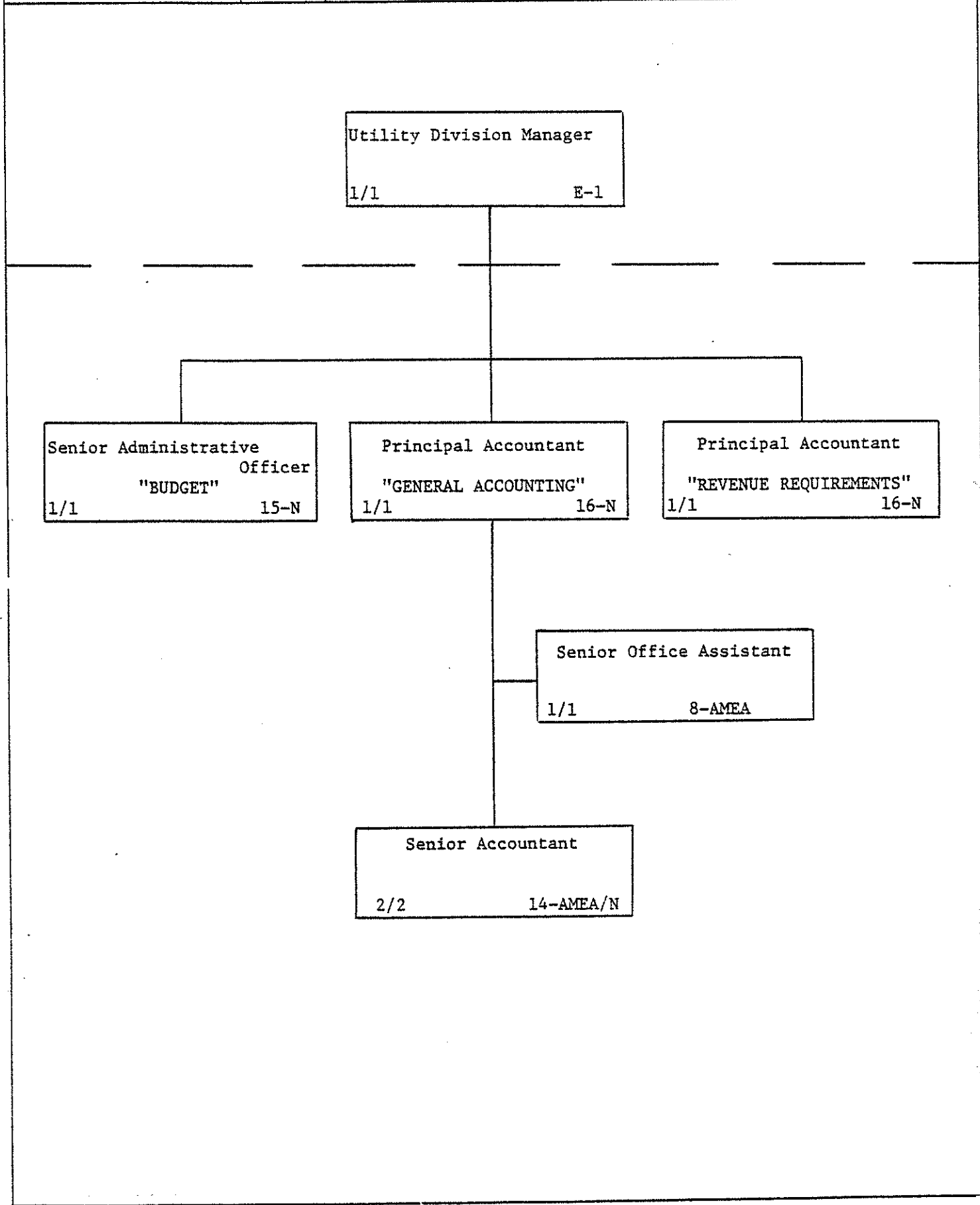
Senior Administrative Officer
"BUDGET"
1/1 15-N

Principal Accountant
"GENERAL ACCOUNTING"
1/1 16-N

Principal Accountant
"REVENUE REQUIREMENTS"
1/1 16-N

Senior Office Assistant
1/1 8-AMEA

Senior Accountant
2/2 14-AMEA/N



Department	Unit No.	Division	Unit No.	Division	Unit No.			
Municipal Utilities	9000	Finance & Administration	9600	Administrative Services	9630			
CLASSIFICATION	RANGE & STEP	POSITIONS 1979 BUDGET	1980					
			REQUESTED	RECOMMENDED	APPROVED			
Principal Administrative Officer (1)	16E-N	0	1	36,860	1	36,860	1	36,860
Senior Administrative Officer (2)	15F-N	1	0	-0-	1	36,150	1	36,150
Senior Administrative Officer	AMEA	1	1	27,610	1	27,610	1	27,610
Senior Office Associate	AMEA	1	1	15,850	1	15,850	1	15,850
Subtotal		3	3	80,320	4	116,470	4	116,470

*THESE COLUMNS USED FOR THE NUMBER OF POSITIONS IN EACH CLASSIFICATION.

COMMENTARY: This Division was previously 9220.

- (1) Principal Administrative Officer reclassified from Senior Administrative Officer.
- (2) Senior Administrative Officer transferred from Div. 9510.

OTHER PERSONAL SERVICES COMMENTARY		Estimated Hours	1980		
ACCT. No.	EXPLANATION		REQUESTED	RECOMMENDED	APPROVED
	Contingency		(3,900)	(470)	(1,990)
	Sub-Total:		76,420	116,000	114,480
	Personnel Benefits		23,640	35,510	35,050
	Other Overtime		4,760	4,740	4,740
	Sub-total:		104,820	156,250	154,270
	Operational Budget	37%	10,480	57,810	57,080
	Capital Improvement Budget	63%	94,340	98,440	97,190
	Total:	100%	104,820	156,250	154,270

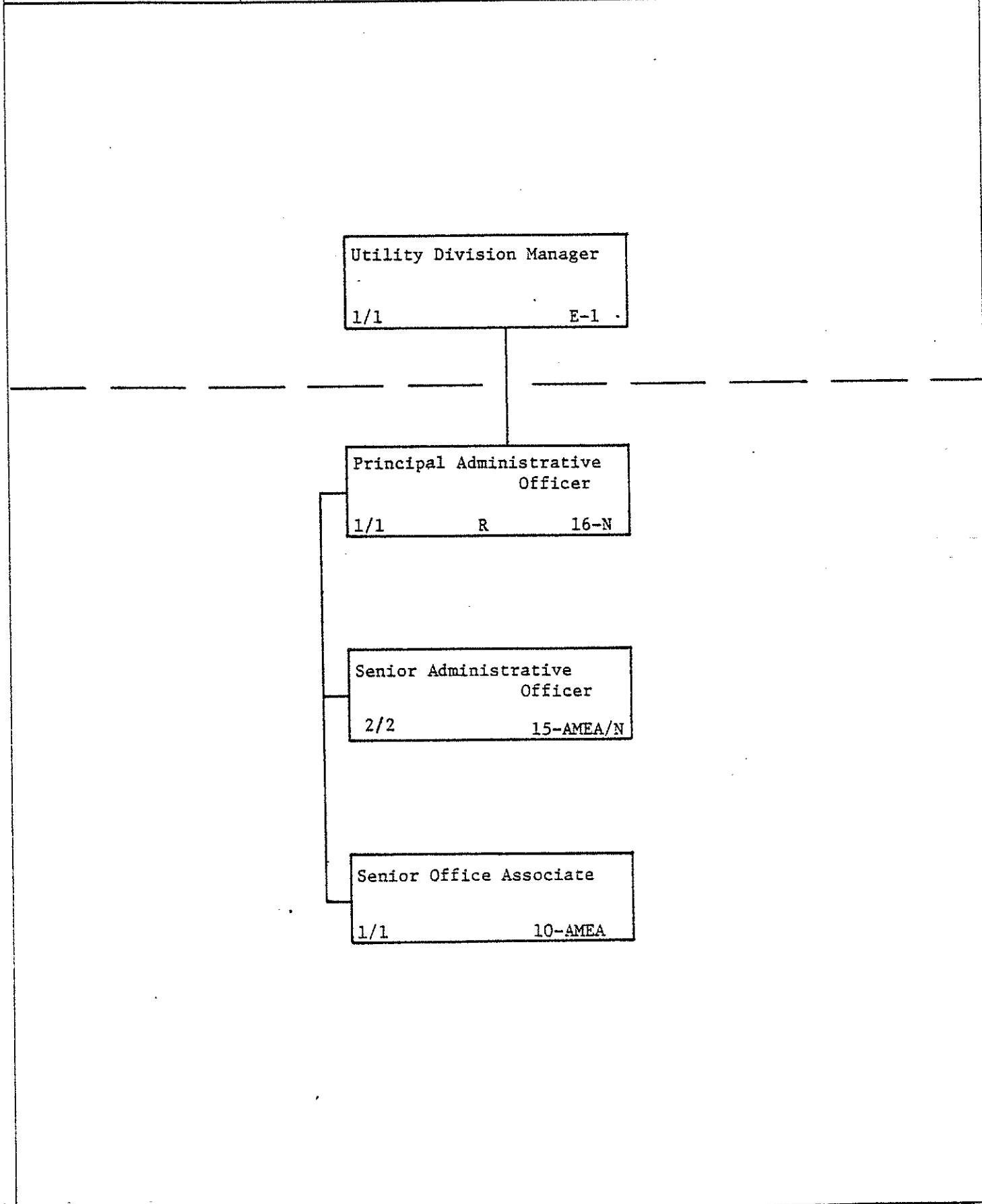
Department	Unit No.	Division	Unit No.	Section	Unit No.
Municipal Utilities	9000	Finance & Administration	9600	Administrative Services	9630

Utility Division Manager
1/1 E-1

Principal Administrative Officer
1/1 R 16-N

Senior Administrative Officer
2/2 15-AMEA/N

Senior Office Associate
1/1 10-AMEA



Department	Unit No.	Division	Unit No.	Division	Unit No.			
Municipal Utilities	9000	Engineering & Planning	9300	Administration	9310			
CLASSIFICATION	RANGE & STEP	POSITIONS 1979 BUDGET	1980					
			REQUESTED	RECOMMENDED	APPROVED			
Utility Division Manager	E-1	1	1	41,670	1	41,670	1	41,670
Administrative Technical Research Technician (1)	AMEA	0	1	28,740	1	28,740	1	28,740
Office Associate	AMEA	2	2	28,930	2	28,930	2	28,930
Subtotal		3	4	99,340	4	99,340	4	99,340

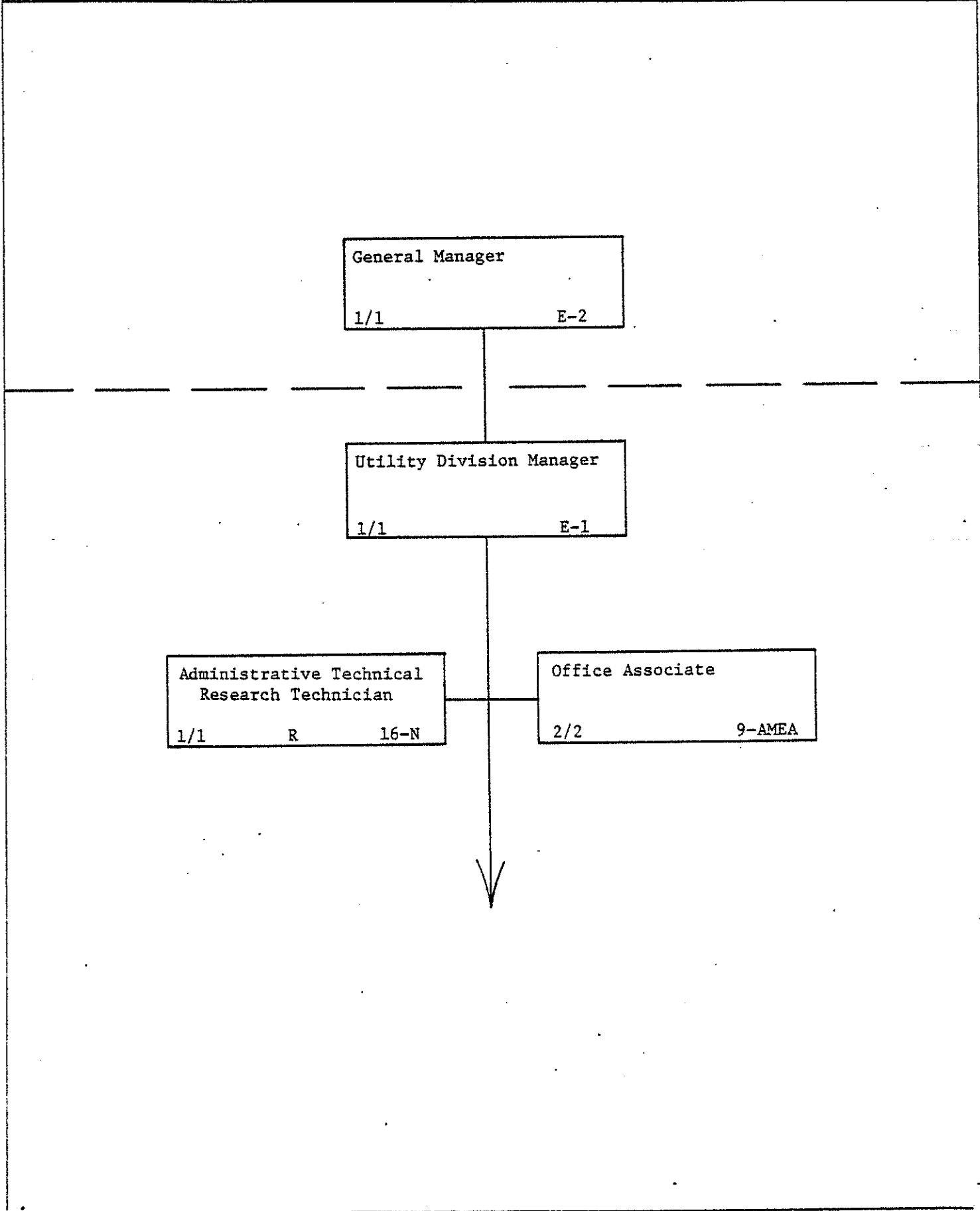
*THESE COLUMNS USED FOR THE NUMBER OF POSITIONS IN EACH CLASSIFICATION.

COMMENTARY: This Division was previously 9400.

(1) Administrative Technical Research Technician reclassified from Engineer Technician II Division 9330.

OTHER PERSONAL SERVICES COMMENTARY	ACCT. No.	EXPLANATION	Estimated Hours	1980		
				REQUESTED	RECOMMENDED	APPROVED
		Contingency		(10,680)	(20)	(1,430)
		Sub-Total:		88,660	99,320	97,910
		Personnel Benefits		26,600	29,800	29,370
		Other				
		Overtime				
		Sub-total:		115,260	129,120	127,280
		Operational Budget	35%	39,780	45,190	44,550
		Capital Improvement Budget	65%	75,480	83,930	82,730
		Total:	100%	115,260	129,120	127,280

Department	Unit No.	Division	Unit No.	Section	Unit No.
Municipal Utilities	9000	Engineering & Planning	9300	Administration	9310



Department	Unit No.	Division	Unit No.	Division	Unit No.			
Municipal Utilities	9000	Engineering & Planning	9300	Engineering	9320			
CLASSIFICATION	RANGE & STEP	POSITIONS 1979 BUDGET	1980					
			REQUESTED	RECOMMENDED	APPROVED			
Civil Engineer IV	18D-N	2	2	83,900	2	83,900	2	83,900
Civil Engineer III (1)	AMEA	2	5	156,200	2	61,090	2	61,090
Civil Engineer II	AMEA	2	2	60,440	5	146,650	5	146,650
Engineer Technician IV (1)	AMEA	3	2	68,970	2	68,970	2	68,970
Engineer Technician III (2)	AMEA	8	6	154,240	6	154,240	6	154,240
Subtotal		17	17	523,750	17	514,850	17	514,850
Deleted Positions FTE		0	0		(2)	(48,400)	0	-0-
Sub-Total		17	17	523,750	15	466,450	17	514,850

*THESE COLUMNS USED FOR THE NUMBER OF POSITIONS IN EACH CLASSIFICATION.

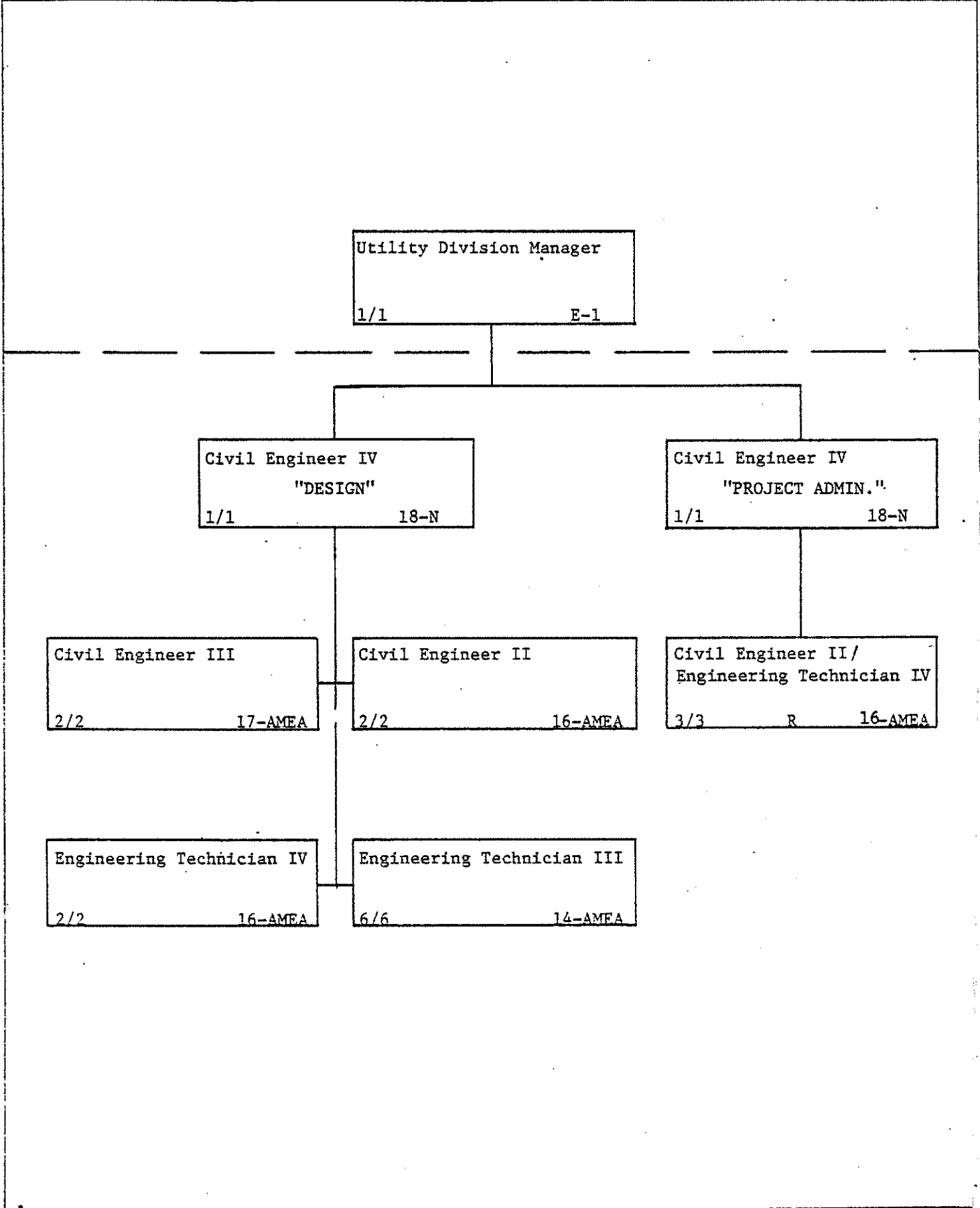
COMMENTARY: This Division was previously 9410 & 9430.

(1) Civil Engineer III reclassified from Engineer Technician IV and (2) from Engineer Technician II Division 9330.

(2) 2 Engineer Technician III reclassified and transferred to Division 9220.

OTHER PERSONAL SERVICES COMMENTARY ACCT. No.	EXPLANATION	Estimated Hours	1980		
			REQUESTED	RECOMMENDED	APPROVED
	Contingency		(63,170)	(8,000)	(14,800)
	Sub-Total:		460,580	458,450	500,050
	Personnel Benefits		141,570	140,510	152,990
	Other		22,620	19,830	19,830
	Overtime				
	Sub-total:		624,770	618,790	672,870
	Operational Budget	10%	62,480	61,880	67,290
	Capital Improvement Budget	90%	562,290	556,910	605,580
	Total:	100%	624,770	618,790	672,870

Department	Unit No.	Division	Unit No.	Section	Unit No.
Municipal Utilities	9000	Engineering & Planning	9300	Engineering	9320



MUNICIPALITY OF ANCHORAGE

PERSONNEL

Department	Unit No.	Division	Unit No.	Division	Unit No.
Municipal Utilities	9000	Engineering & Planning	9300	Planning	9330

CLASSIFICATION	RANGE & STEP	POSITIONS 1979 BUDGET	1980					
			REQUESTED	RECOMMENDED	APPROVED			
Civil Engineer IV	18A-N	1	1	31,700	1	31,700	1	31,700
Engineer Technician IV	AMEA	2	2	76,550	2	76,550	2	76,550
Engineer Technician III	AMEA	3	3	78,680	3	78,680	2	53,470
Engineer Technician II (1)	AMEA	4	1	19,690	1	19,690	0	-0-
Engineer Technician I	AMEA	1	1	16,060	1	16,060	1	16,060
Subtotal		11	8	222,680	8	222,680	6	177,780
<u>Deleted Position</u> FTE		0	0		(1)	(20,930)	0	-0-
Sub-Total		11	8	222,680	7	201,750	6	177,780

*THESE COLUMNS USED FOR THE NUMBER OF POSITIONS IN EACH CLASSIFICATION.

COMMENTARY: This Division was previously 9420.

(1) Engineer Technician II positions reclassified and transferred 2 to Division 9320 and 1 to Division 9310.

OTHER PERSONAL SERVICES COMMENTARY		Estimated Hours	1980		
ACCT. No.	EXPLANATION		REQUESTED	RECOMMENDED	APPROVED
	Contingency		(26,950)	(3,600)	(4,250)
	Sub-Total:		195,730	198,150	173,530
	Personnel Benefits		59,520	60,240	52,850
	Other				
	Overtime		5,320	5,320	5,320
	Sub-total:		260,570	263,710	231,700
	Operational Budget	90%	234,510	237,340	208,530
	Capital Improvement Budget	10%	26,060	26,370	23,170
	Total:	100%	260,570	263,710	231,700

Department	Unit No.	Division	Unit No.	Section	Unit No.
Municipal Utilities	9000	Engineering & Planning	9300	Planning	9330

Utility Division Manager
1/1 E-1

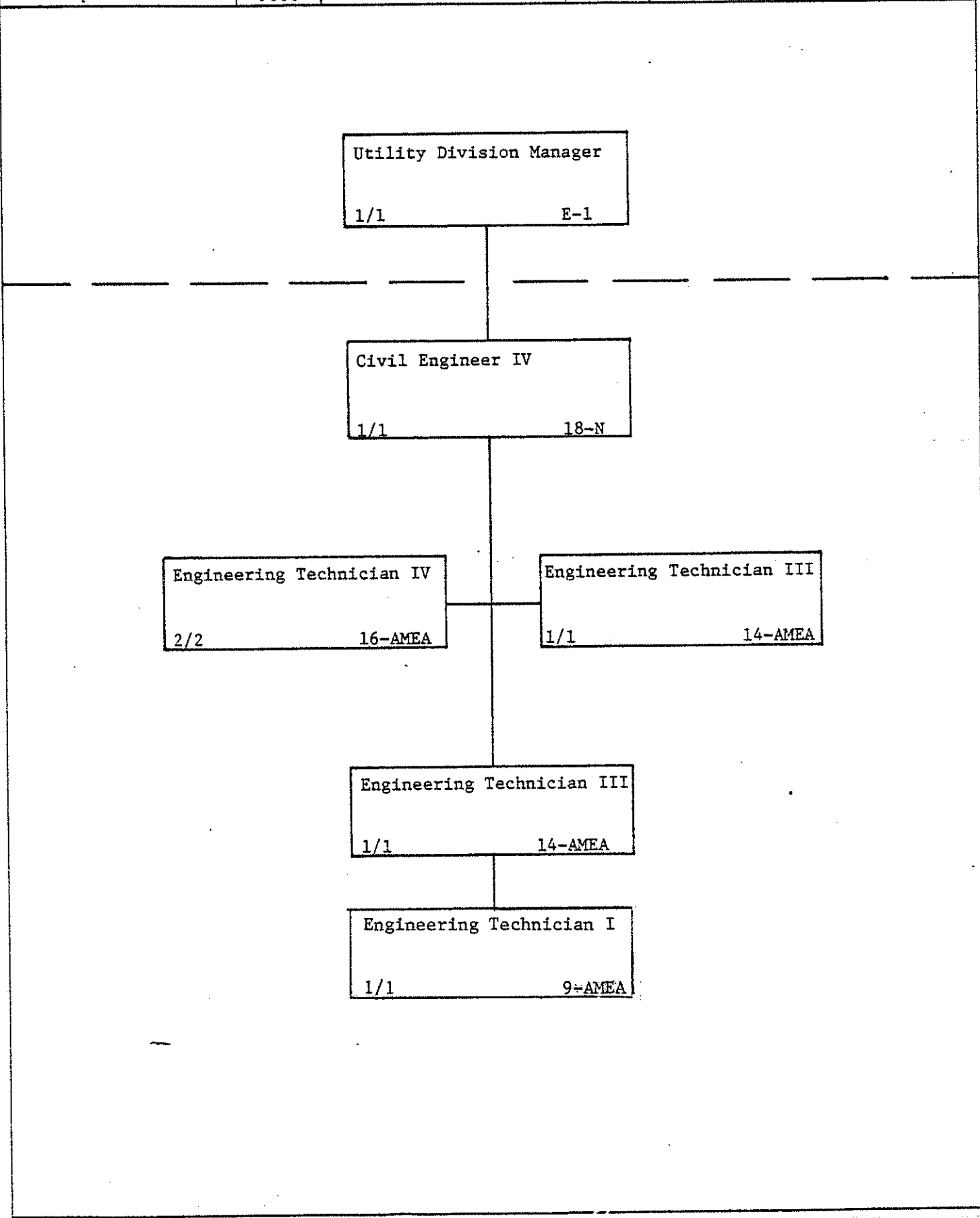
Civil Engineer IV
1/1 18-N

Engineering Technician IV
2/2 16-AMEA

Engineering Technician III
1/1 14-AMEA

Engineering Technician III
1/1 14-AMEA

Engineering Technician I
1/1 9-AMEA



MUNICIPALITY OF ANCHORAGE

PERSONNEL

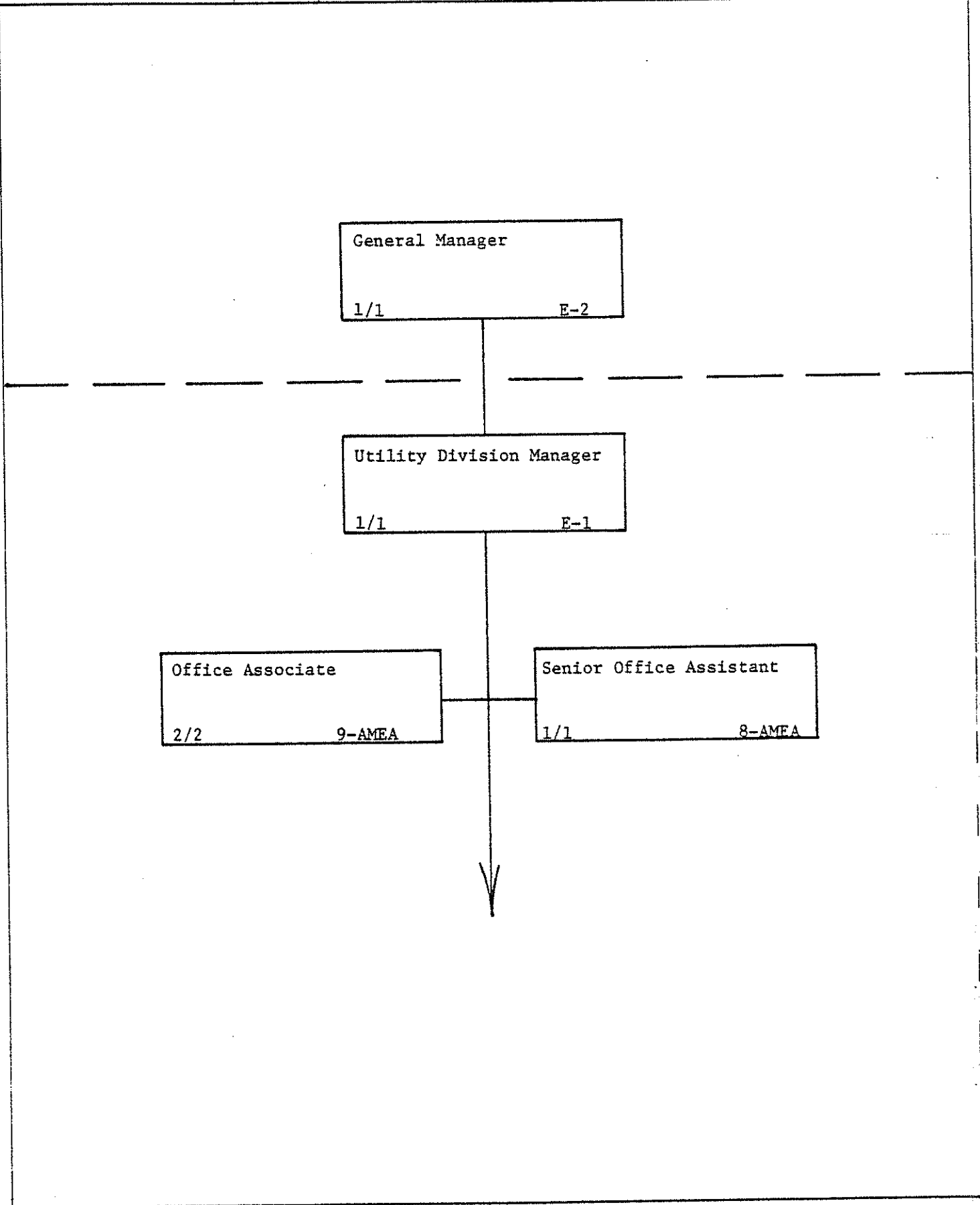
Department	Unit No.	Division	Unit No.	Division	Unit No.			
Municipal Utilities	9000	Operations & Maintenance	9400	Administration	9410			
CLASSIFICATION	RANGE & STEP	POSITIONS 1979 BUDGET	1980					
			REQUESTED	RECOMMENDED	APPROVED			
Utility Division Manager	E-1	1	1	41,670	1	41,670	1	41,670
Office Associate	AMEA	2	2	30,740	2	30,740	2	30,740
Senior Office Assistant	AMEA	1	1	13,080	1	13,080	1	13,080
Sub-Total		4	4	85,490	4	85,490	4	85,490

*THESE COLUMNS USED FOR THE NUMBER OF POSITIONS IN EACH CLASSIFICATION.

COMMENTARY: This Division was previously 9300.

OTHER PERSONAL SERVICES COMMENTARY ACCT. No.	EXPLANATION	Estimated Hours	1980		
			REQUESTED	RECOMMENDED	APPROVED
	Contingency		(5,820)	290	(1,020)
	Sub-Total:		79,670	85,780	84,470
	Personnel Benefits		23,900	25,730	25,340
	Other				
	Overtime				
	Sub-total:		103,570	111,510	109,810
	Operational Budget	100%	103,570	111,510	109,810
	Capital Improvement Budget				
	Total:	100%	103,570	111,510	109,810

Department	Unit No.	Division	Unit No.	Section	Unit No.
Municipal Utilities	9000	Operations & Maintenance	9400	Administration	9410



Department	Unit No.	Division	Unit No.	Division	Unit No.			
Municipal Utilities	9000	Operations & Maintenance	9400	Maintenance	9420			
CLASSIFICATION	RANGE & STEP	POSITIONS 1979 BUDGET	1980					
			REQUESTED	RECOMMENDED	APPROVED			
Superintendent	17F-N	2	2	87,880	2	87,880	2	87,880
General Foreman	16F-N	3	3	105,780	3	105,780	3	105,780
Maintenance Foreman	JCC	6	6	200,540	6	200,540	6	200,540
Utility Inspector (1)	JCC	2	1	32,000	1	32,000	1	32,000
Heavy Equipment Operator Journeyman	JCC	2	2	60,070	2	60,070	2	60,070
Warehouseman Journeyman	JCC	1	1	27,230	1	27,230	1	27,230
Journeyman	JCC	27	27	776,920	27	776,920	27	776,920
Utilityman III (2)	JCC	8	7	177,950	7	177,950	7	177,950
Utilityman III PT	JCC	1	1	13,130	1	13,130	1	13,130
Utilityman II	JCC	4	4	95,100	4	95,100	4	95,100
Utilityman II PT (3)	JCC	14	11	133,640	11	133,640	1	12,150
Building Superintendent	JCC	1	1	19,550	1	19,550	1	19,550
Sub-Total Deleted Positions		56+ 15 PT	54+ 12PT	1,729,790	54+ 12PT	1,729,790	54+ 2PT	1,608,300
FTE		0	0	-0-	(4)	(102,060)	0	-0-
Subtotal		56+ 15PT	54+ 12PT	1,729,790	50+ 12PT	1,627,730	54+ 2PT	1,608,300

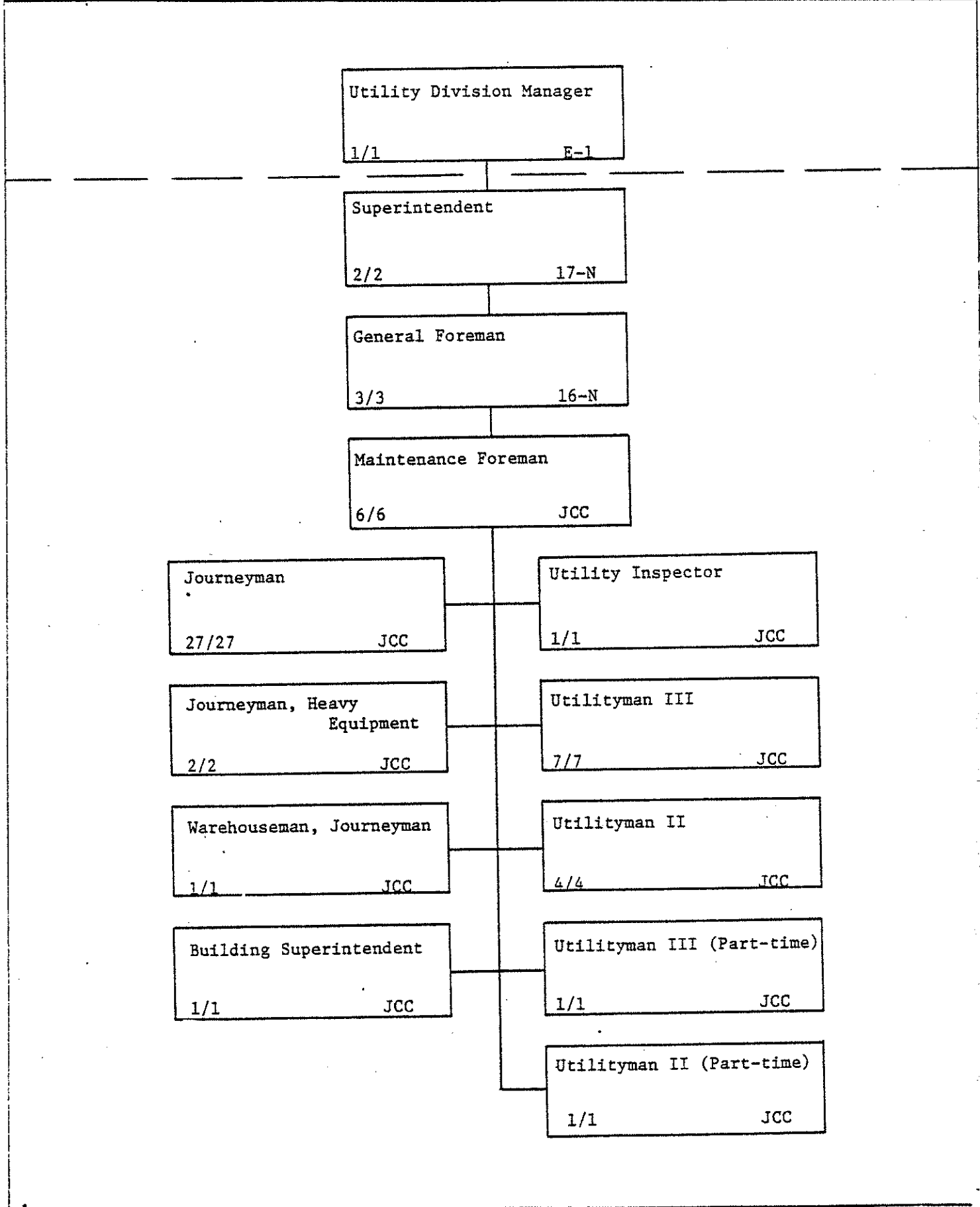
*THESE COLUMNS USED FOR THE NUMBER OF POSITIONS IN EACH CLASSIFICATION.

COMMENTARY: This Division was previously 9321 & 9341.

- (1) Utility Inspector is reclassified and transferred to Division 9540.
- (2) Utilityman III is reclassified and transferred to Division 9430.
- (3) Utilityman II PT are reclassified and transferred - 1 to Division 9540 and 2 to 9560.

OTHER PERSONAL SERVICES COMMENTARY		Estimated Hours	1980		
ACCT. No.	EXPLANATION		REQUESTED	RECOMMENDED	APPROVED
	Contingency		(84,110)	45,460	10,150
	Sub-Total:		1,645,680	1,673,190	1,618,450
	Personnel Benefits		504,200	512,460	496,040
	Other		70,030	70,030	70,030
	Overtime				
	Sub-total:		2,219,910	2,255,680	2,184,520
	Operational Budget	83%	1,847,610	1,872,210	1,813,150
	Capital Improvement Budget	17%	372,300	383,470	371,370
	Total:	100%	2,219,910	2,255,680	2,184,520

Department	Unit No.	Division	Unit No.	Section	Unit No.
Municipal Utilities	9000	Operations & Maintenance	9400	Maintenance	9420



Department	Unit No.	Division	Unit No.	Division	Unit No.
Municipal Utilities	9000	Operations & Maintenance	9400	Vehicles	9430

CLASSIFICATION	RANGE & STEP	POSITIONS 1979 BUDGET	1980					
			REQUESTED	RECOMMENDED	APPROVED			
General Foreman	16A-N	1	1	28,660	1	28,660	1	28,660
Expeditor (1)	JCC	0	1	28,440	1	28,440	1	28,440
Journeyman Mechanic	JCC	2	2	56,310	2	56,310	2	56,310
Sub-Total		3	4	113,410	4	113,410	4	113,410

*THESE COLUMNS USED FOR THE NUMBER OF POSITIONS IN EACH CLASSIFICATION.

COMMENTARY: This Division was previously 9341.

(1) Expeditor reclassified from Water Utilityman III Division 9420.

OTHER PERSONAL SERVICES COMMENTARY		Estimated Hours	1980		
ACCT. No.	EXPLANATION		REQUESTED	RECOMMENDED	APPROVED
	Contingency		(5,800)	2,800	380
	Sub-Total:		107,610	116,210	113,790
	Personnel Benefits		32,280	34,860	34,140
	Other				
	Overtime				
	Sub-total:		139,890	151,070	147,930
	Operational Budget	100%	139,890	151,070	147,930
	Capital Improvement Budget				
	Total:	100%	139,890	151,070	147,930

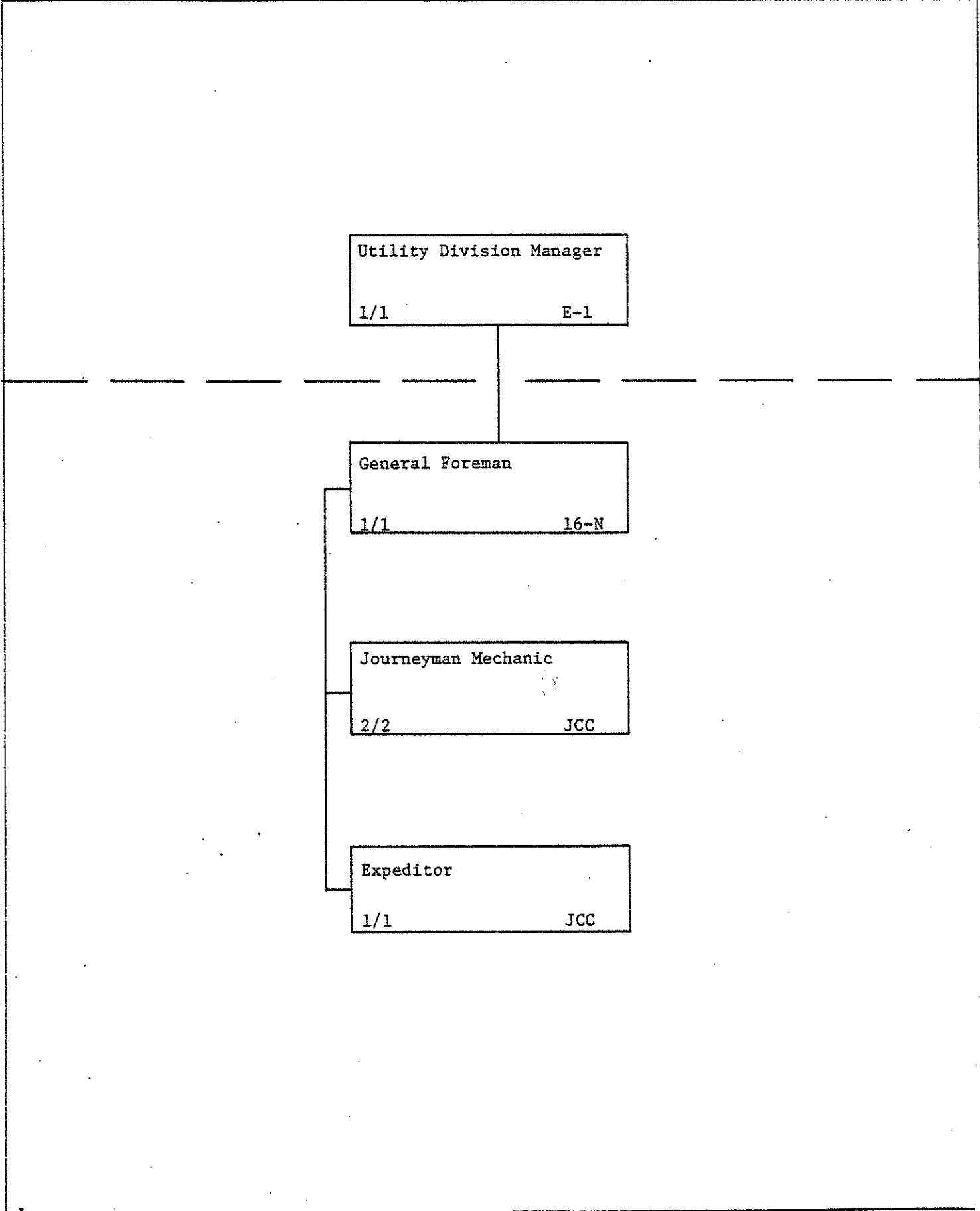
Department	Unit No.	Division	Unit No.	Section	Unit No.
Municipal Utilities	9000	Operations & Maintenance	9400	Vehicles	9430

Utility Division Manager
1/1 E-1

General Foreman
1/1 16-N

Journeyman Mechanic
2/2 JCC

Expeditor
1/1 JCC



Department	Unit No.	Division	Unit No.	Division	Unit No.			
Municipal Utilities	9000	Operations & Maintenance	9400	Customer Field Service	9440			
CLASSIFICATION	RANGE & STEP	POSITIONS 1979 BUDGET	1980					
			REQUESTED	RECOMMENDED	APPROVED			
Superintendent	17A-N	1	1	35,570	0	-0-	0	-0-
Customer Service Supt.	16B-N	0	0	-0-	1	33,860	1	33,860
General Foreman	16C-N	1	1	35,360	1	35,360	1	35,360
Field Service Foreman	JCC	1	1	30,260	1	30,260	1	30,260
Field Serv. Journeyman	JCC	3	3	88,630	3	88,630	3	88,630
Meter Installer Repairman	JCC	2	2	59,790	2	59,790	2	59,790
Field Serviceman I	JCC	3	3	78,370	3	78,370	3	78,370
Meter Reader	JCC	2	2	51,450	2	51,450	2	51,450
Utilityman III	JCC	1	1	24,300	1	24,300	1	24,300
Utilityman II	JCC	1	1	24,300	1	24,300	1	24,300
Engineer Tech.III (1)	AMEA	0	1	17,780	1	17,780	1	17,780
Utilityman I	JCC	1	1	24,980	1	24,980	1	24,980
Sr. Office Associate	AMEA	1	1	18,750	1	18,750	1	18,750
Customer Service Rep I & II	AMEA	6	6	86,100	6	86,100	6	86,100
Subtotal		23	24	575,640	24	573,930	24	573,930

*THESE COLUMNS USED FOR THE NUMBER OF POSITIONS IN EACH CLASSIFICATION.

COMMENTARY: This Division was previously 9200 & 9341.
 (1) Engineer Technician III is transferred from Division 9210.

OTHER PERSONAL SERVICES COMMENTARY ACCT. No.	EXPLANATION	Estimated Hours	1980		
			REQUESTED	RECOMMENDED	APPROVED
	Contingency		(8,290)	9,480	(1,430)
	Sub-Total:		567,350	583,410	572,500
	Personnel Benefits		174,160	178,700	175,420
	Other		26,350	24,510	24,510
	Overtime		767,860	786,620	772,430
	Sub-total:		767,860	786,620	772,430
	Operational Budget	100%	767,860	786,620	772,430
	Capital Improvement Budget				
	Total:	100%	767,860	786,620	772,430

Department	Unit No.	Division	Unit No.	Section	Unit No.
Municipal Utilities	9000	Operations & Maintenance	9400	Customer Field Service	9440

Utility Division Manager
1/1 E-1

Customer Field Service Supervisor
1/1 16-N

General Foreman
1/1 16-N

Engineering Technician III
1/1 14-AMEA

Field Service Foreman
1/1 JCC

Senior Office Associate
1/1 10-AMEA

Meter Installer Repairman
2/2 JCC

Field Service Journeyman
3/3 JCC

Customer Service Representative I & II
6/6 9-AMEA

Meter Reader
2/2 JCC

Field Serviceman I
3/3 JCC

Utilityman III
1/1 JCC

Utilityman II
1/1 JCC

Utilityman I
1/1 JCC

Department	Unit No.	Division	Unit No.	Division	Unit No.			
Municipal Utilities	9000	Treatment	9500	Administration	9510			
CLASSIFICATION	RANGE & STEP	POSITIONS 1979 BUDGET	1980					
			REQUESTED	RECOMMENDED	APPROVED			
Utility Division Manager (1)	E-1	0	1	41,670	1	41,670	1	41,670
Expeditor	JCC	1	1	28,440	1	28,440	1	28,440
Warehouseman Journeyman	JCC	1	1	29,130	1	29,130	1	29,130
Senior Administrative Officer (2)	15F-N	1	1	36,150	0	-0-	0	-0-
Office Associate	AMEA	2	2	28,370	2	28,370	2	28,370
Subtotal		5	6	163,760	5	127,610	5	127,610

*THESE COLUMNS USED FOR THE NUMBER OF POSITIONS IN EACH CLASSIFICATION.

COMMENTARY: This Division was previously 9330 & 9331.

- (1) Utility Division Manager is reclassified from Operator II Division 9530.
- (2) Senior Administrative Officer transferred to Div. 9230.

OTHER PERSONAL SERVICES COMMENTARY		Estimated Hours	1980		
ACCT. No.	EXPLANATION		REQUESTED	RECOMMENDED	APPROVED
	Contingency		(9,120)	2,420	(100)
	Sub-Total:		154,640	130,030	127,510
	Personnel Benefits		46,390	39,010	38,250
	Other Overtime				
	Sub-total:		201,030	169,040	165,760
	Operational Budget	100%	201,030	169,040	165,760
	Capital Improvement Budget				
	Total:	100%	201,030	169,040	165,760

Department	Unit No.	Division	Unit No.	Section	Unit No.
Municipal Utilities	9000	Treatment	9500	Administration	9510

General Manager
1/1 E-2

Utility Division Manager
1/1 R E-1

Office Associate
2/2 9-AMEA

Expediter
1/1 JCC

Warehouseman Journeyman
1/1 JCC



Department	Unit No.	Division	Unit No.	Division	Unit No.			
Municipal Utilities	9000	Treatment	9500	Waste Water Treatment	9520			
CLASSIFICATION	RANGE & STEP	POSITIONS 1979 BUDGET	1980					
			REQUESTED	RECOMMENDED	APPROVED			
Superintendent	17F-N	1	1	43,240	1	43,240	1	43,240
Subtotal		1	1	43,240	1	43,240	1	43,240

*THESE COLUMNS USED FOR THE NUMBER OF POSITIONS IN EACH CLASSIFICATION.

COMMENTARY: This Division was previously 9330.

OTHER PERSONAL SERVICES COMMENTARY		Estimated Hours	1980		
ACCT. No.	EXPLANATION		REQUESTED	RECOMMENDED	APPROVED
	Contingency		(2,700)	300	(400)
	Sub-Total:		40,540	43,540	42,840
	Personnel Benefits		12,160	13,060	12,850
	Other				
	Overtime				
	Sub-total:		52,700	56,600	55,690
	Operational Budget	99%	52,170	56,030	55,130
	Capital Improvement Budget	1%	530	570	560
	Total:	100%	52,700	56,600	55,690

Department	Unit No.	Division	Unit No.	Section	Unit No.
Municipal Utilities	9000	Treatment	9500	Waste Water Treatment Administration	9520

Utility Division Manager
1/1 E-1

Superintendent
1/1 17-N



Department	Unit No.	Division	Unit No.	Division	Unit No.			
Municipal Utilities	9000	Treatment	9500	Waste Water Treatment Anchorage	9521			
CLASSIFICATION	RANGE & STEP	POSITIONS 1979 BUDGET	1980					
			REQUESTED	RECOMMENDED	APPROVED			
General Foreman	16F-N	1	1	38,280	1	38,280	1	38,280
Maintenance Foreman	JCC	1	1	32,080	1	32,080	1	32,080
Senior Treatment Plant Operator (1)	JCC	7	5	142,440	5	142,440	5	142,440
Operator II (2)	JCC	11	10	266,270	10	266,270	10	266,270
Operator I	JCC	5	5	128,650	5	128,650	5	128,650
Subtotal		25	22	607,720	22	607,720	22	607,720
<u>Deleted Positions</u> FTE		0	0		(4)	(108,780)	0	-0-
Sub-Total		25	22	607,720	18	498,940	22	607,720

*THESE COLUMNS USED FOR THE NUMBER OF POSITIONS IN EACH CLASSIFICATION.

COMMENTARY: This Division was previously 9330 & 9331.

(1) Senior Treatment Plant Operators reclassified and transferred to Division 9570.

(2) Operator II is reclassified and transferred to Division 9510.

OTHER PERSONAL SERVICES COMMENTARY		Estimated Hours	1980		
ACCT. No.	EXPLANATION		REQUESTED	RECOMMENDED	APPROVED
	Contingency		(27,730)	14,430	(2,270)
	Sub-Total:		579,990	513,370	605,450
	Personnel Benefits		179,650	159,220	186,840
	Other Overtime		37,680	34,700	34,700
	Sub-total:		797,320	707,290	826,990
	Operational Budget	99%	789,350	700,220	818,720
	Capital Improvement Budget	1%	7,970	7,070	8,270
	Total:	100%	797,320	707,290	826,990

Department	Unit No.	Division	Unit No.	Section	Unit No.
Municipal Utilities	9000	Treatment	9500	Waste Water Treatment Anchorage	9521

Superintendent
1/1 17-N

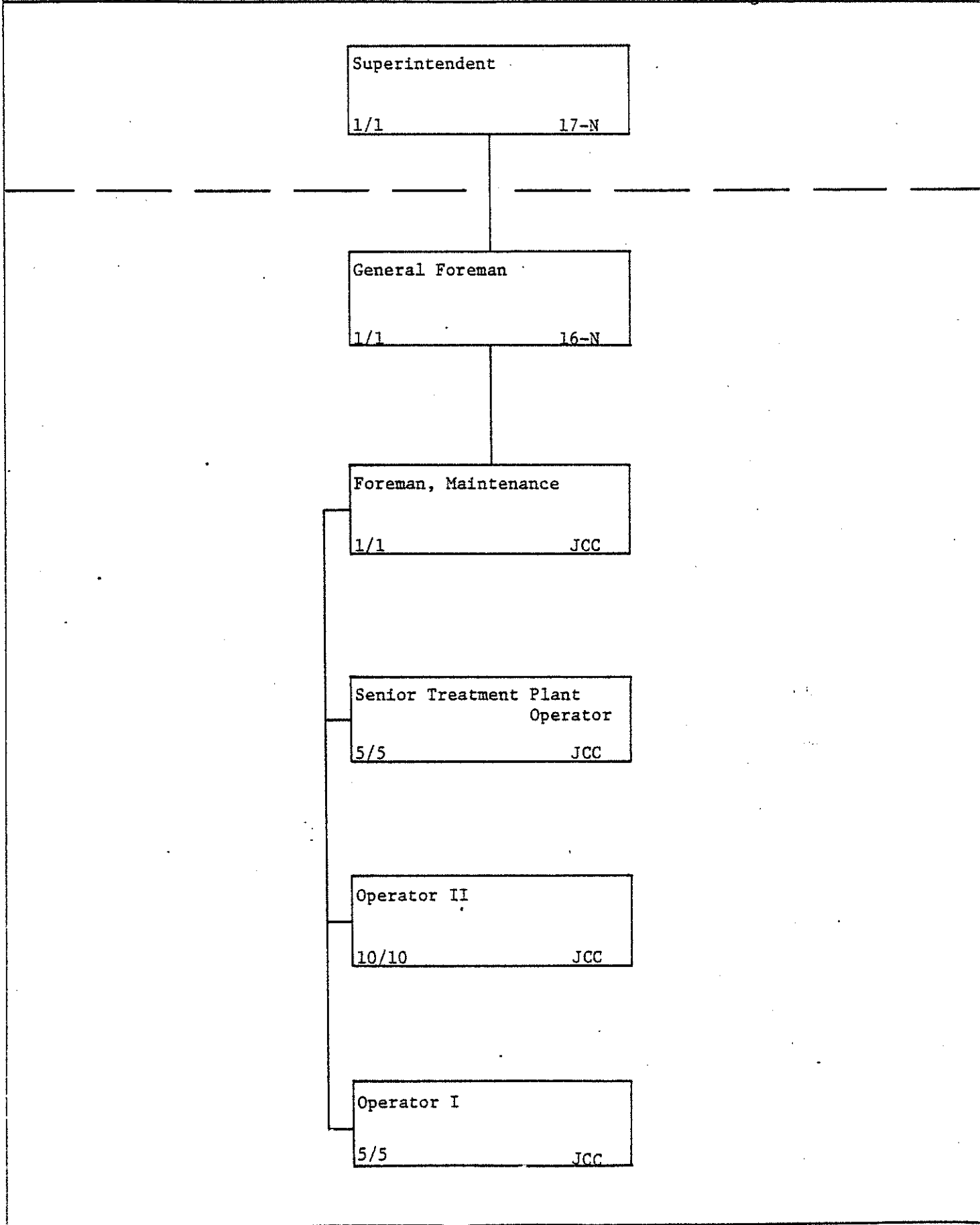
General Foreman
1/1 16-N

Foreman, Maintenance
1/1 JCC

Senior Treatment Plant Operator
5/5 JCC

Operator II
10/10 JCC

Operator I
5/5 JCC



MUNICIPALITY OF ANCHORAGE

PERSONNEL

Department	Unit No.	Division	Unit No.	Division	Unit No.			
Municipal Utilities	9000	Treatment	9500	Waste Water Treatment Eagle River	9522			
CLASSIFICATION	RANGE & STEP	POSITIONS 1979 BUDGET	1980					
			REQUESTED	RECOMMENDED	APPROVED			
General Foreman (1)	16A-N	0	1	28,660	1	28,660	1	28,660
Senior Treatment Plant Operator (2)	JCC	1	2	56,880	2	42,660	2	42,660
Operator II	JCC	1	1	27,230	1	13,610	1	13,610
Subtotal		2	4	112,770	4	84,930	4	84,930

*THESE COLUMNS USED FOR THE NUMBER OF POSITIONS IN EACH CLASSIFICATION.

COMMENTARY: This Division was previously 9332.

(1) General Foreman is reclassified from Utility Inspector Division 9420.

(2) Senior Treatment Plant Operator is reclassified from Utilityman II PT Division 9420.

OTHER PERSONAL SERVICES COMMENTARY		Estimated Hours	1980		
ACCT. No.	EXPLANATION		REQUESTED	RECOMMENDED	APPROVED
	Contingency		(5,530)	1,930	160
	Sub-Total:		107,240	86,860	85,090
	Personnel Benefits		33,230	27,040	26,510
	Other		7,040	6,510	6,510
	Overtime				
	Sub-total:		147,510	120,410	118,110
	Operational Budget	100%	147,510	120,410	118,110
	Capital Improvement Budget				
	Total:	100%	147,510	120,410	118,110

Department	Unit No.	Division	Unit No.	Section	Unit No.
Municipal Utilities	9000	Treatment	9500	Waste Water Treatment Eagle River	9522

Superintendent
1/1 17-N

General Foreman
1/1 16-N

Senior Treatment Plant
Operator
2/2 JCC

Operator II
1/1 JCC

MUNICIPALITY OF ANCHORAGE

PERSONNEL

Department	Unit No.	Division	Unit No.	Division	Unit No.			
Municipal Utilities	9000	Treatment	9500	Waste Water Treatment Girdwood	9523			
CLASSIFICATION	RANGE & STEP	POSITIONS 1979 BUDGET	1980					
			REQUESTED	RECOMMENDED	APPROVED			
General Foreman	16C-N	1	1	33,930	1	33,930	1	33,930
Senior Treatment Plant Operator	JCC	2	2	57,540	2	57,540	2	57,540
Operator II	JCC	1	1	27,230	1	27,230	1	27,230
Subtotal		4	4	118,700	4	118,700	4	118,700

*THESE COLUMNS USED FOR THE NUMBER OF POSITIONS IN EACH CLASSIFICATION.

COMMENTARY: This Division was previously 9333.

OTHER PERSONAL SERVICES COMMENTARY	ACCT. No.	EXPLANATION	Estimated Hours	1980		
				REQUESTED	RECOMMENDED	APPROVED
		Contingency		(5,890)	2,840	330
		Sub-Total:		112,810	121,540	119,030
		Personnel Benefits		34,140	36,760	36,010
		Other		1,970	1,970	1,970
		Overtime				
		Sub-total:		148,920	160,270	157,010
		Operational Budget	100%	148,920	160,270	157,010
		Capital Improvement Budget				
		Total:	100%	148,920	160,270	157,010

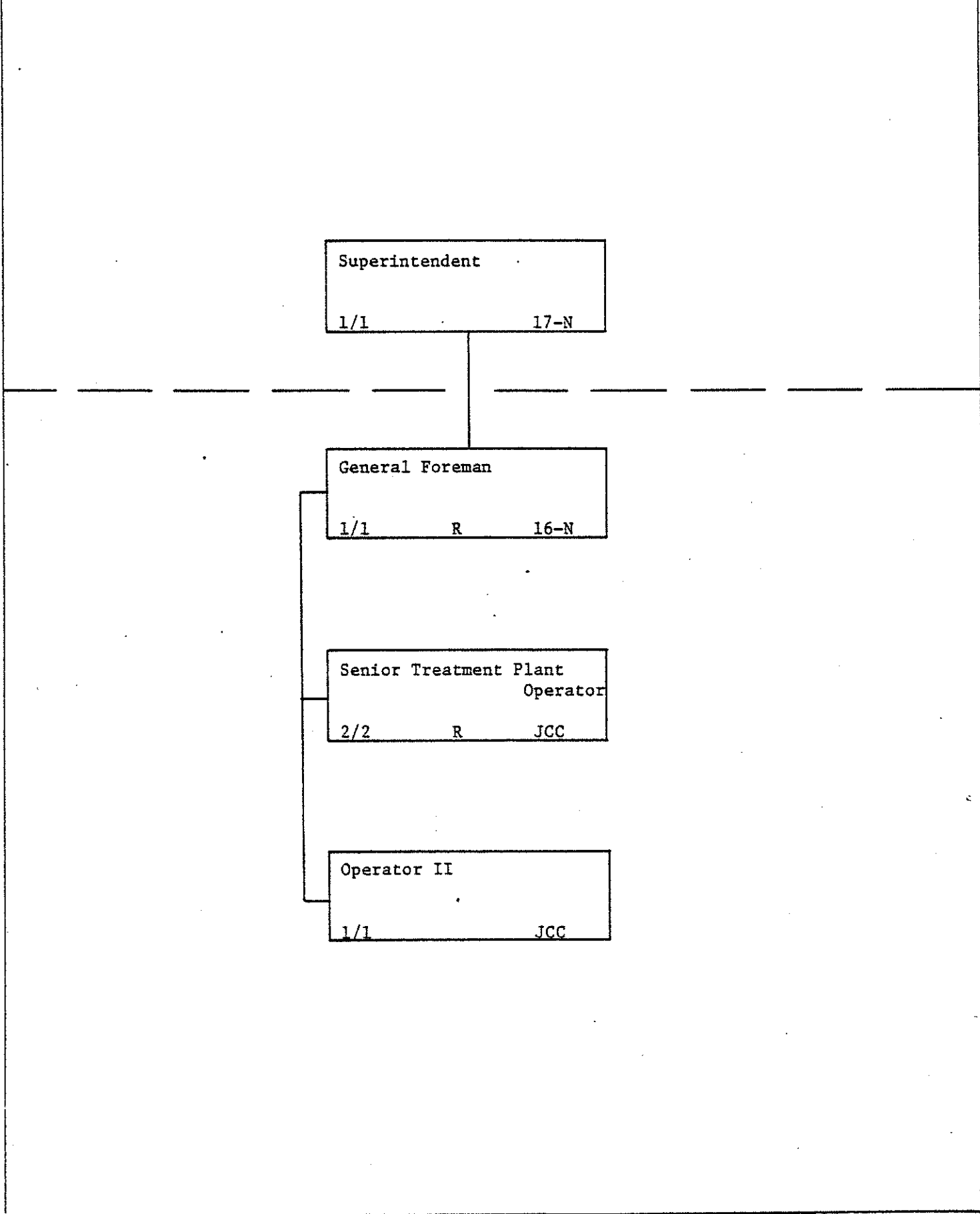
Department	Unit No.	Division	Unit No.	Section	Unit No.
Municipal Utilities	9000	Treatment	9500	Waste Water Treatment Girdwood	9523

Superintendent
1/1 17-N

General Foreman
1/1 R 16-N

Senior Treatment Plant
Operator
2/2 R JCC

Operator II
1/1 JCC



Department	Unit No.	Division	Unit No.	Division	Unit No.			
Municipal Utilities	9000	Treatment	9500	Repair, Service & Pump Stations	9560			
CLASSIFICATION	RANGE & STEP	POSITIONS 1979 BUDGET	1980					
			REQUESTED	RECOMMENDED	APPROVED			
General Foreman	16A-N	1	*	28,660	*	28,660	1	28,660
Maintenance Foreman	JCC	3	3	93,320	3	93,320	3	93,320
Mechanic Machinist	JCC	1	1	28,140	1	28,140	1	28,140
Mechanic Welder	JCC	1	1	29,690	1	29,690	1	29,690
Mechanic Leadman	JCC	1	1	28,920	1	28,920	1	28,920
Plant Mechanic	JCC	1	1	27,230	1	27,230	1	27,230
Instrument Technician	JCC	1	1	28,440	1	28,440	1	28,440
Electrician (1)	JCC	1	3	81,680	3	81,680	3	81,680
Journeyman Craftsman	JCC	1	1	27,230	1	27,230	1	27,230
Utilityman II (2)	JCC	0	2	48,590	2	48,590	2	48,590
Utilityman II PT (1)	JCC	2	0	-0-	0	-0-	0	-0-
Subtotal		11+ 2 PT	15	421,900	15	421,900	15	421,900

*THESE COLUMNS USED FOR THE NUMBER OF POSITIONS IN EACH CLASSIFICATION.

COMMENTARY: This Division was previously 9331.

(1) Electricians are reclassified from Utilityman II PT.

(2) Utilityman II are reclassified from Utilityman II PT from Division 9420.

OTHER PERSONAL SERVICES COMMENTARY ACCT. No.	EXPLANATION	Estimated Hours	1980		
			REQUESTED	RECOMMENDED	APPROVED
	Vacancy Factor Sub-Total:				
	Personnel Benefits Other Overtime				
	Sub-total:				
	Operational Budget Capital Improvement Budget				
	Total:				

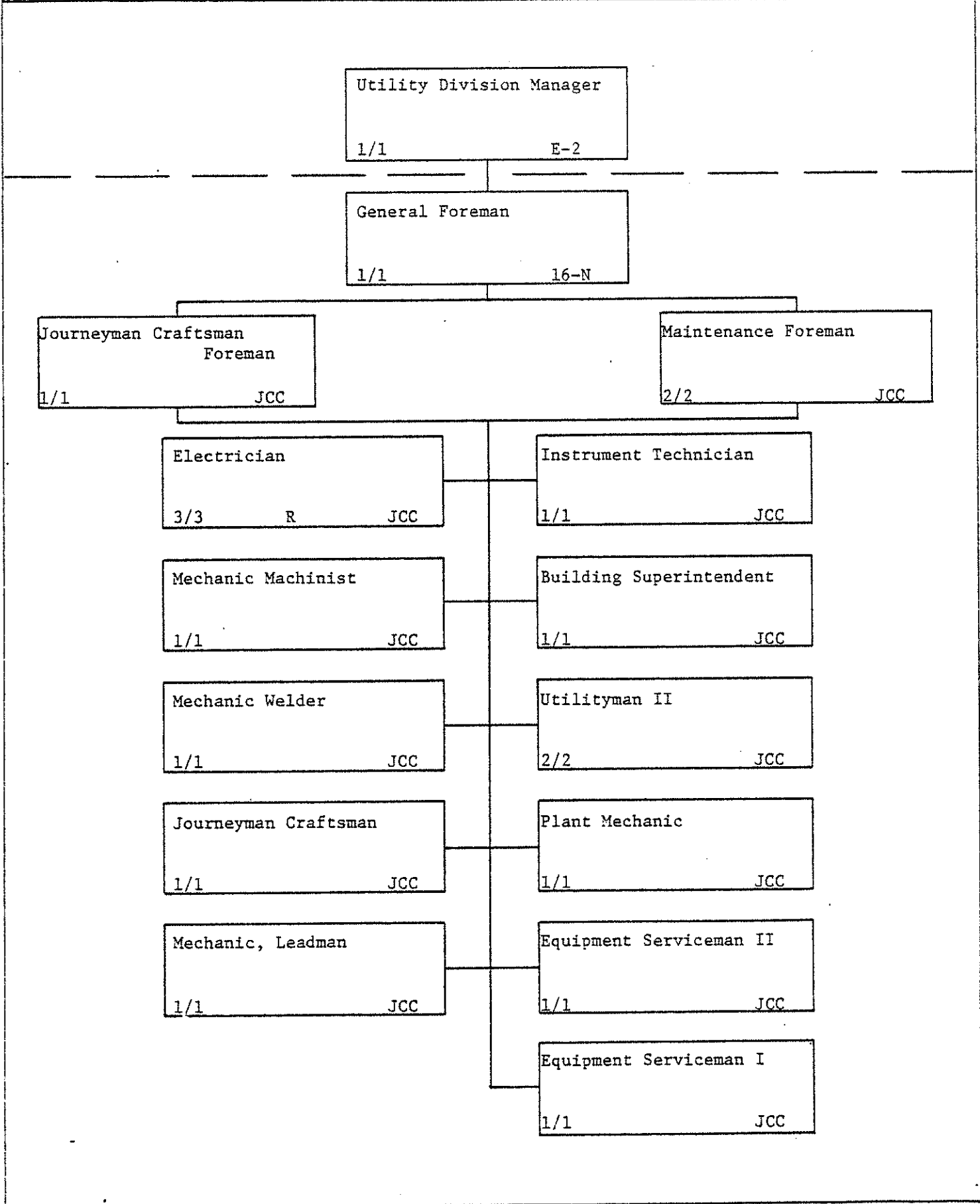
Department	Unit No.	Division	Unit No.	Division	Unit No.			
Municipal Utilities	9000	Treatment	9500	Repair, Service & Pump Stations	9560			
CLASSIFICATION	RANGE & STEP	POSITIONS 1979 BUDGET	1980					
			REQUESTED	RECOMMENDED	APPROVED			
Equipment Serviceman II	JCC	1	1	21,280	1	21,280	1	21,280
Equipment Serviceman I	JCC	1	1	23,970	1	23,970	1	23,970
Building Superintendent	JCC	1	1	19,550	1	19,550	1	19,550
Subtotal		14+ 2PT		486,700	18	486,700	18	486,700
<u>Deleted Positions</u> FTE		0	0		(1)	(27,740)	0	-0-
Sub-total		14+ 2 PT	18	486,700	17	458,960		486,700

*THESE COLUMNS USED FOR THE NUMBER OF POSITIONS IN EACH CLASSIFICATION.

COMMENTARY: This Division was previously 9331.

OTHER PERSONAL SERVICES COMMENTARY ACCT. No.	EXPLANATION	Estimated Hours	1980		
			REQUESTED	RECOMMENDED	APPROVED
	Contingency		(22,160)	13,440	1,650
	Sub-Total:		464,540	472,400	488,350
	Personnel Benefits		143,990	146,350	151,130
	Other		30,830	30,830	30,830
	Overtime				
	Sub-total:		639,360	649,580	670,310
	Operational Budget	99%	632,970	643,080	663,610
	Capital Improvement Budget	1%	6,390	6,500	6,700
	Total:	100%	639,360	649,580	670,310

Department	Unit No.	Division	Unit No.	Section	Unit No.
Municipal Utilities	9000	Treatment	9500	Repair, Service & Pump Stations	9560



Department	Unit No.	Division	Unit No.	Division	Unit No.			
Municipal Utilities	9000	Treatment	9500	Laboratory	9570			
CLASSIFICATION	RANGE & STEP	POSITIONS 1979 BUDGET	1980					
			REQUESTED	RECOMMENDED	APPROVED			
Laboratory Supervisor (1)	AMEA	0	1	27,240	1	27,240	1	27,240
Laboratory Analyst (1)	AMEA	2	1	21,100	1	21,100	1	21,100
Laboratory Assistant	AMEA	1	1	15,520	1	15,520	1	15,520
Water Quality Technician II (2)	AMEA	0	1	16,160	1	16,160	1	16,160
Water Quality Technician I (2)	AMEA	0	1	14,660	1	14,660	1	14,660
Subtotal		3	5	94,680	5	94,680	5	94,680

*THESE COLUMNS USED FOR THE NUMBER OF POSITIONS IN EACH CLASSIFICATION.

COMMENTARY: This Division was previously 9330.

(1) Laboratory Supervisor reclassified from Laboratory Analyst.

(2) Water Quality Technicians are reclassified from Senior Treatment Plant Operators Division 9530.

OTHER PERSONAL SERVICES COMMENTARY ACCT. No.	EXPLANATION	Estimated Hours	1980		
			REQUESTED	RECOMMENDED	APPROVED
	Contingency		(8,180)	(2,120)	(2,870)
	Sub-Total:		86,500	92,560	91,810
	Personnel Benefits		25,950	27,770	27,540
	Other Overtime				
	Sub-total:		112,450	120,330	119,350
	Operational Budget	100%	112,450	120,330	119,350
	Capital Improvement Budget				
	Total:	100%	112,450	120,330	119,350

Department	Unit No.	Division	Unit No.	Section	Unit No.
Municipal Utilities	9000	Treatment	9500	Laboratory	9570

Utility Division Manager
1/1 E-1

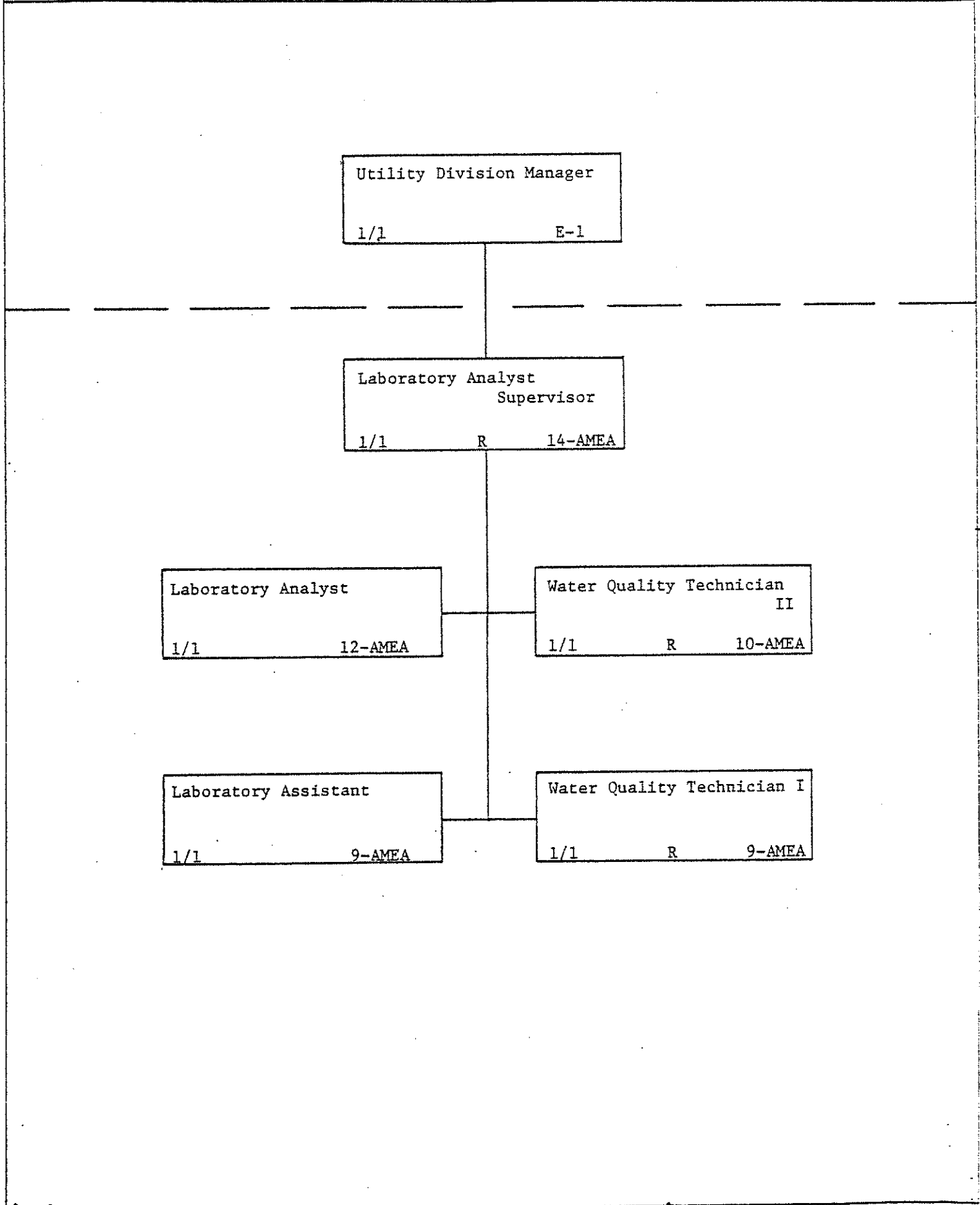
Laboratory Analyst
Supervisor
1/1 R 14-AMEA

Laboratory Analyst
1/1 12-AMEA

Water Quality Technician
II
1/1 R 10-AMEA

Laboratory Assistant
1/1 9-AMEA

Water Quality Technician I
1/1 R 9-AMEA



Department	Unit No.	Division	Unit No.	Division	Unit No.			
Municipal Utilities	9000	Treatment	9500	Water Treatment	9580			
CLASSIFICATION	RANGE & STEP	POSITIONS 1979 BUDGET	1980					
			REQUESTED	RECOMMENDED	APPROVED			
Superintendent	17F-N	1	1	44,790	1	44,790	1	44,790
General Foreman	16F-N	1	1	36,290	1	36,290	1	36,290
Senior Treatment Plant Operator	JCC	7	7	202,210	7	202,210	6	173,310
Operator II	JCC	2	2	55,890	2	55,890	2	55,890
Subtotal		11	11	339,180	11	339,180	10	310,280
<u>Deleted Position</u>		0	0		(1)	(19,330)		-0-
FTE		11	11	339,180	10	319,850		310,280

*THESE COLUMNS USED FOR THE NUMBER OF POSITIONS IN EACH CLASSIFICATION.

COMMENTARY: This Division was previously 9310 & 9311.

OTHER PERSONAL SERVICES COMMENTARY		Estimated Hours	1980		
ACCT. No.	EXPLANATION		REQUESTED	RECOMMENDED	APPROVED
	Contingency		(16,540)	7,910	1,550
	Sub-Total:		322,640	327,760	311,830
	Personnel Benefits		101,000	102,530	97,750
	Other				
	Overtime		28,040	28,040	28,040
	Sub-total:		451,680	458,330	437,620
	Operational Budget	100%	451,680	458,330	437,620
	Capital Improvement Budget				
	Total:	100%	451,680	458,330	437,620

Department	Unit No.	Division	Unit No.	Section	Unit No.
Municipal Utilities	9000	Treatment	9500	Water Treatment	9580

