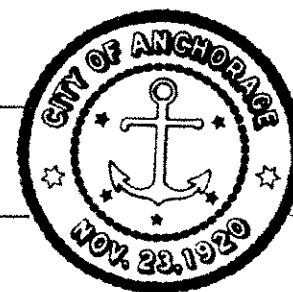


ANNUAL BUDGET

DISTRICT COURT



ANCHORAGE MUNICIPAL DIVISION

DEPARTMENT MUNICIPAL COURT				DEPARTMENT SUMMARY 1264			PAGE C-73
DIVISIONS	1966 ACTUAL	1967 ACTUAL	1968 ACTUAL	1969 REVISED BUDGET	1970		
					REQUEST	RECOMMEND.	APPROVED
Administrative	50,667	94,360	125,066	90,140	96,300	88,550	88,450
Service Section				48,540	55,150	75,020	74,870
TOTAL	50,667	94,360	125,066	138,680	151,450	163,570	163,320

DEPARTMENT MUNICIPAL COURT				DEPARTMENT SUMMARY 1264			PAGE C-73
DIVISIONS	1966 ACTUAL	1967 ACTUAL	1968 ACTUAL	1969 REVISED BUDGET	1970		
					REQUEST	RECOMMEND.	APPROVED
Administrative	50,667	94,360	125,066	90,140	96,300	88,550	88,450
Service Section				48,540	55,150	75,020	74,870
TOTAL	50,667	94,360	125,066	138,680	151,450	163,570	163,320

CITY OF ANCHORAGE

DEPARTMENT	ACCOUNT TITLE	ACCOUNT NUMBER	SUMMARY	A	PAGE
MUNICIPAL COURT	ADMINISTRATIVE	1264.1			C-74

ACCOUNT SUMMARY

EXPENDITURE CLASSIFICATION	1966 ACTUAL	1967 ACTUAL	1968 ACTUAL	1969 REVISED BUDGET	1970		
					REQUEST	RECOMMEND	APPROVED
Personal Services	33,512	62,363	74,081	47,280	55,120	54,080	54,080
Contractual	14,696	19,551	44,906	34,400	39,080	32,370	32,270
Supplies	1,549	3,356	2,429	2,600	1,500	1,500	1,500
Other Costs	920	9,090	3,650	5,410			
Capital Outlay				450	600	600	600
	50,677	94,360	125,066	90,140	96,300	88,550	88,450
Less Interfund Charges	X	X	X	X	X	X	X
TOTAL	50,677	94,360	125,066	90,140	96,300	88,550	88,450

PROGRAM OUTLINE

Program operating smoothly as a direct result of capital improvements (including machinery and equipment) and more efficient procedures implemented in prior years. Nevertheless, the caseload and thus each staff members' workload, is on a constant increase. Requested improvements include replacement automobiles for court service officers, one new typewriter, and one new clerical employee.

PROGRAM HIGHLIGHTS

It is contemplated that in the Traffic Court phase of the Municipal Division, District Court's operation that a person who has received a moving violation citation will make only one court appearance, rather than two that are now required (i.e., at the arraignment session, and at a subsequent trial if the person wishes to contest the matter). This will improve service to the taxpayer.

CITY OF ANCHORAGE

DEPARTMENT		ACCOUNT TITLE		ACCOUNT NUMBER		DETAIL	B	PAGE
MUNICIPAL COURT		ADMINISTRATIVE		1264.1				C-75
CODE NO.	EXPENDITURE CLASSIFICATION	1968 ACTUAL	1969 REVISED BUDGET	1970				
				REQUEST	RECOMMEND	APPROVED		
	<u>PERSONAL SERVICES</u>							
110	Salaries	73,880	46,280	54,120	53,580	53,580		
120	Overtime	201	1,000	1,000	500	500		
	Total	74,081	47,280	55,120	54,080	54,080		
	<u>CONTRACTUAL</u>							
221	Duplicating		870	800	430	430		
222	Contracted Labor and Equipment	18,961	20,100	19,900	19,900	19,900		
241	Telephone, Telegraph, Switchboard	2,164	1,950	2,000	2,000	2,000		
253	Liability & Workmen's Compensation		450	520	520	520		
254	Retirement Plans		2,338	1,780	1,780	1,780		
255	Life Insurance	4,895	145	70	70	70		
256	Medical Insurance		20	180	180	180		
257	Social Security		227	2,460	2,460	2,460		
271	City Owned Vehicles or Equipment	2,301						
274	Space Rental-City Building	16,184	7,900	8,690	3,250	3,150		
281	Repairs & Maintenance	275	200	380	480	480		
291	Travel			2,000	1,000	1,000		
292	Dues & Subscriptions	126	200	300	300	300		
	Total	44,906	34,400	39,080	32,370	32,270		
	<u>SUPPLIES</u>							
311	Materials	347						
313	Office Supplies, Postage	2,082	2,600	1,500	1,500	1,500		
	Total	2,429	2,600	1,500	1,500	1,500		
	<u>OTHER CHARGES</u>							
432	Contributions to Garage Fund							
462	Data Processing Development		5,410					
	Total		5,410					
	<u>CAPITAL</u>							
605	Machinery & Equipment	3,650	450	600	600	600		
	Total Operating Budget	125,066	90,140	96,300	88,550	88,450		

CITY OF ANCHORAGE

DEPARTMENT	ACCOUNT TITLE	ACCOUNT NUMBER	COMMENTARY	D	PAGE
MUNICIPAL COURT	ADMINISTRATIVE	1264.1			C-77

		Department Request	Manager Recommended	Council Approved
.222	<u>CONTRACTED LABOR AND EQUIPMENT</u>			
	Judges Salary	19,000	19,000	19,000
	Xerox Rental	900	900	900
		<u>19,900</u>	<u>19,900</u>	<u>19,900</u>
.241	<u>TELEPHONE, TELEGRAPH AND SWITCHBOARD</u>			
	Telephone and Switchboard	1,070	1,070	1,070
	Tolls and Telegrams	930	930	930
		<u>2,000</u>	<u>2,000</u>	<u>2,000</u>
.281	<u>REPAIRS AND MAINTENANCE</u>			
	Share of Re-roofing		100	100
	7 IBM Typewriters - \$47	330	330	330
	Cash Register and Others	50	50	50
		<u>380</u>	<u>480</u>	<u>480</u>
.291	<u>TRAVEL</u>	2,000	1,000	1,000
	1. National Conference of Traffic Court Administration			
	2. Judicial Conference on Criminal Law			
.292	<u>DUES AND SUBSCRIPTIONS</u>			
	1. Code of Ordinances (R. Wayne Stevens Law Books)	40	40	40
	2. Criminal Law Bulletin	24	24	24
	3. Alaska Law Journal	12	12	12
	4. North American Judges Association	30	30	30
	5. Alaska Bar Association	170	170	170
	6. Miscellaneous Literature and Publications	24	24	24
		<u>300</u>	<u>300</u>	<u>300</u>

CITY OF ANCHORAGE

DEPARTMENT	ACCOUNT TITLE	ACCOUNT NUMBER	COMMENTARY	D	PAGE
MUNICIPAL COURT	ADMINISTRATIVE	1264.1			C-78
			<u>Department Request</u>	<u>Manager Recommended</u>	<u>Council Approved</u>
.605 <u>MACHINERY AND EQUIPMENT</u>					
	Desk		150	150	150
	Typewriter		<u>450</u>	<u>450</u>	<u>450</u>
			600	600	600

CITY OF ANCHORAGE

DEPARTMENT	ACCOUNT TITLE	ACCOUNT NUMBER	COMMENTARY	D	PAGE
MUNICIPAL COURT	ADMINISTRATIVE	1264.1			C-79

The caseload of the District Court, Anchorage Municipal Division has been constantly increasing from approximately 12,000 filed cases in 1966 to more than 15,000 in calendar 1968. It is projected that nearly 17,000 cases will have been filed by the end of 1969 and 18,000 to 19,000 is not unrealistic for 1970. The total revenue generated to the City's General Fund from Court operations amounted to \$345,405.65 in 1968, and it is expected to equal or exceed that figure in 1969. (For additional figures, see Commentary page for Service Section as to gross revenue generated by the operation of collections for non-moving traffic violations).

With that kind of caseload projected, it is noted that each staff member is now working at full capacity and often overtime is required in order to finish each day's job. Another clerical person would help reduce each individual's workload to a more reasonable standard and might help avoid the overtime figure that will have to be sought in a quarterly budget revision for the last quarter of 1969.




The Court Bailiff is paid at a low rate and must supply his own uniforms which involves custom-made shirts at a cost of about \$18 per shirt and \$30 for trousers. This justifies the \$150 annual uniform allowance requested for the Bailiff.

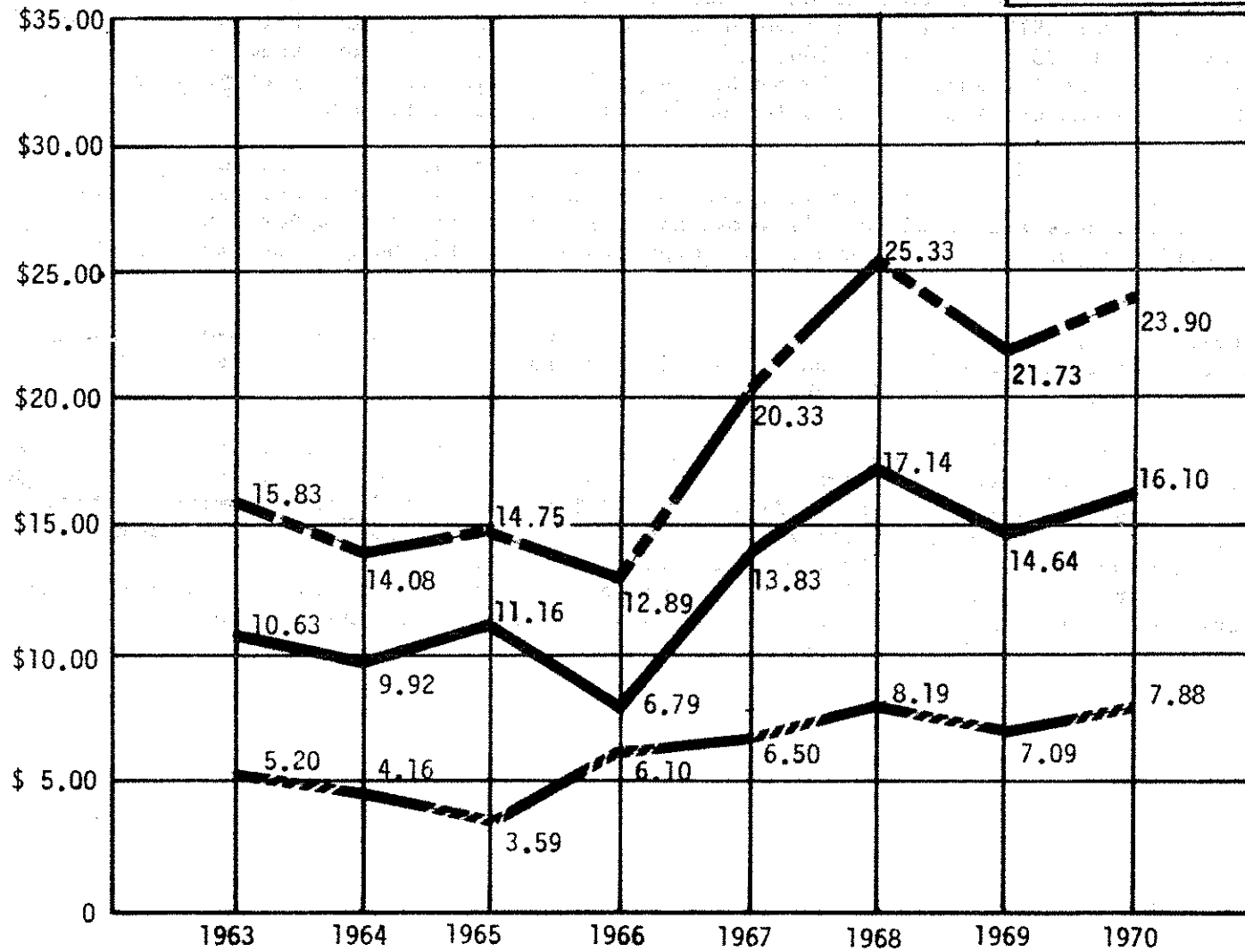
The sum requested for travel for the District Judge is predicated on the premise that there will be no Traffic Court Conference in Alaska during 1970, the prior such conference held in Anchorage being in 1967. However, the American Bar Associations' Traffic Court Program Committee schedules regional conferences in the other 49 states from time to time. With somewhat more than half the cases filed stemming from traffic situations, it would be of value for the District Judge to attend one such conference during 1970. Also, it would be helpful if he could attend one of the judicial conferences on criminal law (non-traffic matters) to be scheduled in 1970.

DISTRICT COURT ANCHORAGE MUNICIPAL DIVISION

C-80

1264.1

REVENUE PER CASE 
NET REVENUE PER CASE 
COST PER CASE 

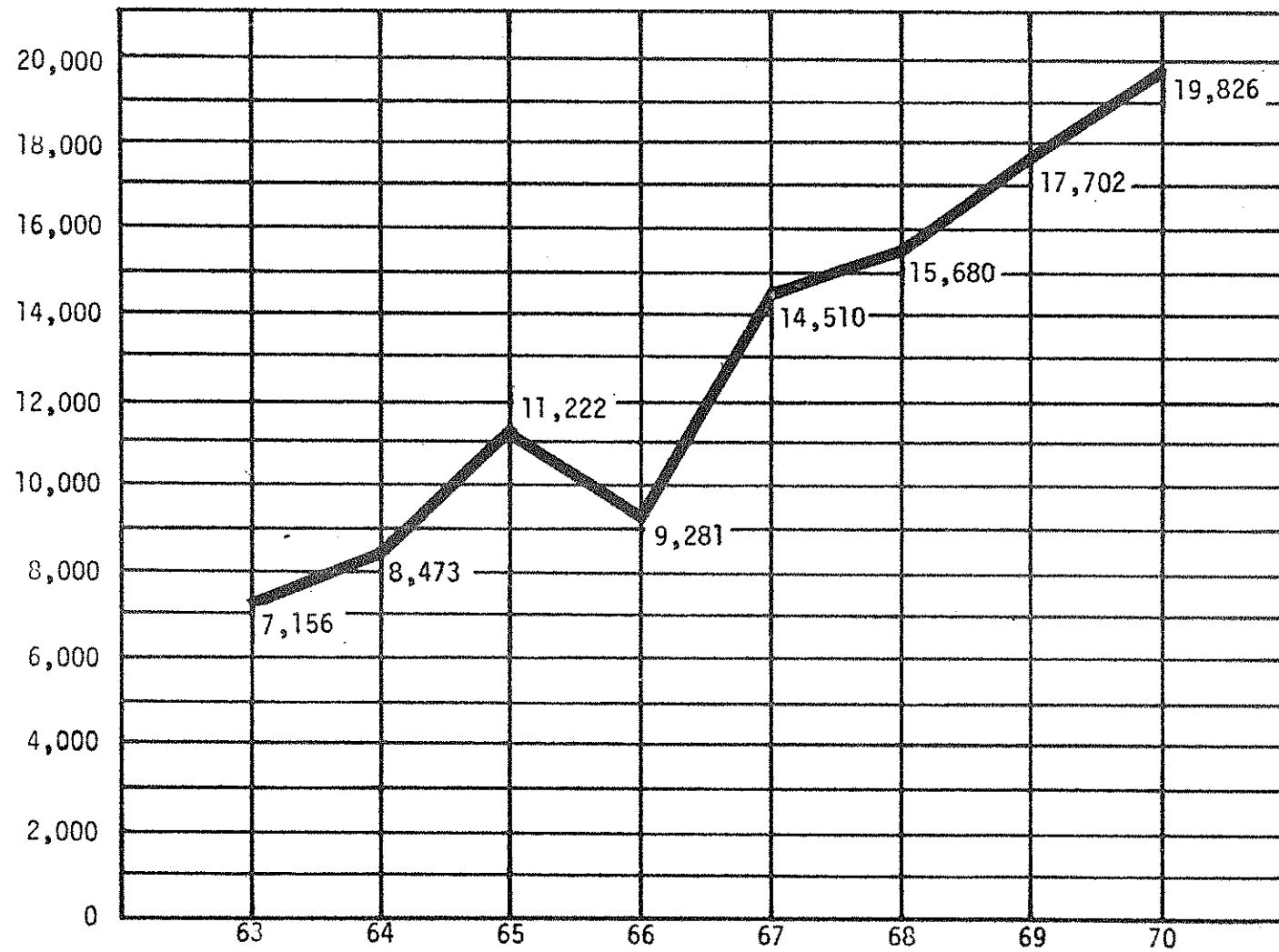


DISTRICT COURT
ANCHORAGE MUNICIPAL DIVISION

1264.1

C-81

CASELOAD INCREASE



CITY OF ANCHORAGE

DEPARTMENT	ACCOUNT TITLE	ACCOUNT NUMBER	SUMMARY	A	PAGE
MUNICIPAL COURT	SERVICE SECTION	1264.2			C-82

ACCOUNT SUMMARY

EXPENDITURE CLASSIFICATION	1966 ACTUAL	1967 ACTUAL	1968 ACTUAL	1969 REVISED BUDGET	1970		
					REQUEST	RECOMMEND	APPROVED
Personal Services	No Sectional Breakdown in Municipal Court until 1969			38,920	40,110	48,290	48,290
Contractual				8,220	13,590	18,000	17,850
Supplies				1,400	1,000	3,280	3,280
Other Costs					450	5,000	5,000
Capital Outlay						450	450
				48,540	55,150	75,020	74,870
Less Interfund Charges	()	()	())
TOTAL				48,540	55,150	75,020	74,870

PROGRAM OUTLINE

The program for 1970 is similar to that of 1969, with some changes having occurred in 1969, primarily in that the Service Section now serves all court process, including summonses and bench warrants. This frees members of the Anchorage Police Department to devote more time to police work instead of serving court process, as the APD had been doing until March of 1969.

PROGRAM HIGHLIGHTS

Continued progress towards faster prosecution of Warrants for non-moving traffic violations, as well as all other court process.

CITY OF ANCHORAGE

DEPARTMENT		ACCOUNT TITLE	ACCOUNT NUMBER	DETAIL		B	PAGE
MUNICIPAL COURT		SERVICE SECTION	1264.2				C-83
CODE NO.	EXPENDITURE CLASSIFICATION	1968 ACTUAL	1969 REVISED BUDGET	1970			
				REQUEST	RECOMMEND	APPROVED	
	<u>PERSONAL SERVICES</u>						
110	Salaries		38,920	39,110	47,790	47,790	
120	Overtime			1,000	500	500	
	Total		38,920	40,110	48,290	48,290	
	<u>CONTRACTUAL</u>						
241	Telephone, Telegraph, Switchboard		50	1,000	1,000	1,000	
253	Liability & Workmen's Compensation		380	370	470	470	
254	Retirement Plans		1,995	3,910	4,370	4,370	
255	Life Insurance		120	120	150	150	
256	Medical Insurance		35	270	380	380	
257	Social Security		160	1,480	1,860	1,860	
271	City Owned Vehicles or Equipment		2,650	2,450	2,450	2,450	
274	Space Rental-City Building		2,630	2,890	6,500	6,350	
281	Repairs & Maintenance		200	100	320	320	
291	Travel			1,000	500	500	
	Total		8,220	13,590	18,000	17,850	
	<u>SUPPLIES</u>						
313	Office Supplies, Postage		1,400	1,000	3,280	3,280	
	Total		1,400	1,000	3,280	3,280	
	<u>OTHER CHARGE</u>						
432	Contribution to Garage Fund				5,000	5,000	
	<u>CAPITAL</u>						
605	Machinery & Equipment			450	450	450	
	Total		48,540	55,150	75,020	74,870	
501	<u>LESS CHARGES TO OTHERS</u>						
	Total Operating Budget		48,540	55,150	75,020	74,870	

DEPARTMENT		ACCOUNT TITLE		ACCOUNT NUMBER		PERSONNEL		C	PAGE
MUNICIPAL COURT		SERVICE SECTION		1264.2					C-84
CLASSIFICATION	RANGE AND STEP	SALARY RATE	EMPLOYEES CURRENT *BUDGET	1970					
				* REQUEST	* RECOMMEND		* APPROVED		
Investigator	21	742-902	3	3	31,658	3	31,658	3	31,658
Warrant Clerk	12	521-633	1	1	7,452	1	7,452	1	7,452
Bench - Warrant Service Officer	21	742-902						1	9,165
<u>Temporary</u> Bench-Warrant Service Officer	21	742-902				4	39,110	5	48,275
Less 1% Salary Savings						1	9,165 (483)	0	(483)

CITY OF ANCHORAGE

DEPARTMENT	ACCOUNT TITLE	ACCOUNT NUMBER	COMMENTARY	D	PAGE
MUNICIPAL COURT	SERVICE SECTION	1264.2			C-85
			Department Request	Manager Recommended	Council Approved
.241	<u>TELEPHONE, TELEGRAPH AND SWITCHBOARD</u>				
	Substantial increase in communications costs due to accelerated efforts in prosecuting violators who have left the Anchorage area.				
	Telephone and Switchboard	700		700	700
	Tolls and Telegrams	300		300	300
		<u>1,000</u>		<u>1,000</u>	<u>1,000</u>
.271	<u>CITY OWNED VEHICLES OR EQUIPMENT</u>				
	3 vehicles @ \$816 per year	2,450		2,450	2,450
.281	<u>REPAIRS AND MAINTENANCE</u>				
	Share of Reroofing			220	220
	1 IBM Typewriter	50		50	50
	3 Radios and Receivers	50		50	50
		<u>100</u>		<u>320</u>	<u>320</u>
.291	<u>TRAVEL</u>				
	Per diem costs for investigators while serving warrants to violators outside the Anchorage area.				
	<u>Kenai - Soldotna Area</u>				
	2 investigators, 2 trips each (20 days)				
	Hotel 15 @ 20 \$300				
	Per Diem 15 @ 20 <u>300</u>	600		300	300
	<u>Palmer Area</u>				
	2 investigators, 4 trips each (16 days)				
	Hotel 15 @ 8 \$120				
	Per Diem 15 @ 16 <u>240</u>	360		200	200
	Out-of-pocket expense - Gasoline costs	40		-0-	-0-
		<u>1,000</u>		<u>500</u>	<u>500</u>

CITY OF ANCHORAGE

DEPARTMENT	ACCOUNT TITLE	ACCOUNT NUMBER	COMMENTARY	D	PAGE
MUNICIPAL COURT	SERVICE SECTION	1264.2			C-86
			Department Request	Manager Recommended	Council Approved
.313	<u>OFFICE SUPPLIES, POSTAGE</u>				
	Miscellaneous	1,000	1,000	1,000	
	Parking Violations Notices		950	950	
	Parking Violations Warrants		1,330	1,330	
		1,000	3,280	3,280	
.432	<u>CONTRIBUTION TO GARAGE</u>				
	2 Sedans @ \$2,500 each		5,000	5,000	
.605	<u>MACHINERY AND EQUIPMENT</u>				
	Typewriter	450	450	450	