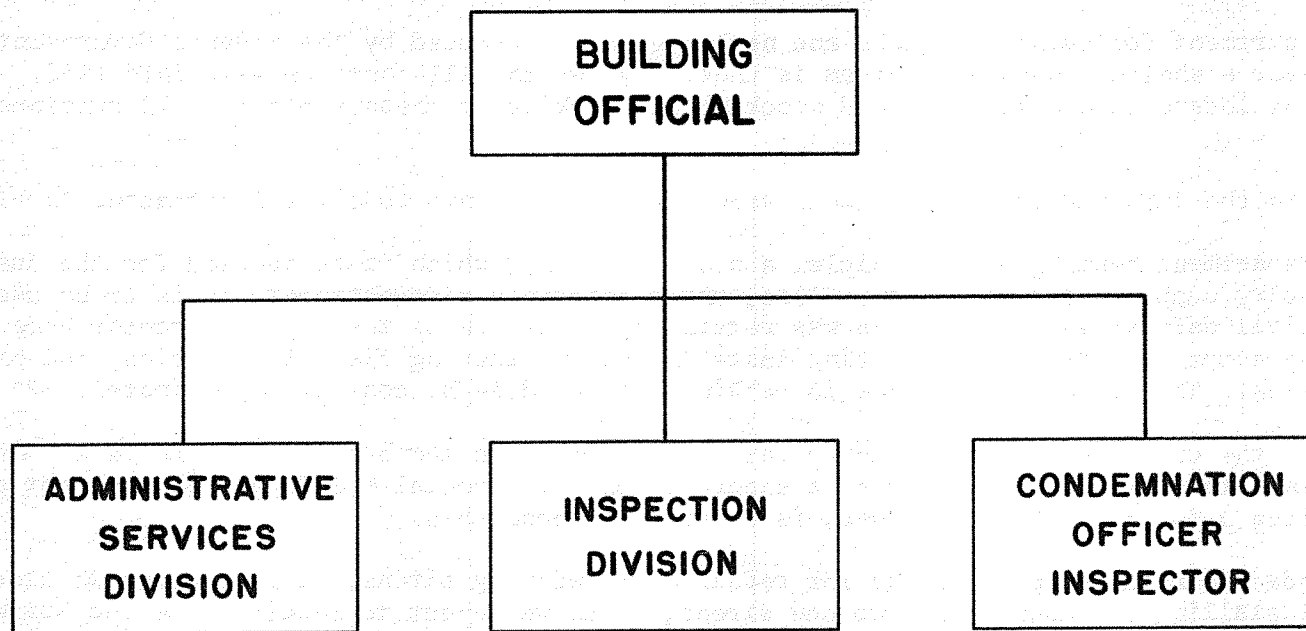


BUILDING DEPARTMENT



| DEPARTMENT Building | DIVISION | | ACCOUNT TITLE Bldg. Inspection | ACCOUNT NUMBER 1224 | SUMMARY | | |
|--|------------------------|------------------------|-----------------------------------|----------------------------|-------------------------------|-------------------------------|-----------------------------|
| CLASSIFICATION | ACTUAL COST 1962 | ACTUAL COST 1963 | ORIGINAL BUDGET 1964 | ADJUSTED BUDGET 1964 | DEPARTMENT REQUEST 1965 | MANAGER RECOMMENDS 1965 | COUNCIL APPROVES 1965 |
| Personal Services | 91,785 | 100,808 | 100,005 | 115,425 | 146,043 | 132,469 | 122,989 |
| Contractual | 8,024 | 8,932 | 8,650 | 10,650 | 19,580 | 18,580 | 17,800 |
| Supplies | 2,466 | 1,852 | 1,800 | 1,600 | 2,500 | 2,500 | 2,070 |
| Other Charge | | | | | | | |
| Capital—Equipment | | 834 | 150 | 150 | 150 | 150 | 150 |
| Total | 102,275 | 112,426 | 110,605 | 127,825 | 168,273 | 153,699 | 143,009 |
| Less Charges to Others | | | | | | | |
| Total Operating Budget | 102,275 | 112,426 | 110,605 | 127,825 | 168,273 | 153,699 | 143,009 |
| Capital—Public Improvements (See separate Section for Detail) | | | | | | | |
| Total Budget | 102,275 | 112,426 | 110,605 | 127,825 | 168,273 | 153,699 | 143,009 |

Highlights of Recommended 1965 Program

Safety Program - Continuance of enlarged building inspection program resulting from earthquake.

Major Cost Variations

Personal services increased due to additional Safety Inspector, two Building Inspectors and pay plan adjustment - - \$ 32,464

Structural engineering services planned 7,300

| DEPARTMENT Building | | DIVISION | ACCOUNT TITLE Building Inspection | ACCOUNT NUMBER 1224 | DETAIL | | |
|------------------------|----------------------------------|----------------------------|--------------------------------------|-------------------------------|-------------------------------|-----------------------------|--|
| CODE | CLASSIFICATION | ORIGINAL BUDGET 1964 | ADJUSTED BUDGET 1964 | DEPARTMENT REQUEST 1965 | MANAGER RECOMMENDS 1965 | COUNCIL APPROVED 1965 | |
| 11 | PERSONAL SERVICES | | | | | | |
| | Salaries | 99,005 | 113,805 | 143,297 | 129,723 | 120,243 | |
| 12 | Overtime | 1,000 | 1,620 | 2,746 | 2,746 | 2,746 | |
| | Total | 100,005 | 115,425 | 146,043 | 132,469 | 122,989 | |
| | CONTRACTUAL | | | | | | |
| 21 | Advertising | 50 | 50 | 50 | 50 | 50 | |
| 22 | Contracted Services | 300 | 550 | 7,850 | 7,850 | 7,850 | |
| 23 | Electricity and Water | | | | | | |
| 24 | Insurance and Employee Benefits | | | | | | |
| 25 | City Equipment Rental | 5,500 | 6,150 | 5,500 | 5,500 | 5,500 | |
| 26 | Other Rentals | 1,400 | 2,050 | 3,600 | 2,600 | 2,000 | |
| 27 | Repairs | 200 | 200 | 200 | 200 | 200 | |
| 28 | Telephone, Telegraph and Tolls | 1,000 | 1,000 | 1,200 | 1,200 | 1,200 | |
| 29 | Travel, Dues and Publications | 200 | 650 | 1,180 | 1,180 | 1,000 | |
| | Total | 8,650 | 10,650 | 19,580 | 18,580 | 17,800 | |
| | SUPPLIES | | | | | | |
| 31 | Building Materials | | | | | | |
| 32 | Food, Clothing and Medical | | | | | | |
| 33 | Gas, Oil, Grease and Motor Fuels | | | | | | |
| 34 | Heating Fuel | | | | | | |
| 35 | Household and Janitorial | | | | | | |
| 36 | Office Supplies | 400 | 700 | 700 | 700 | 700 | |
| 37 | Postage | 300 | 300 | 300 | 300 | 300 | |
| 38 | Printed Forms | 1,000 | 500 | 1,400 | 1,400 | 970 | |
| 39 | Small Tools | 100 | 100 | 100 | 100 | 100 | |
| | Total | 1,800 | 1,600 | 2,500 | 2,500 | 2,070 | |
| | OTHER CHARGES | | | | | | |
| 40 | | | | | | | |
| 41 | Total | | | | | | |
| 84 | CAPITAL— Equipment | 150 | 150 | 150 | 150 | 150 | |
| | Total | 110,605 | 127,825 | 168,273 | 153,699 | 143,009 | |
| | Less Charges to Others | | | | | | |
| | Total Operating Budget | 110,605 | 127,825 | 168,273 | 153,699 | 143,009 | |

| DEPARTMENT Building | | DIVISION | | ACCOUNT TITLE Bldg. Inspection | | ACCOUNT NUMBER 1224 | | PERSONNEL SCHEDULE | | | |
|---------------------------------------|--|----------|-----------|-----------------------------------|----------------------|-------------------------|---------|-------------------------|---------|-----------------------|---------|
| POSITION TITLE | | GRADE | PAY RANGE | ORIGINAL BUDGET 1964 | ADJUSTED BUDGET 1964 | DEPARTMENT REQUEST 1965 | | MANAGER RECOMMENDS 1965 | | COUNCIL APPROVED 1965 | |
| Building Official | | 31 | 1081-1265 | 1 | 1 | 1 | 14,134 | 1 | 14,134 | 1 | 14,134 |
| Asst. Bldg. Official/ Plan Checker | | 27 | 925-1081 | 1 | 1 | 1 | 12,240 | 1 | 12,240 | 1 | 12,240 |
| Condemnation Officer | | 26 | 889-1040 | 1 | 1 | 1 | 11,322 | 1 | 11,322 | 1 | 11,322 |
| Asst. Plan Checker | | 25 | 854-1000 | 0 | 0 | 1 | 10,248 | 0 | -0- | 0 | -0- |
| Building Inspector | | 23 | 790-925 | 2 | 4 | 4 | 40,071 | 4 | 40,071 | 4 | 40,071 |
| Electrical Inspector | | 23 | 790-925 | 1 | 1 | 1 | 9,542 | 1 | 9,542 | 1 | 9,542 |
| Plumbing Inspector | | 23 | 790-925 | 1 | 1 | 1 | 11,328 | 1 | 11,328 | 1 | 11,328 |
| Gas Inspector | | 23 | 790-925 | 1 | 1 | 1 | 11,100 | 1 | 11,100 | 1 | 11,100 |
| Clerk III's | | 13 | 534-624 | 2 | 2 | 2 | 13,832 | 2 | 13,832 | 2 | 13,832 |
| Safety Inspector | | 23 | 790-925 | 0 | 0 | 1 | 9,480 | 1 | 9,480 | 0 | -0- |
| | | | | 10 | 12 | 13 | 143,297 | 13 | 133,049 | 12 | 123,569 |
| Less Salary Savings @ 2-1/2% | | | | | | | | (3,326) | | | (3,326) |
| | | | | | | | | 129,723 | | | 120,243 |

CITY OF ANCHORAGE

| DEPARTMENT | DIVISION | ACCOUNT TITLE | ACCOUNT NUMBER | |
|------------|----------|------------------|----------------|--------------|
| Building | | Bldg. Inspection | 1224 | WORK PROGRAM |

Code 11 - Salaries

The work load has increased because of the earthquake with subsequent repair to existing structures and new construction to take the place of those structures which were destroyed or demolished. This increase is augmented by the normal growth of the City which has not diminished due to the quake, but has followed a normal pattern with an increase of new construction over preceding years.

An additional assistant plan checker has been requested at grade 25A for a total of \$10,248. The plan checker has to spend so much time with customers that he needs an assistant in order to keep up with the demands for prompt service. The City Manager recommends delay in filling this requested position due to the existing increase of three positions since January 1964.

A safety inspector has been added at grade 23A for a total of \$9,480. This man will inspect all jobs for safety hazards including City jobs and, in addition, will give short courses in safety to City departments. The augmentation of this activity should result in a savings to the City in insurance premiums and cash paid out by the City for accident claims.

Code 12 - Overtime

During the construction season, the electrical inspector has been budgeted in the past two years for overtime on Saturdays to take care of the work going on which cannot wait for inspection for two days due to the short construction season. In 1964, one building inspector has been utilized for the same reason. The work has been rotated among the four building inspectors and so overtime has been budgeted for both the electrical inspector and one building inspector for \$2,746, an increase of \$1,746 over the original 1964 budget. The City Manager recommends this based on needs and realistic program of meeting contractors' work schedules.

Code 21 - Advertising

Covers advertising for public hearings on code adoptions to come before the Board of Examiners and Appeals and Board of Gas Fitters' Examiners and Appeals. This item was budgeted as \$50 for 1964 -- no change.

Code 22 - Contracted Services

Structural calculations for seismic zone 3 have been required in the past but due to the quake, additional emphasis has been placed on this requirement. Sending plans out for check takes a considerable length of time, and due to the short building season the contractors demand immediate service. Therefore, structural engineer contractual services have been provided for in the budget for a six month period during 1965.

Code 25 - City Equipment Rental

Five vehicles are provided for in this request for a total amount of \$5,500.

| DEPARTMENT | DIVISION | ACCOUNT TITLE | ACCOUNT NUMBER | WORK PROGRAM |
|------------|----------|------------------|----------------|--------------|
| Building | | Bldg. Inspection | 1224 | |

Code 26 - Other Rentals

Six vehicles are provided for in this request for a total of \$3,600. The City Manager recommends a reduction to five based on total number of City vehicles available.

Code 27 - Repairs

\$200 has been budgeted for repairs to typewriters and office machines. No change from 1964 budget.

Code 28 - Telephone, Telegraph and Tolls

An increase of \$200 for a total of \$1,200 has been budgeted based on six months' expenditures.

Code 29 - Travel, Dues and Publications

A total of \$1,180 has been budgeted. This is for publication of the City of Anchorage Gas Code which will be coming back in the form of charges for each code book sold over the counter. Also included is attendance at the I.C.B.O. Convention and membership of the proposed Safety Inspector in the National Safety Council.

Code 36 - Office Supplies

This item has been increased from \$400 to \$700 based on a six month expenditure.

Code 37 - Postage: No change from 1964 figure of \$300

Code 38 - Printed Forms

This item has been increased from \$1,000 to \$1,400 based upon the need for film rental and safety posters during 1965 to support the proposed safety program.

Code 39 - Small Tools : No increase over 1964 budget

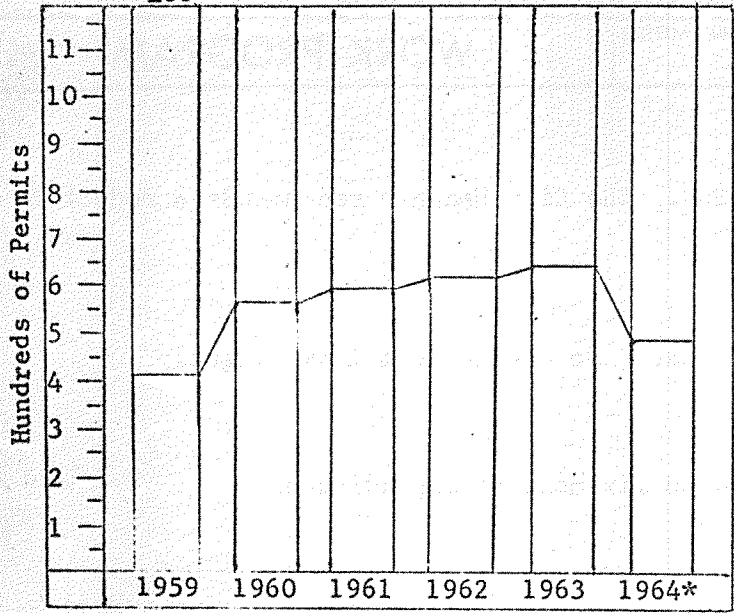
Code 84 - Capital - Equipment: \$150 has been budgeted for a filing cabinet.

A tabulation of the total cost of the proposed safety program during 1965 is as follows:

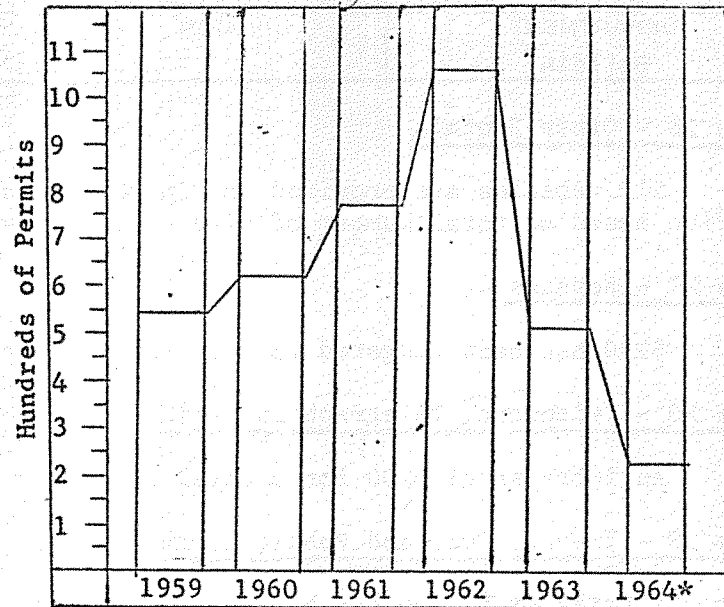
| | |
|---------------------------------------|-------------------|
| Safety Inspector Salary | \$ 9,480 |
| Membership in National Safety Council | 180 |
| Vehicle Rental | 600 |
| Safety phamplets and film rental | 430 |
| | <u> </u> |

\$10,690

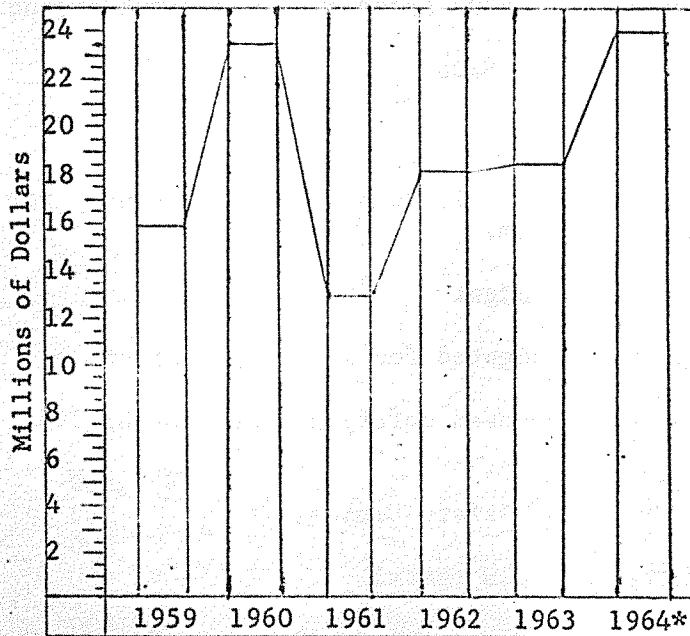
Council Review - Council deferred this new program pending initiation within staff of a Safety program designed to cover City functions only.



Number of Permits
WATER



Number of Permits
SEWER



Building - Valuation

*Estimates only