

Municipality of Anchorage

- Alaska –

2023

Planning
Department
Indirect Cost Proposal



Dave Bronson
Mayor

Sharon Lechner
Director (Acting), Office of Management & Budget

Planning Department

2023

INDIRECT COST PROPOSAL

Table of Contents

GENERAL INFORMATION

Certification of Indirect Costs.....	1
Introduction to Indirect Cost Proposal.....	2
Organizational Chart at 01/01/2021.....	3

INDIRECT COST RATE COMPUTATION

Planning Department Rate.....	4
-------------------------------	---

2021 FINANCIAL INFORMATION

Summary of Billing Units (Including Adjustments).....	5
Detail of Direct Expenditures.....	6
Detail of IGC Expenditures (Direct and Indirect).....	9
Detail of Billings (IGC) and Program Revenues.....	11
Detail of Charges from Central Services Plan IGCs.....	12
Detail of Non-Allowable Expense Adj - Within Unit.....	13

INTRAGOVERNMENTAL CHARGE-OUT METHODOLOGIES

190000 Planning Administration.....	14
-------------------------------------	----

Certificate of Indirect Costs

This is to certify that I have reviewed the indirect cost proposal submitted herewith and to the best of my knowledge and belief:

- (1) All costs included in this proposal to establish billing or final indirect cost rates for the period of January 1, 2023 through December 31, 2023 are allowable in accordance with the requirements of this Part and the Federal award(s) to which they apply.¹ Unallowable costs have been adjusted for in allocating costs as indicated in the cost allocation plan.
- (2) All costs included in this proposal are properly allocable to Federal awards on the basis of a beneficial or a causal relationship between the expenses incurred and the agreements to which they are allocated in accordance with applicable requirements. Further, the same costs that have been treated as indirect costs have not been claimed as direct costs. Similar types of costs have been accounted for consistently.

I declare the foregoing is true and correct

Municipality of Anchorage
Anchorage, Alaska

Wilks Consulting Services, Inc.
Anchorage, Alaska

(Signature)

(Signature)

Sharon Lechner
Director (Acting), Office of Management & Budget
Date of Execution: _____

William J. Wilks
Preparer
Date of Execution: _____

¹ Office of Management and Budget, 2CFR Chapter 1 and Chapter 11, Parts 200, 215, 220, 225, and 230. Uniform Administration Requirements, Cost Principles, and Audit Requirements for Federal Awards.

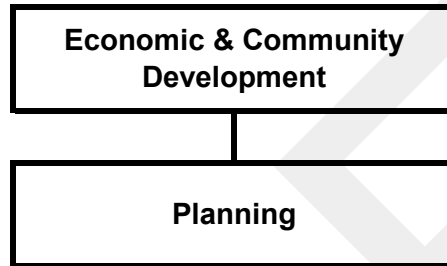
Introduction to Indirect Cost Rate Proposal

This document presents the Indirect Cost Rate Proposal for the Municipality of Anchorage for the period January 1, 2023 through December 31, 2023. This proposal supports our department's claim to indirect costs on grants and contracts with Federal and State government agencies. Costs presented in this proposal are based on calendar year 2021 actual expenses and organizational structure.

One indirect cost rate is developed for each department that charges indirect costs to grants. This percentage of indirect costs is computed based on total direct costs for the department.

Costs included in the indirect cost rates include Intragovernmental Charges (IGCs) from department and division administrative units. Indirect costs also include a share of the allocated central service units' costs as identified in the Municipality of Anchorage's 2023 Central Services Cost Allocation Plan. In addition, IGCs from central service units, department and division charging units have been adjusted to subtract costs that are unallowable according to guidelines presented in the Circular FTA C 5010.1E and the Office of Management and Budget guidance on Administrative Requirements, Cost Principles, and Audit Requirements for Federal Awards released December 26, 2013.

Planning



Indirect Cost Rate Computation



Planning Department

<u>Cost Item</u>	<u>Amount</u>
Actual Indirects	\$ 1,995,909
Allocation of Net Costs (over/underbilled costs) as Indirects from:	
Development Services	(14,370)
Total Indirects	\$ 1,981,539
Base (Allowable Net Directs)	\$ 5,351,356
2023 Rate	37.0%



Summary of Billing Units (Including Adjustments)
Municipality of Anchorage
Indirect Cost Rate Proposal
Summary of Costs
Using Results as of December 31, 2021

**Planning
Department**

Fund	Cost Center	Description	Direct Expenditures	IGC Expenditures (Direct and Indirect)	Total Direct and IGC Expenditures	Billings (IGC) and Program Revenues	Net Costs	Adjustment for Billings to Non-Chargeout Units	Net Costs, After Adj	Non-Allowable Expense Adj				Allowable IGCs Treated as Indirect Costs (Actual Indirects)	Allowable Net Directs
										Charges from Central Services Plan IGCs	% Not Allowable (from CSP)	From Central Services Plan	Within Unit	Allowable Net Costs, After Adj	
101000	190000	* Planning Administration	363,885	1,189,546	1,553,431	(1,553,431)	-	-	-	1,018,896	4.33%	44,107	106,838	(150,945)	-
101000	190200	Physical Planning	867,316	597,982	1,465,298	(1,100)	1,464,198	1,100	1,465,298	570,785	4.33%	24,709	44	1,440,545	888,363
101000	190300	Zoning & Platting	1,990,614	1,234,542	3,225,156	(756,485)	2,468,671	756,485	3,225,156	1,115,878	4.33%	48,305	16,729	3,160,122	2,028,986
101000	192060	Land Use Plan Review	307,605	258,654	566,259	(633,651)	(67,392)	633,651	566,259	250,479	4.33%	10,843	-	555,416	315,780
231800	190200	Physical Planning	3,472	-	3,472	-	3,472	-	3,472	-	4.33%	-	-	3,472	3,472
231801	124319	Disaster Recovery Planning	316	-	316	-	316	-	316	-	4.33%	-	-	316	316
231802	124319	Disaster Recovery Planning	29,772	610	30,382	(4,092)	26,290	4,092	30,382	-	4.33%	-	-	30,382	30,382
231900	190079	IGC-PlanAdmin-UnAlloc	385,244	-	385,244	(385,244)	-	385,244	385,244	-	4.33%	-	21,540	363,703	363,703
231900	190200	Physical Planning	1,687,416	131,750	1,819,166	(1,818,638)	529	1,818,638	1,819,166	-	4.33%	-	45,857	1,773,309	1,700,353
490000	190200	Physical Planning	20,000	-	20,000	(20,609)	(609)	20,609	20,000	-	4.33%	-	-	20,000	20,000
Total Planning Department			5,655,640	3,413,084	9,068,724	(5,173,250)	3,895,474	3,619,819	7,515,293	2,956,038		127,963	191,009	7,196,320	5,351,356

* Cost Centers allocate within department. To avoid double counting, calculations were adjusted to exclude: "Adjustment for Billings to Non-Chargeout units"; "Allowable IGCs Treated as Indirect Costs (Actual Indirects)" and "Allowable Directs"

ALLOCATIONS OF UNALLOWABLE COSTS FROM ADMIN UNITS

to be included in recipient Division Rate Calculations, if different from sender division within this department, in the "Allocation of Net Costs (over/underbilled costs) as Indirects from:"

Sender Cost Center	Amount (Over)/Under Billed	Distribution Percent	Recipient Department	Flow Thru
101000 190000 Planning Administration	(14,370)	9.52%	Outside Department	(14,370) Add to Indirect Cost Rate because recipients are outside department
101000 190000 Planning Administration	(136,575)	90.48%	Planning	- Already included in Indirect Cost Rate because recipients are within department.
	(150,945)	100.00%		(14,370) TOTAL Flow Thru

CSP Cat.	Department	Cost Center Description	Fiscal Year	Fund	Cost Center	Acct	Actuals
	Planning	Planning Administration	2021	101000	190000	501010	176,686.87
	Planning	Planning Administration	2021	101000	190000	501020	108.54
	Planning	Planning Administration	2021	101000	190000	501040	54,337.24
	Planning	Planning Administration	2021	101000	190000	501080	44,828.90
	Planning	Planning Administration	2021	101000	190000	501090	86.14
	Planning	Planning Administration	2021	101000	190000	501100	55,115.52
	Planning	Planning Administration	2021	101000	190000	501105	16,958.87
	Planning	Planning Administration	2021	101000	190000	501115	52.82
	Planning	Planning Administration	2021	101000	190000	501130	462.30
	Planning	Planning Administration	2021	101000	190000	501140	290.30
	Planning	Planning Administration	2021	101000	190000	511000	1,570.61
	Planning	Planning Administration	2021	101000	190000	511010	2,039.62
	Planning	Planning Administration	2021	101000	190000	511330	15.78
	Planning	Planning Administration	2021	101000	190000	511360	889.65
	Planning	Planning Administration	2021	101000	190000	530360	4,590.73
	Planning	Planning Administration	2021	101000	190000	530380	337.05
	Planning	Planning Administration	2021	101000	190000	540050	955.00
	Planning	Planning Administration	2021	101000	190000	540190	379.05
	Planning	Planning Administration	2021	101000	190000	540300	2,616.00
	Planning	Planning Administration	2021	101000	190000	570210	1,563.99
	Planning	Physical Planning	2021	101000	190200	501010	397,792.06
	Planning	Physical Planning	2021	101000	190200	501020	14,934.86
	Planning	Physical Planning	2021	101000	190200	501040	90,739.61
	Planning	Physical Planning	2021	101000	190200	501080	96,932.62
	Planning	Physical Planning	2021	101000	190200	501090	174.27
	Planning	Physical Planning	2021	101000	190200	501100	88,657.03
	Planning	Physical Planning	2021	101000	190200	501105	38,612.42
	Planning	Physical Planning	2021	101000	190200	501115	102.28
	Planning	Physical Planning	2021	101000	190200	501130	1,006.06
	Planning	Physical Planning	2021	101000	190200	501140	570.83
	Planning	Physical Planning	2021	101000	190200	501240	2.62
	Planning	Physical Planning	2021	101000	190200	511000	766.00
	Planning	Physical Planning	2021	101000	190200	511040	34.50
	Planning	Physical Planning	2021	101000	190200	511050	191.88
	Planning	Physical Planning	2021	101000	190200	511360	1,126.98
	Planning	Physical Planning	2021	101000	190200	520050	50.79
	Planning	Physical Planning	2021	101000	190200	520070	264.00
	Planning	Physical Planning	2021	101000	190200	530060	121.25
	Planning	Physical Planning	2021	101000	190200	530380	130,775.32
	Planning	Physical Planning	2021	101000	190200	540030	44.00
	Planning	Physical Planning	2021	101000	190200	540050	662.52
	Planning	Physical Planning	2021	101000	190200	540271	1,688.44
	Planning	Physical Planning	2021	101000	190200	540440	2,066.08
	Planning	Zoning & Platting	2021	101000	190300	501010	1,092,868.85
	Planning	Zoning & Platting	2021	101000	190300	501020	29,455.64
	Planning	Zoning & Platting	2021	101000	190300	501040	144,402.19
	Planning	Zoning & Platting	2021	101000	190300	501080	268,835.61
	Planning	Zoning & Platting	2021	101000	190300	501090	548.92
	Planning	Zoning & Platting	2021	101000	190300	501100	286,665.51
	Planning	Zoning & Platting	2021	101000	190300	501105	95,342.06
	Planning	Zoning & Platting	2021	101000	190300	501115	322.01
	Planning	Zoning & Platting	2021	101000	190300	501130	2,517.82
	Planning	Zoning & Platting	2021	101000	190300	501140	1,591.12
	Planning	Zoning & Platting	2021	101000	190300	501240	46.03
	Planning	Zoning & Platting	2021	101000	190300	511000	2,882.74
	Planning	Zoning & Platting	2021	101000	190300	511010	692.65
	Planning	Zoning & Platting	2021	101000	190300	511090	1,199.00
	Planning	Zoning & Platting	2021	101000	190300	511330	37.54
	Planning	Zoning & Platting	2021	101000	190300	511360	1,047.52

CSP Cat.	Department	Cost Center Description	Fiscal Year	Fund	Cost Center	Acct	Actuals
	Planning	Zoning & Platting	2021	101000	190300	511370	1,340.00
	Planning	Zoning & Platting	2021	101000	190300	530060	58.00
	Planning	Zoning & Platting	2021	101000	190300	530360	2,671.56
	Planning	Zoning & Platting	2021	101000	190300	530380	220.00
	Planning	Zoning & Platting	2021	101000	190300	540030	13,031.25
	Planning	Zoning & Platting	2021	101000	190300	540050	(75.00)
	Planning	Zoning & Platting	2021	101000	190300	540150	863.50
	Planning	Zoning & Platting	2021	101000	190300	540160	2,830.00
	Planning	Zoning & Platting	2021	101000	190300	540200	29,108.82
	Planning	Zoning & Platting	2021	101000	190300	540260	195.00
	Planning	Zoning & Platting	2021	101000	190300	540271	783.42
	Planning	Zoning & Platting	2021	101000	190300	540300	2,616.00
	Planning	Zoning & Platting	2021	101000	190300	540440	4,982.66
	Planning	Zoning & Platting	2021	101000	190300	570210	2,834.74
	Planning	Zoning & Platting	2021	101000	190300	590210	699.29
	Planning	Land Use Plan Review	2021	101000	192060	501010	170,077.15
	Planning	Land Use Plan Review	2021	101000	192060	501020	5,570.20
	Planning	Land Use Plan Review	2021	101000	192060	501040	24,047.97
	Planning	Land Use Plan Review	2021	101000	192060	501080	41,777.39
	Planning	Land Use Plan Review	2021	101000	192060	501090	81.60
	Planning	Land Use Plan Review	2021	101000	192060	501100	50,568.00
	Planning	Land Use Plan Review	2021	101000	192060	501105	14,487.65
	Planning	Land Use Plan Review	2021	101000	192060	501115	47.52
	Planning	Land Use Plan Review	2021	101000	192060	501130	393.91
	Planning	Land Use Plan Review	2021	101000	192060	501140	247.88
	Planning	Land Use Plan Review	2021	101000	192060	501240	3.83
	Planning	Land Use Plan Review	2021	101000	192060	540170	301.69
	Planning	Physical Planning	2021	231800	190200	530380	3,472.00
	Planning	Disaster Recovery Planning	2021	231801	124319	501100	316.05
	Planning	Disaster Recovery Planning	2021	231802	124319	501010	14,215.00
	Planning	Disaster Recovery Planning	2021	231802	124319	501080	3,211.06
	Planning	Disaster Recovery Planning	2021	231802	124319	501090	6.33
	Planning	Disaster Recovery Planning	2021	231802	124319	501100	3,926.06
	Planning	Disaster Recovery Planning	2021	231802	124319	501105	1,096.79
	Planning	Disaster Recovery Planning	2021	231802	124319	501115	3.61
	Planning	Disaster Recovery Planning	2021	231802	124319	501130	29.18
	Planning	Disaster Recovery Planning	2021	231802	124319	501140	20.92
	Planning	Disaster Recovery Planning	2021	231802	124319	511000	162.00
	Planning	Disaster Recovery Planning	2021	231802	124319	511030	7,101.00
	Planning	IGC-PlanAdmin-UnAlloc	2021	231900	190079	511360	210.00
	Planning	IGC-PlanAdmin-UnAlloc	2021	231900	190079	530380	106,050.00
	Planning	IGC-PlanAdmin-UnAlloc	2021	231900	190079	540200	6,000.00
	Planning	IGC-PlanAdmin-UnAlloc	2021	231900	190079	540260	31,720.00
	Planning	IGC-PlanAdmin-UnAlloc	2021	231900	190079	540271	204,777.00
	Planning	IGC-PlanAdmin-UnAlloc	2021	231900	190079	570210	21,540.27
	Planning	IGC-PlanAdmin-UnAlloc	2021	231900	190079	590210	14,946.40
	Planning	Physical Planning	2021	231900	190200	501010	795,730.57
	Planning	Physical Planning	2021	231900	190200	501020	11,903.36
	Planning	Physical Planning	2021	231900	190200	501040	55,611.46
	Planning	Physical Planning	2021	231900	190200	501080	187,659.96
	Planning	Physical Planning	2021	231900	190200	501090	391.48
	Planning	Physical Planning	2021	231900	190200	501100	218,067.94
	Planning	Physical Planning	2021	231900	190200	501105	64,886.27
	Planning	Physical Planning	2021	231900	190200	501115	220.05
	Planning	Physical Planning	2021	231900	190200	501130	1,733.61
	Planning	Physical Planning	2021	231900	190200	501140	1,101.58
	Planning	Physical Planning	2021	231900	190200	511000	11.98
	Planning	Physical Planning	2021	231900	190200	511090	1,281.50
	Planning	Physical Planning	2021	231900	190200	520040	2,367.38

CSP							
Cat.	Department	Cost Center Description	Fiscal Year	Fund	Cost Center	Acct	Actuals
	Planning	Physical Planning	2021	231900	190200	520050	352.13
	Planning	Physical Planning	2021	231900	190200	520060	2,896.74
	Planning	Physical Planning	2021	231900	190200	520070	600.00
	Planning	Physical Planning	2021	231900	190200	520080	9,880.00
	Planning	Physical Planning	2021	231900	190200	530360	1,811.65
	Planning	Physical Planning	2021	231900	190200	530380	275,561.65
	Planning	Physical Planning	2021	231900	190200	540040	2,329.02
	Planning	Physical Planning	2021	231900	190200	540050	1,885.25
	Planning	Physical Planning	2021	231900	190200	540120	3,149.63
	Planning	Physical Planning	2021	231900	190200	540150	42,707.61
	Planning	Physical Planning	2021	231900	190200	540170	488.88
	Planning	Physical Planning	2021	231900	190200	540260	1,009.11
	Planning	Physical Planning	2021	231900	190200	540271	3,777.18
	Planning	Physical Planning	2021	490000	190200	530380	20,000.00
							<u>5,655,640.30</u>

CSP Cat.	Department	Cost Center Description	Fiscal Year	Fund	Cost Center	Acct	Actuals
	Planning	Planning Administration	2021	101000	190000	600020	39,080.40
	Planning	Planning Administration	2021	101000	190000	600030	5,109.60
	Planning	Planning Administration	2021	101000	190000	600050	3,325.91
	Planning	Planning Administration	2021	101000	190000	600060	6,886.05
	Planning	Planning Administration	2021	101000	190000	600080	14,858.58
	Planning	Planning Administration	2021	101000	190000	600090	11,661.79
	Planning	Planning Administration	2021	101000	190000	600140	260.67
	Planning	Planning Administration	2021	101000	190000	600150	10,683.30
	Planning	Planning Administration	2021	101000	190000	600160	85,632.99
	Planning	Planning Administration	2021	101000	190000	600190	4,782.73
	Planning	Planning Administration	2021	101000	190000	600200	57,691.86
	Planning	Planning Administration	2021	101000	190000	600220	5,381.57
	Planning	Planning Administration	2021	101000	190000	600240	26,407.40
	Planning	Planning Administration	2021	101000	190000	600250	597.63
	Planning	Planning Administration	2021	101000	190000	600280	10,653.02
	Planning	Planning Administration	2021	101000	190000	600290	23,613.58
	Planning	Planning Administration	2021	101000	190000	600300	9,640.96
	Planning	Planning Administration	2021	101000	190000	600320	7,998.70
	Planning	Planning Administration	2021	101000	190000	600330	3,720.08
	Planning	Planning Administration	2021	101000	190000	600360	21,432.95
	Planning	Planning Administration	2021	101000	190000	600370	4,687.87
	Planning	Planning Administration	2021	101000	190000	600540	28,663.23
	Planning	Planning Administration	2021	101000	190000	600570	5,694.60
	Planning	Planning Administration	2021	101000	190000	600580	21,110.45
	Planning	Planning Administration	2021	101000	190000	600610	14,071.49
	Planning	Planning Administration	2021	101000	190000	600970	359,818.41
	Planning	Planning Administration	2021	101000	190000	601580	48,816.99
	Planning	Planning Administration	2021	101000	190000	601590	36,015.74
	Planning	Planning Administration	2021	101000	190000	601600	6,783.43
	Planning	Planning Administration	2021	101000	190000	601680	0.14
	Planning	Planning Administration	2021	101000	190000	601690	116,519.38
	Planning	Planning Administration	2021	101000	190000	601820	72,335.85
	Planning	Planning Administration	2021	101000	190000	601840	3,268.13
	Planning	Planning Administration	2021	101000	190000	601850	5,996.22
	Planning	Planning Administration	2021	101000	190000	601880	35,949.00
	Planning	Planning Administration	2021	101000	190000	601890	60,233.00
	Planning	Planning Administration	2021	101000	190000	601900	5,169.60
	Planning	Planning Administration	2021	101000	190000	601910	5,430.42
	Planning	Planning Administration	2021	101000	190000	601930	(2.43)
	Planning	Planning Administration	2021	101000	190000	605530	1,382.06
	Planning	Planning Administration	2021	101000	190000	605540	8,182.64
	Planning	Physical Planning	2021	101000	190200	600550	369,646.61
	Planning	Physical Planning	2021	101000	190200	601300	199,829.14
	Planning	Physical Planning	2021	101000	190200	601410	1,309.27
	Planning	Physical Planning	2021	101000	190200	601900	6,382.08
	Planning	Physical Planning	2021	101000	190200	605530	3,119.46
	Planning	Physical Planning	2021	101000	190200	605540	17,695.02
	Planning	Zoning & Platting	2021	101000	190300	600250	21,049.81
	Planning	Zoning & Platting	2021	101000	190300	600430	4,828.15
	Planning	Zoning & Platting	2021	101000	190300	600550	1,035,010.56
	Planning	Zoning & Platting	2021	101000	190300	601410	54,989.07
	Planning	Zoning & Platting	2021	101000	190300	601900	3,070.08
	Planning	Zoning & Platting	2021	101000	190300	602930	63,368.65
	Planning	Zoning & Platting	2021	101000	190300	605530	7,679.44
	Planning	Zoning & Platting	2021	101000	190300	605540	44,545.96
	Planning	Land Use Plan Review	2021	101000	192060	600430	5,734.68
	Planning	Land Use Plan Review	2021	101000	192060	600550	147,858.68
	Planning	Land Use Plan Review	2021	101000	192060	601410	96,885.52
	Planning	Land Use Plan Review	2021	101000	192060	605530	1,214.34

CSP			Fiscal		Cost		
Cat.	Department	Cost Center Description	Year	Fund	Center	Acct	Actuals
	Planning	Land Use Plan Review	2021	101000	192060	605540	6,960.54
	Planning	Disaster Recovery Planning	2021	231802	124319	605530	97.44
	Planning	Disaster Recovery Planning	2021	231802	124319	605540	512.68
	Planning	Physical Planning	2021	231900	190200	600230	11,280.49
	Planning	Physical Planning	2021	231900	190200	605530	11,393.93
	Planning	Physical Planning	2021	231900	190200	605540	32,819.03
	Planning	Physical Planning	2021	231900	190200	615200	76,257.00
							<u>3,413,083.62</u>

CSP			Fiscal		Cost		
Cat.	Department	Cost Center Description	Year	Fund	Center	Acct	Actuals
	Planning	Planning Administration	2021	101000	190000	408380	(915.12)
	Planning	Planning Administration	2021	101000	190000	600550	(1,552,515.85)
	Planning	Physical Planning	2021	101000	190200	406110	(450.00)
	Planning	Physical Planning	2021	101000	190200	408380	(650.42)
	Planning	Zoning & Platting	2021	101000	190300	404180	(12,220.00)
	Planning	Zoning & Platting	2021	101000	190300	404220	(21,287.50)
	Planning	Zoning & Platting	2021	101000	190300	406050	(275,019.38)
	Planning	Zoning & Platting	2021	101000	190300	406060	(443,412.85)
	Planning	Zoning & Platting	2021	101000	190300	406110	(2,820.00)
	Planning	Zoning & Platting	2021	101000	190300	406580	(589.90)
	Planning	Zoning & Platting	2021	101000	190300	408380	(1,135.67)
	Planning	Land Use Plan Review	2021	101000	192060	404090	(482,322.84)
	Planning	Land Use Plan Review	2021	101000	192060	404170	(135,116.38)
	Planning	Land Use Plan Review	2021	101000	192060	406030	(16,038.00)
	Planning	Land Use Plan Review	2021	101000	192060	408380	(173.61)
	Planning	Disaster Recovery Planning	2021	231802	124319	405150	(4,092.32)
	Planning	IGC-PlanAdmin-UnAlloc	2021	231900	190079	405150	(385,243.67)
	Planning	Physical Planning	2021	231900	190200	405010	(778.13)
	Planning	Physical Planning	2021	231900	190200	405150	(1,817,859.45)
	Planning	Physical Planning	2021	490000	190200	430030	(20,000.00)
	Planning	Physical Planning	2021	490000	190200	440010	(608.84)
							<u>(5,173,249.93)</u>

CSP Cat.	Department	Cost Center Description	Fiscal Year	Fund	Cost Center	Acct	Actuals
	Planning	Planning Administration	2021	101000	190000	600020	39,080.40
	Planning	Planning Administration	2021	101000	190000	600030	5,109.60
	Planning	Planning Administration	2021	101000	190000	600050	3,325.91
	Planning	Planning Administration	2021	101000	190000	600060	6,886.05
	Planning	Planning Administration	2021	101000	190000	600090	11,661.79
	Planning	Planning Administration	2021	101000	190000	600140	260.67
	Planning	Planning Administration	2021	101000	190000	600150	10,683.30
	Planning	Planning Administration	2021	101000	190000	600200	57,691.86
	Planning	Planning Administration	2021	101000	190000	600220	5,381.57
	Planning	Planning Administration	2021	101000	190000	600240	26,407.40
	Planning	Planning Administration	2021	101000	190000	600250	597.63
	Planning	Planning Administration	2021	101000	190000	600280	10,653.02
	Planning	Planning Administration	2021	101000	190000	600290	23,613.58
	Planning	Planning Administration	2021	101000	190000	600300	9,640.96
	Planning	Planning Administration	2021	101000	190000	600320	7,998.70
	Planning	Planning Administration	2021	101000	190000	600330	3,720.08
	Planning	Planning Administration	2021	101000	190000	600360	21,432.95
	Planning	Planning Administration	2021	101000	190000	600370	4,687.87
	Planning	Planning Administration	2021	101000	190000	600540	28,663.23
	Planning	Planning Administration	2021	101000	190000	600570	5,694.60
	Planning	Planning Administration	2021	101000	190000	600580	21,110.45
	Planning	Planning Administration	2021	101000	190000	600610	14,071.49
	Planning	Planning Administration	2021	101000	190000	600970	359,818.41
	Planning	Planning Administration	2021	101000	190000	601580	48,816.99
	Planning	Planning Administration	2021	101000	190000	601590	36,015.74
	Planning	Planning Administration	2021	101000	190000	601600	6,783.43
	Planning	Planning Administration	2021	101000	190000	601680	0.14
	Planning	Planning Administration	2021	101000	190000	601690	116,519.38
	Planning	Planning Administration	2021	101000	190000	601820	72,335.85
	Planning	Planning Administration	2021	101000	190000	601890	60,233.00
	Planning	Physical Planning	2021	101000	190200	600550	369,646.61
	Planning	Physical Planning	2021	101000	190200	601300	199,829.14
	Planning	Physical Planning	2021	101000	190200	601410	1,309.27
	Planning	Zoning & Platting	2021	101000	190300	600250	21,049.81
	Planning	Zoning & Platting	2021	101000	190300	600430	4,828.15
	Planning	Zoning & Platting	2021	101000	190300	600550	1,035,010.56
	Planning	Zoning & Platting	2021	101000	190300	601410	54,989.07
	Planning	Land Use Plan Review	2021	101000	192060	600430	5,734.68
	Planning	Land Use Plan Review	2021	101000	192060	600550	147,858.68
	Planning	Land Use Plan Review	2021	101000	192060	601410	96,885.52
							<u>2,956,037.54</u>

CSP							
Cat.	Department	Cost Center Description	Fiscal Year	Fund	Cost Center	Acct	Actuals
	Planning	Planning Administration	2021	101000	190000	570210	1,563.99
	Planning	Planning Administration	2021	101000	190000	600080	14,858.58
	Planning	Planning Administration	2021	101000	190000	600160	85,632.99
	Planning	Planning Administration	2021	101000	190000	600190	4,782.73
	Planning	Physical Planning	2021	101000	190200	540030	44.00
	Planning	Zoning & Platting	2021	101000	190300	540030	13,031.25
	Planning	Zoning & Platting	2021	101000	190300	540150	863.50
	Planning	Zoning & Platting	2021	101000	190300	570210	2,834.74
	Planning	IGC-PlanAdmin-UnAlloc	2021	231900	190079	570210	21,540.27
	Planning	Physical Planning	2021	231900	190200	540120	3,149.63
	Planning	Physical Planning	2021	231900	190200	540150	42,707.61
							<u>191,009.29</u>



Municipality of Anchorage

Intragovernmental Charges Methodologies

Department: Planning

Contact: Michelle McNulty

Fund: 101000

Telephone: 343-7901

Cost Pool (Cost Center / Name): 190000 / Planning Administration

Services Provided: Houses the department director, key managers, and administrative staff that directs and supports work by all groups in the department. Additionally, most central services costs for this department are collected in this pool. Included as a department in AMC 3.20.

Charge-Out Methodology: Allocation of cost pool is based on the ratio of current year budgeted position counts for each recipient cost center to total current year budgeted position counts for all recipient cost centers.

Allocation Factor:

Month-end automated calculation