

Municipality of Anchorage

- Alaska –

2023

Health

Department

Indirect Cost Proposal



Dave Bronson

Mayor

Sharon Lechner

Director (Acting), Office of Management & Budget

Health Department
2023
INDIRECT COST PROPOSAL

Table of Contents

GENERAL INFORMATION

Certification of Indirect Costs.....	1
Introduction to Indirect Cost Proposal.....	2
Organizational Chart at 01/01/2021.....	3

INDIRECT COST RATE COMPUTATION

Health Department Rate.....	4
-----------------------------	---

2021 FINANCIAL INFORMATION

Summary of Billing Units (Including Adjustments).....	5
Detail of Direct Expenditures.....	7
Detail of IGC Expenditures (Direct and Indirect).....	19
Detail of Billings (IGC) and Program Revenues.....	22
Detail of Charges from Central Services Plan IGCs.....	24
Detail of Non-Allowable Expense Adj - Within Unit.....	25

INTRAGOVERNMENTAL CHARGE-OUT METHODOLOGIES

The Health & Human Services department does not allocate out costs

Certificate of Indirect Costs

This is to certify that I have reviewed the indirect cost proposal submitted herewith and to the best of my knowledge and belief:

- (1) All costs included in this proposal to establish billing or final indirect cost rates for the period of January 1, 2023 through December 31, 2023 are allowable in accordance with the requirements of this Part and the Federal award(s) to which they apply.¹ Unallowable costs have been adjusted for in allocating costs as indicated in the cost allocation plan.
- (2) All costs included in this proposal are properly allocable to Federal awards on the basis of a beneficial or a causal relationship between the expenses incurred and the agreements to which they are allocated in accordance with applicable requirements. Further, the same costs that have been treated as indirect costs have not been claimed as direct costs. Similar types of costs have been accounted for consistently.

I declare the foregoing is true and correct.

Municipality of Anchorage
Anchorage, Alaska

Wilks Consulting Services, Inc.
Anchorage, Alaska

(Signature)

Sharon Lechner
Director (Acting), Office of Management & Budget
Date of Execution: _____

(Signature)

William J. Wilks
Preparer
Date of Execution: _____

¹ Office of Management and Budget, 2CFR Chapter 1 and Chapter 11, Parts 200, 215, 220, 225, and 230. Uniform Administration Requirements, Cost Principles, and Audit Requirements for Federal Awards.

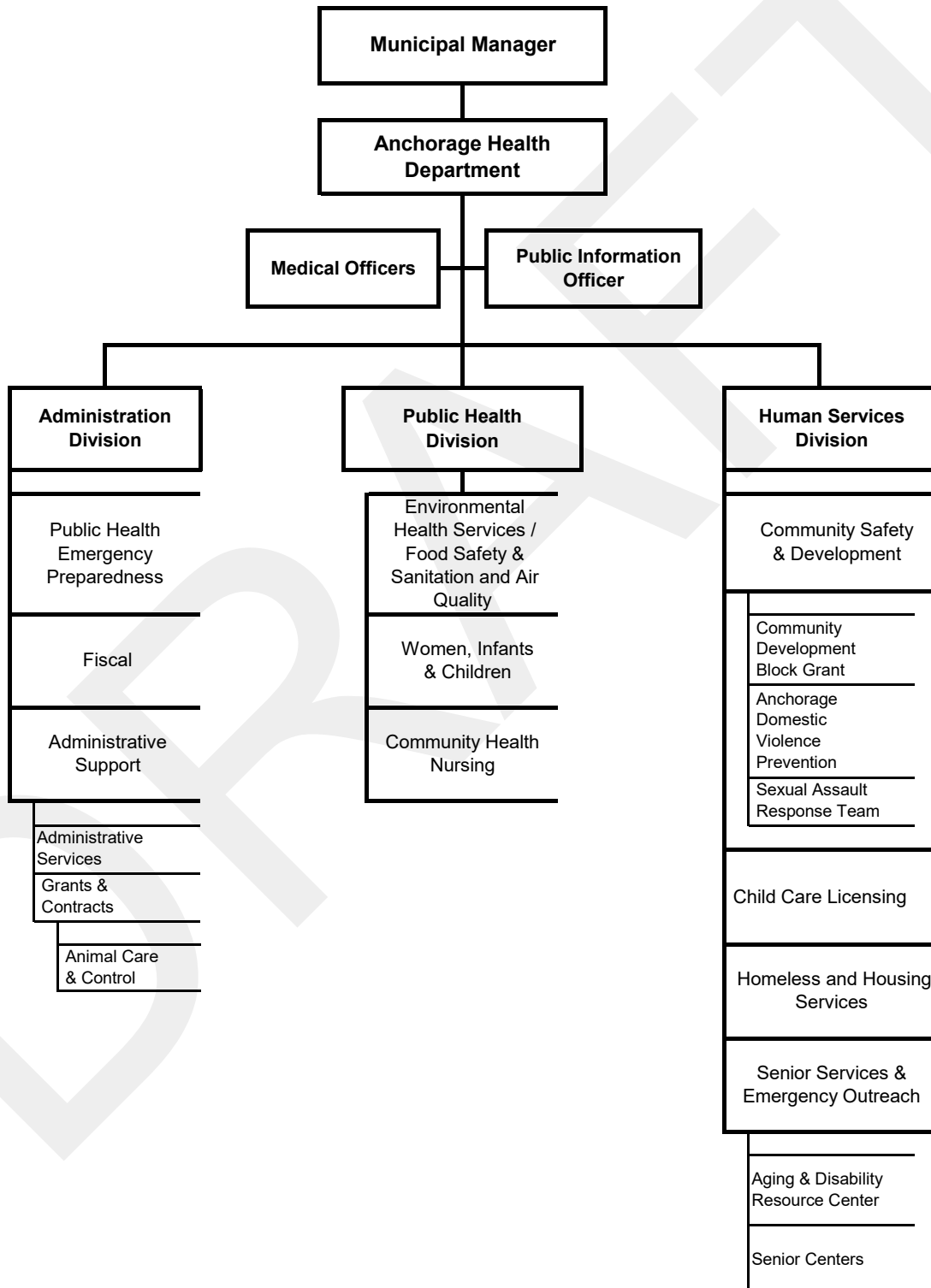
Introduction to Indirect Cost Rate Proposal

This document presents the Indirect Cost Rate Proposal for the Municipality of Anchorage for the period January 1, 2023 through December 31, 2023. This proposal supports our department's claim to indirect costs on grants and contracts with Federal and State government agencies. Costs presented in this proposal are based on calendar year 2021 actual expenses and organizational structure.

One indirect cost rate is developed for each department that charges indirect costs to grants. This percentage of indirect costs is computed based on total direct costs for the department.

Costs included in the indirect cost rates include Intragovernmental Charges (IGCs) from department and division administrative units. Indirect costs also include a share of the allocated central service units' costs as identified in the Municipality of Anchorage's 2023 Central Services Cost Allocation Plan. In addition, IGCs from central service units, department and division charging units have been adjusted to subtract costs that are unallowable according to guidelines presented in the Circular FTA C 5010.1E and the Office of Management and Budget guidance on Administrative Requirements, Cost Principles, and Audit Requirements for Federal Awards released December 26, 2013.

Anchorage Health Department



Indirect Cost Rate Computation



**Health
Department**

<u>Cost Item</u>	<u>Amount</u>
Actual Indirects	\$ 3,909,826
Allocation of Net Costs (over/underbilled costs) as Indirects from:	
None	-
Total Indirects	\$ 3,909,826
Base (Allowable Net Directs)	\$ 36,771,451
2023 Rate	10.6%



Summary of Billing Units (Including Adjustments)
Municipality of Anchorage
Indirect Cost Rate Proposal
Summary of Costs
Using Results as of December 31, 2021

**Health
Department**

Non-Allowable Expense Adj																
Fund	Cost Center	Description	Direct Expenditures	IGC Expenditures (Direct and Indirect)	Total Direct and IGC Expenditures	Billings (IGC) and Program Revenues	Net Costs	Adjustment for Billings to Non Chargeout Units	Net Costs, After Adj	Charges from Central Services Plan IGCs	% Not Allowable (from CSP)	From Central Services Plan	Within Unit	Allowable Net Costs, After Adj	Allowable IGCs Treated as Indirect Costs (Actual Indirects)	Allowable Net Directs
101000	211000	AHD Director's Office	320,941	3,545,201	3,866,142	(449)	3,865,693	449	3,866,142	3,061,188	4.33%	132,515	305,055	3,428,572	3,094,885	333,686
101000	212000	Medical Director	142,841	2,176	145,018	(315)	144,703	315	145,018	-	4.33%	-	-	145,018	-	145,018
101000	215000	AHD Debt Service	16,955	-	16,955	-	16,955	-	16,955	-	4.33%	-	16,955	-	-	-
101000	221000	Administration Division Support	729,061	15,189	744,251	(635)	743,616	635	744,251	10,965	4.33%	475	1,682	742,095	10,491	731,604
101000	222000	AHD Fiscal Support	355,817	5,220	361,037	(115,298)	245,739	115,298	361,037	-	4.33%	-	1,920	359,117	-	359,117
101000	224000	AHD Grants and Contracts	851,213	26,445	877,657	(18,349)	859,309	18,349	877,657	-	4.33%	-	272,439	605,219	16,768	588,450
101000	225000	Animal Care & Control	2,272,552	1,463	2,274,014	(445,937)	1,828,077	445,937	2,274,014	1,463	4.33%	63	220	2,273,731	1,399	2,272,332
101000	232000	Public Health Division	169,635	10	169,646	(365)	169,281	365	169,646	8,010	4.33%	347	405	168,894	7,664	161,231
101000	233000	Senior Svcs & Emerg. Outreach	1,023,895	2,628	1,026,523	(728)	1,025,795	728	1,026,523	25	4.33%	1	-	1,026,522	24	1,026,498
101000	235000	Child Care Licensing	5,026,353	(32,121)	4,994,232	(41,464)	4,952,768	41,464	4,994,232	-	4.33%	-	5,018	4,989,214	-	4,989,214
101000	236000	Anchorage Safety Center/Patrol	2,088,368	435	2,088,803	(108)	2,088,695	108	2,088,803	-	4.33%	-	-	2,088,803	-	2,088,803
101000	238000	Women, Infants & Children	144,081	(5,550)	138,531	(112,757)	25,774	112,757	138,531	20,178	4.33%	873	-	137,658	19,304	118,353
101000	239000	Anchorage Domestic Violence Progra	276,210	844	277,054	(107)	276,947	107	277,054	-	4.33%	-	165,000	112,054	-	112,054
101000	240500	AHD Emergency Preparedness	133,334	2,052	135,385	-	135,385	-	135,385	-	4.33%	-	880	134,505	-	134,505
101000	241000	Human Services Division	324,925	(30,611)	294,315	(13,128)	281,186	13,128	294,315	16,510	4.33%	715	1,062	292,538	17,993	274,545
101000	242000	Community Safety & Development	2,428,590	15,658	2,444,248	(1,401)	2,442,847	1,401	2,444,248	-	4.33%	-	1,119,378	1,324,869	-	1,324,869
101000	243000	Health Information Mgmt	648	-	648	(224)	423	224	648	-	4.33%	-	-	648	-	648
101000	244000	Homelessness	941,335	2,760	944,095	-	944,095	-	944,095	-	4.33%	-	571,520	372,576	-	372,576
101000	245000	Disease Prevention & Control	-	-	-	(1,185)	(1,185)	1,185	-	-	4.33%	-	-	-	-	-
101000	246000	Community Health Nursing	770,340	(246,818)	523,522	(121,192)	402,330	121,192	523,522	28	4.33%	1	-	523,521	27	523,494
101000	256000	Environmental Health Services	1,378,407	52,287	1,430,694	(262,263)	1,168,432	262,263	1,430,694	32,732	4.33%	1,417	673	1,428,604	31,315	1,397,290
101000	272000	SART Program	349,577	-	349,577	-	349,577	-	349,577	-	4.33%	-	-	349,577	-	349,577
206000	244500	AHD Homelessness, MH & Substanc	293,520	4,432	297,952	-	297,952	-	297,952	-	4.33%	-	2,898	295,054	-	295,054
206000	244600	AHD Child Abuse/SADVP	2,955,392	2,109	2,957,500	-	2,957,500	-	2,957,500	1,575	4.33%	68	2,866,726	90,706	1,507	89,199
231800	224000	AHD Grants and Contracts	189,349	-	189,349	(242,982)	(53,633)	242,982	189,349	-	4.33%	-	189,349	-	-	-
231800	272000	SART Program	-	273	273	(273)	-	273	273	-	4.33%	-	-	273	261	12
231801	124309	Disaster Recovery HHS	(15,085)	(103)	(15,188)	-	(15,188)	-	(15,188)	-	4.33%	-	(5,106)	(10,082)	-	(10,082)
231802	124309	Disaster Recovery HHS	884,819	17,286	902,105	(51,556)	850,549	51,556	902,105	6,553	4.33%	284	6,534	895,288	6,269	889,019
231802	232000	Public Health Division	601	9	610	-	610	-	610	-	4.33%	-	-	610	-	610
231802	240500	AHD Emergency Preparedness	2,610	40	2,650	-	2,650	-	2,650	-	4.33%	-	-	2,650	-	2,650
231802	246000	Community Health Nursing	21,138	336	21,474	-	21,474	-	21,474	-	4.33%	-	-	21,474	-	21,474
231900	224000	AHD Grants and Contracts	594,448	19,901	614,349	(614,349)	-	614,349	614,349	-	4.33%	-	594,448	19,901	8,793	11,108
231900	233000	Senior Svcs & Emerg. Outreach	770,579	65,143	835,722	(836,962)	(1,240)	836,962	835,722	-	4.33%	-	10,830	824,892	15,991	808,901
231900	235000	Child Care Licensing	1,387,783	231,611	1,619,394	(1,619,394)	-	1,619,394	1,619,394	-	4.33%	-	-	1,619,394	71,162	1,548,232
231900	238000	Women, Infants & Children	1,395,049	258,370	1,653,419	(1,653,419)	-	1,653,419	1,653,419	2,537	4.33%	110	2,189	1,651,120	95,075	1,556,045
231900	240500	AHD Emergency Preparedness	13,046,197	69,525	13,115,722	(13,115,722)	-	13,115,722	13,115,722	-	4.33%	-	4,284,889	8,830,833	17,149	8,813,684
231900	241000	Human Services Division	36,474	-	36,474	(36,474)	-	36,474	36,474	-	4.33%	-	(3,150)	39,624	-	39,624
231900	242000	Community Safety & Development	766,059	18,325	784,384	(784,384)	-	784,384	784,384	-	4.33%	-	748,922	35,462	17,244	18,218
231900	246000	Community Health Nursing	2,735,464	535,194	3,270,658	(3,270,658)	-	3,270,658	3,270,658	72	4.33%	3	2,992	3,267,663	224,053	3,043,610
231900	256000	Environmental Health Services	245,279	22,241	267,520	(267,520)	-	267,520	267,520	-	4.33%	-	33,404	234,116	-	234,116
231900	272000	SART Program	12,383	-	12,383	(12,383)	-	12,383	12,383	-	4.33%	-	-	12,383	-	12,383
241800	233500	Homeless Information Systems	0	-	0	-	0	-	0	-	4.33%	-	-	0	-	0
241800	242000	Community Safety & Development	130,495	13,452	143,948	(124,460)	19,488	124,460	143,948	-	4.33%	-	133,701	10,246	12,877	(2,631)
241800	256000	Environmental Health Services	-	1,113	1,113	(673)	440	673	1,113	-	4.33%	-	-	1,113	1,065	48
241900	232000	Public Health Division	1,630,713	-	1,630,713	(1,630,288)	425	1,630,288	1,630,713	-	4.33%	-	1,630,713	-	-	-
241900	233500	Homeless Information Systems	(0)	-	(0)	-	-	(0)	(0)	-	4.33%	-	-	(0)	-	(0)
241900	235000	Child Care Licensing	355,644	-	355,644	(350,000)	5,644	350,000	355,644	-	4.33%	-	355,644	-	-	-
241900	242000	Community Safety & Development	4,648,707	240,524	4,889,230	(4,838,665)	50,565	4,838,665	4,889,230	-	4.33%	-	4,188,796	700,434	225,591	474,844
241900	256000	Environmental Health Services	13,136	202	13,338	(13,338)	-	13,338	13,338	-	4.33%	-	-	13,338	-	13,338
261010	224000	AHD Grants and Contracts	245,165	-	245,165	-	245,165	-	245,165	-	4.33%	-	245,165	-	-	-
261010	225000	Animal Care & Control	8,016	183	8,199	(36,625)	(28,426)	36,625	8,199	-	4.33%	-	-	8,199	175	8,024
261010	244000	Homelessness	479,396	-	479,396	-	479,396	-	479,396	-	4.33%	-	479,396	-	-	-
401100	221000	Administration Division Support	1,433,268	14,049	1,447,317	(2,097,000)	(649,683)	2,097,000	1,447,317	181	4.33%	8	-	1,447,309	12,611	1,434,698
401100	233000	Senior Svcs & Emerg. Outreach	80,248	152	80,400	-	80,400	-	80,400	139	4.33%	6	-	80,394	133	80,261
401800	221000	Administration Division Support	7,493	55	7,548	(7,548)	-	7,548	7,548	-	4.33%	-	-	7,548	-	7,548
401800	225000	Animal Care & Control	77,585	18	77,603	(98,449)	(20,846)	98,449	77,603	-	4.33%	-	-	77,603	-	77,603
Total Health Department			54,177,004	4,871,708	59,048,712	(32,839,027)	26,209,685	32,839,027	59,048,712	3,162,156		136,886	18,230,549	40,681,277	3,909,826	36,771,451

2023 Indirect Cost Proposal

Health

* Cost Centers allocate within department. To avoid double counting, calculations were adjusted to exclude: "Adjustment for Billings to Non-Chargeout units"; "Allowable IGCs Treated as Indirect Costs (Actual Indirects)" and "Allowable Directs"

ALLOCATIONS of UNALLOWABLE COSTS FROM ADMIN UNITS

to be included in recipient Division Rate Calculations, if different from sender division within this department, in the "Allocation of Net Costs (over/underbilled costs) as Indirects from:"

Sender Cost Center	Amount (Over)/Under Billed	2021 Distribution Percent	Recipient Department	Flow Thru
No cost centers allocate within department	-		Does not allocate	

CSP Cat.	Department	Cost Center Description	Fiscal Year	Fund	Cost Center	Acct	Actuals
	Health	AHD Director's Office	2021	101000	211000	501010	185,115.93
	Health	AHD Director's Office	2021	101000	211000	501040	28,433.96
	Health	AHD Director's Office	2021	101000	211000	501080	42,063.53
	Health	AHD Director's Office	2021	101000	211000	501090	82.92
	Health	AHD Director's Office	2021	101000	211000	501100	48,633.43
	Health	AHD Director's Office	2021	101000	211000	501105	15,860.79
	Health	AHD Director's Office	2021	101000	211000	501115	49.06
	Health	AHD Director's Office	2021	101000	211000	501130	423.70
	Health	AHD Director's Office	2021	101000	211000	501140	277.62
	Health	Medical Director	2021	101000	212000	501010	67,625.67
	Health	Medical Director	2021	101000	212000	501040	43,834.29
	Health	Medical Director	2021	101000	212000	501080	15,271.74
	Health	Medical Director	2021	101000	212000	501090	19.55
	Health	Medical Director	2021	101000	212000	501100	8,728.75
	Health	Medical Director	2021	101000	212000	501105	6,853.02
	Health	Medical Director	2021	101000	212000	501115	11.88
	Health	Medical Director	2021	101000	212000	501130	177.24
	Health	Medical Director	2021	101000	212000	501140	84.36
	Health	Medical Director	2021	101000	212000	511000	186.37
	Health	Medical Director	2021	101000	212000	540170	48.60
	Health	AHD Debt Service	2021	101000	215000	580010	14,213.94
	Health	AHD Debt Service	2021	101000	215000	580020	2,733.16
	Health	AHD Debt Service	2021	101000	215000	580030	0.04
	Health	AHD Debt Service	2021	101000	215000	580140	7.77
	Health	Administration Division Support	2021	101000	221000	501010	368,713.43
	Health	Administration Division Support	2021	101000	221000	501020	2,613.74
	Health	Administration Division Support	2021	101000	221000	501040	71,312.84
	Health	Administration Division Support	2021	101000	221000	501080	86,194.21
	Health	Administration Division Support	2021	101000	221000	501090	201.10
	Health	Administration Division Support	2021	101000	221000	501100	126,485.09
	Health	Administration Division Support	2021	101000	221000	501105	31,854.94
	Health	Administration Division Support	2021	101000	221000	501115	118.53
	Health	Administration Division Support	2021	101000	221000	501130	883.80
	Health	Administration Division Support	2021	101000	221000	501140	529.79
	Health	Administration Division Support	2021	101000	221000	511000	2,409.22
	Health	Administration Division Support	2021	101000	221000	511010	5,020.90
	Health	Administration Division Support	2021	101000	221000	511050	565.60
	Health	Administration Division Support	2021	101000	221000	511090	1,324.28
	Health	Administration Division Support	2021	101000	221000	511330	153.79
	Health	Administration Division Support	2021	101000	221000	511340	280.18
	Health	Administration Division Support	2021	101000	221000	511380	2,851.08
	Health	Administration Division Support	2021	101000	221000	530060	118.00
	Health	Administration Division Support	2021	101000	221000	530360	1,190.00
	Health	Administration Division Support	2021	101000	221000	530377	1,157.28
	Health	Administration Division Support	2021	101000	221000	530380	225.00
	Health	Administration Division Support	2021	101000	221000	540040	379.00
	Health	Administration Division Support	2021	101000	221000	540050	521.96
	Health	Administration Division Support	2021	101000	221000	540150	114.16
	Health	Administration Division Support	2021	101000	221000	540170	11,554.25
	Health	Administration Division Support	2021	101000	221000	540271	1,566.84
	Health	Administration Division Support	2021	101000	221000	540640	8,096.86
	Health	Administration Division Support	2021	101000	221000	540650	10.00
	Health	Administration Division Support	2021	101000	221000	570210	1,567.36
	Health	Administration Division Support	2021	101000	221000	590210	1,048.23
	Health	AHD Fiscal Support	2021	101000	222000	501010	188,815.25
	Health	AHD Fiscal Support	2021	101000	222000	501020	7,703.82
	Health	AHD Fiscal Support	2021	101000	222000	501040	16,477.60
	Health	AHD Fiscal Support	2021	101000	222000	501080	46,695.79
	Health	AHD Fiscal Support	2021	101000	222000	501090	121.84

CSP			Fiscal		Cost		
Cat.	Department	Cost Center Description	Year	Fund	Center	Acct	Actuals
	Health	AHD Fiscal Support	2021	101000	222000	501100	72,992.32
	Health	AHD Fiscal Support	2021	101000	222000	501105	16,154.22
	Health	AHD Fiscal Support	2021	101000	222000	501115	71.93
	Health	AHD Fiscal Support	2021	101000	222000	501130	425.43
	Health	AHD Fiscal Support	2021	101000	222000	501140	267.01
	Health	AHD Fiscal Support	2021	101000	222000	511000	125.04
	Health	AHD Fiscal Support	2021	101000	222000	511010	449.77
	Health	AHD Fiscal Support	2021	101000	222000	511090	325.00
	Health	AHD Fiscal Support	2021	101000	222000	530060	36.75
	Health	AHD Fiscal Support	2021	101000	222000	540040	1,320.00
	Health	AHD Fiscal Support	2021	101000	222000	540170	686.38
	Health	AHD Fiscal Support	2021	101000	222000	540242	31.00
	Health	AHD Fiscal Support	2021	101000	222000	540640	276.67
	Health	AHD Fiscal Support	2021	101000	222000	540650	200.00
	Health	AHD Fiscal Support	2021	101000	222000	570210	1,919.63
	Health	AHD Fiscal Support	2021	101000	222000	590210	721.35
	Health	AHD Grants and Contracts	2021	101000	224000	501010	326,807.19
	Health	AHD Grants and Contracts	2021	101000	224000	501020	9,904.97
	Health	AHD Grants and Contracts	2021	101000	224000	501040	26,320.49
	Health	AHD Grants and Contracts	2021	101000	224000	501080	78,022.23
	Health	AHD Grants and Contracts	2021	101000	224000	501090	164.65
	Health	AHD Grants and Contracts	2021	101000	224000	501100	100,307.60
	Health	AHD Grants and Contracts	2021	101000	224000	501105	27,533.85
	Health	AHD Grants and Contracts	2021	101000	224000	501115	96.38
	Health	AHD Grants and Contracts	2021	101000	224000	501130	724.64
	Health	AHD Grants and Contracts	2021	101000	224000	501140	460.52
	Health	AHD Grants and Contracts	2021	101000	224000	511000	311.86
	Health	AHD Grants and Contracts	2021	101000	224000	511010	107.40
	Health	AHD Grants and Contracts	2021	101000	224000	530060	103.50
	Health	AHD Grants and Contracts	2021	101000	224000	540010	5,356.71
	Health	AHD Grants and Contracts	2021	101000	224000	540050	1,507.00
	Health	AHD Grants and Contracts	2021	101000	224000	540100	28,007.50
	Health	AHD Grants and Contracts	2021	101000	224000	540170	561.02
	Health	AHD Grants and Contracts	2021	101000	224000	570210	1,449.19
	Health	AHD Grants and Contracts	2021	101000	224000	580530	242,982.00
	Health	AHD Grants and Contracts	2021	101000	224000	590210	484.03
	Health	Animal Care & Control	2021	101000	225000	511000	30,725.00
	Health	Animal Care & Control	2021	101000	225000	530020	1,767.14
	Health	Animal Care & Control	2021	101000	225000	530380	2,220,733.78
	Health	Animal Care & Control	2021	101000	225000	540040	384.00
	Health	Animal Care & Control	2021	101000	225000	540170	6,519.00
	Health	Animal Care & Control	2021	101000	225000	540200	2,880.00
	Health	Animal Care & Control	2021	101000	225000	540260	548.58
	Health	Animal Care & Control	2021	101000	225000	540640	3,268.80
	Health	Animal Care & Control	2021	101000	225000	560010	5,165.00
	Health	Animal Care & Control	2021	101000	225000	580530	220.00
	Health	Animal Care & Control	2021	101000	225000	590210	340.39
	Health	Public Health Division	2021	101000	232000	501010	80,723.13
	Health	Public Health Division	2021	101000	232000	501040	15,314.69
	Health	Public Health Division	2021	101000	232000	501080	19,135.34
	Health	Public Health Division	2021	101000	232000	501090	35.70
	Health	Public Health Division	2021	101000	232000	501100	23,517.00
	Health	Public Health Division	2021	101000	232000	501105	7,240.57
	Health	Public Health Division	2021	101000	232000	501115	21.78
	Health	Public Health Division	2021	101000	232000	501130	195.44
	Health	Public Health Division	2021	101000	232000	501140	128.59
	Health	Public Health Division	2021	101000	232000	511000	289.25
	Health	Public Health Division	2021	101000	232000	511010	418.34
	Health	Public Health Division	2021	101000	232000	530020	90.10

CSP Cat.	Department	Cost Center Description	Fiscal Year	Fund	Cost Center	Acct	Actuals
	Health	Public Health Division	2021	101000	232000	530060	203.75
	Health	Public Health Division	2021	101000	232000	530380	15,750.00
	Health	Public Health Division	2021	101000	232000	540150	405.00
	Health	Public Health Division	2021	101000	232000	540170	6,165.76
	Health	Public Health Division	2021	101000	232000	540610	1.02
	Health	Senior Svcs & Emerg. Outreach	2021	101000	233000	501010	78,137.05
	Health	Senior Svcs & Emerg. Outreach	2021	101000	233000	501020	2,097.40
	Health	Senior Svcs & Emerg. Outreach	2021	101000	233000	501040	28,781.64
	Health	Senior Svcs & Emerg. Outreach	2021	101000	233000	501080	19,928.85
	Health	Senior Svcs & Emerg. Outreach	2021	101000	233000	501090	51.63
	Health	Senior Svcs & Emerg. Outreach	2021	101000	233000	501100	32,169.30
	Health	Senior Svcs & Emerg. Outreach	2021	101000	233000	501105	7,869.33
	Health	Senior Svcs & Emerg. Outreach	2021	101000	233000	501115	30.06
	Health	Senior Svcs & Emerg. Outreach	2021	101000	233000	501130	211.71
	Health	Senior Svcs & Emerg. Outreach	2021	101000	233000	501140	120.69
	Health	Senior Svcs & Emerg. Outreach	2021	101000	233000	511000	169.30
	Health	Senior Svcs & Emerg. Outreach	2021	101000	233000	511010	589.24
	Health	Senior Svcs & Emerg. Outreach	2021	101000	233000	511090	169.99
	Health	Senior Svcs & Emerg. Outreach	2021	101000	233000	530380	525,700.00
	Health	Senior Svcs & Emerg. Outreach	2021	101000	233000	540170	1,685.74
	Health	Senior Svcs & Emerg. Outreach	2021	101000	233000	540640	325,863.86
	Health	Senior Svcs & Emerg. Outreach	2021	101000	233000	590230	319.00
	Health	Child Care Licensing	2021	101000	235000	511000	7,680.17
	Health	Child Care Licensing	2021	101000	235000	511330	155.70
	Health	Child Care Licensing	2021	101000	235000	530060	78.00
	Health	Child Care Licensing	2021	101000	235000	530380	5,000,000.00
	Health	Child Care Licensing	2021	101000	235000	540040	(119.00)
	Health	Child Care Licensing	2021	101000	235000	540170	698.26
	Health	Child Care Licensing	2021	101000	235000	540300	5,232.00
	Health	Child Care Licensing	2021	101000	235000	570210	5,018.40
	Health	Child Care Licensing	2021	101000	235000	590210	7,609.40
	Health	Anchorage Safety Center/Patrol	2021	101000	236000	501010	16,381.25
	Health	Anchorage Safety Center/Patrol	2021	101000	236000	501020	840.50
	Health	Anchorage Safety Center/Patrol	2021	101000	236000	501040	731.20
	Health	Anchorage Safety Center/Patrol	2021	101000	236000	501080	3,898.50
	Health	Anchorage Safety Center/Patrol	2021	101000	236000	501090	13.44
	Health	Anchorage Safety Center/Patrol	2021	101000	236000	501100	8,557.77
	Health	Anchorage Safety Center/Patrol	2021	101000	236000	501105	1,309.50
	Health	Anchorage Safety Center/Patrol	2021	101000	236000	501115	7.78
	Health	Anchorage Safety Center/Patrol	2021	101000	236000	501130	35.43
	Health	Anchorage Safety Center/Patrol	2021	101000	236000	501140	20.90
	Health	Anchorage Safety Center/Patrol	2021	101000	236000	501240	5.38
	Health	Anchorage Safety Center/Patrol	2021	101000	236000	511000	7,895.53
	Health	Anchorage Safety Center/Patrol	2021	101000	236000	511010	348.44
	Health	Anchorage Safety Center/Patrol	2021	101000	236000	511050	8.00
	Health	Anchorage Safety Center/Patrol	2021	101000	236000	530360	235.16
	Health	Anchorage Safety Center/Patrol	2021	101000	236000	530380	2,008,349.23
	Health	Anchorage Safety Center/Patrol	2021	101000	236000	540040	200.00
	Health	Anchorage Safety Center/Patrol	2021	101000	236000	540050	250.00
	Health	Anchorage Safety Center/Patrol	2021	101000	236000	540170	6,701.56
	Health	Anchorage Safety Center/Patrol	2021	101000	236000	540271	622.32
	Health	Anchorage Safety Center/Patrol	2021	101000	236000	540640	28,079.88
	Health	Anchorage Safety Center/Patrol	2021	101000	236000	550080	2,349.00
	Health	Anchorage Safety Center/Patrol	2021	101000	236000	590210	1,527.16
	Health	Women, Infants & Children	2021	101000	238000	501010	64,273.92
	Health	Women, Infants & Children	2021	101000	238000	501020	2,473.14
	Health	Women, Infants & Children	2021	101000	238000	501040	34,806.62
	Health	Women, Infants & Children	2021	101000	238000	501080	15,725.90
	Health	Women, Infants & Children	2021	101000	238000	501090	31.12

CSP			Fiscal		Cost		
Cat.	Department	Cost Center Description	Year	Fund	Center	Acct	Actuals
	Health	Women, Infants & Children	2021	101000	238000	501100	19,037.45
	Health	Women, Infants & Children	2021	101000	238000	501105	7,364.65
	Health	Women, Infants & Children	2021	101000	238000	501115	17.38
	Health	Women, Infants & Children	2021	101000	238000	501130	194.16
	Health	Women, Infants & Children	2021	101000	238000	501140	88.65
	Health	Women, Infants & Children	2021	101000	238000	540220	67.62
	Health	Anchorage Domestic Violence F	2021	101000	239000	501010	57,159.27
	Health	Anchorage Domestic Violence F	2021	101000	239000	501020	991.19
	Health	Anchorage Domestic Violence F	2021	101000	239000	501040	5,079.30
	Health	Anchorage Domestic Violence F	2021	101000	239000	501080	13,441.00
	Health	Anchorage Domestic Violence F	2021	101000	239000	501090	48.46
	Health	Anchorage Domestic Violence F	2021	101000	239000	501100	29,379.43
	Health	Anchorage Domestic Violence F	2021	101000	239000	501105	4,552.77
	Health	Anchorage Domestic Violence F	2021	101000	239000	501115	27.19
	Health	Anchorage Domestic Violence F	2021	101000	239000	501130	124.16
	Health	Anchorage Domestic Violence F	2021	101000	239000	501140	81.25
	Health	Anchorage Domestic Violence F	2021	101000	239000	530060	26.00
	Health	Anchorage Domestic Violence F	2021	101000	239000	540110	165,000.00
	Health	Anchorage Domestic Violence F	2021	101000	239000	540170	97.20
	Health	Anchorage Domestic Violence F	2021	101000	239000	540242	202.59
	Health	AHD Emergency Preparedness	2021	101000	240500	501010	73,024.49
	Health	AHD Emergency Preparedness	2021	101000	240500	501020	1,834.45
	Health	AHD Emergency Preparedness	2021	101000	240500	501040	8,903.52
	Health	AHD Emergency Preparedness	2021	101000	240500	501080	17,666.13
	Health	AHD Emergency Preparedness	2021	101000	240500	501090	34.88
	Health	AHD Emergency Preparedness	2021	101000	240500	501100	22,790.64
	Health	AHD Emergency Preparedness	2021	101000	240500	501105	6,439.45
	Health	AHD Emergency Preparedness	2021	101000	240500	501115	21.21
	Health	AHD Emergency Preparedness	2021	101000	240500	501130	169.28
	Health	AHD Emergency Preparedness	2021	101000	240500	501140	112.57
	Health	AHD Emergency Preparedness	2021	101000	240500	511000	263.25
	Health	AHD Emergency Preparedness	2021	101000	240500	511010	420.98
	Health	AHD Emergency Preparedness	2021	101000	240500	511380	310.45
	Health	AHD Emergency Preparedness	2021	101000	240500	540040	50.00
	Health	AHD Emergency Preparedness	2021	101000	240500	540170	412.46
	Health	AHD Emergency Preparedness	2021	101000	240500	580530	880.00
	Health	Human Services Division	2021	101000	241000	501010	155,877.41
	Health	Human Services Division	2021	101000	241000	501020	3,218.80
	Health	Human Services Division	2021	101000	241000	501040	65,605.82
	Health	Human Services Division	2021	101000	241000	501080	36,284.54
	Health	Human Services Division	2021	101000	241000	501090	64.56
	Health	Human Services Division	2021	101000	241000	501100	40,663.89
	Health	Human Services Division	2021	101000	241000	501105	16,483.80
	Health	Human Services Division	2021	101000	241000	501115	37.98
	Health	Human Services Division	2021	101000	241000	501130	439.65
	Health	Human Services Division	2021	101000	241000	501140	218.83
	Health	Human Services Division	2021	101000	241000	511010	101.58
	Health	Human Services Division	2021	101000	241000	511330	810.43
	Health	Human Services Division	2021	101000	241000	530060	139.00
	Health	Human Services Division	2021	101000	241000	530360	1,255.23
	Health	Human Services Division	2021	101000	241000	530380	423.00
	Health	Human Services Division	2021	101000	241000	540150	789.35
	Health	Human Services Division	2021	101000	241000	540170	2,238.39
	Health	Human Services Division	2021	101000	241000	580530	273.00
	Health	Community Safety & Developme	2021	101000	242000	501010	587,818.56
	Health	Community Safety & Developme	2021	101000	242000	501020	16,248.96
	Health	Community Safety & Developme	2021	101000	242000	501040	64,420.81
	Health	Community Safety & Developme	2021	101000	242000	501080	139,520.02
	Health	Community Safety & Developme	2021	101000	242000	501090	337.89

CSP Cat.	Department	Cost Center Description	Fiscal Year	Fund	Cost Center	Acct	Actuals
	Health	Community Safety & Development	2021	101000	242000	501100	190,145.03
	Health	Community Safety & Development	2021	101000	242000	501105	49,265.54
	Health	Community Safety & Development	2021	101000	242000	501115	183.69
	Health	Community Safety & Development	2021	101000	242000	501130	1,312.57
	Health	Community Safety & Development	2021	101000	242000	501140	788.88
	Health	Community Safety & Development	2021	101000	242000	511000	41,490.41
	Health	Community Safety & Development	2021	101000	242000	530060	55.50
	Health	Community Safety & Development	2021	101000	242000	530360	23,386.29
	Health	Community Safety & Development	2021	101000	242000	530380	160,019.33
	Health	Community Safety & Development	2021	101000	242000	540040	2,250.00
	Health	Community Safety & Development	2021	101000	242000	540100	300,000.00
	Health	Community Safety & Development	2021	101000	242000	540170	706.38
	Health	Community Safety & Development	2021	101000	242000	540271	274.08
	Health	Community Safety & Development	2021	101000	242000	540610	1,416.75
	Health	Community Safety & Development	2021	101000	242000	540640	28,902.28
	Health	Community Safety & Development	2021	101000	242000	570210	1,396.36
	Health	Community Safety & Development	2021	101000	242000	580530	817,982.00
	Health	Community Safety & Development	2021	101000	242000	590210	668.31
	Health	Health Information Mgmt	2021	101000	243000	501040	647.68
	Health	Homelessness	2021	101000	244000	501010	104,518.01
	Health	Homelessness	2021	101000	244000	501020	2,273.07
	Health	Homelessness	2021	101000	244000	501040	5,773.14
	Health	Homelessness	2021	101000	244000	501080	25,451.09
	Health	Homelessness	2021	101000	244000	501090	62.90
	Health	Homelessness	2021	101000	244000	501100	17,895.50
	Health	Homelessness	2021	101000	244000	501105	8,783.10
	Health	Homelessness	2021	101000	244000	501115	37.62
	Health	Homelessness	2021	101000	244000	501130	224.03
	Health	Homelessness	2021	101000	244000	501140	151.48
	Health	Homelessness	2021	101000	244000	511000	1,440.81
	Health	Homelessness	2021	101000	244000	511010	72.40
	Health	Homelessness	2021	101000	244000	530060	175.25
	Health	Homelessness	2021	101000	244000	540100	570,000.00
	Health	Homelessness	2021	101000	244000	540640	200,000.00
	Health	Homelessness	2021	101000	244000	570210	1,519.66
	Health	Homelessness	2021	101000	244000	590210	2,957.18
	Health	Community Health Nursing	2021	101000	246000	501010	294,844.29
	Health	Community Health Nursing	2021	101000	246000	501020	7,060.08
	Health	Community Health Nursing	2021	101000	246000	501040	56,850.62
	Health	Community Health Nursing	2021	101000	246000	501080	75,711.70
	Health	Community Health Nursing	2021	101000	246000	501090	195.48
	Health	Community Health Nursing	2021	101000	246000	501100	74,221.36
	Health	Community Health Nursing	2021	101000	246000	501105	27,569.73
	Health	Community Health Nursing	2021	101000	246000	501115	114.32
	Health	Community Health Nursing	2021	101000	246000	501130	706.36
	Health	Community Health Nursing	2021	101000	246000	501140	451.35
	Health	Community Health Nursing	2021	101000	246000	511000	100,788.54
	Health	Community Health Nursing	2021	101000	246000	511010	1,169.10
	Health	Community Health Nursing	2021	101000	246000	511090	6,020.24
	Health	Community Health Nursing	2021	101000	246000	511330	703.17
	Health	Community Health Nursing	2021	101000	246000	511340	120.79
	Health	Community Health Nursing	2021	101000	246000	511360	530.10
	Health	Community Health Nursing	2021	101000	246000	530020	1,330.17
	Health	Community Health Nursing	2021	101000	246000	530060	490.50
	Health	Community Health Nursing	2021	101000	246000	530380	4,282.00
	Health	Community Health Nursing	2021	101000	246000	540010	1,471.03
	Health	Community Health Nursing	2021	101000	246000	540040	900.00
	Health	Community Health Nursing	2021	101000	246000	540050	755.00
	Health	Community Health Nursing	2021	101000	246000	540170	10,184.33

CSP Cat.	Department	Cost Center Description	Fiscal Year	Fund	Cost Center	Acct	Actuals
	Health	Community Health Nursing	2021	101000	246000	540200	53,660.55
	Health	Community Health Nursing	2021	101000	246000	540300	19,344.00
	Health	Community Health Nursing	2021	101000	246000	540640	20,021.51
	Health	Community Health Nursing	2021	101000	246000	590230	10,843.64
	Health	Environmental Health Services	2021	101000	256000	501010	710,813.51
	Health	Environmental Health Services	2021	101000	256000	501020	8,736.26
	Health	Environmental Health Services	2021	101000	256000	501040	83,873.61
	Health	Environmental Health Services	2021	101000	256000	501080	175,632.37
	Health	Environmental Health Services	2021	101000	256000	501090	422.39
	Health	Environmental Health Services	2021	101000	256000	501100	251,754.03
	Health	Environmental Health Services	2021	101000	256000	501105	58,956.76
	Health	Environmental Health Services	2021	101000	256000	501115	249.84
	Health	Environmental Health Services	2021	101000	256000	501130	1,589.48
	Health	Environmental Health Services	2021	101000	256000	501140	1,048.06
	Health	Environmental Health Services	2021	101000	256000	501240	3.19
	Health	Environmental Health Services	2021	101000	256000	511000	2,932.59
	Health	Environmental Health Services	2021	101000	256000	511010	1,717.42
	Health	Environmental Health Services	2021	101000	256000	511050	230.00
	Health	Environmental Health Services	2021	101000	256000	511330	1,736.13
	Health	Environmental Health Services	2021	101000	256000	530060	48.75
	Health	Environmental Health Services	2021	101000	256000	530360	3,789.22
	Health	Environmental Health Services	2021	101000	256000	540010	3,134.19
	Health	Environmental Health Services	2021	101000	256000	540040	90.00
	Health	Environmental Health Services	2021	101000	256000	540050	1,136.35
	Health	Environmental Health Services	2021	101000	256000	540170	7,079.90
	Health	Environmental Health Services	2021	101000	256000	540200	7,725.51
	Health	Environmental Health Services	2021	101000	256000	540260	35,456.18
	Health	Environmental Health Services	2021	101000	256000	540300	18,276.00
	Health	Environmental Health Services	2021	101000	256000	540650	700.00
	Health	Environmental Health Services	2021	101000	256000	580530	673.00
	Health	Environmental Health Services	2021	101000	256000	590210	602.57
	Health	SART Program	2021	101000	272000	530380	349,577.00
	Health	AHD Homelessness, MH & Sub	2021	206000	244500	501010	165,180.53
	Health	AHD Homelessness, MH & Sub	2021	206000	244500	501020	4,375.28
	Health	AHD Homelessness, MH & Sub	2021	206000	244500	501040	12,856.33
	Health	AHD Homelessness, MH & Sub	2021	206000	244500	501080	40,113.71
	Health	AHD Homelessness, MH & Sub	2021	206000	244500	501090	100.93
	Health	AHD Homelessness, MH & Sub	2021	206000	244500	501100	24,710.41
	Health	AHD Homelessness, MH & Sub	2021	206000	244500	501105	14,402.38
	Health	AHD Homelessness, MH & Sub	2021	206000	244500	501115	60.36
	Health	AHD Homelessness, MH & Sub	2021	206000	244500	501130	360.32
	Health	AHD Homelessness, MH & Sub	2021	206000	244500	501140	222.80
	Health	AHD Homelessness, MH & Sub	2021	206000	244500	511000	17,311.58
	Health	AHD Homelessness, MH & Sub	2021	206000	244500	511010	1,551.09
	Health	AHD Homelessness, MH & Sub	2021	206000	244500	511090	2,316.00
	Health	AHD Homelessness, MH & Sub	2021	206000	244500	540170	49.73
	Health	AHD Homelessness, MH & Sub	2021	206000	244500	540260	1,318.80
	Health	AHD Homelessness, MH & Sub	2021	206000	244500	570210	2,898.38
	Health	AHD Homelessness, MH & Sub	2021	206000	244500	590210	2,413.72
	Health	AHD Homelessness, MH & Sub	2021	206000	244500	590230	3,278.00
	Health	AHD Child Abuse/SADVP	2021	206000	244600	501010	20,051.72
	Health	AHD Child Abuse/SADVP	2021	206000	244600	501040	2,053.12
	Health	AHD Child Abuse/SADVP	2021	206000	244600	501080	4,770.09
	Health	AHD Child Abuse/SADVP	2021	206000	244600	501090	16.55
	Health	AHD Child Abuse/SADVP	2021	206000	244600	501100	9,626.88
	Health	AHD Child Abuse/SADVP	2021	206000	244600	501105	1,584.06
	Health	AHD Child Abuse/SADVP	2021	206000	244600	501115	9.31
	Health	AHD Child Abuse/SADVP	2021	206000	244600	501130	43.01
	Health	AHD Child Abuse/SADVP	2021	206000	244600	501140	27.94

CSP Cat.	Department	Cost Center Description	Fiscal Year	Fund	Cost Center	Acct	Actuals
	Health	AHD Child Abuse/SADVP	2021	206000	244600	511000	27,980.07
	Health	AHD Child Abuse/SADVP	2021	206000	244600	511080	3,712.98
	Health	AHD Child Abuse/SADVP	2021	206000	244600	530380	222.00
	Health	AHD Child Abuse/SADVP	2021	206000	244600	540100	2,852,229.80
	Health	AHD Child Abuse/SADVP	2021	206000	244600	540150	14,496.52
	Health	AHD Child Abuse/SADVP	2021	206000	244600	540640	13,903.13
	Health	AHD Child Abuse/SADVP	2021	206000	244600	540650	2,813.18
	Health	AHD Child Abuse/SADVP	2021	206000	244600	590210	1,789.86
	Health	AHD Child Abuse/SADVP	2021	206000	244600	590220	61.53
	Health	AHD Grants and Contracts	2021	231800	224000	540110	189,349.46
	Health	Disaster Recovery HHS	2021	231801	124309	501010	(951.06)
	Health	Disaster Recovery HHS	2021	231801	124309	501020	(424.91)
	Health	Disaster Recovery HHS	2021	231801	124309	501080	(287.74)
	Health	Disaster Recovery HHS	2021	231801	124309	501090	(0.62)
	Health	Disaster Recovery HHS	2021	231801	124309	501100	(242.69)
	Health	Disaster Recovery HHS	2021	231801	124309	501105	(101.95)
	Health	Disaster Recovery HHS	2021	231801	124309	501115	(0.35)
	Health	Disaster Recovery HHS	2021	231801	124309	501130	(2.75)
	Health	Disaster Recovery HHS	2021	231801	124309	501140	(1.70)
	Health	Disaster Recovery HHS	2021	231801	124309	511000	(7,561.83)
	Health	Disaster Recovery HHS	2021	231801	124309	511080	(403.11)
	Health	Disaster Recovery HHS	2021	231801	124309	570210	(5,105.94)
	Health	Disaster Recovery HHS	2021	231802	124309	501010	306,967.17
	Health	Disaster Recovery HHS	2021	231802	124309	501020	85,588.31
	Health	Disaster Recovery HHS	2021	231802	124309	501080	87,759.49
	Health	Disaster Recovery HHS	2021	231802	124309	501090	174.98
	Health	Disaster Recovery HHS	2021	231802	124309	501100	99,459.09
	Health	Disaster Recovery HHS	2021	231802	124309	501105	32,354.45
	Health	Disaster Recovery HHS	2021	231802	124309	501115	94.40
	Health	Disaster Recovery HHS	2021	231802	124309	501130	865.23
	Health	Disaster Recovery HHS	2021	231802	124309	501140	452.37
	Health	Disaster Recovery HHS	2021	231802	124309	501240	9.95
	Health	Disaster Recovery HHS	2021	231802	124309	511000	28,558.22
	Health	Disaster Recovery HHS	2021	231802	124309	511080	403.11
	Health	Disaster Recovery HHS	2021	231802	124309	530060	74.00
	Health	Disaster Recovery HHS	2021	231802	124309	530380	227,116.22
	Health	Disaster Recovery HHS	2021	231802	124309	540170	4,348.68
	Health	Disaster Recovery HHS	2021	231802	124309	570210	6,533.65
	Health	Disaster Recovery HHS	2021	231802	124309	590210	4,059.80
	Health	Public Health Division	2021	231802	232000	501010	124.56
	Health	Public Health Division	2021	231802	232000	501020	233.55
	Health	Public Health Division	2021	231802	232000	501080	78.78
	Health	Public Health Division	2021	231802	232000	501090	0.21
	Health	Public Health Division	2021	231802	232000	501100	135.18
	Health	Public Health Division	2021	231802	232000	501105	26.68
	Health	Public Health Division	2021	231802	232000	501115	0.25
	Health	Public Health Division	2021	231802	232000	501130	0.72
	Health	Public Health Division	2021	231802	232000	501140	0.92
	Health	AHD Emergency Preparedness	2021	231802	240500	501010	1,586.03
	Health	AHD Emergency Preparedness	2021	231802	240500	501020	26.53
	Health	AHD Emergency Preparedness	2021	231802	240500	501080	331.80
	Health	AHD Emergency Preparedness	2021	231802	240500	501090	0.87
	Health	AHD Emergency Preparedness	2021	231802	240500	501100	541.73
	Health	AHD Emergency Preparedness	2021	231802	240500	501105	119.87
	Health	AHD Emergency Preparedness	2021	231802	240500	501130	3.23
	Health	Community Health Nursing	2021	231802	246000	501010	11,370.78
	Health	Community Health Nursing	2021	231802	246000	501020	2,282.73
	Health	Community Health Nursing	2021	231802	246000	501080	3,005.97
	Health	Community Health Nursing	2021	231802	246000	501090	5.55

CSP			Fiscal		Cost		
Cat.	Department	Cost Center Description	Year	Fund	Center	Acct	Actuals
	Health	Community Health Nursing	2021	231802	246000	501100	3,393.66
	Health	Community Health Nursing	2021	231802	246000	501105	1,031.46
	Health	Community Health Nursing	2021	231802	246000	501115	3.50
	Health	Community Health Nursing	2021	231802	246000	501130	27.31
	Health	Community Health Nursing	2021	231802	246000	501140	16.96
	Health	AHD Grants and Contracts	2021	231900	224000	540110	594,448.21
	Health	Senior Svcs & Emerg. Outreach	2021	231900	233000	501010	376,019.81
	Health	Senior Svcs & Emerg. Outreach	2021	231900	233000	501020	4,180.47
	Health	Senior Svcs & Emerg. Outreach	2021	231900	233000	501040	22,320.22
	Health	Senior Svcs & Emerg. Outreach	2021	231900	233000	501080	88,404.25
	Health	Senior Svcs & Emerg. Outreach	2021	231900	233000	501090	272.78
	Health	Senior Svcs & Emerg. Outreach	2021	231900	233000	501100	170,327.67
	Health	Senior Svcs & Emerg. Outreach	2021	231900	233000	501105	29,833.51
	Health	Senior Svcs & Emerg. Outreach	2021	231900	233000	501115	160.02
	Health	Senior Svcs & Emerg. Outreach	2021	231900	233000	501130	803.61
	Health	Senior Svcs & Emerg. Outreach	2021	231900	233000	501140	543.31
	Health	Senior Svcs & Emerg. Outreach	2021	231900	233000	511000	11,206.37
	Health	Senior Svcs & Emerg. Outreach	2021	231900	233000	511010	4,554.82
	Health	Senior Svcs & Emerg. Outreach	2021	231900	233000	511090	5,438.96
	Health	Senior Svcs & Emerg. Outreach	2021	231900	233000	530360	300.00
	Health	Senior Svcs & Emerg. Outreach	2021	231900	233000	530380	38,741.24
	Health	Senior Svcs & Emerg. Outreach	2021	231900	233000	540040	915.00
	Health	Senior Svcs & Emerg. Outreach	2021	231900	233000	540050	1,924.00
	Health	Senior Svcs & Emerg. Outreach	2021	231900	233000	540150	9,344.68
	Health	Senior Svcs & Emerg. Outreach	2021	231900	233000	540170	3,786.88
	Health	Senior Svcs & Emerg. Outreach	2021	231900	233000	540220	15.95
	Health	Senior Svcs & Emerg. Outreach	2021	231900	233000	570210	1,485.52
	Health	Child Care Licensing	2021	231900	235000	501010	750,553.60
	Health	Child Care Licensing	2021	231900	235000	501020	67,494.17
	Health	Child Care Licensing	2021	231900	235000	501040	48,773.73
	Health	Child Care Licensing	2021	231900	235000	501080	191,469.77
	Health	Child Care Licensing	2021	231900	235000	501090	445.04
	Health	Child Care Licensing	2021	231900	235000	501100	247,538.53
	Health	Child Care Licensing	2021	231900	235000	501105	64,603.25
	Health	Child Care Licensing	2021	231900	235000	501115	261.63
	Health	Child Care Licensing	2021	231900	235000	501130	1,723.63
	Health	Child Care Licensing	2021	231900	235000	501140	1,062.54
	Health	Child Care Licensing	2021	231900	235000	501240	7.90
	Health	Child Care Licensing	2021	231900	235000	511010	636.79
	Health	Child Care Licensing	2021	231900	235000	511380	405.82
	Health	Child Care Licensing	2021	231900	235000	530360	0.28
	Health	Child Care Licensing	2021	231900	235000	540040	1,920.00
	Health	Child Care Licensing	2021	231900	235000	540050	155.00
	Health	Child Care Licensing	2021	231900	235000	540170	10,537.36
	Health	Child Care Licensing	2021	231900	235000	540220	193.76
	Health	Women, Infants & Children	2021	231900	238000	501010	727,054.87
	Health	Women, Infants & Children	2021	231900	238000	501020	6,811.23
	Health	Women, Infants & Children	2021	231900	238000	501040	62,185.91
	Health	Women, Infants & Children	2021	231900	238000	501080	181,111.02
	Health	Women, Infants & Children	2021	231900	238000	501090	607.32
	Health	Women, Infants & Children	2021	231900	238000	501100	228,687.25
	Health	Women, Infants & Children	2021	231900	238000	501105	62,112.25
	Health	Women, Infants & Children	2021	231900	238000	501115	354.50
	Health	Women, Infants & Children	2021	231900	238000	501130	1,585.90
	Health	Women, Infants & Children	2021	231900	238000	501140	1,066.73
	Health	Women, Infants & Children	2021	231900	238000	501240	4.18
	Health	Women, Infants & Children	2021	231900	238000	511000	4,386.56
	Health	Women, Infants & Children	2021	231900	238000	511010	4,027.16
	Health	Women, Infants & Children	2021	231900	238000	511050	119.40

CSP Cat.	Department	Cost Center Description	Fiscal Year	Fund	Cost Center	Acct	Actuals
	Health	Women, Infants & Children	2021	231900	238000	511090	380.00
	Health	Women, Infants & Children	2021	231900	238000	530360	2,086.00
	Health	Women, Infants & Children	2021	231900	238000	530380	4,623.60
	Health	Women, Infants & Children	2021	231900	238000	540040	392.00
	Health	Women, Infants & Children	2021	231900	238000	540050	3,953.60
	Health	Women, Infants & Children	2021	231900	238000	540150	2,189.30
	Health	Women, Infants & Children	2021	231900	238000	540170	11,945.36
	Health	Women, Infants & Children	2021	231900	238000	540220	437.50
	Health	Women, Infants & Children	2021	231900	238000	540610	34.18
	Health	Women, Infants & Children	2021	231900	238000	540640	80,470.24
	Health	Women, Infants & Children	2021	231900	238000	590230	8,423.15
	Health	AHD Emergency Preparedness	2021	231900	240500	501010	310,801.97
	Health	AHD Emergency Preparedness	2021	231900	240500	501020	17,555.40
	Health	AHD Emergency Preparedness	2021	231900	240500	501040	29,435.77
	Health	AHD Emergency Preparedness	2021	231900	240500	501080	80,322.94
	Health	AHD Emergency Preparedness	2021	231900	240500	501090	181.32
	Health	AHD Emergency Preparedness	2021	231900	240500	501100	103,630.75
	Health	AHD Emergency Preparedness	2021	231900	240500	501105	26,907.50
	Health	AHD Emergency Preparedness	2021	231900	240500	501115	112.49
	Health	AHD Emergency Preparedness	2021	231900	240500	501130	724.50
	Health	AHD Emergency Preparedness	2021	231900	240500	501140	485.36
	Health	AHD Emergency Preparedness	2021	231900	240500	501240	19.97
	Health	AHD Emergency Preparedness	2021	231900	240500	511000	(16,971.61)
	Health	AHD Emergency Preparedness	2021	231900	240500	511010	1,516.63
	Health	AHD Emergency Preparedness	2021	231900	240500	511090	1,483.00
	Health	AHD Emergency Preparedness	2021	231900	240500	511330	421.57
	Health	AHD Emergency Preparedness	2021	231900	240500	511340	841.55
	Health	AHD Emergency Preparedness	2021	231900	240500	520080	480.00
	Health	AHD Emergency Preparedness	2021	231900	240500	530360	2,546.22
	Health	AHD Emergency Preparedness	2021	231900	240500	530380	7,934,114.01
	Health	AHD Emergency Preparedness	2021	231900	240500	540110	4,265,689.53
	Health	AHD Emergency Preparedness	2021	231900	240500	540170	8,062.15
	Health	AHD Emergency Preparedness	2021	231900	240500	540271	1,112.88
	Health	AHD Emergency Preparedness	2021	231900	240500	540280	6,495.00
	Health	AHD Emergency Preparedness	2021	231900	240500	540300	9,792.00
	Health	AHD Emergency Preparedness	2021	231900	240500	540610	231,172.10
	Health	AHD Emergency Preparedness	2021	231900	240500	540640	8,539.69
	Health	AHD Emergency Preparedness	2021	231900	240500	540650	50.00
	Health	AHD Emergency Preparedness	2021	231900	240500	570210	19,199.43
	Health	AHD Emergency Preparedness	2021	231900	240500	590210	1,474.72
	Health	Human Services Division	2021	231900	241000	530380	39,624.17
	Health	Human Services Division	2021	231900	241000	540110	(3,150.00)
	Health	Community Safety & Development	2021	231900	242000	501010	7,248.99
	Health	Community Safety & Development	2021	231900	242000	501020	45.23
	Health	Community Safety & Development	2021	231900	242000	501040	5,373.56
	Health	Community Safety & Development	2021	231900	242000	501080	1,933.42
	Health	Community Safety & Development	2021	231900	242000	501090	4.48
	Health	Community Safety & Development	2021	231900	242000	501100	1,530.39
	Health	Community Safety & Development	2021	231900	242000	501105	963.48
	Health	Community Safety & Development	2021	231900	242000	501115	2.50
	Health	Community Safety & Development	2021	231900	242000	501130	24.35
	Health	Community Safety & Development	2021	231900	242000	501140	10.64
	Health	Community Safety & Development	2021	231900	242000	540110	748,922.27
	Health	Community Health Nursing	2021	231900	246000	501010	1,426,831.28
	Health	Community Health Nursing	2021	231900	246000	501020	35,413.70
	Health	Community Health Nursing	2021	231900	246000	501040	145,580.60
	Health	Community Health Nursing	2021	231900	246000	501080	354,006.25
	Health	Community Health Nursing	2021	231900	246000	501090	932.85
	Health	Community Health Nursing	2021	231900	246000	501100	466,614.71

CSP			Fiscal		Cost		
Cat.	Department	Cost Center Description	Year	Fund	Center	Acct	Actuals
	Health	Community Health Nursing	2021	231900	246000	501105	122,361.01
	Health	Community Health Nursing	2021	231900	246000	501115	543.50
	Health	Community Health Nursing	2021	231900	246000	501130	3,198.16
	Health	Community Health Nursing	2021	231900	246000	501140	2,075.74
	Health	Community Health Nursing	2021	231900	246000	511000	116,070.13
	Health	Community Health Nursing	2021	231900	246000	511010	1,929.91
	Health	Community Health Nursing	2021	231900	246000	511050	1,801.98
	Health	Community Health Nursing	2021	231900	246000	511080	48.67
	Health	Community Health Nursing	2021	231900	246000	511090	527.68
	Health	Community Health Nursing	2021	231900	246000	511330	87.37
	Health	Community Health Nursing	2021	231900	246000	520080	(75.00)
	Health	Community Health Nursing	2021	231900	246000	530380	900.56
	Health	Community Health Nursing	2021	231900	246000	540040	977.00
	Health	Community Health Nursing	2021	231900	246000	540050	2,869.53
	Health	Community Health Nursing	2021	231900	246000	540150	2,992.00
	Health	Community Health Nursing	2021	231900	246000	540170	2,309.43
	Health	Community Health Nursing	2021	231900	246000	540271	3,375.00
	Health	Community Health Nursing	2021	231900	246000	540640	43,841.74
	Health	Community Health Nursing	2021	231900	246000	540650	250.00
	Health	Environmental Health Services	2021	231900	256000	501010	48,470.25
	Health	Environmental Health Services	2021	231900	256000	501040	5,243.03
	Health	Environmental Health Services	2021	231900	256000	501080	11,760.69
	Health	Environmental Health Services	2021	231900	256000	501090	28.44
	Health	Environmental Health Services	2021	231900	256000	501100	17,625.05
	Health	Environmental Health Services	2021	231900	256000	501105	3,986.45
	Health	Environmental Health Services	2021	231900	256000	501115	16.68
	Health	Environmental Health Services	2021	231900	256000	501130	106.89
	Health	Environmental Health Services	2021	231900	256000	501140	72.40
	Health	Environmental Health Services	2021	231900	256000	511000	9,870.49
	Health	Environmental Health Services	2021	231900	256000	530380	114,694.70
	Health	Environmental Health Services	2021	231900	256000	540150	33,404.38
	Health	SART Program	2021	231900	272000	530380	12,383.19
	Health	Homeless Information Systems	2021	241800	233500	530380	0.42
	Health	Community Safety & Development	2021	241800	242000	501010	(261.59)
	Health	Community Safety & Development	2021	241800	242000	501040	(116.64)
	Health	Community Safety & Development	2021	241800	242000	501080	(51.66)
	Health	Community Safety & Development	2021	241800	242000	501090	(0.12)
	Health	Community Safety & Development	2021	241800	242000	501100	(2,769.95)
	Health	Community Safety & Development	2021	241800	242000	501105	(10.03)
	Health	Community Safety & Development	2021	241800	242000	501115	0.02
	Health	Community Safety & Development	2021	241800	242000	501130	(0.66)
	Health	Community Safety & Development	2021	241800	242000	501140	0.10
	Health	Community Safety & Development	2021	241800	242000	511010	4.37
	Health	Community Safety & Development	2021	241800	242000	540110	134,490.72
	Health	Community Safety & Development	2021	241800	242000	540150	(789.35)
	Health	Public Health Division	2021	241900	232000	540100	1,623,165.00
	Health	Public Health Division	2021	241900	232000	580530	7,547.99
	Health	Homeless Information Systems	2021	241900	233500	530380	(0.42)
	Health	Child Care Licensing	2021	241900	235000	540100	350,000.00
	Health	Child Care Licensing	2021	241900	235000	540110	5,643.73
	Health	Community Safety & Development	2021	241900	242000	501010	162,472.07
	Health	Community Safety & Development	2021	241900	242000	501020	485.96
	Health	Community Safety & Development	2021	241900	242000	501040	20,167.30
	Health	Community Safety & Development	2021	241900	242000	501080	37,704.46
	Health	Community Safety & Development	2021	241900	242000	501090	87.97
	Health	Community Safety & Development	2021	241900	242000	501100	54,824.62
	Health	Community Safety & Development	2021	241900	242000	501105	12,863.79
	Health	Community Safety & Development	2021	241900	242000	501115	56.17
	Health	Community Safety & Development	2021	241900	242000	501130	339.54

CSP			Fiscal		Cost		
Cat.	Department	Cost Center Description	Year	Fund	Center	Acct	Actuals
	Health	Community Safety & Development	2021	241900	242000	501140	228.47
	Health	Community Safety & Development	2021	241900	242000	511000	87.49
	Health	Community Safety & Development	2021	241900	242000	511010	1,293.37
	Health	Community Safety & Development	2021	241900	242000	511330	62.03
	Health	Community Safety & Development	2021	241900	242000	540100	463,840.11
	Health	Community Safety & Development	2021	241900	242000	540110	3,722,507.87
	Health	Community Safety & Development	2021	241900	242000	540150	2,447.73
	Health	Community Safety & Development	2021	241900	242000	540170	23.33
	Health	Community Safety & Development	2021	241900	242000	540280	166,274.25
	Health	Community Safety & Development	2021	241900	242000	540300	2,940.00
	Health	Environmental Health Services	2021	241900	256000	501010	8,014.12
	Health	Environmental Health Services	2021	241900	256000	501020	208.40
	Health	Environmental Health Services	2021	241900	256000	501080	1,808.94
	Health	Environmental Health Services	2021	241900	256000	501090	5.24
	Health	Environmental Health Services	2021	241900	256000	501100	2,496.44
	Health	Environmental Health Services	2021	241900	256000	501105	575.80
	Health	Environmental Health Services	2021	241900	256000	501115	2.17
	Health	Environmental Health Services	2021	241900	256000	501130	16.44
	Health	Environmental Health Services	2021	241900	256000	501140	8.17
	Health	AHD Grants and Contracts	2021	261010	224000	540110	245,165.00
	Health	Animal Care & Control	2021	261010	225000	511000	3,020.97
	Health	Animal Care & Control	2021	261010	225000	511090	4,995.00
	Health	Homelessness	2021	261010	244000	540100	479,396.31
	Health	Administration Division Support	2021	401100	221000	501010	20,399.32
	Health	Administration Division Support	2021	401100	221000	501080	4,620.14
	Health	Administration Division Support	2021	401100	221000	501090	9.35
	Health	Administration Division Support	2021	401100	221000	501100	6,048.33
	Health	Administration Division Support	2021	401100	221000	501105	1,584.07
	Health	Administration Division Support	2021	401100	221000	501115	5.42
	Health	Administration Division Support	2021	401100	221000	501130	41.91
	Health	Administration Division Support	2021	401100	221000	501140	28.52
	Health	Administration Division Support	2021	401100	221000	511000	3,875.00
	Health	Administration Division Support	2021	401100	221000	530360	6,738.29
	Health	Administration Division Support	2021	401100	221000	530375	662.50
	Health	Administration Division Support	2021	401100	221000	530380	120,187.06
	Health	Administration Division Support	2021	401100	221000	540400	106,313.12
	Health	Administration Division Support	2021	401100	221000	540640	1,166,422.60
	Health	Administration Division Support	2021	401100	221000	590200	(3,667.64)
	Health	Senior Svcs & Emerg. Outreach	2021	401100	233000	501010	311.78
	Health	Senior Svcs & Emerg. Outreach	2021	401100	233000	501080	71.96
	Health	Senior Svcs & Emerg. Outreach	2021	401100	233000	501090	0.14
	Health	Senior Svcs & Emerg. Outreach	2021	401100	233000	501100	15.33
	Health	Senior Svcs & Emerg. Outreach	2021	401100	233000	501105	22.96
	Health	Senior Svcs & Emerg. Outreach	2021	401100	233000	501115	0.07
	Health	Senior Svcs & Emerg. Outreach	2021	401100	233000	501130	0.63
	Health	Senior Svcs & Emerg. Outreach	2021	401100	233000	501140	0.39
	Health	Senior Svcs & Emerg. Outreach	2021	401100	233000	530380	2,330.00
	Health	Senior Svcs & Emerg. Outreach	2021	401100	233000	540400	59.20
	Health	Senior Svcs & Emerg. Outreach	2021	401100	233000	540640	77,436.00
	Health	Administration Division Support	2021	401800	221000	501010	1,336.20
	Health	Administration Division Support	2021	401800	221000	501080	293.97
	Health	Administration Division Support	2021	401800	221000	501090	0.63
	Health	Administration Division Support	2021	401800	221000	501100	267.62
	Health	Administration Division Support	2021	401800	221000	501105	101.50
	Health	Administration Division Support	2021	401800	221000	501115	0.50
	Health	Administration Division Support	2021	401800	221000	501130	2.67
	Health	Administration Division Support	2021	401800	221000	501140	2.60
	Health	Administration Division Support	2021	401800	221000	530380	4,928.00
	Health	Administration Division Support	2021	401800	221000	540400	559.11

CSP							
Cat.	Department	Cost Center Description	Fiscal Year	Fund	Cost Center	Acct	Actuals
	Health	Animal Care & Control	2021	401800	225000	501010	445.40
	Health	Animal Care & Control	2021	401800	225000	501080	97.99
	Health	Animal Care & Control	2021	401800	225000	501090	0.21
	Health	Animal Care & Control	2021	401800	225000	501100	133.81
	Health	Animal Care & Control	2021	401800	225000	501105	24.20
	Health	Animal Care & Control	2021	401800	225000	501115	0.25
	Health	Animal Care & Control	2021	401800	225000	501130	0.89
	Health	Animal Care & Control	2021	401800	225000	501140	1.30
	Health	Animal Care & Control	2021	401800	225000	530380	775.00
	Health	Animal Care & Control	2021	401800	225000	540400	5,695.63
	Health	Animal Care & Control	2021	401800	225000	540640	70,410.00
							<u>54,177,003.68</u>

CSP Cat.	Department	Cost Center Description	Fiscal Year	Fund	Cost Center	Acct	Actuals
	Health	AHD Director's Office	2021	101000	211000	600020	14,747.31
	Health	AHD Director's Office	2021	101000	211000	600030	11,260.54
	Health	AHD Director's Office	2021	101000	211000	600050	15,862.01
	Health	AHD Director's Office	2021	101000	211000	600060	15,175.46
	Health	AHD Director's Office	2021	101000	211000	600080	32,745.38
	Health	AHD Director's Office	2021	101000	211000	600090	25,700.27
	Health	AHD Director's Office	2021	101000	211000	600140	782.00
	Health	AHD Director's Office	2021	101000	211000	600150	32,049.93
	Health	AHD Director's Office	2021	101000	211000	600160	117,624.98
	Health	AHD Director's Office	2021	101000	211000	600180	149,901.97
	Health	AHD Director's Office	2021	101000	211000	600190	4,782.73
	Health	AHD Director's Office	2021	101000	211000	600200	278,135.52
	Health	AHD Director's Office	2021	101000	211000	600220	11,859.93
	Health	AHD Director's Office	2021	101000	211000	600240	98,295.99
	Health	AHD Director's Office	2021	101000	211000	600280	32,491.72
	Health	AHD Director's Office	2021	101000	211000	600290	72,021.52
	Health	AHD Director's Office	2021	101000	211000	600300	96,409.58
	Health	AHD Director's Office	2021	101000	211000	600320	29,984.24
	Health	AHD Director's Office	2021	101000	211000	600330	8,198.31
	Health	AHD Director's Office	2021	101000	211000	600360	64,322.58
	Health	AHD Director's Office	2021	101000	211000	600370	6,672.38
	Health	AHD Director's Office	2021	101000	211000	600430	35,216.03
	Health	AHD Director's Office	2021	101000	211000	600540	87,124.85
	Health	AHD Director's Office	2021	101000	211000	600570	17,083.77
	Health	AHD Director's Office	2021	101000	211000	600580	63,331.34
	Health	AHD Director's Office	2021	101000	211000	600610	31,010.77
	Health	AHD Director's Office	2021	101000	211000	601080	2,975.38
	Health	AHD Director's Office	2021	101000	211000	601090	1,294,832.93
	Health	AHD Director's Office	2021	101000	211000	601580	235,349.35
	Health	AHD Director's Office	2021	101000	211000	601590	179,166.99
	Health	AHD Director's Office	2021	101000	211000	601600	94,043.09
	Health	AHD Director's Office	2021	101000	211000	601840	9,804.42
	Health	AHD Director's Office	2021	101000	211000	601850	17,988.65
	Health	AHD Director's Office	2021	101000	211000	601880	123,594.64
	Health	AHD Director's Office	2021	101000	211000	601890	207,084.40
	Health	AHD Director's Office	2021	101000	211000	601900	6,061.44
	Health	AHD Director's Office	2021	101000	211000	601910	16,291.24
	Health	AHD Director's Office	2021	101000	211000	601930	(7.29)
	Health	AHD Director's Office	2021	101000	211000	605530	76.57
	Health	AHD Director's Office	2021	101000	211000	605540	5,148.29
	Health	Medical Director	2021	101000	212000	605530	30.12
	Health	Medical Director	2021	101000	212000	605540	2,146.07
	Health	Administration Division Support	2021	101000	221000	600250	2,954.95
	Health	Administration Division Support	2021	101000	221000	601470	8,010.41
	Health	Administration Division Support	2021	101000	221000	605020	(6,651.16)
	Health	Administration Division Support	2021	101000	221000	605530	143.10
	Health	Administration Division Support	2021	101000	221000	605540	10,732.12
	Health	AHD Fiscal Support	2021	101000	222000	605530	67.31
	Health	AHD Fiscal Support	2021	101000	222000	605540	5,152.77
	Health	AHD Grants and Contracts	2021	101000	224000	605023	17,527.20
	Health	AHD Grants and Contracts	2021	101000	224000	605530	108.80
	Health	AHD Grants and Contracts	2021	101000	224000	605540	8,808.76
	Health	Animal Care & Control	2021	101000	225000	600440	401.33
	Health	Animal Care & Control	2021	101000	225000	600490	1,061.18
	Health	Public Health Division	2021	101000	232000	601470	8,010.41
	Health	Public Health Division	2021	101000	232000	605020	(10,399.25)
	Health	Public Health Division	2021	101000	232000	605530	34.75
	Health	Public Health Division	2021	101000	232000	605540	2,364.58
	Health	Senior Svcs & Emerg. Outreach	2021	101000	233000	600230	25.02

CSP			Fiscal		Cost		
Cat.	Department	Cost Center Description	Year	Fund	Center	Acct	Actuals
	Health	Senior Svcs & Emerg. Outreach	2021	101000	233000	605530	36.65
	Health	Senior Svcs & Emerg. Outreach	2021	101000	233000	605540	2,566.49
	Health	Child Care Licensing	2021	101000	235000	605014	(32,121.00)
	Health	Anchorage Safety Center/Patrol	2021	101000	236000	605530	6.22
	Health	Anchorage Safety Center/Patrol	2021	101000	236000	605540	428.95
	Health	Women, Infants & Children	2021	101000	238000	600910	13,127.98
	Health	Women, Infants & Children	2021	101000	238000	601020	7,049.71
	Health	Women, Infants & Children	2021	101000	238000	605020	(28,118.25)
	Health	Women, Infants & Children	2021	101000	238000	605530	30.59
	Health	Women, Infants & Children	2021	101000	238000	605540	2,360.45
	Health	Anchorage Domestic Violence F	2021	101000	239000	605530	10.34
	Health	Anchorage Domestic Violence F	2021	101000	239000	605540	833.73
	Health	AHD Emergency Preparedness	2021	101000	240500	605530	27.10
	Health	AHD Emergency Preparedness	2021	101000	240500	605540	2,024.60
	Health	Human Services Division	2021	101000	241000	600250	8,499.61
	Health	Human Services Division	2021	101000	241000	601470	8,010.41
	Health	Human Services Division	2021	101000	241000	605014	(54,822.25)
	Health	Human Services Division	2021	101000	241000	605023	2,297.00
	Health	Human Services Division	2021	101000	241000	605530	72.88
	Health	Human Services Division	2021	101000	241000	605540	5,331.67
	Health	Community Safety & Developme	2021	101000	242000	605530	485.16
	Health	Community Safety & Developme	2021	101000	242000	605540	15,172.79
	Health	Homelessness	2021	101000	244000	605530	33.66
	Health	Homelessness	2021	101000	244000	605540	2,726.37
	Health	Community Health Nursing	2021	101000	246000	600490	27.93
	Health	Community Health Nursing	2021	101000	246000	605015	(82,305.95)
	Health	Community Health Nursing	2021	101000	246000	605020	(124,060.30)
	Health	Community Health Nursing	2021	101000	246000	605063	(49,167.80)
	Health	Community Health Nursing	2021	101000	246000	605530	119.81
	Health	Community Health Nursing	2021	101000	246000	605540	8,568.19
	Health	Environmental Health Services	2021	101000	256000	601410	32,731.57
	Health	Environmental Health Services	2021	101000	256000	605530	268.85
	Health	Environmental Health Services	2021	101000	256000	605540	19,286.66
	Health	AHD Homelessness, MH & Sub	2021	206000	244500	605530	54.08
	Health	AHD Homelessness, MH & Sub	2021	206000	244500	605540	4,377.93
	Health	AHD Child Abuse/SADVP	2021	206000	244600	600230	1,575.30
	Health	AHD Child Abuse/SADVP	2021	206000	244600	605530	6.47
	Health	AHD Child Abuse/SADVP	2021	206000	244600	605540	526.88
	Health	SART Program	2021	231800	272000	615200	273.00
	Health	Disaster Recovery HHS	2021	231801	124309	605530	(73.02)
	Health	Disaster Recovery HHS	2021	231801	124309	605540	(30.12)
	Health	Disaster Recovery HHS	2021	231802	124309	600230	6,552.74
	Health	Disaster Recovery HHS	2021	231802	124309	605530	209.65
	Health	Disaster Recovery HHS	2021	231802	124309	605540	10,523.49
	Health	Public Health Division	2021	231802	232000	605530	0.11
	Health	Public Health Division	2021	231802	232000	605540	8.70
	Health	AHD Emergency Preparedness	2021	231802	240500	605530	0.48
	Health	AHD Emergency Preparedness	2021	231802	240500	605540	39.18
	Health	Community Health Nursing	2021	231802	246000	605530	4.08
	Health	Community Health Nursing	2021	231802	246000	605540	331.78
	Health	AHD Grants and Contracts	2021	231900	224000	605019	10,710.00
	Health	AHD Grants and Contracts	2021	231900	224000	615200	9,190.50
	Health	Senior Svcs & Emerg. Outreach	2021	231900	233000	600230	199.13
	Health	Senior Svcs & Emerg. Outreach	2021	231900	233000	605014	19,167.75
	Health	Senior Svcs & Emerg. Outreach	2021	231900	233000	605018	19,168.25
	Health	Senior Svcs & Emerg. Outreach	2021	231900	233000	605530	127.42
	Health	Senior Svcs & Emerg. Outreach	2021	231900	233000	605540	9,765.63
	Health	Senior Svcs & Emerg. Outreach	2021	231900	233000	615200	16,715.00
	Health	Child Care Licensing	2021	231900	235000	600230	417.11

CSP			Fiscal		Cost		
Cat.	Department	Cost Center Description	Year	Fund	Center	Acct	Actuals
	Health	Child Care Licensing	2021	231900	235000	605014	67,775.50
	Health	Child Care Licensing	2021	231900	235000	605018	67,775.50
	Health	Child Care Licensing	2021	231900	235000	605530	266.26
	Health	Child Care Licensing	2021	231900	235000	605540	20,994.72
	Health	Child Care Licensing	2021	231900	235000	615200	74,382.00
	Health	Women, Infants & Children	2021	231900	238000	600230	2,537.39
	Health	Women, Infants & Children	2021	231900	238000	605017	111,358.65
	Health	Women, Infants & Children	2021	231900	238000	605020	28,118.25
	Health	Women, Infants & Children	2021	231900	238000	605530	264.79
	Health	Women, Infants & Children	2021	231900	238000	605540	19,250.91
	Health	Women, Infants & Children	2021	231900	238000	615200	96,839.81
	Health	AHD Emergency Preparedness	2021	231900	240500	605018	21,357.25
	Health	AHD Emergency Preparedness	2021	231900	240500	605020	21,357.25
	Health	AHD Emergency Preparedness	2021	231900	240500	605530	125.23
	Health	AHD Emergency Preparedness	2021	231900	240500	605540	8,760.84
	Health	AHD Emergency Preparedness	2021	231900	240500	615200	17,924.50
	Health	Community Safety & Development	2021	231900	242000	605530	3.72
	Health	Community Safety & Development	2021	231900	242000	605540	296.94
	Health	Community Safety & Development	2021	231900	242000	615200	18,024.32
	Health	Community Health Nursing	2021	231900	246000	600230	71.86
	Health	Community Health Nursing	2021	231900	246000	605015	82,305.95
	Health	Community Health Nursing	2021	231900	246000	605016	6,120.61
	Health	Community Health Nursing	2021	231900	246000	605020	124,060.30
	Health	Community Health Nursing	2021	231900	246000	605063	49,167.80
	Health	Community Health Nursing	2021	231900	246000	605530	521.76
	Health	Community Health Nursing	2021	231900	246000	605540	38,826.70
	Health	Community Health Nursing	2021	231900	246000	615200	234,119.28
	Health	Environmental Health Services	2021	231900	256000	600230	974.62
	Health	Environmental Health Services	2021	231900	256000	605018	6,651.17
	Health	Environmental Health Services	2021	231900	256000	605019	6,651.17
	Health	Environmental Health Services	2021	231900	256000	605020	6,651.16
	Health	Environmental Health Services	2021	231900	256000	605530	18.49
	Health	Environmental Health Services	2021	231900	256000	605540	1,294.24
	Health	Community Safety & Development	2021	241800	242000	605530	(0.80)
	Health	Community Safety & Development	2021	241800	242000	605540	(6.73)
	Health	Community Safety & Development	2021	241800	242000	615200	13,460.00
	Health	Environmental Health Services	2021	241800	256000	615200	1,113.00
	Health	Community Safety & Development	2021	241900	242000	605530	(214.57)
	Health	Community Safety & Development	2021	241900	242000	605540	4,940.18
	Health	Community Safety & Development	2021	241900	242000	615200	235,798.00
	Health	Environmental Health Services	2021	241900	256000	605530	2.47
	Health	Environmental Health Services	2021	241900	256000	605540	199.79
	Health	Animal Care & Control	2021	261010	225000	615200	183.00
	Health	Administration Division Support	2021	401100	221000	600230	181.42
	Health	Administration Division Support	2021	401100	221000	605530	123.93
	Health	Administration Division Support	2021	401100	221000	605540	743.44
	Health	Administration Division Support	2021	401100	221000	615202	13,000.00
	Health	Senior Svcs & Emerg. Outreach	2021	401100	233000	600230	138.87
	Health	Senior Svcs & Emerg. Outreach	2021	401100	233000	605530	1.85
	Health	Senior Svcs & Emerg. Outreach	2021	401100	233000	605540	11.03
	Health	Administration Division Support	2021	401800	221000	605530	7.89
	Health	Administration Division Support	2021	401800	221000	605540	47.30
	Health	Animal Care & Control	2021	401800	225000	605530	2.63
	Health	Animal Care & Control	2021	401800	225000	605540	15.77
							<u>4,871,708.43</u>

CSP			Fiscal		Cost		
Cat.	Department	Cost Center Description	Year	Fund	Center	Acct	Actuals
	Health	AHD Director's Office	2021	101000	211000	408380	(449.38)
	Health	Medical Director	2021	101000	212000	408380	(314.83)
	Health	Administration Division Support	2021	101000	221000	408380	(635.17)
	Health	AHD Fiscal Support	2021	101000	222000	408380	(345.38)
	Health	AHD Fiscal Support	2021	101000	222000	605018	(114,952.17)
	Health	AHD Grants and Contracts	2021	101000	224000	408380	(987.79)
	Health	AHD Grants and Contracts	2021	101000	224000	605019	(17,361.17)
	Health	Animal Care & Control	2021	101000	225000	404210	(180,395.51)
	Health	Animal Care & Control	2021	101000	225000	406510	(225,172.86)
	Health	Animal Care & Control	2021	101000	225000	406520	(16,316.03)
	Health	Animal Care & Control	2021	101000	225000	407050	(24,052.55)
	Health	Public Health Division	2021	101000	232000	408380	(365.13)
	Health	Senior Svcs & Emerg. Outreach	2021	101000	233000	408380	(728.14)
	Health	Child Care Licensing	2021	101000	235000	406170	(40,550.45)
	Health	Child Care Licensing	2021	101000	235000	408380	(913.35)
	Health	Anchorage Safety Center/Patrol	2021	101000	236000	408380	(107.78)
	Health	Women, Infants & Children	2021	101000	238000	408380	(1,398.31)
	Health	Women, Infants & Children	2021	101000	238000	605017	(111,358.65)
	Health	Anchorage Domestic Violence F	2021	101000	239000	408380	(106.60)
	Health	Human Services Division	2021	101000	241000	408380	(2,170.36)
	Health	Human Services Division	2021	101000	241000	605020	(10,958.00)
	Health	Community Safety & Developme	2021	101000	242000	408380	(1,400.78)
	Health	Health Information Mgmt	2021	101000	243000	408380	(224.44)
	Health	Disease Prevention & Control	2021	101000	245000	408380	(1,185.27)
	Health	Community Health Nursing	2021	101000	246000	406160	(29,543.62)
	Health	Community Health Nursing	2021	101000	246000	406180	(84,027.76)
	Health	Community Health Nursing	2021	101000	246000	408380	(1,590.25)
	Health	Community Health Nursing	2021	101000	246000	408550	90.40
	Health	Community Health Nursing	2021	101000	246000	605016	(6,120.61)
	Health	Environmental Health Services	2021	101000	256000	406170	(260,102.15)
	Health	Environmental Health Services	2021	101000	256000	407080	(1,351.56)
	Health	Environmental Health Services	2021	101000	256000	408380	(659.05)
	Health	Environmental Health Services	2021	101000	256000	408400	(150.00)
	Health	AHD Grants and Contracts	2021	231800	224000	450010	(242,982.00)
	Health	SART Program	2021	231800	272000	450010	(273.00)
	Health	Disaster Recovery HHS	2021	231802	124309	405150	(51,556.22)
	Health	AHD Grants and Contracts	2021	231900	224000	405010	(614,348.71)
	Health	Senior Svcs & Emerg. Outreach	2021	231900	233000	405010	(440,457.27)
	Health	Senior Svcs & Emerg. Outreach	2021	231900	233000	405150	(396,504.98)
	Health	Child Care Licensing	2021	231900	235000	405010	767.88
	Health	Child Care Licensing	2021	231900	235000	405150	(1,620,161.77)
	Health	Women, Infants & Children	2021	231900	238000	405150	(1,653,419.01)
	Health	AHD Emergency Preparedness	2021	231900	240500	405150	(13,115,721.91)
	Health	Human Services Division	2021	231900	241000	405010	(36,474.17)
	Health	Community Safety & Developme	2021	231900	242000	405150	(784,384.29)
	Health	Community Health Nursing	2021	231900	246000	405010	(2,939,726.46)
	Health	Community Health Nursing	2021	231900	246000	405150	(330,931.60)
	Health	Environmental Health Services	2021	231900	256000	405010	(23,722.81)
	Health	Environmental Health Services	2021	231900	256000	405150	(243,797.49)
	Health	SART Program	2021	231900	272000	405010	(12,383.19)
	Health	Community Safety & Developme	2021	241800	242000	408370	(119,134.86)
	Health	Community Safety & Developme	2021	241800	242000	408380	(5,325.00)
	Health	Community Safety & Developme	2021	241800	242000	450010	0.07
	Health	Environmental Health Services	2021	241800	256000	450010	(673.00)
	Health	Public Health Division	2021	241900	232000	405100	(1,630,287.69)
	Health	Homeless Information Systems	2021	241900	233500	405100	0.42
	Health	Child Care Licensing	2021	241900	235000	405100	(350,000.00)
	Health	Community Safety & Developme	2021	241900	242000	405100	(4,838,665.24)
	Health	Environmental Health Services	2021	241900	256000	405100	(13,337.98)

CSP							
Cat.	Department	Cost Center Description	Fiscal Year	Fund	Cost Center	Acct	Actuals
	Health	Animal Care & Control	2021	261010	225000	430030	(36,405.00)
	Health	Animal Care & Control	2021	261010	225000	450010	(220.00)
	Health	Administration Division Support	2021	401100	221000	460010	(1,725,068.00)
	Health	Administration Division Support	2021	401100	221000	460030	(371,932.00)
	Health	Administration Division Support	2021	401800	221000	450010	(7,547.99)
	Health	Animal Care & Control	2021	401800	225000	450010	(98,449.09)
							<u>(32,839,027.06)</u>

CSP Cat.	Department	Cost Center Description	Fiscal Year	Fund	Cost Center	Acct	Actuals
	Health	AHD Director's Office	2021	101000	211000	600020	14,747.31
	Health	AHD Director's Office	2021	101000	211000	600030	11,260.54
	Health	AHD Director's Office	2021	101000	211000	600050	15,862.01
	Health	AHD Director's Office	2021	101000	211000	600060	15,175.46
	Health	AHD Director's Office	2021	101000	211000	600090	25,700.27
	Health	AHD Director's Office	2021	101000	211000	600140	782.00
	Health	AHD Director's Office	2021	101000	211000	600150	32,049.93
	Health	AHD Director's Office	2021	101000	211000	600200	278,135.52
	Health	AHD Director's Office	2021	101000	211000	600220	11,859.93
	Health	AHD Director's Office	2021	101000	211000	600240	98,295.99
	Health	AHD Director's Office	2021	101000	211000	600280	32,491.72
	Health	AHD Director's Office	2021	101000	211000	600290	72,021.52
	Health	AHD Director's Office	2021	101000	211000	600300	96,409.58
	Health	AHD Director's Office	2021	101000	211000	600320	29,984.24
	Health	AHD Director's Office	2021	101000	211000	600330	8,198.31
	Health	AHD Director's Office	2021	101000	211000	600360	64,322.58
	Health	AHD Director's Office	2021	101000	211000	600370	6,672.38
	Health	AHD Director's Office	2021	101000	211000	600430	35,216.03
	Health	AHD Director's Office	2021	101000	211000	600540	87,124.85
	Health	AHD Director's Office	2021	101000	211000	600570	17,083.77
	Health	AHD Director's Office	2021	101000	211000	600580	63,331.34
	Health	AHD Director's Office	2021	101000	211000	600610	31,010.77
	Health	AHD Director's Office	2021	101000	211000	601080	2,975.38
	Health	AHD Director's Office	2021	101000	211000	601090	1,294,832.93
	Health	AHD Director's Office	2021	101000	211000	601580	235,349.35
	Health	AHD Director's Office	2021	101000	211000	601590	179,166.99
	Health	AHD Director's Office	2021	101000	211000	601600	94,043.09
	Health	AHD Director's Office	2021	101000	211000	601890	207,084.40
	Health	Administration Division Support	2021	101000	221000	600250	2,954.95
	Health	Administration Division Support	2021	101000	221000	601470	8,010.41
	Health	Animal Care & Control	2021	101000	225000	600440	401.33
	Health	Animal Care & Control	2021	101000	225000	600490	1,061.18
	Health	Public Health Division	2021	101000	232000	601470	8,010.41
	Health	Senior Svcs & Emerg. Outreach	2021	101000	233000	600230	25.02
	Health	Women, Infants & Children	2021	101000	238000	600910	13,127.98
	Health	Women, Infants & Children	2021	101000	238000	601020	7,049.71
	Health	Human Services Division	2021	101000	241000	600250	8,499.61
	Health	Human Services Division	2021	101000	241000	601470	8,010.41
	Health	Community Health Nursing	2021	101000	246000	600490	27.93
	Health	Environmental Health Services	2021	101000	256000	601410	32,731.57
	Health	AHD Child Abuse/SADVP	2021	206000	244600	600230	1,575.30
	Health	Disaster Recovery HHS	2021	231802	124309	600230	6,552.74
	Health	Women, Infants & Children	2021	231900	238000	600230	2,537.39
	Health	Community Health Nursing	2021	231900	246000	600230	71.86
	Health	Administration Division Support	2021	401100	221000	600230	181.42
	Health	Senior Svcs & Emerg. Outreach	2021	401100	233000	600230	138.87
							<u>3,162,156.28</u>

CSP Cat.	Department	Cost Center Description	Fiscal Year	Fund	Cost Center	Acct	Actuals
	Health	AHD Director's Office	2021	101000	211000	600080	32,745.38
	Health	AHD Director's Office	2021	101000	211000	600160	117,624.98
	Health	AHD Director's Office	2021	101000	211000	600180	149,901.97
	Health	AHD Director's Office	2021	101000	211000	600190	4,782.73
	Health	AHD Debt Service	2021	101000	215000	580010	14,213.94
	Health	AHD Debt Service	2021	101000	215000	580020	2,733.16
	Health	AHD Debt Service	2021	101000	215000	580030	0.04
	Health	AHD Debt Service	2021	101000	215000	580140	7.77
	Health	Administration Division Support	2021	101000	221000	540150	114.16
	Health	Administration Division Support	2021	101000	221000	570210	1,567.36
	Health	AHD Fiscal Support	2021	101000	222000	570210	1,919.63
	Health	AHD Grants and Contracts	2021	101000	224000	540100	28,007.50
	Health	AHD Grants and Contracts	2021	101000	224000	570210	1,449.19
	Health	AHD Grants and Contracts	2021	101000	224000	580530	242,982.00
	Health	Animal Care & Control	2021	101000	225000	580530	220.00
	Health	Public Health Division	2021	101000	232000	540150	405.00
	Health	Child Care Licensing	2021	101000	235000	570210	5,018.40
	Health	Anchorage Domestic Violence F	2021	101000	239000	540110	165,000.00
	Health	AHD Emergency Preparedness	2021	101000	240500	580530	880.00
	Health	Human Services Division	2021	101000	241000	540150	789.35
	Health	Human Services Division	2021	101000	241000	580530	273.00
	Health	Community Safety & Developme	2021	101000	242000	540100	300,000.00
	Health	Community Safety & Developme	2021	101000	242000	570210	1,396.36
	Health	Community Safety & Developme	2021	101000	242000	580530	817,982.00
	Health	Homelessness	2021	101000	244000	540100	570,000.00
	Health	Homelessness	2021	101000	244000	570210	1,519.66
	Health	Environmental Health Services	2021	101000	256000	580530	673.00
	Health	AHD Homelessness, MH & Sub	2021	206000	244500	570210	2,898.38
	Health	AHD Child Abuse/SADVP	2021	206000	244600	540100	2,852,229.80
	Health	AHD Child Abuse/SADVP	2021	206000	244600	540150	14,496.52
	Health	AHD Grants and Contracts	2021	231800	224000	540110	189,349.46
	Health	Disaster Recovery HHS	2021	231801	124309	570210	(5,105.94)
	Health	Disaster Recovery HHS	2021	231802	124309	570210	6,533.65
	Health	AHD Grants and Contracts	2021	231900	224000	540110	594,448.21
	Health	Senior Svcs & Emerg. Outreach	2021	231900	233000	540150	9,344.68
	Health	Senior Svcs & Emerg. Outreach	2021	231900	233000	570210	1,485.52
	Health	Women, Infants & Children	2021	231900	238000	540150	2,189.30
	Health	AHD Emergency Preparedness	2021	231900	240500	540110	4,265,689.53
	Health	AHD Emergency Preparedness	2021	231900	240500	570210	19,199.43
	Health	Human Services Division	2021	231900	241000	540110	(3,150.00)
	Health	Community Safety & Developme	2021	231900	242000	540110	748,922.27
	Health	Community Health Nursing	2021	231900	246000	540150	2,992.00
	Health	Environmental Health Services	2021	231900	256000	540150	33,404.38
	Health	Community Safety & Developme	2021	241800	242000	540110	134,490.72
	Health	Community Safety & Developme	2021	241800	242000	540150	(789.35)
	Health	Public Health Division	2021	241900	232000	540100	1,623,165.00
	Health	Public Health Division	2021	241900	232000	580530	7,547.99
	Health	Child Care Licensing	2021	241900	235000	540100	350,000.00
	Health	Child Care Licensing	2021	241900	235000	540110	5,643.73
	Health	Community Safety & Developme	2021	241900	242000	540100	463,840.11
	Health	Community Safety & Developme	2021	241900	242000	540110	3,722,507.87
	Health	Community Safety & Developme	2021	241900	242000	540150	2,447.73
	Health	AHD Grants and Contracts	2021	261010	224000	540110	245,165.00
	Health	Homelessness	2021	261010	244000	540100	479,396.31
							<u>18,230,548.88</u>