

Municipality of Anchorage

- Alaska –

2023

Central Services Cost Allocation Plan



Dave Bronson
Mayor

Sharon Lechner
Director (Acting), Office of Management & Budget

MUNICIPALITY OF ANCHORAGE

2023

CENTRAL SERVICES PLAN

Table of Contents

GENERAL INFORMATION

Certificate of Cost Allocation Plan.....	1
Introduction to Central Services Plan.....	2
Cognizant Agency Determination.....	3
Organizational Chart at 01/01/2021.....	5

FINANCIAL INFORMATION

Indirect Costs to Grants from Central Service Plan Units.....	6
Unallowable Cost Adjustments by Municipal Account.....	7
Carry Forward Adjustment.....	8
Summary of Billing Units (Including Adjustments).....	9
 Detail of Direct Expenditures.....	 12
Detail of IGC Expenditures (Direct and Indirect).....	30
Detail of Non-Allowable Expense Adj-Within Unit.....	35
Detail of Billings (IGC) and Program Revenues.....	36

INTRAGOVERNMENTAL CHARGE-OUT METHODOLOGIES

102003 Clerk-Agenda Control.....	40
102006 Clerk-Municipal Audit.....	41
102007 Clerk-Liquor License.....	42
103000 Ombudsman.....	43
106000 Internal Audit.....	44
111100 Mayor.....	45
113200 Office of Equal Opportunity.....	46
113271 IGC-OEO-Equal Employment Opportunity.....	47
113272 IGC-OEO-Contract Compliance.....	48
113273 IGC-OEO-Contract DBE.....	49
115100 Civil Law.....	50
115200 Criminal.....	51
115300 Administrative Hearing.....	52

115400 Muni Attorney Administration.....	53
121000 Muni Manager Admin.....	54
122300 Leases Administration.....	55
122301 Leases-Parking Garage.....	56
122302 Leases-City Hall.....	57
122303 Leases-ERTC.....	58
122304 Leases-Libraries.....	59
122306 Leases-Traffic.....	60
122307 Leases-Recreation.....	61
122309 Leases-Permit Center.....	62
122310 Leases-Police.....	63
124200 Office of Emergency Management.....	64
124700 Risk Management.....	65
124900 Safety.....	66
132100 Controller Administration.....	67
132200 Central Accounting.....	68
132300 Payroll.....	69
132400 Accounts Payable.....	70
134100 Treasury Administration.....	71
134200 Revenue Management.....	72
134271 IGC-Rev Mgmt-E911.....	73
134272 IGC-Rev Mgmt-PSAR Billing	74
134273 IGC-Rev Mgmt-Cash Receipts.....	75
134274 IGC-Rev Mgmt-In-House Collections.....	76
134275 IGC-Rev Mgmt-DCF.....	77
134276 IGC-Exter Collect Agency Recov.....	78
134600 Tax Billing.....	79
134671 IGC-Tax Billing Utilities.....	80
134700 Remittance Processing.....	81
134771 IGC-Remittance Processing.....	82
137000 Chief Fiscal Officer.....	83
138100 Purchasing Services.....	84
139100 Management & Budget.....	85
141100 Admin Support.....	86
142300 Reprographics.....	87
142371 IGC-Repro.....	88
142400 Records Management.....	89
142500 IGC IT Fin Svcs.....	90

143500 IGC - IT Security.....	91
143571 IT Security - All.....	92
143572 IT Security - No AWWU.....	93
144000 Fixed Assets.....	94
144003 IGC - Microsoft EA SW & HW uprds.....	95
145100 Application Services.....	96
145500 ERP Services.....	97
146200 IGC - SAP Support Centr.....	98
147300 Projects & Procurement.....	99
148100 Desktop Services.....	100
148200 Network Services.....	101
148271 IGC - Netwk Svcs - Servers.....	102
148272 IGC - Netwk Svcs - Network.....	103
148273 IGC - Network Svcs - Phones.....	104
148300 Technology Services.....	105
149001 CAMA Depreciation.....	106
181000 Employee Relations Admin.....	107
184100 Labor Relations.....	108
184500 Employment.....	109
187100 Benefits.....	110
510500 OECD Administration	111
510600 OECD Data & Analytics.....	112
510671 IGC-OECD GIS Licensing.....	113
510672 IGC-OECD GIS Enterprise Program.....	114
510673 IGC-OECD GIS Dept Support.....	115
510800 iTeam.....	116
710500 Facility Maintenance.....	117
710503 Facilities-Girdwood.....	118
710506 Facilities-Eagle River Town Center.....	119
710509 Facilities-Fire Stations.....	120
710512 Facilities-Libraries.....	121
710515-Facilities-Fac Maint Whse.....	122
710518 Facilities-Traffic.....	123
710521 Facilities-RES/Historical Property.....	124
710524 Facilities-Areawide Parks & Rec.....	125
710527 Facilities-Health and Human Services.....	126
710530 Facilities-ARDSA.....	127

710533 Facilities-Transit/Centers/Park & Rides.....	128
710536 Facilities-Fleet Maint.....	129
710539 Facilities-Police / Substations.....	130
710542 Facilities-Eagle River Parks & Rec.....	131
710545 Facilities-City Hall.....	132
710548 Facilities-Eagle River Parks & Rec Chalet.....	133
710551 Facilities-Eagle River Parks & Rec Pools.....	134
710554 Facilities-Areawide Parks & Rec Pools.....	135
710557 Facilities-Heritage Land Bank.....	136
710560 Facilities-Chugiak Fire Service Area.....	137
710562 Facilities-CBERRRSA.....	138
710563 Facilities-NC HJ Mac Mem Ctr.....	139
710566 Facilities-NC Sullivan Arena.....	140
710569 Facilities-NC Egan Center.....	141
710572 Facilities-NC Dena'ina Center.....	142
710575 Facilities-NC Performing Arts Center.....	143
710581 Facilities- NC Anchorage Museum.....	144
710583 Facilities-Permit Center.....	145
710800 Facility Capital Improvements.....	146

Certificate of Cost Allocation Plan

This is to certify that I have reviewed the cost allocation plan submitted herewith and to the best of my knowledge and belief:

- (1) All costs included in this proposal to establish cost allocations or billing for the period January 1, 2023 through December 31, 2023 are allowable in accordance with the requirements of this Part and the Federal award(s) to which they apply.¹ Unallowable costs have been adjusted for in allocating costs as indicated in the cost allocation plan.
- (2) All costs included in this proposal are properly allocable to Federal awards on the basis of a beneficial or a causal relationship between the expenses incurred and the Federal awards to which they are allocated in accordance with applicable requirements. Further, the same costs that have been treated as indirect costs have not been claimed as direct costs. Similar types of costs have been accounted for consistently.

I declare the foregoing is true and correct.

Municipality of Anchorage
Anchorage, Alaska

Wilks Consulting Services, Inc.
Anchorage, Alaska

(Signature)

Sharon Lechner
Director (Acting), Office of Management & Budget
Date of Execution: _____

(Signature)

William J. Wilks
Preparer

Date of Execution: _____

¹ Office of Management and Budget, 2CFR Chapter 1 and Chapter 11, Parts 200, 215, 220, 225, and 230. Uniform Administration Requirements, Cost Principles, and Audit Requirements for Federal Awards.

Introduction to Central Services Cost Allocation Plan

This document presents the Central Services Cost Allocation Plan for the Municipality of Anchorage. The central service costs presented in this document are based on the Municipality's actual costs from January 1, 2021 to December 31, 2021. They will be included in the Indirect Cost Rate Proposals and rates used by grantee departments during the fiscal year beginning January 1, 2023.

Most Municipal central service budget units charge user units for services through the allocation system within the Intragovernmental Chargeback System (IGCs). The IGCs and the allocation system with it are integrated with the Municipality's financial information system and allows automated or manual transfer of expenses between budget units. This document explains the billing methodologies and allocated amounts for those units. Additionally, this document presents a consolidated summary of the actual 2021 costs for the various central services plan agencies.

A few central service units do not bill for their services through IGCs. This document includes allocation methodologies and allocated amounts for those units. Additionally, this document presents a consolidated summary of the actual 2021 costs for those central services plan agencies.

Some costs billed through the IGCs are unallowable under the guidelines presented in the Office of Management & Budget guidance on Administrative Requirements, Cost Principals, and Audit Requirements for Federal Awards released December 26, 2013. The existence of such unallowable costs and the 2021 amounts are presented in this document. This information on unallowable costs will be used in the Indirect Cost Rate Proposals to calculate appropriate downward adjustments to the grantee department indirect cost rates.

Cognizant Agency

Background:

The Municipality of Anchorage (MOA) requested Parrish Blessing and Associates (PBA) provide guidance in determining the MOA's cognizant Federal agency responsible for approving the MOA's Cost Allocation Plan (CAP) and Indirect Cost Rate Proposals (ICRP). Through 2018, the MOA annually developed a CAP and ICRPs in compliance with applicable Federal regulations through a self-certification process. Upon completion of each annual CAP and ICRPs, the MOA uploaded these studies on its website for public review and inspection¹.

These studies, among other things, contained a certification by the MOA's Chief Fiscal Officer that the plans were compliant with applicable Federal regulations involving Federal grant awards including a narrative explaining how the cost studies were prepared, and finally, an indirect cost rate schedule showing the calculations of the ICRP for each MOA department that intends to charge indirect costs to Federal grant awards. The CAPs and ICRPs each contained a letter from the MOA's then cognizant Federal agency, the Department of Health and Human Services, dated August 19, 1986 instructing the MOA that future CAPs and ICRPs no longer have to be submitted for their review, but must continue to be prepared in accordance with Federal regulations and available upon request as of the time a claim is made against a Federal award.

Given the passage of time since the August 1986 letter, the MOA requested a determination of its cognizant agency for approval of its CAPs and ICRPs. The cognizant agency for indirect costs means the Federal agency responsible for reviewing, negotiating, and approving indirect cost proposals or cost allocation plans developed under 2 CFR part 200 on behalf of all Federal agencies. Cognizance is generally assigned to the Federal agency that provides the predominant amount of dollar involvement with a recipient organization. Once designed as the cognizant agency for indirect costs, the Federal agency must remain so for a period of 5 years.

Determination of the MOA's Cognizant Agency:

On December 26, 2013, the Federal Office of Management & Budget (OMB) published its Uniform Guidance that became effective for Federal agencies immediately. Non-Federal entities (i.e. the MOA) were required to comply with the regulations beginning December 2014. Those regulations, among other things, identified the filing requirements of Major Local Government agencies needing to file a CAP to its cognizant agency for indirect costs on an annual basis, and further, identified the cognizant agency². PBA reviewed the reference given in the Federal register and the MOA was identified and the cognizant agency assigned to the MOA was the Department of Health & Human Services (DHHS). Based on these rules and regulations PBA believed that DHHS remained the MOA's cognizant agency through 2018.

¹ The MOA OMB is responsible for the development of the MOA Central Service CAPs and ICRPs. These studies can be viewed on the MOA's website at: <http://www.muni.org/Departments/budget/indirectCost/Pages/default.aspx>

² See Federal Register Vol. 78, No. 248 issued Thursday, December 26, 2013/Rules and Regulations at page 78606 Appendix V that states: "The "major local governments" subject to this requirement, along with each cognizant agency assignment, are listed in the **Federal Register** notice dated January 6, 1986 (available at: http://www.whitehouse.gov/sites/default/files/omb/assets/financial_pdf/fr-notice_cost_negotiation_010686.pdf)."

PBA reviewed the MOA's website and saw that it had made available its CAPs and ICRPs from 2010 through 2018 and had correctly recognized that its cognizant agency was DHHS.

When the MOA was required to complete its 2019 CAP and ICRP, a fresh-look determination of the cognizant agency was required, given that 5 years had lapsed since the December 2014 regulations that assigned the DHHS as the MOA's cognizant agency. PBA believed that in order to determine the appropriate cognizant agency for future CAPs and ICRPs, a review of Federal awards received in 2018 was required.

Working with the MOA OMB staff, PBA determined, based on Table 1 below (Summary of Federal grant awards by MOA agency for 2018), that the MOA's cognizant Federal agency should be the Department of Transportation (DOT) beginning in 2019 and continuing for 5 years or through 2023, pursuant to Federal regulations. As shown in Table 1, DOT provides the predominant amount of dollar involvement with a MOA in 2018

Table 1: Summary of Direct Federal Grant Awards/Amendments by MOA Agency for 2018

2018 Sum of Federal Award Amount	Equal Rights Comm.	Health	Merrill Field	Police	Port	Public Transp.	Total
Department of Health & Human Services	-	26,000	-	-	-	-	26,000
Department of Homeland Security	-	-	-	-	455,150	-	455,150
Department of Housing & Urban Development	-	2,604,334	-	-	-	-	2,604,334
Department of Justice	-	-	-	674,379	-	-	674,379
Department of the Interior	-	-	472,104	-	-	-	472,104
Department of Transportation	-	-	12,337,784	-	-	3,773,716	16,111,500
Equal Employment Opportunity Commission	68,900	-	-	-	-	-	68,900
Grand Total	68,900	2,630,334	12,809,888	674,379	455,150	3,773,716	20,412,367

Although the majority of the grants received by MOA are in Merrill Field from Department of Transportation, Federal Aviation Administration (FAA), the FAA follows indirect costs as determined by the Federal Transit Administration (FTA) circular.

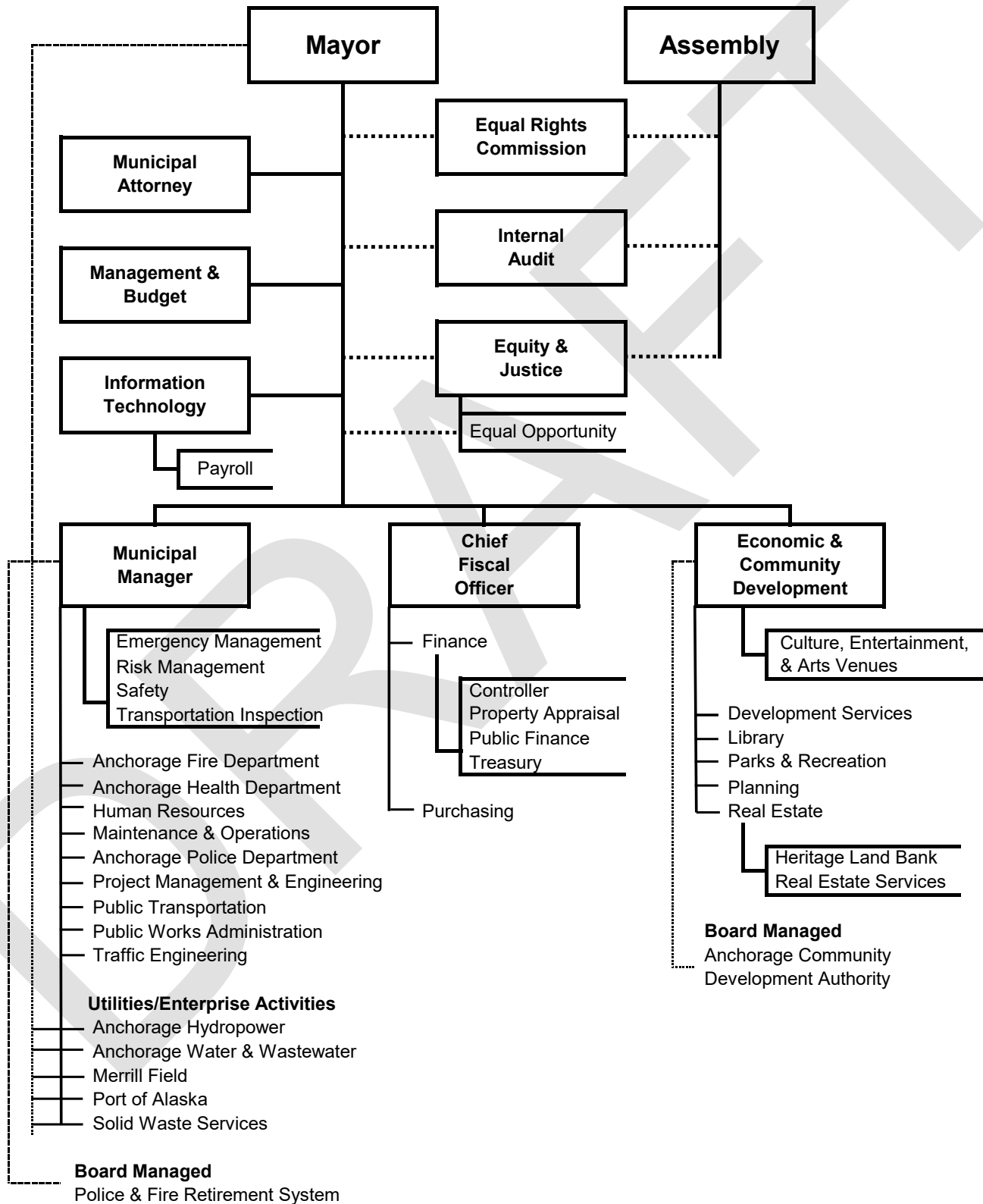
With the change in cognizant agencies, the FTA determined that the MOA needed to submit the CAP and ICRPs for approval.

As part of this engagement, the MOA also requested that PBA determine if changing its cognizant agency from DHHS to another agency (DOT) required submitting its CAP and ICRP for approval. To make this determination PBA reviewed the U.S. Department of Transportation, Federal Transit Administration Circular FTA C 5010.1E issued March 21, 2017 and associated revisions released July 21, 2017 and July 16, 2018. The FTA circular provides the following conditions that trigger the need for submitting a recipient's CAP and ICRP for approval as follows:

In Summary, based on FTA circular as reference herein PBA concluded that beginning in 2019 and continuing for 5 years or through 2023, the MOA's cognizant agency is DOT. Further, that the MOA should continue to prepare its CAP and ICRPs pursuant to these regulations.



MUNICIPALITY OF ANCHORAGE



Indirect Costs to Grants from Cost Allocation Plan Units

Indirect costs are costs incurred for a common or joint purpose benefiting more than one cost objective. Indirect costs must be supported by an approved Cost Allocation Plan (CAP) and/or Indirect Cost Rate Proposal (ICRP).

Indirect costs include: (1) the indirect costs originating in each department or agency of the recipient carrying out federal Awards; and (2) the costs of central governmental services distributed through the central service cost allocation plan and not otherwise treated as direct costs.

Unallowable Cost Adjustments by Municipal Account

The following account expenditures are considered Unallowable for purposes of preparing the Municipal Central Services Plan (CSP) and Indirect Cost Rate Proposals. Those accounts which are generally unallowable are filtered out of the total costs used in preparing both the CSP and Indirect Cost Proposals for the Municipality of Anchorage (MOA). Those expenditure accounts are:

Capital

Municipal accounts 570000 – 570999

Although OMB regulations permit flexibility in allowing some capital costs to be allowable, MOA has taken a more conservative approach and excludes all capital costs in its determination of the CSP unallowable percentage computation and indirect cost rates.

Contributions to Other Funds

Municipal accounts 580530, 580540, and 580550 except for reserves and contributions to capital for purpose.

Other

Direct Costs

Account

Novelties	511290
Legal Services	530090 – 530180
Lobbying Services	530210
Court Costs, Invest, Record Exp	540030
Donations to Non-Profit Org	540100
Contributions to Outside Organizations	540110, 540120
Sponsorship - Operating	540130
Advertising	540150
Election – Misc. Exp	540450
Penalties	540510
Assessment Payments	540590
Debt Service, All	580000 – 580499

Indirect Costs

Office of the Mayor IGCs municipal account 600080

Department of Law IGCs municipal accounts 600160, 600170, 600180, 600190

The expenditures in these accounts are then compiled in the Non-Allowable Expenditures columns in the reports on the following pages and used to compute the disallowance percentage for Municipal Indirect Cost Rate Proposals.

Carry Forward Adjustment

The Municipality of Anchorage computes its central services plan using a “fixed with carry forward” procedure. Under this procedure, historical costs are used for a future fiscal year central services plan. When the actual costs of the year involved become known, the differences between the fixed amounts used in central services cost calculation and the actual costs will be carried forward and used as an adjustment to the fixed amounts established for a later year, only if the result is a net overbill.

For example, the Municipality used actual 2018 historical costs to set the central services plan for 2021. Actual 2021 costs were available at the time the Municipality prepared its 2023 central services plan. Therefore, the Municipality made a carry forward adjustment for the 2023 central services plan by taking the difference between the actual 2021 costs and the fixed costs used to set 2021 central services plan (2018 historical costs) as an adjustment to the 2023 central services plan.



**Municipality of Anchorage
Central Services Plan (CSP)
Summary of Billing Units (Including Adjustments)**

The following units' costs were used in the development of Indirect Cost Rates for the Municipality of Anchorage. These central services costs are collected and pooled in these units and then are allocated out 100% according to methodologies that were developed to best represent cost causer/cost payor correlation. The charges from these units are, for the most part, considered indirect costs because they generally cannot be directly attributed to any specific program, but most programs need and use the services these units provide. Although they are shown as billed costs to the various programs, they are generally not treated nor billed as direct costs to grants. These are identified with a "CS" in the Detail pages of the Central Services Cost Allocation Plan and Indirect

			Using Results as of December 31, 2021						Amount (Over)/Under Billed if 100% Revenue Supported	2019 Amount (Over)/Under Billed if 100% Revenue Supported	2021 Carry Forward Adjustment (2)
Fund	Cost Center	Description	Direct Expenditures	IGC Expenditures (Direct and Indirect)	Total Expenditures - Direct and IGC	Non- Allowable Expenditures (1)	Total Allowable Expenditures	Billing (IGC) and Program Revenues			
101000	102003	Clerk-Agenda Control	237,357	475	237,832	-	237,832	(237,832)	-	-	-
101000	102006	Clerk-Municipal Audit	466,584	-	466,584	-	466,584	(466,584)	-	-	-
101000	102007	Clerk-Liquor License	76,734	550	77,283	-	77,283	(77,283)	-	-	-
101000	103000	Ombudsman	269,147	34,477	303,624	-	303,624	(303,624)	-	-	-
101000	106000	Internal Audit	746,424	80,459	826,883	-	826,883	(826,883)	-	-	-
101000	111100	Mayor	1,415,839	131,697	1,547,536	195	1,547,341	(1,547,536)	-	-	-
101000	113200	Office of Equal Opportunity	256,256	33,372	289,629	-	289,629	(289,629)	-	-	-
101000	113271	IGC-OEO-Equal Employment Opportun	-	28,929	28,929	-	28,929	(28,929)	-	-	-
101000	113272	IGC-OEO-Contract Compliance	-	43,393	43,393	-	43,393	(43,393)	-	-	-
101000	113273	IGC-OEO-Contract DBE	-	216,964	216,964	-	216,964	(216,964)	-	-	-
101000	115100	Civil Law	2,320,151	359,176	2,679,327	71,921	2,607,406	(2,679,327)	-	-	-
101000	115200	Criminal	3,306,041	459,816	3,765,857	43,640	3,722,217	(3,765,857)	-	-	-
101000	115300	Administrative Hearing	290,240	27,459	317,699	4,783	312,916	(317,699)	-	-	-
101000	115400	Muni Attorney Administration	315,751	37,885	353,636	-	353,636	(353,636)	-	-	-
101000	121000	Muni Manager Admin	489,382	70,850	560,231	2,100	558,131	(560,231)	-	-	-
101000	122300	Leases Administration	-	-	-	-	-	-	-	-	-
101000	122301	Leases-Parking Garage	91,980	-	91,980	-	91,980	(91,980)	-	-	-
101000	122302	Leases-City Hall	3,819,101	-	3,819,101	187,950	3,631,151	(3,819,101)	-	-	-
101000	122303	Leases-ERTC	344,080	-	344,080	120,000	224,080	(344,080)	-	-	-
101000	122304	Leases-Libraries	223,031	-	223,031	-	223,031	(223,031)	-	-	-
101000	122306	Leases-Traffic	48,000	-	48,000	-	48,000	(48,000)	-	-	-
101000	122307	Leases-Recreation	368,745	-	368,745	-	368,745	(368,745)	-	-	-
101000	122309	Leases-Permit Center	2,058,564	-	2,058,564	-	2,058,564	(2,058,564)	-	-	-
101000	122310	Leases-Police	37,432	-	37,432	-	37,432	(37,432)	-	-	-
101000	124200	Office of Emergency Management	957,414	123,420	1,080,834	541,935	538,899	(1,080,834)	-	-	-
101000	124700	Risk Management	288,418	752,075	1,040,494	614,611	425,882	(1,040,494)	-	-	-
101000	124900	Safety	145,014	18,042	163,056	517	162,539	(163,056)	-	-	-
101000	132100	Controller Administration	212,887	20,892	233,779	-	233,779	(233,779)	-	-	-
101000	132200	Central Accounting	2,167,658	383,857	2,551,515	-	2,551,515	(2,551,515)	-	-	-
101000	132300	Payroll	1,341,595	88,984	1,430,579	-	1,430,579	(1,430,579)	-	-	-
101000	132400	Accounts Payable	239,581	138,752	378,333	-	378,333	(378,333)	-	-	-
101000	134100	Treasury Administration	318,003	45,526	363,528	-	363,528	(363,528)	-	-	-
101000	134200	Revenue Management	1,990,114	333,872	2,323,986	6,045	2,317,942	(2,313,804)	10,183	-	-
101000	134271	IGC-Rev Mgmt-E911	-	12,643	12,643	-	12,643	(12,643)	-	-	-
101000	134272	IGC-Rev Mgmt-PSAR Billing	-	151,718	151,718	-	151,718	(151,718)	-	-	-
101000	134273	IGC-Rev Mgmt-Cash Receipts	-	196,872	196,872	-	196,872	(196,872)	-	-	-
101000	134274	IGC-Rev Mgmt-In-House Collections	-	30,705	30,705	-	30,705	(30,705)	-	-	-
101000	134275	IGC-Rev Mgmt-DCF	-	475,022	475,022	-	475,022	(475,022)	-	-	-
101000	134276	IGC-Exter Collect Agency Recov	-	30,705	30,705	-	30,705	(30,705)	-	-	-
101000	134600	Tax Billing	634,850	108,613	743,462	1,209	742,254	(743,421)	41	-	-
101000	134671	IGC-Tax Billing Utilities	-	97,187	97,187	-	97,187	(97,187)	-	-	-

2023 Cost Allocation Plan

Using Results as of December 31, 2021

Central Services

Fund	Cost Center	Description	Direct Expenditures	IGC Expenditures (Direct and Indirect)	Total Expenditures - Direct and IGC	Non-Allowable Expenditures (1)	Total Allowable Expenditures	Billing (IGC) and Program Revenues	Amount (Over)/Under Billed if 100% Revenue Supported	2019 Amount (Over)/Under Billed if 100% Revenue Supported		2021 Carry Forward Adjustment (2)
101000	134700	Remittance Processing	222,764	70,898	293,661	-	293,661	(293,661)	-	-	-	-
101000	134771	IGC-Remittance Processing	-	232,903	232,903	-	232,903	(232,903)	-	-	-	-
101000	137000	Chief Fiscal Officer	386,954	704	387,658	7,246	380,412	(387,658)	-	-	-	-
101000	138100	Purchasing Services	1,900,052	185,511	2,085,564	1,968	2,083,596	(2,085,564)	-	-	-	-
101000	139100	Management & Budget	911,257	106,525	1,017,782	-	1,017,782	(1,017,782)	-	-	-	-
607000	141100	Admin Support	1,099,146	565,357	1,664,503	-	1,664,503	(1,664,503)	-	-	-	-
101000	142300	Reprographics	932,166	249,333	1,181,499	15,295	1,166,204	(1,166,204)	15,295	-	-	-
101000	142371	IGC-Repro	-	795,751	795,751	-	795,751	(795,751)	-	-	-	-
101000	142400	Records Management	206,737	23,052	229,789	-	229,789	(229,789)	-	-	-	-
607000	142500	IGC IT Fin Svcs	-	-	-	-	-	-	-	-	-	-
607000	143500	IGC - IT Security	880,655	69,350	950,005	-	950,005	(950,005)	-	-	-	-
607000	143571	IGC - IT Security - All	-	360,926	360,926	-	360,926	(360,926)	-	-	-	-
607000	143572	IGC - IT Security - No AWWU	-	588,879	588,879	-	588,879	(588,879)	-	-	-	-
607000	144000	Fixed Assets	278,430	-	278,430	177,774	100,656	(278,430)	-	-	-	-
607000	144003	IGC - Microsoft EA SW & HW upgrds	1,454,763	-	1,454,763	-	1,454,763	(1,454,763)	-	-	-	-
607000	145100	Application Services	2,039,959	326,229	2,366,189	-	2,366,189	(2,366,189)	-	-	-	-
607000	145500	ERP Services	-	-	-	-	-	-	-	-	-	-
607000	146200	IGC - SAP Support Centr	6,029,710	640,385	6,670,095	562,474	6,107,620	(6,670,095)	-	-	-	-
607000	146279	IGC - SAP Capital Recovery	-	-	-	-	-	(3,973,188)	-	-	-	-
607000	147300	Projects & Procurement	892,672	162,675	1,055,347	-	1,055,347	(1,055,347)	-	-	-	-
607000	148100	Desktop Services	1,984,486	230,362	2,214,848	-	2,214,848	(2,214,848)	-	-	-	-
607000	148200	Network Services	5,149,320	322,937	5,472,257	-	5,472,257	(5,472,257)	-	-	-	-
607000	148271	IGC - Netwk Svcs - Servers	-	2,837,942	2,837,942	-	2,837,942	(2,837,942)	-	-	-	-
607000	148272	IGC - Netwk Svcs - Network	-	1,870,462	1,870,462	-	1,870,462	(1,870,462)	-	-	-	-
607000	148273	IGC - Netwk Svcs - Phones	-	757,586	757,586	-	757,586	(757,586)	-	-	-	-
607000	148300	Technology Services	761,065	-	761,065	-	761,065	(761,065)	-	-	-	-
607000	149001	CAMA Depreciation	-	-	-	-	-	-	-	-	-	-
101000	181000	Employee Relations Admin	344,668	123,961	468,630	6,230	462,399	(468,630)	-	-	-	-
101000	184100	Labor Relations	1,094,434	368,107	1,462,541	-	1,462,541	(1,462,541)	-	-	-	-
101000	184500	Employment	1,677,558	664,962	2,342,519	-	2,342,519	(2,342,519)	-	-	-	-
101000	187100	Benefits	496,924	277,521	774,445	-	774,445	(774,445)	-	-	-	-
101000	510500	OECD Admin	398,612	186,238	584,850	65,066	519,784	(584,850)	-	-	-	-
101000	510600	OECD Data & Analytics	1,008,879	37,197	1,046,076	-	1,046,076	(1,046,076)	-	-	-	-
101000	510671	IGC-OECD GIS Licensing	-	325,000	325,000	-	325,000	(325,000)	-	-	-	-
101000	510672	IGC-OECD GIS Enterprise Program	-	576,868	576,868	-	576,868	(576,868)	-	-	-	-
101000	510673	IGC-OECD GIS Dept Support	-	144,000	144,000	-	144,000	(144,000)	-	-	-	-
101000	510800	i-team	401,687	21,892	423,578	6,095	417,484	(423,578)	-	-	-	-
101000	710500	Facility Maintenance	4,939,253	1,035,743	5,974,996	764,842	5,210,154	(5,974,996)	-	-	-	-
101000	710503	Facilities-Girdwood	18,807	21,835	40,642	-	40,642	(40,642)	-	-	-	-
101000	710506	Facilities-Eagle River Town Center	93,829	90,941	184,770	-	184,770	(184,770)	-	-	-	-
101000	710509	Facilities-Fire Stations	1,347,089	1,185,614	2,532,703	-	2,532,703	(2,532,703)	-	-	-	-
101000	710512	Facilities-Libraries	1,764,532	1,275,083	3,039,615	-	3,039,615	(3,039,615)	-	-	-	-
101000	710515	Facilities-Fac Maint Whse	165,359	176,937	342,296	-	342,296	(342,296)	-	-	-	-
101000	710518	Facilities-Traffic	3,909	44,428	48,337	-	48,337	(48,337)	-	-	-	-
101000	710521	Facilities-RES/Historical Property	32,189	24,385	56,574	-	56,574	(56,574)	-	-	-	-
101000	710524	Facilities-Areawide Parks & Rec	392,405	347,389	739,794	-	739,794	(739,794)	-	-	-	-
101000	710527	Facilities-Health and Human Services	735,539	586,360	1,321,900	27,067	1,294,833	(1,321,900)	-	-	-	-
101000	710530	Facilities-ARDSA	25,602	3,646	29,248	24,309	4,939	(29,248)	-	-	-	-
101000	710533	Facilities-Transit/Centers/Park & Rides	1,054,937	935,467	1,990,404	-	1,990,404	(1,990,404)	-	-	-	-
101000	710536	Facilities-Fleet Maint	224,591	179,510	404,101	-	404,101	(404,101)	-	-	-	-
101000	710539	Facilities-Police / Substations	988,805	722,309	1,711,114	98,449	1,612,665	(1,711,114)	-	-	-	-
101000	710542	Facilities-Eagle River Parks & Rec	3,750	702	4,452	-	4,452	(4,452)	-	-	-	-

Using Results as of December 31, 2021

									Central Services	
									2019	2021
									Amount	Carry Forward
									(Over)/Under	Adjustment
									Billed if 100%	(2)
									Revenue	
									Supported	
									Supported	
Fund	Cost Center	Description	Direct Expenditures	IGC Expenditures (Direct and Indirect)	Total Expenditures - Direct and IGC	Non-Allowable Expenditures (1)	Total Allowable Expenditures	Billing (IGC) and Program Revenues	Amount (Over)/Under Billed if 100% Revenue Supported	
101000	710545	Facilities-City Hall	187,555	133,232	320,787	-	320,787	(320,787)	-	-
101000	710548	Facilities-Eagle River Parks & Rec Cha	122	541	663	-	663	(663)	-	-
101000	710551	Facilities-Eagle River Parks & Rec Poo	5,423	11,310	16,733	-	16,733	(16,733)	-	-
101000	710554	Facilities-Areawide Parks & Rec Pools	77,560	45,545	123,105	-	123,105	(123,105)	-	-
101000	710557	Facilities-Heritage Land Bank	15,448	14,908	30,356	-	30,356	(30,356)	-	-
101000	710560	Facilities-Chugiak Fire Service Area	17,958	18,953	36,911	-	36,911	(36,911)	-	-
101000	710562	Facilities-CBERRRSA	24	1	25	-	25	(25)	-	-
101000	710563	Facilities-NC HJ Mac Mem Ctr	10,726	-	10,726	-	10,726	(10,726)	-	-
101000	710566	Facilities-NC Sullivan Arena	3,210	13	3,223	-	3,223	(3,223)	-	-
101000	710569	Facilities-NC Egan Center	6,619	-	6,619	-	6,619	(6,619)	-	-
101000	710572	Facilities-NC Dena'ina Center	-	-	-	-	-	-	-	-
101000	710575	Facilities-NC Performing Arts Center	35,523	-	35,523	-	35,523	(35,523)	-	-
101000	710581	Facilities-NC Anchorage Museum	3,539	-	3,539	-	3,539	(3,539)	-	-
101000	710583	Facilities-Permit Center	-	1	1	-	1	(1)	-	-
101000	710800	Facility Capital Improvements	1,151,475	6,628	1,158,103	882,019	276,084	(1,158,103)	-	-
Total Indirect Central Services 100% of			69,335,046	24,519,381	93,854,428	4,233,738	89,620,690	(97,802,097)	25,519	-

Central Service Adjustment for Non-allowable Expenditures and Overbillings

Total Amount Over Billed	-
Total Amount Non-Allowable (1)	4,233,738
Total CarryForward Adjustment if Over Billed (2)	-
Total Adjustment	4,233,738
Total Billings	97,802,097
Adjustment Percentage for Non-Allowable Costs and Overbillings	4.33%

CSP			Fiscal		Cost		
Cat.	Department	Cost Center Description	Year	Fund	Center	Acct	Actuals
CS	Assembly	Clerk-Agenda Control	2021	101000	102003	501010	119,035.70
CS	Assembly	Clerk-Agenda Control	2021	101000	102003	501020	2,228.00
CS	Assembly	Clerk-Agenda Control	2021	101000	102003	501040	17,034.99
CS	Assembly	Clerk-Agenda Control	2021	101000	102003	501080	30,315.13
CS	Assembly	Clerk-Agenda Control	2021	101000	102003	501090	91.68
CS	Assembly	Clerk-Agenda Control	2021	101000	102003	501100	57,806.88
CS	Assembly	Clerk-Agenda Control	2021	101000	102003	501105	10,333.57
CS	Assembly	Clerk-Agenda Control	2021	101000	102003	501115	53.40
CS	Assembly	Clerk-Agenda Control	2021	101000	102003	501130	275.28
CS	Assembly	Clerk-Agenda Control	2021	101000	102003	501140	182.40
CS	Assembly	Clerk-Municipal Audit	2021	101000	102006	530380	466,584.00
CS	Assembly	Clerk-Liquor License	2021	101000	102007	501010	41,149.34
CS	Assembly	Clerk-Liquor License	2021	101000	102007	501020	217.49
CS	Assembly	Clerk-Liquor License	2021	101000	102007	501040	2,945.54
CS	Assembly	Clerk-Liquor License	2021	101000	102007	501080	9,687.19
CS	Assembly	Clerk-Liquor License	2021	101000	102007	501090	30.72
CS	Assembly	Clerk-Liquor License	2021	101000	102007	501100	19,269.12
CS	Assembly	Clerk-Liquor License	2021	101000	102007	501105	3,269.46
CS	Assembly	Clerk-Liquor License	2021	101000	102007	501115	17.88
CS	Assembly	Clerk-Liquor License	2021	101000	102007	501130	87.67
CS	Assembly	Clerk-Liquor License	2021	101000	102007	501140	59.33
CS	Assembly	Ombudsman	2021	101000	103000	501010	170,832.07
CS	Assembly	Ombudsman	2021	101000	103000	501040	8,888.60
CS	Assembly	Ombudsman	2021	101000	103000	501080	38,474.90
CS	Assembly	Ombudsman	2021	101000	103000	501090	81.60
CS	Assembly	Ombudsman	2021	101000	103000	501100	29,892.00
CS	Assembly	Ombudsman	2021	101000	103000	501105	13,656.15
CS	Assembly	Ombudsman	2021	101000	103000	501115	47.52
CS	Assembly	Ombudsman	2021	101000	103000	501130	357.54
CS	Assembly	Ombudsman	2021	101000	103000	501140	230.25
CS	Assembly	Ombudsman	2021	101000	103000	511000	146.12
CS	Assembly	Ombudsman	2021	101000	103000	511010	196.76
CS	Assembly	Ombudsman	2021	101000	103000	511050	187.20
CS	Assembly	Ombudsman	2021	101000	103000	540040	1,500.00
CS	Assembly	Ombudsman	2021	101000	103000	540200	3,475.67
CS	Assembly	Ombudsman	2021	101000	103000	540242	251.93
CS	Assembly	Ombudsman	2021	101000	103000	540640	420.00
CS	Assembly	Ombudsman	2021	101000	103000	540650	508.19
CS	Internal Audit	Internal Audit	2021	101000	106000	501010	420,438.98
CS	Internal Audit	Internal Audit	2021	101000	106000	501040	52,852.77
CS	Internal Audit	Internal Audit	2021	101000	106000	501080	101,030.44
CS	Internal Audit	Internal Audit	2021	101000	106000	501090	224.40
CS	Internal Audit	Internal Audit	2021	101000	106000	501100	127,153.00
CS	Internal Audit	Internal Audit	2021	101000	106000	501105	35,840.78
CS	Internal Audit	Internal Audit	2021	101000	106000	501115	132.66
CS	Internal Audit	Internal Audit	2021	101000	106000	501130	946.76
CS	Internal Audit	Internal Audit	2021	101000	106000	501140	620.92
CS	Internal Audit	Internal Audit	2021	101000	106000	511000	481.22
CS	Internal Audit	Internal Audit	2021	101000	106000	511010	43.40
CS	Internal Audit	Internal Audit	2021	101000	106000	511330	62.32
CS	Internal Audit	Internal Audit	2021	101000	106000	540040	825.00
CS	Internal Audit	Internal Audit	2021	101000	106000	540050	1,180.00
CS	Internal Audit	Internal Audit	2021	101000	106000	540242	631.79
CS	Internal Audit	Internal Audit	2021	101000	106000	540300	3,960.00
CS	Mayor	Mayor	2021	101000	111100	501010	801,174.09
CS	Mayor	Mayor	2021	101000	111100	501020	206.44
CS	Mayor	Mayor	2021	101000	111100	501040	77,111.53
CS	Mayor	Mayor	2021	101000	111100	501080	170,024.70
CS	Mayor	Mayor	2021	101000	111100	501090	330.74

CSP Cat.	Department	Cost Center Description	Fiscal Year	Fund	Cost Center	Acct	Actuals
CS	Mayor	Mayor	2021	101000	111100	501100	151,161.57
CS	Mayor	Mayor	2021	101000	111100	501105	67,376.58
CS	Mayor	Mayor	2021	101000	111100	501115	194.62
CS	Mayor	Mayor	2021	101000	111100	501130	1,502.07
CS	Mayor	Mayor	2021	101000	111100	501140	1,056.72
CS	Mayor	Mayor	2021	101000	111100	511000	11,451.58
CS	Mayor	Mayor	2021	101000	111100	511010	6,619.98
CS	Mayor	Mayor	2021	101000	111100	511030	637.38
CS	Mayor	Mayor	2021	101000	111100	511050	693.00
CS	Mayor	Mayor	2021	101000	111100	511140	4.50
CS	Mayor	Mayor	2021	101000	111100	511170	162.10
CS	Mayor	Mayor	2021	101000	111100	511205	500.00
CS	Mayor	Mayor	2021	101000	111100	511330	242.47
CS	Mayor	Mayor	2021	101000	111100	511360	1,766.00
CS	Mayor	Mayor	2021	101000	111100	520040	293.70
CS	Mayor	Mayor	2021	101000	111100	520050	645.61
CS	Mayor	Mayor	2021	101000	111100	520060	209.99
CS	Mayor	Mayor	2021	101000	111100	520070	288.00
CS	Mayor	Mayor	2021	101000	111100	520080	175.00
CS	Mayor	Mayor	2021	101000	111100	520090	16.00
CS	Mayor	Mayor	2021	101000	111100	530060	475.50
CS	Mayor	Mayor	2021	101000	111100	530380	79,162.08
CS	Mayor	Mayor	2021	101000	111100	540040	4,400.00
CS	Mayor	Mayor	2021	101000	111100	540050	100.00
CS	Mayor	Mayor	2021	101000	111100	540150	195.00
CS	Mayor	Mayor	2021	101000	111100	540170	5,586.74
CS	Mayor	Mayor	2021	101000	111100	540190	7,435.72
CS	Mayor	Mayor	2021	101000	111100	540200	246.16
CS	Mayor	Mayor	2021	101000	111100	540242	823.42
CS	Mayor	Mayor	2021	101000	111100	540271	822.14
CS	Mayor	Mayor	2021	101000	111100	540280	6,332.00
CS	Mayor	Mayor	2021	101000	111100	540300	2,398.00
CS	Mayor	Mayor	2021	101000	111100	540640	237.25
CS	Mayor	Mayor	2021	101000	111100	540650	5,236.38
CS	Mayor	Mayor	2021	101000	111100	590200	1,229.96
CS	Mayor	Mayor	2021	101000	111100	590210	7,313.95
CS	Equity & Justice	Office of Equal Opportunity	2021	101000	113200	501010	150,318.94
CS	Equity & Justice	Office of Equal Opportunity	2021	101000	113200	501020	1,894.65
CS	Equity & Justice	Office of Equal Opportunity	2021	101000	113200	501040	19,915.89
CS	Equity & Justice	Office of Equal Opportunity	2021	101000	113200	501080	35,095.42
CS	Equity & Justice	Office of Equal Opportunity	2021	101000	113200	501090	81.60
CS	Equity & Justice	Office of Equal Opportunity	2021	101000	113200	501100	29,892.00
CS	Equity & Justice	Office of Equal Opportunity	2021	101000	113200	501105	13,088.94
CS	Equity & Justice	Office of Equal Opportunity	2021	101000	113200	501115	47.52
CS	Equity & Justice	Office of Equal Opportunity	2021	101000	113200	501130	343.20
CS	Equity & Justice	Office of Equal Opportunity	2021	101000	113200	501140	206.16
CS	Equity & Justice	Office of Equal Opportunity	2021	101000	113200	511000	323.61
CS	Equity & Justice	Office of Equal Opportunity	2021	101000	113200	511010	1,114.48
CS	Equity & Justice	Office of Equal Opportunity	2021	101000	113200	520080	1,840.00
CS	Equity & Justice	Office of Equal Opportunity	2021	101000	113200	530060	50.00
CS	Equity & Justice	Office of Equal Opportunity	2021	101000	113200	540050	30.00
CS	Equity & Justice	Office of Equal Opportunity	2021	101000	113200	540170	105.63
CS	Equity & Justice	Office of Equal Opportunity	2021	101000	113200	540190	1,718.49
CS	Equity & Justice	Office of Equal Opportunity	2021	101000	113200	540242	189.93
CS	Municipal Attorney	Civil Law	2021	101000	115100	501010	1,350,482.69
CS	Municipal Attorney	Civil Law	2021	101000	115100	501020	37.41
CS	Municipal Attorney	Civil Law	2021	101000	115100	501040	134,398.55
CS	Municipal Attorney	Civil Law	2021	101000	115100	501080	315,376.79
CS	Municipal Attorney	Civil Law	2021	101000	115100	501090	576.68

CSP Cat.	Department	Cost Center Description	Fiscal Year	Fund	Cost Center	Acct	Actuals
CS	Municipal Attorney	Civil Law	2021	101000	115100	501100	326,338.50
CS	Municipal Attorney	Civil Law	2021	101000	115100	501105	111,364.91
CS	Municipal Attorney	Civil Law	2021	101000	115100	501115	340.56
CS	Municipal Attorney	Civil Law	2021	101000	115100	501130	2,964.21
CS	Municipal Attorney	Civil Law	2021	101000	115100	501140	1,930.31
CS	Municipal Attorney	Civil Law	2021	101000	115100	511000	2,903.40
CS	Municipal Attorney	Civil Law	2021	101000	115100	511010	1,161.87
CS	Municipal Attorney	Civil Law	2021	101000	115100	511030	112.32
CS	Municipal Attorney	Civil Law	2021	101000	115100	511050	4,598.64
CS	Municipal Attorney	Civil Law	2021	101000	115100	530360	1,816.90
CS	Municipal Attorney	Civil Law	2021	101000	115100	530380	37,853.62
CS	Municipal Attorney	Civil Law	2021	101000	115100	540030	180.00
CS	Municipal Attorney	Civil Law	2021	101000	115100	540040	5,400.00
CS	Municipal Attorney	Civil Law	2021	101000	115100	540050	215.00
CS	Municipal Attorney	Civil Law	2021	101000	115100	540170	4,119.10
CS	Municipal Attorney	Civil Law	2021	101000	115100	540242	1,895.12
CS	Municipal Attorney	Civil Law	2021	101000	115100	540620	1,766.51
CS	Municipal Attorney	Civil Law	2021	101000	115100	540640	14,318.35
CS	Municipal Attorney	Criminal	2021	101000	115200	501010	1,796,038.52
CS	Municipal Attorney	Criminal	2021	101000	115200	501020	15,201.44
CS	Municipal Attorney	Criminal	2021	101000	115200	501040	225,227.00
CS	Municipal Attorney	Criminal	2021	101000	115200	501080	433,815.48
CS	Municipal Attorney	Criminal	2021	101000	115200	501090	1,033.73
CS	Municipal Attorney	Criminal	2021	101000	115200	501100	578,477.50
CS	Municipal Attorney	Criminal	2021	101000	115200	501105	153,415.29
CS	Municipal Attorney	Criminal	2021	101000	115200	501115	605.88
CS	Municipal Attorney	Criminal	2021	101000	115200	501130	4,042.07
CS	Municipal Attorney	Criminal	2021	101000	115200	501140	2,655.99
CS	Municipal Attorney	Criminal	2021	101000	115200	501240	3.31
CS	Municipal Attorney	Criminal	2021	101000	115200	511000	7,830.40
CS	Municipal Attorney	Criminal	2021	101000	115200	511010	3,119.15
CS	Municipal Attorney	Criminal	2021	101000	115200	511030	7.96
CS	Municipal Attorney	Criminal	2021	101000	115200	511050	195.80
CS	Municipal Attorney	Criminal	2021	101000	115200	511140	195.00
CS	Municipal Attorney	Criminal	2021	101000	115200	511330	32.01
CS	Municipal Attorney	Criminal	2021	101000	115200	530060	215.50
CS	Municipal Attorney	Criminal	2021	101000	115200	530090	1,085.00
CS	Municipal Attorney	Criminal	2021	101000	115200	530360	6,932.50
CS	Municipal Attorney	Criminal	2021	101000	115200	530380	6,216.89
CS	Municipal Attorney	Criminal	2021	101000	115200	540030	23,423.74
CS	Municipal Attorney	Criminal	2021	101000	115200	540040	6,920.00
CS	Municipal Attorney	Criminal	2021	101000	115200	540050	45.00
CS	Municipal Attorney	Criminal	2021	101000	115200	540170	3,831.19
CS	Municipal Attorney	Criminal	2021	101000	115200	540242	3,993.35
CS	Municipal Attorney	Criminal	2021	101000	115200	540300	3,560.00
CS	Municipal Attorney	Criminal	2021	101000	115200	540620	2,868.49
CS	Municipal Attorney	Criminal	2021	101000	115200	540640	25,052.47
CS	Municipal Attorney	Administrative Hearing	2021	101000	115300	501010	168,096.12
CS	Municipal Attorney	Administrative Hearing	2021	101000	115300	501040	16,001.37
CS	Municipal Attorney	Administrative Hearing	2021	101000	115300	501080	40,198.44
CS	Municipal Attorney	Administrative Hearing	2021	101000	115300	501090	81.60
CS	Municipal Attorney	Administrative Hearing	2021	101000	115300	501100	51,384.00
CS	Municipal Attorney	Administrative Hearing	2021	101000	115300	501105	13,818.13
CS	Municipal Attorney	Administrative Hearing	2021	101000	115300	501115	47.52
CS	Municipal Attorney	Administrative Hearing	2021	101000	115300	501130	366.57
CS	Municipal Attorney	Administrative Hearing	2021	101000	115300	501140	246.65
CS	Municipal Attorney	Muni Attorney Administration	2021	101000	115400	501010	209,104.85
CS	Municipal Attorney	Muni Attorney Administration	2021	101000	115400	501040	2,913.90
CS	Municipal Attorney	Muni Attorney Administration	2021	101000	115400	501080	47,383.60

CSP Cat.	Department	Cost Center Description	Fiscal Year	Fund	Cost Center	Acct	Actuals
CS	Municipal Attorney	Muni Attorney Administration	2021	101000	115400	501090	85.00
CS	Municipal Attorney	Muni Attorney Administration	2021	101000	115400	501100	32,033.00
CS	Municipal Attorney	Muni Attorney Administration	2021	101000	115400	501105	16,408.81
CS	Municipal Attorney	Muni Attorney Administration	2021	101000	115400	501115	49.50
CS	Municipal Attorney	Muni Attorney Administration	2021	101000	115400	501130	451.38
CS	Municipal Attorney	Muni Attorney Administration	2021	101000	115400	501140	279.99
CS	Municipal Attorney	Muni Attorney Administration	2021	101000	115400	530060	41.00
CS	Municipal Attorney	Muni Attorney Administration	2021	101000	115400	530360	5,656.00
CS	Municipal Attorney	Muni Attorney Administration	2021	101000	115400	540040	660.00
CS	Municipal Attorney	Muni Attorney Administration	2021	101000	115400	540242	684.17
CS	Municipal Manager	Muni Manager Admin	2021	101000	121000	501010	289,328.53
CS	Municipal Manager	Muni Manager Admin	2021	101000	121000	501040	28,230.72
CS	Municipal Manager	Muni Manager Admin	2021	101000	121000	501080	63,058.20
CS	Municipal Manager	Muni Manager Admin	2021	101000	121000	501090	105.40
CS	Municipal Manager	Muni Manager Admin	2021	101000	121000	501100	64,155.00
CS	Municipal Manager	Muni Manager Admin	2021	101000	121000	501105	19,898.36
CS	Municipal Manager	Muni Manager Admin	2021	101000	121000	501115	61.38
CS	Municipal Manager	Muni Manager Admin	2021	101000	121000	501130	674.69
CS	Municipal Manager	Muni Manager Admin	2021	101000	121000	501140	377.81
CS	Municipal Manager	Muni Manager Admin	2021	101000	121000	511000	993.80
CS	Municipal Manager	Muni Manager Admin	2021	101000	121000	511010	1,874.28
CS	Municipal Manager	Muni Manager Admin	2021	101000	121000	511080	39.46
CS	Municipal Manager	Muni Manager Admin	2021	101000	121000	511170	76.86
CS	Municipal Manager	Muni Manager Admin	2021	101000	121000	511330	376.63
CS	Municipal Manager	Muni Manager Admin	2021	101000	121000	520040	213.71
CS	Municipal Manager	Muni Manager Admin	2021	101000	121000	520060	462.00
CS	Municipal Manager	Muni Manager Admin	2021	101000	121000	520070	168.00
CS	Municipal Manager	Muni Manager Admin	2021	101000	121000	530060	87.00
CS	Municipal Manager	Muni Manager Admin	2021	101000	121000	530090	2,100.00
CS	Municipal Manager	Muni Manager Admin	2021	101000	121000	530360	237.25
CS	Municipal Manager	Muni Manager Admin	2021	101000	121000	530380	2,143.50
CS	Municipal Manager	Muni Manager Admin	2021	101000	121000	540040	200.00
CS	Municipal Manager	Muni Manager Admin	2021	101000	121000	540050	50.00
CS	Municipal Manager	Muni Manager Admin	2021	101000	121000	540070	175.00
CS	Municipal Manager	Muni Manager Admin	2021	101000	121000	540170	1,275.39
CS	Municipal Manager	Muni Manager Admin	2021	101000	121000	540242	542.18
CS	Municipal Manager	Muni Manager Admin	2021	101000	121000	540300	1,545.00
CS	Municipal Manager	Muni Manager Admin	2021	101000	121000	540650	9,606.27
CS	Municipal Manager	Muni Manager Admin	2021	101000	121000	590230	1,325.22
CS	Real Estate	Leases-Parking Garage	2021	101000	122301	540280	91,980.00
CS	Real Estate	Leases-City Hall	2021	101000	122302	540280	3,631,151.00
CS	Real Estate	Leases-City Hall	2021	101000	122302	580530	187,950.00
CS	Real Estate	Leases-ERTC	2021	101000	122303	530380	215.00
CS	Real Estate	Leases-ERTC	2021	101000	122303	540280	223,864.90
CS	Real Estate	Leases-ERTC	2021	101000	122303	580530	120,000.00
CS	Real Estate	Leases-Libraries	2021	101000	122304	540280	223,031.28
CS	Real Estate	Leases-Traffic	2021	101000	122306	540280	48,000.00
CS	Real Estate	Leases-Recreation	2021	101000	122307	540280	368,745.00
CS	Real Estate	Leases-Permit Center	2021	101000	122309	540280	2,058,563.64
CS	Real Estate	Leases-Police	2021	101000	122310	540280	37,431.58
CS	Municipal Manager	Office of Emergency Management	2021	101000	124200	501010	218,326.77
CS	Municipal Manager	Office of Emergency Management	2021	101000	124200	501020	67.90
CS	Municipal Manager	Office of Emergency Management	2021	101000	124200	501040	26,450.51
CS	Municipal Manager	Office of Emergency Management	2021	101000	124200	501080	53,450.20
CS	Municipal Manager	Office of Emergency Management	2021	101000	124200	501090	114.23
CS	Municipal Manager	Office of Emergency Management	2021	101000	124200	501100	57,604.93
CS	Municipal Manager	Office of Emergency Management	2021	101000	124200	501105	19,504.27
CS	Municipal Manager	Office of Emergency Management	2021	101000	124200	501115	65.26
CS	Municipal Manager	Office of Emergency Management	2021	101000	124200	501130	499.91

CSP Cat.	Department	Cost Center Description	Fiscal Year	Fund	Cost Center	Acct	Actuals
CS	Municipal Manager	Office of Emergency Management	2021	101000	124200	501140	311.55
CS	Municipal Manager	Office of Emergency Management	2021	101000	124200	511000	1,484.81
CS	Municipal Manager	Office of Emergency Management	2021	101000	124200	511010	300.57
CS	Municipal Manager	Office of Emergency Management	2021	101000	124200	511050	363.39
CS	Municipal Manager	Office of Emergency Management	2021	101000	124200	511330	326.85
CS	Municipal Manager	Office of Emergency Management	2021	101000	124200	530060	87.95
CS	Municipal Manager	Office of Emergency Management	2021	101000	124200	530360	1,589.00
CS	Municipal Manager	Office of Emergency Management	2021	101000	124200	530380	970.99
CS	Municipal Manager	Office of Emergency Management	2021	101000	124200	540040	3,065.99
CS	Municipal Manager	Office of Emergency Management	2021	101000	124200	540170	11,008.72
CS	Municipal Manager	Office of Emergency Management	2021	101000	124200	540271	959.14
CS	Municipal Manager	Office of Emergency Management	2021	101000	124200	540300	16,338.00
CS	Municipal Manager	Office of Emergency Management	2021	101000	124200	540650	387.56
CS	Municipal Manager	Office of Emergency Management	2021	101000	124200	550080	2,200.26
CS	Municipal Manager	Office of Emergency Management	2021	101000	124200	580010	427,120.29
CS	Municipal Manager	Office of Emergency Management	2021	101000	124200	580020	102,890.41
CS	Municipal Manager	Office of Emergency Management	2021	101000	124200	580030	3.43
CS	Municipal Manager	Office of Emergency Management	2021	101000	124200	580140	346.72
CS	Municipal Manager	Office of Emergency Management	2021	101000	124200	580530	11,574.00
CS	Municipal Manager	Risk Management	2021	101000	124700	501010	168,591.21
CS	Municipal Manager	Risk Management	2021	101000	124700	501040	9,789.95
CS	Municipal Manager	Risk Management	2021	101000	124700	501080	39,029.06
CS	Municipal Manager	Risk Management	2021	101000	124700	501090	81.55
CS	Municipal Manager	Risk Management	2021	101000	124700	501100	51,352.82
CS	Municipal Manager	Risk Management	2021	101000	124700	501105	13,319.96
CS	Municipal Manager	Risk Management	2021	101000	124700	501115	47.52
CS	Municipal Manager	Risk Management	2021	101000	124700	501130	354.82
CS	Municipal Manager	Risk Management	2021	101000	124700	501140	240.96
CS	Municipal Manager	Risk Management	2021	101000	124700	511000	4,162.60
CS	Municipal Manager	Risk Management	2021	101000	124700	530360	1,068.00
CS	Municipal Manager	Risk Management	2021	101000	124700	540242	379.85
CS	Municipal Manager	Safety	2021	101000	124900	501010	77,586.38
CS	Municipal Manager	Safety	2021	101000	124900	501040	8,144.12
CS	Municipal Manager	Safety	2021	101000	124900	501080	19,461.48
CS	Municipal Manager	Safety	2021	101000	124900	501090	40.80
CS	Municipal Manager	Safety	2021	101000	124900	501100	4,200.00
CS	Municipal Manager	Safety	2021	101000	124900	501105	6,785.54
CS	Municipal Manager	Safety	2021	101000	124900	501115	23.76
CS	Municipal Manager	Safety	2021	101000	124900	501130	168.52
CS	Municipal Manager	Safety	2021	101000	124900	501140	113.76
CS	Municipal Manager	Safety	2021	101000	124900	511130	700.00
CS	Municipal Manager	Safety	2021	101000	124900	530380	27,600.00
CS	Municipal Manager	Safety	2021	101000	124900	540242	189.93
CS	Finance	Controller Administration	2021	101000	132100	501010	119,566.54
CS	Finance	Controller Administration	2021	101000	132100	501040	13,422.10
CS	Finance	Controller Administration	2021	101000	132100	501080	27,735.24
CS	Finance	Controller Administration	2021	101000	132100	501090	40.80
CS	Finance	Controller Administration	2021	101000	132100	501100	25,692.00
CS	Finance	Controller Administration	2021	101000	132100	501105	6,322.19
CS	Finance	Controller Administration	2021	101000	132100	501115	23.76
CS	Finance	Controller Administration	2021	101000	132100	501130	265.01
CS	Finance	Controller Administration	2021	101000	132100	501140	168.72
CS	Finance	Controller Administration	2021	101000	132100	511010	4,270.72
CS	Finance	Controller Administration	2021	101000	132100	511410	395.00
CS	Finance	Controller Administration	2021	101000	132100	530360	411.00
CS	Finance	Controller Administration	2021	101000	132100	530380	910.00
CS	Finance	Controller Administration	2021	101000	132100	540040	1,753.00
CS	Finance	Controller Administration	2021	101000	132100	540050	3,619.00
CS	Finance	Controller Administration	2021	101000	132100	540170	1,966.17

CSP			Fiscal		Cost		
Cat.	Department	Cost Center Description	Year	Fund	Center	Acct	Actuals
CS	Finance	Controller Administration	2021	101000	132100	540650	1,745.93
CS	Finance	Controller Administration	2021	101000	132100	590230	4,580.30
CS	Finance	Central Accounting	2021	101000	132200	501010	1,183,184.71
CS	Finance	Central Accounting	2021	101000	132200	501020	96,670.11
CS	Finance	Central Accounting	2021	101000	132200	501040	175,613.08
CS	Finance	Central Accounting	2021	101000	132200	501080	298,001.85
CS	Finance	Central Accounting	2021	101000	132200	501090	552.50
CS	Finance	Central Accounting	2021	101000	132200	501100	297,158.00
CS	Finance	Central Accounting	2021	101000	132200	501105	109,592.89
CS	Finance	Central Accounting	2021	101000	132200	501115	322.74
CS	Finance	Central Accounting	2021	101000	132200	501130	2,909.96
CS	Finance	Central Accounting	2021	101000	132200	501140	1,700.58
CS	Finance	Central Accounting	2021	101000	132200	501240	54.91
CS	Finance	Central Accounting	2021	101000	132200	530060	386.50
CS	Finance	Central Accounting	2021	101000	132200	540170	(753.24)
CS	Finance	Central Accounting	2021	101000	132200	540242	2,256.95
CS	Finance	Central Accounting	2021	101000	132200	540650	6.22
CS	Information Technology	Payroll	2021	101000	132300	501010	781,254.87
CS	Information Technology	Payroll	2021	101000	132300	501020	6,553.62
CS	Information Technology	Payroll	2021	101000	132300	501040	67,223.88
CS	Information Technology	Payroll	2021	101000	132300	501080	190,081.29
CS	Information Technology	Payroll	2021	101000	132300	501090	484.50
CS	Information Technology	Payroll	2021	101000	132300	501100	215,991.50
CS	Information Technology	Payroll	2021	101000	132300	501105	65,836.18
CS	Information Technology	Payroll	2021	101000	132300	501115	281.16
CS	Information Technology	Payroll	2021	101000	132300	501130	1,708.17
CS	Information Technology	Payroll	2021	101000	132300	501140	1,149.13
CS	Information Technology	Payroll	2021	101000	132300	511010	262.26
CS	Information Technology	Payroll	2021	101000	132300	530060	26.00
CS	Information Technology	Payroll	2021	101000	132300	530380	8,231.39
CS	Information Technology	Payroll	2021	101000	132300	540070	525.00
CS	Information Technology	Payroll	2021	101000	132300	540242	1,986.02
CS	Finance	Accounts Payable	2021	101000	132400	501010	130,774.76
CS	Finance	Accounts Payable	2021	101000	132400	501020	5,329.92
CS	Finance	Accounts Payable	2021	101000	132400	501040	12,394.90
CS	Finance	Accounts Payable	2021	101000	132400	501080	32,245.68
CS	Finance	Accounts Payable	2021	101000	132400	501090	76.50
CS	Finance	Accounts Payable	2021	101000	132400	501100	46,762.00
CS	Finance	Accounts Payable	2021	101000	132400	501105	11,085.18
CS	Finance	Accounts Payable	2021	101000	132400	501115	43.56
CS	Finance	Accounts Payable	2021	101000	132400	501130	293.14
CS	Finance	Accounts Payable	2021	101000	132400	501140	191.16
CS	Finance	Accounts Payable	2021	101000	132400	530060	26.00
CS	Finance	Accounts Payable	2021	101000	132400	540242	358.12
CS	Finance	Treasury Administration	2021	101000	134100	501010	181,167.91
CS	Finance	Treasury Administration	2021	101000	134100	501020	1,241.29
CS	Finance	Treasury Administration	2021	101000	134100	501040	20,834.04
CS	Finance	Treasury Administration	2021	101000	134100	501080	41,384.88
CS	Finance	Treasury Administration	2021	101000	134100	501090	81.60
CS	Finance	Treasury Administration	2021	101000	134100	501100	51,384.00
CS	Finance	Treasury Administration	2021	101000	134100	501105	15,416.89
CS	Finance	Treasury Administration	2021	101000	134100	501115	47.52
CS	Finance	Treasury Administration	2021	101000	134100	501130	403.55
CS	Finance	Treasury Administration	2021	101000	134100	501140	251.55
CS	Finance	Treasury Administration	2021	101000	134100	511000	1,212.32
CS	Finance	Treasury Administration	2021	101000	134100	511010	258.92
CS	Finance	Treasury Administration	2021	101000	134100	511360	18.99
CS	Finance	Treasury Administration	2021	101000	134100	540040	816.76
CS	Finance	Treasury Administration	2021	101000	134100	540050	38.77

CSP Cat.	Department	Cost Center Description	Fiscal Year	Fund	Cost Center	Acct	Actuals
CS	Finance	Treasury Administration	2021	101000	134100	540220	67.20
CS	Finance	Treasury Administration	2021	101000	134100	540242	472.85
CS	Finance	Treasury Administration	2021	101000	134100	540440	329.88
CS	Finance	Treasury Administration	2021	101000	134100	560010	1,750.00
CS	Finance	Treasury Administration	2021	101000	134100	590210	823.66
CS	Finance	Revenue Management	2021	101000	134200	501010	1,015,305.46
CS	Finance	Revenue Management	2021	101000	134200	501020	14,537.46
CS	Finance	Revenue Management	2021	101000	134200	501040	136,234.51
CS	Finance	Revenue Management	2021	101000	134200	501080	249,057.80
CS	Finance	Revenue Management	2021	101000	134200	501090	645.48
CS	Finance	Revenue Management	2021	101000	134200	501100	380,106.17
CS	Finance	Revenue Management	2021	101000	134200	501105	87,505.77
CS	Finance	Revenue Management	2021	101000	134200	501115	379.56
CS	Finance	Revenue Management	2021	101000	134200	501130	2,329.56
CS	Finance	Revenue Management	2021	101000	134200	501140	1,504.84
CS	Finance	Revenue Management	2021	101000	134200	511000	5,256.30
CS	Finance	Revenue Management	2021	101000	134200	511010	2,980.15
CS	Finance	Revenue Management	2021	101000	134200	511080	15,538.12
CS	Finance	Revenue Management	2021	101000	134200	511090	1,645.00
CS	Finance	Revenue Management	2021	101000	134200	511360	319.96
CS	Finance	Revenue Management	2021	101000	134200	530050	1,722.50
CS	Finance	Revenue Management	2021	101000	134200	530060	85.00
CS	Finance	Revenue Management	2021	101000	134200	530360	2,770.00
CS	Finance	Revenue Management	2021	101000	134200	530380	5,697.74
CS	Finance	Revenue Management	2021	101000	134200	540010	16.72
CS	Finance	Revenue Management	2021	101000	134200	540030	1,240.00
CS	Finance	Revenue Management	2021	101000	134200	540040	4,451.07
CS	Finance	Revenue Management	2021	101000	134200	540200	36,994.00
CS	Finance	Revenue Management	2021	101000	134200	540220	8.96
CS	Finance	Revenue Management	2021	101000	134200	540242	2,832.87
CS	Finance	Revenue Management	2021	101000	134200	540271	179.28
CS	Finance	Revenue Management	2021	101000	134200	540650	701.37
CS	Finance	Revenue Management	2021	101000	134200	570200	4,804.60
CS	Finance	Revenue Management	2021	101000	134200	590210	4,432.56
CS	Finance	Revenue Management	2021	101000	134200	590230	10,831.00
CS	Finance	Tax Billing	2021	101000	134600	501010	271,208.06
CS	Finance	Tax Billing	2021	101000	134600	501020	7,074.13
CS	Finance	Tax Billing	2021	101000	134600	501040	41,800.08
CS	Finance	Tax Billing	2021	101000	134600	501080	66,347.62
CS	Finance	Tax Billing	2021	101000	134600	501090	218.89
CS	Finance	Tax Billing	2021	101000	134600	501100	125,100.61
CS	Finance	Tax Billing	2021	101000	134600	501105	23,037.90
CS	Finance	Tax Billing	2021	101000	134600	501115	130.49
CS	Finance	Tax Billing	2021	101000	134600	501130	606.87
CS	Finance	Tax Billing	2021	101000	134600	501140	393.32
CS	Finance	Tax Billing	2021	101000	134600	511000	10,988.20
CS	Finance	Tax Billing	2021	101000	134600	511010	1,453.84
CS	Finance	Tax Billing	2021	101000	134600	511080	48,986.74
CS	Finance	Tax Billing	2021	101000	134600	511090	4,143.00
CS	Finance	Tax Billing	2021	101000	134600	511360	42.78
CS	Finance	Tax Billing	2021	101000	134600	530050	2,080.00
CS	Finance	Tax Billing	2021	101000	134600	530060	127.00
CS	Finance	Tax Billing	2021	101000	134600	530360	1,431.00
CS	Finance	Tax Billing	2021	101000	134600	530377	5,786.43
CS	Finance	Tax Billing	2021	101000	134600	530380	14,363.25
CS	Finance	Tax Billing	2021	101000	134600	540010	564.30
CS	Finance	Tax Billing	2021	101000	134600	540040	328.31
CS	Finance	Tax Billing	2021	101000	134600	540200	3,250.00
CS	Finance	Tax Billing	2021	101000	134600	540242	1,042.46

CSP			Fiscal		Cost		
Cat.	Department	Cost Center Description	Year	Fund	Center	Acct	Actuals
CS	Finance	Tax Billing	2021	101000	134600	570220	1,208.88
CS	Finance	Tax Billing	2021	101000	134600	590210	2,352.37
CS	Finance	Tax Billing	2021	101000	134600	590230	783.12
CS	Finance	Remittance Processing	2021	101000	134700	501010	104,159.73
CS	Finance	Remittance Processing	2021	101000	134700	501020	2,486.32
CS	Finance	Remittance Processing	2021	101000	134700	501040	8,919.81
CS	Finance	Remittance Processing	2021	101000	134700	501080	24,683.47
CS	Finance	Remittance Processing	2021	101000	134700	501090	81.60
CS	Finance	Remittance Processing	2021	101000	134700	501100	51,384.00
CS	Finance	Remittance Processing	2021	101000	134700	501105	8,504.56
CS	Finance	Remittance Processing	2021	101000	134700	501115	47.52
CS	Finance	Remittance Processing	2021	101000	134700	501130	228.91
CS	Finance	Remittance Processing	2021	101000	134700	501140	147.52
CS	Finance	Remittance Processing	2021	101000	134700	511000	1,281.74
CS	Finance	Remittance Processing	2021	101000	134700	511010	319.05
CS	Finance	Remittance Processing	2021	101000	134700	511360	42.78
CS	Finance	Remittance Processing	2021	101000	134700	530360	4,011.79
CS	Finance	Remittance Processing	2021	101000	134700	540200	14,047.71
CS	Finance	Remittance Processing	2021	101000	134700	540242	286.86
CS	Finance	Remittance Processing	2021	101000	134700	590200	2,470.00
CS	Finance	Remittance Processing	2021	101000	134700	590210	2,772.14
CS	Finance	Remittance Processing	2021	101000	134700	590230	(3,112.00)
CS	Chief Fiscal Officer	Chief Fiscal Officer	2021	101000	137000	501010	205,089.72
CS	Chief Fiscal Officer	Chief Fiscal Officer	2021	101000	137000	501040	31,757.74
CS	Chief Fiscal Officer	Chief Fiscal Officer	2021	101000	137000	501080	46,594.11
CS	Chief Fiscal Officer	Chief Fiscal Officer	2021	101000	137000	501090	81.60
CS	Chief Fiscal Officer	Chief Fiscal Officer	2021	101000	137000	501100	51,384.00
CS	Chief Fiscal Officer	Chief Fiscal Officer	2021	101000	137000	501105	17,615.79
CS	Chief Fiscal Officer	Chief Fiscal Officer	2021	101000	137000	501115	47.52
CS	Chief Fiscal Officer	Chief Fiscal Officer	2021	101000	137000	501130	485.98
CS	Chief Fiscal Officer	Chief Fiscal Officer	2021	101000	137000	501140	276.83
CS	Chief Fiscal Officer	Chief Fiscal Officer	2021	101000	137000	511000	136.80
CS	Chief Fiscal Officer	Chief Fiscal Officer	2021	101000	137000	511010	1,742.34
CS	Chief Fiscal Officer	Chief Fiscal Officer	2021	101000	137000	511030	381.25
CS	Chief Fiscal Officer	Chief Fiscal Officer	2021	101000	137000	511050	690.00
CS	Chief Fiscal Officer	Chief Fiscal Officer	2021	101000	137000	511080	58.76
CS	Chief Fiscal Officer	Chief Fiscal Officer	2021	101000	137000	520040	935.74
CS	Chief Fiscal Officer	Chief Fiscal Officer	2021	101000	137000	530060	41.00
CS	Chief Fiscal Officer	Chief Fiscal Officer	2021	101000	137000	530360	7,304.20
CS	Chief Fiscal Officer	Chief Fiscal Officer	2021	101000	137000	530380	6,307.06
CS	Chief Fiscal Officer	Chief Fiscal Officer	2021	101000	137000	540040	229.00
CS	Chief Fiscal Officer	Chief Fiscal Officer	2021	101000	137000	540050	1,835.75
CS	Chief Fiscal Officer	Chief Fiscal Officer	2021	101000	137000	540170	1,906.87
CS	Chief Fiscal Officer	Chief Fiscal Officer	2021	101000	137000	540242	575.28
CS	Chief Fiscal Officer	Chief Fiscal Officer	2021	101000	137000	540271	150.48
CS	Chief Fiscal Officer	Chief Fiscal Officer	2021	101000	137000	540650	2,262.53
CS	Chief Fiscal Officer	Chief Fiscal Officer	2021	101000	137000	570210	7,245.95
CS	Chief Fiscal Officer	Chief Fiscal Officer	2021	101000	137000	590210	1,817.22
CS	Purchasing	Purchasing Services	2021	101000	138100	501010	1,066,163.66
CS	Purchasing	Purchasing Services	2021	101000	138100	501020	27,086.99
CS	Purchasing	Purchasing Services	2021	101000	138100	501040	136,848.27
CS	Purchasing	Purchasing Services	2021	101000	138100	501080	252,291.16
CS	Purchasing	Purchasing Services	2021	101000	138100	501090	540.60
CS	Purchasing	Purchasing Services	2021	101000	138100	501100	273,495.00
CS	Purchasing	Purchasing Services	2021	101000	138100	501105	93,464.51
CS	Purchasing	Purchasing Services	2021	101000	138100	501115	316.80
CS	Purchasing	Purchasing Services	2021	101000	138100	501130	2,449.51
CS	Purchasing	Purchasing Services	2021	101000	138100	501140	1,488.75
CS	Purchasing	Purchasing Services	2021	101000	138100	501240	1.07

CSP			Fiscal		Cost		
Cat.	Department	Cost Center Description	Year	Fund	Center	Acct	Actuals
CS	Purchasing	Purchasing Services	2021	101000	138100	511000	15,922.03
CS	Purchasing	Purchasing Services	2021	101000	138100	511010	4,266.30
CS	Purchasing	Purchasing Services	2021	101000	138100	520080	595.00
CS	Purchasing	Purchasing Services	2021	101000	138100	530060	181.00
CS	Purchasing	Purchasing Services	2021	101000	138100	530360	3,938.50
CS	Purchasing	Purchasing Services	2021	101000	138100	530380	873.32
CS	Purchasing	Purchasing Services	2021	101000	138100	540040	820.00
CS	Purchasing	Purchasing Services	2021	101000	138100	540050	1,899.00
CS	Purchasing	Purchasing Services	2021	101000	138100	540170	1,428.85
CS	Purchasing	Purchasing Services	2021	101000	138100	540242	2,540.03
CS	Purchasing	Purchasing Services	2021	101000	138100	540300	1,380.00
CS	Purchasing	Purchasing Services	2021	101000	138100	540650	453.44
CS	Purchasing	Purchasing Services	2021	101000	138100	570210	1,968.13
CS	Purchasing	Purchasing Services	2021	101000	138100	590210	9,640.32
CS	Management & Budget	Management & Budget	2021	101000	139100	501010	481,380.11
CS	Management & Budget	Management & Budget	2021	101000	139100	501020	25,832.59
CS	Management & Budget	Management & Budget	2021	101000	139100	501040	32,964.02
CS	Management & Budget	Management & Budget	2021	101000	139100	501080	114,925.30
CS	Management & Budget	Management & Budget	2021	101000	139100	501090	195.96
CS	Management & Budget	Management & Budget	2021	101000	139100	501100	124,409.59
CS	Management & Budget	Management & Budget	2021	101000	139100	501105	40,537.24
CS	Management & Budget	Management & Budget	2021	101000	139100	501115	114.93
CS	Management & Budget	Management & Budget	2021	101000	139100	501130	1,072.28
CS	Management & Budget	Management & Budget	2021	101000	139100	501140	663.09
CS	Management & Budget	Management & Budget	2021	101000	139100	511010	3,896.27
CS	Management & Budget	Management & Budget	2021	101000	139100	511080	113.70
CS	Management & Budget	Management & Budget	2021	101000	139100	511360	326.35
CS	Management & Budget	Management & Budget	2021	101000	139100	511370	200.00
CS	Management & Budget	Management & Budget	2021	101000	139100	530060	63.00
CS	Management & Budget	Management & Budget	2021	101000	139100	530380	71,809.65
CS	Management & Budget	Management & Budget	2021	101000	139100	540040	954.00
CS	Management & Budget	Management & Budget	2021	101000	139100	540070	(575.50)
CS	Management & Budget	Management & Budget	2021	101000	139100	540170	1,003.55
CS	Management & Budget	Management & Budget	2021	101000	139100	540200	3,412.50
CS	Management & Budget	Management & Budget	2021	101000	139100	540242	672.06
CS	Management & Budget	Management & Budget	2021	101000	139100	540271	6,779.28
CS	Management & Budget	Management & Budget	2021	101000	139100	540640	237.25
CS	Management & Budget	Management & Budget	2021	101000	139100	560010	270.00
CS	Information Technology	Reprographics	2021	101000	142300	501010	255,553.85
CS	Information Technology	Reprographics	2021	101000	142300	501020	484.60
CS	Information Technology	Reprographics	2021	101000	142300	501040	64,648.10
CS	Information Technology	Reprographics	2021	101000	142300	501080	59,689.69
CS	Information Technology	Reprographics	2021	101000	142300	501090	198.53
CS	Information Technology	Reprographics	2021	101000	142300	501100	100,979.66
CS	Information Technology	Reprographics	2021	101000	142300	501105	24,264.12
CS	Information Technology	Reprographics	2021	101000	142300	501115	114.40
CS	Information Technology	Reprographics	2021	101000	142300	501130	637.34
CS	Information Technology	Reprographics	2021	101000	142300	501140	359.09
CS	Information Technology	Reprographics	2021	101000	142300	511000	41,415.61
CS	Information Technology	Reprographics	2021	101000	142300	511010	87.42
CS	Information Technology	Reprographics	2021	101000	142300	511050	784.96
CS	Information Technology	Reprographics	2021	101000	142300	511080	194,106.37
CS	Information Technology	Reprographics	2021	101000	142300	511330	1,730.05
CS	Information Technology	Reprographics	2021	101000	142300	511380	1,489.45
CS	Information Technology	Reprographics	2021	101000	142300	530360	3,645.00
CS	Information Technology	Reprographics	2021	101000	142300	540160	19,348.05
CS	Information Technology	Reprographics	2021	101000	142300	540200	4,406.94
CS	Information Technology	Reprographics	2021	101000	142300	540242	956.85
CS	Information Technology	Reprographics	2021	101000	142300	540250	128,113.81

CSP Cat.	Department	Cost Center Description	Fiscal Year	Fund	Cost Center	Acct	Actuals
CS	Information Technology	Reprographics	2021	101000	142300	540271	7,185.00
CS	Information Technology	Reprographics	2021	101000	142300	540300	5,016.00
CS	Information Technology	Reprographics	2021	101000	142300	570200	15,295.00
CS	Information Technology	Reprographics	2021	101000	142300	590210	1,656.46
CS	Information Technology	Records Management	2021	101000	142400	501010	82,641.60
CS	Information Technology	Records Management	2021	101000	142400	501040	7,215.95
CS	Information Technology	Records Management	2021	101000	142400	501080	20,071.34
CS	Information Technology	Records Management	2021	101000	142400	501090	52.70
CS	Information Technology	Records Management	2021	101000	142400	501100	26,917.00
CS	Information Technology	Records Management	2021	101000	142400	501105	6,807.37
CS	Information Technology	Records Management	2021	101000	142400	501115	29.70
CS	Information Technology	Records Management	2021	101000	142400	501130	180.02
CS	Information Technology	Records Management	2021	101000	142400	501140	120.07
CS	Information Technology	Records Management	2021	101000	142400	511410	3,328.00
CS	Information Technology	Records Management	2021	101000	142400	530380	43,309.88
CS	Information Technology	Records Management	2021	101000	142400	540242	77.50
CS	Information Technology	Records Management	2021	101000	142400	540260	398.00
CS	Information Technology	Records Management	2021	101000	142400	540271	15,588.00
CS	Human Resources	Employee Relations Admin	2021	101000	181000	501010	186,985.39
CS	Human Resources	Employee Relations Admin	2021	101000	181000	501020	11.28
CS	Human Resources	Employee Relations Admin	2021	101000	181000	501040	15,840.72
CS	Human Resources	Employee Relations Admin	2021	101000	181000	501080	42,381.44
CS	Human Resources	Employee Relations Admin	2021	101000	181000	501090	85.00
CS	Human Resources	Employee Relations Admin	2021	101000	181000	501100	53,525.00
CS	Human Resources	Employee Relations Admin	2021	101000	181000	501105	15,124.18
CS	Human Resources	Employee Relations Admin	2021	101000	181000	501115	49.50
CS	Human Resources	Employee Relations Admin	2021	101000	181000	501130	402.91
CS	Human Resources	Employee Relations Admin	2021	101000	181000	501140	266.07
CS	Human Resources	Employee Relations Admin	2021	101000	181000	511000	5,423.63
CS	Human Resources	Employee Relations Admin	2021	101000	181000	511010	1,974.11
CS	Human Resources	Employee Relations Admin	2021	101000	181000	511360	483.62
CS	Human Resources	Employee Relations Admin	2021	101000	181000	511380	5,427.20
CS	Human Resources	Employee Relations Admin	2021	101000	181000	530060	44.00
CS	Human Resources	Employee Relations Admin	2021	101000	181000	530380	875.63
CS	Human Resources	Employee Relations Admin	2021	101000	181000	540170	6,842.66
CS	Human Resources	Employee Relations Admin	2021	101000	181000	540242	323.29
CS	Human Resources	Employee Relations Admin	2021	101000	181000	540271	211.20
CS	Human Resources	Employee Relations Admin	2021	101000	181000	570210	6,230.08
CS	Human Resources	Employee Relations Admin	2021	101000	181000	590210	2,161.16
CS	Human Resources	Labor Relations	2021	101000	184100	501010	593,493.75
CS	Human Resources	Labor Relations	2021	101000	184100	501020	1,441.35
CS	Human Resources	Labor Relations	2021	101000	184100	501040	65,192.27
CS	Human Resources	Labor Relations	2021	101000	184100	501080	136,800.69
CS	Human Resources	Labor Relations	2021	101000	184100	501090	307.70
CS	Human Resources	Labor Relations	2021	101000	184100	501100	195,901.50
CS	Human Resources	Labor Relations	2021	101000	184100	501105	49,436.19
CS	Human Resources	Labor Relations	2021	101000	184100	501115	180.18
CS	Human Resources	Labor Relations	2021	101000	184100	501130	1,313.00
CS	Human Resources	Labor Relations	2021	101000	184100	501140	834.66
CS	Human Resources	Labor Relations	2021	101000	184100	511010	286.74
CS	Human Resources	Labor Relations	2021	101000	184100	530060	64.25
CS	Human Resources	Labor Relations	2021	101000	184100	530380	47,462.88
CS	Human Resources	Labor Relations	2021	101000	184100	540242	1,323.95
CS	Human Resources	Labor Relations	2021	101000	184100	590210	394.64
CS	Human Resources	Employment	2021	101000	184500	501010	887,472.67
CS	Human Resources	Employment	2021	101000	184500	501020	35,079.10
CS	Human Resources	Employment	2021	101000	184500	501040	67,883.21
CS	Human Resources	Employment	2021	101000	184500	501080	216,794.21
CS	Human Resources	Employment	2021	101000	184500	501090	553.18

CSP Cat.	Department	Cost Center Description	Fiscal Year	Fund	Cost Center	Acct	Actuals
CS	Human Resources	Employment	2021	101000	184500	501100	347,270.20
CS	Human Resources	Employment	2021	101000	184500	501105	74,556.86
CS	Human Resources	Employment	2021	101000	184500	501115	323.53
CS	Human Resources	Employment	2021	101000	184500	501130	1,968.49
CS	Human Resources	Employment	2021	101000	184500	501140	1,284.02
CS	Human Resources	Employment	2021	101000	184500	501240	6.95
CS	Human Resources	Employment	2021	101000	184500	520080	5,158.00
CS	Human Resources	Employment	2021	101000	184500	530060	50.75
CS	Human Resources	Employment	2021	101000	184500	530380	36,817.27
CS	Human Resources	Employment	2021	101000	184500	540242	1,489.09
CS	Human Resources	Employment	2021	101000	184500	540260	850.00
CS	Human Resources	Benefits	2021	101000	187100	501010	256,947.15
CS	Human Resources	Benefits	2021	101000	187100	501020	50.48
CS	Human Resources	Benefits	2021	101000	187100	501040	16,708.08
CS	Human Resources	Benefits	2021	101000	187100	501080	58,617.64
CS	Human Resources	Benefits	2021	101000	187100	501090	132.82
CS	Human Resources	Benefits	2021	101000	187100	501100	69,642.28
CS	Human Resources	Benefits	2021	101000	187100	501105	20,206.21
CS	Human Resources	Benefits	2021	101000	187100	501115	76.32
CS	Human Resources	Benefits	2021	101000	187100	501118	225.19
CS	Human Resources	Benefits	2021	101000	187100	501130	526.70
CS	Human Resources	Benefits	2021	101000	187100	501140	353.80
CS	Human Resources	Benefits	2021	101000	187100	530060	36.75
CS	Human Resources	Benefits	2021	101000	187100	530380	72,472.50
CS	Human Resources	Benefits	2021	101000	187100	540242	927.92
CS	Economic & Community [OECD Admin		2021	101000	510500	501010	236,561.66
CS	Economic & Community [OECD Admin		2021	101000	510500	501040	22,597.04
CS	Economic & Community [OECD Admin		2021	101000	510500	501080	54,332.28
CS	Economic & Community [OECD Admin		2021	101000	510500	501090	88.40
CS	Economic & Community [OECD Admin		2021	101000	510500	501100	46,165.50
CS	Economic & Community [OECD Admin		2021	101000	510500	501105	20,101.35
CS	Economic & Community [OECD Admin		2021	101000	510500	501115	51.48
CS	Economic & Community [OECD Admin		2021	101000	510500	501130	563.58
CS	Economic & Community [OECD Admin		2021	101000	510500	501140	332.50
CS	Economic & Community [OECD Admin		2021	101000	510500	511000	177.38
CS	Economic & Community [OECD Admin		2021	101000	510500	511050	1,628.98
CS	Economic & Community [OECD Admin		2021	101000	510500	530060	41.00
CS	Economic & Community [OECD Admin		2021	101000	510500	530360	4,020.86
CS	Economic & Community [OECD Admin		2021	101000	510500	530375	2,323.08
CS	Economic & Community [OECD Admin		2021	101000	510500	530380	2,464.55
CS	Economic & Community [OECD Admin		2021	101000	510500	540040	2,500.00
CS	Economic & Community [OECD Admin		2021	101000	510500	540070	400.00
CS	Economic & Community [OECD Admin		2021	101000	510500	540170	3,572.88
CS	Economic & Community [OECD Admin		2021	101000	510500	540242	379.86
CS	Economic & Community [OECD Admin		2021	101000	510500	540271	310.00
CS	Economic & Community [OECD Data & Analytics		2021	101000	510600	501010	340,866.29
CS	Economic & Community [OECD Data & Analytics		2021	101000	510600	501040	36,233.26
CS	Economic & Community [OECD Data & Analytics		2021	101000	510600	501080	79,755.32
CS	Economic & Community [OECD Data & Analytics		2021	101000	510600	501090	147.90
CS	Economic & Community [OECD Data & Analytics		2021	101000	510600	501100	93,116.00
CS	Economic & Community [OECD Data & Analytics		2021	101000	510600	501105	27,915.16
CS	Economic & Community [OECD Data & Analytics		2021	101000	510600	501115	87.12
CS	Economic & Community [OECD Data & Analytics		2021	101000	510600	501130	749.56
CS	Economic & Community [OECD Data & Analytics		2021	101000	510600	501140	491.42
CS	Economic & Community [OECD Data & Analytics		2021	101000	510600	511090	69.98
CS	Economic & Community [OECD Data & Analytics		2021	101000	510600	511360	1,316.87
CS	Economic & Community [OECD Data & Analytics		2021	101000	510600	511410	30.00
CS	Economic & Community [OECD Data & Analytics		2021	101000	510600	530060	26.00
CS	Economic & Community [OECD Data & Analytics		2021	101000	510600	530380	99,076.55

CSP			Fiscal		Cost		
Cat.	Department	Cost Center Description	Year	Fund	Center	Acct	Actuals
CS	Economic & Community [OECD Data & Analytics		2021	101000	510600	540070	119.88
CS	Economic & Community [OECD Data & Analytics		2021	101000	510600	540200	328,454.00
CS	Economic & Community [OECD Data & Analytics		2021	101000	510600	540242	423.52
CS	Economic & Community [i-team		2021	101000	510800	501010	201,877.58
CS	Economic & Community [i-team		2021	101000	510800	501040	18,578.73
CS	Economic & Community [i-team		2021	101000	510800	501080	47,055.39
CS	Economic & Community [i-team		2021	101000	510800	501090	88.29
CS	Economic & Community [i-team		2021	101000	510800	501100	52,384.85
CS	Economic & Community [i-team		2021	101000	510800	501105	16,336.98
CS	Economic & Community [i-team		2021	101000	510800	501115	51.35
CS	Economic & Community [i-team		2021	101000	510800	501130	431.95
CS	Economic & Community [i-team		2021	101000	510800	501140	291.76
CS	Economic & Community [i-team		2021	101000	510800	511050	22,820.65
CS	Economic & Community [i-team		2021	101000	510800	530380	32,900.00
CS	Economic & Community [i-team		2021	101000	510800	540170	89.97
CS	Economic & Community [i-team		2021	101000	510800	540242	48.77
CS	Economic & Community [i-team		2021	101000	510800	540260	1,853.86
CS	Economic & Community [i-team		2021	101000	510800	570210	6,094.50
CS	Economic & Community [i-team		2021	101000	510800	590210	782.07
CS	Maintenance & Operation Facility Maintenance		2021	101000	710500	501010	2,121,914.60
CS	Maintenance & Operation Facility Maintenance		2021	101000	710500	501020	62,077.95
CS	Maintenance & Operation Facility Maintenance		2021	101000	710500	501040	230,368.37
CS	Maintenance & Operation Facility Maintenance		2021	101000	710500	501080	507,279.47
CS	Maintenance & Operation Facility Maintenance		2021	101000	710500	501090	1,061.87
CS	Maintenance & Operation Facility Maintenance		2021	101000	710500	501100	668,975.07
CS	Maintenance & Operation Facility Maintenance		2021	101000	710500	501105	184,438.29
CS	Maintenance & Operation Facility Maintenance		2021	101000	710500	501115	619.09
CS	Maintenance & Operation Facility Maintenance		2021	101000	710500	501118	7,037.26
CS	Maintenance & Operation Facility Maintenance		2021	101000	710500	501130	4,820.56
CS	Maintenance & Operation Facility Maintenance		2021	101000	710500	501140	1,457.78
CS	Maintenance & Operation Facility Maintenance		2021	101000	710500	501160	2,000.00
CS	Maintenance & Operation Facility Maintenance		2021	101000	710500	511000	90,609.97
CS	Maintenance & Operation Facility Maintenance		2021	101000	710500	511010	1,971.41
CS	Maintenance & Operation Facility Maintenance		2021	101000	710500	511330	30,943.78
CS	Maintenance & Operation Facility Maintenance		2021	101000	710500	511340	8,163.39
CS	Maintenance & Operation Facility Maintenance		2021	101000	710500	511410	550.00
CS	Maintenance & Operation Facility Maintenance		2021	101000	710500	530360	4,192.27
CS	Maintenance & Operation Facility Maintenance		2021	101000	710500	540170	12,824.49
CS	Maintenance & Operation Facility Maintenance		2021	101000	710500	540300	186,513.00
CS	Maintenance & Operation Facility Maintenance		2021	101000	710500	540640	46,592.32
CS	Maintenance & Operation Facility Maintenance		2021	101000	710500	580530	764,841.79
CS	Maintenance & Operation Facilities-Girdwood		2021	101000	710503	511000	7,821.25
CS	Maintenance & Operation Facilities-Girdwood		2021	101000	710503	530360	3,297.00
CS	Maintenance & Operation Facilities-Girdwood		2021	101000	710503	540170	327.93
CS	Maintenance & Operation Facilities-Girdwood		2021	101000	710503	540610	18.00
CS	Maintenance & Operation Facilities-Girdwood		2021	101000	710503	540640	7,342.75
CS	Maintenance & Operation Facilities-Eagle River Town Cen		2021	101000	710506	511000	6,381.06
CS	Maintenance & Operation Facilities-Eagle River Town Cen		2021	101000	710506	530360	4,745.43
CS	Maintenance & Operation Facilities-Eagle River Town Cen		2021	101000	710506	540610	1.50
CS	Maintenance & Operation Facilities-Eagle River Town Cen		2021	101000	710506	540640	3,193.00
CS	Maintenance & Operation Facilities-Eagle River Town Cen		2021	101000	710506	550080	79,507.90
CS	Maintenance & Operation Facilities-Fire Stations		2021	101000	710509	511000	80,124.83
CS	Maintenance & Operation Facilities-Fire Stations		2021	101000	710509	530360	49,615.46
CS	Maintenance & Operation Facilities-Fire Stations		2021	101000	710509	540170	482.24
CS	Maintenance & Operation Facilities-Fire Stations		2021	101000	710509	540610	426.50
CS	Maintenance & Operation Facilities-Fire Stations		2021	101000	710509	540640	306,107.46
CS	Maintenance & Operation Facilities-Fire Stations		2021	101000	710509	550080	910,332.30
CS	Maintenance & Operation Facilities-Libraries		2021	101000	710512	511000	28,873.75
CS	Maintenance & Operation Facilities-Libraries		2021	101000	710512	530360	7,743.08

CSP Cat.	Department	Cost Center Description	Fiscal Year	Fund	Cost Center	Acct	Actuals
CS	Maintenance & Operation Facilities-Libraries		2021	101000	710512	530380	400.00
CS	Maintenance & Operation Facilities-Libraries		2021	101000	710512	540170	6,474.44
CS	Maintenance & Operation Facilities-Libraries		2021	101000	710512	540610	423.90
CS	Maintenance & Operation Facilities-Libraries		2021	101000	710512	540640	1,204,577.33
CS	Maintenance & Operation Facilities-Libraries		2021	101000	710512	550080	516,039.94
CS	Maintenance & Operation Facilities-Fac Maint Whse		2021	101000	710515	511000	16,976.77
CS	Maintenance & Operation Facilities-Fac Maint Whse		2021	101000	710515	530360	2,195.40
CS	Maintenance & Operation Facilities-Fac Maint Whse		2021	101000	710515	530380	700.00
CS	Maintenance & Operation Facilities-Fac Maint Whse		2021	101000	710515	540170	2,827.34
CS	Maintenance & Operation Facilities-Fac Maint Whse		2021	101000	710515	540610	81.20
CS	Maintenance & Operation Facilities-Fac Maint Whse		2021	101000	710515	540640	75,001.85
CS	Maintenance & Operation Facilities-Fac Maint Whse		2021	101000	710515	550080	67,576.33
CS	Maintenance & Operation Facilities-Traffic		2021	101000	710518	511000	(12.03)
CS	Maintenance & Operation Facilities-Traffic		2021	101000	710518	550080	3,921.37
CS	Maintenance & Operation Facilities-RES/Historical Properl		2021	101000	710521	511000	12,338.98
CS	Maintenance & Operation Facilities-RES/Historical Properl		2021	101000	710521	530360	3,480.73
CS	Maintenance & Operation Facilities-RES/Historical Properl		2021	101000	710521	540170	259.71
CS	Maintenance & Operation Facilities-RES/Historical Properl		2021	101000	710521	540610	30.25
CS	Maintenance & Operation Facilities-RES/Historical Properl		2021	101000	710521	540640	9,520.30
CS	Maintenance & Operation Facilities-RES/Historical Properl		2021	101000	710521	550080	6,558.96
CS	Maintenance & Operation Facilities-Areawide Parks & Rec		2021	101000	710524	511000	63,822.06
CS	Maintenance & Operation Facilities-Areawide Parks & Rec		2021	101000	710524	530360	19,822.69
CS	Maintenance & Operation Facilities-Areawide Parks & Rec		2021	101000	710524	540170	5,710.95
CS	Maintenance & Operation Facilities-Areawide Parks & Rec		2021	101000	710524	540360	1,380.00
CS	Maintenance & Operation Facilities-Areawide Parks & Rec		2021	101000	710524	540610	219.80
CS	Maintenance & Operation Facilities-Areawide Parks & Rec		2021	101000	710524	540640	269,487.43
CS	Maintenance & Operation Facilities-Areawide Parks & Rec		2021	101000	710524	550080	31,961.91
CS	Maintenance & Operation Facilities-Health and Human Se		2021	101000	710527	511000	34,064.29
CS	Maintenance & Operation Facilities-Health and Human Se		2021	101000	710527	530360	15,294.40
CS	Maintenance & Operation Facilities-Health and Human Se		2021	101000	710527	540170	1,373.40
CS	Maintenance & Operation Facilities-Health and Human Se		2021	101000	710527	540610	166.75
CS	Maintenance & Operation Facilities-Health and Human Se		2021	101000	710527	540640	370,894.50
CS	Maintenance & Operation Facilities-Health and Human Se		2021	101000	710527	550080	286,679.33
CS	Maintenance & Operation Facilities-Health and Human Se		2021	101000	710527	580530	27,066.74
CS	Maintenance & Operation Facilities-ARDSA		2021	101000	710530	511000	298.94
CS	Maintenance & Operation Facilities-ARDSA		2021	101000	710530	530360	(2,800.00)
CS	Maintenance & Operation Facilities-ARDSA		2021	101000	710530	540640	3,597.88
CS	Maintenance & Operation Facilities-ARDSA		2021	101000	710530	550080	195.75
CS	Maintenance & Operation Facilities-ARDSA		2021	101000	710530	580530	24,308.95
CS	Maintenance & Operation Facilities-Transit/Centers/Park &		2021	101000	710533	511000	41,326.40
CS	Maintenance & Operation Facilities-Transit/Centers/Park &		2021	101000	710533	530360	9,594.63
CS	Maintenance & Operation Facilities-Transit/Centers/Park &		2021	101000	710533	540170	2,929.23
CS	Maintenance & Operation Facilities-Transit/Centers/Park &		2021	101000	710533	540360	1,905.00
CS	Maintenance & Operation Facilities-Transit/Centers/Park &		2021	101000	710533	540610	288.10
CS	Maintenance & Operation Facilities-Transit/Centers/Park &		2021	101000	710533	540640	281,690.05
CS	Maintenance & Operation Facilities-Transit/Centers/Park &		2021	101000	710533	550080	717,203.50
CS	Maintenance & Operation Facilities-Fleet Maint		2021	101000	710536	511000	12,672.64
CS	Maintenance & Operation Facilities-Fleet Maint		2021	101000	710536	530360	4,839.01
CS	Maintenance & Operation Facilities-Fleet Maint		2021	101000	710536	540170	303.60
CS	Maintenance & Operation Facilities-Fleet Maint		2021	101000	710536	540610	16.90
CS	Maintenance & Operation Facilities-Fleet Maint		2021	101000	710536	540640	28,781.70
CS	Maintenance & Operation Facilities-Fleet Maint		2021	101000	710536	550080	177,977.30
CS	Maintenance & Operation Facilities-Police / Substations		2021	101000	710539	511000	37,245.63
CS	Maintenance & Operation Facilities-Police / Substations		2021	101000	710539	530360	6,794.81
CS	Maintenance & Operation Facilities-Police / Substations		2021	101000	710539	540170	1,457.44
CS	Maintenance & Operation Facilities-Police / Substations		2021	101000	710539	540610	311.30
CS	Maintenance & Operation Facilities-Police / Substations		2021	101000	710539	540640	337,946.37
CS	Maintenance & Operation Facilities-Police / Substations		2021	101000	710539	550080	506,600.42
CS	Maintenance & Operation Facilities-Police / Substations		2021	101000	710539	580530	98,449.09

CSP Cat.	Department	Cost Center Description	Fiscal Year	Fund	Cost Center	Acct	Actuals
CS	Maintenance & Operation Facilities-Eagle River Parks & R		2021	101000	710542	511000	3,714.51
CS	Maintenance & Operation Facilities-Eagle River Parks & R		2021	101000	710542	540640	35.00
CS	Maintenance & Operation Facilities-City Hall		2021	101000	710545	511000	3,261.55
CS	Maintenance & Operation Facilities-City Hall		2021	101000	710545	530360	792.00
CS	Maintenance & Operation Facilities-City Hall		2021	101000	710545	540170	860.72
CS	Maintenance & Operation Facilities-City Hall		2021	101000	710545	540640	182,641.19
CS	Maintenance & Operation Facilities-Eagle River Parks & R		2021	101000	710548	511000	53.90
CS	Maintenance & Operation Facilities-Eagle River Parks & R		2021	101000	710548	540640	68.00
CS	Maintenance & Operation Facilities-Eagle River Parks & R		2021	101000	710551	511000	4,739.76
CS	Maintenance & Operation Facilities-Eagle River Parks & R		2021	101000	710551	530360	64.80
CS	Maintenance & Operation Facilities-Eagle River Parks & R		2021	101000	710551	540610	1.50
CS	Maintenance & Operation Facilities-Eagle River Parks & R		2021	101000	710551	540640	616.75
CS	Maintenance & Operation Facilities-Areawide Parks & Rec		2021	101000	710554	511000	63,956.31
CS	Maintenance & Operation Facilities-Areawide Parks & Rec		2021	101000	710554	530360	4,025.32
CS	Maintenance & Operation Facilities-Areawide Parks & Rec		2021	101000	710554	540610	18.40
CS	Maintenance & Operation Facilities-Areawide Parks & Rec		2021	101000	710554	540640	9,560.28
CS	Maintenance & Operation Facilities-Heritage Land Bank		2021	101000	710557	511000	36.50
CS	Maintenance & Operation Facilities-Heritage Land Bank		2021	101000	710557	540170	1,250.00
CS	Maintenance & Operation Facilities-Heritage Land Bank		2021	101000	710557	550080	14,161.24
CS	Maintenance & Operation Facilities-Chugiak Fire Service /		2021	101000	710560	511000	1,911.73
CS	Maintenance & Operation Facilities-Chugiak Fire Service /		2021	101000	710560	530360	1,100.12
CS	Maintenance & Operation Facilities-Chugiak Fire Service /		2021	101000	710560	550080	14,946.14
CS	Maintenance & Operation Facilities-CBERRRSA		2021	101000	710562	540640	24.00
CS	Maintenance & Operation Facilities-NC HJ Mac Mem Ctr		2021	101000	710563	511000	78.90
CS	Maintenance & Operation Facilities-NC HJ Mac Mem Ctr		2021	101000	710563	540610	1.50
CS	Maintenance & Operation Facilities-NC HJ Mac Mem Ctr		2021	101000	710563	540640	10,645.78
CS	Maintenance & Operation Facilities-NC Sullivan Arena		2021	101000	710566	501020	319.20
CS	Maintenance & Operation Facilities-NC Sullivan Arena		2021	101000	710566	501080	59.99
CS	Maintenance & Operation Facilities-NC Sullivan Arena		2021	101000	710566	501090	0.12
CS	Maintenance & Operation Facilities-NC Sullivan Arena		2021	101000	710566	501100	77.71
CS	Maintenance & Operation Facilities-NC Sullivan Arena		2021	101000	710566	501105	24.56
CS	Maintenance & Operation Facilities-NC Sullivan Arena		2021	101000	710566	501118	2.34
CS	Maintenance & Operation Facilities-NC Sullivan Arena		2021	101000	710566	501130	0.64
CS	Maintenance & Operation Facilities-NC Sullivan Arena		2021	101000	710566	511000	1,303.66
CS	Maintenance & Operation Facilities-NC Sullivan Arena		2021	101000	710566	530360	50.00
CS	Maintenance & Operation Facilities-NC Sullivan Arena		2021	101000	710566	530380	1,371.51
CS	Maintenance & Operation Facilities-NC Egan Center		2021	101000	710569	530360	250.00
CS	Maintenance & Operation Facilities-NC Egan Center		2021	101000	710569	550080	6,368.52
CS	Maintenance & Operation Facilities-NC Performing Arts Ce		2021	101000	710575	530360	594.00
CS	Maintenance & Operation Facilities-NC Performing Arts Ce		2021	101000	710575	540610	50.00
CS	Maintenance & Operation Facilities-NC Performing Arts Ce		2021	101000	710575	540640	34,879.44
CS	Maintenance & Operation Facilities-NC Anchorage Museu		2021	101000	710581	540170	1,457.44
CS	Maintenance & Operation Facilities-NC Anchorage Museu		2021	101000	710581	540640	2,081.44
CS	Maintenance & Operation Facility Capital Improvements		2021	101000	710800	501010	143,646.75
CS	Maintenance & Operation Facility Capital Improvements		2021	101000	710800	501040	23,465.80
CS	Maintenance & Operation Facility Capital Improvements		2021	101000	710800	501080	35,686.57
CS	Maintenance & Operation Facility Capital Improvements		2021	101000	710800	501090	62.89
CS	Maintenance & Operation Facility Capital Improvements		2021	101000	710800	501100	38,916.98
CS	Maintenance & Operation Facility Capital Improvements		2021	101000	710800	501105	12,310.73
CS	Maintenance & Operation Facility Capital Improvements		2021	101000	710800	501115	37.42
CS	Maintenance & Operation Facility Capital Improvements		2021	101000	710800	501130	331.72
CS	Maintenance & Operation Facility Capital Improvements		2021	101000	710800	501140	228.16
CS	Maintenance & Operation Facility Capital Improvements		2021	101000	710800	511330	3,110.47
CS	Maintenance & Operation Facility Capital Improvements		2021	101000	710800	540170	101.94
CS	Maintenance & Operation Facility Capital Improvements		2021	101000	710800	540300	11,418.00
CS	Maintenance & Operation Facility Capital Improvements		2021	101000	710800	540610	16.75
CS	Maintenance & Operation Facility Capital Improvements		2021	101000	710800	550010	121.37
CS	Maintenance & Operation Facility Capital Improvements		2021	101000	710800	580010	345,332.91
CS	Maintenance & Operation Facility Capital Improvements		2021	101000	710800	580020	226,411.13

CSP			Fiscal		Cost		
Cat.	Department	Cost Center Description	Year	Fund	Center	Acct	Actuals
CS	Maintenance & Operation	Facility Capital Improvements	2021	101000	710800	580030	2.13
CS	Maintenance & Operation	Facility Capital Improvements	2021	101000	710800	580140	272.87
CS	Maintenance & Operation	Facility Capital Improvements	2021	101000	710800	580150	10,000.00
CS	Maintenance & Operation	Facility Capital Improvements	2021	101000	710800	580530	300,000.00
CS	Information Technology	Admin Support	2021	607000	141100	501010	609,972.67
CS	Information Technology	Admin Support	2021	607000	141100	501020	6,399.84
CS	Information Technology	Admin Support	2021	607000	141100	501035	62,866.45
CS	Information Technology	Admin Support	2021	607000	141100	501080	142,718.06
CS	Information Technology	Admin Support	2021	607000	141100	501090	307.70
CS	Information Technology	Admin Support	2021	607000	141100	501100	161,697.50
CS	Information Technology	Admin Support	2021	607000	141100	501105	56,258.31
CS	Information Technology	Admin Support	2021	607000	141100	501115	182.16
CS	Information Technology	Admin Support	2021	607000	141100	501130	1,479.38
CS	Information Technology	Admin Support	2021	607000	141100	501140	859.78
CS	Information Technology	Admin Support	2021	607000	141100	511010	2,200.42
CS	Information Technology	Admin Support	2021	607000	141100	511080	129.34
CS	Information Technology	Admin Support	2021	607000	141100	511360	78.37
CS	Information Technology	Admin Support	2021	607000	141100	530060	41.00
CS	Information Technology	Admin Support	2021	607000	141100	530360	1,311.00
CS	Information Technology	Admin Support	2021	607000	141100	530380	33,918.04
CS	Information Technology	Admin Support	2021	607000	141100	540050	5,747.05
CS	Information Technology	Admin Support	2021	607000	141100	540170	118.94
CS	Information Technology	Admin Support	2021	607000	141100	540242	851.69
CS	Information Technology	Admin Support	2021	607000	141100	540271	5,940.77
CS	Information Technology	Admin Support	2021	607000	141100	540640	2,781.40
CS	Information Technology	Admin Support	2021	607000	141100	540710	606.90
CS	Information Technology	Admin Support	2021	607000	141100	572200	2,103.76
CS	Information Technology	Admin Support	2021	607000	141100	572210	575.81
CS	Information Technology	IGC - IT Security	2021	607000	143500	501010	313,348.51
CS	Information Technology	IGC - IT Security	2021	607000	143500	501020	317.17
CS	Information Technology	IGC - IT Security	2021	607000	143500	501035	31,817.69
CS	Information Technology	IGC - IT Security	2021	607000	143500	501080	73,424.94
CS	Information Technology	IGC - IT Security	2021	607000	143500	501090	122.40
CS	Information Technology	IGC - IT Security	2021	607000	143500	501100	55,584.00
CS	Information Technology	IGC - IT Security	2021	607000	143500	501105	25,915.66
CS	Information Technology	IGC - IT Security	2021	607000	143500	501115	71.28
CS	Information Technology	IGC - IT Security	2021	607000	143500	501130	676.70
CS	Information Technology	IGC - IT Security	2021	607000	143500	501140	443.17
CS	Information Technology	IGC - IT Security	2021	607000	143500	530380	22,150.00
CS	Information Technology	IGC - IT Security	2021	607000	143500	540050	16,500.00
CS	Information Technology	IGC - IT Security	2021	607000	143500	540190	2,017.96
CS	Information Technology	IGC - IT Security	2021	607000	143500	540200	6,777.06
CS	Information Technology	IGC - IT Security	2021	607000	143500	540242	569.79
CS	Information Technology	IGC - IT Security	2021	607000	143500	540260	1,500.00
CS	Information Technology	IGC - IT Security	2021	607000	143500	540271	230,288.46
CS	Information Technology	IGC - IT Security	2021	607000	143500	572210	11,053.75
CS	Information Technology	IGC - IT Security	2021	607000	143500	572220	88,076.31
CS	Information Technology	Fixed Assets	2021	607000	144000	572160	2,370.84
CS	Information Technology	Fixed Assets	2021	607000	144000	572200	562.50
CS	Information Technology	Fixed Assets	2021	607000	144000	572210	43,409.47
CS	Information Technology	Fixed Assets	2021	607000	144000	572999	54,313.68
CS	Information Technology	Fixed Assets	2021	607000	144000	580080	167,023.56
CS	Information Technology	Fixed Assets	2021	607000	144000	580150	10,750.00
CS	Information Technology	IGC – Microsoft EA SW & HW Lic	2021	607000	144003	540271	959,437.92
CS	Information Technology	IGC – Microsoft EA SW & HW Lic	2021	607000	144003	572210	7,247.93
CS	Information Technology	IGC – Microsoft EA SW & HW Lic	2021	607000	144003	572220	488,077.24
CS	Information Technology	Application Services	2021	607000	145100	501010	1,030,810.93
CS	Information Technology	Application Services	2021	607000	145100	501020	31,274.00
CS	Information Technology	Application Services	2021	607000	145100	501035	108,273.58

CSP Cat.	Department	Cost Center Description	Fiscal Year	Fund	Cost Center	Acct	Actuals
CS	Information Technology	Application Services	2021	607000	145100	501080	249,942.51
CS	Information Technology	Application Services	2021	607000	145100	501090	449.01
CS	Information Technology	Application Services	2021	607000	145100	501100	281,861.01
CS	Information Technology	Application Services	2021	607000	145100	501105	85,801.37
CS	Information Technology	Application Services	2021	607000	145100	501115	260.59
CS	Information Technology	Application Services	2021	607000	145100	501130	2,302.12
CS	Information Technology	Application Services	2021	607000	145100	501140	1,438.98
CS	Information Technology	Application Services	2021	607000	145100	501240	34.78
CS	Information Technology	Application Services	2021	607000	145100	530060	192.50
CS	Information Technology	Application Services	2021	607000	145100	530380	34,812.50
CS	Information Technology	Application Services	2021	607000	145100	540040	1,443.00
CS	Information Technology	Application Services	2021	607000	145100	540200	81,573.86
CS	Information Technology	Application Services	2021	607000	145100	540220	5.04
CS	Information Technology	Application Services	2021	607000	145100	540242	1,527.17
CS	Information Technology	Application Services	2021	607000	145100	540260	48.72
CS	Information Technology	Application Services	2021	607000	145100	540271	121,599.33
CS	Information Technology	Application Services	2021	607000	145100	572210	1,478.41
CS	Information Technology	Application Services	2021	607000	145100	572220	4,830.00
CS	Information Technology	IGC - SAP Support Centr	2021	607000	146200	501010	1,678,730.90
CS	Information Technology	IGC - SAP Support Centr	2021	607000	146200	501020	4,470.47
CS	Information Technology	IGC - SAP Support Centr	2021	607000	146200	501035	164,331.41
CS	Information Technology	IGC - SAP Support Centr	2021	607000	146200	501080	390,744.40
CS	Information Technology	IGC - SAP Support Centr	2021	607000	146200	501090	671.50
CS	Information Technology	IGC - SAP Support Centr	2021	607000	146200	501100	422,847.50
CS	Information Technology	IGC - SAP Support Centr	2021	607000	146200	501105	135,578.78
CS	Information Technology	IGC - SAP Support Centr	2021	607000	146200	501115	392.04
CS	Information Technology	IGC - SAP Support Centr	2021	607000	146200	501130	3,667.16
CS	Information Technology	IGC - SAP Support Centr	2021	607000	146200	501140	2,334.30
CS	Information Technology	IGC - SAP Support Centr	2021	607000	146200	511080	325.32
CS	Information Technology	IGC - SAP Support Centr	2021	607000	146200	530380	1,776,550.50
CS	Information Technology	IGC - SAP Support Centr	2021	607000	146200	540040	2,050.00
CS	Information Technology	IGC - SAP Support Centr	2021	607000	146200	540050	21,326.76
CS	Information Technology	IGC - SAP Support Centr	2021	607000	146200	540170	5,568.92
CS	Information Technology	IGC - SAP Support Centr	2021	607000	146200	540180	57.97
CS	Information Technology	IGC - SAP Support Centr	2021	607000	146200	540190	13,340.00
CS	Information Technology	IGC - SAP Support Centr	2021	607000	146200	540200	399,209.51
CS	Information Technology	IGC - SAP Support Centr	2021	607000	146200	540201	245,145.10
CS	Information Technology	IGC - SAP Support Centr	2021	607000	146200	540242	1,407.01
CS	Information Technology	IGC - SAP Support Centr	2021	607000	146200	540271	105,965.70
CS	Information Technology	IGC - SAP Support Centr	2021	607000	146200	540640	1,671.49
CS	Information Technology	IGC - SAP Support Centr	2021	607000	146200	572200	988.72
CS	Information Technology	IGC - SAP Support Centr	2021	607000	146200	572210	49,299.26
CS	Information Technology	IGC - SAP Support Centr	2021	607000	146200	572220	39,809.00
CS	Information Technology	IGC - SAP Support Centr	2021	607000	146200	580080	562,474.42
CS	Information Technology	IGC - SAP Support Centr	2021	607000	146200	590210	751.36
CS	Information Technology	Projects & Procurement	2021	607000	147300	501010	517,952.85
CS	Information Technology	Projects & Procurement	2021	607000	147300	501020	678.08
CS	Information Technology	Projects & Procurement	2021	607000	147300	501035	59,907.25
CS	Information Technology	Projects & Procurement	2021	607000	147300	501080	125,014.80
CS	Information Technology	Projects & Procurement	2021	607000	147300	501090	247.17
CS	Information Technology	Projects & Procurement	2021	607000	147300	501100	136,959.21
CS	Information Technology	Projects & Procurement	2021	607000	147300	501105	44,226.21
CS	Information Technology	Projects & Procurement	2021	607000	147300	501115	144.64
CS	Information Technology	Projects & Procurement	2021	607000	147300	501130	1,158.63
CS	Information Technology	Projects & Procurement	2021	607000	147300	501140	762.15
CS	Information Technology	Projects & Procurement	2021	607000	147300	511040	54.18
CS	Information Technology	Projects & Procurement	2021	607000	147300	540040	2,748.98
CS	Information Technology	Projects & Procurement	2021	607000	147300	540050	1,700.00
CS	Information Technology	Projects & Procurement	2021	607000	147300	540242	1,118.02

CSP Cat.	Department	Cost Center Description	Fiscal Year	Fund	Cost Center	Acct	Actuals
CS	Information Technology	Desktop Services	2021	607000	148100	501010	798,308.10
CS	Information Technology	Desktop Services	2021	607000	148100	501020	711.43
CS	Information Technology	Desktop Services	2021	607000	148100	501035	82,998.07
CS	Information Technology	Desktop Services	2021	607000	148100	501080	191,452.58
CS	Information Technology	Desktop Services	2021	607000	148100	501090	399.50
CS	Information Technology	Desktop Services	2021	607000	148100	501100	253,708.50
CS	Information Technology	Desktop Services	2021	607000	148100	501105	65,402.64
CS	Information Technology	Desktop Services	2021	607000	148100	501115	233.64
CS	Information Technology	Desktop Services	2021	607000	148100	501130	1,756.80
CS	Information Technology	Desktop Services	2021	607000	148100	501140	1,150.34
CS	Information Technology	Desktop Services	2021	607000	148100	511010	69.99
CS	Information Technology	Desktop Services	2021	607000	148100	511030	599.70
CS	Information Technology	Desktop Services	2021	607000	148100	511330	110.73
CS	Information Technology	Desktop Services	2021	607000	148100	511360	2,488.51
CS	Information Technology	Desktop Services	2021	607000	148100	530380	355,673.16
CS	Information Technology	Desktop Services	2021	607000	148100	540170	30,284.55
CS	Information Technology	Desktop Services	2021	607000	148100	540190	1,001.17
CS	Information Technology	Desktop Services	2021	607000	148100	540200	22,241.20
CS	Information Technology	Desktop Services	2021	607000	148100	540242	1,604.33
CS	Information Technology	Desktop Services	2021	607000	148100	540260	705.23
CS	Information Technology	Desktop Services	2021	607000	148100	540271	51,080.69
CS	Information Technology	Desktop Services	2021	607000	148100	540300	3,996.00
CS	Information Technology	Desktop Services	2021	607000	148100	540640	2,070.00
CS	Information Technology	Desktop Services	2021	607000	148100	572210	29,893.26
CS	Information Technology	Desktop Services	2021	607000	148100	572220	71,563.29
CS	Information Technology	Desktop Services	2021	607000	148100	590210	14,982.34
CS	Information Technology	Network Services	2021	607000	148200	501010	1,172,690.07
CS	Information Technology	Network Services	2021	607000	148200	501020	28,400.08
CS	Information Technology	Network Services	2021	607000	148200	501035	120,029.09
CS	Information Technology	Network Services	2021	607000	148200	501080	286,115.81
CS	Information Technology	Network Services	2021	607000	148200	501090	520.20
CS	Information Technology	Network Services	2021	607000	148200	501100	286,730.00
CS	Information Technology	Network Services	2021	607000	148200	501105	101,116.92
CS	Information Technology	Network Services	2021	607000	148200	501115	304.92
CS	Information Technology	Network Services	2021	607000	148200	501130	2,672.16
CS	Information Technology	Network Services	2021	607000	148200	501140	1,689.91
CS	Information Technology	Network Services	2021	607000	148200	501240	29.10
CS	Information Technology	Network Services	2021	607000	148200	511000	209.98
CS	Information Technology	Network Services	2021	607000	148200	511010	108.73
CS	Information Technology	Network Services	2021	607000	148200	511330	818.22
CS	Information Technology	Network Services	2021	607000	148200	511360	3,153.80
CS	Information Technology	Network Services	2021	607000	148200	540040	600.00
CS	Information Technology	Network Services	2021	607000	148200	540170	365,492.97
CS	Information Technology	Network Services	2021	607000	148200	540180	1,229.40
CS	Information Technology	Network Services	2021	607000	148200	540190	380,565.10
CS	Information Technology	Network Services	2021	607000	148200	540200	426,580.93
CS	Information Technology	Network Services	2021	607000	148200	540201	96,438.76
CS	Information Technology	Network Services	2021	607000	148200	540242	1,812.40
CS	Information Technology	Network Services	2021	607000	148200	540260	99,131.71
CS	Information Technology	Network Services	2021	607000	148200	540271	503,880.15
CS	Information Technology	Network Services	2021	607000	148200	540300	13,068.00
CS	Information Technology	Network Services	2021	607000	148200	572200	1,583.29
CS	Information Technology	Network Services	2021	607000	148200	572210	917,148.53
CS	Information Technology	Network Services	2021	607000	148200	572220	327,502.70
CS	Information Technology	Network Services	2021	607000	148200	572999	5,842.44
CS	Information Technology	Network Services	2021	607000	148200	590200	3,854.77
CS	Information Technology	Technology Services	2021	607000	148300	530380	191,611.50
CS	Information Technology	Technology Services	2021	607000	148300	540170	18,240.00
CS	Information Technology	Technology Services	2021	607000	148300	540190	23,758.41

CSP Cat.	Department	Cost Center Description	Fiscal Year	Fund	Cost Center	Acct	Actuals
CS	Information Technology	Technology Services	2021	607000	148300	540200	309,092.59
CS	Information Technology	Technology Services	2021	607000	148300	540260	124,190.80
CS	Information Technology	Technology Services	2021	607000	148300	540271	6,272.56
CS	Information Technology	Technology Services	2021	607000	148300	572210	87,899.34
							<u>69,335,046.41</u>

CSP			Fiscal		Cost		
Cat.	Department	Cost Center Description	Year	Fund	Center	Acct	Actuals
CS	Assembly	Clerk-Agenda Control	2021	101000	102003	605530	13.68
CS	Assembly	Clerk-Agenda Control	2021	101000	102003	605540	461.26
CS	Assembly	Clerk-Liquor License	2021	101000	102007	601900	404.16
CS	Assembly	Clerk-Liquor License	2021	101000	102007	605530	4.41
CS	Assembly	Clerk-Liquor License	2021	101000	102007	605540	141.05
CS	Assembly	Ombudsman	2021	101000	103000	600900	31,229.08
CS	Assembly	Ombudsman	2021	101000	103000	601150	2,623.11
CS	Assembly	Ombudsman	2021	101000	103000	605530	17.84
CS	Assembly	Ombudsman	2021	101000	103000	605540	607.09
CS	Internal Audit	Internal Audit	2021	101000	106000	600900	72,526.16
CS	Internal Audit	Internal Audit	2021	101000	106000	601150	6,091.89
CS	Internal Audit	Internal Audit	2021	101000	106000	605530	515.62
CS	Internal Audit	Internal Audit	2021	101000	106000	605540	1,325.02
CS	Mayor	Mayor	2021	101000	111100	600900	117,118.21
CS	Mayor	Mayor	2021	101000	111100	601150	9,837.40
CS	Mayor	Mayor	2021	101000	111100	601900	1,939.56
CS	Mayor	Mayor	2021	101000	111100	605530	162.82
CS	Mayor	Mayor	2021	101000	111100	605540	2,639.21
CS	Equity & Justice	Office of Equal Opportunity	2021	101000	113200	600900	27,128.65
CS	Equity & Justice	Office of Equal Opportunity	2021	101000	113200	601150	2,278.70
CS	Equity & Justice	Office of Equal Opportunity	2021	101000	113200	605530	17.17
CS	Equity & Justice	Office of Equal Opportunity	2021	101000	113200	605540	3,947.77
CS	Equity & Justice	IGC-OEO-Equal Employment O	2021	101000	113271	600130	28,928.54
CS	Equity & Justice	IGC-OEO-Contract Compliance	2021	101000	113272	600130	43,392.82
CS	Equity & Justice	IGC-OEO-Contract DBE	2021	101000	113273	600130	216,964.14
CS	Municipal Attorney	Civil Law	2021	101000	115100	600190	71,741.20
CS	Municipal Attorney	Civil Law	2021	101000	115100	600900	253,786.65
CS	Municipal Attorney	Civil Law	2021	101000	115100	601150	21,316.94
CS	Municipal Attorney	Civil Law	2021	101000	115100	605530	151.87
CS	Municipal Attorney	Civil Law	2021	101000	115100	605540	12,178.91
CS	Municipal Attorney	Criminal	2021	101000	115200	600190	19,130.99
CS	Municipal Attorney	Criminal	2021	101000	115200	600430	2,640.72
CS	Municipal Attorney	Criminal	2021	101000	115200	600480	18,461.84
CS	Municipal Attorney	Criminal	2021	101000	115200	600900	371,929.97
CS	Municipal Attorney	Criminal	2021	101000	115200	601150	31,240.44
CS	Municipal Attorney	Criminal	2021	101000	115200	605530	201.97
CS	Municipal Attorney	Criminal	2021	101000	115200	605540	16,210.56
CS	Municipal Attorney	Administrative Hearing	2021	101000	115300	600190	4,782.73
CS	Municipal Attorney	Administrative Hearing	2021	101000	115300	600900	19,550.22
CS	Municipal Attorney	Administrative Hearing	2021	101000	115300	601150	1,642.14
CS	Municipal Attorney	Administrative Hearing	2021	101000	115300	605530	18.19
CS	Municipal Attorney	Administrative Hearing	2021	101000	115300	605540	1,465.37
CS	Municipal Attorney	Muni Attorney Administration	2021	101000	115400	600440	583.47
CS	Municipal Attorney	Muni Attorney Administration	2021	101000	115400	600450	17,813.32
CS	Municipal Attorney	Muni Attorney Administration	2021	101000	115400	600900	16,291.83
CS	Municipal Attorney	Muni Attorney Administration	2021	101000	115400	601150	1,368.44
CS	Municipal Attorney	Muni Attorney Administration	2021	101000	115400	605530	22.45
CS	Municipal Attorney	Muni Attorney Administration	2021	101000	115400	605540	1,805.66
CS	Municipal Manager	Muni Manager Admin	2021	101000	121000	600900	57,771.98
CS	Municipal Manager	Muni Manager Admin	2021	101000	121000	601150	4,852.58
CS	Municipal Manager	Muni Manager Admin	2021	101000	121000	601900	404.16
CS	Municipal Manager	Muni Manager Admin	2021	101000	121000	605530	33.76
CS	Municipal Manager	Muni Manager Admin	2021	101000	121000	605540	7,787.26
CS	Municipal Manager	Office of Emergency Manageme	2021	101000	124200	601050	101,420.98
CS	Municipal Manager	Office of Emergency Manageme	2021	101000	124200	601900	11,642.40
CS	Municipal Manager	Office of Emergency Manageme	2021	101000	124200	605023	3,322.00
CS	Municipal Manager	Office of Emergency Manageme	2021	101000	124200	605530	30.53
CS	Municipal Manager	Office of Emergency Manageme	2021	101000	124200	605540	7,004.17
CS	Municipal Manager	Risk Management	2021	101000	124700	600030	416.61

CSP Cat.	Department	Cost Center Description	Fiscal Year	Fund	Cost Center	Acct	Actuals
CS	Municipal Manager	Risk Management	2021	101000	124700	600050	2,814.23
CS	Municipal Manager	Risk Management	2021	101000	124700	600060	561.45
CS	Municipal Manager	Risk Management	2021	101000	124700	600080	1,211.47
CS	Municipal Manager	Risk Management	2021	101000	124700	600090	950.83
CS	Municipal Manager	Risk Management	2021	101000	124700	600140	21.72
CS	Municipal Manager	Risk Management	2021	101000	124700	600150	890.28
CS	Municipal Manager	Risk Management	2021	101000	124700	600160	613,399.79
CS	Municipal Manager	Risk Management	2021	101000	124700	600220	438.79
CS	Municipal Manager	Risk Management	2021	101000	124700	600240	3,287.96
CS	Municipal Manager	Risk Management	2021	101000	124700	600250	33.21
CS	Municipal Manager	Risk Management	2021	101000	124700	600280	852.24
CS	Municipal Manager	Risk Management	2021	101000	124700	600290	1,889.10
CS	Municipal Manager	Risk Management	2021	101000	124700	600320	778.16
CS	Municipal Manager	Risk Management	2021	101000	124700	600330	303.31
CS	Municipal Manager	Risk Management	2021	101000	124700	600360	1,425.69
CS	Municipal Manager	Risk Management	2021	101000	124700	600370	39.07
CS	Municipal Manager	Risk Management	2021	101000	124700	600540	2,270.36
CS	Municipal Manager	Risk Management	2021	101000	124700	600570	474.56
CS	Municipal Manager	Risk Management	2021	101000	124700	600580	1,759.22
CS	Municipal Manager	Risk Management	2021	101000	124700	600610	1,147.31
CS	Municipal Manager	Risk Management	2021	101000	124700	600900	89,769.89
CS	Municipal Manager	Risk Management	2021	101000	124700	601150	7,540.26
CS	Municipal Manager	Risk Management	2021	101000	124700	601840	272.35
CS	Municipal Manager	Risk Management	2021	101000	124700	601850	499.70
CS	Municipal Manager	Risk Management	2021	101000	124700	601880	5,415.99
CS	Municipal Manager	Risk Management	2021	101000	124700	601890	9,074.58
CS	Municipal Manager	Risk Management	2021	101000	124700	601910	452.54
CS	Municipal Manager	Risk Management	2021	101000	124700	601930	(0.20)
CS	Municipal Manager	Risk Management	2021	101000	124700	605530	17.82
CS	Municipal Manager	Risk Management	2021	101000	124700	605540	4,066.92
CS	Municipal Manager	Safety	2021	101000	124900	600030	177.68
CS	Municipal Manager	Safety	2021	101000	124900	600060	239.45
CS	Municipal Manager	Safety	2021	101000	124900	600080	516.74
CS	Municipal Manager	Safety	2021	101000	124900	600090	405.54
CS	Municipal Manager	Safety	2021	101000	124900	600140	10.87
CS	Municipal Manager	Safety	2021	101000	124900	600150	445.12
CS	Municipal Manager	Safety	2021	101000	124900	600220	187.15
CS	Municipal Manager	Safety	2021	101000	124900	600240	413.05
CS	Municipal Manager	Safety	2021	101000	124900	600280	426.13
CS	Municipal Manager	Safety	2021	101000	124900	600290	944.55
CS	Municipal Manager	Safety	2021	101000	124900	600320	428.16
CS	Municipal Manager	Safety	2021	101000	124900	600330	129.36
CS	Municipal Manager	Safety	2021	101000	124900	600360	617.81
CS	Municipal Manager	Safety	2021	101000	124900	600370	39.07
CS	Municipal Manager	Safety	2021	101000	124900	600540	1,135.19
CS	Municipal Manager	Safety	2021	101000	124900	600570	237.28
CS	Municipal Manager	Safety	2021	101000	124900	600580	879.59
CS	Municipal Manager	Safety	2021	101000	124900	600610	489.36
CS	Municipal Manager	Safety	2021	101000	124900	601840	136.18
CS	Municipal Manager	Safety	2021	101000	124900	601850	249.83
CS	Municipal Manager	Safety	2021	101000	124900	601880	2,903.19
CS	Municipal Manager	Safety	2021	101000	124900	601890	4,864.35
CS	Municipal Manager	Safety	2021	101000	124900	601910	226.27
CS	Municipal Manager	Safety	2021	101000	124900	601930	(0.10)
CS	Municipal Manager	Safety	2021	101000	124900	605530	8.32
CS	Municipal Manager	Safety	2021	101000	124900	605540	1,931.45
CS	Finance	Controller Administration	2021	101000	132100	600900	18,598.33
CS	Finance	Controller Administration	2021	101000	132100	601150	1,562.18
CS	Finance	Controller Administration	2021	101000	132100	605530	13.13

CSP			Fiscal		Cost		
Cat.	Department	Cost Center Description	Year	Fund	Center	Acct	Actuals
CS	Finance	Controller Administration	2021	101000	132100	605540	718.34
CS	Finance	Central Accounting	2021	101000	132200	600340	175,290.03
CS	Finance	Central Accounting	2021	101000	132200	600900	185,287.70
CS	Finance	Central Accounting	2021	101000	132200	601150	15,563.32
CS	Finance	Central Accounting	2021	101000	132200	605530	145.30
CS	Finance	Central Accounting	2021	101000	132200	605540	7,570.93
CS	Information Technology	Payroll	2021	101000	132300	600480	14,409.22
CS	Information Technology	Payroll	2021	101000	132300	600900	62,970.72
CS	Information Technology	Payroll	2021	101000	132300	601150	5,289.24
CS	Information Technology	Payroll	2021	101000	132300	605530	3,899.82
CS	Information Technology	Payroll	2021	101000	132300	605540	2,415.20
CS	Finance	Accounts Payable	2021	101000	132400	600340	58,429.99
CS	Finance	Accounts Payable	2021	101000	132400	600480	49,906.98
CS	Finance	Accounts Payable	2021	101000	132400	600900	27,311.71
CS	Finance	Accounts Payable	2021	101000	132400	601150	2,294.06
CS	Finance	Accounts Payable	2021	101000	132400	605530	14.58
CS	Finance	Accounts Payable	2021	101000	132400	605540	794.26
CS	Finance	Treasury Administration	2021	101000	134100	600900	40,967.58
CS	Finance	Treasury Administration	2021	101000	134100	601150	3,441.08
CS	Finance	Treasury Administration	2021	101000	134100	605530	20.13
CS	Finance	Treasury Administration	2021	101000	134100	605540	1,096.99
CS	Finance	Revenue Management	2021	101000	134200	600390	162,938.71
CS	Finance	Revenue Management	2021	101000	134200	600900	151,752.11
CS	Finance	Revenue Management	2021	101000	134200	601150	12,746.48
CS	Finance	Revenue Management	2021	101000	134200	605530	116.53
CS	Finance	Revenue Management	2021	101000	134200	605540	6,318.64
CS	Finance	IGC-Rev Mgmt-E911	2021	101000	134271	600400	12,643.16
CS	Finance	IGC-Rev Mgmt-PSAR Billing	2021	101000	134272	600400	151,718.09
CS	Finance	IGC-Rev Mgmt-Cash Receipts	2021	101000	134273	600400	196,872.31
CS	Finance	IGC-Rev Mgmt-In-House Collec	2021	101000	134274	600400	30,704.85
CS	Finance	IGC-Rev Mgmt-DCF	2021	101000	134275	600400	475,022.16
CS	Finance	IGC-Exter Collect Agncy Recov	2021	101000	134276	600400	30,704.85
CS	Finance	Tax Billing	2021	101000	134600	600390	54,942.78
CS	Finance	Tax Billing	2021	101000	134600	600900	47,960.24
CS	Finance	Tax Billing	2021	101000	134600	601150	4,028.44
CS	Finance	Tax Billing	2021	101000	134600	605530	30.50
CS	Finance	Tax Billing	2021	101000	134600	605540	1,650.86
CS	Finance	IGC-Tax Billing Utilities	2021	101000	134671	600470	97,187.28
CS	Finance	Remittance Processing	2021	101000	134700	600390	18,314.25
CS	Finance	Remittance Processing	2021	101000	134700	600900	47,923.64
CS	Finance	Remittance Processing	2021	101000	134700	601150	4,025.38
CS	Finance	Remittance Processing	2021	101000	134700	605530	11.47
CS	Finance	Remittance Processing	2021	101000	134700	605540	623.24
CS	Finance	IGC-Remittance Processing	2021	101000	134771	600510	232,902.94
CS	Chief Fiscal Officer	Chief Fiscal Officer	2021	101000	137000	605530	24.41
CS	Chief Fiscal Officer	Chief Fiscal Officer	2021	101000	137000	605540	679.93
CS	Purchasing	Purchasing Services	2021	101000	138100	600900	167,860.89
CS	Purchasing	Purchasing Services	2021	101000	138100	601150	14,099.56
CS	Purchasing	Purchasing Services	2021	101000	138100	605530	122.70
CS	Purchasing	Purchasing Services	2021	101000	138100	605540	3,428.30
CS	Management & Budget	Management & Budget	2021	101000	139100	600900	96,835.77
CS	Management & Budget	Management & Budget	2021	101000	139100	601150	8,133.76
CS	Management & Budget	Management & Budget	2021	101000	139100	605530	53.66
CS	Management & Budget	Management & Budget	2021	101000	139100	605540	1,501.60
CS	Information Technology	Reprographics	2021	101000	142300	600260	113,952.85
CS	Information Technology	Reprographics	2021	101000	142300	600900	124,037.66
CS	Information Technology	Reprographics	2021	101000	142300	601150	10,418.61
CS	Information Technology	Reprographics	2021	101000	142300	605530	31.83
CS	Information Technology	Reprographics	2021	101000	142300	605540	892.00

CSP			Fiscal		Cost		
Cat.	Department	Cost Center Description	Year	Fund	Center	Acct	Actuals
CS	Information Technology	IGC-Repro	2021	101000	142371	600230	795,750.64
CS	Information Technology	Records Management	2021	101000	142400	600260	22,790.57
CS	Information Technology	Records Management	2021	101000	142400	605530	9.03
CS	Information Technology	Records Management	2021	101000	142400	605540	252.02
CS	Human Resources	Employee Relations Admin	2021	101000	181000	600900	52,866.12
CS	Human Resources	Employee Relations Admin	2021	101000	181000	601150	4,440.51
CS	Human Resources	Employee Relations Admin	2021	101000	181000	605530	65,457.83
CS	Human Resources	Employee Relations Admin	2021	101000	181000	605540	1,196.98
CS	Human Resources	Labor Relations	2021	101000	184100	600620	150,487.68
CS	Human Resources	Labor Relations	2021	101000	184100	605530	213,706.36
CS	Human Resources	Labor Relations	2021	101000	184100	605540	3,913.16
CS	Human Resources	Employment	2021	101000	184500	600620	217,371.12
CS	Human Resources	Employment	2021	101000	184500	600900	110,308.58
CS	Human Resources	Employment	2021	101000	184500	601150	9,265.44
CS	Human Resources	Employment	2021	101000	184500	605530	322,123.82
CS	Human Resources	Employment	2021	101000	184500	605540	5,892.80
CS	Human Resources	Benefits	2021	101000	187100	600620	100,325.12
CS	Human Resources	Benefits	2021	101000	187100	600900	82,630.76
CS	Human Resources	Benefits	2021	101000	187100	601150	6,940.59
CS	Human Resources	Benefits	2021	101000	187100	605530	86,050.02
CS	Human Resources	Benefits	2021	101000	187100	605540	1,574.28
CS	Economic & Community [OECD Admin		2021	101000	510500	600020	8,848.40
CS	Economic & Community [OECD Admin		2021	101000	510500	600050	1,918.78
CS	Economic & Community [OECD Admin		2021	101000	510500	600160	65,065.83
CS	Economic & Community [OECD Admin		2021	101000	510500	600200	8,501.95
CS	Economic & Community [OECD Admin		2021	101000	510500	600240	4,513.82
CS	Economic & Community [OECD Admin		2021	101000	510500	600320	1,313.34
CS	Economic & Community [OECD Admin		2021	101000	510500	600360	4,443.41
CS	Economic & Community [OECD Admin		2021	101000	510500	600370	101.57
CS	Economic & Community [OECD Admin		2021	101000	510500	600900	42,175.74
CS	Economic & Community [OECD Admin		2021	101000	510500	601150	3,542.58
CS	Economic & Community [OECD Admin		2021	101000	510500	601580	7,194.09
CS	Economic & Community [OECD Admin		2021	101000	510500	601590	5,926.63
CS	Economic & Community [OECD Admin		2021	101000	510500	601880	1,489.20
CS	Economic & Community [OECD Admin		2021	101000	510500	601890	2,495.18
CS	Economic & Community [OECD Admin		2021	101000	510500	601900	808.32
CS	Economic & Community [OECD Admin		2021	101000	510500	605530	23,318.05
CS	Economic & Community [OECD Admin		2021	101000	510500	605540	4,580.96
CS	Economic & Community [OECD Data & Analytics		2021	101000	510600	605530	31,086.11
CS	Economic & Community [OECD Data & Analytics		2021	101000	510600	605540	6,111.29
CS	Economic & Community [IGC-OECD GIS Licensing		2021	101000	510671	600110	325,000.08
CS	Economic & Community [IGC-OECD GIS Enterprise Prog		2021	101000	510672	600110	576,868.26
CS	Economic & Community [IGC-OECD GIS Dept Support		2021	101000	510673	600110	144,000.00
CS	Economic & Community [i-team		2021	101000	510800	601900	404.16
CS	Economic & Community [i-team		2021	101000	510800	605530	17,942.26
CS	Economic & Community [i-team		2021	101000	510800	605540	3,545.17
CS	Maintenance & Operation Facility Maintenance		2021	101000	710500	601330	925,735.66
CS	Maintenance & Operation Facility Maintenance		2021	101000	710500	605023	10,688.00
CS	Maintenance & Operation Facility Maintenance		2021	101000	710500	605530	14,321.75
CS	Maintenance & Operation Facility Maintenance		2021	101000	710500	605540	84,997.41
CS	Maintenance & Operation Facilities-Girdwood		2021	101000	710503	601000	21,834.87
CS	Maintenance & Operation Facilities-Eagle River Town Cen		2021	101000	710506	601000	90,941.20
CS	Maintenance & Operation Facilities-Fire Stations		2021	101000	710509	601000	1,185,614.26
CS	Maintenance & Operation Facilities-Libraries		2021	101000	710512	601000	1,275,082.91
CS	Maintenance & Operation Facilities-Fac Maint Whse		2021	101000	710515	601000	176,936.97
CS	Maintenance & Operation Facilities-Traffic		2021	101000	710518	601000	44,427.93
CS	Maintenance & Operation Facilities-RES/Historical Properl		2021	101000	710521	601000	24,385.22
CS	Maintenance & Operation Facilities-Areawide Parks & Rec		2021	101000	710524	601000	347,389.05
CS	Maintenance & Operation Facilities-Health and Human Se		2021	101000	710527	601000	586,360.26

CSP			Fiscal		Cost		
Cat.	Department	Cost Center Description	Year	Fund	Center	Acct	Actuals
CS	Maintenance & Operation Facilities-ARDSA		2021	101000	710530	601000	3,646.30
CS	Maintenance & Operation Facilities-Transit/Centers/Park &		2021	101000	710533	601000	935,467.17
CS	Maintenance & Operation Facilities-Fleet Maint		2021	101000	710536	601000	179,509.61
CS	Maintenance & Operation Facilities-Police / Substations		2021	101000	710539	601000	722,309.15
CS	Maintenance & Operation Facilities-Eagle River Parks & R		2021	101000	710542	601000	702.00
CS	Maintenance & Operation Facilities-City Hall		2021	101000	710545	601000	133,231.70
CS	Maintenance & Operation Facilities-Eagle River Parks & R		2021	101000	710548	601000	540.96
CS	Maintenance & Operation Facilities-Eagle River Parks & R		2021	101000	710551	601000	11,309.74
CS	Maintenance & Operation Facilities-Areawide Parks & Rec		2021	101000	710554	601000	45,544.52
CS	Maintenance & Operation Facilities-Heritage Land Bank		2021	101000	710557	601000	14,908.15
CS	Maintenance & Operation Facilities-Chugiak Fire Service /		2021	101000	710560	601000	18,953.34
CS	Maintenance & Operation Facilities-CBERRRSA		2021	101000	710562	601000	0.81
CS	Maintenance & Operation Facilities-NC Sullivan Arena		2021	101000	710566	605530	1.88
CS	Maintenance & Operation Facilities-NC Sullivan Arena		2021	101000	710566	605540	11.30
CS	Maintenance & Operation Facilities-Permit Center		2021	101000	710583	601000	0.84
CS	Maintenance & Operation Facility Capital Improvements		2021	101000	710800	605530	995.08
CS	Maintenance & Operation Facility Capital Improvements		2021	101000	710800	605540	5,633.40
CS	Information Technology Admin Support		2021	607000	141100	600900	345,936.26
CS	Information Technology Admin Support		2021	607000	141100	600970	79,576.59
CS	Information Technology Admin Support		2021	607000	141100	601130	108,640.93
CS	Information Technology Admin Support		2021	607000	141100	601150	29,057.09
CS	Information Technology Admin Support		2021	607000	141100	601680	0.01
CS	Information Technology Admin Support		2021	607000	141100	605530	74.08
CS	Information Technology Admin Support		2021	607000	141100	605540	2,071.58
CS	Information Technology IGC - IT Security		2021	607000	143500	600260	68,371.72
CS	Information Technology IGC - IT Security		2021	607000	143500	605530	33.66
CS	Information Technology IGC - IT Security		2021	607000	143500	605540	944.70
CS	Information Technology IGC - IT Security - All		2021	607000	143571	601870	360,925.65
CS	Information Technology IGC - IT Security - No AWWU		2021	607000	143572	601870	588,878.66
CS	Information Technology Application Services		2021	607000	145100	600260	319,067.97
CS	Information Technology Application Services		2021	607000	145100	601900	3,634.92
CS	Information Technology Application Services		2021	607000	145100	605530	121.74
CS	Information Technology Application Services		2021	607000	145100	605540	3,404.74
CS	Information Technology IGC - SAP Support Centr		2021	607000	146200	600260	433,020.81
CS	Information Technology IGC - SAP Support Centr		2021	607000	146200	600900	186,312.78
CS	Information Technology IGC - SAP Support Centr		2021	607000	146200	601150	15,649.42
CS	Information Technology IGC - SAP Support Centr		2021	607000	146200	605530	186.71
CS	Information Technology IGC - SAP Support Centr		2021	607000	146200	605540	5,215.63
CS	Information Technology Projects & Procurement		2021	607000	147300	600260	159,534.00
CS	Information Technology Projects & Procurement		2021	607000	147300	601900	1,211.64
CS	Information Technology Projects & Procurement		2021	607000	147300	605530	66.69
CS	Information Technology Projects & Procurement		2021	607000	147300	605540	1,862.64
CS	Information Technology Desktop Services		2021	607000	148100	600260	227,905.69
CS	Information Technology Desktop Services		2021	607000	148100	605530	84.90
CS	Information Technology Desktop Services		2021	607000	148100	605540	2,371.77
CS	Information Technology Network Services		2021	607000	148200	600260	319,068.02
CS	Information Technology Network Services		2021	607000	148200	605530	133.52
CS	Information Technology Network Services		2021	607000	148200	605540	3,735.00
CS	Information Technology IGC - Netwk Svcs - Servers		2021	607000	148271	600100	2,837,942.25
CS	Information Technology IGC - Netwk Svcs - Network		2021	607000	148272	600100	1,870,461.94
CS	Information Technology IGC - Netwk Svcs - Phones		2021	607000	148273	600100	757,586.28
							<u>24,519,381.16</u>

CSP			Fiscal		Cost		
Cat.	Department	Cost Center Description	Year	Fund	Center	Acct	Actuals
CS	Mayor	Mayor	2021	101000	111100	540150	195.00
CS	Municipal Attorney	Civil Law	2021	101000	115100	540030	180.00
CS	Municipal Attorney	Civil Law	2021	101000	115100	600190	71,741.20
CS	Municipal Attorney	Criminal	2021	101000	115200	530090	1,085.00
CS	Municipal Attorney	Criminal	2021	101000	115200	540030	23,423.74
CS	Municipal Attorney	Criminal	2021	101000	115200	600190	19,130.99
CS	Municipal Attorney	Administrative Hearing	2021	101000	115300	600190	4,782.73
CS	Municipal Manager	Muni Manager Admin	2021	101000	121000	530090	2,100.00
CS	Real Estate	Leases-City Hall	2021	101000	122302	580530	187,950.00
CS	Real Estate	Leases-ERTC	2021	101000	122303	580530	120,000.00
CS	Municipal Manager	Office of Emergency Management	2021	101000	124200	580010	427,120.29
CS	Municipal Manager	Office of Emergency Management	2021	101000	124200	580020	102,890.41
CS	Municipal Manager	Office of Emergency Management	2021	101000	124200	580030	3.43
CS	Municipal Manager	Office of Emergency Management	2021	101000	124200	580140	346.72
CS	Municipal Manager	Office of Emergency Management	2021	101000	124200	580530	11,574.00
CS	Municipal Manager	Risk Management	2021	101000	124700	600080	1,211.47
CS	Municipal Manager	Risk Management	2021	101000	124700	600160	613,399.79
CS	Municipal Manager	Safety	2021	101000	124900	600080	516.74
CS	Finance	Revenue Management	2021	101000	134200	540030	1,240.00
CS	Finance	Revenue Management	2021	101000	134200	570200	4,804.60
CS	Finance	Tax Billing	2021	101000	134600	570220	1,208.88
CS	Chief Fiscal Officer	Chief Fiscal Officer	2021	101000	137000	570210	7,245.95
CS	Purchasing	Purchasing Services	2021	101000	138100	570210	1,968.13
CS	Information Technology	Reprographics	2021	101000	142300	570200	15,295.00
CS	Human Resources	Employee Relations Admin	2021	101000	181000	570210	6,230.08
CS	Economic & Community L	OECD Admin	2021	101000	510500	600160	65,065.83
CS	Economic & Community L	i-team	2021	101000	510800	570210	6,094.50
CS	Maintenance & Operation	Facility Maintenance	2021	101000	710500	580530	764,841.79
CS	Maintenance & Operation	Facilities-Health and Human Se	2021	101000	710527	580530	27,066.74
CS	Maintenance & Operation	Facilities-ARDSA	2021	101000	710530	580530	24,308.95
CS	Maintenance & Operation	Facilities-Police / Substations	2021	101000	710539	580530	98,449.09
CS	Maintenance & Operation	Facility Capital Improvements	2021	101000	710800	580010	345,332.91
CS	Maintenance & Operation	Facility Capital Improvements	2021	101000	710800	580020	226,411.13
CS	Maintenance & Operation	Facility Capital Improvements	2021	101000	710800	580030	2.13
CS	Maintenance & Operation	Facility Capital Improvements	2021	101000	710800	580140	272.87
CS	Maintenance & Operation	Facility Capital Improvements	2021	101000	710800	580150	10,000.00
CS	Maintenance & Operation	Facility Capital Improvements	2021	101000	710800	580530	300,000.00
CS	Information Technology	Fixed Assets	2021	607000	144000	580080	167,023.56
CS	Information Technology	Fixed Assets	2021	607000	144000	580150	10,750.00
CS	Information Technology	IGC - SAP Support Centr	2021	607000	146200	580080	562,474.42
							<u>4,233,738.07</u>

CSP			Fiscal		Cost		
Cat.	Department	Cost Center Description	Year	Fund	Center	Acct	Actuals
CS	Assembly	Clerk-Agenda Control	2021	101000	102003	600020	(237,831.97)
CS	Assembly	Clerk-Municipal Audit	2021	101000	102006	600030	(466,584.00)
CS	Assembly	Clerk-Liquor License	2021	101000	102007	600040	(77,283.36)
CS	Assembly	Ombudsman	2021	101000	103000	408380	(393.25)
CS	Assembly	Ombudsman	2021	101000	103000	600050	(303,230.37)
CS	Internal Audit	Internal Audit	2021	101000	106000	408380	(548.07)
CS	Internal Audit	Internal Audit	2021	101000	106000	430030	(109,958.06)
CS	Internal Audit	Internal Audit	2021	101000	106000	600060	(716,377.00)
CS	Equity & Justice	Equity & Justice	2021	101000	107000	408380	(238.15)
CS	Equity & Justice	Equity & Justice	2021	101000	107000	601930	238.15
CS	Mayor	Mayor	2021	101000	111100	408380	(1,481.50)
CS	Mayor	Mayor	2021	101000	111100	600080	(1,546,054.37)
CS	Equity & Justice	Office of Equal Opportunity	2021	101000	113200	408380	(343.25)
CS	Equity & Justice	Office of Equal Opportunity	2021	101000	113200	600130	(289,285.50)
CS	Equity & Justice	IGC-OEO-Equal Employment O	2021	101000	113271	600140	(28,928.54)
CS	Equity & Justice	IGC-OEO-Contract Compliance	2021	101000	113272	600120	(43,392.82)
CS	Equity & Justice	IGC-OEO-Contract DBE	2021	101000	113273	601820	(216,964.14)
CS	Municipal Attorney	Civil Law	2021	101000	115100	406625	(1,193.00)
CS	Municipal Attorney	Civil Law	2021	101000	115100	408380	(1,657.20)
CS	Municipal Attorney	Civil Law	2021	101000	115100	408580	(2,845.00)
CS	Municipal Attorney	Civil Law	2021	101000	115100	600160	(2,673,631.81)
CS	Municipal Attorney	Criminal	2021	101000	115200	406490	(483,097.66)
CS	Municipal Attorney	Criminal	2021	101000	115200	406625	(2,894.75)
CS	Municipal Attorney	Criminal	2021	101000	115200	407060	(47,625.00)
CS	Municipal Attorney	Criminal	2021	101000	115200	408380	6,041.13
CS	Municipal Attorney	Criminal	2021	101000	115200	600170	(3,238,280.87)
CS	Municipal Attorney	Administrative Hearing	2021	101000	115300	407050	(432.69)
CS	Municipal Attorney	Administrative Hearing	2021	101000	115300	408380	(248.07)
CS	Municipal Attorney	Administrative Hearing	2021	101000	115300	600180	(317,018.29)
CS	Municipal Attorney	Muni Attorney Administration	2021	101000	115400	406625	(4,020.90)
CS	Municipal Attorney	Muni Attorney Administration	2021	101000	115400	408380	(474.90)
CS	Municipal Attorney	Muni Attorney Administration	2021	101000	115400	600190	(349,140.57)
CS	Municipal Manager	Muni Manager Admin	2021	101000	121000	408380	(855.96)
CS	Municipal Manager	Muni Manager Admin	2021	101000	121000	600220	(559,375.42)
CS	Real Estate	Leases-Parking Garage	2021	101000	122301	600890	(91,980.00)
CS	Real Estate	Leases-City Hall	2021	101000	122302	600900	(3,819,101.00)
CS	Real Estate	Leases-ERTC	2021	101000	122303	600910	(344,079.90)
CS	Real Estate	Leases-Libraries	2021	101000	122304	600920	(223,031.28)
CS	Real Estate	Leases-Traffic	2021	101000	122306	600940	(48,000.00)
CS	Real Estate	Leases-Recreation	2021	101000	122307	600950	(368,745.00)
CS	Real Estate	Leases-Permit Center	2021	101000	122309	600970	(2,058,563.64)
CS	Real Estate	Leases-Police	2021	101000	122310	600980	(37,431.58)
CS	Municipal Manager	Office of Emergency Management	2021	101000	124200	408380	(988.47)
CS	Municipal Manager	Office of Emergency Management	2021	101000	124200	600090	(1,079,845.22)
CS	Municipal Manager	Risk Management	2021	101000	124700	406625	(47,800.63)
CS	Municipal Manager	Risk Management	2021	101000	124700	408380	(406.62)
CS	Municipal Manager	Risk Management	2021	101000	124700	600600	(992,286.26)
CS	Municipal Manager	Safety	2021	101000	124900	408380	(189.31)
CS	Municipal Manager	Safety	2021	101000	124900	600500	(162,866.57)
CS	Finance	Controller Administration	2021	101000	132100	408380	(283.24)
CS	Finance	Controller Administration	2021	101000	132100	408550	223.80
CS	Finance	Controller Administration	2021	101000	132100	600340	(233,720.02)
CS	Finance	Central Accounting	2021	101000	132200	406625	(8,181.98)
CS	Finance	Central Accounting	2021	101000	132200	408380	(1,707.30)
CS	Finance	Central Accounting	2021	101000	132200	600350	(2,541,625.76)
CS	Information Technology	Payroll	2021	101000	132300	406621	(3,100.00)
CS	Information Technology	Payroll	2021	101000	132300	408380	(1,829.86)
CS	Information Technology	Payroll	2021	101000	132300	600360	(1,425,649.31)
CS	Finance	Accounts Payable	2021	101000	132400	408380	(107.12)

CSP			Fiscal		Cost		
Cat.	Department	Cost Center Description	Year	Fund	Center	Acct	Actuals
CS	Finance	Accounts Payable	2021	101000	132400	600370	(378,225.38)
CS	Finance	Treasury Administration	2021	101000	134100	408380	(150.30)
CS	Finance	Treasury Administration	2021	101000	134100	600390	(363,378.06)
CS	Finance	Revenue Management	2021	101000	134200	404220	(89,032.06)
CS	Finance	Revenue Management	2021	101000	134200	406600	(15,337.65)
CS	Finance	Revenue Management	2021	101000	134200	406625	(401,115.13)
CS	Finance	Revenue Management	2021	101000	134200	408380	(2,150.79)
CS	Finance	Revenue Management	2021	101000	134200	408550	(0.23)
CS	Finance	Revenue Management	2021	101000	134200	600400	(1,806,167.85)
CS	Finance	IGC-Rev Mgmt-E911	2021	101000	134271	600410	(12,643.16)
CS	Finance	IGC-Rev Mgmt-PSAR Billing	2021	101000	134272	600420	(151,718.09)
CS	Finance	IGC-Rev Mgmt-Cash Receipts	2021	101000	134273	600430	(196,872.31)
CS	Finance	IGC-Rev Mgmt-In-House Collec	2021	101000	134274	600440	(30,704.85)
CS	Finance	IGC-Rev Mgmt-DCF	2021	101000	134275	600450	(475,022.16)
CS	Finance	IGC-Exter Collect Agncy Recov	2021	101000	134276	600490	(30,704.85)
CS	Finance	Tax Billing	2021	101000	134600	401040	(4,959.11)
CS	Finance	Tax Billing	2021	101000	134600	406625	(8,464.30)
CS	Finance	Tax Billing	2021	101000	134600	408380	(287.82)
CS	Finance	Tax Billing	2021	101000	134600	408550	(75.40)
CS	Finance	Tax Billing	2021	101000	134600	600470	(729,634.36)
CS	Finance	IGC-Tax Billing Utilities	2021	101000	134671	600480	(97,187.28)
CS	Finance	Remittance Processing	2021	101000	134700	600510	(293,661.49)
CS	Finance	IGC-Remittance Processing	2021	101000	134771	600520	(232,902.94)
CS	Chief Fiscal Officer	Chief Fiscal Officer	2021	101000	137000	408380	(322.55)
CS	Chief Fiscal Officer	Chief Fiscal Officer	2021	101000	137000	408580	(100.00)
CS	Chief Fiscal Officer	Chief Fiscal Officer	2021	101000	137000	600330	(387,235.31)
CS	Purchasing	Purchasing Services	2021	101000	138100	406625	(6,881.56)
CS	Purchasing	Purchasing Services	2021	101000	138100	408380	(5,391.81)
CS	Purchasing	Purchasing Services	2021	101000	138100	408580	(332,853.25)
CS	Purchasing	Purchasing Services	2021	101000	138100	600320	(1,740,437.07)
CS	Management & Budget	Management & Budget	2021	101000	139100	408380	(681.42)
CS	Management & Budget	Management & Budget	2021	101000	139100	600300	(1,017,100.59)
CS	Information Technology	Reprographics	2021	101000	142300	408380	(488.43)
CS	Information Technology	Reprographics	2021	101000	142300	600230	(1,165,715.87)
CS	Information Technology	IGC-Repro	2021	101000	142371	600240	(795,750.64)
CS	Information Technology	Records Management	2021	101000	142400	408380	(290.76)
CS	Information Technology	Records Management	2021	101000	142400	600250	(229,497.99)
CS	Human Resources	Employee Relations Admin	2021	101000	181000	408380	(445.59)
CS	Human Resources	Employee Relations Admin	2021	101000	181000	600620	(468,183.92)
CS	Human Resources	Labor Relations	2021	101000	184100	408380	(1,139.27)
CS	Human Resources	Labor Relations	2021	101000	184100	600610	(1,461,401.68)
CS	Human Resources	Employment	2021	101000	184500	406625	(548.30)
CS	Human Resources	Employment	2021	101000	184500	408380	(1,790.05)
CS	Human Resources	Employment	2021	101000	184500	600580	(2,340,180.94)
CS	Human Resources	Benefits	2021	101000	187100	406620	(140,147.99)
CS	Human Resources	Benefits	2021	101000	187100	408380	(1,127.20)
CS	Human Resources	Benefits	2021	101000	187100	600570	(633,169.42)
CS	Economic & Community I	OECD Admin	2021	101000	510500	406625	(1,150.00)
CS	Economic & Community I	OECD Admin	2021	101000	510500	408380	(303.29)
CS	Economic & Community I	OECD Admin	2021	101000	510500	408580	(800.00)
CS	Economic & Community I	OECD Admin	2021	101000	510500	601690	(582,596.94)
CS	Economic & Community I	OECD Data & Analytics	2021	101000	510600	408380	(207.89)
CS	Economic & Community I	OECD Data & Analytics	2021	101000	510600	600110	(1,045,868.34)
CS	Economic & Community I	IGC-OECD GIS Licensing	2021	101000	510671	601900	(325,000.08)
CS	Economic & Community I	IGC-OECD GIS Enterprise Prog	2021	101000	510672	601910	(576,868.26)
CS	Economic & Community I	IGC-OECD GIS Dept Support	2021	101000	510673	601920	(144,000.00)
CS	Economic & Community I	i-team	2021	101000	510800	601940	(423,578.29)
CS	Maintenance & Operation	Facility Maintenance	2021	101000	710500	406625	(498.87)
CS	Maintenance & Operation	Facility Maintenance	2021	101000	710500	408380	(56,520.93)

CSP			Fiscal		Cost		
Cat.	Department	Cost Center Description	Year	Fund	Center	Acct	Actuals
CS	Maintenance & Operation	Facility Maintenance	2021	101000	710500	460040	(98,878.79)
CS	Maintenance & Operation	Facility Maintenance	2021	101000	710500	601000	(5,819,096.96)
CS	Maintenance & Operation	Facilities-Girdwood	2021	101000	710503	601010	(40,641.80)
CS	Maintenance & Operation	Facilities-Eagle River Town Cen	2021	101000	710506	601020	(184,770.09)
CS	Maintenance & Operation	Facilities-Fire Stations	2021	101000	710509	601030	(2,532,703.05)
CS	Maintenance & Operation	Facilities-Libraries	2021	101000	710512	601040	(3,039,615.35)
CS	Maintenance & Operation	Facilities-Fac Maint Whse	2021	101000	710515	601050	(342,295.86)
CS	Maintenance & Operation	Facilities-Traffic	2021	101000	710518	601060	(48,337.27)
CS	Maintenance & Operation	Facilities-RES/Historical Properl	2021	101000	710521	601070	(56,574.15)
CS	Maintenance & Operation	Facilities-Areawide Parks & Rec	2021	101000	710524	601080	(739,793.89)
CS	Maintenance & Operation	Facilities-Health and Human Se	2021	101000	710527	460040	(27,066.74)
CS	Maintenance & Operation	Facilities-Health and Human Se	2021	101000	710527	601090	(1,294,832.93)
CS	Maintenance & Operation	Facilities-ARDSA	2021	101000	710530	460040	(24,308.95)
CS	Maintenance & Operation	Facilities-ARDSA	2021	101000	710530	601100	(4,938.87)
CS	Maintenance & Operation	Facilities-Transit/Centers/Park &	2021	101000	710533	601110	(1,990,404.08)
CS	Maintenance & Operation	Facilities-Fleet Maint	2021	101000	710536	601120	(404,100.76)
CS	Maintenance & Operation	Facilities-Police / Substations	2021	101000	710539	460040	(98,449.09)
CS	Maintenance & Operation	Facilities-Police / Substations	2021	101000	710539	601130	(1,612,665.12)
CS	Maintenance & Operation	Facilities-Eagle River Parks & R	2021	101000	710542	601140	(4,451.51)
CS	Maintenance & Operation	Facilities-City Hall	2021	101000	710545	601150	(320,787.16)
CS	Maintenance & Operation	Facilities-Eagle River Parks & R	2021	101000	710548	601160	(662.86)
CS	Maintenance & Operation	Facilities-Eagle River Parks & R	2021	101000	710551	601170	(16,732.55)
CS	Maintenance & Operation	Facilities-Areawide Parks & Rec	2021	101000	710554	601180	(123,104.83)
CS	Maintenance & Operation	Facilities-Heritage Land Bank	2021	101000	710557	601190	(30,355.89)
CS	Maintenance & Operation	Facilities-Chugiak Fire Service /	2021	101000	710560	601670	(36,911.33)
CS	Maintenance & Operation	Facilities-CBERRRSA	2021	101000	710562	601630	(24.81)
CS	Maintenance & Operation	Facilities-NC HJ Mac Mem Ctr	2021	101000	710563	601200	(10,726.18)
CS	Maintenance & Operation	Facilities-NC Sullivan Arena	2021	101000	710566	601210	(3,222.91)
CS	Maintenance & Operation	Facilities-NC Egan Center	2021	101000	710569	601220	(6,618.52)
CS	Maintenance & Operation	Facilities-NC Performing Arts C	2021	101000	710575	601240	(35,523.44)
CS	Maintenance & Operation	Facilities-NC Anchorage Museu	2021	101000	710581	601260	(3,538.88)
CS	Maintenance & Operation	Facilities-Permit Center	2021	101000	710583	601680	(0.84)
CS	Maintenance & Operation	Facility Capital Improvements	2021	101000	710800	408380	(880.51)
CS	Maintenance & Operation	Facility Capital Improvements	2021	101000	710800	450010	(53.00)
CS	Maintenance & Operation	Facility Capital Improvements	2021	101000	710800	601330	(1,157,169.56)
CS	Information Technology	Admin Support	2021	607000	141100	408380	(791.25)
CS	Information Technology	Admin Support	2021	607000	141100	600260	(1,663,711.63)
CS	Information Technology	IGC - IT Security	2021	607000	143500	408380	(200.62)
CS	Information Technology	IGC - IT Security	2021	607000	143500	601870	(949,804.31)
CS	Information Technology	IGC - IT Security - All	2021	607000	143571	601840	(360,925.65)
CS	Information Technology	IGC - IT Security - No AWWU	2021	607000	143572	601850	(588,878.66)
CS	Information Technology	Fixed Assets	2021	607000	144000	440010	789,218.57
CS	Information Technology	Fixed Assets	2021	607000	144000	600280	(1,067,648.62)
CS	Information Technology	IGC - Microsoft EA SW & HW	2021	607000	144003	601590	(1,454,763.09)
CS	Information Technology	Application Services	2021	607000	145100	408380	(1,845.38)
CS	Information Technology	Application Services	2021	607000	145100	600290	(2,364,343.40)
CS	Information Technology	IGC - SAP Support Centr	2021	607000	146200	408380	(2,965.41)
CS	Information Technology	IGC - SAP Support Centr	2021	607000	146200	601890	(6,667,129.44)
CS	Information Technology	IGC - SAP Capital Recovery	2021	607000	146279	601880	(3,973,188.00)
CS	Information Technology	Projects & Procurement	2021	607000	147300	408380	(1,025.80)
CS	Information Technology	Projects & Procurement	2021	607000	147300	600150	(1,054,321.34)
CS	Information Technology	Desktop Services	2021	607000	148100	408380	(999.86)
CS	Information Technology	Desktop Services	2021	607000	148100	600200	(2,213,848.25)
CS	Information Technology	Network Services	2021	607000	148200	408380	(1,516.20)
CS	Information Technology	Network Services	2021	607000	148200	600100	(5,470,740.48)
CS	Information Technology	IGC - Netwk Svcs - Servers	2021	607000	148271	600540	(2,837,942.25)
CS	Information Technology	IGC - Netwk Svcs - Network	2021	607000	148272	601580	(1,870,461.94)
CS	Information Technology	IGC - Netwk Svcs - Phones	2021	607000	148273	601600	(757,586.28)
CS	Information Technology	Technology Services	2021	607000	148300	600070	(761,065.20)

CSP**Cat.****Department****Cost Center Description****Fiscal****Year****Fund****Cost****Center****Acct****Actuals**(97,802,096.52)



Municipality of Anchorage

Intragovernmental Charges Methodologies

Department: Assembly

Contact: Desirea Camacho

Fund: 101000

Telephone: 343-4376

Cost Pool (Cost Center / Name): 102003 / Clerk Agenda Control

Services Provided: Agenda control in the form of receiving, compiling, managing, and distributing Assembly agenda items submitted by all Municipal departments. Assembly agenda documents consist of items such as Assembly Information Memorandums (AIM), Assembly Memorandums (AM), Assembly Resolutions (AR), and Assembly Ordinances (AO). (AMC 2.20 - Assembly, Generally)

Charge-Out Methodology: Allocation of cost pool is based on the ratio of prior two year average of Assembly agenda items successfully processed through the electronic document routing system (PACE), attributable to the requesting department to total prior two year average number of Assembly agenda items successfully processed through PACE. Central service allocating departments are omitted and thus the cost that would be assigned to them is allocated to direct service departments receiving this service.

Allocation Factor:

Month-end automated calculation



Municipality of Anchorage

Intragovernmental Charges Methodologies

Department: Assembly

Contact: Desirea Camacho

Fund: 101000

Telephone: 343-4376

Cost Pool (Cost Center / Name): 102006 / Clerk Municipal Audit

Services Provided: Annual financial audit of Municipal entities performed by certified public accountants contracted through the Municipal purchasing process. The Municipal Clerk administers the contract for the annual municipal independent financial audit and such other contracts as may be assigned by ordinance. (AMC 2.20.055.B.7)

Charge-Out Methodology: Allocation of cost pool is based on the ratio of current year budgeted labor costs for each recipient cost center to total current year budgeted labor costs for all recipient cost centers. Central service allocating departments are omitted and thus the cost that would be assigned to them is allocated to the direct service departments receiving this service. AWWU, ML&P, and Port are not included in this allocation since the financial audit costs are charged to them directly.

Allocation Factor:

Month-end automated calculation



Municipality of Anchorage

Intragovernmental Charges Methodologies

Department: Assembly

Contact: Desirea Camacho

Fund: 101000

Telephone: 343-4376

Cost Pool (Cost Center / Name): 102007 / Clerk Liquor License

Services Provided: Business License Official's processing of liquor license applications and renewals for local government action. (AMC 2.20, AMC 2.30, AMC 12.05, and AMC 21.02)

Charge-Out Methodology: 100% to the Anchorage Police Department, Anchorage Police Service Area

Allocation Factor:

Month-end automated calculation



Municipality of Anchorage

Intragovernmental Charges Methodologies

Department: Assembly

Contact: Darrell Hess

Fund: 101000

Telephone: 343-4783

Cost Pool (Cost Center / Name): 103000 / Ombudsman

Services Provided: Investigation of complaints or inquires about the Municipality or Anchorage School District (ASD), per Article IV. - The Assembly Section 4.07 and Title 2 - Legislative Branch[1] Regulation 2.60 - Office of the Ombudsman.

Provides value by preventing complaints, increasing efficiencies, and saving money by addressing issues and recommending changes to municipal policies, forms, and codes. Can act as an outside voice that advocates for fairness in government.

Charge-Out Methodology: Allocation of cost pool is based on the ratio of prior two-year average of transaction counts of contracts, referrals, and cases indicated in City View software, attributable to each recipient department to the total number of transaction counts of contracts, referrals, and cases indicated in City View for all recipient departments. Central service allocating departments are omitted and thus the cost that would be assigned to them is allocated to the direct service departments receiving this service. Activity attributable to the Anchorage School District (ASD) or not attributable to any specific Municipal department is allocated to Areawide service area.

Allocation Factor:

Month-end automated calculation



Municipality of Anchorage

Intragovernmental Charges Methodologies

Department: Internal Audit

Contact: Mike Chadwick

Fund: 101000

Telephone: 343-4438

Cost Pool (Cost Center / Name): 106000 / Internal Audit

Services Provided: Provides the Assembly, school district, and Mayor with independent compliance and performance audits to determine whether government operations are adequately controlled.

Charge-Out Methodology: Allocation of cost pool is based on the ratio of current year budgeted labor costs for each recipient cost center to total current year budgeted labor costs for all recipient cost centers. Central service allocating departments are omitted and thus the cost that would be assigned to them is allocated to the direct service departments receiving this service.

Allocation Factor:

Month-end automated calculation



Municipality of Anchorage

Intragovernmental Charges Methodologies

Department: Office of the Mayor

Contact: Marilyn Banzhaf

Fund: 101000

Telephone: 343-4281

Cost Pool (Cost Center / Name): 111100 / Mayor

Services Provided: Provides leadership of all Municipal departments and ensuring compliance with charter and Municipal Code. (AMC 3.20.020 - Powers of the Mayor; 3.20.040 - Office of the Mayor)

Charge-Out Methodology: Allocation of cost pool is based on the ratio of current year budgeted labor costs for each recipient cost center to total current year budgeted labor costs for all recipient cost centers. Central service allocating departments are omitted and thus the cost that would be assigned to them is allocated to the direct service departments receiving this service. Unallowable costs will be removed from allocations before each year end.

Allocation Factor:

Month-end automated calculation



Municipality of Anchorage

Intragovernmental Charges Methodologies

Department: Municipal Manager

Contact: Heather MacAlpine

Fund: 101000

Telephone: 343-4890

Cost Pool (Cost Center / Name): 113200 / Office of Equal Opportunity

Services Provided: Provides primary functions of: Equal Employment Opportunity Program, Small Business Program, and Disadvantaged Business Enterprise (DBE) Liaison Officer (LO).

Charge-Out Methodology: Allocation of cost pool is based on the estimated percentage of time spent on each primary function provided by the Office of Equal Opportunity.

Allocation Factor:

Month-end automated calculation



Municipality of Anchorage

Intragovernmental Charges Methodologies

Department: Municipal Manager

Contact: Heather MacAlpine

Fund: 101000

Telephone: 343-4890

Cost Pool (Cost Center / Name): 113271 / IGC OEO Equal Employment Opportunity Prg

Services Provided: Equal Employment Opportunity Program - UMTA C 4704.1 and Title VII of the Civil Rights Act of 1964 - Department administers discrimination and harassment complaints, sexual harassment training, and the implementation of the Municipality of Anchorage Affirmative Action Plan

Charge-Out Methodology: Allocation of cost pool is based on the ratio of current year budgeted position counts for each recipient cost center to total current year budgeted position counts for all recipient cost centers. Central service allocating departments are omitted and thus the cost that would be assigned to them is allocated to the direct service departments receiving this service.

Allocation Factor:

Month-end automated calculation



Municipality of Anchorage

Intragovernmental Charges Methodologies

Department: Municipal Manager

Contact: Heather MacAlpine

Fund: 101000

Telephone: 343-4890

Cost Pool (Cost Center / Name): 113272 / IGC OEO Small Business

Services Provided: Provides Small Business Program for all Municipal small businesses, with a long-term goal of Municipal certifications for small business.

Charge-Out Methodology: 100% to the Municipal Manager Department, Office of Equal Opportunity Division, Areawide Service Area

Allocation Factor:

Month-end automated calculation



Municipality of Anchorage

Intragovernmental Charges Methodologies

Department: Municipal Manager

Contact: Heather MacAlpine

Fund: 101000

Telephone: 343-4890

Cost Pool (Cost Center / Name): 113273 / IGC-OEO-Contract DBE

Services Provided: Provides Disadvantaged Business Enterprise (DBE) Liaison Officer (LO), in compliance with requirements to receive federal funding from the Department of Transportation (DOT) (49CFR 26.37). Provides oversight of federal contract compliances, annual required reporting, ensures nondiscrimination in the award and administration of DOT-assisted projects with monitoring and enforcement, and Small Business Development Program. Assigned 5% DBE goal (minority business) for federal financial assistance.

Charge-Out Methodology: Allocation of cost pool is based on equal allocation to each Municipal department receiving federal funding from the DOT.

Allocation Factor:

Month-end automated calculation



Municipality of Anchorage

Intragovernmental Charges Methodologies

Department: Municipal Attorney

Contact: Steve Brister

Fund: 101000

Telephone: 343-4325

Cost Pool (Cost Center / Name): 115100 / Civil Law

Services Provided: Provides legal counsel for civil all Municipal matters. Provides value by providing legal counsel, support, and advice on specific legislation, the Municipal Code, Charter, and legislative procedures and also provides legal work with a low incidence of remand or reversal on appeal. Represents the Municipality in all litigation.

Charge-Out Methodology: Allocation of cost pool is based on the ratio of prior five-year average time spent representing requesting municipal departments on civil matters using "Time Matters" application software, to total prior five-year average time spent representing all municipal departments receiving this service. Central service allocating departments are omitted and thus the cost that would be assigned to them is allocated to direct service departments receiving this service.

Allocation Factor:

Month-end automated calculation



Municipality of Anchorage

Intragovernmental Charges Methodologies

Department: Municipal Attorney

Contact: Steve Brister

Fund: 101000

Telephone: 343-4325

Cost Pool (Cost Center / Name): 115200 / Criminal

Services Provided: Provides legal services to prosecute misdemeanor and traffic offenses. Maintains a high conviction rate resulting in punished offenders, deterred crime, and increased dollars awarded to victims in restitution.

Charge-Out Methodology: 100% to the Anchorage Police Department, Anchorage Police Service Area

Allocation Factor:

Month-end automated calculation



Municipality of Anchorage

Intragovernmental Charges Methodologies

Department: Municipal Attorney

Contact: Steve Brister

Fund: 101000

Telephone: 343-4325

Cost Pool (Cost Center / Name): 115300 / Administrative Hearing

Services Provided: Provides adjudication of administrative code violations. Provides a quick turnaround time for hearings and decisions resulting in an increase in citizen satisfaction with the hearing process.

Charge-Out Methodology: Allocation of cost pool is based on the ratio of prior five-year average time spent representing requesting municipal departments on civil matters using "Time Matters" application software, to total prior five-year average time spent representing all municipal departments receiving this service. Central service allocating departments are omitted and thus the cost that would be assigned to them is allocated to direct service departments receiving this service.

Allocation Factor:

Month-end automated calculation



Municipality of Anchorage

Intragovernmental Charges Methodologies

Department: Municipal Attorney

Contact: Steve Brister

Fund: 101000

Telephone: 343-4325

Cost Pool (Cost Center / Name): 115400 / Muni Attorney Administration

Services Provided: Provides administrative services to other sections within Office of the Municipal Attorney. Provides value by acting as chief counsel to the municipal departments, including the Mayor, Assembly, Anchorage School District, and all executive, legislative, department, agencies, boards, and commissions. Also adds value of keeping turnover low and providing for continuing legal education (CLE) training allows for high quality and efficient legal work.

Charge-Out Methodology: Allocation of cost pool is based on estimated time spent on each cost center in the Office of the Municipal Attorney and each municipal department, updated by Municipal Attorney annually.

Allocation Factor:

Month-end automated calculation



Municipality of Anchorage

Intragovernmental Charges Methodologies

Department: Municipal Manager

Contact: Craig Fetterman

Fund: 101000

Telephone: 343-1405

Cost Pool (Cost Center / Name): 121000 / Muni Manager Administration

Services Provided: The office of the Municipal Manager is responsible to the Mayor for overall Municipal Administrative policy, public safety, and operations of the Municipality and provides management operational oversight to multiple department's including the Municipality Utilities and Enterprises. (AMC 3.20.045 - Office of the Municipal Manager)

Charge-Out Methodology: Allocation of cost pool is based on the ratio of current year budgeted labor costs for each recipient cost center to total current year budgeted labor costs for all recipient cost centers. Central service allocating departments are omitted and thus the cost that would be assigned to them is allocated to the direct service departments receiving this service.

Allocation Factor:

Month-end automated calculation



Municipality of Anchorage

Intragovernmental Charges Methodologies

Department: Real Estate

Contact: Tawny Klebesadel

Fund: 101000

Telephone: 343-7534

Cost Pool (Cost Center / Name): 122300 / Leases Administration

Services Provided: Provides negotiations and management of municipal leases, acquisitions, and disposition of office, warehouse, and other types of municipal space, and municipal land required by all municipal agencies.

Charge-Out Methodology: Allocation of cost pool is based on ratio of square footage use by each lease facility cost pool, to total square footage within this cost pool.

Allocation Factor:

Month-end automated calculation



Municipality of Anchorage

Intragovernmental Charges Methodologies

Department: Real Estate

Contact: Tawny Klebesadel

Fund: 101000

Telephone: 343-7534

Cost Pool (Cost Center / Name): 122301 / Leases Parking Garage

Services Provided: Provides real estate lease services for municipal use of the Parking Garage at Sixth and G, Anchorage, AK 99501.

Charge-Out Methodology: 100% to the Public Transportation Department, Areawide Service Area

Allocation Factor:

Month-end automated calculation



Municipality of Anchorage

Intragovernmental Charges Methodologies

Department: Real Estate

Contact: Tawny Klebesadel

Fund: 101000

Telephone: 343-7534

Cost Pool (Cost Center / Name): 122302 / Leases City Hall

Services Provided: Provides real estate lease services for municipal use of City Hall located at 632 West Sixth Avenue, Anchorage, AK 99501.

Charge-Out Methodology: Allocation of cost pool is based on ratio of square footage use by department, to total square footage within this cost pool. Charged to all departments, including central service allocating departments that receive this service.

Allocation Factor:

Month-end automated calculation



Municipality of Anchorage

Intragovernmental Charges Methodologies

Department: Real Estate

Contact: Tawny Klebesadel

Fund: 101000

Telephone: 343-7534

Cost Pool (Cost Center / Name): 122303 / Leases ERTC

Services Provided: Provides real estate lease services for municipal use of the Eagle River Town Center (ERTC) located at 12001 Business Boulevard, Eagle River, AK 99577. Does not include Unit #3.

Charge-Out Methodology: Allocation of cost pool is based on ratio of square footage use by department, to total square footage within this cost pool. Charged to all departments, including central service allocating departments that receive this service.

Allocation Factor:

Month-end automated calculation



Municipality of Anchorage

Intragovernmental Charges Methodologies

Department: Real Estate

Contact: Tawny Klebesadel

Fund: 101000

Telephone: 343-7534

Cost Pool (Cost Center / Name): 122304 / Leases Libraries

Services Provided: Provides real estate lease services for municipal use of the Muldoon Library in the North East Community Center / Muldoon Community Center located at 1251 Muldoon Road, Anchorage, AK 99504.

Charge-Out Methodology: 100% to the Library Department, Areawide Service Area.

Allocation Factor:

Month-end automated calculation



Municipality of Anchorage

Intragovernmental Charges Methodologies

Department: Real Estate

Contact: Tawny Klebesadel

Fund: 101000

Telephone: 343-7534

Cost Pool (Cost Center / Name): 122306 / Leases Traffic

Services Provided: Provides real estate lease services for municipal use of the Traffic Signals Engineering Warehouse / Beardsley Building.

Charge-Out Methodology: 100% to the Traffic Department, Areawide Service Area

Allocation Factor:
Month-end automated calculation



Municipality of Anchorage

Intragovernmental Charges Methodologies

Department: Real Estate

Contact: Tawny Klebesadel

Fund: 101000

Telephone: 343-7534

Cost Pool (Cost Center / Name): 122307 / Leases Recreation

Services Provided: Provides real estate lease services for municipal use of North East Community Center / Muldoon Community Center located at 1251 Muldoon Road, Anchorage, AK 99504.

Charge-Out Methodology: 100% to the Anchorage Parks & Recreation Department, Anchorage Parks & Recreation Service Area

Allocation Factor:
Month-end automated calculation



Municipality of Anchorage

Intragovernmental Charges Methodologies

Department: Real Estate

Contact: Tawny Klebesadel

Fund: 101000

Telephone: 343-7534

Cost Pool (Cost Center / Name): 122309 / Leases Permit Center

Services Provided: Provides real estate lease services for municipal use of the Anchorage Permit & Development Center located at 4700 Elmore Road, Anchorage, AK 99507.

Charge-Out Methodology: Allocation of cost pool is based on ratio of square footage use by department, to total square footage within this cost pool. Charged to all departments, including central service allocating departments that receive this service.

Allocation Factor:

Month-end automated calculation



Municipality of Anchorage

Intragovernmental Charges Methodologies

Department: Real Estate

Contact: Tawny Klebesadel

Fund: 101000

Telephone: 343-7534

Cost Pool (Cost Center / Name): 122310 / Leases Police

Services Provided: Provides real estate leasing services for municipal use of facilities located at: the State of Alaska, Boney Court House for Warrants located at 303 K Street, Anchorage, AK 99501, and the Spenard / Seely Substation located at Westchester Lagoon (the Spenard / Seely Substation will not be used after 2019).

Charge-Out Methodology: 100% to the Anchorage Police Department, Anchorage Police Service Area

Allocation Factor:

Month-end automated calculation



Municipality of Anchorage

Intragovernmental Charges Methodologies

Department: Municipal Manager

Contact: Craig Fetterman

Fund: 101000

Telephone: 343-1405

Cost Pool (Cost Center / Name): 124200 / Office of Emergency Management

Services Provided: Provides emergency response preparedness. Provides emergency preparedness, planning, Emergency Operations Center (EOC) training and education outreach and ensures compliance with federal regulations. Services provided to all Municipal departments except AWWU and ML&P.

Charge-Out Methodology: Allocation of cost pool is based on the ratio of current year budgeted labor costs for each recipient cost center to total current year budgeted labor costs for all recipient cost centers. Central service allocating departments are omitted and thus the cost that would be assigned to them is allocated to the direct service departments receiving this service.

Allocation Factor:
Month-end automated calculation



Municipality of Anchorage

Intragovernmental Charges Methodologies

Department: Municipal Manager

Contact: Tracy Mears

Fund: 101000

Telephone: 343-2527

Cost Pool (Cost Center / Name): 124700 / Risk Management

Services Provided: Processes claims for and against the Municipality from accident, injury, or property damage and related collections administration.

Charge-Out Methodology: 100% to the Municipal Manager Department, Risk Division, General Liability / Workers' Compensation Fund (602).

Allocation Factor:

Month-end automated calculation



Municipality of Anchorage

Intragovernmental Charges Methodologies

Department: Municipal Manager

Contact: Tracy Mears

Fund: 101000

Telephone: 343-2527

Cost Pool (Cost Center / Name): 124900 / Safety

Services Provided: Provides safety training and liability mitigation, with a mission to reduce workers' compensation and tort liability claims.

Charge-Out Methodology: 100% to the Municipal Manager Department, Risk Division, General Liability / Workers' Compensation Fund (602).

Allocation Factor:

Month-end automated calculation



Municipality of Anchorage

Intragovernmental Charges Methodologies

Department: Finance

Contact: Linda Culver

Fund: 101000

Telephone: 343-6765

Cost Pool (Cost Center / Name): 132100 / Controller Administration

Services Provided: Houses the Controller position that provides oversight of the administration of the Controller division and preparation of the Comprehensive Annual Financial Report (CAFR).

Charge-Out Methodology: Allocation of cost pool is based on the estimated percentage of time spent with each agency under the Controller Division.

Allocation Factor:

Month-end automated calculation



Municipality of Anchorage

Intragovernmental Charges Methodologies

Department: Finance

Contact: Linda Culver

Fund: 101000

Telephone: 343-6765

Cost Pool (Cost Center / Name): 132200 / Central Accounting

Services Provided: Provides and maintains Municipal accounting records and prepares the Comprehensive Annual Financial Report (CAFR).

Services provided include:

- Grant accounting
- Reconciliation accounting
- Fund accounting
 - Fixed asset management
 - Fiduciary fund accounting
 - Enterprise fund accounting
- Subject Matter Experts (SMEs) for some SAP functionality

Charge-Out Methodology: Allocation of cost pool is based on the ratio of estimated time spent on each municipal fund to total time spend on all municipal funds.

Allocation Factor:

Month-end automated calculation



Municipality of Anchorage

Intragovernmental Charges Methodologies

Department: Finance

Contact: Renee Behrendt

Fund: 101000

Telephone: 343-6935

Cost Pool (Cost Center / Name): 132300 / Payroll

Services Provided: Issues payroll checks and maintains employee records for taxes and other deductions.

Charge-Out Methodology: Allocation of cost pool is based on the ratio of budgeted labor associated with position duties.

Allocation Factor:

Month-end automated calculation



Municipality of Anchorage

Intragovernmental Charges Methodologies

Department: Finance

Contact: David Hertrich

Fund: 101000

Telephone: 343-6937

Cost Pool (Cost Center / Name): 132400 / Accounts Payable

Services Provided: Processes payments for goods and services purchased for all Municipal departments, including enterprise and utilities.

Charge-Out Methodology: Allocation of cost pool is based on the prior two years percentage of vouchers per department to total number of vouchers processed for all recipients, includes enterprise and utilities.

Allocation Factor:

Month-end automated calculation



Municipality of Anchorage

Intragovernmental Charges Methodologies

Department: Finance

Contact: Blyss Cruz

Fund: 101000

Telephone: 343-6965

Cost Pool (Cost Center / Name): 134100 / Treasury Administration

Services Provided: Provides direction and supervision for all Treasury sections including Tax Billing and collection, Remittance Processing, and Revenue Management, and also monitors and reports on the Municipality of Anchorage (MOA) Trust Fund (730), and the Police/Fire Retiree Medical Liability Fund (281). No direct allocation required for the property tax collection cost pool as cost are held as an area wide tax cost.

Charge-Out Methodology: Allocation of cost pool is based on the ratio of current year budgeted position costs in each agency within the Treasury Division after MOA Trust Fund (730) and Police/Fire Retiree Medical Liability Fund (281) are charged for estimated time spent.

Allocation Factor:

Month-end automated calculation



Municipality of Anchorage

Intragovernmental Charges Methodologies

Department: Finance

Contact: Blyss Cruz

Fund: 101000

Telephone: 343-6965

Cost Pool (Cost Center / Name): 134200 / Revenue Management

Services Provided: Performs all functions associated with administration and enforcement of self-reported taxes (room taxes, rental vehicles, and tobacco taxes) and management and analysis of General Government revenues.

Charge-Out Methodology: Allocation of cost pool is based on the estimated time spent, using budgeted labor costs for specifically dedicated positions for year.

Allocation Factor:

Month-end automated calculation



Municipality of Anchorage

Intragovernmental Charges Methodologies

Department: Finance

Contact: Blyss Cruz

Fund: 101000

Telephone: 343-6965

Cost Pool (Cost Center / Name): 134271 / IGC Rev Mgmt E911

Services Provided: Administers accounts receivable and processes payments received for E911 revenue.

Charge-Out Methodology: 50% to the Anchorage Fire Department and 50% to the Anchorage Police Department, all to the E911 Surcharge Fund (211).

Allocation Factor:

Month-end automated calculation



Municipality of Anchorage

Intragovernmental Charges Methodologies

Department: Finance

Contact: Blyss Cruz

Fund: 101000

Telephone: 343-6965

Cost Pool (Cost Center / Name): 134272 / IGC Rev Mgmt PSAR Billing

Services Provided: Administers General Government accounts receivable and processes payments received for PSAR billing. Utilities excluded. Service to utilities limited to payment processing and considered minimal and not allocated.

Charge-Out Methodology: Allocation of cost pool is based on the number of invoices prior year generated out of the module.

Allocation Factor:

Month-end automated calculation



Municipality of Anchorage

Intragovernmental Charges Methodologies

Department: Finance

Contact: Blyss Cruz

Fund: 101000

Telephone: 343-6965

Cost Pool (Cost Center / Name): 134273 / IGC Rev Mgmt Cash Receipts

Services Provided: Records and audits all paper-based and limited electronic cash receipts for all departments city-wide. These functions are based on MOA cash handling policy that ensures quality of data and protects against monetary loss. Utilities included.

Charge-Out Methodology: Allocation of cost pool is based on number of prior year cash receipts generated by each recipient department over all cash receipts generated by all departments in the pool

Allocation Factor:

Month-end automated calculation



Municipality of Anchorage

Intragovernmental Charges Methodologies

Department: Finance

Contact: Blyss Cruz

Fund: 101000

Telephone: 343-6965

Cost Pool (Cost Center / Name): 134274 / IGC Rev Mgmt In House Collections

Services Provided: Department administers city-wide contract with a collection agency to refer and collect delinquent accounts receivable for fines and invoiced services, including, but not limited to delinquent self-reporting taxes, unpaid ambulance fees, library fees, utility bills, miscellaneous billings, and billings from project 134272 (PSAR billings). Diminimus amounts (less than .2%) are not directly allocated.

Charge-Out Methodology: Allocation of cost pool is based on prior year transaction count of accounts referred to the contracted collection agency.

Allocation Factor:

Month-end automated calculation



Municipality of Anchorage

Intragovernmental Charges Methodologies

Department: Finance

Contact: Blyss Cruz

Fund: 101000

Telephone: 343-6965

Cost Pool (Cost Center / Name): 134275 / IGC Rev Mgmt DCF

Services Provided: Administers collection efforts related to Delinquent Criminal/Civil Fines & Fees (DCF) on behalf of APD & Legal Departments, excluding utilities. DCF is a specialized function, and these functional costs are allocated to APD and Legal Department.

Charge-Out Methodology: Allocation of cost pool is based on prior year transaction count by department.

Allocation Factor:
Month-end automated calculation



Municipality of Anchorage

Intragovernmental Charges Methodologies

Department: Finance

Contact: Blyss Cruz

Fund: 101000

Telephone: 343-6965

Cost Pool (Cost Center / Name): 134276 / IGC Exter Collect Agency Recov

Services Provided: Department administers recoveries under city-wide collection agency contract, inclusive of recoveries for utilities. Diminimus amounts (less than .2%) are not directly allocated.

Charge-Out Methodology: Allocation of cost pool is based on the cost to process recoveries based on prior year transaction count of recoveries by department.

Allocation Factor:

Month-end automated calculation



Municipality of Anchorage

Intragovernmental Charges Methodologies

Department: Finance

Contact: Blyss Cruz

Fund: 101000

Telephone: 343-6965

Cost Pool (Cost Center / Name): 134600 / Tax Billing

Services Provided: Provides billing, collections, and management of property tax receivables, processes tax payments, and requests for tax information Area-Wide. Utilities excluded.

Charge-Out Methodology: Allocation of cost pool is based on direct cost of activities associated with tax receivables to stay in Areawide or to become a pool that is sent to multiple departments, including utilities.

Allocation Factor:

Month-end automated calculation



Municipality of Anchorage

Intragovernmental Charges Methodologies

Department: Finance

Contact: Blyss Cruz

Fund: 101000

Telephone: 343-6965

Cost Pool (Cost Center / Name): 134671 / IGC Tax Billing Utilities

Services Provided: Provides cashiering function associated with processing payments at Treasury public counter for many Municipal departments, including utilities.

Charge-Out Methodology: Allocation of cost pool is based costs associated with Treasury public counter payments based on volume of prior year payment transactions for identified departments, including utilities.

Allocation Factor:

Month-end automated calculation



Municipality of Anchorage

Intragovernmental Charges Methodologies

Department: Finance

Contact: Blyss Cruz

Fund: 101000

Telephone: 343-6965

Cost Pool (Cost Center / Name): 134700 / Remittance Processing

Services Provided: Processes property tax and Municipal utility payments and ensures proper posting to customer accounts for Areawide and Municipal utility agencies.

Charge-Out Methodology: Allocation of cost pool is based on the prior year number of property tax remittance bills processed to stay in Areawide or to become a pool that is sent to Municipal utility agencies.

Allocation Factor:

Month-end automated calculation



Municipality of Anchorage

Intragovernmental Charges Methodologies

Department: Finance

Contact: Blyss Cruz

Fund: 101000

Telephone: 343-6965

Cost Pool (Cost Center / Name): 134771 / IGC Remittance Processing

Services Provided: Processes property tax and Municipal utility payments and ensures proper posting to customer accounts for Municipal utility agencies.

Charge-Out Methodology: Allocation of cost pool is based on the prior year number of bills processed and type of utility.

Allocation Factor:

Month-end automated calculation



Municipality of Anchorage

Intragovernmental Charges Methodologies

Department: Chief Fiscal Officer

Contact: Marilyn Banzhaf

Fund: 101000

Telephone: 343-4281

Cost Pool (Cost Center / Name): 137000 / Chief Fiscal Officer

Services Provided: Oversees all financial matters of the Municipality and is responsible for the management and operation of the departments as set forth in municipal code. (AMC 3.20.050 - Office of the Chief Fiscal Officer)

Charge-Out Methodology: Allocation of cost pool is based on the ratio of current year budgeted labor costs for each recipient cost center to total current year budgeted labor costs for all recipient cost centers. Central service allocating departments are omitted and thus the cost that would be assigned to them is allocated to the direct service departments receiving this service. Unallowable costs will be removed from allocations before each year end.

Allocation Factor:

Month-end automated calculation



Municipality of Anchorage

Intragovernmental Charges Methodologies

Department: Purchasing

Contact: Ronald Hadden

Fund: 101000

Telephone: 343-4170

Cost Pool (Cost Center / Name): 138100 / Purchasing Services

Services Provided: Provides procurement services to Municipal departments in compliance with Anchorage Municipal Code Title 7 and ensures contract compliance

Charge-Out Methodology: Allocation of cost pool is based on weighted transaction and or line count of number of purchase orders, change orders, accounts payable transactions in gross, requisitions, and credit card activity.

Allocation Factor:

Month-end automated calculation



Municipality of Anchorage

Intragovernmental Charges Methodologies

Department: Office of Management & Budget

Contact: Marilyn Banzhaf

Fund: 101000

Telephone: 343-4281

Cost Pool (Cost Center / Name): 139100 / Management & Budget

Services Provided: Provides fiscal and operational planning, monitoring compliance with Municipal policies and standards, management analysis, budgeting and program evaluation, and preparation and management of the Municipal budget.

Provide fiscal responsibility and support pursuant to Anchorage Municipal Code (AMC 6.10) and the Mayors vision of a safe, secure, and strong municipality.

Charge-Out Methodology: Allocation of cost pool is based on the ratio of estimated time spent on each municipal fund to total time spend on all municipal funds.

Allocation Factor:

Month-end automated calculation



Municipality of Anchorage

Intragovernmental Charges Methodologies

Department: Information Technology

Contact: Linda Dotzler

Fund: 607000

Telephone: 343-6914

Cost Pool (Cost Center / Name): 141100 / Administration Support

Services Provided: Provides administrative services within the Information Technology department.

Charge-Out Methodology: Allocation of cost pool is based on the ratio of current year budgeted labor costs for each recipient cost center to total current year budgeted labor costs for all recipient cost centers.

Allocation Factor:

Month-end automated calculation



Municipality of Anchorage

Intragovernmental Charges Methodologies

Department: Information Technology

Contact: Linda Dotzler

Fund: 101000

Telephone: 343-6914

Cost Pool (Cost Center / Name): 142300 / Reprographics / Mailroom

Services Provided: Provides graphic design, forms coordination, printing, mailroom, and courier services for all Municipal departments.

Charge-Out Methodology: Allocation of cost pool is based on budgeted cost of activities associated with mailroom: to stay in Areawide, or reprographics: to become a pool that is sent to multiple departments.

Allocation Factor:

Month-end automated calculation



Municipality of Anchorage

Intragovernmental Charges Methodologies

Department: Information Technology

Contact: Linda Dotzler

Fund: 101000

Telephone: 343-6914

Cost Pool (Cost Center / Name): 142371 / IGC Repro

Services Provided: Provides graphic design, forms coordination, and printing for all Municipal departments

Charge-Out Methodology: Allocation of cost pool is based on prior two-year average use of reprographics services based on Service Request forms. AWWU and ML&P are excluded as they are billed directly.

Allocation Factor:

Month-end automated calculation



Municipality of Anchorage

Intragovernmental Charges Methodologies

Department: Information Technology

Contact: Shawn McTaggart

Fund: 101000

Telephone: 343-4286

Cost Pool (Cost Center / Name): 142400 / Records Management

Services Provided: Provides storage, archiving, and disposal of hard-copy written records for all Municipal departments that opt to use this service.

Charge-Out Methodology: Allocation of cost pool is based on prior two-year use of records storage space by box count.

Allocation Factor:

Month-end automated calculation



Municipality of Anchorage

Intragovernmental Charges Methodologies

Department: Information Technology

Contact: Linda Dotzler

Fund: 607000

Telephone: 343-6914

Cost Pool (Cost Center / Name): 142500 / Financial Services

Services Provided: Provides budgeting, accounts payable, procurement, IGCs, fixed assets, software asset management services for the Information Technology department and approval of software and hardware purchases and software management for other municipal departments.

Charge-Out Methodology: Allocation of cost pool is based on the ratio of current year budgeted labor costs for each recipient cost center to total current year budgeted labor costs for all recipient cost centers.

Allocation Factor:

Month-end automated calculation



Municipality of Anchorage

Intragovernmental Charges Methodologies

Department: Information Technology

Contact: Linda Dotzler

Fund: 607000

Telephone: 343-6914

Cost Pool (Cost Center / Name): 143500 / IT Security

Services Provided: Provides enterprise management of all Municipal systems and Drive Encryption; audits departments to verify that regulatory requirements are met; and provides IT security from internal and external threats to the operation of the Municipal computer system.

Charge-Out Methodology: Allocation of cost pool is based on the ratio of current year budgeted labor costs for each recipient cost center to total current year budgeted labor costs for all recipient cost centers. Central service allocating departments are omitted and thus the cost that would be assigned to them is allocated to the direct service departments receiving this service.

Allocation Factor:

Month-end automated calculation



Municipality of Anchorage

Intragovernmental Charges Methodologies

Department: Information Technology

Contact: Linda Dotzler

Fund: 607000

Telephone: 343-6914

Cost Pool (Cost Center / Name): 143571 / IT Security - ALL

Services Provided:

Charge-Out Methodology:

Allocation Factor:



Municipality of Anchorage

Intragovernmental Charges Methodologies

Department: Information Technology

Contact: Linda Dotzler

Fund: 607000

Telephone: 343-6914

Cost Pool (Cost Center / Name): 143572 / IT Security – No AWWU

Services Provided:

Charge-Out Methodology:

Allocation Factor:



Municipality of Anchorage

Intragovernmental Charges Methodologies

Department: Information Technology

Contact: Linda Dotzler

Fund: 607000

Telephone: 343-6914

Cost Pool (Cost Center / Name): 144000 / Fixed Assets

Services Provided: Provides recovery of debt-funded technology-related capital projects via depreciation and interest expense. Includes licenses, laptops, and other IT owned assets used to manage and maintain the IT environment and support customers.

Charge-Out Methodology: Allocation of cost pool is based on ratio of budgeted labor for each recipient to total budgeted labor of all recipients with AWWU and ML&P adjusted by application use estimate.

Allocation Factor:

Month-end automated calculation



Municipality of Anchorage

Intragovernmental Charges Methodologies

Department: Information Technology

Contact: Linda Dotzler

Fund: 607000

Telephone: 343-6914

Cost Pool (Cost Center / Name): 144003 / IGC MicroSoft EA SW & HW Upgrades

Services Provided: Provides MicroSoft Enterprise Agreement (MS EA) hardware and software maintenance and subscription costs that ensure that the municipality has current application software and recovery of muni-wide computer replacements. AWWU and ML&P are excluded because they do not receive this service.

Charge-Out Methodology: Allocation of cost pool is based on ratio of total computers for each recipient department to total computers for all recipient departments. AWWU and ML&P are excluded.

Allocation Factor:

Month-end automated calculation



Municipality of Anchorage

Intragovernmental Charges Methodologies

Department: Information Technology

Contact: Linda Dotzler

Fund: 607000

Telephone: 343-6914

Cost Pool (Cost Center / Name): 145100 / Application Services

Services Provided: Provides support for enterprise and department application systems. Some examples of applications supported are: Pay Advice; Payment Net; PeopleSoft; SAP; Muniverse; Newsletters; Open Enrollment; Outage Tracking SharePoint Site; Muni.org (Administration & Content); Communications Tracking; QuesticaBudget; and NEO-Gov New Hire Onboarding.

Charge-Out Methodology: Allocation of cost pool is based on the ratio of budgeted labor for each recipient to total budgeted labor of all recipients with AWWU and MLP adjusted by application use estimate.

Allocation Factor:

Month-end automated calculation



Municipality of Anchorage

Intragovernmental Charges Methodologies

Department: Information Technology

Contact: Linda Dotzler

Fund: 607000

Telephone: 343-6914

Cost Pool (Cost Center / Name): 145500 / ERP Services

Services Provided: Provides support for PeopleSoft Applications.

Charge-Out Methodology: Allocation of cost pool is based on transaction counts in PeopleSoft. ML&P and AWWU by transaction counts and general government and enterprise departments by line count to determine usage at the DeptID level (transaction count at the business unit level).

Allocation Factor:

Month-end automated calculation



Municipality of Anchorage

Intragovernmental Charges Methodologies

Department: Information Technology

Contact: Linda Dotzler

Fund: 607000

Telephone: 343-6914

Cost Pool (Cost Center / Name): 146200 / IGC - SAP Support Center

Services Provided: Provides operating support for SAP applications, including consulting, security / access, and training.

Charge-Out Methodology: Allocation of cost pool is based on approved "SAP Capital Expenditure Cost Pools and Allocation Recommendations" that: identified SAP modules / functions, determined factors to best represent cost-causer / cost-payer for each module / function, and then weighted each module / function by the estimated cost of each SAP module.

Allocation Factor:

Month-end automated calculation



Municipality of Anchorage

Intragovernmental Charges Methodologies

Department: Information Technology

Contact: Linda Dotzler

Fund: 607000

Telephone: 343-6914

Cost Pool (Cost Center / Name): 147300 / Projects & Procurement

Services Provided: Provides oversight for most municipal IT projects, procurements, and technology refresh for all municipal departments excluding AWWU.

Charge-Out Methodology: Allocation of cost pool is based on the ratio of current year budgeted labor costs for each recipient cost center to total current year budgeted labor costs for all recipient cost centers. Central service allocating departments are omitted and thus the cost that would be assigned to them is allocated to the direct service departments receiving this service.

Allocation Factor:

Month-end automated calculation



Municipality of Anchorage

Intragovernmental Charges Methodologies

Department: Information Technology

Contact: Linda Dotzler

Fund: 607000

Telephone: 343-6914

Cost Pool (Cost Center / Name): 148100 / Desktop Services

Services Provided: Provides desktop computer hardware and software, peripheral equipment support and installation, and help desk services.

Charge-Out Methodology: Allocation of cost pool is based on actual direct cost to provide desktop services to the Department of Health and Human Services, Library Department, and all other municipal departments, excluding Police, AWWU, and ML&P.

Allocation Factor:

Month-end automated calculation



Municipality of Anchorage

Intragovernmental Charges Methodologies

Department: Information Technology

Contact: Linda Dotzler

Fund: 607000

Telephone: 343-6914

Cost Pool (Cost Center / Name): 148200 / Network Services

Services Provided: Provides network systems support, communications system support and server systems support design and installation services.

Charge-Out Methodology: Allocation of cost pool is based on budgeted amount of labor and fixed costs such as servers and equipment split by work order count or area of assignment, with supplies split out 1/3 to each of the three service pools.

Allocation Factor:

Month-end automated calculation



Municipality of Anchorage

Intragovernmental Charges Methodologies

Department: Information Technology

Contact: Linda Dotzler

Fund: 607000

Telephone: 343-6914

Cost Pool (Cost Center / Name): 148271 / IGC Netwk Svcs Servers

Services Provided: Provides functionality for other programs, devices, or clients along with an environment that supports sharing data or resources among multiple clients, or performs computations for clients.

Charge-Out Methodology: Allocation of cost pool is based on the ratio of current year budgeted position counts for each recipient cost center to total current year budgeted position counts for all recipient cost centers after AWWU and ML&P are charged the percent of applications they access to all applications available for use muni-wide.

Allocation Factor:

Month-end automated calculation



Municipality of Anchorage

Intragovernmental Charges Methodologies

Department: Information Technology

Contact: Linda Dotzler

Fund: 607000

Telephone: 343-6914

Cost Pool (Cost Center / Name): 148272 / IGC Netwk Svcs Network

Services Provided: Provides network systems support, design, and installation services.

Charge-Out Methodology: Allocation of cost pool is based on ratio of total computers and printers for each recipient department to total computers and printers for all recipient departments.

Allocation Factor:

Month-end automated calculation



Municipality of Anchorage

Intragovernmental Charges Methodologies

Department: Information Technology

Contact: Linda Dotzler

Fund: 607000

Telephone: 343-6914

Cost Pool (Cost Center / Name): 148273 / IGC Netwk Svcs Phones

Services Provided: Provides communications system support.

Charge-Out Methodology: Allocation of cost pool is based on ratio of total number of telephone lines for each recipient department to total number of telephone lines for all recipient departments.

Allocation Factor:

Month-end automated calculation



Municipality of Anchorage

Intragovernmental Charges Methodologies

Department: Information Technology

Contact: Linda Dotzler

Fund: 607000

Telephone: 343-6914

Cost Pool (Cost Center / Name): 148300 / Technology Services

Services Provided: Provides mainframe hardware, software, and peripheral equipment support design and installation for usage of mainframe system.

Charge-Out Methodology: Allocation of cost pool is based on actual use of mainframe system sorted by department and employee ID. Background system processing is allocated on a ratio of the actual usage of mainframe to total Municipality wide usage of the mainframe.

Allocation Factor:

Month-end automated calculation



Municipality of Anchorage

Intragovernmental Charges Methodologies

Department: Information Technology

Contact: Linda Dotzler

Fund: 607000

Telephone: 343-6914

Cost Pool (Cost Center / Name): 149001 / CAMA Depreciation

Services Provided: Provides capital project recovery and operating support for the computer assisted mass appraisal (CAMA) project.

Charge-Out Methodology: 100% to the Property Appraisal, Areawide Service Area.

Allocation Factor:

Month-end automated calculation



Municipality of Anchorage

Intragovernmental Charges Methodologies

Department: Human Resources

Contact: Brayack, Patti A.

Fund: 101000

Telephone: 343-4516

Cost Pool (Cost Center / Name): 181000 / Human Resources Administration

Services Provided: Provides administrative support to the department divisions within the department.

Charge-Out Methodology: Allocation of cost pool is based on the ratio of current year budgeted labor costs for each recipient cost center to total current year budgeted labor costs for all recipient cost centers.

Allocation Factor:

Month-end automated calculation



Municipality of Anchorage

Intragovernmental Charges Methodologies

Department: Human Resources

Contact: Brayack, Patti A.

Fund: 101000

Telephone: 343-4516

Cost Pool (Cost Center / Name): 184100 / Labor Relations

Services Provided: Provides labor relations and negotiation services and oversees Municipal training.

Charge-Out Methodology: Allocation of cost pool is based on the ratio of current year budgeted labor costs for each recipient cost center to total current year budgeted labor costs for all recipient cost centers. Central service allocating departments are omitted and thus the cost that would be assigned to them is allocated to the direct service departments receiving this service.

Allocation Factor:

Month-end automated calculation



Municipality of Anchorage

Intragovernmental Charges Methodologies

Department: Employee Relations

Contact: Brayack, Patti A.

Fund: 101000

Telephone: 343-4516

Cost Pool (Cost Center / Name): 184500 / Employment

Services Provided: Provides employment recruitment and classification services, provides pay review, and manages employee records for all Municipal departments.

Charge-Out Methodology: Allocation of cost pool is based on the ratio of current year budgeted labor costs for each recipient cost center to total current year budgeted labor costs for all recipient cost centers. Central service allocating departments are omitted and thus the cost that would be assigned to them is allocated to the direct service departments receiving this service.

Allocation Factor:

Month-end automated calculation



Municipality of Anchorage

Intragovernmental Charges Methodologies

Department: Employee Relations

Contact: Brayack, Patti A.

Fund: 101000

Telephone: 343-4516

Cost Pool (Cost Center / Name): 187100 / Benefits

Services Provided: Develops, maintains, and administers cost effective and competitive employee benefit programs. Responsible for health and wellness and retirement benefit administration.

Charge-Out Methodology: Allocation of cost pool is based on the ratio of current year budgeted labor costs for each recipient cost center to total current year budgeted labor costs for all recipient cost centers. Central service allocating departments are omitted and thus the cost that would be assigned to them is allocated to the direct service departments receiving this service.

Allocation Factor:

Month-end automated calculation



Municipality of Anchorage

Intragovernmental Charges Methodologies

Department: Office of Economic & Community Development
Renee Stewart

Contact:

Fund: 101000

Telephone: 343-4481

Cost Pool (Cost Center / Name): 510500 / OECD Administration

Services Provided: Provides oversight of the following departments: Development Services, Library, Parks & Recreation, Planning, and Real Estate and also provides administration of major Municipal facilities and museum.

Charge-Out Methodology: Allocation of cost pool is based on estimated time spent on each cost center in the Office of Economic & Community Development and each municipal department that reports to the Office of Economic & Community Development.

Allocation Factor:
Month-end automated calculation



Municipality of Anchorage

Intragovernmental Charges Methodologies

Department: Office of Economic & Community Development
Miller

Contact: Tina

Fund: 101000

Telephone: 343-6183

Cost Pool (Cost Center / Name): 510600 / OECD Data & Analytics

Services Provided: Provides management of geographic information systems (GIS) data, information, and the associated analysis and metrics from the Geographic Data & Information Center (GDIC) managed by the Geographic Information Officer.

Charge-Out Methodology: Allocation of cost pool is based on current year budget categorized into GIS Licensing based on actual use and Baseline GIS Program based on budgeted employee counts. Department GIS support is currently managed through the GDIC vendor contracts or operational projects with direct department funding.

Allocation Factor:
Month-end automated calculation



Municipality of Anchorage

Intragovernmental Charges Methodologies

Department: Office of Economic & Community Development
Miller

Contact: Tina

Fund: 101000

Telephone: 343-6183

Cost Pool (Cost Center / Name): 510671 / IGC-OECD GIS Licensing

Services Provided:

Charge-Out Methodology:

Allocation Factor:



Municipality of Anchorage

Intragovernmental Charges Methodologies

Department: Office of Economic & Community Development
Miller

Contact: Tina

Fund: 101000

Telephone: 343-6183

Cost Pool (Cost Center / Name): 510672 / IGC-OECD GIS Enterprise Program

Services Provided:

Charge-Out Methodology:

Allocation Factor:



Municipality of Anchorage

Intragovernmental Charges Methodologies

Department: Office of Economic & Community Development
Miller

Contact: Tina

Fund: 101000

Telephone: 343-6183

Cost Pool (Cost Center / Name): 510673 / IGC-OECD GIS Dept Support

Services Provided:

Charge-Out Methodology:

Allocation Factor:



Municipality of Anchorage

Intragovernmental Charges Methodologies

Department: Office of Economic & Community Development

Contact: Brendan Babb

Fund: 101000

Telephone: 343-

Cost Pool (Cost Center / Name): 510800 / iTeam

Services Provided: .

Charge-Out Methodology: .

Allocation Factor:

Month-end automated calculation



Municipality of Anchorage

Intragovernmental Charges Methodologies

Department: Maintenance & Operations

Contact: Maury Robinson

Fund: 101000

Telephone: 343-8191

Cost Pool (Cost Center / Name): 710500 / Facility Maintenance

Services Provided: Provides municipal facility maintenance services, with scheduling and prioritizing done via work order system and by issue type.

Charge-Out Methodology: Allocation of cost pool is based on ratio of prior year cost of each facility cost pool to total prior year cost of all facility cost pools.

Allocation Factor:

Month-end automated calculation



Municipality of Anchorage

Intragovernmental Charges Methodologies

Department: Maintenance & Operations

Contact: Maury Robinson

Fund: 101000

Telephone: 343-8191

Cost Pool (Cost Center / Name): 710503 / Facilities Girdwood

Services Provided: Provides facility maintenance services for municipal facilities in the Girdwood Service Area. Scheduling and prioritizing done via work order system and by issue type.

Charge-Out Methodology: Allocation of cost pool is based on ratio of square footage use by department, to total square footage within this cost pool. Charged to all departments, including central service allocating departments that receive this service.

Allocation Factor:

Month-end automated calculation



Municipality of Anchorage

Intragovernmental Charges Methodologies

Department: Maintenance & Operations

Contact: Maury Robinson

Fund: 101000

Telephone: 343-8191

Cost Pool (Cost Center / Name): 710506 / Facilities Eagle River Town Center

Services Provided: Provides facility maintenance services for municipal facilities in Eagle River, primarily the Eagle River Town Center located at 12001 Business Boulevard, Eagle River, AK 99577. Scheduling and prioritizing done via work order system and by issue type.

Charge-Out Methodology: Allocation of cost pool is based on ratio of square footage use by department, to total square footage within this cost pool. Charged to all departments, including central service allocating departments that receive this service.

Allocation Factor:

Month-end automated calculation



Municipality of Anchorage

Intragovernmental Charges Methodologies

Department: Maintenance & Operations

Contact: Maury Robinson

Fund: 101000

Telephone: 343-8191

Cost Pool (Cost Center / Name): 710509 / Facilities Fire Stations

Services Provided: Provides facility maintenance services for municipal Fire Stations. Scheduling and prioritizing done via work order system and by issue type.

Charge-Out Methodology: Allocation of cost pool is based on ratio of square footage use by department, to total square footage within this cost pool. Charged to all departments, including central service allocating departments that receive this service.

Allocation Factor:

Month-end automated calculation



Municipality of Anchorage

Intragovernmental Charges Methodologies

Department: Maintenance & Operations

Contact: Maury Robinson

Fund: 101000

Telephone: 343-8191

Cost Pool (Cost Center / Name): 710512 / Facilities Libraries

Services Provided: Provides facility maintenance services for municipal libraries. Scheduling and prioritizing done via work order system and by issue type.

Charge-Out Methodology: Allocation of cost pool is based on ratio of square footage use by department, to total square footage within this cost pool. Charged to all departments, including central service allocating departments that receive this service.

Allocation Factor:

Month-end automated calculation



Municipality of Anchorage

Intragovernmental Charges Methodologies

Department: Maintenance & Operations

Contact: Maury Robinson

Fund: 101000

Telephone: 343-8191

Cost Pool (Cost Center / Name): 710515 / Facilities Fac Maint Whse

Services Provided: Provides facility maintenance services for miscellaneous municipal facilities primarily in the Areawide Service Area. Scheduling and prioritizing done via work order system and by issue type.

Charge-Out Methodology: Allocation of cost pool is based on ratio of square footage use by department, to total square footage within this cost pool. Charged to all departments, including central service allocating departments that receive this service.

Allocation Factor:

Month-end automated calculation



Municipality of Anchorage

Intragovernmental Charges Methodologies

Department: Maintenance & Operations

Contact: Maury Robinson

Fund: 101000

Telephone: 343-8191

Cost Pool (Cost Center / Name): 710518 / Facilities Traffic

Services Provided: Provides facility maintenance services for municipal facilities used by the Traffic Department. Scheduling and prioritizing done via work order system and by issue type.

Charge-Out Methodology: Allocation of cost pool is based on ratio of square footage use by department, to total square footage within this cost pool. Charged to all departments, including central service allocating departments that receive this service.

Allocation Factor:

Month-end automated calculation



Municipality of Anchorage

Intragovernmental Charges Methodologies

Department: Maintenance & Operations

Contact: Maury Robinson

Fund: 101000

Telephone: 343-8191

Cost Pool (Cost Center / Name): 710521 / Facilities RES/Historical Property

Services Provided: Provides facility maintenance services for municipal facilities used by the Real Estate Services (RES) / Historical Properties. Scheduling and prioritizing done via work order system and by issue type.

Charge-Out Methodology: Allocation of cost pool is based on ratio of square footage use by department, to total square footage within this cost pool. Charged to all departments, including central service allocating departments that receive this service.

Allocation Factor:

Month-end automated calculation



Municipality of Anchorage

Intragovernmental Charges Methodologies

Department: Maintenance & Operations

Contact: Maury Robinson

Fund: 101000

Telephone: 343-8191

Cost Pool (Cost Center / Name): 710524 / Facilities Areawide Parks & Rec

Services Provided: Provides facility maintenance services for municipal facilities primarily in the Parks & Recreation Service Area. Scheduling and prioritizing done via work order system and by issue type.

Charge-Out Methodology: Allocation of cost pool is based on ratio of square footage use by department, to total square footage within this cost pool. Charged to all departments, including central service allocating departments that receive this service.

Allocation Factor:

Month-end automated calculation



Municipality of Anchorage

Intragovernmental Charges Methodologies

Department: Maintenance & Operations

Contact: Maury Robinson

Fund: 101000

Telephone: 343-8191

Cost Pool (Cost Center / Name): 710527 / Facility Maintenance AHD Service

Services Provided: Provides facility maintenance services for municipal facilities used by the Anchorage Health Department within. Scheduling and prioritizing done via work order system and by issue type.

Charge-Out Methodology: Allocation of cost pool is based on ratio of square footage use by department, to total square footage within this cost pool. Charged to all departments, including central service allocating departments that receive this service.

Allocation Factor:

Month-end automated calculation



Municipality of Anchorage

Intragovernmental Charges Methodologies

Department: Maintenance & Operations

Contact: Maury Robinson

Fund: 101000

Telephone: 343-8191

Cost Pool (Cost Center / Name): 710530 / Facilities ARDSA

Services Provided: Provides facility maintenance services for municipal facilities within the Anchorage Roads & Drainage Service Area. Scheduling and prioritizing done via work order system and by issue type.

Charge-Out Methodology: Allocation of cost pool is based on ratio of square footage use by department, to total square footage within this cost pool. Charged to all departments, including central service allocating departments that receive this service.

Allocation Factor:

Month-end automated calculation



Municipality of Anchorage

Intragovernmental Charges Methodologies

Department: Maintenance & Operations

Contact: Maury Robinson

Fund: 101000

Telephone: 343-8191

Cost Pool (Cost Center / Name): 710533 / Facilities Transit/Centers/Park & Rides

Services Provided: Provides facility maintenance services for municipal facilities used for Public Transportation, including transit center and Park & Ride. Scheduling and prioritizing done via work order system and by issue type.

Charge-Out Methodology: Allocation of cost pool is based on ratio of square footage use by department, to total square footage within this cost pool. Charged to all departments, including central service allocating departments that receive this service.

Allocation Factor:

Month-end automated calculation



Municipality of Anchorage

Intragovernmental Charges Methodologies

Department: Maintenance & Operations

Contact: Maury Robinson

Fund: 101000

Telephone: 343-8191

Cost Pool (Cost Center / Name): 710536 / Facilities Fleet Maint

Services Provided: Provides facility maintenance services for municipal facilities used by Fleet Maintenance. Scheduling and prioritizing done via work order system and by issue type.

Charge-Out Methodology: Allocation of cost pool is based on ratio of square footage use by department, to total square footage within this cost pool. Charged to all departments, including central service allocating departments that receive this service.

Allocation Factor:

Month-end automated calculation



Municipality of Anchorage

Intragovernmental Charges Methodologies

Department: Maintenance & Operations

Contact: Maury Robinson

Fund: 101000

Telephone: 343-8191

Cost Pool (Cost Center / Name): 710539 / Facilities Police / Substations

Services Provided: Provides facility maintenance services for municipal facilities used primarily by the Police Department, including police substations. Scheduling and prioritizing done via work order system and by issue type.

Charge-Out Methodology: Allocation of cost pool is based on ratio of square footage use by department, to total square footage within this cost pool. Charged to all departments, including central service allocating departments that receive this service.

Allocation Factor:

Month-end automated calculation



Municipality of Anchorage

Intragovernmental Charges Methodologies

Department: Maintenance & Operations

Contact: Maury Robinson

Fund: 101000

Telephone: 343-8191

Cost Pool (Cost Center / Name): 710542 / Facilities Eagle River Parks & Rec

Services Provided: Provides facility maintenance services for municipal facilities used by the Eagle River Parks & Recreation Service Area. Scheduling and prioritizing done via work order system and by issue type.

Charge-Out Methodology: Allocation of cost pool is based on ratio of square footage use by department, to total square footage within this cost pool. Charged to all departments, including central service allocating departments that receive this service.

Allocation Factor:

Month-end automated calculation



Municipality of Anchorage

Intragovernmental Charges Methodologies

Department: Maintenance & Operations

Contact: Maury Robinson

Fund: 101000

Telephone: 343-8191

Cost Pool (Cost Center / Name): 710545 / Facilities City Hall

Services Provided: Provides facility maintenance services for municipal facilities in City Hall located at 632 West Sixth Avenue, Anchorage, AK 99501. Scheduling and prioritizing done via work order system and by issue type.

Charge-Out Methodology: Allocation of cost pool is based on ratio of square footage use by department, to total square footage within this cost pool. Charged to all departments, including central service allocating departments that receive this service.

Allocation Factor:

Month-end automated calculation



Municipality of Anchorage

Intragovernmental Charges Methodologies

Department: Maintenance & Operations

Contact: Maury Robinson

Fund: 101000

Telephone: 343-8191

Cost Pool (Cost Center / Name): 710548 / Facilities Eagle River Parks & Rec Chal

Services Provided: Provides facility maintenance services for the municipal facility Ski Chalet at Beach Lake in the Eagle River Parks & Recreation Service Area. Scheduling and prioritizing done via work order system and by issue type.

Charge-Out Methodology: Allocation of cost pool is based on ratio of square footage use by department, to total square footage within this cost pool. Charged to all departments, including central service allocating departments that receive this service.

Allocation Factor:

Month-end automated calculation



Municipality of Anchorage

Intragovernmental Charges Methodologies

Department: Maintenance & Operations

Contact: Maury Robinson

Fund: 101000

Telephone: 343-8191

Cost Pool (Cost Center / Name): 710551 / Facilities Eagle River Parks & Rec Pools

Services Provided: Provides facility maintenance services for the municipal facility Chugiak High School Pool in the Eagle River Parks & Recreation Service Area. Scheduling and prioritizing done via work order system and by issue type.

Charge-Out Methodology: Allocation of cost pool is based on ratio of square footage use by department, to total square footage within this cost pool. Charged to all departments, including central service allocating departments that receive this service.

Allocation Factor:

Month-end automated calculation



Municipality of Anchorage

Intragovernmental Charges Methodologies

Department: Maintenance & Operations

Contact: Maury Robinson

Fund: 101000

Telephone: 343-8191

Cost Pool (Cost Center / Name): 710554 / Facilities Areawide Parks & Rec Pools

Services Provided: Provides facility maintenance services for municipal pools in the Anchorage Parks & Recreation Service Area. Scheduling and prioritizing done via work order system and by issue type.

Charge-Out Methodology: Allocation of cost pool is based on ratio of square footage use by department, to total square footage within this cost pool. Charged to all departments, including central service allocating departments that receive this service.

Allocation Factor:

Month-end automated calculation



Municipality of Anchorage

Intragovernmental Charges Methodologies

Department: Maintenance & Operations

Contact: Maury Robinson

Fund: 101000

Telephone: 343-8191

Cost Pool (Cost Center / Name): 710557 / Facilities Heritage Land Bank

Services Provided: Provides facility maintenance services for municipal facilities in the Heritage Land Bank Service Area. Scheduling and prioritizing done via work order system and by issue type.

Charge-Out Methodology: Allocation of cost pool is based on ratio of square footage use by department, to total square footage within this cost pool. Charged to all departments, including central service allocating departments that receive this service.

Allocation Factor:

Month-end automated calculation



Municipality of Anchorage

Intragovernmental Charges Methodologies

Department: Maintenance & Operations

Contact: Maury Robinson

Fund: 101000

Telephone: 343-8191

Cost Pool (Cost Center / Name): 710560 / Facilities Chugiak Fire Service Area

Services Provided: Provides facility maintenance services for municipal facilities in the Chugiak Fire Service Area. Scheduling and prioritizing done via work order system and by issue type.

Charge-Out Methodology: Allocation of cost pool is based on ratio of square footage use by department, to total square footage within this cost pool. Charged to all departments, including central service allocating departments that receive this service.

Allocation Factor:

Month-end automated calculation



Municipality of Anchorage

Intragovernmental Charges Methodologies

Department: Maintenance & Operations

Contact: Maury Robinson

Fund: 101000

Telephone: 343-8191

Cost Pool (Cost Center / Name): 710562 / Facilities-CBERRRSA

Services Provided: Provides facility maintenance services for municipal facilities in the Chugiak Birchwood Eagle River Rural Road Service Area (CBERRRSA). Scheduling and prioritizing done via work order system and by issue type.

Charge-Out Methodology: Allocation of cost pool is based on ratio of square footage use by department, to total square footage within this cost pool. Charged to all departments, including central service allocating departments that receive this service.

Allocation Factor:

Month-end automated calculation



Municipality of Anchorage

Intragovernmental Charges Methodologies

Department: Maintenance & Operations

Contact: Maury Robinson

Fund: 101000

Telephone: 343-8191

Cost Pool (Cost Center / Name): 710563 / Facilities NC HJ Mac Mem Ctr

Services Provided: Provides facility maintenance services for the municipal sports facility Harry J. McDonald Memorial Center located at 13701 Harry McDonald Road, Eagle River, AK 99577. Scheduling and prioritizing done via work order system and by issue type. Does not receive allocation from the Facility Maintenance Administration pool.

Charge-Out Methodology: Allocation of cost pool is based on ratio of square footage use by department, to total square footage within this cost pool. Charged to all departments, including central service allocating departments that receive this service.

Allocation Factor:

Month-end automated calculation



Municipality of Anchorage

Intragovernmental Charges Methodologies

Department: Maintenance & Operations

Contact: Maury Robinson

Fund: 101000

Telephone: 343-8191

Cost Pool (Cost Center / Name): 710566 / Facilities NC Sullivan Arena

Services Provided: Provides facility maintenance services for the municipal entertainment facility Sullivan Arena located at 1600 Gambell Street, Anchorage, AK 99501. Scheduling and prioritizing done via work order system and by issue type. Does not receive allocation from the Facility Maintenance Administration pool.

Charge-Out Methodology: Allocation of cost pool is based on ratio of square footage use by department, to total square footage within this cost pool. Charged to all departments, including central service allocating departments that receive this service.

Allocation Factor:

Month-end automated calculation



Municipality of Anchorage

Intragovernmental Charges Methodologies

Department: Maintenance & Operations

Contact: Maury Robinson

Fund: 101000

Telephone: 343-8191

Cost Pool (Cost Center / Name): 710569 / Facilities NC Egan Center

Services Provided: Provides facility maintenance services for the municipal convention facility William A. Egan Civic & Convention Center located at 555 West Fifth Avenue, Anchorage, AK 99501. Scheduling and prioritizing done via work order system and by issue type. Does not receive allocation from the Facility Maintenance Administration pool.

Charge-Out Methodology: Allocation of cost pool is based on ratio of square footage use by department, to total square footage within this cost pool. Charged to all departments, including central service allocating departments that receive this service.

Allocation Factor:

Month-end automated calculation



Municipality of Anchorage

Intragovernmental Charges Methodologies

Department: Maintenance & Operations

Contact: Maury Robinson

Fund: 101000

Telephone: 343-8191

Cost Pool (Cost Center / Name): 710572 / Facilities NC Dena'ina Center

Services Provided: Provides facility maintenance services for the municipal convention facility Dena'ina Civic & Convention Center located at 600 West Seventh Avenue, Anchorage, AK 99501. Scheduling and prioritizing done via work order system and by issue type. Does not receive allocation from the Facility Maintenance Administration pool.

Charge-Out Methodology: Allocation of cost pool is based on ratio of square footage use by department, to total square footage within this cost pool. Charged to all departments, including central service allocating departments that receive this service.

Allocation Factor:

Month-end automated calculation



Municipality of Anchorage

Intragovernmental Charges Methodologies

Department: Maintenance & Operations

Contact: Maury Robinson

Fund: 101000

Telephone: 343-8191

Cost Pool (Cost Center / Name): 710575 / Facilities NC Performing Arts Center

Services Provided: Provides facility maintenance services for the municipal facility Alaska Center for the Performing Arts (PAC) located at 621 West Sixth Avenue, Anchorage, AK 99501. Scheduling and prioritizing done via work order system and by issue type. Does not receive allocation from the Facility Maintenance Administration pool.

Charge-Out Methodology: Allocation of cost pool is based on ratio of square footage use by department, to total square footage within this cost pool. Charged to all departments, including central service allocating departments that receive this service.

Allocation Factor:

Month-end automated calculation



Municipality of Anchorage

Intragovernmental Charges Methodologies

Department: Maintenance & Operations

Contact: Maury Robinson

Fund: 101000

Telephone: 343-8191

Cost Pool (Cost Center / Name): 710581 / Facilities NC Anchorage Museum

Services Provided: Provides facility maintenance services for the municipal Anchorage Museum located at 625 C Street, Anchorage, AK 99501. Scheduling and prioritizing done via work order system and by issue type. Does not receive allocation from the Facility Maintenance Administration pool.

Charge-Out Methodology: Allocation of cost pool is based on ratio of square footage use by department, to total square footage within this cost pool. Charged to all departments, including central service allocating departments that receive this service.

Allocation Factor:

Month-end automated calculation



Municipality of Anchorage

Intragovernmental Charges Methodologies

Department: Maintenance & Operations

Contact: Maury Robinson

Fund: 101000

Telephone: 343-8191

Cost Pool (Cost Center / Name): 710583 / Facilities Permit Center

Services Provided: Provides facility maintenance services for municipal facilities in the Anchorage Permit & Development Center located at 4700 Elmore Road, Anchorage, AK 99507. Scheduling and prioritizing done via work order system and by issue type.

Charge-Out Methodology: Allocation of cost pool is based on ratio of square footage use by department, to total square footage within this cost pool. Charged to all departments, including central service allocating departments that receive this service.

Allocation Factor:

Month-end automated calculation



Municipality of Anchorage

Intragovernmental Charges Methodologies

Department: Maintenance & Operations

Contact: Maury Robinson

Fund: 101000

Telephone: 343-8191

Cost Pool (Cost Center / Name): 710800 / Facility Capital Improvements

Services Provided: Provides project management, design, and construction services for municipal general government facility upgrades, improvements, and new construction.

Charge-Out Methodology: Allocation of cost pool is based on ratio of square footage for the department to total facility square footage municipality wide.

Allocation Factor:

Month-end automated calculation