

# Municipality of Anchorage

- Alaska –

**2022**

Public Transportation  
Department  
Indirect Cost Proposal



Dave Bronson  
Mayor

Cheryl Frasca  
Director, Office of Management & Budget

# Public Transportation Department

2022

## INDIRECT COST PROPOSAL

### Table of Contents

#### GENERAL INFORMATION

Certification of Indirect Costs.....	1
Introduction to Indirect Cost Proposal.....	2
Organizational Chart at 01/01/2020.....	3

#### INDIRECT COST RATE COMPUTATION

Public Transportation Department Rate.....	4
--	---

#### 2020 FINANCIAL INFORMATION

Summary of Billing Units (Including Adjustments).....	5
Detail of Direct Expenditures.....	6
Detail of IGC Expenditures (Direct and Indirect).....	13
Detail of Billings (IGC) and Program Revenues.....	15
Detail of Charges from Central Services Plan IGCs.....	16
Detail of Non-Allowable Expense Adj - Within Unit.....	17

#### INTRAGOVERNMENTAL CHARGE-OUT METHODOLOGIES

The Public Transportation department does not allocate out costs

### Certificate of Indirect Costs

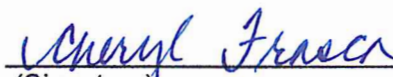
This is to certify that I have reviewed the indirect cost proposal submitted herewith and to the best of my knowledge and belief:


- (1) All costs included in this proposal to establish billing or final indirect cost rates for the period of January 1, 2022 through December 31, 2022 are allowable in accordance with the requirements of this Part and the Federal award(s) to which they apply.<sup>1</sup> Unallowable costs have been adjusted for in allocating costs as indicated in the cost allocation plan.
- (2) All costs included in this proposal are properly allocable to Federal awards on the basis of a beneficial or a causal relationship between the expenses incurred and the agreements to which they are allocated in accordance with applicable requirements. Further, the same costs that have been treated as indirect costs have not been claimed as direct costs. Similar types of costs have been accounted for consistently.

I declare the foregoing is true and correct

Municipality of Anchorage  
Anchorage, Alaska

Parrish, Blessing & Associates  
Anchorage, Alaska

  
(Signature)

  
(Signature)

Cheryl Frasca  
Director, Office of Management & Budget  
Date of Execution: 3/8/22

William J. Wilks  
Preparer  
Date of Execution: 3/8/22

---

<sup>1</sup> Office of Management and Budget, 2CFR Chapter 1 and Chapter 11, Parts 200, 215, 220, 225, and 230. Uniform Administration Requirements, Cost Principles, and Audit Requirements for Federal Awards.

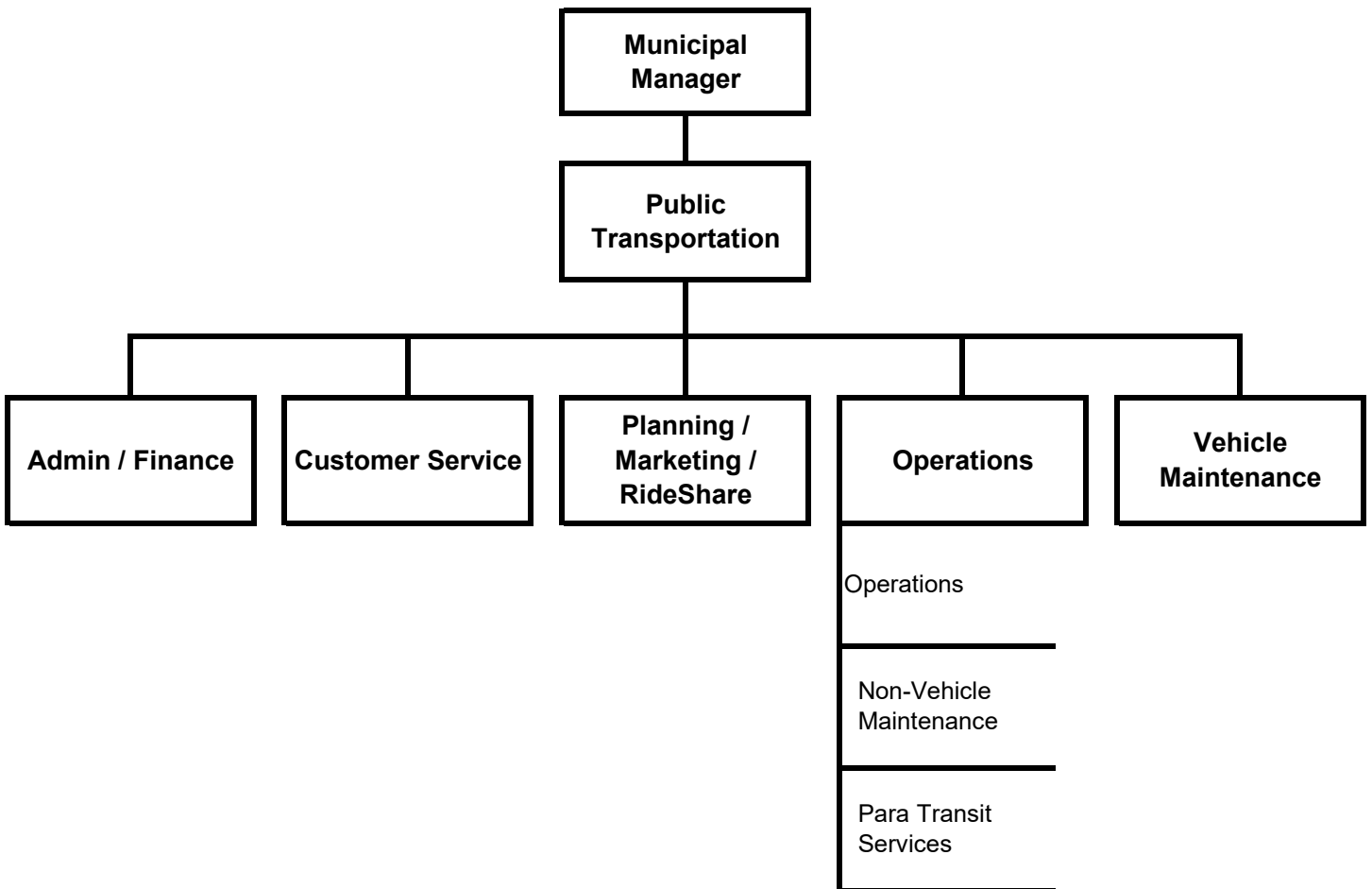
## **Introduction to Indirect Cost Rate Proposal**

This document presents the Indirect Cost Rate Proposal for the Municipality of Anchorage for the period January 1, 2022 through December 31, 2022. This proposal supports our department's claim to indirect costs on grants and contracts with Federal and State government agencies. Costs presented in this proposal are based on calendar year 2020 actual expenses and organizational structure.

One indirect cost rate is developed for each department that charges indirect costs to grants. This percentage of indirect costs is computed based on total direct costs for the department.

Costs included in the indirect cost rates include Intragovernmental Charges (IGCs) from department and division administrative units. Indirect costs also include a share of the allocated central service units' costs as identified in the Municipality of Anchorage's 2022 Central Services Cost Allocation Plan. In addition, IGCs from central service units, department and division charging units have been adjusted to subtract costs that are unallowable according to guidelines presented in the Circular FTA C 5010.1E and the Office of Management and Budget guidance on Administrative Requirements, Cost Principles, and Audit Requirements for Federal Awards released December 26, 2013.

# Public Transportation



## Indirect Cost Rate Computation



### Public Transportation Department

<u>Cost Item</u>	<u>Amount</u>
Actual Indirects	\$ 4,563,128
Allocation of Net Costs (over/underbilled costs) as Indirects from:	
None	-
<b>Total Indirects</b>	<u>\$ 4,563,128</u>
<b>Base (Allowable Net Directs)</b>	<u><u>\$ 30,946,272</u></u>
<b>2022 Rate</b>	14.7%



**Summary of Billing Units (Including Adjustments)  
Municipality of Anchorage  
Indirect Cost Rate Proposal  
Summary of Costs  
Using Results as of December 31, 2020**

**Public Transportation  
Department**

Fund	Cost Center	Description	IGC Expenditures		Total Direct and IGC Expenditures	Billings (IGC) and Program Revenues	Net Costs	Adjustment for Billings to Non Chargeout Units	Net Costs, After Adj	Non-Allowable Expense Adj			Allowable IGCs Treated as Indirect Costs (Actual Indirects)	Allowable Net Directs		
			Direct Expenditures	(Direct and Indirect)						Charges from Central Services Plan IGCs	% Not Allowable (from CSP)	From Central Services Plan			Within Unit	Allowable Net Costs, After Adj
101000	611000	Transit Administration	1,283,526	4,264,005	5,547,532	(41,022)	5,506,510	41,022	5,547,532	3,630,824	4.23%	153,450	652,995	4,741,087	3,962,185	778,902
101000	613000	Marketing & Customer Service	377,086	17,033	394,119	(374,088)	20,031	374,088	394,119	5,155	4.23%	218	-	393,901	4,937	388,964
101000	614000	Transit Planning	89,269	1,331	90,600	(73)	90,527	73	90,600	-	4.23%	-	13,027	77,573	-	77,573
101000	615000	Para Transit Services	3,540,704	11,670	3,552,374	(8)	3,552,366	8	3,552,374	-	4.23%	-	208,904	3,343,470	-	3,343,470
101000	622000	Transit Operations	13,117,005	719,173	13,836,178	(2,109,485)	11,726,694	2,109,485	13,836,178	108,804	4.23%	4,598	248,447	13,583,134	230,168	13,352,965
101000	630000	Vehicle Maintenance	4,969,626	151,031	5,120,657	(3,045,946)	2,074,711	3,045,946	5,120,657	-	4.23%	-	124,888	4,995,769	-	4,995,769
101000	640000	Non-Vehicle Maintenance	549,491	(75,103)	474,388	(4)	474,384	4	474,388	-	4.23%	-	115,298	359,091	-	359,091
231800	614000	Transit Planning	65,082	-	65,082	-	65,082	-	65,082	-	4.23%	-	-	65,082	-	65,082
231800	615000	Para Transit Services	67,407	2,749	70,156	(101,406)	(31,250)	101,406	70,156	-	4.23%	-	-	70,156	2,633	67,524
231801	124322	Disaster Recovery Public Transportat	(12,644)	84	(12,560)	-	(12,560)	-	(12,560)	-	4.23%	-	-	(12,560)	-	(12,560)
231900	613000	Marketing & Customer Service	810,710	15,668	826,378	(826,378)	-	826,378	826,378	1,313	4.23%	55	162,318	664,005	1,257	662,748
231900	614000	Transit Planning	230,871	12,419	243,290	(243,290)	-	243,290	243,290	-	4.23%	-	-	243,290	-	243,290
231900	615000	Para Transit Services	765,566	21,758	787,323	(787,323)	-	787,323	787,323	-	4.23%	-	-	787,323	20,838	766,485
241800	615000	Para Transit Services	49,299	21,213	70,512	(139,711)	(69,199)	139,711	70,512	-	4.23%	-	-	70,512	19,564	50,948
241800	622000	Transit Operations	-	99,436	99,436	(99,436)	-	99,436	99,436	-	4.23%	-	-	99,436	95,234	4,202
241800	630000	Vehicle Maintenance	16,329	70,893	87,222	423,965	511,187	(423,965)	87,222	-	4.23%	-	-	87,222	67,254	19,968
241800	640000	Non-Vehicle Maintenance	23,102	6,258	29,360	(29,360)	-	29,360	29,360	-	4.23%	-	-	29,360	5,133	24,227
241900	615000	Para Transit Services	79,865	3,146	83,011	(83,011)	-	83,011	83,011	-	4.23%	-	-	83,011	-	83,011
241900	622000	Transit Operations	1,440,607	59,701	1,500,308	(1,500,308)	-	1,500,308	1,500,308	-	4.23%	-	-	1,500,308	-	1,500,308
241900	630000	Vehicle Maintenance	132,318	2,980,094	3,112,413	(3,112,413)	-	3,112,413	3,112,413	-	4.23%	-	140	3,112,273	-	3,112,273
241900	640000	Non-Vehicle Maintenance	132,189	81,746	213,935	(213,935)	-	213,935	213,935	-	4.23%	-	-	213,935	-	213,935
261010	640000	Non-Vehicle Maintenance	21,593	-	21,593	-	21,593	-	21,593	-	4.23%	-	13,632	7,961	-	7,961
485100	614000	Transit Planning	3,692	-	3,692	(24,400)	24,400	-	3,692	-	4.23%	-	-	3,692	-	3,692
485100	615000	Para Transit Services	204,554	-	204,554	(148,201)	56,353	148,201	204,554	-	4.23%	-	204,554	-	-	
485100	630000	Vehicle Maintenance	71,082	-	71,082	(253,864)	(182,782)	253,864	71,082	-	4.23%	-	48,312	22,769	-	22,769
485100	640000	Non-Vehicle Maintenance	332,418	40,736	373,154	(175,345)	197,809	175,345	373,154	174	4.23%	7	281,225	91,921	38,381	53,541
485800	622000	Transit Operations	-	-	-	(119,924)	(119,924)	119,924	-	-	4.23%	-	-	-	-	-
485800	630000	Vehicle Maintenance	77,368	37,341	114,709	(37,341)	77,368	37,341	114,709	-	4.23%	-	-	114,709	35,763	78,946
485800	640000	Non-Vehicle Maintenance	3,796	83,374	87,171	(544,882)	(457,711)	544,882	87,171	-	4.23%	-	-	87,171	79,730	7,441
485900	614000	Transit Planning	-	-	-	108	108	(108)	-	-	4.23%	-	-	-	-	-
485900	615000	Para Transit Services	1,565,686	-	1,565,686	(1,584,920)	(19,235)	1,584,920	1,565,686	-	4.23%	-	1,555,106	10,580	-	10,580
485900	630000	Vehicle Maintenance	282,323	-	282,323	(134,206)	148,117	134,206	282,323	-	4.23%	-	-	69,736	212,587	212,587
485900	640000	Non-Vehicle Maintenance	773,429	3,901	777,330	(906,321)	(128,991)	906,321	777,330	54	4.23%	2	326,695	450,633	52	450,581
<b>Total Public Transportation Departme</b>			<b>31,063,350</b>	<b>8,629,659</b>	<b>39,693,009</b>	<b>(16,212,530)</b>	<b>23,480,479</b>	<b>16,212,530</b>	<b>39,693,009</b>	<b>3,746,324</b>		<b>158,331</b>	<b>4,025,278</b>	<b>35,509,400</b>	<b>4,563,128</b>	<b>30,946,272</b>

\* Cost Centers allocate within department. To avoid double counting, calculations were adjusted to exclude: "Adjustment for Billings to Non-Chargeout units"; "Allowable IGCs Treated as Indirect Costs (Actual Indirects)" and "Allowable Directs"

**ALLOCATIONS OF UNALLOWABLE COSTS FROM ADMIN UNITS**

to be included in recipient Division Rate Calculations, if different from sender division within this department, in the "Allocation of Net Costs (over/underbilled costs) as Indirects from:"

Sender Cost Center	Amount (Over)/Under Billed	2020 Distribution Percent	Recipient Department	Flow Thru
--------------------	----------------------------	---------------------------	----------------------	-----------

No cost centers allocate within department - Does not allocate

CSP Cat.	Department	Cost Center Description	Fiscal		Cost		Actuals
			Year	Fund	Center	Acct	
	Public Transportation	Transit Administration	2020	101000	611000	501010	412,526.47
	Public Transportation	Transit Administration	2020	101000	611000	501020	16,715.00
	Public Transportation	Transit Administration	2020	101000	611000	501040	24,837.05
	Public Transportation	Transit Administration	2020	101000	611000	501080	97,285.45
	Public Transportation	Transit Administration	2020	101000	611000	501090	219.89
	Public Transportation	Transit Administration	2020	101000	611000	501100	124,076.92
	Public Transportation	Transit Administration	2020	101000	611000	501105	33,975.38
	Public Transportation	Transit Administration	2020	101000	611000	501115	118.31
	Public Transportation	Transit Administration	2020	101000	611000	501130	896.53
	Public Transportation	Transit Administration	2020	101000	611000	501140	561.24
	Public Transportation	Transit Administration	2020	101000	611000	511000	(602.33)
	Public Transportation	Transit Administration	2020	101000	611000	511010	608.87
	Public Transportation	Transit Administration	2020	101000	611000	511090	1,381.00
	Public Transportation	Transit Administration	2020	101000	611000	520040	(246.00)
	Public Transportation	Transit Administration	2020	101000	611000	520060	255.06
	Public Transportation	Transit Administration	2020	101000	611000	520070	120.00
	Public Transportation	Transit Administration	2020	101000	611000	520080	648.00
	Public Transportation	Transit Administration	2020	101000	611000	530380	10,000.00
	Public Transportation	Transit Administration	2020	101000	611000	540040	848.00
	Public Transportation	Transit Administration	2020	101000	611000	540070	199.00
	Public Transportation	Transit Administration	2020	101000	611000	540170	417.28
	Public Transportation	Transit Administration	2020	101000	611000	540260	70.40
	Public Transportation	Transit Administration	2020	101000	611000	550010	1,740.25
	Public Transportation	Transit Administration	2020	101000	611000	550080	931.48
	Public Transportation	Transit Administration	2020	101000	611000	570250	56.32
	Public Transportation	Transit Administration	2020	101000	611000	580010	385,752.98
	Public Transportation	Transit Administration	2020	101000	611000	580020	166,801.54
	Public Transportation	Transit Administration	2020	101000	611000	580030	12.76
	Public Transportation	Transit Administration	2020	101000	611000	580140	3,319.34
	Public Transportation	Marketing & Customer Service	2020	101000	613000	501010	170,435.52
	Public Transportation	Marketing & Customer Service	2020	101000	613000	501020	824.42
	Public Transportation	Marketing & Customer Service	2020	101000	613000	501040	10,326.39
	Public Transportation	Marketing & Customer Service	2020	101000	613000	501080	39,389.67
	Public Transportation	Marketing & Customer Service	2020	101000	613000	501090	154.04
	Public Transportation	Marketing & Customer Service	2020	101000	613000	501100	86,555.07
	Public Transportation	Marketing & Customer Service	2020	101000	613000	501105	13,204.23
	Public Transportation	Marketing & Customer Service	2020	101000	613000	501115	84.55
	Public Transportation	Marketing & Customer Service	2020	101000	613000	501130	356.75
	Public Transportation	Marketing & Customer Service	2020	101000	613000	501140	245.86
	Public Transportation	Marketing & Customer Service	2020	101000	613000	511000	5,914.82
	Public Transportation	Marketing & Customer Service	2020	101000	613000	511010	51.00
	Public Transportation	Marketing & Customer Service	2020	101000	613000	511090	689.00
	Public Transportation	Marketing & Customer Service	2020	101000	613000	511130	20.55
	Public Transportation	Marketing & Customer Service	2020	101000	613000	520050	42.11
	Public Transportation	Marketing & Customer Service	2020	101000	613000	520070	264.00
	Public Transportation	Marketing & Customer Service	2020	101000	613000	530060	56.50
	Public Transportation	Marketing & Customer Service	2020	101000	613000	540160	5,200.00
	Public Transportation	Marketing & Customer Service	2020	101000	613000	540170	2,776.87
	Public Transportation	Marketing & Customer Service	2020	101000	613000	540200	14,355.00
	Public Transportation	Marketing & Customer Service	2020	101000	613000	540242	214.33
	Public Transportation	Marketing & Customer Service	2020	101000	613000	540280	24,772.00
	Public Transportation	Marketing & Customer Service	2020	101000	613000	550010	1,152.99
	Public Transportation	Transit Planning	2020	101000	614000	501010	12,992.65
	Public Transportation	Transit Planning	2020	101000	614000	501020	111.35
	Public Transportation	Transit Planning	2020	101000	614000	501040	6,867.97
	Public Transportation	Transit Planning	2020	101000	614000	501080	4,238.82
	Public Transportation	Transit Planning	2020	101000	614000	501090	10.13
	Public Transportation	Transit Planning	2020	101000	614000	501100	5,850.07
	Public Transportation	Transit Planning	2020	101000	614000	501105	1,452.07
	Public Transportation	Transit Planning	2020	101000	614000	501115	5.10
	Public Transportation	Transit Planning	2020	101000	614000	501130	39.96
	Public Transportation	Transit Planning	2020	101000	614000	501140	24.14



CSP Cat.	Department	Cost Center Description	Fiscal Year	Fund	Cost Center	Acct	Actuals
	Public Transportation	Transit Planning	2020	101000	614000	511000	235.37
	Public Transportation	Transit Planning	2020	101000	614000	511010	297.67
	Public Transportation	Transit Planning	2020	101000	614000	511040	9.49
	Public Transportation	Transit Planning	2020	101000	614000	530060	126.00
	Public Transportation	Transit Planning	2020	101000	614000	530380	22,274.95
	Public Transportation	Transit Planning	2020	101000	614000	540150	405.00
	Public Transportation	Transit Planning	2020	101000	614000	540170	4,642.89
	Public Transportation	Transit Planning	2020	101000	614000	540200	16,502.48
	Public Transportation	Transit Planning	2020	101000	614000	540610	193.29
	Public Transportation	Transit Planning	2020	101000	614000	550010	367.08
	Public Transportation	Transit Planning	2020	101000	614000	570220	12,566.00
	Public Transportation	Transit Planning	2020	101000	614000	570250	56.32
	Public Transportation	Para Transit Services	2020	101000	615000	501010	166,126.39
	Public Transportation	Para Transit Services	2020	101000	615000	501020	226.52
	Public Transportation	Para Transit Services	2020	101000	615000	501040	9,935.87
	Public Transportation	Para Transit Services	2020	101000	615000	501080	39,078.77
	Public Transportation	Para Transit Services	2020	101000	615000	501090	120.93
	Public Transportation	Para Transit Services	2020	101000	615000	501100	57,726.65
	Public Transportation	Para Transit Services	2020	101000	615000	501105	12,541.11
	Public Transportation	Para Transit Services	2020	101000	615000	501115	63.56
	Public Transportation	Para Transit Services	2020	101000	615000	501130	349.93
	Public Transportation	Para Transit Services	2020	101000	615000	501140	227.10
	Public Transportation	Para Transit Services	2020	101000	615000	511000	1,310.68
	Public Transportation	Para Transit Services	2020	101000	615000	511010	844.09
	Public Transportation	Para Transit Services	2020	101000	615000	511080	600.25
	Public Transportation	Para Transit Services	2020	101000	615000	511090	2,726.00
	Public Transportation	Para Transit Services	2020	101000	615000	511150	5,282.90
	Public Transportation	Para Transit Services	2020	101000	615000	511170	154,447.91
	Public Transportation	Para Transit Services	2020	101000	615000	511190	105.00
	Public Transportation	Para Transit Services	2020	101000	615000	511380	130.50
	Public Transportation	Para Transit Services	2020	101000	615000	530380	2,788,145.06
	Public Transportation	Para Transit Services	2020	101000	615000	540040	970.00
	Public Transportation	Para Transit Services	2020	101000	615000	540070	175.00
	Public Transportation	Para Transit Services	2020	101000	615000	540170	9,909.86
	Public Transportation	Para Transit Services	2020	101000	615000	540180	117.03
	Public Transportation	Para Transit Services	2020	101000	615000	540200	76,824.00
	Public Transportation	Para Transit Services	2020	101000	615000	550010	3,815.30
	Public Transportation	Para Transit Services	2020	101000	615000	570250	56.32
	Public Transportation	Para Transit Services	2020	101000	615000	580530	208,847.40
	Public Transportation	Transit Operations	2020	101000	622000	501010	5,800,676.48
	Public Transportation	Transit Operations	2020	101000	622000	501020	739,341.22
	Public Transportation	Transit Operations	2020	101000	622000	501040	674,178.37
	Public Transportation	Transit Operations	2020	101000	622000	501080	1,581,861.94
	Public Transportation	Transit Operations	2020	101000	622000	501090	4,552.44
	Public Transportation	Transit Operations	2020	101000	622000	501100	2,404,281.40
	Public Transportation	Transit Operations	2020	101000	622000	501105	545,964.32
	Public Transportation	Transit Operations	2020	101000	622000	501115	2,530.27
	Public Transportation	Transit Operations	2020	101000	622000	501130	14,394.13
	Public Transportation	Transit Operations	2020	101000	622000	501140	8,953.39
	Public Transportation	Transit Operations	2020	101000	622000	501240	97,717.70
	Public Transportation	Transit Operations	2020	101000	622000	511000	16,669.08
	Public Transportation	Transit Operations	2020	101000	622000	511010	3,238.50
	Public Transportation	Transit Operations	2020	101000	622000	511060	613.84
	Public Transportation	Transit Operations	2020	101000	622000	511140	15,627.50
	Public Transportation	Transit Operations	2020	101000	622000	511150	461.72
	Public Transportation	Transit Operations	2020	101000	622000	511170	741,647.92
	Public Transportation	Transit Operations	2020	101000	622000	511380	5,283.20
	Public Transportation	Transit Operations	2020	101000	622000	520080	60.00
	Public Transportation	Transit Operations	2020	101000	622000	530010	4,755.00
	Public Transportation	Transit Operations	2020	101000	622000	530020	34,037.08
	Public Transportation	Transit Operations	2020	101000	622000	530060	564.00
	Public Transportation	Transit Operations	2020	101000	622000	530120	450.00

CSP Cat.	Department	Cost Center Description	Fiscal Year	Fund	Cost Center	Acct	Actuals
	Public Transportation	Transit Operations	2020	101000	622000	530360	1,546.19
	Public Transportation	Transit Operations	2020	101000	622000	530377	5,251.83
	Public Transportation	Transit Operations	2020	101000	622000	530380	25,670.00
	Public Transportation	Transit Operations	2020	101000	622000	540010	6,551.59
	Public Transportation	Transit Operations	2020	101000	622000	540040	50.00
	Public Transportation	Transit Operations	2020	101000	622000	540160	15,100.79
	Public Transportation	Transit Operations	2020	101000	622000	540170	1,655.49
	Public Transportation	Transit Operations	2020	101000	622000	540180	1,392.94
	Public Transportation	Transit Operations	2020	101000	622000	540200	30,334.00
	Public Transportation	Transit Operations	2020	101000	622000	540271	13,270.72
	Public Transportation	Transit Operations	2020	101000	622000	540280	236.00
	Public Transportation	Transit Operations	2020	101000	622000	540420	573.49
	Public Transportation	Transit Operations	2020	101000	622000	540610	68.93
	Public Transportation	Transit Operations	2020	101000	622000	540640	59,500.00
	Public Transportation	Transit Operations	2020	101000	622000	550010	9,331.24
	Public Transportation	Transit Operations	2020	101000	622000	570210	495.36
	Public Transportation	Transit Operations	2020	101000	622000	570220	34,809.62
	Public Transportation	Transit Operations	2020	101000	622000	570250	56.32
	Public Transportation	Transit Operations	2020	101000	622000	580530	212,635.25
	Public Transportation	Transit Operations	2020	101000	622000	590210	616.00
	Public Transportation	Vehicle Maintenance	2020	101000	630000	501010	1,986,775.19
	Public Transportation	Vehicle Maintenance	2020	101000	630000	501020	81,045.49
	Public Transportation	Vehicle Maintenance	2020	101000	630000	501040	193,263.53
	Public Transportation	Vehicle Maintenance	2020	101000	630000	501080	492,911.51
	Public Transportation	Vehicle Maintenance	2020	101000	630000	501090	1,370.36
	Public Transportation	Vehicle Maintenance	2020	101000	630000	501100	699,982.26
	Public Transportation	Vehicle Maintenance	2020	101000	630000	501105	173,317.02
	Public Transportation	Vehicle Maintenance	2020	101000	630000	501115	746.21
	Public Transportation	Vehicle Maintenance	2020	101000	630000	501130	4,579.40
	Public Transportation	Vehicle Maintenance	2020	101000	630000	501140	3,004.53
	Public Transportation	Vehicle Maintenance	2020	101000	630000	501240	57,072.15
	Public Transportation	Vehicle Maintenance	2020	101000	630000	511000	72,558.57
	Public Transportation	Vehicle Maintenance	2020	101000	630000	511010	7,249.10
	Public Transportation	Vehicle Maintenance	2020	101000	630000	511050	782.99
	Public Transportation	Vehicle Maintenance	2020	101000	630000	511100	116.77
	Public Transportation	Vehicle Maintenance	2020	101000	630000	511150	769,204.25
	Public Transportation	Vehicle Maintenance	2020	101000	630000	511160	51,790.98
	Public Transportation	Vehicle Maintenance	2020	101000	630000	511170	1,236.31
	Public Transportation	Vehicle Maintenance	2020	101000	630000	511180	36,235.41
	Public Transportation	Vehicle Maintenance	2020	101000	630000	511200	14,314.18
	Public Transportation	Vehicle Maintenance	2020	101000	630000	511380	95,160.76
	Public Transportation	Vehicle Maintenance	2020	101000	630000	530010	3,085.00
	Public Transportation	Vehicle Maintenance	2020	101000	630000	530020	15,379.25
	Public Transportation	Vehicle Maintenance	2020	101000	630000	530060	506.75
	Public Transportation	Vehicle Maintenance	2020	101000	630000	530360	40,898.88
	Public Transportation	Vehicle Maintenance	2020	101000	630000	530380	11,652.50
	Public Transportation	Vehicle Maintenance	2020	101000	630000	540040	3,361.92
	Public Transportation	Vehicle Maintenance	2020	101000	630000	540050	10.00
	Public Transportation	Vehicle Maintenance	2020	101000	630000	540070	525.00
	Public Transportation	Vehicle Maintenance	2020	101000	630000	540150	268.85
	Public Transportation	Vehicle Maintenance	2020	101000	630000	540170	590.01
	Public Transportation	Vehicle Maintenance	2020	101000	630000	540180	4,261.60
	Public Transportation	Vehicle Maintenance	2020	101000	630000	540260	20,317.08
	Public Transportation	Vehicle Maintenance	2020	101000	630000	550010	1,433.16
	Public Transportation	Vehicle Maintenance	2020	101000	630000	570250	56.32
	Public Transportation	Vehicle Maintenance	2020	101000	630000	580530	124,563.00
	Public Transportation	Non-Vehicle Maintenance	2020	101000	640000	501010	83,988.04
	Public Transportation	Non-Vehicle Maintenance	2020	101000	640000	501020	754.72
	Public Transportation	Non-Vehicle Maintenance	2020	101000	640000	501040	10,490.53
	Public Transportation	Non-Vehicle Maintenance	2020	101000	640000	501080	20,106.15
	Public Transportation	Non-Vehicle Maintenance	2020	101000	640000	501090	94.77
	Public Transportation	Non-Vehicle Maintenance	2020	101000	640000	501100	54,511.25

CSP Cat.	Department	Cost Center Description	Fiscal Year	Fund	Cost Center	Acct	Actuals
	Public Transportation	Non-Vehicle Maintenance	2020	101000	640000	501105	6,979.46
	Public Transportation	Non-Vehicle Maintenance	2020	101000	640000	501115	51.48
	Public Transportation	Non-Vehicle Maintenance	2020	101000	640000	501130	186.64
	Public Transportation	Non-Vehicle Maintenance	2020	101000	640000	501140	120.42
	Public Transportation	Non-Vehicle Maintenance	2020	101000	640000	501240	236.45
	Public Transportation	Non-Vehicle Maintenance	2020	101000	640000	511000	16,506.52
	Public Transportation	Non-Vehicle Maintenance	2020	101000	640000	511010	2,600.78
	Public Transportation	Non-Vehicle Maintenance	2020	101000	640000	511150	449.85
	Public Transportation	Non-Vehicle Maintenance	2020	101000	640000	511200	5,199.08
	Public Transportation	Non-Vehicle Maintenance	2020	101000	640000	511380	2,708.42
	Public Transportation	Non-Vehicle Maintenance	2020	101000	640000	530010	380.00
	Public Transportation	Non-Vehicle Maintenance	2020	101000	640000	530060	26.00
	Public Transportation	Non-Vehicle Maintenance	2020	101000	640000	530360	138,401.94
	Public Transportation	Non-Vehicle Maintenance	2020	101000	640000	530380	25,027.52
	Public Transportation	Non-Vehicle Maintenance	2020	101000	640000	540040	1,885.00
	Public Transportation	Non-Vehicle Maintenance	2020	101000	640000	540150	9,656.44
	Public Transportation	Non-Vehicle Maintenance	2020	101000	640000	540170	245.48
	Public Transportation	Non-Vehicle Maintenance	2020	101000	640000	540180	252.24
	Public Transportation	Non-Vehicle Maintenance	2020	101000	640000	540300	716.80
	Public Transportation	Non-Vehicle Maintenance	2020	101000	640000	540470	9,891.00
	Public Transportation	Non-Vehicle Maintenance	2020	101000	640000	540590	10,316.53
	Public Transportation	Non-Vehicle Maintenance	2020	101000	640000	540610	41.35
	Public Transportation	Non-Vehicle Maintenance	2020	101000	640000	540640	2,629.92
	Public Transportation	Non-Vehicle Maintenance	2020	101000	640000	550080	45,091.49
	Public Transportation	Non-Vehicle Maintenance	2020	101000	640000	580530	95,324.72
	Public Transportation	Non-Vehicle Maintenance	2020	101000	640000	590200	4,620.00
	Public Transportation	Transit Planning	2020	231800	614000	501010	65,091.60
	Public Transportation	Transit Planning	2020	231800	614000	520070	(9.60)
	Public Transportation	Para Transit Services	2020	231800	615000	530380	67,407.40
	Public Transportation	Disaster Recovery Public Transp	2020	231801	124322	501010	1,256.64
	Public Transportation	Disaster Recovery Public Transp	2020	231801	124322	501080	276.46
	Public Transportation	Disaster Recovery Public Transp	2020	231801	124322	501090	0.66
	Public Transportation	Disaster Recovery Public Transp	2020	231801	124322	501100	372.55
	Public Transportation	Disaster Recovery Public Transp	2020	231801	124322	501105	94.76
	Public Transportation	Disaster Recovery Public Transp	2020	231801	124322	501130	2.51
	Public Transportation	Disaster Recovery Public Transp	2020	231801	124322	530360	(14,647.45)
	Public Transportation	Marketing & Customer Service	2020	231900	613000	501010	194,005.49
	Public Transportation	Marketing & Customer Service	2020	231900	613000	501020	1,537.46
	Public Transportation	Marketing & Customer Service	2020	231900	613000	501040	22,990.46
	Public Transportation	Marketing & Customer Service	2020	231900	613000	501080	45,054.86
	Public Transportation	Marketing & Customer Service	2020	231900	613000	501090	129.91
	Public Transportation	Marketing & Customer Service	2020	231900	613000	501100	73,811.28
	Public Transportation	Marketing & Customer Service	2020	231900	613000	501105	16,180.50
	Public Transportation	Marketing & Customer Service	2020	231900	613000	501115	71.77
	Public Transportation	Marketing & Customer Service	2020	231900	613000	501130	429.99
	Public Transportation	Marketing & Customer Service	2020	231900	613000	501140	278.19
	Public Transportation	Marketing & Customer Service	2020	231900	613000	501240	9.68
	Public Transportation	Marketing & Customer Service	2020	231900	613000	511000	5,002.52
	Public Transportation	Marketing & Customer Service	2020	231900	613000	511010	1,373.43
	Public Transportation	Marketing & Customer Service	2020	231900	613000	511040	371.95
	Public Transportation	Marketing & Customer Service	2020	231900	613000	511050	1,096.75
	Public Transportation	Marketing & Customer Service	2020	231900	613000	511310	1,128.00
	Public Transportation	Marketing & Customer Service	2020	231900	613000	520040	1,055.90
	Public Transportation	Marketing & Customer Service	2020	231900	613000	520060	2,723.67
	Public Transportation	Marketing & Customer Service	2020	231900	613000	520070	216.00
	Public Transportation	Marketing & Customer Service	2020	231900	613000	520080	1,390.00
	Public Transportation	Marketing & Customer Service	2020	231900	613000	530050	7,343.00
	Public Transportation	Marketing & Customer Service	2020	231900	613000	530380	259,008.63
	Public Transportation	Marketing & Customer Service	2020	231900	613000	540040	1,539.00
	Public Transportation	Marketing & Customer Service	2020	231900	613000	540050	1,888.00
	Public Transportation	Marketing & Customer Service	2020	231900	613000	540150	162,318.43
	Public Transportation	Marketing & Customer Service	2020	231900	613000	540160	4,890.72

CSP Cat.	Department	Cost Center Description	Fiscal		Cost		Actuals
			Year	Fund	Center	Acct	
	Public Transportation	Marketing & Customer Service	2020	231900	613000	540170	178.70
	Public Transportation	Marketing & Customer Service	2020	231900	613000	540180	1,023.84
	Public Transportation	Marketing & Customer Service	2020	231900	613000	540271	2,591.24
	Public Transportation	Marketing & Customer Service	2020	231900	613000	540280	1,071.00
	Public Transportation	Transit Planning	2020	231900	614000	501010	115,774.31
	Public Transportation	Transit Planning	2020	231900	614000	501020	1,933.95
	Public Transportation	Transit Planning	2020	231900	614000	501040	6,126.56
	Public Transportation	Transit Planning	2020	231900	614000	501080	41,477.83
	Public Transportation	Transit Planning	2020	231900	614000	501090	117.74
	Public Transportation	Transit Planning	2020	231900	614000	501100	50,616.10
	Public Transportation	Transit Planning	2020	231900	614000	501105	13,764.27
	Public Transportation	Transit Planning	2020	231900	614000	501115	65.98
	Public Transportation	Transit Planning	2020	231900	614000	501130	371.86
	Public Transportation	Transit Planning	2020	231900	614000	501140	260.54
	Public Transportation	Transit Planning	2020	231900	614000	520070	(38.40)
	Public Transportation	Transit Planning	2020	231900	614000	540050	400.00
	Public Transportation	Para Transit Services	2020	231900	615000	530380	765,565.80
	Public Transportation	Para Transit Services	2020	241800	615000	501010	11,383.69
	Public Transportation	Para Transit Services	2020	241800	615000	501020	93.16
	Public Transportation	Para Transit Services	2020	241800	615000	501040	683.62
	Public Transportation	Para Transit Services	2020	241800	615000	501080	2,666.55
	Public Transportation	Para Transit Services	2020	241800	615000	501090	10.43
	Public Transportation	Para Transit Services	2020	241800	615000	501100	4,026.84
	Public Transportation	Para Transit Services	2020	241800	615000	501105	903.98
	Public Transportation	Para Transit Services	2020	241800	615000	501115	6.00
	Public Transportation	Para Transit Services	2020	241800	615000	501130	23.60
	Public Transportation	Para Transit Services	2020	241800	615000	501140	17.05
	Public Transportation	Para Transit Services	2020	241800	615000	530360	29,483.72
	Public Transportation	Vehicle Maintenance	2020	241800	630000	501010	10,034.20
	Public Transportation	Vehicle Maintenance	2020	241800	630000	501080	2,429.88
	Public Transportation	Vehicle Maintenance	2020	241800	630000	501090	4.72
	Public Transportation	Vehicle Maintenance	2020	241800	630000	501100	2,790.65
	Public Transportation	Vehicle Maintenance	2020	241800	630000	501105	1,039.89
	Public Transportation	Vehicle Maintenance	2020	241800	630000	501115	2.38
	Public Transportation	Vehicle Maintenance	2020	241800	630000	501130	27.17
	Public Transportation	Non-Vehicle Maintenance	2020	241800	640000	501010	10,898.51
	Public Transportation	Non-Vehicle Maintenance	2020	241800	640000	501020	503.27
	Public Transportation	Non-Vehicle Maintenance	2020	241800	640000	501040	645.44
	Public Transportation	Non-Vehicle Maintenance	2020	241800	640000	501080	2,674.58
	Public Transportation	Non-Vehicle Maintenance	2020	241800	640000	501090	12.81
	Public Transportation	Non-Vehicle Maintenance	2020	241800	640000	501100	7,269.50
	Public Transportation	Non-Vehicle Maintenance	2020	241800	640000	501105	976.58
	Public Transportation	Non-Vehicle Maintenance	2020	241800	640000	501115	7.92
	Public Transportation	Non-Vehicle Maintenance	2020	241800	640000	501130	26.96
	Public Transportation	Non-Vehicle Maintenance	2020	241800	640000	501140	18.88
	Public Transportation	Non-Vehicle Maintenance	2020	241800	640000	501240	67.77
	Public Transportation	Para Transit Services	2020	241900	615000	501010	46,357.56
	Public Transportation	Para Transit Services	2020	241900	615000	501020	372.59
	Public Transportation	Para Transit Services	2020	241900	615000	501040	2,517.87
	Public Transportation	Para Transit Services	2020	241900	615000	501080	10,666.35
	Public Transportation	Para Transit Services	2020	241900	615000	501090	41.23
	Public Transportation	Para Transit Services	2020	241900	615000	501100	16,107.36
	Public Transportation	Para Transit Services	2020	241900	615000	501105	3,615.78
	Public Transportation	Para Transit Services	2020	241900	615000	501115	23.70
	Public Transportation	Para Transit Services	2020	241900	615000	501130	94.18
	Public Transportation	Para Transit Services	2020	241900	615000	501140	68.45
	Public Transportation	Transit Operations	2020	241900	622000	501010	892,164.31
	Public Transportation	Transit Operations	2020	241900	622000	501020	4,510.46
	Public Transportation	Transit Operations	2020	241900	622000	501080	198,411.05
	Public Transportation	Transit Operations	2020	241900	622000	501090	517.77
	Public Transportation	Transit Operations	2020	241900	622000	501100	270,508.30
	Public Transportation	Transit Operations	2020	241900	622000	501105	67,134.33

CSP Cat.	Department	Cost Center Description	Fiscal Year	Fund	Cost Center	Acct	Actuals
	Public Transportation	Transit Operations	2020	241900	622000	501115	222.38
	Public Transportation	Transit Operations	2020	241900	622000	501130	1,793.44
	Public Transportation	Transit Operations	2020	241900	622000	501140	766.84
	Public Transportation	Transit Operations	2020	241900	622000	501240	25.05
	Public Transportation	Transit Operations	2020	241900	622000	511000	4,270.32
	Public Transportation	Transit Operations	2020	241900	622000	511380	283.02
	Public Transportation	Vehicle Maintenance	2020	241900	630000	501010	40,136.82
	Public Transportation	Vehicle Maintenance	2020	241900	630000	501080	9,719.47
	Public Transportation	Vehicle Maintenance	2020	241900	630000	501090	18.86
	Public Transportation	Vehicle Maintenance	2020	241900	630000	501100	11,162.58
	Public Transportation	Vehicle Maintenance	2020	241900	630000	501105	4,159.57
	Public Transportation	Vehicle Maintenance	2020	241900	630000	501115	9.52
	Public Transportation	Vehicle Maintenance	2020	241900	630000	501130	108.76
	Public Transportation	Vehicle Maintenance	2020	241900	630000	511000	42,926.92
	Public Transportation	Vehicle Maintenance	2020	241900	630000	511030	199.96
	Public Transportation	Vehicle Maintenance	2020	241900	630000	511380	5,727.83
	Public Transportation	Vehicle Maintenance	2020	241900	630000	530360	18,008.00
	Public Transportation	Vehicle Maintenance	2020	241900	630000	540150	140.00
	Public Transportation	Non-Vehicle Maintenance	2020	241900	640000	501010	7,126.00
	Public Transportation	Non-Vehicle Maintenance	2020	241900	640000	501040	806.80
	Public Transportation	Non-Vehicle Maintenance	2020	241900	640000	501080	1,681.19
	Public Transportation	Non-Vehicle Maintenance	2020	241900	640000	501090	7.32
	Public Transportation	Non-Vehicle Maintenance	2020	241900	640000	501100	4,154.00
	Public Transportation	Non-Vehicle Maintenance	2020	241900	640000	501105	452.21
	Public Transportation	Non-Vehicle Maintenance	2020	241900	640000	501115	3.96
	Public Transportation	Non-Vehicle Maintenance	2020	241900	640000	501130	12.64
	Public Transportation	Non-Vehicle Maintenance	2020	241900	640000	501140	9.44
	Public Transportation	Non-Vehicle Maintenance	2020	241900	640000	530360	117,935.00
	Public Transportation	Non-Vehicle Maintenance	2020	261010	640000	530380	7,961.13
	Public Transportation	Non-Vehicle Maintenance	2020	261010	640000	570160	13,632.24
	Public Transportation	Transit Planning	2020	485100	614000	590210	3,691.73
	Public Transportation	Para Transit Services	2020	485100	615000	570190	204,554.00
	Public Transportation	Vehicle Maintenance	2020	485100	630000	511000	10,749.88
	Public Transportation	Vehicle Maintenance	2020	485100	630000	530380	3,828.00
	Public Transportation	Vehicle Maintenance	2020	485100	630000	570210	31,442.27
	Public Transportation	Vehicle Maintenance	2020	485100	630000	570230	15,965.21
	Public Transportation	Vehicle Maintenance	2020	485100	630000	580140	900.00
	Public Transportation	Vehicle Maintenance	2020	485100	630000	580530	5.00
	Public Transportation	Vehicle Maintenance	2020	485100	630000	590210	8,191.57
	Public Transportation	Non-Vehicle Maintenance	2020	485100	640000	501010	13,413.28
	Public Transportation	Non-Vehicle Maintenance	2020	485100	640000	501020	16.92
	Public Transportation	Non-Vehicle Maintenance	2020	485100	640000	501080	3,008.92
	Public Transportation	Non-Vehicle Maintenance	2020	485100	640000	501090	6.54
	Public Transportation	Non-Vehicle Maintenance	2020	485100	640000	501100	2,117.29
	Public Transportation	Non-Vehicle Maintenance	2020	485100	640000	501105	1,046.73
	Public Transportation	Non-Vehicle Maintenance	2020	485100	640000	501115	3.69
	Public Transportation	Non-Vehicle Maintenance	2020	485100	640000	501130	26.70
	Public Transportation	Non-Vehicle Maintenance	2020	485100	640000	501140	19.63
	Public Transportation	Non-Vehicle Maintenance	2020	485100	640000	530360	4,500.00
	Public Transportation	Non-Vehicle Maintenance	2020	485100	640000	530380	9,468.05
	Public Transportation	Non-Vehicle Maintenance	2020	485100	640000	540400	17,564.98
	Public Transportation	Non-Vehicle Maintenance	2020	485100	640000	570160	280,319.93
	Public Transportation	Non-Vehicle Maintenance	2020	485100	640000	580140	900.00
	Public Transportation	Non-Vehicle Maintenance	2020	485100	640000	580530	5.00
	Public Transportation	Vehicle Maintenance	2020	485800	630000	511180	77,368.02
	Public Transportation	Non-Vehicle Maintenance	2020	485800	640000	501010	2,209.40
	Public Transportation	Non-Vehicle Maintenance	2020	485800	640000	501020	254.29
	Public Transportation	Non-Vehicle Maintenance	2020	485800	640000	501080	568.32
	Public Transportation	Non-Vehicle Maintenance	2020	485800	640000	501090	1.26
	Public Transportation	Non-Vehicle Maintenance	2020	485800	640000	501100	264.30
	Public Transportation	Non-Vehicle Maintenance	2020	485800	640000	501105	197.62
	Public Transportation	Non-Vehicle Maintenance	2020	485800	640000	501115	0.99

CSP		Direct Expenditures			Public Transportation		
Cat.	Department	Cost Center Description	Fiscal Year	Fund	Cost Center	Acct	Actuals
	Public Transportation	Non-Vehicle Maintenance	2020	485800	640000	501130	4.93
	Public Transportation	Non-Vehicle Maintenance	2020	485800	640000	501140	5.21
	Public Transportation	Non-Vehicle Maintenance	2020	485800	640000	511000	290.00
	Public Transportation	Para Transit Services	2020	485900	615000	511000	2,480.00
	Public Transportation	Para Transit Services	2020	485900	615000	530380	8,100.00
	Public Transportation	Para Transit Services	2020	485900	615000	570190	1,485,967.80
	Public Transportation	Para Transit Services	2020	485900	615000	570210	52,240.03
	Public Transportation	Para Transit Services	2020	485900	615000	570220	16,897.92
	Public Transportation	Vehicle Maintenance	2020	485900	630000	511090	6,578.89
	Public Transportation	Vehicle Maintenance	2020	485900	630000	511150	16,668.01
	Public Transportation	Vehicle Maintenance	2020	485900	630000	511180	53,363.96
	Public Transportation	Vehicle Maintenance	2020	485900	630000	530360	41,839.24
	Public Transportation	Vehicle Maintenance	2020	485900	630000	570210	42,101.00
	Public Transportation	Vehicle Maintenance	2020	485900	630000	570230	27,635.35
	Public Transportation	Vehicle Maintenance	2020	485900	630000	590200	94,137.01
	Public Transportation	Non-Vehicle Maintenance	2020	485900	640000	501010	59,003.23
	Public Transportation	Non-Vehicle Maintenance	2020	485900	640000	501020	2,175.32
	Public Transportation	Non-Vehicle Maintenance	2020	485900	640000	501040	1,537.73
	Public Transportation	Non-Vehicle Maintenance	2020	485900	640000	501080	13,481.45
	Public Transportation	Non-Vehicle Maintenance	2020	485900	640000	501090	27.51
	Public Transportation	Non-Vehicle Maintenance	2020	485900	640000	501100	13,391.87
	Public Transportation	Non-Vehicle Maintenance	2020	485900	640000	501105	4,323.24
	Public Transportation	Non-Vehicle Maintenance	2020	485900	640000	501115	14.58
	Public Transportation	Non-Vehicle Maintenance	2020	485900	640000	501118	18.78
	Public Transportation	Non-Vehicle Maintenance	2020	485900	640000	501130	122.24
	Public Transportation	Non-Vehicle Maintenance	2020	485900	640000	501140	63.75
	Public Transportation	Non-Vehicle Maintenance	2020	485900	640000	501240	223.48
	Public Transportation	Non-Vehicle Maintenance	2020	485900	640000	511000	661.63
	Public Transportation	Non-Vehicle Maintenance	2020	485900	640000	511380	2,748.30
	Public Transportation	Non-Vehicle Maintenance	2020	485900	640000	530360	153,862.54
	Public Transportation	Non-Vehicle Maintenance	2020	485900	640000	530375	2,317.50
	Public Transportation	Non-Vehicle Maintenance	2020	485900	640000	530380	190,835.56
	Public Transportation	Non-Vehicle Maintenance	2020	485900	640000	570160	326,695.37
	Public Transportation	Non-Vehicle Maintenance	2020	485900	640000	590210	1,925.00
							<u>31,063,350.03</u>

CSP Cat.	Department	Cost Center Description	Fiscal		Cost		Actuals
			Year	Fund	Center	Acct	
	Public Transportation	Transit Administration	2020	101000	611000	600020	6,869.02
	Public Transportation	Transit Administration	2020	101000	611000	600030	27,130.37
	Public Transportation	Transit Administration	2020	101000	611000	600050	10,850.64
	Public Transportation	Transit Administration	2020	101000	611000	600060	35,599.23
	Public Transportation	Transit Administration	2020	101000	611000	600080	66,625.67
	Public Transportation	Transit Administration	2020	101000	611000	600090	60,852.56
	Public Transportation	Transit Administration	2020	101000	611000	600120	1,544.66
	Public Transportation	Transit Administration	2020	101000	611000	600140	3,138.76
	Public Transportation	Transit Administration	2020	101000	611000	600150	68,501.47
	Public Transportation	Transit Administration	2020	101000	611000	600160	30,425.94
	Public Transportation	Transit Administration	2020	101000	611000	600200	108,879.32
	Public Transportation	Transit Administration	2020	101000	611000	600220	23,470.49
	Public Transportation	Transit Administration	2020	101000	611000	600240	56,387.63
	Public Transportation	Transit Administration	2020	101000	611000	600250	4,630.01
	Public Transportation	Transit Administration	2020	101000	611000	600280	98,281.78
	Public Transportation	Transit Administration	2020	101000	611000	600290	169,575.30
	Public Transportation	Transit Administration	2020	101000	611000	600300	52,062.95
	Public Transportation	Transit Administration	2020	101000	611000	600320	38,630.74
	Public Transportation	Transit Administration	2020	101000	611000	600330	19,529.55
	Public Transportation	Transit Administration	2020	101000	611000	600360	107,674.93
	Public Transportation	Transit Administration	2020	101000	611000	600370	12,435.46
	Public Transportation	Transit Administration	2020	101000	611000	600540	191,517.78
	Public Transportation	Transit Administration	2020	101000	611000	600570	28,790.50
	Public Transportation	Transit Administration	2020	101000	611000	600580	113,117.33
	Public Transportation	Transit Administration	2020	101000	611000	600610	74,602.82
	Public Transportation	Transit Administration	2020	101000	611000	601110	1,938,575.07
	Public Transportation	Transit Administration	2020	101000	611000	601470	16,739.07
	Public Transportation	Transit Administration	2020	101000	611000	601580	89,864.59
	Public Transportation	Transit Administration	2020	101000	611000	601590	76,459.24
	Public Transportation	Transit Administration	2020	101000	611000	601600	34,752.25
	Public Transportation	Transit Administration	2020	101000	611000	601820	52,076.81
	Public Transportation	Transit Administration	2020	101000	611000	601840	15,621.50
	Public Transportation	Transit Administration	2020	101000	611000	601850	23,984.64
	Public Transportation	Transit Administration	2020	101000	611000	601880	175,527.12
	Public Transportation	Transit Administration	2020	101000	611000	601890	326,098.86
	Public Transportation	Transit Administration	2020	101000	611000	601900	11,950.97
	Public Transportation	Transit Administration	2020	101000	611000	601910	32,809.69
	Public Transportation	Transit Administration	2020	101000	611000	605023	28,495.20
	Public Transportation	Transit Administration	2020	101000	611000	605530	8,506.99
	Public Transportation	Transit Administration	2020	101000	611000	605540	21,418.42
	Public Transportation	Marketing & Customer Service	2020	101000	613000	600430	5,154.84
	Public Transportation	Marketing & Customer Service	2020	101000	613000	605530	3,379.53
	Public Transportation	Marketing & Customer Service	2020	101000	613000	605540	8,498.94
	Public Transportation	Transit Planning	2020	101000	614000	605530	378.85
	Public Transportation	Transit Planning	2020	101000	614000	605540	952.38
	Public Transportation	Para Transit Services	2020	101000	615000	605530	3,324.38
	Public Transportation	Para Transit Services	2020	101000	615000	605540	8,345.50
	Public Transportation	Transit Operations	2020	101000	622000	600420	7,156.13
	Public Transportation	Transit Operations	2020	101000	622000	600430	9,667.91
	Public Transportation	Transit Operations	2020	101000	622000	600890	91,980.00
	Public Transportation	Transit Operations	2020	101000	622000	601470	131,521.22
	Public Transportation	Transit Operations	2020	101000	622000	605530	136,088.57
	Public Transportation	Transit Operations	2020	101000	622000	605540	342,759.38
	Public Transportation	Vehicle Maintenance	2020	101000	630000	605530	42,940.46
	Public Transportation	Vehicle Maintenance	2020	101000	630000	605540	108,090.54
	Public Transportation	Non-Vehicle Maintenance	2020	101000	640000	605003	(81,323.00)
	Public Transportation	Non-Vehicle Maintenance	2020	101000	640000	605530	1,769.57
	Public Transportation	Non-Vehicle Maintenance	2020	101000	640000	605540	4,450.67
	Public Transportation	Para Transit Services	2020	231800	615000	615200	2,749.00
	Public Transportation	Disaster Recovery Public Transp	2020	231801	124322	605530	23.88
	Public Transportation	Disaster Recovery Public Transp	2020	231801	124322	605540	59.82
	Public Transportation	Marketing & Customer Service	2020	231900	613000	600230	1,312.50

CSP Cat.	Department	Cost Center Description	Fiscal		Cost		Actuals
			Year	Fund	Center	Acct	
	Public Transportation	Marketing & Customer Service	2020	231900	613000	605530	4,075.53
	Public Transportation	Marketing & Customer Service	2020	231900	613000	605540	10,280.09
	Public Transportation	Transit Planning	2020	231900	614000	605530	3,528.06
	Public Transportation	Transit Planning	2020	231900	614000	605540	8,891.40
	Public Transportation	Para Transit Services	2020	231900	615000	615200	21,757.50
	Public Transportation	Para Transit Services	2020	241800	615000	605530	222.50
	Public Transportation	Para Transit Services	2020	241800	615000	605540	563.84
	Public Transportation	Para Transit Services	2020	241800	615000	615200	20,427.00
	Public Transportation	Transit Operations	2020	241800	622000	615200	99,436.00
	Public Transportation	Vehicle Maintenance	2020	241800	630000	605530	252.18
	Public Transportation	Vehicle Maintenance	2020	241800	630000	605540	418.93
	Public Transportation	Vehicle Maintenance	2020	241800	630000	615200	70,222.00
	Public Transportation	Non-Vehicle Maintenance	2020	241800	640000	605530	256.13
	Public Transportation	Non-Vehicle Maintenance	2020	241800	640000	605540	641.65
	Public Transportation	Non-Vehicle Maintenance	2020	241800	640000	615200	5,360.00
	Public Transportation	Para Transit Services	2020	241900	615000	605530	890.05
	Public Transportation	Para Transit Services	2020	241900	615000	605540	2,255.51
	Public Transportation	Transit Operations	2020	241900	622000	605530	17,016.18
	Public Transportation	Transit Operations	2020	241900	622000	605540	42,684.39
	Public Transportation	Vehicle Maintenance	2020	241900	630000	605003	2,977,410.00
	Public Transportation	Vehicle Maintenance	2020	241900	630000	605530	1,008.69
	Public Transportation	Vehicle Maintenance	2020	241900	630000	605540	1,675.73
	Public Transportation	Non-Vehicle Maintenance	2020	241900	640000	605003	81,323.00
	Public Transportation	Non-Vehicle Maintenance	2020	241900	640000	605530	118.40
	Public Transportation	Non-Vehicle Maintenance	2020	241900	640000	605540	305.04
	Public Transportation	Non-Vehicle Maintenance	2020	485100	640000	600230	174.46
	Public Transportation	Non-Vehicle Maintenance	2020	485100	640000	605530	248.48
	Public Transportation	Non-Vehicle Maintenance	2020	485100	640000	605540	413.01
	Public Transportation	Non-Vehicle Maintenance	2020	485100	640000	615202	39,900.00
	Public Transportation	Vehicle Maintenance	2020	485800	630000	615202	37,341.00
	Public Transportation	Non-Vehicle Maintenance	2020	485800	640000	605530	47.24
	Public Transportation	Non-Vehicle Maintenance	2020	485800	640000	605540	79.13
	Public Transportation	Non-Vehicle Maintenance	2020	485800	640000	615202	83,248.00
	Public Transportation	Non-Vehicle Maintenance	2020	485900	640000	600230	54.18
	Public Transportation	Non-Vehicle Maintenance	2020	485900	640000	605530	1,155.96
	Public Transportation	Non-Vehicle Maintenance	2020	485900	640000	605540	2,691.00
							<u>8,629,658.66</u>



CSP Cat.	Department	Cost Center Description	Fiscal		Cost		Actuals
			Year	Fund	Center	Acct	
Public Transportation	Transit Administration	Transit Administration	2020	101000	611000	405120	(1,043.65)
Public Transportation	Transit Administration	Transit Administration	2020	101000	611000	408380	(6.57)
Public Transportation	Transit Administration	Transit Administration	2020	101000	611000	450010	(10.00)
Public Transportation	Transit Administration	Transit Administration	2020	101000	611000	460030	(39,961.45)
Public Transportation	Marketing & Customer Service	Marketing & Customer Service	2020	101000	613000	406110	(283.00)
Public Transportation	Marketing & Customer Service	Marketing & Customer Service	2020	101000	613000	406220	(371,073.59)
Public Transportation	Marketing & Customer Service	Marketing & Customer Service	2020	101000	613000	408380	(26.07)
Public Transportation	Marketing & Customer Service	Marketing & Customer Service	2020	101000	613000	408550	(197.55)
Public Transportation	Marketing & Customer Service	Marketing & Customer Service	2020	101000	613000	408580	(2,508.00)
Public Transportation	Transit Planning	Transit Planning	2020	101000	614000	408380	(73.34)
Public Transportation	Para Transit Services	Para Transit Services	2020	101000	615000	408380	(8.39)
Public Transportation	Transit Operations	Transit Operations	2020	101000	622000	406250	(981,956.01)
Public Transportation	Transit Operations	Transit Operations	2020	101000	622000	406260	(942,934.44)
Public Transportation	Transit Operations	Transit Operations	2020	101000	622000	408380	(634.67)
Public Transportation	Transit Operations	Transit Operations	2020	101000	622000	408550	20.50
Public Transportation	Transit Operations	Transit Operations	2020	101000	622000	460070	(58,990.00)
Public Transportation	Transit Operations	Transit Operations	2020	101000	622000	600860	(124,990.08)
Public Transportation	Vehicle Maintenance	Vehicle Maintenance	2020	101000	630000	406625	(1,514.50)
Public Transportation	Vehicle Maintenance	Vehicle Maintenance	2020	101000	630000	408380	(117.31)
Public Transportation	Vehicle Maintenance	Vehicle Maintenance	2020	101000	630000	408390	(66,904.39)
Public Transportation	Vehicle Maintenance	Vehicle Maintenance	2020	101000	630000	605003	(2,977,410.00)
Public Transportation	Non-Vehicle Maintenance	Non-Vehicle Maintenance	2020	101000	640000	408380	(4.12)
Public Transportation	Para Transit Services	Para Transit Services	2020	231800	615000	450010	(101,406.40)
Public Transportation	Marketing & Customer Service	Marketing & Customer Service	2020	231900	613000	405010	(74,621.98)
Public Transportation	Marketing & Customer Service	Marketing & Customer Service	2020	231900	613000	405150	(751,756.51)
Public Transportation	Transit Planning	Transit Planning	2020	231900	614000	405150	(243,290.20)
Public Transportation	Para Transit Services	Para Transit Services	2020	231900	615000	405010	(278,663.84)
Public Transportation	Para Transit Services	Para Transit Services	2020	231900	615000	405150	(508,659.46)
Public Transportation	Para Transit Services	Para Transit Services	2020	241800	615000	450010	(139,710.72)
Public Transportation	Transit Operations	Transit Operations	2020	241800	622000	450010	(99,436.00)
Public Transportation	Vehicle Maintenance	Vehicle Maintenance	2020	241800	630000	450010	423,965.00
Public Transportation	Non-Vehicle Maintenance	Non-Vehicle Maintenance	2020	241800	640000	450010	(29,360.00)
Public Transportation	Para Transit Services	Para Transit Services	2020	241900	615000	405100	(83,010.63)
Public Transportation	Transit Operations	Transit Operations	2020	241900	622000	405100	(1,500,307.84)
Public Transportation	Vehicle Maintenance	Vehicle Maintenance	2020	241900	630000	405100	(3,112,412.71)
Public Transportation	Non-Vehicle Maintenance	Non-Vehicle Maintenance	2020	241900	640000	405100	(213,935.00)
Public Transportation	Transit Planning	Transit Planning	2020	485100	614000	460010	(24,400.00)
Public Transportation	Para Transit Services	Para Transit Services	2020	485100	615000	460010	(106,201.00)
Public Transportation	Para Transit Services	Para Transit Services	2020	485100	615000	460030	(42,000.00)
Public Transportation	Vehicle Maintenance	Vehicle Maintenance	2020	485100	630000	460010	(250,959.00)
Public Transportation	Vehicle Maintenance	Vehicle Maintenance	2020	485100	630000	460030	(2,905.00)
Public Transportation	Non-Vehicle Maintenance	Non-Vehicle Maintenance	2020	485100	640000	460010	(134,440.00)
Public Transportation	Non-Vehicle Maintenance	Non-Vehicle Maintenance	2020	485100	640000	460030	(40,905.00)
Public Transportation	Transit Operations	Transit Operations	2020	485800	622000	450010	(113,199.25)
Public Transportation	Transit Operations	Transit Operations	2020	485800	622000	460070	(6,725.00)
Public Transportation	Vehicle Maintenance	Vehicle Maintenance	2020	485800	630000	450010	(37,341.00)
Public Transportation	Non-Vehicle Maintenance	Non-Vehicle Maintenance	2020	485800	640000	450010	(544,882.00)
Public Transportation	Transit Planning	Transit Planning	2020	485900	614000	405100	108.26
Public Transportation	Para Transit Services	Para Transit Services	2020	485900	615000	405100	(1,584,920.49)
Public Transportation	Vehicle Maintenance	Vehicle Maintenance	2020	485900	630000	405100	(134,206.14)
Public Transportation	Non-Vehicle Maintenance	Non-Vehicle Maintenance	2020	485900	640000	405010	(24,822.48)
Public Transportation	Non-Vehicle Maintenance	Non-Vehicle Maintenance	2020	485900	640000	405100	(881,498.58)
							<u>(16,212,529.60)</u>

CSP Cat.	Department	Cost Center Description	Fiscal		Cost		Actuals
			Year	Fund	Center	Acct	
	Public Transportation	Transit Administration	2020	101000	611000	600020	6,869.02
	Public Transportation	Transit Administration	2020	101000	611000	600030	27,130.37
	Public Transportation	Transit Administration	2020	101000	611000	600050	10,850.64
	Public Transportation	Transit Administration	2020	101000	611000	600060	35,599.23
	Public Transportation	Transit Administration	2020	101000	611000	600090	60,852.56
	Public Transportation	Transit Administration	2020	101000	611000	600120	1,544.66
	Public Transportation	Transit Administration	2020	101000	611000	600140	3,138.76
	Public Transportation	Transit Administration	2020	101000	611000	600150	68,501.47
	Public Transportation	Transit Administration	2020	101000	611000	600200	108,879.32
	Public Transportation	Transit Administration	2020	101000	611000	600220	23,470.49
	Public Transportation	Transit Administration	2020	101000	611000	600240	56,387.63
	Public Transportation	Transit Administration	2020	101000	611000	600250	4,630.01
	Public Transportation	Transit Administration	2020	101000	611000	600280	98,281.78
	Public Transportation	Transit Administration	2020	101000	611000	600290	169,575.30
	Public Transportation	Transit Administration	2020	101000	611000	600300	52,062.95
	Public Transportation	Transit Administration	2020	101000	611000	600320	38,630.74
	Public Transportation	Transit Administration	2020	101000	611000	600330	19,529.55
	Public Transportation	Transit Administration	2020	101000	611000	600360	107,674.93
	Public Transportation	Transit Administration	2020	101000	611000	600370	12,435.46
	Public Transportation	Transit Administration	2020	101000	611000	600540	191,517.78
	Public Transportation	Transit Administration	2020	101000	611000	600570	28,790.50
	Public Transportation	Transit Administration	2020	101000	611000	600580	113,117.33
	Public Transportation	Transit Administration	2020	101000	611000	600610	74,602.82
	Public Transportation	Transit Administration	2020	101000	611000	601110	1,938,575.07
	Public Transportation	Transit Administration	2020	101000	611000	601820	52,076.81
	Public Transportation	Transit Administration	2020	101000	611000	601890	326,098.86
	Public Transportation	Marketing & Customer Service	2020	101000	613000	600430	5,154.84
	Public Transportation	Transit Operations	2020	101000	622000	600420	7,156.13
	Public Transportation	Transit Operations	2020	101000	622000	600430	9,667.91
	Public Transportation	Transit Operations	2020	101000	622000	600890	91,980.00
	Public Transportation	Marketing & Customer Service	2020	231900	613000	600230	1,312.50
	Public Transportation	Non-Vehicle Maintenance	2020	485100	640000	600230	174.46
	Public Transportation	Non-Vehicle Maintenance	2020	485900	640000	600230	54.18
							3,746,324.06

CSP Cat.	Department	Cost Center Description	Fiscal		Cost		Actuals
			Year	Fund	Center	Acct	
	Public Transportation	Transit Administration	2020	101000	611000	570250	56.32
	Public Transportation	Transit Administration	2020	101000	611000	580010	385,752.98
	Public Transportation	Transit Administration	2020	101000	611000	580020	166,801.54
	Public Transportation	Transit Administration	2020	101000	611000	580030	12.76
	Public Transportation	Transit Administration	2020	101000	611000	580140	3,319.34
	Public Transportation	Transit Administration	2020	101000	611000	600080	66,625.67
	Public Transportation	Transit Administration	2020	101000	611000	600160	30,425.94
	Public Transportation	Transit Planning	2020	101000	614000	540150	405.00
	Public Transportation	Transit Planning	2020	101000	614000	570220	12,566.00
	Public Transportation	Transit Planning	2020	101000	614000	570250	56.32
	Public Transportation	Para Transit Services	2020	101000	615000	570250	56.32
	Public Transportation	Para Transit Services	2020	101000	615000	580530	208,847.40
	Public Transportation	Transit Operations	2020	101000	622000	530120	450.00
	Public Transportation	Transit Operations	2020	101000	622000	570210	495.36
	Public Transportation	Transit Operations	2020	101000	622000	570220	34,809.62
	Public Transportation	Transit Operations	2020	101000	622000	570250	56.32
	Public Transportation	Transit Operations	2020	101000	622000	580530	212,635.25
	Public Transportation	Vehicle Maintenance	2020	101000	630000	540150	268.85
	Public Transportation	Vehicle Maintenance	2020	101000	630000	570250	56.32
	Public Transportation	Vehicle Maintenance	2020	101000	630000	580530	124,563.00
	Public Transportation	Non-Vehicle Maintenance	2020	101000	640000	540150	9,656.44
	Public Transportation	Non-Vehicle Maintenance	2020	101000	640000	540590	10,316.53
	Public Transportation	Non-Vehicle Maintenance	2020	101000	640000	580530	95,324.72
	Public Transportation	Marketing & Customer Service	2020	231900	613000	540150	162,318.43
	Public Transportation	Vehicle Maintenance	2020	241900	630000	540150	140.00
	Public Transportation	Non-Vehicle Maintenance	2020	261010	640000	570160	13,632.24
	Public Transportation	Para Transit Services	2020	485100	615000	570190	204,554.00
	Public Transportation	Vehicle Maintenance	2020	485100	630000	570210	31,442.27
	Public Transportation	Vehicle Maintenance	2020	485100	630000	570230	15,965.21
	Public Transportation	Vehicle Maintenance	2020	485100	630000	580140	900.00
	Public Transportation	Vehicle Maintenance	2020	485100	630000	580530	5.00
	Public Transportation	Non-Vehicle Maintenance	2020	485100	640000	570160	280,319.93
	Public Transportation	Non-Vehicle Maintenance	2020	485100	640000	580140	900.00
	Public Transportation	Non-Vehicle Maintenance	2020	485100	640000	580530	5.00
	Public Transportation	Para Transit Services	2020	485900	615000	570190	1,485,967.80
	Public Transportation	Para Transit Services	2020	485900	615000	570210	52,240.03
	Public Transportation	Para Transit Services	2020	485900	615000	570220	16,897.92
	Public Transportation	Vehicle Maintenance	2020	485900	630000	570210	42,101.00
	Public Transportation	Vehicle Maintenance	2020	485900	630000	570230	27,635.35
	Public Transportation	Non-Vehicle Maintenance	2020	485900	640000	570160	326,695.37
							<u>4,025,277.55</u>