

# Municipality of Anchorage

- Alaska –

**2022**

Planning  
Department  
Indirect Cost Proposal



Dave Bronson  
Mayor

Cheryl Frasca  
Director, Office of Management & Budget

**Planning Department**  
**2022**  
**INDIRECT COST PROPOSAL**

**Table of Contents**

**GENERAL INFORMATION**

Certification of Indirect Costs.....	1
Introduction to Indirect Cost Proposal.....	2
Organizational Chart at 01/01/2020.....	3

**INDIRECT COST RATE COMPUTATION**

Planning Department Rate.....	4
-------------------------------	---

**2020 FINANCIAL INFORMATION**

Summary of Billing Units (Including Adjustments).....	5
Detail of Direct Expenditures.....	6
Detail of IGC Expenditures (Direct and Indirect).....	9
Detail of Billings (IGC) and Program Revenues.....	11
Detail of Charges from Central Services Plan IGCs.....	12
Detail of Non-Allowable Expense Adj - Within Unit.....	13

**INTRAGOVERNMENTAL CHARGE-OUT METHODOLOGIES**

190000 Planning Administration.....	14
-------------------------------------	----

### Certificate of Indirect Costs

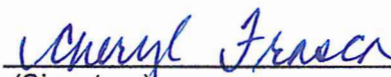
This is to certify that I have reviewed the indirect cost proposal submitted herewith and to the best of my knowledge and belief:


- (1) All costs included in this proposal to establish billing or final indirect cost rates for the period of January 1, 2022 through December 31, 2022 are allowable in accordance with the requirements of this Part and the Federal award(s) to which they apply.<sup>1</sup> Unallowable costs have been adjusted for in allocating costs as indicated in the cost allocation plan.
- (2) All costs included in this proposal are properly allocable to Federal awards on the basis of a beneficial or a causal relationship between the expenses incurred and the agreements to which they are allocated in accordance with applicable requirements. Further, the same costs that have been treated as indirect costs have not been claimed as direct costs. Similar types of costs have been accounted for consistently.

I declare the foregoing is true and correct

Municipality of Anchorage  
Anchorage, Alaska

Parrish, Blessing & Associates  
Anchorage, Alaska

  
(Signature)

  
(Signature)

Cheryl Frasca  
Director, Office of Management & Budget  
Date of Execution: 3/8/22

William J. Wilks  
Preparer  
Date of Execution: 3/8/22

<sup>1</sup> Office of Management and Budget, 2CFR Chapter 1 and Chapter 11, Parts 200, 215, 220, 225, and 230. Uniform Administration Requirements, Cost Principles, and Audit Requirements for Federal Awards.

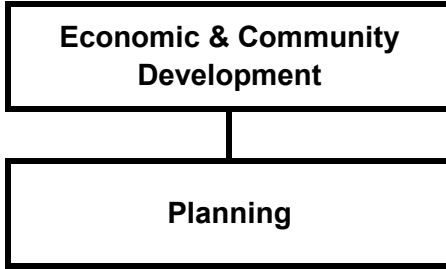
## Introduction to Indirect Cost Rate Proposal

This document presents the Indirect Cost Rate Proposal for the Municipality of Anchorage for the period January 1, 2022 through December 31, 2022. This proposal supports our department's claim to indirect costs on grants and contracts with Federal and State government agencies. Costs presented in this proposal are based on calendar year 2020 actual expenses and organizational structure.

One indirect cost rate is developed for each department that charges indirect costs to grants. This percentage of indirect costs is computed based on total direct costs for the department.

Costs included in the indirect cost rates include Intragovernmental Charges (IGCs) from department and division administrative units. Indirect costs also include a share of the allocated central service units' costs as identified in the Municipality of Anchorage's 2022 Central Services Cost Allocation Plan. In addition, IGCs from central service units, department and division charging units have been adjusted to subtract costs that are unallowable according to guidelines presented in the Circular FTA C 5010.1E and the Office of Management and Budget guidance on Administrative Requirements, Cost Principles, and Audit Requirements for Federal Awards released December 26, 2013.

# Planning



## Indirect Cost Rate Computation



**Planning  
Department**

<b>Cost Item</b>	<b>Amount</b>
Actual Indirects	\$ 1,981,707
Allocation of Net Costs (over/underbilled costs) as Indirects from:	
Development Services	(16,068)
<b>Total Indirects</b>	<b>\$ 1,965,639</b>
<b>Base (Allowable Net Directs)</b>	<b>\$ 4,476,871</b>
<b>2022 Rate</b>	<b>43.9%</b>



**Summary of Billing Units (Including Adjustments)  
Municipality of Anchorage  
Indirect Cost Rate Proposal  
Summary of Costs  
Using Results as of December 31, 2020**

**Planning  
Department**

Fund	Cost Center	Description	Direct Expenditures	IGC Expenditures (Direct and Indirect)	Total Direct and IGC Expenditures	Billings (IGC) and Program Revenues	Net Costs	Adjustment for Billings to Non Chargeout Units	Net Costs, After Adj	Non-Allowable Expense Adj			Allowable Net Costs, After Adj	Allowable IGCs Treated as Indirect Costs (Actual Indirects)	Allowable Net Directs
										Charges from Central Services Plan IGCs	% Not Allowable (from CSP)	From Central Services Plan Within Unit			
101000	190000	* Planning Administration	352,726	1,212,851	1,565,576	(1,565,576)	-	-	-	758,070	4.23%	32,038	136,748	(168,786)	-
101000	190200	Physical Planning	827,819	585,932	1,413,751	(1,909)	1,411,842	1,909	1,413,751	372,690	4.23%	15,751	4,798	1,393,203	857,276
101000	190300	Zoning & Platting	1,913,757	1,254,724	3,168,481	(701,584)	2,466,897	701,584	3,168,481	1,066,059	4.23%	45,055	17,787	3,105,639	1,961,935
101000	192060	Land Use Plan Review	349,932	265,962	615,893	(586,441)	29,453	586,441	615,893	149,076	4.23%	6,300	-	609,593	364,763
231800	190200	Physical Planning	-	-	-	(3,472)	(3,472)	3,472	-	-	4.23%	-	-	-	-
231801	124319	Disaster Recovery Planning	(316)	-	(316)	-	(316)	-	(316)	-	4.23%	-	-	(316)	(316)
231802	124319	Disaster Recovery Planning	60,256	1,388	61,644	-	61,644	-	61,644	-	4.23%	-	4,373	57,271	57,271
231900	190079	IGC-PlanAdmin-UnAlloc	522,426	-	522,426	(522,426)	-	522,426	522,426	-	4.23%	-	485,453	36,973	36,973
231900	190200	Physical Planning	1,175,036	92,083	1,267,118	(1,267,118)	-	1,267,118	1,267,118	-	4.23%	-	32,760	1,234,358	1,177,111
261010	190200	Physical Planning	24,259	-	24,259	-	24,259	-	24,259	-	4.23%	-	2,400	21,859	21,859
490000	190200	Physical Planning	5,000	-	5,000	(4,524)	476	4,524	5,000	-	4.23%	-	5,000	-	-
<b>Total Planning Department</b>			<b>5,230,893</b>	<b>3,412,939</b>	<b>8,643,832</b>	<b>(4,653,050)</b>	<b>3,990,782</b>	<b>3,087,474</b>	<b>7,078,256</b>	<b>2,345,896</b>		<b>99,145</b>	<b>689,319</b>	<b>6,289,792</b>	<b>4,476,871</b>

\* Cost Centers allocate within department. To avoid double counting, calculations were adjusted to exclude: "Adjustment for Billings to Non-Chargeout units"; "Allowable IGCs Treated as Indirect Costs (Actual Indirects)" and "Allowable Directs"

**ALLOCATIONS OF UNALLOWABLE COSTS FROM ADMIN UNITS**

to be included in recipient Division Rate Calculations, if different from sender division within this department, in the "Allocation of Net Costs (over/underbilled costs) as Indirects from:"

Sender Cost Center		Amount 2020		Distribution Percent	Recipient Department	Flow Thru
		(Over)/Under Billed				
101000	190000	(16,068)	9.52%	Outside Department	(16,068)	Add to Indirect Cost Rate because recipients are outside department
101000	190000	(152,718)	90.48%	Planning	-	Already included in Indirect Cost Rate because recipients are within department.
		<b>(168,786)</b>	<b>100.00%</b>		<b>(16,068)</b>	<b>TOTAL Flow Thru</b>

CSP Cat.	Department	Cost Center Description	Fiscal		Cost		Actuals
			Year	Fund	Center	Acct	
Planning	Planning	Planning Administration	2020	101000	190000	501010	202,585.52
Planning	Planning	Planning Administration	2020	101000	190000	501020	397.70
Planning	Planning	Planning Administration	2020	101000	190000	501040	6,448.60
Planning	Planning	Planning Administration	2020	101000	190000	501080	45,467.89
Planning	Planning	Planning Administration	2020	101000	190000	501090	93.66
Planning	Planning	Planning Administration	2020	101000	190000	501100	53,979.14
Planning	Planning	Planning Administration	2020	101000	190000	501105	15,543.99
Planning	Planning	Planning Administration	2020	101000	190000	501115	51.45
Planning	Planning	Planning Administration	2020	101000	190000	501130	412.02
Planning	Planning	Planning Administration	2020	101000	190000	501140	278.22
Planning	Planning	Planning Administration	2020	101000	190000	511000	2,051.63
Planning	Planning	Planning Administration	2020	101000	190000	511010	1,557.41
Planning	Planning	Planning Administration	2020	101000	190000	511330	79.58
Planning	Planning	Planning Administration	2020	101000	190000	511360	1,563.68
Planning	Planning	Planning Administration	2020	101000	190000	530360	4,273.51
Planning	Planning	Planning Administration	2020	101000	190000	530380	647.44
Planning	Planning	Planning Administration	2020	101000	190000	540050	125.00
Planning	Planning	Planning Administration	2020	101000	190000	540160	2,255.00
Planning	Planning	Planning Administration	2020	101000	190000	540190	31.00
Planning	Planning	Planning Administration	2020	101000	190000	540300	2,398.00
Planning	Planning	Planning Administration	2020	101000	190000	540315	17.00
Planning	Planning	Planning Administration	2020	101000	190000	570210	7,118.67
Planning	Planning	Planning Administration	2020	101000	190000	590200	5,349.39
Planning	Planning	Physical Planning	2020	101000	190200	501010	474,079.07
Planning	Planning	Physical Planning	2020	101000	190200	501020	6,437.03
Planning	Planning	Physical Planning	2020	101000	190200	501040	52,368.07
Planning	Planning	Physical Planning	2020	101000	190200	501080	113,470.06
Planning	Planning	Physical Planning	2020	101000	190200	501090	218.93
Planning	Planning	Physical Planning	2020	101000	190200	501100	104,136.05
Planning	Planning	Physical Planning	2020	101000	190200	501105	41,070.15
Planning	Planning	Physical Planning	2020	101000	190200	501115	123.83
Planning	Planning	Physical Planning	2020	101000	190200	501130	1,061.61
Planning	Planning	Physical Planning	2020	101000	190200	501140	702.63
Planning	Planning	Physical Planning	2020	101000	190200	511000	59.00
Planning	Planning	Physical Planning	2020	101000	190200	511040	115.65
Planning	Planning	Physical Planning	2020	101000	190200	511050	153.89
Planning	Planning	Physical Planning	2020	101000	190200	511360	1,914.47
Planning	Planning	Physical Planning	2020	101000	190200	520050	66.00
Planning	Planning	Physical Planning	2020	101000	190200	530020	2.31
Planning	Planning	Physical Planning	2020	101000	190200	530380	20,263.95
Planning	Planning	Physical Planning	2020	101000	190200	540050	1,147.77
Planning	Planning	Physical Planning	2020	101000	190200	540160	2,589.30
Planning	Planning	Physical Planning	2020	101000	190200	540190	1,202.43
Planning	Planning	Physical Planning	2020	101000	190200	540220	80.85
Planning	Planning	Physical Planning	2020	101000	190200	540271	863.76
Planning	Planning	Physical Planning	2020	101000	190200	540315	192.50
Planning	Planning	Physical Planning	2020	101000	190200	540440	688.34
Planning	Planning	Physical Planning	2020	101000	190200	540650	13.99
Planning	Planning	Physical Planning	2020	101000	190200	570210	4,797.68
Planning	Planning	Zoning & Platting	2020	101000	190300	501010	1,081,950.05
Planning	Planning	Zoning & Platting	2020	101000	190300	501020	25,795.40
Planning	Planning	Zoning & Platting	2020	101000	190300	501040	99,597.07
Planning	Planning	Zoning & Platting	2020	101000	190300	501080	254,470.64
Planning	Planning	Zoning & Platting	2020	101000	190300	501090	577.61
Planning	Planning	Zoning & Platting	2020	101000	190300	501100	286,382.37
Planning	Planning	Zoning & Platting	2020	101000	190300	501105	92,783.98
Planning	Planning	Zoning & Platting	2020	101000	190300	501115	313.47
Planning	Planning	Zoning & Platting	2020	101000	190300	501130	2,436.71
Planning	Planning	Zoning & Platting	2020	101000	190300	501140	1,511.83
Planning	Planning	Zoning & Platting	2020	101000	190300	511000	1,484.56
Planning	Planning	Zoning & Platting	2020	101000	190300	511010	113.40
Planning	Planning	Zoning & Platting	2020	101000	190300	511360	1,599.30



CSP Cat.	Department	Cost Center Description	Fiscal Year	Fund	Cost Center	Acct	Actuals
	Planning	Zoning & Platting	2020	101000	190300	511370	1,320.00
	Planning	Zoning & Platting	2020	101000	190300	530060	32.00
	Planning	Zoning & Platting	2020	101000	190300	530360	2,811.56
	Planning	Zoning & Platting	2020	101000	190300	530380	331.68
	Planning	Zoning & Platting	2020	101000	190300	540030	14,172.00
	Planning	Zoning & Platting	2020	101000	190300	540050	2,560.00
	Planning	Zoning & Platting	2020	101000	190300	540190	392.59
	Planning	Zoning & Platting	2020	101000	190300	540200	27,989.24
	Planning	Zoning & Platting	2020	101000	190300	540271	935.73
	Planning	Zoning & Platting	2020	101000	190300	540300	2,834.00
	Planning	Zoning & Platting	2020	101000	190300	540440	4,874.75
	Planning	Zoning & Platting	2020	101000	190300	570210	3,615.41
	Planning	Zoning & Platting	2020	101000	190300	590210	2,871.63
	Planning	Land Use Plan Review	2020	101000	192060	501010	172,193.99
	Planning	Land Use Plan Review	2020	101000	192060	501020	23,997.14
	Planning	Land Use Plan Review	2020	101000	192060	501040	43,808.02
	Planning	Land Use Plan Review	2020	101000	192060	501080	44,384.08
	Planning	Land Use Plan Review	2020	101000	192060	501090	81.52
	Planning	Land Use Plan Review	2020	101000	192060	501100	46,208.29
	Planning	Land Use Plan Review	2020	101000	192060	501105	17,977.71
	Planning	Land Use Plan Review	2020	101000	192060	501115	45.33
	Planning	Land Use Plan Review	2020	101000	192060	501130	485.09
	Planning	Land Use Plan Review	2020	101000	192060	501140	239.24
	Planning	Land Use Plan Review	2020	101000	192060	511010	16.03
	Planning	Land Use Plan Review	2020	101000	192060	511360	88.24
	Planning	Land Use Plan Review	2020	101000	192060	530020	33.02
	Planning	Land Use Plan Review	2020	101000	192060	540170	296.36
	Planning	Land Use Plan Review	2020	101000	192060	540190	77.42
	Planning	Land Use Plan Review	2020	101000	192060	540610	0.15
	Planning	Disaster Recovery Planning	2020	231801	124319	501100	(316.05)
	Planning	Disaster Recovery Planning	2020	231802	124319	501010	25,693.21
	Planning	Disaster Recovery Planning	2020	231802	124319	501020	2,733.16
	Planning	Disaster Recovery Planning	2020	231802	124319	501080	6,168.85
	Planning	Disaster Recovery Planning	2020	231802	124319	501090	10.63
	Planning	Disaster Recovery Planning	2020	231802	124319	501100	6,049.53
	Planning	Disaster Recovery Planning	2020	231802	124319	501105	2,160.83
	Planning	Disaster Recovery Planning	2020	231802	124319	501130	56.05
	Planning	Disaster Recovery Planning	2020	231802	124319	511000	5,290.01
	Planning	Disaster Recovery Planning	2020	231802	124319	511030	5,980.50
	Planning	Disaster Recovery Planning	2020	231802	124319	511360	1,053.63
	Planning	Disaster Recovery Planning	2020	231802	124319	540260	686.40
	Planning	Disaster Recovery Planning	2020	231802	124319	570210	4,372.97
	Planning	IGC-PlanAdmin-UnAlloc	2020	231900	190079	511010	168.44
	Planning	IGC-PlanAdmin-UnAlloc	2020	231900	190079	511130	969.69
	Planning	IGC-PlanAdmin-UnAlloc	2020	231900	190079	511360	2,398.91
	Planning	IGC-PlanAdmin-UnAlloc	2020	231900	190079	530360	5,039.00
	Planning	IGC-PlanAdmin-UnAlloc	2020	231900	190079	530380	22,725.00
	Planning	IGC-PlanAdmin-UnAlloc	2020	231900	190079	540100	257,670.00
	Planning	IGC-PlanAdmin-UnAlloc	2020	231900	190079	540200	1,479.45
	Planning	IGC-PlanAdmin-UnAlloc	2020	231900	190079	570210	7,433.00
	Planning	IGC-PlanAdmin-UnAlloc	2020	231900	190079	570220	220,350.00
	Planning	IGC-PlanAdmin-UnAlloc	2020	231900	190079	590210	4,192.43
	Planning	Physical Planning	2020	231900	190200	501010	597,703.38
	Planning	Physical Planning	2020	231900	190200	501020	20,260.16
	Planning	Physical Planning	2020	231900	190200	501040	39,089.46
	Planning	Physical Planning	2020	231900	190200	501080	139,259.56
	Planning	Physical Planning	2020	231900	190200	501090	272.28
	Planning	Physical Planning	2020	231900	190200	501100	151,916.86
	Planning	Physical Planning	2020	231900	190200	501105	49,285.98
	Planning	Physical Planning	2020	231900	190200	501115	145.76
	Planning	Physical Planning	2020	231900	190200	501130	1,294.23
	Planning	Physical Planning	2020	231900	190200	501140	807.30

CSP		Direct Expenditures					Planning
Cat.	Department	Cost Center Description	Fiscal Year	Fund	Cost Center	Acct	Actuals
	Planning	Physical Planning	2020	231900	190200	511000	705.51
	Planning	Physical Planning	2020	231900	190200	511040	142.47
	Planning	Physical Planning	2020	231900	190200	511050	1,080.00
	Planning	Physical Planning	2020	231900	190200	511090	597.10
	Planning	Physical Planning	2020	231900	190200	511360	1,245.50
	Planning	Physical Planning	2020	231900	190200	520040	1,383.25
	Planning	Physical Planning	2020	231900	190200	520050	171.06
	Planning	Physical Planning	2020	231900	190200	520060	1,428.01
	Planning	Physical Planning	2020	231900	190200	520070	312.00
	Planning	Physical Planning	2020	231900	190200	520080	578.13
	Planning	Physical Planning	2020	231900	190200	530360	1,895.23
	Planning	Physical Planning	2020	231900	190200	530380	123,201.36
	Planning	Physical Planning	2020	231900	190200	540040	5,591.46
	Planning	Physical Planning	2020	231900	190200	540050	1,600.00
	Planning	Physical Planning	2020	231900	190200	540150	25,881.06
	Planning	Physical Planning	2020	231900	190200	540170	328.42
	Planning	Physical Planning	2020	231900	190200	540180	84.05
	Planning	Physical Planning	2020	231900	190200	540190	745.05
	Planning	Physical Planning	2020	231900	190200	540271	1,151.68
	Planning	Physical Planning	2020	231900	190200	570210	6,879.19
	Planning	Physical Planning	2020	261010	190200	530380	21,858.75
	Planning	Physical Planning	2020	261010	190200	540150	2,400.00
	Planning	Physical Planning	2020	490000	190200	580530	5,000.00
							<u>5,230,893.32</u>

CSP Cat.	Department	Cost Center Description	Fiscal		Cost		Actuals
			Year	Fund	Center	Acct	
Planning	Planning	Planning Administration	2020	101000	190000	600020	30,092.87
Planning	Planning	Planning Administration	2020	101000	190000	600030	4,960.46
Planning	Planning	Planning Administration	2020	101000	190000	600050	3,712.06
Planning	Planning	Planning Administration	2020	101000	190000	600060	6,508.90
Planning	Planning	Planning Administration	2020	101000	190000	600080	12,181.70
Planning	Planning	Planning Administration	2020	101000	190000	600090	11,126.16
Planning	Planning	Planning Administration	2020	101000	190000	600120	234.32
Planning	Planning	Planning Administration	2020	101000	190000	600140	573.87
Planning	Planning	Planning Administration	2020	101000	190000	600150	9,903.83
Planning	Planning	Planning Administration	2020	101000	190000	600160	112,942.60
Planning	Planning	Planning Administration	2020	101000	190000	600190	4,505.18
Planning	Planning	Planning Administration	2020	101000	190000	600200	66,791.52
Planning	Planning	Planning Administration	2020	101000	190000	600220	4,291.29
Planning	Planning	Planning Administration	2020	101000	190000	600240	20,091.36
Planning	Planning	Planning Administration	2020	101000	190000	600250	534.23
Planning	Planning	Planning Administration	2020	101000	190000	600280	13,124.12
Planning	Planning	Planning Administration	2020	101000	190000	600290	22,644.35
Planning	Planning	Planning Administration	2020	101000	190000	600300	10,412.60
Planning	Planning	Planning Administration	2020	101000	190000	600320	5,860.20
Planning	Planning	Planning Administration	2020	101000	190000	600330	3,570.75
Planning	Planning	Planning Administration	2020	101000	190000	600360	24,301.87
Planning	Planning	Planning Administration	2020	101000	190000	600370	3,810.67
Planning	Planning	Planning Administration	2020	101000	190000	600540	27,760.27
Planning	Planning	Planning Administration	2020	101000	190000	600570	4,162.49
Planning	Planning	Planning Administration	2020	101000	190000	600580	16,354.30
Planning	Planning	Planning Administration	2020	101000	190000	600610	13,640.20
Planning	Planning	Planning Administration	2020	101000	190000	600970	360,781.56
Planning	Planning	Planning Administration	2020	101000	190000	601580	55,127.03
Planning	Planning	Planning Administration	2020	101000	190000	601590	44,471.19
Planning	Planning	Planning Administration	2020	101000	190000	601600	8,401.65
Planning	Planning	Planning Administration	2020	101000	190000	601680	0.16
Planning	Planning	Planning Administration	2020	101000	190000	601690	144,166.18
Planning	Planning	Planning Administration	2020	101000	190000	601820	26,038.41
Planning	Planning	Planning Administration	2020	101000	190000	601840	2,856.20
Planning	Planning	Planning Administration	2020	101000	190000	601850	4,385.28
Planning	Planning	Planning Administration	2020	101000	190000	601880	35,949.00
Planning	Planning	Planning Administration	2020	101000	190000	601890	66,787.00
Planning	Planning	Planning Administration	2020	101000	190000	601900	15,365.52
Planning	Planning	Planning Administration	2020	101000	190000	601910	4,175.79
Planning	Planning	Planning Administration	2020	101000	190000	605530	3,851.59
Planning	Planning	Planning Administration	2020	101000	190000	605540	6,401.89
Planning	Planning	Physical Planning	2020	101000	190200	600550	372,690.42
Planning	Planning	Physical Planning	2020	101000	190200	601300	183,685.37
Planning	Planning	Physical Planning	2020	101000	190200	601410	3,200.72
Planning	Planning	Physical Planning	2020	101000	190200	605530	9,899.88
Planning	Planning	Physical Planning	2020	101000	190200	605540	16,455.62
Planning	Planning	Zoning & Platting	2020	101000	190300	600250	18,965.27
Planning	Planning	Zoning & Platting	2020	101000	190300	600430	3,560.78
Planning	Planning	Zoning & Platting	2020	101000	190300	600550	1,043,533.23
Planning	Planning	Zoning & Platting	2020	101000	190300	601410	60,146.83
Planning	Planning	Zoning & Platting	2020	101000	190300	602930	67,966.82
Planning	Planning	Zoning & Platting	2020	101000	190300	605530	22,741.92
Planning	Planning	Zoning & Platting	2020	101000	190300	605540	37,809.29
Planning	Planning	Land Use Plan Review	2020	101000	192060	600550	149,076.21
Planning	Planning	Land Use Plan Review	2020	101000	192060	601410	106,557.24
Planning	Planning	Land Use Plan Review	2020	101000	192060	605530	3,200.66
Planning	Planning	Land Use Plan Review	2020	101000	192060	605540	7,127.44
Planning	Planning	Disaster Recovery Planning	2020	231802	124319	605530	521.54
Planning	Planning	Disaster Recovery Planning	2020	231802	124319	605540	866.42
Planning	Planning	Physical Planning	2020	231900	190200	600230	652.50
Planning	Planning	Physical Planning	2020	231900	190200	605530	11,770.73
Planning	Planning	Physical Planning	2020	231900	190200	605540	19,886.49

<b>CSP</b>			<b>Fiscal</b>	<b>Cost</b>			
<b>Cat.</b>	<b>Department</b>	<b>Cost Center Description</b>	<b>Year</b>	<b>Fund</b>	<b>Center</b>	<b>Acct</b>	<b>Actuals</b>
	Planning	Physical Planning	2020	231900	190200	615200	59,773.00
							<u>3,412,939.00</u>

CSP						Cost		
Cat.	Department	Cost Center Description	Fiscal Year	Fund	Center	Acct	Actuals	
	Planning	Planning Administration	2020	101000	190000	408380	(276.26)	
	Planning	Planning Administration	2020	101000	190000	600550	(1,565,299.86)	
	Planning	Physical Planning	2020	101000	190200	404220	(1,635.00)	
	Planning	Physical Planning	2020	101000	190200	406110	(242.50)	
	Planning	Physical Planning	2020	101000	190200	408380	(31.79)	
	Planning	Zoning & Platting	2020	101000	190300	404180	(10,832.50)	
	Planning	Zoning & Platting	2020	101000	190300	404220	(39,325.00)	
	Planning	Zoning & Platting	2020	101000	190300	406050	(243,857.31)	
	Planning	Zoning & Platting	2020	101000	190300	406060	(404,534.66)	
	Planning	Zoning & Platting	2020	101000	190300	406110	(2,430.00)	
	Planning	Zoning & Platting	2020	101000	190300	406580	(300.64)	
	Planning	Zoning & Platting	2020	101000	190300	406625	(243.00)	
	Planning	Zoning & Platting	2020	101000	190300	408380	(60.73)	
	Planning	Land Use Plan Review	2020	101000	192060	404090	(469,914.70)	
	Planning	Land Use Plan Review	2020	101000	192060	404170	(108,550.83)	
	Planning	Land Use Plan Review	2020	101000	192060	406030	(7,967.38)	
	Planning	Land Use Plan Review	2020	101000	192060	408380	(7.62)	
	Planning	Physical Planning	2020	231800	190200	450010	(3,472.00)	
	Planning	IGC-PlanAdmin-UnAlloc	2020	231900	190079	405150	(522,425.92)	
	Planning	Physical Planning	2020	231900	190200	405010	(10,039.50)	
	Planning	Physical Planning	2020	231900	190200	405150	(1,257,078.72)	
	Planning	Physical Planning	2020	490000	190200	440010	(4,524.45)	
							<u>(4,653,050.37)</u>	

<b>CSP</b>							
<b>Cat.</b>	<b>Department</b>	<b>Cost Center Description</b>	<b>Fiscal Year</b>	<b>Fund</b>	<b>Cost Center</b>	<b>Acct</b>	<b>Actuals</b>
Planning		Planning Administration	2020	101000	190000	600020	30,092.87
Planning		Planning Administration	2020	101000	190000	600030	4,960.46
Planning		Planning Administration	2020	101000	190000	600050	3,712.06
Planning		Planning Administration	2020	101000	190000	600060	6,508.90
Planning		Planning Administration	2020	101000	190000	600090	11,126.16
Planning		Planning Administration	2020	101000	190000	600120	234.32
Planning		Planning Administration	2020	101000	190000	600140	573.87
Planning		Planning Administration	2020	101000	190000	600150	9,903.83
Planning		Planning Administration	2020	101000	190000	600200	66,791.52
Planning		Planning Administration	2020	101000	190000	600220	4,291.29
Planning		Planning Administration	2020	101000	190000	600240	20,091.36
Planning		Planning Administration	2020	101000	190000	600250	534.23
Planning		Planning Administration	2020	101000	190000	600280	13,124.12
Planning		Planning Administration	2020	101000	190000	600290	22,644.35
Planning		Planning Administration	2020	101000	190000	600300	10,412.60
Planning		Planning Administration	2020	101000	190000	600320	5,860.20
Planning		Planning Administration	2020	101000	190000	600330	3,570.75
Planning		Planning Administration	2020	101000	190000	600360	24,301.87
Planning		Planning Administration	2020	101000	190000	600370	3,810.67
Planning		Planning Administration	2020	101000	190000	600540	27,760.27
Planning		Planning Administration	2020	101000	190000	600570	4,162.49
Planning		Planning Administration	2020	101000	190000	600580	16,354.30
Planning		Planning Administration	2020	101000	190000	600610	13,640.20
Planning		Planning Administration	2020	101000	190000	600970	360,781.56
Planning		Planning Administration	2020	101000	190000	601820	26,038.41
Planning		Planning Administration	2020	101000	190000	601890	66,787.00
Planning		Physical Planning	2020	101000	190200	600550	372,690.42
Planning		Zoning & Platting	2020	101000	190300	600250	18,965.27
Planning		Zoning & Platting	2020	101000	190300	600430	3,560.78
Planning		Zoning & Platting	2020	101000	190300	600550	1,043,533.23
Planning		Land Use Plan Review	2020	101000	192060	600550	149,076.21
							<u>2,345,895.57</u>

<b>CSP</b>			<b>Fiscal</b>		<b>Cost</b>		
<b>Cat.</b>	<b>Department</b>	<b>Cost Center Description</b>	<b>Year</b>	<b>Fund</b>	<b>Center</b>	<b>Acct</b>	<b>Actuals</b>
	Planning	Planning Administration	2020	101000	190000	570210	7,118.67
	Planning	Planning Administration	2020	101000	190000	600080	12,181.70
	Planning	Planning Administration	2020	101000	190000	600160	112,942.60
	Planning	Planning Administration	2020	101000	190000	600190	4,505.18
	Planning	Physical Planning	2020	101000	190200	570210	4,797.68
	Planning	Zoning & Platting	2020	101000	190300	540030	14,172.00
	Planning	Zoning & Platting	2020	101000	190300	570210	3,615.41
	Planning	Disaster Recovery Planning	2020	231802	124319	570210	4,372.97
	Planning	IGC-PlanAdmin-UnAlloc	2020	231900	190079	540100	257,670.00
	Planning	IGC-PlanAdmin-UnAlloc	2020	231900	190079	570210	7,433.00
	Planning	IGC-PlanAdmin-UnAlloc	2020	231900	190079	570220	220,350.00
	Planning	Physical Planning	2020	231900	190200	540150	25,881.06
	Planning	Physical Planning	2020	231900	190200	570210	6,879.19
	Planning	Physical Planning	2020	261010	190200	540150	2,400.00
	Planning	Physical Planning	2020	490000	190200	580530	5,000.00
							<u>689,319.46</u>



## Municipality of Anchorage

### Intragovernmental Charges Methodologies

**Department:** Planning

**Contact:** Michelle McNulty

**Fund:** 101000

**Telephone:** 343-7901

**Cost Pool (Cost Center / Name):** 190000 / Planning Administration

**Services Provided:** Houses the department director, key managers, and administrative staff that directs and supports work by all groups in the department. Additionally, most central services costs for this department are collected in this pool. Included as a department in AMC 3.20.

**Charge-Out Methodology:** Allocation of cost pool is based on the ratio of current year budgeted position counts for each recipient cost center to total current year budgeted position counts for all recipient cost centers.

**Allocation Factor:**

Month-end automated calculation