

Municipality of Anchorage

- Alaska –

2022

Health

Department

Indirect Cost Proposal



Dave Bronson

Mayor

Cheryl Frasca

Director, Office of Management & Budget

Health Department
2022
INDIRECT COST PROPOSAL

Table of Contents

GENERAL INFORMATION

Certification of Indirect Costs.....	1
Introduction to Indirect Cost Proposal.....	2
Organizational Chart at 01/01/2020.....	3

INDIRECT COST RATE COMPUTATION

Health Department Rate.....	4
-----------------------------	---

2020 FINANCIAL INFORMATION

Summary of Billing Units (Including Adjustments).....	5
Detail of Direct Expenditures.....	6
Detail of IGC Expenditures (Direct and Indirect).....	17
Detail of Billings (IGC) and Program Revenues.....	20
Detail of Charges from Central Services Plan IGCs.....	22
Detail of Non-Allowable Expense Adj - Within Unit.....	23

INTRAGOVERNMENTAL CHARGE-OUT METHODOLOGIES

The Health & Human Services department does not allocate out costs

Certificate of Indirect Costs


This is to certify that I have reviewed the indirect cost proposal submitted herewith and to the best of my knowledge and belief:


- (1) All costs included in this proposal to establish billing or final indirect cost rates for the period of January 1, 2022 through December 31, 2022 are allowable in accordance with the requirements of this Part and the Federal award(s) to which they apply.¹ Unallowable costs have been adjusted for in allocating costs as indicated in the cost allocation plan.
- (2) All costs included in this proposal are properly allocable to Federal awards on the basis of a beneficial or a causal relationship between the expenses incurred and the agreements to which they are allocated in accordance with applicable requirements. Further, the same costs that have been treated as indirect costs have not been claimed as direct costs. Similar types of costs have been accounted for consistently.

I declare the foregoing is true and correct

Municipality of Anchorage
Anchorage, Alaska

Parrish, Blessing & Associates
Anchorage, Alaska


(Signature)


(Signature)

Cheryl Frasca
Director, Office of Management & Budget
Date of Execution: 3/8/22

William J. Wilks
Preparer
Date of Execution: 3/8/22

¹ Office of Management and Budget, 2CFR Chapter 1 and Chapter 11, Parts 200, 215, 220, 225, and 230. Uniform Administration Requirements, Cost Principles, and Audit Requirements for Federal Awards.

Introduction to Indirect Cost Rate Proposal

This document presents the Indirect Cost Rate Proposal for the Municipality of Anchorage for the period January 1, 2022 through December 31, 2022. This proposal supports our department's claim to indirect costs on grants and contracts with Federal and State government agencies. Costs presented in this proposal are based on calendar year 2020 actual expenses and organizational structure.

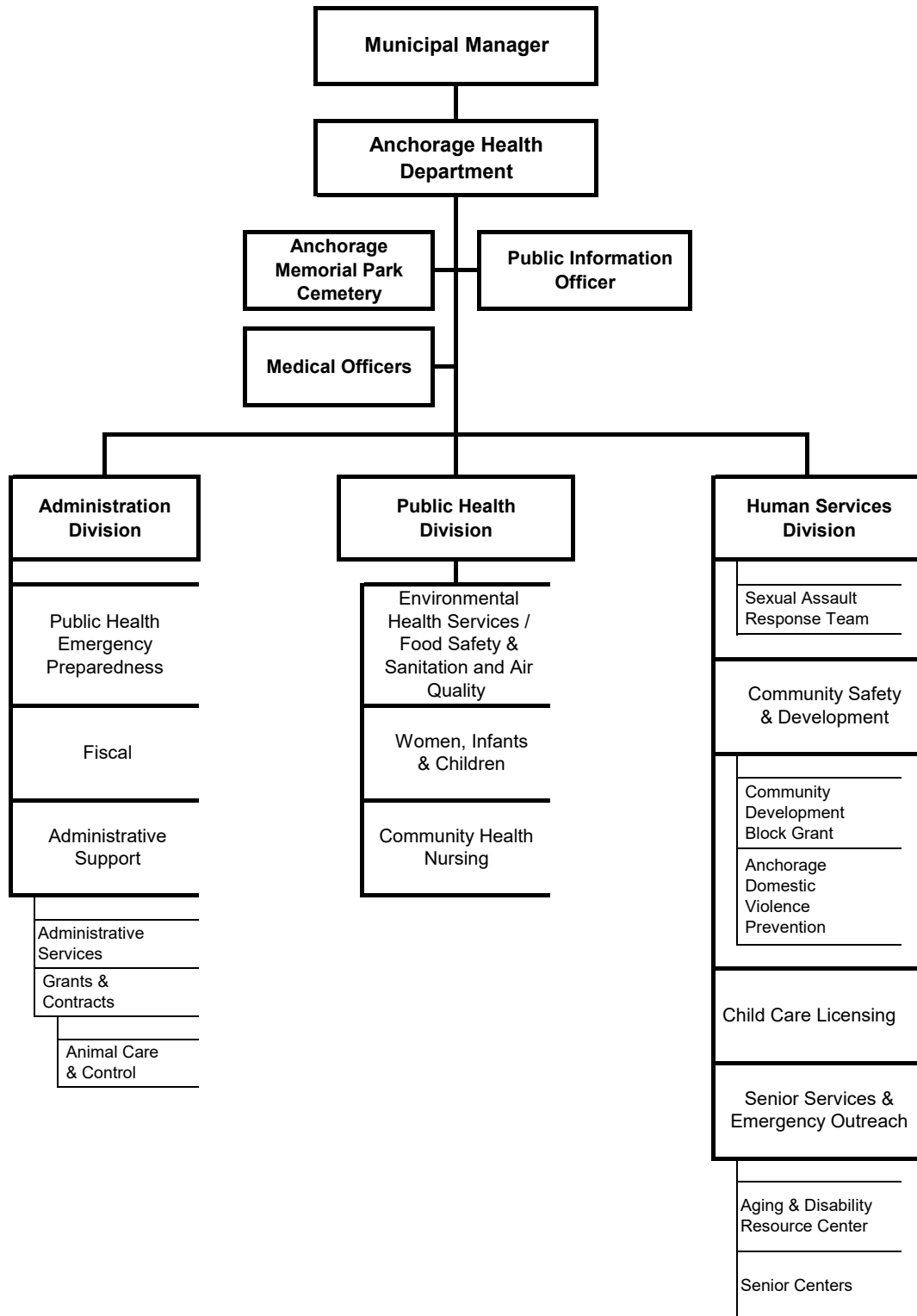
One indirect cost rate is developed for each department that charges indirect costs to grants. This percentage of indirect costs is computed based on total direct costs for the department.

Costs included in the indirect cost rates include Intragovernmental Charges (IGCs) from department and division administrative units. Indirect costs also include a share of the allocated central service units' costs as identified in the Municipality of Anchorage's 2022 Central Services Cost Allocation Plan. In addition, IGCs from central service units, department and division charging units have been adjusted to subtract costs that are unallowable according to guidelines presented in the Circular FTA C 5010.1E and the Office of Management and Budget guidance on Administrative Requirements, Cost Principles, and Audit Requirements for Federal Awards released December 26, 2013.

Anchorage Health Department



**Anchorage
Health
Department**



Indirect Cost Rate Computation



**Health
Department**

Cost Item	Amount
Actual Indirects	\$ 3,488,057
Allocation of Net Costs (over/underbilled costs) as Indirects from:	
None	-
Total Indirects	\$ 3,488,057
Base (Allowable Net Directs)	\$ 21,300,598
2022 Rate	16.4%



**Summary of Billing Units (Including Adjustments)
Municipality of Anchorage
Indirect Cost Rate Proposal
Summary of Costs
Using Results as of December 31, 2020**

**Health
Department**

Fund	Cost Center	Description	Direct Expenditures	IGC Expenditures (Direct and Indirect)	Total Direct and IGC Expenditures	Billings (IGC) and Program Revenues	Net Costs	Adjustment for Billings to Non Chargeout Units	Net Costs, After Adj	Non-Allowable Expense Adj		Allowable IGCs Treated as Indirect Costs (Actual Indirects)	Allowable Net Directs		
										Charges from Central Services Plan IGCs	% Not Allowable (from CSP)			From Central Services Plan	Within Unit
101000	211000	AHD Director's Office	334,755	3,558,738	3,893,493	(20)	3,893,473	20	3,893,493	4.23%	103,170	291,080	3,499,243	374,547	
101000	212000	Medical Director	138,544	1,871	140,415	-	140,415	-	140,415	4.23%	-	-	140,415	140,415	
101000	215000	AHD Debt Service	7,120	-	7,120	(428)	6,691	428	7,120	4.23%	-	7,120	-	-	
101000	221000	Administration Division Support	713,030	13,608	726,638	(28)	726,610	28	726,638	4.23%	112	4,860	721,666	716,635	
101000	222000	AHD Fiscal Support	359,564	(88,703)	270,861	(15)	270,847	15	270,861	4.23%	-	1,301	269,560	359,288	
101000	224000	AHD Grants and Contracts	1,029,053	25,694	1,054,747	(24,494)	1,030,252	24,494	1,054,747	4.23%	-	497,178	557,569	540,683	
101000	225000	Animal Care & Control	2,226,140	1,593	2,227,733	(408,912)	1,818,822	408,912	2,227,733	4.23%	1,593	22,257	2,205,409	2,203,883	
101000	232000	Public Health Division	5,195,562	(37,747)	5,157,815	(10)	5,157,805	10	5,157,815	4.23%	-	5,001,474	156,342	195,700	
101000	233000	Senior Svcs & Emerg. Outreach	1,051,905	2,374	1,054,279	(31)	1,054,248	31	1,054,279	4.23%	-	12,907	1,041,372	1,041,372	
101000	235000	Child Care Licensing	23,527	(61,426)	(37,899)	(39,358)	(77,258)	39,358	(37,899)	4.23%	-	5,115	(43,014)	(58,830)	
101000	236000	Anchorage Safety Center/Patrol	2,209,172	592	2,209,764	(5)	2,209,760	5	2,209,764	4.23%	-	209,007	2,000,757	2,000,757	
101000	238000	Women, Infants & Children	70,328	18,477	88,805	(29,972)	58,833	29,972	88,805	4.23%	883	-	87,922	16,728	
101000	239000	Anchorage Domestic Violence Progra	396,456	4,871	401,327	-	401,327	-	401,327	4.23%	-	186,624	214,703	214,703	
101000	240500	AHD Emergency Preparedness	78,891	1,546	80,436	-	80,436	-	80,436	4.23%	-	-	80,436	80,436	
101000	241000	Human Services Division	1,048,231	(1,799)	1,046,433	(3,966)	1,042,467	3,966	1,046,433	4.23%	321	754,381	291,730	297,279	
101000	242000	Community Safety & Development	2,508,960	-	2,508,960	(36)	2,508,925	36	2,508,960	4.23%	-	2,508,894	66	66	
101000	243000	Health Information Mgmt	-	-	-	155	155	(155)	-	4.23%	-	-	-	-	
101000	244000	Homelessness	2,424,174	132	2,424,306	-	2,424,306	-	2,424,306	4.23%	-	2,404,178	20,128	20,128	
101000	245000	Disease Prevention & Control	-	-	-	(27)	(27)	27	-	4.23%	-	-	-	-	
101000	246000	Community Health Nursing	676,125	(237,167)	438,958	(42,903)	396,055	42,903	438,958	4.23%	1	2,391	436,565	556,310	
101000	256000	Environmental Health Services	1,380,100	25,550	1,405,649	(907,722)	497,928	1,405,649	907,722	4.23%	-	12,645	1,393,004	1,386,234	
101000	271000	Anchorage Memorial Cemetery	443,951	14,015	457,966	(362,576)	95,391	362,576	457,966	4.23%	-	80,741	377,225	365,734	
101000	272000	SART Program	349,577	-	349,577	-	349,577	-	349,577	4.23%	-	-	349,577	349,577	
231800	224000	AHD Grants and Contracts	241,163	-	241,163	(242,982)	(1,819)	242,982	241,163	4.23%	-	241,163	-	-	
231900	224000	AHD Grants and Contracts	774,157	37,975	812,132	(812,132)	812,132	-	812,132	4.23%	-	774,157	37,975	20,656	
231900	232000	Public Health Division	706,309	107,173	813,481	(813,481)	813,481	-	813,481	4.23%	-	385	813,097	65,405	
231900	233000	Senior Svcs & Emerg. Outreach	652,988	37,429	690,417	(689,177)	1,240	689,177	690,417	4.23%	-	2,309	688,107	21,236	
231900	235000	Child Care Licensing	11,823,891	217,564	12,041,455	(12,041,455)	-	12,041,455	12,041,455	4.23%	-	10,501,402	1,540,052	131,442	
231900	236000	Anchorage Safety Center/Patrol	201,194	32,214	233,408	(233,408)	-	233,408	233,408	4.23%	-	7,402	226,006	28,433	
231900	238000	Women, Infants & Children	669,172	62,133	731,305	(731,305)	-	731,305	731,305	4.23%	26	7,748	723,532	22,491	
231900	240500	AHD Emergency Preparedness	1,773,426	38,630	1,812,056	(1,812,056)	-	1,812,056	1,812,056	4.23%	-	97,484	1,714,572	28,432	
231900	241000	Human Services Division	(0)	39,661	39,661	(39,661)	-	39,661	39,661	4.23%	-	3,150	36,511	36,511	
231900	242000	Community Safety & Development	26,297	844	27,141	(27,141)	-	27,141	27,141	4.23%	-	-	27,141	412	
231900	245000	Disease Prevention & Control	1,359,739	226,406	1,586,145	(1,586,145)	-	1,586,145	1,586,145	4.23%	6	-	1,586,139	134,670	
231900	246000	Community Health Nursing	1,696,049	149,059	1,845,108	(1,845,465)	(357)	1,845,465	1,845,108	4.23%	11	3,730	1,841,367	71,346	
231900	256000	Environmental Health Services	277,334	23,213	300,546	(300,546)	-	300,546	300,546	4.23%	-	107,162	193,384	16,677	
241800	242000	Community Safety & Development	150,275	11,577	161,852	(91,812)	70,040	91,812	161,852	4.23%	-	789	161,062	8,913	
241800	256000	Environmental Health Services	-	66	66	(506)	(440)	506	66	4.23%	-	-	66	63	
241900	242000	Community Safety & Development	1,355,855	5,380	1,361,235	(1,361,235)	-	1,361,235	1,361,235	4.23%	-	817,534	543,701	543,701	
241900	256000	Environmental Health Services	3,000	-	3,000	(3,000)	-	3,000	3,000	4.23%	-	3,000	-	-	
261010	221000	Administration Division Support	30,000	-	30,000	-	30,000	-	30,000	4.23%	-	-	30,000	30,000	
261010	224000	AHD Grants and Contracts	419,816	-	419,816	(250,000)	169,816	250,000	419,816	4.23%	-	23,513	396,303	396,303	
261010	225000	Animal Care & Control	2,808	-	2,808	(11,705)	(8,897)	11,705	2,808	4.23%	-	-	2,808	-	
261010	232000	Public Health Division	9,500	160	9,660	-	9,660	-	9,660	4.23%	-	-	9,660	153	
261010	244000	Homelessness	-	-	-	(479,397)	(479,397)	479,397	-	4.23%	-	-	-	-	
401100	221000	Administration Division Support	275,307	74,840	350,147	-	350,147	-	350,147	4.23%	2	9,806	340,339	269,225	
401100	225000	Animal Care & Control	6,938	2	6,938	-	6,938	-	6,938	4.23%	-	-	6,938	6,938	
401100	233000	Senior Svcs & Emerg. Outreach	27,050	68	27,118	-	27,118	-	27,118	4.23%	-	-	27,118	27,118	
401800	221000	Administration Division Support	21,110	147	21,257	-	21,257	-	21,257	4.23%	2	-	21,255	35	
401800	225000	Animal Care & Control	20,721	125	20,846	-	20,846	-	20,846	4.23%	-	-	20,846	20,846	
Total Health Department			45,228,923	4,267,221	49,496,145	(25,192,955)	24,303,190	25,192,955	49,496,145	2,474,987	104,601	24,602,889	24,788,655	3,488,057	21,300,598

* Cost Centers allocate within department. To avoid double counting, calculations were adjusted to exclude: "Adjustment for Billings to Non-Chargeout units"; "Allowable IGCs Treated as Indirect Costs (Actual Indirects)" and "Allowable Directs"

ALLOCATIONS OF UNALLOWABLE COSTS FROM ADMIN UNITS

to be included in recipient Division Rate Calculations, if different from sender division within this department, in the "Allocation of Net Costs (over/underbilled costs) as Indirects from:"

Sender Cost Center	Amount 2020		Distribution Percent	Recipient Department	Flow Thru
	(Over)/Under Billed				
No cost centers allocate within department	-	-	-	Does not allocate	-

CSP Cat.	Department	Cost Center Description	Fiscal		Cost		Actuals
			Year	Fund	Center	Acct	
Health		AHD Director's Office	2020	101000	211000	501010	204,686.32
Health		AHD Director's Office	2020	101000	211000	501040	16,659.94
Health		AHD Director's Office	2020	101000	211000	501080	44,768.29
Health		AHD Director's Office	2020	101000	211000	501090	91.24
Health		AHD Director's Office	2020	101000	211000	501100	52,142.83
Health		AHD Director's Office	2020	101000	211000	501105	15,640.26
Health		AHD Director's Office	2020	101000	211000	501115	49.50
Health		AHD Director's Office	2020	101000	211000	501130	436.98
Health		AHD Director's Office	2020	101000	211000	501140	279.85
Health		Medical Director	2020	101000	212000	501010	76,480.80
Health		Medical Director	2020	101000	212000	501040	16,424.81
Health		Medical Director	2020	101000	212000	501080	16,861.80
Health		Medical Director	2020	101000	212000	501090	28.39
Health		Medical Director	2020	101000	212000	501100	22,640.45
Health		Medical Director	2020	101000	212000	501105	5,789.81
Health		Medical Director	2020	101000	212000	501115	16.04
Health		Medical Director	2020	101000	212000	501130	153.29
Health		Medical Director	2020	101000	212000	501140	100.06
Health		Medical Director	2020	101000	212000	540170	48.60
Health		AHD Debt Service	2020	101000	215000	580010	4,223.32
Health		AHD Debt Service	2020	101000	215000	580020	2,885.84
Health		AHD Debt Service	2020	101000	215000	580030	0.04
Health		AHD Debt Service	2020	101000	215000	580140	10.46
Health		Administration Division Support	2020	101000	221000	501010	334,252.97
Health		Administration Division Support	2020	101000	221000	501020	5,090.37
Health		Administration Division Support	2020	101000	221000	501040	27,886.55
Health		Administration Division Support	2020	101000	221000	501080	75,608.50
Health		Administration Division Support	2020	101000	221000	501090	195.63
Health		Administration Division Support	2020	101000	221000	501100	110,348.93
Health		Administration Division Support	2020	101000	221000	501105	27,036.17
Health		Administration Division Support	2020	101000	221000	501115	179.48
Health		Administration Division Support	2020	101000	221000	501130	721.96
Health		Administration Division Support	2020	101000	221000	501140	787.80
Health		Administration Division Support	2020	101000	221000	511000	26,841.07
Health		Administration Division Support	2020	101000	221000	511010	3,973.93
Health		Administration Division Support	2020	101000	221000	511050	178.40
Health		Administration Division Support	2020	101000	221000	511090	532.00
Health		Administration Division Support	2020	101000	221000	511330	(75.10)
Health		Administration Division Support	2020	101000	221000	511340	255.51
Health		Administration Division Support	2020	101000	221000	511360	2,026.64
Health		Administration Division Support	2020	101000	221000	520040	1,431.94
Health		Administration Division Support	2020	101000	221000	530060	67.00
Health		Administration Division Support	2020	101000	221000	530377	3,470.96
Health		Administration Division Support	2020	101000	221000	530380	13,209.15
Health		Administration Division Support	2020	101000	221000	540040	3,040.00
Health		Administration Division Support	2020	101000	221000	540050	1,148.00
Health		Administration Division Support	2020	101000	221000	540170	13,258.40
Health		Administration Division Support	2020	101000	221000	540260	59.84
Health		Administration Division Support	2020	101000	221000	540271	3,249.24
Health		Administration Division Support	2020	101000	221000	540400	5,636.02
Health		Administration Division Support	2020	101000	221000	540640	47,511.12
Health		Administration Division Support	2020	101000	221000	570210	4,860.40
Health		Administration Division Support	2020	101000	221000	590210	247.14
Health		AHD Fiscal Support	2020	101000	222000	501010	198,088.51
Health		AHD Fiscal Support	2020	101000	222000	501020	8,526.69
Health		AHD Fiscal Support	2020	101000	222000	501040	11,351.18
Health		AHD Fiscal Support	2020	101000	222000	501080	47,407.02
Health		AHD Fiscal Support	2020	101000	222000	501090	141.30
Health		AHD Fiscal Support	2020	101000	222000	501100	71,093.72
Health		AHD Fiscal Support	2020	101000	222000	501105	16,573.86
Health		AHD Fiscal Support	2020	101000	222000	501115	75.99
Health		AHD Fiscal Support	2020	101000	222000	501130	428.14

CSP Cat.	Department	Cost Center Description	Fiscal		Cost		Health Actuals
			Year	Fund	Center	Acct	
	Health	AHD Fiscal Support	2020	101000	222000	501140	270.55
	Health	AHD Fiscal Support	2020	101000	222000	511000	75.83
	Health	AHD Fiscal Support	2020	101000	222000	511080	237.84
	Health	AHD Fiscal Support	2020	101000	222000	511090	428.99
	Health	AHD Fiscal Support	2020	101000	222000	511380	120.00
	Health	AHD Fiscal Support	2020	101000	222000	530060	57.00
	Health	AHD Fiscal Support	2020	101000	222000	540170	97.08
	Health	AHD Fiscal Support	2020	101000	222000	540200	40.10
	Health	AHD Fiscal Support	2020	101000	222000	540220	14.25
	Health	AHD Fiscal Support	2020	101000	222000	540271	1,252.48
	Health	AHD Fiscal Support	2020	101000	222000	570210	1,301.43
	Health	AHD Fiscal Support	2020	101000	222000	590210	1,982.51
	Health	AHD Grants and Contracts	2020	101000	224000	501010	290,922.37
	Health	AHD Grants and Contracts	2020	101000	224000	501020	6,284.04
	Health	AHD Grants and Contracts	2020	101000	224000	501040	56,286.00
	Health	AHD Grants and Contracts	2020	101000	224000	501080	66,178.11
	Health	AHD Grants and Contracts	2020	101000	224000	501090	156.35
	Health	AHD Grants and Contracts	2020	101000	224000	501100	75,908.75
	Health	AHD Grants and Contracts	2020	101000	224000	501105	26,911.52
	Health	AHD Grants and Contracts	2020	101000	224000	501115	81.59
	Health	AHD Grants and Contracts	2020	101000	224000	501130	694.25
	Health	AHD Grants and Contracts	2020	101000	224000	501140	392.93
	Health	AHD Grants and Contracts	2020	101000	224000	511000	772.34
	Health	AHD Grants and Contracts	2020	101000	224000	530060	87.25
	Health	AHD Grants and Contracts	2020	101000	224000	540010	4,230.53
	Health	AHD Grants and Contracts	2020	101000	224000	540050	574.00
	Health	AHD Grants and Contracts	2020	101000	224000	540170	194.28
	Health	AHD Grants and Contracts	2020	101000	224000	540260	59.84
	Health	AHD Grants and Contracts	2020	101000	224000	540271	2,140.42
	Health	AHD Grants and Contracts	2020	101000	224000	570210	4,196.23
	Health	AHD Grants and Contracts	2020	101000	224000	580530	492,982.00
	Health	Animal Care & Control	2020	101000	225000	511000	19,271.51
	Health	Animal Care & Control	2020	101000	225000	511090	1,214.00
	Health	Animal Care & Control	2020	101000	225000	511360	75.94
	Health	Animal Care & Control	2020	101000	225000	511380	1,453.29
	Health	Animal Care & Control	2020	101000	225000	530020	1,152.67
	Health	Animal Care & Control	2020	101000	225000	530360	262.95
	Health	Animal Care & Control	2020	101000	225000	530380	2,159,055.44
	Health	Animal Care & Control	2020	101000	225000	540040	384.00
	Health	Animal Care & Control	2020	101000	225000	540170	9,085.23
	Health	Animal Care & Control	2020	101000	225000	540200	2,880.00
	Health	Animal Care & Control	2020	101000	225000	540271	377.91
	Health	Animal Care & Control	2020	101000	225000	540640	3,655.00
	Health	Animal Care & Control	2020	101000	225000	560010	5,015.00
	Health	Animal Care & Control	2020	101000	225000	570210	11,107.26
	Health	Animal Care & Control	2020	101000	225000	570230	10,967.02
	Health	Animal Care & Control	2020	101000	225000	580530	183.00
	Health	Public Health Division	2020	101000	232000	501010	110,598.42
	Health	Public Health Division	2020	101000	232000	501020	505.73
	Health	Public Health Division	2020	101000	232000	501040	8,216.43
	Health	Public Health Division	2020	101000	232000	501080	24,072.77
	Health	Public Health Division	2020	101000	232000	501090	44.73
	Health	Public Health Division	2020	101000	232000	501100	25,600.82
	Health	Public Health Division	2020	101000	232000	501105	8,909.98
	Health	Public Health Division	2020	101000	232000	501115	24.79
	Health	Public Health Division	2020	101000	232000	501130	234.90
	Health	Public Health Division	2020	101000	232000	501140	148.79
	Health	Public Health Division	2020	101000	232000	511000	3,332.78
	Health	Public Health Division	2020	101000	232000	511010	1,607.15
	Health	Public Health Division	2020	101000	232000	511090	778.00
	Health	Public Health Division	2020	101000	232000	530020	101.58
	Health	Public Health Division	2020	101000	232000	530060	311.00

CSP Cat.	Department	Cost Center Description	Fiscal		Cost		Health Actuals
			Year	Fund	Center	Acct	
	Health	Public Health Division	2020	101000	232000	530380	8,937.50
	Health	Public Health Division	2020	101000	232000	540100	5,000,000.00
	Health	Public Health Division	2020	101000	232000	540170	663.05
	Health	Public Health Division	2020	101000	232000	540610	0.39
	Health	Public Health Division	2020	101000	232000	570210	1,473.61
	Health	Senior Svcs & Emerg. Outreach	2020	101000	233000	501010	87,774.86
	Health	Senior Svcs & Emerg. Outreach	2020	101000	233000	501020	3,643.06
	Health	Senior Svcs & Emerg. Outreach	2020	101000	233000	501040	11,758.42
	Health	Senior Svcs & Emerg. Outreach	2020	101000	233000	501080	20,663.33
	Health	Senior Svcs & Emerg. Outreach	2020	101000	233000	501090	58.77
	Health	Senior Svcs & Emerg. Outreach	2020	101000	233000	501100	33,396.31
	Health	Senior Svcs & Emerg. Outreach	2020	101000	233000	501105	7,612.91
	Health	Senior Svcs & Emerg. Outreach	2020	101000	233000	501115	32.13
	Health	Senior Svcs & Emerg. Outreach	2020	101000	233000	501130	203.53
	Health	Senior Svcs & Emerg. Outreach	2020	101000	233000	501140	123.17
	Health	Senior Svcs & Emerg. Outreach	2020	101000	233000	511000	67.72
	Health	Senior Svcs & Emerg. Outreach	2020	101000	233000	511010	2,346.14
	Health	Senior Svcs & Emerg. Outreach	2020	101000	233000	511090	994.99
	Health	Senior Svcs & Emerg. Outreach	2020	101000	233000	530060	115.00
	Health	Senior Svcs & Emerg. Outreach	2020	101000	233000	530380	525,700.00
	Health	Senior Svcs & Emerg. Outreach	2020	101000	233000	540050	45.00
	Health	Senior Svcs & Emerg. Outreach	2020	101000	233000	540170	973.28
	Health	Senior Svcs & Emerg. Outreach	2020	101000	233000	540640	343,000.00
	Health	Senior Svcs & Emerg. Outreach	2020	101000	233000	570210	12,907.22
	Health	Senior Svcs & Emerg. Outreach	2020	101000	233000	590210	488.98
	Health	Child Care Licensing	2020	101000	235000	511000	9,463.29
	Health	Child Care Licensing	2020	101000	235000	511010	2,158.17
	Health	Child Care Licensing	2020	101000	235000	511090	217.50
	Health	Child Care Licensing	2020	101000	235000	511330	164.54
	Health	Child Care Licensing	2020	101000	235000	530060	124.00
	Health	Child Care Licensing	2020	101000	235000	540040	119.00
	Health	Child Care Licensing	2020	101000	235000	540170	1,369.01
	Health	Child Care Licensing	2020	101000	235000	540300	4,796.00
	Health	Child Care Licensing	2020	101000	235000	570210	5,115.09
	Health	Anchorage Safety Center/Patrol	2020	101000	236000	501010	18,312.28
	Health	Anchorage Safety Center/Patrol	2020	101000	236000	501020	2,677.76
	Health	Anchorage Safety Center/Patrol	2020	101000	236000	501040	2,308.90
	Health	Anchorage Safety Center/Patrol	2020	101000	236000	501080	5,160.77
	Health	Anchorage Safety Center/Patrol	2020	101000	236000	501090	16.39
	Health	Anchorage Safety Center/Patrol	2020	101000	236000	501100	7,628.60
	Health	Anchorage Safety Center/Patrol	2020	101000	236000	501105	1,766.85
	Health	Anchorage Safety Center/Patrol	2020	101000	236000	501115	7.87
	Health	Anchorage Safety Center/Patrol	2020	101000	236000	501130	46.14
	Health	Anchorage Safety Center/Patrol	2020	101000	236000	501140	25.17
	Health	Anchorage Safety Center/Patrol	2020	101000	236000	511000	27,562.59
	Health	Anchorage Safety Center/Patrol	2020	101000	236000	530380	1,927,921.23
	Health	Anchorage Safety Center/Patrol	2020	101000	236000	540100	3,448.69
	Health	Anchorage Safety Center/Patrol	2020	101000	236000	540110	56,206.42
	Health	Anchorage Safety Center/Patrol	2020	101000	236000	540170	4,018.21
	Health	Anchorage Safety Center/Patrol	2020	101000	236000	540260	35.83
	Health	Anchorage Safety Center/Patrol	2020	101000	236000	540300	436.00
	Health	Anchorage Safety Center/Patrol	2020	101000	236000	550080	2,240.40
	Health	Anchorage Safety Center/Patrol	2020	101000	236000	580530	149,352.06
	Health	Women, Infants & Children	2020	101000	238000	501010	38,181.57
	Health	Women, Infants & Children	2020	101000	238000	501020	1,041.72
	Health	Women, Infants & Children	2020	101000	238000	501040	6,749.68
	Health	Women, Infants & Children	2020	101000	238000	501080	9,149.59
	Health	Women, Infants & Children	2020	101000	238000	501090	18.11
	Health	Women, Infants & Children	2020	101000	238000	501100	11,741.03
	Health	Women, Infants & Children	2020	101000	238000	501105	3,298.84
	Health	Women, Infants & Children	2020	101000	238000	501115	9.85
	Health	Women, Infants & Children	2020	101000	238000	501130	91.40

CSP Cat.	Department	Cost Center Description	Fiscal		Cost		Health Actuals
			Year	Fund	Center	Acct	
	Health	Women, Infants & Children	2020	101000	238000	501140	46.55
	Health	Anchorage Domestic Violence F	2020	101000	239000	501010	123,105.95
	Health	Anchorage Domestic Violence F	2020	101000	239000	501020	1,846.38
	Health	Anchorage Domestic Violence F	2020	101000	239000	501040	12,893.94
	Health	Anchorage Domestic Violence F	2020	101000	239000	501080	32,665.56
	Health	Anchorage Domestic Violence F	2020	101000	239000	501090	158.39
	Health	Anchorage Domestic Violence F	2020	101000	239000	501100	32,892.23
	Health	Anchorage Domestic Violence F	2020	101000	239000	501105	5,275.97
	Health	Anchorage Domestic Violence F	2020	101000	239000	501115	35.52
	Health	Anchorage Domestic Violence F	2020	101000	239000	501118	47.50
	Health	Anchorage Domestic Violence F	2020	101000	239000	501130	385.34
	Health	Anchorage Domestic Violence F	2020	101000	239000	501140	118.79
	Health	Anchorage Domestic Violence F	2020	101000	239000	501240	128.11
	Health	Anchorage Domestic Violence F	2020	101000	239000	530060	36.50
	Health	Anchorage Domestic Violence F	2020	101000	239000	540050	141.67
	Health	Anchorage Domestic Violence F	2020	101000	239000	540110	186,623.58
	Health	Anchorage Domestic Violence F	2020	101000	239000	540170	100.35
	Health	AHD Emergency Preparedness	2020	101000	240500	501010	54,018.52
	Health	AHD Emergency Preparedness	2020	101000	240500	501020	349.97
	Health	AHD Emergency Preparedness	2020	101000	240500	501040	666.79
	Health	AHD Emergency Preparedness	2020	101000	240500	501080	12,087.99
	Health	AHD Emergency Preparedness	2020	101000	240500	501090	19.41
	Health	AHD Emergency Preparedness	2020	101000	240500	501100	5,831.65
	Health	AHD Emergency Preparedness	2020	101000	240500	501105	4,238.72
	Health	AHD Emergency Preparedness	2020	101000	240500	501115	12.21
	Health	AHD Emergency Preparedness	2020	101000	240500	501130	107.99
	Health	AHD Emergency Preparedness	2020	101000	240500	501140	57.54
	Health	AHD Emergency Preparedness	2020	101000	240500	511000	758.03
	Health	AHD Emergency Preparedness	2020	101000	240500	520040	715.97
	Health	AHD Emergency Preparedness	2020	101000	240500	530060	26.00
	Health	Human Services Division	2020	101000	241000	501010	145,301.57
	Health	Human Services Division	2020	101000	241000	501020	895.90
	Health	Human Services Division	2020	101000	241000	501040	18,930.92
	Health	Human Services Division	2020	101000	241000	501080	31,878.69
	Health	Human Services Division	2020	101000	241000	501090	61.58
	Health	Human Services Division	2020	101000	241000	501100	54,005.56
	Health	Human Services Division	2020	101000	241000	501105	12,388.55
	Health	Human Services Division	2020	101000	241000	501115	32.45
	Health	Human Services Division	2020	101000	241000	501130	325.39
	Health	Human Services Division	2020	101000	241000	501140	191.65
	Health	Human Services Division	2020	101000	241000	511000	308.37
	Health	Human Services Division	2020	101000	241000	511010	23.43
	Health	Human Services Division	2020	101000	241000	511090	549.99
	Health	Human Services Division	2020	101000	241000	511330	1,144.17
	Health	Human Services Division	2020	101000	241000	511360	275.08
	Health	Human Services Division	2020	101000	241000	530380	10,091.75
	Health	Human Services Division	2020	101000	241000	540050	195.00
	Health	Human Services Division	2020	101000	241000	540110	424,336.00
	Health	Human Services Division	2020	101000	241000	540170	1,500.60
	Health	Human Services Division	2020	101000	241000	540640	15,749.59
	Health	Human Services Division	2020	101000	241000	580530	330,045.25
	Health	Community Safety & Development	2020	101000	242000	501040	66.34
	Health	Community Safety & Development	2020	101000	242000	540100	2,500,000.00
	Health	Community Safety & Development	2020	101000	242000	570230	8,894.00
	Health	Homelessness	2020	101000	244000	501010	6,723.84
	Health	Homelessness	2020	101000	244000	501080	1,348.20
	Health	Homelessness	2020	101000	244000	501090	5.36
	Health	Homelessness	2020	101000	244000	501100	525.00
	Health	Homelessness	2020	101000	244000	501105	535.45
	Health	Homelessness	2020	101000	244000	501115	1.98
	Health	Homelessness	2020	101000	244000	501130	11.20
	Health	Homelessness	2020	101000	244000	501140	8.19

CSP Cat.	Department	Cost Center Description	Fiscal		Cost		Health Actuals
			Year	Fund	Center	Acct	
	Health	Homelessness	2020	101000	244000	511000	5,670.18
	Health	Homelessness	2020	101000	244000	511090	4,292.00
	Health	Homelessness	2020	101000	244000	530060	220.75
	Health	Homelessness	2020	101000	244000	530360	654.00
	Health	Homelessness	2020	101000	244000	540100	2,400,000.00
	Health	Homelessness	2020	101000	244000	570210	4,177.82
	Health	Community Health Nursing	2020	101000	246000	501010	304,295.02
	Health	Community Health Nursing	2020	101000	246000	501020	7,050.50
	Health	Community Health Nursing	2020	101000	246000	501040	44,855.82
	Health	Community Health Nursing	2020	101000	246000	501080	71,091.62
	Health	Community Health Nursing	2020	101000	246000	501090	198.66
	Health	Community Health Nursing	2020	101000	246000	501100	84,456.29
	Health	Community Health Nursing	2020	101000	246000	501105	26,805.63
	Health	Community Health Nursing	2020	101000	246000	501115	109.41
	Health	Community Health Nursing	2020	101000	246000	501130	697.55
	Health	Community Health Nursing	2020	101000	246000	501140	422.24
	Health	Community Health Nursing	2020	101000	246000	511000	25,238.40
	Health	Community Health Nursing	2020	101000	246000	511090	1,873.65
	Health	Community Health Nursing	2020	101000	246000	511330	(20.68)
	Health	Community Health Nursing	2020	101000	246000	511340	36.64
	Health	Community Health Nursing	2020	101000	246000	511360	361.49
	Health	Community Health Nursing	2020	101000	246000	530020	1,094.08
	Health	Community Health Nursing	2020	101000	246000	530060	563.75
	Health	Community Health Nursing	2020	101000	246000	530360	256.00
	Health	Community Health Nursing	2020	101000	246000	530380	5,953.00
	Health	Community Health Nursing	2020	101000	246000	540010	1,407.09
	Health	Community Health Nursing	2020	101000	246000	540040	900.00
	Health	Community Health Nursing	2020	101000	246000	540150	1,116.00
	Health	Community Health Nursing	2020	101000	246000	540170	6,663.40
	Health	Community Health Nursing	2020	101000	246000	540200	51,596.68
	Health	Community Health Nursing	2020	101000	246000	540300	19,344.00
	Health	Community Health Nursing	2020	101000	246000	540610	41.34
	Health	Community Health Nursing	2020	101000	246000	540640	18,442.32
	Health	Community Health Nursing	2020	101000	246000	570210	1,275.37
	Health	Environmental Health Services	2020	101000	256000	501010	734,893.88
	Health	Environmental Health Services	2020	101000	256000	501020	14,988.96
	Health	Environmental Health Services	2020	101000	256000	501040	57,309.03
	Health	Environmental Health Services	2020	101000	256000	501080	174,966.09
	Health	Environmental Health Services	2020	101000	256000	501090	448.84
	Health	Environmental Health Services	2020	101000	256000	501100	236,022.68
	Health	Environmental Health Services	2020	101000	256000	501105	59,114.47
	Health	Environmental Health Services	2020	101000	256000	501115	243.30
	Health	Environmental Health Services	2020	101000	256000	501130	1,588.22
	Health	Environmental Health Services	2020	101000	256000	501140	1,012.21
	Health	Environmental Health Services	2020	101000	256000	511000	5,982.73
	Health	Environmental Health Services	2020	101000	256000	511010	2,596.51
	Health	Environmental Health Services	2020	101000	256000	511050	200.00
	Health	Environmental Health Services	2020	101000	256000	511090	498.80
	Health	Environmental Health Services	2020	101000	256000	511140	30.00
	Health	Environmental Health Services	2020	101000	256000	511330	1,392.14
	Health	Environmental Health Services	2020	101000	256000	530020	187.16
	Health	Environmental Health Services	2020	101000	256000	530060	49.75
	Health	Environmental Health Services	2020	101000	256000	530360	547.00
	Health	Environmental Health Services	2020	101000	256000	540010	6,007.21
	Health	Environmental Health Services	2020	101000	256000	540050	843.06
	Health	Environmental Health Services	2020	101000	256000	540170	5,691.99
	Health	Environmental Health Services	2020	101000	256000	540200	17,217.99
	Health	Environmental Health Services	2020	101000	256000	540260	26,000.00
	Health	Environmental Health Services	2020	101000	256000	540271	136.70
	Health	Environmental Health Services	2020	101000	256000	540300	18,276.00
	Health	Environmental Health Services	2020	101000	256000	540640	1,209.60
	Health	Environmental Health Services	2020	101000	256000	570210	12,139.37

CSP Cat.	Department	Cost Center Description	Fiscal		Cost		Health Actuals
			Year	Fund	Center	Acct	
	Health	Environmental Health Services	2020	101000	256000	580530	506.00
	Health	Anchorage Memorial Cemetery	2020	101000	271000	501010	81,183.43
	Health	Anchorage Memorial Cemetery	2020	101000	271000	501040	6,579.39
	Health	Anchorage Memorial Cemetery	2020	101000	271000	501080	16,965.77
	Health	Anchorage Memorial Cemetery	2020	101000	271000	501090	43.79
	Health	Anchorage Memorial Cemetery	2020	101000	271000	501100	24,655.47
	Health	Anchorage Memorial Cemetery	2020	101000	271000	501105	6,528.38
	Health	Anchorage Memorial Cemetery	2020	101000	271000	501115	23.76
	Health	Anchorage Memorial Cemetery	2020	101000	271000	501130	173.61
	Health	Anchorage Memorial Cemetery	2020	101000	271000	501140	104.07
	Health	Anchorage Memorial Cemetery	2020	101000	271000	511000	25,370.52
	Health	Anchorage Memorial Cemetery	2020	101000	271000	511010	556.12
	Health	Anchorage Memorial Cemetery	2020	101000	271000	511160	52.32
	Health	Anchorage Memorial Cemetery	2020	101000	271000	511170	2,969.22
	Health	Anchorage Memorial Cemetery	2020	101000	271000	511380	3,587.77
	Health	Anchorage Memorial Cemetery	2020	101000	271000	520040	553.91
	Health	Anchorage Memorial Cemetery	2020	101000	271000	530060	27.00
	Health	Anchorage Memorial Cemetery	2020	101000	271000	530360	14,801.85
	Health	Anchorage Memorial Cemetery	2020	101000	271000	540040	454.00
	Health	Anchorage Memorial Cemetery	2020	101000	271000	540150	421.97
	Health	Anchorage Memorial Cemetery	2020	101000	271000	540170	1,170.69
	Health	Anchorage Memorial Cemetery	2020	101000	271000	540280	1,006.00
	Health	Anchorage Memorial Cemetery	2020	101000	271000	540300	6,828.00
	Health	Anchorage Memorial Cemetery	2020	101000	271000	540440	56.95
	Health	Anchorage Memorial Cemetery	2020	101000	271000	540610	1,141.76
	Health	Anchorage Memorial Cemetery	2020	101000	271000	540640	145,995.03
	Health	Anchorage Memorial Cemetery	2020	101000	271000	550080	18,881.64
	Health	Anchorage Memorial Cemetery	2020	101000	271000	570200	11,509.48
	Health	Anchorage Memorial Cemetery	2020	101000	271000	580010	46,873.31
	Health	Anchorage Memorial Cemetery	2020	101000	271000	580020	21,873.10
	Health	Anchorage Memorial Cemetery	2020	101000	271000	580030	0.40
	Health	Anchorage Memorial Cemetery	2020	101000	271000	580140	62.74
	Health	Anchorage Memorial Cemetery	2020	101000	271000	590200	3,500.00
	Health	SART Program	2020	101000	272000	530380	349,577.00
	Health	AHD Grants and Contracts	2020	231800	224000	540110	241,163.49
	Health	AHD Grants and Contracts	2020	231900	224000	540110	774,156.50
	Health	Public Health Division	2020	231900	232000	501010	362,120.35
	Health	Public Health Division	2020	231900	232000	501020	9,456.85
	Health	Public Health Division	2020	231900	232000	501040	21,264.79
	Health	Public Health Division	2020	231900	232000	501080	89,537.93
	Health	Public Health Division	2020	231900	232000	501090	318.82
	Health	Public Health Division	2020	231900	232000	501100	119,777.94
	Health	Public Health Division	2020	231900	232000	501105	30,550.47
	Health	Public Health Division	2020	231900	232000	501115	172.18
	Health	Public Health Division	2020	231900	232000	501130	784.60
	Health	Public Health Division	2020	231900	232000	501140	535.32
	Health	Public Health Division	2020	231900	232000	501240	0.61
	Health	Public Health Division	2020	231900	232000	511000	5,094.56
	Health	Public Health Division	2020	231900	232000	511010	9,470.10
	Health	Public Health Division	2020	231900	232000	511080	785.00
	Health	Public Health Division	2020	231900	232000	511090	10,183.03
	Health	Public Health Division	2020	231900	232000	520040	570.89
	Health	Public Health Division	2020	231900	232000	520050	44.64
	Health	Public Health Division	2020	231900	232000	520060	810.87
	Health	Public Health Division	2020	231900	232000	520070	264.00
	Health	Public Health Division	2020	231900	232000	520080	625.00
	Health	Public Health Division	2020	231900	232000	530360	2,086.00
	Health	Public Health Division	2020	231900	232000	540040	192.00
	Health	Public Health Division	2020	231900	232000	540050	30.00
	Health	Public Health Division	2020	231900	232000	540070	193.00
	Health	Public Health Division	2020	231900	232000	540150	384.80
	Health	Public Health Division	2020	231900	232000	540170	5,387.89

CSP Cat.	Department	Cost Center Description	Fiscal		Cost		Health Actuals
			Year	Fund	Center	Acct	
	Health	Public Health Division	2020	231900	232000	540220	128.64
	Health	Public Health Division	2020	231900	232000	540640	35,538.45
	Health	Senior Svcs & Emerg. Outreach	2020	231900	233000	501010	348,323.37
	Health	Senior Svcs & Emerg. Outreach	2020	231900	233000	501020	7,690.15
	Health	Senior Svcs & Emerg. Outreach	2020	231900	233000	501040	11,521.96
	Health	Senior Svcs & Emerg. Outreach	2020	231900	233000	501080	79,637.19
	Health	Senior Svcs & Emerg. Outreach	2020	231900	233000	501090	265.54
	Health	Senior Svcs & Emerg. Outreach	2020	231900	233000	501100	149,594.50
	Health	Senior Svcs & Emerg. Outreach	2020	231900	233000	501105	27,161.15
	Health	Senior Svcs & Emerg. Outreach	2020	231900	233000	501115	142.49
	Health	Senior Svcs & Emerg. Outreach	2020	231900	233000	501130	723.72
	Health	Senior Svcs & Emerg. Outreach	2020	231900	233000	501140	479.36
	Health	Senior Svcs & Emerg. Outreach	2020	231900	233000	511000	1,784.76
	Health	Senior Svcs & Emerg. Outreach	2020	231900	233000	511010	3,094.35
	Health	Senior Svcs & Emerg. Outreach	2020	231900	233000	511090	7,657.42
	Health	Senior Svcs & Emerg. Outreach	2020	231900	233000	511380	892.08
	Health	Senior Svcs & Emerg. Outreach	2020	231900	233000	530060	48.25
	Health	Senior Svcs & Emerg. Outreach	2020	231900	233000	530380	8,363.01
	Health	Senior Svcs & Emerg. Outreach	2020	231900	233000	540040	1,382.00
	Health	Senior Svcs & Emerg. Outreach	2020	231900	233000	540050	1,327.50
	Health	Senior Svcs & Emerg. Outreach	2020	231900	233000	540150	2,309.19
	Health	Senior Svcs & Emerg. Outreach	2020	231900	233000	540170	586.35
	Health	Senior Svcs & Emerg. Outreach	2020	231900	233000	540220	3.45
	Health	Child Care Licensing	2020	231900	235000	501010	727,638.65
	Health	Child Care Licensing	2020	231900	235000	501020	45,273.47
	Health	Child Care Licensing	2020	231900	235000	501040	43,176.01
	Health	Child Care Licensing	2020	231900	235000	501080	176,287.35
	Health	Child Care Licensing	2020	231900	235000	501090	464.14
	Health	Child Care Licensing	2020	231900	235000	501100	239,575.72
	Health	Child Care Licensing	2020	231900	235000	501105	60,308.50
	Health	Child Care Licensing	2020	231900	235000	501115	248.77
	Health	Child Care Licensing	2020	231900	235000	501130	1,602.67
	Health	Child Care Licensing	2020	231900	235000	501140	1,030.22
	Health	Child Care Licensing	2020	231900	235000	511000	3,732.71
	Health	Child Care Licensing	2020	231900	235000	511010	10,494.60
	Health	Child Care Licensing	2020	231900	235000	511360	522.85
	Health	Child Care Licensing	2020	231900	235000	530360	102.83
	Health	Child Care Licensing	2020	231900	235000	540040	2,230.00
	Health	Child Care Licensing	2020	231900	235000	540050	2,665.00
	Health	Child Care Licensing	2020	231900	235000	540110	10,500,000.00
	Health	Child Care Licensing	2020	231900	235000	540170	7,135.20
	Health	Child Care Licensing	2020	231900	235000	570210	1,402.09
	Health	Anchorage Safety Center/Patrol	2020	231900	236000	501010	91,830.07
	Health	Anchorage Safety Center/Patrol	2020	231900	236000	501020	14,195.60
	Health	Anchorage Safety Center/Patrol	2020	231900	236000	501040	4,194.00
	Health	Anchorage Safety Center/Patrol	2020	231900	236000	501080	24,248.30
	Health	Anchorage Safety Center/Patrol	2020	231900	236000	501090	48.01
	Health	Anchorage Safety Center/Patrol	2020	231900	236000	501100	29,681.76
	Health	Anchorage Safety Center/Patrol	2020	231900	236000	501105	8,217.61
	Health	Anchorage Safety Center/Patrol	2020	231900	236000	501115	26.67
	Health	Anchorage Safety Center/Patrol	2020	231900	236000	501130	220.43
	Health	Anchorage Safety Center/Patrol	2020	231900	236000	501140	125.26
	Health	Anchorage Safety Center/Patrol	2020	231900	236000	511000	169.83
	Health	Anchorage Safety Center/Patrol	2020	231900	236000	511010	127.02
	Health	Anchorage Safety Center/Patrol	2020	231900	236000	511140	5.00
	Health	Anchorage Safety Center/Patrol	2020	231900	236000	511340	165.73
	Health	Anchorage Safety Center/Patrol	2020	231900	236000	520040	(2,147.91)
	Health	Anchorage Safety Center/Patrol	2020	231900	236000	520080	(1,855.00)
	Health	Anchorage Safety Center/Patrol	2020	231900	236000	530360	8,780.87
	Health	Anchorage Safety Center/Patrol	2020	231900	236000	540170	3,841.13
	Health	Anchorage Safety Center/Patrol	2020	231900	236000	540280	6,495.00
	Health	Anchorage Safety Center/Patrol	2020	231900	236000	540300	4,896.00

CSP Cat.	Department	Cost Center Description	Fiscal		Cost		Health Actuals
			Year	Fund	Center	Acct	
	Health	Anchorage Safety Center/Patrol	2020	231900	236000	540650	50.00
	Health	Anchorage Safety Center/Patrol	2020	231900	236000	550010	476.82
	Health	Anchorage Safety Center/Patrol	2020	231900	236000	570210	7,402.05
	Health	Women, Infants & Children	2020	231900	238000	501010	343,888.29
	Health	Women, Infants & Children	2020	231900	238000	501020	7,636.94
	Health	Women, Infants & Children	2020	231900	238000	501040	33,833.28
	Health	Women, Infants & Children	2020	231900	238000	501080	84,310.13
	Health	Women, Infants & Children	2020	231900	238000	501090	301.80
	Health	Women, Infants & Children	2020	231900	238000	501100	102,107.48
	Health	Women, Infants & Children	2020	231900	238000	501105	29,584.98
	Health	Women, Infants & Children	2020	231900	238000	501115	162.25
	Health	Women, Infants & Children	2020	231900	238000	501130	741.28
	Health	Women, Infants & Children	2020	231900	238000	501140	482.25
	Health	Women, Infants & Children	2020	231900	238000	511000	2,343.02
	Health	Women, Infants & Children	2020	231900	238000	511010	4,620.21
	Health	Women, Infants & Children	2020	231900	238000	511090	217.50
	Health	Women, Infants & Children	2020	231900	238000	530360	3,886.00
	Health	Women, Infants & Children	2020	231900	238000	530380	116.00
	Health	Women, Infants & Children	2020	231900	238000	540040	200.00
	Health	Women, Infants & Children	2020	231900	238000	540050	190.00
	Health	Women, Infants & Children	2020	231900	238000	540150	212.05
	Health	Women, Infants & Children	2020	231900	238000	540170	9,386.70
	Health	Women, Infants & Children	2020	231900	238000	540220	338.76
	Health	Women, Infants & Children	2020	231900	238000	540271	323.91
	Health	Women, Infants & Children	2020	231900	238000	540610	34.07
	Health	Women, Infants & Children	2020	231900	238000	540640	34,074.22
	Health	Women, Infants & Children	2020	231900	238000	570210	2,550.74
	Health	Women, Infants & Children	2020	231900	238000	570230	4,985.00
	Health	Women, Infants & Children	2020	231900	238000	590230	2,645.00
	Health	AHD Emergency Preparedness	2020	231900	240500	501010	339,404.15
	Health	AHD Emergency Preparedness	2020	231900	240500	501020	46,453.45
	Health	AHD Emergency Preparedness	2020	231900	240500	501040	3,387.34
	Health	AHD Emergency Preparedness	2020	231900	240500	501080	82,183.22
	Health	AHD Emergency Preparedness	2020	231900	240500	501090	185.58
	Health	AHD Emergency Preparedness	2020	231900	240500	501100	92,177.02
	Health	AHD Emergency Preparedness	2020	231900	240500	501105	29,329.52
	Health	AHD Emergency Preparedness	2020	231900	240500	501115	96.51
	Health	AHD Emergency Preparedness	2020	231900	240500	501130	765.72
	Health	AHD Emergency Preparedness	2020	231900	240500	501140	396.24
	Health	AHD Emergency Preparedness	2020	231900	240500	511000	32,101.85
	Health	AHD Emergency Preparedness	2020	231900	240500	511010	765.17
	Health	AHD Emergency Preparedness	2020	231900	240500	511330	(70.00)
	Health	AHD Emergency Preparedness	2020	231900	240500	511340	57.55
	Health	AHD Emergency Preparedness	2020	231900	240500	511380	318.45
	Health	AHD Emergency Preparedness	2020	231900	240500	530360	739.00
	Health	AHD Emergency Preparedness	2020	231900	240500	530380	521,601.61
	Health	AHD Emergency Preparedness	2020	231900	240500	540170	4,458.86
	Health	AHD Emergency Preparedness	2020	231900	240500	540280	246,495.00
	Health	AHD Emergency Preparedness	2020	231900	240500	540300	4,896.00
	Health	AHD Emergency Preparedness	2020	231900	240500	540640	269,323.61
	Health	AHD Emergency Preparedness	2020	231900	240500	540650	110.00
	Health	AHD Emergency Preparedness	2020	231900	240500	570210	70,430.02
	Health	AHD Emergency Preparedness	2020	231900	240500	570230	27,054.00
	Health	AHD Emergency Preparedness	2020	231900	240500	590210	765.74
	Health	Human Services Division	2020	231900	241000	501010	(29.05)
	Health	Human Services Division	2020	231900	241000	501080	(6.39)
	Health	Human Services Division	2020	231900	241000	501090	(0.01)
	Health	Human Services Division	2020	231900	241000	501100	(8.02)
	Health	Human Services Division	2020	231900	241000	501105	(67.54)
	Health	Human Services Division	2020	231900	241000	501115	(0.02)
	Health	Human Services Division	2020	231900	241000	501130	(1.76)
	Health	Human Services Division	2020	231900	241000	501140	(0.08)

CSP Cat.	Department	Cost Center Description	Fiscal		Cost		Health Actuals
			Year	Fund	Center	Acct	
	Health	Human Services Division	2020	231900	241000	530380	36,624.00
	Health	Human Services Division	2020	231900	241000	540110	3,150.00
	Health	Community Safety & Development	2020	231900	242000	501010	12,929.70
	Health	Community Safety & Development	2020	231900	242000	501020	92.56
	Health	Community Safety & Development	2020	231900	242000	501040	4,398.96
	Health	Community Safety & Development	2020	231900	242000	501080	3,281.11
	Health	Community Safety & Development	2020	231900	242000	501090	7.26
	Health	Community Safety & Development	2020	231900	242000	501100	4,125.90
	Health	Community Safety & Development	2020	231900	242000	501105	1,402.29
	Health	Community Safety & Development	2020	231900	242000	501115	3.68
	Health	Community Safety & Development	2020	231900	242000	501130	37.29
	Health	Community Safety & Development	2020	231900	242000	501140	18.29
	Health	Disease Prevention & Control	2020	231900	245000	501010	687,002.19
	Health	Disease Prevention & Control	2020	231900	245000	501020	27,472.67
	Health	Disease Prevention & Control	2020	231900	245000	501040	43,731.77
	Health	Disease Prevention & Control	2020	231900	245000	501080	167,898.58
	Health	Disease Prevention & Control	2020	231900	245000	501090	512.88
	Health	Disease Prevention & Control	2020	231900	245000	501100	251,645.43
	Health	Disease Prevention & Control	2020	231900	245000	501105	57,673.51
	Health	Disease Prevention & Control	2020	231900	245000	501115	275.68
	Health	Disease Prevention & Control	2020	231900	245000	501130	1,515.62
	Health	Disease Prevention & Control	2020	231900	245000	501140	1,004.83
	Health	Disease Prevention & Control	2020	231900	245000	511000	72,745.70
	Health	Disease Prevention & Control	2020	231900	245000	511010	1,790.95
	Health	Disease Prevention & Control	2020	231900	245000	511080	108.71
	Health	Disease Prevention & Control	2020	231900	245000	511330	145.08
	Health	Disease Prevention & Control	2020	231900	245000	520040	630.80
	Health	Disease Prevention & Control	2020	231900	245000	520060	(425.40)
	Health	Disease Prevention & Control	2020	231900	245000	520080	425.00
	Health	Disease Prevention & Control	2020	231900	245000	540040	342.00
	Health	Disease Prevention & Control	2020	231900	245000	540050	1,350.00
	Health	Disease Prevention & Control	2020	231900	245000	540170	1,349.86
	Health	Disease Prevention & Control	2020	231900	245000	540200	(33.00)
	Health	Disease Prevention & Control	2020	231900	245000	540220	14.50
	Health	Disease Prevention & Control	2020	231900	245000	540280	8,656.00
	Health	Disease Prevention & Control	2020	231900	245000	540610	6.87
	Health	Disease Prevention & Control	2020	231900	245000	540640	33,898.67
	Health	Community Health Nursing	2020	231900	246000	501010	842,608.01
	Health	Community Health Nursing	2020	231900	246000	501020	96,843.91
	Health	Community Health Nursing	2020	231900	246000	501040	59,423.28
	Health	Community Health Nursing	2020	231900	246000	501080	215,767.30
	Health	Community Health Nursing	2020	231900	246000	501090	582.97
	Health	Community Health Nursing	2020	231900	246000	501100	249,551.92
	Health	Community Health Nursing	2020	231900	246000	501105	75,596.64
	Health	Community Health Nursing	2020	231900	246000	501115	313.77
	Health	Community Health Nursing	2020	231900	246000	501130	1,941.24
	Health	Community Health Nursing	2020	231900	246000	501140	1,190.76
	Health	Community Health Nursing	2020	231900	246000	511000	111,068.05
	Health	Community Health Nursing	2020	231900	246000	511010	422.23
	Health	Community Health Nursing	2020	231900	246000	511050	654.00
	Health	Community Health Nursing	2020	231900	246000	511090	85.00
	Health	Community Health Nursing	2020	231900	246000	511330	(15.66)
	Health	Community Health Nursing	2020	231900	246000	511360	716.30
	Health	Community Health Nursing	2020	231900	246000	520040	645.92
	Health	Community Health Nursing	2020	231900	246000	520060	425.40
	Health	Community Health Nursing	2020	231900	246000	520080	75.00
	Health	Community Health Nursing	2020	231900	246000	540050	1,410.00
	Health	Community Health Nursing	2020	231900	246000	540170	2,677.91
	Health	Community Health Nursing	2020	231900	246000	540220	59.70
	Health	Community Health Nursing	2020	231900	246000	540271	19.98
	Health	Community Health Nursing	2020	231900	246000	540280	580.00
	Health	Community Health Nursing	2020	231900	246000	540640	29,259.48

Direct Expenditures

Health

CSP Cat.	Department	Cost Center Description	Fiscal		Cost		Health Actuals
			Year	Fund	Center	Acct	
	Health	Community Health Nursing	2020	231900	246000	570210	3,730.08
	Health	Community Health Nursing	2020	231900	246000	590210	416.02
	Health	Environmental Health Services	2020	231900	256000	501010	46,512.39
	Health	Environmental Health Services	2020	231900	256000	501020	(598.45)
	Health	Environmental Health Services	2020	231900	256000	501040	3,214.69
	Health	Environmental Health Services	2020	231900	256000	501080	10,605.03
	Health	Environmental Health Services	2020	231900	256000	501090	30.60
	Health	Environmental Health Services	2020	231900	256000	501100	17,649.04
	Health	Environmental Health Services	2020	231900	256000	501105	3,626.07
	Health	Environmental Health Services	2020	231900	256000	501115	16.70
	Health	Environmental Health Services	2020	231900	256000	501130	96.42
	Health	Environmental Health Services	2020	231900	256000	501140	68.06
	Health	Environmental Health Services	2020	231900	256000	511000	9,204.72
	Health	Environmental Health Services	2020	231900	256000	530380	69,746.63
	Health	Environmental Health Services	2020	231900	256000	540150	107,161.62
	Health	Environmental Health Services	2020	231900	256000	540640	10,000.00
	Health	Community Safety & Development	2020	241800	242000	501010	71,860.71
	Health	Community Safety & Development	2020	241800	242000	501020	384.16
	Health	Community Safety & Development	2020	241800	242000	501040	27,486.96
	Health	Community Safety & Development	2020	241800	242000	501080	17,808.81
	Health	Community Safety & Development	2020	241800	242000	501090	40.32
	Health	Community Safety & Development	2020	241800	242000	501100	23,550.31
	Health	Community Safety & Development	2020	241800	242000	501105	7,619.89
	Health	Community Safety & Development	2020	241800	242000	501115	22.36
	Health	Community Safety & Development	2020	241800	242000	501130	238.59
	Health	Community Safety & Development	2020	241800	242000	501140	105.57
	Health	Community Safety & Development	2020	241800	242000	511000	77.94
	Health	Community Safety & Development	2020	241800	242000	511010	148.33
	Health	Community Safety & Development	2020	241800	242000	540050	141.67
	Health	Community Safety & Development	2020	241800	242000	540150	789.35
	Health	Community Safety & Development	2020	241900	242000	501010	215,088.54
	Health	Community Safety & Development	2020	241900	242000	501020	2,275.40
	Health	Community Safety & Development	2020	241900	242000	501040	19,734.34
	Health	Community Safety & Development	2020	241900	242000	501080	46,689.20
	Health	Community Safety & Development	2020	241900	242000	501090	118.68
	Health	Community Safety & Development	2020	241900	242000	501100	65,706.22
	Health	Community Safety & Development	2020	241900	242000	501105	17,783.26
	Health	Community Safety & Development	2020	241900	242000	501115	62.23
	Health	Community Safety & Development	2020	241900	242000	501130	439.90
	Health	Community Safety & Development	2020	241900	242000	501140	283.60
	Health	Community Safety & Development	2020	241900	242000	511010	2,198.84
	Health	Community Safety & Development	2020	241900	242000	511330	48.97
	Health	Community Safety & Development	2020	241900	242000	530380	72,785.00
	Health	Community Safety & Development	2020	241900	242000	540050	141.66
	Health	Community Safety & Development	2020	241900	242000	540110	816,227.05
	Health	Community Safety & Development	2020	241900	242000	540150	1,307.25
	Health	Community Safety & Development	2020	241900	242000	540170	462.43
	Health	Community Safety & Development	2020	241900	242000	540280	91,562.80
	Health	Community Safety & Development	2020	241900	242000	540300	2,940.00
	Health	Environmental Health Services	2020	241900	256000	540150	3,000.00
	Health	Administration Division Support	2020	261010	221000	540640	30,000.00
	Health	AHD Grants and Contracts	2020	261010	224000	511000	114.85
	Health	AHD Grants and Contracts	2020	261010	224000	540070	235.00
	Health	AHD Grants and Contracts	2020	261010	224000	540110	23,513.01
	Health	AHD Grants and Contracts	2020	261010	224000	540170	65.87
	Health	AHD Grants and Contracts	2020	261010	224000	540640	395,887.10
	Health	Animal Care & Control	2020	261010	225000	511000	2,807.61
	Health	Public Health Division	2020	261010	232000	540070	9,500.00
	Health	Administration Division Support	2020	401100	221000	501010	13,473.35
	Health	Administration Division Support	2020	401100	221000	501080	2,775.52
	Health	Administration Division Support	2020	401100	221000	501090	6.06
	Health	Administration Division Support	2020	401100	221000	501100	3,107.36

CSP Cat.	Department	Cost Center Description	Fiscal		Cost		Health Actuals
			Year	Fund	Center	Acct	
Health		Administration Division Support	2020	401100	221000	501105	992.80
Health		Administration Division Support	2020	401100	221000	501115	3.01
Health		Administration Division Support	2020	401100	221000	501130	25.71
Health		Administration Division Support	2020	401100	221000	501140	15.87
Health		Administration Division Support	2020	401100	221000	530375	11,055.00
Health		Administration Division Support	2020	401100	221000	530380	82,921.97
Health		Administration Division Support	2020	401100	221000	540380	6,435.00
Health		Administration Division Support	2020	401100	221000	540400	20,277.92
Health		Administration Division Support	2020	401100	221000	540640	120,743.10
Health		Administration Division Support	2020	401100	221000	570200	9,806.23
Health		Administration Division Support	2020	401100	221000	590200	3,667.64
Health		Animal Care & Control	2020	401100	225000	501010	44.54
Health		Animal Care & Control	2020	401100	225000	501080	10.28
Health		Animal Care & Control	2020	401100	225000	501090	0.02
Health		Animal Care & Control	2020	401100	225000	501100	2.19
Health		Animal Care & Control	2020	401100	225000	501105	3.58
Health		Animal Care & Control	2020	401100	225000	501130	0.09
Health		Animal Care & Control	2020	401100	225000	540400	6,875.45
Health		Senior Svcs & Emerg. Outreach	2020	401100	233000	501010	1,380.74
Health		Senior Svcs & Emerg. Outreach	2020	401100	233000	501080	317.72
Health		Senior Svcs & Emerg. Outreach	2020	401100	233000	501090	0.65
Health		Senior Svcs & Emerg. Outreach	2020	401100	233000	501100	63.43
Health		Senior Svcs & Emerg. Outreach	2020	401100	233000	501105	112.49
Health		Senior Svcs & Emerg. Outreach	2020	401100	233000	501115	0.35
Health		Senior Svcs & Emerg. Outreach	2020	401100	233000	501130	2.77
Health		Senior Svcs & Emerg. Outreach	2020	401100	233000	501140	1.89
Health		Senior Svcs & Emerg. Outreach	2020	401100	233000	530380	19,332.54
Health		Senior Svcs & Emerg. Outreach	2020	401100	233000	540400	1,871.63
Health		Senior Svcs & Emerg. Outreach	2020	401100	233000	540640	3,965.70
Health		Administration Division Support	2020	401800	221000	501010	2,227.00
Health		Administration Division Support	2020	401800	221000	501080	489.93
Health		Administration Division Support	2020	401800	221000	501090	1.14
Health		Administration Division Support	2020	401800	221000	501100	652.79
Health		Administration Division Support	2020	401800	221000	501105	170.34
Health		Administration Division Support	2020	401800	221000	501115	0.73
Health		Administration Division Support	2020	401800	221000	501130	4.45
Health		Administration Division Support	2020	401800	221000	501140	3.91
Health		Administration Division Support	2020	401800	221000	540400	59.75
Health		Administration Division Support	2020	401800	221000	540640	17,500.00
Health		Animal Care & Control	2020	401800	225000	501010	2,516.51
Health		Animal Care & Control	2020	401800	225000	501080	553.62
Health		Animal Care & Control	2020	401800	225000	501090	1.28
Health		Animal Care & Control	2020	401800	225000	501100	737.66
Health		Animal Care & Control	2020	401800	225000	501105	202.37
Health		Animal Care & Control	2020	401800	225000	501115	1.11
Health		Animal Care & Control	2020	401800	225000	501130	5.03
Health		Animal Care & Control	2020	401800	225000	501140	5.89
Health		Animal Care & Control	2020	401800	225000	530380	14,725.00
Health		Animal Care & Control	2020	401800	225000	540380	425.80
Health		Animal Care & Control	2020	401800	225000	540400	1,547.19
							<u>45,228,923.24</u>

CSP Cat.	Department	Cost Center Description	Fiscal		Cost		Actuals
			Year	Fund	Center	Acct	
Health	AHD Director's Office		2020	101000	211000	600020	14,719.34
Health	AHD Director's Office		2020	101000	211000	600030	7,896.32
Health	AHD Director's Office		2020	101000	211000	600050	14,753.04
Health	AHD Director's Office		2020	101000	211000	600060	10,361.18
Health	AHD Director's Office		2020	101000	211000	600080	19,391.47
Health	AHD Director's Office		2020	101000	211000	600090	17,711.18
Health	AHD Director's Office		2020	101000	211000	600120	878.38
Health	AHD Director's Office		2020	101000	211000	600140	913.53
Health	AHD Director's Office		2020	101000	211000	600150	22,696.27
Health	AHD Director's Office		2020	101000	211000	600160	107,581.03
Health	AHD Director's Office		2020	101000	211000	600180	159,602.59
Health	AHD Director's Office		2020	101000	211000	600190	4,505.18
Health	AHD Director's Office		2020	101000	211000	600200	364,150.97
Health	AHD Director's Office		2020	101000	211000	600220	6,831.11
Health	AHD Director's Office		2020	101000	211000	600240	106,979.99
Health	AHD Director's Office		2020	101000	211000	600280	29,827.56
Health	AHD Director's Office		2020	101000	211000	600290	51,464.44
Health	AHD Director's Office		2020	101000	211000	600300	104,125.93
Health	AHD Director's Office		2020	101000	211000	600320	21,967.84
Health	AHD Director's Office		2020	101000	211000	600330	5,684.09
Health	AHD Director's Office		2020	101000	211000	600360	71,805.15
Health	AHD Director's Office		2020	101000	211000	600370	5,423.86
Health	AHD Director's Office		2020	101000	211000	600430	31,011.89
Health	AHD Director's Office		2020	101000	211000	600540	63,371.93
Health	AHD Director's Office		2020	101000	211000	600570	9,539.01
Health	AHD Director's Office		2020	101000	211000	600580	37,478.61
Health	AHD Director's Office		2020	101000	211000	600610	21,713.21
Health	AHD Director's Office		2020	101000	211000	601080	3,223.93
Health	AHD Director's Office		2020	101000	211000	601090	1,186,999.93
Health	AHD Director's Office		2020	101000	211000	601580	300,555.55
Health	AHD Director's Office		2020	101000	211000	601590	259,805.42
Health	AHD Director's Office		2020	101000	211000	601600	113,422.17
Health	AHD Director's Office		2020	101000	211000	601840	4,546.65
Health	AHD Director's Office		2020	101000	211000	601850	6,980.73
Health	AHD Director's Office		2020	101000	211000	601880	123,594.72
Health	AHD Director's Office		2020	101000	211000	601890	229,617.45
Health	AHD Director's Office		2020	101000	211000	601900	2,390.21
Health	AHD Director's Office		2020	101000	211000	601910	10,141.18
Health	AHD Director's Office		2020	101000	211000	605530	346.64
Health	AHD Director's Office		2020	101000	211000	605540	4,728.60
Health	Medical Director		2020	101000	212000	605530	212.44
Health	Medical Director		2020	101000	212000	605540	1,658.58
Health	Administration Division Support		2020	101000	221000	600250	2,641.51
Health	Administration Division Support		2020	101000	221000	600670	(4,563.00)
Health	Administration Division Support		2020	101000	221000	601470	7,173.90
Health	Administration Division Support		2020	101000	221000	605530	571.16
Health	Administration Division Support		2020	101000	221000	605540	7,784.02
Health	Administration Division Support		2020	101000	221000	615200	0.01
Health	AHD Fiscal Support		2020	101000	222000	600680	(93,687.50)
Health	AHD Fiscal Support		2020	101000	222000	605530	340.51
Health	AHD Fiscal Support		2020	101000	222000	605540	4,643.70
Health	AHD Grants and Contracts		2020	101000	224000	605023	17,631.20
Health	AHD Grants and Contracts		2020	101000	224000	605530	550.57
Health	AHD Grants and Contracts		2020	101000	224000	605540	7,512.39
Health	Animal Care & Control		2020	101000	225000	600440	285.18
Health	Animal Care & Control		2020	101000	225000	600490	1,307.81
Health	Public Health Division		2020	101000	232000	600700	(28,415.94)
Health	Public Health Division		2020	101000	232000	600710	(25,289.64)
Health	Public Health Division		2020	101000	232000	600720	618.00
Health	Public Health Division		2020	101000	232000	601470	7,173.90
Health	Public Health Division		2020	101000	232000	605063	618.00
Health	Public Health Division		2020	101000	232000	605530	186.47

CSP Cat.	Department	Cost Center Description	Fiscal		Cost		Actuals
			Year	Fund	Center	Acct	
	Health	Public Health Division	2020	101000	232000	605540	2,543.84
	Health	Public Health Division	2020	101000	232000	615200	4,818.22
	Health	Senior Svcs & Emerg. Outreach	2020	101000	233000	605530	162.18
	Health	Senior Svcs & Emerg. Outreach	2020	101000	233000	605540	2,212.07
	Health	Child Care Licensing	2020	101000	235000	600700	(61,426.00)
	Health	Anchorage Safety Center/Patrol	2020	101000	236000	605530	40.94
	Health	Anchorage Safety Center/Patrol	2020	101000	236000	605540	551.00
	Health	Women, Infants & Children	2020	101000	238000	600700	(3,420.03)
	Health	Women, Infants & Children	2020	101000	238000	600910	13,215.15
	Health	Women, Infants & Children	2020	101000	238000	601020	7,670.83
	Health	Women, Infants & Children	2020	101000	238000	605530	92.47
	Health	Women, Infants & Children	2020	101000	238000	605540	918.32
	Health	Anchorage Domestic Violence F	2020	101000	239000	605530	682.48
	Health	Anchorage Domestic Violence F	2020	101000	239000	605540	4,188.47
	Health	AHD Emergency Preparedness	2020	101000	240500	605530	127.22
	Health	AHD Emergency Preparedness	2020	101000	240500	605540	1,418.37
	Health	Human Services Division	2020	101000	241000	600250	7,597.98
	Health	Human Services Division	2020	101000	241000	600710	(23,850.00)
	Health	Human Services Division	2020	101000	241000	601470	7,173.90
	Health	Human Services Division	2020	101000	241000	605023	3,285.00
	Health	Human Services Division	2020	101000	241000	605530	457.12
	Health	Human Services Division	2020	101000	241000	605540	3,537.35
	Health	Homelessness	2020	101000	244000	605530	8.96
	Health	Homelessness	2020	101000	244000	605540	122.72
	Health	Community Health Nursing	2020	101000	246000	600490	31.42
	Health	Community Health Nursing	2020	101000	246000	600720	(120,206.08)
	Health	Community Health Nursing	2020	101000	246000	602710	(16,166.40)
	Health	Community Health Nursing	2020	101000	246000	605063	(120,206.08)
	Health	Community Health Nursing	2020	101000	246000	605530	555.10
	Health	Community Health Nursing	2020	101000	246000	605540	7,512.05
	Health	Community Health Nursing	2020	101000	246000	615200	11,312.64
	Health	Environmental Health Services	2020	101000	256000	601410	7,068.24
	Health	Environmental Health Services	2020	101000	256000	605530	1,304.02
	Health	Environmental Health Services	2020	101000	256000	605540	17,177.41
	Health	Anchorage Memorial Cemetery	2020	101000	271000	605023	11,998.00
	Health	Anchorage Memorial Cemetery	2020	101000	271000	605530	137.77
	Health	Anchorage Memorial Cemetery	2020	101000	271000	605540	1,879.14
	Health	AHD Grants and Contracts	2020	231900	224000	605019	19,892.00
	Health	AHD Grants and Contracts	2020	231900	224000	615200	18,083.00
	Health	Public Health Division	2020	231900	232000	600230	1,978.00
	Health	Public Health Division	2020	231900	232000	600700	28,415.94
	Health	Public Health Division	2020	231900	232000	600710	25,289.64
	Health	Public Health Division	2020	231900	232000	600720	(618.00)
	Health	Public Health Division	2020	231900	232000	605063	(618.00)
	Health	Public Health Division	2020	231900	232000	605530	623.69
	Health	Public Health Division	2020	231900	232000	605540	8,481.92
	Health	Public Health Division	2020	231900	232000	615200	43,619.42
	Health	Senior Svcs & Emerg. Outreach	2020	231900	233000	600230	45.00
	Health	Senior Svcs & Emerg. Outreach	2020	231900	233000	600680	6,801.00
	Health	Senior Svcs & Emerg. Outreach	2020	231900	233000	600710	2,952.00
	Health	Senior Svcs & Emerg. Outreach	2020	231900	233000	605020	3,848.50
	Health	Senior Svcs & Emerg. Outreach	2020	231900	233000	605530	574.11
	Health	Senior Svcs & Emerg. Outreach	2020	231900	233000	605540	7,836.27
	Health	Senior Svcs & Emerg. Outreach	2020	231900	233000	615200	15,372.00
	Health	Child Care Licensing	2020	231900	235000	600230	291.12
	Health	Child Care Licensing	2020	231900	235000	600680	61,426.00
	Health	Child Care Licensing	2020	231900	235000	600700	61,426.00
	Health	Child Care Licensing	2020	231900	235000	605530	1,271.17
	Health	Child Care Licensing	2020	231900	235000	605540	17,333.48
	Health	Child Care Licensing	2020	231900	235000	615200	75,816.00
	Health	Anchorage Safety Center/Patrol	2020	231900	236000	600680	10,290.50
	Health	Anchorage Safety Center/Patrol	2020	231900	236000	600710	10,290.00

Detail of IGC Expenditures (Direct (D) and Indirect (I))

CSP Cat.	Department	Cost Center Description	Fiscal		Cost		Actuals
			Year	Fund	Center	Acct	
Health		Anchorage Safety Center/Patrol	2020	231900	236000	605530	173.13
Health		Anchorage Safety Center/Patrol	2020	231900	236000	605540	2,353.59
Health		Anchorage Safety Center/Patrol	2020	231900	236000	615200	9,107.00
Health		Women, Infants & Children	2020	231900	238000	600230	604.22
Health		Women, Infants & Children	2020	231900	238000	600700	3,420.03
Health		Women, Infants & Children	2020	231900	238000	605017	29,914.53
Health		Women, Infants & Children	2020	231900	238000	605530	594.88
Health		Women, Infants & Children	2020	231900	238000	605540	8,140.86
Health		Women, Infants & Children	2020	231900	238000	615200	19,458.84
Health		AHD Emergency Preparedness	2020	231900	240500	600680	10,607.00
Health		AHD Emergency Preparedness	2020	231900	240500	600710	10,608.00
Health		AHD Emergency Preparedness	2020	231900	240500	605530	608.77
Health		AHD Emergency Preparedness	2020	231900	240500	605540	8,334.15
Health		AHD Emergency Preparedness	2020	231900	240500	615200	8,472.00
Health		Human Services Division	2020	231900	241000	605530	(0.03)
Health		Human Services Division	2020	231900	241000	605540	(0.42)
Health		Community Safety & Development	2020	231900	242000	605530	28.40
Health		Community Safety & Development	2020	231900	242000	605540	386.05
Health		Community Safety & Development	2020	231900	242000	615200	429.92
Health		Disease Prevention & Control	2020	231900	245000	600230	142.56
Health		Disease Prevention & Control	2020	231900	245000	600720	68,520.75
Health		Disease Prevention & Control	2020	231900	245000	605063	68,520.75
Health		Disease Prevention & Control	2020	231900	245000	605530	1,184.74
Health		Disease Prevention & Control	2020	231900	245000	605540	16,087.55
Health		Disease Prevention & Control	2020	231900	245000	615200	71,949.50
Health		Community Health Nursing	2020	231900	246000	600230	255.81
Health		Community Health Nursing	2020	231900	246000	600720	51,685.33
Health		Community Health Nursing	2020	231900	246000	602710	16,166.40
Health		Community Health Nursing	2020	231900	246000	605063	51,685.33
Health		Community Health Nursing	2020	231900	246000	605530	1,558.06
Health		Community Health Nursing	2020	231900	246000	605540	21,321.22
Health		Community Health Nursing	2020	231900	246000	615200	6,386.86
Health		Environmental Health Services	2020	231900	256000	600230	121.25
Health		Environmental Health Services	2020	231900	256000	600670	4,563.00
Health		Environmental Health Services	2020	231900	256000	600680	4,563.00
Health		Environmental Health Services	2020	231900	256000	605019	4,563.00
Health		Environmental Health Services	2020	231900	256000	605530	76.34
Health		Environmental Health Services	2020	231900	256000	605540	1,038.97
Health		Environmental Health Services	2020	231900	256000	615200	8,287.00
Health		Community Safety & Development	2020	241800	242000	605530	150.83
Health		Community Safety & Development	2020	241800	242000	605540	2,119.89
Health		Community Safety & Development	2020	241800	242000	615200	9,306.00
Health		Environmental Health Services	2020	241800	256000	615200	66.00
Health		Community Safety & Development	2020	241900	242000	605530	375.61
Health		Community Safety & Development	2020	241900	242000	605540	5,004.36
Health		Public Health Division	2020	261010	232000	615200	160.00
Health		Administration Division Support	2020	401100	221000	600230	51.80
Health		Administration Division Support	2020	401100	221000	605530	221.16
Health		Administration Division Support	2020	401100	221000	605540	367.44
Health		Administration Division Support	2020	401100	221000	615202	74,200.00
Health		Animal Care & Control	2020	401100	225000	605530	0.83
Health		Animal Care & Control	2020	401100	225000	605540	1.38
Health		Senior Svcs & Emerg. Outreach	2020	401100	233000	605530	25.68
Health		Senior Svcs & Emerg. Outreach	2020	401100	233000	605540	42.64
Health		Administration Division Support	2020	401800	221000	600230	36.60
Health		Administration Division Support	2020	401800	221000	605530	41.41
Health		Administration Division Support	2020	401800	221000	605540	68.81
Health		Animal Care & Control	2020	401800	225000	605530	46.79
Health		Animal Care & Control	2020	401800	225000	605540	77.76
							4,267,221.43

CSP Cat.	Department	Cost Center Description	Fiscal		Cost		Actuals
			Year	Fund	Center	Acct	
Health		AHD Director's Office	2020	101000	211000	408380	(20.15)
Health		AHD Debt Service	2020	101000	215000	460030	(428.36)
Health		Administration Division Support	2020	101000	221000	408380	(27.56)
Health		AHD Fiscal Support	2020	101000	222000	408380	(14.59)
Health		AHD Grants and Contracts	2020	101000	224000	408380	(39.47)
Health		AHD Grants and Contracts	2020	101000	224000	605019	(24,455.00)
Health		Animal Care & Control	2020	101000	225000	404210	(184,787.50)
Health		Animal Care & Control	2020	101000	225000	406510	(197,059.69)
Health		Animal Care & Control	2020	101000	225000	406520	(13,702.00)
Health		Animal Care & Control	2020	101000	225000	407050	(13,362.46)
Health		Public Health Division	2020	101000	232000	408380	(10.32)
Health		Senior Svcs & Emerg. Outreach	2020	101000	233000	408380	(31.21)
Health		Child Care Licensing	2020	101000	235000	406170	(39,304.40)
Health		Child Care Licensing	2020	101000	235000	408380	(53.71)
Health		Anchorage Safety Center/Patrol	2020	101000	236000	408380	(4.59)
Health		Women, Infants & Children	2020	101000	238000	408380	(57.08)
Health		Women, Infants & Children	2020	101000	238000	605017	(29,914.53)
Health		Human Services Division	2020	101000	241000	408380	(117.15)
Health		Human Services Division	2020	101000	241000	605020	(3,848.50)
Health		Community Safety & Development	2020	101000	242000	408380	(35.54)
Health		Health Information Mgmt	2020	101000	243000	408550	155.00
Health		Disease Prevention & Control	2020	101000	245000	408380	(26.94)
Health		Community Health Nursing	2020	101000	246000	406160	(5,536.20)
Health		Community Health Nursing	2020	101000	246000	406180	(37,884.16)
Health		Community Health Nursing	2020	101000	246000	408380	(63.89)
Health		Community Health Nursing	2020	101000	246000	408550	581.60
Health		Environmental Health Services	2020	101000	256000	406170	(906,224.15)
Health		Environmental Health Services	2020	101000	256000	406540	(160.00)
Health		Environmental Health Services	2020	101000	256000	407080	(1,903.63)
Health		Environmental Health Services	2020	101000	256000	407090	(300.00)
Health		Environmental Health Services	2020	101000	256000	408380	(29.07)
Health		Environmental Health Services	2020	101000	256000	408400	(155.00)
Health		Environmental Health Services	2020	101000	256000	408550	1,050.00
Health		Anchorage Memorial Cemetery	2020	101000	271000	406440	(359,997.91)
Health		Anchorage Memorial Cemetery	2020	101000	271000	408380	(7.69)
Health		Anchorage Memorial Cemetery	2020	101000	271000	460030	(2,570.19)
Health		AHD Grants and Contracts	2020	231800	224000	450010	(242,982.00)
Health		AHD Grants and Contracts	2020	231900	224000	405010	(812,131.50)
Health		Public Health Division	2020	231900	232000	405150	(813,481.34)
Health		Senior Svcs & Emerg. Outreach	2020	231900	233000	405010	(342,505.33)
Health		Senior Svcs & Emerg. Outreach	2020	231900	233000	405150	(346,671.34)
Health		Child Care Licensing	2020	231900	235000	405010	(1,014.44)
Health		Child Care Licensing	2020	231900	235000	405150	(12,040,440.11)
Health		Anchorage Safety Center/Patrol	2020	231900	236000	405150	(233,408.47)
Health		Women, Infants & Children	2020	231900	238000	405150	(731,305.22)
Health		AHD Emergency Preparedness	2020	231900	240500	405150	(1,812,055.53)
Health		Human Services Division	2020	231900	241000	405010	(39,660.68)
Health		Community Safety & Development	2020	231900	242000	405150	(27,141.41)
Health		Disease Prevention & Control	2020	231900	245000	405010	(1,523,490.05)
Health		Disease Prevention & Control	2020	231900	245000	405150	(62,654.70)
Health		Community Health Nursing	2020	231900	246000	405010	(1,575,809.98)
Health		Community Health Nursing	2020	231900	246000	405150	(269,655.33)
Health		Environmental Health Services	2020	231900	256000	405010	(27,139.29)
Health		Environmental Health Services	2020	231900	256000	405150	(273,406.79)
Health		Community Safety & Development	2020	241800	242000	408370	(85,516.51)
Health		Community Safety & Development	2020	241800	242000	440050	(6,295.00)
Health		Environmental Health Services	2020	241800	256000	450010	(506.00)
Health		Community Safety & Development	2020	241900	242000	405100	(1,361,235.34)
Health		Environmental Health Services	2020	241900	256000	405100	(3,000.00)
Health		AHD Grants and Contracts	2020	261010	224000	450010	(250,000.00)
Health		Animal Care & Control	2020	261010	225000	430030	(11,522.07)
Health		Animal Care & Control	2020	261010	225000	450010	(183.00)

CSP			Fiscal	Cost			
Cat.	Department	Cost Center Description	Year	Fund	Center	Acct	Actuals
	Health	Homelessness	2020	261010	244000	450010	(479,397.31)
							<u>(25,192,954.78)</u>

CSP Cat.	Department	Cost Center Description	Fiscal		Cost		Actuals
			Year	Fund	Center	Acct	
Health		AHD Director's Office	2020	101000	211000	600020	14,719.34
Health		AHD Director's Office	2020	101000	211000	600030	7,896.32
Health		AHD Director's Office	2020	101000	211000	600050	14,753.04
Health		AHD Director's Office	2020	101000	211000	600060	10,361.18
Health		AHD Director's Office	2020	101000	211000	600090	17,711.18
Health		AHD Director's Office	2020	101000	211000	600120	878.38
Health		AHD Director's Office	2020	101000	211000	600140	913.53
Health		AHD Director's Office	2020	101000	211000	600150	22,696.27
Health		AHD Director's Office	2020	101000	211000	600200	364,150.97
Health		AHD Director's Office	2020	101000	211000	600220	6,831.11
Health		AHD Director's Office	2020	101000	211000	600240	106,979.99
Health		AHD Director's Office	2020	101000	211000	600280	29,827.56
Health		AHD Director's Office	2020	101000	211000	600290	51,464.44
Health		AHD Director's Office	2020	101000	211000	600300	104,125.93
Health		AHD Director's Office	2020	101000	211000	600320	21,967.84
Health		AHD Director's Office	2020	101000	211000	600330	5,684.09
Health		AHD Director's Office	2020	101000	211000	600360	71,805.15
Health		AHD Director's Office	2020	101000	211000	600370	5,423.86
Health		AHD Director's Office	2020	101000	211000	600430	31,011.89
Health		AHD Director's Office	2020	101000	211000	600540	63,371.93
Health		AHD Director's Office	2020	101000	211000	600570	9,539.01
Health		AHD Director's Office	2020	101000	211000	600580	37,478.61
Health		AHD Director's Office	2020	101000	211000	600610	21,713.21
Health		AHD Director's Office	2020	101000	211000	601080	3,223.93
Health		AHD Director's Office	2020	101000	211000	601090	1,186,999.93
Health		AHD Director's Office	2020	101000	211000	601890	229,617.45
Health		Administration Division Support	2020	101000	221000	600250	2,641.51
Health		Animal Care & Control	2020	101000	225000	600440	285.18
Health		Animal Care & Control	2020	101000	225000	600490	1,307.81
Health		Women, Infants & Children	2020	101000	238000	600910	13,215.15
Health		Women, Infants & Children	2020	101000	238000	601020	7,670.83
Health		Human Services Division	2020	101000	241000	600250	7,597.98
Health		Community Health Nursing	2020	101000	246000	600490	31.42
Health		Women, Infants & Children	2020	231900	238000	600230	604.22
Health		Disease Prevention & Control	2020	231900	245000	600230	142.56
Health		Community Health Nursing	2020	231900	246000	600230	255.81
Health		Administration Division Support	2020	401100	221000	600230	51.80
Health		Administration Division Support	2020	401800	221000	600230	36.60
							<u>2,474,987.01</u>

CSP Cat.	Department	Cost Center Description	Fiscal		Cost		Actuals
			Year	Fund	Center	Acct	
Health		AHD Director's Office	2020	101000	211000	600080	19,391.47
Health		AHD Director's Office	2020	101000	211000	600160	107,581.03
Health		AHD Director's Office	2020	101000	211000	600180	159,602.59
Health		AHD Director's Office	2020	101000	211000	600190	4,505.18
Health		AHD Debt Service	2020	101000	215000	580010	4,223.32
Health		AHD Debt Service	2020	101000	215000	580020	2,885.84
Health		AHD Debt Service	2020	101000	215000	580030	0.04
Health		AHD Debt Service	2020	101000	215000	580140	10.46
Health		Administration Division Support	2020	101000	221000	570210	4,860.40
Health		AHD Fiscal Support	2020	101000	222000	570210	1,301.43
Health		AHD Grants and Contracts	2020	101000	224000	570210	4,196.23
Health		AHD Grants and Contracts	2020	101000	224000	580530	492,982.00
Health		Animal Care & Control	2020	101000	225000	570210	11,107.26
Health		Animal Care & Control	2020	101000	225000	570230	10,967.02
Health		Animal Care & Control	2020	101000	225000	580530	183.00
Health		Public Health Division	2020	101000	232000	540100	5,000,000.00
Health		Public Health Division	2020	101000	232000	570210	1,473.61
Health		Senior Svcs & Emerg. Outreach	2020	101000	233000	570210	12,907.22
Health		Child Care Licensing	2020	101000	235000	570210	5,115.09
Health		Anchorage Safety Center/Patrol	2020	101000	236000	540100	3,448.69
Health		Anchorage Safety Center/Patrol	2020	101000	236000	540110	56,206.42
Health		Anchorage Safety Center/Patrol	2020	101000	236000	580530	149,352.06
Health		Anchorage Domestic Violence F	2020	101000	239000	540110	186,623.58
Health		Human Services Division	2020	101000	241000	540110	424,336.00
Health		Human Services Division	2020	101000	241000	580530	330,045.25
Health		Community Safety & Developme	2020	101000	242000	540100	2,500,000.00
Health		Community Safety & Developme	2020	101000	242000	570230	8,894.00
Health		Homelessness	2020	101000	244000	540100	2,400,000.00
Health		Homelessness	2020	101000	244000	570210	4,177.82
Health		Community Health Nursing	2020	101000	246000	540150	1,116.00
Health		Community Health Nursing	2020	101000	246000	570210	1,275.37
Health		Environmental Health Services	2020	101000	256000	570210	12,139.37
Health		Environmental Health Services	2020	101000	256000	580530	506.00
Health		Anchorage Memorial Cemetery	2020	101000	271000	540150	421.97
Health		Anchorage Memorial Cemetery	2020	101000	271000	570200	11,509.48
Health		Anchorage Memorial Cemetery	2020	101000	271000	580010	46,873.31
Health		Anchorage Memorial Cemetery	2020	101000	271000	580020	21,873.10
Health		Anchorage Memorial Cemetery	2020	101000	271000	580030	0.40
Health		Anchorage Memorial Cemetery	2020	101000	271000	580140	62.74
Health		AHD Grants and Contracts	2020	231800	224000	540110	241,163.49
Health		AHD Grants and Contracts	2020	231900	224000	540110	774,156.50
Health		Public Health Division	2020	231900	232000	540150	384.80
Health		Senior Svcs & Emerg. Outreach	2020	231900	233000	540150	2,309.19
Health		Child Care Licensing	2020	231900	235000	540110	10,500,000.00
Health		Child Care Licensing	2020	231900	235000	570210	1,402.09
Health		Anchorage Safety Center/Patrol	2020	231900	236000	570210	7,402.05
Health		Women, Infants & Children	2020	231900	238000	540150	212.05
Health		Women, Infants & Children	2020	231900	238000	570210	2,550.74
Health		Women, Infants & Children	2020	231900	238000	570230	4,985.00
Health		AHD Emergency Preparedness	2020	231900	240500	570210	70,430.02
Health		AHD Emergency Preparedness	2020	231900	240500	570230	27,054.00
Health		Human Services Division	2020	231900	241000	540110	3,150.00
Health		Community Health Nursing	2020	231900	246000	570210	3,730.08
Health		Environmental Health Services	2020	231900	256000	540150	107,161.62
Health		Community Safety & Developme	2020	241800	242000	540150	789.35
Health		Community Safety & Developme	2020	241900	242000	540110	816,227.05
Health		Community Safety & Developme	2020	241900	242000	540150	1,307.25
Health		Environmental Health Services	2020	241900	256000	540150	3,000.00
Health		AHD Grants and Contracts	2020	261010	224000	540110	23,513.01
Health		Administration Division Support	2020	401100	221000	570200	9,806.23
							<u>24,602,889.27</u>