

# Municipality of Anchorage

- Alaska –

**2022**

## Central Services Cost Allocation Plan



Dave Bronson  
Mayor

Cheryl Frasca  
Director, Office of Management & Budget

**MUNICIPALITY OF ANCHORAGE**  
**2022**  
**CENTRAL SERVICES PLAN**

**Table of Contents**

**GENERAL INFORMATION**

Certificate of Cost Allocation Plan.....	1
Introduction to Central Services Plan.....	2
Cognizant Agency Determination.....	3
Organizational Chart at 01/01/2020.....	5

**FINANCIAL INFORMATION**

Indirect Costs to Grants from Central Service Plan Units.....	6
Unallowable Cost Adjustments by Municipal Account.....	7
Carry Forward Adjustment.....	8
Summary of Billing Units (Including Adjustments).....	9
Detail of Direct Expenditures.....	12
Detail of IGC Expenditures (Direct and Indirect).....	28
Detail of Billings (IGC) and Program Revenues.....	33
Detail of Non-Allowable Expense Adj-Within Unit.....	36

**INTRAGOVERNMENTAL CHARGE-OUT METHODOLOGIES**

102003 Clerk-Agenda Control.....	37
102006 Clerk-Municipal Audit.....	38
102007 Clerk-Liquor License.....	39
103000 Ombudsman.....	40
106000 Internal Audit.....	41
111100 Mayor.....	42
113200 Office of Equal Opportunity.....	43
113271 IGC-OEO-Equal Employment Opportunity.....	44
113272 IGC-OEO-Contract Compliance.....	45
113273 IGC-OEO-Contract DBE.....	46
115100 Civil Law.....	47
115200 Criminal.....	48
115300 Administrative Hearing.....	49

115400 Muni Attorney Administration.....	50
121000 Muni Manager Admin.....	51
122300 Leases Administration.....	52
122301 Leases-Parking Garage.....	53
122302 Leases-City Hall.....	54
122303 Leases-ERTC.....	55
122304 Leases-Libraries.....	56
122306 Leases-Traffic.....	57
122307 Leases-Recreation.....	58
122309 Leases-Permit Center.....	59
122310 Leases-Police.....	60
124200 Office of Emergency Management.....	61
124700 Risk Management.....	62
124900 Safety.....	63
132100 Controller Administration.....	64
132200 Central Accounting.....	65
132300 Payroll.....	66
132400 Accounts Payable.....	67
134100 Treasury Administration.....	68
134200 Revenue Management.....	69
134271 IGC-Rev Mgmt-E911.....	70
134272 IGC-Rev Mgmt-PSAR Billing.....	71
134273 IGC-Rev Mgmt-Cash Receipts.....	72
134274 IGC-Rev Mgmt-In-House Collections.....	73
134275 IGC-Rev Mgmt-DCF.....	74
134276 IGC-Exter Collect Agency Recov.....	75
134600 Tax Billing.....	76
134671 IGC-Tax Billing Utilities.....	77
134700 Remittance Processing.....	78
134771 IGC-Remittance Processing.....	79
137000 Chief Fiscal Officer.....	80
138100 Purchasing Services.....	81
139100 Management & Budget.....	82
141100 Admin Support.....	83
142300 Reprographics.....	84
142371 IGC-Repro.....	85
142400 Records Management.....	86

142500 IGC IT Fin Svcs.....	87
143500 IGC - IT Security.....	88
143571 IT Security - All.....	89
143572 IT Security - No AWWU.....	90
144000 Fixed Assets.....	91
144003 IGC - Microsoft EA SW & HW uprds.....	92
145100 Application Services.....	93
145500 ERP Services.....	94
146200 IGC - SAP Support Centr.....	95
147300 Projects & Procurement.....	96
148100 Desktop Services.....	97
148200 Network Services.....	98
148271 IGC - Netwk Svcs - Servers.....	99
148272 IGC - Netwk Svcs - Network.....	100
148273 IGC - Network Svcs - Phones.....	101
148300 Technology Services.....	102
149001 CAMA Depreciation.....	103
181000 Employee Relations Admin.....	104
184100 Labor Relations.....	105
184500 Employment.....	106
187100 Benefits.....	107
510500 OECD Administration .....	108
510600 OECD Data & Analytics.....	109
510671 IGC-OECD GIS Licensing.....	110
510672 IGC-OECD GIS Enterprise Program.....	111
510673 IGC-OECD GIS Dept Support.....	112
710500 Facility Maintenance.....	113
710503 Facilities-Girdwood.....	114
710506 Facilities-Eagle River Town Center.....	115
710509 Facilities-Fire Stations.....	116
710512 Facilities-Libraries.....	117
710515-Facilities-Fac Maint Whse.....	118
710518 Facilities-Traffic.....	119
710521 Facilities-RES/Historical Property.....	120
710524 Facilities-Areawide Parks & Rec.....	121
710527 Facilities-Health and Human Services.....	122

710530 Facilities-ARDSA.....	123
710533 Facilities-Transit/Centers/Park & Rides.....	124
710536 Facilities-Fleet Maint.....	125
710539 Facilities-Police / Substations.....	126
710542 Facilities-Eagle River Parks & Rec.....	127
710545 Facilities-City Hall.....	128
710548 Facilities-Eagle River Parks & Rec Chalet.....	129
710551 Facilities-Eagle River Parks & Rec Pools.....	130
710554 Facilities-Areawide Parks & Rec Pools.....	131
710557 Facilities-Heritage Land Bank.....	132
710560 Facilities-Chugiak Fire Service Area.....	133
710562 Facilities-CBERRSA.....	134
710563 Facilities-NC HJ Mac Mem Ctr.....	135
710566 Facilities-NC Sullivan Arena.....	136
710569 Facilities-NC Egan Center.....	137
710572 Facilities-NC Dena'ina Center.....	138
710575 Facilities-NC Performing Arts Center.....	139
710581 Facilities- NC Anchorage Museum.....	140
710583 Facilities-Permit Center.....	141
710800 Facility Capital Improvements.....	142

### Certificate of Cost Allocation Plan

This is to certify that I have reviewed the cost allocation plan submitted herewith and to the best of my knowledge and belief:

- (1) All costs included in this proposal to establish cost allocations or billing for the period January 1, 2022 through December 31, 2022 are allowable in accordance with the requirements of this Part and the Federal award(s) to which they apply.<sup>1</sup> Unallowable costs have been adjusted for in allocating costs as indicated in the cost allocation plan.
- (2) All costs included in this proposal are properly allocable to Federal awards on the basis of a beneficial or a causal relationship between the expenses incurred and the Federal awards to which they are allocated in accordance with applicable requirements. Further, the same costs that have been treated as indirect costs have not been claimed as direct costs. Similar types of costs have been accounted for consistently.

I declare the foregoing is true and correct

Municipality of Anchorage  
Anchorage, Alaska

Parrish, Blessing & Associates  
Anchorage, Alaska

Cheryl Frasca  
(Signature)

William J. Wilks  
(Signature)

Cheryl Frasca  
Director, Office of Management & Budget  
Date of Execution: 3/8/22

William J. Wilks  
Preparer  
Date of Execution: 3/8/22

<sup>1</sup> Office of Management and Budget, 2CFR Chapter 1 and Chapter 11, Parts 200, 215, 220, 225, and 230. Uniform Administration Requirements, Cost Principles, and Audit Requirements for Federal Awards.

## **Introduction to Central Services Cost Allocation Plan**

This document presents the Central Services Cost Allocation Plan for the Municipality of Anchorage. The central service costs presented in this document are based on the Municipality's actual costs from January 1, 2020 to December 31, 2020. They will be included in the Indirect Cost Rate Proposals and rates used by grantee departments during the fiscal year beginning January 1, 2022.

Most Municipal central service budget units charge user units for services through the allocation system within the Intragovernmental Chargeback System (IGCs). The IGCs and the allocation system with it are integrated with the Municipality's financial information system and allows automated or manual transfer of expenses between budget units. This document explains the billing methodologies and allocated amounts for those units. Additionally, this document presents a consolidated summary of the actual 2020 costs for the various central services plan agencies.

A few central service units do not bill for their services through IGCs. This document includes allocation methodologies and allocated amounts for those units. Additionally, this document presents a consolidated summary of the actual 2020 costs for those central services plan agencies.

Some costs billed through the IGCs are unallowable under the guidelines presented in the Office of Management & Budget guidance on Administrative Requirements, Cost Principals, and Audit Requirements for Federal Awards released December 26, 2013. The existence of such unallowable costs and the 2020 amounts are presented in this document. This information on unallowable costs will be used in the Indirect Cost Rate Proposals to calculate appropriate downward adjustments to the grantee department indirect cost rates.

## Cognizant Agency

### Background:

The Municipality of Anchorage (MOA) requested Parrish Blessing and Associates (PBA) provide guidance in determining the MOA's cognizant Federal agency responsible for approving the MOA's Cost Allocation Plan (CAP) and Indirect Cost Rate Proposals (ICRP). Through 2018, the MOA annually developed a CAP and ICRPs in compliance with applicable Federal regulations through a self-certification process. Upon completion of each annual CAP and ICRPs, the MOA uploaded these studies on its website for public review and inspection<sup>1</sup>.

These studies, among other things, contained a certification by the MOA's Chief Fiscal Officer that the plans were compliant with applicable Federal regulations involving Federal grant awards including a narrative explaining how the cost studies were prepared, and finally, an indirect cost rate schedule showing the calculations of the ICRP for each MOA department that intends to charge indirect costs to Federal grant awards. The CAPs and ICRPs each contained a letter from the MOA's then cognizant Federal agency, the Department of Health and Human Services, dated August 19, 1986 instructing the MOA that future CAPs and ICRPs no longer have to be submitted for their review, but must continue to be prepared in accordance with Federal regulations and available upon request as of the time a claim is made against a Federal award.

Given the passage of time since the August 1986 letter, the MOA requested a determination of its cognizant agency for approval of its CAPs and ICRPs. The cognizant agency for indirect costs means the Federal agency responsible for reviewing, negotiating, and approving indirect cost proposals or cost allocation plans developed under 2 CFR part 200 on behalf of all Federal agencies. Cognizance is generally assigned to the Federal agency that provides the predominant amount of dollar involvement with a recipient organization. Once designed as the cognizant agency for indirect costs, the Federal agency must remain so for a period of 5 years.

### Determination of the MOA's Cognizant Agency:

On December 26, 2013, the Federal Office of Management & Budget (OMB) published its Uniform Guidance that became effective for Federal agencies immediately. Non-Federal entities (i.e. the MOA) were required to comply with the regulations beginning December 2014. Those regulations, among other things, identified the filing requirements of Major Local Government agencies needing to file a CAP to its cognizant agency for indirect costs on an annual basis, and further, identified the cognizant agency<sup>2</sup>. PBA reviewed the reference given in the Federal register and the MOA was identified and the cognizant agency assigned to the MOA was the Department of Health & Human Services (DHHS). Based on these rules and regulations PBA believed that DHHS remained the MOA's cognizant agency through 2018.

<sup>1</sup> The MOA OMB is responsible for the development of the MOA Central Service CAPs and ICRPs. These studies can be viewed on the MOA's website at: <http://www.muni.org/Departments/budget/indirectCost/Pages/default.aspx>

<sup>2</sup> See Federal Register Vol. 78, No. 248 issued Thursday, December 26, 2013/Rules and Regulations at page 78606 Appendix V that states: "The "major local governments" subject to this requirement, along with each cognizant agency assignment, are listed in the **Federal Register** notice dated January 6, 1986 (available at: [http://www.whitehouse.gov/sites/default/files/omb/assets/financial\\_pdf/fr-notice\\_cost\\_negotiation\\_010686.pdf](http://www.whitehouse.gov/sites/default/files/omb/assets/financial_pdf/fr-notice_cost_negotiation_010686.pdf))."



PBA reviewed the MOA's website and saw that it had made available its CAPs and ICRPs from 2010 through 2018 and had correctly recognized that its cognizant agency was DHHS.

When the MOA was required to complete its 2019 CAP and ICRP, a fresh-look determination of the cognizant agency was required, given that 5 years had lapsed since the December 2014 regulations that assigned the DHHS as the MOA's cognizant agency. PBA believed that in order to determine the appropriate cognizant agency for future CAPs and ICRPs, a review of Federal awards received in 2018 was required.

Working with the MOA OMB staff, PBA determined, based on Table 1 below (Summary of Federal grant awards by MOA agency for 2018), that the MOA's cognizant Federal agency should be the Department of Transportation (DOT) beginning in 2019 and continuing for 5 years or through 2023, pursuant to Federal regulations. As shown in Table 1, DOT provides the predominant amount of dollar involvement with a MOA in 2018

**Table 1: Summary of Direct Federal Grant Awards/Amendments by MOA Agency for 2018**

2018 Sum of Federal Award Amount	Equal Rights Comm.	Health	Merrill Field	Police	Port	Public Transp.	Total
Department of Health & Human Services	-	26,000	-	-	-	-	26,000
Department of Homeland Security	-	-	-	-	455,150	-	455,150
Department of Housing & Urban Development	-	2,604,334	-	-	-	-	2,604,334
Department of Justice	-	-	-	674,379	-	-	674,379
Department of the Interior	-	-	472,104	-	-	-	472,104
Department of Transportation	-	-	12,337,784	-	-	3,773,716	16,111,500
Equal Employment Opportunity Commission	68,900	-	-	-	-	-	68,900
Grand Total	68,900	2,630,334	12,809,888	674,379	455,150	3,773,716	20,412,367

Although the majority of the grants received by MOA are in Merrill Field from Department of Transportation, Federal Aviation Administration (FAA), the FAA follows indirect costs as determined by the Federal Transit Administration (FTA) circular.

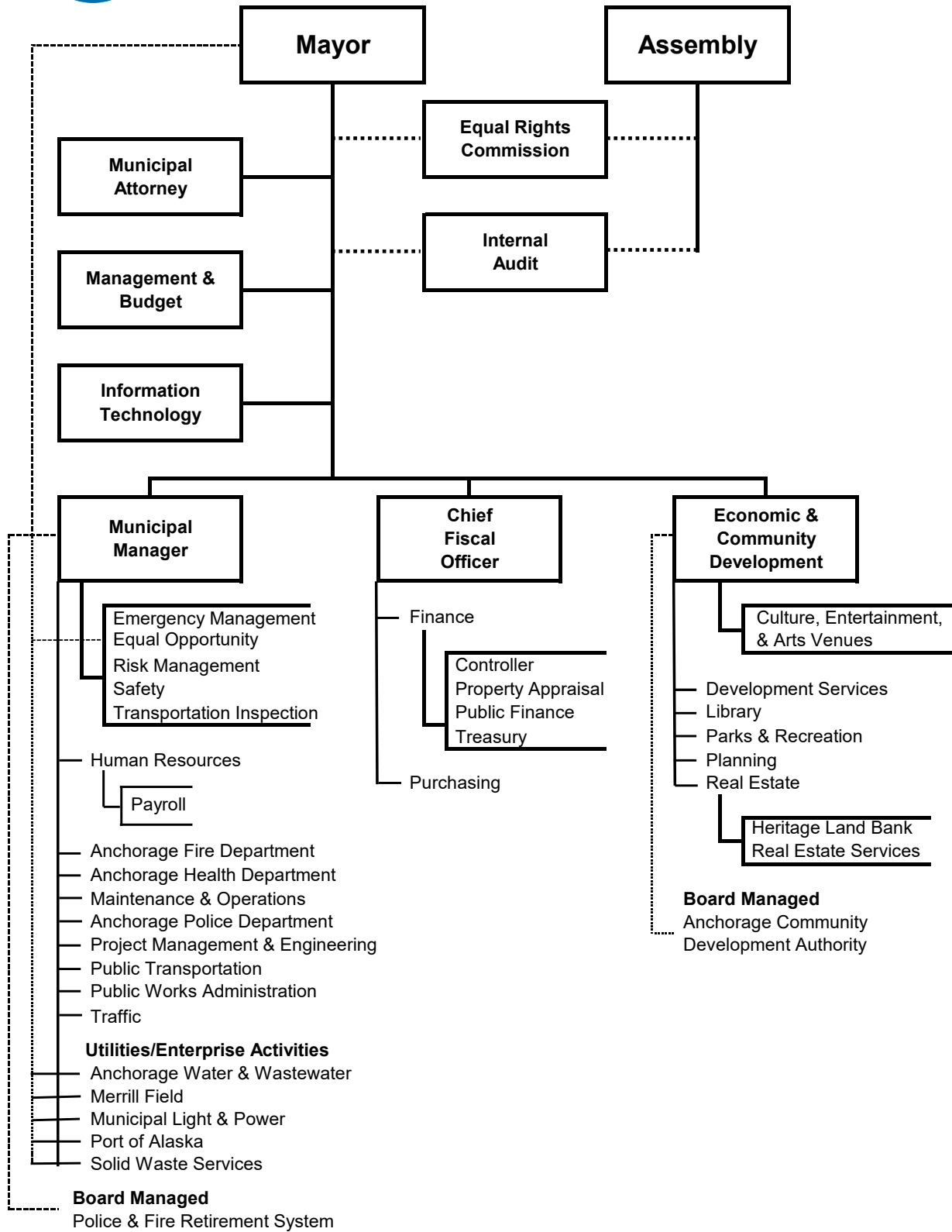
With the change in cognizant agencies, the FTA determined that the MOA needed to submit the CAP and ICRPs for approval.

As part of this engagement, the MOA also requested that PBA determine if changing its cognizant agency from DHHS to another agency (DOT) required submitting its CAP and ICRP for approval. To make this determination PBA reviewed the U.S. Department of Transportation, Federal Transit Administration Circular FTA C 5010.1E issued March 21, 2017 and associated revisions released July 21, 2017 and July 16, 2018. The FTA circular provides the following conditions that trigger the need for submitting a recipient's CAP and ICRP for approval as follows:

In Summary, based on FTA circular as reference herein PBA concluded that beginning in 2019 and continuing for 5 years or through 2023, the MOA's cognizant agency is DOT. Further, that the MOA should continue to prepare its CAP and ICRPs pursuant to these regulations.



# MUNICIPALITY OF ANCHORAGE



## **Indirect Costs to Grants from Cost Allocation Plan Units**

Indirect costs are costs incurred for a common or joint purpose benefiting more than one cost objective. Indirect costs must be supported by an approved Cost Allocation Plan (CAP) and/or Indirect Cost Rate Proposal (ICRP).

Indirect costs include: (1) the indirect costs originating in each department or agency of the recipient carrying out federal Awards; and (2) the costs of central governmental services distributed through the central service cost allocation plan and not otherwise treated as direct costs.

## Unallowable Cost Adjustments by Municipal Account

The following account expenditures are considered Unallowable for purposes of preparing the Municipal Central Services Plan (CSP) and Indirect Cost Rate Proposals. Those accounts which are generally unallowable are filtered out of the total costs used in preparing both the CSP and Indirect Cost Proposals for the Municipality of Anchorage (MOA). Those expenditure accounts are:

### Capital

Municipal accounts 570000 – 570999

Although OMB regulations permit flexibility in allowing some capital costs to be allowable, MOA has taken a more conservative approach and excludes all capital costs in its determination of the CSP unallowable percentage computation and indirect cost rates.

### Contributions to Other Funds

Municipal accounts 580530, 580540, and 580550 except for reserves and contributions to capital for purpose.

### Other

Direct Costs	Account
Novelties	511290
Legal Services	530090 – 530180
Lobbying Services	530210
Court Costs, Invest, Record Exp	540030
Donations to Non-Profit Org	540100
Contributions to Outside Organizations	540110, 540120
Sponsorship - Operating	540130
Advertising	540150
Election – Misc. Exp	540450
Penalties	540510
Assessment Payments	540590
Debt Service, All	580000 – 580499

### Indirect Costs

Office of the Mayor IGCs municipal account 600080

Department of Law IGCs municipal accounts 600160, 600170, 600180, 600190

The expenditures in these accounts are then compiled in the Non-Allowable Expenditures columns in the reports on the following pages and used to compute the disallowance percentage for Municipal Indirect Cost Rate Proposals.

## Carry Forward Adjustment

The Municipality of Anchorage computes its central services plan using a “fixed with carry forward” procedure. Under this procedure, historical costs are used for a future fiscal year central services plan. When the actual costs of the year involved become known, the differences between the fixed amounts used in central services cost calculation and the actual costs will be carried forward and used as an adjustment to the fixed amounts established for a later year, only if the result is a net overbill.

For example, the Municipality used actual 2018 historical costs to set the central services plan for 2020. Actual 2020 costs were available at the time the Municipality prepared its 2022 central services plan. Therefore, the Municipality made a carry forward adjustment for the 2022 central services plan by taking the difference between the actual 2020 costs and the fixed costs used to set 2020 central services plan (2018 historical costs) as an adjustment to the 2022 central services plan.



**Municipality of Anchorage  
Central Services Plan (CSP)  
Summary of Billing Units (Including Adjustments)**

The following units' costs were used in the development of Indirect Cost Rates for the Municipality of Anchorage. These central services costs are collected and pooled in these units and then are allocated out 100% according to methodologies that were developed to best represent cost causer/cost payor correlation. The charges from these units are, for the most part, considered indirect costs because they generally cannot be directly attributed to any specific program, but most programs need and use the services these units provide. Although they are shown as billed costs to the various programs, they are generally not treated nor billed as direct costs to grants. These are identified with a "CS" in the Detail pages of the Central Services Cost Allocation Plan and Indirect Cost Rate

The "UnAlloc" cost centers (typically end with "79") are included because they received allocations of the revenue offset for SAP modified/accrual sweeps in 2017 and 2018. All other activity on these cost centers was excluded in 2017 and 2018 since it was not allocated as a central service cost.

			Using Results as of December 31, 2020					Amount	2018	2020	
Fund	Cost Center	Description	Direct Expenditures	IGC Expenditures (Direct and Indirect)	Total Expenditures - Direct and IGC	Non-Allowable Expenditures (1)	Total Allowable Expenditures	Billing (IGC) and Program Revenues	(Over)/Under Billed if 100% Revenue Supported	(Over)/Under Billed if 100% Revenue Supported	Carry Forward Adjustment (2)
101000	102003	Clerk-Agenda Control	232,193	1,227	233,420	-	233,420	(233,420)	-	(11,679)	(11,679)
101000	102006	Clerk-Municipal Audit	442,694	-	442,694	-	442,694	(442,694)	-	-	-
101000	102007	Clerk-Liquor License	71,202	366	71,569	-	71,569	(71,569)	-	(2,099)	(2,099)
101000	102079	IGC-Clerk-UnAlloc	-	-	-	-	-	-	-	13,778	13,778
101000	103000	Ombudsman	257,304	33,395	290,699	-	290,699	(290,699)	-	(14,679)	(14,679)
101000	103079	IGC-Ombudsman-UnAlloc	-	-	-	-	-	-	-	14,679	14,679
101000	106000	Internal Audit	783,369	92,905	876,274	-	876,274	(876,274)	-	(43,875)	(43,875)
101000	106079	IGC-Internal Audit-UnAlloc	-	-	-	-	-	-	-	43,875	43,875
101000	111100	Mayor	1,217,078	164,755	1,381,834	-	1,381,834	(1,381,834)	-	(51,435)	(51,435)
101000	111179	IGC-Mayor-UnAlloc	-	-	-	-	-	-	-	51,435	51,435
101000	113200	Office of Equal Opportunity	229,998	30,403	260,400	500	259,900	(260,400)	-	(14,212)	(14,212)
101000	113271	IGC-OEO-Equal Employment Opportur	-	65,096	65,096	-	65,096	(65,096)	-	-	-
101000	113272	IGC-OEO-Contract Compliance	-	65,096	65,096	-	65,096	(65,096)	-	-	-
101000	113273	IGC-OEO-Contract DBE	-	130,192	130,192	-	130,192	(130,192)	-	-	-
101000	113279	IGC-OEO-UnAlloc	-	-	-	-	-	-	-	14,212	14,212
101000	115100	Civil Law	2,160,482	334,752	2,495,234	69,147	2,426,087	(2,495,234)	-	(133,196)	(133,196)
101000	115200	Criminal	3,368,653	432,619	3,801,271	123,869	3,677,402	(3,801,271)	-	(237,020)	(237,020)
101000	115300	Administrative Hearing	282,937	25,427	308,364	4,505	303,859	(308,364)	-	(15,771)	(15,771)
101000	115400	Muni Attorney Administration	331,888	42,064	373,952	-	373,952	(373,952)	-	(19,705)	(19,705)
101000	115479	IGC-Muni Atty-UnAlloc	-	-	-	-	-	-	-	405,692	405,692
101000	121000	Muni Manager Admin	422,527	64,261	486,788	-	486,788	(486,788)	-	(67,464)	(67,464)
101000	121079	IGC-Muni Mgr-UnAlloc	-	-	-	-	-	-	-	67,464	67,464
101000	122300	Leases Administration	-	-	-	-	-	-	-	-	-
101000	122301	Leases-Parking Garage	91,980	-	91,980	-	91,980	(91,980)	-	-	-
101000	122302	Leases-City Hall	3,747,102	-	3,747,102	198,955	3,548,147	(3,747,102)	-	-	-
101000	122303	Leases-ERTC	346,365	-	346,365	120,000	226,365	(346,365)	-	-	-
101000	122304	Leases-Libraries	217,592	-	217,592	-	217,592	(217,592)	-	-	-
101000	122306	Leases-Traffic	48,000	-	48,000	-	48,000	(48,000)	-	-	-
101000	122307	Leases-Recreation	366,000	-	366,000	-	366,000	(366,000)	-	-	-
101000	122309	Leases-Permit Center	2,064,074	-	2,064,074	-	2,064,074	(2,064,074)	-	-	-
101000	122310	Leases-Police	37,296	-	37,296	-	37,296	(37,296)	-	-	-
101000	122379	IGC-Leases-UnAlloc	-	-	-	-	-	-	-	-	-
101000	124200	Office of Emergency Management	880,811	122,103	1,002,914	455,110	547,804	(1,002,914)	-	(886,101)	(886,101)
101000	124279	IGC-OEM-UnAlloc	-	-	-	-	-	-	-	772,102	772,102
101000	124700	Risk Management	257,515	622,059	879,574	493,192	386,382	(879,574)	-	(28,145)	(28,145)
101000	124900	Safety	145,378	17,728	163,107	432	162,674	(163,107)	-	(6,976)	(6,976)
101000	124979	IGC-Risk Safety-UnAlloc	-	-	-	-	-	-	-	35,120	35,120

		Using Results as of December 31, 2020						Central Services			
		IGC Expenditures		Total Expenditures	Non-Allowable Expenditures	Total Allowable Expenditures	Billing (IGC) and Program Revenues	Amount (Over)/Under Billed if 100% Revenue Supported	2018 Amount (Over)/Under Billed if 100% Revenue Supported	2020 Carry Forward Adjustment	
Fund	Cost Center	Description	Direct Expenditures	(Direct and Indirect)	Direct and IGC	(1)				(2)	
101000	132100	Controller Administration	147,313	19,727	167,040	-	167,040	(167,040)	-	(11,062)	(11,062)
101000	132179	IGC-Contlrler Unalloc	-	-	-	-	-	-	-	200,850	200,850
101000	132200	Central Accounting	2,192,685	315,917	2,508,602	-	2,508,602	(2,508,602)	-	(171,082)	(171,082)
101000	132300	Payroll	1,479,730	296,317	1,776,048	-	1,776,048	(1,776,048)	-	(82,197)	(82,197)
101000	132379	IGC - PR Unalloc	-	-	-	-	-	-	-	80,905	80,905
101000	132400	Accounts Payable	252,286	116,473	368,759	-	368,759	(368,759)	-	(18,660)	(18,660)
101000	134100	Treasury Administration	316,954	43,057	360,011	-	360,011	(360,011)	-	(20,957)	(20,957)
101000	134179	IGC-Treas Unalloc	-	-	-	-	-	-	-	20,957	20,957
101000	134200	Revenue Management	2,180,971	324,103	2,505,074	2,675	2,502,399	(2,505,074)	-	(132,230)	(132,230)
101000	134271	IGC-Rev Mgmt-E911	-	12,493	12,493	-	12,493	(12,493)	-	-	-
101000	134272	IGC-Rev Mgmt-PSAR Billing	-	148,128	148,128	-	148,128	(148,128)	-	-	-
101000	134273	IGC-Rev Mgmt-Cash Receipts	-	207,022	207,022	-	207,022	(207,022)	-	-	-
101000	134274	IGC-Rev Mgmt-In-House Collections	-	30,339	30,339	-	30,339	(30,339)	-	-	-
101000	134275	IGC-Rev Mgmt-DCF	-	506,847	506,847	-	506,847	(506,847)	-	-	-
101000	134276	IGC-Exter Collect Agncy Recov	-	28,555	28,555	-	28,555	(28,555)	-	-	-
101000	134279	IGC-Rev Mgmt-UnAlloc	-	-	-	-	-	-	-	124,948	124,948
101000	134600	Tax Billing	656,520	105,490	762,010	22	761,988	(762,010)	-	(33,963)	(33,963)
101000	134671	IGC-Tax Billing Utilities	-	100,261	100,261	-	100,261	(100,261)	-	-	-
101000	134679	IGC-Tax Billing Areawide-UnAlloc	-	-	-	-	-	-	-	33,935	33,935
101000	134700	Remittance Processing	222,554	67,760	290,314	-	290,314	(290,314)	-	(9,507)	(9,507)
101000	134771	IGC-Remittance Processing	-	237,751	237,751	-	237,751	(237,751)	-	-	-
101000	134779	IGC-Remittance Processing-UnAlloc	-	-	-	-	-	-	-	9,507	9,507
101000	137000	Chief Fiscal Officer	404,495	558	405,053	-	405,053	(405,053)	-	(18,290)	(18,290)
101000	137079	IGC-CFO-UnAlloc	-	-	-	-	-	-	-	18,290	18,290
101000	138100	Purchasing Services	1,855,804	174,562	2,030,366	-	2,030,366	(2,030,366)	-	(93,158)	(93,158)
101000	138179	IGC-Purchasing-UnAlloc	-	-	-	-	-	-	-	93,158	93,158
101000	139100	Management & Budget	1,047,406	100,396	1,147,802	11,062	1,136,740	(1,147,802)	-	(62,959)	(62,959)
101000	139179	IGC-OMB-UnAlloc	-	-	-	-	-	-	-	62,964	62,964
607000	141100	Admin Support	1,203,516	543,504	1,747,020	956	1,746,064	(1,747,020)	-	(59,862)	(59,862)
607000	141179	IGC-IT 607-UnAlloc	-	-	-	-	-	-	-	2,259,761	2,259,761
101000	142300	Reprographics	1,008,235	247,200	1,255,434	-	1,255,434	(1,255,434)	-	(42,014)	(42,014)
101000	142371	IGC-Repro	-	898,897	898,897	-	898,897	(898,897)	-	-	-
101000	142379	IGC-Repro (Mail Room)-UnAlloc	-	-	-	-	-	-	-	44,442	44,442
101000	142400	Records Management	178,097	24,124	202,222	1,519	200,703	(200,703)	1,519	(2,428)	-
607000	142500	IGC IT Fin Svcs	-	-	-	-	-	-	-	(15,515)	(15,515)
607000	143500	IGC - IT Security	696,916	72,663	769,579	-	769,579	(769,579)	-	-	-
607000	143571	IGC - IT Security - All	-	323,219	323,219	-	323,219	(323,219)	-	-	-
607000	143572	IGC - IT Security - No AWWU	-	446,350	446,350	-	446,350	(446,350)	-	-	-
607000	144000	Fixed Assets	297,230	-	297,230	189,059	108,171	(297,230)	-	-	-
607000	144003	IGC - Microsoft EA SW & HW upgrds	1,394,991	-	1,394,991	-	1,394,991	(1,394,991)	-	-	-
607000	145100	Application Services	2,238,296	338,516	2,576,811	-	2,576,811	(2,576,811)	-	(96,569)	(96,569)
607000	145500	ERP Services	-	-	-	-	-	-	-	(1,644)	(1,644)
607000	146200	IGC - SAP Support Centr	7,763,734	650,216	8,413,950	999,186	7,414,765	(8,413,950)	-	(49,486)	(49,486)
607000	146279	IGC - SAP Capital Recovery	-	-	-	-	-	(9,837,488)	-	49,486	49,486
607000	147300	Projects & Procurement	906,026	169,264	1,075,290	-	1,075,290	(1,075,290)	-	(52,941)	(52,941)
607000	148100	Desktop Services	1,795,795	241,614	2,037,409	-	2,037,409	(2,037,409)	-	(221,316)	(221,316)
607000	148200	Network Services	5,031,042	338,847	5,369,890	-	5,369,890	(5,369,890)	-	(1,785,130)	(1,785,130)
607000	148271	IGC - Netwk Svcs - Servers	-	2,803,787	2,803,787	-	2,803,787	(2,803,787)	-	-	-
607000	148272	IGC - Netwk Svcs - Network	-	1,678,731	1,678,731	-	1,678,731	(1,678,731)	-	-	-
607000	148273	IGC - Netwk Svcs - Phones	-	882,554	882,554	-	882,554	(882,554)	-	-	-
607000	148300	Technology Services	762,347	-	762,347	-	762,347	(762,347)	-	(26,785)	(26,785)
607000	149001	CAMA Depreciation	-	-	-	-	-	-	-	-	-

Using Results as of December 31, 2020

Central Services  
2018  
2020

Fund	Cost Center	Description	Using Results as of December 31, 2020					Amount (Over)/Under Billed if 100% Revenue Supported	2018	2020	
			Direct Expenditures	IGC Expenditures (Direct and Indirect)	Total Expenditures - Direct and IGC	Non-Allowable Expenditures (1)	Total Allowable Expenditures		Billing (IGC) and Program Revenues	Amount (Over)/Under Billed if 100% Revenue Supported	Carry Forward Adjustment (2)
101000	181000	Employee Relations Admin	362,699	94,649	457,348	26,081	431,267	(457,348)	-	(19,796)	(19,796)
101000	181079	IGC-ER-UnAlloc	-	-	-	-	-	-	-	167,415	167,415
101000	184100	Labor Relations	1,208,006	341,475	1,549,481	3,000	1,546,481	(1,549,481)	-	(63,699)	(63,699)
101000	184500	Employment	1,448,992	524,938	1,973,931	-	1,973,931	(1,973,931)	-	(67,798)	(67,798)
101000	187100	Benefits	450,066	203,598	653,664	-	653,664	(653,664)	-	(16,121)	(16,121)
101000	510500	OECD Admin	528,943	191,901	720,844	62,167	658,677	(720,844)	-	(36,839)	(36,839)
101000	510579	OECD Admin UnAlloc	-	-	-	-	-	-	-	62,981	62,981
101000	510600	OECD Data & Analytics	887,224	30,854	918,078	-	918,078	(918,078)	-	(26,143)	(26,143)
101000	510671	IGC-OECD GIS Licensing	-	277,945	277,945	-	277,945	(277,945)	-	-	-
101000	510672	IGC-OECD GIS Enterprise Program	-	539,272	539,272	-	539,272	(539,272)	-	-	-
101000	510673	IGC-OECD GIS Dept Support	-	100,843	100,843	-	100,843	(100,843)	-	-	-
101000	710500	Facility Maintenance	4,446,675	1,053,529	5,500,204	675,963	4,824,241	(5,500,204)	-	(916,838)	(916,838)
101000	710503	Facilities-Girdwood	26,438	24,901	51,338	-	51,338	(51,338)	-	-	-
101000	710506	Facilities-Eagle River Town Center	110,113	90,937	201,050	-	201,050	(201,050)	-	-	-
101000	710509	Facilities-Fire Stations	1,435,560	1,023,869	2,459,429	-	2,459,429	(2,459,429)	-	-	-
101000	710512	Facilities-Libraries	1,543,890	1,314,236	2,858,127	-	2,858,127	(2,858,127)	-	(3,368)	(3,368)
101000	710515	Facilities-Fac Maint Whse	214,238	164,875	379,112	-	379,112	(379,112)	-	-	-
101000	710518	Facilities-Traffic	53,794	41,989	95,783	-	95,783	(95,783)	-	-	-
101000	710521	Facilities-RES/Historical Property	29,526	30,920	60,446	-	60,446	(60,446)	-	-	-
101000	710524	Facilities-Areawide Parks & Rec	420,624	380,965	801,589	-	801,589	(801,589)	-	-	-
101000	710527	Facilities-Health and Human Services	709,974	477,026	1,187,000	-	1,187,000	(1,187,000)	-	-	-
101000	710530	Facilities-ARDSA	4,415	4,509	8,925	-	8,925	(8,925)	-	-	-
101000	710533	Facilities-Transit/Centers/Park & Rides	1,132,678	805,897	1,938,575	-	1,938,575	(1,938,575)	-	-	-
101000	710536	Facilities-Fleet Maint	217,353	168,071	385,424	-	385,424	(385,424)	-	-	-
101000	710539	Facilities-Police / Substations	874,583	738,796	1,613,378	-	1,613,378	(1,613,378)	-	-	-
101000	710542	Facilities-Eagle River Parks & Rec	850	1,081	1,931	-	1,931	(1,931)	-	-	-
101000	710545	Facilities-City Hall	161,319	82,385	243,704	-	243,704	(243,704)	-	-	-
101000	710548	Facilities-Eagle River Parks & Rec Cha	655	753	1,408	-	1,408	(1,408)	-	-	-
101000	710551	Facilities-Eagle River Parks & Rec Pod	13,694	15,795	29,489	-	29,489	(29,489)	-	-	-
101000	710554	Facilities-Areawide Parks & Rec Pools	55,146	63,960	119,106	-	119,106	(119,106)	-	-	-
101000	710557	Facilities-Heritage Land Bank	18,051	12,088	30,139	-	30,139	(30,139)	-	-	-
101000	710560	Facilities-Chugiak Fire Service Area	22,949	21,142	44,092	-	44,092	(44,092)	-	-	-
101000	710562	Facilities-CBERRRSA	-	-	-	-	-	-	-	-	-
101000	710563	Facilities-NC HJ Mac Mem Ctr	10,956	-	10,956	-	10,956	(10,956)	-	-	-
101000	710566	Facilities-NC Sullivan Arena	5,421	-	5,421	-	5,421	(5,421)	-	-	-
101000	710569	Facilities-NC Egan Center	6,392	-	6,392	-	6,392	(6,392)	-	-	-
101000	710572	Facilities-NC Dena'ina Center	92	-	92	-	92	(92)	-	-	-
101000	710575	Facilities-NC Performing Arts Center	37,823	-	37,823	-	37,823	(37,823)	-	-	-
101000	710581	Facilities-NC Anchorage Museum	3,462	-	3,462	-	3,462	(3,462)	-	-	-
101000	710583	Facilities-Permit Center	-	1	1	-	1	(1)	-	-	-
101000	710585	IGC Facilities UnAlloc	-	-	-	-	-	-	-	954,192	954,192
101000	710800	Facility Capital Improvements	1,162,000	11,535	1,173,535	797,706	375,829	(1,173,535)	-	(33,986)	(33,986)
Total Indirect Central Services 100%			69,639,984	23,574,424	93,214,408	4,235,105	88,979,303	(103,050,377)	1,519	(122,547)	(120,119)

Central Service Adjustment for Non-allowable Expenditures and Overbillings

Total Amount Over Billed	-
Total Amount Non-Allowable (1)	4,235,105
Total CarryForward Adjustment if Over Billed (2)	120,119
Total Adjustment	4,355,224
Total Billings	103,050,377
Adjustment Percentage for Non-Allowable Costs and Overbillings	4.23%



CSP Cat.	Department	Cost Center Description	Fiscal		Cost		Actuals
			Year	Fund	Center	Acct	
CS	Assembly	Clerk-Agenda Control	2020	101000	102003	501010	122,001.92
CS	Assembly	Clerk-Agenda Control	2020	101000	102003	501020	4,410.58
CS	Assembly	Clerk-Agenda Control	2020	101000	102003	501040	10,379.24
CS	Assembly	Clerk-Agenda Control	2020	101000	102003	501080	29,626.86
CS	Assembly	Clerk-Agenda Control	2020	101000	102003	501090	97.27
CS	Assembly	Clerk-Agenda Control	2020	101000	102003	501100	55,000.11
CS	Assembly	Clerk-Agenda Control	2020	101000	102003	501105	10,180.32
CS	Assembly	Clerk-Agenda Control	2020	101000	102003	501115	52.23
CS	Assembly	Clerk-Agenda Control	2020	101000	102003	501130	268.94
CS	Assembly	Clerk-Agenda Control	2020	101000	102003	501140	175.10
CS	Assembly	Clerk-Municipal Audit	2020	101000	102006	530380	442,694.00
CS	Assembly	Clerk-Liquor License	2020	101000	102007	501010	38,379.90
CS	Assembly	Clerk-Liquor License	2020	101000	102007	501020	134.18
CS	Assembly	Clerk-Liquor License	2020	101000	102007	501040	2,334.92
CS	Assembly	Clerk-Liquor License	2020	101000	102007	501080	8,836.08
CS	Assembly	Clerk-Liquor License	2020	101000	102007	501090	32.64
CS	Assembly	Clerk-Liquor License	2020	101000	102007	501100	18,324.99
CS	Assembly	Clerk-Liquor License	2020	101000	102007	501105	3,007.97
CS	Assembly	Clerk-Liquor License	2020	101000	102007	501115	17.47
CS	Assembly	Clerk-Liquor License	2020	101000	102007	501130	80.23
CS	Assembly	Clerk-Liquor License	2020	101000	102007	501140	54.03
CS	Assembly	Ombudsman	2020	101000	103000	501010	161,141.15
CS	Assembly	Ombudsman	2020	101000	103000	501040	9,460.32
CS	Assembly	Ombudsman	2020	101000	103000	501080	33,177.43
CS	Assembly	Ombudsman	2020	101000	103000	501090	87.58
CS	Assembly	Ombudsman	2020	101000	103000	501100	29,443.00
CS	Assembly	Ombudsman	2020	101000	103000	501105	12,933.93
CS	Assembly	Ombudsman	2020	101000	103000	501115	47.52
CS	Assembly	Ombudsman	2020	101000	103000	501130	331.74
CS	Assembly	Ombudsman	2020	101000	103000	501140	211.33
CS	Assembly	Ombudsman	2020	101000	103000	511010	1,772.61
CS	Assembly	Ombudsman	2020	101000	103000	511050	145.08
CS	Assembly	Ombudsman	2020	101000	103000	530360	845.00
CS	Assembly	Ombudsman	2020	101000	103000	530380	540.00
CS	Assembly	Ombudsman	2020	101000	103000	540040	300.00
CS	Assembly	Ombudsman	2020	101000	103000	540200	3,342.00
CS	Assembly	Ombudsman	2020	101000	103000	540242	230.39
CS	Assembly	Ombudsman	2020	101000	103000	540650	1,730.74
CS	Assembly	Ombudsman	2020	101000	103000	590210	1,564.18
CS	Internal Audit	Internal Audit	2020	101000	106000	501010	468,536.76
CS	Internal Audit	Internal Audit	2020	101000	106000	501040	34,229.03
CS	Internal Audit	Internal Audit	2020	101000	106000	501080	104,713.01
CS	Internal Audit	Internal Audit	2020	101000	106000	501090	245.69
CS	Internal Audit	Internal Audit	2020	101000	106000	501100	129,715.00
CS	Internal Audit	Internal Audit	2020	101000	106000	501105	37,850.35
CS	Internal Audit	Internal Audit	2020	101000	106000	501115	142.56
CS	Internal Audit	Internal Audit	2020	101000	106000	501130	988.84
CS	Internal Audit	Internal Audit	2020	101000	106000	501140	636.18
CS	Internal Audit	Internal Audit	2020	101000	106000	511000	345.03
CS	Internal Audit	Internal Audit	2020	101000	106000	511010	94.54
CS	Internal Audit	Internal Audit	2020	101000	106000	511330	53.36
CS	Internal Audit	Internal Audit	2020	101000	106000	540040	825.00
CS	Internal Audit	Internal Audit	2020	101000	106000	540050	200.00
CS	Internal Audit	Internal Audit	2020	101000	106000	540220	73.38
CS	Internal Audit	Internal Audit	2020	101000	106000	540242	759.80
CS	Internal Audit	Internal Audit	2020	101000	106000	540300	3,960.00
CS	Mayor	Mayor	2020	101000	111100	501010	730,565.89
CS	Mayor	Mayor	2020	101000	111100	501040	69,926.74
CS	Mayor	Mayor	2020	101000	111100	501080	160,922.01
CS	Mayor	Mayor	2020	101000	111100	501090	306.83
CS	Mayor	Mayor	2020	101000	111100	501100	150,912.02
CS	Mayor	Mayor	2020	101000	111100	501105	60,369.00

CSP Cat.	Department	Cost Center Description	Fiscal		Cost		Actuals
			Year	Fund	Center	Acct	
CS	Mayor	Mayor	2020	101000	111100	501115	163.35
CS	Mayor	Mayor	2020	101000	111100	501130	1,313.27
CS	Mayor	Mayor	2020	101000	111100	501140	952.85
CS	Mayor	Mayor	2020	101000	111100	511000	1,322.05
CS	Mayor	Mayor	2020	101000	111100	511010	711.84
CS	Mayor	Mayor	2020	101000	111100	511040	600.00
CS	Mayor	Mayor	2020	101000	111100	511050	914.80
CS	Mayor	Mayor	2020	101000	111100	511330	26.19
CS	Mayor	Mayor	2020	101000	111100	520040	(874.96)
CS	Mayor	Mayor	2020	101000	111100	520060	823.04
CS	Mayor	Mayor	2020	101000	111100	520080	3,650.00
CS	Mayor	Mayor	2020	101000	111100	530060	136.75
CS	Mayor	Mayor	2020	101000	111100	530380	10,976.61
CS	Mayor	Mayor	2020	101000	111100	540040	5,450.00
CS	Mayor	Mayor	2020	101000	111100	540170	4,312.12
CS	Mayor	Mayor	2020	101000	111100	540190	7,265.93
CS	Mayor	Mayor	2020	101000	111100	540200	42.24
CS	Mayor	Mayor	2020	101000	111100	540242	1,705.02
CS	Mayor	Mayor	2020	101000	111100	540271	287.92
CS	Mayor	Mayor	2020	101000	111100	540300	2,616.00
CS	Mayor	Mayor	2020	101000	111100	540610	48.88
CS	Mayor	Mayor	2020	101000	111100	540650	1,631.97
CS	Municipal Manager	Office of Equal Opportunity	2020	101000	113200	501010	139,952.27
CS	Municipal Manager	Office of Equal Opportunity	2020	101000	113200	501020	1,519.70
CS	Municipal Manager	Office of Equal Opportunity	2020	101000	113200	501040	5,835.29
CS	Municipal Manager	Office of Equal Opportunity	2020	101000	113200	501080	32,119.61
CS	Municipal Manager	Office of Equal Opportunity	2020	101000	113200	501090	87.58
CS	Municipal Manager	Office of Equal Opportunity	2020	101000	113200	501100	29,443.00
CS	Municipal Manager	Office of Equal Opportunity	2020	101000	113200	501105	11,141.74
CS	Municipal Manager	Office of Equal Opportunity	2020	101000	113200	501115	47.52
CS	Municipal Manager	Office of Equal Opportunity	2020	101000	113200	501130	289.80
CS	Municipal Manager	Office of Equal Opportunity	2020	101000	113200	501140	206.00
CS	Municipal Manager	Office of Equal Opportunity	2020	101000	113200	511000	132.99
CS	Municipal Manager	Office of Equal Opportunity	2020	101000	113200	511010	313.75
CS	Municipal Manager	Office of Equal Opportunity	2020	101000	113200	520080	1,598.75
CS	Municipal Manager	Office of Equal Opportunity	2020	101000	113200	530380	4,446.25
CS	Municipal Manager	Office of Equal Opportunity	2020	101000	113200	540050	204.00
CS	Municipal Manager	Office of Equal Opportunity	2020	101000	113200	540130	500.00
CS	Municipal Manager	Office of Equal Opportunity	2020	101000	113200	540190	1,634.61
CS	Municipal Manager	Office of Equal Opportunity	2020	101000	113200	540242	309.44
CS	Municipal Manager	Office of Equal Opportunity	2020	101000	113200	540650	215.31
CS	Municipal Attorney	Civil Law	2020	101000	115100	501010	1,184,593.04
CS	Municipal Attorney	Civil Law	2020	101000	115100	501020	918.92
CS	Municipal Attorney	Civil Law	2020	101000	115100	501040	88,320.69
CS	Municipal Attorney	Civil Law	2020	101000	115100	501080	320,877.60
CS	Municipal Attorney	Civil Law	2020	101000	115100	501090	645.80
CS	Municipal Attorney	Civil Law	2020	101000	115100	501100	318,977.97
CS	Municipal Attorney	Civil Law	2020	101000	115100	501105	112,830.33
CS	Municipal Attorney	Civil Law	2020	101000	115100	501115	358.38
CS	Municipal Attorney	Civil Law	2020	101000	115100	501130	2,968.78
CS	Municipal Attorney	Civil Law	2020	101000	115100	501140	2,005.25
CS	Municipal Attorney	Civil Law	2020	101000	115100	511000	(640.89)
CS	Municipal Attorney	Civil Law	2020	101000	115100	511010	3,623.42
CS	Municipal Attorney	Civil Law	2020	101000	115100	511040	906.00
CS	Municipal Attorney	Civil Law	2020	101000	115100	511050	68.30
CS	Municipal Attorney	Civil Law	2020	101000	115100	530090	1,569.00
CS	Municipal Attorney	Civil Law	2020	101000	115100	530380	109,620.29
CS	Municipal Attorney	Civil Law	2020	101000	115100	540040	233.49
CS	Municipal Attorney	Civil Law	2020	101000	115100	540242	2,840.49
CS	Municipal Attorney	Civil Law	2020	101000	115100	540620	2,304.37
CS	Municipal Attorney	Civil Law	2020	101000	115100	540640	7,220.00
CS	Municipal Attorney	Civil Law	2020	101000	115100	540710	240.32

CSP Cat.	Department	Cost Center Description	Fiscal		Cost		Actuals
			Year	Fund	Center	Acct	
CS	Municipal Attorney	Criminal	2020	101000	115200	501010	1,937,235.56
CS	Municipal Attorney	Criminal	2020	101000	115200	501020	12,855.96
CS	Municipal Attorney	Criminal	2020	101000	115200	501040	97,937.22
CS	Municipal Attorney	Criminal	2020	101000	115200	501080	441,986.28
CS	Municipal Attorney	Criminal	2020	101000	115200	501090	1,146.94
CS	Municipal Attorney	Criminal	2020	101000	115200	501100	575,703.79
CS	Municipal Attorney	Criminal	2020	101000	115200	501105	154,014.31
CS	Municipal Attorney	Criminal	2020	101000	115200	501115	621.77
CS	Municipal Attorney	Criminal	2020	101000	115200	501130	4,045.72
CS	Municipal Attorney	Criminal	2020	101000	115200	501140	2,680.14
CS	Municipal Attorney	Criminal	2020	101000	115200	511000	4,268.12
CS	Municipal Attorney	Criminal	2020	101000	115200	511010	9,098.55
CS	Municipal Attorney	Criminal	2020	101000	115200	511030	499.00
CS	Municipal Attorney	Criminal	2020	101000	115200	511330	24.27
CS	Municipal Attorney	Criminal	2020	101000	115200	530060	196.50
CS	Municipal Attorney	Criminal	2020	101000	115200	530090	112.00
CS	Municipal Attorney	Criminal	2020	101000	115200	530380	5,148.86
CS	Municipal Attorney	Criminal	2020	101000	115200	540030	105,736.48
CS	Municipal Attorney	Criminal	2020	101000	115200	540170	1,442.72
CS	Municipal Attorney	Criminal	2020	101000	115200	540242	5,648.56
CS	Municipal Attorney	Criminal	2020	101000	115200	540300	3,996.00
CS	Municipal Attorney	Criminal	2020	101000	115200	540620	1,894.77
CS	Municipal Attorney	Criminal	2020	101000	115200	540710	240.32
CS	Municipal Attorney	Criminal	2020	101000	115200	550010	2,118.93
CS	Municipal Attorney	Administrative Hearing	2020	101000	115300	501010	174,419.61
CS	Municipal Attorney	Administrative Hearing	2020	101000	115300	501040	5,531.51
CS	Municipal Attorney	Administrative Hearing	2020	101000	115300	501080	38,643.35
CS	Municipal Attorney	Administrative Hearing	2020	101000	115300	501090	87.58
CS	Municipal Attorney	Administrative Hearing	2020	101000	115300	501100	50,136.00
CS	Municipal Attorney	Administrative Hearing	2020	101000	115300	501105	13,480.54
CS	Municipal Attorney	Administrative Hearing	2020	101000	115300	501115	47.52
CS	Municipal Attorney	Administrative Hearing	2020	101000	115300	501130	354.39
CS	Municipal Attorney	Administrative Hearing	2020	101000	115300	501140	236.86
CS	Municipal Attorney	Muni Attorney Administration	2020	101000	115400	501010	213,704.84
CS	Municipal Attorney	Muni Attorney Administration	2020	101000	115400	501040	9,466.81
CS	Municipal Attorney	Muni Attorney Administration	2020	101000	115400	501080	47,813.70
CS	Municipal Attorney	Muni Attorney Administration	2020	101000	115400	501090	89.18
CS	Municipal Attorney	Muni Attorney Administration	2020	101000	115400	501100	38,622.20
CS	Municipal Attorney	Muni Attorney Administration	2020	101000	115400	501105	16,678.54
CS	Municipal Attorney	Muni Attorney Administration	2020	101000	115400	501115	46.93
CS	Municipal Attorney	Muni Attorney Administration	2020	101000	115400	501130	439.89
CS	Municipal Attorney	Muni Attorney Administration	2020	101000	115400	501140	263.11
CS	Municipal Attorney	Muni Attorney Administration	2020	101000	115400	511010	942.25
CS	Municipal Attorney	Muni Attorney Administration	2020	101000	115400	530380	2,145.00
CS	Municipal Attorney	Muni Attorney Administration	2020	101000	115400	540040	350.00
CS	Municipal Attorney	Muni Attorney Administration	2020	101000	115400	540242	922.74
CS	Municipal Attorney	Muni Attorney Administration	2020	101000	115400	540640	403.08
CS	Municipal Manager	Muni Manager Admin	2020	101000	121000	501010	228,573.82
CS	Municipal Manager	Muni Manager Admin	2020	101000	121000	501040	57,823.45
CS	Municipal Manager	Muni Manager Admin	2020	101000	121000	501080	50,069.86
CS	Municipal Manager	Muni Manager Admin	2020	101000	121000	501090	93.07
CS	Municipal Manager	Muni Manager Admin	2020	101000	121000	501100	54,415.00
CS	Municipal Manager	Muni Manager Admin	2020	101000	121000	501105	17,617.32
CS	Municipal Manager	Muni Manager Admin	2020	101000	121000	501115	51.48
CS	Municipal Manager	Muni Manager Admin	2020	101000	121000	501130	565.99
CS	Municipal Manager	Muni Manager Admin	2020	101000	121000	501140	299.37
CS	Municipal Manager	Muni Manager Admin	2020	101000	121000	511000	368.94
CS	Municipal Manager	Muni Manager Admin	2020	101000	121000	511010	452.16
CS	Municipal Manager	Muni Manager Admin	2020	101000	121000	511050	200.00
CS	Municipal Manager	Muni Manager Admin	2020	101000	121000	540040	860.00
CS	Municipal Manager	Muni Manager Admin	2020	101000	121000	540170	1,123.66
CS	Municipal Manager	Muni Manager Admin	2020	101000	121000	540190	759.26

CSP Cat.	Department	Cost Center Description	Fiscal		Cost		Actuals
			Year	Fund	Center	Acct	
CS	Municipal Manager	Muni Manager Admin	2020	101000	121000	540242	962.21
CS	Municipal Manager	Muni Manager Admin	2020	101000	121000	540650	8,291.73
CS	Real Estate	Leases-Parking Garage	2020	101000	122301	540280	91,980.00
CS	Real Estate	Leases-City Hall	2020	101000	122302	540280	3,548,147.16
CS	Real Estate	Leases-City Hall	2020	101000	122302	580530	198,955.00
CS	Real Estate	Leases-ERTC	2020	101000	122303	530380	175.00
CS	Real Estate	Leases-ERTC	2020	101000	122303	540280	226,189.50
CS	Real Estate	Leases-ERTC	2020	101000	122303	580530	120,000.00
CS	Real Estate	Leases-Libraries	2020	101000	122304	540280	217,591.50
CS	Real Estate	Leases-Traffic	2020	101000	122306	540280	48,000.00
CS	Real Estate	Leases-Recreation	2020	101000	122307	540280	366,000.00
CS	Real Estate	Leases-Permit Center	2020	101000	122309	540280	2,064,073.86
CS	Real Estate	Leases-Police	2020	101000	122310	540280	37,296.00
CS	Municipal Manager	Office of Emergency Management	2020	101000	124200	501010	212,394.18
CS	Municipal Manager	Office of Emergency Management	2020	101000	124200	501020	18,003.33
CS	Municipal Manager	Office of Emergency Management	2020	101000	124200	501040	6,602.17
CS	Municipal Manager	Office of Emergency Management	2020	101000	124200	501080	51,437.21
CS	Municipal Manager	Office of Emergency Management	2020	101000	124200	501090	95.83
CS	Municipal Manager	Office of Emergency Management	2020	101000	124200	501100	52,685.00
CS	Municipal Manager	Office of Emergency Management	2020	101000	124200	501105	18,368.52
CS	Municipal Manager	Office of Emergency Management	2020	101000	124200	501115	68.61
CS	Municipal Manager	Office of Emergency Management	2020	101000	124200	501130	461.25
CS	Municipal Manager	Office of Emergency Management	2020	101000	124200	501140	327.89
CS	Municipal Manager	Office of Emergency Management	2020	101000	124200	511000	6,975.47
CS	Municipal Manager	Office of Emergency Management	2020	101000	124200	511010	192.04
CS	Municipal Manager	Office of Emergency Management	2020	101000	124200	511080	350.00
CS	Municipal Manager	Office of Emergency Management	2020	101000	124200	511090	9.00
CS	Municipal Manager	Office of Emergency Management	2020	101000	124200	511330	173.33
CS	Municipal Manager	Office of Emergency Management	2020	101000	124200	530060	26.00
CS	Municipal Manager	Office of Emergency Management	2020	101000	124200	530360	839.00
CS	Municipal Manager	Office of Emergency Management	2020	101000	124200	530380	17,174.65
CS	Municipal Manager	Office of Emergency Management	2020	101000	124200	540040	150.00
CS	Municipal Manager	Office of Emergency Management	2020	101000	124200	540170	13,493.35
CS	Municipal Manager	Office of Emergency Management	2020	101000	124200	540271	3,850.00
CS	Municipal Manager	Office of Emergency Management	2020	101000	124200	540300	14,693.00
CS	Municipal Manager	Office of Emergency Management	2020	101000	124200	540650	1,544.74
CS	Municipal Manager	Office of Emergency Management	2020	101000	124200	550080	2,098.53
CS	Municipal Manager	Office of Emergency Management	2020	101000	124200	570200	1,243.24
CS	Municipal Manager	Office of Emergency Management	2020	101000	124200	580010	329,329.21
CS	Municipal Manager	Office of Emergency Management	2020	101000	124200	580020	119,034.04
CS	Municipal Manager	Office of Emergency Management	2020	101000	124200	580030	3.43
CS	Municipal Manager	Office of Emergency Management	2020	101000	124200	580530	5,500.00
CS	Municipal Manager	Office of Emergency Management	2020	101000	124200	590230	3,688.00
CS	Municipal Manager	Risk Management	2020	101000	124700	501010	154,707.35
CS	Municipal Manager	Risk Management	2020	101000	124700	501040	4,231.07
CS	Municipal Manager	Risk Management	2020	101000	124700	501080	34,415.56
CS	Municipal Manager	Risk Management	2020	101000	124700	501090	79.97
CS	Municipal Manager	Risk Management	2020	101000	124700	501100	45,790.88
CS	Municipal Manager	Risk Management	2020	101000	124700	501105	11,720.97
CS	Municipal Manager	Risk Management	2020	101000	124700	501115	43.56
CS	Municipal Manager	Risk Management	2020	101000	124700	501130	312.13
CS	Municipal Manager	Risk Management	2020	101000	124700	501140	212.33
CS	Municipal Manager	Risk Management	2020	101000	124700	511000	2,013.83
CS	Municipal Manager	Risk Management	2020	101000	124700	520080	790.08
CS	Municipal Manager	Risk Management	2020	101000	124700	530060	46.75
CS	Municipal Manager	Risk Management	2020	101000	124700	540040	202.50
CS	Municipal Manager	Risk Management	2020	101000	124700	540050	2,246.43
CS	Municipal Manager	Risk Management	2020	101000	124700	540242	701.39
CS	Municipal Manager	Safety	2020	101000	124900	501010	80,084.42
CS	Municipal Manager	Safety	2020	101000	124900	501040	4,792.54
CS	Municipal Manager	Safety	2020	101000	124900	501080	19,304.14
CS	Municipal Manager	Safety	2020	101000	124900	501090	43.42

CSP Cat.	Department	Cost Center Description	Fiscal		Cost		Actuals
			Year	Fund	Center	Acct	
CS	Municipal Manager	Safety	2020	101000	124900	501100	4,340.00
CS	Municipal Manager	Safety	2020	101000	124900	501105	6,788.30
CS	Municipal Manager	Safety	2020	101000	124900	501115	23.36
CS	Municipal Manager	Safety	2020	101000	124900	501130	167.15
CS	Municipal Manager	Safety	2020	101000	124900	501140	111.77
CS	Municipal Manager	Safety	2020	101000	124900	511000	25,870.00
CS	Municipal Manager	Safety	2020	101000	124900	511050	3,600.00
CS	Municipal Manager	Safety	2020	101000	124900	540242	253.26
CS	Finance	Controller Administration	2020	101000	132100	501010	94,535.12
CS	Finance	Controller Administration	2020	101000	132100	501080	18,134.50
CS	Finance	Controller Administration	2020	101000	132100	501090	28.82
CS	Finance	Controller Administration	2020	101000	132100	501100	15,458.60
CS	Finance	Controller Administration	2020	101000	132100	501105	4,489.47
CS	Finance	Controller Administration	2020	101000	132100	501115	14.67
CS	Finance	Controller Administration	2020	101000	132100	501130	185.19
CS	Finance	Controller Administration	2020	101000	132100	501140	104.08
CS	Finance	Controller Administration	2020	101000	132100	511010	1,099.80
CS	Finance	Controller Administration	2020	101000	132100	530360	2,725.00
CS	Finance	Controller Administration	2020	101000	132100	530380	910.00
CS	Finance	Controller Administration	2020	101000	132100	540040	150.00
CS	Finance	Controller Administration	2020	101000	132100	540050	270.00
CS	Finance	Controller Administration	2020	101000	132100	540170	1,775.01
CS	Finance	Controller Administration	2020	101000	132100	540271	295.00
CS	Finance	Controller Administration	2020	101000	132100	540650	5,920.12
CS	Finance	Controller Administration	2020	101000	132100	560010	200.00
CS	Finance	Controller Administration	2020	101000	132100	590230	1,018.00
CS	Finance	Central Accounting	2020	101000	132200	501010	1,221,562.70
CS	Finance	Central Accounting	2020	101000	132200	501020	81,858.11
CS	Finance	Central Accounting	2020	101000	132200	501040	167,135.15
CS	Finance	Central Accounting	2020	101000	132200	501080	295,877.46
CS	Finance	Central Accounting	2020	101000	132200	501090	597.84
CS	Finance	Central Accounting	2020	101000	132200	501100	305,580.88
CS	Finance	Central Accounting	2020	101000	132200	501105	110,427.80
CS	Finance	Central Accounting	2020	101000	132200	501115	327.25
CS	Finance	Central Accounting	2020	101000	132200	501130	2,933.60
CS	Finance	Central Accounting	2020	101000	132200	501140	1,683.64
CS	Finance	Central Accounting	2020	101000	132200	511010	648.24
CS	Finance	Central Accounting	2020	101000	132200	530060	124.75
CS	Finance	Central Accounting	2020	101000	132200	540170	753.24
CS	Finance	Central Accounting	2020	101000	132200	540180	80.50
CS	Finance	Central Accounting	2020	101000	132200	540242	3,094.24
CS	Human Resources	Payroll	2020	101000	132300	501010	840,732.20
CS	Human Resources	Payroll	2020	101000	132300	501020	39,693.59
CS	Human Resources	Payroll	2020	101000	132300	501040	63,310.83
CS	Human Resources	Payroll	2020	101000	132300	501080	200,665.66
CS	Human Resources	Payroll	2020	101000	132300	501090	521.38
CS	Human Resources	Payroll	2020	101000	132300	501100	238,707.37
CS	Human Resources	Payroll	2020	101000	132300	501105	73,641.82
CS	Human Resources	Payroll	2020	101000	132300	501115	287.65
CS	Human Resources	Payroll	2020	101000	132300	501130	1,919.99
CS	Human Resources	Payroll	2020	101000	132300	501140	1,158.58
CS	Human Resources	Payroll	2020	101000	132300	511000	1,214.73
CS	Human Resources	Payroll	2020	101000	132300	511010	1,890.46
CS	Human Resources	Payroll	2020	101000	132300	511380	1,261.15
CS	Human Resources	Payroll	2020	101000	132300	530060	110.50
CS	Human Resources	Payroll	2020	101000	132300	530380	10,382.67
CS	Human Resources	Payroll	2020	101000	132300	540040	258.00
CS	Human Resources	Payroll	2020	101000	132300	540170	622.84
CS	Human Resources	Payroll	2020	101000	132300	540242	3,350.63
CS	Finance	Accounts Payable	2020	101000	132400	501010	134,471.30
CS	Finance	Accounts Payable	2020	101000	132400	501020	28,441.29
CS	Finance	Accounts Payable	2020	101000	132400	501040	5,597.74

CSP Cat.	Department	Cost Center Description	Fiscal		Cost		Actuals
			Year	Fund	Center	Acct	
CS	Finance	Accounts Payable	2020	101000	132400	501080	36,075.47
CS	Finance	Accounts Payable	2020	101000	132400	501090	63.92
CS	Finance	Accounts Payable	2020	101000	132400	501100	34,009.00
CS	Finance	Accounts Payable	2020	101000	132400	501105	12,731.89
CS	Finance	Accounts Payable	2020	101000	132400	501115	37.62
CS	Finance	Accounts Payable	2020	101000	132400	501130	333.50
CS	Finance	Accounts Payable	2020	101000	132400	501140	176.25
CS	Finance	Accounts Payable	2020	101000	132400	530060	59.50
CS	Finance	Accounts Payable	2020	101000	132400	540242	288.80
CS	Finance	Treasury Administration	2020	101000	134100	501010	186,186.90
CS	Finance	Treasury Administration	2020	101000	134100	501020	236.98
CS	Finance	Treasury Administration	2020	101000	134100	501040	17,425.12
CS	Finance	Treasury Administration	2020	101000	134100	501080	40,995.07
CS	Finance	Treasury Administration	2020	101000	134100	501090	87.58
CS	Finance	Treasury Administration	2020	101000	134100	501100	50,136.00
CS	Finance	Treasury Administration	2020	101000	134100	501105	15,499.29
CS	Finance	Treasury Administration	2020	101000	134100	501115	47.52
CS	Finance	Treasury Administration	2020	101000	134100	501130	401.07
CS	Finance	Treasury Administration	2020	101000	134100	501140	250.78
CS	Finance	Treasury Administration	2020	101000	134100	511000	500.77
CS	Finance	Treasury Administration	2020	101000	134100	511010	212.94
CS	Finance	Treasury Administration	2020	101000	134100	530380	114.24
CS	Finance	Treasury Administration	2020	101000	134100	540040	1,056.64
CS	Finance	Treasury Administration	2020	101000	134100	540220	44.43
CS	Finance	Treasury Administration	2020	101000	134100	540242	491.94
CS	Finance	Treasury Administration	2020	101000	134100	540440	347.96
CS	Finance	Treasury Administration	2020	101000	134100	560010	1,225.00
CS	Finance	Treasury Administration	2020	101000	134100	590230	1,693.50
CS	Finance	Revenue Management	2020	101000	134200	501010	1,183,733.44
CS	Finance	Revenue Management	2020	101000	134200	501020	20,987.43
CS	Finance	Revenue Management	2020	101000	134200	501040	74,836.86
CS	Finance	Revenue Management	2020	101000	134200	501080	276,915.26
CS	Finance	Revenue Management	2020	101000	134200	501090	768.91
CS	Finance	Revenue Management	2020	101000	134200	501100	398,324.66
CS	Finance	Revenue Management	2020	101000	134200	501105	94,718.43
CS	Finance	Revenue Management	2020	101000	134200	501115	415.71
CS	Finance	Revenue Management	2020	101000	134200	501130	2,523.37
CS	Finance	Revenue Management	2020	101000	134200	501140	1,651.23
CS	Finance	Revenue Management	2020	101000	134200	511000	6,355.04
CS	Finance	Revenue Management	2020	101000	134200	511010	2,197.66
CS	Finance	Revenue Management	2020	101000	134200	511080	14,005.71
CS	Finance	Revenue Management	2020	101000	134200	511360	595.18
CS	Finance	Revenue Management	2020	101000	134200	530050	2,610.39
CS	Finance	Revenue Management	2020	101000	134200	530060	55.00
CS	Finance	Revenue Management	2020	101000	134200	530360	11,429.00
CS	Finance	Revenue Management	2020	101000	134200	530380	14,610.79
CS	Finance	Revenue Management	2020	101000	134200	540030	1,050.00
CS	Finance	Revenue Management	2020	101000	134200	540040	5,121.32
CS	Finance	Revenue Management	2020	101000	134200	540050	468.00
CS	Finance	Revenue Management	2020	101000	134200	540180	43.48
CS	Finance	Revenue Management	2020	101000	134200	540200	42,210.50
CS	Finance	Revenue Management	2020	101000	134200	540220	8.05
CS	Finance	Revenue Management	2020	101000	134200	540242	3,377.87
CS	Finance	Revenue Management	2020	101000	134200	540610	4.26
CS	Finance	Revenue Management	2020	101000	134200	540650	36.99
CS	Finance	Revenue Management	2020	101000	134200	570210	1,624.95
CS	Finance	Revenue Management	2020	101000	134200	590210	10,408.62
CS	Finance	Revenue Management	2020	101000	134200	590220	604.79
CS	Finance	Revenue Management	2020	101000	134200	590230	9,277.89
CS	Finance	Tax Billing	2020	101000	134600	501010	281,928.17
CS	Finance	Tax Billing	2020	101000	134600	501020	4,806.90
CS	Finance	Tax Billing	2020	101000	134600	501040	56,963.85

CSP Cat.	Department	Cost Center Description	Fiscal		Cost		Actuals
			Year	Fund	Center	Acct	
CS	Finance	Tax Billing	2020	101000	134600	501080	67,884.95
CS	Finance	Tax Billing	2020	101000	134600	501090	255.87
CS	Finance	Tax Billing	2020	101000	134600	501100	126,649.06
CS	Finance	Tax Billing	2020	101000	134600	501105	25,624.68
CS	Finance	Tax Billing	2020	101000	134600	501115	139.18
CS	Finance	Tax Billing	2020	101000	134600	501130	676.41
CS	Finance	Tax Billing	2020	101000	134600	501140	416.35
CS	Finance	Tax Billing	2020	101000	134600	511000	8,674.50
CS	Finance	Tax Billing	2020	101000	134600	511010	870.75
CS	Finance	Tax Billing	2020	101000	134600	511080	49,305.55
CS	Finance	Tax Billing	2020	101000	134600	511360	217.59
CS	Finance	Tax Billing	2020	101000	134600	530050	484.95
CS	Finance	Tax Billing	2020	101000	134600	530060	58.00
CS	Finance	Tax Billing	2020	101000	134600	530377	5,251.83
CS	Finance	Tax Billing	2020	101000	134600	530380	12,233.65
CS	Finance	Tax Billing	2020	101000	134600	540010	559.30
CS	Finance	Tax Billing	2020	101000	134600	540030	22.00
CS	Finance	Tax Billing	2020	101000	134600	540040	4.17
CS	Finance	Tax Billing	2020	101000	134600	540200	3,250.00
CS	Finance	Tax Billing	2020	101000	134600	540242	1,480.18
CS	Finance	Tax Billing	2020	101000	134600	590210	2,804.21
CS	Finance	Tax Billing	2020	101000	134600	590220	4,102.35
CS	Finance	Tax Billing	2020	101000	134600	590230	1,855.37
CS	Finance	Remittance Processing	2020	101000	134700	501010	102,705.92
CS	Finance	Remittance Processing	2020	101000	134700	501020	1,990.40
CS	Finance	Remittance Processing	2020	101000	134700	501040	9,353.59
CS	Finance	Remittance Processing	2020	101000	134700	501080	23,568.20
CS	Finance	Remittance Processing	2020	101000	134700	501090	87.58
CS	Finance	Remittance Processing	2020	101000	134700	501100	50,136.00
CS	Finance	Remittance Processing	2020	101000	134700	501105	8,256.12
CS	Finance	Remittance Processing	2020	101000	134700	501115	47.52
CS	Finance	Remittance Processing	2020	101000	134700	501130	224.01
CS	Finance	Remittance Processing	2020	101000	134700	501140	141.31
CS	Finance	Remittance Processing	2020	101000	134700	511000	2,224.40
CS	Finance	Remittance Processing	2020	101000	134700	511010	403.15
CS	Finance	Remittance Processing	2020	101000	134700	530050	160.00
CS	Finance	Remittance Processing	2020	101000	134700	530360	3,593.04
CS	Finance	Remittance Processing	2020	101000	134700	530380	558.26
CS	Finance	Remittance Processing	2020	101000	134700	540200	13,378.20
CS	Finance	Remittance Processing	2020	101000	134700	540242	506.54
CS	Finance	Remittance Processing	2020	101000	134700	590210	1,951.16
CS	Finance	Remittance Processing	2020	101000	134700	590230	3,268.32
CS	Chief Fiscal Officer	Chief Fiscal Officer	2020	101000	137000	501010	205,696.08
CS	Chief Fiscal Officer	Chief Fiscal Officer	2020	101000	137000	501040	4,523.36
CS	Chief Fiscal Officer	Chief Fiscal Officer	2020	101000	137000	501080	45,166.33
CS	Chief Fiscal Officer	Chief Fiscal Officer	2020	101000	137000	501090	87.58
CS	Chief Fiscal Officer	Chief Fiscal Officer	2020	101000	137000	501100	50,136.00
CS	Chief Fiscal Officer	Chief Fiscal Officer	2020	101000	137000	501105	15,864.07
CS	Chief Fiscal Officer	Chief Fiscal Officer	2020	101000	137000	501115	50.30
CS	Chief Fiscal Officer	Chief Fiscal Officer	2020	101000	137000	501130	413.35
CS	Chief Fiscal Officer	Chief Fiscal Officer	2020	101000	137000	501140	276.53
CS	Chief Fiscal Officer	Chief Fiscal Officer	2020	101000	137000	511010	277.39
CS	Chief Fiscal Officer	Chief Fiscal Officer	2020	101000	137000	511050	39.00
CS	Chief Fiscal Officer	Chief Fiscal Officer	2020	101000	137000	520060	346.08
CS	Chief Fiscal Officer	Chief Fiscal Officer	2020	101000	137000	530380	76,668.14
CS	Chief Fiscal Officer	Chief Fiscal Officer	2020	101000	137000	540040	1,225.00
CS	Chief Fiscal Officer	Chief Fiscal Officer	2020	101000	137000	540170	2,255.08
CS	Chief Fiscal Officer	Chief Fiscal Officer	2020	101000	137000	540242	1,013.08
CS	Chief Fiscal Officer	Chief Fiscal Officer	2020	101000	137000	540271	458.07
CS	Purchasing	Purchasing Services	2020	101000	138100	501010	1,029,743.65
CS	Purchasing	Purchasing Services	2020	101000	138100	501020	24,842.63
CS	Purchasing	Purchasing Services	2020	101000	138100	501040	72,898.99

CSP Cat.	Department	Cost Center Description	Fiscal		Cost		Actuals
			Year	Fund	Center	Acct	
CS	Purchasing	Purchasing Services	2020	101000	138100	501080	245,166.48
CS	Purchasing	Purchasing Services	2020	101000	138100	501090	576.28
CS	Purchasing	Purchasing Services	2020	101000	138100	501100	283,450.36
CS	Purchasing	Purchasing Services	2020	101000	138100	501105	85,736.32
CS	Purchasing	Purchasing Services	2020	101000	138100	501115	312.48
CS	Purchasing	Purchasing Services	2020	101000	138100	501130	2,233.39
CS	Purchasing	Purchasing Services	2020	101000	138100	501140	1,449.47
CS	Purchasing	Purchasing Services	2020	101000	138100	501250	355.39
CS	Purchasing	Purchasing Services	2020	101000	138100	511000	3,493.87
CS	Purchasing	Purchasing Services	2020	101000	138100	511010	5,301.15
CS	Purchasing	Purchasing Services	2020	101000	138100	511050	460.00
CS	Purchasing	Purchasing Services	2020	101000	138100	520080	275.00
CS	Purchasing	Purchasing Services	2020	101000	138100	530060	151.25
CS	Purchasing	Purchasing Services	2020	101000	138100	530360	6,173.93
CS	Purchasing	Purchasing Services	2020	101000	138100	530380	84,349.67
CS	Purchasing	Purchasing Services	2020	101000	138100	540050	2,095.00
CS	Purchasing	Purchasing Services	2020	101000	138100	540170	1,066.92
CS	Purchasing	Purchasing Services	2020	101000	138100	540190	338.53
CS	Purchasing	Purchasing Services	2020	101000	138100	540200	111.39
CS	Purchasing	Purchasing Services	2020	101000	138100	540242	3,335.38
CS	Purchasing	Purchasing Services	2020	101000	138100	540271	506.30
CS	Purchasing	Purchasing Services	2020	101000	138100	540300	1,380.00
CS	Management & Budget	Management & Budget	2020	101000	139100	501010	505,323.40
CS	Management & Budget	Management & Budget	2020	101000	139100	501020	21,553.28
CS	Management & Budget	Management & Budget	2020	101000	139100	501040	50,914.91
CS	Management & Budget	Management & Budget	2020	101000	139100	501080	118,373.08
CS	Management & Budget	Management & Budget	2020	101000	139100	501090	219.25
CS	Management & Budget	Management & Budget	2020	101000	139100	501100	125,368.44
CS	Management & Budget	Management & Budget	2020	101000	139100	501105	43,136.19
CS	Management & Budget	Management & Budget	2020	101000	139100	501115	119.12
CS	Management & Budget	Management & Budget	2020	101000	139100	501130	1,139.47
CS	Management & Budget	Management & Budget	2020	101000	139100	501140	684.72
CS	Management & Budget	Management & Budget	2020	101000	139100	511000	338.28
CS	Management & Budget	Management & Budget	2020	101000	139100	511010	1,412.75
CS	Management & Budget	Management & Budget	2020	101000	139100	511080	66.72
CS	Management & Budget	Management & Budget	2020	101000	139100	511370	159.00
CS	Management & Budget	Management & Budget	2020	101000	139100	520040	961.66
CS	Management & Budget	Management & Budget	2020	101000	139100	530380	104,080.48
CS	Management & Budget	Management & Budget	2020	101000	139100	540040	725.00
CS	Management & Budget	Management & Budget	2020	101000	139100	540070	2,063.50
CS	Management & Budget	Management & Budget	2020	101000	139100	540170	1,418.58
CS	Management & Budget	Management & Budget	2020	101000	139100	540200	56,488.89
CS	Management & Budget	Management & Budget	2020	101000	139100	540242	1,013.09
CS	Management & Budget	Management & Budget	2020	101000	139100	540260	250.46
CS	Management & Budget	Management & Budget	2020	101000	139100	540271	98.73
CS	Management & Budget	Management & Budget	2020	101000	139100	540650	434.99
CS	Management & Budget	Management & Budget	2020	101000	139100	570210	11,061.97
CS	Information Technology	Reprographics	2020	101000	142300	501010	284,667.09
CS	Information Technology	Reprographics	2020	101000	142300	501020	623.72
CS	Information Technology	Reprographics	2020	101000	142300	501040	53,058.93
CS	Information Technology	Reprographics	2020	101000	142300	501080	68,075.66
CS	Information Technology	Reprographics	2020	101000	142300	501090	205.97
CS	Information Technology	Reprographics	2020	101000	142300	501100	97,649.56
CS	Information Technology	Reprographics	2020	101000	142300	501105	25,792.79
CS	Information Technology	Reprographics	2020	101000	142300	501115	112.54
CS	Information Technology	Reprographics	2020	101000	142300	501130	678.65
CS	Information Technology	Reprographics	2020	101000	142300	501140	409.91
CS	Information Technology	Reprographics	2020	101000	142300	511000	41,896.09
CS	Information Technology	Reprographics	2020	101000	142300	511050	324.50
CS	Information Technology	Reprographics	2020	101000	142300	511080	260,000.00
CS	Information Technology	Reprographics	2020	101000	142300	511330	1,392.55
CS	Information Technology	Reprographics	2020	101000	142300	530360	3,645.00



CSP Cat.	Department	Cost Center Description	Fiscal		Cost		Actuals
			Year	Fund	Center	Acct	
CS	Information Technology	Reprographics	2020	101000	142300	540160	22,533.97
CS	Information Technology	Reprographics	2020	101000	142300	540200	4,197.12
CS	Information Technology	Reprographics	2020	101000	142300	540242	1,165.24
CS	Information Technology	Reprographics	2020	101000	142300	540250	129,604.30
CS	Information Technology	Reprographics	2020	101000	142300	540271	7,185.00
CS	Information Technology	Reprographics	2020	101000	142300	540300	5,016.00
CS	Information Technology	Records Management	2020	101000	142400	501010	71,986.84
CS	Information Technology	Records Management	2020	101000	142400	501020	13.10
CS	Information Technology	Records Management	2020	101000	142400	501040	1,257.12
CS	Information Technology	Records Management	2020	101000	142400	501080	15,809.21
CS	Information Technology	Records Management	2020	101000	142400	501090	43.79
CS	Information Technology	Records Management	2020	101000	142400	501100	25,068.00
CS	Information Technology	Records Management	2020	101000	142400	501105	5,272.36
CS	Information Technology	Records Management	2020	101000	142400	501115	23.76
CS	Information Technology	Records Management	2020	101000	142400	501130	143.72
CS	Information Technology	Records Management	2020	101000	142400	501140	96.87
CS	Information Technology	Records Management	2020	101000	142400	511410	2,393.00
CS	Information Technology	Records Management	2020	101000	142400	530380	42,366.09
CS	Information Technology	Records Management	2020	101000	142400	540040	215.00
CS	Information Technology	Records Management	2020	101000	142400	540271	5,990.00
CS	Information Technology	Records Management	2020	101000	142400	540640	5,900.00
CS	Information Technology	Records Management	2020	101000	142400	570210	1,518.51
CS	Human Resources	Employee Relations Admin	2020	101000	181000	501010	184,041.24
CS	Human Resources	Employee Relations Admin	2020	101000	181000	501020	120.51
CS	Human Resources	Employee Relations Admin	2020	101000	181000	501040	12,760.71
CS	Human Resources	Employee Relations Admin	2020	101000	181000	501080	40,762.03
CS	Human Resources	Employee Relations Admin	2020	101000	181000	501090	87.58
CS	Human Resources	Employee Relations Admin	2020	101000	181000	501100	50,136.00
CS	Human Resources	Employee Relations Admin	2020	101000	181000	501105	14,749.18
CS	Human Resources	Employee Relations Admin	2020	101000	181000	501115	47.52
CS	Human Resources	Employee Relations Admin	2020	101000	181000	501130	387.86
CS	Human Resources	Employee Relations Admin	2020	101000	181000	501140	249.94
CS	Human Resources	Employee Relations Admin	2020	101000	181000	511000	1,172.68
CS	Human Resources	Employee Relations Admin	2020	101000	181000	511010	8,462.48
CS	Human Resources	Employee Relations Admin	2020	101000	181000	511080	165.00
CS	Human Resources	Employee Relations Admin	2020	101000	181000	511360	1,849.16
CS	Human Resources	Employee Relations Admin	2020	101000	181000	511380	12,175.86
CS	Human Resources	Employee Relations Admin	2020	101000	181000	520040	1,473.78
CS	Human Resources	Employee Relations Admin	2020	101000	181000	520080	968.00
CS	Human Resources	Employee Relations Admin	2020	101000	181000	530130	20,000.00
CS	Human Resources	Employee Relations Admin	2020	101000	181000	530380	1,503.32
CS	Human Resources	Employee Relations Admin	2020	101000	181000	540050	(550.00)
CS	Human Resources	Employee Relations Admin	2020	101000	181000	540170	4,625.81
CS	Human Resources	Employee Relations Admin	2020	101000	181000	540200	850.00
CS	Human Resources	Employee Relations Admin	2020	101000	181000	540220	58.66
CS	Human Resources	Employee Relations Admin	2020	101000	181000	540242	521.15
CS	Human Resources	Employee Relations Admin	2020	101000	181000	570210	6,081.01
CS	Human Resources	Labor Relations	2020	101000	184100	501010	673,640.10
CS	Human Resources	Labor Relations	2020	101000	184100	501020	4,266.23
CS	Human Resources	Labor Relations	2020	101000	184100	501040	41,306.04
CS	Human Resources	Labor Relations	2020	101000	184100	501080	153,802.79
CS	Human Resources	Labor Relations	2020	101000	184100	501090	394.11
CS	Human Resources	Labor Relations	2020	101000	184100	501100	225,612.00
CS	Human Resources	Labor Relations	2020	101000	184100	501105	53,845.38
CS	Human Resources	Labor Relations	2020	101000	184100	501115	213.84
CS	Human Resources	Labor Relations	2020	101000	184100	501130	1,420.10
CS	Human Resources	Labor Relations	2020	101000	184100	501140	936.77
CS	Human Resources	Labor Relations	2020	101000	184100	511000	201.43
CS	Human Resources	Labor Relations	2020	101000	184100	530380	44,594.32
CS	Human Resources	Labor Relations	2020	101000	184100	540200	2,550.96
CS	Human Resources	Labor Relations	2020	101000	184100	540220	90.85
CS	Human Resources	Labor Relations	2020	101000	184100	540242	2,131.12

CSP			Fiscal	Cost			
Cat.	Department	Cost Center Description	Year	Fund	Center	Acct	Actuals
CS	Human Resources	Labor Relations	2020	101000	184100	570210	3,000.32
CS	Human Resources	Employment	2020	101000	184500	501010	786,579.83
CS	Human Resources	Employment	2020	101000	184500	501020	30,678.78
CS	Human Resources	Employment	2020	101000	184500	501040	34,929.56
CS	Human Resources	Employment	2020	101000	184500	501080	190,089.43
CS	Human Resources	Employment	2020	101000	184500	501090	524.05
CS	Human Resources	Employment	2020	101000	184500	501100	299,999.55
CS	Human Resources	Employment	2020	101000	184500	501105	65,168.82
CS	Human Resources	Employment	2020	101000	184500	501115	284.27
CS	Human Resources	Employment	2020	101000	184500	501130	1,724.65
CS	Human Resources	Employment	2020	101000	184500	501140	1,090.38
CS	Human Resources	Employment	2020	101000	184500	530060	193.70
CS	Human Resources	Employment	2020	101000	184500	530380	35,409.05
CS	Human Resources	Employment	2020	101000	184500	540242	2,320.41
CS	Human Resources	Benefits	2020	101000	187100	501010	216,138.73
CS	Human Resources	Benefits	2020	101000	187100	501040	10,166.33
CS	Human Resources	Benefits	2020	101000	187100	501080	48,685.68
CS	Human Resources	Benefits	2020	101000	187100	501090	114.91
CS	Human Resources	Benefits	2020	101000	187100	501100	53,324.25
CS	Human Resources	Benefits	2020	101000	187100	501105	16,936.36
CS	Human Resources	Benefits	2020	101000	187100	501115	62.14
CS	Human Resources	Benefits	2020	101000	187100	501118	4,035.35
CS	Human Resources	Benefits	2020	101000	187100	501130	445.13
CS	Human Resources	Benefits	2020	101000	187100	501140	293.44
CS	Human Resources	Benefits	2020	101000	187100	530380	87,133.50
CS	Human Resources	Benefits	2020	101000	187100	540242	996.12
CS	Human Resources	Benefits	2020	101000	187100	590160	11,733.80
CS	Economic & Community [ OECD Admin		2020	101000	510500	501010	325,253.02
CS	Economic & Community [ OECD Admin		2020	101000	510500	501020	73.84
CS	Economic & Community [ OECD Admin		2020	101000	510500	501040	10,374.97
CS	Economic & Community [ OECD Admin		2020	101000	510500	501080	71,898.80
CS	Economic & Community [ OECD Admin		2020	101000	510500	501090	130.73
CS	Economic & Community [ OECD Admin		2020	101000	510500	501100	74,838.43
CS	Economic & Community [ OECD Admin		2020	101000	510500	501105	25,264.22
CS	Economic & Community [ OECD Admin		2020	101000	510500	501115	70.59
CS	Economic & Community [ OECD Admin		2020	101000	510500	501130	660.91
CS	Economic & Community [ OECD Admin		2020	101000	510500	501140	427.94
CS	Economic & Community [ OECD Admin		2020	101000	510500	511000	368.94
CS	Economic & Community [ OECD Admin		2020	101000	510500	511010	284.50
CS	Economic & Community [ OECD Admin		2020	101000	510500	511050	1,161.00
CS	Economic & Community [ OECD Admin		2020	101000	510500	530360	9,185.22
CS	Economic & Community [ OECD Admin		2020	101000	510500	530380	1,900.04
CS	Economic & Community [ OECD Admin		2020	101000	510500	540040	3,190.00
CS	Economic & Community [ OECD Admin		2020	101000	510500	540050	697.00
CS	Economic & Community [ OECD Admin		2020	101000	510500	540170	2,035.24
CS	Economic & Community [ OECD Admin		2020	101000	510500	540242	506.54
CS	Economic & Community [ OECD Admin		2020	101000	510500	540380	90.76
CS	Economic & Community [ OECD Admin		2020	101000	510500	540610	92.78
CS	Economic & Community [ OECD Admin		2020	101000	510500	550010	437.73
CS	Economic & Community [ OECD Data & Analytics		2020	101000	510600	501010	309,291.43
CS	Economic & Community [ OECD Data & Analytics		2020	101000	510600	501020	550.15
CS	Economic & Community [ OECD Data & Analytics		2020	101000	510600	501040	38,174.03
CS	Economic & Community [ OECD Data & Analytics		2020	101000	510600	501080	70,659.31
CS	Economic & Community [ OECD Data & Analytics		2020	101000	510600	501090	140.39
CS	Economic & Community [ OECD Data & Analytics		2020	101000	510600	501100	78,846.00
CS	Economic & Community [ OECD Data & Analytics		2020	101000	510600	501105	25,487.68
CS	Economic & Community [ OECD Data & Analytics		2020	101000	510600	501115	75.24
CS	Economic & Community [ OECD Data & Analytics		2020	101000	510600	501130	683.39
CS	Economic & Community [ OECD Data & Analytics		2020	101000	510600	501140	425.80
CS	Economic & Community [ OECD Data & Analytics		2020	101000	510600	511000	24.98
CS	Economic & Community [ OECD Data & Analytics		2020	101000	510600	520060	(971.05)
CS	Economic & Community [ OECD Data & Analytics		2020	101000	510600	530060	41.25

CSP Cat.	Department	Cost Center Description	Fiscal		Cost		Actuals
			Year	Fund	Center	Acct	
CS	Economic & Community I	OECD Data & Analytics	2020	101000	510600	530380	81,182.00
CS	Economic & Community I	OECD Data & Analytics	2020	101000	510600	540070	1,863.34
CS	Economic & Community I	OECD Data & Analytics	2020	101000	510600	540200	279,990.00
CS	Economic & Community I	OECD Data & Analytics	2020	101000	510600	540242	759.80
CS	Maintenance & Operation	Facility Maintenance	2020	101000	710500	501010	2,008,282.37
CS	Maintenance & Operation	Facility Maintenance	2020	101000	710500	501020	53,479.86
CS	Maintenance & Operation	Facility Maintenance	2020	101000	710500	501040	110,518.05
CS	Maintenance & Operation	Facility Maintenance	2020	101000	710500	501080	451,386.15
CS	Maintenance & Operation	Facility Maintenance	2020	101000	710500	501090	1,069.12
CS	Maintenance & Operation	Facility Maintenance	2020	101000	710500	501100	614,549.91
CS	Maintenance & Operation	Facility Maintenance	2020	101000	710500	501105	163,157.35
CS	Maintenance & Operation	Facility Maintenance	2020	101000	710500	501115	580.08
CS	Maintenance & Operation	Facility Maintenance	2020	101000	710500	501118	6,589.16
CS	Maintenance & Operation	Facility Maintenance	2020	101000	710500	501130	4,268.58
CS	Maintenance & Operation	Facility Maintenance	2020	101000	710500	501140	1,383.44
CS	Maintenance & Operation	Facility Maintenance	2020	101000	710500	501160	2,000.00
CS	Maintenance & Operation	Facility Maintenance	2020	101000	710500	501240	301.44
CS	Maintenance & Operation	Facility Maintenance	2020	101000	710500	511000	85,263.65
CS	Maintenance & Operation	Facility Maintenance	2020	101000	710500	511010	3,151.69
CS	Maintenance & Operation	Facility Maintenance	2020	101000	710500	511330	14,766.12
CS	Maintenance & Operation	Facility Maintenance	2020	101000	710500	511340	9,579.81
CS	Maintenance & Operation	Facility Maintenance	2020	101000	710500	530360	38,895.97
CS	Maintenance & Operation	Facility Maintenance	2020	101000	710500	540170	12,747.19
CS	Maintenance & Operation	Facility Maintenance	2020	101000	710500	540300	185,976.00
CS	Maintenance & Operation	Facility Maintenance	2020	101000	710500	540610	450.26
CS	Maintenance & Operation	Facility Maintenance	2020	101000	710500	540640	2,111.00
CS	Maintenance & Operation	Facility Maintenance	2020	101000	710500	550010	204.90
CS	Maintenance & Operation	Facility Maintenance	2020	101000	710500	580530	675,963.00
CS	Maintenance & Operation	Facilities-Girdwood	2020	101000	710503	511000	6,196.89
CS	Maintenance & Operation	Facilities-Girdwood	2020	101000	710503	530360	6,067.33
CS	Maintenance & Operation	Facilities-Girdwood	2020	101000	710503	540170	124.11
CS	Maintenance & Operation	Facilities-Girdwood	2020	101000	710503	540640	14,049.50
CS	Maintenance & Operation	Facilities-Eagle River Town Cen	2020	101000	710506	511000	8,386.86
CS	Maintenance & Operation	Facilities-Eagle River Town Cen	2020	101000	710506	530360	1,368.82
CS	Maintenance & Operation	Facilities-Eagle River Town Cen	2020	101000	710506	540640	8,310.00
CS	Maintenance & Operation	Facilities-Eagle River Town Cen	2020	101000	710506	550080	92,047.02
CS	Maintenance & Operation	Facilities-Fire Stations	2020	101000	710509	511000	117,254.87
CS	Maintenance & Operation	Facilities-Fire Stations	2020	101000	710509	530360	83,457.19
CS	Maintenance & Operation	Facilities-Fire Stations	2020	101000	710509	540170	127.05
CS	Maintenance & Operation	Facilities-Fire Stations	2020	101000	710509	540610	235.33
CS	Maintenance & Operation	Facilities-Fire Stations	2020	101000	710509	540640	312,335.68
CS	Maintenance & Operation	Facilities-Fire Stations	2020	101000	710509	550080	922,149.90
CS	Maintenance & Operation	Facilities-Libraries	2020	101000	710512	511000	24,899.71
CS	Maintenance & Operation	Facilities-Libraries	2020	101000	710512	530360	30,526.60
CS	Maintenance & Operation	Facilities-Libraries	2020	101000	710512	540170	2,001.93
CS	Maintenance & Operation	Facilities-Libraries	2020	101000	710512	540610	205.00
CS	Maintenance & Operation	Facilities-Libraries	2020	101000	710512	540640	1,017,142.03
CS	Maintenance & Operation	Facilities-Libraries	2020	101000	710512	550080	469,114.90
CS	Maintenance & Operation	Facilities-Fac Maint Whse	2020	101000	710515	511000	29,278.38
CS	Maintenance & Operation	Facilities-Fac Maint Whse	2020	101000	710515	530360	930.00
CS	Maintenance & Operation	Facilities-Fac Maint Whse	2020	101000	710515	540170	1,338.24
CS	Maintenance & Operation	Facilities-Fac Maint Whse	2020	101000	710515	540610	63.25
CS	Maintenance & Operation	Facilities-Fac Maint Whse	2020	101000	710515	540640	65,714.90
CS	Maintenance & Operation	Facilities-Fac Maint Whse	2020	101000	710515	550080	116,912.79
CS	Maintenance & Operation	Facilities-Traffic	2020	101000	710518	511000	7,247.99
CS	Maintenance & Operation	Facilities-Traffic	2020	101000	710518	530360	8,285.38
CS	Maintenance & Operation	Facilities-Traffic	2020	101000	710518	540640	216.80
CS	Maintenance & Operation	Facilities-Traffic	2020	101000	710518	550080	38,043.55
CS	Maintenance & Operation	Facilities-RES/Historical Proper	2020	101000	710521	511000	5,647.50
CS	Maintenance & Operation	Facilities-RES/Historical Proper	2020	101000	710521	530360	181.89
CS	Maintenance & Operation	Facilities-RES/Historical Proper	2020	101000	710521	540170	81.51
CS	Maintenance & Operation	Facilities-RES/Historical Proper	2020	101000	710521	540610	4.50

CSP Cat.	Department	Cost Center Description	Fiscal		Cost		Actuals
			Year	Fund	Center	Acct	
CS	Maintenance & Operation Facilities-RES/Historical Proper		2020	101000	710521	540640	8,121.39
CS	Maintenance & Operation Facilities-RES/Historical Proper		2020	101000	710521	550080	15,489.35
CS	Maintenance & Operation Facilities-Areawide Parks & Rec		2020	101000	710524	511000	58,990.26
CS	Maintenance & Operation Facilities-Areawide Parks & Rec		2020	101000	710524	530360	43,692.06
CS	Maintenance & Operation Facilities-Areawide Parks & Rec		2020	101000	710524	540170	1,670.35
CS	Maintenance & Operation Facilities-Areawide Parks & Rec		2020	101000	710524	540610	170.62
CS	Maintenance & Operation Facilities-Areawide Parks & Rec		2020	101000	710524	540640	278,515.94
CS	Maintenance & Operation Facilities-Areawide Parks & Rec		2020	101000	710524	550080	37,584.30
CS	Maintenance & Operation Facilities-Health and Human Se		2020	101000	710527	511000	29,393.91
CS	Maintenance & Operation Facilities-Health and Human Se		2020	101000	710527	530360	24,868.19
CS	Maintenance & Operation Facilities-Health and Human Se		2020	101000	710527	540170	438.57
CS	Maintenance & Operation Facilities-Health and Human Se		2020	101000	710527	540610	14.50
CS	Maintenance & Operation Facilities-Health and Human Se		2020	101000	710527	540640	334,533.89
CS	Maintenance & Operation Facilities-Health and Human Se		2020	101000	710527	550080	320,724.89
CS	Maintenance & Operation Facilities-ARDSA		2020	101000	710530	511000	10.98
CS	Maintenance & Operation Facilities-ARDSA		2020	101000	710530	530360	415.60
CS	Maintenance & Operation Facilities-ARDSA		2020	101000	710530	540640	3,445.95
CS	Maintenance & Operation Facilities-ARDSA		2020	101000	710530	550080	542.85
CS	Maintenance & Operation Facilities-Transit/Centers/Park &		2020	101000	710533	511000	62,304.07
CS	Maintenance & Operation Facilities-Transit/Centers/Park &		2020	101000	710533	530360	28,543.52
CS	Maintenance & Operation Facilities-Transit/Centers/Park &		2020	101000	710533	540170	1,656.07
CS	Maintenance & Operation Facilities-Transit/Centers/Park &		2020	101000	710533	540610	40.90
CS	Maintenance & Operation Facilities-Transit/Centers/Park &		2020	101000	710533	540640	280,186.17
CS	Maintenance & Operation Facilities-Transit/Centers/Park &		2020	101000	710533	550080	759,947.19
CS	Maintenance & Operation Facilities-Fleet Maint		2020	101000	710536	511000	20,826.14
CS	Maintenance & Operation Facilities-Fleet Maint		2020	101000	710536	530360	13,074.67
CS	Maintenance & Operation Facilities-Fleet Maint		2020	101000	710536	540170	91.08
CS	Maintenance & Operation Facilities-Fleet Maint		2020	101000	710536	540610	4.40
CS	Maintenance & Operation Facilities-Fleet Maint		2020	101000	710536	540640	24,722.15
CS	Maintenance & Operation Facilities-Fleet Maint		2020	101000	710536	550080	158,634.99
CS	Maintenance & Operation Facilities-Police / Substations		2020	101000	710539	511000	42,120.46
CS	Maintenance & Operation Facilities-Police / Substations		2020	101000	710539	511380	10,799.76
CS	Maintenance & Operation Facilities-Police / Substations		2020	101000	710539	530360	14,065.06
CS	Maintenance & Operation Facilities-Police / Substations		2020	101000	710539	540170	402.60
CS	Maintenance & Operation Facilities-Police / Substations		2020	101000	710539	540610	60.05
CS	Maintenance & Operation Facilities-Police / Substations		2020	101000	710539	540640	296,043.49
CS	Maintenance & Operation Facilities-Police / Substations		2020	101000	710539	550080	511,091.30
CS	Maintenance & Operation Facilities-Eagle River Parks & R		2020	101000	710542	511000	849.87
CS	Maintenance & Operation Facilities-City Hall		2020	101000	710545	511000	452.67
CS	Maintenance & Operation Facilities-City Hall		2020	101000	710545	530360	6,060.33
CS	Maintenance & Operation Facilities-City Hall		2020	101000	710545	540170	238.77
CS	Maintenance & Operation Facilities-City Hall		2020	101000	710545	540640	154,567.63
CS	Maintenance & Operation Facilities-Eagle River Parks & R		2020	101000	710548	511000	655.34
CS	Maintenance & Operation Facilities-Eagle River Parks & R		2020	101000	710551	511000	12,936.71
CS	Maintenance & Operation Facilities-Eagle River Parks & R		2020	101000	710551	540640	757.50
CS	Maintenance & Operation Facilities-Areawide Parks & Rec		2020	101000	710554	511000	44,633.85
CS	Maintenance & Operation Facilities-Areawide Parks & Rec		2020	101000	710554	530360	3,402.32
CS	Maintenance & Operation Facilities-Areawide Parks & Rec		2020	101000	710554	540610	4.40
CS	Maintenance & Operation Facilities-Areawide Parks & Rec		2020	101000	710554	540640	7,105.69
CS	Maintenance & Operation Facilities-Heritage Land Bank		2020	101000	710557	530360	2,798.99
CS	Maintenance & Operation Facilities-Heritage Land Bank		2020	101000	710557	540170	375.00
CS	Maintenance & Operation Facilities-Heritage Land Bank		2020	101000	710557	550080	14,877.34
CS	Maintenance & Operation Facilities-Chugiak Fire Service /		2020	101000	710560	511000	1,435.33
CS	Maintenance & Operation Facilities-Chugiak Fire Service /		2020	101000	710560	530360	375.00
CS	Maintenance & Operation Facilities-Chugiak Fire Service /		2020	101000	710560	540640	5,337.00
CS	Maintenance & Operation Facilities-Chugiak Fire Service /		2020	101000	710560	550080	15,802.16
CS	Maintenance & Operation Facilities-NC HJ Mac Mem Ctr		2020	101000	710563	511000	1,260.14
CS	Maintenance & Operation Facilities-NC HJ Mac Mem Ctr		2020	101000	710563	540640	9,695.63
CS	Maintenance & Operation Facilities-NC Sullivan Arena		2020	101000	710566	530360	769.60
CS	Maintenance & Operation Facilities-NC Sullivan Arena		2020	101000	710566	540640	4,651.00
CS	Maintenance & Operation Facilities-NC Egan Center		2020	101000	710569	511000	17.98
CS	Maintenance & Operation Facilities-NC Egan Center		2020	101000	710569	550080	6,374.44

CSP			Fiscal	Cost			
Cat.	Department	Cost Center Description	Year	Fund	Center	Acct	Actuals
CS	Maintenance & Operation Facilities-NC Dena'ina Center		2020	101000	710572	540640	92.00
CS	Maintenance & Operation Facilities-NC Performing Arts Ce		2020	101000	710575	530360	768.82
CS	Maintenance & Operation Facilities-NC Performing Arts Ce		2020	101000	710575	540610	2.00
CS	Maintenance & Operation Facilities-NC Performing Arts Ce		2020	101000	710575	540640	37,051.89
CS	Maintenance & Operation Facilities-NC Anchorage Museu		2020	101000	710581	511000	1,028.94
CS	Maintenance & Operation Facilities-NC Anchorage Museu		2020	101000	710581	540170	402.60
CS	Maintenance & Operation Facilities-NC Anchorage Museu		2020	101000	710581	540640	2,030.64
CS	Maintenance & Operation Facility Capital Improvements		2020	101000	710800	501010	192,233.87
CS	Maintenance & Operation Facility Capital Improvements		2020	101000	710800	501020	2,440.01
CS	Maintenance & Operation Facility Capital Improvements		2020	101000	710800	501040	42,405.74
CS	Maintenance & Operation Facility Capital Improvements		2020	101000	710800	501080	47,440.58
CS	Maintenance & Operation Facility Capital Improvements		2020	101000	710800	501090	88.83
CS	Maintenance & Operation Facility Capital Improvements		2020	101000	710800	501100	40,763.10
CS	Maintenance & Operation Facility Capital Improvements		2020	101000	710800	501105	17,673.23
CS	Maintenance & Operation Facility Capital Improvements		2020	101000	710800	501115	47.56
CS	Maintenance & Operation Facility Capital Improvements		2020	101000	710800	501130	465.20
CS	Maintenance & Operation Facility Capital Improvements		2020	101000	710800	501140	286.18
CS	Maintenance & Operation Facility Capital Improvements		2020	101000	710800	511330	1,093.13
CS	Maintenance & Operation Facility Capital Improvements		2020	101000	710800	530060	29.00
CS	Maintenance & Operation Facility Capital Improvements		2020	101000	710800	530360	2,535.55
CS	Maintenance & Operation Facility Capital Improvements		2020	101000	710800	540170	150.00
CS	Maintenance & Operation Facility Capital Improvements		2020	101000	710800	540300	14,034.00
CS	Maintenance & Operation Facility Capital Improvements		2020	101000	710800	540610	34.99
CS	Maintenance & Operation Facility Capital Improvements		2020	101000	710800	550010	2,572.54
CS	Maintenance & Operation Facility Capital Improvements		2020	101000	710800	580010	546,419.65
CS	Maintenance & Operation Facility Capital Improvements		2020	101000	710800	580020	251,284.36
CS	Maintenance & Operation Facility Capital Improvements		2020	101000	710800	580030	2.13
CS	Information Technology Admin Support		2020	607000	141100	501010	629,104.43
CS	Information Technology Admin Support		2020	607000	141100	501020	4,295.27
CS	Information Technology Admin Support		2020	607000	141100	501035	69,981.94
CS	Information Technology Admin Support		2020	607000	141100	501080	143,765.25
CS	Information Technology Admin Support		2020	607000	141100	501090	335.68
CS	Information Technology Admin Support		2020	607000	141100	501100	170,450.50
CS	Information Technology Admin Support		2020	607000	141100	501105	52,180.22
CS	Information Technology Admin Support		2020	607000	141100	501115	180.18
CS	Information Technology Admin Support		2020	607000	141100	501130	1,374.67
CS	Information Technology Admin Support		2020	607000	141100	501140	857.12
CS	Information Technology Admin Support		2020	607000	141100	511010	7,818.55
CS	Information Technology Admin Support		2020	607000	141100	511360	17,061.76
CS	Information Technology Admin Support		2020	607000	141100	520040	1,515.22
CS	Information Technology Admin Support		2020	607000	141100	520050	786.34
CS	Information Technology Admin Support		2020	607000	141100	520070	168.00
CS	Information Technology Admin Support		2020	607000	141100	530060	60.00
CS	Information Technology Admin Support		2020	607000	141100	530360	2,754.53
CS	Information Technology Admin Support		2020	607000	141100	530380	52,668.24
CS	Information Technology Admin Support		2020	607000	141100	540050	8,734.00
CS	Information Technology Admin Support		2020	607000	141100	540150	955.61
CS	Information Technology Admin Support		2020	607000	141100	540170	1,434.07
CS	Information Technology Admin Support		2020	607000	141100	540242	1,899.01
CS	Information Technology Admin Support		2020	607000	141100	540271	6,365.10
CS	Information Technology Admin Support		2020	607000	141100	540610	8.51
CS	Information Technology Admin Support		2020	607000	141100	540640	13,059.15
CS	Information Technology Admin Support		2020	607000	141100	572200	2,103.76
CS	Information Technology Admin Support		2020	607000	141100	572210	1,063.56
CS	Information Technology Admin Support		2020	607000	141100	590230	12,535.09
CS	Information Technology IGC - IT Security		2020	607000	143500	501010	299,369.99
CS	Information Technology IGC - IT Security		2020	607000	143500	501020	4,793.96
CS	Information Technology IGC - IT Security		2020	607000	143500	501035	29,187.47
CS	Information Technology IGC - IT Security		2020	607000	143500	501080	66,637.70
CS	Information Technology IGC - IT Security		2020	607000	143500	501090	113.07
CS	Information Technology IGC - IT Security		2020	607000	143500	501100	51,716.50
CS	Information Technology IGC - IT Security		2020	607000	143500	501105	24,760.49

CSP Cat.	Department	Cost Center Description	Fiscal		Cost		Actuals
			Year	Fund	Center	Acct	
CS	Information Technology	IGC - IT Security	2020	607000	143500	501115	61.38
CS	Information Technology	IGC - IT Security	2020	607000	143500	501130	646.19
CS	Information Technology	IGC - IT Security	2020	607000	143500	501140	383.47
CS	Information Technology	IGC - IT Security	2020	607000	143500	530380	3,870.00
CS	Information Technology	IGC - IT Security	2020	607000	143500	540050	25,658.55
CS	Information Technology	IGC - IT Security	2020	607000	143500	540200	16,571.09
CS	Information Technology	IGC - IT Security	2020	607000	143500	540242	152.61
CS	Information Technology	IGC - IT Security	2020	607000	143500	540260	1,500.00
CS	Information Technology	IGC - IT Security	2020	607000	143500	540271	122,667.83
CS	Information Technology	IGC - IT Security	2020	607000	143500	572210	324.43
CS	Information Technology	IGC - IT Security	2020	607000	143500	572220	48,501.30
CS	Information Technology	Fixed Assets	2020	607000	144000	572160	2,586.37
CS	Information Technology	Fixed Assets	2020	607000	144000	572200	964.28
CS	Information Technology	Fixed Assets	2020	607000	144000	572210	104,620.28
CS	Information Technology	Fixed Assets	2020	607000	144000	580080	183,308.84
CS	Information Technology	Fixed Assets	2020	607000	144000	580150	5,750.00
CS	Information Technology	IGC – Microsoft EA SW & HW	2020	607000	144003	540271	899,666.05
CS	Information Technology	IGC – Microsoft EA SW & HW	2020	607000	144003	572210	7,247.93
CS	Information Technology	IGC – Microsoft EA SW & HW	2020	607000	144003	572220	488,077.24
CS	Information Technology	Application Services	2020	607000	145100	501010	1,105,780.77
CS	Information Technology	Application Services	2020	607000	145100	501020	51,791.91
CS	Information Technology	Application Services	2020	607000	145100	501035	108,710.68
CS	Information Technology	Application Services	2020	607000	145100	501080	264,594.24
CS	Information Technology	Application Services	2020	607000	145100	501090	514.40
CS	Information Technology	Application Services	2020	607000	145100	501100	283,783.31
CS	Information Technology	Application Services	2020	607000	145100	501105	92,784.32
CS	Information Technology	Application Services	2020	607000	145100	501115	280.38
CS	Information Technology	Application Services	2020	607000	145100	501130	2,466.75
CS	Information Technology	Application Services	2020	607000	145100	501140	1,500.58
CS	Information Technology	Application Services	2020	607000	145100	501240	31.54
CS	Information Technology	Application Services	2020	607000	145100	511080	21.57
CS	Information Technology	Application Services	2020	607000	145100	530060	520.75
CS	Information Technology	Application Services	2020	607000	145100	530380	76,735.90
CS	Information Technology	Application Services	2020	607000	145100	540040	2,205.00
CS	Information Technology	Application Services	2020	607000	145100	540050	5,790.88
CS	Information Technology	Application Services	2020	607000	145100	540180	221.97
CS	Information Technology	Application Services	2020	607000	145100	540200	134,556.03
CS	Information Technology	Application Services	2020	607000	145100	540242	2,096.85
CS	Information Technology	Application Services	2020	607000	145100	540260	507.40
CS	Information Technology	Application Services	2020	607000	145100	540271	97,091.89
CS	Information Technology	Application Services	2020	607000	145100	572210	1,478.41
CS	Information Technology	Application Services	2020	607000	145100	572220	4,830.00
CS	Information Technology	IGC - SAP Support Centr	2020	607000	146200	501010	1,756,099.06
CS	Information Technology	IGC - SAP Support Centr	2020	607000	146200	501020	35,769.55
CS	Information Technology	IGC - SAP Support Centr	2020	607000	146200	501035	172,933.32
CS	Information Technology	IGC - SAP Support Centr	2020	607000	146200	501080	403,086.98
CS	Information Technology	IGC - SAP Support Centr	2020	607000	146200	501090	724.30
CS	Information Technology	IGC - SAP Support Centr	2020	607000	146200	501100	413,622.00
CS	Information Technology	IGC - SAP Support Centr	2020	607000	146200	501105	144,136.64
CS	Information Technology	IGC - SAP Support Centr	2020	607000	146200	501115	392.04
CS	Information Technology	IGC - SAP Support Centr	2020	607000	146200	501118	27.00
CS	Information Technology	IGC - SAP Support Centr	2020	607000	146200	501130	3,948.47
CS	Information Technology	IGC - SAP Support Centr	2020	607000	146200	501140	2,341.74
CS	Information Technology	IGC - SAP Support Centr	2020	607000	146200	511080	100.55
CS	Information Technology	IGC - SAP Support Centr	2020	607000	146200	511360	44.98
CS	Information Technology	IGC - SAP Support Centr	2020	607000	146200	530060	72.60
CS	Information Technology	IGC - SAP Support Centr	2020	607000	146200	530380	1,947,468.83
CS	Information Technology	IGC - SAP Support Centr	2020	607000	146200	540040	7,825.00
CS	Information Technology	IGC - SAP Support Centr	2020	607000	146200	540050	21,945.60
CS	Information Technology	IGC - SAP Support Centr	2020	607000	146200	540170	35,983.80
CS	Information Technology	IGC - SAP Support Centr	2020	607000	146200	540180	230.40
CS	Information Technology	IGC - SAP Support Centr	2020	607000	146200	540190	13,340.00

CSP Cat.	Department	Cost Center Description	Fiscal		Cost		Actuals
			Year	Fund	Center	Acct	
CS	Information Technology	IGC - SAP Support Centr	2020	607000	146200	540200	455,447.84
CS	Information Technology	IGC - SAP Support Centr	2020	607000	146200	540201	1,280,854.09
CS	Information Technology	IGC - SAP Support Centr	2020	607000	146200	540242	2,229.66
CS	Information Technology	IGC - SAP Support Centr	2020	607000	146200	540271	55,850.22
CS	Information Technology	IGC - SAP Support Centr	2020	607000	146200	540640	276.66
CS	Information Technology	IGC - SAP Support Centr	2020	607000	146200	570210	13,130.48
CS	Information Technology	IGC - SAP Support Centr	2020	607000	146200	572200	988.71
CS	Information Technology	IGC - SAP Support Centr	2020	607000	146200	572210	6,789.69
CS	Information Technology	IGC - SAP Support Centr	2020	607000	146200	572220	1,061.42
CS	Information Technology	IGC - SAP Support Centr	2020	607000	146200	580080	986,055.36
CS	Information Technology	IGC - SAP Support Centr	2020	607000	146200	590210	957.36
CS	Information Technology	Projects & Procurement	2020	607000	147300	501010	537,000.96
CS	Information Technology	Projects & Procurement	2020	607000	147300	501020	1,261.06
CS	Information Technology	Projects & Procurement	2020	607000	147300	501035	60,132.76
CS	Information Technology	Projects & Procurement	2020	607000	147300	501080	125,022.51
CS	Information Technology	Projects & Procurement	2020	607000	147300	501090	269.71
CS	Information Technology	Projects & Procurement	2020	607000	147300	501100	131,327.87
CS	Information Technology	Projects & Procurement	2020	607000	147300	501105	44,451.65
CS	Information Technology	Projects & Procurement	2020	607000	147300	501115	146.60
CS	Information Technology	Projects & Procurement	2020	607000	147300	501130	1,143.47
CS	Information Technology	Projects & Procurement	2020	607000	147300	501140	759.86
CS	Information Technology	Projects & Procurement	2020	607000	147300	540040	1,478.00
CS	Information Technology	Projects & Procurement	2020	607000	147300	540050	1,495.00
CS	Information Technology	Projects & Procurement	2020	607000	147300	540242	1,537.03
CS	Information Technology	Desktop Services	2020	607000	148100	501010	819,376.26
CS	Information Technology	Desktop Services	2020	607000	148100	501020	2,981.20
CS	Information Technology	Desktop Services	2020	607000	148100	501035	81,759.58
CS	Information Technology	Desktop Services	2020	607000	148100	501080	185,889.04
CS	Information Technology	Desktop Services	2020	607000	148100	501090	417.77
CS	Information Technology	Desktop Services	2020	607000	148100	501100	238,146.00
CS	Information Technology	Desktop Services	2020	607000	148100	501105	64,418.68
CS	Information Technology	Desktop Services	2020	607000	148100	501115	227.70
CS	Information Technology	Desktop Services	2020	607000	148100	501130	1,710.39
CS	Information Technology	Desktop Services	2020	607000	148100	501140	1,098.42
CS	Information Technology	Desktop Services	2020	607000	148100	511000	104.99
CS	Information Technology	Desktop Services	2020	607000	148100	511030	1,139.10
CS	Information Technology	Desktop Services	2020	607000	148100	511330	117.64
CS	Information Technology	Desktop Services	2020	607000	148100	511360	141.20
CS	Information Technology	Desktop Services	2020	607000	148100	530380	255,852.62
CS	Information Technology	Desktop Services	2020	607000	148100	540040	216.00
CS	Information Technology	Desktop Services	2020	607000	148100	540170	22,471.14
CS	Information Technology	Desktop Services	2020	607000	148100	540180	81.80
CS	Information Technology	Desktop Services	2020	607000	148100	540190	282.32
CS	Information Technology	Desktop Services	2020	607000	148100	540200	1,914.81
CS	Information Technology	Desktop Services	2020	607000	148100	540242	2,185.48
CS	Information Technology	Desktop Services	2020	607000	148100	540260	144.88
CS	Information Technology	Desktop Services	2020	607000	148100	540271	86,833.21
CS	Information Technology	Desktop Services	2020	607000	148100	540300	3,996.00
CS	Information Technology	Desktop Services	2020	607000	148100	540610	56.35
CS	Information Technology	Desktop Services	2020	607000	148100	540640	230.00
CS	Information Technology	Desktop Services	2020	607000	148100	572210	8,602.85
CS	Information Technology	Desktop Services	2020	607000	148100	572220	15,400.00
CS	Information Technology	Network Services	2020	607000	148200	501010	1,270,654.68
CS	Information Technology	Network Services	2020	607000	148200	501020	67,148.98
CS	Information Technology	Network Services	2020	607000	148200	501035	130,513.26
CS	Information Technology	Network Services	2020	607000	148200	501080	308,067.38
CS	Information Technology	Network Services	2020	607000	148200	501090	602.08
CS	Information Technology	Network Services	2020	607000	148200	501100	303,993.50
CS	Information Technology	Network Services	2020	607000	148200	501105	108,225.76
CS	Information Technology	Network Services	2020	607000	148200	501115	324.72
CS	Information Technology	Network Services	2020	607000	148200	501130	2,834.07
CS	Information Technology	Network Services	2020	607000	148200	501140	1,768.32

CSP Cat.	Department	Cost Center Description	Fiscal		Cost		Actuals
			Year	Fund	Center	Acct	
CS	Information Technology	Network Services	2020	607000	148200	511330	1,045.90
CS	Information Technology	Network Services	2020	607000	148200	511360	11,452.12
CS	Information Technology	Network Services	2020	607000	148200	530380	196,609.56
CS	Information Technology	Network Services	2020	607000	148200	540040	600.00
CS	Information Technology	Network Services	2020	607000	148200	540050	995.00
CS	Information Technology	Network Services	2020	607000	148200	540170	353,783.35
CS	Information Technology	Network Services	2020	607000	148200	540190	350,330.57
CS	Information Technology	Network Services	2020	607000	148200	540200	403,077.62
CS	Information Technology	Network Services	2020	607000	148200	540201	89,526.00
CS	Information Technology	Network Services	2020	607000	148200	540242	2,620.78
CS	Information Technology	Network Services	2020	607000	148200	540260	97,893.88
CS	Information Technology	Network Services	2020	607000	148200	540271	95,907.10
CS	Information Technology	Network Services	2020	607000	148200	540300	11,868.00
CS	Information Technology	Network Services	2020	607000	148200	540640	9,809.60
CS	Information Technology	Network Services	2020	607000	148200	572200	263.89
CS	Information Technology	Network Services	2020	607000	148200	572210	900,359.15
CS	Information Technology	Network Services	2020	607000	148200	572220	309,802.46
CS	Information Technology	Network Services	2020	607000	148200	590210	964.76
CS	Information Technology	Technology Services	2020	607000	148300	530380	210,721.00
CS	Information Technology	Technology Services	2020	607000	148300	540170	25,437.02
CS	Information Technology	Technology Services	2020	607000	148300	540190	38,191.88
CS	Information Technology	Technology Services	2020	607000	148300	540200	270,575.46
CS	Information Technology	Technology Services	2020	607000	148300	540260	126,808.92
CS	Information Technology	Technology Services	2020	607000	148300	540271	2,713.83
CS	Information Technology	Technology Services	2020	607000	148300	572210	87,899.34
							69,639,984.22



CSP Cat.	Department	Cost Center Description	Fiscal		Cost		Actuals
			Year	Fund	Center	Acct	
CS	Assembly	Clerk-Agenda Control	2020	101000	102003	605530	13.49
CS	Assembly	Clerk-Agenda Control	2020	101000	102003	605540	1,213.86
CS	Assembly	Clerk-Liquor License	2020	101000	102007	605530	4.08
CS	Assembly	Clerk-Liquor License	2020	101000	102007	605540	362.21
CS	Assembly	Ombudsman	2020	101000	103000	600900	29,935.54
CS	Assembly	Ombudsman	2020	101000	103000	601150	1,946.94
CS	Assembly	Ombudsman	2020	101000	103000	605530	16.53
CS	Assembly	Ombudsman	2020	101000	103000	605540	1,495.63
CS	Internal Audit	Internal Audit	2020	101000	106000	600900	69,522.07
CS	Internal Audit	Internal Audit	2020	101000	106000	601150	4,521.56
CS	Internal Audit	Internal Audit	2020	101000	106000	605530	17,580.73
CS	Internal Audit	Internal Audit	2020	101000	106000	605540	1,280.72
CS	Mayor	Mayor	2020	101000	111100	600900	152,695.86
CS	Mayor	Mayor	2020	101000	111100	601150	9,931.04
CS	Mayor	Mayor	2020	101000	111100	605530	79.15
CS	Mayor	Mayor	2020	101000	111100	605540	2,049.39
CS	Municipal Manager	Office of Equal Opportunity	2020	101000	113200	600900	26,004.98
CS	Municipal Manager	Office of Equal Opportunity	2020	101000	113200	601150	1,691.34
CS	Municipal Manager	Office of Equal Opportunity	2020	101000	113200	605530	15.04
CS	Municipal Manager	Office of Equal Opportunity	2020	101000	113200	605540	2,691.26
CS	Municipal Manager	IGC-OEO-Equal Employment O	2020	101000	113271	600130	65,095.96
CS	Municipal Manager	IGC-OEO-Contract Compliance	2020	101000	113272	600130	65,096.00
CS	Municipal Manager	IGC-OEO-Contract DBE	2020	101000	113273	600130	130,192.02
CS	Municipal Attorney	Civil Law	2020	101000	115100	600190	67,577.84
CS	Municipal Attorney	Civil Law	2020	101000	115100	600900	243,274.56
CS	Municipal Attorney	Civil Law	2020	101000	115100	601150	15,822.09
CS	Municipal Attorney	Civil Law	2020	101000	115100	605530	148.13
CS	Municipal Attorney	Civil Law	2020	101000	115100	605540	7,929.85
CS	Municipal Attorney	Criminal	2020	101000	115200	600190	18,020.75
CS	Municipal Attorney	Criminal	2020	101000	115200	600430	3,850.61
CS	Municipal Attorney	Criminal	2020	101000	115200	600480	20,052.29
CS	Municipal Attorney	Criminal	2020	101000	115200	600900	356,524.27
CS	Municipal Attorney	Criminal	2020	101000	115200	601150	23,187.64
CS	Municipal Attorney	Criminal	2020	101000	115200	605530	202.00
CS	Municipal Attorney	Criminal	2020	101000	115200	605540	10,781.02
CS	Municipal Attorney	Administrative Hearing	2020	101000	115300	600190	4,505.18
CS	Municipal Attorney	Administrative Hearing	2020	101000	115300	600900	18,740.41
CS	Municipal Attorney	Administrative Hearing	2020	101000	115300	601150	1,218.86
CS	Municipal Attorney	Administrative Hearing	2020	101000	115300	605530	17.60
CS	Municipal Attorney	Administrative Hearing	2020	101000	115300	605540	944.91
CS	Municipal Attorney	Muni Attorney Administration	2020	101000	115400	600440	2,390.75
CS	Municipal Attorney	Muni Attorney Administration	2020	101000	115400	600450	21,845.12
CS	Municipal Attorney	Muni Attorney Administration	2020	101000	115400	600900	15,617.03
CS	Municipal Attorney	Muni Attorney Administration	2020	101000	115400	601150	1,015.71
CS	Municipal Attorney	Muni Attorney Administration	2020	101000	115400	605530	21.91
CS	Municipal Attorney	Muni Attorney Administration	2020	101000	115400	605540	1,173.28
CS	Municipal Manager	Muni Manager Admin	2020	101000	121000	600900	55,378.98
CS	Municipal Manager	Muni Manager Admin	2020	101000	121000	601150	3,601.75
CS	Municipal Manager	Muni Manager Admin	2020	101000	121000	605530	29.14
CS	Municipal Manager	Muni Manager Admin	2020	101000	121000	605540	5,251.10
CS	Municipal Manager	Office of Emergency Managem	2020	101000	124200	601050	112,329.60
CS	Municipal Manager	Office of Emergency Managem	2020	101000	124200	605023	3,218.00
CS	Municipal Manager	Office of Emergency Managem	2020	101000	124200	605530	36.48
CS	Municipal Manager	Office of Emergency Managem	2020	101000	124200	605540	6,519.28
CS	Municipal Manager	Risk Management	2020	101000	124700	600030	440.04
CS	Municipal Manager	Risk Management	2020	101000	124700	600050	2,665.06
CS	Municipal Manager	Risk Management	2020	101000	124700	600060	577.40
CS	Municipal Manager	Risk Management	2020	101000	124700	600080	1,080.61
CS	Municipal Manager	Risk Management	2020	101000	124700	600090	986.99
CS	Municipal Manager	Risk Management	2020	101000	124700	600120	22.80
CS	Municipal Manager	Risk Management	2020	101000	124700	600140	50.92
CS	Municipal Manager	Risk Management	2020	101000	124700	600150	825.33

CSP Cat.	Department	Cost Center Description	Fiscal		Cost		Actuals
			Year	Fund	Center	Acct	
CS	Municipal Manager	Risk Management	2020	101000	124700	600160	492,111.09
CS	Municipal Manager	Risk Management	2020	101000	124700	600220	380.69
CS	Municipal Manager	Risk Management	2020	101000	124700	600240	1,015.79
CS	Municipal Manager	Risk Management	2020	101000	124700	600250	29.69
CS	Municipal Manager	Risk Management	2020	101000	124700	600280	1,193.10
CS	Municipal Manager	Risk Management	2020	101000	124700	600290	2,058.57
CS	Municipal Manager	Risk Management	2020	101000	124700	600320	570.13
CS	Municipal Manager	Risk Management	2020	101000	124700	600330	316.73
CS	Municipal Manager	Risk Management	2020	101000	124700	600360	1,847.21
CS	Municipal Manager	Risk Management	2020	101000	124700	600370	31.75
CS	Municipal Manager	Risk Management	2020	101000	124700	600540	2,243.24
CS	Municipal Manager	Risk Management	2020	101000	124700	600570	346.87
CS	Municipal Manager	Risk Management	2020	101000	124700	600580	1,362.86
CS	Municipal Manager	Risk Management	2020	101000	124700	600610	1,210.00
CS	Municipal Manager	Risk Management	2020	101000	124700	600900	86,051.52
CS	Municipal Manager	Risk Management	2020	101000	124700	601150	5,596.62
CS	Municipal Manager	Risk Management	2020	101000	124700	601840	253.39
CS	Municipal Manager	Risk Management	2020	101000	124700	601850	389.01
CS	Municipal Manager	Risk Management	2020	101000	124700	601880	5,415.96
CS	Municipal Manager	Risk Management	2020	101000	124700	601890	10,062.00
CS	Municipal Manager	Risk Management	2020	101000	124700	605530	16.37
CS	Municipal Manager	Risk Management	2020	101000	124700	605540	2,907.37
CS	Municipal Manager	Safety	2020	101000	124900	600030	175.95
CS	Municipal Manager	Safety	2020	101000	124900	600060	230.88
CS	Municipal Manager	Safety	2020	101000	124900	600080	432.11
CS	Municipal Manager	Safety	2020	101000	124900	600090	394.66
CS	Municipal Manager	Safety	2020	101000	124900	600120	12.54
CS	Municipal Manager	Safety	2020	101000	124900	600140	20.37
CS	Municipal Manager	Safety	2020	101000	124900	600150	412.66
CS	Municipal Manager	Safety	2020	101000	124900	600220	152.20
CS	Municipal Manager	Safety	2020	101000	124900	600240	529.67
CS	Municipal Manager	Safety	2020	101000	124900	600280	596.55
CS	Municipal Manager	Safety	2020	101000	124900	600290	1,029.29
CS	Municipal Manager	Safety	2020	101000	124900	600320	313.69
CS	Municipal Manager	Safety	2020	101000	124900	600330	126.65
CS	Municipal Manager	Safety	2020	101000	124900	600360	694.33
CS	Municipal Manager	Safety	2020	101000	124900	600370	31.75
CS	Municipal Manager	Safety	2020	101000	124900	600540	1,121.64
CS	Municipal Manager	Safety	2020	101000	124900	600570	173.45
CS	Municipal Manager	Safety	2020	101000	124900	600580	681.43
CS	Municipal Manager	Safety	2020	101000	124900	600610	483.84
CS	Municipal Manager	Safety	2020	101000	124900	601840	101.31
CS	Municipal Manager	Safety	2020	101000	124900	601850	155.55
CS	Municipal Manager	Safety	2020	101000	124900	601880	2,903.16
CS	Municipal Manager	Safety	2020	101000	124900	601890	5,393.65
CS	Municipal Manager	Safety	2020	101000	124900	605530	8.58
CS	Municipal Manager	Safety	2020	101000	124900	605540	1,552.23
CS	Finance	Controller Administration	2020	101000	132100	600900	17,827.97
CS	Finance	Controller Administration	2020	101000	132100	601150	1,159.49
CS	Finance	Controller Administration	2020	101000	132100	605530	12.00
CS	Finance	Controller Administration	2020	101000	132100	605540	727.25
CS	Finance	Central Accounting	2020	101000	132200	600340	117,825.25
CS	Finance	Central Accounting	2020	101000	132200	600900	177,612.89
CS	Finance	Central Accounting	2020	101000	132200	601150	11,551.59
CS	Finance	Central Accounting	2020	101000	132200	605530	158.44
CS	Finance	Central Accounting	2020	101000	132200	605540	8,768.38
CS	Human Resources	Payroll	2020	101000	132300	600480	15,621.27
CS	Human Resources	Payroll	2020	101000	132300	600900	60,362.42
CS	Human Resources	Payroll	2020	101000	132300	601150	3,925.86
CS	Human Resources	Payroll	2020	101000	132300	605530	212,626.09
CS	Human Resources	Payroll	2020	101000	132300	605540	3,781.85
CS	Finance	Accounts Payable	2020	101000	132400	600340	39,275.06

CSP Cat.	Department	Cost Center Description	Fiscal		Cost		Actuals
			Year	Fund	Center	Acct	
CS	Finance	Accounts Payable	2020	101000	132400	600480	48,290.72
CS	Finance	Accounts Payable	2020	101000	132400	600900	26,180.43
CS	Finance	Accounts Payable	2020	101000	132400	601150	1,702.73
CS	Finance	Accounts Payable	2020	101000	132400	605530	16.69
CS	Finance	Accounts Payable	2020	101000	132400	605540	1,007.14
CS	Finance	Treasury Administration	2020	101000	134100	600900	39,270.66
CS	Finance	Treasury Administration	2020	101000	134100	601150	2,554.09
CS	Finance	Treasury Administration	2020	101000	134100	605530	20.01
CS	Finance	Treasury Administration	2020	101000	134100	605540	1,212.12
CS	Finance	Revenue Management	2020	101000	134200	600390	161,425.92
CS	Finance	Revenue Management	2020	101000	134200	600900	145,466.41
CS	Finance	Revenue Management	2020	101000	134200	601150	9,460.86
CS	Finance	Revenue Management	2020	101000	134200	605530	126.18
CS	Finance	Revenue Management	2020	101000	134200	605540	7,623.59
CS	Finance	IGC-Rev Mgmt-E911	2020	101000	134271	600400	12,492.70
CS	Finance	IGC-Rev Mgmt-PSAR Billing	2020	101000	134272	600400	148,127.80
CS	Finance	IGC-Rev Mgmt-Cash Receipts	2020	101000	134273	600400	207,021.99
CS	Finance	IGC-Rev Mgmt-In-House Collec	2020	101000	134274	600400	30,339.43
CS	Finance	IGC-Rev Mgmt-DCF	2020	101000	134275	600400	506,846.93
CS	Finance	IGC-Exter Collect Agncy Recov	2020	101000	134276	600400	28,554.77
CS	Finance	Tax Billing	2020	101000	134600	600390	54,432.65
CS	Finance	Tax Billing	2020	101000	134600	600900	45,973.71
CS	Finance	Tax Billing	2020	101000	134600	601150	2,990.03
CS	Finance	Tax Billing	2020	101000	134600	605530	34.10
CS	Finance	Tax Billing	2020	101000	134600	605540	2,059.76
CS	Finance	IGC-Tax Billing Utilities	2020	101000	134671	600470	100,261.45
CS	Finance	Remittance Processing	2020	101000	134700	600390	18,144.21
CS	Finance	Remittance Processing	2020	101000	134700	600900	45,938.60
CS	Finance	Remittance Processing	2020	101000	134700	601150	2,987.76
CS	Finance	Remittance Processing	2020	101000	134700	605530	11.26
CS	Finance	Remittance Processing	2020	101000	134700	605540	678.26
CS	Finance	IGC-Remittance Processing	2020	101000	134771	600510	237,750.64
CS	Chief Fiscal Officer	Chief Fiscal Officer	2020	101000	137000	605530	21.79
CS	Chief Fiscal Officer	Chief Fiscal Officer	2020	101000	137000	605540	535.82
CS	Purchasing	Purchasing Services	2020	101000	138100	600900	160,907.95
CS	Purchasing	Purchasing Services	2020	101000	138100	601150	10,465.14
CS	Purchasing	Purchasing Services	2020	101000	138100	605530	175.78
CS	Purchasing	Purchasing Services	2020	101000	138100	605540	3,013.38
CS	Management & Budget	Management & Budget	2020	101000	139100	600900	92,824.75
CS	Management & Budget	Management & Budget	2020	101000	139100	601150	6,037.14
CS	Management & Budget	Management & Budget	2020	101000	139100	605530	56.96
CS	Management & Budget	Management & Budget	2020	101000	139100	605540	1,476.88
CS	Information Technology	Reprographics	2020	101000	142300	600260	119,655.82
CS	Information Technology	Reprographics	2020	101000	142300	600900	118,899.91
CS	Information Technology	Reprographics	2020	101000	142300	601150	7,733.02
CS	Information Technology	Reprographics	2020	101000	142300	605530	34.11
CS	Information Technology	Reprographics	2020	101000	142300	605540	876.95
CS	Information Technology	IGC-Repro	2020	101000	142371	600230	898,897.25
CS	Information Technology	Records Management	2020	101000	142400	600260	23,931.16
CS	Information Technology	Records Management	2020	101000	142400	605530	7.20
CS	Information Technology	Records Management	2020	101000	142400	605540	186.01
CS	Human Resources	Employee Relations Admin	2020	101000	181000	600900	50,676.35
CS	Human Resources	Employee Relations Admin	2020	101000	181000	601150	3,295.89
CS	Human Resources	Employee Relations Admin	2020	101000	181000	605530	39,964.61
CS	Human Resources	Employee Relations Admin	2020	101000	181000	605540	711.77
CS	Human Resources	Labor Relations	2020	101000	184100	600620	173,422.18
CS	Human Resources	Labor Relations	2020	101000	184100	605530	165,111.31
CS	Human Resources	Labor Relations	2020	101000	184100	605540	2,941.10
CS	Human Resources	Employment	2020	101000	184500	600620	229,533.56
CS	Human Resources	Employment	2020	101000	184500	600900	105,739.51
CS	Human Resources	Employment	2020	101000	184500	601150	6,877.09
CS	Human Resources	Employment	2020	101000	184500	605530	179,589.46

CSP Cat.	Department	Cost Center Description	Fiscal		Cost		Actuals
			Year	Fund	Center	Acct	
CS	Human Resources	Employment	2020	101000	184500	605540	3,198.46
CS	Human Resources	Benefits	2020	101000	187100	600620	54,386.12
CS	Human Resources	Benefits	2020	101000	187100	600900	93,245.90
CS	Human Resources	Benefits	2020	101000	187100	601150	6,064.53
CS	Human Resources	Benefits	2020	101000	187100	605530	49,028.32
CS	Human Resources	Benefits	2020	101000	187100	605540	873.21
CS	Economic & Community [ OECD Admin		2020	101000	510500	600020	10,467.09
CS	Economic & Community [ OECD Admin		2020	101000	510500	600050	1,522.88
CS	Economic & Community [ OECD Admin		2020	101000	510500	600120	38.49
CS	Economic & Community [ OECD Admin		2020	101000	510500	600160	62,167.14
CS	Economic & Community [ OECD Admin		2020	101000	510500	600200	10,979.41
CS	Economic & Community [ OECD Admin		2020	101000	510500	600240	5,482.53
CS	Economic & Community [ OECD Admin		2020	101000	510500	600320	962.22
CS	Economic & Community [ OECD Admin		2020	101000	510500	600360	5,436.80
CS	Economic & Community [ OECD Admin		2020	101000	510500	600370	82.57
CS	Economic & Community [ OECD Admin		2020	101000	510500	600900	40,428.78
CS	Economic & Community [ OECD Admin		2020	101000	510500	601150	2,629.39
CS	Economic & Community [ OECD Admin		2020	101000	510500	601580	9,061.98
CS	Economic & Community [ OECD Admin		2020	101000	510500	601590	8,582.14
CS	Economic & Community [ OECD Admin		2020	101000	510500	601880	1,489.20
CS	Economic & Community [ OECD Admin		2020	101000	510500	601890	2,766.67
CS	Economic & Community [ OECD Admin		2020	101000	510500	605530	25,451.74
CS	Economic & Community [ OECD Admin		2020	101000	510500	605540	4,351.96
CS	Economic & Community [ OECD Data & Analytics		2020	101000	510600	605530	26,349.94
CS	Economic & Community [ OECD Data & Analytics		2020	101000	510600	605540	4,503.90
CS	Economic & Community [ IGC-OECD GIS Licensing		2020	101000	510671	600110	277,945.43
CS	Economic & Community [ IGC-OECD GIS Enterprise Prog		2020	101000	510672	600110	539,272.31
CS	Economic & Community [ IGC-OECD GIS Dept Support		2020	101000	510673	600110	100,843.01
CS	Maintenance & Operation Facility Maintenance		2020	101000	710500	601330	937,204.53
CS	Maintenance & Operation Facility Maintenance		2020	101000	710500	605023	10,896.00
CS	Maintenance & Operation Facility Maintenance		2020	101000	710500	605530	39,604.97
CS	Maintenance & Operation Facility Maintenance		2020	101000	710500	605540	65,823.69
CS	Maintenance & Operation Facilities-Girdwood		2020	101000	710503	601000	24,900.50
CS	Maintenance & Operation Facilities-Eagle River Town Cen		2020	101000	710506	601000	90,937.37
CS	Maintenance & Operation Facilities-Fire Stations		2020	101000	710509	601000	1,023,868.72
CS	Maintenance & Operation Facilities-Libraries		2020	101000	710512	601000	1,314,236.46
CS	Maintenance & Operation Facilities-Fac Maint Whse		2020	101000	710515	601000	164,874.82
CS	Maintenance & Operation Facilities-Traffic		2020	101000	710518	601000	41,989.34
CS	Maintenance & Operation Facilities-RES/Historical Properl		2020	101000	710521	601000	30,919.78
CS	Maintenance & Operation Facilities-Areawide Parks & Rec		2020	101000	710524	601000	380,965.09
CS	Maintenance & Operation Facilities-Health and Human Se		2020	101000	710527	601000	477,025.98
CS	Maintenance & Operation Facilities-ARDSA		2020	101000	710530	601000	4,509.35
CS	Maintenance & Operation Facilities-Transit/Centers/Park &		2020	101000	710533	601000	805,897.15
CS	Maintenance & Operation Facilities-Fleet Maint		2020	101000	710536	601000	168,070.97
CS	Maintenance & Operation Facilities-Police / Substations		2020	101000	710539	601000	738,795.71
CS	Maintenance & Operation Facilities-Eagle River Parks & R		2020	101000	710542	601000	1,081.01
CS	Maintenance & Operation Facilities-City Hall		2020	101000	710545	601000	82,384.74
CS	Maintenance & Operation Facilities-Eagle River Parks & R		2020	101000	710548	601000	752.51
CS	Maintenance & Operation Facilities-Eagle River Parks & R		2020	101000	710551	601000	15,794.57
CS	Maintenance & Operation Facilities-Areawide Parks & Rec		2020	101000	710554	601000	63,959.64
CS	Maintenance & Operation Facilities-Heritage Land Bank		2020	101000	710557	601000	12,087.99
CS	Maintenance & Operation Facilities-Chugiak Fire Service /		2020	101000	710560	601000	21,142.03
CS	Maintenance & Operation Facilities-Permit Center		2020	101000	710583	601000	0.80
CS	Maintenance & Operation Facility Capital Improvements		2020	101000	710800	605530	4,333.09
CS	Maintenance & Operation Facility Capital Improvements		2020	101000	710800	605540	7,201.90
CS	Information Technology Admin Support		2020	607000	141100	600900	331,607.24
CS	Information Technology Admin Support		2020	607000	141100	600970	79,789.62
CS	Information Technology Admin Support		2020	607000	141100	601130	108,688.97
CS	Information Technology Admin Support		2020	607000	141100	601150	21,567.10
CS	Information Technology Admin Support		2020	607000	141100	605530	68.87
CS	Information Technology Admin Support		2020	607000	141100	605540	1,782.24
CS	Information Technology IGC - IT Security		2020	607000	143500	600260	71,793.48

CSP Cat.	Department	Cost Center Description	Fiscal		Cost		Actuals
			Year	Fund	Center	Acct	
CS	Information Technology	IGC - IT Security	2020	607000	143500	605530	32.16
CS	Information Technology	IGC - IT Security	2020	607000	143500	605540	837.24
CS	Information Technology	IGC - IT Security - All	2020	607000	143571	601870	323,219.26
CS	Information Technology	IGC - IT Security - No AWWU	2020	607000	143572	601870	446,350.41
CS	Information Technology	Application Services	2020	607000	145100	600260	335,036.28
CS	Information Technology	Application Services	2020	607000	145100	605530	129.54
CS	Information Technology	Application Services	2020	607000	145100	605540	3,349.87
CS	Information Technology	IGC - SAP Support Centr	2020	607000	146200	600260	454,692.09
CS	Information Technology	IGC - SAP Support Centr	2020	607000	146200	600900	178,595.54
CS	Information Technology	IGC - SAP Support Centr	2020	607000	146200	601150	11,615.49
CS	Information Technology	IGC - SAP Support Centr	2020	607000	146200	605530	197.37
CS	Information Technology	IGC - SAP Support Centr	2020	607000	146200	605540	5,115.53
CS	Information Technology	Projects & Procurement	2020	607000	147300	600260	167,518.13
CS	Information Technology	Projects & Procurement	2020	607000	147300	605530	64.69
CS	Information Technology	Projects & Procurement	2020	607000	147300	605540	1,681.19
CS	Information Technology	Desktop Services	2020	607000	148100	600260	239,311.63
CS	Information Technology	Desktop Services	2020	607000	148100	605530	85.65
CS	Information Technology	Desktop Services	2020	607000	148100	605540	2,216.29
CS	Information Technology	Network Services	2020	607000	148200	600260	335,036.28
CS	Information Technology	Network Services	2020	607000	148200	605530	141.65
CS	Information Technology	Network Services	2020	607000	148200	605540	3,669.18
CS	Information Technology	IGC - Netwk Svcs - Servers	2020	607000	148271	600100	2,803,786.66
CS	Information Technology	IGC - Netwk Svcs - Network	2020	607000	148272	600100	1,678,731.05
CS	Information Technology	IGC - Netwk Svcs - Phones	2020	607000	148273	600100	882,554.36
							23,574,423.94

CSP Cat.	Department	Cost Center Description	Fiscal		Cost		Actuals
			Year	Fund	Center	Acct	
CS	Municipal Manager	Office of Equal Opportunity	2020	101000	113200	540130	500.00
CS	Municipal Attorney	Civil Law	2020	101000	115100	530090	1,569.00
CS	Municipal Attorney	Civil Law	2020	101000	115100	600190	67,577.84
CS	Municipal Attorney	Criminal	2020	101000	115200	530090	112.00
CS	Municipal Attorney	Criminal	2020	101000	115200	540030	105,736.48
CS	Municipal Attorney	Criminal	2020	101000	115200	600190	18,020.75
CS	Municipal Attorney	Administrative Hearing	2020	101000	115300	600190	4,505.18
CS	Real Estate	Leases-City Hall	2020	101000	122302	580530	198,955.00
CS	Real Estate	Leases-ERTC	2020	101000	122303	580530	120,000.00
CS	Municipal Manager	Office of Emergency Management	2020	101000	124200	570200	1,243.24
CS	Municipal Manager	Office of Emergency Management	2020	101000	124200	580010	329,329.21
CS	Municipal Manager	Office of Emergency Management	2020	101000	124200	580020	119,034.04
CS	Municipal Manager	Office of Emergency Management	2020	101000	124200	580030	3.43
CS	Municipal Manager	Office of Emergency Management	2020	101000	124200	580530	5,500.00
CS	Municipal Manager	Risk Management	2020	101000	124700	600080	1,080.61
CS	Municipal Manager	Risk Management	2020	101000	124700	600160	492,111.09
CS	Municipal Manager	Safety	2020	101000	124900	600080	432.11
CS	Finance	Revenue Management	2020	101000	134200	540030	1,050.00
CS	Finance	Revenue Management	2020	101000	134200	570210	1,624.95
CS	Finance	Tax Billing	2020	101000	134600	540030	22.00
CS	Management & Budget	Management & Budget	2020	101000	139100	570210	11,061.97
CS	Information Technology	Records Management	2020	101000	142400	570210	1,518.51
CS	Human Resources	Employee Relations Admin	2020	101000	181000	530130	20,000.00
CS	Human Resources	Employee Relations Admin	2020	101000	181000	570210	6,081.01
CS	Human Resources	Labor Relations	2020	101000	184100	570210	3,000.32
CS	Economic & Community Development	OECD Admin	2020	101000	510500	600160	62,167.14
CS	Maintenance & Operation	Facility Maintenance	2020	101000	710500	580530	675,963.00
CS	Maintenance & Operation	Facility Capital Improvements	2020	101000	710800	580010	546,419.65
CS	Maintenance & Operation	Facility Capital Improvements	2020	101000	710800	580020	251,284.36
CS	Maintenance & Operation	Facility Capital Improvements	2020	101000	710800	580030	2.13
CS	Information Technology	Admin Support	2020	607000	141100	540150	955.61
CS	Information Technology	Fixed Assets	2020	607000	144000	580080	183,308.84
CS	Information Technology	Fixed Assets	2020	607000	144000	580150	5,750.00
CS	Information Technology	IGC - SAP Support Center	2020	607000	146200	570210	13,130.48
CS	Information Technology	IGC - SAP Support Center	2020	607000	146200	580080	986,055.36
							<u>4,235,105.31</u>

CSP Cat.	Department	Cost Center Description	Fiscal		Cost		Actuals
			Year	Fund	Center	Acct	
CS	Assembly	Clerk-Agenda Control	2020	101000	102003	600020	(233,419.92)
CS	Assembly	Clerk-Municipal Audit	2020	101000	102006	600030	(442,694.00)
CS	Assembly	Clerk-Liquor License	2020	101000	102007	600040	(71,568.70)
CS	Assembly	Ombudsman	2020	101000	103000	408380	(16.05)
CS	Assembly	Ombudsman	2020	101000	103000	600050	(290,682.59)
CS	Internal Audit	Internal Audit	2020	101000	106000	408380	(23.62)
CS	Internal Audit	Internal Audit	2020	101000	106000	430030	(137,941.38)
CS	Internal Audit	Internal Audit	2020	101000	106000	600060	(738,308.61)
CS	Mayor	Mayor	2020	101000	111100	408380	(52.60)
CS	Mayor	Mayor	2020	101000	111100	600080	(1,381,781.20)
CS	Municipal Manager	Office of Equal Opportunity	2020	101000	113200	408380	(16.25)
CS	Municipal Manager	Office of Equal Opportunity	2020	101000	113200	600130	(260,383.98)
CS	Municipal Manager	IGC-OEO-Equal Employment O	2020	101000	113271	600140	(65,095.96)
CS	Municipal Manager	IGC-OEO-Contract Compliance	2020	101000	113272	600120	(65,096.00)
CS	Municipal Manager	IGC-OEO-Contract DBE	2020	101000	113273	601820	(130,192.02)
CS	Municipal Attorney	Civil Law	2020	101000	115100	408380	(72.51)
CS	Municipal Attorney	Civil Law	2020	101000	115100	408580	(13,391.30)
CS	Municipal Attorney	Civil Law	2020	101000	115100	600160	(2,481,770.21)
CS	Municipal Attorney	Criminal	2020	101000	115200	406490	(321,704.33)
CS	Municipal Attorney	Criminal	2020	101000	115200	406625	(2,347.85)
CS	Municipal Attorney	Criminal	2020	101000	115200	407060	(48,375.00)
CS	Municipal Attorney	Criminal	2020	101000	115200	408380	(115.71)
CS	Municipal Attorney	Criminal	2020	101000	115200	600170	(3,428,728.46)
CS	Municipal Attorney	Administrative Hearing	2020	101000	115300	407050	(1,515.67)
CS	Municipal Attorney	Administrative Hearing	2020	101000	115300	408380	(10.46)
CS	Municipal Attorney	Administrative Hearing	2020	101000	115300	600180	(306,838.19)
CS	Municipal Attorney	Muni Attorney Administration	2020	101000	115400	408380	(21.34)
CS	Municipal Attorney	Muni Attorney Administration	2020	101000	115400	600190	(373,930.73)
CS	Municipal Manager	Muni Manager Admin	2020	101000	121000	408380	(23.25)
CS	Municipal Manager	Muni Manager Admin	2020	101000	121000	600220	(486,765.04)
CS	Real Estate	Leases-Parking Garage	2020	101000	122301	600890	(91,980.00)
CS	Real Estate	Leases-City Hall	2020	101000	122302	600900	(3,747,102.16)
CS	Real Estate	Leases-ERTC	2020	101000	122303	600910	(346,364.50)
CS	Real Estate	Leases-Libraries	2020	101000	122304	600920	(217,591.50)
CS	Real Estate	Leases-Traffic	2020	101000	122306	600940	(48,000.00)
CS	Real Estate	Leases-Recreation	2020	101000	122307	600950	(366,000.00)
CS	Real Estate	Leases-Permit Center	2020	101000	122309	600970	(2,064,073.86)
CS	Real Estate	Leases-Police	2020	101000	122310	600980	(37,296.00)
CS	Municipal Manager	Office of Emergency Management	2020	101000	124200	408380	(24.24)
CS	Municipal Manager	Office of Emergency Management	2020	101000	124200	600090	(1,002,890.14)
CS	Municipal Manager	Risk Management	2020	101000	124700	406625	(9,729.42)
CS	Municipal Manager	Risk Management	2020	101000	124700	408380	(17.54)
CS	Municipal Manager	Risk Management	2020	101000	124700	408550	0.01
CS	Municipal Manager	Risk Management	2020	101000	124700	600600	(869,826.96)
CS	Municipal Manager	Safety	2020	101000	124900	408380	(8.85)
CS	Municipal Manager	Safety	2020	101000	124900	600500	(163,097.65)
CS	Finance	Controller Administration	2020	101000	132100	408380	(9,939.78)
CS	Finance	Controller Administration	2020	101000	132100	600340	(157,100.31)
CS	Finance	Central Accounting	2020	101000	132200	406625	(7,830.29)
CS	Finance	Central Accounting	2020	101000	132200	408380	(68.21)
CS	Finance	Central Accounting	2020	101000	132200	600350	(2,500,703.45)
CS	Human Resources	Payroll	2020	101000	132300	406621	(3,627.50)
CS	Human Resources	Payroll	2020	101000	132300	408380	(109.10)
CS	Human Resources	Payroll	2020	101000	132300	600360	(1,772,310.94)
CS	Finance	Accounts Payable	2020	101000	132400	408380	(7.15)
CS	Finance	Accounts Payable	2020	101000	132400	600370	(368,751.90)
CS	Finance	Treasury Administration	2020	101000	134100	408380	(6.33)
CS	Finance	Treasury Administration	2020	101000	134100	600390	(360,004.28)
CS	Finance	Revenue Management	2020	101000	134200	404220	(62,880.00)
CS	Finance	Revenue Management	2020	101000	134200	406600	(30,200.00)
CS	Finance	Revenue Management	2020	101000	134200	406625	(616,113.64)
CS	Finance	Revenue Management	2020	101000	134200	408060	(11,104.54)

CSP Cat.	Department	Cost Center Description	Fiscal		Cost		Actuals
			Year	Fund	Center	Acct	
CS	Finance	Revenue Management	2020	101000	134200	408380	(106.30)
CS	Finance	Revenue Management	2020	101000	134200	408550	3.02
CS	Finance	Revenue Management	2020	101000	134200	600400	(1,784,672.29)
CS	Finance	IGC-Rev Mgmt-E911	2020	101000	134271	600410	(12,492.70)
CS	Finance	IGC-Rev Mgmt-PSAR Billing	2020	101000	134272	600420	(148,127.80)
CS	Finance	IGC-Rev Mgmt-Cash Receipts	2020	101000	134273	600430	(207,021.99)
CS	Finance	IGC-Rev Mgmt-In-House Collec	2020	101000	134274	600440	(30,339.43)
CS	Finance	IGC-Rev Mgmt-DCF	2020	101000	134275	600450	(506,846.93)
CS	Finance	IGC-Exter Collect Agncy Recov	2020	101000	134276	600490	(28,554.77)
CS	Finance	Tax Billing	2020	101000	134600	401040	(2,421.22)
CS	Finance	Tax Billing	2020	101000	134600	406625	(8,560.00)
CS	Finance	Tax Billing	2020	101000	134600	408380	(16.82)
CS	Finance	Tax Billing	2020	101000	134600	408550	10.00
CS	Finance	Tax Billing	2020	101000	134600	600470	(751,022.03)
CS	Finance	IGC-Tax Billing Utilities	2020	101000	134671	600480	(100,261.45)
CS	Finance	Remittance Processing	2020	101000	134700	408550	(20.00)
CS	Finance	Remittance Processing	2020	101000	134700	600510	(290,293.81)
CS	Finance	IGC-Remittance Processing	2020	101000	134771	600520	(237,750.64)
CS	Chief Fiscal Officer	Chief Fiscal Officer	2020	101000	137000	408380	(20.46)
CS	Chief Fiscal Officer	Chief Fiscal Officer	2020	101000	137000	600330	(405,032.59)
CS	Purchasing	Purchasing Services	2020	101000	138100	406625	(120,643.82)
CS	Purchasing	Purchasing Services	2020	101000	138100	408380	(79.90)
CS	Purchasing	Purchasing Services	2020	101000	138100	408580	(280,380.86)
CS	Purchasing	Purchasing Services	2020	101000	138100	600320	(1,629,261.50)
CS	Management & Budget	Management & Budget	2020	101000	139100	408380	(16.52)
CS	Management & Budget	Management & Budget	2020	101000	139100	600300	(1,147,785.17)
CS	Information Technology	Reprographics	2020	101000	142300	408380	(11.65)
CS	Information Technology	Reprographics	2020	101000	142300	600230	(1,255,422.75)
CS	Information Technology	IGC-Repro	2020	101000	142371	600240	(898,897.25)
CS	Information Technology	Records Management	2020	101000	142400	408380	(7.24)
CS	Information Technology	Records Management	2020	101000	142400	600250	(200,695.99)
CS	Human Resources	Employee Relations Admin	2020	101000	181000	408380	(6.24)
CS	Human Resources	Employee Relations Admin	2020	101000	181000	600620	(457,341.86)
CS	Human Resources	Labor Relations	2020	101000	184100	408380	(57.77)
CS	Human Resources	Labor Relations	2020	101000	184100	600610	(1,549,423.18)
CS	Human Resources	Employment	2020	101000	184500	406625	(436.66)
CS	Human Resources	Employment	2020	101000	184500	408380	(73.72)
CS	Human Resources	Employment	2020	101000	184500	600580	(1,973,420.18)
CS	Human Resources	Benefits	2020	101000	187100	406580	(70.20)
CS	Human Resources	Benefits	2020	101000	187100	406620	(149,269.91)
CS	Human Resources	Benefits	2020	101000	187100	408380	(42.83)
CS	Human Resources	Benefits	2020	101000	187100	600570	(504,280.88)
CS	Economic & Community [ OECD Admin		2020	101000	510500	408380	(13.24)
CS	Economic & Community [ OECD Admin		2020	101000	510500	601690	(720,830.95)
CS	Economic & Community [ OECD Data & Analytics		2020	101000	510600	408380	(16.83)
CS	Economic & Community [ OECD Data & Analytics		2020	101000	510600	600110	(918,060.75)
CS	Economic & Community [ IGC-OECD GIS Licensing		2020	101000	510671	601900	(277,945.43)
CS	Economic & Community [ IGC-OECD GIS Enterprise Prog		2020	101000	510672	601910	(539,272.31)
CS	Economic & Community [ IGC-OECD GIS Dept Support		2020	101000	510673	601920	(100,843.01)
CS	Maintenance & Operation Facility Maintenance		2020	101000	710500	406625	(2,750.43)
CS	Maintenance & Operation Facility Maintenance		2020	101000	710500	408380	(33,258.51)
CS	Maintenance & Operation Facility Maintenance		2020	101000	710500	601000	(5,464,195.35)
CS	Maintenance & Operation Facilities-Girdwood		2020	101000	710503	601010	(51,338.33)
CS	Maintenance & Operation Facilities-Eagle River Town Cen		2020	101000	710506	601020	(201,050.07)
CS	Maintenance & Operation Facilities-Fire Stations		2020	101000	710509	601030	(2,459,428.74)
CS	Maintenance & Operation Facilities-Libraries		2020	101000	710512	601040	(2,858,126.63)
CS	Maintenance & Operation Facilities-Fac Maint Whse		2020	101000	710515	601050	(379,112.38)
CS	Maintenance & Operation Facilities-Traffic		2020	101000	710518	601060	(95,783.06)
CS	Maintenance & Operation Facilities-RES/Historical Propert		2020	101000	710521	601070	(60,445.92)
CS	Maintenance & Operation Facilities-Areawide Parks & Rec		2020	101000	710524	601080	(801,588.62)
CS	Maintenance & Operation Facilities-Health and Human Se		2020	101000	710527	601090	(1,186,999.93)
CS	Maintenance & Operation Facilities-ARDSA		2020	101000	710530	601100	(8,924.73)



CSP Cat.	Department	Cost Center Description	Fiscal		Cost		Actuals
			Year	Fund	Center	Acct	
CS	Maintenance & Operation Facilities-Transit/Centers/Park &		2020	101000	710533	601110	(1,938,575.07)
CS	Maintenance & Operation Facilities-Fleet Maint		2020	101000	710536	601120	(385,424.40)
CS	Maintenance & Operation Facilities-Police / Substations		2020	101000	710539	601130	(1,613,378.43)
CS	Maintenance & Operation Facilities-Eagle River Parks & R		2020	101000	710542	601140	(1,930.88)
CS	Maintenance & Operation Facilities-City Hall		2020	101000	710545	601150	(243,704.14)
CS	Maintenance & Operation Facilities-Eagle River Parks & R		2020	101000	710548	601160	(1,407.85)
CS	Maintenance & Operation Facilities-Eagle River Parks & R		2020	101000	710551	601170	(29,488.78)
CS	Maintenance & Operation Facilities-Areawide Parks & Rec		2020	101000	710554	601180	(119,105.90)
CS	Maintenance & Operation Facilities-Heritage Land Bank		2020	101000	710557	601190	(30,139.32)
CS	Maintenance & Operation Facilities-Chugiak Fire Service /		2020	101000	710560	601670	(44,091.52)
CS	Maintenance & Operation Facilities-NC HJ Mac Mem Ctr		2020	101000	710563	601200	(10,955.77)
CS	Maintenance & Operation Facilities-NC Sullivan Arena		2020	101000	710566	601210	(5,420.60)
CS	Maintenance & Operation Facilities-NC Egan Center		2020	101000	710569	601220	(6,392.42)
CS	Maintenance & Operation Facilities-NC Dena'ina Center		2020	101000	710572	601230	(92.00)
CS	Maintenance & Operation Facilities-NC Performing Arts Ce		2020	101000	710575	601240	(37,822.71)
CS	Maintenance & Operation Facilities-NC Anchorage Museu		2020	101000	710581	601260	(3,462.18)
CS	Maintenance & Operation Facilities-Permit Center		2020	101000	710583	601680	(0.80)
CS	Maintenance & Operation Facility Capital Improvements		2020	101000	710800	405120	(1,989.62)
CS	Maintenance & Operation Facility Capital Improvements		2020	101000	710800	408380	(39.36)
CS	Maintenance & Operation Facility Capital Improvements		2020	101000	710800	601330	(1,171,505.66)
CS	Information Technology Admin Support		2020	607000	141100	408380	(44.93)
CS	Information Technology Admin Support		2020	607000	141100	600260	(1,746,974.87)
CS	Information Technology IGC - IT Security		2020	607000	143500	408380	(9.24)
CS	Information Technology IGC - IT Security		2020	607000	143500	601870	(769,569.67)
CS	Information Technology IGC - IT Security - All		2020	607000	143571	601840	(323,219.26)
CS	Information Technology IGC - IT Security - No AWWU		2020	607000	143572	601850	(446,350.41)
CS	Information Technology Fixed Assets		2020	607000	144000	440010	1,196,792.04
CS	Information Technology Fixed Assets		2020	607000	144000	600280	(1,494,021.81)
CS	Information Technology IGC - Microsoft EA SW & HW L		2020	607000	144003	601590	(1,394,991.22)
CS	Information Technology Application Services		2020	607000	145100	408380	(92.95)
CS	Information Technology Application Services		2020	607000	145100	600290	(2,576,718.27)
CS	Information Technology IGC - SAP Support Centr		2020	607000	146200	408380	(136.18)
CS	Information Technology IGC - SAP Support Centr		2020	607000	146200	601890	(8,413,814.19)
CS	Information Technology IGC - SAP Capital Recovery		2020	607000	146279	450010	(5,405,736.13)
CS	Information Technology IGC - SAP Capital Recovery		2020	607000	146279	601880	(4,431,751.46)
CS	Information Technology Projects & Procurement		2020	607000	147300	408380	(45.18)
CS	Information Technology Projects & Procurement		2020	607000	147300	600150	(1,075,245.31)
CS	Information Technology Desktop Services		2020	607000	148100	406625	(80.00)
CS	Information Technology Desktop Services		2020	607000	148100	408380	(51.34)
CS	Information Technology Desktop Services		2020	607000	148100	600200	(2,037,277.66)
CS	Information Technology Network Services		2020	607000	148200	408380	(67.57)
CS	Information Technology Network Services		2020	607000	148200	600100	(5,369,822.03)
CS	Information Technology IGC - Netwk Svcs - Servers		2020	607000	148271	600540	(2,803,786.66)
CS	Information Technology IGC - Netwk Svcs - Network		2020	607000	148272	601580	(1,678,731.05)
CS	Information Technology IGC - Netwk Svcs - Phones		2020	607000	148273	601600	(882,554.36)
CS	Information Technology Technology Services		2020	607000	148300	600070	(762,347.45)
							<u>(103,050,377.24)</u>



# Municipality of Anchorage

## Intragovernmental Charges Methodologies

**Department:** Assembly

**Contact:** Desirea Camacho

**Fund:** 101000

**Telephone:** 343-4376

**Cost Pool (Cost Center / Name):** 102003 / Clerk Agenda Control

**Services Provided:** Agenda control in the form of receiving, compiling, managing, and distributing Assembly agenda items submitted by all Municipal departments. Assembly agenda documents consist of items such as Assembly Information Memorandums (AIM), Assembly Memorandums (AM), Assembly Resolutions (AR), and Assembly Ordinances (AO). (AMC 2.20 - Assembly, Generally)

**Charge-Out Methodology:** Allocation of cost pool is based on the ratio of prior two year average of Assembly agenda items successfully processed through the electronic document routing system (PACE), attributable to the requesting department to total prior two year average number of Assembly agenda items successfully processed through PACE. Central service allocating departments are omitted and thus the cost that would be assigned to them is allocated to direct service departments receiving this service.

**Allocation Factor:**

Month-end automated calculation



# Municipality of Anchorage

## Intragovernmental Charges Methodologies

**Department:** Assembly

**Contact:** Desirea Camacho

**Fund:** 101000

**Telephone:** 343-4376

**Cost Pool (Cost Center / Name):** 102006 / Clerk Municipal Audit

**Services Provided:** Annual financial audit of Municipal entities performed by certified public accountants contracted through the Municipal purchasing process. The Municipal Clerk administers the contract for the annual municipal independent financial audit and such other contracts as may be assigned by ordinance. (AMC 2.20.055.B.7)

**Charge-Out Methodology:** Allocation of cost pool is based on the ratio of current year budgeted labor costs for each recipient cost center to total current year budgeted labor costs for all recipient cost centers. Central service allocating departments are omitted and thus the cost that would be assigned to them is allocated to the direct service departments receiving this service. AWWU, ML&P, and Port are not included in this allocation since the financial audit costs are charged to them directly.

**Allocation Factor:**

Month-end automated calculation



# Municipality of Anchorage

## Intragovernmental Charges Methodologies

**Department:** Assembly

**Contact:** Desirea Camacho

**Fund:** 101000

**Telephone:** 343-4376

**Cost Pool (Cost Center / Name):** 102007 / Clerk Liquor License

**Services Provided:** Business License Official's processing of liquor license applications and renewals for local government action. (AMC 2.20, AMC 2.30, AMC 12.05, and AMC 21.02)

**Charge-Out Methodology:** 100% to the Anchorage Police Department, Anchorage Police Service Area

**Allocation Factor:**

Month-end automated calculation



# Municipality of Anchorage

## Intragovernmental Charges Methodologies

**Department:** Assembly

**Contact:** Darrell Hess

**Fund:** 101000

**Telephone:** 343-4783

**Cost Pool (Cost Center / Name):** 103000 / Ombudsman

**Services Provided:** Investigation of complaints or inquires about the Municipality or Anchorage School District (ASD), per Article IV. - The Assembly Section 4.07 and Title 2 - Legislative Branch[1] Regulation 2.60 - Office of the Ombudsman.

Provides value by preventing complaints, increasing efficiencies, and saving money by addressing issues and recommending changes to municipal policies, forms, and codes. Can act as an outside voice that advocates for fairness in government.

**Charge-Out Methodology:** Allocation of cost pool is based on the ratio of prior two-year average of transaction counts of contracts, referrals, and cases indicated in City View software, attributable to each recipient department to the total number of transaction counts of contracts, referrals, and cases indicated in City View for all recipient departments. Central service allocating departments are omitted and thus the cost that would be assigned to them is allocated to the direct service departments receiving this service. Activity attributable to the Anchorage School District (ASD) or not attributable to any specific Municipal department is allocated to Areawide service area.

**Allocation Factor:**

Month-end automated calculation



# Municipality of Anchorage

## Intragovernmental Charges Methodologies

**Department:** Internal Audit

**Contact:** Mike Chadwick

**Fund:** 101000

**Telephone:** 343-4438

**Cost Pool (Cost Center / Name):** 106000 / Internal Audit

**Services Provided:** Provides the Assembly, school district, and Mayor with independent compliance and performance audits to determine whether government operations are adequately controlled.

**Charge-Out Methodology:** Allocation of cost pool is based on the ratio of current year budgeted labor costs for each recipient cost center to total current year budgeted labor costs for all recipient cost centers. Central service allocating departments are omitted and thus the cost that would be assigned to them is allocated to the direct service departments receiving this service.

**Allocation Factor:**

Month-end automated calculation



## Municipality of Anchorage

### Intragovernmental Charges Methodologies

**Department:** Office of the Mayor

**Contact:** Marilyn Banzhaf

**Fund:** 101000

**Telephone:** 343-4281

**Cost Pool (Cost Center / Name):** 111100 / Mayor

**Services Provided:** Provides leadership of all Municipal departments and ensuring compliance with charter and Municipal Code. (AMC 3.20.020 - Powers of the Mayor; 3.20.040 - Office of the Mayor)

**Charge-Out Methodology:** Allocation of cost pool is based on the ratio of current year budgeted labor costs for each recipient cost center to total current year budgeted labor costs for all recipient cost centers. Central service allocating departments are omitted and thus the cost that would be assigned to them is allocated to the direct service departments receiving this service. Unallowable costs will be removed from allocations before each year end.

**Allocation Factor:**

Month-end automated calculation



## Municipality of Anchorage

### Intragovernmental Charges Methodologies

**Department:** Municipal Manager

**Contact:** Heather MacAlpine

**Fund:** 101000

**Telephone:** 343-4890

**Cost Pool (Cost Center / Name):** 113200 / Office of Equal Opportunity

**Services Provided:** Provides primary functions of: Equal Employment Opportunity Program, Small Business Program, and Disadvantaged Business Enterprise (DBE) Liaison Officer (LO).

**Charge-Out Methodology:** Allocation of cost pool is based on the estimated percentage of time spent on each primary function provided by the Office of Equal Opportunity.

**Allocation Factor:**

Month-end automated calculation





# Municipality of Anchorage

## Intragovernmental Charges Methodologies

**Department:** Municipal Manager

**Contact:** Heather MacAlpine

**Fund:** 101000

**Telephone:** 343-4890

**Cost Pool (Cost Center / Name):** 113271 / IGC OEO Equal Employment Opportunity Prg

**Services Provided:** Equal Employment Opportunity Program - UMTA C 4704.1 and Title VII of the Civil Rights Act of 1964 - Department administers discrimination and harassment complaints, sexual harassment training, and the implementation of the Municipality of Anchorage Affirmative Action Plan

**Charge-Out Methodology:** Allocation of cost pool is based on the ratio of current year budgeted position counts for each recipient cost center to total current year budgeted position counts for all recipient cost centers. Central service allocating departments are omitted and thus the cost that would be assigned to them is allocated to the direct service departments receiving this service.

**Allocation Factor:**

Month-end automated calculation



## Municipality of Anchorage

### Intragovernmental Charges Methodologies

**Department:** Municipal Manager

**Contact:** Heather MacAlpine

**Fund:** 101000

**Telephone:** 343-4890

**Cost Pool (Cost Center / Name):** 113272 / IGC OEO Small Business

**Services Provided:** Provides Small Business Program for all Municipal small businesses, with a long-term goal of Municipal certifications for small business.

**Charge-Out Methodology:** 100% to the Municipal Manager Department, Office of Equal Opportunity Division, Areawide Service Area

**Allocation Factor:**

Month-end automated calculation



# Municipality of Anchorage

## Intragovernmental Charges Methodologies

**Department:** Municipal Manager

**Contact:** Heather MacAlpine

**Fund:** 101000

**Telephone:** 343-4890

**Cost Pool (Cost Center / Name):** 113273 / IGC-OEO-Contract DBE

**Services Provided:** Provides Disadvantaged Business Enterprise (DBE) Liaison Officer (LO), in compliance with requirements to receive federal funding from the Department of Transportation (DOT) (49CFR 26.37). Provides oversight of federal contract compliances, annual required reporting, ensures nondiscrimination in the award and administration of DOT-assisted projects with monitoring and enforcement, and Small Business Development Program. Assigned 5% DBE goal (minority business) for federal financial assistance.

**Charge-Out Methodology:** Allocation of cost pool is based on equal allocation to each Municipal department receiving federal funding from the DOT.

**Allocation Factor:**

Month-end automated calculation



# Municipality of Anchorage

## Intragovernmental Charges Methodologies

**Department:** Municipal Attorney

**Contact:** Steve Brister

**Fund:** 101000

**Telephone:** 343-4325

**Cost Pool (Cost Center / Name):** 115100 / Civil Law

**Services Provided:** Provides legal counsel for civil all Municipal matters. Provides value by providing legal counsel, support, and advice on specific legislation, the Municipal Code, Charter, and legislative procedures and also provides legal work with a low incidence of remand or reversal on appeal. Represents the Municipality in all litigation.

**Charge-Out Methodology:** Allocation of cost pool is based on the ratio of prior five-year average time spent representing requesting municipal departments on civil matters using "Time Matters" application software, to total prior five-year average time spent representing all municipal departments receiving this service. Central service allocating departments are omitted and thus the cost that would be assigned to them is allocated to direct service departments receiving this service.

**Allocation Factor:**

Month-end automated calculation



## Municipality of Anchorage

### Intragovernmental Charges Methodologies

**Department:** Municipal Attorney

**Contact:** Steve Brister

**Fund:** 101000

**Telephone:** 343-4325

**Cost Pool (Cost Center / Name):** 115200 / Criminal

**Services Provided:** Provides legal services to prosecute misdemeanor and traffic offenses. Maintains a high conviction rate resulting in punished offenders, deterred crime, and increased dollars awarded to victims in restitution.

**Charge-Out Methodology:** 100% to the Anchorage Police Department, Anchorage Police Service Area

**Allocation Factor:**

Month-end automated calculation



## Municipality of Anchorage

### Intragovernmental Charges Methodologies

**Department:** Municipal Attorney

**Contact:** Steve Brister

**Fund:** 101000

**Telephone:** 343-4325

**Cost Pool (Cost Center / Name):** 115300 / Administrative Hearing

**Services Provided:** Provides adjudication of administrative code violations. Provides a quick turnaround time for hearings and decisions resulting in an increase in citizen satisfaction with the hearing process.

**Charge-Out Methodology:** Allocation of cost pool is based on the ratio of prior five-year average time spent representing requesting municipal departments on civil matters using "Time Matters" application software, to total prior five-year average time spent representing all municipal departments receiving this service. Central service allocating departments are omitted and thus the cost that would be assigned to them is allocated to direct service departments receiving this service.

**Allocation Factor:**

Month-end automated calculation



# Municipality of Anchorage

## Intragovernmental Charges Methodologies

**Department:** Municipal Attorney

**Contact:** Steve Brister

**Fund:** 101000

**Telephone:** 343-4325

**Cost Pool (Cost Center / Name):** 115400 / Muni Attorney Administration

**Services Provided:** Provides administrative services to other sections within Office of the Municipal Attorney. Provides value by acting as chief counsel to the municipal departments, including the Mayor, Assembly, Anchorage School District, and all executive, legislative, department, agencies, boards, and commissions. Also adds value of keeping turnover low and providing for continuing legal education (CLE) training allows for high quality and efficient legal work.

**Charge-Out Methodology:** Allocation of cost pool is based on estimated time spent on each cost center in the Office of the Municipal Attorney and each municipal department, updated by Municipal Attorney annually.

**Allocation Factor:**

Month-end automated calculation



## Municipality of Anchorage

### Intragovernmental Charges Methodologies

**Department:** Municipal Manager

**Contact:** Craig Fetterman

**Fund:** 101000

**Telephone:** 343-1405

**Cost Pool (Cost Center / Name):** 121000 / Muni Manager Administration

**Services Provided:** The office of the Municipal Manager is responsible to the Mayor for overall Municipal Administrative policy, public safety, and operations of the Municipality and provides management operational oversight to multiple department's including the Municipality Utilities and Enterprises. (AMC 3.20.045 - Office of the Municipal Manager)

**Charge-Out Methodology:** Allocation of cost pool is based on the ratio of current year budgeted labor costs for each recipient cost center to total current year budgeted labor costs for all recipient cost centers. Central service allocating departments are omitted and thus the cost that would be assigned to them is allocated to the direct service departments receiving this service.

**Allocation Factor:**

Month-end automated calculation





## Municipality of Anchorage

### Intragovernmental Charges Methodologies

**Department:** Real Estate

**Contact:** Tawny Klebesadel

**Fund:** 101000

**Telephone:** 343-7534

**Cost Pool (Cost Center / Name):** 122300 / Leases Administration

**Services Provided:** Provides negotiations and management of municipal leases, acquisitions, and disposition of office, warehouse, and other types of municipal space, and municipal land required by all municipal agencies.

**Charge-Out Methodology:** Allocation of cost pool is based on ratio of square footage use by each lease facility cost pool, to total square footage within this cost pool.

**Allocation Factor:**

Month-end automated calculation



## Municipality of Anchorage

### Intragovernmental Charges Methodologies

**Department:** Real Estate

**Contact:** Tawny Klebesadel

**Fund:** 101000

**Telephone:** 343-7534

**Cost Pool (Cost Center / Name):** 122301 / Leases Parking Garage

**Services Provided:** Provides real estate lease services for municipal use of the Parking Garage at Sixth and G, Anchorage, AK 99501.

**Charge-Out Methodology:** 100% to the Public Transportation Department, Areawide Service Area

**Allocation Factor:**

Month-end automated calculation



## Municipality of Anchorage

### Intragovernmental Charges Methodologies

**Department:** Real Estate

**Contact:** Tawny Klebesadel

**Fund:** 101000

**Telephone:** 343-7534

**Cost Pool (Cost Center / Name):** 122302 / Leases City Hall

**Services Provided:** Provides real estate lease services for municipal use of City Hall located at 632 West Sixth Avenue, Anchorage, AK 99501.

**Charge-Out Methodology:** Allocation of cost pool is based on ratio of square footage use by department, to total square footage within this cost pool. Charged to all departments, including central service allocating departments that receive this service.

**Allocation Factor:**

Month-end automated calculation



## Municipality of Anchorage

### Intragovernmental Charges Methodologies

**Department:** Real Estate

**Contact:** Tawny Klebesadel

**Fund:** 101000

**Telephone:** 343-7534

**Cost Pool (Cost Center / Name):** 122303 / Leases ERTC

**Services Provided:** Provides real estate lease services for municipal use of the Eagle River Town Center (ERTC) located at 12001 Business Boulevard, Eagle River, AK 99577. Does not include Unit #3.

**Charge-Out Methodology:** Allocation of cost pool is based on ratio of square footage use by department, to total square footage within this cost pool. Charged to all departments, including central service allocating departments that receive this service.

**Allocation Factor:**

Month-end automated calculation



## Municipality of Anchorage

### Intragovernmental Charges Methodologies

**Department:** Real Estate

**Contact:** Tawny Klebesadel

**Fund:** 101000

**Telephone:** 343-7534

**Cost Pool (Cost Center / Name):** 122304 / Leases Libraries

**Services Provided:** Provides real estate lease services for municipal use of the Muldoon Library in the North East Community Center / Muldoon Community Center located at 1251 Muldoon Road, Anchorage, AK 99504.

**Charge-Out Methodology:** 100% to the Library Department, Areawide Service Area.

**Allocation Factor:**

Month-end automated calculation



# Municipality of Anchorage

## Intragovernmental Charges Methodologies

**Department:** Real Estate

**Contact:** Tawny Klebesadel

**Fund:** 101000

**Telephone:** 343-7534

**Cost Pool (Cost Center / Name):** 122306 / Leases Traffic

**Services Provided:** Provides real estate lease services for municipal use of the Traffic Signals Engineering Warehouse / Beardsley Building.

**Charge-Out Methodology:** 100% to the Traffic Department, Areawide Service Area

**Allocation Factor:**

Month-end automated calculation



# Municipality of Anchorage

## Intragovernmental Charges Methodologies

**Department:** Real Estate

**Contact:** Tawny Klebesadel

**Fund:** 101000

**Telephone:** 343-7534

**Cost Pool (Cost Center / Name):** 122307 / Leases Recreation

**Services Provided:** Provides real estate lease services for municipal use of North East Community Center / Muldoon Community Center located at 1251 Muldoon Road, Anchorage, AK 99504.

**Charge-Out Methodology:** 100% to the Anchorage Parks & Recreation Department, Anchorage Parks & Recreation Service Area

**Allocation Factor:**  
Month-end automated calculation



## Municipality of Anchorage

### Intragovernmental Charges Methodologies

**Department:** Real Estate

**Contact:** Tawny Klebesadel

**Fund:** 101000

**Telephone:** 343-7534

**Cost Pool (Cost Center / Name):** 122309 / Leases Permit Center

**Services Provided:** Provides real estate lease services for municipal use of the Anchorage Permit & Development Center located at 4700 Elmore Road, Anchorage, AK 99507.

**Charge-Out Methodology:** Allocation of cost pool is based on ratio of square footage use by department, to total square footage within this cost pool. Charged to all departments, including central service allocating departments that receive this service.

**Allocation Factor:**

Month-end automated calculation





# Municipality of Anchorage

## Intragovernmental Charges Methodologies

**Department:** Real Estate

**Contact:** Tawny Klebesadel

**Fund:** 101000

**Telephone:** 343-7534

**Cost Pool (Cost Center / Name):** 122310 / Leases Police

**Services Provided:** Provides real estate leasing services for municipal use of facilities located at: the State of Alaska, Boney Court House for Warrants located at 303 K Street, Anchorage, AK 99501, and the Spenard / Seely Substation located at Westchester Lagoon (the Spenard / Seely Substation will not be used after 2019).

**Charge-Out Methodology:** 100% to the Anchorage Police Department, Anchorage Police Service Area

**Allocation Factor:**

Month-end automated calculation



# Municipality of Anchorage

## Intragovernmental Charges Methodologies

**Department:** Municipal Manager

**Contact:** Craig Fetterman

**Fund:** 101000

**Telephone:** 343-1405

**Cost Pool (Cost Center / Name):** 124200 / Office of Emergency Management

**Services Provided:** Provides emergency response preparedness. Provides emergency preparedness, planning, Emergency Operations Center (EOC) training and education outreach and ensures compliance with federal regulations. Services provided to all Municipal departments except AWWU and ML&P.

**Charge-Out Methodology:** Allocation of cost pool is based on the ratio of current year budgeted labor costs for each recipient cost center to total current year budgeted labor costs for all recipient cost centers. Central service allocating departments are omitted and thus the cost that would be assigned to them is allocated to the direct service departments receiving this service.

**Allocation Factor:**  
Month-end automated calculation



## Municipality of Anchorage

### Intragovernmental Charges Methodologies

**Department:** Municipal Manager

**Contact:** Tracy Mears

**Fund:** 101000

**Telephone:** 343-2527

**Cost Pool (Cost Center / Name):** 124700 / Risk Management

**Services Provided:** Processes claims for and against the Municipality from accident, injury, or property damage and related collections administration.

**Charge-Out Methodology:** 100% to the Municipal Manager Department, Risk Division, General Liability / Workers' Compensation Fund (602).

**Allocation Factor:**

Month-end automated calculation



# Municipality of Anchorage

## Intragovernmental Charges Methodologies

**Department:** Municipal Manager

**Contact:** Tracy Mears

**Fund:** 101000

**Telephone:** 343-2527

**Cost Pool (Cost Center / Name):** 124900 / Safety

**Services Provided:** Provides safety training and liability mitigation, with a mission to reduce workers' compensation and tort liability claims.

**Charge-Out Methodology:** 100% to the Municipal Manager Department, Risk Division, General Liability / Workers' Compensation Fund (602).

**Allocation Factor:**

Month-end automated calculation



# Municipality of Anchorage

## Intragovernmental Charges Methodologies

**Department:** Finance

**Contact:** Linda Culver

**Fund:** 101000

**Telephone:** 343-6765

**Cost Pool (Cost Center / Name):** 132100 / Controller Administration

**Services Provided:** Houses the Controller position that provides oversight of the administration of the Controller division and preparation of the Comprehensive Annual Financial Report (CAFR).

**Charge-Out Methodology:** Allocation of cost pool is based on the estimated percentage of time spent with each agency under the Controller Division.

**Allocation Factor:**

Month-end automated calculation



# Municipality of Anchorage

## Intragovernmental Charges Methodologies

**Department:** Finance

**Contact:** Linda Culver

**Fund:** 101000

**Telephone:** 343-6765

**Cost Pool (Cost Center / Name):** 132200 / Central Accounting

**Services Provided:** Provides and maintains Municipal accounting records and prepares the Comprehensive Annual Financial Report (CAFR).

Services provided include:

- Grant accounting
- Reconciliation accounting
- Fund accounting
  - Fixed asset management
  - Fiduciary fund accounting
  - Enterprise fund accounting
- Subject Matter Experts (SMEs) for some SAP functionality

**Charge-Out Methodology:** Allocation of cost pool is based on the ratio of estimated time spent on each municipal fund to total time spend on all municipal funds.

**Allocation Factor:**

Month-end automated calculation



# Municipality of Anchorage

## Intragovernmental Charges Methodologies

**Department:** Finance

**Contact:** Renee Behrendt

**Fund:** 101000

**Telephone:** 343-6935

**Cost Pool (Cost Center / Name):** 132300 / Payroll

**Services Provided:** Issues payroll checks and maintains employee records for taxes and other deductions.

**Charge-Out Methodology:** Allocation of cost pool is based on the ratio of budgeted labor associated with position duties.

**Allocation Factor:**

Month-end automated calculation



## Municipality of Anchorage

### Intragovernmental Charges Methodologies

**Department:** Finance

**Contact:** David Hertrich

**Fund:** 101000

**Telephone:** 343-6937

**Cost Pool (Cost Center / Name):** 132400 / Accounts Payable

**Services Provided:** Processes payments for goods and services purchased for all Municipal departments, including enterprise and utilities.

**Charge-Out Methodology:** Allocation of cost pool is based on the prior two years percentage of vouchers per department to total number of vouchers processed for all recipients, includes enterprise and utilities.

**Allocation Factor:**

Month-end automated calculation





# Municipality of Anchorage

## Intragovernmental Charges Methodologies

**Department:** Finance

**Contact:** Blyss Cruz

**Fund:** 101000

**Telephone:** 343-6965

**Cost Pool (Cost Center / Name):** 134100 / Treasury Administration

**Services Provided:** Provides direction and supervision for all Treasury sections including Tax Billing and collection, Remittance Processing, and Revenue Management, and also monitors and reports on the Municipality of Anchorage (MOA) Trust Fund (730), and the Police/Fire Retiree Medical Liability Fund (281). No direct allocation required for the property tax collection cost pool as cost are held as an area wide tax cost.

**Charge-Out Methodology:** Allocation of cost pool is based on the ratio of current year budgeted position costs in each agency within the Treasury Division after MOA Trust Fund (730) and Police/Fire Retiree Medical Liability Fund (281) are charged for estimated time spent.

**Allocation Factor:**

Month-end automated calculation



# Municipality of Anchorage

## Intragovernmental Charges Methodologies

**Department:** Finance

**Contact:** Blyss Cruz

**Fund:** 101000

**Telephone:** 343-6965

**Cost Pool (Cost Center / Name):** 134200 / Revenue Management

**Services Provided:** Performs all functions associated with administration and enforcement of self-reported taxes (room taxes, rental vehicles, and tobacco taxes) and management and analysis of General Government revenues.

**Charge-Out Methodology:** Allocation of cost pool is based on the estimated time spent, using budgeted labor costs for specifically dedicated positions for year.

**Allocation Factor:**

Month-end automated calculation



# Municipality of Anchorage

## Intragovernmental Charges Methodologies

**Department:** Finance

**Contact:** Blyss Cruz

**Fund:** 101000

**Telephone:** 343-6965

**Cost Pool (Cost Center / Name):** 134271 / IGC Rev Mgmt E911

**Services Provided:** Administers accounts receivable and processes payments received for E911 revenue.

**Charge-Out Methodology:** 50% to the Anchorage Fire Department and 50% to the Anchorage Police Department, all to the E911 Surcharge Fund (211).

**Allocation Factor:**

Month-end automated calculation



# Municipality of Anchorage

## Intragovernmental Charges Methodologies

**Department:** Finance

**Contact:** Blyss Cruz

**Fund:** 101000

**Telephone:** 343-6965

**Cost Pool (Cost Center / Name):** 134272 / IGC Rev Mgmt PSAR Billing

**Services Provided:** Administers General Government accounts receivable and processes payments received for PSAR billing. Utilities excluded. Service to utilities limited to payment processing and considered minimal and not allocated.

**Charge-Out Methodology:** Allocation of cost pool is based on the number of invoices prior year generated out of the module.

**Allocation Factor:**

Month-end automated calculation



## Municipality of Anchorage

### Intragovernmental Charges Methodologies

**Department:** Finance

**Contact:** Blyss Cruz

**Fund:** 101000

**Telephone:** 343-6965

**Cost Pool (Cost Center / Name):** 134273 / IGC Rev Mgmt Cash Receipts

**Services Provided:** Records and audits all paper-based and limited electronic cash receipts for all departments city-wide. These functions are based on MOA cash handling policy that ensures quality of data and protects against monetary loss. Utilities included.

**Charge-Out Methodology:** Allocation of cost pool is based on number of prior year cash receipts generated by each recipient department over all cash receipts generated by all departments in the pool

**Allocation Factor:**

Month-end automated calculation



# Municipality of Anchorage

## Intragovernmental Charges Methodologies

**Department:** Finance

**Contact:** Blyss Cruz

**Fund:** 101000

**Telephone:** 343-6965

**Cost Pool (Cost Center / Name):** 134274 / IGC Rev Mgmt In House Collections

**Services Provided:** Department administers city-wide contract with a collection agency to refer and collect delinquent accounts receivable for fines and invoiced services, including, but not limited to delinquent self-reporting taxes, unpaid ambulance fees, library fees, utility bills, miscellaneous billings, and billings from project 134272 (PSAR billings). Diminimus amounts (less than .2%) are not directly allocated.

**Charge-Out Methodology:** Allocation of cost pool is based on prior year transaction count of accounts referred to the contracted collection agency.

**Allocation Factor:**

Month-end automated calculation



# Municipality of Anchorage

## Intragovernmental Charges Methodologies

**Department:** Finance

**Contact:** Blyss Cruz

**Fund:** 101000

**Telephone:** 343-6965

**Cost Pool (Cost Center / Name):** 134275 / IGC Rev Mgmt DCF

**Services Provided:** Administers collection efforts related to Delinquent Criminal/Civil Fines & Fees (DCF) on behalf of APD & Legal Departments, excluding utilities. DCF is a specialized function, and these functional costs are allocated to APD and Legal Department.

**Charge-Out Methodology:** Allocation of cost pool is based on prior year transaction count by department.

**Allocation Factor:**

Month-end automated calculation



# Municipality of Anchorage

## Intragovernmental Charges Methodologies

**Department:** Finance

**Contact:** Blyss Cruz

**Fund:** 101000

**Telephone:** 343-6965

**Cost Pool (Cost Center / Name):** 134276 / IGC Exter Collect Agency Recov

**Services Provided:** Department administers recoveries under city-wide collection agency contract, inclusive of recoveries for utilities. Diminimus amounts (less than .2%) are not directly allocated.

**Charge-Out Methodology:** Allocation of cost pool is based on the cost to process recoveries based on prior year transaction count of recoveries by department.

**Allocation Factor:**

Month-end automated calculation





## Municipality of Anchorage

### Intragovernmental Charges Methodologies

**Department:** Finance

**Contact:** Blyss Cruz

**Fund:** 101000

**Telephone:** 343-6965

**Cost Pool (Cost Center / Name):** 134600 / Tax Billing

**Services Provided:** Provides billing, collections, and management of property tax receivables, processes tax payments, and requests for tax information Area-Wide. Utilities excluded.

**Charge-Out Methodology:** Allocation of cost pool is based on direct cost of activities associated with tax receivables to stay in Areawide or to become a pool that is sent to multiple departments, including utilities.

**Allocation Factor:**

Month-end automated calculation



## Municipality of Anchorage

### Intragovernmental Charges Methodologies

**Department:** Finance

**Contact:** Blyss Cruz

**Fund:** 101000

**Telephone:** 343-6965

**Cost Pool (Cost Center / Name):** 134671 / IGC Tax Billing Utilities

**Services Provided:** Provides cashiering function associated with processing payments at Treasury public counter for many Municipal departments, including utilities.

**Charge-Out Methodology:** Allocation of cost pool is based costs associated with Treasury public counter payments based on volume of prior year payment transactions for identified departments, including utilities.

**Allocation Factor:**

Month-end automated calculation



## Municipality of Anchorage

### Intragovernmental Charges Methodologies

**Department:** Finance

**Contact:** Blyss Cruz

**Fund:** 101000

**Telephone:** 343-6965

**Cost Pool (Cost Center / Name):** 134700 / Remittance Processing

**Services Provided:** Processes property tax and Municipal utility payments and ensures proper posting to customer accounts for Areawide and Municipal utility agencies.

**Charge-Out Methodology:** Allocation of cost pool is based on the prior year number of property tax remittance bills processed to stay in Areawide or to become a pool that is sent to Municipal utility agencies.

**Allocation Factor:**

Month-end automated calculation



# Municipality of Anchorage

## Intragovernmental Charges Methodologies

**Department:** Finance

**Contact:** Blyss Cruz

**Fund:** 101000

**Telephone:** 343-6965

**Cost Pool (Cost Center / Name):** 134771 / IGC Remittance Processing

**Services Provided:** Processes property tax and Municipal utility payments and ensures proper posting to customer accounts for Municipal utility agencies.

**Charge-Out Methodology:** Allocation of cost pool is based on the prior year number of bills processed and type of utility.

**Allocation Factor:**

Month-end automated calculation



# Municipality of Anchorage

## Intragovernmental Charges Methodologies

**Department:** Chief Fiscal Officer

**Contact:** Marilyn Banzhaf

**Fund:** 101000

**Telephone:** 343-4281

**Cost Pool (Cost Center / Name):** 137000 / Chief Fiscal Officer

**Services Provided:** Oversees all financial matters of the Municipality and is responsible for the management and operation of the departments as set forth in municipal code. (AMC 3.20.050 - Office of the Chief Fiscal Officer)

**Charge-Out Methodology:** Allocation of cost pool is based on the ratio of current year budgeted labor costs for each recipient cost center to total current year budgeted labor costs for all recipient cost centers. Central service allocating departments are omitted and thus the cost that would be assigned to them is allocated to the direct service departments receiving this service. Unallowable costs will be removed from allocations before each year end.

**Allocation Factor:**

Month-end automated calculation



## Municipality of Anchorage

### Intragovernmental Charges Methodologies

**Department:** Purchasing

**Contact:** Ronald Hadden

**Fund:** 101000

**Telephone:** 343-4170

**Cost Pool (Cost Center / Name):** 138100 / Purchasing Services

**Services Provided:** Provides procurement services to Municipal departments in compliance with Anchorage Municipal Code Title 7 and ensures contract compliance

**Charge-Out Methodology:** Allocation of cost pool is based on weighted transaction and or line count of number of purchase orders, change orders, accounts payable transactions in gross, requisitions, and credit card activity.

**Allocation Factor:**

Month-end automated calculation



## Municipality of Anchorage

### Intragovernmental Charges Methodologies

**Department:** Office of Management & Budget

**Contact:** Marilyn Banzhaf

**Fund:** 101000

**Telephone:** 343-4281

**Cost Pool (Cost Center / Name):** 139100 / Management & Budget

**Services Provided:** Provides fiscal and operational planning, monitoring compliance with Municipal policies and standards, management analysis, budgeting and program evaluation, and preparation and management of the Municipal budget.

Provide fiscal responsibility and support pursuant to Anchorage Municipal Code (AMC 6.10) and the Mayors vision of a safe, secure, and strong municipality.

**Charge-Out Methodology:** Allocation of cost pool is based on the ratio of estimated time spent on each municipal fund to total time spend on all municipal funds.

**Allocation Factor:**

Month-end automated calculation



## Municipality of Anchorage

### Intragovernmental Charges Methodologies

**Department:** Information Technology

**Contact:** Linda Dotzler

**Fund:** 607000

**Telephone:** 343-6914

**Cost Pool (Cost Center / Name):** 141100 / Administration Support

**Services Provided:** Provides administrative services within the Information Technology department.

**Charge-Out Methodology:** Allocation of cost pool is based on the ratio of current year budgeted labor costs for each recipient cost center to total current year budgeted labor costs for all recipient cost centers.

**Allocation Factor:**

Month-end automated calculation





## Municipality of Anchorage

### Intragovernmental Charges Methodologies

**Department:** Information Technology

**Contact:** Linda Dotzler

**Fund:** 101000

**Telephone:** 343-6914

**Cost Pool (Cost Center / Name):** 142300 / Reprographics / Mailroom

**Services Provided:** Provides graphic design, forms coordination, printing, mailroom, and courier services for all Municipal departments.

**Charge-Out Methodology:** Allocation of cost pool is based on budgeted cost of activities associated with mailroom: to stay in Areawide, or reprographics: to become a pool that is sent to multiple departments.

**Allocation Factor:**

Month-end automated calculation



## Municipality of Anchorage

### Intragovernmental Charges Methodologies

**Department:** Information Technology

**Contact:** Linda Dotzler

**Fund:** 101000

**Telephone:** 343-6914

**Cost Pool (Cost Center / Name):** 142371 / IGC Repro

**Services Provided:** Provides graphic design, forms coordination, and printing for all Municipal departments

**Charge-Out Methodology:** Allocation of cost pool is based on prior two-year average use of reprographics services based on Service Request forms. AWWU and ML&P are excluded as they are billed directly.

**Allocation Factor:**

Month-end automated calculation



## Municipality of Anchorage

### Intragovernmental Charges Methodologies

**Department:** Information Technology

**Contact:** Shawn McTaggart

**Fund:** 101000

**Telephone:** 343-4286

**Cost Pool (Cost Center / Name):** 142400 / Records Management

**Services Provided:** Provides storage, archiving, and disposal of hard-copy written records for all Municipal departments that opt to use this service.

**Charge-Out Methodology:** Allocation of cost pool is based on prior two-year use of records storage space by box count.

**Allocation Factor:**  
Month-end automated calculation



## Municipality of Anchorage

### Intragovernmental Charges Methodologies

**Department:** Information Technology

**Contact:** Linda Dotzler

**Fund:** 607000

**Telephone:** 343-6914

**Cost Pool (Cost Center / Name):** 142500 / Financial Services

**Services Provided:** Provides budgeting, accounts payable, procurement, IGCs, fixed assets, software asset management services for the Information Technology department and approval of software and hardware purchases and software management for other municipal departments.

**Charge-Out Methodology:** Allocation of cost pool is based on the ratio of current year budgeted labor costs for each recipient cost center to total current year budgeted labor costs for all recipient cost centers.

**Allocation Factor:**

Month-end automated calculation



# Municipality of Anchorage

## Intragovernmental Charges Methodologies

**Department:** Information Technology

**Contact:** Linda Dotzler

**Fund:** 607000

**Telephone:** 343-6914

**Cost Pool (Cost Center / Name):** 143500 / IT Security

**Services Provided:** Provides enterprise management of all Municipal systems and Drive Encryption; audits departments to verify that regulatory requirements are met; and provides IT security from internal and external threats to the operation of the Municipal computer system.

**Charge-Out Methodology:** Allocation of cost pool is based on the ratio of current year budgeted labor costs for each recipient cost center to total current year budgeted labor costs for all recipient cost centers. Central service allocating departments are omitted and thus the cost that would be assigned to them is allocated to the direct service departments receiving this service.

**Allocation Factor:**

Month-end automated calculation



# Municipality of Anchorage

## Intragovernmental Charges Methodologies

**Department:** Information Technology

**Contact:** Linda Dotzler

**Fund:** 607000

**Telephone:** 343-6914

**Cost Pool (Cost Center / Name):** 143571 / IT Security - ALL

**Services Provided:**

**Charge-Out Methodology:**

**Allocation Factor:**



# Municipality of Anchorage

## Intragovernmental Charges Methodologies

**Department:** Information Technology

**Contact:** Linda Dotzler

**Fund:** 607000

**Telephone:** 343-6914

**Cost Pool (Cost Center / Name):** 143572 / IT Security – No AWWU

**Services Provided:**

**Charge-Out Methodology:**

**Allocation Factor:**



## Municipality of Anchorage

### Intragovernmental Charges Methodologies

**Department:** Information Technology

**Contact:** Linda Dotzler

**Fund:** 607000

**Telephone:** 343-6914

**Cost Pool (Cost Center / Name):** 144000 / Fixed Assets

**Services Provided:** Provides recovery of debt-funded technology-related capital projects via depreciation and interest expense. Includes licenses, laptops, and other IT owned assets used to manage and maintain the IT environment and support customers.

**Charge-Out Methodology:** Allocation of cost pool is based on ratio of budgeted labor for each recipient to total budgeted labor of all recipients with AWWU and ML&P adjusted by application use estimate.

**Allocation Factor:**

Month-end automated calculation





# Municipality of Anchorage

## Intragovernmental Charges Methodologies

**Department:** Information Technology

**Contact:** Linda Dotzler

**Fund:** 607000

**Telephone:** 343-6914

**Cost Pool (Cost Center / Name):** 144003 / IGC MicroSoft EA SW & HW Upgrades

**Services Provided:** Provides MicroSoft Enterprise Agreement (MS EA) hardware and software maintenance and subscription costs that ensure that the municipality has current application software and recovery of muni-wide computer replacements. AWWU and ML&P are excluded because they do not receive this service.

**Charge-Out Methodology:** Allocation of cost pool is based on ratio of total computers for each recipient department to total computers for all recipient departments. AWWU and ML&P are excluded.

**Allocation Factor:**

Month-end automated calculation



## Municipality of Anchorage

### Intragovernmental Charges Methodologies

**Department:** Information Technology

**Contact:** Linda Dotzler

**Fund:** 607000

**Telephone:** 343-6914

**Cost Pool (Cost Center / Name):** 145100 / Application Services

**Services Provided:** Provides support for enterprise and department application systems. Some examples of applications supported are: Pay Advice; Payment Net; PeopleSoft; SAP; Muniverse; Newsletters; Open Enrollment; Outage Tracking SharePoint Site; Muni.org (Administration & Content); Communications Tracking; QuesticaBudget; and NEO-Gov New Hire Onboarding.

**Charge-Out Methodology:** Allocation of cost pool is based on the ratio of budgeted labor for each recipient to total budgeted labor of all recipients with AWWU and MLP adjusted by application use estimate.

**Allocation Factor:**

Month-end automated calculation



# Municipality of Anchorage

## Intragovernmental Charges Methodologies

**Department:** Information Technology

**Contact:** Linda Dotzler

**Fund:** 607000

**Telephone:** 343-6914

**Cost Pool (Cost Center / Name):** 145500 / ERP Services

**Services Provided:** Provides support for PeopleSoft Applications.

**Charge-Out Methodology:** Allocation of cost pool is based on transaction counts in PeopleSoft. ML&P and AWWU by transaction counts and general government and enterprise departments by line count to determine usage at the DeptID level (transaction count at the business unit level).

**Allocation Factor:**

Month-end automated calculation



## Municipality of Anchorage

### Intragovernmental Charges Methodologies

**Department:** Information Technology

**Contact:** Linda Dotzler

**Fund:** 607000

**Telephone:** 343-6914

**Cost Pool (Cost Center / Name):** 146200 / IGC - SAP Support Center

**Services Provided:** Provides operating support for SAP applications, including consulting, security / access, and training.

**Charge-Out Methodology:** Allocation of cost pool is based on approved "SAP Capital Expenditure Cost Pools and Allocation Recommendations" that: identified SAP modules / functions, determined factors to best represent cost-causer / cost-payer for each module / function, and then weighted each module / function by the estimated cost of each SAP module.

**Allocation Factor:**

Month-end automated calculation



## Municipality of Anchorage

### Intragovernmental Charges Methodologies

**Department:** Information Technology

**Contact:** Linda Dotzler

**Fund:** 607000

**Telephone:** 343-6914

**Cost Pool (Cost Center / Name):** 147300 / Projects & Procurement

**Services Provided:** Provides oversight for most municipal IT projects, procurements, and technology refresh for all municipal departments excluding AWWU.

**Charge-Out Methodology:** Allocation of cost pool is based on the ratio of current year budgeted labor costs for each recipient cost center to total current year budgeted labor costs for all recipient cost centers. Central service allocating departments are omitted and thus the cost that would be assigned to them is allocated to the direct service departments receiving this service.

**Allocation Factor:**

Month-end automated calculation



## Municipality of Anchorage

### Intragovernmental Charges Methodologies

**Department:** Information Technology

**Contact:** Linda Dotzler

**Fund:** 607000

**Telephone:** 343-6914

**Cost Pool (Cost Center / Name):** 148100 / Desktop Services

**Services Provided:** Provides desktop computer hardware and software, peripheral equipment support and installation, and help desk services.

**Charge-Out Methodology:** Allocation of cost pool is based on actual direct cost to provide desktop services to the Department of Health and Human Services, Library Department, and all other municipal departments, excluding Police, AWWU, and ML&P.

**Allocation Factor:**

Month-end automated calculation



## Municipality of Anchorage

### Intragovernmental Charges Methodologies

**Department:** Information Technology

**Contact:** Linda Dotzler

**Fund:** 607000

**Telephone:** 343-6914

**Cost Pool (Cost Center / Name):** 148200 / Network Services

**Services Provided:** Provides network systems support, communications system support and server systems support design and installation services.

**Charge-Out Methodology:** Allocation of cost pool is based on budgeted amount of labor and fixed costs such as servers and equipment split by work order count or area of assignment, with supplies split out 1/3 to each of the three service pools.

**Allocation Factor:**

Month-end automated calculation



## Municipality of Anchorage

### Intragovernmental Charges Methodologies

**Department:** Information Technology

**Contact:** Linda Dotzler

**Fund:** 607000

**Telephone:** 343-6914

**Cost Pool (Cost Center / Name):** 148271 / IGC Netwk Svcs Servers

**Services Provided:** Provides functionality for other programs, devices, or clients along with an environment that supports sharing data or resources among multiple clients, or performs computations for clients.

**Charge-Out Methodology:** Allocation of cost pool is based on the ratio of current year budgeted position counts for each recipient cost center to total current year budgeted position counts for all recipient cost centers after AWWU and ML&P are charged the percent of applications they access to all applications available for use muni-wide.

**Allocation Factor:**

Month-end automated calculation





# Municipality of Anchorage

## Intragovernmental Charges Methodologies

**Department:** Information Technology

**Contact:** Linda Dotzler

**Fund:** 607000

**Telephone:** 343-6914

**Cost Pool (Cost Center / Name):** 148272 / IGC Netwk Svcs Network

**Services Provided:** Provides network systems support, design, and installation services.

**Charge-Out Methodology:** Allocation of cost pool is based on ratio of total computers and printers for each recipient department to total computers and printers for all recipient departments.

**Allocation Factor:**

Month-end automated calculation



## Municipality of Anchorage

### Intragovernmental Charges Methodologies

**Department:** Information Technology

**Contact:** Linda Dotzler

**Fund:** 607000

**Telephone:** 343-6914

**Cost Pool (Cost Center / Name):** 148273 / IGC Netwk Svcs Phones

**Services Provided:** Provides communications system support.

**Charge-Out Methodology:** Allocation of cost pool is based on ratio of total number of telephone lines for each recipient department to total number of telephone lines for all recipient departments.

**Allocation Factor:**

Month-end automated calculation



# Municipality of Anchorage

## Intragovernmental Charges Methodologies

**Department:** Information Technology

**Contact:** Linda Dotzler

**Fund:** 607000

**Telephone:** 343-6914

**Cost Pool (Cost Center / Name):** 148300 / Technology Services

**Services Provided:** Provides mainframe hardware, software, and peripheral equipment support design and installation for usage of mainframe system.

**Charge-Out Methodology:** Allocation of cost pool is based on actual use of mainframe system sorted by department and employee ID. Background system processing is allocated on a ratio of the actual usage of mainframe to total Municipality wide usage of the mainframe.

**Allocation Factor:**

Month-end automated calculation



# Municipality of Anchorage

## Intragovernmental Charges Methodologies

**Department:** Information Technology

**Contact:** Linda Dotzler

**Fund:** 607000

**Telephone:** 343-6914

**Cost Pool (Cost Center / Name):** 149001 / CAMA Depreciation

**Services Provided:** Provides capital project recovery and operating support for the computer assisted mass appraisal (CAMA) project.

**Charge-Out Methodology:** 100% to the Property Appraisal, Areawide Service Area.

**Allocation Factor:**

Month-end automated calculation



# Municipality of Anchorage

## Intragovernmental Charges Methodologies

**Department:** Human Resources

**Contact:** Brayack, Patti A.

**Fund:** 101000

**Telephone:** 343-4516

**Cost Pool (Cost Center / Name):** 181000 / Human Resources Administration

**Services Provided:** Provides administrative support to the department divisions within the department.

**Charge-Out Methodology:** Allocation of cost pool is based on the ratio of current year budgeted labor costs for each recipient cost center to total current year budgeted labor costs for all recipient cost centers.

**Allocation Factor:**

Month-end automated calculation



## Municipality of Anchorage

### Intragovernmental Charges Methodologies

**Department:** Human Resources

**Contact:** Brayack, Patti A.

**Fund:** 101000

**Telephone:** 343-4516

**Cost Pool (Cost Center / Name):** 184100 / Labor Relations

**Services Provided:** Provides labor relations and negotiation services and oversees Municipal training.

**Charge-Out Methodology:** Allocation of cost pool is based on the ratio of current year budgeted labor costs for each recipient cost center to total current year budgeted labor costs for all recipient cost centers. Central service allocating departments are omitted and thus the cost that would be assigned to them is allocated to the direct service departments receiving this service.

**Allocation Factor:**

Month-end automated calculation



# Municipality of Anchorage

## Intragovernmental Charges Methodologies

**Department:** Employee Relations

**Contact:** Brayack, Patti A.

**Fund:** 101000

**Telephone:** 343-4516

**Cost Pool (Cost Center / Name):** 184500 / Employment

**Services Provided:** Provides employment recruitment and classification services, provides pay review, and manages employee records for all Municipal departments.

**Charge-Out Methodology:** Allocation of cost pool is based on the ratio of current year budgeted labor costs for each recipient cost center to total current year budgeted labor costs for all recipient cost centers. Central service allocating departments are omitted and thus the cost that would be assigned to them is allocated to the direct service departments receiving this service.

**Allocation Factor:**

Month-end automated calculation



# Municipality of Anchorage

## Intragovernmental Charges Methodologies

**Department:** Employee Relations

**Contact:** Brayack, Patti A.

**Fund:** 101000

**Telephone:** 343-4516

**Cost Pool (Cost Center / Name):** 187100 / Benefits

**Services Provided:** Develops, maintains, and administers cost effective and competitive employee benefit programs. Responsible for health and wellness and retirement benefit administration.

**Charge-Out Methodology:** Allocation of cost pool is based on the ratio of current year budgeted labor costs for each recipient cost center to total current year budgeted labor costs for all recipient cost centers. Central service allocating departments are omitted and thus the cost that would be assigned to them is allocated to the direct service departments receiving this service.

**Allocation Factor:**

Month-end automated calculation





## Municipality of Anchorage

### Intragovernmental Charges Methodologies

**Department:** Office of Economic & Community Development  
Renee Stewart

**Contact:**

**Fund:** 101000

**Telephone:** 343-4481

**Cost Pool (Cost Center / Name):** 510500 / OECD Administration

**Services Provided:** Provides oversight of the following departments: Development Services, Library, Parks & Recreation, Planning, and Real Estate and also provides administration of major Municipal facilities and museum.

**Charge-Out Methodology:** Allocation of cost pool is based on estimated time spent on each cost center in the Office of Economic & Community Development and each municipal department that reports to the Office of Economic & Community Development.

**Allocation Factor:**

Month-end automated calculation



# Municipality of Anchorage

## Intragovernmental Charges Methodologies

**Department:** Office of Economic & Community Development  
Miller

**Contact:** Tina

**Fund:** 101000

**Telephone:** 343-6183

**Cost Pool (Cost Center / Name):** 510600 / OECD Data & Analytics

**Services Provided:** Provides management of geographic information systems (GIS) data, information, and the associated analysis and metrics from the Geographic Data & Information Center (GDIC) managed by the Geographic Information Officer.

**Charge-Out Methodology:** Allocation of cost pool is based on current year budget categorized into GIS Licensing based on actual use and Baseline GIS Program based on budgeted employee counts. Department GIS support is currently managed through the GDIC vendor contracts or operational projects with direct department funding.

**Allocation Factor:**  
Month-end automated calculation



## Municipality of Anchorage

### Intragovernmental Charges Methodologies

**Department:** Office of Economic & Community Development  
Miller

**Contact:** Tina

**Fund:** 101000

**Telephone:** 343-6183

**Cost Pool (Cost Center / Name):** 510671 / IGC-OECD GIS Licensing

**Services Provided:**

**Charge-Out Methodology:**

**Allocation Factor:**



# Municipality of Anchorage

## Intragovernmental Charges Methodologies

**Department:** Office of Economic & Community Development  
Miller

**Contact:** Tina

**Fund:** 101000

**Telephone:** 343-6183

**Cost Pool (Cost Center / Name):** 510672 / IGC-OECD GIS Enterprise Program

**Services Provided:**

**Charge-Out Methodology:**

**Allocation Factor:**



# Municipality of Anchorage

## Intragovernmental Charges Methodologies

**Department:** Office of Economic & Community Development  
Miller

**Contact:** Tina

**Fund:** 101000

**Telephone:** 343-6183

**Cost Pool (Cost Center / Name):** 510673 / IGC-OECD GIS Dept Support

**Services Provided:**

**Charge-Out Methodology:**

**Allocation Factor:**



## Municipality of Anchorage

### Intragovernmental Charges Methodologies

**Department:** Maintenance & Operations

**Contact:** Maury Robinson

**Fund:** 101000

**Telephone:** 343-8191

**Cost Pool (Cost Center / Name):** 710500 / Facility Maintenance

**Services Provided:** Provides municipal facility maintenance services, with scheduling and prioritizing done via work order system and by issue type.

**Charge-Out Methodology:** Allocation of cost pool is based on ratio of prior year cost of each facility cost pool to total prior year cost of all facility cost pools.

**Allocation Factor:**

Month-end automated calculation



## Municipality of Anchorage

### Intragovernmental Charges Methodologies

**Department:** Maintenance & Operations

**Contact:** Maury Robinson

**Fund:** 101000

**Telephone:** 343-8191

**Cost Pool (Cost Center / Name):** 710503 / Facilities Girdwood

**Services Provided:** Provides facility maintenance services for municipal facilities in the Girdwood Service Area. Scheduling and prioritizing done via work order system and by issue type.

**Charge-Out Methodology:** Allocation of cost pool is based on ratio of square footage use by department, to total square footage within this cost pool. Charged to all departments, including central service allocating departments that receive this service.

**Allocation Factor:**

Month-end automated calculation



## Municipality of Anchorage

### Intragovernmental Charges Methodologies

**Department:** Maintenance & Operations

**Contact:** Maury Robinson

**Fund:** 101000

**Telephone:** 343-8191

**Cost Pool (Cost Center / Name):** 710506 / Facilities Eagle River Town Center

**Services Provided:** Provides facility maintenance services for municipal facilities in Eagle River, primarily the Eagle River Town Center located at 12001 Business Boulevard, Eagle River, AK 99577. Scheduling and prioritizing done via work order system and by issue type.

**Charge-Out Methodology:** Allocation of cost pool is based on ratio of square footage use by department, to total square footage within this cost pool. Charged to all departments, including central service allocating departments that receive this service.

**Allocation Factor:**

Month-end automated calculation





## Municipality of Anchorage

### Intragovernmental Charges Methodologies

**Department:** Maintenance & Operations

**Contact:** Maury Robinson

**Fund:** 101000

**Telephone:** 343-8191

**Cost Pool (Cost Center / Name):** 710509 / Facilities Fire Stations

**Services Provided:** Provides facility maintenance services for municipal Fire Stations. Scheduling and prioritizing done via work order system and by issue type.

**Charge-Out Methodology:** Allocation of cost pool is based on ratio of square footage use by department, to total square footage within this cost pool. Charged to all departments, including central service allocating departments that receive this service.

**Allocation Factor:**

Month-end automated calculation



## Municipality of Anchorage

### Intragovernmental Charges Methodologies

**Department:** Maintenance & Operations

**Contact:** Maury Robinson

**Fund:** 101000

**Telephone:** 343-8191

**Cost Pool (Cost Center / Name):** 710512 / Facilities Libraries

**Services Provided:** Provides facility maintenance services for municipal libraries. Scheduling and prioritizing done via work order system and by issue type.

**Charge-Out Methodology:** Allocation of cost pool is based on ratio of square footage use by department, to total square footage within this cost pool. Charged to all departments, including central service allocating departments that receive this service.

**Allocation Factor:**

Month-end automated calculation



## Municipality of Anchorage

### Intragovernmental Charges Methodologies

**Department:** Maintenance & Operations

**Contact:** Maury Robinson

**Fund:** 101000

**Telephone:** 343-8191

**Cost Pool (Cost Center / Name):** 710515 / Facilities Fac Maint Whse

**Services Provided:** Provides facility maintenance services for miscellaneous municipal facilities primarily in the Areawide Service Area. Scheduling and prioritizing done via work order system and by issue type.

**Charge-Out Methodology:** Allocation of cost pool is based on ratio of square footage use by department, to total square footage within this cost pool. Charged to all departments, including central service allocating departments that receive this service.

**Allocation Factor:**

Month-end automated calculation



## Municipality of Anchorage

### Intragovernmental Charges Methodologies

**Department:** Maintenance & Operations

**Contact:** Maury Robinson

**Fund:** 101000

**Telephone:** 343-8191

**Cost Pool (Cost Center / Name):** 710518 / Facilities Traffic

**Services Provided:** Provides facility maintenance services for municipal facilities used by the Traffic Department. Scheduling and prioritizing done via work order system and by issue type.

**Charge-Out Methodology:** Allocation of cost pool is based on ratio of square footage use by department, to total square footage within this cost pool. Charged to all departments, including central service allocating departments that receive this service.

**Allocation Factor:**

Month-end automated calculation



## Municipality of Anchorage

### Intragovernmental Charges Methodologies

**Department:** Maintenance & Operations

**Contact:** Maury Robinson

**Fund:** 101000

**Telephone:** 343-8191

**Cost Pool (Cost Center / Name):** 710521 / Facilities RES/Historical Property

**Services Provided:** Provides facility maintenance services for municipal facilities used by the Real Estate Services (RES) / Historical Properties. Scheduling and prioritizing done via work order system and by issue type.

**Charge-Out Methodology:** Allocation of cost pool is based on ratio of square footage use by department, to total square footage within this cost pool. Charged to all departments, including central service allocating departments that receive this service.

**Allocation Factor:**

Month-end automated calculation



## Municipality of Anchorage

### Intragovernmental Charges Methodologies

**Department:** Maintenance & Operations

**Contact:** Maury Robinson

**Fund:** 101000

**Telephone:** 343-8191

**Cost Pool (Cost Center / Name):** 710524 / Facilities Areawide Parks & Rec

**Services Provided:** Provides facility maintenance services for municipal facilities primarily in the Parks & Recreation Service Area. Scheduling and prioritizing done via work order system and by issue type.

**Charge-Out Methodology:** Allocation of cost pool is based on ratio of square footage use by department, to total square footage within this cost pool. Charged to all departments, including central service allocating departments that receive this service.

**Allocation Factor:**

Month-end automated calculation



## Municipality of Anchorage

### Intragovernmental Charges Methodologies

**Department:** Maintenance & Operations

**Contact:** Maury Robinson

**Fund:** 101000

**Telephone:** 343-8191

**Cost Pool (Cost Center / Name):** 710527 / Facility Maintenance AHD Service

**Services Provided:** Provides facility maintenance services for municipal facilities used by the Anchorage Health Department within. Scheduling and prioritizing done via work order system and by issue type.

**Charge-Out Methodology:** Allocation of cost pool is based on ratio of square footage use by department, to total square footage within this cost pool. Charged to all departments, including central service allocating departments that receive this service.

**Allocation Factor:**

Month-end automated calculation



## Municipality of Anchorage

### Intragovernmental Charges Methodologies

**Department:** Maintenance & Operations

**Contact:** Maury Robinson

**Fund:** 101000

**Telephone:** 343-8191

**Cost Pool (Cost Center / Name):** 710530 / Facilities ARDSA

**Services Provided:** Provides facility maintenance services for municipal facilities within the Anchorage Roads & Drainage Service Area. Scheduling and prioritizing done via work order system and by issue type.

**Charge-Out Methodology:** Allocation of cost pool is based on ratio of square footage use by department, to total square footage within this cost pool. Charged to all departments, including central service allocating departments that receive this service.

**Allocation Factor:**

Month-end automated calculation





## Municipality of Anchorage

### Intragovernmental Charges Methodologies

**Department:** Maintenance & Operations

**Contact:** Maury Robinson

**Fund:** 101000

**Telephone:** 343-8191

**Cost Pool (Cost Center / Name):** 710533 / Facilities Transit/Centers/Park & Rides

**Services Provided:** Provides facility maintenance services for municipal facilities used for Public Transportation, including transit center and Park & Ride. Scheduling and prioritizing done via work order system and by issue type.

**Charge-Out Methodology:** Allocation of cost pool is based on ratio of square footage use by department, to total square footage within this cost pool. Charged to all departments, including central service allocating departments that receive this service.

**Allocation Factor:**

Month-end automated calculation



## Municipality of Anchorage

### Intragovernmental Charges Methodologies

**Department:** Maintenance & Operations

**Contact:** Maury Robinson

**Fund:** 101000

**Telephone:** 343-8191

**Cost Pool (Cost Center / Name):** 710536 / Facilities Fleet Maint

**Services Provided:** Provides facility maintenance services for municipal facilities used by Fleet Maintenance. Scheduling and prioritizing done via work order system and by issue type.

**Charge-Out Methodology:** Allocation of cost pool is based on ratio of square footage use by department, to total square footage within this cost pool. Charged to all departments, including central service allocating departments that receive this service.

**Allocation Factor:**

Month-end automated calculation



## Municipality of Anchorage

### Intragovernmental Charges Methodologies

**Department:** Maintenance & Operations

**Contact:** Maury Robinson

**Fund:** 101000

**Telephone:** 343-8191

**Cost Pool (Cost Center / Name):** 710539 / Facilities Police / Substations

**Services Provided:** Provides facility maintenance services for municipal facilities used primarily by the Police Department, including police substations. Scheduling and prioritizing done via work order system and by issue type.

**Charge-Out Methodology:** Allocation of cost pool is based on ratio of square footage use by department, to total square footage within this cost pool. Charged to all departments, including central service allocating departments that receive this service.

**Allocation Factor:**

Month-end automated calculation



## Municipality of Anchorage

### Intragovernmental Charges Methodologies

**Department:** Maintenance & Operations

**Contact:** Maury Robinson

**Fund:** 101000

**Telephone:** 343-8191

**Cost Pool (Cost Center / Name):** 710542 / Facilities Eagle River Parks & Rec

**Services Provided:** Provides facility maintenance services for municipal facilities used by the Eagle River Parks & Recreation Service Area. Scheduling and prioritizing done via work order system and by issue type.

**Charge-Out Methodology:** Allocation of cost pool is based on ratio of square footage use by department, to total square footage within this cost pool. Charged to all departments, including central service allocating departments that receive this service.

**Allocation Factor:**

Month-end automated calculation



## Municipality of Anchorage

### Intragovernmental Charges Methodologies

**Department:** Maintenance & Operations

**Contact:** Maury Robinson

**Fund:** 101000

**Telephone:** 343-8191

**Cost Pool (Cost Center / Name):** 710545 / Facilities City Hall

**Services Provided:** Provides facility maintenance services for municipal facilities in City Hall located at 632 West Sixth Avenue, Anchorage, AK 99501. Scheduling and prioritizing done via work order system and by issue type.

**Charge-Out Methodology:** Allocation of cost pool is based on ratio of square footage use by department, to total square footage within this cost pool. Charged to all departments, including central service allocating departments that receive this service.

**Allocation Factor:**

Month-end automated calculation



## Municipality of Anchorage

### Intragovernmental Charges Methodologies

**Department:** Maintenance & Operations

**Contact:** Maury Robinson

**Fund:** 101000

**Telephone:** 343-8191

**Cost Pool (Cost Center / Name):** 710548 / Facilities Eagle River Parks & Rec Chal

**Services Provided:** Provides facility maintenance services for the municipal facility Ski Chalet at Beach Lake in the Eagle River Parks & Recreation Service Area. Scheduling and prioritizing done via work order system and by issue type.

**Charge-Out Methodology:** Allocation of cost pool is based on ratio of square footage use by department, to total square footage within this cost pool. Charged to all departments, including central service allocating departments that receive this service.

**Allocation Factor:**

Month-end automated calculation



## Municipality of Anchorage

### Intragovernmental Charges Methodologies

**Department:** Maintenance & Operations

**Contact:** Maury Robinson

**Fund:** 101000

**Telephone:** 343-8191

**Cost Pool (Cost Center / Name):** 710551 / Facilities Eagle River Parks & Rec Pools

**Services Provided:** Provides facility maintenance services for the municipal facility Chugiak High School Pool in the Eagle River Parks & Recreation Service Area. Scheduling and prioritizing done via work order system and by issue type.

**Charge-Out Methodology:** Allocation of cost pool is based on ratio of square footage use by department, to total square footage within this cost pool. Charged to all departments, including central service allocating departments that receive this service.

**Allocation Factor:**

Month-end automated calculation



## Municipality of Anchorage

### Intragovernmental Charges Methodologies

**Department:** Maintenance & Operations

**Contact:** Maury Robinson

**Fund:** 101000

**Telephone:** 343-8191

**Cost Pool (Cost Center / Name):** 710554 / Facilities Areawide Parks & Rec Pools

**Services Provided:** Provides facility maintenance services for municipal pools in the Anchorage Parks & Recreation Service Area. Scheduling and prioritizing done via work order system and by issue type.

**Charge-Out Methodology:** Allocation of cost pool is based on ratio of square footage use by department, to total square footage within this cost pool. Charged to all departments, including central service allocating departments that receive this service.

**Allocation Factor:**

Month-end automated calculation





## Municipality of Anchorage

### Intragovernmental Charges Methodologies

**Department:** Maintenance & Operations

**Contact:** Maury Robinson

**Fund:** 101000

**Telephone:** 343-8191

**Cost Pool (Cost Center / Name):** 710557 / Facilities Heritage Land Bank

**Services Provided:** Provides facility maintenance services for municipal facilities in the Heritage Land Bank Service Area. Scheduling and prioritizing done via work order system and by issue type.

**Charge-Out Methodology:** Allocation of cost pool is based on ratio of square footage use by department, to total square footage within this cost pool. Charged to all departments, including central service allocating departments that receive this service.

**Allocation Factor:**

Month-end automated calculation



## Municipality of Anchorage

### Intragovernmental Charges Methodologies

**Department:** Maintenance & Operations

**Contact:** Maury Robinson

**Fund:** 101000

**Telephone:** 343-8191

**Cost Pool (Cost Center / Name):** 710560 / Facilities Chugiak Fire Service Area

**Services Provided:** Provides facility maintenance services for municipal facilities in the Chugiak Fire Service Area. Scheduling and prioritizing done via work order system and by issue type.

**Charge-Out Methodology:** Allocation of cost pool is based on ratio of square footage use by department, to total square footage within this cost pool. Charged to all departments, including central service allocating departments that receive this service.

**Allocation Factor:**

Month-end automated calculation



## Municipality of Anchorage

### Intragovernmental Charges Methodologies

**Department:** Maintenance & Operations

**Contact:** Maury Robinson

**Fund:** 101000

**Telephone:** 343-8191

**Cost Pool (Cost Center / Name):** 710562 / Facilities-CBERRRSA

**Services Provided:** Provides facility maintenance services for municipal facilities in the Chugiak Birchwood Eagle River Rural Road Service Area (CBERRRSA). Scheduling and prioritizing done via work order system and by issue type.

**Charge-Out Methodology:** Allocation of cost pool is based on ratio of square footage use by department, to total square footage within this cost pool. Charged to all departments, including central service allocating departments that receive this service.

**Allocation Factor:**

Month-end automated calculation



## Municipality of Anchorage

### Intragovernmental Charges Methodologies

**Department:** Maintenance & Operations

**Contact:** Maury Robinson

**Fund:** 101000

**Telephone:** 343-8191

**Cost Pool (Cost Center / Name):** 710563 / Facilities NC HJ Mac Mem Ctr

**Services Provided:** Provides facility maintenance services for the municipal sports facility Harry J. McDonald Memorial Center located at 13701 Harry McDonald Road, Eagle River, AK 99577. Scheduling and prioritizing done via work order system and by issue type. Does not receive allocation from the Facility Maintenance Administration pool.

**Charge-Out Methodology:** Allocation of cost pool is based on ratio of square footage use by department, to total square footage within this cost pool. Charged to all departments, including central service allocating departments that receive this service.

**Allocation Factor:**

Month-end automated calculation



## Municipality of Anchorage

### Intragovernmental Charges Methodologies

**Department:** Maintenance & Operations

**Contact:** Maury Robinson

**Fund:** 101000

**Telephone:** 343-8191

**Cost Pool (Cost Center / Name):** 710566 / Facilities NC Sullivan Arena

**Services Provided:** Provides facility maintenance services for the municipal entertainment facility Sullivan Arena located at 1600 Gambell Street, Anchorage, AK 99501. Scheduling and prioritizing done via work order system and by issue type. Does not receive allocation from the Facility Maintenance Administration pool.

**Charge-Out Methodology:** Allocation of cost pool is based on ratio of square footage use by department, to total square footage within this cost pool. Charged to all departments, including central service allocating departments that receive this service.

**Allocation Factor:**

Month-end automated calculation



## Municipality of Anchorage

### Intragovernmental Charges Methodologies

**Department:** Maintenance & Operations

**Contact:** Maury Robinson

**Fund:** 101000

**Telephone:** 343-8191

**Cost Pool (Cost Center / Name):** 710569 / Facilities NC Egan Center

**Services Provided:** Provides facility maintenance services for the municipal convention facility William A. Egan Civic & Convention Center located at 555 West Fifth Avenue, Anchorage, AK 99501. Scheduling and prioritizing done via work order system and by issue type. Does not receive allocation from the Facility Maintenance Administration pool.

**Charge-Out Methodology:** Allocation of cost pool is based on ratio of square footage use by department, to total square footage within this cost pool. Charged to all departments, including central service allocating departments that receive this service.

**Allocation Factor:**

Month-end automated calculation



## Municipality of Anchorage

### Intragovernmental Charges Methodologies

**Department:** Maintenance & Operations

**Contact:** Maury Robinson

**Fund:** 101000

**Telephone:** 343-8191

**Cost Pool (Cost Center / Name):** 710572 / Facilities NC Dena'ina Center

**Services Provided:** Provides facility maintenance services for the municipal convention facility Dena'ina Civic & Convention Center located at 600 West Seventh Avenue, Anchorage, AK 99501. Scheduling and prioritizing done via work order system and by issue type. Does not receive allocation from the Facility Maintenance Administration pool.

**Charge-Out Methodology:** Allocation of cost pool is based on ratio of square footage use by department, to total square footage within this cost pool. Charged to all departments, including central service allocating departments that receive this service.

**Allocation Factor:**

Month-end automated calculation



## Municipality of Anchorage

### Intragovernmental Charges Methodologies

**Department:** Maintenance & Operations

**Contact:** Maury Robinson

**Fund:** 101000

**Telephone:** 343-8191

**Cost Pool (Cost Center / Name):** 710575 / Facilities NC Performing Arts Center

**Services Provided:** Provides facility maintenance services for the municipal facility Alaska Center for the Performing Arts (PAC) located at 621 West Sixth Avenue, Anchorage, AK 99501. Scheduling and prioritizing done via work order system and by issue type. Does not receive allocation from the Facility Maintenance Administration pool.

**Charge-Out Methodology:** Allocation of cost pool is based on ratio of square footage use by department, to total square footage within this cost pool. Charged to all departments, including central service allocating departments that receive this service.

**Allocation Factor:**

Month-end automated calculation





## Municipality of Anchorage

### Intragovernmental Charges Methodologies

**Department:** Maintenance & Operations

**Contact:** Maury Robinson

**Fund:** 101000

**Telephone:** 343-8191

**Cost Pool (Cost Center / Name):** 710581 / Facilities NC Anchorage Museum

**Services Provided:** Provides facility maintenance services for the municipal Anchorage Museum located at 625 C Street, Anchorage, AK 99501. Scheduling and prioritizing done via work order system and by issue type. Does not receive allocation from the Facility Maintenance Administration pool.

**Charge-Out Methodology:** Allocation of cost pool is based on ratio of square footage use by department, to total square footage within this cost pool. Charged to all departments, including central service allocating departments that receive this service.

**Allocation Factor:**

Month-end automated calculation



## Municipality of Anchorage

### Intragovernmental Charges Methodologies

**Department:** Maintenance & Operations

**Contact:** Maury Robinson

**Fund:** 101000

**Telephone:** 343-8191

**Cost Pool (Cost Center / Name):** 710583 / Facilities Permit Center

**Services Provided:** Provides facility maintenance services for municipal facilities in the Anchorage Permit & Development Center located at 4700 Elmore Road, Anchorage, AK 99507. Scheduling and prioritizing done via work order system and by issue type.

**Charge-Out Methodology:** Allocation of cost pool is based on ratio of square footage use by department, to total square footage within this cost pool. Charged to all departments, including central service allocating departments that receive this service.

**Allocation Factor:**

Month-end automated calculation



## Municipality of Anchorage

### Intragovernmental Charges Methodologies

**Department:** Maintenance & Operations

**Contact:** Maury Robinson

**Fund:** 101000

**Telephone:** 343-8191

**Cost Pool (Cost Center / Name):** 710800 / Facility Capital Improvements

**Services Provided:** Provides project management, design, and construction services for municipal general government facility upgrades, improvements, and new construction.

**Charge-Out Methodology:** Allocation of cost pool is based on ratio of square footage for the department to total facility square footage municipality wide.

**Allocation Factor:**

Month-end automated calculation