



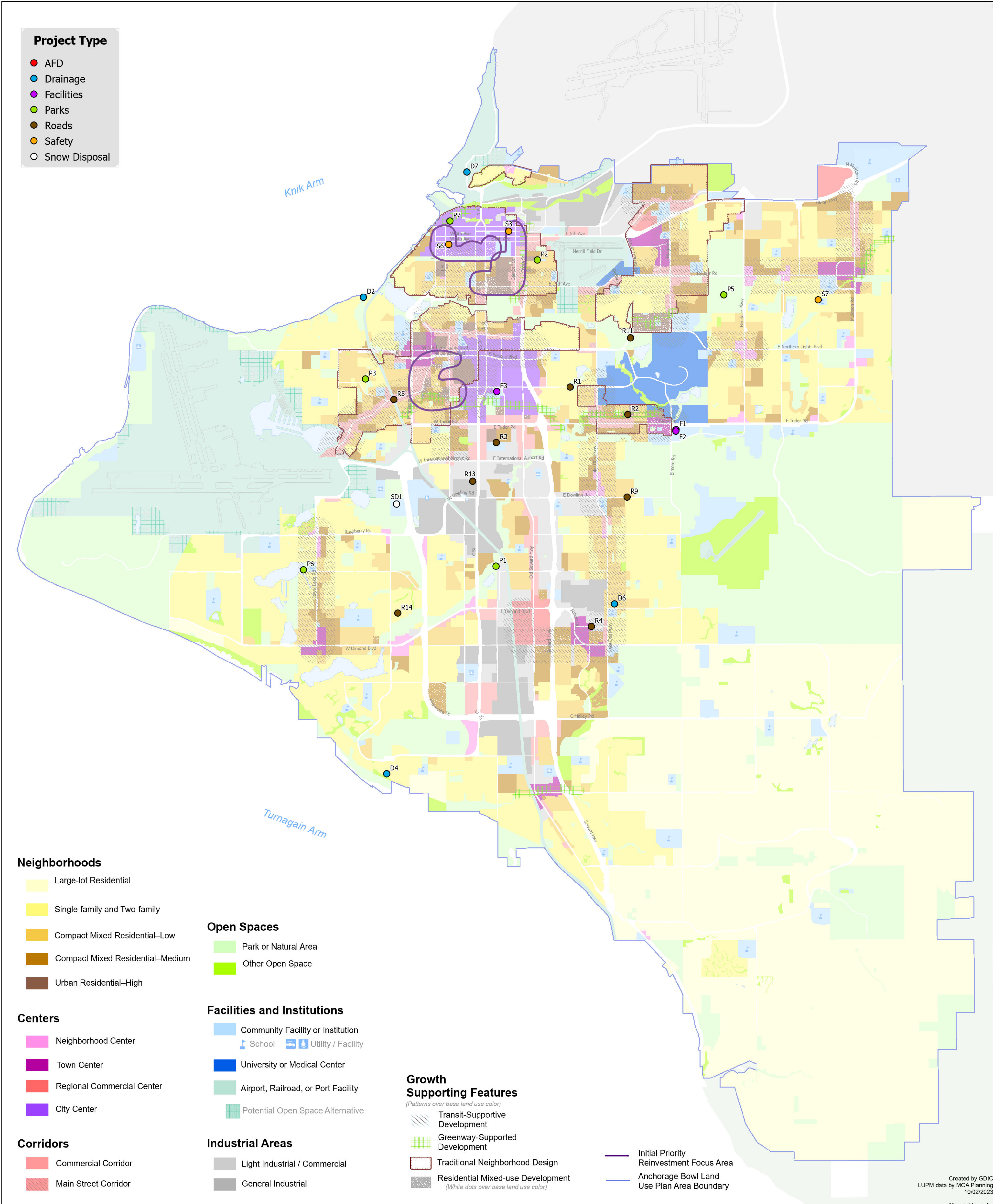
MOA Proposed 2024 Bond Projects

(October 2023)

Map Key	Fire Projects
AFD1*	Fire Ambulance Replacement
Map Key	Facilities Projects
F1	APD Elmore Station Heating Delivery System Renovation
F2	APD Elmore Station Roof Reconstruction
F3	Loussac Library Alaska Room Window Repairs/Replacements
Map Key	Fleet Replacement
FR1*	APD/General Government Fleet Vehicle Replacement
Map Key	Safety Projects
S1*	ADA Improvements
S2*	Alaska Railroad Crossing Rehabs
S3	AMATS: 4th Ave Signals and Lighting - Cordova St to Ingra St
S4*	ARDSA Sound Barrier/Retaining Wall Replacement
S5*	ARDSA Street Light Improvements
S6	Downtown Lighting and Signals Upgrades
S7	Patterson St Improvements - DeBarr Rd to Chester Creek
S8*	Pedestrian Safety and Rehab Annual Program
S9*	School Zone Safety
Map Key	Drainage Projects
D1*	ARDSA Storm Drainage Deficiencies
D2	Fish Creek Improvements Phase V - Cook Inlet to Lake Otis Pkwy
D3*	Flooding, Glaciation, and Drainage Annual Program
D4	Leary Bay Cir Drainage Improvements
D5*	Low Impact Development Annual Program
D6	Pokey Cir Area Drainage Improvements
D7	West Bluff Dr/Ocean Dock Rd Area Storm Drain
Map Key	Snow Disposal
SD1	Snow Disposal Site - West Anchorage

Map Key	Parks Projects
P1	Campbell Creek Trail Rehabilitation and Way Finding
P2	Fairview Recreation Center Improvements
P3	Fish Creek Trail to the Ocean
P4*	Playground Development - All Inclusive
P5	Russian Jack Springs Park Safety and ADA Improvements
P6	Sand Lake Dock
P7	Tony Knowles Coastal Trail to Ship Creek Trail Connection
Map Key	Roads Projects
R1	36th Ave Resurfacing Phase II - Latouche St to Lake Otis
R2	42nd Ave Upgrade - Lake Otis Pkwy to Florina St
R3	48th Ave Reconstruction Old Seward Hwy to International Airport Rd
R4	AMATS: 88th Ave Surface Rehab - Abbott Rd to Lake Otis Pkwy
R5	AMATS: Spenard Rd Rehabilitation - Northwood Dr to Minnesota Dr
R6*	Anchorage Signal System, Signage, and Safety Improvements
R7*	ARDSA Alley Paving
R8*	ARDSA Road and Drainage Rehabilitation Annual Program
R9	Dowling Rd Surface Rehab - Lake Otis Pkwy to Elmore Rd
R10*	Intersection Resurfacing
R11	Northern Lights Blvd Surface Rehab - Lake Otis Pkwy to Bragaw St
R12*	Pavement and Subbase Rehabilitation
R13	Silverado Way Rd and Drainage Improvements
R14	Tasha Dr Reconstruction
R15*	Traffic Calming and Safety Improvements
Map Key	Transit Projects
Tr1*	Transit Facilities, Centers, and Bus Stop Improvements
Tr2*	Transit Fleet/Support Equipment/Support Vehicle Replacement & Expansion

* Not shown on map



- Project Type**
- AFD
 - Drainage
 - Facilities
 - Parks
 - Roads
 - Safety
 - Snow Disposal

- Neighborhoods**
- Large-lot Residential
 - Single-family and Two-family
 - Compact Mixed Residential-Low
 - Compact Mixed Residential-Medium
 - Urban Residential-High

- Open Spaces**
- Park or Natural Area
 - Other Open Space

- Centers**
- Neighborhood Center
 - Town Center
 - Regional Commercial Center
 - City Center

- Facilities and Institutions**
- Community Facility or Institution
 - School
 - Utility / Facility
 - University or Medical Center
 - Airport, Railroad, or Port Facility
 - Potential Open Space Alternative

- Corridors**
- Commercial Corridor
 - Main Street Corridor

- Industrial Areas**
- Light Industrial / Commercial
 - General Industrial

- Growth Supporting Features**
(Patterns over base land use color)
- Transit-Supportive Development
 - Greenway-Supported Development
 - Traditional Neighborhood Design
 - Residential Mixed-use Development
(White dots over base land use color)

- Initial Priority Reinvestment Focus Area
- Anchorage Bowl Land Use Plan Area Boundary