

Multi-Level Residential Building

Gravel Driveway

10' Utility Easement

10' Utility Easement

10' Utility Easement

Gabion Rock Wall

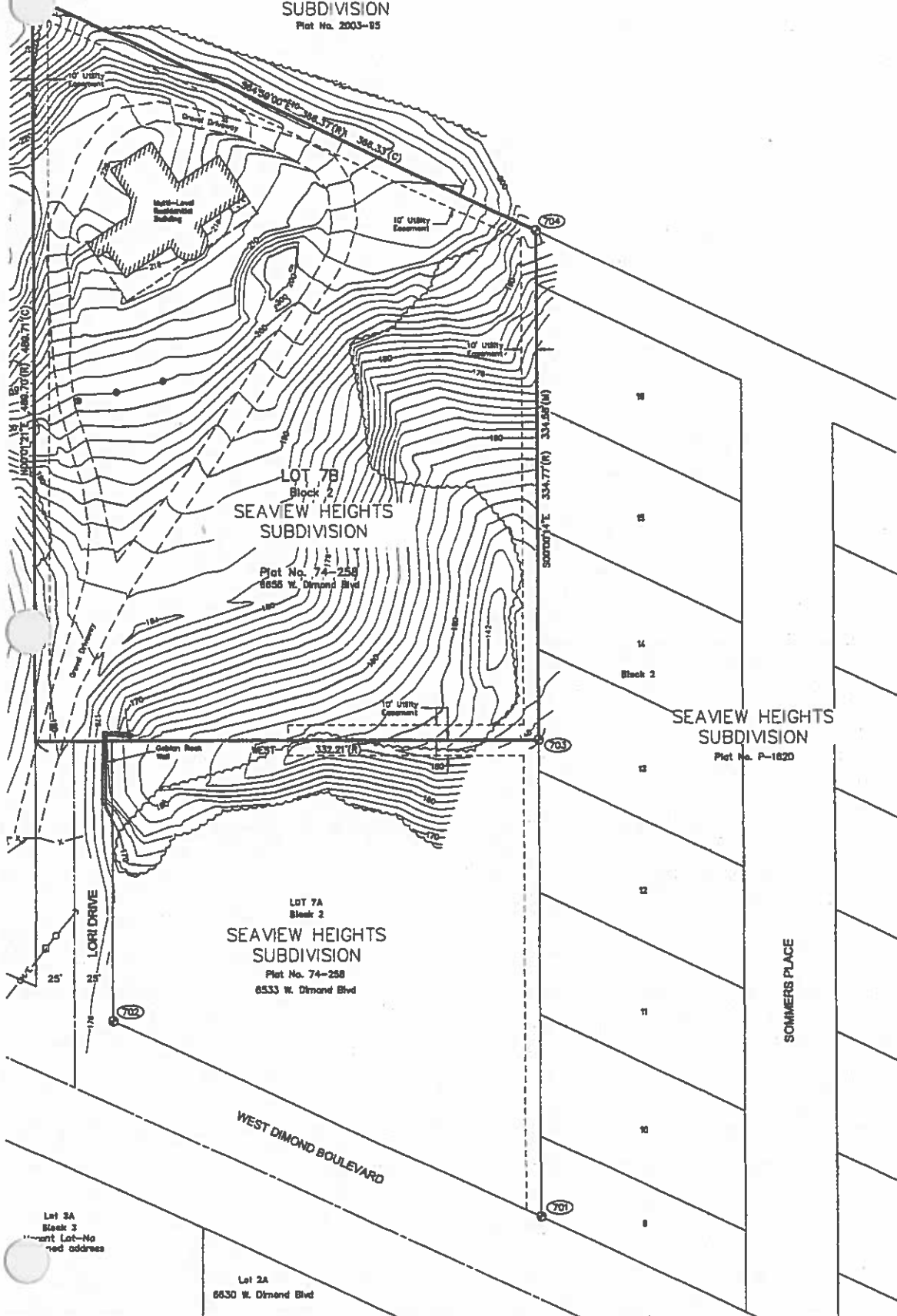
WEST

LOT 7B
Block 2

SEAVIEW HEIGHTS
SUBDIVISION

Plat No. 74-258
6655 W. Diamond Blvd

TRACT 8
KINCAID ESTATES
SUBDIVISION
Plat No. 2003-85



SURVEY CONTROL NOTES

HORIZONTAL CONTROL
Coordinates are based on an assumed datum are based on the Plat of LOT 7A & 7B, BL. SUBDIVISION (Sed on Plat No. 74-258 in th District, Third Judicial District, State of Ala

VERTICAL CONTROL
Elevations are based on the Municipality of Network in U.S. Feet. The Bench of Elevate "GAAS-125" having a value of 119.84 feet. ADJUST.

TBM 3567-05 is the top east side of a 8" mailbox support at 6644 W. Diamond Blvd., 183.48 feet.

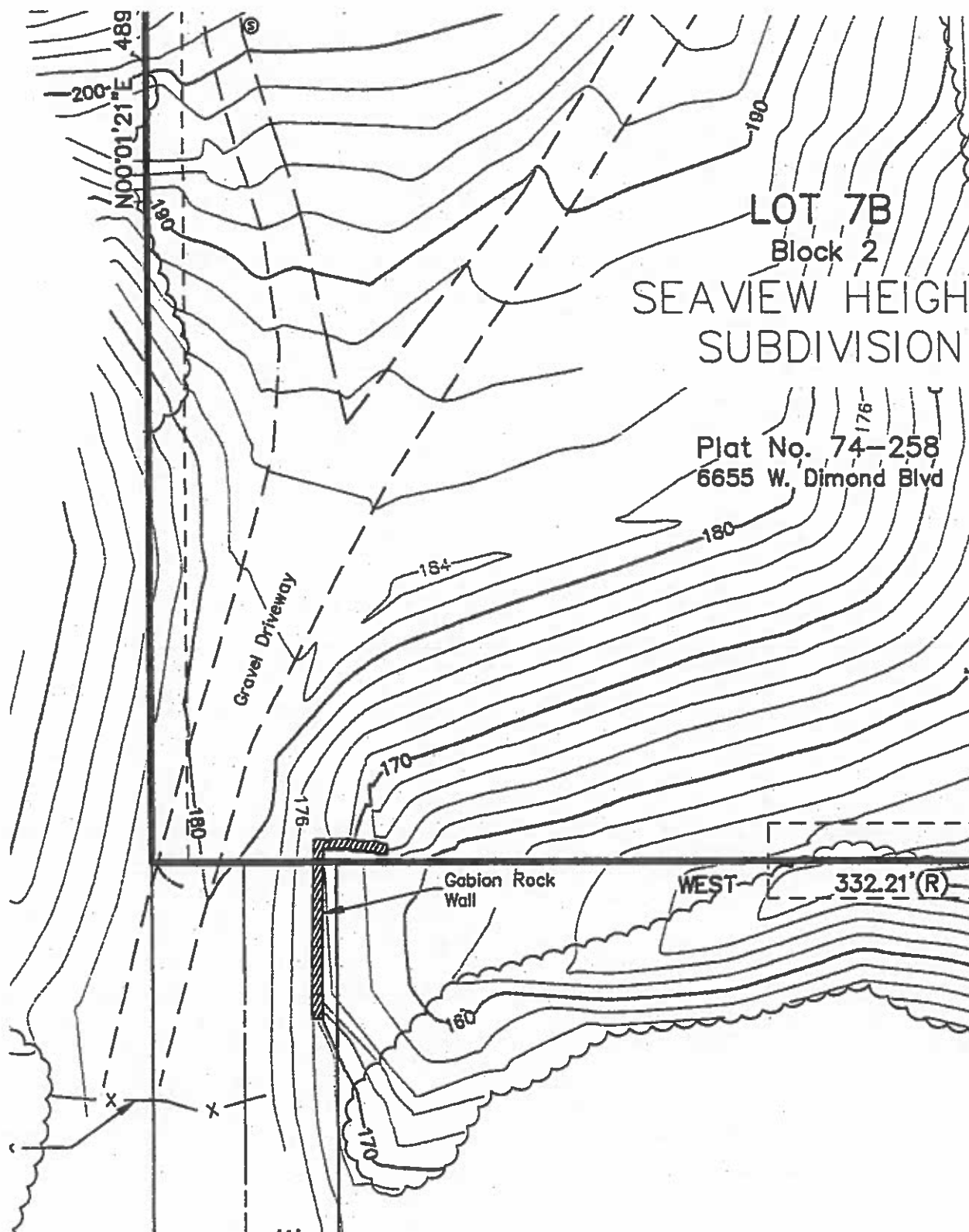
WARNING: Temporary Bench Marks (TBM's) movement. TBM elevations should be verifi construction.

SURVEY CONTROL POINTS

POINT	NORTHING	EASTING	EL
701	8351.39	20000.1179	
702	8481.34	18717.9259	17.
703	8885.42	20000.0227	
704	10000.00	20000.0000	

LEGEND

⊙	SURVEY MONUMENT
(R)	RECORD PER PLAT I
(M)	MEASURED
(C)	COMPUTED
⊙	CONTROL POINT NUM
⊙	POWER POLE
⊙	GLY ANCHOR
⊙	JBOX
⊙	STAND PIPE
— 110 —	MAJOR CONTOUR(10
— 102 —	MINOR CONTOUR(2)
— — —	EDGE OF GRAVEL
— — —	EDGE OF VEGETATIC
— — —	FENCE
— — —	CONCRETE
— — —	BUILDING OUTLINE
— — —	BUILDING OVERHANG
— — —	ROCK WALL
— — —	OVERHEAD ELECTRIC
— — —	PROPERTY BOUNDAR
— — —	ADJACENT PROPERTY
— — —	EASEMENT
— — —	ROAD CENTERLINE



GRAPHIC SCALE



CONTROL NOTES

CONTROL
are based on an assumed datum in U.S. Feet. Bearings
the Plat of LOT 7A & 7B, BLOCK 2, SEAVIEW HEIGHTS
filed as Plat No. 74-258 in the Anchorage Recording
Judicial District, State of Alaska.

CONTROL
are based on the Municipality of Anchorage Vertical Control
in U.S. Feet. The Basis of Elevations is benchmark
having a value of 119.84 feet. The Datum is NGS 1972

5 is the top east side of a 5" Dia. steel casing for the
port at 6644 W. Dimond Blvd., having an elevation of

Temporary Bench Marks (TBM's) may be subject to seasonal
TBM elevations should be verified before using for

CONTROL POINTS

POINT	EASTING	ELEVATION	DESCRIPTION
51.39	20000.1179		IRON PIPE
81.34	19717.9259	174.31	REBAR
85.42	20000.0227		BRASS CAP
000.00	20000.0000		BRASS CAP

SURVEY MONUMENT

RECORD PER PLAT NO. 74-258

MEASURED

COMPUTED

CONTROL POINT NUMBER

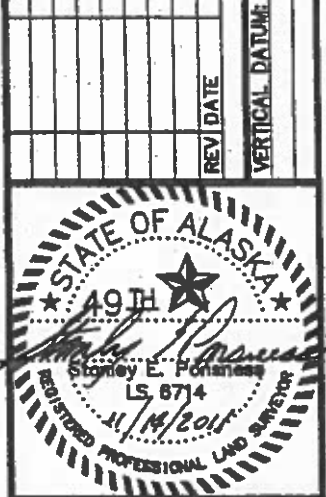
POWER POLE

GUY ANCHOR

JBOX

STAND PIPE

MAJOR CONTOUR(10)



DOWL HKM
4041 "B" STREET, ANCHORAGE, ALASKA 99503
PHONE (907) 582-2000 FAX (907) 583-3953

TOGRAPHY
B, BLOCK 2
IGHTS SUBDIVISION
HEIGHTS SUBDIVISION, PLAT NO. 74-258

S Isabelle

From: D. Isabelle <iceboss@gci.net>
Sent: Monday, October 28, 2013 9:12 AM
To: iceslave@gci.net
Subject: Fw: Seaview Subdivision
Attachments: SBM-SEAVIEW_Signed.PDF

----- Original Message -----

From: Walsh, Sharen A.
To: 'iceboss@gci.net'
Cc: Weaver Jr., Jerry T.
Sent: Tuesday, May 14, 2013 1:47 PM
Subject: FW: Seaview Subdivision

Mr. Isabelle,
I met with the municipal surveyor today. He explained that the map we were working from last week was incorrect. Please see corrected survey drawing below. Note the date on the surveyor's seal of 11/14/2011. This is a correction from the previous map, dated 10/19/2011.

I apologize that the incorrect map was mistakenly distributed at our meeting last week.

Sharen Walsh

Sharen A. Walsh, P.E.
Deputy Director & Building Official
Development Services Division
Community Development Department
Municipality of Anchorage
(907) 343-8025

From: Schmitt, Steve G.
Sent: Tuesday, May 14, 2013 1:23 PM
To: Walsh, Sharen A.
Subject: Seaview Subdivision

Corrected survey map.....

Steven G. Schmitt, PLS, SRWA
Municipal Surveyor
Public Works, PM&E, ROW-Survey
4700 Elmore Road, Anchorage, AK 99507
907-343-8366 (phone) 907-249-7924 (fax)
schmittsg@muni.org