



via E-mail: schmittsg@muni.org

RECEIVED

SEP 15 2011

**Development Services
Municipality of Anchorage**

Dear Mr. Schmitt:

In formulating our proposal, I have made the following assumptions:

1. You will provide legal access onto the property and, if possible, a key to the gate blocking the driveway.
2. We will conduct a thorough search for lot corners to define the property boundary.
3. We will do the work with a combination of conventional survey methods and RTK GPS techniques to meet Municipal survey standards.
4. We will do the work on the basis of time and materials actually expended, with estimated fees being \$11,460 for 1-foot contour mapping or \$9,550 for 2-foot contour mapping as shown on the attached spreadsheet.
5. We will deliver the completed survey within three weeks after receipt of a Notice to Proceed.

The assumptions above are reflected in the attached spreadsheet and estimate for professional services. I will be out of the office beginning Friday, September 16 through Tuesday, September 20. In my absence, please coordinate the work with Veronica Bojko of my office. Please call me if you have any questions.

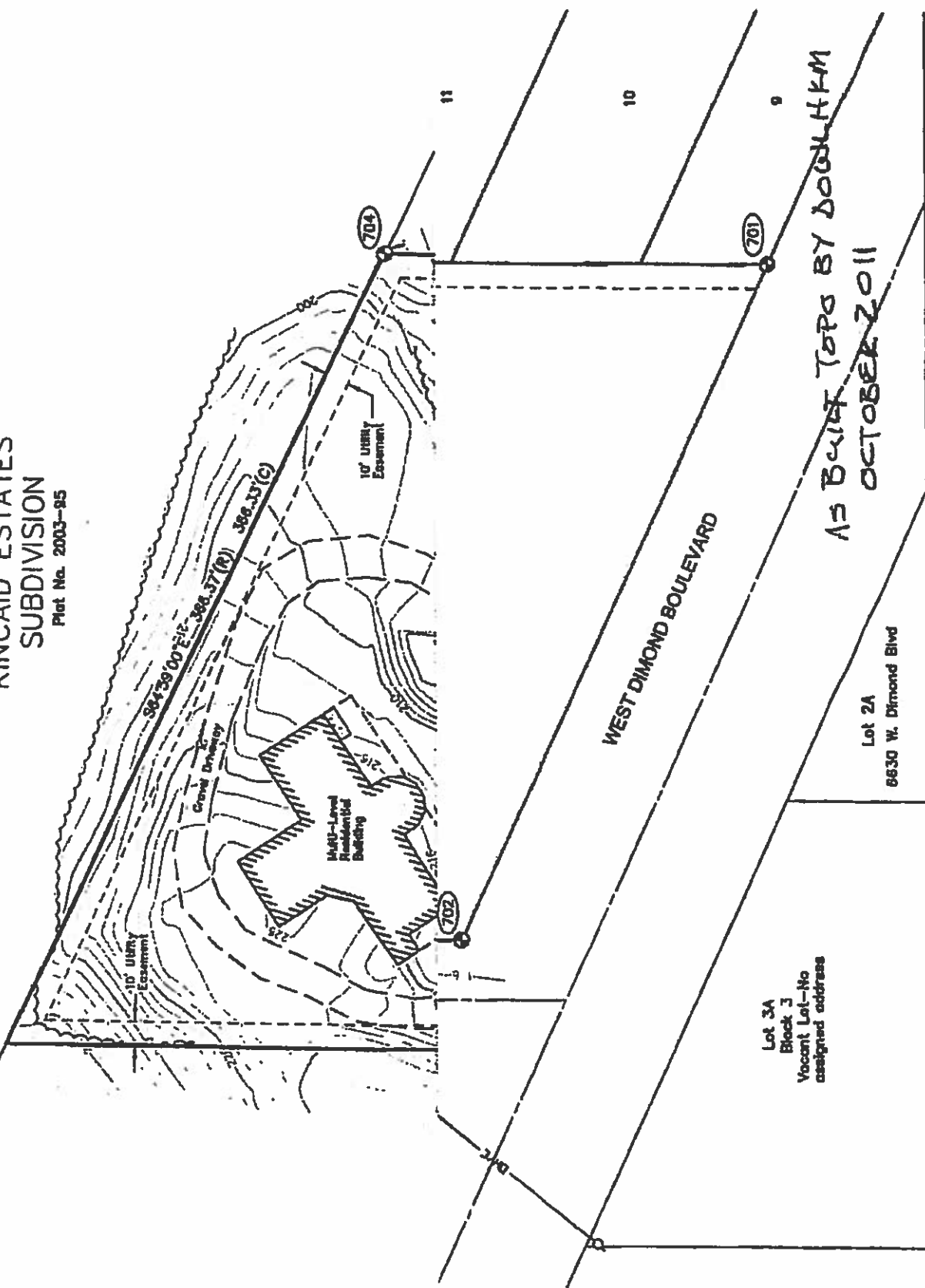
Sincerely,
DOWL HKM

Stanley E. Ponsness, PLS, CFedS
Manager, Land Survey and Geotechnical Engineering

Attachments: Estimate of Professional Services

1967 SEP 09 SEP 09 1967

TRACT 9
KINCAID ESTATES
SUBDIVISION
Plot No. 2003-95



AS BUILT TOPS BY DOUGL H&M
OCTOBER 2011