

This Attachment 2 provides supplementary information to the Final Report.

## **1. Conformance with Secretary of the Interior Preservation Planning Standards**

**Standard 1.** Phase I of the local historic inventory meets the standard to establish historic contexts by creating an organizational structure that organizes information about historic and cultural resources by geography, category of resources, and other information. The landmark database will enable Anchorage to see its resources and identify relationships and themes.

**Standard 2.** Phase I of the local historic inventory meets Standard 2 because it provides the informational basis for being able to identify, evaluate, and rehabilitate historic and cultural resources. It is a foundation for historic preservation planning by informing the HPC, public officials, and members of the public about what we are protecting.

**Standard 3.** Phase I of the local historic inventory meets the standard to make available information about historic resources to the public. It's very purpose is to make different kinds of historic data more accessible to the public and decision makers in municipal projects and planning activities. Because the inventory is a geodatabase (GIS), it will integrate easily into other information that the Municipality is using, and the public will be able to access it through a map app.

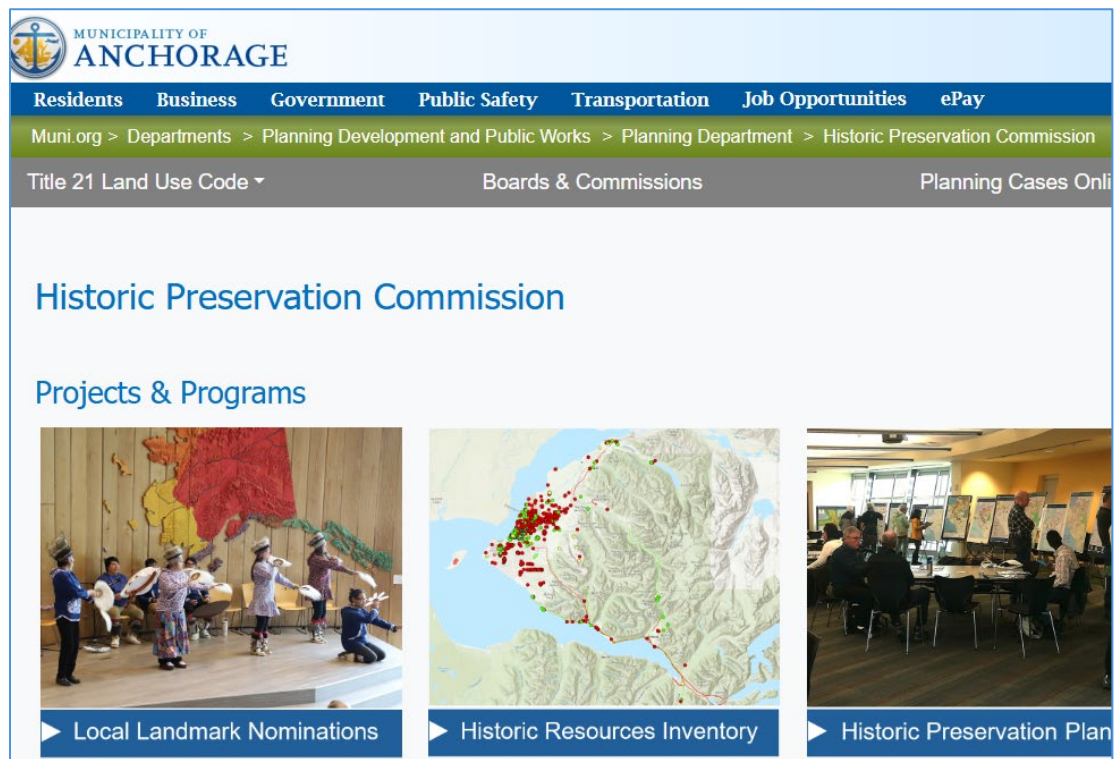
## **2. Confirmation of Public Engagement during Phase I**

The project team met with partners and stakeholders regarding the Phase I database design on the following dates. Further public engagement will occur as we clean up the database and develop and beta test the map app.

- State of Alaska Office of History and Archeology (Maria Lewis, Jeff Weinberger):  
2-18-2025
- Alaska Prospectors Club (General public information)  
3-4-2025
- Native Village of Eklutna (Aaron Leggett)  
6-27-2025
- Joint Base Elmendorf-Richardson (Liz Ortiz, Archeologist)  
6-2025
- Alaska Office of History and Archeology (Maria Lewis, Jeff Weinberger, Patty Relay):  
7-22-2025

Screen shots of public announcements and information regarding the database:

CLG Grant 24008 Local Historic Resources Inventory Database – Phase I:  
Attachment 2



*Above: Image of the MOA's Historic Preservation web page. It contains information about our projects.*



*Above: Displaying our brochure/slides regarding the historic inventory database project at public event. At event booths, staff would discuss the project while encouraging the public to identify their favorite places.*

### **3. Consultations with the Anchorage Historic Preservation Commission (HPC)**

The project team briefed the HPC which deliberated regarding the historic inventory database at the following meetings. The documentation of the discussions is copied from the final meeting minutes approved by the HPC. The full minutes of these meetings are attached separately.

#### **A. January 16, 2025, HPC Meeting Local Historic Inventory Database/Map App Project**

Staff provided an update regarding the ongoing project work. The project team including Michelle Nelson and Commissioner Bryan has been exploring the AHRS data and will be consulting with the stakeholders regarding what AHRS data to include in the local inventory database, and which data should be publicly accessible and which data should not be.

*Commissioner Lamoreaux* emphasized that the archeological sites should remain confidential. It is a goal to eventually develop these sites for public appreciation, but that will be a process.

He explained that, among the stakeholders, Chickaloon Tribe would like to be consulted; Angie Wade is the contact.

#### **B. March 20, 2025, HPC Meeting Staff Reports**

*Michelle Nelson* gave an update on the local historic inventory database. Ms. Nelson and Commissioner Bryan have progressed in their review of the AHRS database and key words in the data to help identify which AHRS sites should not be made public. They will bring the database design back to the Commission for its review after stakeholder interviews and further design work.

#### **C. April 17, 2025, HPC Meeting Staff Reports**

*Michelle Nelson* and *Commissioner Bryan* gave an update regarding item 1.a., the Historic Resources Inventory Database project. The team is developing the database design that will merge inventory information from the Alaska Historic Resource Survey (AHRS) and 2012 municipal databases. The next step is to develop a template of what the merged database would look like and some example sites, to present to the Commission for its feedback, potentially in May. The team has been reaching out to stakeholders and identifying sites of cultural significance to make sure sensitive resources do not appear on the public-facing side of the database or map.

**D. July 17, 2025, HPC Meeting:  
Local Historic Resources Inventory Database Design**

*Michelle Nelson* presented the objectives, status, data sources, and draft database design of the local historic resources inventory under development, for the Commission's discussion and feedback. She displayed the information in a slide presentation, and shared screen views of the database tables. *Ms. Nelson* explained that the phase 1 database design and cleanup product is in progress and due at the end of August. She touched on phase 2 interactive map creation, to begin this fall. She explained how the project has identified types of archeological sites that should be withheld from being displayed on the public-facing database and map app.

*Ms. Nelson* took questions from Commissioners. *Chair Scher* suggested adding "Spirit House" to the list of key terms for flagging sites that potentially should be withheld from public display. He also asked if there would be a way for Commissioners and the public to add data or flag incorrect data that they have knowledge about which is different from what is on the map app.

*Ms. Nelson* shared an example of the AHRS report cards for specific historic properties so that Commissioners could see the kinds of source data on AHRS. She encouraged Commissioners to email her with requests for AHRS cards regarding specific sites.

Action Items:

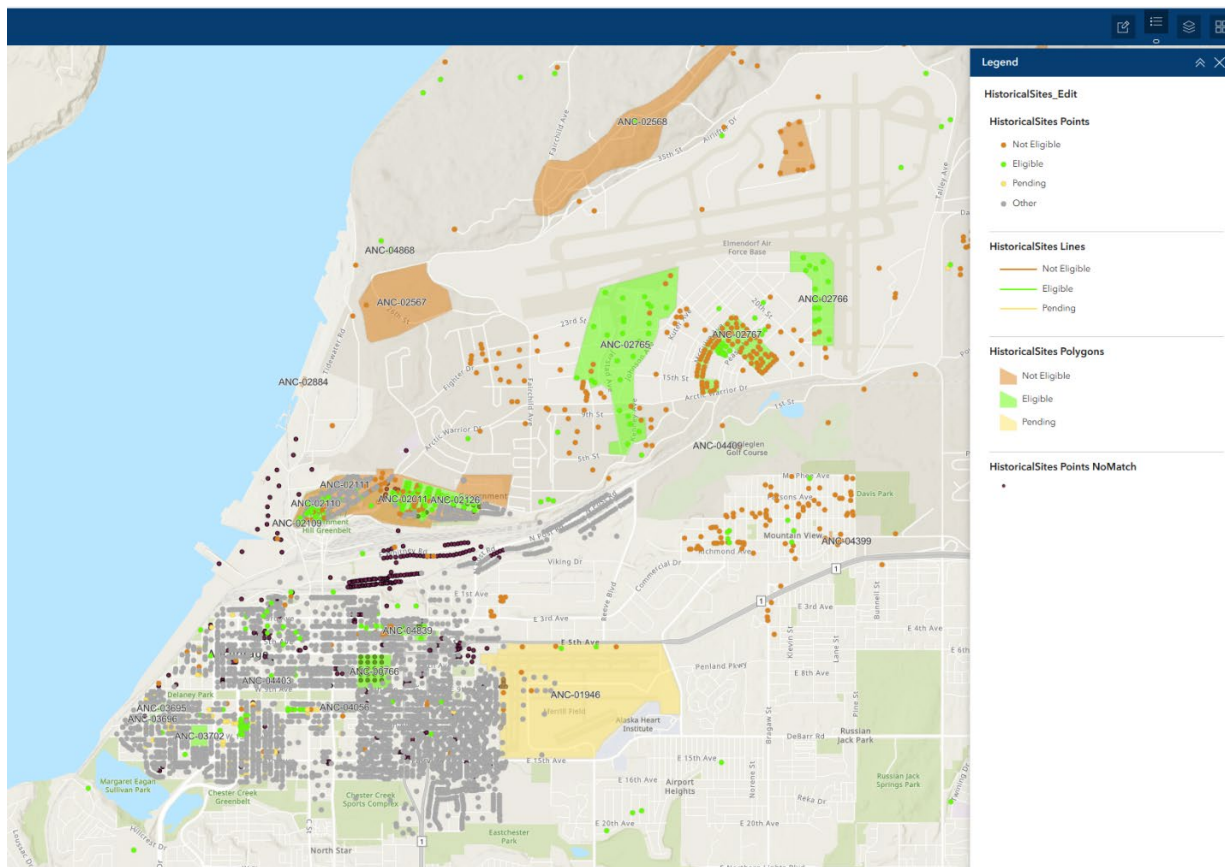
1. Staff to add "Spirit House" to the key terms to use as red flags when determining which sites to withhold from the public-facing map app.
2. Staff to discuss with the GIS contractor in phase 2 of the project how to make it possible for Commissioners and the public to contribute information or flag incorrect information on the map app.

**4. Additional Screen Shots of Phase I Database and Internal Beta Map App**

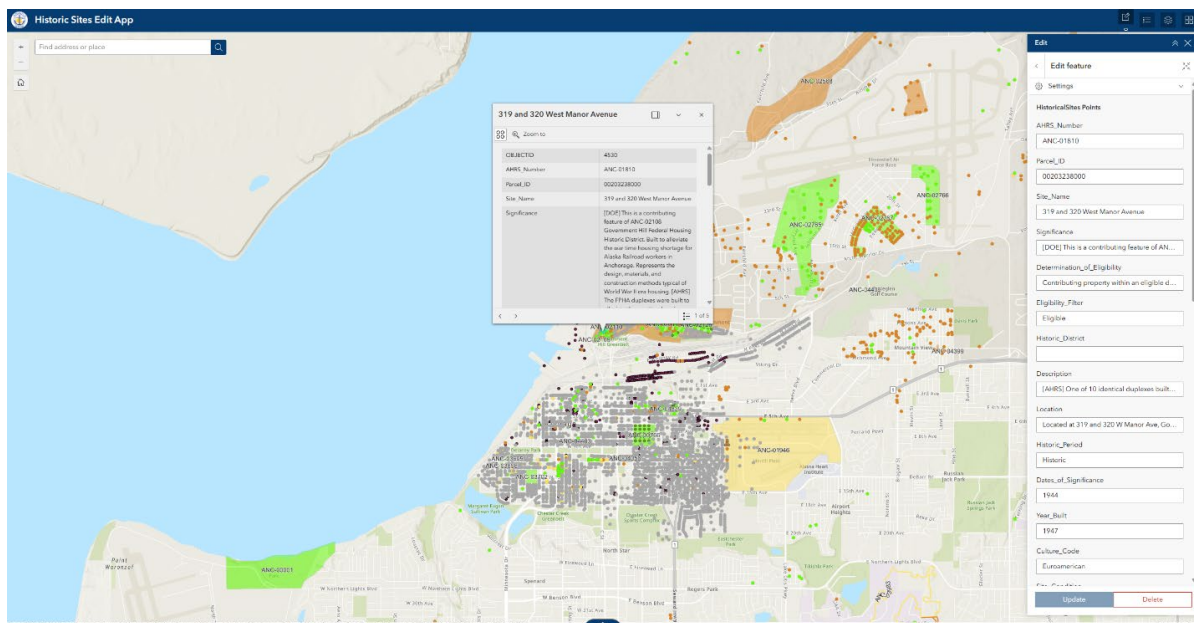
The following screen shots are similar to slides 3 and 11 from the first attachment to the final report. They show how users interact with the Phase I database and internal beta map app. Note that the map app is still under development and is not a Phase I product (it is Phase II). However, it is useful in showing how it provides users with a geographic way to interact with sites on the database. Users click on the points on the map. The second screen shot on the next page shows how information about a site pops up in a dialogue box. That information is pulled from the database, which is a GIS geodatabase linked to the map. The third screen shot shows how the user can pull the geodatabase table into the screen view. The fourth and final screen shot provides an example of the amount of data about a single site (highlighted on the map).



## CLG Grant 24008 Local Historic Resources Inventory Database – Phase I: Attachment 2

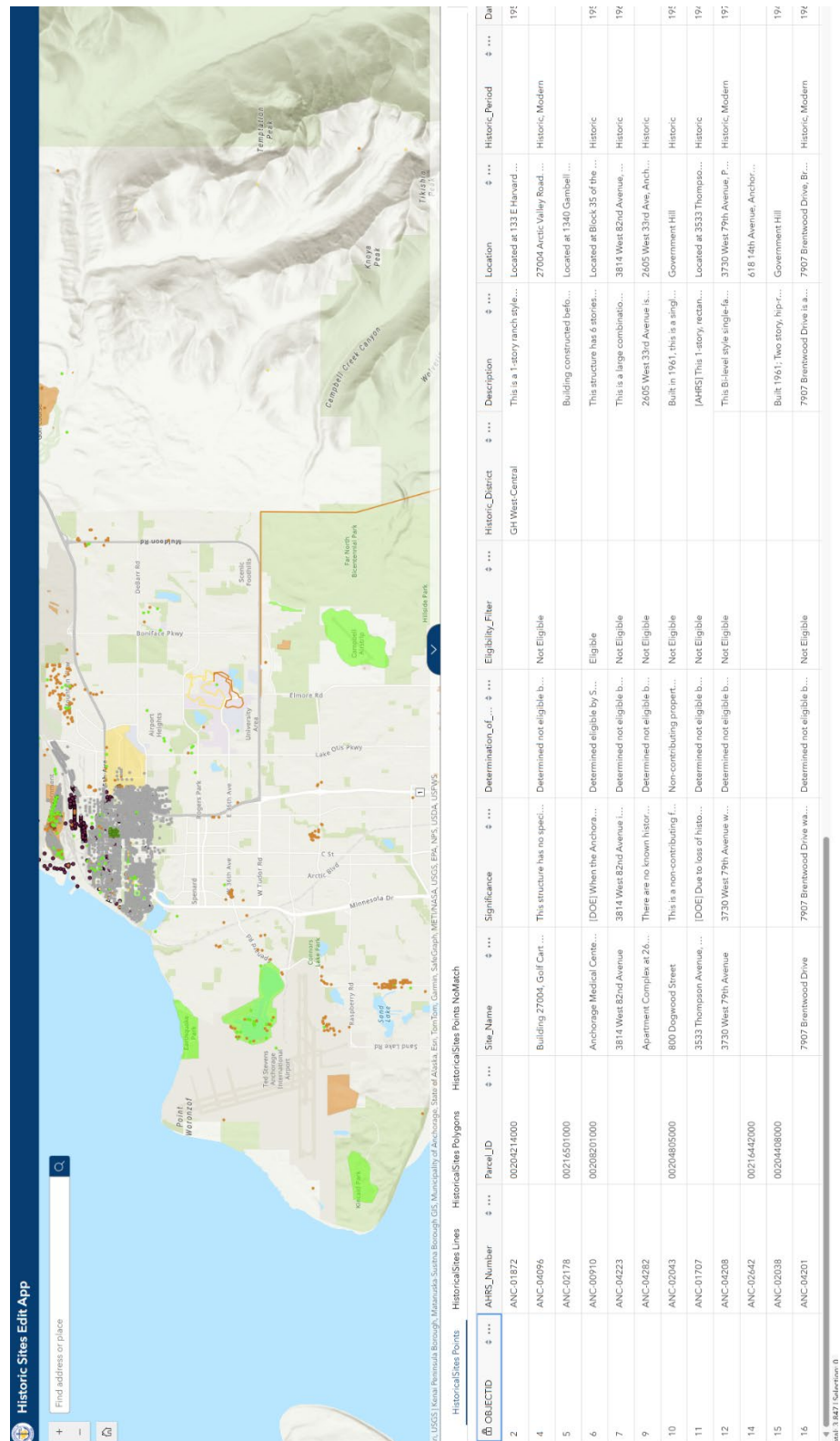


Above: Internal beta map app user interface. Historic resources appear as colored points and polygons. The user clicks on these to access the database information about them.

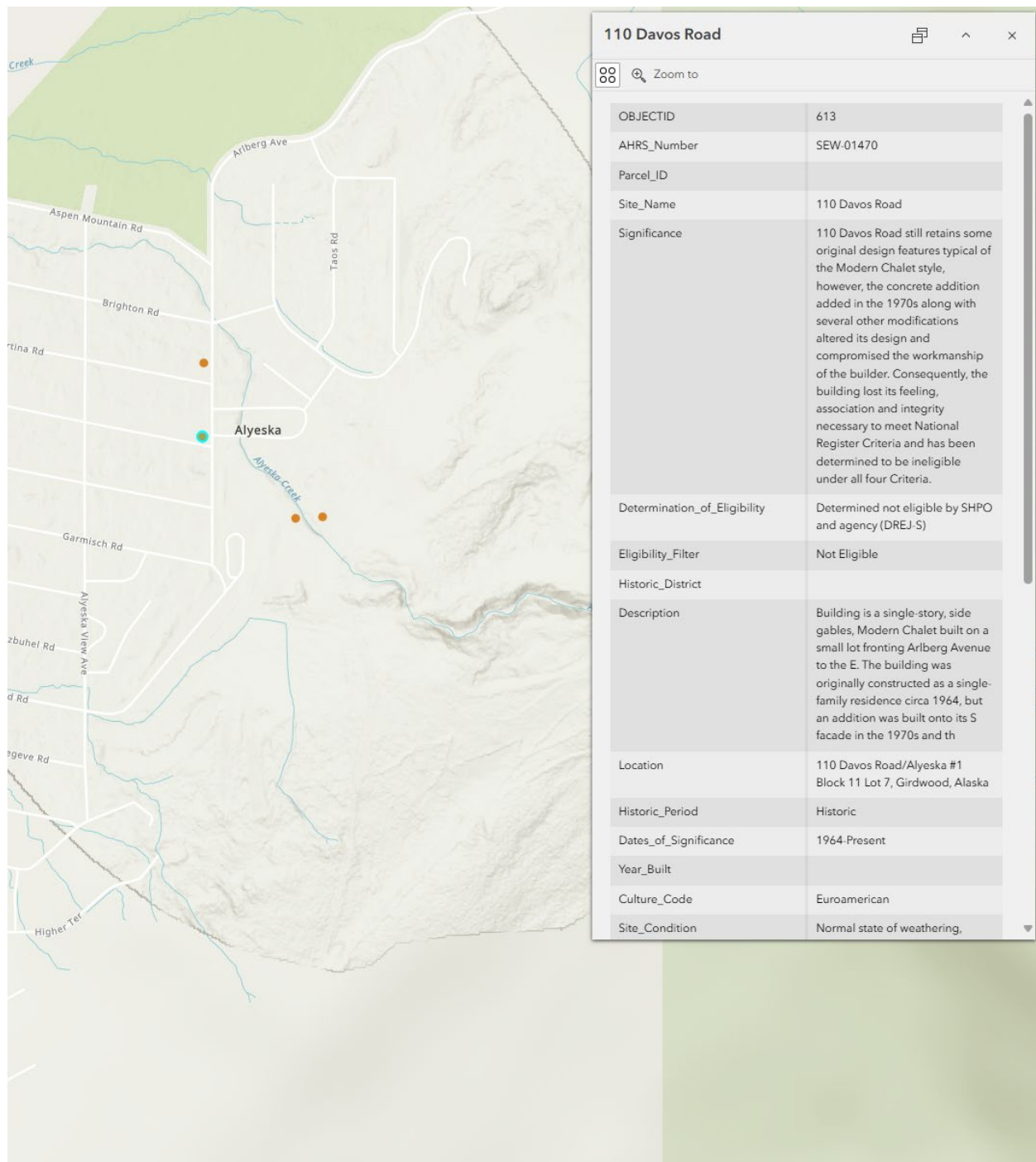


Above: This image shows data windows that display when the user clicks on one of the points or polygons indicating a historic or cultural site. The information is pulled from the inventory database.

*Below: This image shows how the map app also allows the user to pull up the inventory database table. The database is a geodatabase in ArcGIS Pro ESRI software that is georeferenced to the map.*



## CLG Grant 24008 Local Historic Resources Inventory Database – Phase I: Attachment 2



The map shows a topographic view of a mountainous region with several roads and a creek. A blue dot is highlighted on the map, indicating a selected site. The pop-up window titled "110 Davos Road" displays the following information:

Field	Value
OBJECTID	613
AHRS_Number	SEW-01470
Parcel_ID	
Site_Name	110 Davos Road
Significance	110 Davos Road still retains some original design features typical of the Modern Chalet style, however, the concrete addition added in the 1970s along with several other modifications altered its design and compromised the workmanship of the builder. Consequently, the building lost its feeling, association and integrity necessary to meet National Register Criteria and has been determined to be ineligible under all four Criteria.
Determination_of_Eligibility	Determined not eligible by SHPO and agency (DREJ-S)
Eligibility_Filter	Not Eligible
Historic_District	
Description	Building is a single-story, side gables, Modern Chalet built on a small lot fronting Arlberg Avenue to the E. The building was originally constructed as a single-family residence circa 1964, but an addition was built onto its S facade in the 1970s and th
Location	110 Davos Road/Alyeska #1 Block 11 Lot 7, Girdwood, Alaska
Historic_Period	Historic
Dates_of_Significance	1964-Present
Year_Built	
Culture_Code	Euroamerican
Site_Condition	Normal state of weathering,

*Above: The point in blue highlights in the map has been selected by the user. The window of data shown has popped up to display the information about the site. The fields of data in the database provide the different categories of information about that site, including its Significance, DOE, and other information.*