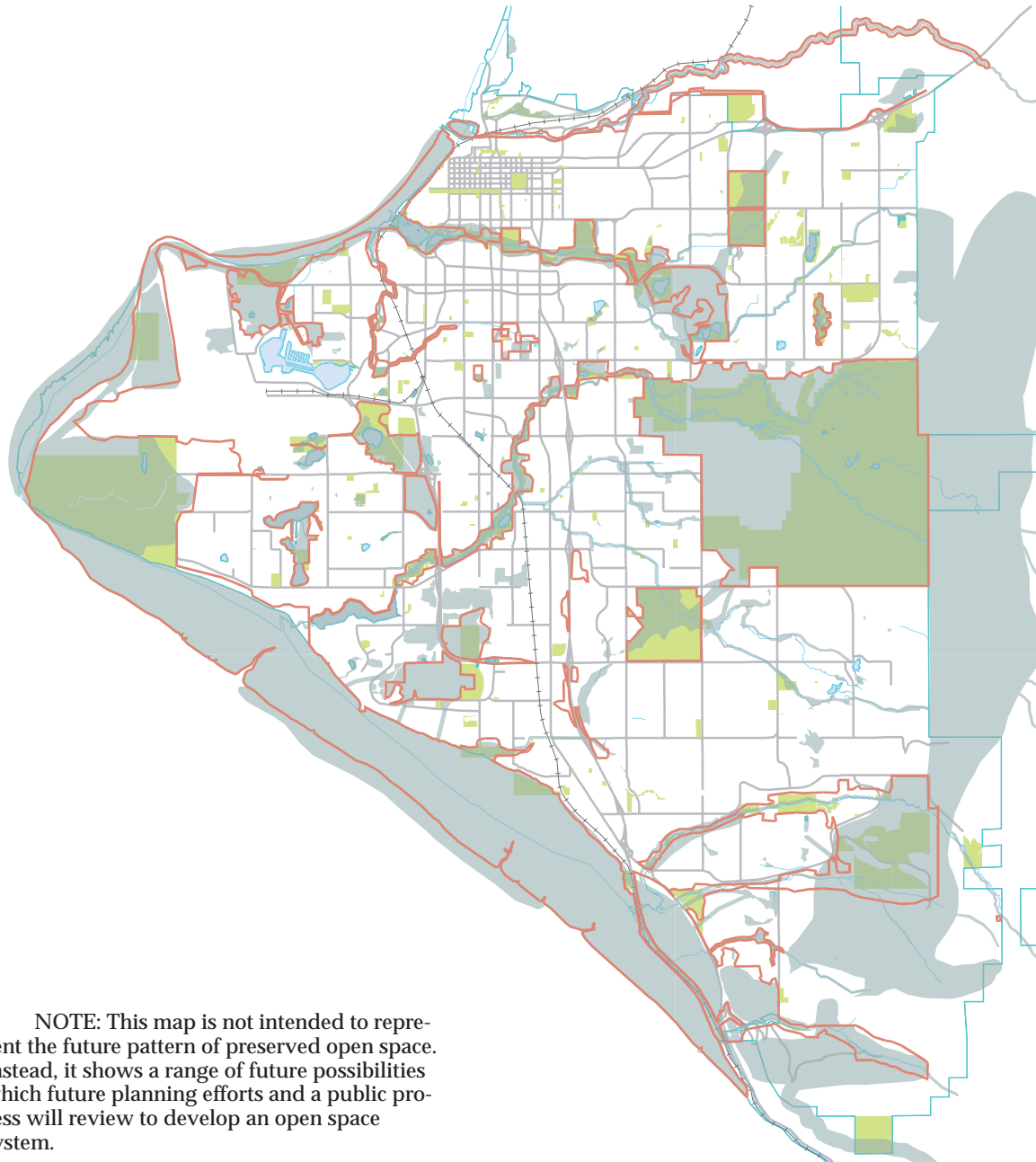


Conceptual Natural Open Space Map



NOTE: This map is not intended to represent the future pattern of preserved open space. Instead, it shows a range of future possibilities which future planning efforts and a public process will review to develop an open space system.

The public, municipal staff, and The Great Land Trust's¹ Open Space and Wildlife Habitat Mapping Project identified over 140 open space sites in the Bowl, including some small parcels that are not shown on the Open Space Map.

¹The Great Land Trust is a non-profit, non-partisan community organization dedicated to conserving lands and waters essential to the quality of life and economic health of communities in Southcentral Alaska.

 **Community Preference for Natural Open Spaces**

Identified by the public as valuable to the community as a whole for a variety of uses. Compiled by The Great Land Trust and the municipal Planning Department from public workshops and nominations from community councils, business associations and community groups.

 **Important Wildlife Habitats**

Habitats necessary to support local populations of selected species. Also, habitats important to regionally rare or declining species, or for species especially sensitive to disturbance. Compiled by The Great Land Trust and the municipal Planning Department from interviews with local wildlife experts and from scientific reports.

 **Existing Municipal Parklands**

Lands dedicated or encumbered for use as parkland.