

Labor Force Transportation Statistics



Table of Contents:

Means of Transportation to Work by Age, Anchorage, 2010	108
Means of Transportation to Work by Age, Mat-Su Borough, 2010	108
% Of Anchorage Workers using Public Transportation as Means to Work by Census Tract, 2010	109
Means of Transportation to Work, by Race & Ethnicity, Anchorage, 2010	110
Means of Transportation to Work, by Earnings, Anchorage, 2010	110
Means of Transportation to Work, by Earnings, Mat-Su Borough, 2010	111
Means of Transportation to Work, by Place of Work, Mat-Su Borough, 2010	111
Travel Time to Work, by Means of Transportation, Anchorage, 2010	112
Travel Time to Work, by Means of Transportation, Mat-Su Borough, 2010	112
% of Labor Force With A 20 Minute or More Commute To Work, by Census Tract, Anchorage, 2010	113
Vehicle Availability for the Labor Force, by Means of Transportation to Work, Anchorage 2010	114
Vehicle Availability for the Labor Force, by Means of Transportation to Work, Mat-Su Borough, 2010	114
% of Labor Force Without Access to a Vehicle, by Census Tract, Anchorage 2010	115

Means of Transportation to Work, by Age, Anchorage 2010

	Means of Transportation to Work			
	Totals/ Percentages	Car, truck, or van: drove alone	Car, truck, or van: carpoled	Public transportation (excluding taxicab)
Total workers 16 years and over	150,953	113,360	21,155	2,004
AGE				
16 to 19 years	3.80%	3.20%	7.30%	8.30%
20 to 24 years	12.30%	10.30%	16.50%	29.30%
25 to 44 years	41.60%	42.30%	41.60%	21.10%
45 to 54 years	23.50%	24.90%	20.10%	28.90%
55 to 59 years	9.40%	10.00%	7.00%	4.10%
60 years and over	9.40%	9.30%	7.50%	8.20%
Median age (years)	41.2	42	39.4	29.8

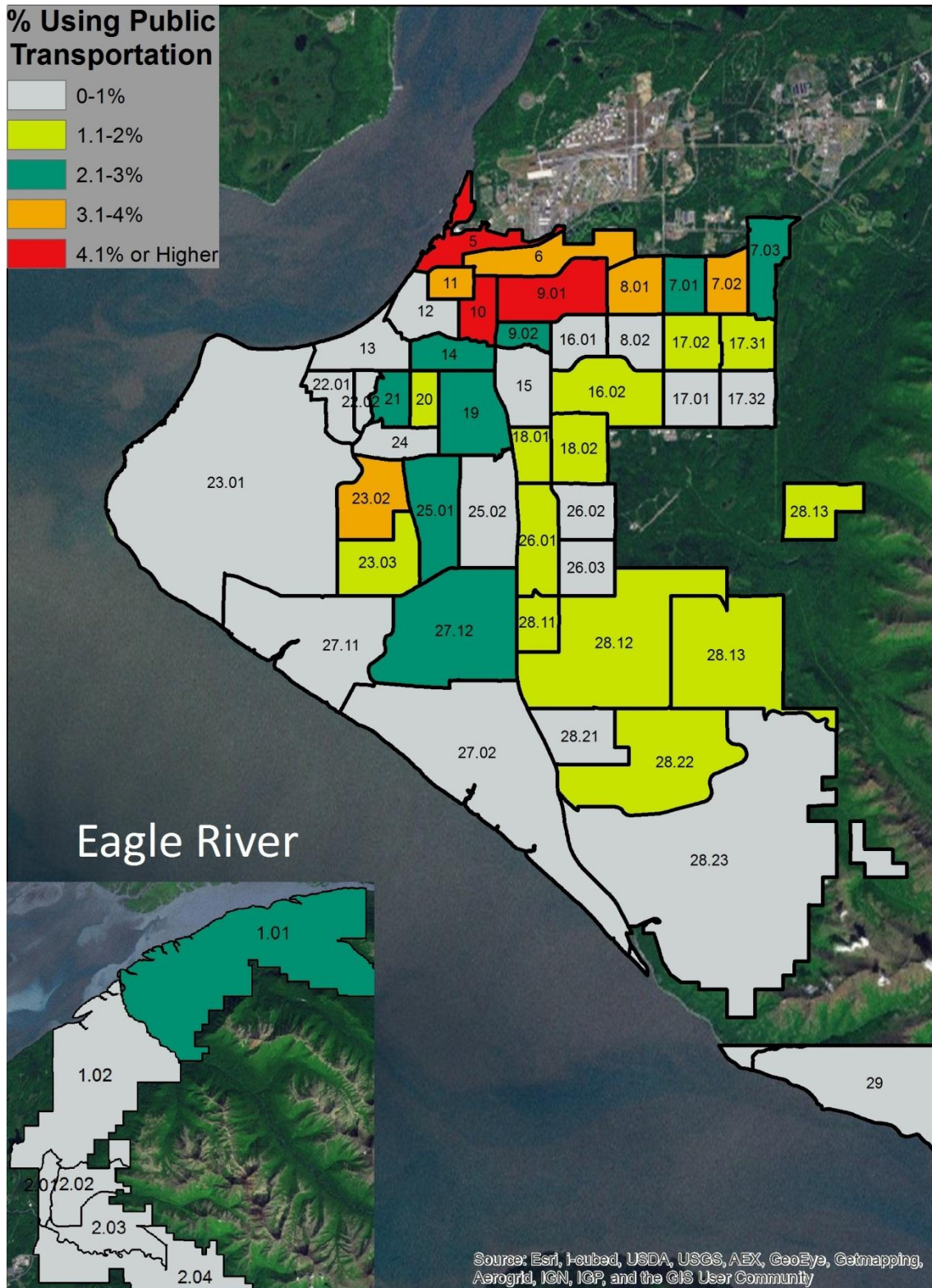
Source: U.S. Census

Means of Transportation to Work, by Age, Mat-Su Borough, 2010

	Means of Transportation to Work			
	Totals/ Percentages	Car, truck, or van: drove alone	Car, truck, or van: carpoled	Public transportation (excluding taxicab)
Total workers 16 years and over	37,880	27,341	5,387	364
AGE				
16 to 19 years	4.30%	3.90%	7.00%	0.00%
20 to 24 years	6.30%	5.80%	7.90%	0.00%
25 to 44 years	44.50%	45.30%	47.30%	48.60%
45 to 54 years	27.70%	27.90%	27.80%	37.60%
55 to 59 years	8.10%	7.30%	4.30%	9.90%
60 years and over	9.20%	9.80%	5.80%	3.80%
Median age (years)	42.9	43.2	40	45.1

Source: U.S. Census

% of Anchorage Workers Using Public Transportation as Means to Work by Census Tract, 2010



Source: U.S. Census

Means of Transportation to Work, by Race & Ethnicity, Anchorage 2010

	Means of Transportation to Work			
	Percentage	Car, truck, or van: drove alone	Car, truck, or van: carpooled	Public transportation (excluding taxicab)
White	73.30%	76.30%	59.10%	49.00%
Black or African American	5.70%	5.90%	5.30%	17.10%
American Indian and Alaska Native	5.00%	4.00%	7.40%	24.70%
Asian	7.40%	6.20%	15.00%	5.60%
Two or more races	5.40%	5.40%	6.30%	3.70%
Hispanic or Latino origin (of any race)	6.50%	5.50%	12.00%	15.50%
White alone, not Hispanic or Latino	69.20%	72.90%	52.20%	33.50%

Source: U.S. Census

Means of Transportation to Work, by Earnings, Anchorage 2010

	Means of Transportation to Work			
	Totals/ Percentages	Car, truck, or van: drove alone	Car, truck, or van: carpooled	Public transportation (excluding taxicab)
Workers 16 years and over with earnings	150,634	113,360	21,155	2,004
\$1 to \$9,999 or loss	9.60%	8.30%	13.20%	33.80%
\$10,000 to \$14,999	7.10%	6.20%	7.60%	10.50%
\$15,000 to \$24,999	12.80%	11.60%	17.70%	21.10%
\$25,000 to \$34,999	12.50%	11.90%	16.80%	4.10%
\$35,000 to \$49,999	16.10%	16.60%	15.00%	22.90%
\$50,000 to \$64,999	14.40%	16.30%	9.70%	0.00%
\$65,000 to \$74,999	6.80%	6.30%	7.30%	3.50%
\$75,000 or more	20.80%	22.90%	12.70%	4.20%
Median earnings	\$41,745	\$45,614	\$30,641	\$16,145

Source: U.S. Census

Means of Transportation to Work, by Earnings, Mat-Su Borough, 2010

	Means of Transportation to Work			
	Totals/ Percentages	Car, truck, or van: drove alone	Car, truck, or van: carpooled	Public transportation (excluding taxicab)
Workers 16 years and over with earnings	37,821	27,341	5,387	364
\$1 to \$9,999 or less	14.00%	12.70%	20.60%	0.00%
\$10,000 to \$14,999	8.50%	9.20%	5.30%	0.00%
\$15,000 to \$24,999	11.00%	10.10%	12.40%	39.80%
\$25,000 to \$34,999	9.70%	10.40%	6.10%	0.00%
\$35,000 to \$49,999	13.40%	13.50%	14.50%	0.00%
\$50,000 to \$64,999	16.90%	17.80%	16.40%	31.30%
\$65,000 to \$74,999	6.20%	6.60%	4.30%	15.10%
\$75,000 or more	20.20%	19.80%	20.40%	13.70%
Median earnings	\$41,637	\$42,203	\$45,080	\$51,128

Source: U.S. Census

Means of Transportation to Work, by Place of Work, Mat-Su Borough, 2010

Place of Work	Means of Transportation to Work			
	Totals/ Percentages	Car, truck, or van: drove alone	Car, truck, or van: carpooled	Public transportation (excluding taxicab)
Worked in county of residence	64.60%	66.90%	50.70%	42.90%
Worked outside county of residence	35.40%	33.10%	49.30%	57.10%
Workers 16 years and over who did not work at home	35,576	27,341	5,387	364

Source: U.S. Census

Travel Time to Work, by Means of Transportation, Anchorage, 2010

Travel Time To Work	Percentage	Means of Transportation to Work		
		Car, truck, or van: drove alone	Car, truck, or van: carpooled	Public transportation (excluding taxicab)
Less than 10 minutes	15.10%	13.90%	17.30%	0.00%
10 to 14 minutes	20.70%	22.40%	13.90%	6.80%
15 to 19 minutes	22.40%	22.90%	26.40%	3.10%
20 to 24 minutes	17.40%	18.30%	18.50%	7.60%
25 to 29 minutes	6.10%	6.80%	4.00%	2.90%
30 to 34 minutes	9.50%	9.30%	8.00%	14.30%
35 to 44 minutes	3.30%	3.00%	5.40%	3.60%
45 to 59 minutes	3.00%	2.30%	3.50%	36.80%
60 or more minutes	2.40%	1.10%	2.80%	24.80%
Mean travel time to work (minutes)	19.3 (For all workers)	17.8	20	43.4

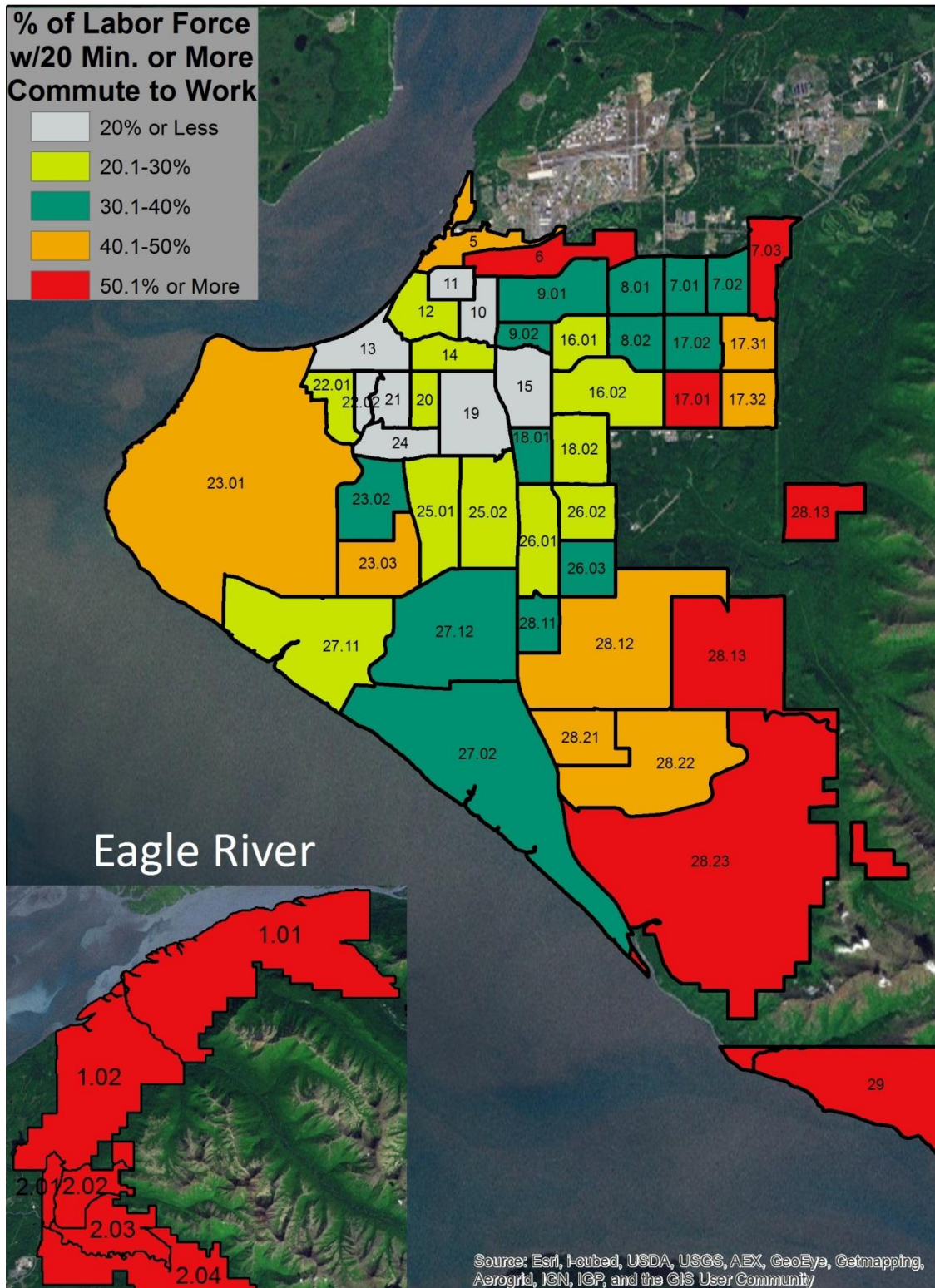
Source: U.S. Census

Travel Time to Work, by Means of Transportation, Mat-Su Borough, 2010

Travel Time To Work	Percentage	Means of Transportation to Work		
		Car, truck, or van: drove alone	Car, truck, or van: carpooled	Public transportation (excluding taxicab)
Less than 10 minutes	15.00%	14.60%	5.60%	0.00%
10 to 14 minutes	13.50%	14.90%	10.70%	3.80%
15 to 19 minutes	16.10%	17.70%	13.40%	0.00%
20 to 24 minutes	7.70%	8.80%	4.30%	15.10%
25 to 29 minutes	3.20%	3.40%	2.10%	27.70%
30 to 34 minutes	8.10%	8.50%	8.40%	0.00%
35 to 44 minutes	3.60%	2.70%	8.80%	22.50%
45 to 59 minutes	13.30%	12.00%	25.70%	0.00%
60 or more minutes	19.40%	17.30%	21.00%	30.80%
Mean travel time to work (minutes)	33 (For all workers)	29.9	35.9	38.4

Source: U.S. Census

% of Labor Force With a 20 Minute or More Commute to Work, by Census Tract, Anchorage, 2010



Source: U.S. Census

Vehicle Availability for the Labor Force, by Means of Transportation to Work, Anchorage 2010

	Means of Transportation to Work			
	Percentage For Total Labor Force	Car, truck, or van: drove alone	Car, truck, or van: carpooled	Public transportation (excluding taxicab)
No vehicle available	3.20%	1.10%	8.40%	20.00%
1 vehicle available	24.40%	21.80%	35.20%	53.50%
2 vehicles available	41.90%	44.50%	29.70%	18.60%
3 or more vehicles available	30.50%	32.60%	26.70%	7.90%

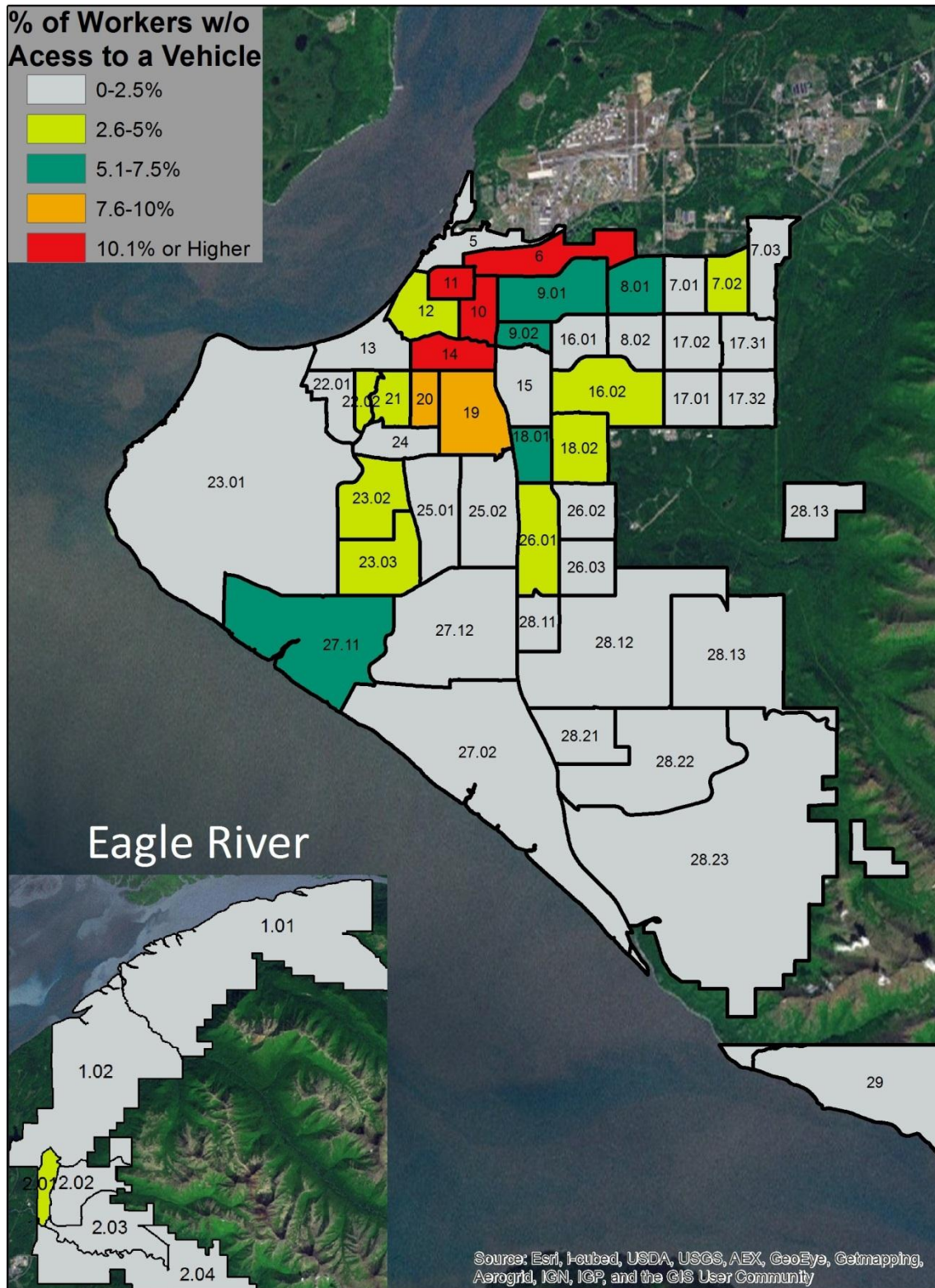
Source: U.S. Census

Vehicle Availability for the Labor Force, by Means of Transportation to Work, Mat-Su Borough 2010

	Means of Transportation to Work			
	Percentage For Total Labor Force	Car, truck, or van: drove alone	Car, truck, or van: carpooled	Public transportation (excluding taxicab)
No vehicle available	1.30%	1.30%	0.00%	0.00%
1 vehicle available	14.70%	13.90%	13.90%	12.10%
2 vehicles available	40.10%	42.00%	32.70%	25.00%
3 or more vehicles	43.90%	42.80%	53.40%	62.90%

Source: U.S. Census

% of Labor Force Without Access to a Vehicle, by Census Tract Anchorage 2010



Source: U.S. Census