

# Anchorage Population by Areas



## **Table of Contents:**

Anchorage Population by Planning Areas & Community Councils, 2000-2010.....	20
Anchorage Community Councils Boundary Map .....	21
Anchorage Housing Stock, Vacancies, Household & Population by Census Tract, 2010 .....	22
Anchorage Census Tracts Map .....	23
Anchorage Housing Units by Census Tract, 2010 .....	24
% of Anchorage Housing Units in Multi-Family Structures by Census Tract, 2010.....	25
% of Housing Units Occupied by Owner, Anchorage Census Tracts, 2010.....	26
Anchorage Zip Code Boundaries Map .....	27
Population by Zip Code, Anchorage 2010 .....	28
Population & Housing Stock by Zip Code, Anchorage 2010.....	28
Anchorage Population's Gender & Race by Zip Code, 2010 .....	29
% Age Group by Zip Code, Anchorage 2010.....	29
Population Growth Rates, Anchorage & Selected Cities, 2000-2010 .....	30
Anchorage Population Major Sub-areas 1970, 80, 90, 2000 & 2010 .....	31

### Anchorage Population by Planning Areas & Community Councils, 2000-2010

Planning Area	Community Council Area	2,000	2,010	% Change
Eagle River/Chugiak		20,526	22,753	10.8%
	Birchwood	1,912	1,957	2.4%
	Chugiak & Eklutna	5,206	6,282	20.7%
	Eagle River	7,055	7,647	8.4%
	Eagle River Valley	5,542	5,888	6.2%
	South Fork	811	979	20.7%
JBER		2,402	2,641	10.0%
	Ft. Richardson	1,241	1,252	0.9%
	Elmendorf	1,161	1,389	19.6%
Northeast Anchorage		75,109	81,957	9.1%
	Airport Heights	9,165	10,549	15.1%
	Campbell Park	5,008	6,565	31.1%
	Mountain View	8,088	8,786	8.6%
	Northeast	18,111	18,420	1.7%
	Rogers Park	3,718	3,877	4.3%
	Russian Jack Park	12,637	13,398	6.0%
	Scenic Foothills	7,659	7,891	3.0%
	Tudor Area	2,861	4,136	44.6%
	University Area	7,862	8,335	6.0%
Northwest Anchorage		62,280	69,671	11.9%
	Downtown	3,079	3,405	10.6%
	Fairview	6,588	6,673	1.3%
	Government Hill	1,586	1,489	-6.1%
	Midtown	6,909	6,381	-7.6%
	North Star	4,253	5,019	18.0%
	South Addition	7,128	8,720	22.3%
	Spenard	20,081	24,927	24.1%
	Turnagain	12,656	13,057	3.2%
Southeast Anchorage		33,655	36,845	9.5%
	Abbott Loop	18,291	21,052	15.1%
	Hillside East & Glen Alps	864	1,069	23.7%
	Huffman/O'Malley	6,190	6,543	5.7%
	Mid-Hillside	5,579	5,463	-2.1%
	Rabbit Creek/Bear Valley	2,731	2,718	-0.5%
Southwest Anchorage		61,533	71,758	16.6%
	Old Seward/Oceanview	3,411	3,681	7.9%
	Sand Lake	29,899	34,136	14.2%
	Bayshore/Klatt/Taku/Campbell	28,223	33,941	20.3%
Turnagain Arm/Girdwood		4,778	6,201	29.8%
	Girdwood Valley	2,704	3,350	23.9%
	Turn. Arm (Bird Creek/Indian)	2,074	2,851	37.5%
Anchorage Total		260,283	291,826	12.1%

Source: U.S. Census

## Community Councils



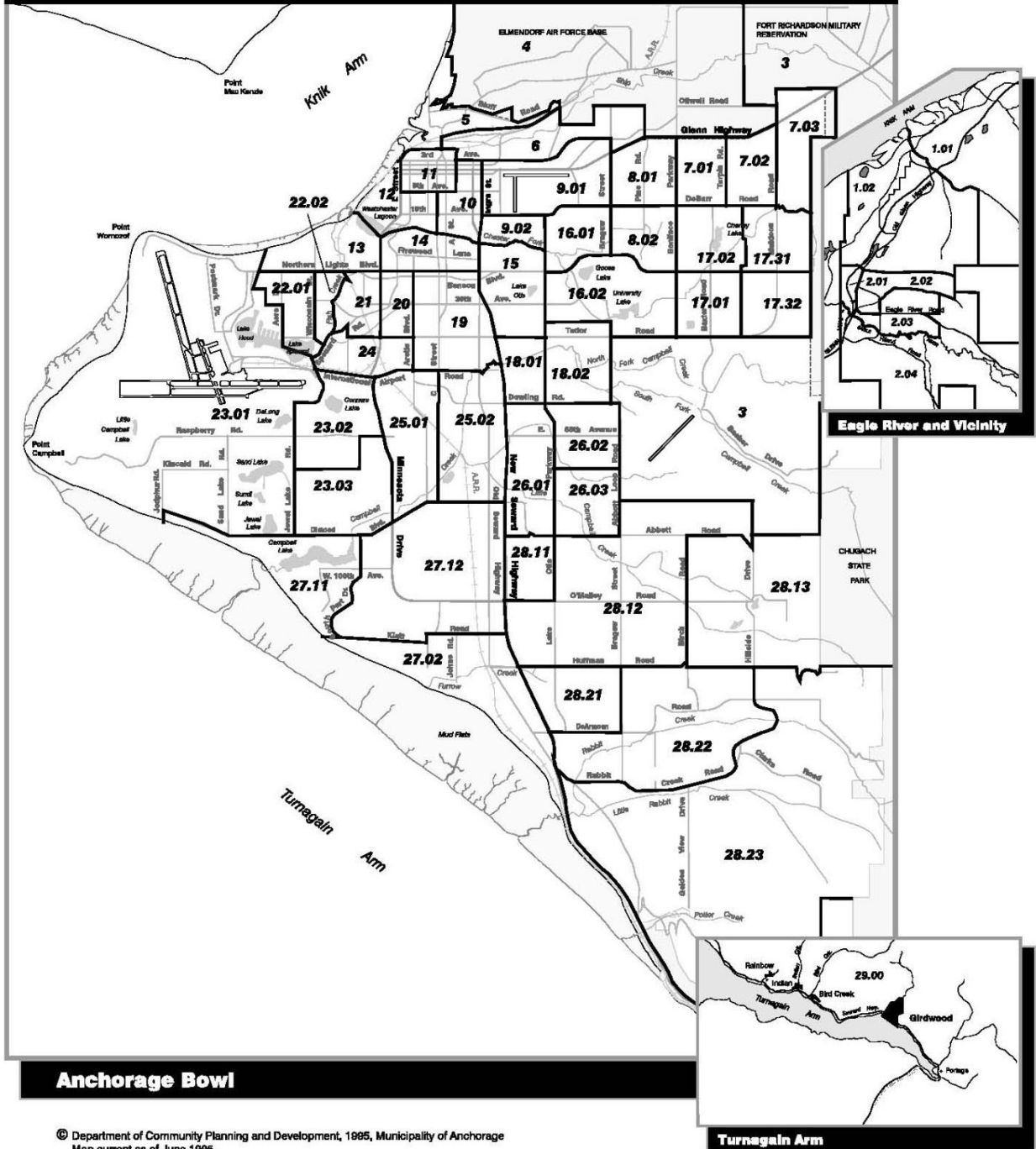
Source: Municipality of Anchorage

## Anchorage Housing Stock, Vacancies, Household & Population by Census Tract, 2010

Census Tract	Total Housing Units			Population				
	Total	Vacancies	% Vacant	Total Households	In Households	Institutionalized in Group Quarters	Non-institutionalized in Group Quarters	Total
1.01	2,048	102	5.0%	1,946	5,597	0	139	5,736
1.02	2,137	127	5.9%	2,010	5,243	1	15	5,259
2.01	1,593	58	3.6%	1,535	4,110	0	0	4,110
2.02	2,205	80	3.6%	2,125	5,932	10	5	5,947
2.03	3,518	62	1.8%	3,456	10,545	0	4	10,549
2.04	1,124	59	5.2%	1,065	2,956	425	0	3,381
3	1,845	90	4.9%	1,755	6,059	0	1,941	8,000
4	1,455	7	0.5%	1,448	5,199	0	738	5,937
5	999	51	5.1%	948	1,975	0	13	1,988
6	2,530	192	7.6%	2,338	7,250	40	457	7,747
7.01	2,234	93	4.2%	2,141	5,934	0	15	5,949
7.02	1,925	83	4.3%	1,842	5,062	21	24	5,107
7.03	2,255	174	7.7%	2,081	5,445	94	167	5,706
8.01	2,593	106	4.1%	2,487	7,206	37	80	7,323
8.02	1,917	82	4.3%	1,835	4,351	0	56	4,407
9.01	1,650	114	6.9%	1,536	4,153	629	124	4,906
9.02	1,525	71	4.7%	1,454	3,141	0	0	3,141
10	2,330	235	10.1%	2,095	3,712	0	419	4,131
11	510	59	11.6%	451	635	212	93	940
12	2,066	228	11.0%	1,838	3,531	171	16	3,718
13	1,282	45	3.5%	1,237	3,044	4	11	3,059
14	2,736	148	5.4%	2,588	5,101	107	16	5,224
15	2,112	74	3.5%	2,038	5,032	36	36	5,104
16.01	1,542	59	3.8%	1,483	3,924	113	55	4,092
16.02	1,533	76	5.0%	1,457	3,705	275	244	4,224
17.01	2,810	101	3.6%	2,709	6,817	18	8	6,843
17.02	2,015	48	2.4%	1,967	5,225	10	23	5,258
17.31	2,233	99	4.4%	2,134	5,784	15	24	5,823
17.32	2,169	58	2.7%	2,111	6,114	13	52	6,179
18.01	2,162	56	2.6%	2,106	4,900	0	7	4,907
18.02	2,282	129	5.7%	2,153	5,184	83	270	5,537
19	1,825	86	4.7%	1,739	3,881	210	103	4,194
20	1,632	117	7.2%	1,515	3,748	0	0	3,748
21	1,891	144	7.6%	1,747	3,773	8	6	3,787
22.01	1,977	87	4.4%	1,890	5,047	2	4	5,053
22.02	1,462	96	6.6%	1,366	2,936	2	22	2,960
23.01	2,518	69	2.7%	2,449	7,059	0	29	7,088
23.02	1,889	74	3.9%	1,815	4,753	12	26	4,791
23.03	3,451	136	3.9%	3,315	9,199	46	28	9,273
24	1,319	61	4.6%	1,258	3,161	2	136	3,299
25.01	1,995	86	4.3%	1,909	4,971	5	17	4,993
25.02	2,437	130	5.3%	2,307	5,228	8	0	5,236
26.01	1,746	97	5.6%	1,649	4,750	20	14	4,784
26.02	2,063	68	3.3%	1,995	5,779	0	26	5,805
26.03	2,147	42	2.0%	2,105	6,303	30	8	6,341
27.02	3,602	106	2.9%	3,496	9,623	30	17	9,670
27.11	2,497	74	3.0%	2,423	6,555	23	11	6,589
27.12	3,430	172	5.0%	3,258	8,966	39	63	9,068
28.11	2,690	138	5.1%	2,552	6,304	9	0	6,313
28.12	2,488	72	2.9%	2,416	7,089	57	20	7,166
28.13	1,729	63	3.6%	1,666	4,575	0	4	4,579
28.21	1,666	30	1.8%	1,636	5,033	0	17	5,050
28.22	1,480	41	2.8%	1,439	3,994	11	15	4,020
28.23	1,904	86	4.5%	1,818	5,217	0	0	5,217
29	1,859	659	35.4%	1,200	2,566	0	4	2,570
<b>All Areas</b>	<b>113,032</b>	<b>5,700</b>	<b>5.0%</b>	<b>107,332</b>	<b>283,376</b>	<b>2,828</b>	<b>5,622</b>	<b>291,826</b>

Source: U.S. Census

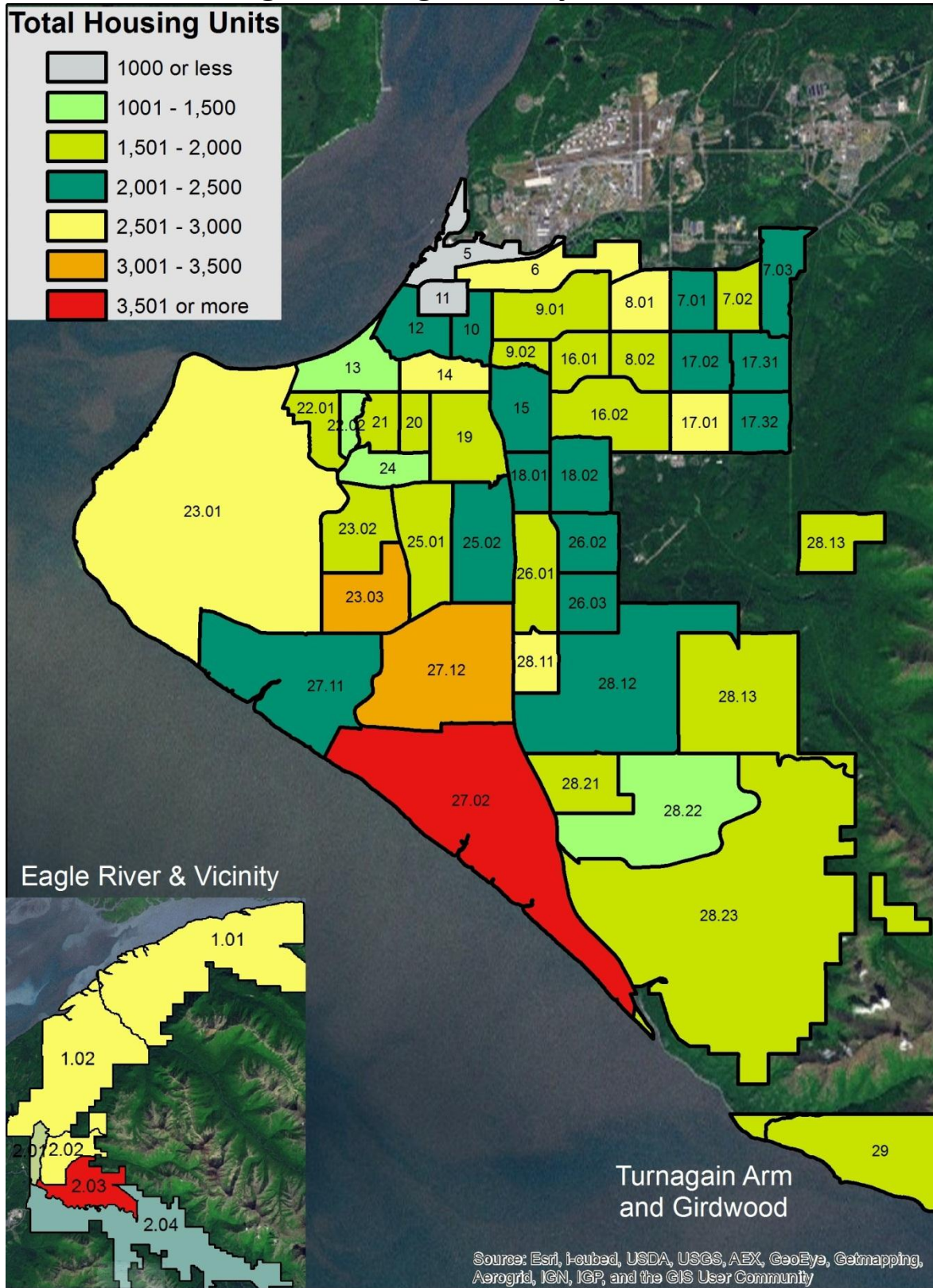
# Census Tracts



## Anchorage Bowl

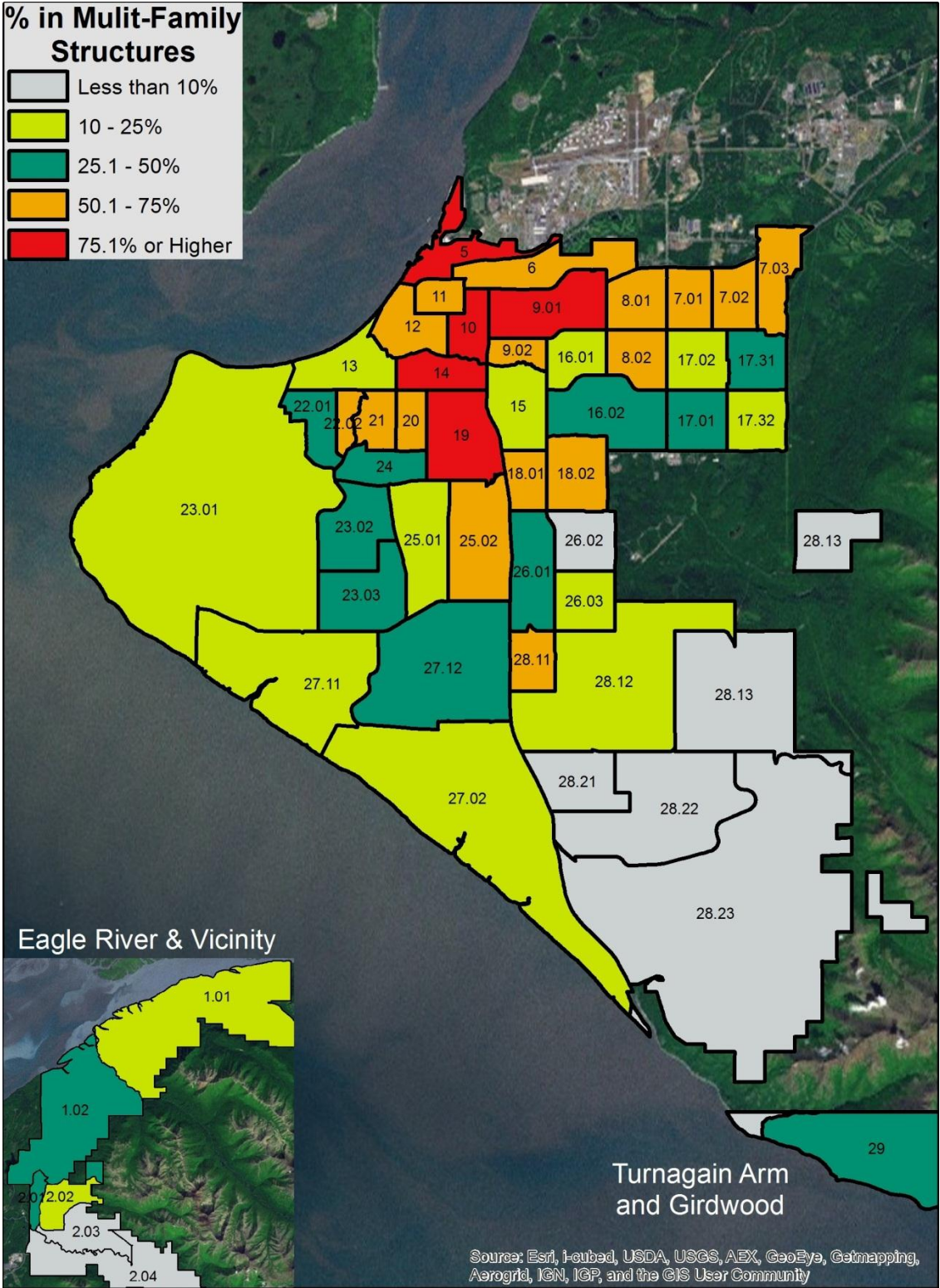
© Department of Community Planning and Development, 1995, Municipality of Anchorage  
Map current as of June 1996

## Anchorage Housing Units by Census Tract, 2010



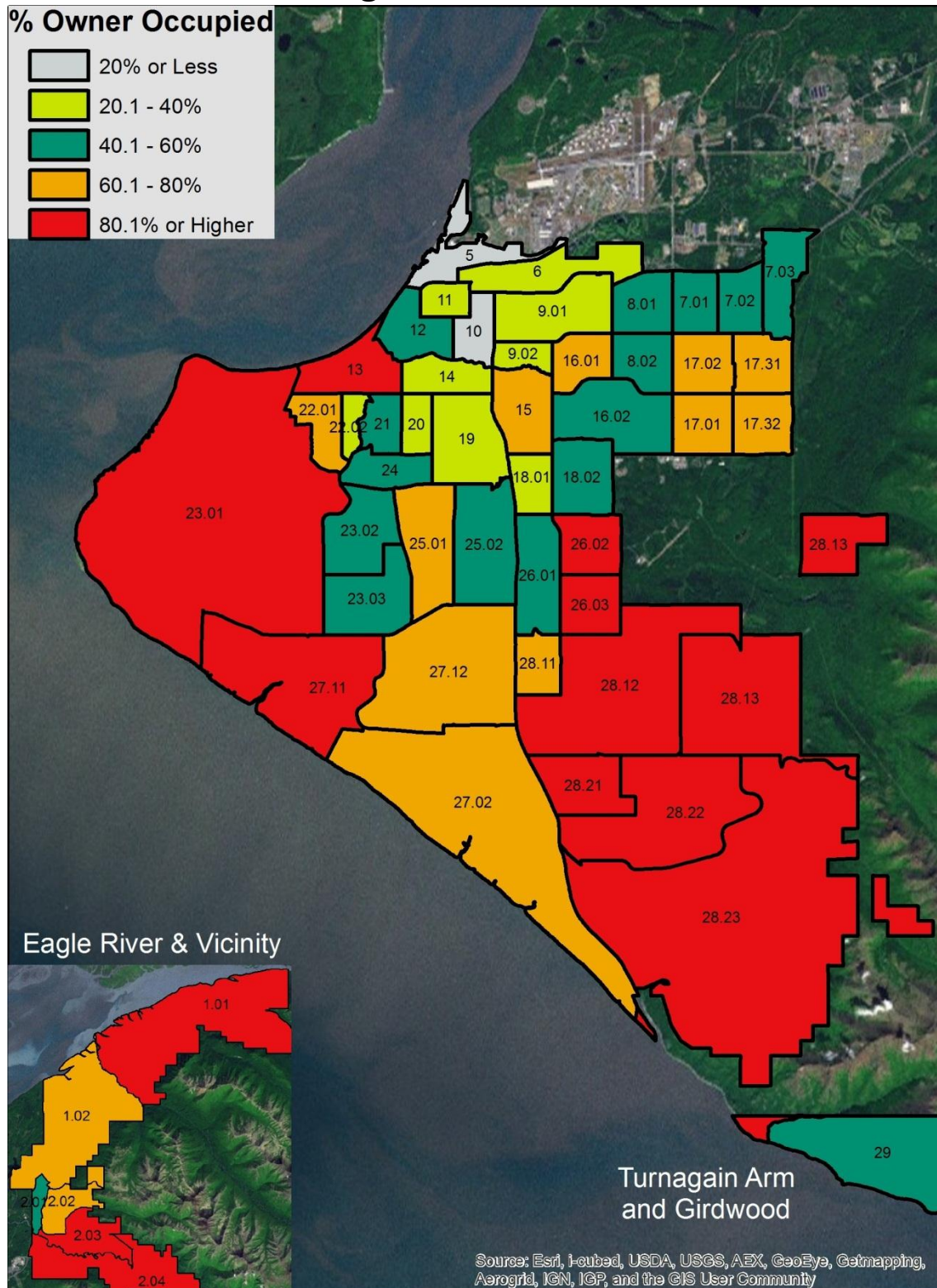
Source: U.S. Census

# % of Anchorage Housing Units in Multi-Family Structures by Census Tract, 2010



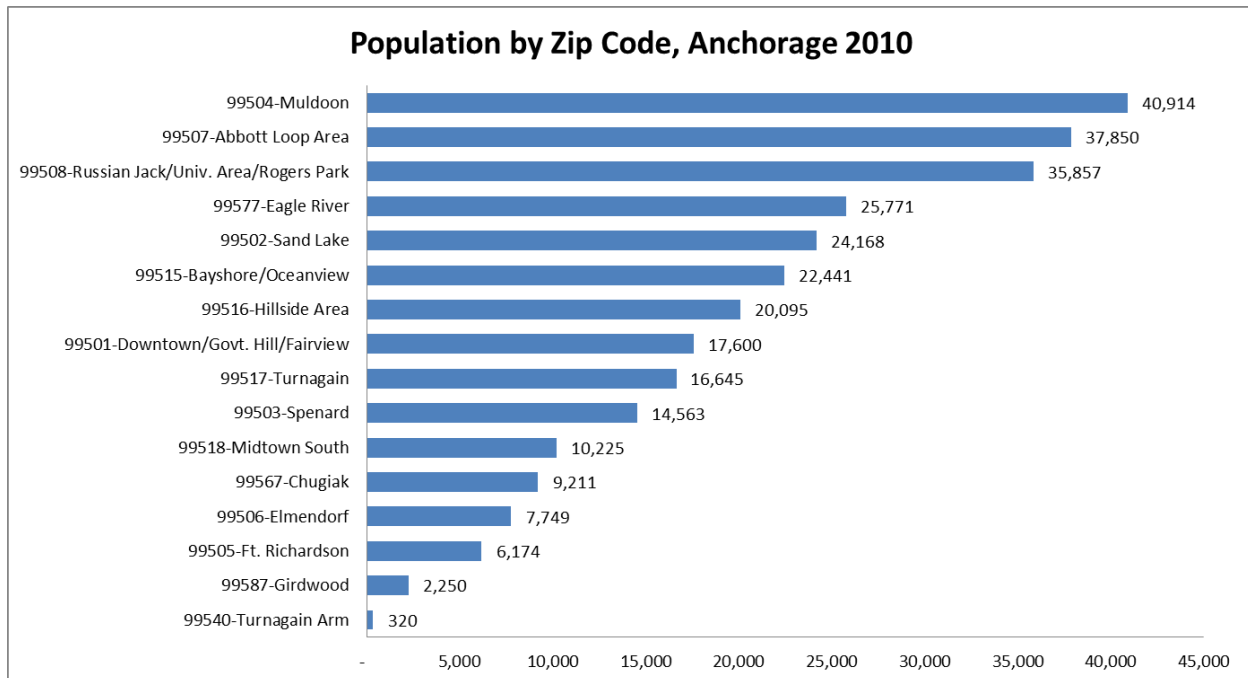
Source: U.S. Census

## % of Housing Units Occupied by Owner, Anchorage Census Tracts, 2010



Source: U.S. Census





Source: U.S. Census

## Population & Housing Stock by Zip Code, Anchorage 2010

Zip Code	Description of Area	Housing Units				Population				
		Total	Vacant	Rate	Occupied	Average Household Size	In Households	Institutionalized in Group Housing	Noninstitutionalized in Group Housing	Total
99501	Downtown, Govt. Hill, Fairview	8,588	734	8.5%	7,854	1.98	15,523	1,012	1,065	17,600
99502	Sand Lake	9,206	341	3.7%	8,865	2.71	24,014	71	83	24,168
99503	Spenard	6,667	365	5.5%	6,302	2.22	13,995	319	249	14,563
99504	Muldoon	15,642	656	4.2%	14,986	2.7	40,430	171	313	40,914
99505	Ft. Richardson	1,239	69	5.6%	1,170	3.62	4,237	0	1,937	6,174
99506	Elmendorf	2,043	13	0.6%	2,030	3.46	7,014	0	735	7,749
99507	Abbott Loop Area	14,475	515	3.6%	13,960	2.7	37,674	95	81	37,850
99508	Russian Jack, Univ. Area, Rogers Park	13,489	685	5.1%	12,804	2.69	34,472	584	801	35,857
99515	Bayshore, Oceanview	8,282	301	3.6%	7,981	2.79	22,271	79	91	22,441
99516	Hillside Area	7,114	235	3.3%	6,879	2.91	20,029	32	34	20,095
99517	Turnagain	7,358	408	5.5%	6,950	2.38	16,572	16	57	16,645
99518	Midtown South	4,431	216	4.9%	4,215	2.42	10,195	13	17	10,225
99540	Turnagain Arm	201	45	22.4%	156	2.05	320	0	0	320
99567	Chugiak	3,495	202	5.8%	3,293	2.75	9,071	1	139	9,211
99577	Eagle River	9,130	286	3.1%	8,844	2.86	25,312	435	24	25,771
99587	Girdwood	1,658	614	37.0%	1,044	2.15	2,246	0	4	2,250
All Areas		113,018	5,685	5.0%	107,333					289,583

Source: U.S. Census

## Anchorage Population's Gender & Race by Zip Code, 2010

Zip Code	Total Persons	Gender		% Population By Race								Households		
		Male	Female	White alone	Black or African American alone	American Indian and Alaska Native alone	Asian alone	Native Hawaiian and Other Pacific Islander alone	Hispanic or Latino	Some Other Race alone	Two or More Races	Family	Non-Family	Total
99501	17,603	9,510	8,093	54.9%	8.2%	11.6%	6.9%	3.6%	7.8%	0.2%	6.7%	39.0%	61.0%	7,854
99502	24,168	12,028	12,140	65.0%	2.9%	7.3%	9.1%	2.0%	6.4%	0.2%	7.3%	70.2%	29.8%	8,865
99503	14,563	7,649	6,914	47.7%	5.1%	12.2%	12.5%	3.3%	11.1%	0.2%	7.9%	46.6%	53.4%	6,302
99504	40,914	20,253	20,661	54.6%	9.6%	8.7%	8.1%	2.5%	7.7%	0.2%	8.7%	66.4%	33.6%	14,986
99505	6,174	3,824	2,350	65.7%	12.5%	1.4%	1.7%	0.8%	13.8%	0.3%	4.0%	94.4%	5.6%	1,170
99506	7,749	4,105	3,644	71.9%	8.9%	0.6%	2.1%	0.4%	11.3%	0.1%	4.6%	96.7%	3.3%	2,030
99507	37,850	18,965	18,885	61.2%	3.8%	7.9%	10.3%	1.2%	8.1%	0.2%	7.3%	67.4%	32.6%	13,960
99508	35,857	17,830	18,027	45.4%	8.5%	11.4%	11.6%	4.9%	9.4%	0.3%	8.5%	60.8%	39.2%	12,804
99515	22,441	11,145	11,296	64.8%	3.0%	6.8%	9.7%	0.7%	7.8%	0.2%	6.9%	73.6%	26.4%	7,981
99516	20,095	10,238	9,857	83.6%	1.5%	3.2%	3.9%	0.1%	3.5%	0.2%	3.8%	83.3%	16.7%	6,879
99517	16,645	8,441	8,204	64.0%	2.8%	7.5%	10.0%	2.4%	6.5%	0.2%	6.6%	56.9%	43.1%	6,950
99518	10,225	5,170	5,055	61.6%	4.6%	7.6%	8.1%	2.3%	8.2%	0.1%	7.4%	58.5%	41.5%	4,215
99540	320	184	136	92.5%	0.0%	4.1%	0.6%	0.0%	1.3%	0.3%	1.3%	50.0%	50.0%	156
99567	9,211	4,737	4,474	83.1%	0.8%	5.3%	1.6%	0.1%	3.7%	0.1%	5.5%	75.0%	25.0%	3,293
99577	25,771	12,895	12,876	80.9%	2.2%	3.7%	2.5%	0.3%	5.5%	0.2%	4.8%	79.5%	20.5%	8,844
99587	2,250	1,240	1,010	88.7%	0.1%	1.7%	2.8%	0.0%	3.9%	0.1%	2.5%	47.5%	52.5%	1,044
All Areas	291,836	148,214	143,622	62.6%	5.2%	7.6%	8.0%	2.0%	7.6%	0.2%	6.9%	65.7%	34.3%	107,333

Source: U.S. Census

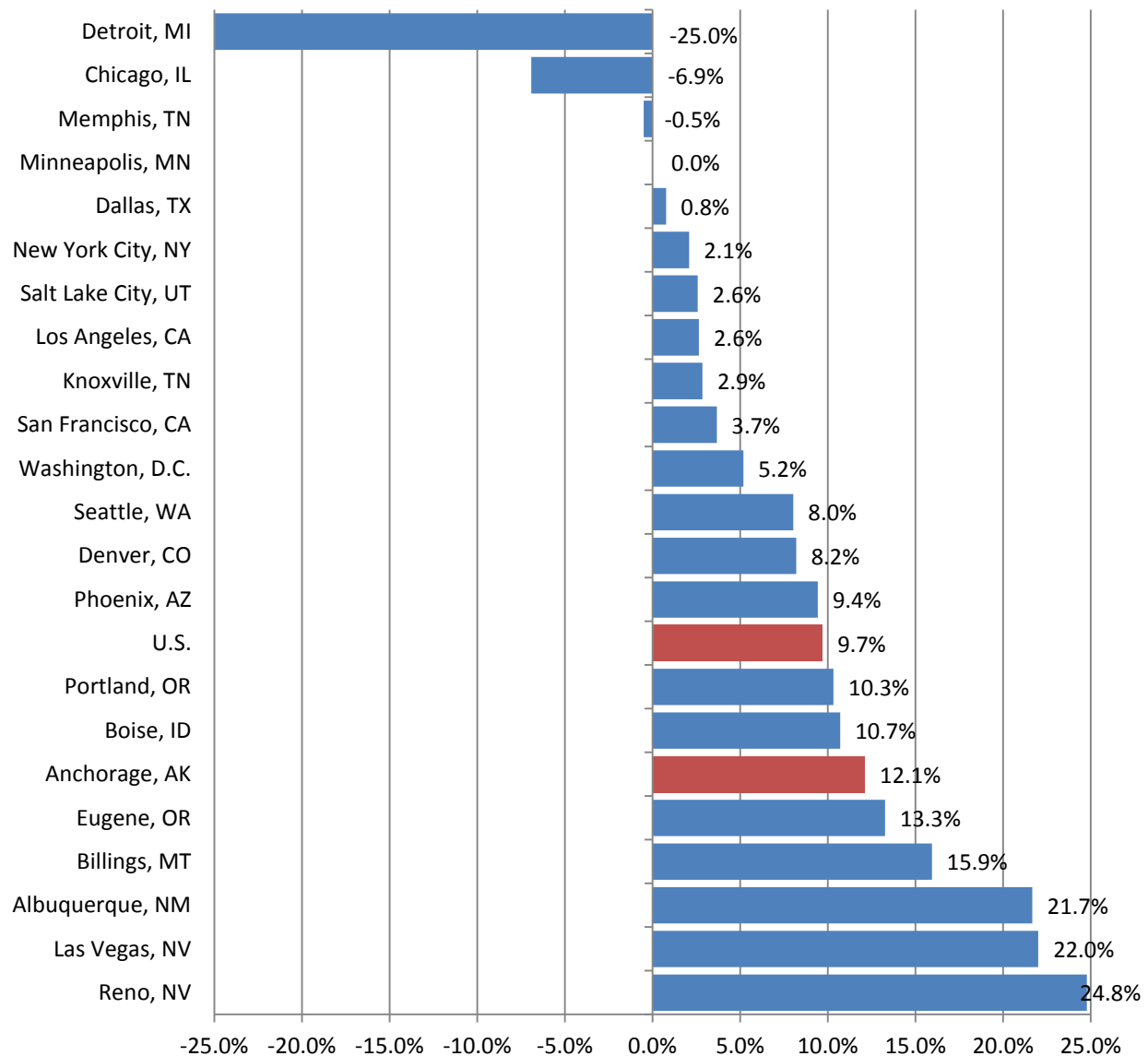
## % Age Group by Zip Code, Anchorage 2010

Zip Code	Total	% Population by Age Group																	
		Under 5	5-9	10-14	15-17	18-19	20	21	22-24	25-29	30-34	35-39	40-44	45-49	50-54	55-59	60-61	62-64	65 & up
99501	17,603	6.2%	4.8%	4.1%	2.2%	2.3%	1.5%	1.6%	6.0%	11.4%	8.2%	6.8%	6.7%	7.4%	7.7%	7.2%	2.4%	3.0%	10.6%
99502	24,168	7.4%	7.1%	7.3%	4.7%	2.7%	1.3%	1.3%	4.6%	8.3%	6.7%	7.0%	6.8%	8.0%	7.9%	6.7%	2.2%	2.7%	7.3%
99503	14,563	6.9%	5.7%	5.2%	3.0%	2.7%	1.8%	1.9%	6.6%	10.4%	7.9%	6.1%	6.9%	7.9%	7.6%	6.7%	2.1%	2.5%	8.1%
99504	40,914	8.3%	7.4%	6.9%	4.3%	2.8%	1.5%	1.7%	5.4%	8.9%	7.3%	6.4%	6.0%	7.0%	7.2%	5.9%	2.2%	2.6%	8.2%
99505	6,174	13.3%	9.1%	6.7%	2.4%	5.7%	6.7%	6.2%	16.4%	15.2%	7.8%	5.6%	3.5%	1.0%	0.3%	0.2%	0.1%	0.0%	0.0%
99506	7,749	16.0%	12.4%	8.7%	2.4%	3.4%	4.1%	3.6%	10.4%	13.8%	11.2%	7.6%	4.1%	1.5%	0.4%	0.1%	0.0%	0.0%	0.2%
99507	37,850	7.0%	7.1%	7.4%	4.6%	2.9%	1.5%	1.5%	5.3%	8.7%	6.9%	7.1%	7.0%	8.1%	7.9%	6.2%	2.1%	2.5%	6.2%
99508	35,857	8.4%	7.4%	7.0%	4.9%	3.7%	1.9%	1.8%	5.6%	8.7%	6.8%	5.9%	5.8%	6.8%	6.8%	5.9%	1.9%	2.4%	8.5%
99515	22,441	7.0%	7.3%	7.9%	5.0%	2.8%	1.3%	1.1%	3.9%	7.1%	6.8%	7.2%	7.4%	8.4%	7.9%	7.0%	2.2%	2.7%	7.1%
99516	20,095	5.0%	7.1%	8.5%	5.8%	2.6%	1.0%	0.7%	2.2%	3.2%	3.6%	6.0%	8.4%	10.5%	10.9%	10.1%	2.9%	3.9%	7.7%
99517	16,645	6.0%	5.8%	5.8%	3.8%	2.6%	1.4%	1.2%	4.8%	8.4%	7.0%	6.9%	6.6%	8.0%	8.5%	8.2%	2.7%	3.3%	9.1%
99518	10,225	7.1%	6.0%	5.8%	3.9%	2.6%	1.5%	1.6%	5.5%	10.5%	8.0%	6.5%	6.7%	7.7%	7.1%	6.6%	2.4%	2.7%	7.8%
99540	320	3.1%	2.8%	5.3%	2.5%	1.6%	0.3%	0.9%	2.2%	5.6%	8.1%	6.3%	4.1%	9.4%	12.8%	14.7%	5.6%	4.4%	10.3%
99567	9,211	6.6%	6.9%	7.7%	5.0%	2.7%	0.9%	1.0%	2.9%	5.2%	5.4%	7.0%	7.7%	10.7%	9.9%	7.7%	2.7%	2.8%	7.4%
99577	25,771	7.5%	7.6%	8.1%	5.2%	2.6%	1.2%	1.2%	3.5%	6.9%	7.7%	7.6%	7.7%	8.4%	8.2%	6.8%	2.3%	2.6%	5.0%
99587	2,250	5.2%	4.8%	5.7%	2.8%	1.2%	0.6%	1.0%	3.4%	11.5%	11.8%	10.0%	8.6%	7.8%	8.2%	8.0%	2.4%	2.7%	4.3%
All Areas	291,836	7.5%	7.1%	7.0%	4.4%	2.9%	1.6%	1.6%	5.2%	8.5%	7.1%	6.7%	6.7%	7.7%	7.6%	6.5%	2.2%	2.6%	7.2%

Shaded areas denote a population greater than 10%

Source: U.S. Census

## Population Growth Rates, Anchorage and Selected Cities, 2000-2010

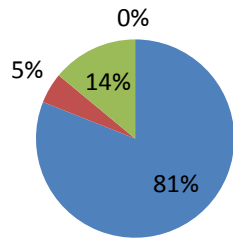


Source: U.S. Census Bureau

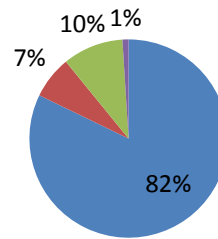
# Anchorage Population Major Sub-areas 1970, 80, 90, 2000 & 2010

■ Anchorage Bowl ■ Eagle River ■ Military Bases ■ Turnagain Arm

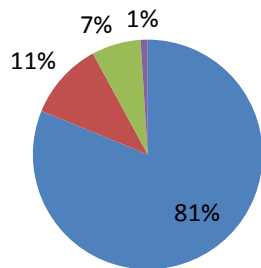
**1970: 126,385**



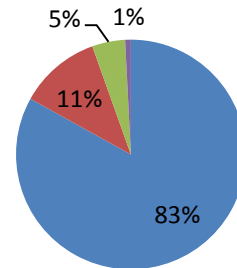
**1980: 174,431**



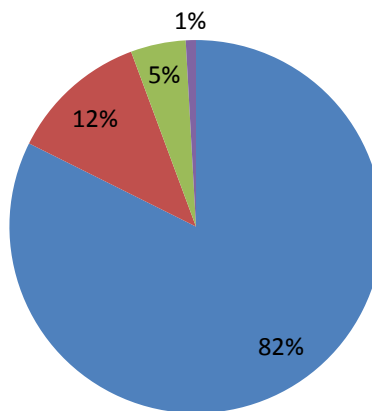
**1990: 226,338**



**2000: 260,283**



**2010: 291,826**



Source: U.S. Census