

Exhibit M
of
PZC Case 2011-104 Issue-Response

Photo Imagery Map Series:
Illustrating a 50-Foot Stream Setback on Six Streams
in the Anchorage Bowl

Note: This document is provided as background information to issue-response item #2 (pages 12 and 13) of the June 15, 2012 Issue-Response Memorandum for Chapter 7.

Planning and Zoning Commission
Case 2011-104, Provisionally Adopted Title 21
*Issue-Response Memoranda – **Exhibit M***

This page intentionally left blank.

Exhibit M

Table of Contents:

Streams Vicinity Map 1 - Chester, Fish, Rabbit, and Ship Creeks	Page 1
Streams Vicinity Map 2 - Little Campbell Creek	Page 2
Chester Creek imagery map series	Pages 3-7
Fish Creek imagery map series	Pages 8-13
Little Campbell Creek, North Fork imagery map series	Pages 14-16
Little Campbell Creek, North Fork imagery map series	Pages 17-19
Rabbit Creek imagery map series	Pages 20-23
Ship Creek imagery map series	Pages 24-26

NOTE: Imagery map series are arranged in order of starting at a point downstream and moving upstream.

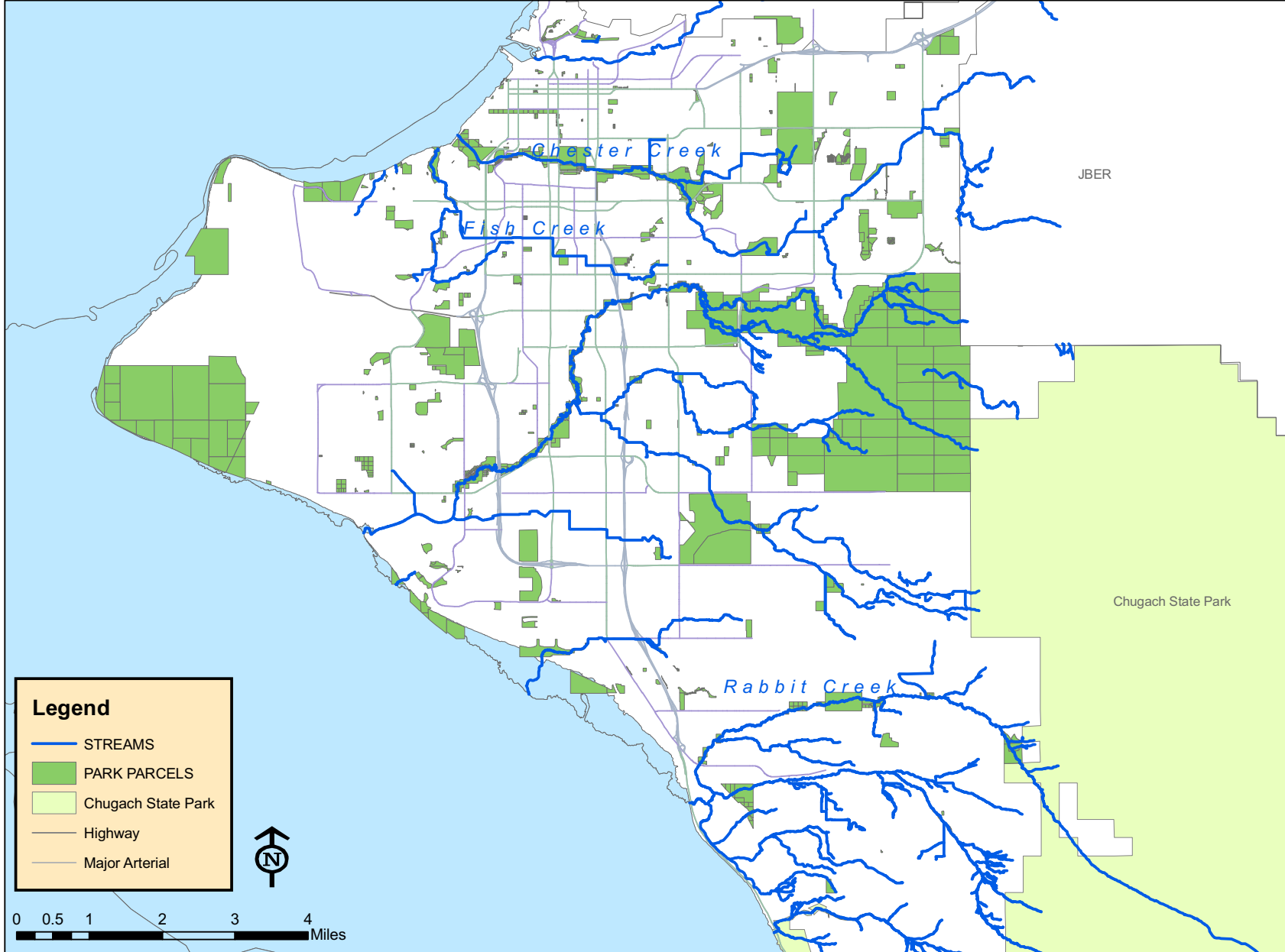
Stream segments in culverts are not subject to the stream setback requirements of title 21, but these segments are not distinguished on the maps.

Planning and Zoning Commission
Case 2011-104, Provisionally Adopted Title 21
*Issue-Response Memoranda – **Exhibit M***

This page intentionally left blank.

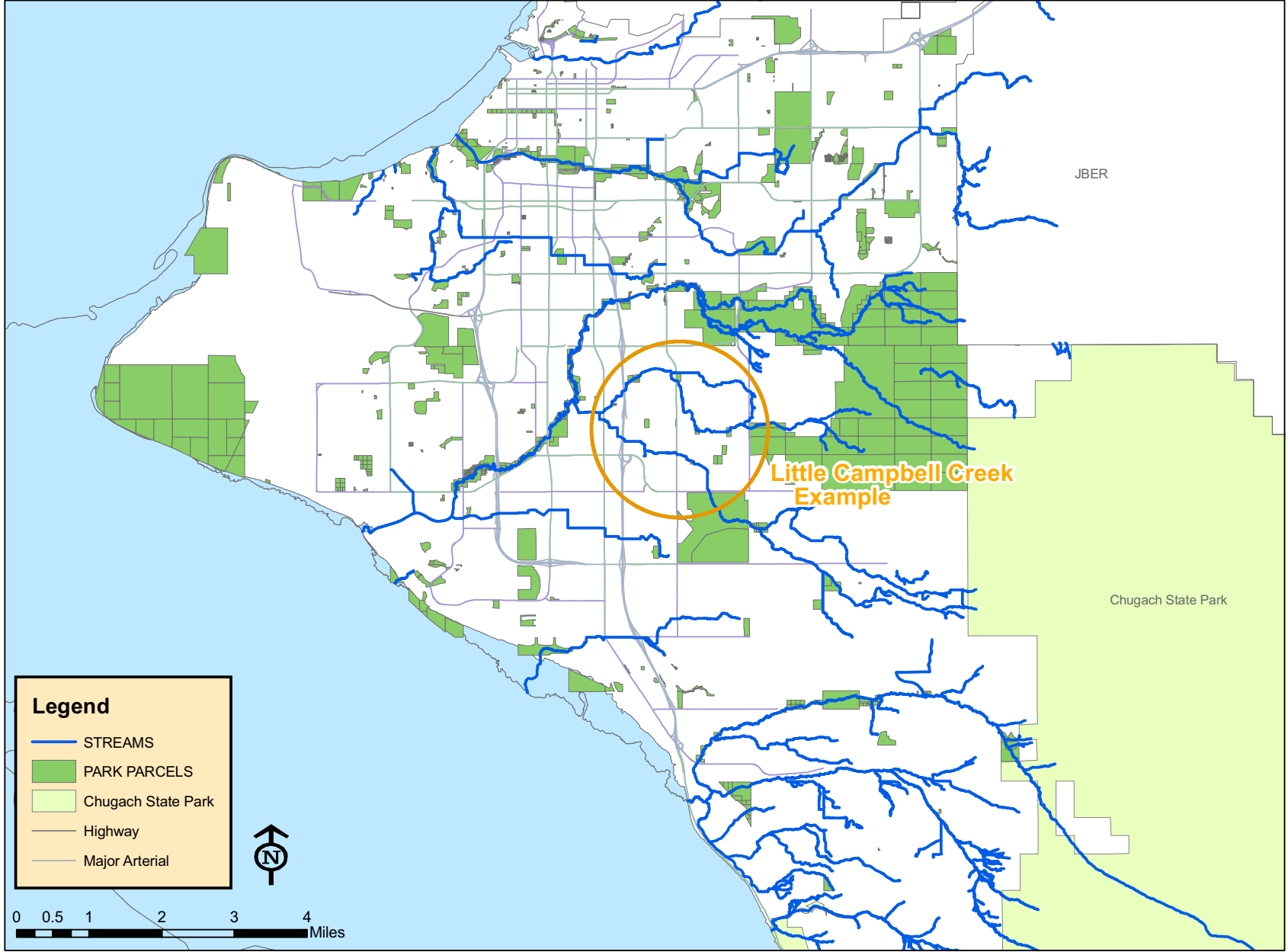
Illustration of 50-ft Stream Setbacks:

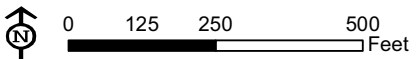
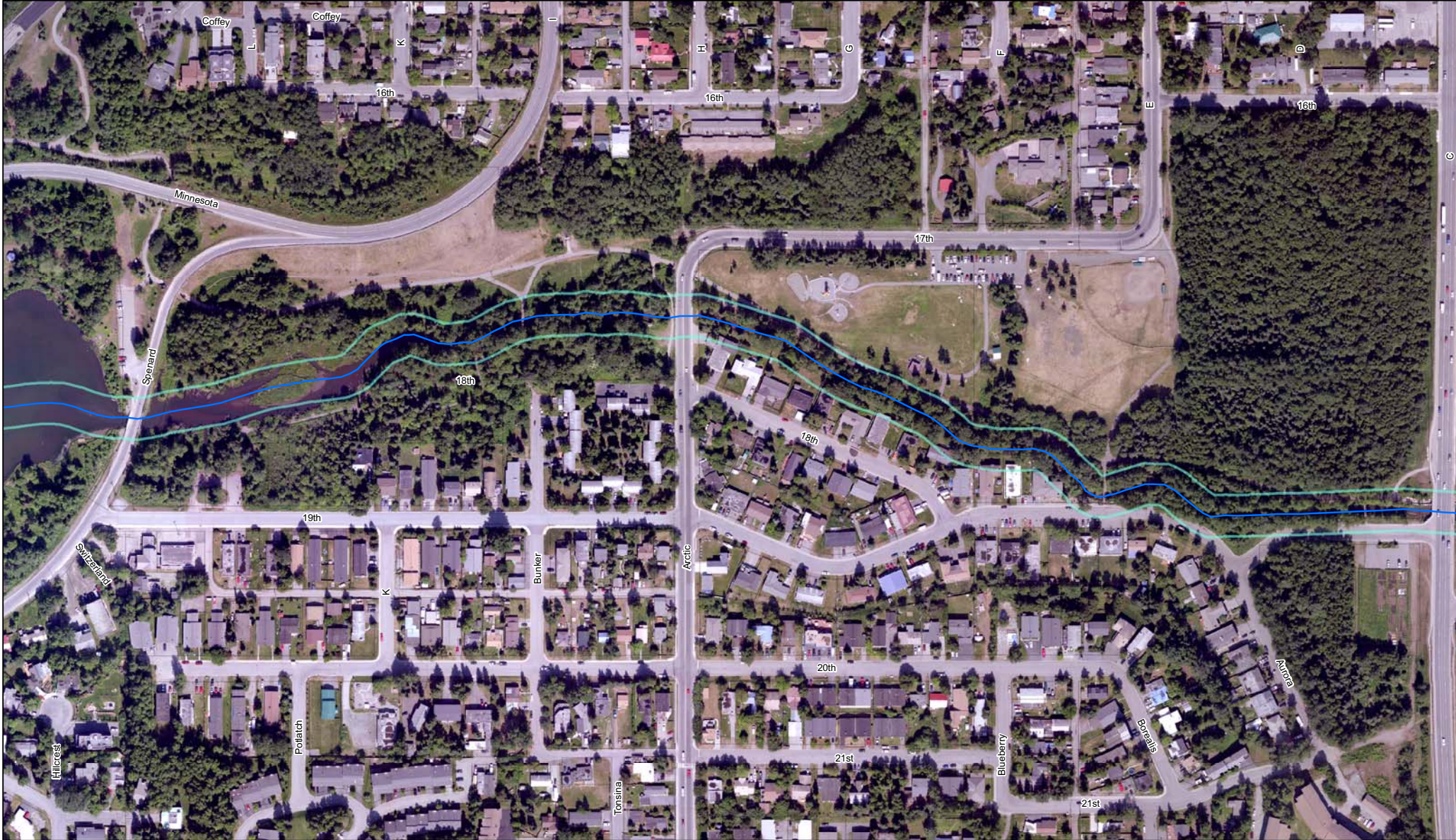
Anchorage Bowl



Stream Setbacks

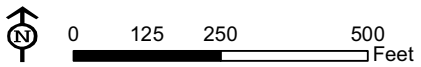
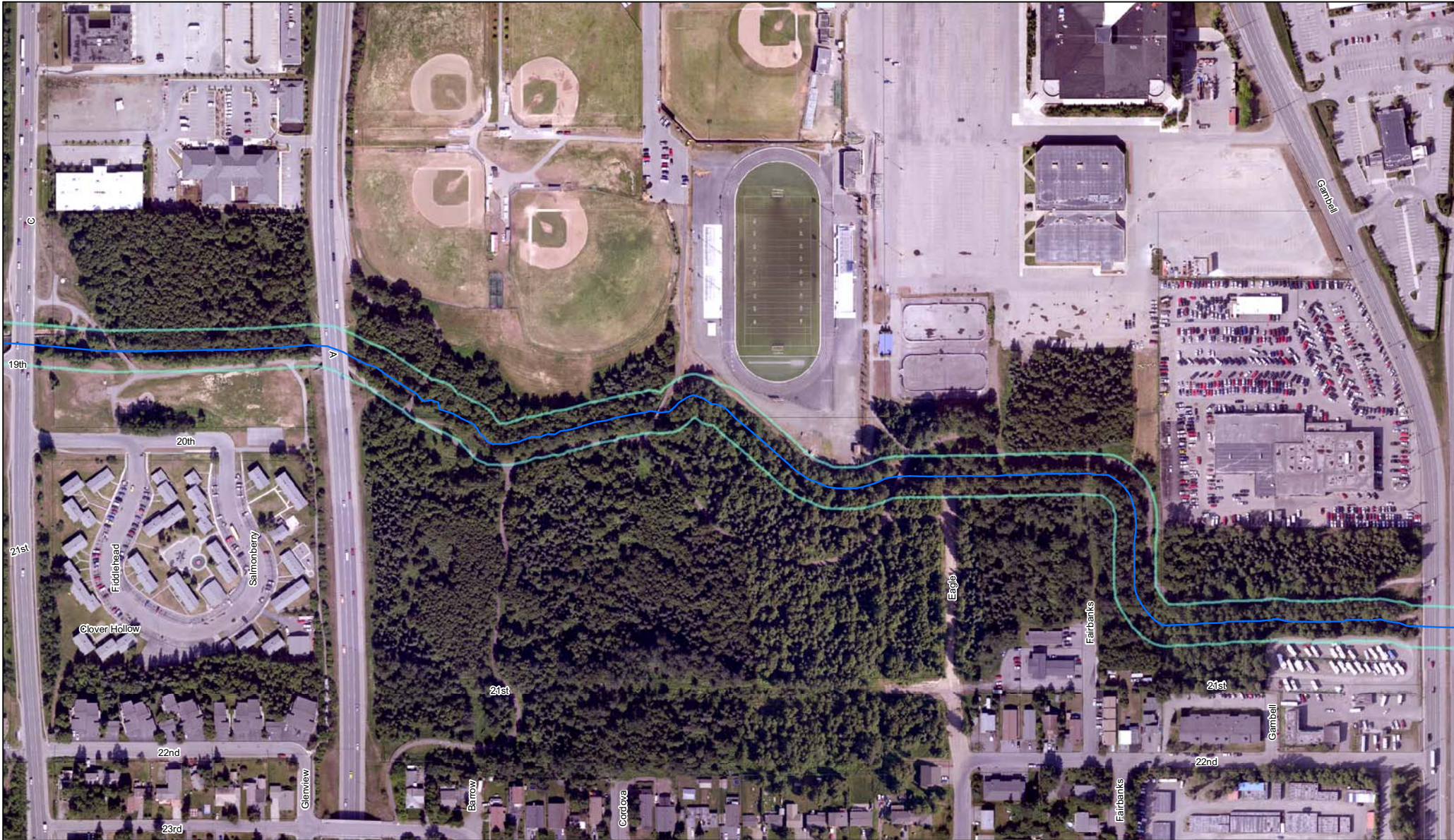
Illustration of 50-ft





Note: sections of streams within culverts are not subject to the setback.

MOA Long-Range Planning 2009 Aerial Photo

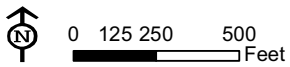
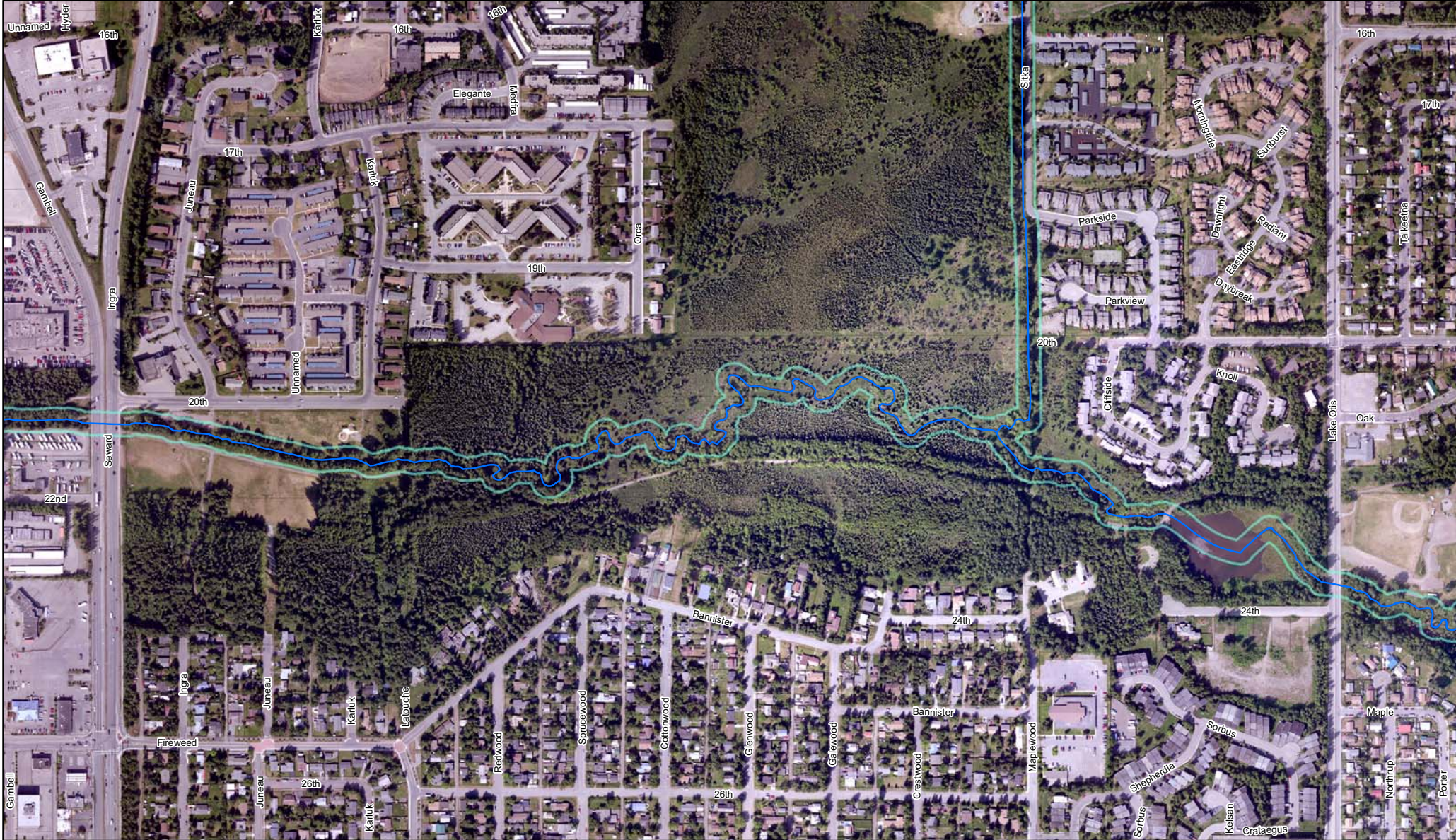


Note: sections of streams within culverts are not subject to the setback.

MOA Long-Range Planning 2009 Aerial Photo

Chester Creek

50-foot setback

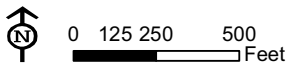
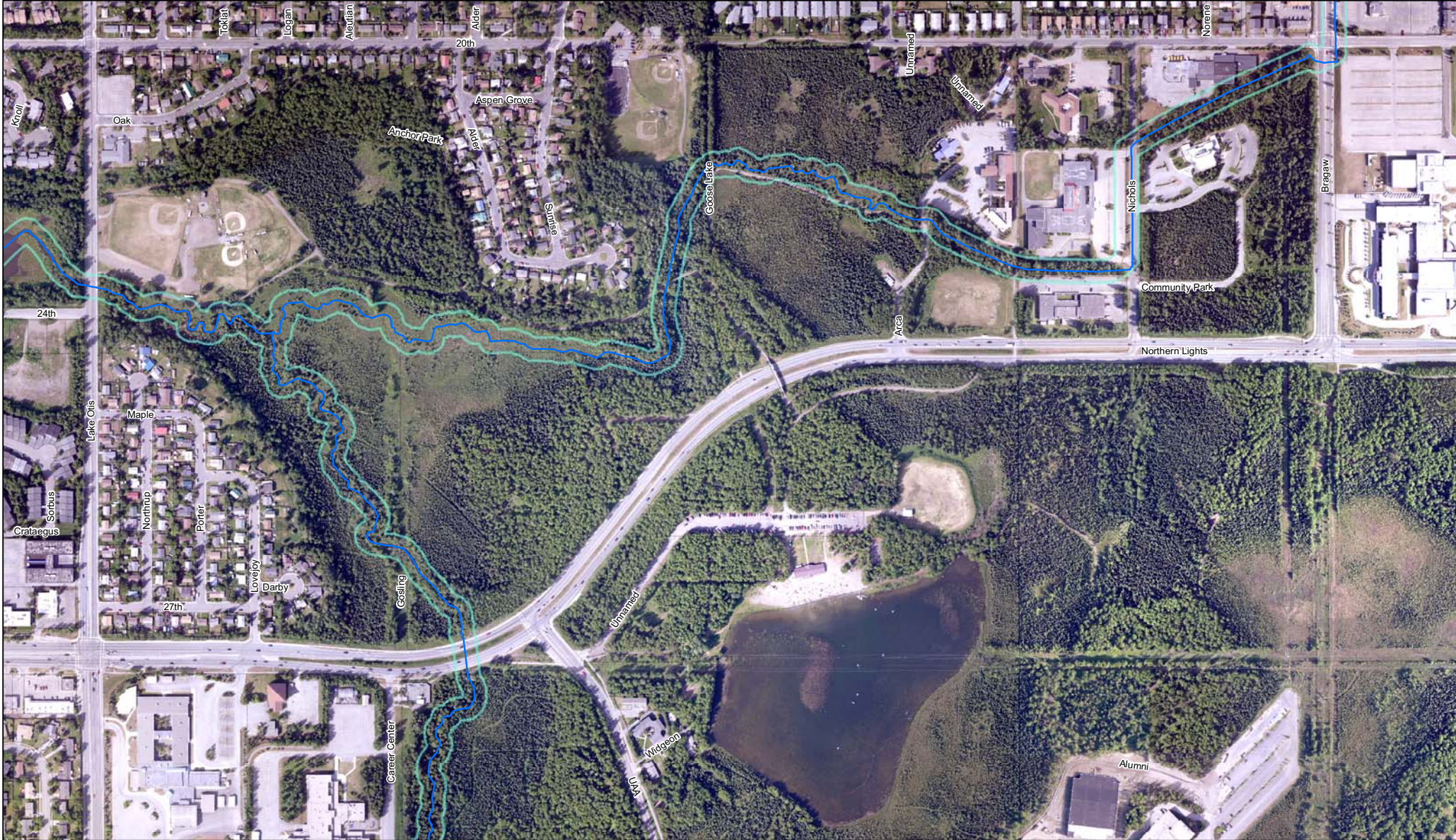


Note: sections of streams within culverts are not subject to the setback.

MOA Long-Range Planning 2009 Aerial Photo

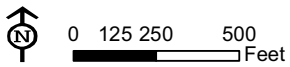
Chester Creek

50-foot setback



Note: sections of streams within culverts are not subject to the setback.

MOA Long-Range Planning 2009 Aerial Photo



Note: sections of streams within culverts are not subject to the setback.

MOA Long-Range Planning 2009 Aerial Photo

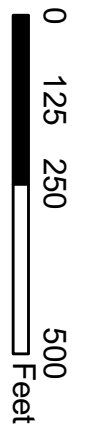
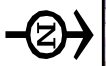




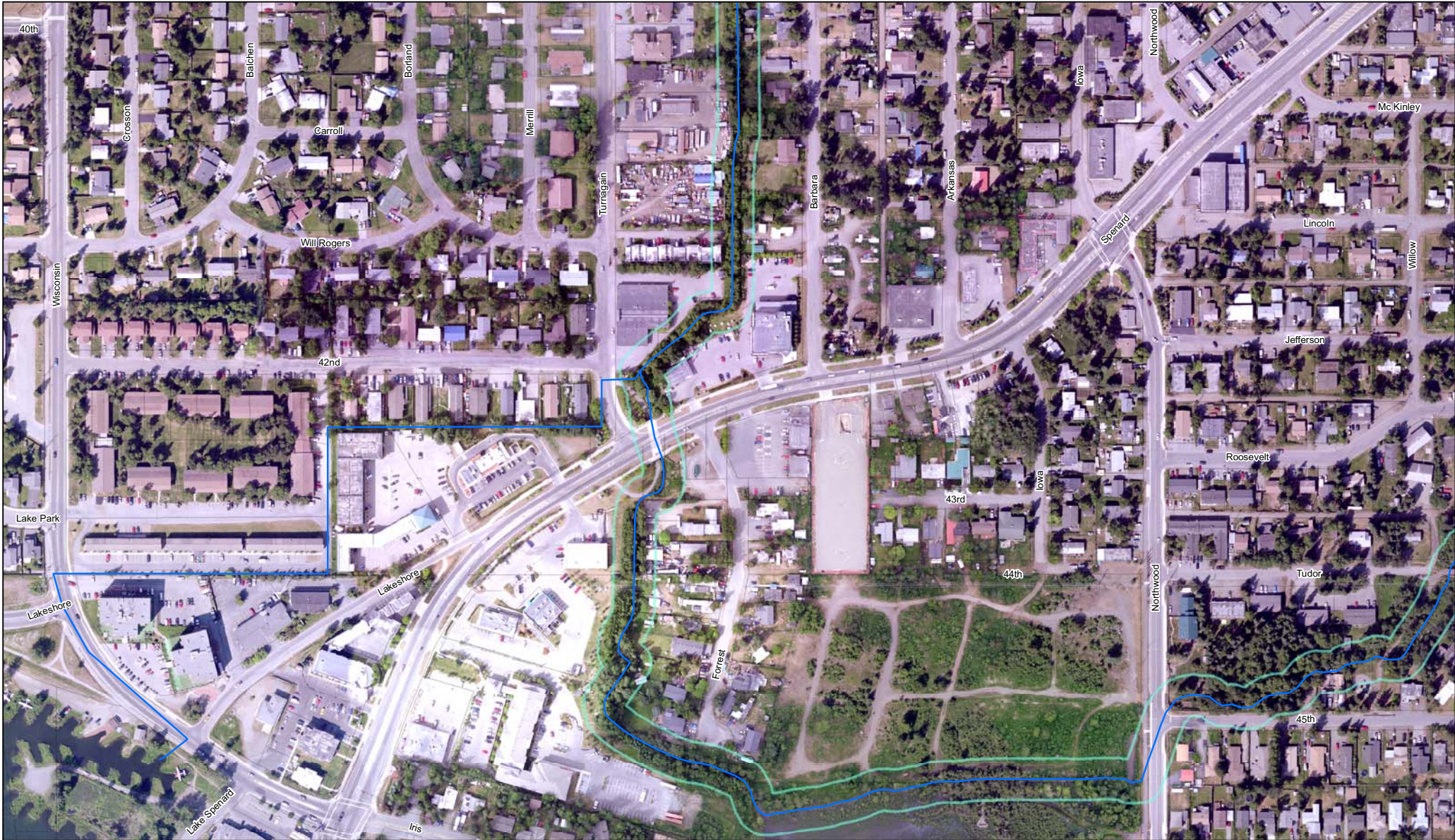
Note: sections of streams within culverts are not subject to the setback.

Fish Creek

50-foot setback



Note: sections of streams within culverts are not subject to the setback.
MOA Long-Range Planning 2009 Aerial Photo

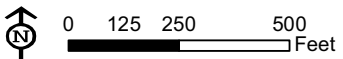
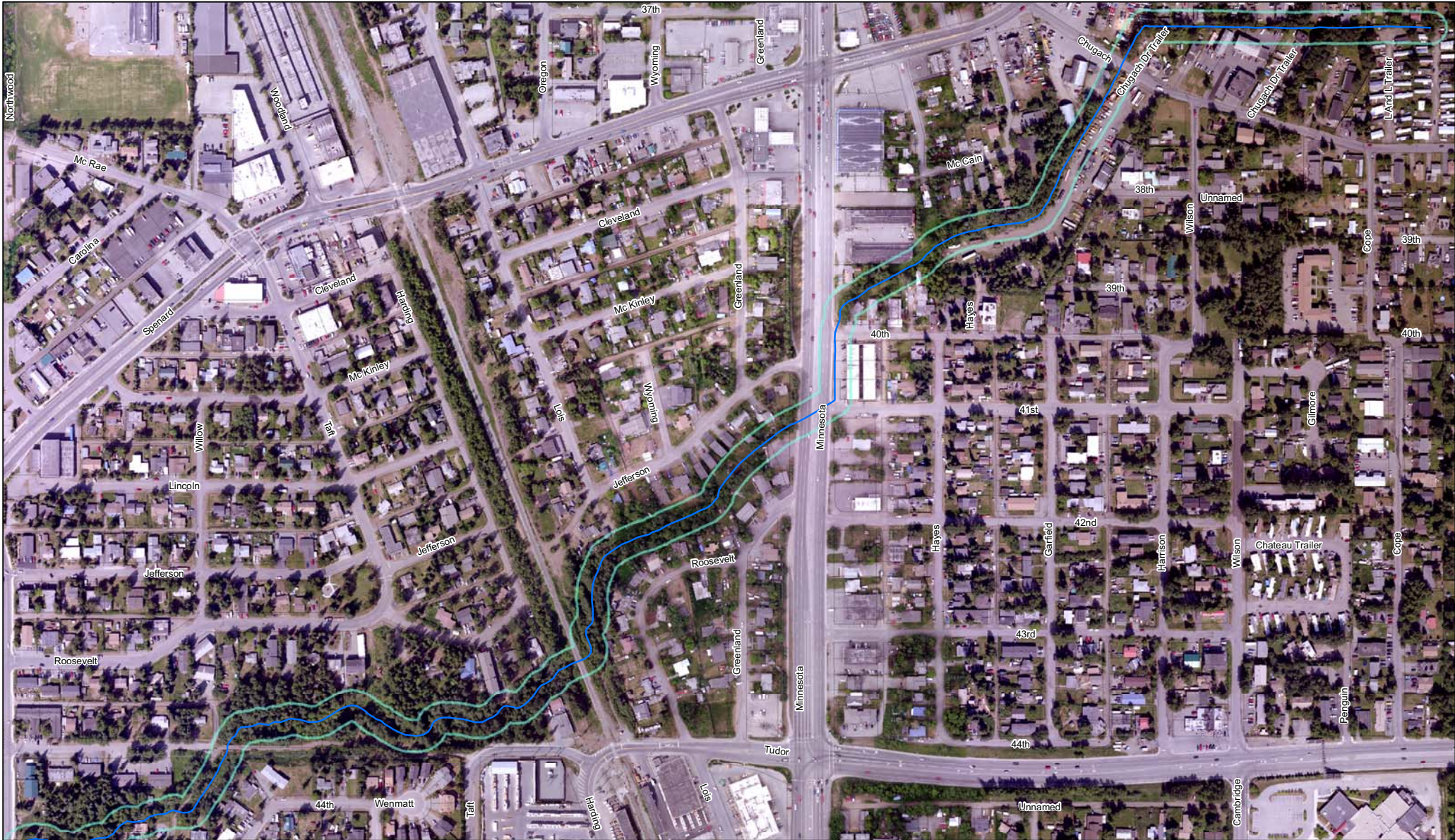


Note: sections of streams within culverts are not subject to the setback.

MOA Long-Range Planning 2009 Aerial Photo

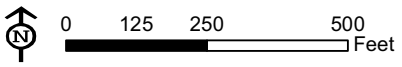
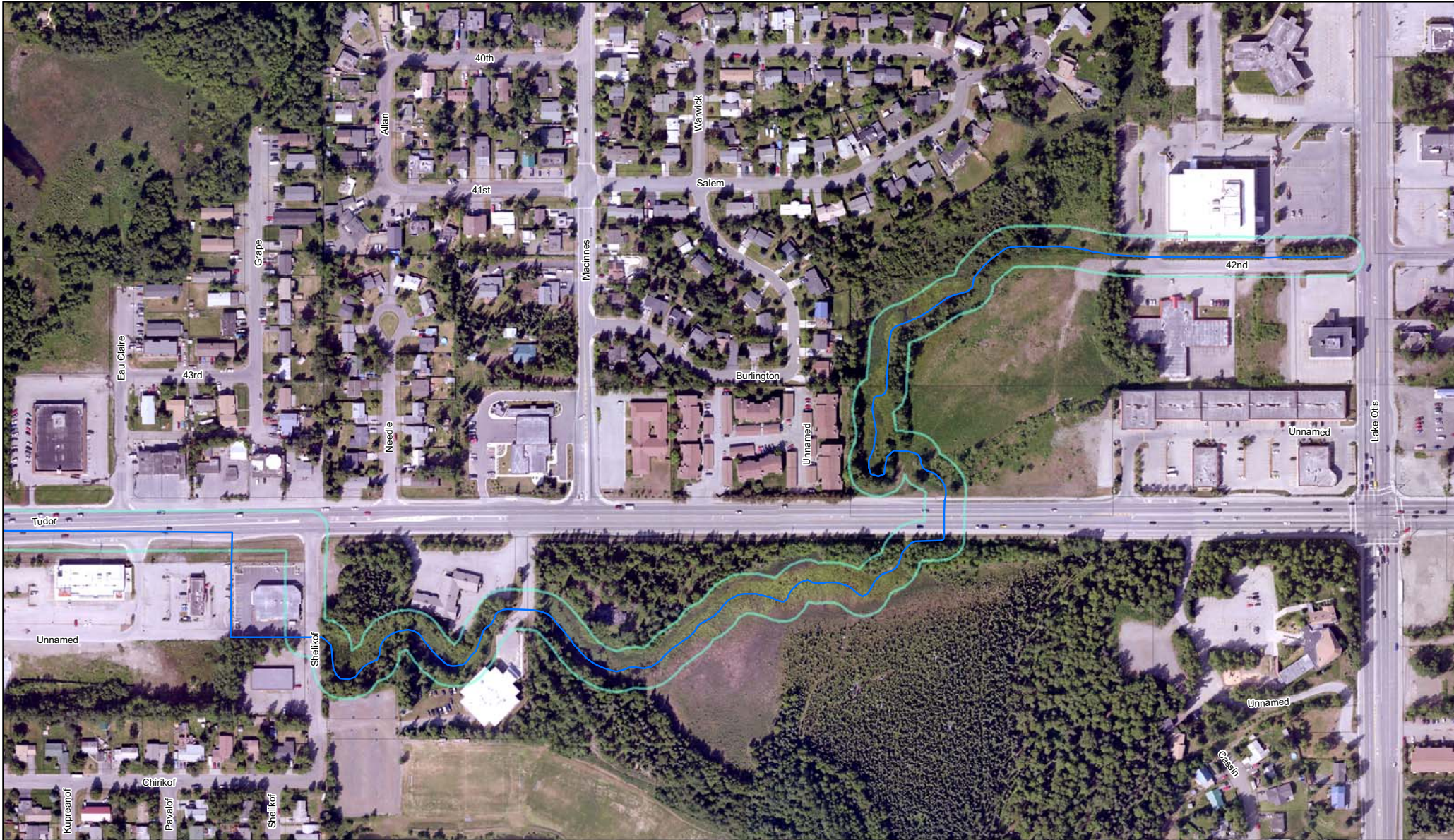
Fish Creek

50-foot setback



Note: sections of streams within culverts are not subject to the setback.

MOA Long-Range Planning 2009 Aerial Photo

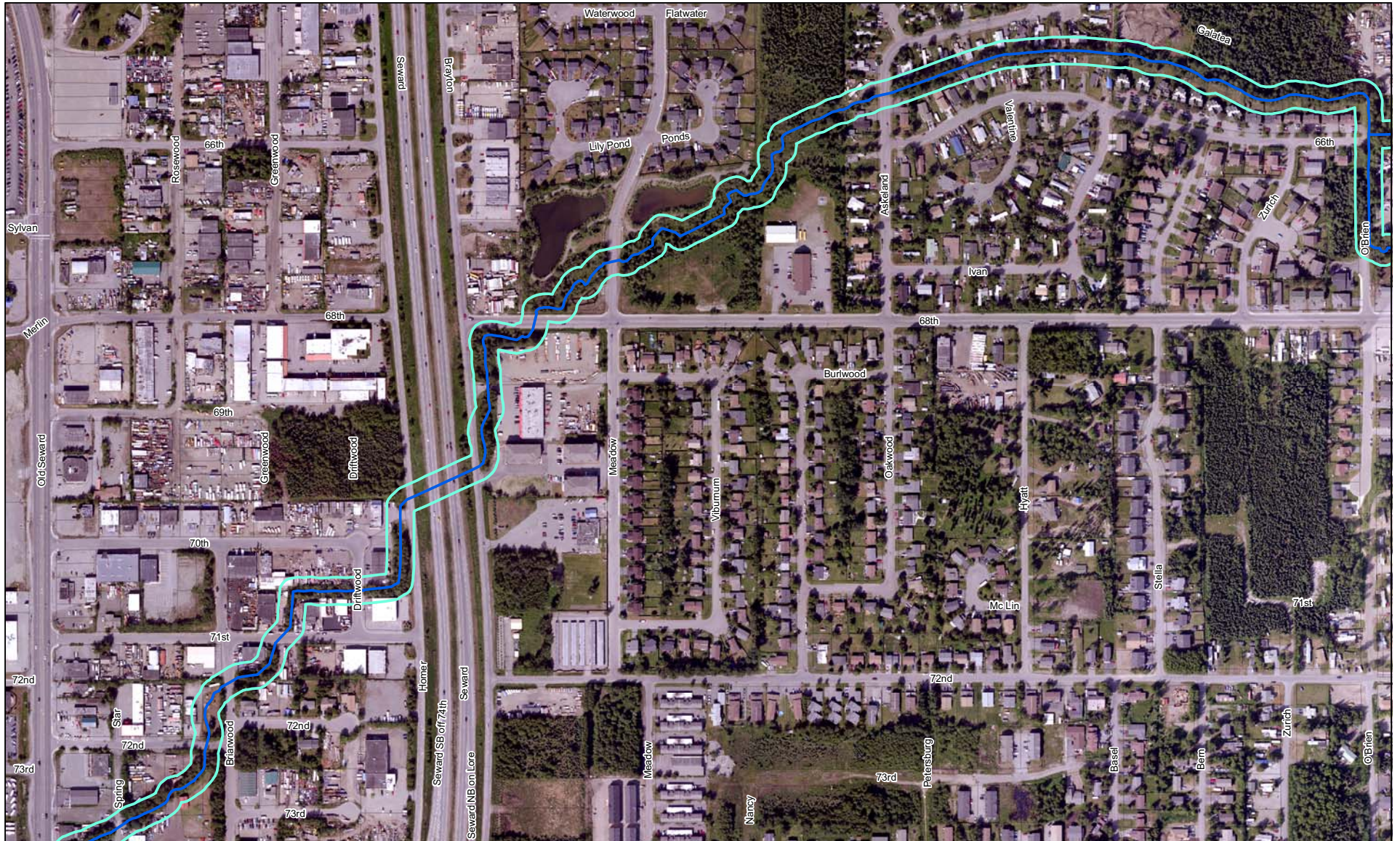


Note: sections of streams within culverts are not subject to the setback.

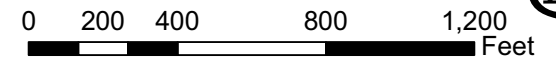
MOA Long-Range Planning 2009 Aerial Photo

Little Campbell Creek, North Fork

50-foot setback

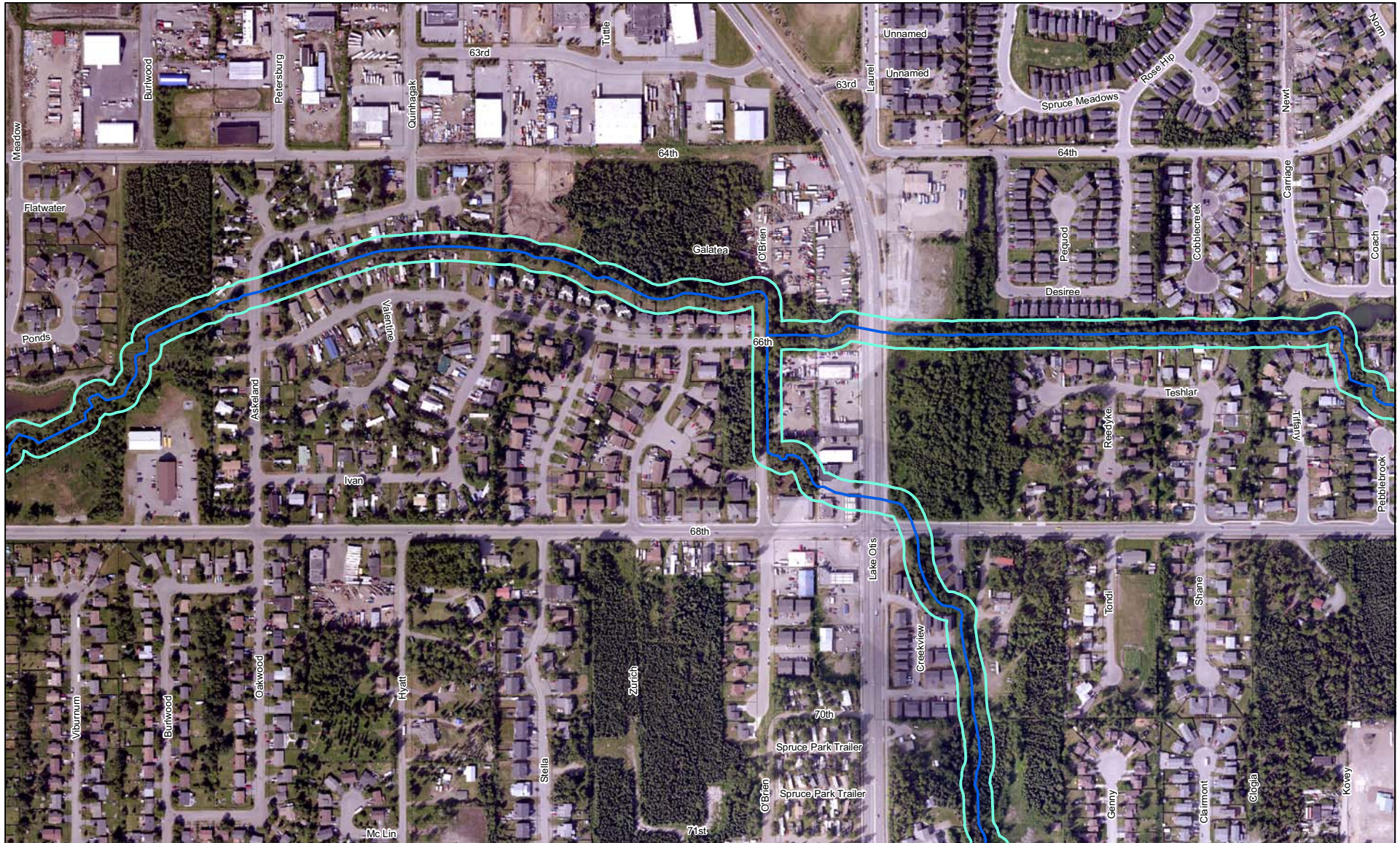


Note: where streams obviously cross roads, parking lots and driveways, it is within a culvert; therefore, the setback does not apply to those sections of the stream.

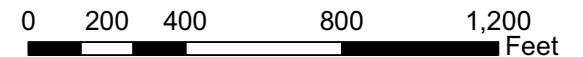


Little Campbell Creek, North Fork

50-foot setback

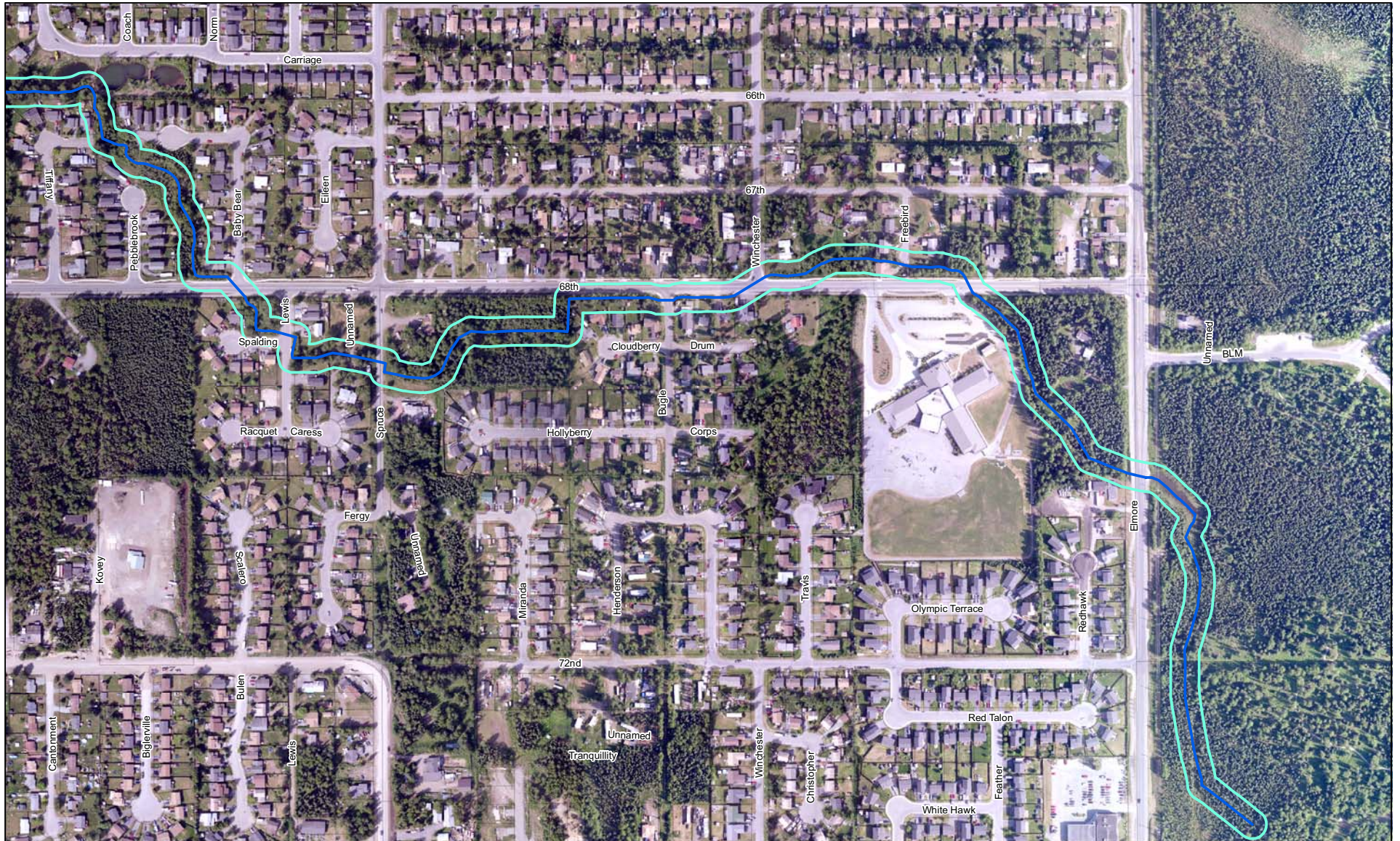


Note: where streams obviously cross roads, parking lots and driveways, it is within a culvert; therefore, the setback does not apply to those sections of the stream.

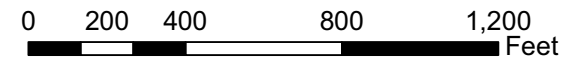


Little Campbell Creek, North Fork

50-foot setback

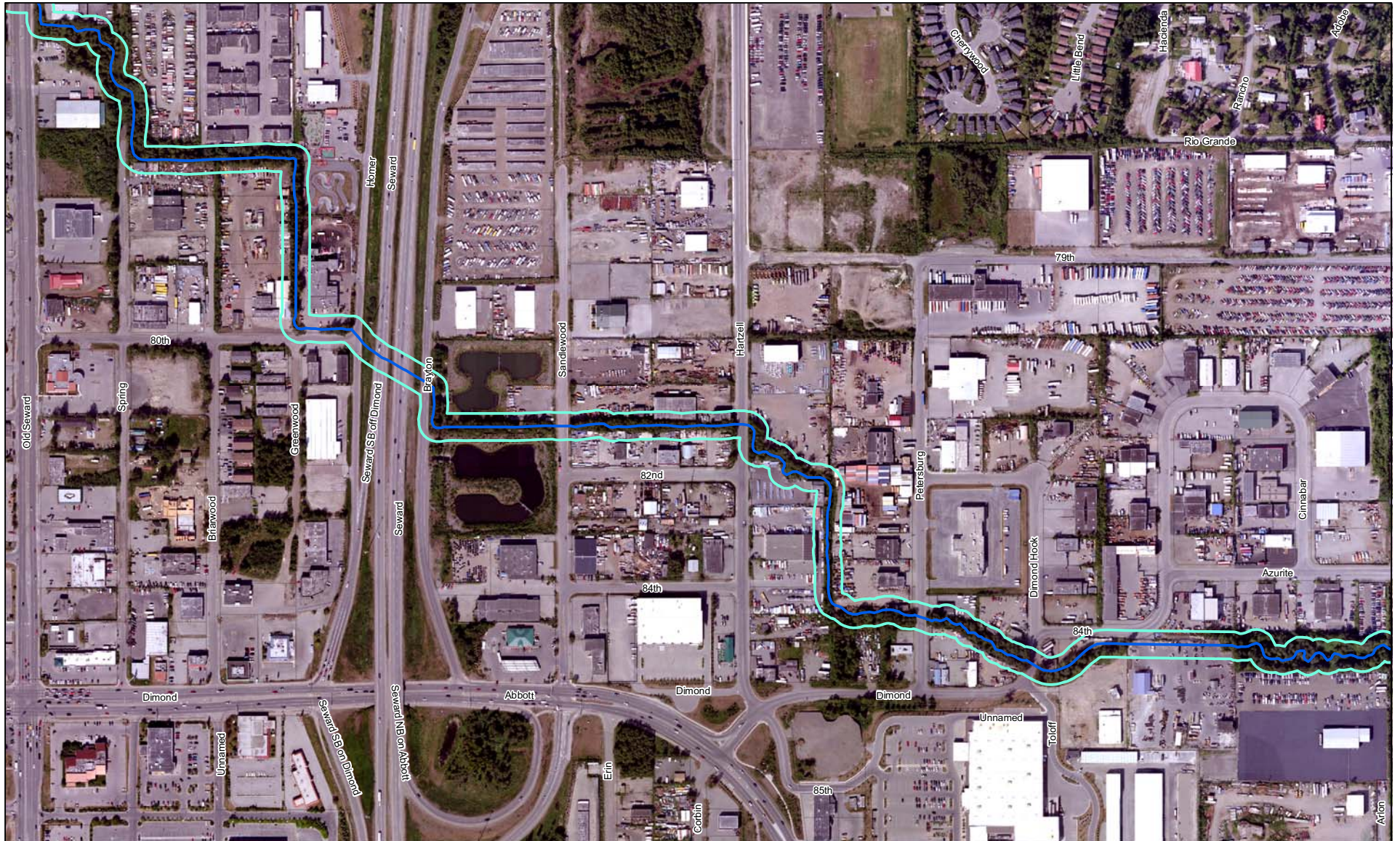


Note: where streams obviously cross roads, parking lots and driveways, it is within a culvert; therefore, the setback does not apply to those sections of the stream.

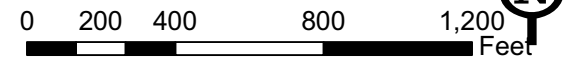


Little Campbell Creek, South Fork

50-foot setback

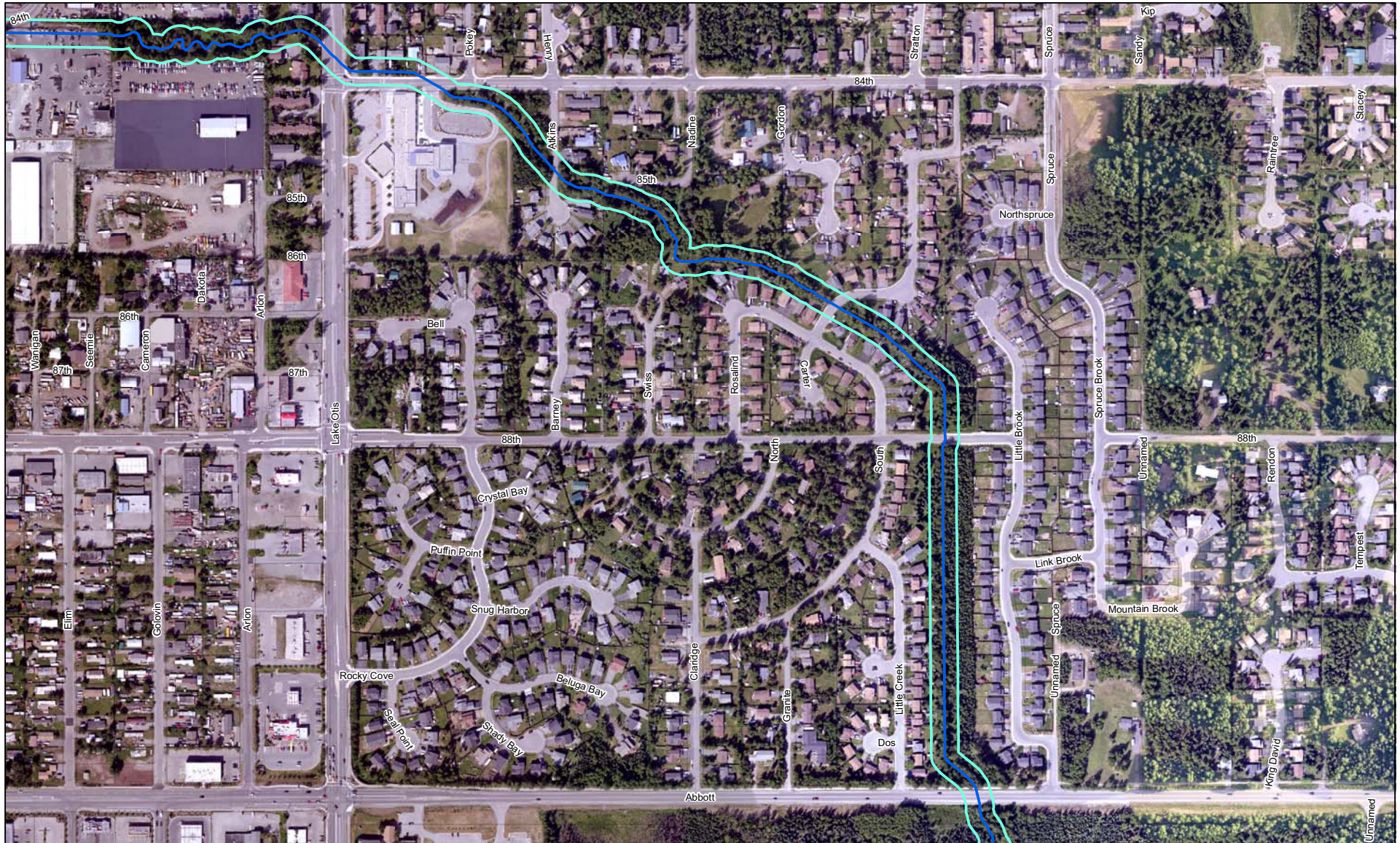


Note: where streams obviously cross roads, parking lots and driveways, it is within a culvert; therefore, the setback does not apply to those sections of the stream.

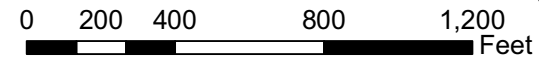


Little Campbell Creek, South Fork

50-foot setback



Note: where streams obviously cross roads, parking lots and driveways, it is within a culvert; therefore, the setback does not apply to those sections of the stream.

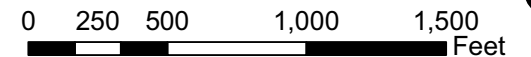


Little Campbell Creek, South Fork

50-foot setback

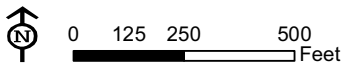
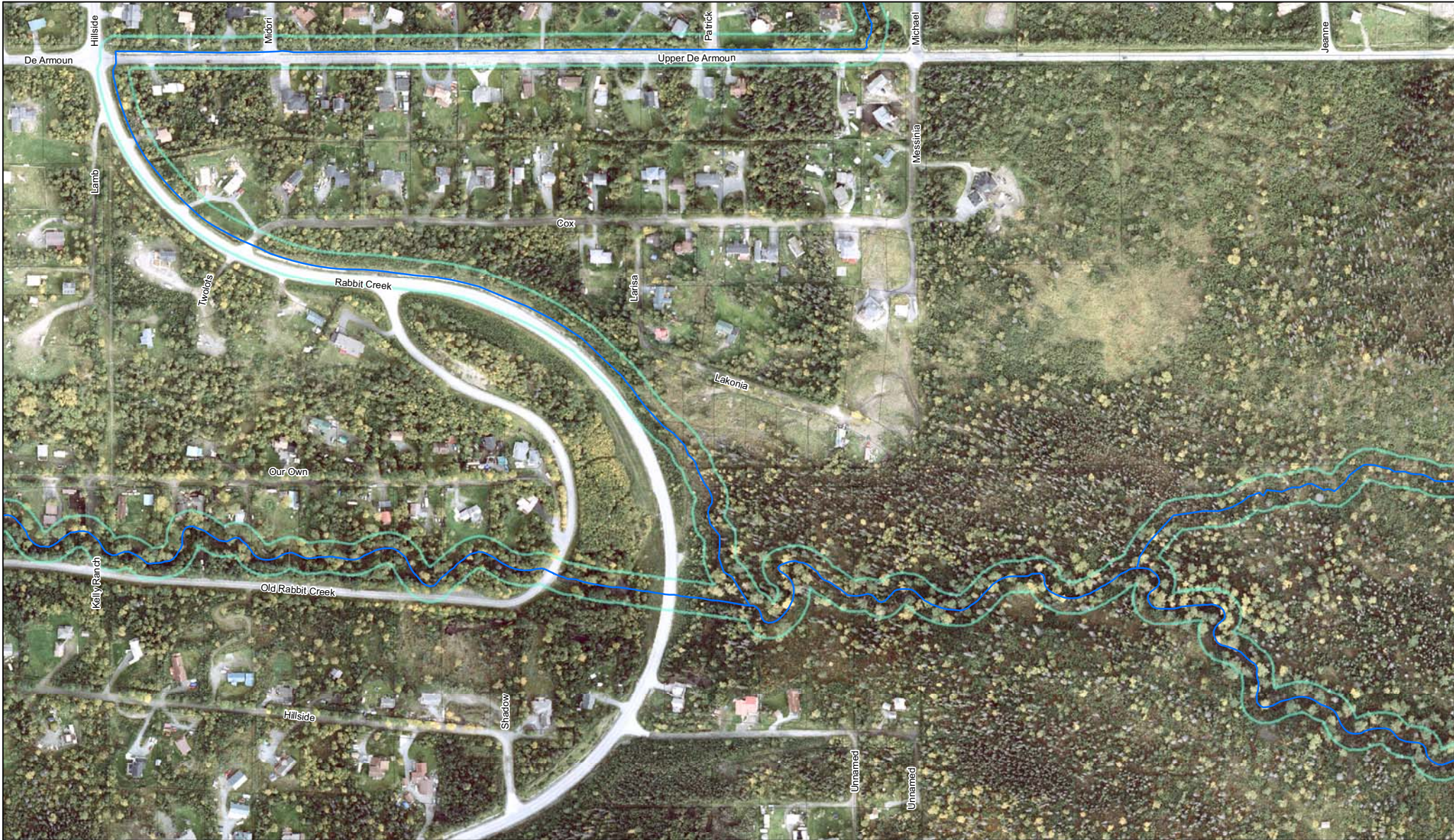


Note: where streams obviously cross roads, parking lots and driveways, it is within a culvert; therefore, the setback does not apply to those sections of the stream.



Rabbit Creek

50-foot setback

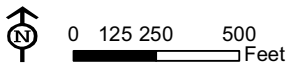


Note: sections of streams within culverts are not subject to the setback.

MOA Long-Range Planning 2009 Aerial Photo

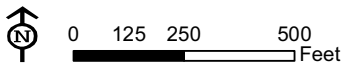
Rabbit Creek

50-foot setback



Note: sections of streams within culverts are not subject to the setback.

MOA Long-Range Planning 2009 Aerial Photo

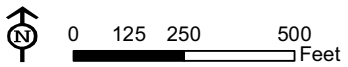


Note: sections of streams within culverts are not subject to the setback.

MOA Long-Range Planning 2009 Aerial Photo

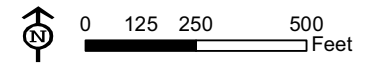
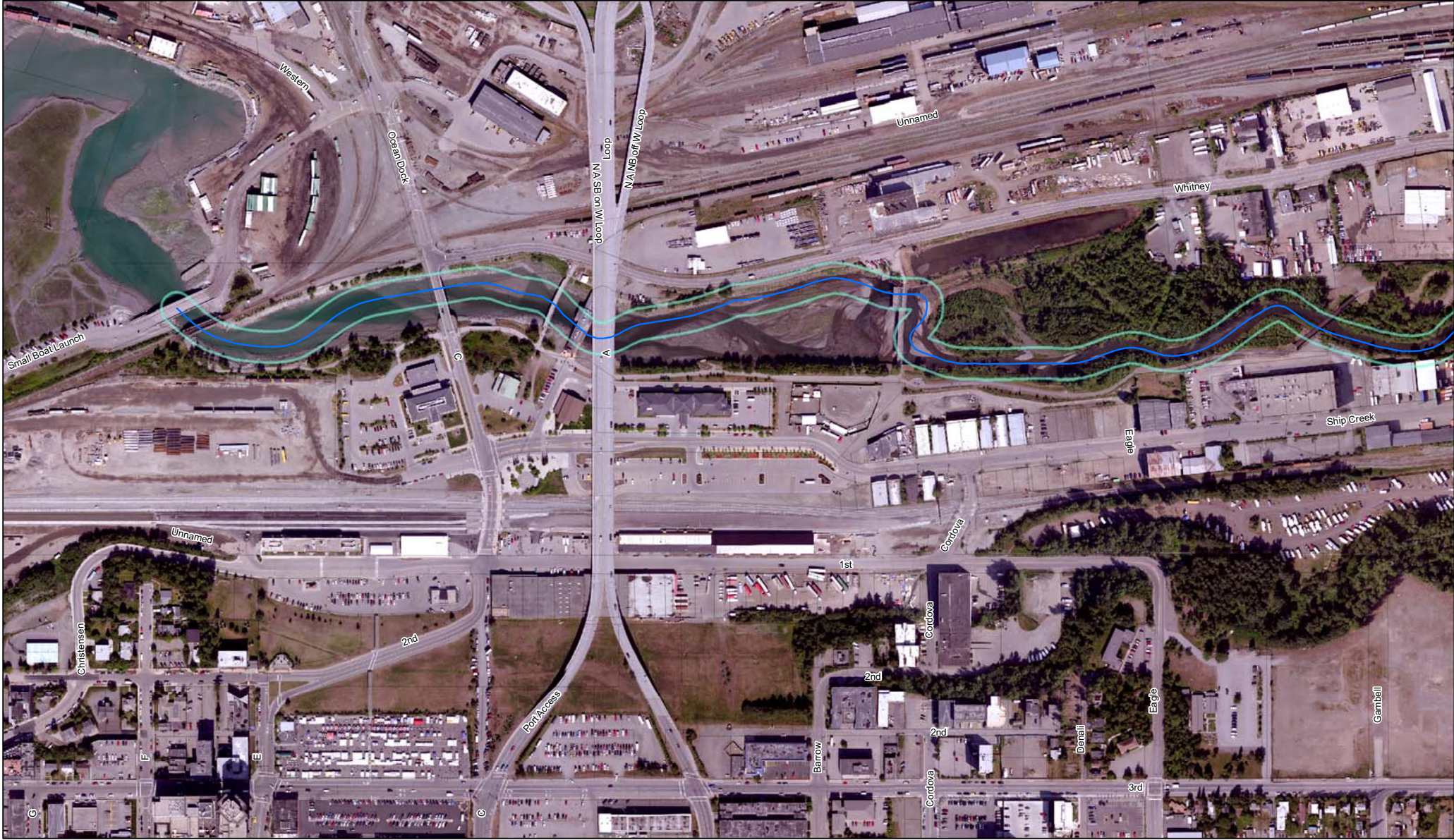
Rabbit Creek

50-foot setback



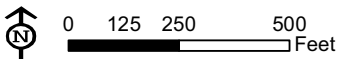
Note: sections of streams within culverts are not subject to the setback.

MOA Long-Range Planning 2009 Aerial Photo



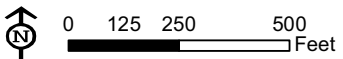
Note: sections of streams within culverts are not subject to the setback.

MOA Long-Range Planning 2009 Aerial Photo



Note: sections of streams within culverts are not subject to the setback.

MOA Long-Range Planning 2009 Aerial Photo



Note: sections of streams within culverts are not subject to the setback.

MOA Long-Range Planning 2009 Aerial Photo