



Anchorage 2040 Land Use Plan Map

A supplement to the Anchorage 2020 Comprehensive Plan

Anchorage 2040 Land Use Plan

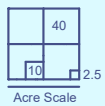
Planning and Zoning Commission
Recommended Draft, June 5, 2017



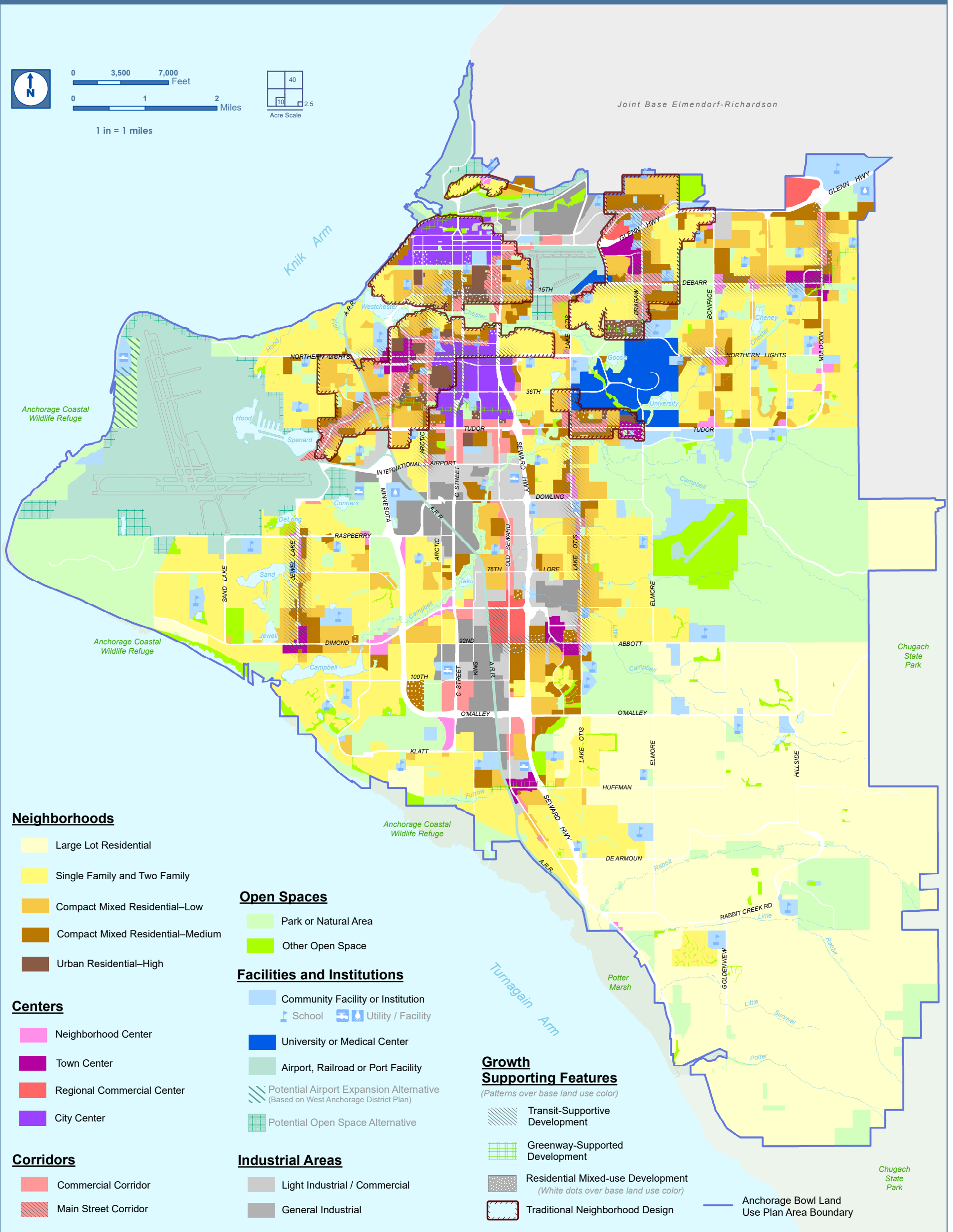
0 3,500 7,000 Feet

0 1 2 Miles

1 in = 1 miles



Joint Base Elmendorf-Richardson



Neighborhoods

- Large Lot Residential
- Single Family and Two Family
- Compact Mixed Residential—Low
- Compact Mixed Residential—Medium
- Urban Residential—High

Centers

- Neighborhood Center
- Town Center
- Regional Commercial Center
- City Center

Corridors

- Commercial Corridor
- Main Street Corridor

Open Spaces

- Park or Natural Area
- Other Open Space

Facilities and Institutions

- Community Facility or Institution
 - School
 - Utility / Facility
- University or Medical Center
- Airport, Railroad or Port Facility
- Potential Airport Expansion Alternative (Based on West Anchorage District Plan)
- Potential Open Space Alternative

Industrial Areas

- Light Industrial / Commercial
- General Industrial

Growth Supporting Features

(Patterns over base land use color)

- Transit-Supportive Development
- Greenway-Supported Development
- Residential Mixed-use Development (White dots over base land use color)
- Traditional Neighborhood Design

— Anchorage Bowl Land Use Plan Area Boundary

WHERE WE ARE

February 29, 2016
Community Discussion Draft

September 25, 2016
Public Hearing Draft

October 17, 2016 – June 5, 2016
PZC Public Hearing and Recommendation

Assembly Public Hearing and Action

Date: 8/18/2017 Name: LUPM_Main_5_2_17_11x17.mxd

You Are Here

