

Merrill Field Airport

Anchorage: Performance. Value. Results.

Mission

Safely operate and maintain Merrill Field Airport to meet the aviation and business needs of our customers.

Core Services

- Maintain runways, taxiways, and aircraft parking aprons in a safe condition.
- Provide space to operate and park aircraft.
- Provide lease space for private enterprises to support air transportation.

Accomplishment Goals

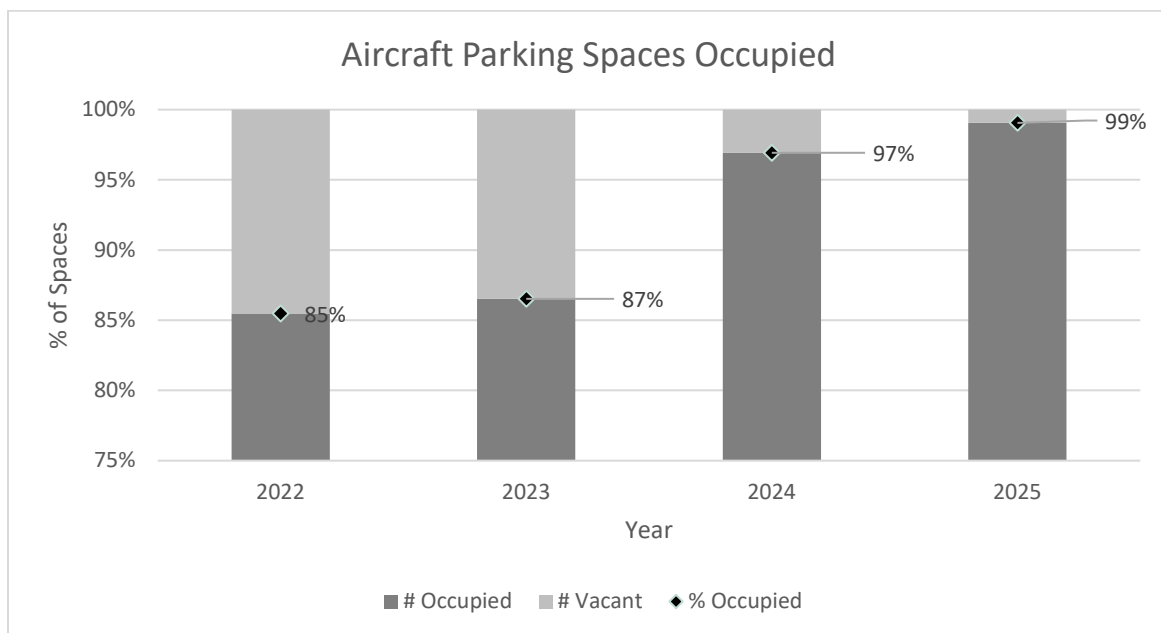
- Provide sufficient aircraft parking area and business lease space to meet public demand.
- Repair and improve surface conditions on all Runway operating surfaces with a Pavement Condition Index (PCI) below 70 and all Taxiway, Apron & Roadway operating surfaces with a PCI below 60 (on a scale of 1 – 100 with 100 being the best condition).

Performance Measures

Progress in achieving goals will be measured by:

Measure #1: Percent of Aircraft Parking Spaces Occupied

Spaces Available	2024 Actual	4Q Actual
423	410	421

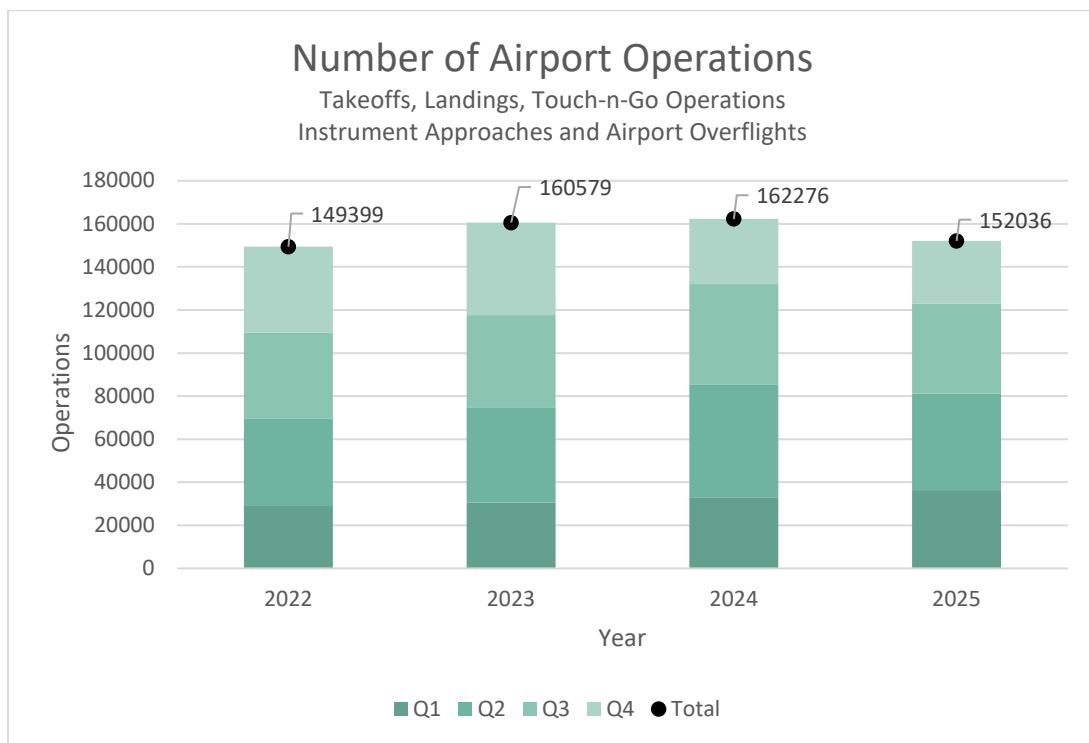


Measure #2: Percentage of Available Space, on Merrill Field Land, Currently Leased

Year	# Occupied	% Occupied	# Available	Waitlist
2021	54	108%	50	2
2022	54	100%	54	1
2023	55	102%	54	1
2024	55	100%	55	0
2025	55	100%	55	0

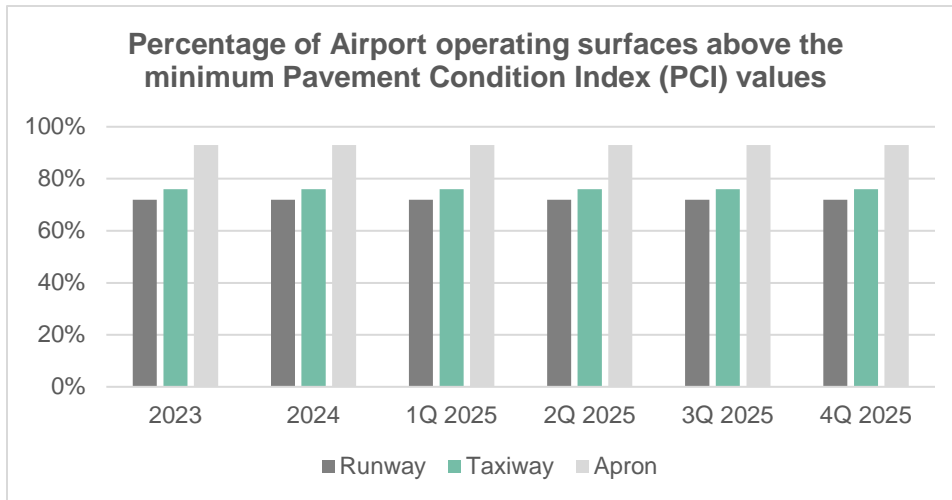
Measure #3: Number of Airport Operations (Takeoffs, landings, touch-n-go operations, instrument approaches and airport overflights)

2023 Actual	2024 Actual	4Q Actual
160,579	162,276	29,091



Measure #4: Percentage of operating surfaces above the minimum Pavement Condition Index (PCI) value

4Q Actual	4Q Actual	4Q Actual
Runway	Taxiway	Apron
72%	76%	93%



Measures the safety of the airport's pavement maintenance program by reporting the percentage of airport operating surfaces that are above established minimum Pavement Condition Index (PCI) values. (PCI of 70 or higher on Runways, and PCI of 60 or higher on Taxiways, Aprons, and Roadways on a scale of 1 – 100, with 100 being the best condition.)

Measure WC: Managing Workers' Compensation Claims

Reducing job-related injuries is a priority for the Administration by ensuring safe work conditions and safe practices. By instilling safe work practices, we ensure not only the safety of our employees but reduce the potential for injuries and property damage to the public. The Municipality is self-insured and every injury poses a financial burden on the public and the injured worker's family. It just makes good sense to WORK SAFE.

Results are tracked by monitoring monthly reports issued by the Risk Management Division.

