
Solid Waste Services Department Refuse Collections & Disposal Utility

Anchorage: Performance. Value. Results.

Mission

Providing safe, efficient, and innovative solid waste management for the Municipality of Anchorage.

Vision

Advancing solid waste management through continuous improvement and transparent performance.

Values

Providing value to our community through safe, innovative, and sustainable solid waste management.

Core Services

- Provide dumpster service to commercial and multifamily residential customers.
- Provide automated garbage, curbside recycle collection, and disposal to residential customers.
- Provide transfer station and landfill disposal services for the entire community of Anchorage.
- Support and promote energy efficient and sustainable practices for all residents throughout the community.

Accomplishment Goals

- Subsidize Disposal Utility operations with revenue collected from landfill gas sales to keep rates lower for longer periods of time.
- Extend the life of the Anchorage Regional Landfill by increasing the ratio of inbound garbage to dirt placed as daily cover. The less dirt used to cover garbage for means more space available at the landfill.
- Extend the useful life of the Anchorage Regional Landfill as far in the future as possible by improving recycling and operational performance on a continuous basis. The longer the landfill stays open the cheaper the cost to dispose of material in Anchorage is.

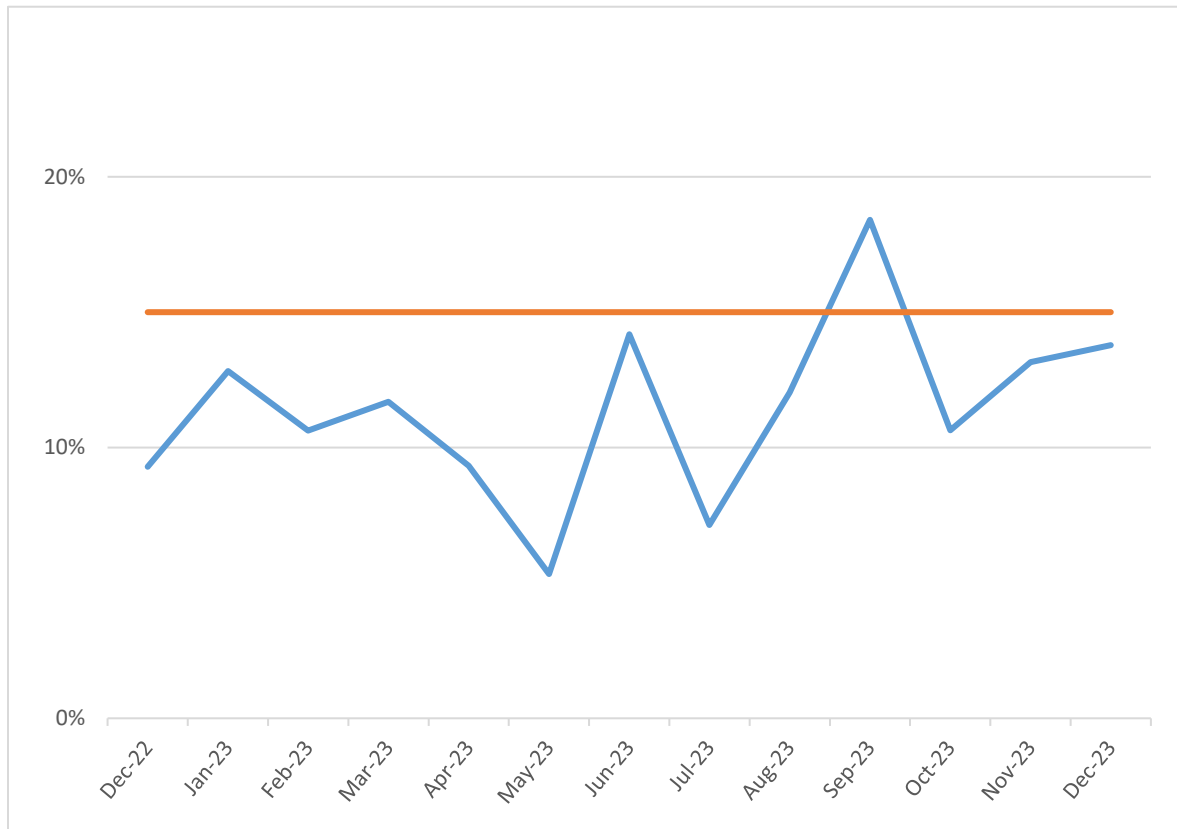
Performance Measures

Progress in achieving these goals will be measured by:

- Disposal Costs Offset by Landfill Gas Revenue
- Garbage to Dirt Ratio
- Landfill Closure Date

The following pages provide actual data which quantify these measures.

Measure #1: Disposal Costs Offset by Landfill Gas Revenue

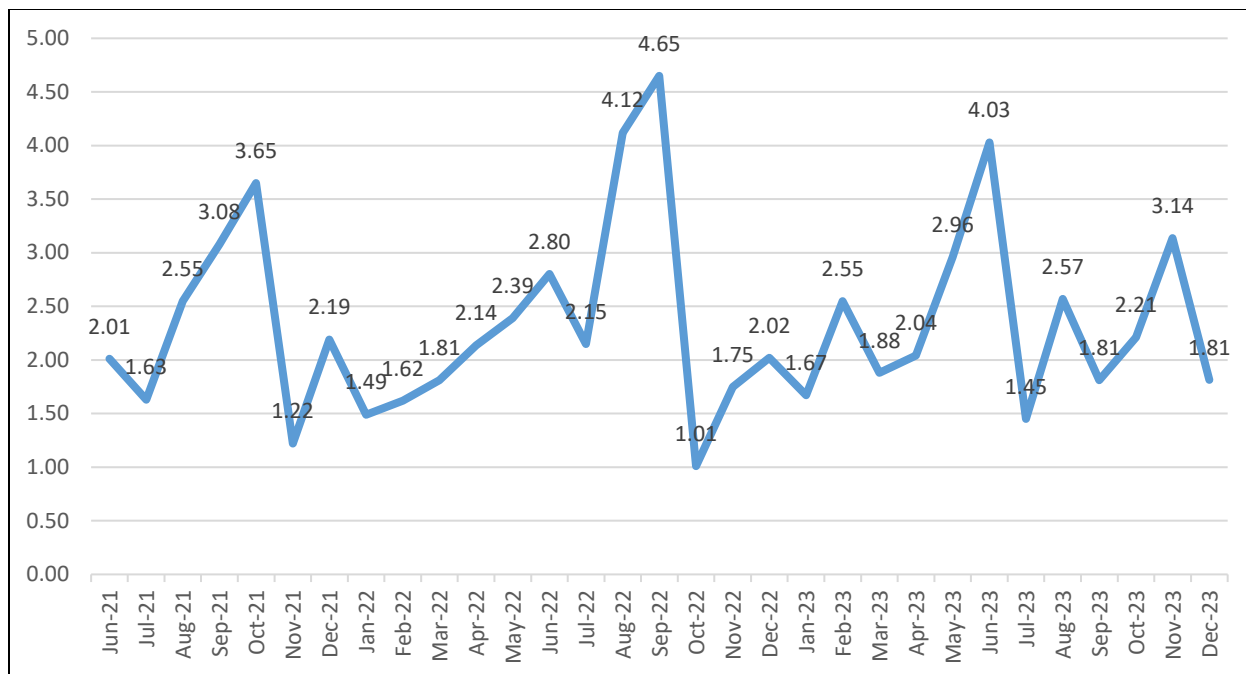


Quarter 4 – Disposal Costs Offset: 13% (note-2023 periods have not been closed, these numbers may not represent full disposal costs)

Calculated by dividing landfill gas revenue by total disposal costs.
SWS has set a target goal of >15%. The data for this measure is provided on a quarterly basis.

Description: SWS syphons methane gas from collected waste in the landfill. A portion of the gas is sold to provide electricity to the Army side of Joint Base Elmendorf-Richardson. The revenue from selling landfill gas is used to subsidize disposal costs, therefore lowering customer rates.

Measure #2: Garbage to Dirt Ratio



Quarter 3 Average – 2.39

Oct: 2.21

Nov: 3.14

Dec: 1.81

Calculated by dividing total tons of waste received at the landfill by the total tons of dirt (cover) used, which includes alternative cover.
SWS has set a target goal of a >1.4 ratio.

Description: SWS covers received waste every day. We use different forms of cover like dirt, gravel, wood chips, tarps, and even snow. This data is important because SWS has a goal to “extend the life of Anchorage Regional Landfill.” The less amount of cover used to cover the waste, the more space is left in the landfill and the longer it will remain open.

Measure #3: Landfill Closure Date

Quarter 3 Estimated Year of Closure: 2078

SWS calculates a 12-month average of waste generation and cover material used by the landfill to predict the day the landfill will reach full capacity. As public behavior changes, the life of the landfill will be affected by the community lowering the amount of waste generation, thus allowing SWS to use less cover material. Decomposition and compaction are considered in the equation as well. SWS collects this data from the most current aerial survey landfill study. SWS does not have a target set because this information is continually changing, however, SWS has a goal to “extend the life of Anchorage Regional Landfill.”

Description: SWS continuously thinks about ways to provide the Municipality of Anchorage safe, efficient, and innovative solid waste management for the foreseeable future (i.e. building a new Central Transfer Station – <https://newscentraltransferstation.com/>). Through fine-tuning

public behavior through recycling efforts, SWS can successfully serve the MOA for many years beyond this estimated date.

Landfills are not forever, there is no time to waste.

PVR Measure WC: Managing Workers' Compensation Claims

Reducing job-related injuries is a priority for the Administration by ensuring safe work conditions and safe practices. By instilling safe work practices, we ensure not only the safety of our employees but reduce the potential for injuries and property damage to the public. The Municipality is self-insured and every injury poses a financial burden on the public and the injured worker's family. It just makes good sense to WORK SAFE.

Results are tracked by monitoring monthly reports issued by the Risk Management Division.

