
Merrill Field Airport

Anchorage: Performance. Value. Results.

Mission

Safely operate and maintain Merrill Field Airport to meet the aviation and business needs of our customers.

Core Services

- Maintain runways, taxiways, and aircraft parking aprons in a safe and secure condition.
- Provide space to operate and park aircraft.
- Provide lease space for private enterprises to support air transportation.

Accomplishment Goals

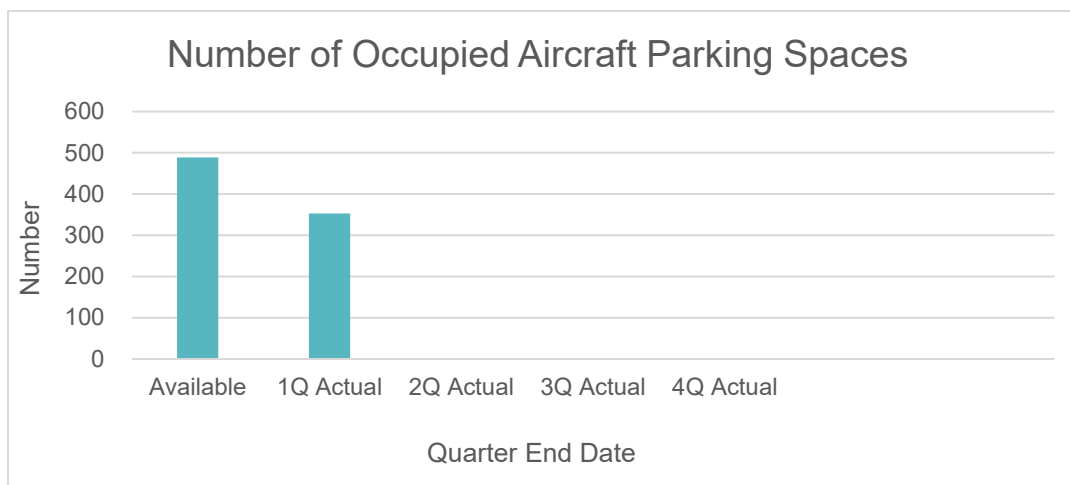
- Reduce the number of vehicle-pedestrian deviations (VPDs) - unauthorized entry into restricted areas.
- Provide sufficient aircraft parking area and business lease space to meet public demand.
- Repair and improve surface conditions on all Runway operating surfaces with a Pavement Condition Index (PCI) below 70 and all Taxiway, Apron & Roadway operating surfaces with a PCI below 60 (on a scale of 1 – 100 with 100 being the best condition).

Performance Measures

Progress in achieving goals will be measured by:

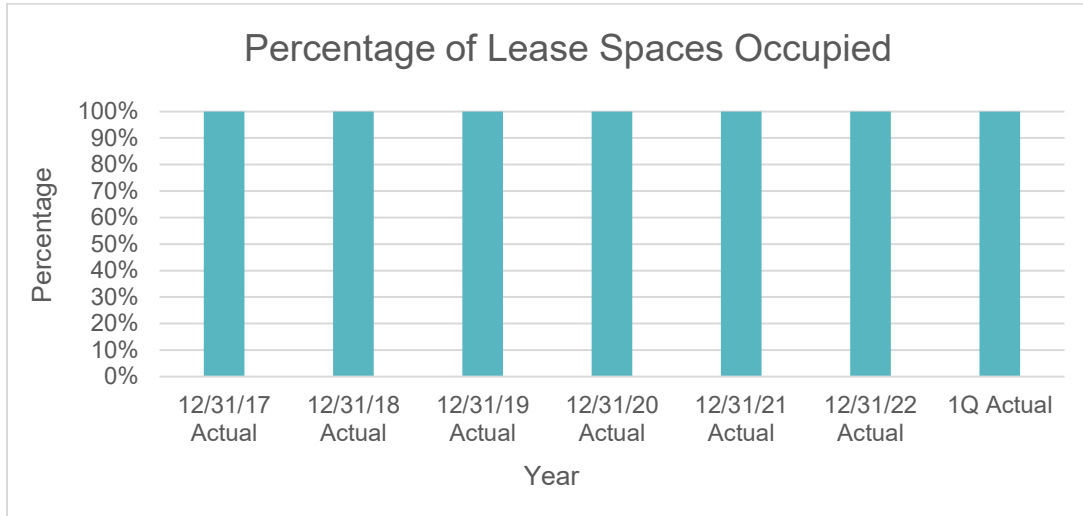
Measure #1: Number of Occupied Aircraft Parking Spaces owned by Merrill Field
--

Spaces Available	2022 Actual	2023 1Q Actual
489	366	353

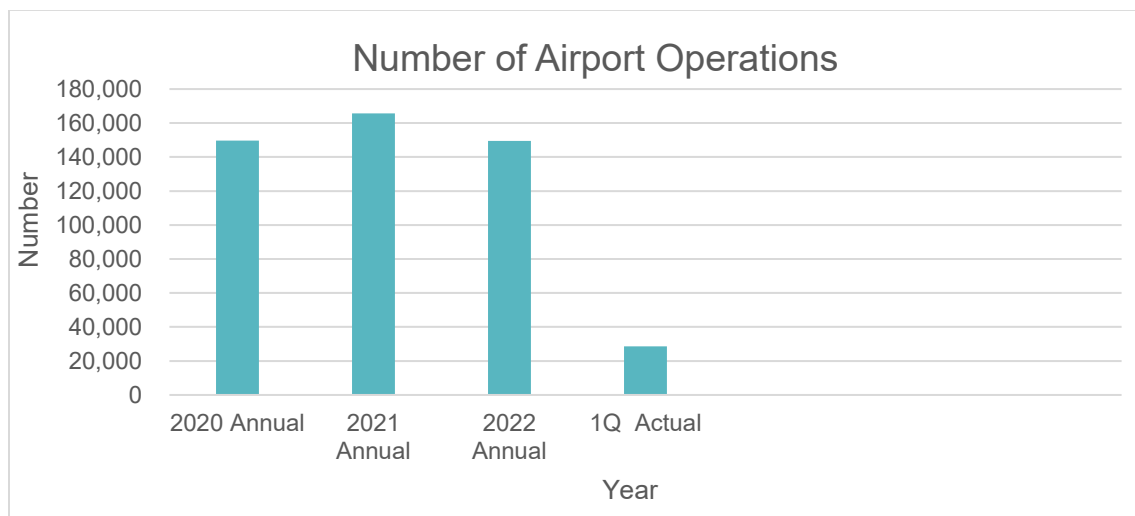


Measure #2: Percentage of Lease Spaces, on Merrill Field Land, Currently Leased

2021 Actual	2022 Actual	2023 1Q Actual
(54/54)	(55/55)	(55/55)
100%	100%	100%

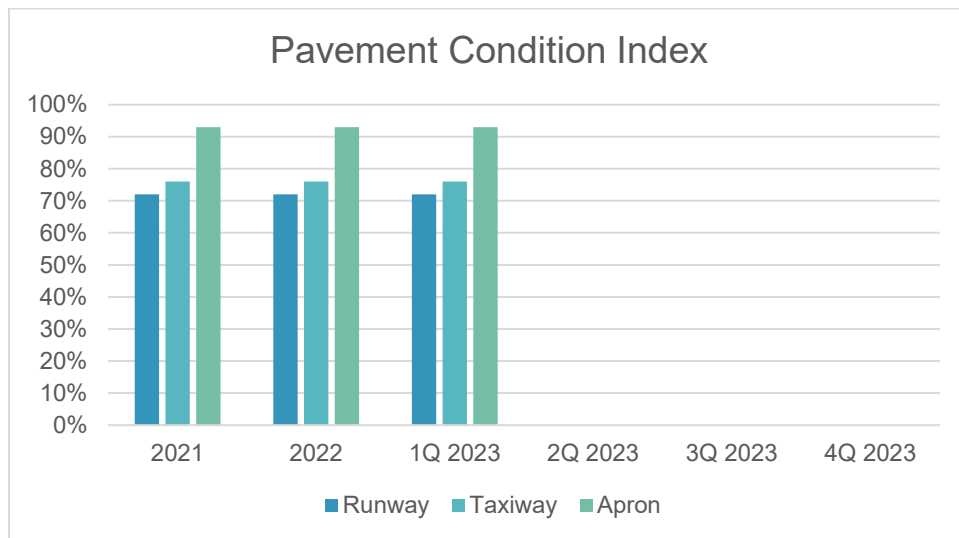
**Measure #3: Number of Airport Operations (Takeoffs, landings, touch-n-go operations, instrument approaches and airport overflights)**

2021 Actual	2022 Actual	2023 1Q Actual
165,671	149,399	28,657



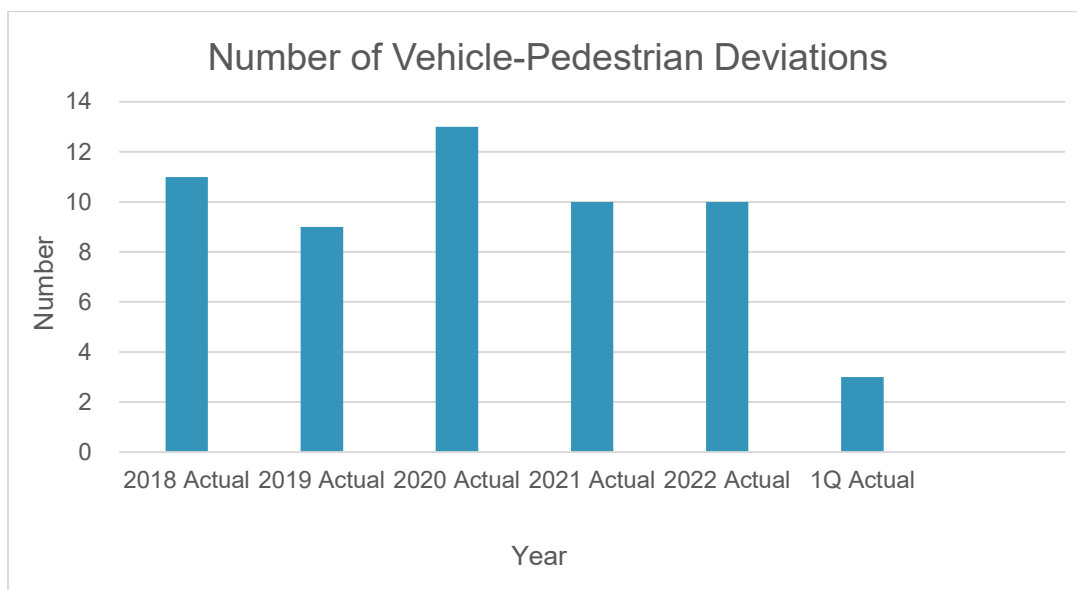
Measure #4: Percentage of operating surfaces above the minimum Pavement Condition Index (PCI) value

1Q Actual	1Q Actual	1Q Actual
Runway	Taxiway	Apron
72%	76%	93%



Measure #5: Number of Vehicle-Pedestrian Deviations (VPDs)

2021 Actual	2022 Actual	2023 1Q Actual
10	10	3



PVR Measure WC: Managing Workers' Compensation Claims

Reducing job-related injuries is a priority for the Administration by ensuring safe work conditions and safe practices. By instilling safe work practices, we ensure not only the safety of our employees but reduce the potential for injuries and property damage to the public. The Municipality is self-insured and every injury poses a financial burden on the public and the injured worker's family. It just makes good sense to WORK SAFE.

Results are tracked by monitoring monthly reports issued by the Risk Management Division.

