

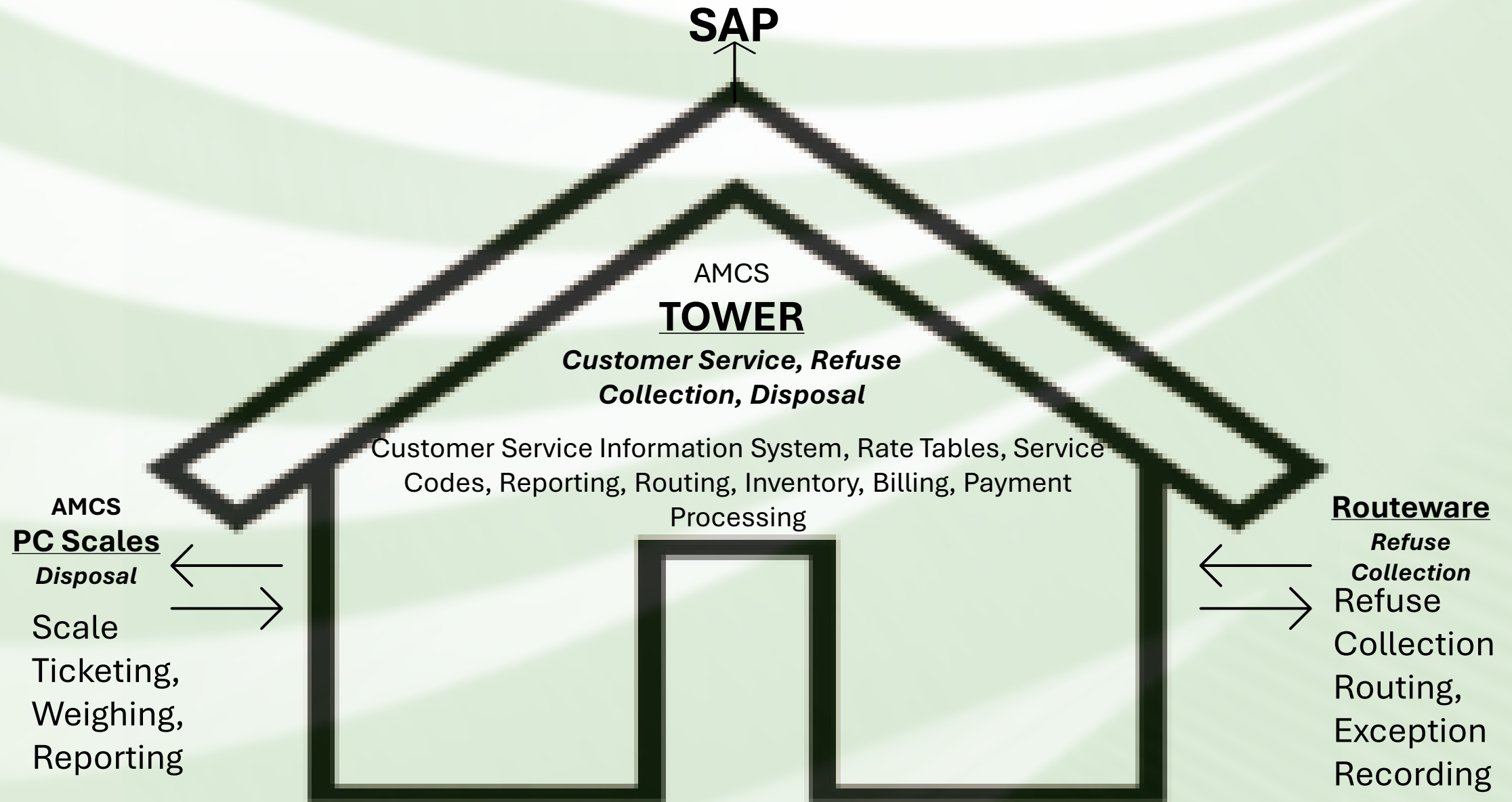


Solid Waste Services Software Upgrade

IEUOC Update August 19, 2025



Current Software Configuration



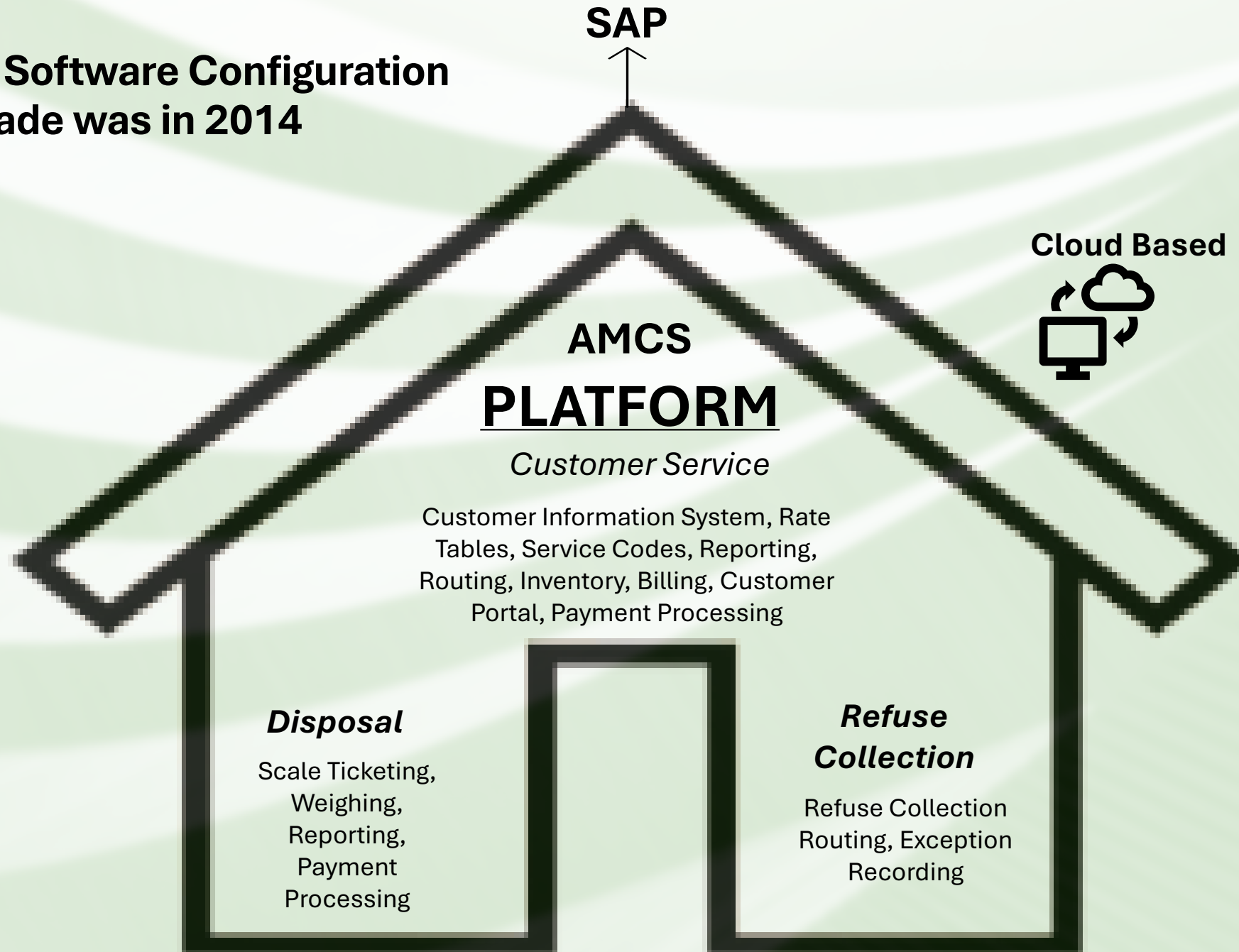
Today

Current Issues Include:

- Outages/interruptions
- Slow connectivity
- Lack of continuity
- Heavy call traffic to Customer Service
- Booth delays
- Revenue loss



Proposed Software Configuration
Last Upgrade was in 2014



Vision AI

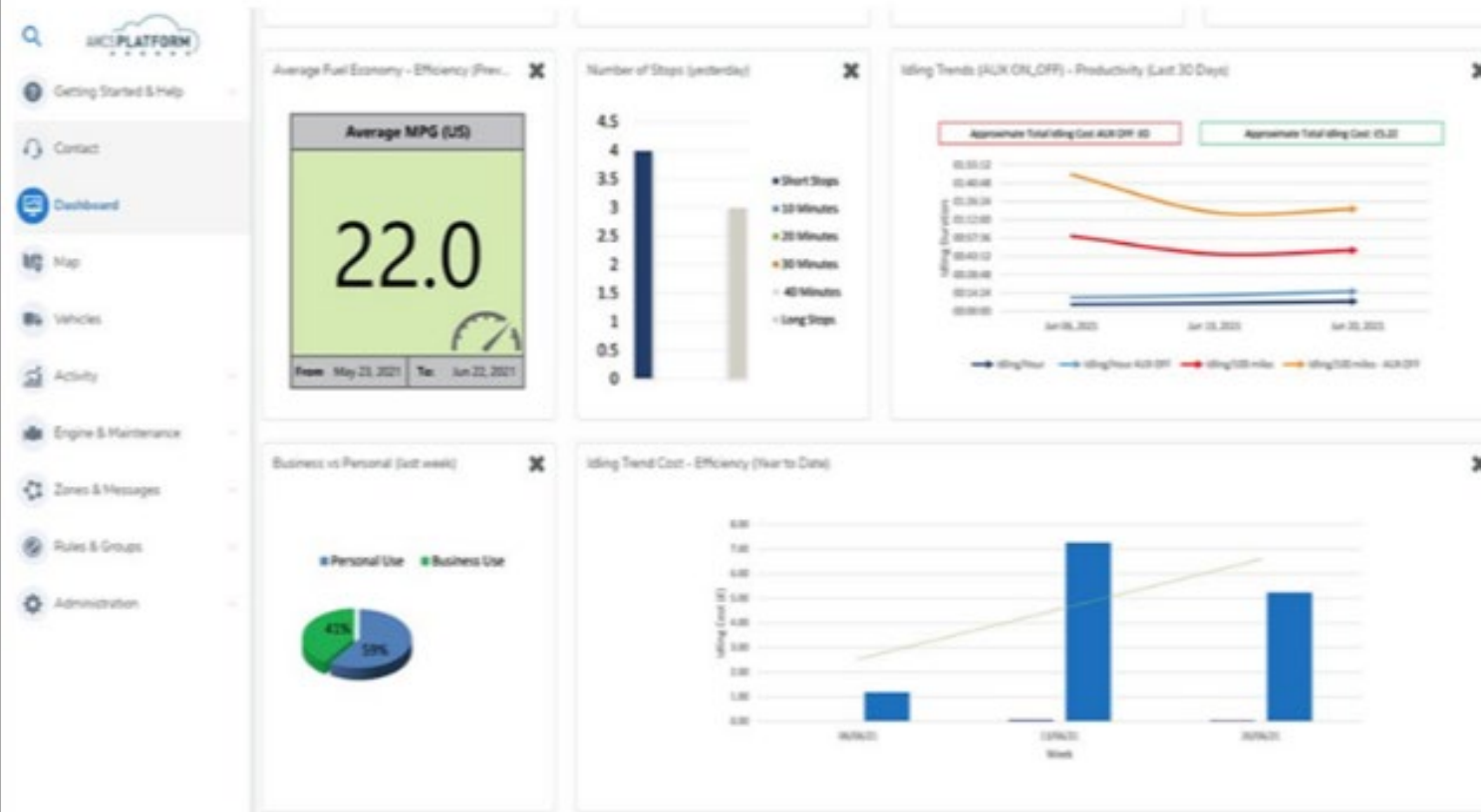


- **Automated Material Identification:** to minimize contamination
- **Material Composition Analysis:** to better characterize waste streams
- **Service Exceptions:** tracking overloaded containers, blocked access etc.
- **Increased safety:** identify hazards in the material stream such as lithium batteries etc.

Telematics

fuel usage/energy consumption

AMCS Telematics provides detailed KPI and reports on both fuel usage and EV energy usage and battery status.



Tomorrow (Go Live October 6, 2025)

**Self-Service for
customer's through
a new online
customer service
portal**

**Real-time service
documentation**

**Faster processing-
comms from truck to
CS and ticketing at
booths**

**Increased safety
assurances/less
liability**

**Continuity of
processes**

**Efficient- telematics
to optimize routing
and driver
productivity**

**Better data
tracking/reporting**

**Faster service/less
queuing- no transfer
trucks in line**

**AI software will
inform of trends in
contamination**

Project Evolution

1. Assembly approved initial project May 14

- 14 refuse collection trucks, telematics, tablets, and basic camera system
- Customer service migration and portal/software upgrade
- Includes Hardware and software
- Vision AI for container contamination and overflow-waste characterization in recycling and Municipal Solid Waste Hazardous Waste, items such as refrigerators

2. SWS added as a change order with emerging technology \$30K:

- Rearview and dash cameras for 360 degree view for risk management
- Driver Assisted Terminal- 1 unit for implementation pilot (outbound transfer trucks) reducing traffic on the bridge and minimize queuing time at scale house

3. Upcoming AM for Approval: SWS is now expanding cameras and telematics

- 14 trucks to 26 refuse fleet of collection trucks
- 35 transfer trucks for disposal fleet One additional Driver Assisted Terminal
- Includes tablet replacement of outdated and failing current system
- Hardware and Software replacement

AMCS Platform Key Advantages

Customizable customer facing portal

Consolidation of 3 current software products (Tower, PC Scales, and Routeware) into one fully integrated operating system

Data migration from one AMCS product to another AMCS product

Enhanced reporting and analytic capabilities to align with current industry standards and accommodate landfill life projection studies

Fleetwide comprehensive vehicle camera systems and telematics for risk mitigation and productivity monitoring

Driver Assisted Terminal to automate SWS transfer truck weighing and improve traffic flow

New refuse collection vehicle onboard tablets

Cloud based- no more server connectivity issues