

Don Young Port of Alaska Modernization Program

IEUOC Update – December 18, 2025

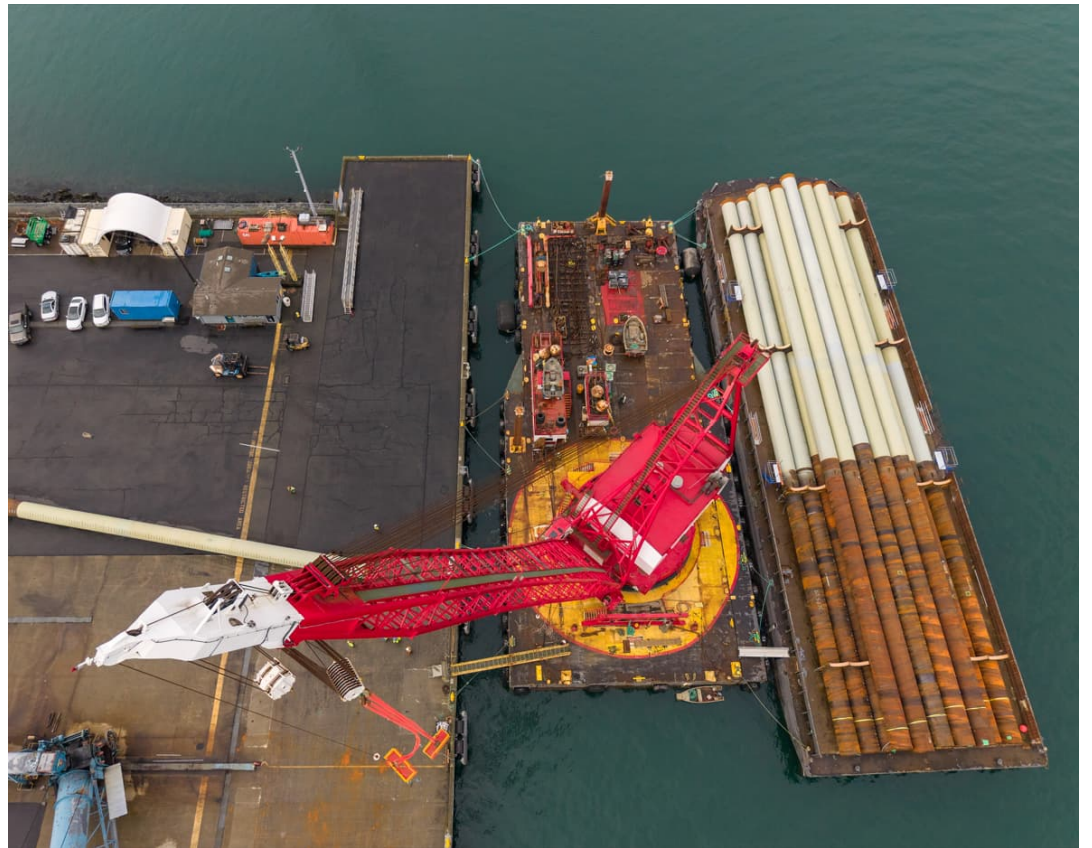


Terminal 1 Construction

- Anticipate MARAD FONSI end of December, all other permitting complete
- Piling fabrication ongoing
- Precast element fabrication began early December
- Working with the contractor and Matson to coordinate construction work and container operations
- Construction Notice to Proceed in March 2026



Piling load out



T1 Piling

72-inch diameter piling, each about 200 ft long being loaded on to barge.



Sub Cap Rebar

Pre-Tied Reinforcing Steel cage as delivered to CTC.



Sub Cap Forms

Cage in forms, note, dowel ends color coded for different lengths/bends to achieve desired layout at top.



Sub Cap Forms

Cage in forms, Top of sub cap w/o end of installed yet. Will be poured in this orientation like a wall.



A photograph of a shipyard at dusk. The sky is a mix of purple, pink, and blue. In the foreground, a large body of water reflects the sky and the lights of the shipyard. The shipyard itself is filled with various structures, including cranes and buildings. Some buildings have the name 'Matson' on them. The overall scene is industrial and serene.

Thank you